



Lebanon National Operations Room

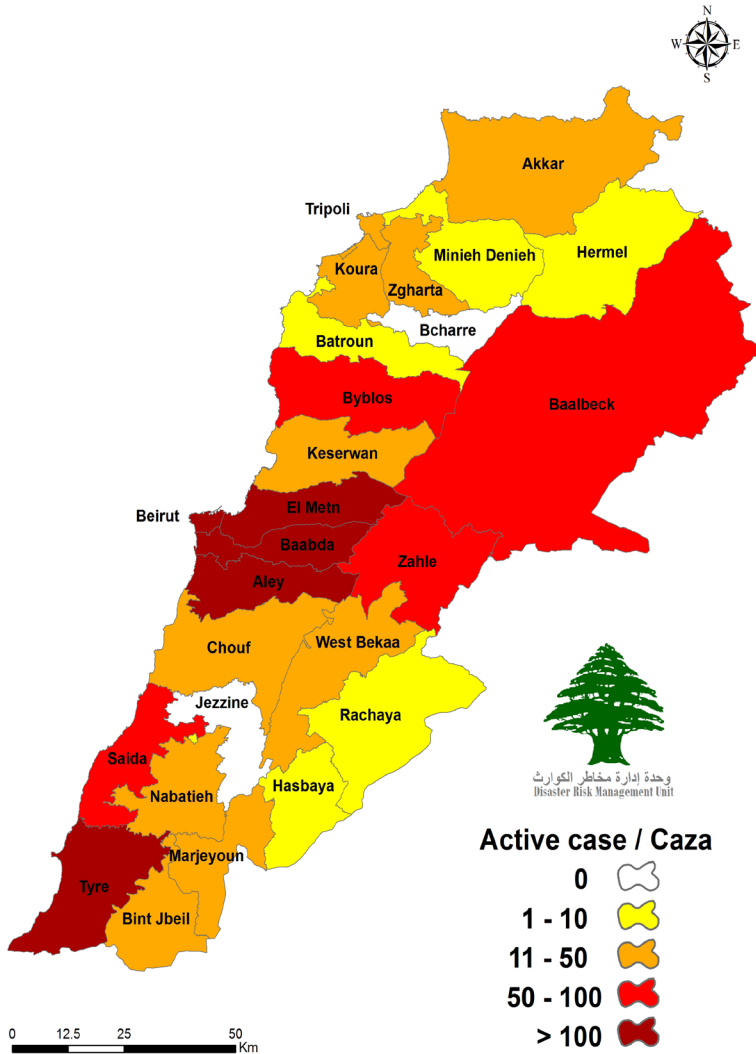
Daily Report on COVID-19

Friday, July 31, 2020

Report #135

Time published: 19:00

Number of Cases by Location



Total registered cases since Feb. 21

4555

locals

3563

Lebanese expats

992

Recoveries

1761

Deaths

59

Total registered cases in the past 24 hrs.

224

locals

218

Lebanese expats

6

Conducted PCR tests in labs since Feb. 21

299,997

PCR tests conducted for locals in the last 24 hrs. (in labs)

5309

Conducted PCR tests in airports in the past 24 hours

3352

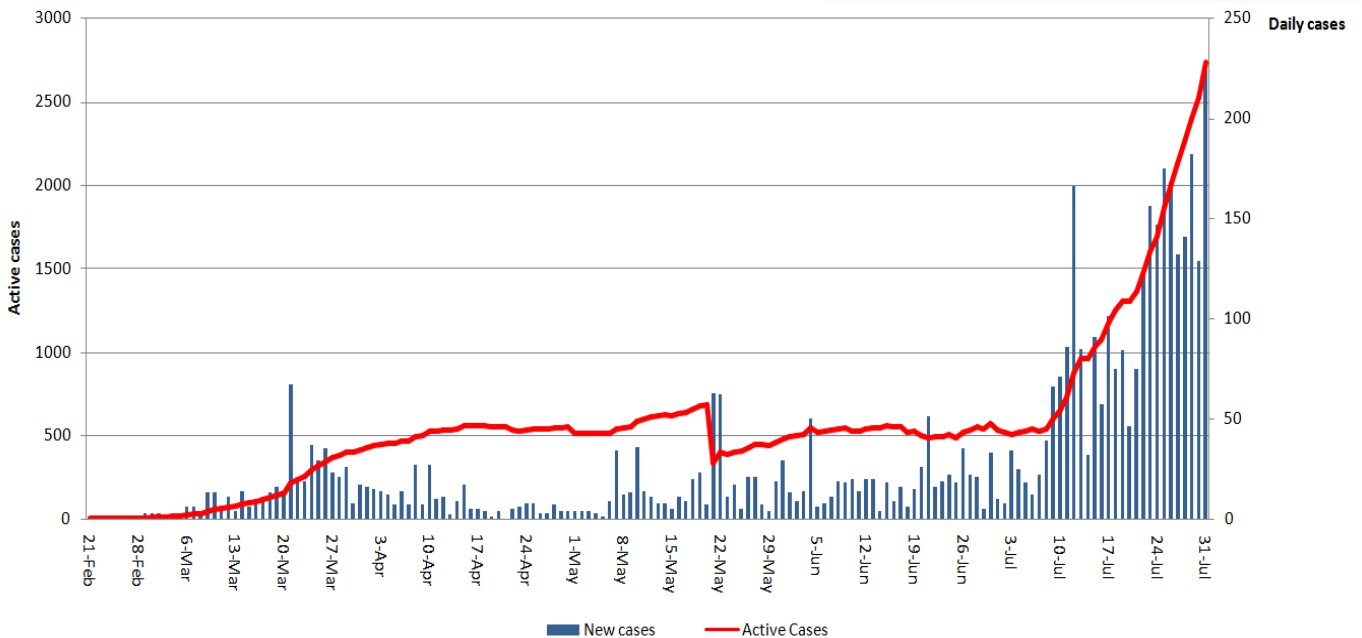
2735 active cases

2600 in home isolation

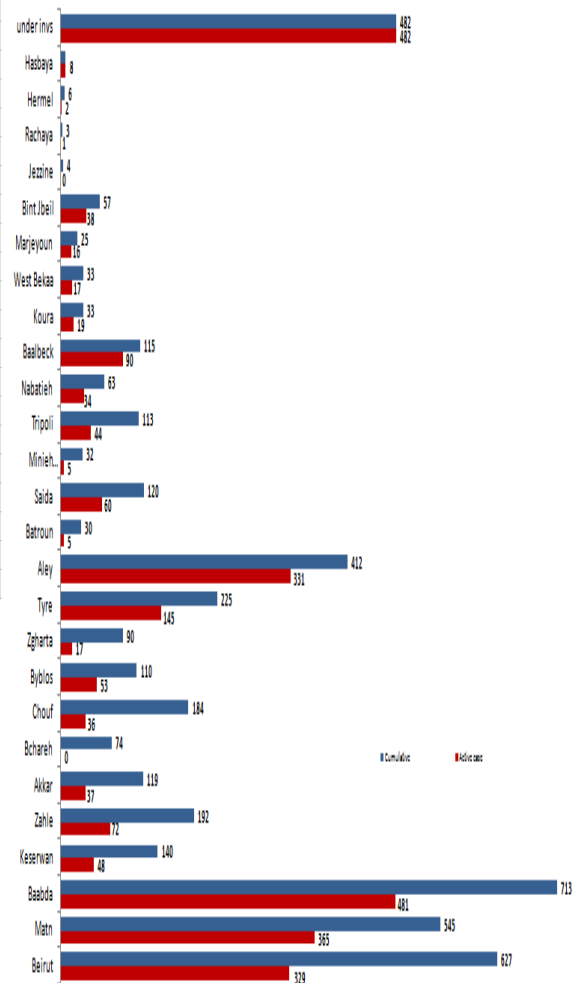
135 are currently hospitalized

104 mild cases

31 in ICU



Caza	Municipality	Number of cases	Local/Expat
Beirut	Ras Beirut	3	Local
	Hamra	3	Local
	Msayetbe	1	Local
	Mar Elias	1	Local
	Borj Abi Haidar	1	Local
	Tarik Jadidah	3	Local
	Ras Nabaea	2	Expat
	Under Investigation	1	Local
Baabda	Bir Hasan	1	Local
	Borj Barajneh	14	Local
	Ghoubeiry	1	Local
	Hadath	3	Local
	Harat Horeik	2	Local
	Salima	1	Local
	Kahale	1	Local
	Under investigation	1	Local
Matn	Borj Hammoud	1	Local
	Dbaye	1	Local
	Dekwaneh	4	Local
	Dhour Choueir	1	Local
	Mansouriyeh	1	Local
	Mazraat Yachoua	1	Local
	Nakach	3	Local
Chouf	Barja	1	Local
	Wadi Zayne	1	Local
Aley	Aramoun	1	Local
	Bchamoun	1	Local
	Choueifat Omara	5	Local
	Choueifat Amrousiye	38	Local
	Hay Selom	2	Local
	Khalde	2	Local
	Bsatin	1	Local
	Under investigation	2	Local
Keserwan	Aintoura	1	Local
	Kaslik	1	Local
	Sahel Aalma	1	Local
	Sarba	1	Expat
	Zouk Mkayel	1	Local
	Under investigation	1	Expat
Byblos	Amchit	1	Local
	Fatra	1	Local
	Zebdine	1	Local
Koura	Daher Ain	1	Local
	Kfar Hazir	2	Local
	Ras Maska	1	Local
	Under Investigation	1	Local
Akkar	Wadi Jamous	1	Local
Baalback	Bsayle Tahta	1	Local
	Saarin Tahta	2	Local
Saida	Aankoun	4	Local
	Harat Saida	4	Local
	Zreriye	2	Local
	Under Investigation	5	Local
Tyre	Deir Kanoun Ain	1	Local
Nabatieh	Sarba	1	Local
	Aadchit El Chkef	1	Local
Bint Jbeil	Chagra	2	Local
	Under Investigation	1	Local
Marjeyoun	Houla	1	Local
	Under Investigation	1	Local
Under investigation	Under Investigation	75	Local/Expat
	Sum	224	

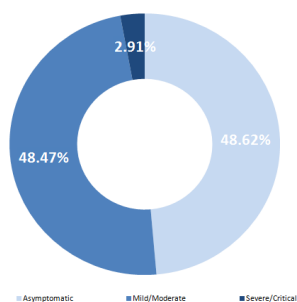


Comparison between Lebanon and other countries

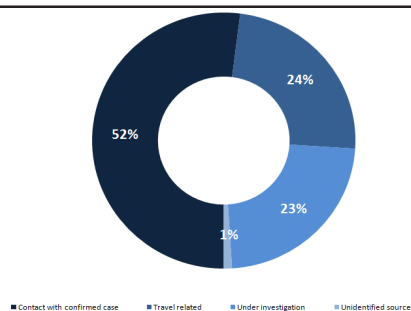
	Lebanon	Internationally
Total registered cases	4555	17,589,401
Total deaths	59	678,951
Percentage of deaths	1.29%	3.86%
Number of recoveries	1761	11,010,131

*the above data was last updated at 7 pm

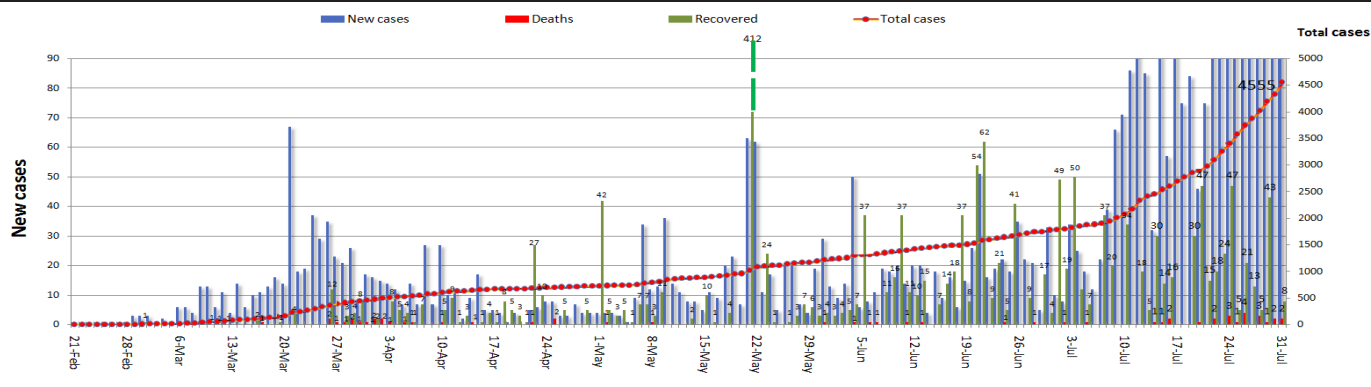
Status of cases



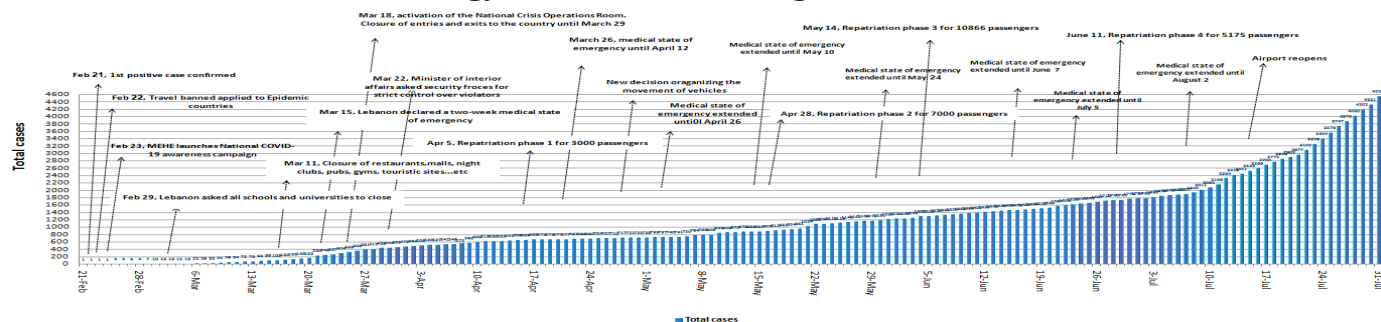
Exposure



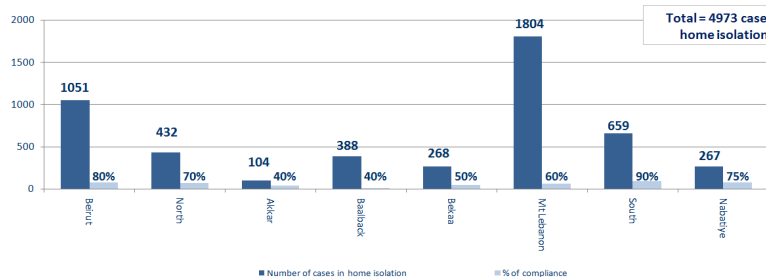
Cases per day



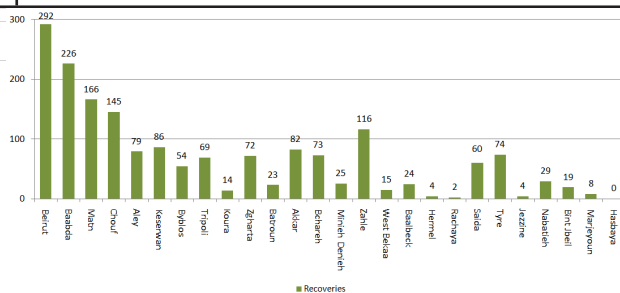
Chronology of decisions according to number of cases



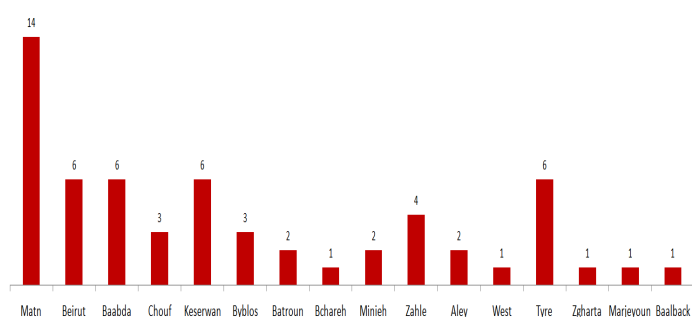
Number of individuals in home isolation and percent-age of commitment to isolation



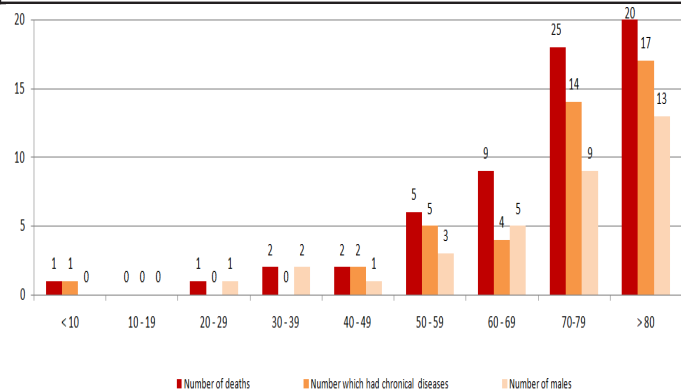
Distribution of recoveries by area



Distribution of deaths by governorates

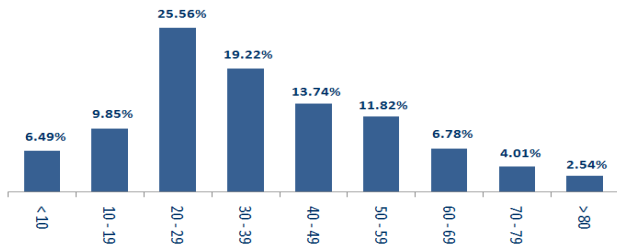


Distribution of deaths by age



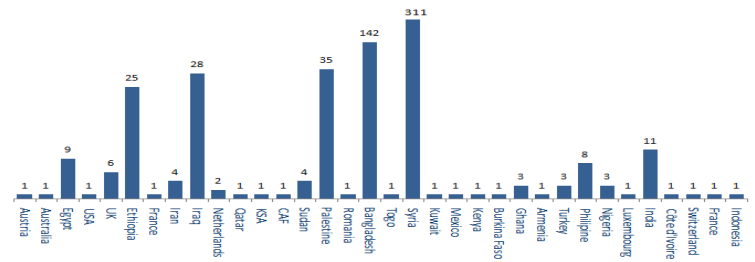
Distribution of cases by nationality

Distribution of cases by age group (%)

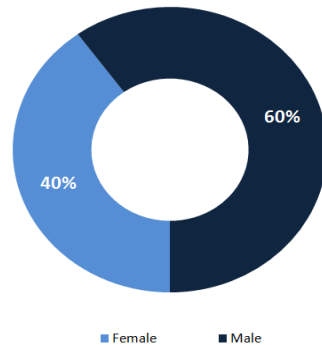


Distribution of cases by nationality

Lebanese : 3977 cases out of 4555 (84 %)



Distribution of cases by gender (%)



Decisions and actions taken

Ministry of Public Health

- The Ministry opened the Corona Department at Dr. Abdullah Al-Rassi Hospital in Halba, Akkar, with the support of the United Nations High Commissioner for Refugees in Lebanon.
- The Ministry of Public Health announced that Lebanon has become in the 4th stage which means the virus is at the level of a local outbreak. This requires a full commitment to safety procedures. Additionally, all cases that do not have the general safety conditions for isolation at home will be transferred to the approved quarantine centers.
- The ministry issued the results of PCR tests conducted for arrivals to Lebanon on July 26 and 27:

Number of positive cases	Flight nb	company	Arriving from
28/7/2020			
1	309	MEA	Cairo
1	159	FZ	Dubai
2			Total

-
-
- The ministry is following up on all positive cases and arrivals to Lebanon daily in both hospitals and home isolation.

Security services (Internal Security Forces, General Security, State Security, Army, General Directorate of Civil Defense)

- The army carried out patrols in different Lebanese regions, distributed food boxes to families in need (CIMIC) and dispersed gatherings.

- General Security Forces followed up on the airport's set regulations for the return of Lebanese expatriates to their homeland and tracked potential cases in various Lebanese regions and ensured that they're adhering to the terms of home isolation. forces also announce the municipalities being isolated.
- State security forces followed up on positive and suspected cases in home isolation. forces also announced the results on tests conducted on suspected cases. forces also announced the measures being taken in municipalities for preventing the spread of the virus.
- The General Directorate of Civil Defense prepared 427 personnel and 69 ambulances, to interfere, when necessary, and transport those infected with the emerging coronavirus.
- ISF aided the municipalities of Qarnayel (Baabda), Qalamoun (Tripoli), and Helaniyeh (Baalbek) in isolating the villages. ISF also number of fine

total fines issued to those who failed to adhere to the public mobilization decision since 8/3/2020		Number of fines issued in the past 24 hours				
19572	Beirut	15	Number of fines issued to institutions violating public mobilization decision			
		344	number of fines issued to individuals who weren't wearing a medical mask			
15951	Mount Lebanon	0	Fines issued to those who are failing to adhere to the general mobilization decision (hookah, social distancing)			
7800	Beqaa					
6298	North	South	North	Beqaa	Mount Lebanon	Beirut
5945	South	54	67	114	95	29
54666	Total	359				Total

Ministry of Foreign Affairs

- The Ministry communicates on a daily basis with foreign embassies that wish to evacuate their citizens in coordination with the National COVID Committee
- The Ministry is following up on the entry and exit of diplomats visiting Lebanon on official missions, in coordination with the relevant embassies.
- The Ministry is coordinating with the Syrian embassy in

Lebanon and with the General Directorate of General Security the movement of entry and exit through the border crossings to ensure the implementation of the procedures followed based on the decisions of the Council of Ministers.

- The Ministry is coordinating on a daily basis with the Lebanese missions on the development of the situation in their host countries and the situation of expatriates

Lebanese Red Cross

38165 154 new	Number of PCR tests transferred to laboratories	0	Number of additional ambulance centers ready to respond	47	ambulance centers	3150 30 new	cases transferred to hospitals
166	Number of volunteers trained to transfer PCR tests	1444	Number of trained paramedics	8461	total number of respondents	60966 10 new	number of those benefiting from awareness sessions
967	The number of university volunteers trained to follow up on prevention measures in companies and institutions	217	Number of university volunteers trained to conduct awareness sessions	550	total LRC volunteers for covid19	8272	number of trained managers for isolation centers
3761 2 new	Number of beneficiaries from educational electronic platforms COVID-19	67718 166 new	Number of distributed equipment **	1207656	total distributed posters, brochures, and flyers on covid19 prevention	383	number of prisons that have been disinfected

Examples of lack of adherence to safety measures

- Demonstration, and Roadblocks
- Overcrowding in restaurants and cafes and failure to comply with the permitted number of customers (50%)
- Gathering of citizens in hiking areas without committing to preventive measures
- Non-compliance of citizens with preventive measures
- Gathering in cafes
- hookah
- gatherings on beaches and sidewalks without wearing masks.
- social gatherings and celebrations and kids areas

Ministry of Interior and Municipalities

- issued circular no 76/2020 on 27/7/2020 regarding the amendment of the covid 19 precautionary measures based on decision no 137/2020 that was issued on 27/7/2020
- The Ministry issued Memorandum No. 78 on 29/07/2020 regarding the sectors exempted from closing during the lockdown periods: restaurants are allowed to operate from 6:00 am until 8:00 pm and are only allowed to provide take away and delivery services, while adhering to all safety measures and conditions. The decision also includes libraries, which are allowed to work from 6:00 am until 11:00 pm in compliance with preventive measure

Ministry of Public Works and Transport

- The General Directorate of Civil Aviation at the Ministry of Public Works and Transport issued Circular no. 45/2 on 28/7/2020 to all airplane companies and all arrivals to through the airport regarding new regulations in regards to PCR tests.

Port	entered			left		
	Import	Direction	#	export	Direction	#
Beirut				-	Greece	1
Tripoli	Fuel	Russia	1			
total		1				1

DEPARTING FLIGHTS		ARRIVING FLIGHTS	
47	NUMBER OF FLIGHTS	52	NUMBER OF FLIGHTS
3497	NUMBER OF DEPARTING INDIVIDUALS	4848	NUMBER OF ARRIVALS

General Decisions

- extended the general mobilization decision according to circular 6665/2020 from 3/8/2020 to 30/8/2020