



Lebanon National Operations Room

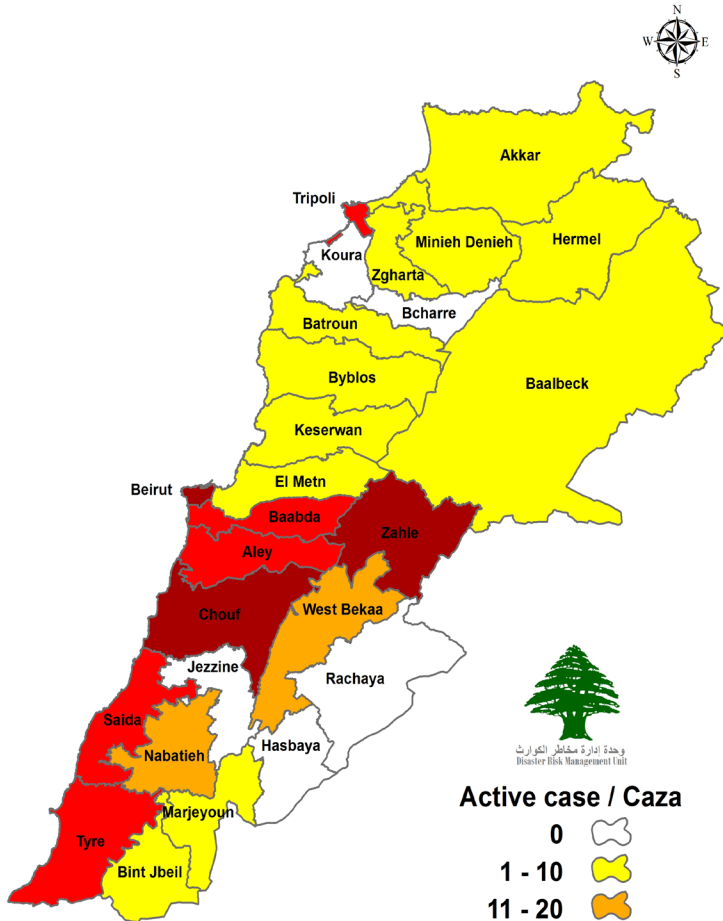
Daily Report on COVID-19

Tuesday, July 21, 2020

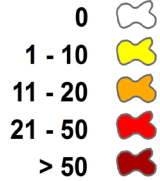
Report #125

Time published: 21:00

Number of Cases by Location



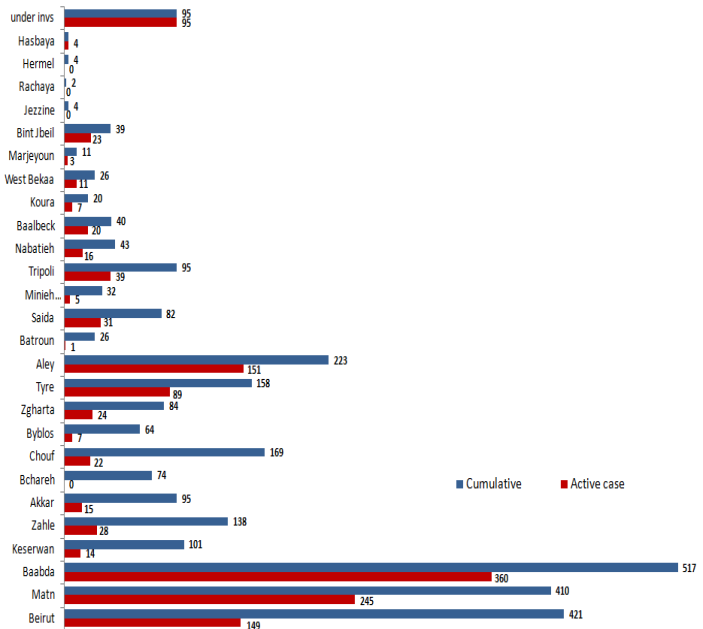
Active case / Caza



Municipality	Number of cases	Local/Expat
Achrafiyeh (Beirut)	3	Local
Hamra (Beirut)	2	Local
Rasika (Beirut)	1	Expat
Mraytkha (Beirut)	1	Local
Mar Elias (Beirut)	1	Local
Talat El Khayat (Beirut)	1	Expat
Zarif (Beirut)	1	Local
Mazraa (Beirut)	1	Expat
Barta (Beirut)	1	Local
Tarik Jdidah (Beirut)	2	Local
Bachoura (Beirut)	1	Local
Hadath (Baabda)	4	Local
Bir Hazan (Baabda)	1	Local
Barj El Barajneh (Baabda)	1	Local
Chiyah (Baabda)	2	Local
Farn El Shebak (Baabda)	1	Local
Ghaubairy (Baabda)	1	Local
Harat Hareik (Baabda)	1	Local
Qarnayel (Baabda)	1	Local
Jal Dib (Matn)	1	Local
Enkafar (Matn)	1	Local
Esslim (Matn)	1	Local
Fanar (Matn)	1	Local
Sakhiya (Matn)	1	Expat
Jiya (Chouf)	1	Local
Chaufat (Aley)	3	Local
Hay Salam (Aley)	2	Local
Chaufat Amrawiye (Aley)	1	Local
Amchit (Jbeil)	1	Local
Qartaba (Jbeil)	1	Local
Tarzaya (Jbeil)	1	Expat
Mina (Tripoli)	4	Local
Tripali (Tripoli)	1	Expat
Mezara (Zgharta)	1	Expat
Jdita (Zahle)	3	Local
Jalala (Zahle)	1	Local
Tamin (Baalbeck)	1	Local
Bakliya (Saïda)	3	Local
Ghaziyeh (Saïda)	1	Local
Ain (Tyre)	1	Local
Wadi Jala (Tyre)	1	Local
Arzoun (Tyre)	1	Local
Ain Sana (Nabatieh)	1	Local
Hakouch (Nabatieh)	1	Local
Chaur (Tyre)	1	Local
Jadidah (Marjeyoun)	3	Local
Under Investigation	9	Local
Sum	75	Local (7) Expat (2)

Total registered cases since Feb. 21	2977
locals	2162
Lebanese expats	815
Recoveries	1577
Deaths	41
Total registered cases in the past 24 hrs.	75
locals	63
Lebanese expats	12
Conducted PCR tests in labs since Feb. 21	223,527
PCR tests conducted for locals in the last 24 hrs. (in labs)	4927
Conducted PCR tests in airports in the past 24 hours	2017

1359 active cases
1279 in home isolation
80 are currently hospitalized
64 mild cases
16 in ICU

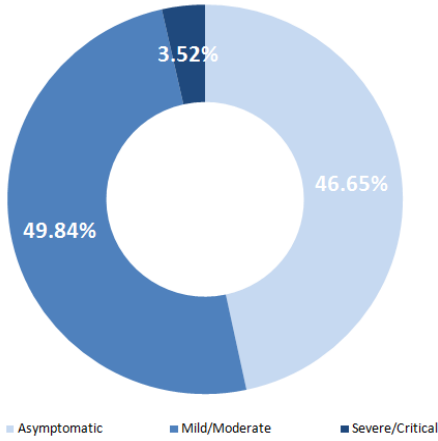


Comparison between Lebanon and other countries

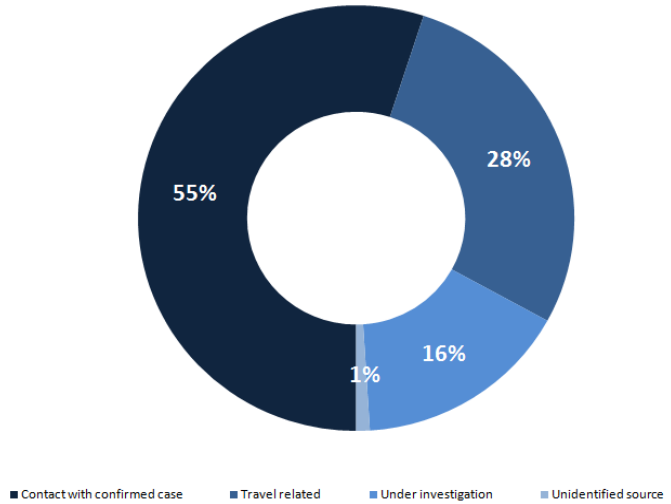
	Lebanon	Internationally
Total registered cases	2977	14,963,413
Total deaths	41	615,709
Percentage of deaths	1.37%	4.11%
Number of recoveries	1577	8,984,860

*the above data was last updated at 8 pm

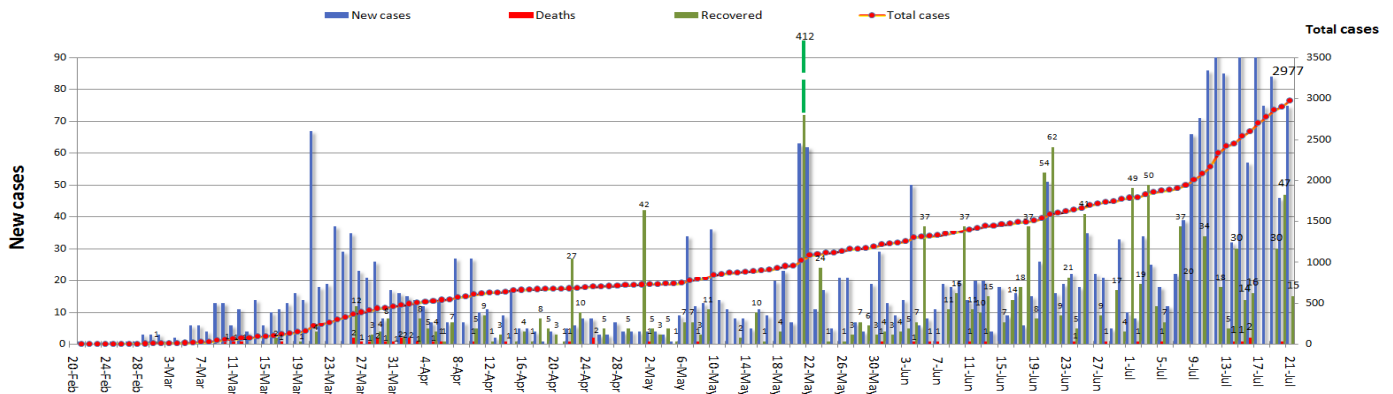
Status of cases



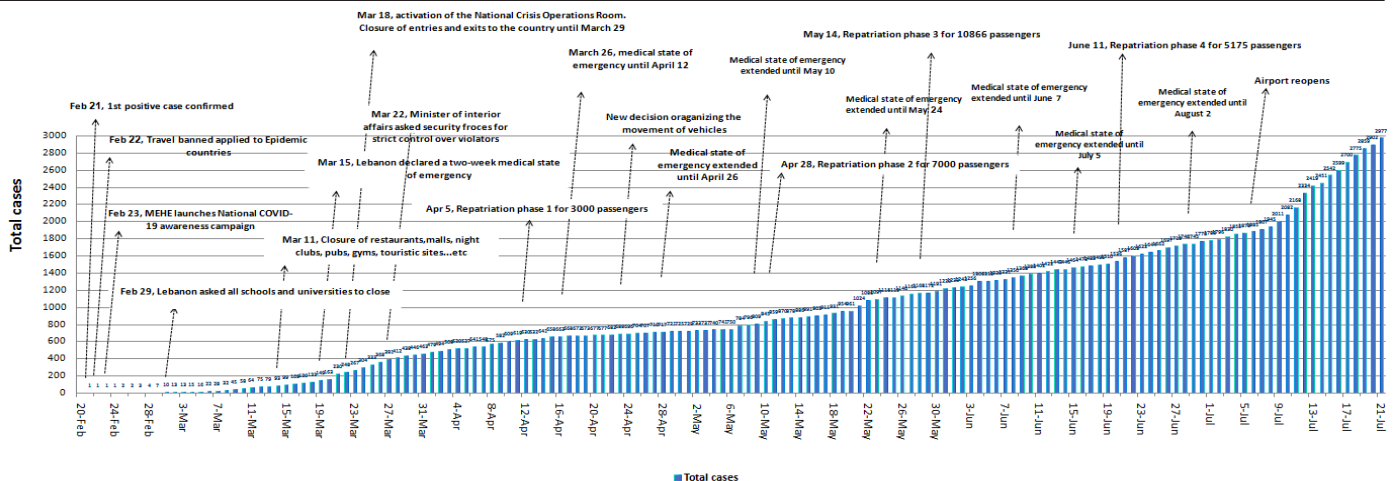
Exposure



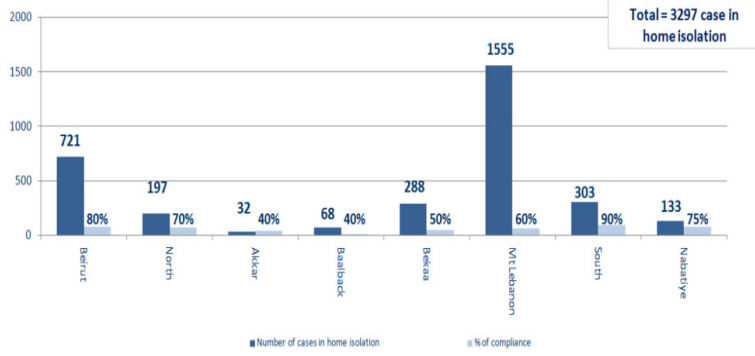
Cases per day



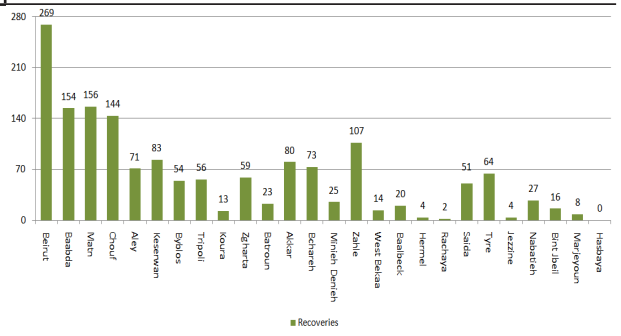
Chronology of decisions according to number of cases



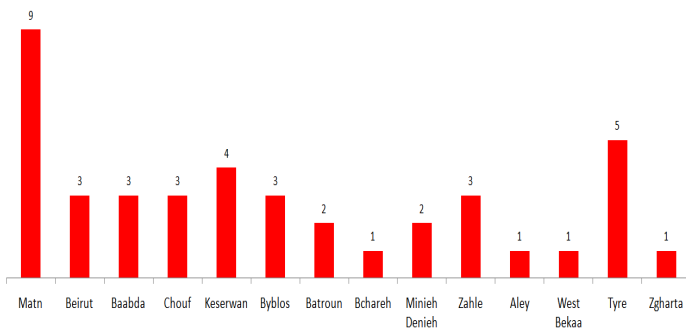
Number of individuals in home isolation and percent- age of commitment to isolation



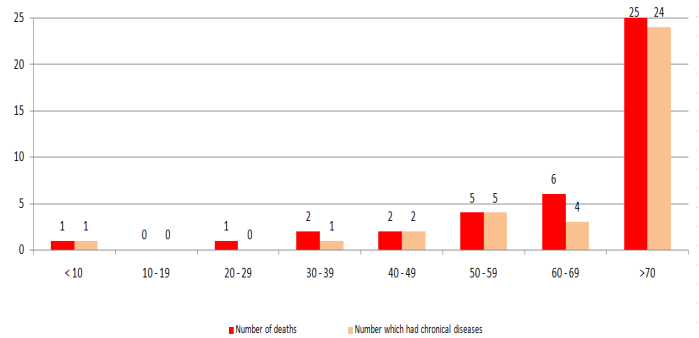
Distribution of recoveries by area



Distribution of deaths by governorates

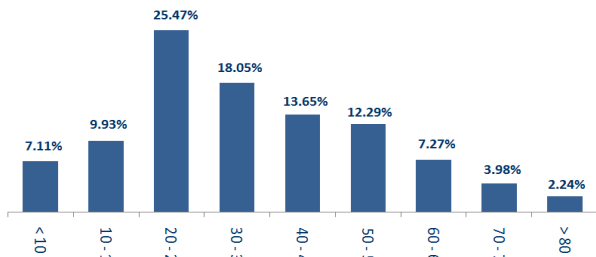


Distribution of deaths by age



Distribution of cases by age group

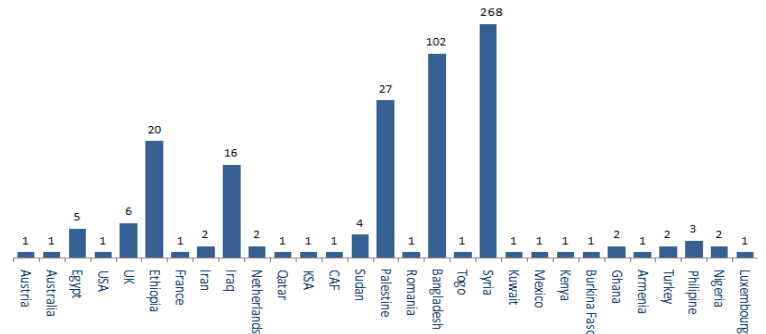
Distribution of cases by age group (%)



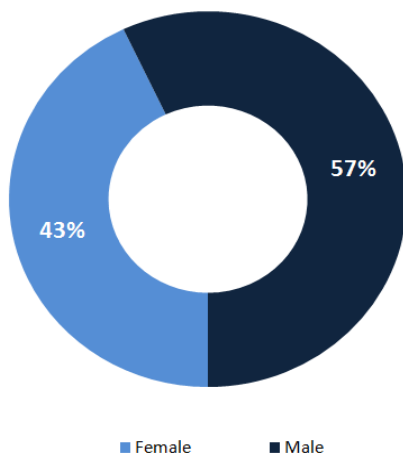
Distribution of cases by nationality

Distribution of cases by nationality

Lebanese : 2504 cases out of 2977 (83 %)



Distribution of cases by gender (%)



Examples of lack of adherence of safety measures

- Demonstration, and Roadblocks
- Violations of curfew, and the medical mask decisions
- Failure of commercial stores, supermarkets, and others to comply with the closing hours
- Overcrowding in restaurants and cafes and failure to comply with the permitted number of customers (50%)
- gatherings in front of banks, money transfer offices and ATM machines without maintaining a safe distance or putting masks
- Gathering of citizens in hiking areas without committing to preventive measures
- Non-compliance of citizens with preventive measures in food markets
- Gathering in cafes
- hookah
- gatherings on beaches and sidewalks without wearing masks.
- social gatherings and celebrations and kids areas



Decisions and actions taken

Ministry of Public Health

- The Ministry of Public Health is discussing with the French embassy the possibility of enhancing national capabilities and raising its readiness by adopting a new technique for early diagnosis of COVID-19 through. this technique involves trained dogs who can smell the virus.
- The Ministry of Public Health sponsored the IAEA (Lebanese Atomic Energy Authority) which will provide two fully-equipped PCR laboratories as a gift to Lebanon, to be delivered to both the Hariri Governmental University Hospital and the Military Hospital.
- The Ministry of Public Health announced that Lebanon has become in a stage that falls in between the third and fourth phases, which projects that the virus is at the level of local outbreak. This requires a full commitment to safety procedures. additionally all cases that do not have the general safety conditions for isolation at home will be transferred to the approved quarantine centers.
- The ministry issued the results of PCR tests conducted for arrivals to Lebanon on July 19:

Number of positive cases	Flight nb	company	Arriving from
2020/7/19			
1	406	ETHIOPIAN	Addis Ababa
2	566	AIR FRANCE	Paris
1	4404	WLO	Adana
2	418	QATAR	Doha
6			total

- The Ministry of Public Health launched the application "Together against coronavirus MA3AN" to track contacts of positive cases and reduce the spread of Coronavirus. the

application can be downloaded for free on mobile phones

- The Ministry is working on setting a clear mechanism for transporting positive or suspected cases from the returnees to government hospitals directly, and transporting positive cases with no symptoms to quarantine centers.
- The Ministry is working to assess the airport's opening on the virus' reality in the country.
- increasing number of conducted PCR tests on suspected cases in areas where the virus has spread to assess the situation.
- Following up on the application of Circular No. 2/37 which was issued on 4/7/2020 in coordination with the national covid committee related to the procedures approved by the Ministry of Public Health for all travelers coming to Lebanon.
- The ministry supervises all the conducted PCR tests for those who were in contact with positive cases in various government hospitals, at the expense of the ministry in order to determine the epidemiological reality in Lebanon and take the necessary steps.

Security services (Internal Security Forces, General Security, State Security, Army, General Directorate of Civil Defense)

- The army carried out patrols in different Lebanese regions, distributed food boxes to families in need (CIMIC) and dispersed gatherings.
- General Security Forces followed up on the airport's set regulations for the return of Lebanese expatriates to their homeland and tracked potential cases in various Lebanese regions and ensured that they're adhering to the terms of home isolation.
- State security forces followed up on positive and suspected cases in home isolation. forces also announced the results on

tests conducted on suspected cases. forces also announced the measures being taken in municipalities for preventing the spread of the virus

- The General Directorate of Civil Defense prepared 427 personnel and 69 ambulances, to interfere, when necessary, and transport those infected with the emerging coronavirus. The directorate also carried out sterilization missions in public and private areas and in labs conducting PCR tests.
- ISF aided the municipalities in isolation buildings where positive ramco workers were placed and issued a number of fine

total fines issued to those who failed to adhere to the public mobilization decision since 8/3/2020	number of fines issued to individuals whoweren't wearing a medical mask (since 29/5/2020)
50152	2919 7 new

Lebanese Red Cross

34107 282 new	Number of PCR tests transferred to laboratories	0	Number of additional ambulance centers ready to respond	47	ambulance centers	2780 27 new	cases transferred to hospitals
166	Number of volunteers trained to transfer PCR tests	1444	Number of trained paramedics	8396	total number of respondents	64793 246 new	number of those benefiting from awareness *sessions
967	The number of university volunteers trained to follow up on prevention measures in companies and institutions	217	Number of university volunteers trained to conduct awareness sessions	550	total LRC volunteers for covid19	8184	number of trained managers for isolation centers
3627 6 new	Number of beneficiaries from educational electronic 📺 platforms COVID-19	44484 2072 new	Number of distributed equipment **	1207656	total distributed posters, brochures, and flyers on covid19 prevention	370	number of rprisons that have been disinfected

Note: The Lebanese Red Cross transported 131 workers who were confirmed positive in Jdeideh to the designated isolation center in Carintina

Ministry of Public Works and Transport

- The General Directorate of Civil Aviation at the Ministry of Public Works and Transport issued Circular No. 44/2 on 7/21/2020 to all airlines operating in Rafic Hariri International Airport regarding the transportation of passengers to Syria via the airport, where they were asked not to allow these passengers to board the planes heading to Lebanon without having conducted a PCR test that yielded a negative result maximum 96 hours prior the date of the flight, in addition to not transporting foreign passengers to Syria via the airport without the prior approval of the Syrian authorities with the exception of the Palestinian refugees in Syria and members of international organizations and diplomatic missions operating in Syria.

Port	entered		left			
	Import	Direction	#	export	Direction	#
Beirut	Containers	Interior	1			
	Containers	Latakia	1			
			2			

DEPARTING FLIGHTS		ARRIVING FLIGHTS	
28	NUMBER OF FLIGHTS	28	NUMBER OF FLIGHTS
2082	NUMBER OF DEPARTING INDIVIDUALS	2814	NUMBER OF ARRIVALS

General Decisions

- In light of the health developments in Baalbek and in order to prevent the spread of the epidemic, the municipality issued a decision to close the Marjah Ras Al-Ain Park starting Tuesday 21/7/2020 and to close the sports city and to suspend all sports activities starting from Wednesday 7/22 / 2020, until the epidemiological curve in the city is determined.

Ministry of Foreign Affairs

- The Ministry communicates on a daily basis with foreign embassies that wish to evacuate their citizens in coordination with the National COVID Committee
- The Ministry is following up on the entry and exit of diplomats visiting Lebanon on official missions, in coordination with the relevant embassies.
- The Ministry is coordinating with the Syrian embassy in Lebanon and with the General Directorate of General Security the movement of entry and exit through the border crossings to ensure the implementation of the procedures followed based on the decisions of the Council of Ministers.
- The Ministry is coordinating on a daily basis with the Lebanese missions on the development of the situation in their host countries and the situation of expatriates