



# Lebanon National Operations Room

## Daily Report on COVID-19

Friday, July 17, 2020

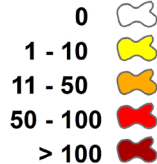
Report #121

Time published: 20:00

### Number of Cases by Location



#### Active case / Caza

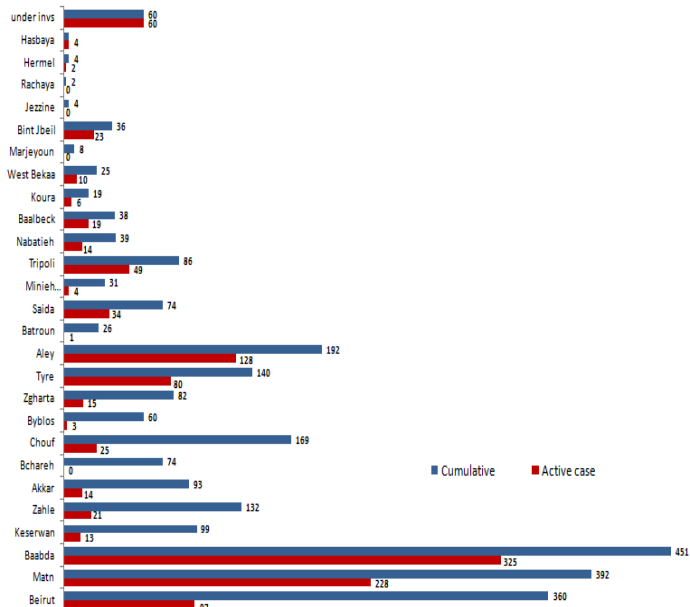


Municipality	Number of cases	Local/Expat
Hamra (Beirut)	5	Expat
Tarik Jadidah (Beirut)	3	Local
Mazraa (Beirut)	1	Local
Achrafije (Beirut)	1	Local
Fawshe (Beirut)	1	Local
Baabda (Baabda)	8	Local
Chiyah (Baabda)	2	Local
Harat Horeik (Baabda)	5	Local
Hadath (Baabda)	3	Expat
Ghoubeiry (Baabda)	2	Local
Jnah (Baabda)	1	Local
Laglake (Baabda)	1	Local
Ouzali (Baabda)	1	Local
Mrajieh (Baabda)	1	Local
Bet Chaar (Matn)	1	Expat
Agroun (Matn)	1	Expat
Rabieh (Matn)	1	Expat
Sin El Fil (Matn)	1	Expat
Bremana (Matn)	1	Local
Bkennaya (Matn)	1	Local
Dbayeh (Matn)	1	Local
Kfar Him (Chouf)	1	Local
Siblin (Chouf)	1	Local
Sawfar (Aley)	5	Local
Bchamoun (Aley)	5	Local
Choueifat (Aley)	2	Local
Khalde (Aley)	2	Local
Aley (Aley)	1	Expat
Safra (Keserwan)	1	Local
Edeba (Koura)	1	Expat
Majdaja (Zgharta)	1	Local
Al Chan (Akkar)	1	Local
Marj (West Bekaa)	1	Local
Ebatalige (Saida)	1	Local
Rachidige (Tyre)	3	Local
Chhour (Tyre)	8	Local
Magfoudon (Nabatieh)	1	Local
Borj Qalaway (Bint Jbeil)	2	Local
Chagra (Bint Jbeil)	1	Local
Aitaroun (Bint Jbeil)	1	Expat
Ain Jarfa (Hasbaya)	2	Local
Under investigation	12	Expat (6) / Local (6)
<b>Sum</b>	<b>101</b>	

Total registered cases since Feb. 21	2700
locals	1954
Lebanese expats	746
Recoveries	1485
Deaths	40
Total registered cases in the past 24 hrs.	101
locals	80
Lebanese expats	21
Conducted PCR tests in labs since Feb. 21	201067
PCR tests conducted in the last 24 hrs. (in labs and in the airport)	4319
Conducted PCR tests in airports in the past 24 hours	2419

#### 1175 active cases

1112 in home isolation
63 are currently hospitalized
51 mild cases
12 in ICU

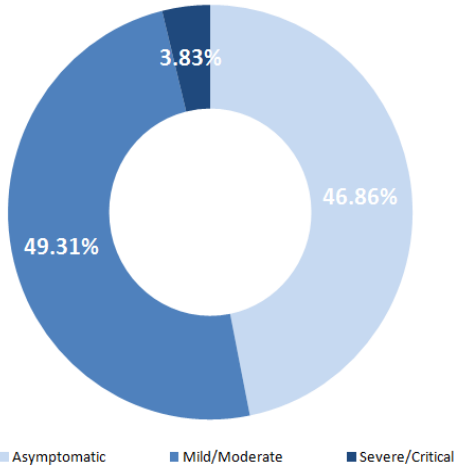


## Comparison between Lebanon and other countries

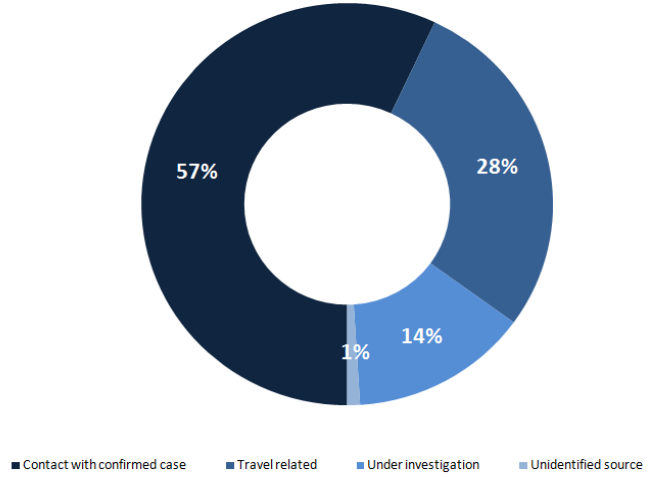
	Lebanon	Internationally
<b>Total registered cases</b>	<b>2700</b>	<b>14,056,839</b>
<b>Total deaths</b>	<b>40</b>	<b>594,971</b>
<b>Percentage of deaths</b>	<b>1.48%</b>	<b>4.23%</b>
<b>Number of recoveries</b>	<b>1485</b>	<b>8,358,402</b>

\*the above data was last updated at 7 pm

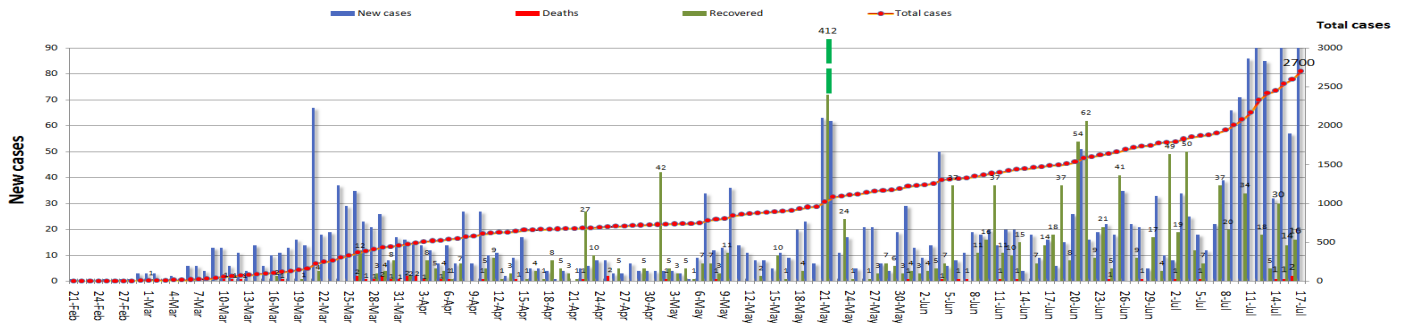
### Status of cases



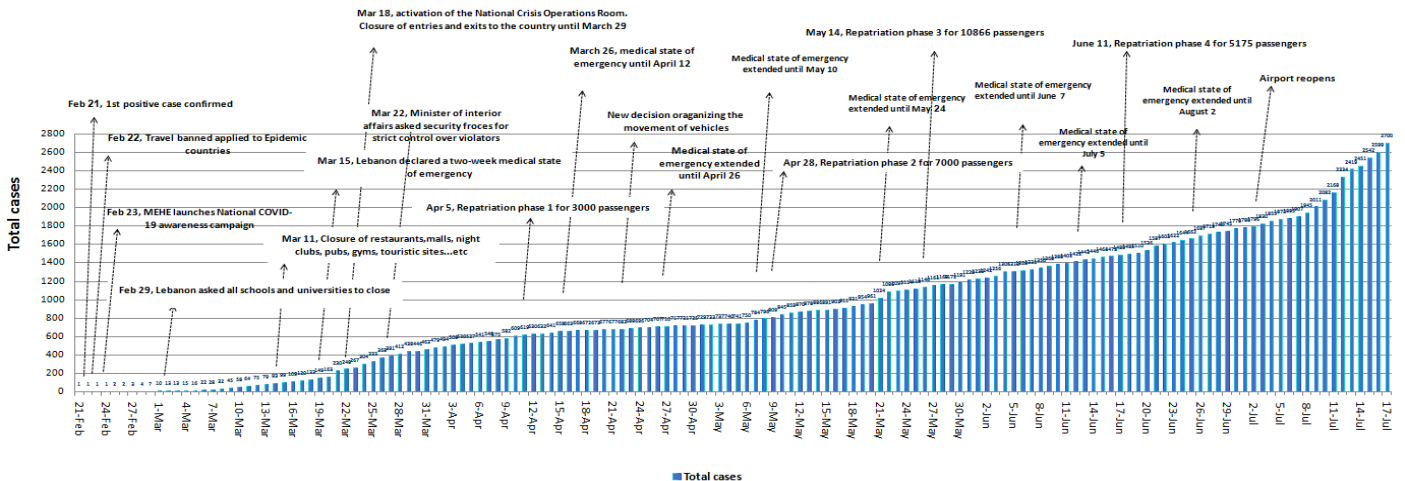
### Exposure



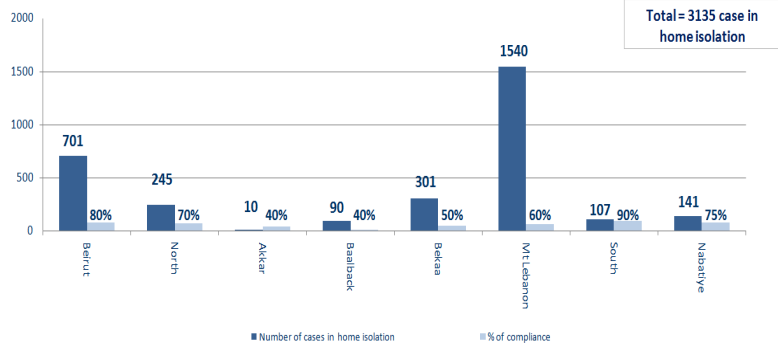
## Cases per day



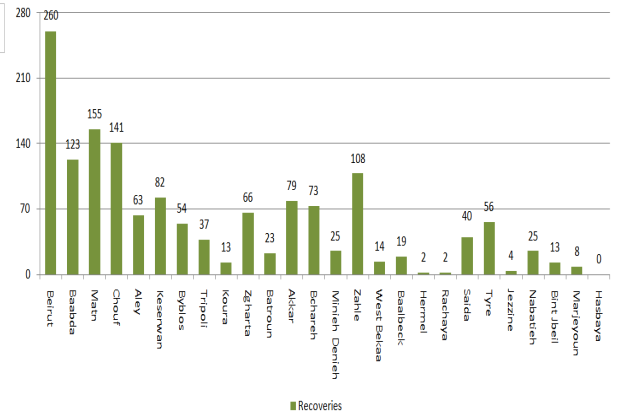
## Chronology of decisions according to number of cases



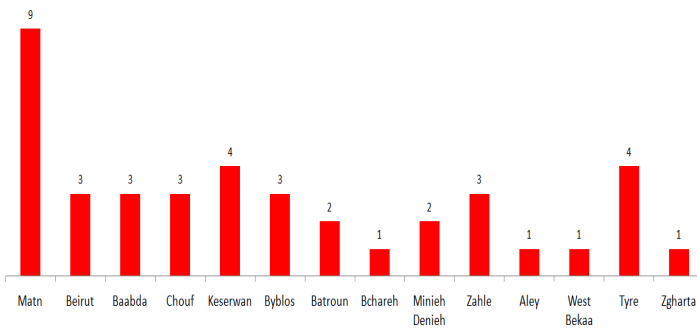
## Number of individuals in home isolation and percentage of commitment to isolation



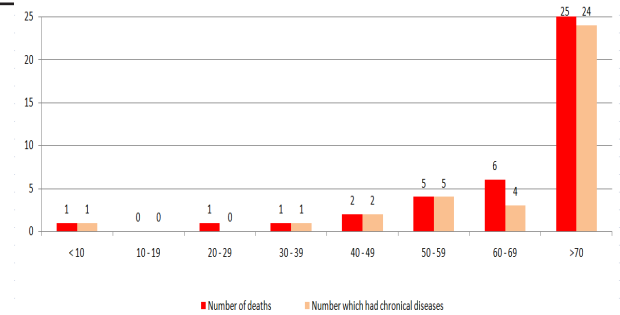
## Distribution of recoveries by area



## Distribution of deaths by governorates

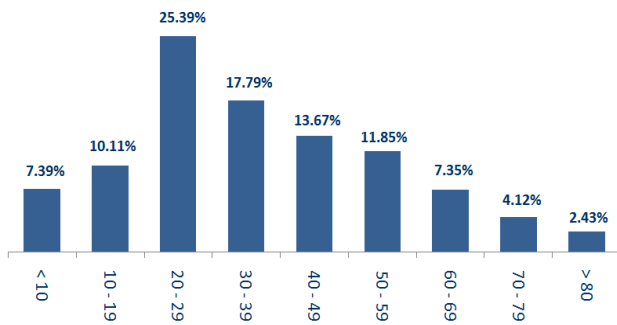


## Distribution of deaths by age



## Distribution of cases by age group

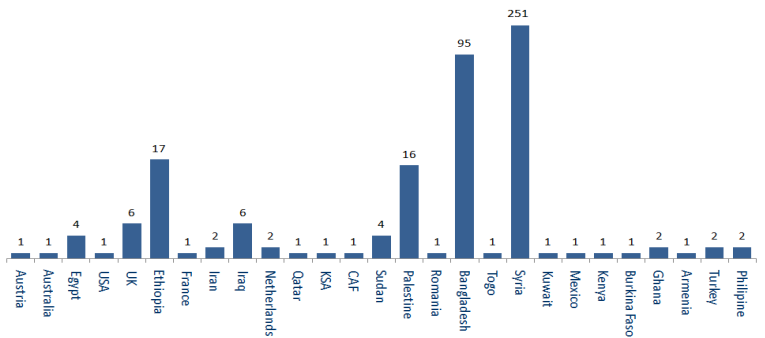
### Distribution of cases by age group (%)



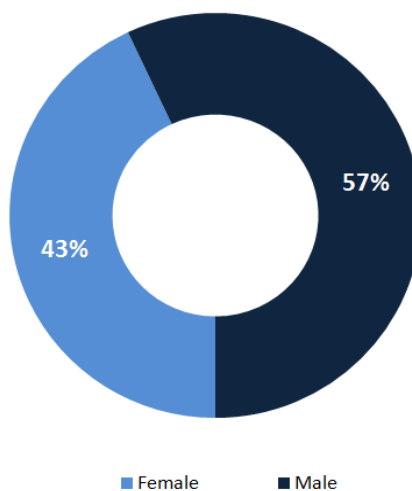
## Distribution of cases by nationality

### Distribution of cases by nationality

Lebanese : 2289 cases out of 2700 ( 83 % )

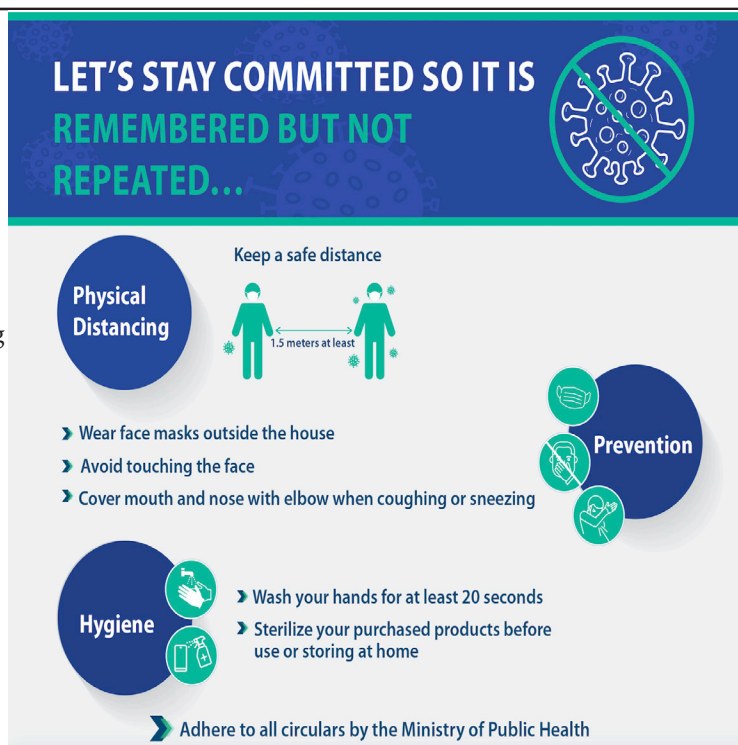


## Distribution of cases by gender (%)



## Examples of lack of adherence of safety measures

- Demonstration, and Roadblocks
- Violations of curfew, and the medical mask decisions
- Failure of commercial stores, supermarkets, and others to comply with the closing hours
- Overcrowding in restaurants and cafes and failure to comply with the permitted number of customers (50%)
- gatherings in front of banks, money transfer offices and ATM machines without maintaining a safe distance or putting masks
- Gathering of citizens in hiking areas without committing to preventive measures
- Non-compliance of citizens with preventive measures in food markets
- Gathering in cafes
- hookah
- gatherings on beaches and sidewalks without wearing masks.
- social gatherings and celebrations and kids areas



## Decisions and actions taken

### Ministry of Public Health

- - The Ministry of Public Health launched the application “Together against coronavirus MA3AN” to track contacts of positive cases and reduce the spread of Coronavirus. the application can be downloaded for free on mobile phones
- The Ministry is developing and implementing a project to strengthen the health system in Lebanon in cooperation with the World Bank. the project will increase the Ministry’s ability to assess the capacity of the health sector in Lebanon to respond to the pandemic, secure the necessary medical equipment and tools, and build the capacity of sector workers to counter the virus.
- The Ministry called for strict adherence to precautions and preventive measures in large institutions. It also called for the commitment of expatriates to the general mobilization procedures.
- The Ministry is working on setting a clear mechanism for transporting positive or suspected cases from the returnees to government hospitals directly, and transporting positive cases with no symptoms to quarantine centers.
- The Ministry is working to assess the airport’s opening on the virus’ reality in the country.
- increasing number of conducted PCR tests on suspected cases in areas where the virus has spread to assess the situation.
- Following up on the application of Circular No. 2/37 which was issued on 4/7/2020 in coordination with the national covid committee related to the procedures approved by the Ministry of Public Health for all travelers coming to Lebanon.
- The ministry supervises all the conducted PCR tests for those who were in contact with positive cases in various government hospitals, at the expense of the ministry in order to

determine the epidemiological reality in Lebanon and take the necessary steps.

### Security services (Internal Security Forces, General Security, State Security, Army, General Directorate of Civil Defense)

- The army carried out patrols in different Lebanese regions, distributed food boxes to families in need (CIMIC) and dispersed gatherings.
- General Security Forces followed up on the airport’s set regulations for the return of Lebanese expatriates to their homeland and tracked potential cases in various Lebanese regions and ensured that they’re adhering to the terms of home isolation.
- State security forces followed up on positive and suspected cases in home isolation. forces also announced the results on tests conducted on suspected cases. forces also announced that a meeting was held at the Hasbaya District Medical Center to follow up on the developments of the Corona virus outbreak in the town of Ain Jarfa and take the necessary measures to prevent the transmission of the epidemic to other towns in the Hasbaya
- The General Directorate of Civil Defense prepared 427 personnel and 69 ambulances, to interfere, when necessary, and transport those infected with the emerging coronavirus. The directorate also carried out sterilization missions in public and private areas and in labs conducting PCR tests.
- ISF issued a number of fine

## Lebanese Red Cross

31297 689 new	Number of PCR tests transferred to laboratories	0	Number of additional ambulance centers ready to respond	47	ambulance centers	2689 37 new	cases transferred to hospitals
166	Number of volunteers trained to transfer PCR tests	1444	Number of trained paramedics	8368	total number of respondents	64313 127 new	number of those benefiting from awareness sessions
967	The number of university volunteers trained to follow up on prevention measures in companies and institutions	217	Number of university volunteers trained to conduct awareness sessions	550	total LRC volunteers for covid19	8148	number of trained managers for isolation centers
3606 17 new	Number of beneficiaries from educational electronic platforms COVID-19	42412 293 new	Number of distributed equipment **	1207050	total distributed posters, brochures, and flyers on covid19 prevention	386 5 new	number of prisons that have been disinfected

Note: The Lebanese Red Cross transported 131 workers who were confirmed positive in Jdeideh to the designated isolation center in Carintina

## Ministry of Public Works

- Monitoring the application of circulars issued by the General Directorate of Civil Aviation related to the procedures that must be followed by arrivals to Lebanon and those departing.

Port	entered		left		
	Import	Direction #	export	Direction	#
BEIRUT	Goods	Abu Qir 1	Containers	Latakia	1
	containers	Limasol 2			
TRIPOLI			Empty	Greece	1
		3			2
DEPARTING FLIGHTS		ARRIVING FLIGHTS			
32	NUMBER OF FLIGHTS	34	NUMBER OF FLIGHTS		
2363	NUMBER OF DEPARTING INDIVIDUALS	3491	NUMBER OF ARRIVALS		