



Lebanon National Operations Room

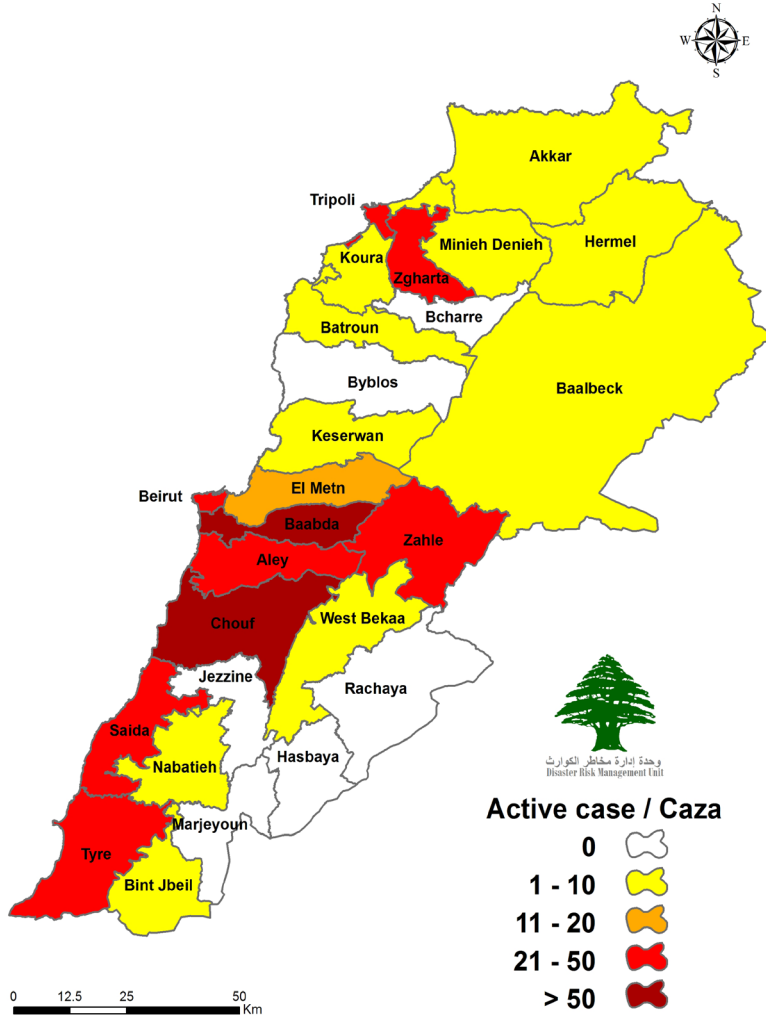
Daily Report on COVID-19

Wednesday, July 1, 2020

Report #105

Time published: 19:00

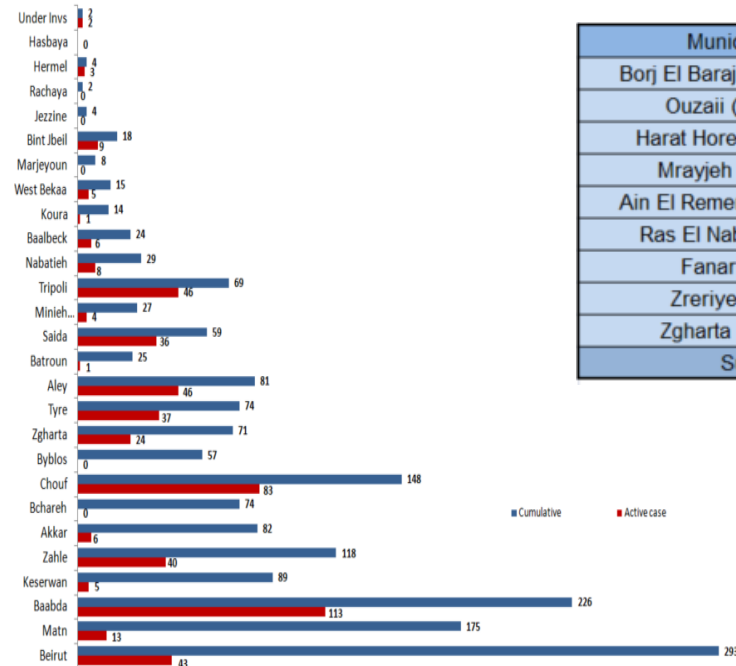
Number of Cases by Location



وحدة ادارة مخاطر الكوارث
Disaster Risk Management Unit

Active case / Caza

- 0
- 1 - 10
- 11 - 20
- 21 - 50
- > 50



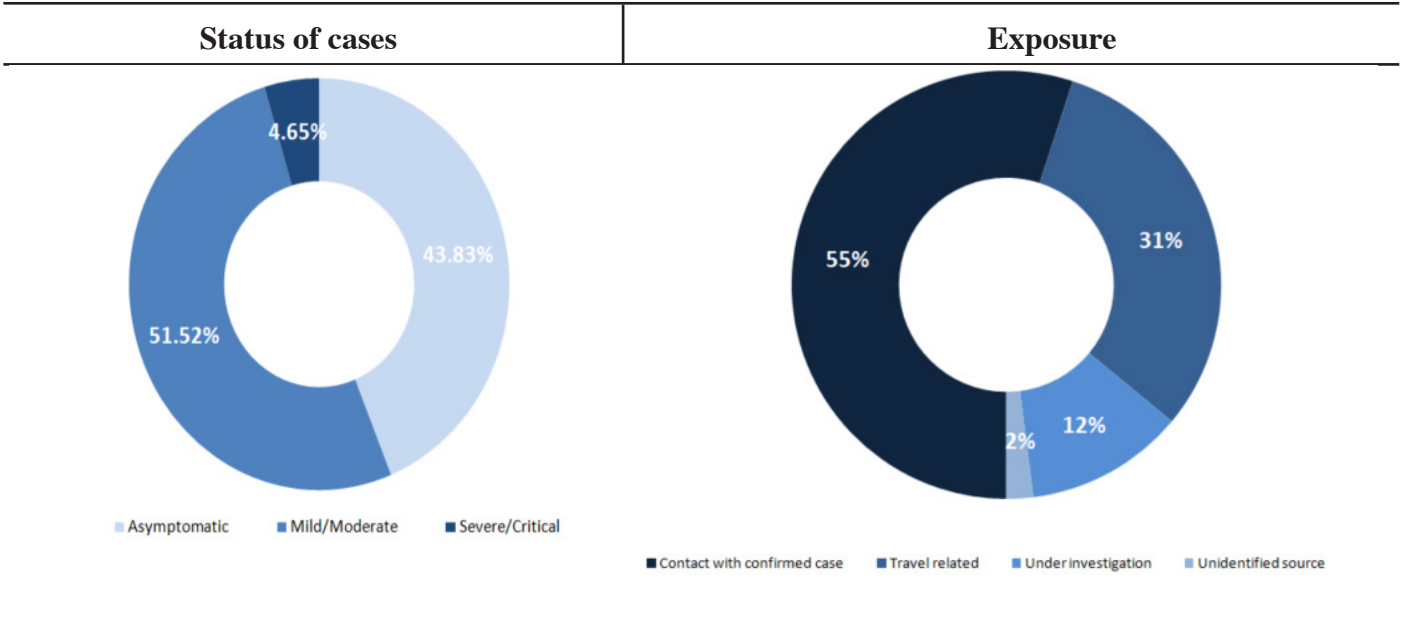
Total registered cases since Feb. 21	1788
locals	1235
Lebanese expats	553
Recoveries	1223
Deaths	34
Total registered cases in the past 24 hrs.	10
locals	9
Lebanese expats	1
Conducted PCR tests in labs since Feb. 21	135,222
PCR tests conducted in the last 24 hrs. (in labs and in the airport)	3023
531 active cases	
506 in home isolation	
25 are currently hospitalized	
17 mild cases	
8 in ICU	

Municipality	Number of cases	Local/Expat
Borj El Barajneh (Baabda)	1	Local
Ouzaii (Baabda)	1	Local
Harat Horeik (Baabda)	1	Local
Mrayjeh (Baabda)	1	Local
Ain El Remeneh (Baabda)	1	Expat
Ras El Nabea (Beirut)	1	Local
Fanar (Matn)	1	Local
Zreriye (Saida)	1	Expat
Zgharta (Zgharta)	2	Local
Sum	10	

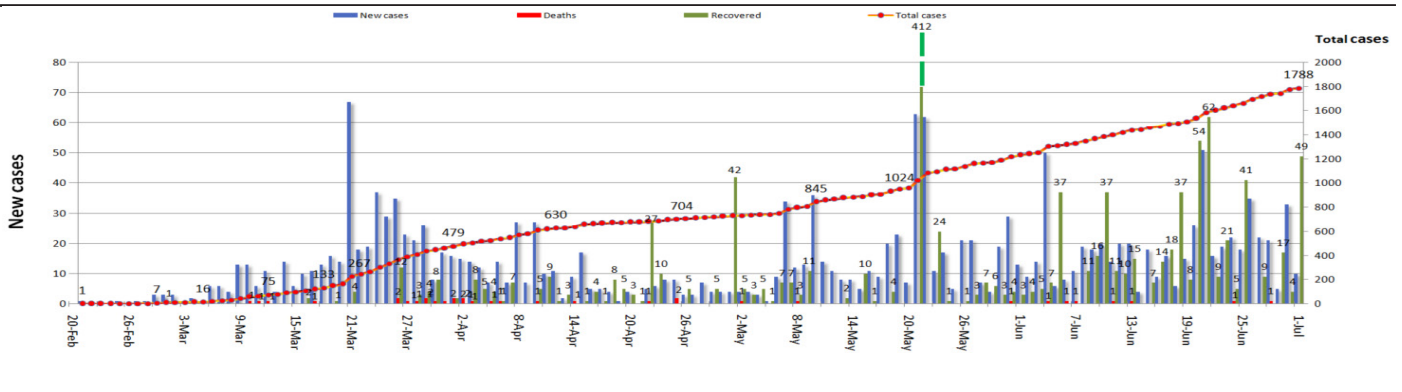
Comparison between Lebanon and other countries

	Lebanon	Internationally
Total registered cases	1788	10,629,824
Total deaths	34	514,979
Percentage of deaths	1.9%	4.84%
Number of recoveries	1223	5,833,660

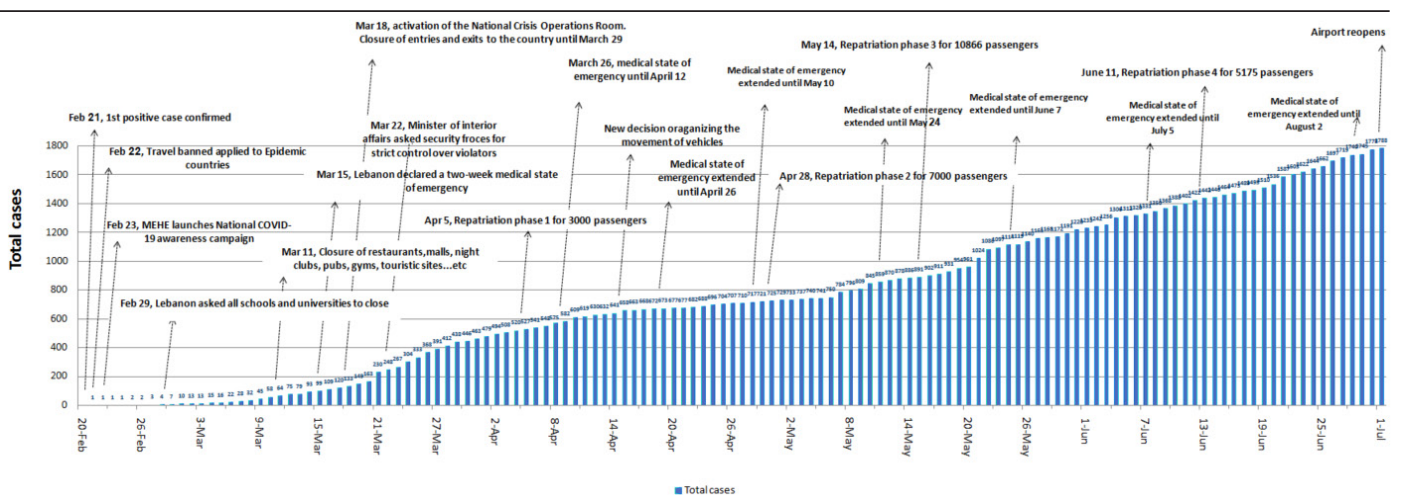
*the above data was last updated at 5 pm



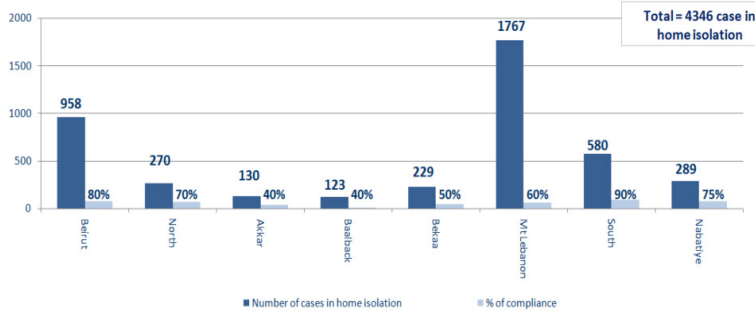
Cases per day



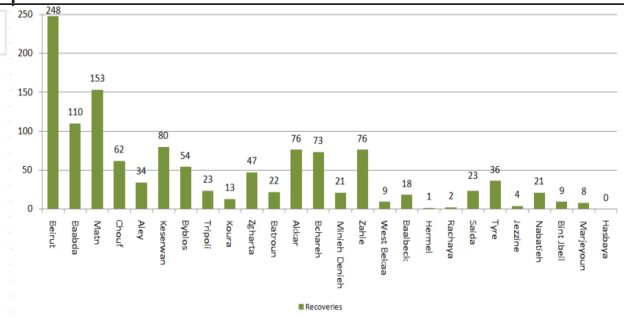
Chronology of decisions according to number of cases



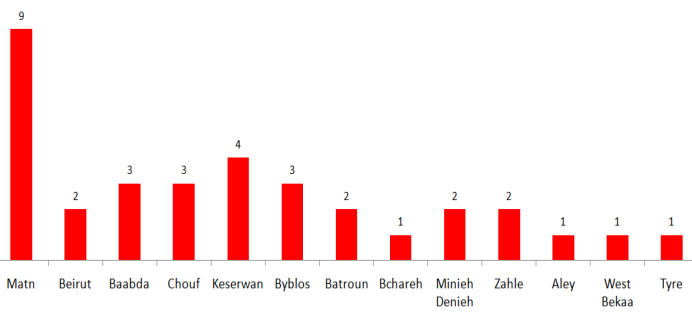
Number of individuals in home isolation and percent- age of commitment to isolation



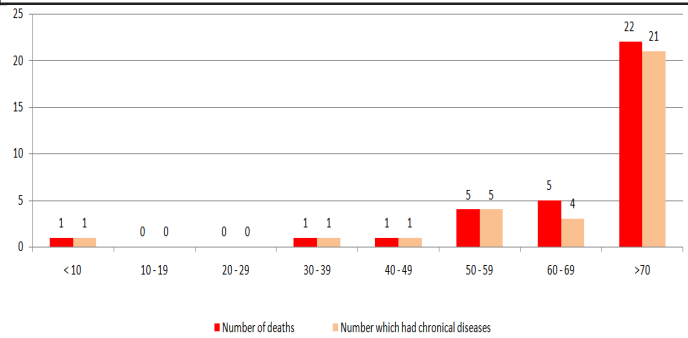
Distribution of recoveries by area



Distribution of deaths by governorates

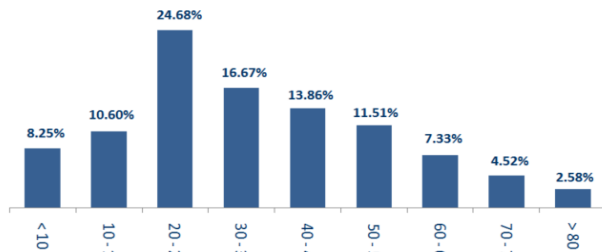


Distribution of deaths by age



Distribution of cases by age group

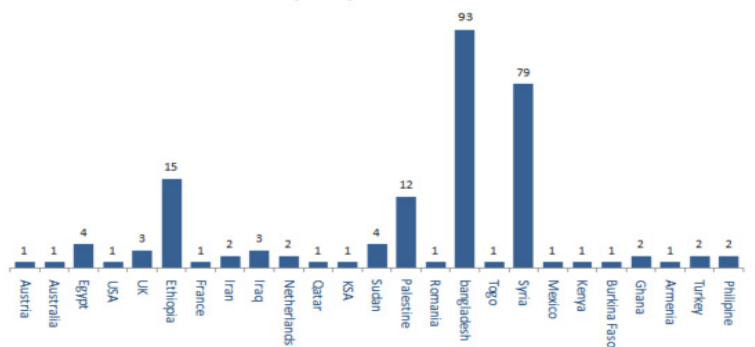
Distribution of cases by age group (%)



Distribution of cases by nationality

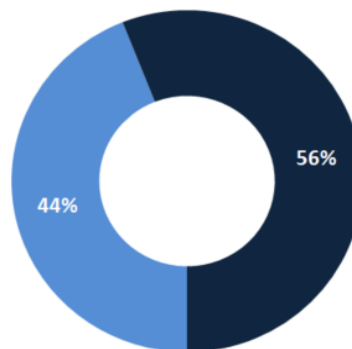
Distribution of cases by nationality

Lebanese: 1554 cases out of 1788 (87 %)



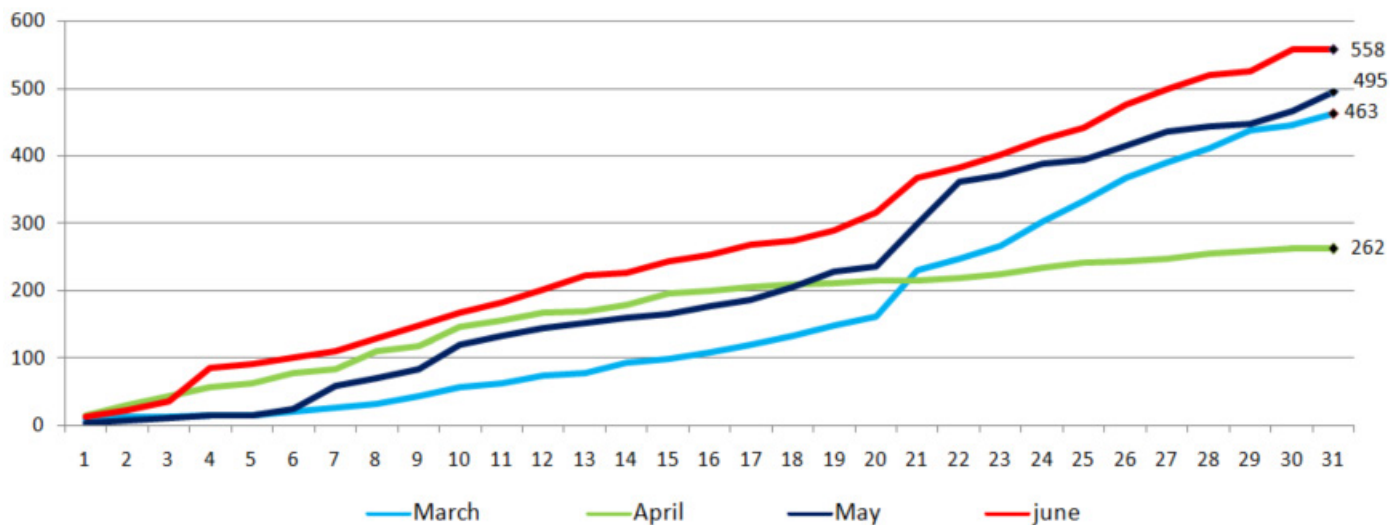
Distribution of cases by gender

Distribution of cases by gender (%)

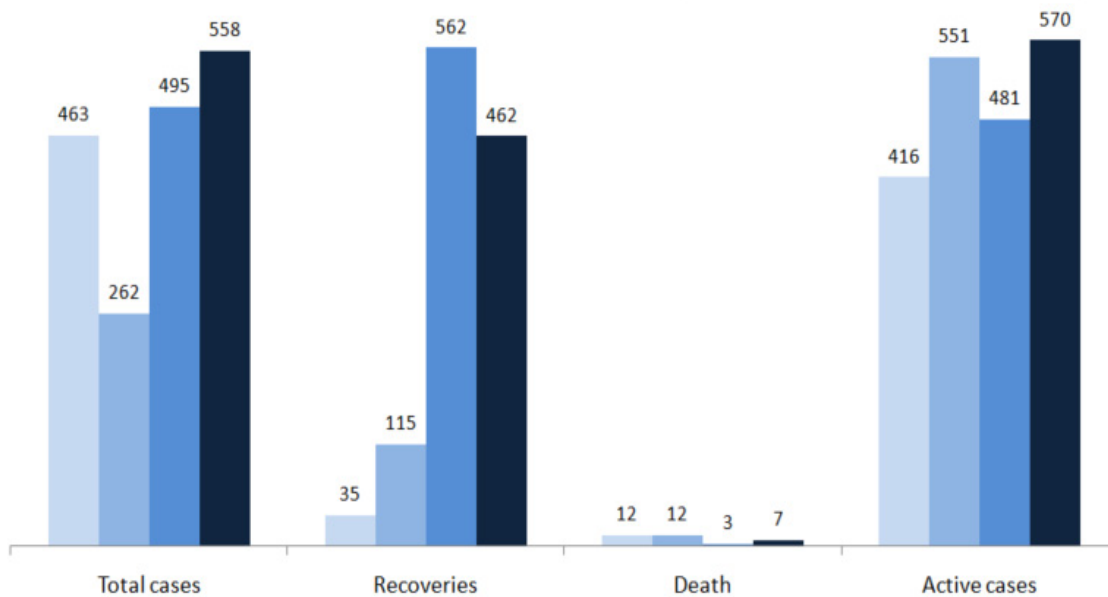


Female Male

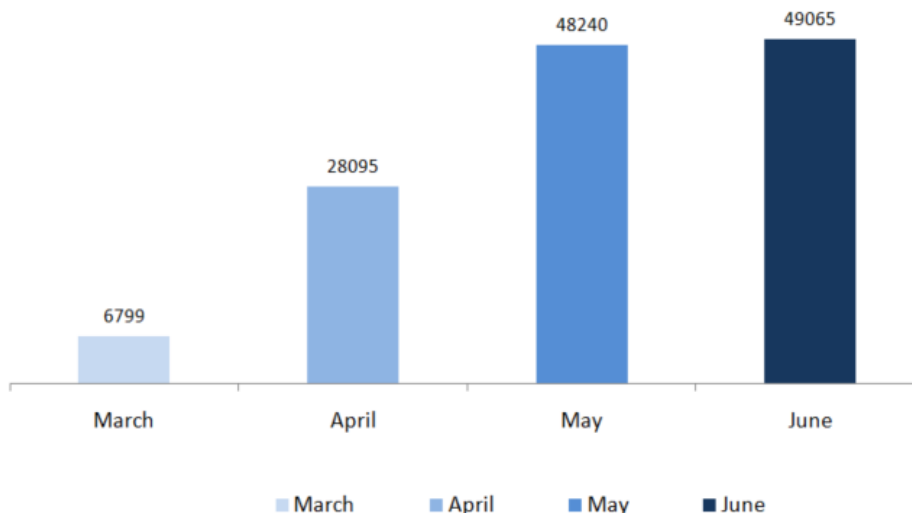
Comparison of the epidemiological curve between the months of March - April - May 2020



Comparison of the number of injuries, recoveries and deaths between March - April - May - June 2020



The number of PCR tests conducted in March - April - May - June 2020



Examples of lack of adherence of safety measures

- Demonstration, and Roadblocks
- Violations of curfew, and the medical mask decisions
- Failure of commercial stores, supermarkets, and others to comply with the closing hours
- Overcrowding in restaurants and cafes and failure to comply with the permitted number of customers (50%) gatherings in front of banks, money transfer offices and ATM machines without maintaining a safe distance or putting masks
- Gathering of citizens in hiking areas without committing to preventive measures
- Non-compliance of citizens with preventive measures in food markets
- Gathering in cafes
- hookah
- gatherings on beaches and sidewalks without wearing masks.
- social gatherings and celebrations and kids areas



Decisions and actions taken

Ministry of Public Health

- The ministry is following up on issued circular nb 99 on 30/6/2020 stating the specific regulations that should be followed by those arriving to Lebanon starting July 1
- The Ministry is visiting areas where the pandemic has spread to follow up on the implementation of isolation and is following up with Lebanese who have recently returned to Lebanon.
- The ministry supervises all the conducted PCR tests for those who were in contact with positive cases in various government hospitals, at the expense of the ministry in order to determine the epidemiological reality in Lebanon and take the necessary steps.

Lebanese Red Cross

26947 new 114)	Number of PCR tests transferred to laboratories	0	Number of additional ambulance centers ready to respond	47	ambulance centers	2356 new 5	cases transferred to hospitals
166	Number of volunteers trained to transfer PCR tests	1444	Number of trained paramedics	7943 new 18	total number of respondents	62242 new 56	number of those benefiting from awareness sessions
967	The number of university volunteers trained to follow up on prevention measures in companies and institutions	217	Number of university volunteers trained to conduct awareness sessions	550	total LRC volunteers for covid19	7712 new 18	number of trained managers for isolation centers
3364 new 19	Number of beneficiaries from educational electronic platforms حرج COVID-19	41412 346 (new)	Number of distributed equipment **	1203519	total distributed posters, brochures, and flyers on covid19 prevention	343	number of prisons that have been disinfected

* Includes: COVID-19 awareness sessions; awareness about the measures to take when returning to work and advanced training for field workers.

** Includes: medical and sterilization equipment.

Security services (Internal Security Forces, General Security, State Security, Army, General Directorate of Civil Defense)

- The army carried out patrols in different Lebanese regions to disperse gatherings and distributed food units (CIMIC)
- General Security Forces followed up on the airport's set regulations for the return of Lebanese expatriates to their homeland and tracked potential cases in various Lebanese regions and ensured that they're adhering to the terms of home isolation. forces also announced the results of PCR tests of suspected cases and refugees
- ISF issued a number of fines:

fines issued since March 8, 2020		fines issued in the past 24 hours	
3520	institutions	0	institutions
13940	individuals	0	individuals
2799	medical masks since (2020/5/29)	4	medical masks
20258	total	4	total

- State security forces followed up on suspected and positive cases and made sure they're adhering to the necessary precautions and isolation measures. forces also announced the names of municipalities in which the virus is spreading as a result of close contact between suspected cases.
- The General Directorate of Civil Defense prepared 427 personnel and 69 ambulances, to interfere, when necessary, and transport those infected with the emerging coronavirus. The directorate also carried out sterilization missions in public and private areas and in labs conducting PCR tests.

Ministry of Interior and Municipalities

-
- The Ministry issued Circular No. 63 / 2020 on 1/7/2020 which cancels the curfew decision and the opening times of industrial and commercial establishments so that all institutions open within the official working hours without exceptions. Nonetheless, institutions should abide by measures of prevention and public safety.

Ministry of Public Works

- Monitoring the application of circulars issued by the General Directorate of Civil Aviation related to the procedures that must be followed by arrivals to Lebanon and those attending the airport, from travelers and workers, starting from 1/7/2020.

Number of individuals departing	Number of those arriving to Lebanon	number of passenger trips	Number of private place
19	810	20	12

Port	entered			left		
	Import	Direction	#	export	Direction	#
beirut	livestock	Tarragona	1	empty	greece	1
	containers	tripoli	1			
		2				1

Railways and joint transportation

Borders and Airport

-Transporting those arriving to Lebanon via Rafic Hariri International Airport or Syrian borders to the isolation centers in coordination with the Ministry of Public Health and security forces (25 buses)

General Decisions

- Based on the decision of the Council of Ministers on 30/6/2020 and based on the advice of the Supreme Council of Defense, the general mobilization decision was extended until 2/8/2020.