



Lebanon National Operations Room

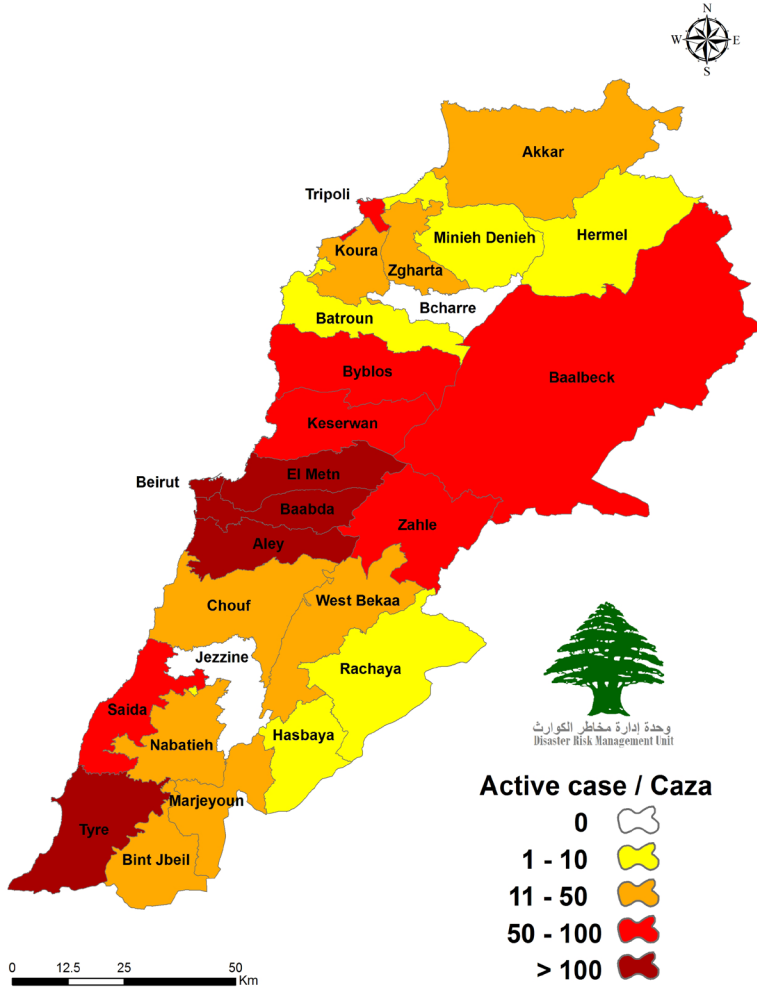
Daily Report on COVID-19

Monday, August 3, 2020

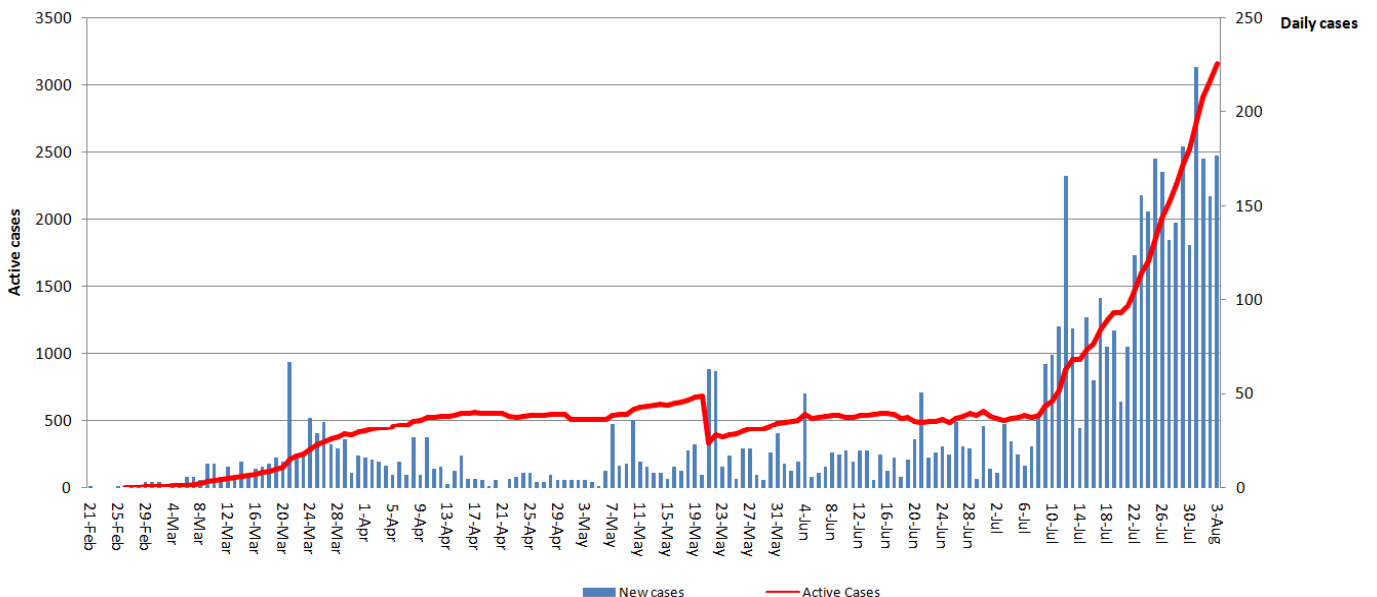
Report #138

Time published: 20:00

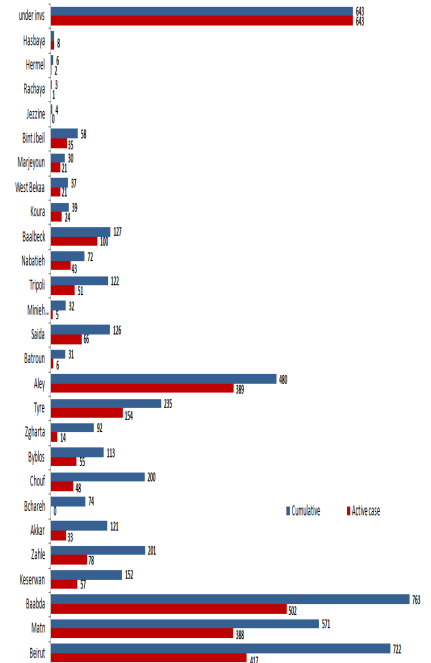
Number of Cases by Location



Total registered cases since Feb. 21	5062
locals	4022
Lebanese expats	1040
Recoveries	1837
Deaths	65
Total registered cases in the past 24 hrs.	177
locals	159
Lebanese expats	18
Conducted PCR tests in labs since Feb. 21	320607
PCR tests conducted for locals in the last 24 hrs. (in labs)	4202
Conducted PCR tests in airports in the past 24 hours	1805
3160 active cases	
3002 in home isolation	
158 are currently hospitalized	
118 mild cases	
40 in ICU	



Caza	Municipality	Number of cases	Local/Expat
Beirut	Hamra	3	Local
	Rawshe	2	Local
	Mar Elias	2	Local
	Zarif	1	Local
	Basta	1	Local
	Tarik Jadidah	7	Local
	Ras Nabeeaa	1	Local
	Achrafiye	1	Local
	Under investigation	11	Local/Expat
Baabda	Ain Remeneh	1	Local
	Bir Hasan	1	Local
	Borj El Barajneh	3	Local
	Chiyah	1	Local
	Hadath	1	Local
	Harat Horeik	1	Local
	Aaraya	1	Local
	Louaize	1	Local
	Jnah	1	Local
	El Khraybe	1	Local
	Mrayje	1	Local
		Under investigation	6
Matn	Ain Saade	1	Local
	Dekwaneh	2	Local
	Zalka	2	Local
		Under investigation	4
Chouf	Under investigation	2	Local
Aley	Aramoun	5	Local
	Ain Anoub	1	Local
	Bchamoun	2	Local
	Choueifat Omara	1	Local
	Choueifat Amrousiye	2	Local
	Hay Selom	2	Local
	Kayfoun	1	Expat
	Khalde	2	Expat
	Under investigation	1	Local
Keserwan	Jounieh Sarba	1	Local
	Under investigation	1	Local
Byblos	Under investigation	1	Local
Tripoli	Under investigation	1	Expat
Koura	Under investigation	1	Local
Zgharta	Under investigation	1	Local
West Bekaa	Machghara	1	Expat
	Under investigation	1	Local
Baalback	Hellaniye	1	Local
	Younine	1	Local
	Under investigation	1	Local
Saida	Kharayeb	1	Expat
Tyre	Tyre	1	Expat
	Jal El Baher El Chemali	1	Local
	Under investigation	2	Local
Nabatieh	Under investigation	1	Local
Marjeyoun	Under investigation	1	Local
Under investigation	Under Investigation	78	Local/Expat

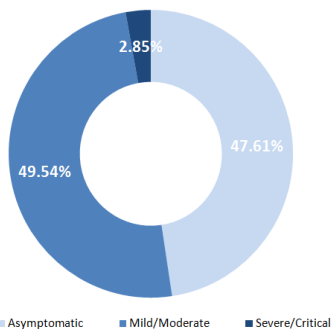


Comparison between Lebanon and other countries

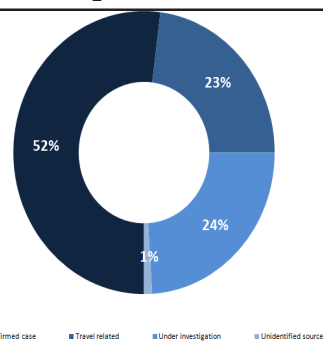
	Lebanon	Internationally
Total registered cases	5062	18,305,490
Total deaths	65	694,057
Percentage of deaths	1.28%	3.79%
Number of recoveries	1837	11,508,987

*the above data was last updated at 7 pm

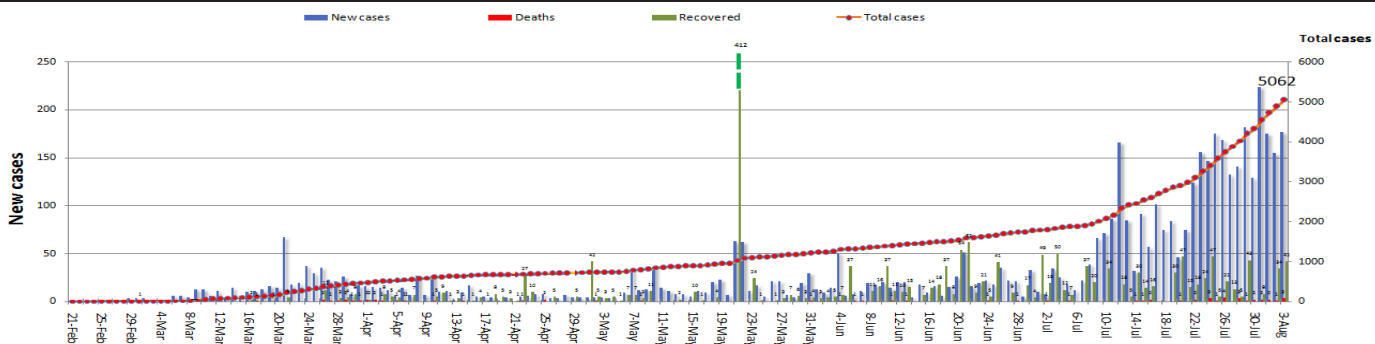
Status of cases



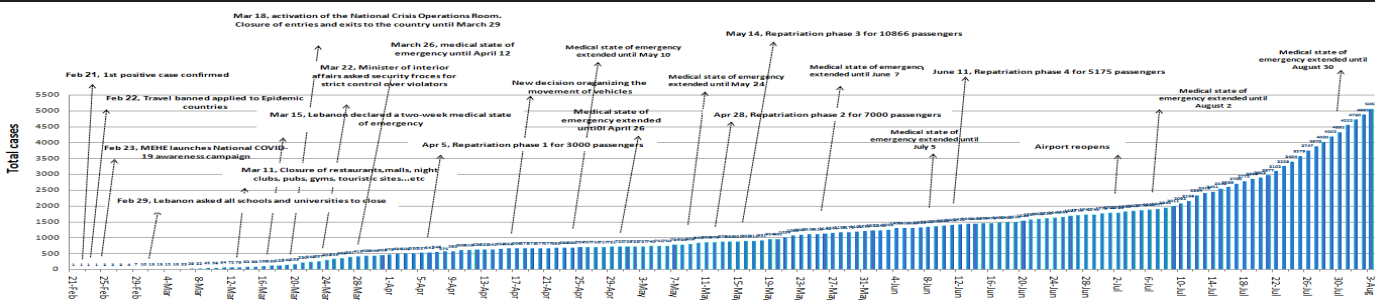
Exposure



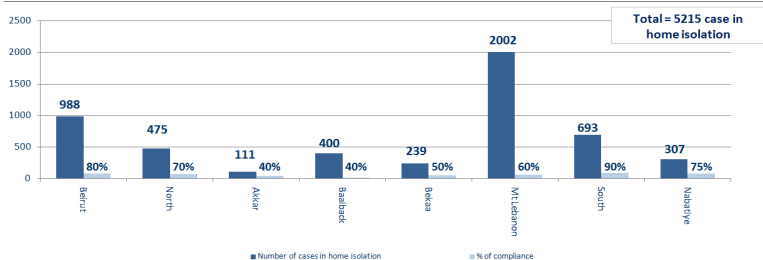
Cases per day



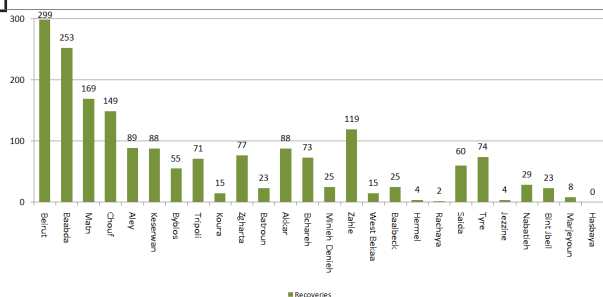
Chronology of decisions according to number of cases



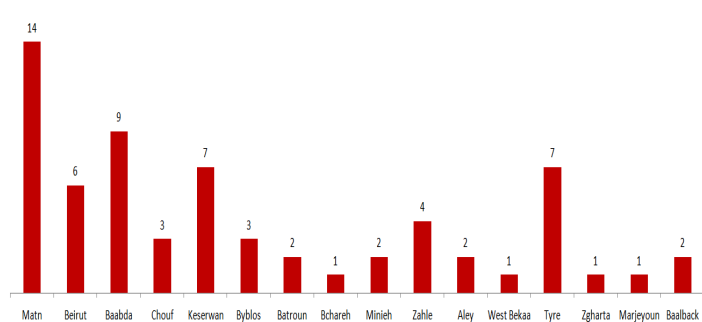
age of commitment to isolation



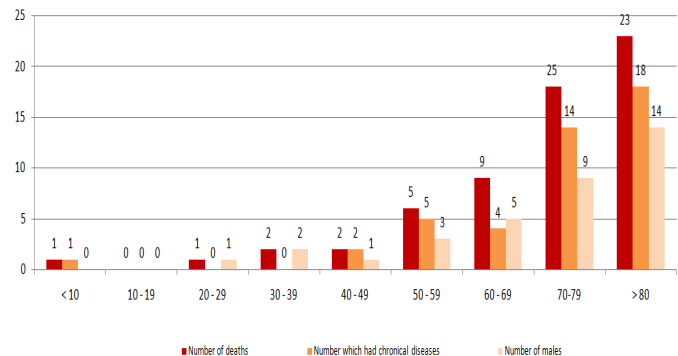
Distribution of recoveries by area



Distribution of deaths by governorates

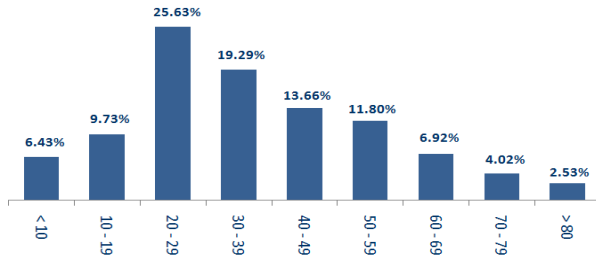


Distribution of deaths by age



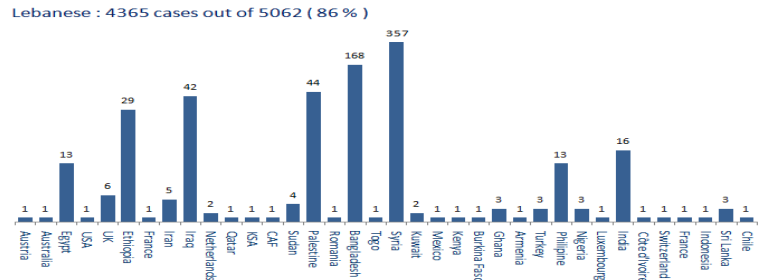
Distribution of cases by age group

Distribution of cases by age group (%)

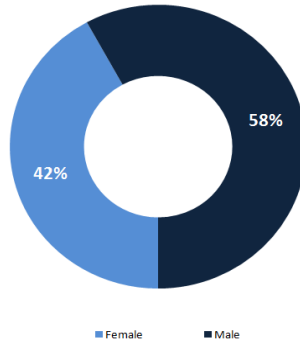


Distribution of cases by nationality

Distribution of cases by nationality



Distribution of cases by gender (%)



Decisions and actions taken

Ministry of Public Health

- in coordination with the COVID committee, the ministry is measuring the spread of the virus and discussing the necessary steps that should be taken.
- The ministry is following up on all positive cases and arrivals to Lebanon daily-in both hospitals and home isolation.
- the ministry is increasing the number of conducted PCR tests in different Lebanese regions to examine the level of the virus' spread in the country.
- issued the results of the PCR tests conducted for arrivals to Lebanon on 30/7 and 31/7

Number of positive cases	Flight nb	company	Arriving from
30/7/2020			
1	242	MEA	Madrid
1	181	RB Company	Damascus
2	333	MEA	Basra
31/7/2020			
1	313	Egyptian company	Egypt
4	576	MEA	Abidjan
2	426	Qatari company	Doha
2	212	MEA	Paris
1	1311	Iraqi company	Baghdad
14			Total

Security services (Internal Security Forces, General Security, State Security, Army, General Directorate of Civil Defense)

- The army carried out patrols in different Lebanese regions, distributed food boxes to families in need (CIMIC) and dispersed gatherings.
- General Security Forces followed up on the airport's set regulations for the return of Lebanese expatriates to their homeland and tracked potential cases in various Lebanese regions and ensured that they're adhering to the terms of home isolation.

forces also announce the municipalities being isolated.

- State security forces followed up on positive and suspected cases in home isolation. forces also announced the results on tests conducted on suspected cases. forces also announced the measures being taken in municipalities for preventing the spread of the virus.
- The General Directorate of Civil Defense prepared 427 personnel and 69 ambulances, to interfere, when necessary, and transport those infected with the emerging coronavirus.
- ISF aided the municipalities of Qalamoun (Tripoli), and Helaniyeh (Baalbek) in isolating the villages. ISF also number of fine

total fines issued to those who failed to adhere to the public mobilization decision since 8/3/2020		Number of fines issued in the past 24 hours				
19771	Beirut	10	Number of fines issued to institutions violating public mobilization decision			
		382	number of fines issued to individuals who weren't wearing a medical mask			
16286	Mount Lebanon	21	Fines issued to those who are failing to adhere to the general mobilization decision (hookah, social distancing)			
7151	Beqaa	413		Total		
6382	North	South	North	Beqaa	Mount Lebanon	Beirut
6044	South	67	47	84	128	87
55634	Total					

Ministry of Foreign Affairs

- The Ministry communicates on a daily basis with foreign embassies that wish to evacuate their citizens in coordination with the National COVID Committee
- The Ministry is following up on the entry and exit of diplomats visiting Lebanon on official missions, in coordination with the relevant embassies.

- The Ministry is coordinating with the Syrian embassy in Lebanon and with the General Directorate of General Security the movement of entry and exit through the border crossings to ensure the implementation of the procedures followed based on the decisions of the Council of Ministers.
- The Ministry is coordinating on a daily basis with the Lebanese missions on the development of the situation in their host countries and the situation of expatriates

Lebanese Red Cross

38686 23 new)	Number of PCR tests transferred to laboratories	0	Number of additional ambulance centers ready to respond	47	ambulance centers	3265 38 new	cases transferred to hospitals
166	Number of volunteers trained to transfer PCR tests	1444	Number of trained paramedics	8461	total number of respondents	60966	number of those benefiting from awareness *sessions
967	The number of university volunteers trained to follow up on prevention measures in companies and institutions	217	Number of university volunteers trained to conduct awareness sessions	550	total LRC volunteers for covid19	8272	number of trained managers for isolation centers
3768 2 new	Number of beneficiaries from educational electronic جرح platforms COVID-19	67718	Number of distributed equipment **	1207656	total distributed posters, brochures, and flyers on covid19 prevention	383	number of prisons that have been disinfected

Ministry of Interior and Municipalities

- issued circular no 76/2020 on 27/7/2020 regarding the amendment of the covid 19 precautionary measures based on decision no 137/2020 that was issued on 27/7/2020
- The Ministry issued Memorandum No. 78 on 29/07/2020 regarding the sectors exempted from closing during the lockdown periods: restaurants are allowed to operate from 6:00 am until 8:00 pm and are only allowed to provide take away and delivery services, while adhering to all safety measures and conditions. The decision also includes libraries, which are allowed to work from 6:00 am until 11:00 pm in compliance with preventive measure

Ministry of Public Works and Transport

- The General Directorate of Civil Aviation at the Ministry of Public Works and Transport issued Circular no. 45/2 on 28/7/2020 to all airplane companies and all arrivals to through the airport regarding new regulations in regards to PCR tests.

DEPARTING FLIGHTS		ARRIVING FLIGHTS	
28	NUMBER OF FLIGHTS	34	NUMBER OF FLIGHTS
3517	NUMBER OF DEPARTING INDIVIDUALS	3035	NUMBER OF ARRIVALS
Port	entered	left	
	Import	Direction	#
Beirut	Containers	Port said	1
	export	Direction	#
	empty	Limassol	1
Sidon	Metal	Cyprus	1
Zahrani	Fuel	Belgium	1
		3	1

General Decisions

- extended the general mobilization decision according to circular 6665/2020 from 3/8/2020 to 30/8/2020

- following up on the Ministry of Tourism's issued statement stating that bakeries, restaurant, and can open Al Adha holiday from from 6:00 AM until 8:00 PM. take aways and deliveries are only allowed.

Examples of lack of adherence to safety measures

- Demonstration, and Roadblocks
- Overcrowding in restaurants and cafes and failure to comply with the permitted number of customers (50%)
- Gathering of citizens in hiking areas without committing to preventive measures
- Non-compliance of citizens with preventive measures
- Gathering in cafes
- hookah
- gatherings on beaches and sidewalks without wearing masks.
- social gatherings and celebrations and kids areas

LET'S STAY COMMITTED SO IT IS REMEMBERED BUT NOT REPEATED...

Physical Distancing

Keep a safe distance

1.5 meters at least

Prevention

- Wear face masks outside the house
- Avoid touching the face
- Cover mouth and nose with elbow when coughing or sneezing

Hygiene

- Wash your hands for at least 20 seconds
- Sterilize your purchased products before use or storing at home

➤ Adhere to all circulars by the Ministry of Public Health

-