



Lebanon National Operations Room

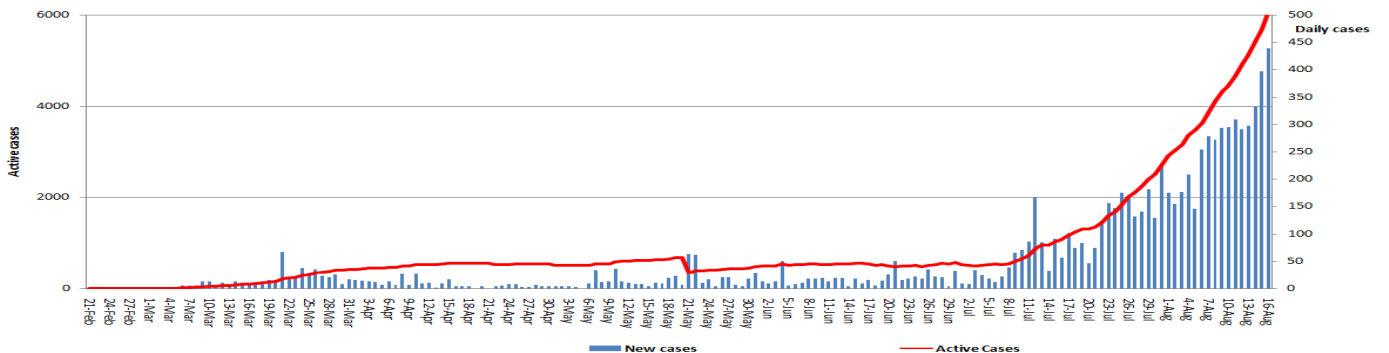
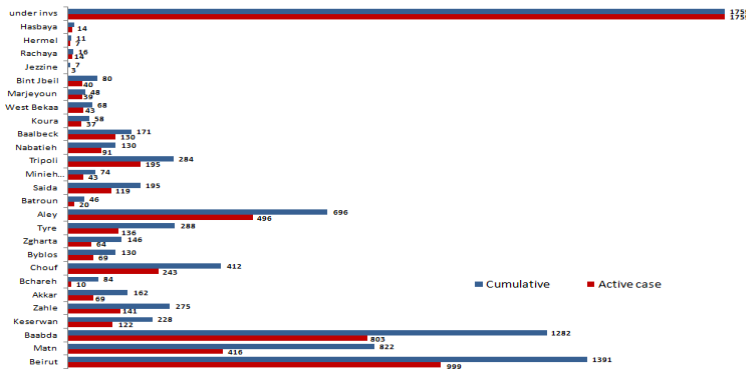
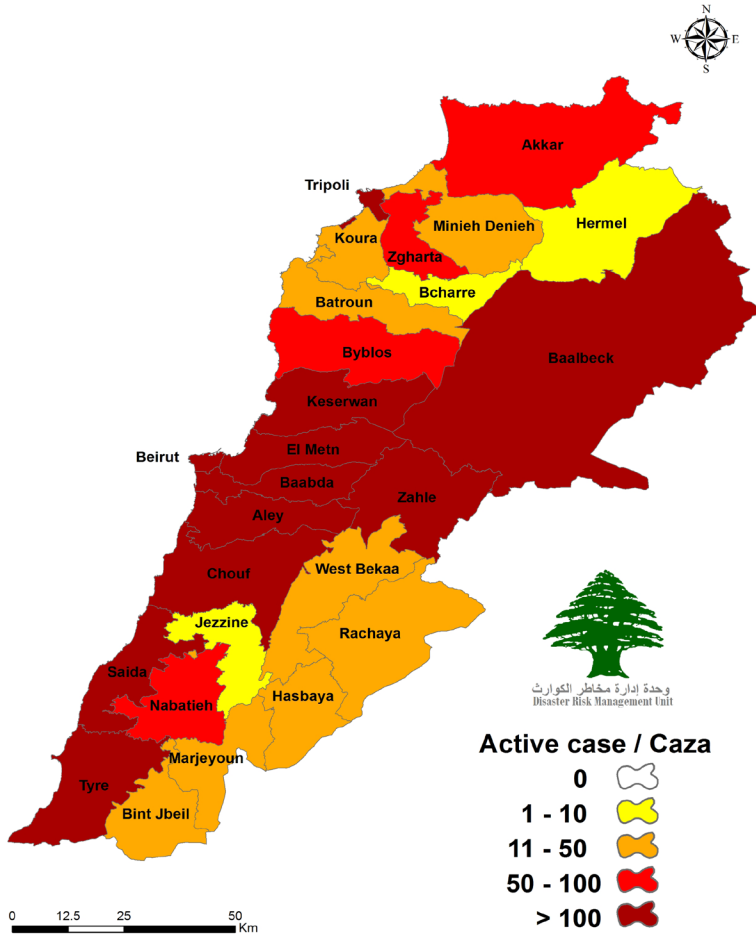
Daily Report on COVID-19

Sunday, August 16, 2020

Report #151

Time published: 22:00

Number of Cases by Location



Total registered cases since Feb. 21	8881
locals	7669
Lebanese expats	1212
Recoveries	2724
Deaths	103
Total registered cases in the past 24 hrs.	439
locals	395
Lebanese expats	44
Conducted PCR tests in labs since Feb. 21	409538
PCR tests conducted for locals in the last 24 hrs. (in labs)	4739
Conducted PCR tests in airports in the past 24 hours	1625
cases registered among medical staff	407
cases registered among medical staff in the past 24 hours	29

6054 active cases
5780 in home isolation
48 mild cases in the past 24 hours
16 in ICU in the past 24 hrs
274 are currently hospitalized
206 mild cases
68 in ICU

Beirut	Number of Cases
Ain Mraisseh	1
Manara	1
Raoucheh	1
Hamra	9
Msaitbeh	2
Tallet Khayat	1
Sanayeh	1
Mazraa	4
Borj Abou Haidar	2
Basta Faouqa	1
Tariq Jdideh	11
Ras Nabaa	1
Achrafyeh	25
Aadlyeh	1
Under investigation	1
Baabda	Number of Cases
Ain Roummaneh Chiyah	3
Baabda	3
Bir Hassan	2
Borj Brajneeh	10
Ghbayreh	5
Hadath	1
Haret Hreik	5
Hazmiyeh	1
Jnah	1
Kfar Chima	4
Ouzaai	2
Tahouitat Ghadir	1
Under investigation	1

Matn	Number of Cases
Antelias	2
Baabdat	2
Borj Hammoud	2
Broummana	3
Dekouaneh	2
Mansouriyeh	4
Naqqach	1
Raouda Baouchriyeh	1
Sinn Fil	2
Zalqa	1
Under investigation	1
Chouf	Number of Cases
Aalmane Dayaa	1
Barja	3
Beqaata	1
Bsaba	1
Dalhoun	2
Daraiya	1
Jadra	1
Jiyeh	3
Naameh	3
Ouadi Zayni	1
Ouardaniyeh	1
Saadiyat	1
Semqaniyeh	1
Under investigation	1

Aleyh	Number of Cases
Aaramoun	4
Bchamoun	6
Blaybel	4
Choueifat Aamroussiyyeh	4
Hay Sellom	2
Khaldeh	3
Under investigation	1
Kesrwan	Number of Cases
Aajaltoun	3
Adonis	1
Jounieh Kaslik	1
Jounieh Sarba	4
Qleiaat	1
Shayleh	1
Zouk Mosbeh	1
Jbeil	Number of Cases
Blat	1
Jbayl	1
Tripoli	Number of Cases
Beddaoui	1
Mina Jardins	8
Trablous Hadid	1
Trablous Tabbaneh	8
Koura	Number of Cases
Under investigation	1

Zgharta	Number of Cases
Aalma	1
Ehden	9
Kfar Sghab	1
Toula Joubbeh	1
Zgharta	2
Under investigation	1
Batroun	Number of Cases
Chikka	7
Under investigation	1
Becharreh	Number of Cases
Bane	1
Bcharreh	1
Minieh Danieh	Number of Cases
Bahsa	1
Deir Aammam	1
Haqlit	1
Minieh	12
Under investigation	1
Akkar	Number of Cases (0)
Aabdeh	1
Aadbil	1
Bebnine	1
Bezrina	1
Borj Aarab	1
Fnaydeq	1
Halba	1
Saadine	2
Tall Aabbas Gharbi	1
Under investigation	1

Zahleh	Number of Cases
Ablah	1
Chtaura	2
Majdel Aanjar	2
Other	1
Qabb Elias	3
Taalabaya	2
Under investigation	3
Beqaa Gharby	Number of Cases
Machghara	3
Under investigation	2
Rashaya	Number of Cases
Aaqabet	1
Ain Aata	2
Mazraat Jebb Farah	1
Under investigation	1
Saida	Number of Cases
Aanqoun	1
Ain Heloueh	1
Hlaliyeh	1
Miyeh Ou Miyeh	3
Sarafand	2
Under investigation	3
Sour	Number of Cases
Borj Chemali	2
Maarakeh	1
Majdel Zoun	5
Mjadel	1
Naqoura	1
Under investigation	3

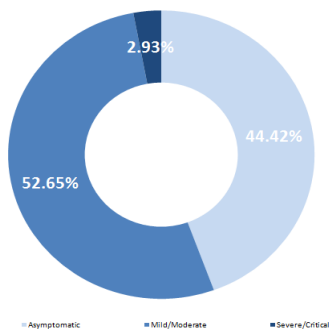
Nabatieh	Number of Cases
Aadchit Chqif	5
Jbaa	1
Nabatiyeh Faouqa	1
Toul	3
Bint Jbeil	Number of Cases
Khribet Selm	3
Hasbaya	Number of Cases
Kfar Chouba	1
Baalbeck	Number of Cases
Aarsal	1
Baalbek	1
Qsarnaba	2
Hermel	Number of Cases
Hermel	1

Comparison between Lebanon and other countries

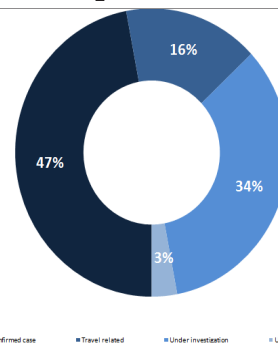
	Lebanon	Internationally
Total registered cases	8881	21,736,260
Total deaths	103	771,089
Percentage of deaths	1.15%	3.54%
Number of recoveries	2724	14,471,063

*the above data was last updated at 10 pm

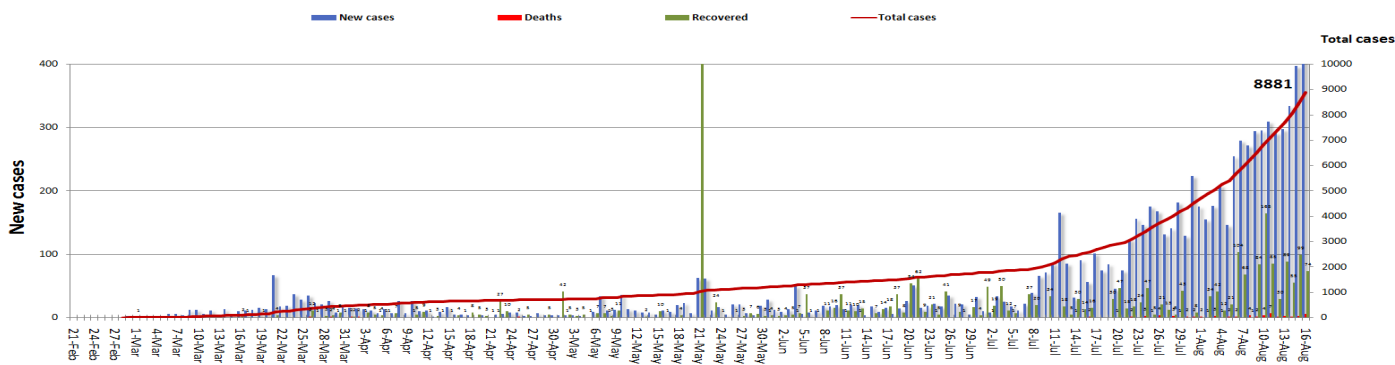
Status of cases



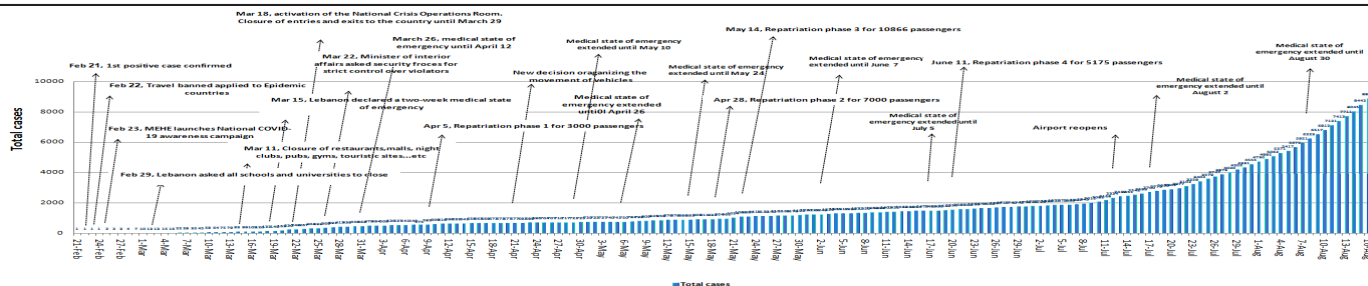
Exposure



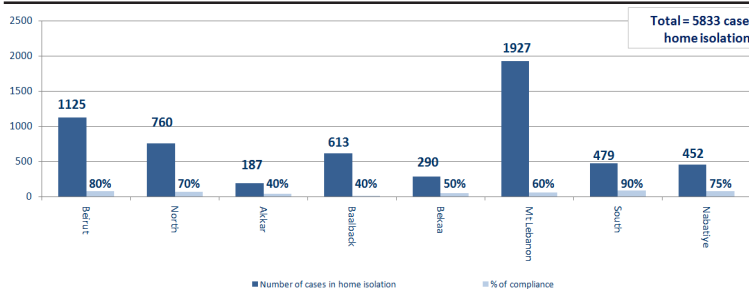
Cases per day



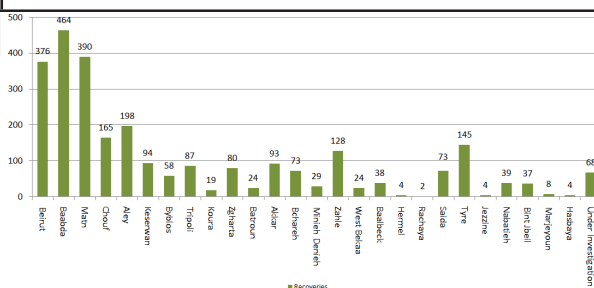
Chronology of decisions according to number of cases



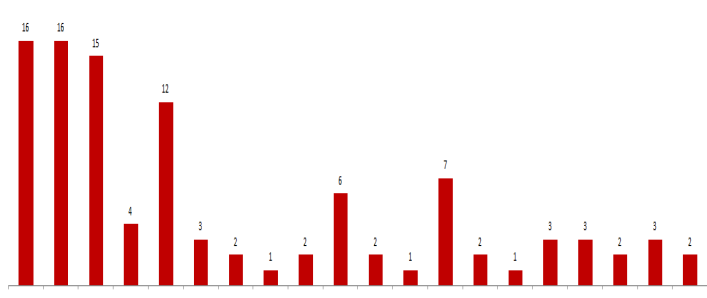
Number of individuals in home isolation and percent of commitment to isolation



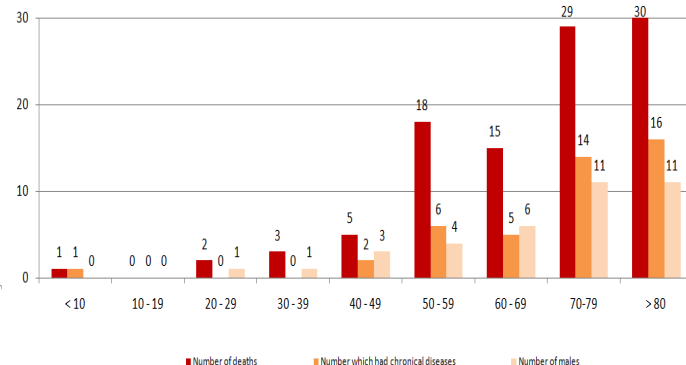
Distribution of recoveries by area



Distribution of deaths by governorates

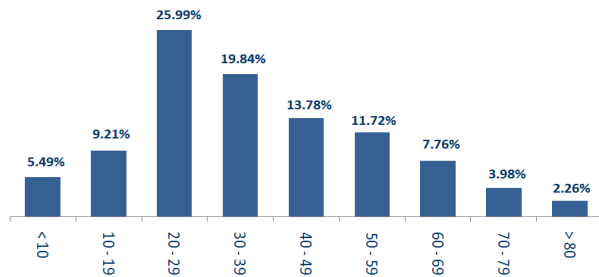


Distribution of deaths by age



Distribution of cases by age group

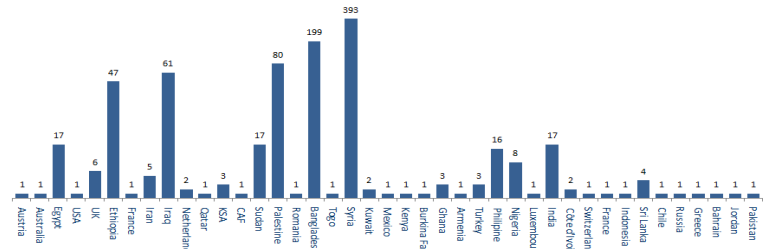
Distribution of cases by age group (%)



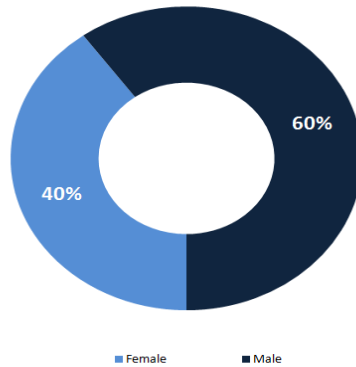
Distribution of cases by nationality

Distribution of cases by nationality

Lebanese : 7974 cases out of 8881 (87 %)



Distribution of cases by gender (%)



Decisions and actions taken

Ministry of Public Health

- The Preventive Medicine Department of the Ministry of Public Health issued a circular about how to act in the event that a positive case of Corona was recorded in terms of identifying and identifying contacts, the time period for conducting PCR tests for contacts, the required quarantine period, with an emphasis that a negative examination does not mean that the contacts are free of disease and that Adopting and adhering to the quarantine is the primary measure to limit the spread of the epidemic
- the ministry is increasing the number of conducted PCR tests in different Lebanese regions to examine the level of the virus' spread in the country.
- The Ministry is discussing with the Lebanese University a mechanism in order to assist the Ministry in conducting PCR examinations for arrivals at the land borders
- following up on providing the needed equipment for public hospitals
- The ministry issued the results of additional checks conducted at the airport for the incoming flights on 12/8/2020 and 13/8/2020, where three positive cases were recorded, and they were distributed as follows

Arriving from	Company	Flight Number	Number of Positive Cases
12/8/2020			
Cairo	MEA	307	1
Istanbul	Turkish Airlines	828	1
13/8/2020			
Damascus	R8	183	1
Total			3

Security services (Internal Security Forces, General Security, State Security, Army, General Directorate of Civil Defense)

- The army carried out patrols in different Lebanese regions, distributed food boxes to families in need (CIMIC) and dispersed gatherings.
- General Security Forces followed up on the airport's set regulations for the return of Lebanese expatriates to their homeland and tracked potential cases in various Lebanese regions and ensured that they're adhering to the terms of home isolation. forces also reported that 49 workers of Bangladeshi nationality have been quarantined in the town of Tula in the south, as they were confirmed to have had mixed positive cases
- State security forces followed up on positive and suspected cases in home isolation. forces also announced the results on tests conducted on suspected cases. forces also announced the measures being taken in municipalities for preventing the spread of the virus. forces also Reported a positive case among the United Nations Interim Forces and the procedures that have been implemented to quarantine the case and examine, as well as quarantine contacts
- ISF will be isolating the following areas for the next week:

Governorate/District	Location
Beirut Governorate	Tariq al Jadidah, Ard jalloul (Pending isolation by order of Governor)
Baabda District	Burj al Barajneh, Hay el Akrad (Handled by Municipality)
Chouf District	Isolation of Barja Village
Aley District	- Chowaifat, Separate Houses Isolation - Aramoun, Separate Houses Isolation
Tryre District	Isolation of Majdel Zun Village
Bnt Jbeil District	Khirket Silm and Jal al-Hayuk neighborhoods were isolated for a period of 3 days, renewable, and those in contact with contacts were quarantined for a period of 14 days under the supervision of the Internal Security Forces

Lebanese Red Cross

41338 (80 New)	Number of PCR tests transferred to laboratories	0	Number of additional ambulance centers ready to respond	47	ambulance centers	3655 (32 New)	cases transferred to hospitals
166	Number of volunteers trained to transfer PCR tests	1444	Number of trained paramedics	8509	total number of respondents	67048 (24 New)	number of those benefiting from awareness sessions
967	The number of university volunteers trained to follow up on prevention measures in companies and institutions	217	Number of university volunteers trained to conduct awareness sessions	550	total LRC volunteers for covid19	8320	number of trained managers for isolation centers
4085 (2 New)	Number of beneficiaries from educational electronic platforms COVID-19	72087 (97 New)	Number of distributed equipment **	1207656	total distributed posters, brochures, and flyers on covid19 prevention	413 (2 New)	number of prisons that have been disinfected

Examples of lack of adherence to safety measures

- Demonstration, and Roadblocks
- Overcrowding in restaurants and cafes
- Non-compliance of citizens with preventive measures
- Gathering in cafes
- gatherings without wearing masks.
- social gatherings and celebrations and kids areas

Ministry of Public Works and Transport

- The General Directorate of Civil Aviation at the Ministry of Public Works and Transport issued Circular no. 45/2 on 28/7/2020 to all airplane companies and all arrivals to through the airport regarding new regulations in regards to PCR tests.

DEPARTING FLIGHTS		ARRIVING FLIGHTS	
44	NUMBER OF FLIGHTS	41	NUMBER OF FLIGHTS
3934	NUMBER OF DEPARTING INDIVIDUALS	2289	NUMBER OF ARRIVALS

Arriving from	Company	Flight Number	Number of Positive Cases
12/8/2020			
Cairo	MEA	307	1
Istanbul	Turkish Airlines	828	1
13/8/2020			
Damascus	R8	183	1
Total			3

Labs for conducting PCR tests

Private Hospitals	Location
AUBMC	Beirut
HDF/Merieux/USJ	Beirut
Saint Georges Hospital	Beirut
Makassed General Hospital	Beirut
LAUMC	Beirut
Wardieh Hospital	Beirut
CHU-NDS	Byblos
Al Mathlum Hospital	Tripoli
Al Mounla Hospital	Tripoli
Haykal Hospital	Koura
Serhal Hospital	Metn
HLG	Beirut
MLH	Baabda
Saint Georges Hospital	Baabda
Ain wZein Hospital	Chouf
Hamoud Hospital	Sidon
Dar el Amal Hospital	Baalbek
Shiekh Ragheb Hareb Hospital	Nabatieh
AL Hadi Laboratory	Baabda
Akiki Laboratory	Byblos
MDC	Tyr
Jabal Amel Hospital	Tyr
Doctor's Center	Beirut
KML	Sidon
SDC	Nabatieh
INOVIE	Baabda
TRANSMEDICAL FOR LIFE	Metn
MCC	Zahle
CHN	Zgharta
Clinigen Laboratory	Hazmieh
Centre Medical Moderne	Ghbayre
ADC *American Diagnostic Center	Beirut
Khoury Hospital	Zahle
Sacre Coeur	Hazmieh
Bellevue	Mansourieh
LMSE	Tripoli
Al Rasoul Al Aazam Hospital	Beirut
Nabni Hospital	Tripoli

Public Hospitals	Location
RHUH	Beirut
Tripoli governmental hospital	Tripoli
Ftough Kiserwan governmental hospital	Kiserwan
Baalbek governmental hospital	Baalbek
President Elias Hrawi governmental hospital	Zahle
Tebnin governmental hospital	Tebnin
Bnt Jbeil governmental hospital	Bnt Jbeil
Batroun governmental hospital	Batroun
Halba governmental hospital	Halba
Drive Through	Location
Medical Diagnostic Treatment Center	Hamra