



Lebanon National Operations Room

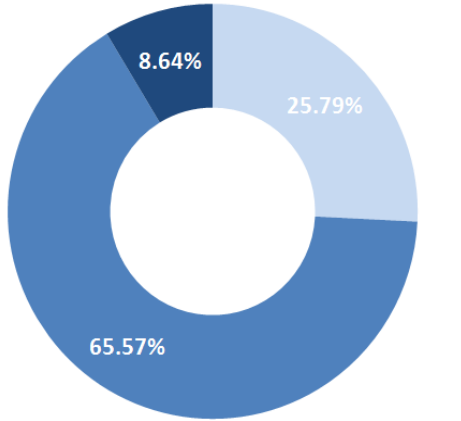
Daily Report on COVID-19

Monday, May 4, 2020

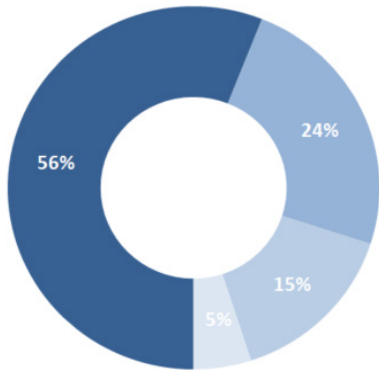
Report #47

Time published: 17:00

Status of Cases



Asymptomatic Mild/Moderate Severe/Critical



Contact with confirmed case Travel related
Under investigation Unidentified source

Registered cases since Feb. 21

740

Recoveries

205

Deaths

25

Current registered cases

512

New cases
TOTAL=3

3 expatriates
0 locals

Conducted PCR tests since Feb. 21

35,026

PCR tests conducted in the last 24 hrs.

520

PCR tests conducted in the airport since
April 5

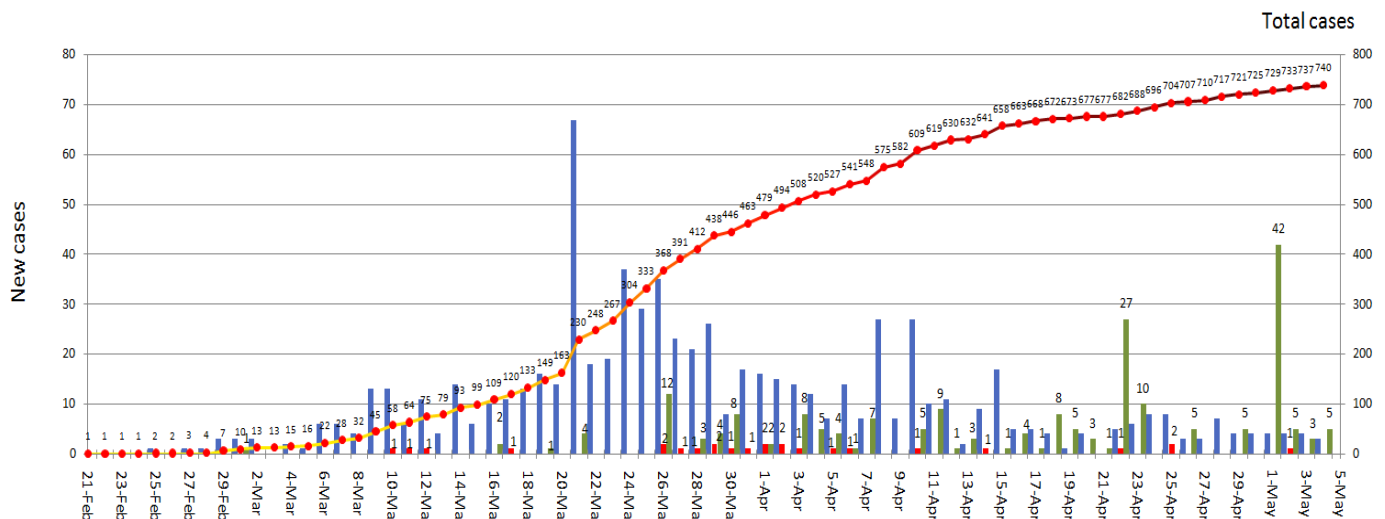
5,352

PCR tests conducted in the airport in the
last 24 hrs.

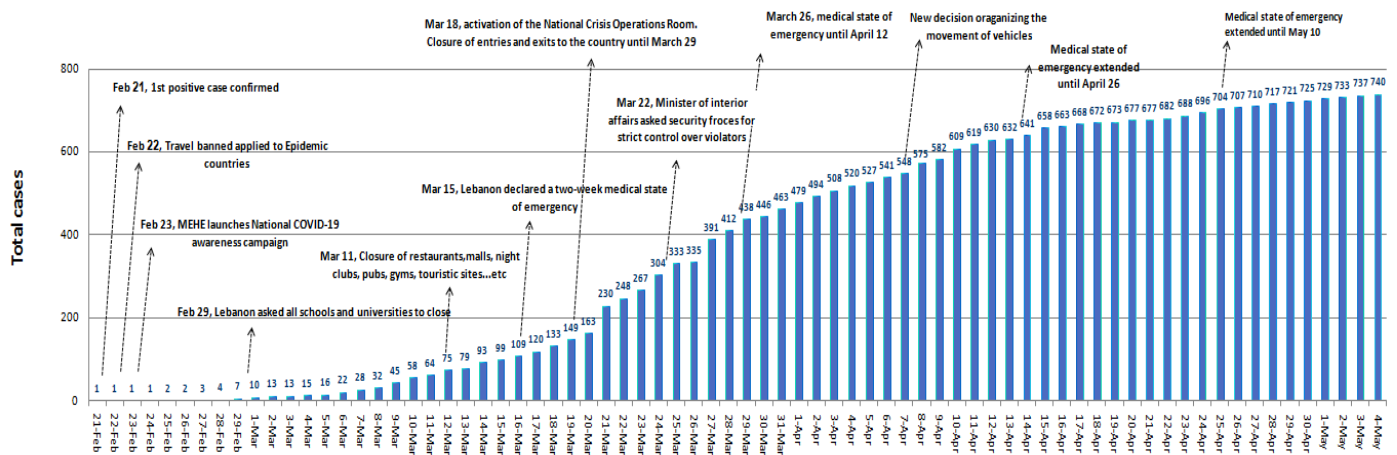
628

Cases per Day

New cases Deaths Recovered Total cases

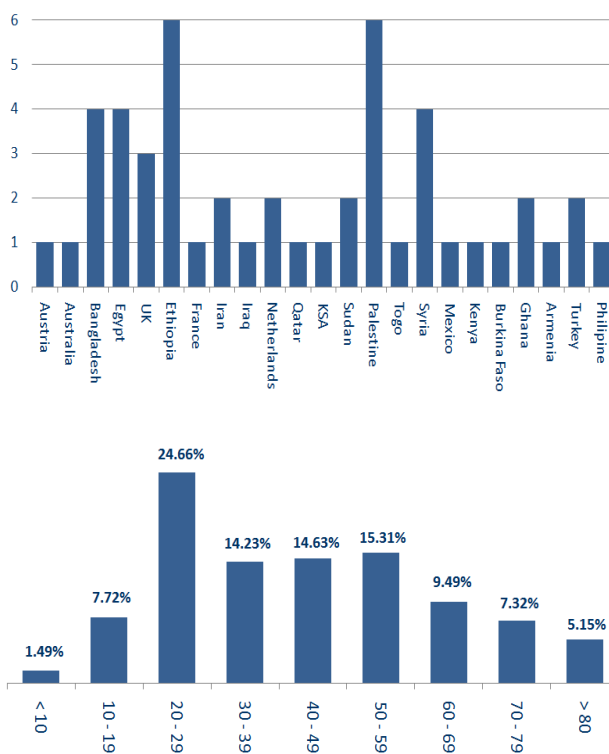


Chronology of decisions according to number of cases

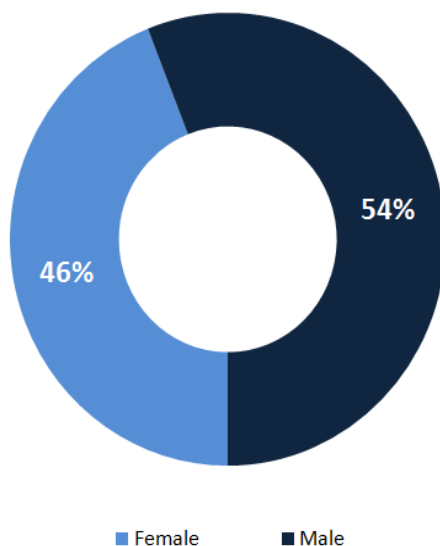


Distribution of cases by nationality

Lebanese: 691 cases out of 740 (94%)

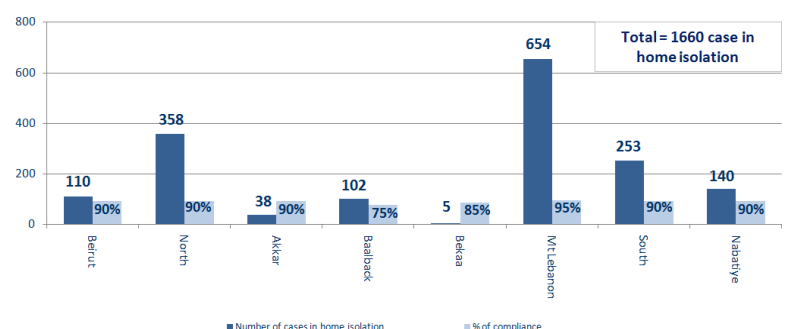


Distribution of cases by gender (%)

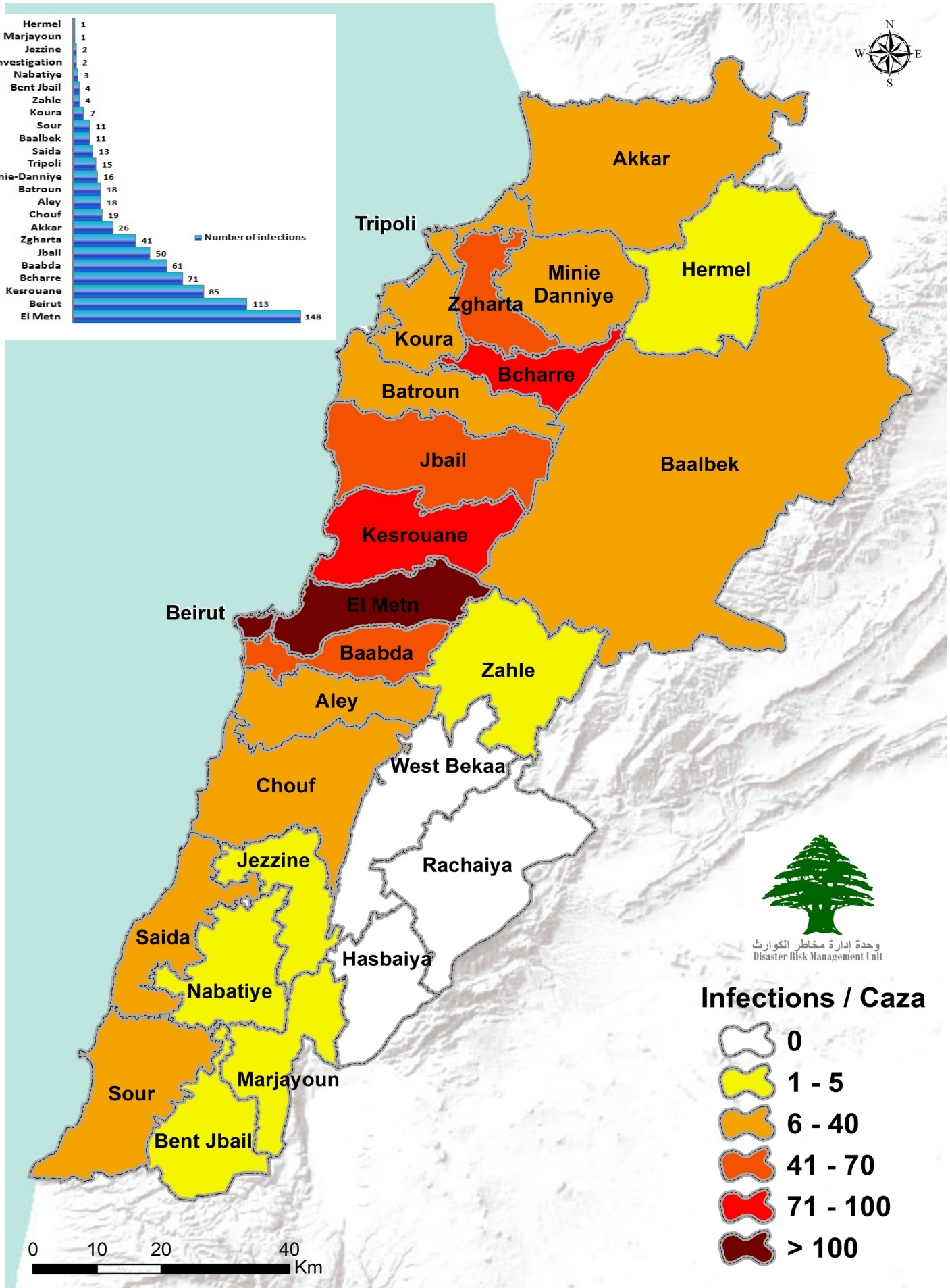
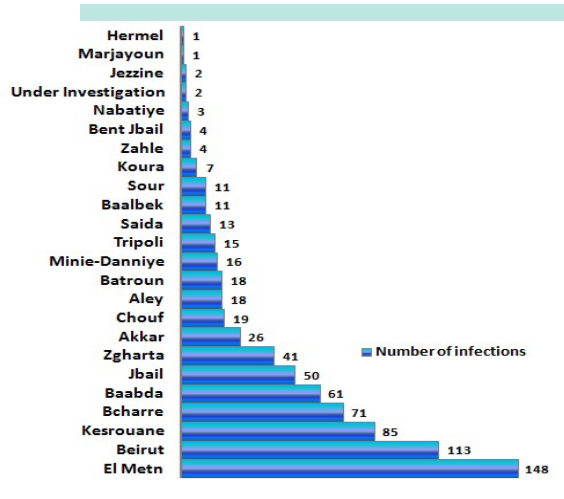


Location	Laboratories designated by MoPH to undertake testing
Beirut	Rafic Hariri University Hospital
Beirut	AUBMC
Beirut	HDF /Merieux / USJ
Beirut	Saint Georges Roum
Kesrouane	Bouar Governmental Hospital
Beirut	Rizk LAU
Byblos	Notre Dames de Secours
Baalbek	Baalbek Governmental Hospital
Tripoli	New Mazloun Hospital
Koura	Haykel Hospital
Metn	Hopital Dr. S. Serhal
Metn	Hospital of Bhannes
Beirut	Lebanese Hospital Geitaoui
Baabda	Mount Lebanon Hospital
Baabda	Saint George Hospital
Chouf	Ain Wazain Hospital
Sidon	Hammoud Hospital
Baalbek	Dar El Amar Hospital
Nabatieh	Al Shiekh Ragheb Hareb
Baabda	Al Hadi laboratories
byblos	Akiki Laboratories
Tyre	Al Mashrek
Beirut	Doctor's center
Sidon	Al Karim Labs
Nabatieh	SDC labs
Baabda	Inovie labs
Metn	TransMedical labs
Zahle	MCC Labs
Zahle	Elias Al Hrawi Hospital

Number of individuals in home isolation and percentage of commitment to isolation



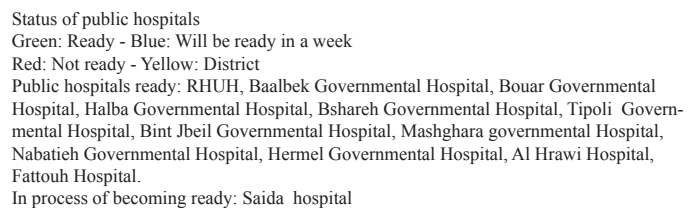
Number of Cases by Location



Level of Preparedness of Public and Private Hospitals



Green: Ready
Yellow: District



Actions Taken at the Governorate and Municipal Level

Isolation centers approved by The Committee for the Follow up on Coronavirus Preventive Measures and Procedures

Thursday, April 30, 2020

The committee responsible for specifying potential isolation centers includes an officer from the General Secretariat of the Supreme Council of Defense, a medical doctor in the army, an engineer from the army, and a representative from the Order of Nurses in Lebanon.

The committee aims to inspect possible isolation centers in coordination with the concerned governorates and municipalities.

The National Committee recommended that governors and municipalities should monitor the implementation and operation of refugees' isolation centers that were approved in coordination with the Ministry of Public Health, the Ministry of Social Affairs, the Ministry of Interior and Municipalities, the United Nations High Commissioner for Refugees (UNHCR) and the United Nations Relief and Works Agency for Palestine Refugees (UNRWA) and through following the reference manual for the management of isolation centers that have been circulated by the Ministry of Interior and Municipalities.

Governorate	Number of isolation centers	Number of isolation centers for refugees
Mount Lebanon	17	1
North	2	
South	4	2
Akkar	11	2
Bekaa	10	4
Beirut		1
Total	44	10

Governorate	Level of commitment to the decision to close all businesses	Sectors violating closure decision
Beirut	75%	Commercial stores, private businesses, gatherings, protests
North	65%	Protests, gatherings, traffic, commercial stores, private businesses, gatherings in front of banks and ATM machines
Akkar	65%	Violating the car mobility decision, gatherings in front of banks and ATM machines, gatherings in front of markets and vegetable markets, traffic.
Baalbek-Hermel	75%	Cafes, violating the car mobility decision, gatherings in front of banks and ATM machines, gatherings in front of supermarkets, commercial stores, private businesses, traffic
Bekaa	85%	violating the car mobility decision, private businesses, commercial stores
Mount Lebanon	75%	Traffic, gatherings and protests, commercial stores, violating the car mobility decision, private businesses
South	85%	Gatherings, protests, violating the car mobility decision, traffic, gatherings
Nabatieh	85%	Protests, gatherings in front of banks and ATM machines, gatherings in stores, violating the car mobility decision

Ministry of Public Health

- Issued a daily report on new cases and the status of existing cases in government and private hospitals.
- Implemented the health measures agreed upon within the Lebanese government's plan to return Lebanese expatriates during flights and at the airport, and defined the required isolation procedures according to the health status of expatriates in coordination with the Committee for the Follow up on Coronavirus Preventive Measures and Procedures, the Ministry of Foreign Affairs, the Ministry of Public Works and Transport, the General Directorate of Public Security and Middle East Airlines.
- Continues to equip government hospitals and others.
- Field examination of the hospitals and laboratories designated by the ministry to deal with the emerging coronavirus.
- Following up on the health situation of expatriates who have returned to Lebanon.
- Conducting and following up on conducted PCR tests for citizens in various Lebanese regions.
- The Ministry of Public Health has started increasing the number of PCR examinations and distributing medical supplies to government hospitals as part of its plan that focuses on random sampling every day in various Lebanese regions, which will allow to define the epidemic stage and take appropriate decisions.
- Received medical assistance from other countries to increase the capacity of hospitals and medical personnel.

- 36 trained ambulance centers
- 11 additional ambulance centers ready to respond when needed
- 7,883 PCR tests transported to laboratories (237 new tests)
- 138 volunteers responsible for transporting PCR tests to laboratories
- 53,827 number of those benefiting from awareness sessions

Ministry of Foreign Affairs

- The ministry was informed that several expatriated donated money to governmental hospitals and the medical staff.
- The Ministry is following up with the Lebanese missions and consulates to organize the nominal regulations for expatriate students with limited financial capabilities who will be provided with financial assistance.
- The Ministry is coordinating with banks and BDL to transfer money for students abroad
- following up with foreign missions on the departure of their citizens from Lebanon
- The ministry is following up on the needed precautions that should be followed by Lebanese expats before traveling to Lebanon from 28/4/2020 to 8/5/2020
- Note:
- The link for the Lebanese who wish to return to Lebanon: <https://mfa.gov.lb/arabic/return-to-lebanon>
- The link for expatriate students: <https://mfa.gov.lb/arabic/students-abroad>

Lebanese Red Cross

- 975 new suspected cases were transferred to hospitals (12 new cases)
- 1,282 trained paramedics

Security services (Internal Security Forces, General Security, State Security, Army, General Directorate of Civil Defense)

- The Lebanese army and other security services implemented strict measures on all Lebanese territory to ensure public mobilization.
- The army closed 17 shops, dispersed 7 public gatherings. The army also supported a number of municipalities in implementing precautionary measures. The army also shared the names of the 119 blocked roads by the municipalities. Also, the army distributed food units to families in need.
- General Security Forces followed up on the airport's set regulations for the return of Lebanese expatriates to their homeland and tracked potential cases in various Lebanese regions and ensured that they're adhering to the terms of home isolation. In addition, they dispersed several gatherings and aided several municipalities in issuing several written warnings to institutions and individuals that did not adhere to the decisions of the Council of Ministers.
- ISF issued 137 fines, 135 were directed at individuals and 2 were directed at institutions that violated the public mobilization decision. since March 8, ISF has issued 21,087.
- The General Directorate of Civil Defense carried out 1 transportation mission for dialysis patients to hospitals based on the Minister of Interior and Municipalities Decision No. 479/2020. It also prepared 427 personnel and 67 ambulances, to interfere, when necessary, and transport those infected with the emerging coronavirus. The directorate also carried out sterilization missions in public and private areas that were excluded from the decision to close.
- State Security Forces visited different Lebanese regions and closed a number of shops. The forces also issues a number of warnings and followed up on cases in home isolations.

Ministry of Interior and Municipalities

- Implementing the extension of the general mobilization procedures issued by the Council of Ministers in accordance with Resolution No. 24/4/2020 from 4/27/2020 to 10/5/2020, provided that this accompanies the approval of a five-stage plan to open sectors in a manner that takes into account potential risks.
- The Ministry issued a circular No. 45/ 2020 on 19/4/2020 regarding the amendment of circular No. 40/2020 related to the operating times of exempted institutions according to Cabinet decisions No. 53/2020 that was released on 3/24/2020 and circular No. 54/2020 released on 3/26/2020. the circular focused specifically on supermarkets and mini markets, dairy and cheese shops, vegetables and fruit markets, meat, fish and poultry stores, sweets and pastry shops, water providers, and restaurants. Their new operating hours are 5 am to 8 pm.
- The Ministry issued the instructions for the electronic joint platform for municipalities (IMPACT) for evaluation, coordination and follow-up in order to facilitate the follow-up of health, social and security issues resulting from the coronavirus outbreak. The project is a partnership between the ministries of the Interior and Municipalities, Public Health, and Social Affairs and with the National Operations Room

<https://cp.interior.gov.lb>

- Issued circular No. 6476 on 4/5/2020 specifying the need of sharing the name of the responsible municipality or the Union of Municipalities without mentioning any member's name when sharing food vouchers and food boxes.

Ministry of Social Affairs

- The Ministry of Social Affairs, in cooperation with the Ministry of Interior and Municipalities, is completing the implementation of the first phase of the social emergency plan approved by the Lebanese government to help the poorest families in Lebanon. The army has finished distributing aid to families of public school students and those affected by mines. additionally, the distribution of aid to drivers of public cars will end in the next 48 hours. As for the poorest families, aid will be distributed to them starting Tuesday May 5.
- The Ministry of Affairs continuously checks all social services centers, care centers and health centers to ensure continuity in the provision of services to citizens, and to ensure that those in charge of the centers and their workers adhere to all safety standards and preventive measures required to counter the spread of the virus.

Ministry of Education and Higher Education

- The Director General of Education, Head of the Examining Committee, issued a memorandum regarding the extension of the deadline for accepting candidacy for the official exams for the year 2020 for high schools and public and private schools to 30/6/2020.

Ministry of Agriculture

- The Ministry of Agriculture is working to secure food by organizing the export of some agricultural and animal products in order to ensure that the Lebanese consumer is the first beneficiary of the product before it is exported.
- The Ministry of Agriculture issued the annual mechanized marine fishing license card to organize the process of monitoring of marine fishers.
- The Ministry of Agriculture has prepared a mechanism to distribute some agricultural materials and pesticides to farmers.

Ministry of Public Works

Port	entered			left		
	Import	Direction	#	export	Direction	#
Beirut	Wheat	Ukraine	1			
Tripoli	Livestock	Malaysia	1			
Zouk	Wheat	Ukraine	1			
Total			3			

Flight	Arrives from	Lebanese citizens on board	Arrival time
MEA	Turkey	2	18:30
SKYLOUNGE	France	2	15:00
MEA	Cameroon	10	23:59
MEA	France	1	17:00
Private plane	Tehran	90	15:00
ME276	Yerevan	77	14:30
ME425	Riyadh	121	16:30
ME286	Kiev	120	18:30
ME244	Warsaw	77	20:30
TOTAL		500	9
Departing planes	departing to	total individuals departing	time
private plane	Tehran	90	16:30
Cargo planes	arrives from	carrying	time
DHL	Bahrain	goods	16:30
TOTAL			1

Notes:

- The airport: All arrivals through Rafic Hariri International Airport are subject to health and security measures approved in the plan for the return of Lebanese expatriates by the Ministry of Public Health, the General Directorate of General Security and the General Directorate of Civil Aviation.
- Ports: Before allowing any vessel to enter the campus's harbor, the entire crew of the vessel is examined by a device approved by the Ministry of Public Health to ensure that there are no infections.

Objectives of the National Operations Room

The National Operations Room works on coordinating efforts in order to accomplish the following goals:

- First Objective: Control the spread of the virus through the application of precautionary measures, minimize direct contact among people, and increase awareness of the population and access to information.
- Second Objective: Ensure the continuity of services at the national level and adopt and encourage remote working.
- Third Objective: Increase health sector capacity by continuously assessing available resources, gaps and look for funding and technical assistance to build up capacities and case management.

General Directions and Recommendations

- Implement the decisions issued by the Presidency of the Council of Ministers at the level of public and private institutions and municipalities.
- Stay at home and don't go out unless it is necessary.
- Frequently wash hands and follow all safety measures set by the Ministry of Public Health.
- Avoid crowded places and social contact and commit to a safe distance between individuals.
- Seek medical care if you feel fever, cough and difficulty of breathes. Call the Ministry of Public Health hotline 1214 or 01-594459

Risks that Might Result in the Rapid Spread of the Virus

- Lack of adherence to the medical advisories.
- Disrespecting to compulsory home quarantine.
- The spread of the virus in crowded places.
- Allowing gatherings to take place