



Lebanon National Operations Room

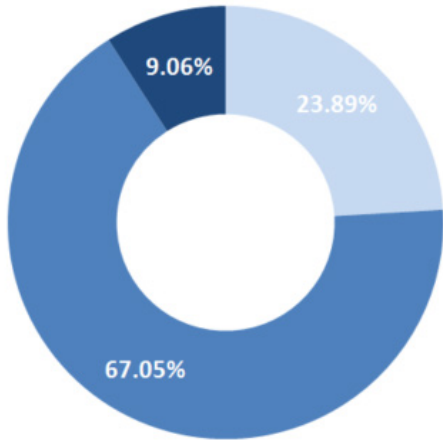
Daily Report on COVID-19

Monday, April 27, 2020

Report #40

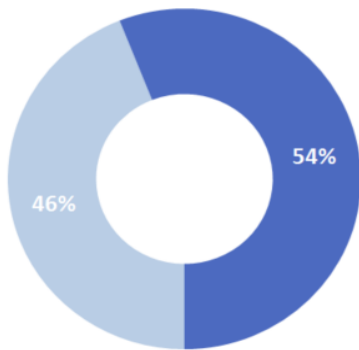
Time published: 17:00

Status of Cases



■ Asymptomatic ■ Mild/Moderate ■ Severe/Critical

Distribution of cases by gender (%)

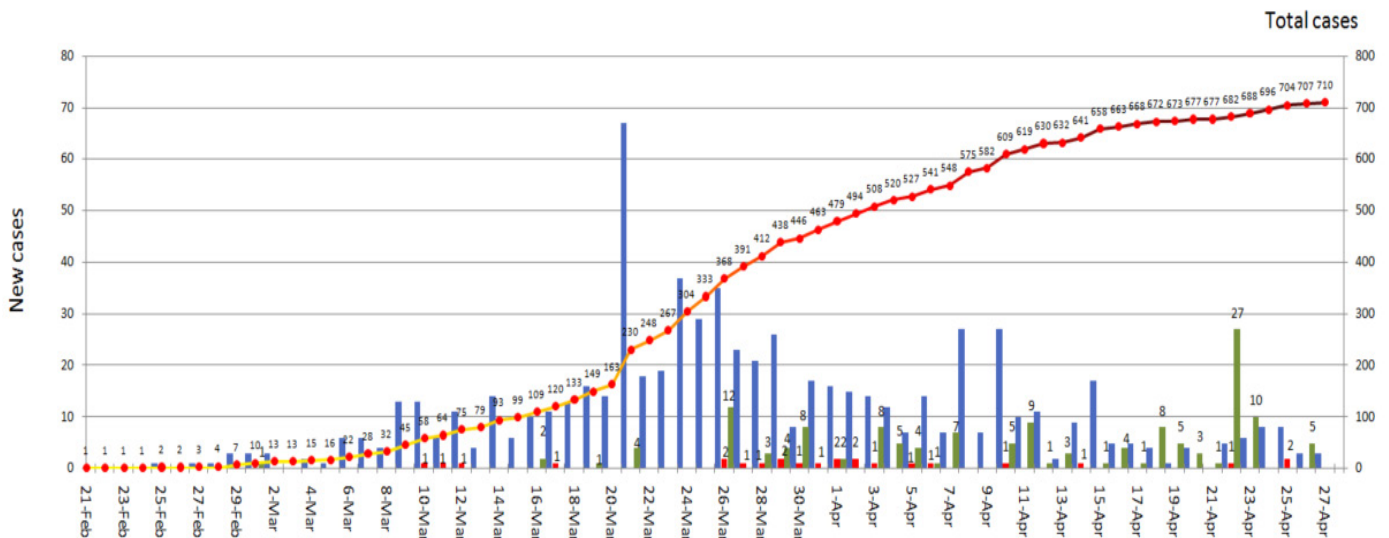


■ Female ■ Male

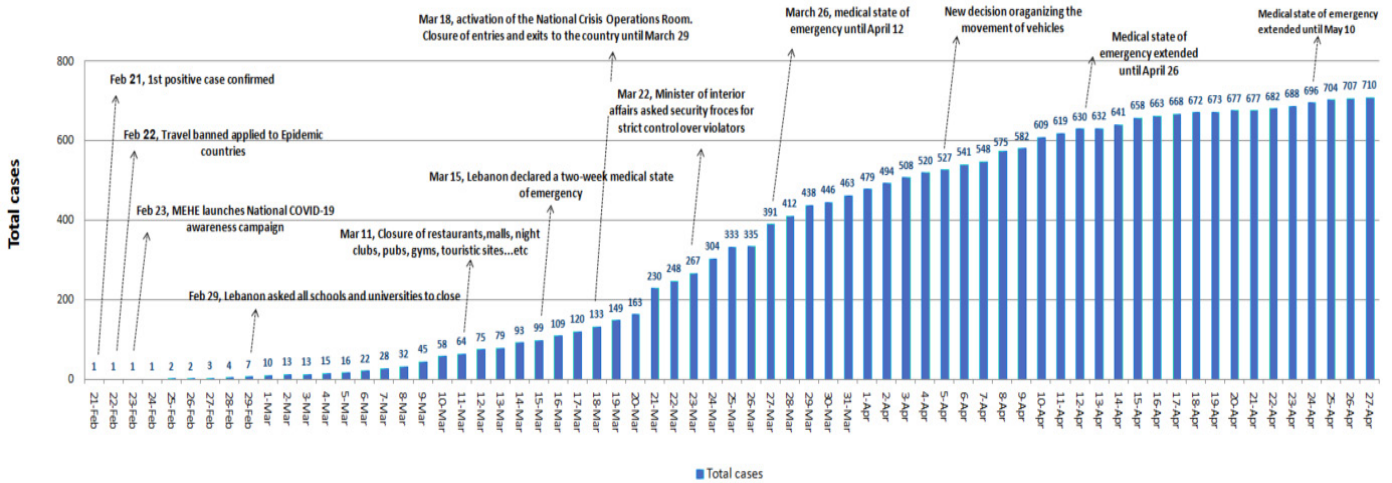
Registered cases since Feb. 21	710
Recoveries	145
Deaths	24
Current registered cases	541
New cases TOTAL=3	0 expatriates 3 locals
Conducted PCR tests since Feb. 21	26,858
PCR tests conducted in the last 24 hrs.	1,540
PCR tests conducted in the airport since April 5	2,501
PCR tests conducted in the airport in the last 24 hrs.	0

Cases per Day

■ New cases ■ Deaths ■ Recovered ■ Total cases

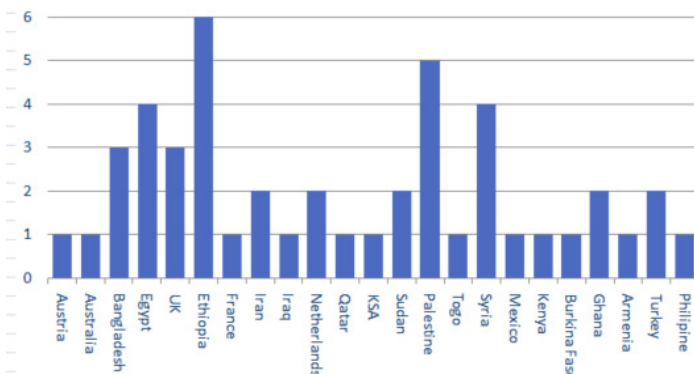


Chronology of decisions according to number of cases

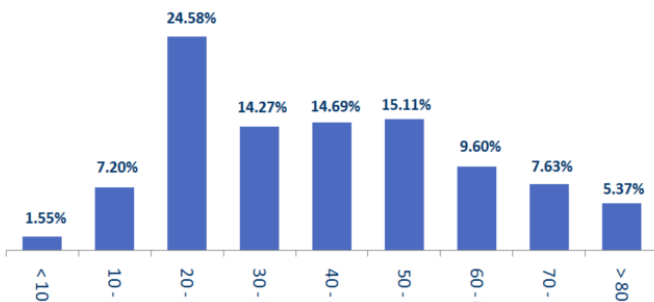


Distribution of cases by nationality

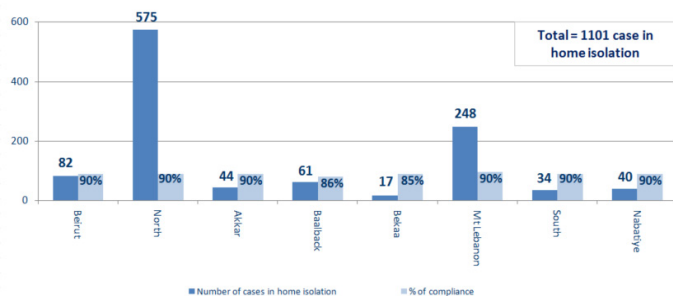
Lebanese: 663 cases out of 710 (93%)



Distribution of cases by age group (%)

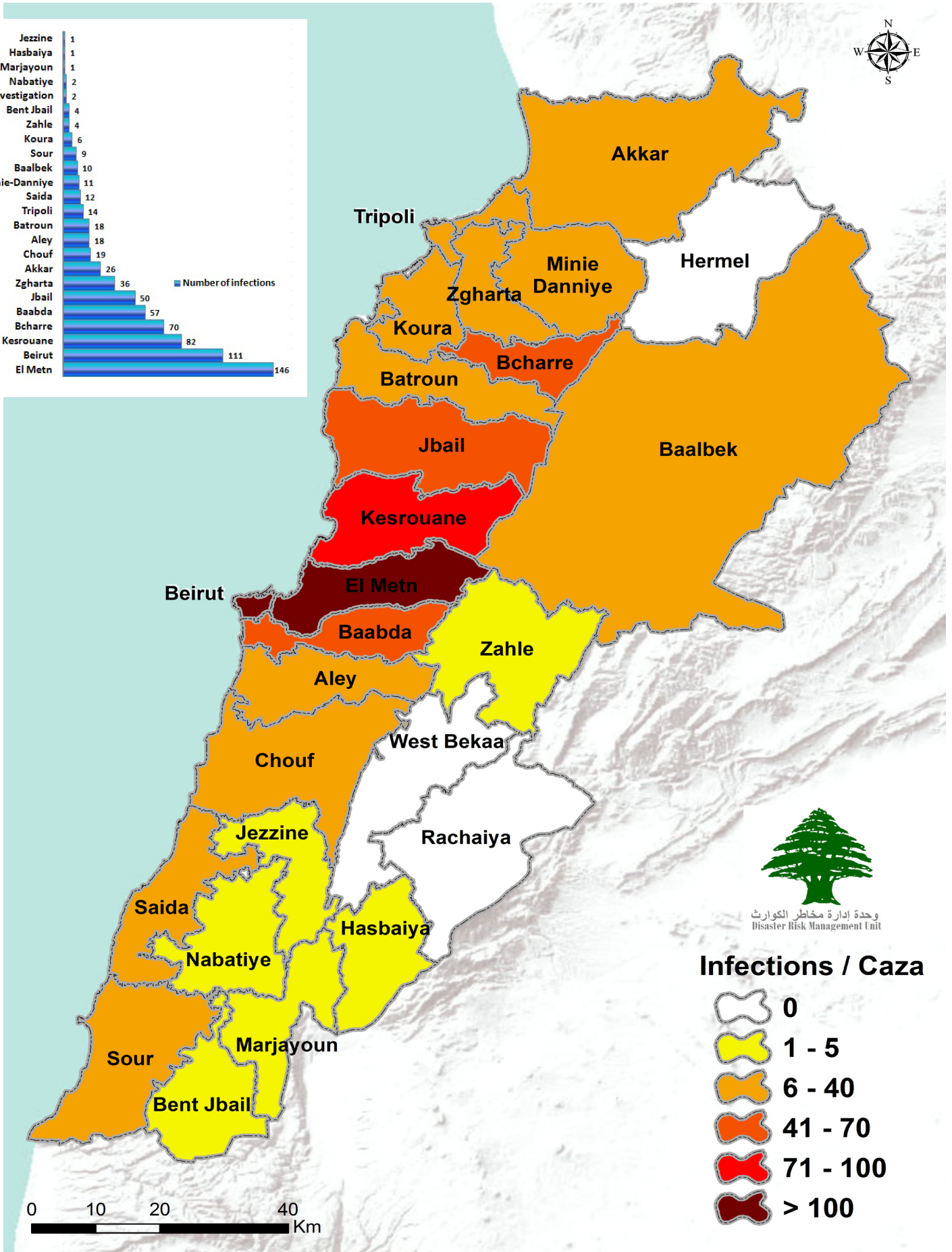
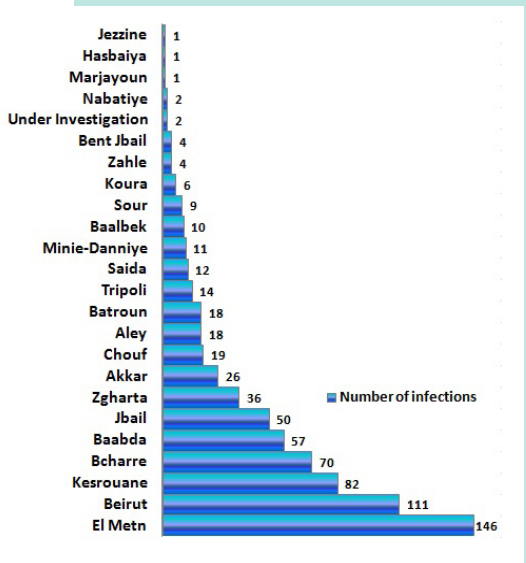


Number of individuals in home isolation and percentage of commitment to isolation



Location	Laboratories designated by MoPH to undertake testing
Beirut	Rafic Hariri University Hospital
Beirut	AUBMC
Beirut	HDF /Merieux / USJ
Beirut	Saint Georges Roun
Kesrouane	Bouar Governmental Hospital
Beirut	Rizk LAU
Byblos	Notre Dames de Secours
Baalbek	Baalbek Governmental Hospital
Tripoli	New Mazloum Hospital
Koura	Haykel Hospital
Metn	Hopital Dr. S. Serhal
Metn	Hospital of Bhannes
Beirut	Lebanese Hospital Geitaoui
Baabda	Mount Lebanon Hospital
Baabda	Saint George Hospital
Chouf	Ain Wazain Hospital
Sidon	Hammoud Hospital
Zahle	Elias Al Hrawi Hospital

Number of Cases by Location



وحدة إدارة مخاطر الكوارث
Disaster Risk Management Unit

Infections / Caza

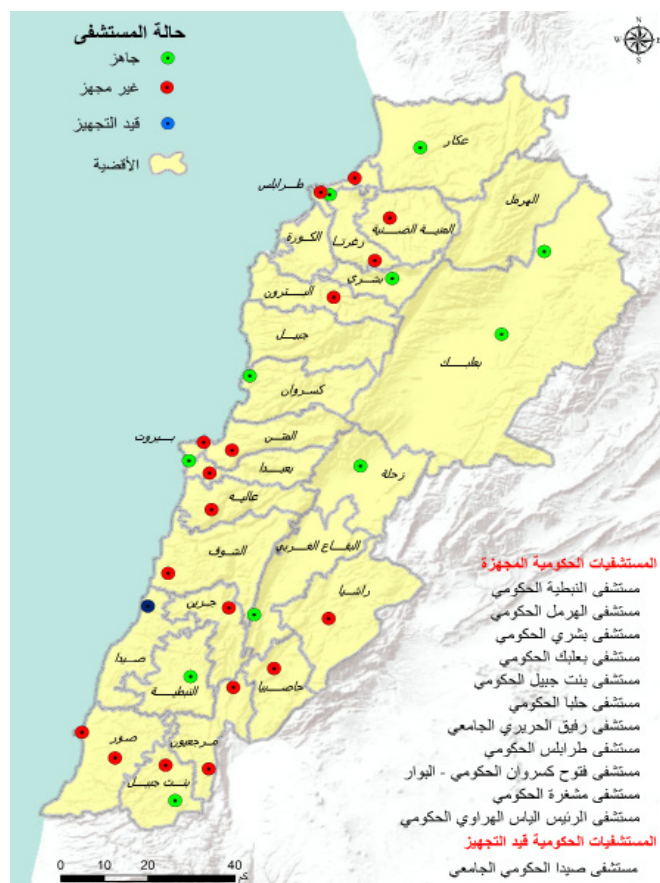


Level of Preparedness of Public and Private Hospitals



Status of private hospitals: AUBMC, Hotel Dieu Hospital, Jbeil Maounat Hospital, Al Roum Hospital

Green: Ready
 Yellow: District



Status of public hospitals
 Green: Ready - Blue: Will be ready in a week
 Red: Not ready - Yellow: District
 Public hospitals ready: RHUH, Baalbek Governmental Hospital, Bouar Governmental Hospital, Halba Governmental Hospital, Bshareh Governmental Hospital, Tipoli Governmental Hospital, Bint Jbeil Governmental Hospital, Mashghara governmental Hospital, Nabatieh Governmental Hospital, Hermel Governmental Hospital, Al Hrawi Hospital, Fattouh Hospital.
 In process of becoming ready: Saida hospital

Actions Taken at the Governorate and Municipal Level

Isolation centers approved by The Committee for the Follow up on Coronavirus Preventive Measures and Procedures Friday, April 10, 2020

The committee responsible for specifying potential isolation centers includes an officer from the General Secretariat of the Supreme Council of Defense, a medical doctor in the army, an engineer from the army, and a representative from the Order of Nurses in Lebanon.

The committee aims to inspect possible isolation centers in coordination with the concerned governorates and municipalities.

Governorate	Number of isolation centers
Mount Lebanon	16
North	2
South	4
Akkar	11
Bekaa	10
Total	43

Governorate	Level of commitment to the decision to close all businesses	Sectors violating closure decision
Beirut	80%	Commercial stores, violating the car mobility decision, private businesses
North	70%	commercial stores, protests, violating the car mobility decision
Akkar	75%	commercial stores, violating the car mobility decision, gatherings in front of super markets
Baalbek-Hermel	79%	Cafes, Commercial stores, violating the car mobility decision, private businesses, gatherings in banks and in supermarkets
Bekaa	80%	Commercial stores, violating the car mobility decision, traffic
Mount Lebanon	75%	Commercial stores, violating the car mobility decision, private businesses, road blockages
South	85%	violating the car mobility decision, gatherings in super markets, protests, private businesses
Nabatieh	85%	Gatherings in front of banks, violating the car mobility decision. Private businesses, commercial stores

Ministry of Public Health

- Issued a daily report on new cases and the status of existing cases in government and private hospitals.
- Implemented the health measures agreed upon within the Lebanese government's plan to return Lebanese expatriates during flights and at the airport, and defined the required isolation procedures according to the health status of expatriates in coordination with the Committee for the Follow up on Coronavirus Preventive Measures and Procedures, the Ministry of Foreign Affairs, the Ministry of Public Works and Transport, the General Directorate of Public Security and Middle East Airlines.
- Continues to equip government hospitals and others.
- Field examination of the hospitals and laboratories designated by the ministry to deal with the emerging coronavirus.
- Following up on the health situation of expatriates who have returned to Lebanon.
- Conducting and following up on conducted PCR tests for citizens in various Lebanese regions.
- The Ministry of Public Health has started increasing the number of PCR examinations and distributing medical supplies to government hospitals as part of its plan that focuses on random sampling every day in various Lebanese regions, which will allow to define the epidemic stage and take appropriate decisions.
- Received medical assistance from other countries to increase the capacity of hospitals and medical personnel.

Lebanese Red Cross

- 889 new suspected cases were transferred to hospitals (20 new cases)
- 1,244 trained paramedics

- 36 trained ambulance centers
- 11 additional ambulance centers ready to respond when needed
- 6,630 PCR tests transported to laboratories (43 new tests)
- 139 volunteers responsible for transporting PCR tests to laboratories
- 53,420 number of those benefiting from awareness sessions

Ministry of Foreign Affairs

- The ministry was informed that several expatriated donated money to governmental hospitals and the medical staff.
- The Ministry is following up with the Lebanese missions and consulates to organize the nominal regulations for expatriate students with limited financial capabilities who will be provided with financial assistance.
- Based on the decision of the Ministerial Committee for the Return of Expatriates, the Ministry of Foreign Affairs, and in coordination with the ministries and other relevant authorities, the ministry will follow up to determine the countries that will be included in the second stage of the plan to return Lebanese Expats after April 26, 2020 and prepare the regulation.
- Note:

Website for Lebanese expatriates who wish to return to Lebanon: <https://mfa.gov.lb/arabic/return-to-lebanon>

Website for student expatriates: <https://mfa.gov.lb/arabic/students-abroad>

Security services (Internal Security Forces, General Security, State Security, Army, General Directorate of Civil Defense)

- The Lebanese army and other security services implemented strict measures on all Lebanese territory to ensure public mobilization.
- The army closed 64 shops, dispersed 41 public gatherings.

The army also supported a number of municipalities in implementing precautionary measures. The army also shared the names of the 136 blocked roads by the municipalities. Also, the army distributed food units to families in need.

- General Security Forces followed up on the airport's set regulations for the return of Lebanese expatriates to their homeland and tracked potential cases in various Lebanese regions and ensured that they're adhering to the terms of home isolation. In addition, they dispersed several gatherings and aided several municipalities in issuing several written warnings to institutions and individuals that did not adhere to the decisions of the Council of Ministers. Forces also informed responsible parties of the PCR tests that are randomly being conducted in different areas in Lebanon by MoPH and that the Minister of Public Health visited a Palestinian refugee camp.
- ISF issued 150 written warnings, 19 warnings were directed at institutions and 131 were directed at individuals who violated the decisions of the Council of Ministers. The forces have issued 19,932 written warnings since March 8.
- The General Directorate of Civil Defense carried out 1 transportation mission for dialysis patients to hospitals based on the Minister of Interior and Municipalities Decision No. 479/2020. It also prepared 427 personnel and 67 ambulances, to interfere, when necessary, and transport those infected with the emerging coronavirus. It also trained 300 members to transport infected individuals. The directorate also carried out sterilization missions in public and private areas that were excluded from the decision to close.
- State Security Forces visited different Lebanese regions and closed a number of shops. They followed up on cases in home isolations.

Ministry of Interior and Municipalities

- Implementing the extension of the general mobilization procedures issued by the Council of Ministers in accordance with Resolution No. 24/4/2020 from 4/27/2020 to 10/5/2020, provided that this accompanies the approval of a five-stage plan to open sectors in a manner that takes into account potential risks.
- The Ministry issued a circular No. 45/ 2020 on 19/4/2020 regarding the amendment of circular No. 40/2020 related to the operating times of exempted institutions according to Cabinet decisions No. 53/2020 that was released on 3/24/2020 and circular No. 54/2020 released on 3/26/2020. the circular focused specifically on supermarkets and mini markets, dairy and cheese shops, vegetables and fruit markets, meat, fish and poultry stores, sweets and pastry shops, water providers, and restaurants. Their new operating hours are 5 am to 8 pm.
- The Ministry issued the instructions for the electronic joint platform for municipalities (IMPACT) for evaluation, coordination and follow-up in order to facilitate the follow-up of health, social and security issues resulting from the coronavirus outbreak. The project is a partnership between the ministries of the Interior and Municipalities, Public Health, and Social Affairs and with the National Operations Room <https://cp.interior.gov.lb>

Ministry of Public Works

Port	entered			left		
	Import	Direction	#	export	Direction	#
Beirut	Container	Egypt	1			
		Fuel	Jounieh	1		
Tripoli				Empty	Turkey	1
Jounieh				Fuel	Beirut	1
Total			2			2
Flight	Arrives from	Carrying	Arrival time			
medical plane	Egypt	Lebanese citizens 5	13:10			
MEA	Italy	lebanese citizens 5	21:00			
Private plane	London	lebanese citizens 7	17:30			
private plane	Africa	lebanese citizens 10	20:12			
MEA	nigeria	lebanese citizens 10	17:10			
MEA	Nigeria	lebanese citizens 7	17:20			
Private plane	Greece	lebanese citizens	12:45			
MEA	London	lebanese citizens 3	00:00			
SKYLOUNGE	Qatar	lebanese citizens 4	04:00			
MEA	Al Riyad	lebanese citizens 8	18:30			
MEA	Al Riyad	lebanese citizens 8	11:30			
MEA	Frankfurt	lebanese citizen 8	13:30			
Private plane	Khartoum	lebanese citizen 10	19:00			
Total		87	planes 13			
Cargo planes	arrives from	carrying	time			
cargo plane	Qatar	goods	09:30			
cargo plane	Luxembourg	goods	14:55			
cargo plane	Qatar	goods	15:35			
cargo plane	Qatar	goods	23:45			
total			4			

Notes:

- The airport: All arrivals through Rafic Hariri International Airport are subject to health and security measures approved in the plan for the return of Lebanese expatriates by the Ministry of Public Health, the General Directorate of General Security and the General Directorate of Civil Aviation.
- Ports: Before allowing any vessel to enter the campus's harbor, the entire crew of the vessel is examined by a device approved by the Ministry of Public Health to ensure that there are no infections.

Objectives of the National Operations Room

The National Operations Room works on coordinating efforts in order to accomplish the following goals:

- First Objective: Control the spread of the virus through the application of precautionary measures, minimize direct contact among people, and increase awareness of the population and access to information.
- Second Objective: Ensure the continuity of services at the national level and adopt and encourage remote working.
- Third Objective: Increase health sector capacity by continuously assessing available resources, gaps and look for funding and technical assistance to build up capacities and case management.

General Directions and Recommendations

- Implement the decisions issued by the Presidency of the Council of Ministers at the level of public and private institutions and municipalities.
- Stay at home and don't go out unless it is necessary.
- Frequently wash hands and follow all safety measures set by the Ministry of Public Health.
- Avoid crowded places and social contact and commit to a safe distance between individuals.
- Seek medical care if you feel fever, cough and difficulty of breathes. Call the Ministry of Public Health hotline 1214 or 01-594459

Risks that Might Result in the Rapid Spread of the Virus

- Lack of adherence to the medical advisories.
- Disrespecting to compulsory home quarantine.
- The spread of the virus in crowded places.
- Allowing gatherings to take place