



Lebanon National Operations Room

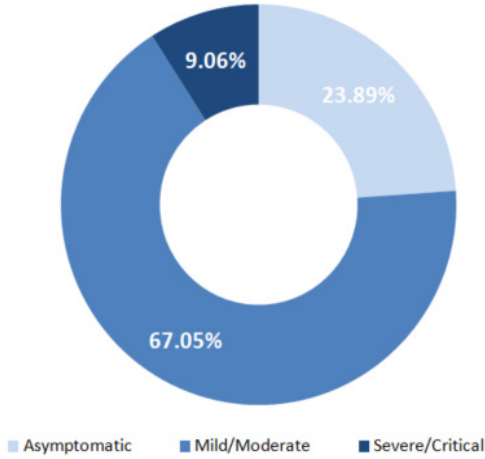
Daily Report on COVID-19

Sunday, April 26, 2020

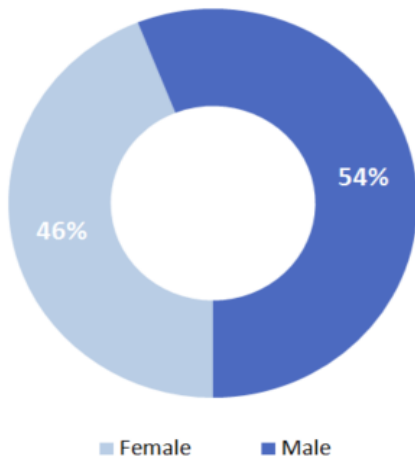
Report #39

Time published: 17:00

Status of Cases

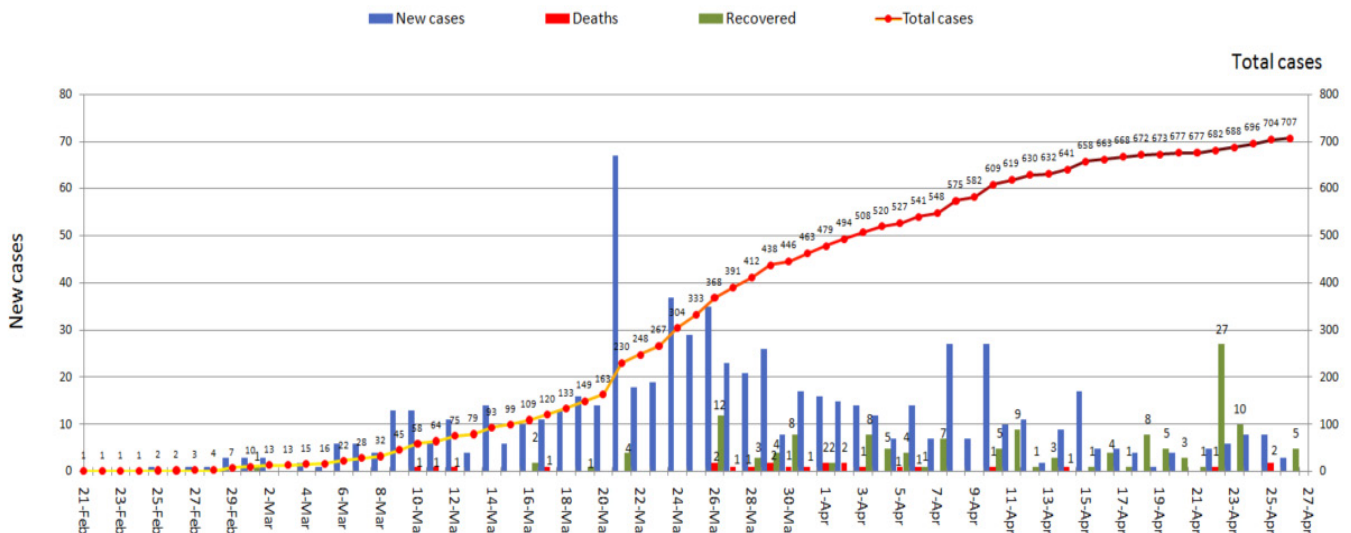


Distribution of cases by gender (%)

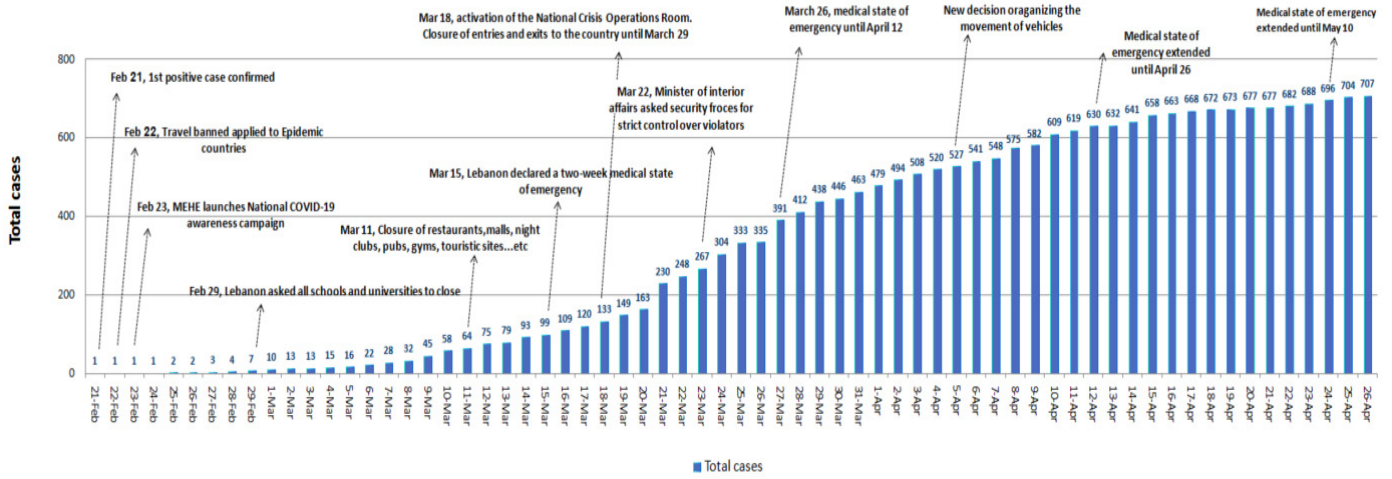


Registered cases since Feb. 21	707
Recoveries	145
Deaths	24
Current registered cases	538
New cases TOTAL=3	0 expatriates 3 locals
Conducted PCR tests since Feb. 21	25,318
PCR tests conducted in the last 24 hrs.	1,345
PCR tests conducted in the airport since April 5	2,501
PCR tests conducted in the airport in the last 24 hrs.	15

Cases per Day

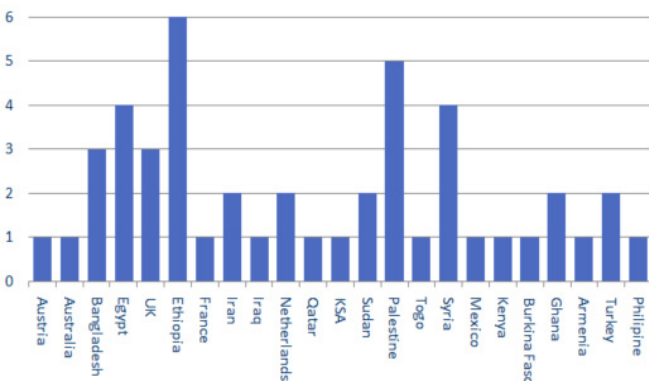


Chronology of decisions according to number of cases

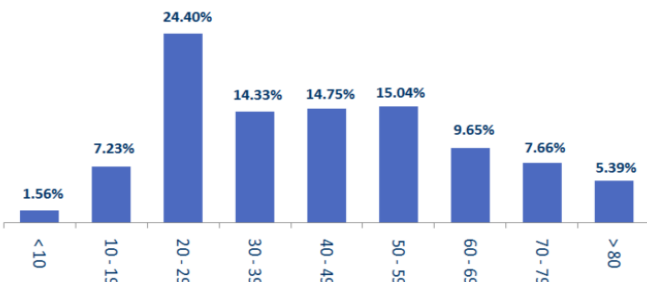


Distribution of cases by nationality

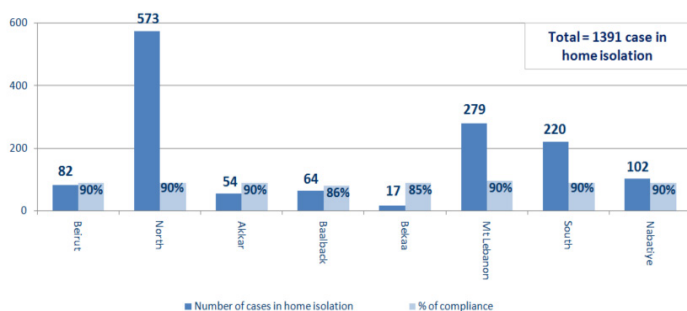
Lebanese: 660 cases out of 707 (93%)



Distribution of cases by age group (%)

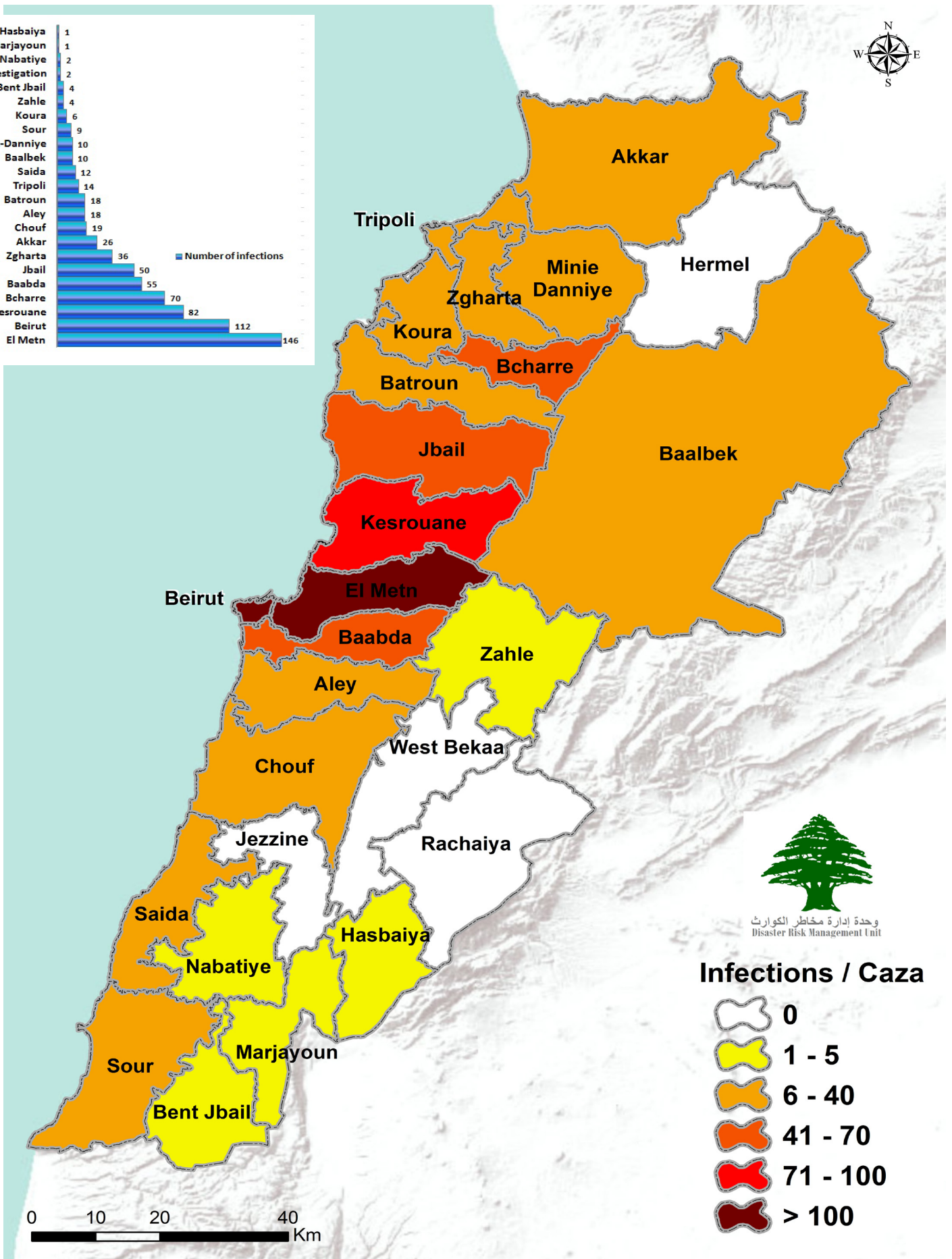
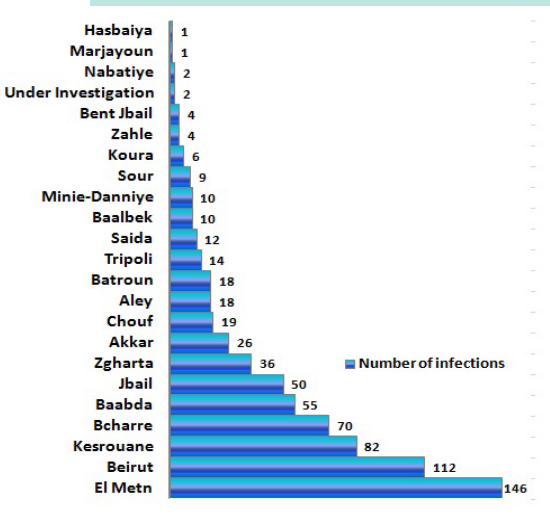


Number of individuals in home isolation and percentage of commitment to isolation



Location	Laboratories designated by MoPH to undertake testing
Beirut	Rafic Hariri University Hospital
Beirut	AUBMC
Beirut	HDF /Merieux / USJ
Beirut	Saint Georges Roum
Kesrouane	Bouar Governmental Hospital
Beirut	Rizk LAU
Byblos	Notre Dames de Secours
Baalbek	Baalbek Governmental Hospital
Tripoli	New Mazloum Hospital
Koura	Haykel Hospital
Metn	Hopital Dr. S. Serhal
Metn	Hospital of Bhannes
Beirut	Lebanese Hospital Geitaoui
Baabda	Mount Lebanon Hospital
Baabda	Saint George Hospital
Chouf	Ain Wazain Hospital
Sidon	Hammoud Hospital
Zahle	Elias Al Hrawi Hospital

Number of Cases by Location



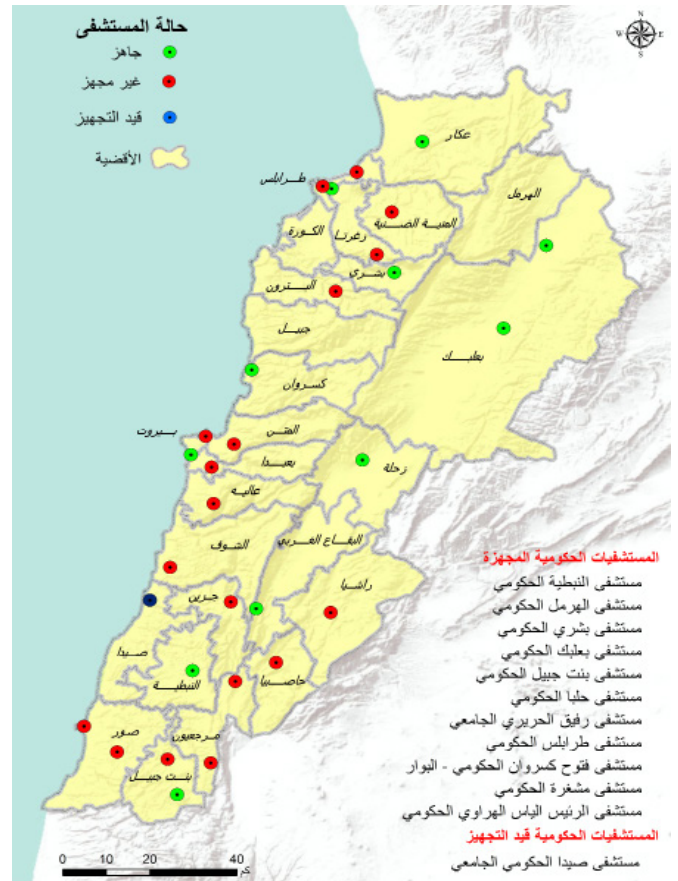
وحدة إدارة مخاطر الكوارث
Disaster Risk Management Unit

Level of Preparedness of Public and Private Hospitals



Status of private hospitals: AUBMC, Hotel Dieu Hospital, Jbeil Maounat Hospital, Al Roum Hospital

Green: Ready
 Yellow: District



Status of public hospitals

Green: Ready - Blue: Will be ready in a week

Red: Not ready - Yellow: District

Public hospitals ready: RHUH, Baalbek Governmental Hospital, Bouar Governmental Hospital, Halba Governmental Hospital, Bshareh Governmental Hospital, Tipoli Governmental Hospital, Bint Jbeil Governmental Hospital, Mashghara governmental Hospital, Nabatieh Governmental Hospital, Hermel Governmental Hospital, Al Hrawi Hospital, Fattouh Hospital.

In process of becoming ready: Saida hospital

Actions Taken at the Governorate and Municipal Level

Isolation centers approved by The Committee for the Follow up on Coronavirus Preventive Measures and Procedures

Friday, April 10, 2020

The committee responsible for specifying potential isolation centers includes an officer from the General Secretariat of the Supreme Council of Defense, a medical doctor in the army, an engineer from the army, and a representative from the Order of Nurses in Lebanon.

The committee aims to inspect possible isolation centers in coordination with the concerned governorates and municipalities.

Governorate	Number of isolation centers
Mount Lebanon	16
North	2
South	4
Akkar	11
Bekaa	10
Total	43

Governorate	Level of commitment to the decision to close all businesses	Sectors violating closure decision
Beirut	85%	Commercial stores, violating the car mobility decision
North	75%	commercial stores, gatherings, protests, private businesses
Akkar	80%	commercial stores, violating the car mobility decision, gatherings in front of super markets
Baalbek-Hermel	75%	Cafes, Commercial stores, violating the car mobility decision, private businesses, farmers' gatherings
Bekaa	85%	Commercial stores, violating the car mobility decision
Mount Lebanon	85%	Commercial stores, violating the car mobility decision
South	90%	violating the car mobility decision, gatherings in super markets, protests
Nabatieh	90%	protests

Ministry of Public Health

- Issued a daily report on new cases and the status of existing cases in government and private hospitals.
- Implemented the health measures agreed upon within the Lebanese government's plan to return Lebanese expatriates during flights and at the airport, and defined the required isolation procedures according to the health status of expatriates in coordination with the Committee for the Follow up on Coronavirus Preventive Measures and Procedures, the Ministry of Foreign Affairs, the Ministry of Public Works and Transport, the General Directorate of Public Security and Middle East Airlines.
- Continues to equip government hospitals and others.
- Field examination of the hospitals and laboratories designated by the ministry to deal with the emerging coronavirus.
- Following up on the health situation of expatriates who have returned to Lebanon.
- Conducting and following up on conducted PCR tests for citizens in various Lebanese regions.
- The Ministry of Public Health has started increasing the number of PCR examinations and distributing medical supplies to government hospitals as part of its plan that focuses on random sampling every day in various Lebanese regions, which will allow to define the epidemic stage and take appropriate decisions.
- Received medical assistance from other countries to increase the capacity of hospitals and medical personnel.

Lebanese Red Cross

- 869 new suspected cases were transferred to hospitals (9 new cases)
- 1,244 trained paramedics

- 36 trained ambulance centers
- 11 additional ambulance centers ready to respond when needed
- 6587 PCR tests transported to laboratories (1,756 new tests)
- 139 volunteers responsible for transporting PCR tests to laboratories
- 53,387 number of those benefiting from awareness sessions

Ministry of Foreign Affairs

- The ministry was informed that several expatriated donated money to governmental hospitals and the medical staff.
- The Ministry is following up with the Lebanese missions and consulates to organize the nominal regulations for expatriate students with limited financial capabilities who will be provided with financial assistance.
- Based on the decision of the Ministerial Committee for the Return of Expatriates, the Ministry of Foreign Affairs, and in coordination with the ministries and other relevant authorities, the ministry will follow up to determine the countries that will be included in the second stage of the plan to return Lebanese Expats after April 26, 2020 and prepare the regulation.
- Note:

Website for Lebanese expatriates who wish to return to Lebanon: <https://mfa.gov.lb/arabic/return-to-lebanon>

Website for student expatriates: <https://mfa.gov.lb/arabic/students-abroad>

Security services (Internal Security Forces, General Security, State Security, Army, General Directorate of Civil Defense)

- The Lebanese army and other security services implemented strict measures on all Lebanese territory to ensure public mobilization.
- The army closed 90 shops, dispersed 48 public gatherings.

The army also supported a number of municipalities in implementing precautionary measures. The army also shared the names of the 110 blocked roads by the municipalities. Also, the army distributed food units to families in need.

- General Security Forces followed up on the airport's set regulations for the return of Lebanese expatriates to their homeland and tracked potential cases in various Lebanese regions and ensured that they're adhering to the terms of home isolation. In addition, they dispersed several gatherings and aided several municipalities in issuing several written warnings to institutions and individuals that did not adhere to the decisions of the Council of Ministers. Forces also informed responsible parties of the PCR tests that are randomly being conducted in different areas in Lebanon by MoPH and that the Minister of Public Health visited a Palestinian refugee camp.
- ISF issued 201 written warnings, of which 138 directed at cars that violated the decision of the Ministry of Interior and Municipalities, 26 warnings were directed at institutions and 38 were directed at individuals who violated the decisions of the Council of Ministers. The forces have issued 19,581 written warnings since March 8.
- The General Directorate of Civil Defense carried out 3 transportation missions for dialysis patients to hospitals based on the Minister of Interior and Municipalities Decision No. 479/2020. It also prepared 365 personnel and 61 ambulances, to interfere, when necessary, and transport those infected with the emerging coronavirus. It also trained 300 members to transport infected individuals. The directorate also carried out sterilization missions in public and private areas that were excluded from the decision to close.
- State Security Forces visited different Lebanese regions and closed a number of shops. They followed up on cases in home isolations.

Ministry of Interior and Municipalities

- Implementing the extension of the general mobilization procedures issued by the Council of Ministers in accordance with Resolution No. 24/4/2020 from 4/27/2020 to 10/5/2020, provided that this accompanies the approval of a five-stage plan to open sectors in a manner that takes into account potential risks.
- The Ministry issued a circular No. 45/ 2020 on 19/4/2020 regarding the amendment of circular No. 40/2020 related to the operating times of exempted institutions according to Cabinet decisions No. 53/2020 that was released on 3/24/2020 and circular No. 54/2020 released on 3/26/2020. the circular focused specifically on supermarkets and mini markets, dairy and cheese shops, vegetables and fruit markets, meat, fish and poultry stores, sweets and pastry shops, water providers, and restaurants. Their new operating hours are 5 am to 8 pm.
- The Ministry issued the instructions for the electronic joint platform for municipalities (IMPACT) for evaluation, coordination and follow-up in order to facilitate the follow-up of health, social and security issues resulting from the coronavirus outbreak. The project is a partnership between the ministries of the Interior and Municipalities, Public Health, and Social Affairs and with the National Operations Room <https://cp.interior.gov.lb>

Ministry of Social Affairs

- In coordination with the Ministry of Social Affairs, and
- within the social emergency plan, the Lebanese army began distributing aid to the families of students in public schools in various Lebanese regions, and the army audited nearly 50% of the regulations, provided that it begins Auditing the regulations for public drivers in the next stage.

Ministry of Public Works

Port	entered			left		
	Import	Direction	#	export	Direction	#
Beirut				containers	Syria	1
Tripoli	Salt	Egypt	1	Empty	Syria	1
	Sugar	Russia	1	Fuel	Al Zahrani port	1
Chekka	Fuel	Italy	1			
Al Zahrani	Fuel	Tripoli port	1			
Total			4			3

Flight	Arrives from	carrying	Arrival time
Cargo plane	Egypt	goods	00:15
Cargo plane	Egypt	goods	07:10
Cargo plane	Qatar	goods	16:45
cargo plane	Qatar	goods	21:00
total			4

Notes:

- The airport: All arrivals through Rafic Hariri International Airport are subject to health and security measures approved in the plan for the return of Lebanese expatriates by the Ministry of Public Health, the General Directorate of General Security and the General Directorate of Civil Aviation.
- Ports: Before allowing any vessel to enter the campus's harbor, the entire crew of the vessel is examined by a device approved by the Ministry of Public Health to ensure that there are no infections.

Ministry of Agriculture

-
- The Ministry of Agriculture issued general guidelines for the management of solid household waste in light of the risks of the virus, including general guidelines on how to ensure the continuity of work of solid waste management facilities, preventive measures and procedures during process, in addition to the mechanism for reporting the presence of waste and how to get rid of it.

Objectives of the National Operations Room

The National Operations Room works on coordinating efforts in order to accomplish the following goals:

- First Objective: Control the spread of the virus through the application of precautionary measures, minimize direct contact among people, and increase awareness of the population and access to information.
- Second Objective: Ensure the continuity of services at the national level and adopt and encourage remote working.
- Third Objective: Increase health sector capacity by continuously assessing available resources, gaps and look for funding and technical assistance to build up capacities and case management.

General Directions and Recommendations

- Implement the decisions issued by the Presidency of the Council of Ministers at the level of public and private institutions and municipalities.
- Stay at home and don't go out unless it is necessary.
- Frequently wash hands and follow all safety measures set by the Ministry of Public Health.
- Avoid crowded places and social contact and commit to a safe distance between individuals.
- Seek medical care if you feel fever, cough and difficulty of breathes. Call the Ministry of Public Health hotline 1214 or 01-594459

Risks that Might Result in the Rapid Spread of the Virus

- Lack of adherence to the medical advisories.
- Disrespecting to compulsory home quarantine.
- The spread of the virus in crowded places.
- Allowing gatherings to take place