



# Lebanon National Operations Room

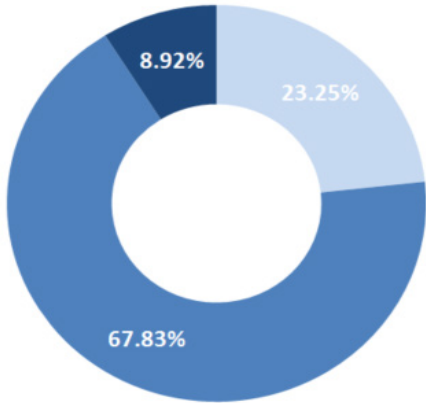
## Daily Report on COVID-19

Friday, April 24, 2020

Report #37

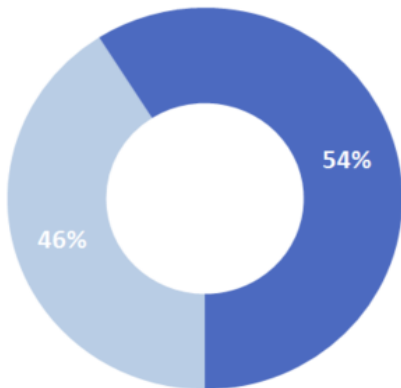
Time published: 17:00

### Status of Cases



Asymptomatic Mild/Moderate Severe/Critical

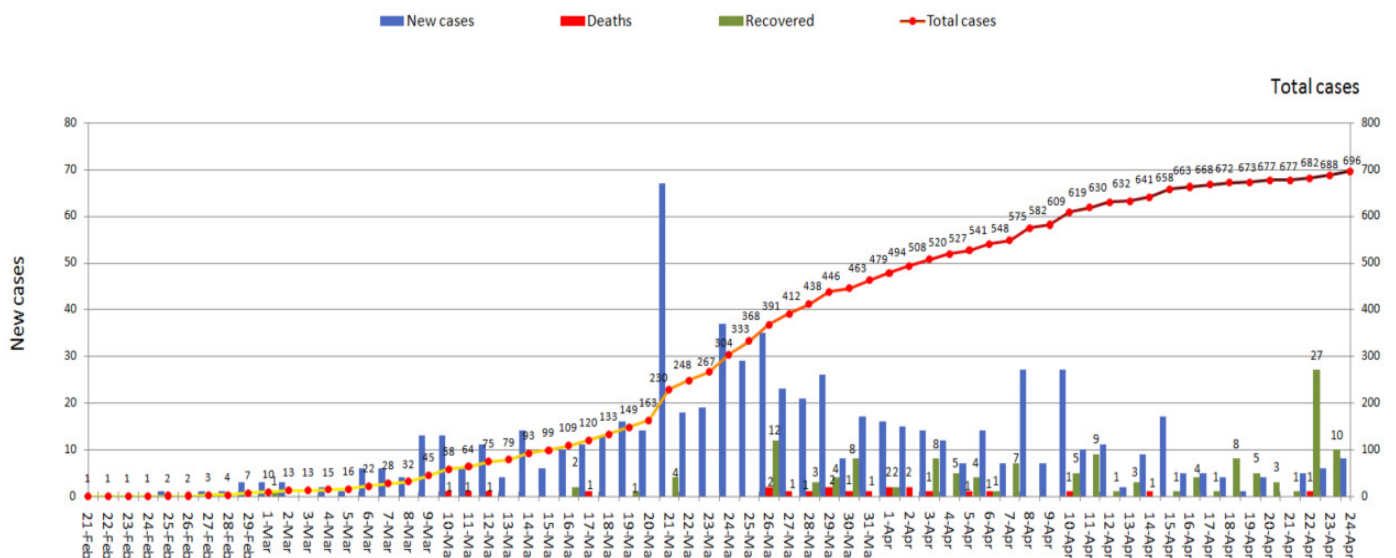
### Distribution of cases by gender (%)



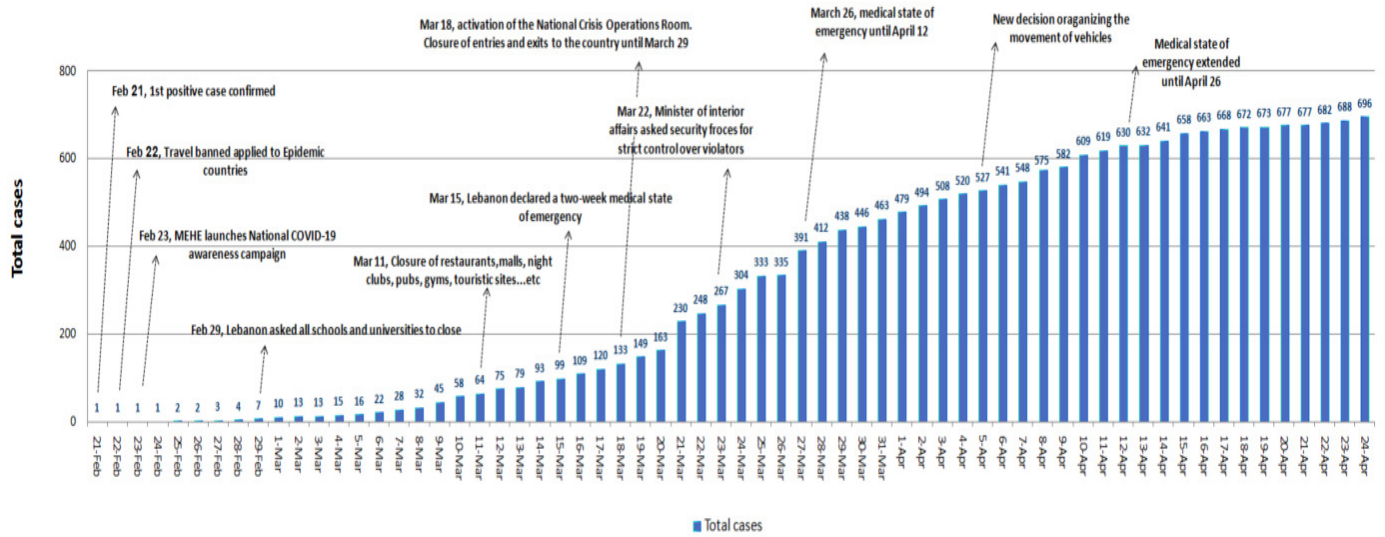
Female Male

Registered cases since Feb. 21	696
Recoveries	140
Deaths	22
Current registered cases	534
New cases TOTAL=8	2 expatriates 6 locals
Conducted PCR tests since Feb. 21	22,843
PCR tests conducted in the last 24 hrs.	1,123
PCR tests conducted in the airport since April 5	2,486
PCR tests conducted in the airport in the last 24 hrs.	4

### Cases per Day

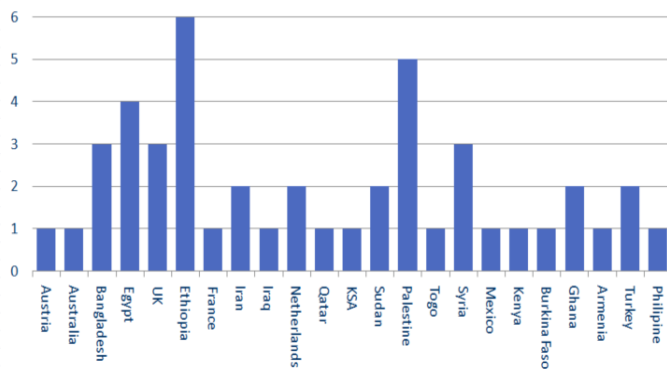


# Chronology of decisions according to number of cases

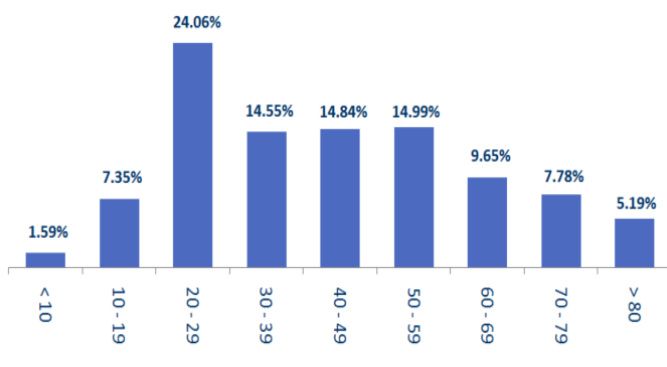


**Distribution of cases by nationality**

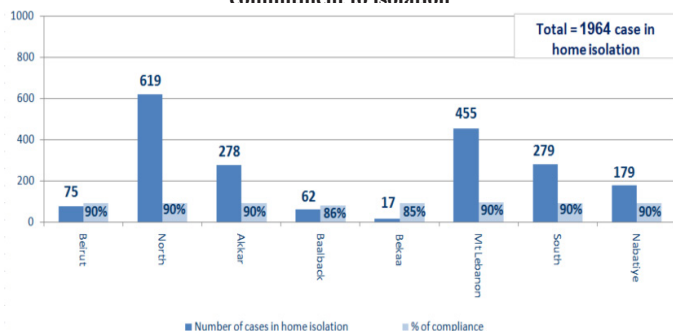
Lebanese: 650 cases out of 696 ( 93%)



**Distribution of cases by age group (%)**

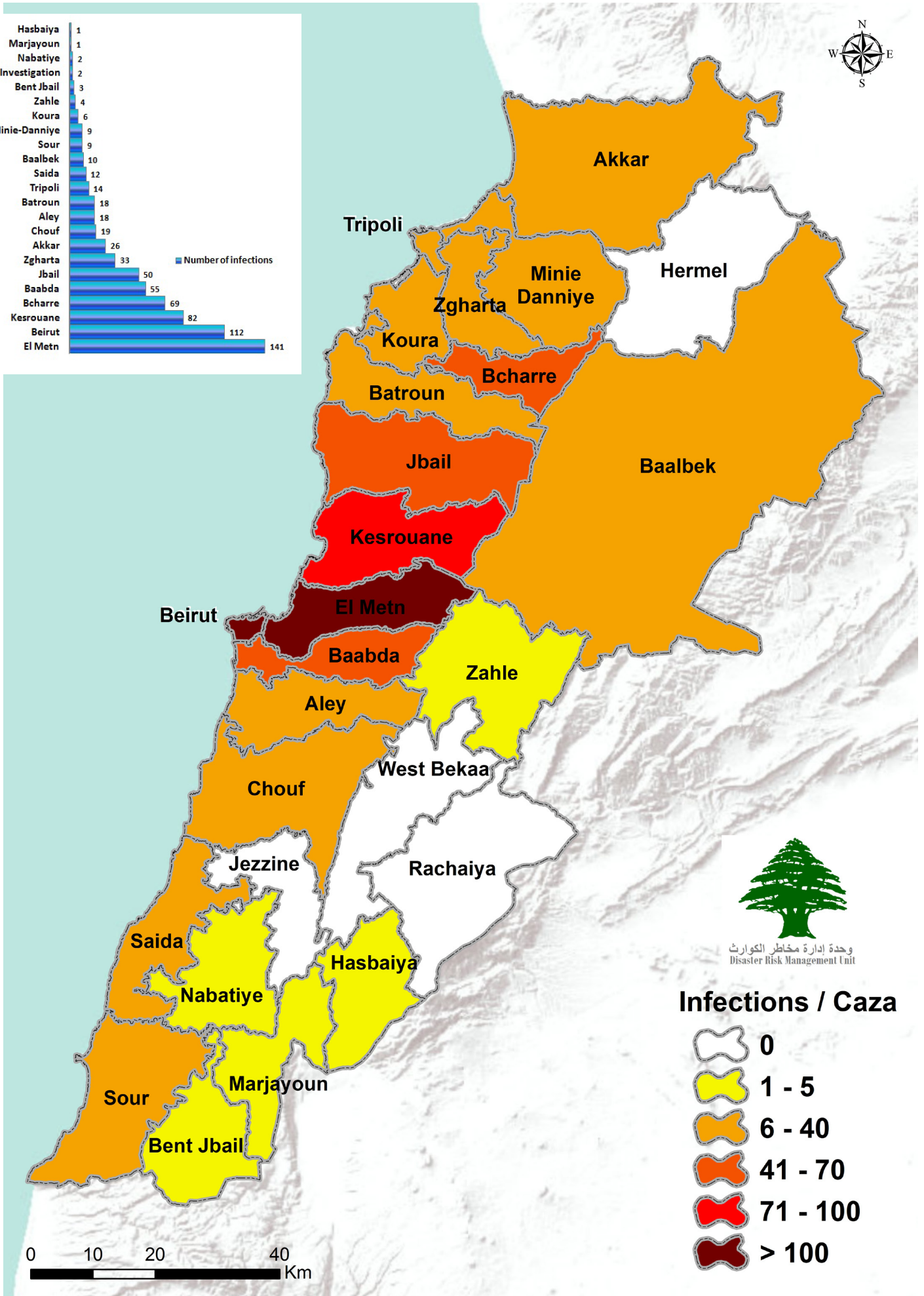
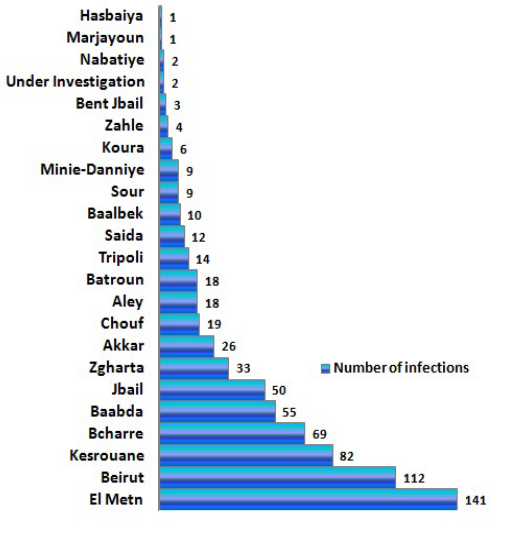


**Number of individuals in home isolation and percentage of commitment to isolation**



Location	Laboratories designated by MoPH to undertake testing
Beirut	Rafic Hariri University Hospital
Beirut	AUBMC
Beirut	HDF /Merieux / USJ
Beirut	Saint Georges Rوم
Kesrouane	Bouar Governmental Hospital
Beirut	Rizk LAU
Byblos	Notre Dames de Secours
Baalbek	Baalbek Governmental Hospital
Tripoli	New Mazloum Hospital
Koura	Haykel Hospital
Metn	Hopital Dr. S. Serhal
Metn	Hospital of Bhannes
Beirut	Lebanese Hospital Geitaoui
Baabda	Mount Lebanon Hospital
Baabda	Saint George Hospital
Chouf	Ain Wazain Hospital
Sidon	Hammoud Hospital
Zahle	Elias Al Hrawi Hospital

# Number of Cases by Location



## Infections / Caza

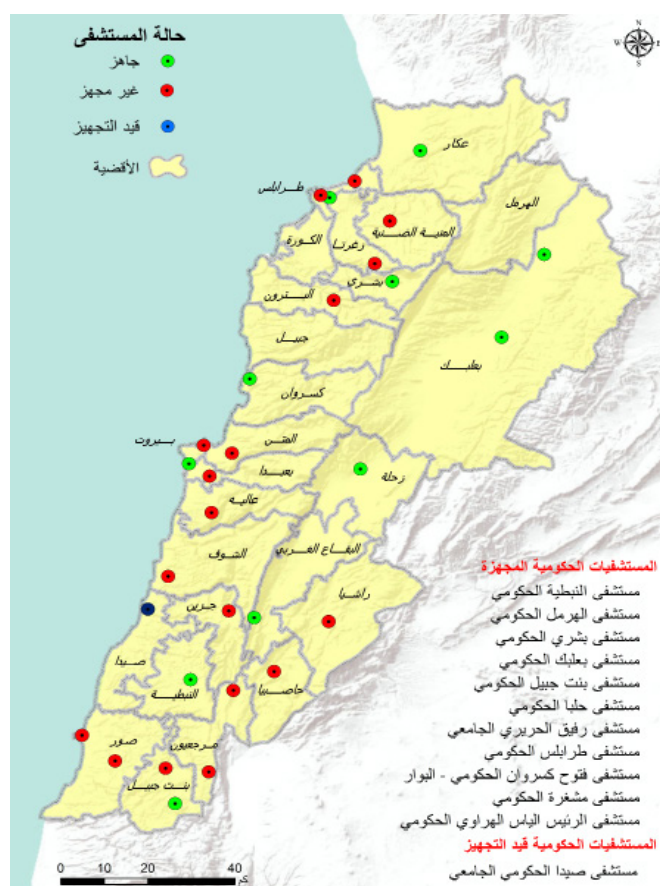


## Level of Preparedness of Public and Private Hospitals



Status of private hospitals: AUBMC, Hotel Dieu Hospital, Jbeil Maounat Hospital, Al Roum Hospital

Green: Ready  
 Yellow: District



Status of public hospitals  
 Green: Ready - Blue: Will be ready in a week  
 Red: Not ready - Yellow: District  
 Public hospitals ready: RHUH, Baalbek Governmental Hospital, Bouar Governmental Hospital, Halba Governmental Hospital, Bshareh Governmental Hospital, Tipoli Governmental Hospital, Bint Jbeil Governmental Hospital, Mashghara governmental Hospital, Nabatieh Governmental Hospital, Hermel Governmental Hospital, Al Hrawi Hospital, Fattouh Hospital.  
 In process of becoming ready: Saida hospital

## Actions Taken at the Governorate and Municipal Level

### Isolation centers approved by The Committee for the Follow up on Coronavirus Preventive Measures and Procedures Friday, April 10, 2020

The committee responsible for specifying potential isolation centers includes an officer from the General Secretariat of the Supreme Council of Defense, a medical doctor in the army, an engineer from the army, and a representative from the Order of Nurses in Lebanon.

The committee aims to inspect possible isolation centers in coordination with the concerned governorates and municipalities.

Governorate	Number of isolation centers
Mount Lebanon	16
North	2
South	4
Akkar	11
Bekaa	10
<b>Total</b>	<b>43</b>

Governorate	Level of commitment to the decision to close all businesses	Sectors violating closure decision
Beirut	75%	Commercial stores, violating the car mobility decision, car protests, traffic
North	70%	violating the car mobility decision, commercial stores, gatherings, protests, gathering in mosques and churches
Akkar	75%	commercial stores, violating the car mobility decision, gatherings
Baalbek-Hermel	80%	Cafes, Commercial stores, violating the car mobility decision, protests in front of BDL, farmers' gatherings
Bekaa	85%	Commercial stores, violating the car mobility decision
Mount Lebanon	80%	Commercial stores, violating the car mobility decision, protests and road blockage
South	85%	violating the car mobility decision, gatherings in front of ATM machines and markets, protests
Nabatieh	85%	Gatherings in front of banks, commercial stores violating the car mobility decision.

### Ministry of Public Health

- Issued a daily report on new cases and the status of existing cases in government and private hospitals.
- Implemented the health measures agreed upon within the Lebanese government's plan to return Lebanese expatriates during flights and at the airport, and defined the required isolation procedures according to the health status of expatriates in coordination with the Committee for the Follow up on Coronavirus Preventive Measures and Procedures, the Ministry of Foreign Affairs, the Ministry of Public Works and Transport, the General Directorate of Public Security and Middle East Airlines.
- Continues to equip government hospitals and others.
- Field examination of the hospitals and laboratories designated by the ministry to deal with the emerging coronavirus.
- Following up on the health situation of expatriates who have returned to Lebanon.
- Conducting and following up on conducted PCR tests for citizens in various Lebanese regions.
- The Ministry of Public Health has started increasing the number of PCR examinations and distributing medical supplies to government hospitals as part of its plan that focuses on random sampling every day in various Lebanese regions, which will allow to define the epidemic stage and take appropriate decisions.
- Received medical assistance from other countries to increase the capacity of hospitals and medical personnel.

### Lebanese Red Cross

- 854 new suspected cases were transferred to hospitals (21 new cases)
- 1,244 trained paramedics

- 36 trained ambulance centers
- 11 additional ambulance centers ready to respond when needed
- 4,413 PCR tests transported to laboratories (1,510 new tests)
- 95 volunteers responsible for transporting PCR tests to laboratories
- 53,272 number of those benefiting from awareness sessions

### Ministry of Foreign Affairs

- The ministry was informed that several expatriated donated money to governmental hospitals and the medical staff.
- The Ministry is following up with the Lebanese missions and consulates to organize the nominal regulations for expatriate students with limited financial capabilities who will be provided with financial assistance.
- Based on the decision of the Ministerial Committee for the Return of Expatriates, the Ministry of Foreign Affairs, and in coordination with the ministries and other relevant authorities, the ministry will follow up to determine the countries that will be included in the second stage of the plan to return Lebanese Expats after April 26, 2020 and prepare the regulation.
- Note:

Website for Lebanese expatriates who wish to return to Lebanon: <https://mfa.gov.lb/arabic/return-to-lebanon>

Website for student expatriates: <https://mfa.gov.lb/arabic/students-abroad>

### Security services (Internal Security Forces, General Security, State Security, Army, General Directorate of Civil Defense)

- The Lebanese army and other security services implemented strict measures on all Lebanese territory to ensure public

mobilization.

- The army closed 154 shops, dispersed 19 public gatherings. The army also supported a number of municipalities in implementing precautionary measures. The army also shared the names of the 120 blocked roads by the municipalities.
- General Security Forces followed up on the airport's set regulations for the return of Lebanese expatriates to their homeland and tracked potential cases in various Lebanese regions and ensured that they're adhering to the terms of home isolation. In addition, they dispersed several gatherings and aided several municipalities in issuing several written warnings to institutions and individuals that did not adhere to the decisions of the Council of Ministers. Forces also informed responsible parties of the PCR tests that are randomly being conducted in different areas in Lebanon by MoPH and of the donation of the Irish-Polish forces in the UNIFIL to the Bint Jbeil Municipal (medical masks, sterilizing tools...).
- ISF issued 766 written warnings, of which 547 directed at cars that violated the decision of the Ministry of Interior and Municipalities, 19 warnings were directed at institutions and 200 were directed at individuals who violated the decisions of the Council of Ministers. The forces have issued 19,104 written warnings since March 8.
- The General Directorate of Civil Defense carried out 7 transportation missions for dialysis patients to hospitals based on the Minister of Interior and Municipalities Decision No. 479/2020. It also prepared 365 personnel and 61 ambulances, to interfere, when necessary, and transport those infected with the emerging coronavirus. It also trained 300 members to transport infected individuals. The directorate also carried out sterilization missions in public and private areas that were excluded from the decision to close.
- State Security Forces visited different Lebanese regions and closed a number of shops. They also issued 26 warnings. The forces also dispersed a number of public gatherings.

### Ministry of Interior and Municipalities

- The ministry is following up on the issued Decree No. 479 on April 5, 2020, stating the new regulation allowing the mobilization of cars and trucks on specific days of the week according to their number plates.
- Following up on the implementation of the decision to extend the state of public mobilization until 12/4/2020 in accordance with Cabinet Resolution No. 1 dated 3/26/2020.
- The Ministry issued a circular No. 45/ 2020 on 19/4/2020 regarding the amendment of circular No. 40/2020 related to the operating times of exempted institutions according to Cabinet decisions No. 53/2020 that was released on 3/24/2020 and circular No. 54/2020 released on 3/26/2020. the circular focused specifically on supermarkets and mini markets, dairy and cheese shops, vegetables and fruit markets, meat, fish and poultry stores, sweets and pastry shops, water providers, and restaurants. Their new operating hours are 5 am to 8 pm.
- The Ministry issued the instructions for the electronic joint platform for municipalities (IMPACT) for evaluation, coordination and follow-up in order to facilitate the follow-up of health, social and security issues resulting from the coronavirus outbreak. The project is a partnership between the ministries of the Interior and Municipalities, Public Health,

and Social Affairs and with the National Operations Room <https://cp.interior.gov.lb>

### Ministry of Social Affairs

- In coordination with the Ministry of Social Affairs, and
- within the social emergency plan, the Lebanese army began distributing aid to the families of students in public schools in various Lebanese regions, and the army audited nearly 50% of the regulations, provided that it begins Auditing the regulations for public drivers in the next stage.

### Ministry of Public Works

Port	entered			left		
	Import	Direction	#	export	Direction	#
Beirut	livestock	Spain	1	containers	Italy	1
	containers	Tripoli	1			
	Warship	Emergency units	1			
Tripoli	goods	Turkey	1	Empty	Beirut	1
	fuel	Italy	1			
<b>Total</b>			<b>5</b>			<b>2</b>

Flight	Arrives from	carrying	Arrival time
Private plane	Africa	6 Lebanese citizens	19:00
MEA	Egypt	8 lebanese citizens	17:50
Flight	Departs to	carrying	deparutre time
MEA	Egypt	7 internationals	12:00
Private plane	Kuwait	Transit 84 passengers	13:00
Private plane	Qatar	Transit 49 passengers	110:00
Flight	Arrives from	carrying	Arrival time
cargo plane	Kuwait	goods	09:05
cargo plane DHL	Bahrain	goods	19:30
cargo plane	Turkey	goods	15:00
cargo plane	Qatar	goods	18:00
cargo plane	Egypt	goods	19:15
<b>total</b>			<b>5</b>

Notes:

- The airport: All arrivals through Rafic Hariri International Airport are subject to health and security measures approved in the plan for the return of Lebanese expatriates by the Ministry of Public Health, the General Directorate of General Security and the General Directorate of Civil Aviation.
- Ports: Before allowing any vessel to enter the campus's har-

bor, the entire crew of the vessel is examined by a device approved by the Ministry of Public Health to ensure that there are no infections.

## **Ministry of Agriculture**

- The Ministry of Agriculture issued general guidelines for the management of solid household waste in light of the risks of the virus, including general guidelines on how to ensure the continuity of work of solid waste management facilities, preventive measures and procedures during process, in addition to the mechanism for reporting the presence of waste and how to get rid of it.

## **Objectives of the National Operations Room**

The National Operations Room works on coordinating efforts in order to accomplish the following goals:

- First Objective: Control the spread of the virus through the application of precautionary measures, minimize direct contact among people, and increase awareness of the population and access to information.
- Second Objective: Ensure the continuity of services at the national level and adopt and encourage remote working.
- Third Objective: Increase health sector capacity by continuously assessing available resources, gaps and look for funding and technical assistance to build up capacities and case management.

## **General Directions and Recommendations**

- Implement the decisions issued by the Presidency of the Council of Ministers at the level of public and private institutions and municipalities.
- Stay at home and don't go out unless it is necessary.
- Frequently wash hands and follow all safety measures set by the Ministry of Public Health.
- Avoid crowded places and social contact and commit to a safe distance between individuals.
- Seek medical care if you feel fever, cough and difficulty of breathes. Call the Ministry of Public Health hotline 1214 or 01-594459

## **Risks that Might Result in the Rapid Spread of the Virus**

- Lack of adherence to the medical advisories.
- Disrespecting to compulsory home quarantine.
- The spread of the virus in crowded places.
- Allowing gatherings to take place