



# Lebanon National Operations Room

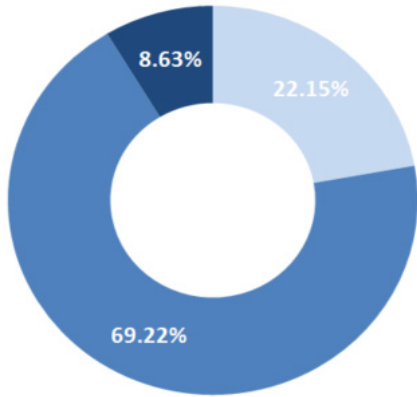
## Daily Report on COVID-19

Monday, April 13, 2020

Report #26

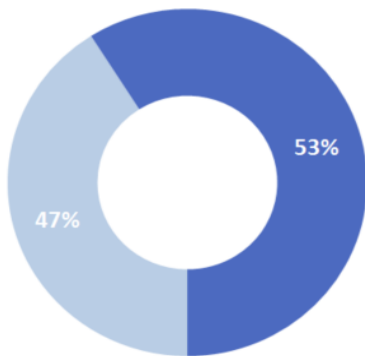
Time published: 16:30

### Status of Cases



Asymptomatic Mild/Moderate Severe/Critical

### Distribution of cases by gender (%)

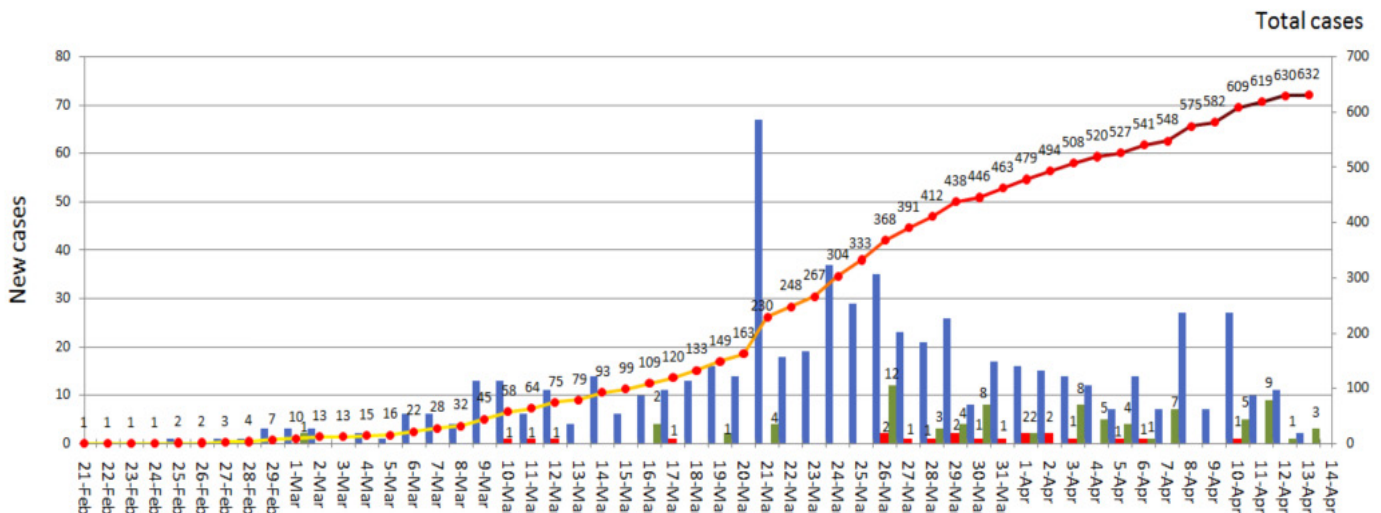


Female Male

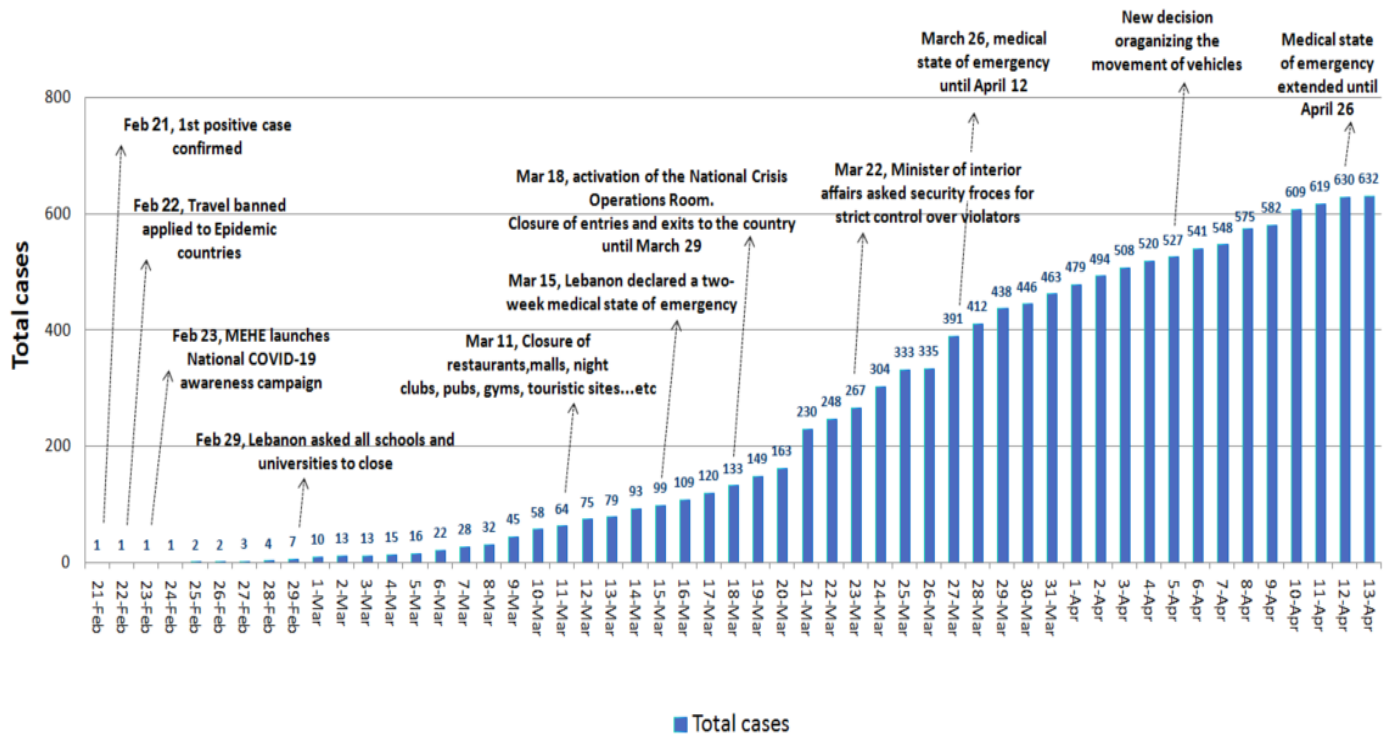
Registered cases since Feb. 21	632		
80	20	2	
Recoveries	Deaths	2 Locales	0 expatriates
Conducted PCR tests since Feb. 21	13,480		
PCR tests conducted in the last 24 hrs.	240		
PCR tests conducted in the airport since April 5	1,928		
PCR tests conducted in the airport in the last 24 hrs.	16		

### Cases per Day

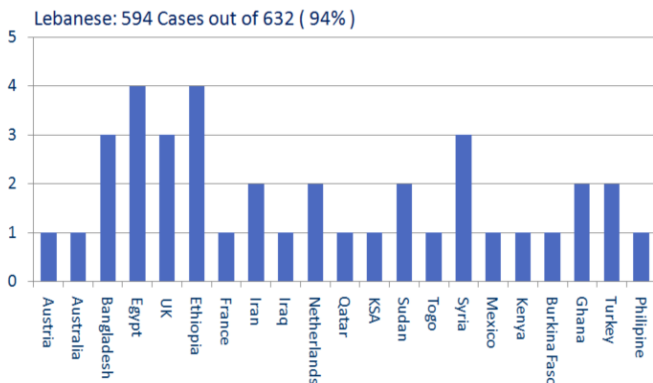
New cases Deaths Recovered Total cases



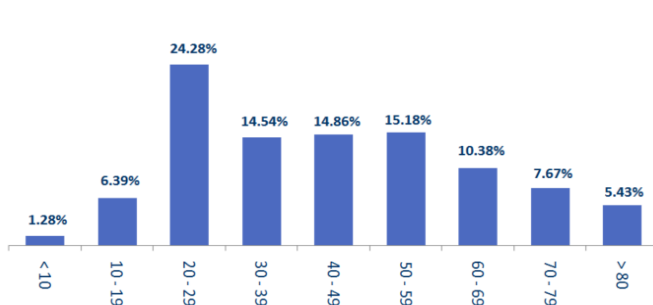
## Chronology of decisions according to number of cases



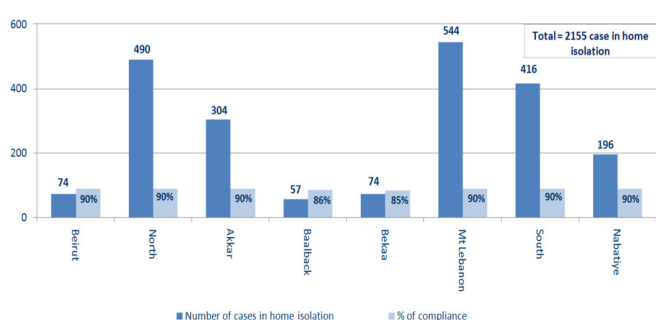
**Distribution of cases by nationality**



**Distribution of cases by age group (%)**

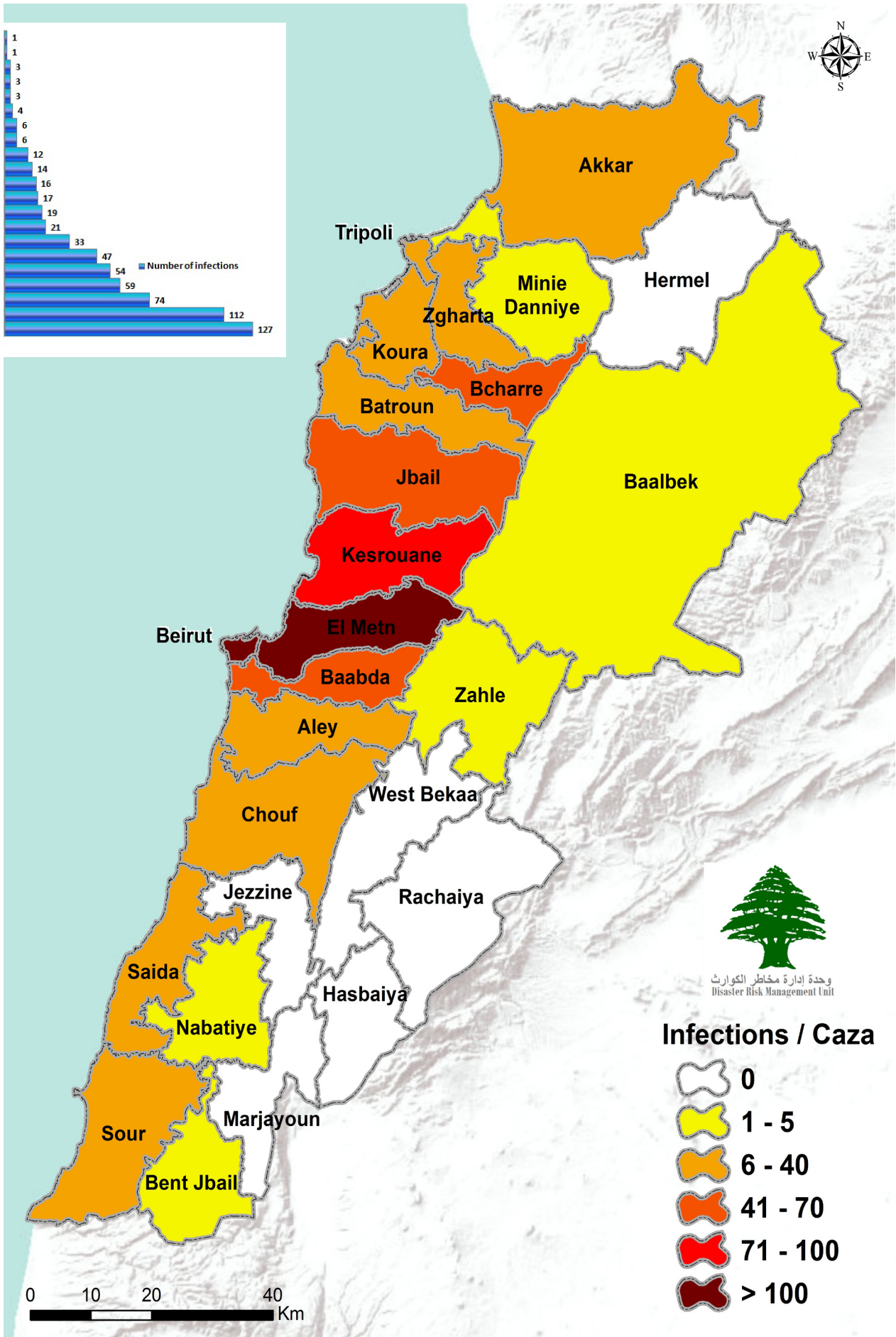
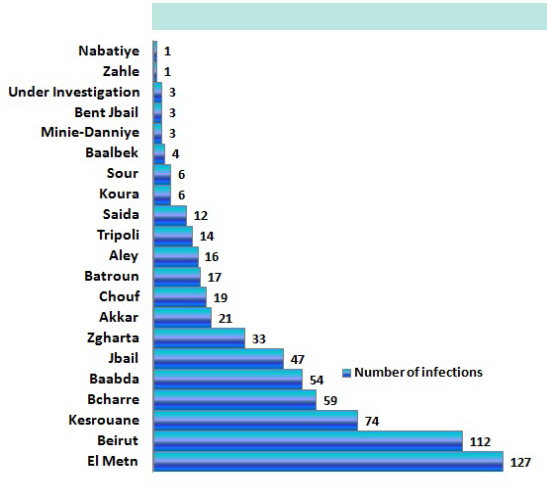


**Number of individuals in home isolation and percentage of commitment to isolation**



Location	Name of Laboratory
Beirut	Rafic Hariri University Hospital
Beirut	AUBMC
Beirut	Merieux / USJ
Beirut	Saint Georges Roum
Kesrouane	Bouar Governmental Hospital
Beirut	Rizk LAU
Byblos	Notre Dames de Secours
Baalbek	Baalbek Governmental Hospital
Tripoli	New Mazloum Hospital
Koura	Haykel Hospital
Metn	Hopital Dr. S. Serhal
Metn	Hospital of Bhannes
Beirut	Lebanese Hospital Geitaoui
Baabda	Mount Lebanon Hospital
Baabda	Saint George Hospital
Chouf	Ain Wazain Hospital
Sidon	Hammoud Hospital

# Number of Cases by Location



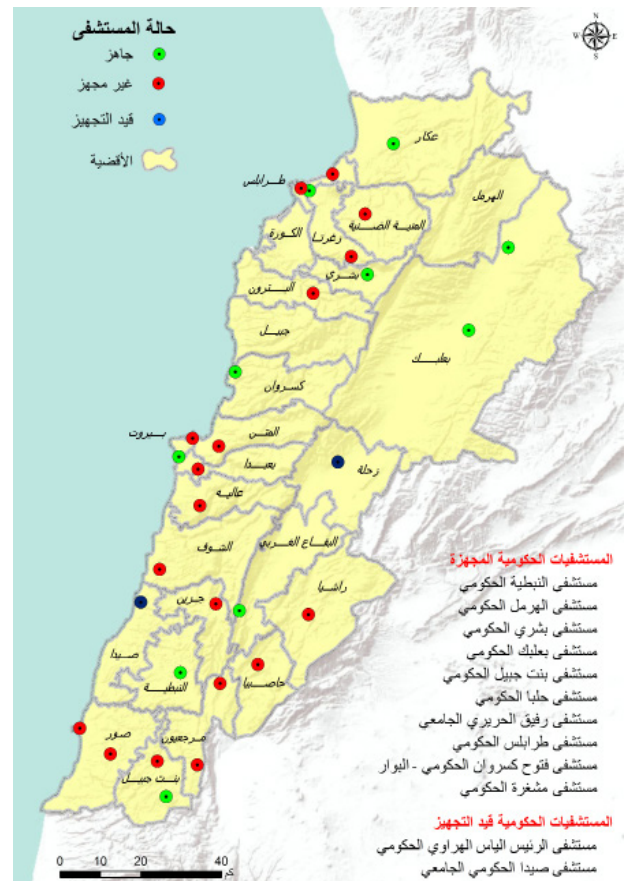


## Level of Preparedness of Public and Private Hospitals



Status of private hospitals: AUBMC, Hotel Dieu Hospital, Jbeil Maounat Hospital, Al Roum Hospital

Green: Ready  
 Yellow: District



Status of public hospitals

Green: Ready - Blue: Will be ready in a week  
 Red: Not ready - Yellow: District

Public hospitals ready: RHUH, Baalbek Governmental Hospital, Bouar Governmental Hospital, Halba Governmental Hospital, Bshareh Governmental Hospital, Tipoli Governmental Hospital, Bint Jbeil Governmental Hospital, Mashghara governmental Hospital, Nabatieh Governmental Hospital, Hermel Governmental Hospital  
 In process of becoming ready: Al Hrawi Hospital, Fattouh Hospital, Saida hospital

## Actions Taken at the Governorate and Municipal Level

### Isolation centers approved by The Committee for the Follow up on Coronavirus Preventive Measures and Procedures

Friday, April 10, 2020

The committee responsible for specifying potential isolation centers includes an officer from the General Secretariat of the Supreme Council of Defense, a medical doctor in the army, an engineer from the army, and a representative from the Order of Nurses in Lebanon.

The committee aims to inspect possible isolation centers in coordination with the concerned governorates and municipalities.

Governorate	Number of isolation centers
Mount Lebanon	16
North	2
South	4
Akkar	11
Bekaa	10
<b>Total</b>	<b>43</b>

Governorate	Level of commitment to the decision to close all businesses	Sectors violating closure decision
Beirut	90%	Commercial stores, violating the car mobility decision
North	90%	Public gatherings
Akkar	85%	violating the car mobility decision, commercial stores
Baalbek-Hermel	80%	violating the car mobility decision, cafes, commercial stores, gatherings in supermarkets, memorials.
Bekaa	90%	Commercial stores, violating the car mobility decision.
Mount Lebanon	90%	violating the car mobility decision, commercial stores
South	90%	violating the car mobility decision
Nabatieh	90%	commercial stores

### Ministry of Public Health

- Issued a daily report on new cases and the status of existing cases in government and private hospitals.
- Implemented the health measures agreed upon within the Lebanese government's plan to return Lebanese expatriates during flights and at the airport, and defined the required isolation procedures according to the health status of expatriates in coordination with the Committee for the Follow up on Coronavirus Preventive Measures and Procedures, the Ministry of Foreign Affairs, the Ministry of Public Works and Transport, the General Directorate of Public Security and Middle East Airlines.
- Continues to equip government hospitals and others.
- Field examination of the hospitals and laboratories designated by the ministry to deal with the emerging coronavirus.
- Following up on the health situation of expatriates who have returned to Lebanon.
- Conducting and following up on conducted PCR tests for citizens in various Lebanese regions, especially in Bcharreh.

### Lebanese Red Cross

- 693 new suspected cases were transferred to hospitals (15 new cases)
- 862 trained paramedics
- 520 volunteers
- 35 trained ambulance centers

### Ministry of Foreign Affairs

- The ministry was informed that several expatriated donated money to governmental hospitals and the medical staff.
- The ministry is working on resolving students' issues with

transferring money from Lebanon to the country they reside in.

- The Ministry of Foreign Affairs continues to communicate daily with Lebanese missions and external parties regarding the provision of medical assistance.
- The ministry is following up on the process of collecting information from expatriates who wish to return to Lebanon.
- The ministry is working in direct coordination with the Committee for the Follow up on Coronavirus Preventive Measures and Procedures, the Ministry of Public Health, the General Directorate of General Security, the General Directorate of Civil Aviation and the Middle East Airlines to ensure that all agreed procedures are being implemented when it comes to returning Lebanese expatriates.
- Note:

Website for Lebanese expatriates who wish to return to Lebanon: <https://mfa.gov.lb/arabic/return-to-lebanon>

Website for student expatriates: <https://mfa.gov.lb/arabic/students-abroad>

### Security services (Internal Security Forces, General Security, State Security, Army, General Directorate of Civil Defense)

- The Lebanese army and other security services implemented strict measures on all Lebanese territory to ensure public mobilization.
- The army closed 103 shops, dispersed 35 public gatherings. The army also supported a number of municipalities in implementing precautionary measures. The army also shared the names of the 113 blocked roads by the municipalities.
- General Security Forces followed up on the airport's set regulations for the return of Lebanese expatriates to their homeland and tracked potential cases in various Lebanese regions and ensured that they're adhering to the terms of home isolation. In addition, they dispersed several gatherings and aided several municipalities in issuing several written warnings to institutions and individuals that did not adhere to the decisions of the Council of Ministers.



- ISF issued 59 written warnings, of which 456 directed at cars that violated the decision of the Ministry of Interior and Municipalities, 5 warnings were directed at institutions and 45 were directed at individuals who violated the decisions of the Council of Ministers. So far, ISF has issued 11,604 written warnings since March 21.
- The General Directorate of Civil Defense carried out 3 transportation missions for dialysis patients to hospitals based on the Minister of Interior and Municipalities Decision No. 479/2020. It also prepared 72 personnel and 16 ambulances, to interfere, when necessary, and transport those infected with the emerging coronavirus. It also carried out sterilization missions in public and private areas that were excluded from the decision to close.
- State Security Forces visited different Lebanese regions and closed a number of shops. The forces also issued warnings institutions that violated the public mobilization decision and dispersed public gatherings and dispersed a number of public gatherings in Akkar, North, and Beqaa.

### Ministry of Interior and Municipalities

- The ministry is following up on the issued Decree No. 479 on April 5, 2020, stating the new regulation allowing the mobilization of cars and trucks on specific days of the week according to their number plates.
- Following up on the implementation of the decision to extend the state of public mobilization until 12/4/2020 in accordance with Cabinet Resolution No. 1 dated 3/26/2020.

### Ministry of Social Affairs

- The ministry is addressing the repercussions of the coronavirus. Within the first stage of the plan, the ministry collects all the data available through a national program in aim of supporting the poor families, the disabled and those with special needs, and citizens who lost their jobs due to the crisis. Information is collected in coordination with the Presidency of the Council of Ministers and the municipalities.
- Announced 1766 as its hotline to receive citizen complaints.
- The Ministry is supervising the implementation of the first phase of the social emergency response plan, through which assistance will be provided to about 65,000 families. The Lebanese army will distribute these aids to various Lebanese regions starting Tuesday 14/4/2020.

### Ministry of Public Works

Flight	Arrives from	Number of Lebanese On-board	Arrival Time
SKYLOUNGE	Abuja	13	15:25
MEA	UAE	6	17:45
MEA	London	7	17:45
SKYLOUNGE	Amman	9	13:30
SKYLOUNGE	Amman	9	14:30
SKYLOUNGE	Amman	9	17:30
EAS	Paris	1	18:20
MEA	Nigeria	9	16:00
SKYLOUNGE	Amman	8	18:20
SKYLOUNGE	Paris	2	18:45
SKYLOUNGE	Cyprus	4	22:30
SKYLOUNGE	Egypt	2	16:30
SKYLOUNGE	London	5	20:00
MEA	Riyad	7	14:30
PRIVATE PLANE	Egypt	3	22:30
MEA	Abu Dhabi	2	16:00
MEA	Liberia	12	19:15
ME212	France	131	18:35
ME580	Africa	132	18:35
ME204	London	120	00:35
<b>TOTAL</b>			<b>491</b>

Port	Left			Entered		
	Export	Direction	#	Import	Direction	#
Beirut	Battleship	UNIFEL	1	Wheat	Bulgaria	1
	containers	Jeddah	1	Battleship	UNIFEL	1
	containers	Turkey	1	containers	Egypt	2
	containers	Tripoli-Lebanon	1	Fuel	Georgia	1
Tripoli				Trucks	Turkey	1
Jounieh				fuel	Tunisia	1
Sidon				Marble	Turkey	1
Al Zahrani				Empty	Malta	1
				Empty	Cyprus	1
<b>Total</b>			<b>4</b>			<b>10</b>

- Notes:
- The airport: All arrivals through Rafic Hariri International Airport are subject to health and security measures approved in the plan for the return of Lebanese expatriates by the Ministry of Public Health, the General Directorate of General Security and the General Directorate of Civil Aviation.
- Ports: Before allowing any vessel to enter the campus's harbor, the entire crew of the vessel is examined by a device approved by the Ministry of Public Health to ensure that there are no infections.

## **Objectives of the National Operations Room**

The National Operations Room works on coordinating efforts in order to accomplish the following goals:

- First Objective: Control the spread of the virus through the application of precautionary measures, minimize direct contact among people, and increase awareness of the population and access to information.
- Second Objective: Ensure the continuity of services at the national level and adopt and encourage remote working.
- Third Objective: Increase health sector capacity by continuously assessing available resources, gaps and look for funding and technical assistance to build up capacities and case management.

## **General Directions and Recommendations**

- Implement the decisions issued by the Presidency of the Council of Ministers at the level of public and private institutions and municipalities.
- Stay at home and don't go out unless it is necessary.
- Frequently wash hands and follow all safety measures set by the Ministry of Public Health.
- Avoid crowded places and social contact and commit to a safe distance between individuals.
- Seek medical care if you feel fever, cough and difficulty of breathes. Call the Ministry of Public Health hotline 1214 or 01-594459

## **Risks that Might Result in the Rapid Spread of the Virus**

- Lack of adherence to the medical advisories.
- Disrespecting to compulsory home quarantine.
- The spread of the virus in crowded places.
- Allowing gatherings to take place