



## Lebanon National Operations Room

### Daily Report on COVID-19

Monday, November 09, 2020

Report #236

Time Published: 10:30 PM

New in the report:

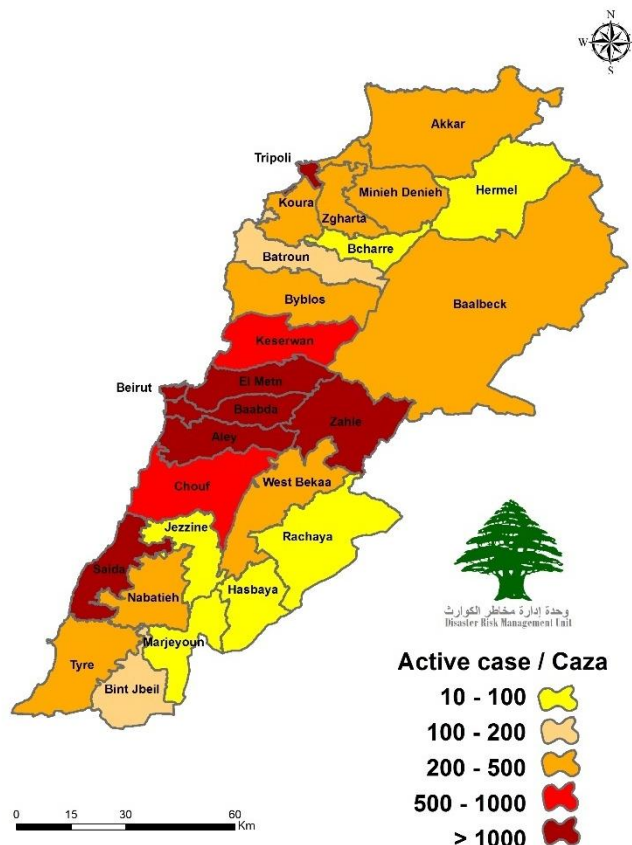
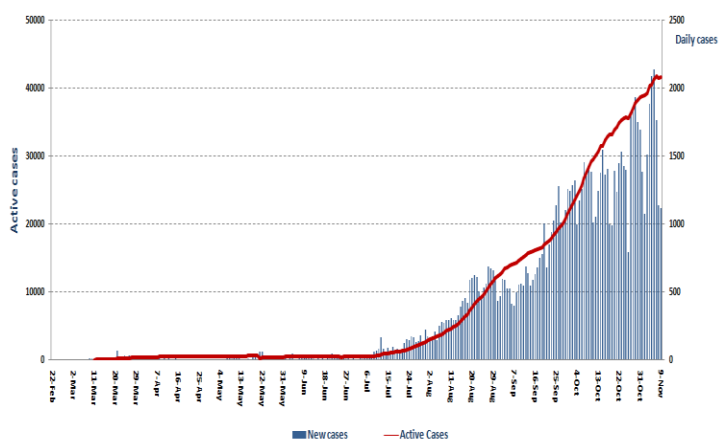
-Memo issued by The Ministry of Public Health #159 dated 6/11/2020 related to the examination of persons in contact with active positive cases and the conditions to release isolated and quarantined cases

<b>1,119</b> New Cases		<b>95355</b> Total Cases since 21.2.2020		<b>732</b> Total Deaths	<b>52,677</b> Total Recovered
<b>1,079</b> Residents	<b>40</b> Expats	<b>92,840</b> Residents	<b>2,515</b> Expats	<b>9</b> New Deaths	<b>949</b> New Recovered
<b>87</b> Deleted Status due to its recurrence	<b>1,503</b> Total Cases in the Health Sector		<b>41,946</b> Total Active Cases	<b>831</b> Hospitalized Cases	
<b>20,3%</b> Positivity rate	<b>1</b> Cases in the Health Sector	<b>41,115</b> Cases in Home Isolation	<b>134</b> Ventilated Cases	<b>18</b> New Cases in ICU	<b>305</b> Total cases in ICU
				<b>526</b> Mild cases	
<b>1,276,426</b> COVID-19 Tests since 21.2.2020		<b>Lebanon Status compared to the World</b>			
<b>1,133</b> COVID-19 Tests at Airport within 24 hrs.	<b>5,309</b> COVID-19 tests for residents within 24 hrs.	<b>Total Cumulative</b>		<b>95,355</b>	<b>50,964,306</b>
		<b>Total Deaths</b>		<b>732</b>	<b>1,265,158</b>
		<b>Deaths percentage</b>		<b>0,76%</b>	<b>2.48%</b>
		<b>Total recoveries</b>		<b>52,677</b>	<b>35,915,106</b>

Ref: Ministry of Public Health Data

### Number of Cases by Location

- 16,601 case is Under investigation



Active case / Caza

10 - 100

100 - 200

200 - 500

500 - 1000

> 1000

Beirut	107	Tripoli	48	Kesrwen	26	Matn	116
Ain El Mraisseh	6	Trablous Ez Zeitoun	5	Jounieh Sarba	3	Borj Hammoud	9
Ras Beyrouth	4	Trablous El Qoubbeh	5	Jounieh Kaslik	1	Nabaa	1
Manara	1	Trablous Ez Zahriyeh	3	Zouk M Kayel	3	Sinn El Fil	3
Qreitem	3	Mina	7	Adonis	1	Jdaidet El Matn	2
Hamra	6	Qalamoun	3	Jounieh Haret Sakhr	1	Baouchriyeh	1
Msaitbeh	2	Beddaoui	6	Tabarja	1	Daoura	2
Mar Elias	5	Madineh Ej Jdideh	3	Adma Oua Dafneh	4	Raouda	5
Dar El Fatwa	1	Other	16	Ballouneh	2	Sadd El Baouchriyeh	2
Sanayeh	5	<b>Koura</b>	<b>4</b>	Shayleh	1	Sabtiyeh	2
Zarif	1	Kousba	1	Jaaita	1	Dekouaneh	9
Mazraa	5	Enfeh	2	Borj El Ftouh	1	Tall Ez Zaatar	1
Borj Abou Haidar	1	Dahr El Ain	1	Daraaoun	1	Mkalles	1
Basta El Faouqa	2	<b>Zgharta</b>	<b>11</b>	Ghbaleh	1	Antelias	5
Tariq Ej Jdideh	11	Zgharta	2	Aachqout	5	Naqqach	2
Ras En Nabaa	2	Ardeh	1	<b>Aleyh</b>	<b>51</b>	Zalqa	3
Basta Et Tahta	4	Beit Aaoukar	1	Choueifat Amrusiye	5	Byaqout	2
Achrafiyeh	10	Aalma	3	Hay Es Sellom	14	Dbayeh	1
Other	38	Miziara	1	Khaldeh	1	Mazraat Deir Aaoukar	1
<b>Baabda</b>	<b>180</b>	Miriata	1	Choueifat Oumara	3	Mansouriyeh	9
Chiyah	14	Other	2	Deir Qoubel	3	Fanar	5
Jnah	10	<b>Batroun</b>	<b>3</b>	Aaramoun	16	Ain Saadeh	1
Ouzaai	3	Chikka	2	Bchamoun	4	Roumieh	2
Bir Hassan	1	Smar Jbayl	1	Aaley	2	Bsalim	7
Ghbayreh	30	<b>Nabatieh</b>	<b>7</b>	Aaytat	1	Nabay	2
Ain Er Roummaneh	5	Houmine Et Tahta	1	Bayssour	1	Rabiyeh	2
Furn Ech Chebbak	2	Zefta	2	Kfar Matta	1	Qornet Chehouane	3
Haret Hreik	34	Nmairiyeh	1	Other	1	Raboueh	2
Laylakeh	10	Kfar Sir	3	<b>Jbeil</b>	<b>7</b>	Beit Ech Chaar	1
Borj El Brajneeh	17	<b>Chouf</b>	<b>55</b>	Jbeil	2	Dik El Mehdi	8
Mreijeh	9	Mechref	1	Blat	1	Ain Aar	1
Tahouitat El Ghadir	4	Chhim	8	Aamchit	1	Mazraat Yachouaa	1
Baabda	3	Ketermaya	2	Nahr Ibrahim	1	Zakrit	1
Hazmiyeh	8	Barja	18	Berbara	1	Bikfaya	1
Fayadiyeh	1	Baassir	1	Other	1	Beit Chabab	2
Mar Taqla	1	Dibbiyeh	1	<b>Akkar</b>	<b>34</b>	Broummana	2
Hadath	15	Jiyeh	3	Aarqa	1	Baabdat	2
Jamhour	1	Dahr El Mghara	1	Borj El Aarab	1	Beit Meri	2
Kfar Chima	2	Rmeileh	2	Tikrit	1	Monteverdi	1
Ouadi Chahrour	1	Ouardaniyeh	2	Aakkar El Aatiqa	4	Khinchara	2
Bsaba	2	Zaarouriyeh	3	Koucha	2	Aintoura	2
Ras El Harf	1	Ain Zhalta	1	Nahr El Bared	2	Bteghrine	1
Aabadiyeh	1	Gharifeh	2	Aabdeh	1	Douar	1
Qrayeh	1	Jahliyah	2	Bzal	1	Chouaya	1
Jamhour	1	Kahlouniyeh	1	Hrar	1	Other	2
Salima	2	Barouk	1	Qarqaf	3	<b>Baalbeck</b>	<b>143</b>
Other	1	Other	6	Michmich	2	Baalbek	22
<b>Minieh Denieh</b>	<b>6</b>	<b>Zahle</b>	<b>60</b>	Fnaydeq	1	Ain Bourday	1
Minieh	2	El Berbara	2	Bireh	1	Douris	5
Sfireh	1	El Maallaqa	1	Chadra	1	Nahleh	4
Izal	1	Karak Nouh	2	Daoussa	1	Majdaloun	1
Other	2	Haouch El Oumara	9	Shanbouq	1	Haouch Barada	1
<b>West Bekaa</b>	<b>10</b>	Zahleh Aradi	2	Akroum	1	Maqneh	2
Machghara	2	Nabi Ayla	1	Other	9	Saaideh	1
Joubb Jannine	1	Hazerta	1	<b>Hermel</b>	<b>10</b>	Kfar Dane	1
		Ablah	1	Hermel	8	Hadath Baalbeck	1

Manara	1
Saouiri	3
Libbaya	1
Other	2
<b>Sour</b>	<b>44</b>
Sour	17
Sour El Bass	2
Sour Er Rachidiyeh	1
Borj Ech Chemali	6
Barich	1
Selaa	1
Ain Baal	1
Tayr Debba	1
Chehour	1
Aabbassiyeh	3
Mansouri	1
Majdel Zoun	1
Other	8
<b>Bint Jbeil</b>	<b>25</b>
Bint Jbeil	5
Rmaych	2
Soultaniyeh	1
Safad El Battikh	1
Haddatha	5
Khirbet Selm	1
Hariss	4
Qalaouiyeh	1
Yater	2
Beit Lif	2
Other	1

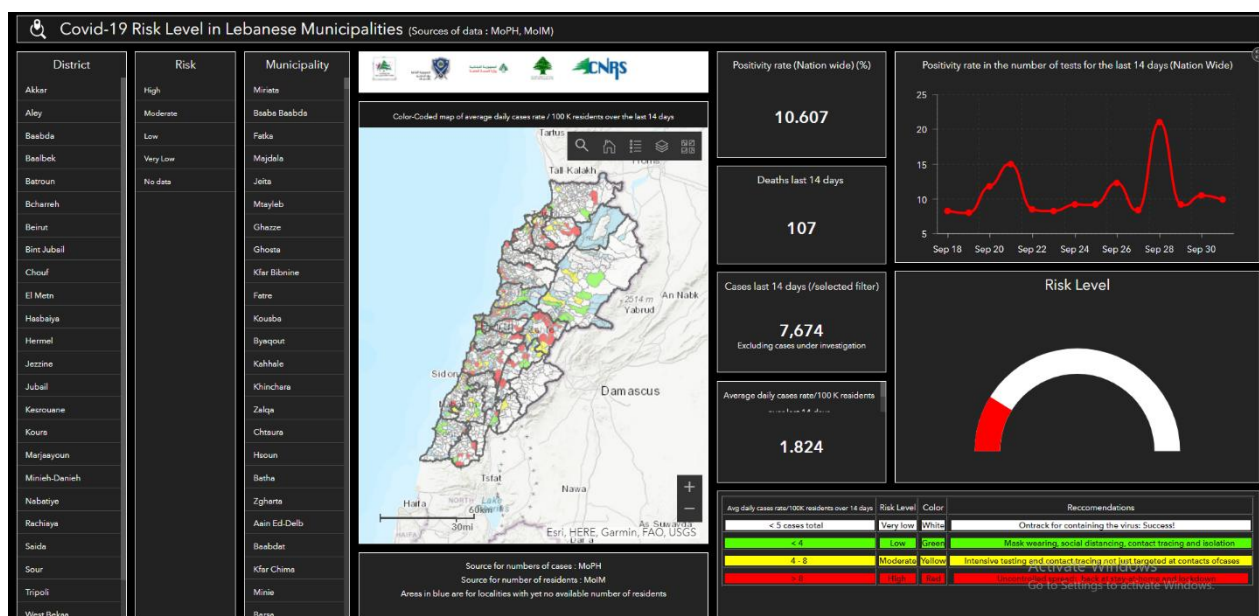
Ksara	6
Chtaura	3
Makseh	1
Taalabaya	2
Saadnayel	2
Qabb Elias	4
Majdel Aanjar	3
Riyag	2
Aali En Nahri	3
Raait	1
Terbol	4
Ain Kfar Zabad	2
Kfar Zabad	1
Other	7
<b>Jezzine</b>	<b>2</b>
Rihane	1
Other	1
<b>Marjeyoun</b>	<b>2</b>
Souaneh	1
Marjeyoun	1
<b>Hasbaya</b>	<b>2</b>
Hasbaya	1
Other	1

<b>Other</b>	<b>124</b>
--------------	------------

Other	2
<b>Saida</b>	<b>41</b>
Saida El Qadimeh	26
Hlaliyeh	1
Haret Saida	1
Ain El Heloueh	1
QraiyeH	1
Maghdoucheh	1
Qennarit	1
Aadloun	1
Babliyeh	1
Sarafand	3
Merouaniyeh	2
Kfar Hatta	1
Other	1

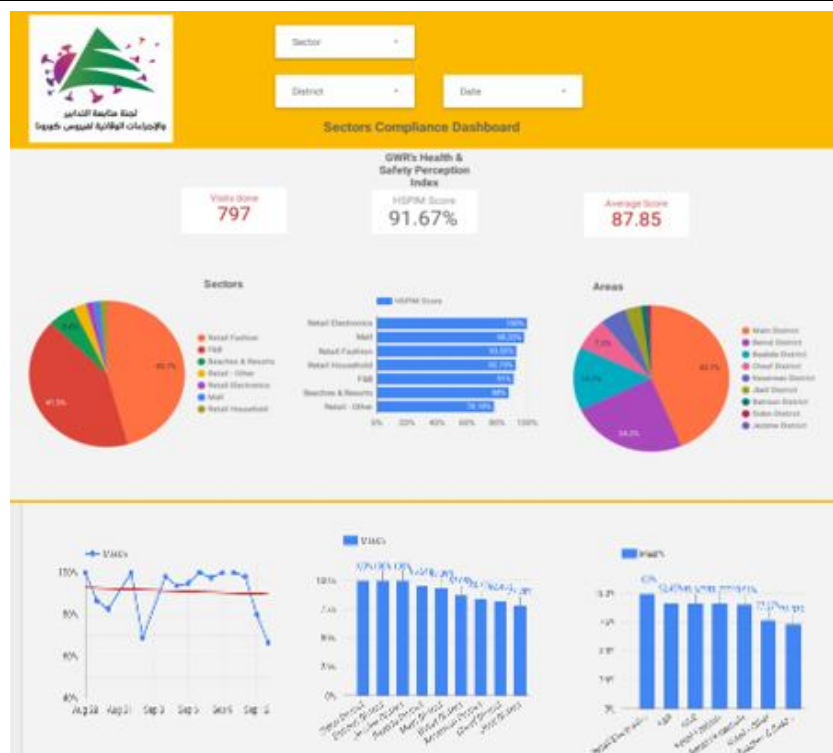
Fekeheh	2
Jdaidet El Fekeheh	1
El Ain	3
Nabi Osmane	1
Laboueh	1
Taoufiqiyeh	1
Chaat	2
Deir El Ahmar	5
Mchaitiyeh	1
Yammouneh	1
Bednayel	3
Qsarnaba	5
Temnine El Faouqa	16
Beit Chama	2
Haouch Er Rafqa	2
Temnine Et Tahta	4
Chmistar	3
Haouch En Nabi	1
Taraya	4
Serraaïne Et Tahta	2
Serraaïne El Faouqa	5
Talia	1
Nabi Chit	3
Haour Taala	2
Brital	5
Khreibeh	2
Bouday	5
Other	21

## The Online platform to measure the level of risk of the spread of the new Corona virus



This interactive platform allows you to know the level of risk of spreading the kurna virus according to districts, based on the number of cases registered daily and the number of residents in each district. For more information daily, you can access the following link: <https://bit.ly/DRM-RiskLevelInMunicipalities>

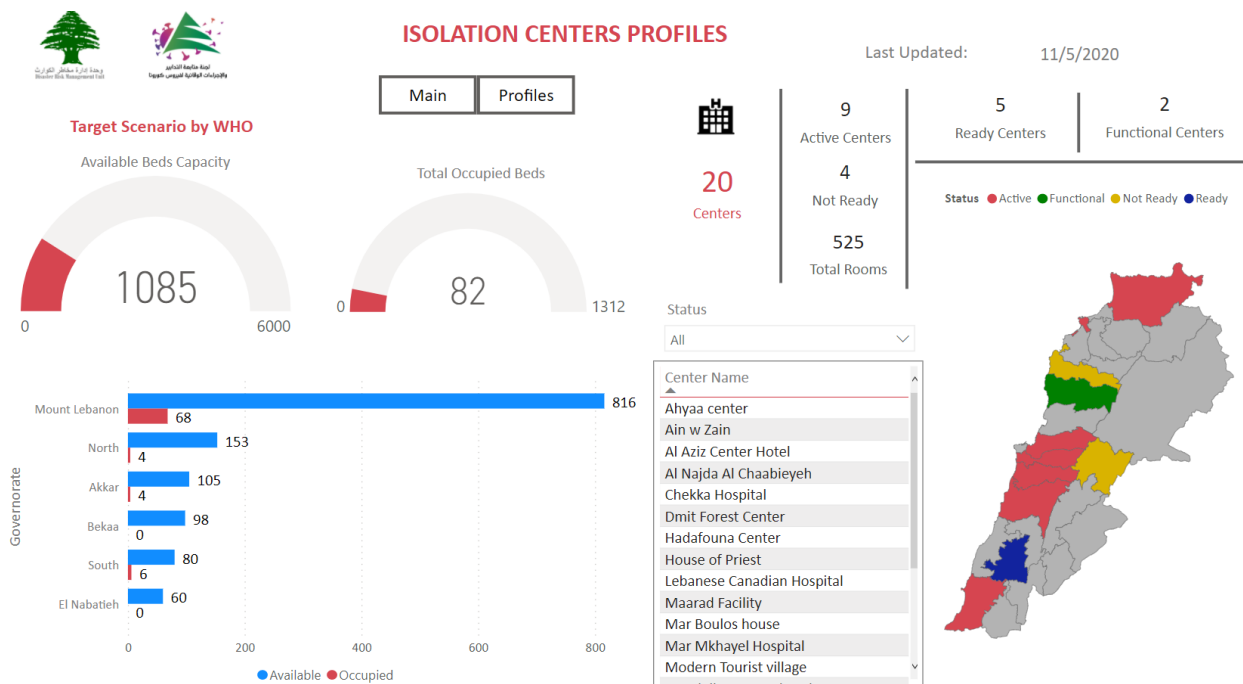
## Online platform to track sector commitment in general mobilization procedures



Based on the recommendation issued by the National Committee for Follow-up of Preventive Measures and Measures to Confront the Coronavirus to open all sectors, provided that the general mobilization procedure (safe distance, muzzle, and hand sterilization) be applied, a special electronic platform was created that allows monitoring and measuring the percentage of commitment by various sectors on an ongoing basis.

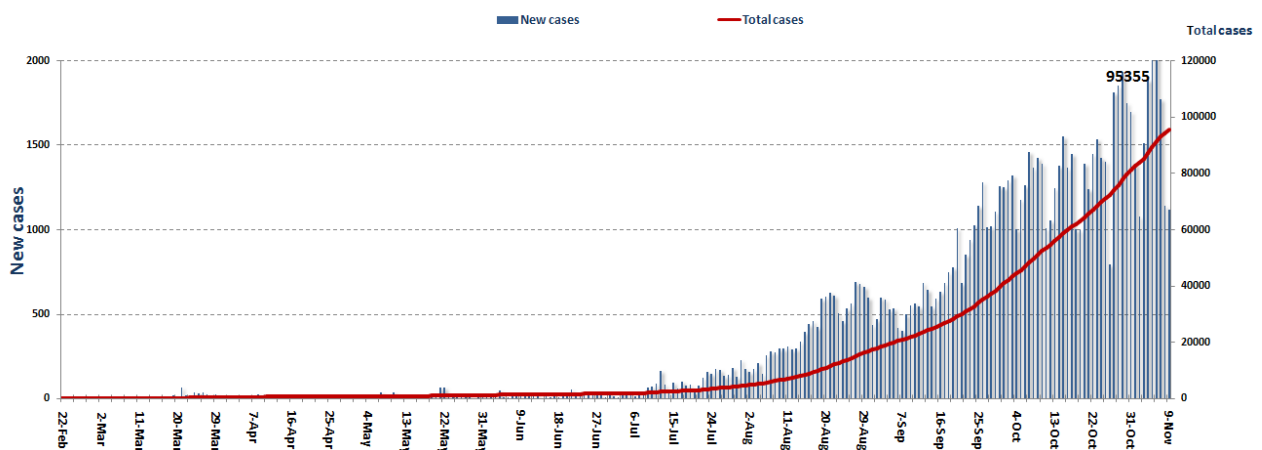
The detailed results can be viewed directly at the following link <http://bit.ly/covidsectordata>

## Occupancy rate of isolation centers for cases infected with Corona virus

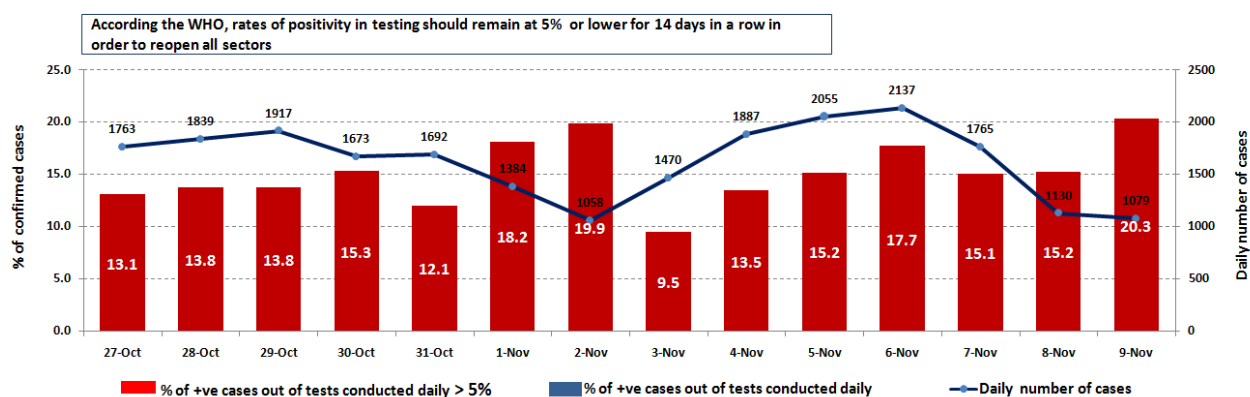


For more information about the isolation centers' distribution and the percentage of their occupancy, enter the following link: <http://bit.ly/DRM-IsolationCentersProfiles>

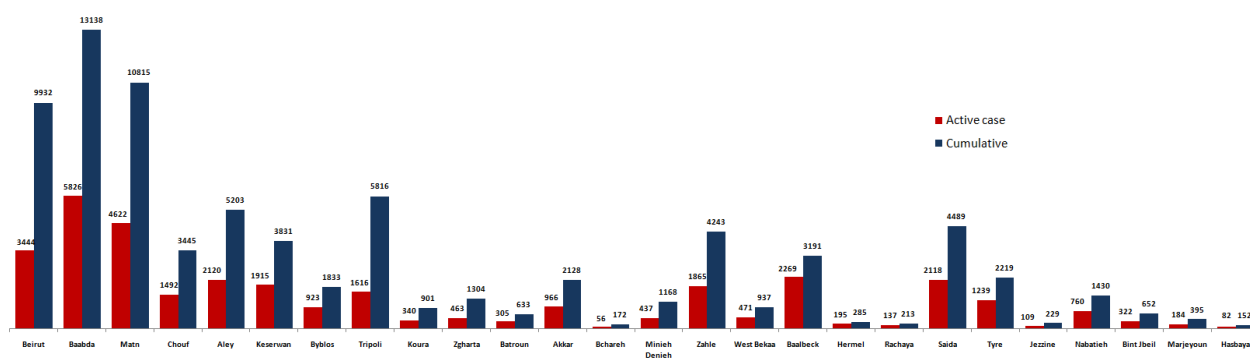
## Cases per day



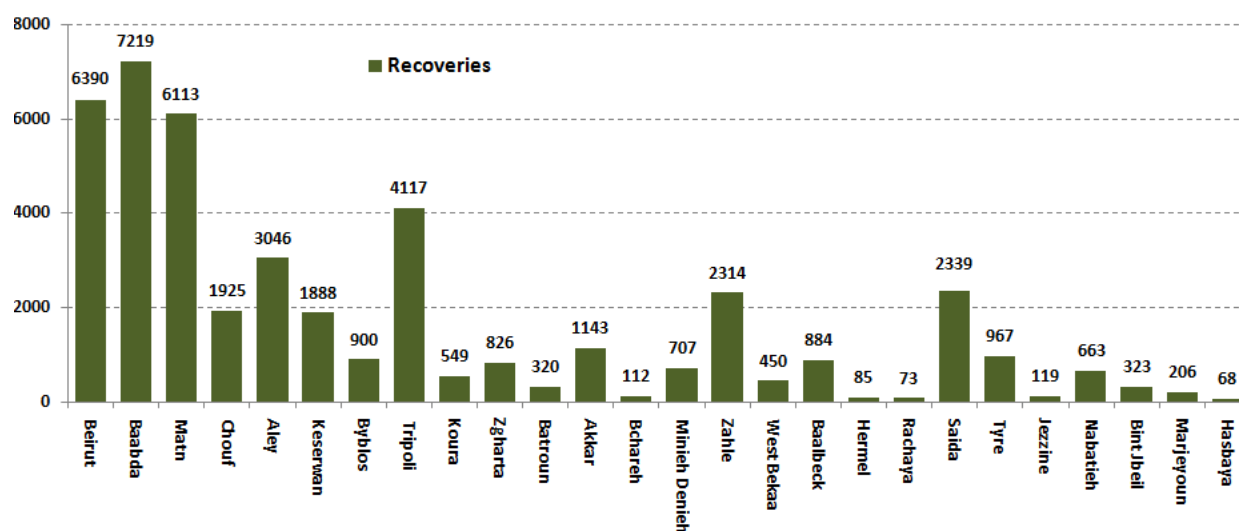
## The percentage of positive cases out of the number of daily checks (27 Oct – 09 Nov 2020)



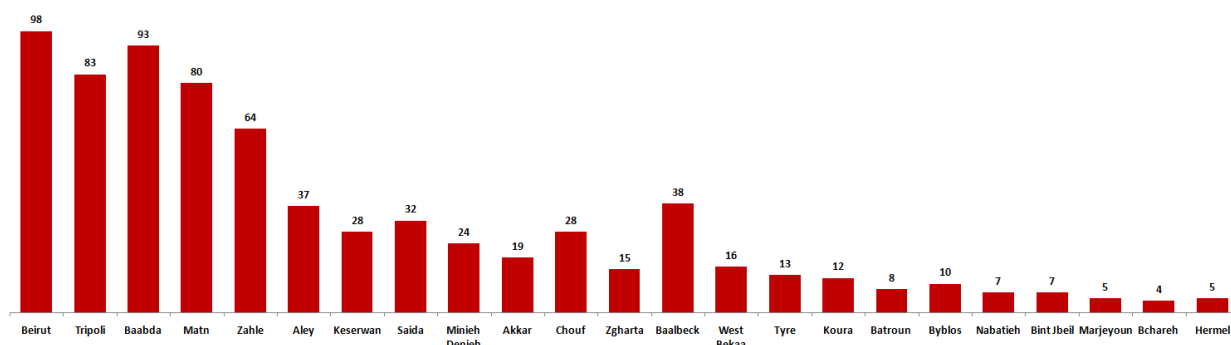
## Distribution of Active Cases by Districts



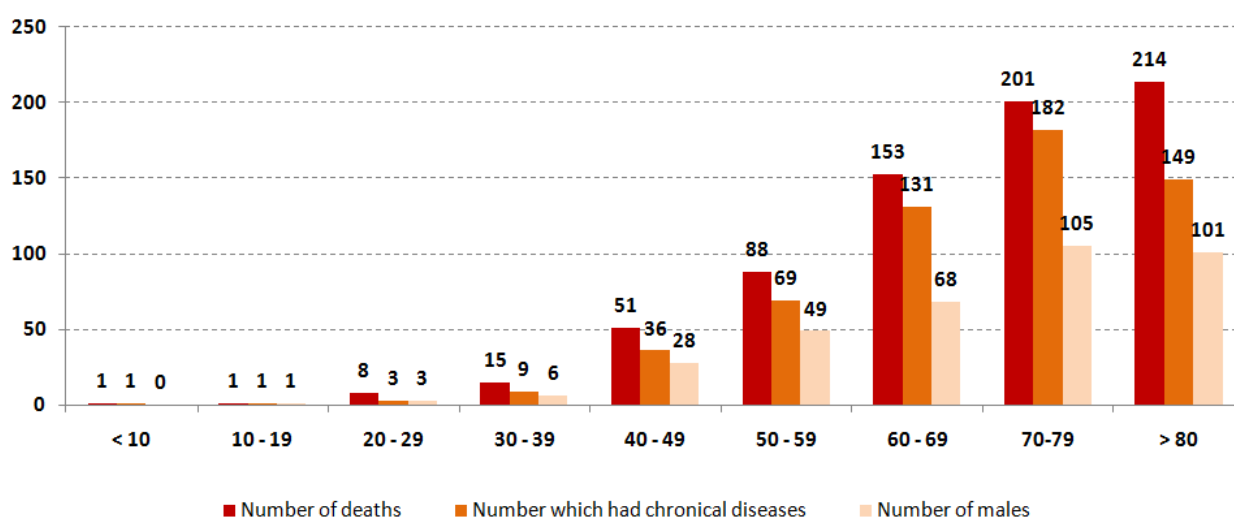
## Recoveries



## Distribution of deaths by Governorates



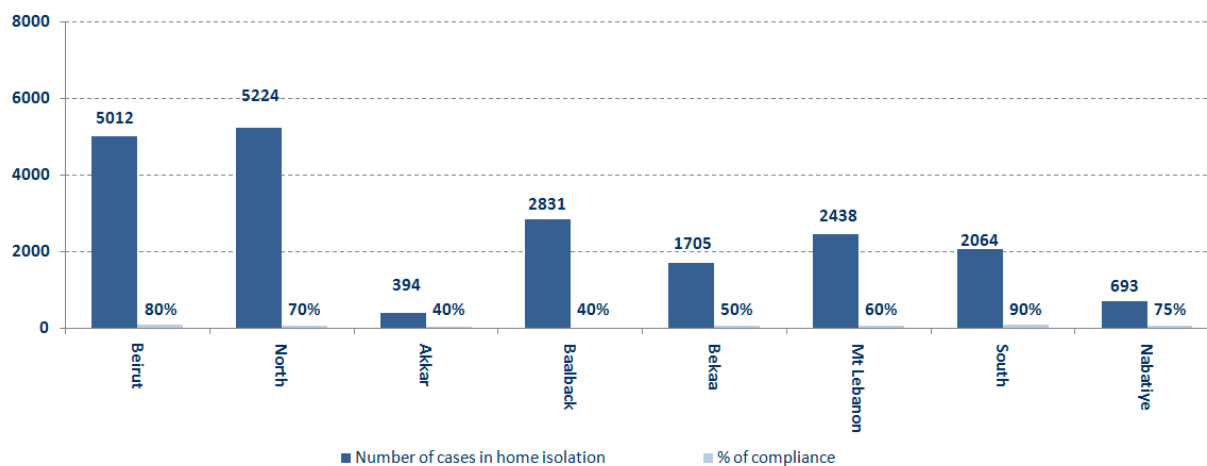
## Distribution of deaths by Age



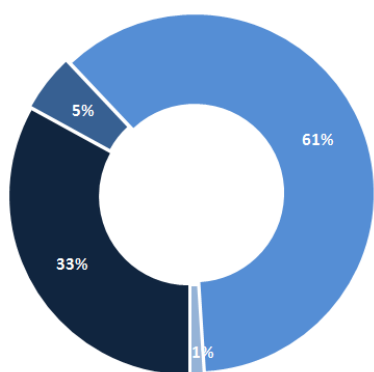
## The distribution of the recorded deaths during the past 24 hours

Hospital	Residence	Gender	Age	Chronic
Saint George	Baabda	Male	42	No
Saint George	Baabda	Male	68	Yes
Saint George	Baabda	Male	59	Yes
Marjeyoun Gov.	Beirut	Female	84	Yes
Ragheb Hareb	Marjeyoun	Female	61	Yes
El Raii	Saida	Female	25	Yes
El Raii	Saida	Female	42	Yes
Herawi Gov.	Baalback	Female	74	Yes
Notre Damme	Batroun	Male	88	Yes

## Number of individuals in home isolation and percentage of commitment to isolation

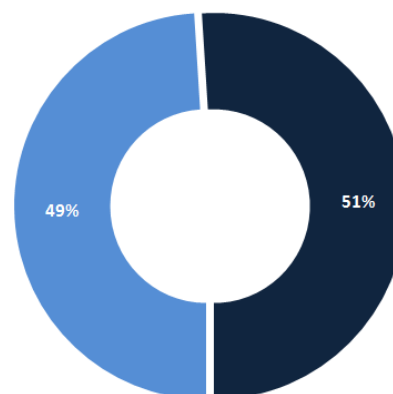


## Exposure



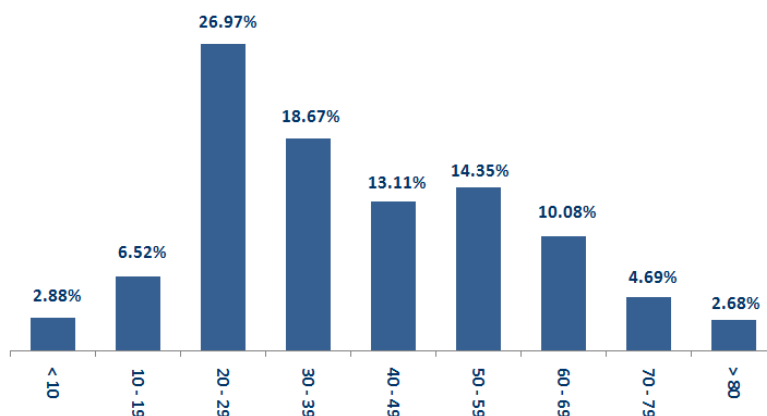
■ Contact with confirmed case ■ Travel related ■ Under investigation ■ Unidentified source

## Distribution according to gender



■ Female ■ Male

## Distribution by age





---

## Decisions and actions taken – 11/09/2020

---



---

### Ministry of Public Health

---

- The Ministry of Public Health has issued the memo #159 dated 6/11/2020 related to the examination of persons in contact with active positive cases and the conditions to release isolated and quarantined cases. Main points of the decision:
  - Identification of the person in contact with an active positive case as the person who was in direct contact with a positive case for at least 10 minutes at 1.5 meters during the last 14 days.
  - The importance of abiding by the duration of 14 days quarantine for all persons in contact with positive cases even if the PCR test is negative.
  - Repeating the PCR within 5 to 7 days if the person in contact feels any symptom.
  - The conditions of home isolation or isolation at identified community center, where the asymptomatic person should be isolated for 10 days and return after to normal life without repeating the PCR test. As for the person who develops symptoms, he should be isolated for 13 days and if in the last 3 days he had symptoms, then be released, and return to normal life without repeating the PCR test.
  - Considering all positive cases after the isolation period non-contagious and resume normal lives while respecting all protective measures.
  - Patients with severe or serious illnesses or immunity deficiency should complete the isolation period for 20 days from the date of the start of symptoms and 72 hours after the high fever and other symptoms have disappeared, and can resume their normal lives without repeating the PCR test.
- The Ministry of Public Health is coordinating with the Central Bank of Lebanon to allocate specific amounts of money for private hospitals to create COVID-19 departments, noting that a specialized committee by the Ministry will visit all hospitals in Beirut and Mount Lebanon to check its logistical setups, which may affect the opening of sections for Corona patients.

---

### Lebanese Red Cross

---

237,429	Number of PCR tests transferred to laboratories	54,562 (11 New)	Number of additional ambulance centers ready to respond	48	ecnalubma sretnec	7,849 (66 New)	sesac ot derrefsnart slatipsoh
166	Number of volunteers trained to transfer PCR tests	1,498	Number of trained paramedics	8,855	latot fo rebmun stnednopser	100,838 (639 New)	fo rebmun esoht morf gnitifeneb ssenerawa *snoisses
967	The number of university volunteers trained to follow up on prevention measures in companies and institutions	291	Number of university volunteers trained to conduct awareness sessions	550	CRL latot sretnulov 19divoc rof	8,752	fo rebmun deniart rof sreganam noitalosi sretnec
4,670 (5 New)	Number of beneficiaries from educational electronic platforms COVID-19	261,826	Number of distributed equipment	1,255,255	latot detubiirtsid posters, brochures, and flyers on covid19 prevention	786	fo rebmun taht snosipr neeb evah detcefnisid

## General Directorate of Internal Security Forces

The number of seizure records during the past 24 hours					The total number of records since 03/08/2020	
Written records of violating institutions (absorptive capacity and preventive measures)				40		
Written records of persons violating the decision to wear a mask				441	Beirut	23159
Written records of people violating the general mobilization decision (Aragil* and social distancing)				474	Mount Leb	24645
<b>Total</b>				<b>995</b>	Begaa	9713
					North	8125
Beirut	Mount Leb	Begaa	North	South	South	8934
189	614	75	20	57	<b>Total</b>	<b>74576</b>

## General Directorate of State Security

-Reporting new cases in the districts.

- Reporting a new case to the General Directorate of State Security, bringing the total number of positive cases to 36.

-Notification of the percentage of compliance with the general mobilization decision in the governorates, which came as follows within the past 24 hours:

Beirut	South	North	Akkar	Begaa	Nabateih	Baalbek Hermel	Mount Leb
17%	39%	33%	42%	65%	50%	25%	45%

## General Directorate of General Security

-Follow up the implementation of the required security and preventive measures at the airport, ports and border crossings.

-Reporting cases registered in the various districts and cases in home quarantine.

- Follow up the implementation of the required security and preventive measures at the airport, ports and border crossings.
- Reporting cases registered in the various districts and cases in home quarantine.

## Ministry of Public Works and Transportation

Departing Flights		Arriving Flights	
Number of Flights	38	Number of Flights	40
Number of Departing Individuals	3798	Number of Arrivals	3,606

Port	Entered			Left		
	Import	Direction	#	Export	Direction	#
Beirut	Corn	Romania	1	Containers	Alexandaria	1
Jbeil	Fuel	Zahrani	1	Fuel	Peru	1
<b>Total</b>	<b>2</b>			<b>2</b>		

---

## General announcements

---

The Ministry of Education and Higher Education announced that lessons would be halted in attendance in official and private educational institutions on Monday and Tuesday, November 9 and 10, 2020, pending the decisions issued by the Supreme Defense Council meeting on Tuesday, provided that education is completed within the two days specified according to the available means and used in each An educational institution, and that schools, institutes, extension centers, and teachers' homes remain open to secure administrative work, taking into account the rotation of attendance among members of the administrative body. The Ministry also affirmed that the official examinations and examinations in higher education institutions should be completed and the Colloquium examinations in attendance, provided that the necessary health measures are taken.

**Note: The decisions can be found at [www.drm.pcm.gov.lb](http://www.drm.pcm.gov.lb)**

---

## Examples of lack of adherence to safety measures

---

Failure of some municipalities to abide by the Ministry of Interior and Municipalities Decision No. 1025/2020 related to the closure of towns that have a high risk of the spread of the epidemic.

- Demand gatherings and demonstrations.
- Failure to comply with the preventive measures and procedures required in several stores and markets (putting on a muzzle or face mask, sterilizing hands, maintaining a safe distance).
- Non-compliance with the 50% occupancy rate in several restaurants and amusement game centers.
- Gatherings for social events.
- Failure of those in contact with confirmed cases to adhere to home isolation procedures until the results of the laboratory tests are issued.

**If you feel any symptoms, call directly the hotline of the Ministry of Public Health: 1214 or 01/594459**

**Laboratories that did not comply with the procedures approved by the MoPH About the information required to be recorded for infected cases within the past 24 hours**

<b>Laboratories that did not specify the Governorate</b>	
<b>Laboratory/Hospitals</b>	<b>Cases</b>
BDH505-Rafic Hariri University hospital	45
BDL002-Hadi Laboratory/ Haret Hreik	26
BRL007 - Doctors Center	6
BDL006 - Beirut International Airport	5
BLH215-Hospital Dar Amal / Baalbeck	4
ZHH231-Hospital Tel Chiha / Zahleh	4
Hospital Saint Georges Orthodoxe / Achrafieh	2
BRL009 - Fontana Laboratories	2
Mashrek Medical Diagnostic Center MDC	2
BDH562-Hospital Mont liban	1
BRH636-Hospital LAU Medical Center / Rizk	1

<b>Number of positive cases without specifying the place of residence</b>	
<b>Laboratory/Hospitals</b>	<b>Cases</b>
BDH505-Rafic Hariri University hospital	45
BDL002-Hadi Laboratory/ Haret Hreik	27
BRL007 - Doctors Center	11
BDH562-Hospital Mont liban	7
BDL006 - Beirut International Airport	5
BLH215-Hospital Dar Amal / Baalbeck	5
ZHH231-Hospital Tel Chiha / Zahleh	4
Hospital Saint Georges / Achrafieh	2
BRL009 - Fontana Laboratories	2
Mashrek Medical Diagnostic Center MDC	2
BRH636-Hospital LAU Medical Center / Rizk	1
SDH418-Hospital Hammoud / Saida	1
Hospital Tripoli Governemental / Qoubeh	1

<b>Number of positive cases without a phone number</b>	
<b>Laboratory/Hospitals</b>	<b>Cases</b>
Hadi Laboratory/ Haret Hreik	5

## A list of the laboratories accredited by the MoPH to conduct PCR tests

### المختبرات الحكومية المؤهلة لإجراء التشخيص المخبري لفيروس كورونا بطريقة الـ RT-PCR

المختبر	الموقع
مستشفى رفيق الحريري الجامعي RHUH	بيروت
مستشفى حيا الحكومي	حيا
مستشفى طرابلس الحكومي	طرابلس
مستشفى البترون الحكومي	البترون
مستشفى فتوح كمروان الحكومي (البوار)	كمروان
مستشفى نبيه بري الحكومي الجامعي	النبطية
مستشفى نينان الحكومي	نينان
مستشفى بنت جبيل الحكومي	بنت جبيل
مستشفى بعلبك الحكومي	بعلبك
مستشفى الرئيس الياز اليراي الحكومي	زحلة

### مختبرات المستشفيات العسكرية

بيروت	المستشفى العسكري المركزي في بيروت Hôpital Militaire Central
-------	---

### المختبرات المؤهلة لأخذ عينات "المسحات الأنفية" بطريقة Drive- thru

مختبر ميديكال دياغنوستيك تريتمانت سنتر (الحمراء)	بيروت
Medical Diagnostic Treatment Center (MDTC)	بيروت
مختبر ميد لاب MedLab SAL CIC ALS (الحمراء - الجفيلور)	بيروت
مختبرات عيتاني Itani Medical Laboratories (المزرعة)	بيروت
مختبر أ ب سي ABC Laboratories	الأشرفية
مختبرات معوض الطبية Mouawad Medical Laboratory	التياج
مختبرات الشياح (د. فؤاد ربحان) Rihan Medical Center	التياج
مختبر إكسبرت لاب Expert Lab	المنصورة
مختبر لايف لاب Life LAB	بعلبك
مستشفى الرياق Riyak Hospital	رياق

المختبرات الخاصة المؤهلة لإجراء التشخيص المخبري لفيروس كورونا بطريقة الـ RT-PCR

المختبر	الموقع
AUBMC مستشفى الجامعة الأميركية	بيروت
Hotel-Dieu de France (HDF) مستشفى أوتيل ديو الجامعي	بيروت
مختبرات رودولف ميرييو (الجامعة اليسوعية – المتحف)	بيروت
Laboratoire Rodolphe Mérieux (Université Saint-Joseph)	بيروت
Saint-George Hospital - UMC مستشفى القديس جاورجيوس الجامعي	بيروت
Makassed General Hospital مستشفى المقاصد	بيروت
LAU Medical Center - Rizk Hospital مستشفى رزق الجامعي	بيروت
Hôpital Libanais Geitawi - CHU مستشفى اللبناني الجعيتاوي الجامعي	بيروت
Hôpital Notre-Dame du Rosaire مستشفى الوردية	بيروت
Doctor 's Center مختبر مركز الأطباء	بيروت
Fontana Laboratories مختبر فونتانا (الحمرا)	بيروت
مختبر الأمن العام (العنablية)	بيروت
Laboratoire Jabre-Ghorra مختبرات جبر وغرة	بيروت
Saint Marc Medical & Diagnostic Center مختبر السان مارك	بيروت
Laboratoire Moderne (Modern Lab- Berjaoui) المختبرات الحديثة	الغيري
Sahel General Hospital (SGH) مستشفى الساحل	الغيري
مستشفى الزهراء الجامعي	الغيري
Al Zahraa Hospital - UMC مستشفى الرسول الأعظم	برج الزراة
مستشفى بهمن	حارة حريك
Al Rassoul Al Aazam Hospital Bahman Hospital	حارة حريك
مختبر ناتيونال دياغنوسيك سرفيس كومباني	حارة حريك
National Diagnostic Services Company (NDSC)	حارة حريك
Medical Diagnostic Center مختبر الدكتور محمود عثمان - مركز التحاليل الطبية	المرجة
American Diagnostic Center (ADC) مختبر أميركن دياغنوسيك سنتر	الزجاج
Mount Lebanon Hospital مستشفى جبل لبنان	بعنا
Hôpital Saint-George – Hadath مستشفى السان جورج الحدث	بعنا
Al Hadi Laboratory مختبر الهادي	بعنا
INOVIE-Liban مختبر	بعنا

Hôpital du Sacré- Coeur مستشفى قلب يسوع	الحازمية
Clinigene مختبر كلينيجان	الحازمية
Hôpital Dr.Samir Serhal مستشفى سرحال	المن
Transmedical for Life مختبر ترانسميديكال فور ليف	المن
Haroun Hospital مستشفى هارون	الزلفا
Bellevue Medical Center (BMC) مستشفى بلفو	المنصورة
Hôpital Albert Haykal مستشفى هيكال	الكورة
Centre Hospitalier du Nord (CHN) مركز الشمال الإمشفاني	زغرتا
Mazloum Hospital مستشفى المظلوم	طرابلس
Al Mounla Hospital مستشفى المنلا	طرابلس
Nini Hospital مستشفى النيني	طرابلس
مختبر ميكروبيولوجيا الصحة والبيئة LMSE – المعهد العالي للدكتوراء، الجامعة اللبنانية	طرابلس
CHU - Notre-Dame des Secours مستشفى سيدة المعونات الجامعي	جبل
Lab Akiki & Boulos مختبر عقيقي وبولس	جبل
Centre Médical Wakim مختبر واكيم	حونية
Ain Wazein Hospital مستشفى عين وزين	الشوف
Hammoud Hospital UMC مستشفى حمود الجامعي	صيدا
Al Karim Medical Laboratory (KML) مختبر الكريم	صيدا
Sheikh Ragheb Harb Hospital مستشفى الشيخ راعب حرب	البيشة
Sabbah Diagnostic Center (SDC) مختبر الصباح	البيشة
Jabal Amel Hospital مستشفى جبل عامل	صور
Mashrek Diagnostic Center (MDC) مختبر المشرق	صور
Dar Al Amal University Hospital مستشفى دار الأمل الجامعي	بعلبك
Khoury General Hospital مستشفى خوري	زحلة
Medical Care Center (MCC) مختبر ميديكال كير سنتر	زحلة