





Lebanon National Operations Room Daily Report on COVID-19

Thursday, October 08, 2020

Report #204

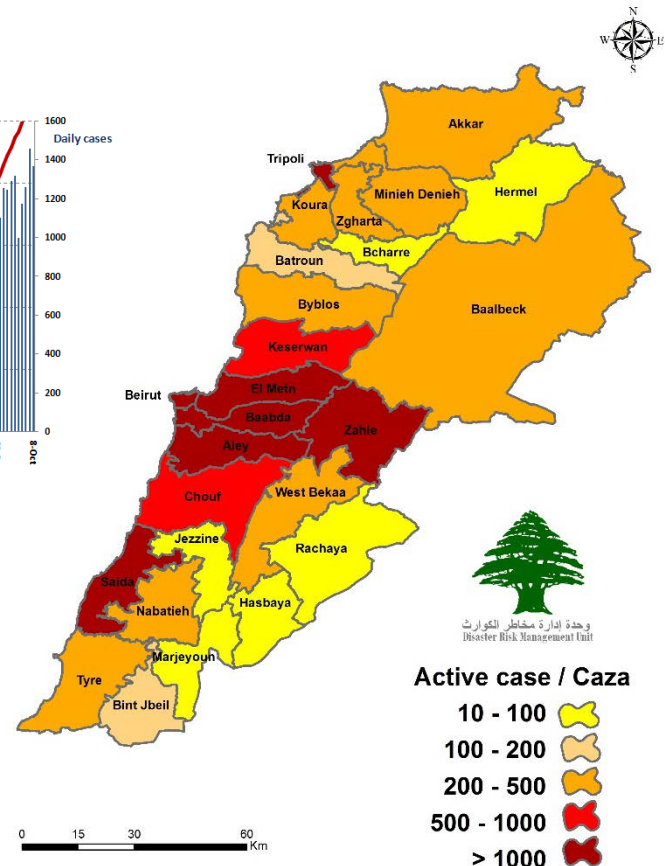
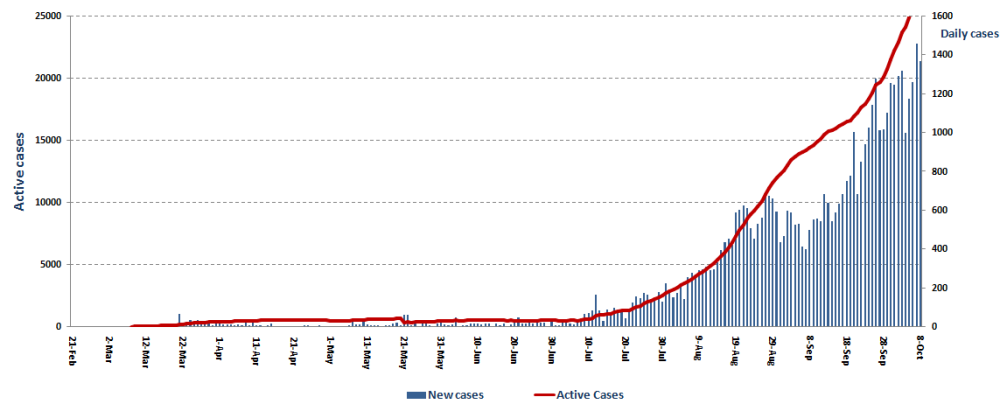
Time Published: 10:30 PM

1,367 New Cases		49,744 Total Cases since 21.2.2020		439 Total Deaths		21,625 Total Recovered	
1,362 Residents	5 Expats	48,012 Residents	1,732 Expats	6 New Deaths		545 New Recovered	
1,147 Total Cases in the Health Sector		27,680 Total Active Cases		640 Hospitalized Cases		171 Total Cases in ICU	
17 New Cases in the Health Sector		27,040 Cases in Home Isolation		469 Mild Cases		4 New Cases in ICU	
888,258 COVID-19 Tests since 21.2.2020		Lebanon Status compared to the World					
504 COVID-19 Tests at Airport within 24 hrs.		13,758 COVID-19 tests for residents within 24 hrs.		Total Cumulative		49,744	
				Total Deaths		439	
				Deaths percentage		0,88%	
				Total recoveries		21,625	
						36,587,018	
						1,063,444	
						2.9%	
						27,545,077	

Ref: Ministry of Public Health Data

Number of Cases by Location

- 8,895 case is Under investigation



Beirut	146
Ein Mreisseh	1
Ras Beirut	4
Manara	1
Qreitem	1
Raouche	5
Hamra	13
Ein Teeneh	3
Mseitbeh	6
Mar Elias	4
Tallet Al Khayyat	3
Dar Al Fatwa	2
Sanayeh	1
Zarif	1
Mazraa	10
Borj Abi Haidar	2
Basta Al Fawka	1
Tariq Al Jdeedeh	20
Ras Al Nabaa	16
Basta Tahta	2
Gemmaizeh	1
Jeitawi	1
Mar Michael El Nahr	1
Jesr	1
Ashrafieh	19
Others	27
Aley	71
Al Amrousieh	5
Hay El Sillom	12
Khaldeh	2
Choueifat Al Oumara	12
Deir Qoubel	1
Aramoun	15
Baawarta	1
Bshamoun	10
Bleibel	1
Aley	2
Ein Hala	1
Ghabon	1
Ein Al Jdeedeh	1
Aitat	1
Baysour	1
Aabayh	1
Rweisat Saoufar	1
Others	3
Western Beqaa	10
Jeb Jennin	2
Kamed El Loz	1
Ghazze	1
Sultan Yaakoub	1
Manara (Hammara)	1
Sweiry	1
Sohmor	1
Marej	1
Rawda (Istabel)	1
Jezzine	6
Kfarhouana	1
Baysour	1
Hassanieh	2
Bayhan	1
Others	1

Baabda	204
Chiah	34
Jnah	9
Ouzai	6
Bir Hassan	7
Ghobeiry	3
Ein Al Rimmaneh	6
Forn El Shubbak	2
Haret Hreik	22
Lailaki	11
Borj Al Barajneh	24
Mreijeh	9
Tahweetet Al Ghadir	5
Baabda	6
Hazmieh	6
Hadat	33
Loueize	1
Jumhour	2
Kfarshima	1
Wady Shahrou	1
Ein Mowaffak	1
Rweiset Al Ballout	2
Arayya	1
Others	12
Chouf	36
Damour	1
Saadiyat	1
Naameh	2
Baal Al Naameh	1
Haret Al Naameh	2
Meshref	1
Chhim	3
Mazboud	2
Ketermaya	2
Aanout	1
Barja	3
Jiyyeh	1
Jadra	2
Wady Al zayne	1
Semqaniyyeh	1
Beshteffeen	1
Kfarheem	1
Baaqleen	1
Baqaata	1
Niha	1
Btalloun	3
Barouk	2
Others	2
Byblos	30
Byblos	4
Mastita	1
Blat	4
Amshit	3
Halat	1
Hosrayel	2
Nahr Ibrahim	1
Innaya	1
Abaydat	1
Hboub	6
Qartaba	1
Others	5

Zahleh	127
Rassieh	1
Hoch Al Oumara	2
Mar Elias	1
Forzol	9
Ablah	2
Qaa Al Rim	4
Niha	1
Ksara	3
Wadi Al Arayesh	1
Jlala	2
Makseh	3
Taalabaya	20
Jdita	2
Taanayel	4
Saadnayel	8
Qab Elias	11
Bouarej	1
Bar Elias	19
Majdel Anjar	8
Riyak	1
Qousaya	1
Reet	1
Terbol	1
Kfarzabad	4
Others	17
Kserwan	32
Sarba	2
Zouk Michael	2
Ghaadir	3
Zouk Mosbeh	3
Adonis	2
Sahel Alma	2
Kfar Yassine	1
Adma & Dafneh	1
Safra	1
Bouar	1
Ajaltoun	3
Ballouneh	1
Jeita	1
Fatqa	1
Chnaniir	1
Mayssra	1
Zaytoun	1
Reifoun	1
Qleiaat	1
Ashkout	1
Feitroun	1
Hrajel	1
Baalbek	10
Baalbek	1
Doures	1
Nahle	1
Labwe	1
Qasr Nabba	1
Temnin Al Tahta	1
Shmestar	1
Others	3

Matn	120
Borj Hammoud	15
Nabaa	1
Sin El Fil	7
Jdeidet Al Metn	3
Ras Al Jadeedeh	1
Bouchrieh	6
Dora	3
Rawda	5
Sed Al Bouchrieh	2
Sabtieh	2
Deir Mar Roukoz	1
Dekwene	13
Antelias	2
Manqlet Mezher	1
Jal El Dib	3
Naqqash	2
Zalka	5
Byaqout	1
Bellview	1
Dbayyeh	8
Aoukar	1
Mansouriyeh	8
Fanar	3
Roumieh	2
Bsalim	4
QornetChehwan	1
Rabweh	1
Beit Al Chaar	2
Deek Al Mahdi	1
MazraetYashouh	1
Bekfayya	1
Ein Alak	1
Broummana	2
Beit Merry	1
Monteverde	1
Zahrieh	1
Mtein	1
Choueir	1
Others	5
Saida	102
Old Saida	1
Saray	1
Bramieh	2
Hlalieh	5
Qayyaaa	1
Miyeh W Miyeh	6
Ein El Helwe	9
Majdlyoun	13
Aabra	6
Qrayyeh	13
Bqosta	1
Ein Al Delb	1
Ghazieh	1
Khrayeb	1
Bablieh	1
Sarafand	6
Aaktaneet	1
Arky	1
Others	32

Tyre	27
Bass	1
Rasheedieh	1
Borj Al Chemali	4
Deir Qanoun Ein	1
Yanouh	1
Maarakeh	1
Maaroub	1
Seddeeqeen	2
Ein Baal	1
Bazourieh	1
Tora	1
Abbasieh	2
Qleileh	1
Others	9
Koura	11
Bsorma	1
Kosba	1
Reshdebbine	1
Anfeh	1
Ras Masqa	2
Dahr Al Ein	1
Barsa	3
Others	1

Zghorta	29
Zghorta	11
Rasheen	1
Erdeh	3
Majdlayya	4
Aalma	2
Bshannin	1
Darayya	1
Qozhayya	1
Meryata	1
Others	4
Nabatieh	17
Al Bayyad	1
Shoukeen	2
Habbouch	1
Jbaa	1
Zefta	1
Mazraet Al Bayyad	1
Nmeiriyyeh	1
Harouf	1
Ansar	2
Qseibeh	1
Qaaqaaiyyet Al Jesr	1
Kfar Seer	1
Others	3

Menyeh Duniyyeh	32
Nabe Youshaa	2
Menyeh	4
Sir Dunniyyeh	1
Nemrein	2
Beit Al Faqs	2
Sfeereh	8
Ezal	2
Qmameen	1
Kfar Habo	2
Bakhoun	2
Others	6
Bcharre	1
Abdeen	1
Bint Jbeil	2
Bint Jbeil	1
Kherbet Silim	1
Marjeyoun	2
Debbeen	1
Deir Meemas	1
Hasbayya	3
Hasbayya	2
Hebbarieh	1

Akkar	31
Halba	1
Dora	1
Karam Assfour	1
Borj Al Arab	2
Old Akkar	2
Bebnin	1
Abdeh	2
Berqayel	1
Houeish	1
Jdeidet Qaytaa	1
Fneidek	3
Majdala	1
Aidamoun	2
Qobayyat	9
Wady Khaled	1
Others	2
Rashayya	3
Aiha	1
Dahr Al Ahmar	1
Kfar Qouq	1
Hermel	2
Hermel	1
Al Dora	1

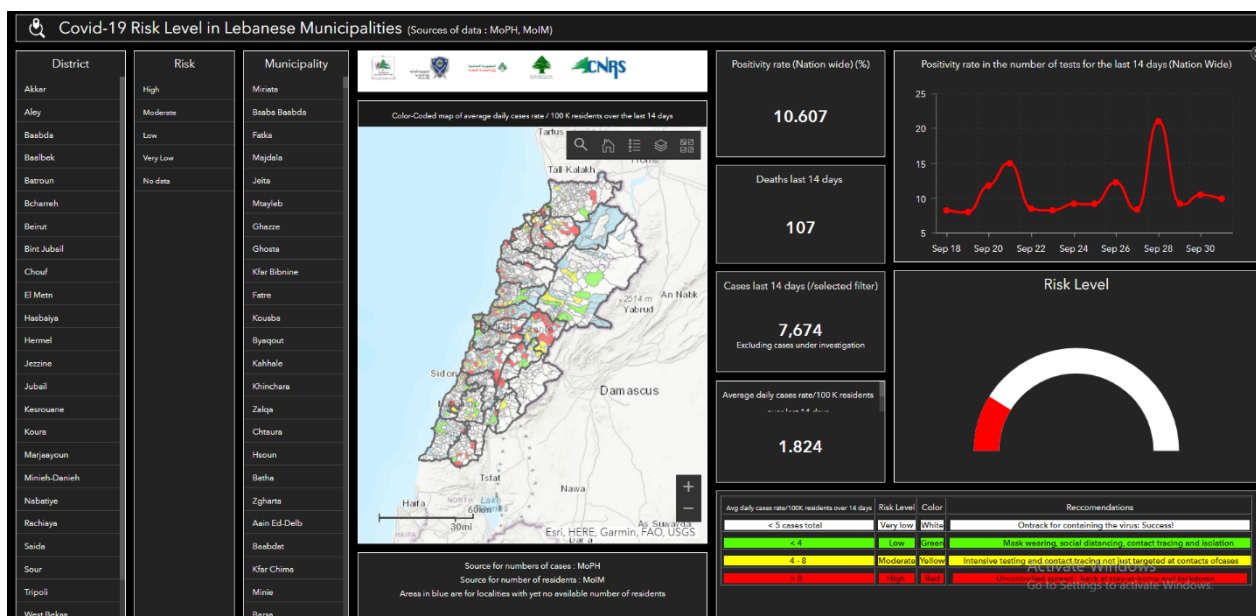
Others	236
--------	-----

The number of beds available for those infected with Coronavirus and the occupancy rate



For daily information on all the details of the bed distribution available for Covid-19 patients in the various governorates according to the hospitals:
 Computer: <https://bit.ly/DRM-HospitalsOccupancy-PC>
 By phone: <https://bit.ly/DRM-HospitalsOccupancy-Mobile>

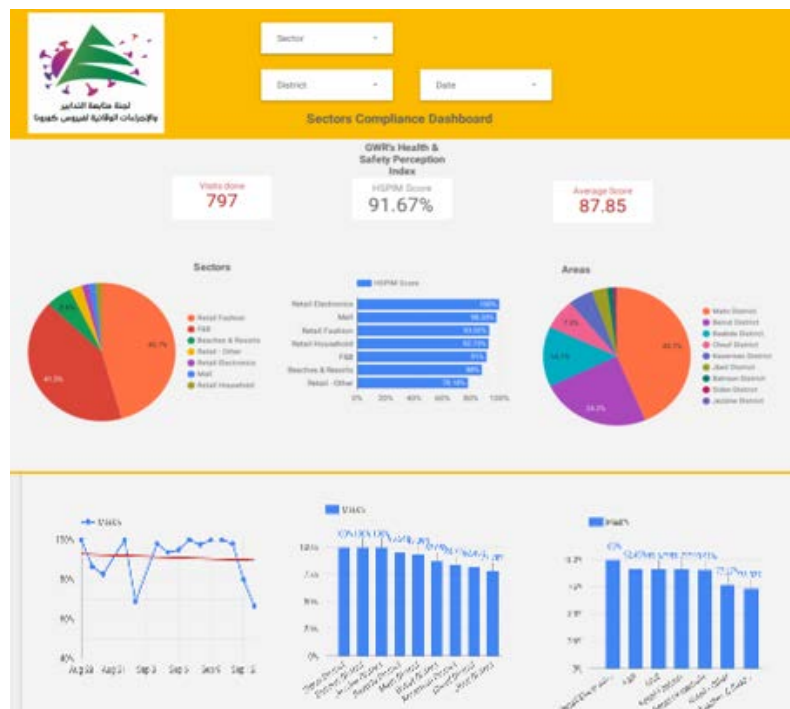
The Online platform to measure the level of risk of the spread of the new Corona virus by district



This interactive platform allows you to know the level of risk of spreading the kurna virus according to districts, based on the number of cases registered daily and the number of residents in each district. For more information on a daily basis, you can access the following link:

<https://bit.ly/DRM-RiskLevelInMunicipalities>

Online platform to track sector commitment in general mobilization procedures

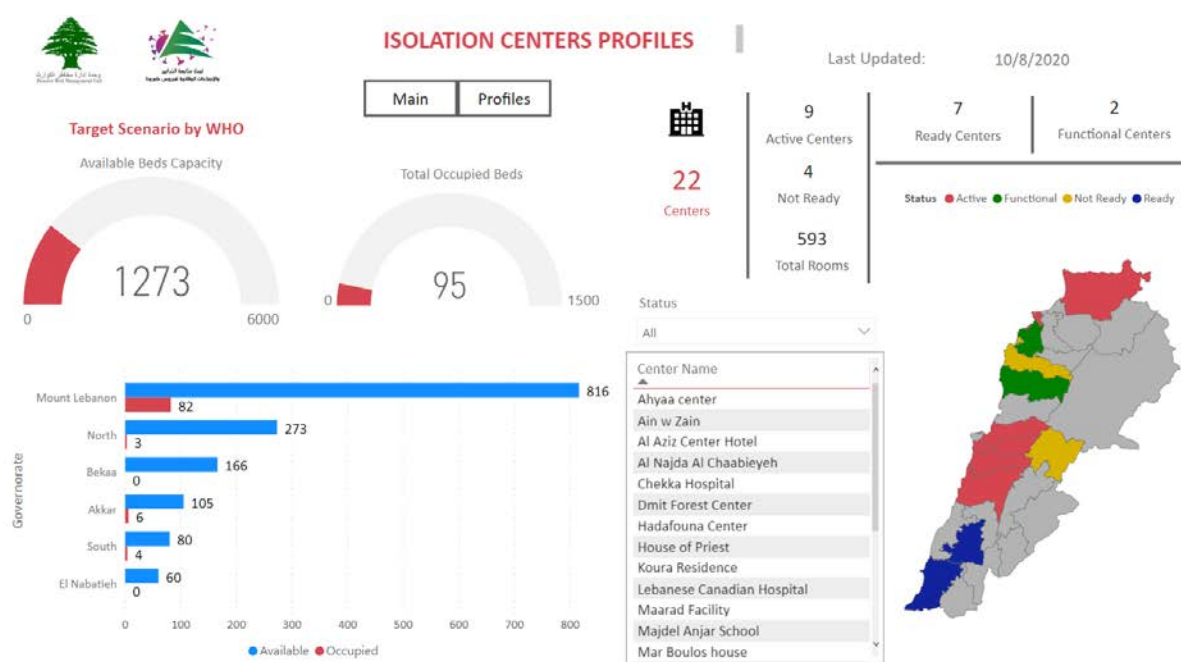


Based on the recommendation issued by the National Committee for Follow-up of Preventive Measures and Measures to Confront the Coronavirus to open all sectors, provided that the general mobilization procedure (safe distance, muzzle, and hand sterilization) be applied, a special electronic platform was created that allows monitoring and measuring the percentage of commitment by various sectors on an ongoing basis.

The detailed results can be viewed directly at the following link:

<http://bit.ly/covidsectordata>

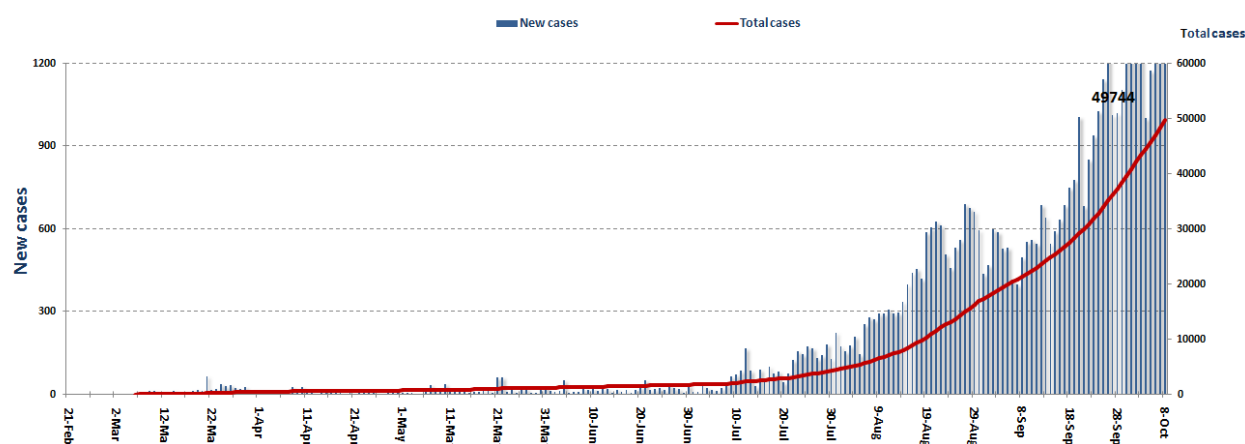
Occupancy rate of isolation centers for cases infected with Coronavirus



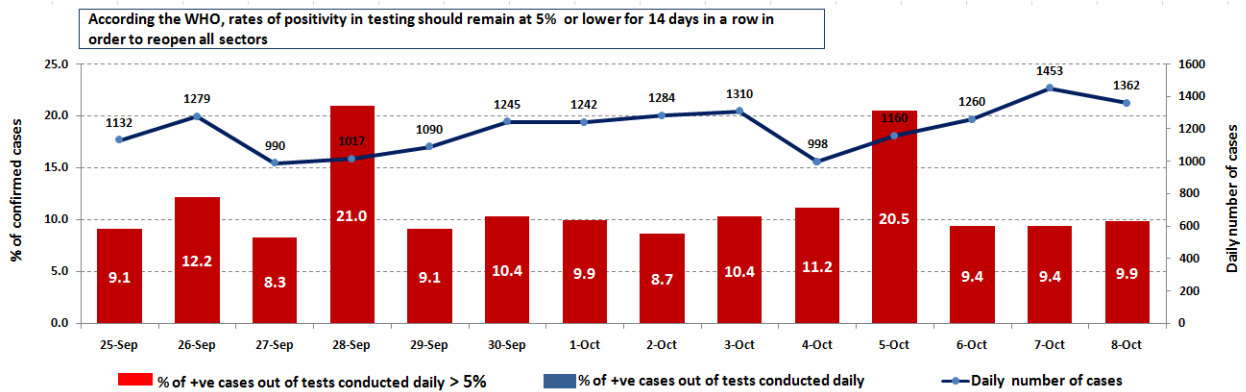
For more information about the isolation centers' distribution and the percentage of their occupancy, enter the following link: <http://bit.ly/DRM-IsolationCentersProfiles>

Note: These centers have been equipped in cooperation between the National Committee for Follow-up of Preventive Measures and Measures to Confront the Coronavirus and Governors and Municipalities, the United Nations Development Program, the World Health Organization, UNICEF, the Ministry of Public Health, the Syndicate of Nurses in Lebanon and the Syndicate of Specialists in Social Work.

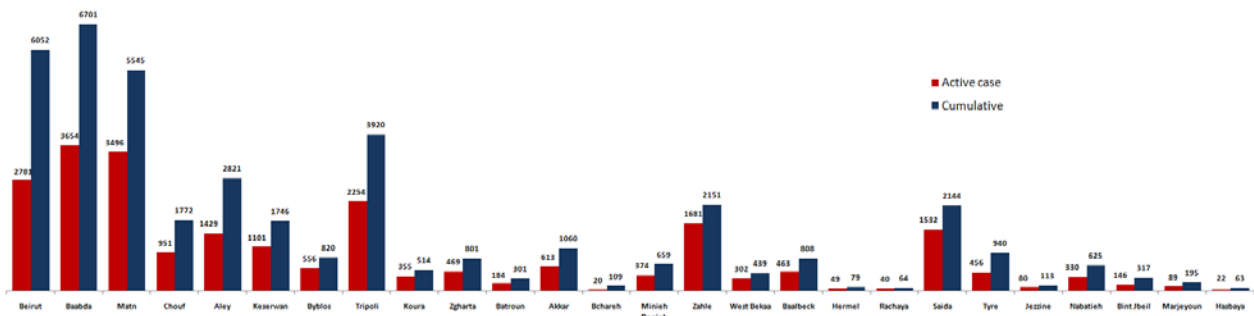
Cases per day



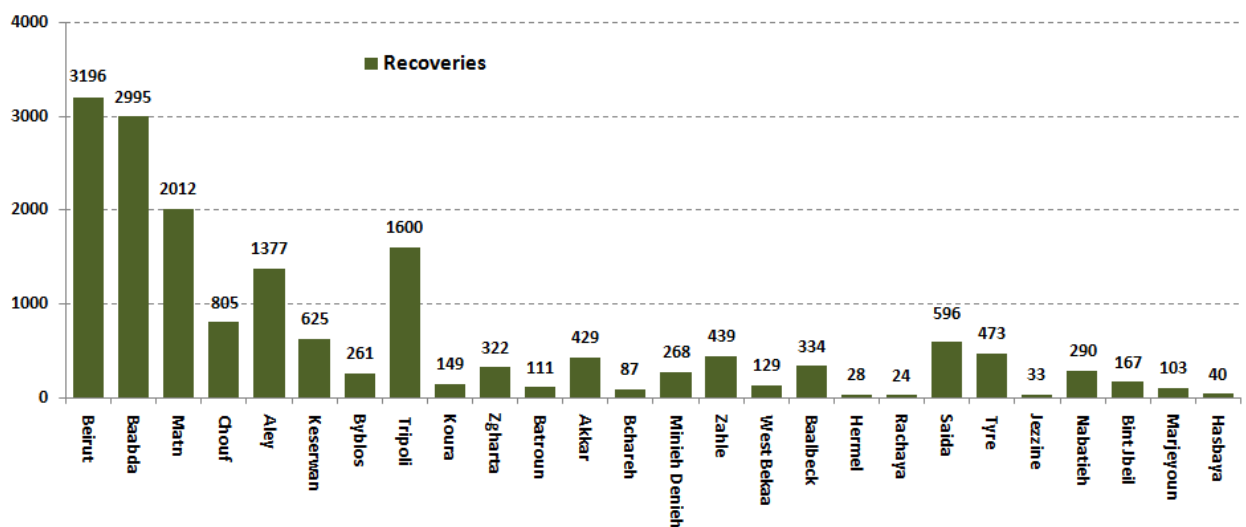
The percentage of positive cases out of the number of daily checks (25 September to 08 October 2020)



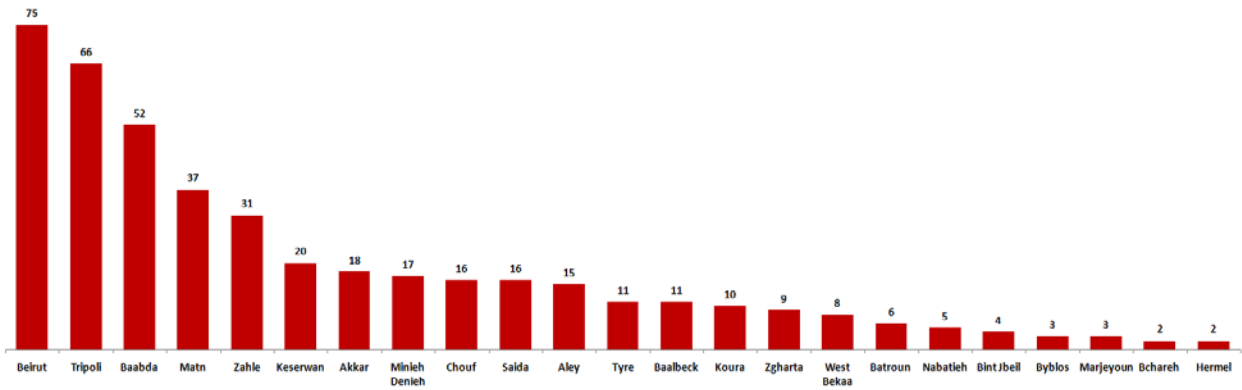
Distribution of Active Cases by Districts



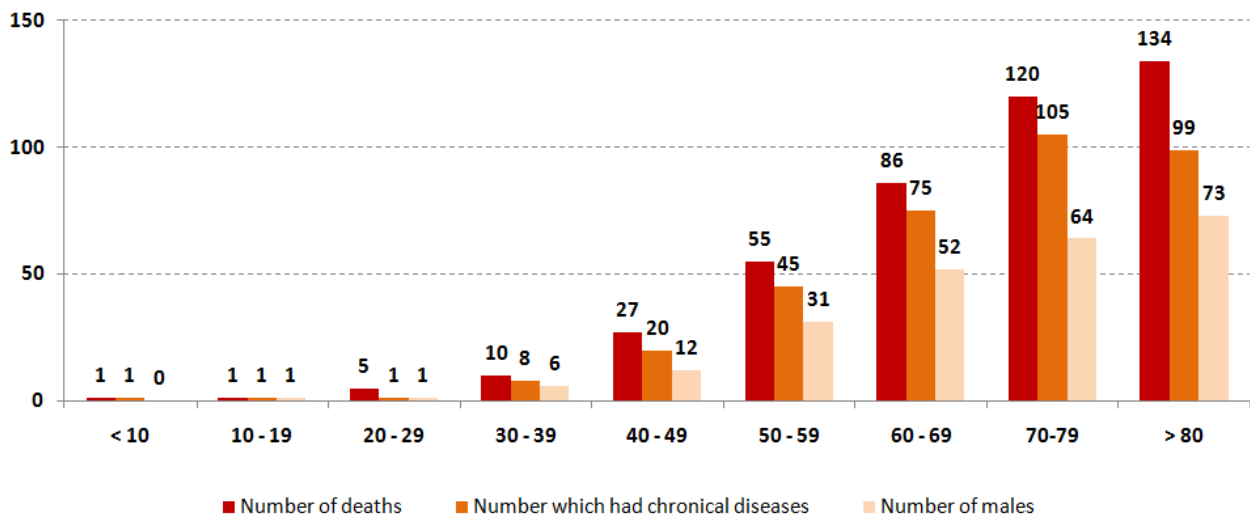
Recoveries



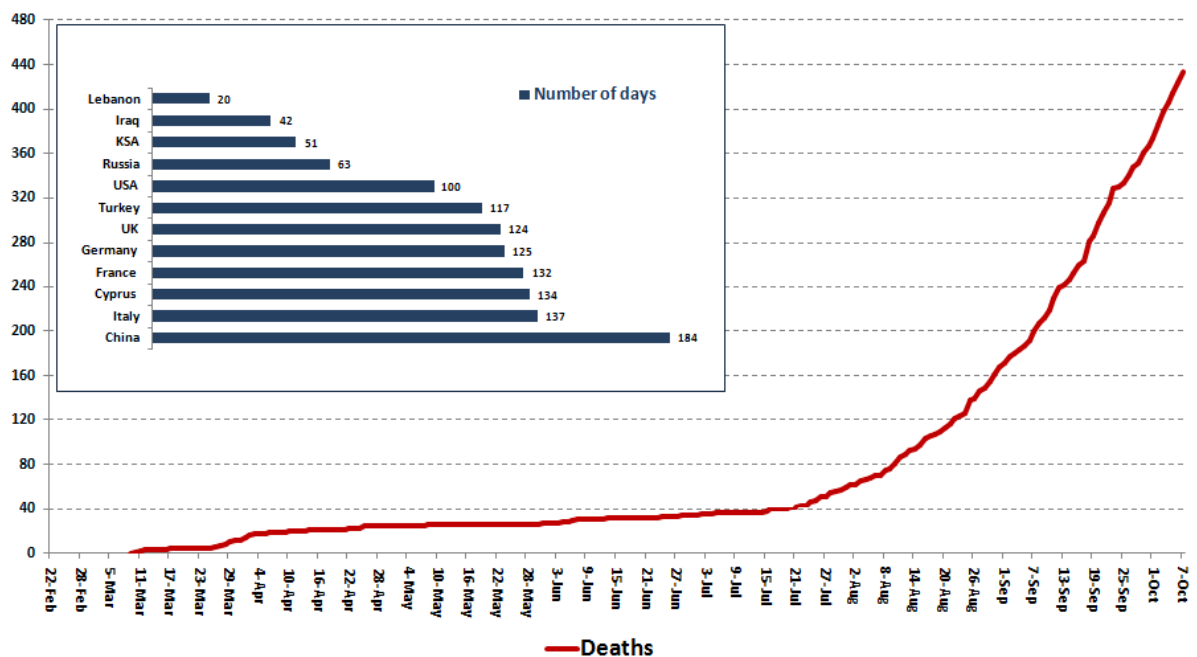
Distribution of deaths by Governorates



Distribution of deaths by Age



Comparison of the rate of doubling of the number of deaths in Lebanon with other countries (death doubling rate)

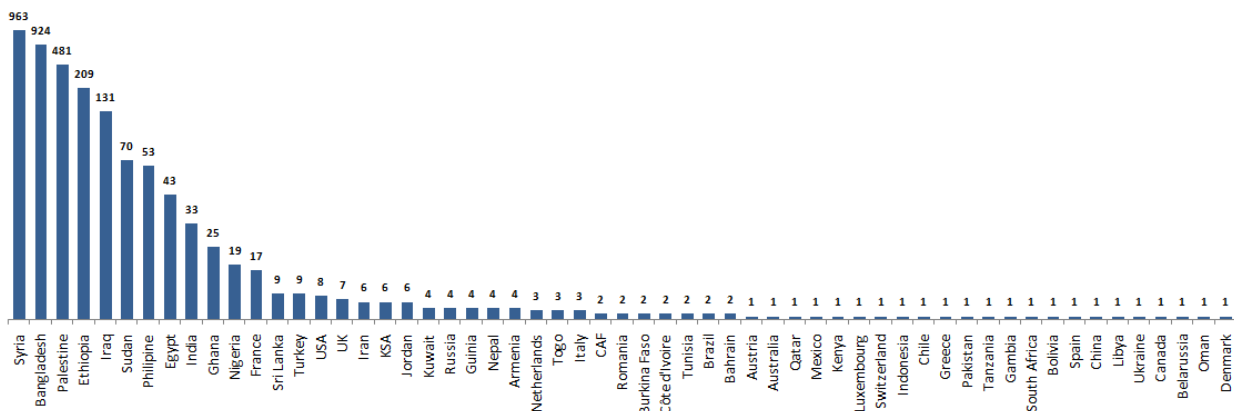


The distribution of the recorded deaths during the past 24 hours

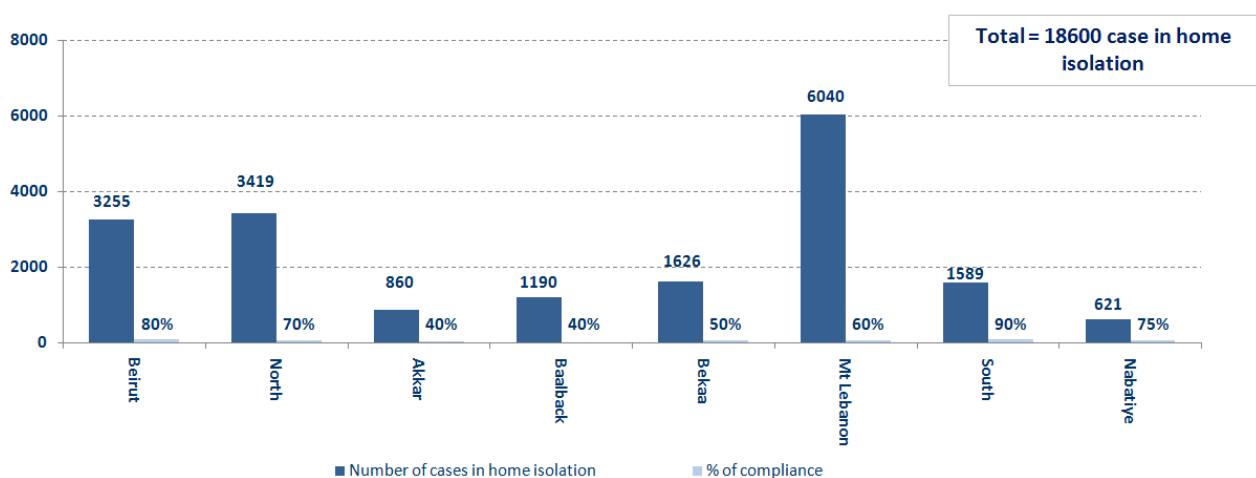
Hospital	Residence	Gender	Age	Chronic
Home	Zahle	Male	64	Yes
Harire Gov.	Beirut	Female	65	Yes
Mount Lebanon Hos.	Maten	Male	83	Yes
AUBMC	Beirut	Female	47	Yes
Lebanese French Hos	West Bekaa	Female	83	Yes
Baalback Gov.	Zahle	Female	76	Yes

Distribution of cases by nationality

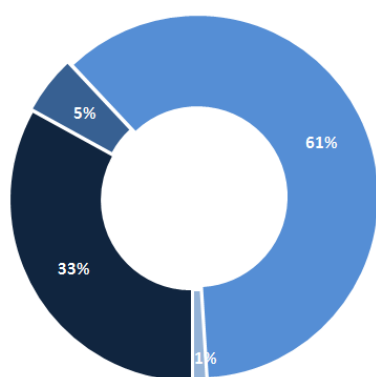
Lebanese : 45365 cases out of 49744 (88%)



Number of individuals in home isolation and percentage of commitment to isolation

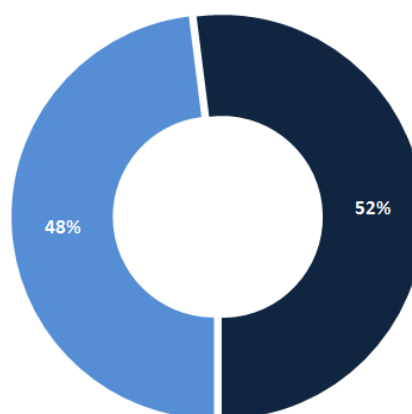


Exposure



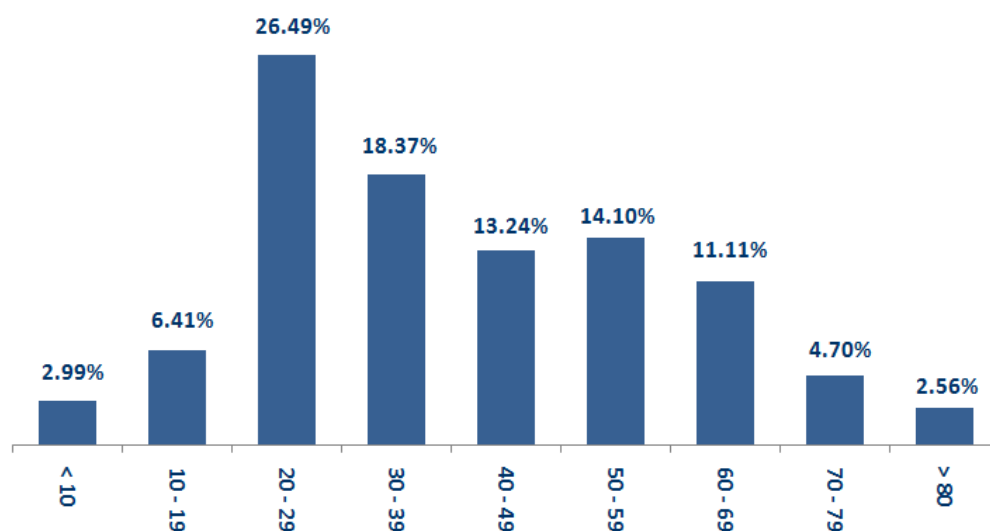
■ Contact with confirmed case ■ Travel related ■ Under investigation ■ Unidentified source

Distribution according to gender



■ Female ■ Male

Distribution by age



Decisions and actions taken – 08/10/2020

Ministry of Public Health

The Ministry of Public Health announced a plan to increase the number of intensive care beds in government hospitals, which were divided into three phases:

- The first phase: increasing the number of beds in seven government hospitals in Beirut, Mount Lebanon and the North, where the number of injuries is increasing dramatically, over a period of between one week and ten days, in conjunction with the continuation of the field examination campaigns.
- The second stage: increasing the number of beds in the south and western Bekaa within a period not exceeding three weeks.
- The third stage: Increasing the hospitals' capacity to receive Corona patients within six weeks

The Ministry of Public Health reported that PCR tests were completed for flights that arrived in Beirut and were conducted at the airport on 10/4/2020, in addition to the first batch of flight checks that arrived in Beirut on 10/5/2020, where five (5) new positive cases were recorded. It was distributed over the following trips:

Arriving from	Company	Flight Number	Number of Positive Cases
No Cases in 4/10/2020			
5/10/2020			
Adana	PEGASUS	6700	2
Al Najaf	Iraqi Airways	139	3
Total			5

Lebanese Red Cross

234,025	Number of PCR tests transferred to laboratories	47,812 (47 New)	Number of additional ambulance centers ready to respond	48	ambulance centers	5,986 (53 New)	cases transferred to hospitals
166	Number of volunteers trained to transfer PCR tests	1,498	Number of trained paramedics	8,732	total number of respondents	79,896 (53 New)	number of those benefiting from awareness *sessions
967	The number of university volunteers trained to follow up on prevention measures in companies and institutions	291	Number of university volunteers trained to conduct awareness sessions	550	total LRC volunteers for covid19	8,580	number of trained managers for isolation centers
4,251 (3 New)	Number of beneficiaries from educational electronic platforms COVID-19	95,058	Number of distributed equipment	1,240,431	total distributed posters, brochures, and flyers on covid19 prevention	593 (6 New)	number of prisons that have been disinfected

General Directorate of the General Security of Lebanon

Reporting that some citizens violated the home isolation procedures, despite their confirmation of their infection with the virus and their lack of cooperation with the municipalities to identify contacts.

- The notification of an administrative memorandum issued by the mayor of Jezzine requiring the closure of the Governmental Serail in Jezzine for a period of one day on October 8, 2020 after it was proven that an employee was injured. Reporting the closure of the car registration department in Zahle by a decision of the Bekaa governor, due to the infection of the authority's head of the virus
- Reporting the closure of the office of the Land Registry Keeper in Saraya Jeb Jenin by a decision of the Governor of the Bekaa until 10/14/2020 due to an employee being injured.
- Reporting the commitment of the municipalities to the decision of the Minister of Interior and Municipalities:

Municipalities that abided by the decision	Municipalities didn't abide the decision
-Bekaa: Ra'it, Kfar Zabad, Hosh Halan, Terbol, Niha, Qaa Al Reem, Saadnayel, Aammiaq, Bar Elias, Chtoura, and Mashghara. -Mount Lebanon: Bhamdoun, Azounieh, Kahhale, Souk El Gharb, Ain Dara. -Akkar: Kobayat, Sheikh Taba, Majdala. Baalbek: Shmtar	-Bekaa: Rayak, Gaza, Mansoura, Khirbet Qanfar. -Mount Lebanon: Zaarouriyeh, Anout, Shehim, and Barja. -Marjayoun: Al-Saqi camels. -Batroun: Chekka, Hamat

General Directorate of State Security

- Reporting the closure of official departments due to employees having been proven injured.
- Reporting two new injuries to the General Directorate of State Security, bringing the total number of cases to 58.
- Notification of the percentage of compliance with the general mobilization decision in the governorates, which came as follows within the past 24 hours:

Beirut	South	North	Akkar	Begaa	Nabateih	Baalbek Hermel	Mount Leb
45%	55%	60%	42%	40%	65%	5%	54%

General Directorate of Internal Security Forces

- Supporting the municipalities in isolating the town of Aramoun (Aley), the Radisson Hotel in Ain Mreisse (Beirut) and the Golden Tulip Hotel in Hamra (Beirut)
-
- Writing arrest records against violators of the general closure decision

The number of seizure records during the past 24 hours					The total number of records that have been organized against violators of the general mobilization decisions since 03/08/2020		
Written records of violating institutions (absorptive capacity and preventive measures)				0			
Written records of persons violating the decision to wear a mask				0			
Written records of people violating the general mobilization decision (Aragil* and social distancing)				21			
Total				21		Beirut	20,646
						Mount Leb	18,898
						Beqaa	8,077
						North	6,867
Beirut	Mount Leb	Beqaa	North	South	South	6,931	
0	24	0	10	11	Total	61,419	

Ministry of Public Works and Transportation

Departing Flights		Arriving Flights	
Number of Flights	30	Number of Flights	34
Number of Departing Individuals	3,198	Number of Arrivals	2,637

Port	Entered			Left		
	Import	Direction	#	Export	Direction	#
Tripoli				Blank	Roumania	1
Chekka				Blank	Malta	1
Saida	Metals	Tripoli	1			
Total			1			2

General announcements

The Committee on Follow-up of Preventive Measures and Procedures to Confront the Coronavirus, in its meeting on 7/10/2020, issued the following recommendations:

The start of the academic year 2020-2021 through blended, partial and progressive education, starting 10/12/2020 for the ninth, eleventh and twelfth grades in academic education and their equivalent in vocational education, provided that the rest of the grades are gradually followed up according to a program established by the Ministry of Education and Higher Education .

Amending Circular of the Ministry of Public Works and Transport

- General Directorate of Civil Aviation No. 52/2 on 9/21/2020 and canceling the clause requiring passengers coming from Iraq, except for Lebanese and foreigners residing in Lebanon, to have a prepaid hotel reservation for 72 hours in one of the specified hotels. Provided that the cases coming from Iraq will be tracked by the Ministry of Public Health in cooperation with the Ministry of Foreign Affairs and Expatriates and the Iraqi Embassy in Lebanon. Close all nightclubs, discotheques and bars until further notice, according to the development of the epidemiological reality

- The Ministry of Public Health, in cooperation with the Ministry of Interior and Municipalities, activated the IMPACT platform to track positive cases and circulate them to all accredited laboratories to conduct PCR tests.
- Determining the towns with the standard high daily casualty rate on a weekly basis, if they are covered by the closure decision issued by the Ministry of Interior and Municipalities for a week.
- Excluding the food and industry sectors, institutions working in the field of fuel and gas distribution, and establishments operating in the distribution of drugs and cables to Lebanon from the closure decision issued in the decision of the Ministry of Interior and Municipalities
- The Ministry of Labor issued a circular to all official and private institutions not to take any administrative or behavioral measures against workers residing in the towns covered by the closure decision.
- The Committee on Follow-up of Preventive Measures and Procedures to Confront the Coronavirus Invites all Media to cooperate in order to develop an awareness plan on the dangers of Coronavirus in coordination with NGOs and clerics.

The Ministry of Interior and Municipalities issued Decision No. 1205 on 10/2/2020 related to the closure of some villages and towns due to their high number of Coronavirus cases, as the decision kept on working at the time of preventing exit and entering the streets and roads between the first hour after midnight until the hour Six o'clock in the morning, the decision also included the closure of **111 towns** in various Lebanese regions based on an analysis of the epidemiological situation in them for a full week, starting from **Sunday 10/4/2020** until **10/12/2020** with specifying exceptions and the implementation mechanism for implementing the decision in cooperation between governors, municipalities and all security agencies.

Note: The decisions can be found at www.drm.pcm.gov.lb

Examples of lack of adherence to safety measures

- Demand gatherings and demonstrations.
- Failure to comply with the preventive measures and procedures required in a number of stores and markets (putting on a muzzle or face mask, sterilizing hands, maintaining a safe distance).
- Non-compliance with the 50% occupancy rate in several restaurants and amusement game centers.
- Gatherings for social events.
- Failure of those in contact with confirmed cases to adhere to home isolation procedures until the results of the laboratory tests are issued.

A list of the laboratories accredited by the MoPH to conduct PCR tests

المختبرات الحكومية المؤهلة لإجراء التشخيص المخبري لفيروس كورونا بطريقة الـ RT-PCR

الموقع	المختبر
بيروت	مستشفى رفيق الحريري الجامعي RHUH
حلبا	مستشفى حلبا الحكومي
طرابلس	مستشفى طرابلس الحكومي
البترون	مستشفى البترون الحكومي
كسروان	مستشفى فتوح كسروان الحكومي (البوار)
البقعة	مستشفى نبيه بري الحكومي الجامعي
تلين	مستشفى تلين الحكومي
بنت جبيل	مستشفى بنت جبيل الحكومي
بعلبك	مستشفى بعلبك الحكومي
زحلة	مستشفى الرئيس الياس الهراوي الحكومي

مختبرات المستشفيات العسكرية

بيروت	المستشفى العسكري المركزي في بيروت Hôpital Militaire Central
-------	---

المختبرات المؤهلة لأخذ عيّات "المسحات الأنفية" بطريقة Drive- thru

بيروت	مختبر ميديكال دياغنوستيك تريمالت سنتر (الحمراء) Medical Diagnostic Treatment Center (MDTC)
بيروت	مختبر ميد لاب MedLab SAL CIC ALS (الحمراء – الجفيلور)
بيروت	مختبرات عيتاني Itani Medical Laboratories (المزرعة)
الأشرفية	مختبر أ ب سي ABC Laboratories
الشياح	مختبرات معوض الطبية Mouawad Medical Laboratory
الشياح	مختبرات الشياح (د. فؤاد ربحان) Rihan Medical Center
المنصورة	مختبر إكسبرت لاب Expert Lab
بعلبك	مختبر لايف لاب Life LAB
رياق	مستشفى الرياق Riyak Hospital

المختبرات الخاصة المؤهلة لإجراء التشخيص المخبري لفيروس كورونا بطريقة الـ RT-PCR

الموقع	المختبر
بيروت	مستشفى الجامعة الأميركية AUBMC
بيروت	مستشفى أوتيل ديو الجامعي (HDF) Hotel-Dieu de France
بيروت	مختبرات رندولف ميريو (الجامعة اليسوعية – المتحف) Laboratoire Rodolphe Mérieux (Université Saint-Joseph)
بيروت	مستشفى القديس جاورجيوس الجامعي Saint-George Hospital - UMC
بيروت	مستشفى المقاصد Makassed General Hospital
بيروت	مستشفى رزق الجامعي LAU Medical Center - Rizk Hospital
بيروت	مستشفى اللبناني الجعيتاوي الجامعي Hôpital Libanais Geitawi - CHU
بيروت	مستشفى الوردية Hôpital Notre-Dame du Rosaire
بيروت	مختبر مركز الأطباء Doctor 's Center
بيروت	مختبر فونتانا (الحمرا) Fontana Laboratories
بيروت	مختبر الأمن العام (العناتية)
بيروت	مختبرات جبر وغرة Laboratoire Jabre-Ghorra
بيروت	مختبر السان مارك Saint Marc Medical & Diagnostic Center
الغبري	المختبرات الحديثة Laboratoire Moderne (Modern Lab- Berjaoui)
الغبري	مستشفى الساحل Sahel General Hospital (SGH)
الغبري	مستشفى الزهراء الجامعي
برج الزاجنة	مستشفى الرسول الأعظم Al Zahraa Hospital - UMC
حارة حريك	مستشفى بهمن Bahman Hospital
حارة حريك	مختبر ناتيونال دياغنوستك سرفيس كومباني National Diagnostic Services Company (NDSC)
البرجة	مختبر الدكتور محمود عثمان - مركز التحاليل الطبية Medical Diagnostic Center
الجناب	مختبر أميريك دياغنوستك سنتر American Diagnostic Center (ADC)
بعنا	مستشفى جبل لبنان Mount Lebanon Hospital
بعنا	مستشفى السان جورج الحدث Hôpital Saint-George – Hadath
بعنا	مختبر الهادي Al Hadi Laboratory
بعنا	مختبر INOVIE-Liban

الحازمية	مستشفى قلب يسوع Hôpital du Sacré- Coeur
الحازمية	مختبر كلينوجان Clinigene
المن	مستشفى سرحال Hôpital Dr.Samir Serhal
المن	مختبر ترانس ميدكال فور ليف Transmedical for Life
الزلفا	مستشفى هارون Haroun Hospital
المنصورة	مستشفى بلغو Bellevue Medical Center (BMC)
الكورة	مستشفى هيكال Hôpital Albert Haykal
زغرتا	مركز الشمال الإستشفائي Centre Hospitalier du Nord (CHN)
طرابلس	مستشفى المظلوم Mazloum Hospital
طرابلس	مستشفى المنلا Al Mounla Hospital
طرابلس	مستشفى النيني Nini Hospital
طرابلس	مختبر ميكروبيولوجيا الصحة والبيئة LMSE - المعهد العالي للدكتوراه، الجامعة اللبنانية
جبل	مستشفى سيدة المعونات الجامعي CHU - Notre-Dame des Secours
جبل	مختبر عقيقي وبولس Lab Akiki & Boulos
جونية	مختبر واكيم Centre Médical Wakim
الشوف	مستشفى عين وزين Ain Wazein Hospital
صيدا	مستشفى حمود الجامعي Hammoud Hospital UMC
صيدا	مختبر الكريم Al Karim Medical Laboratory (KML)
البيشة	مستشفى الشيخ راجب حرب Sheikh Ragheb Harb Hospital
البيشة	مختبر المباح Sabbah Diagnostic Center (SDC)
صور	مستشفى جبل عامل Jabal Amel Hospital
صور	مختبر المشرق Mashrek Diagnostic Center (MDC)
بعلبك	مستشفى دار الأمل الجامعي Dar Al Amal University Hospital
زحلة	مستشفى خوري Khoury General Hospital
زحلة	مختبر ميديكال كير سنتر Medical Care Center (MCC)