



Lebanon National Operations Room

Daily Report on COVID-19



Sunday, November 08, 2020

Report #235

Time Published: 10:30 PM

New in the report:

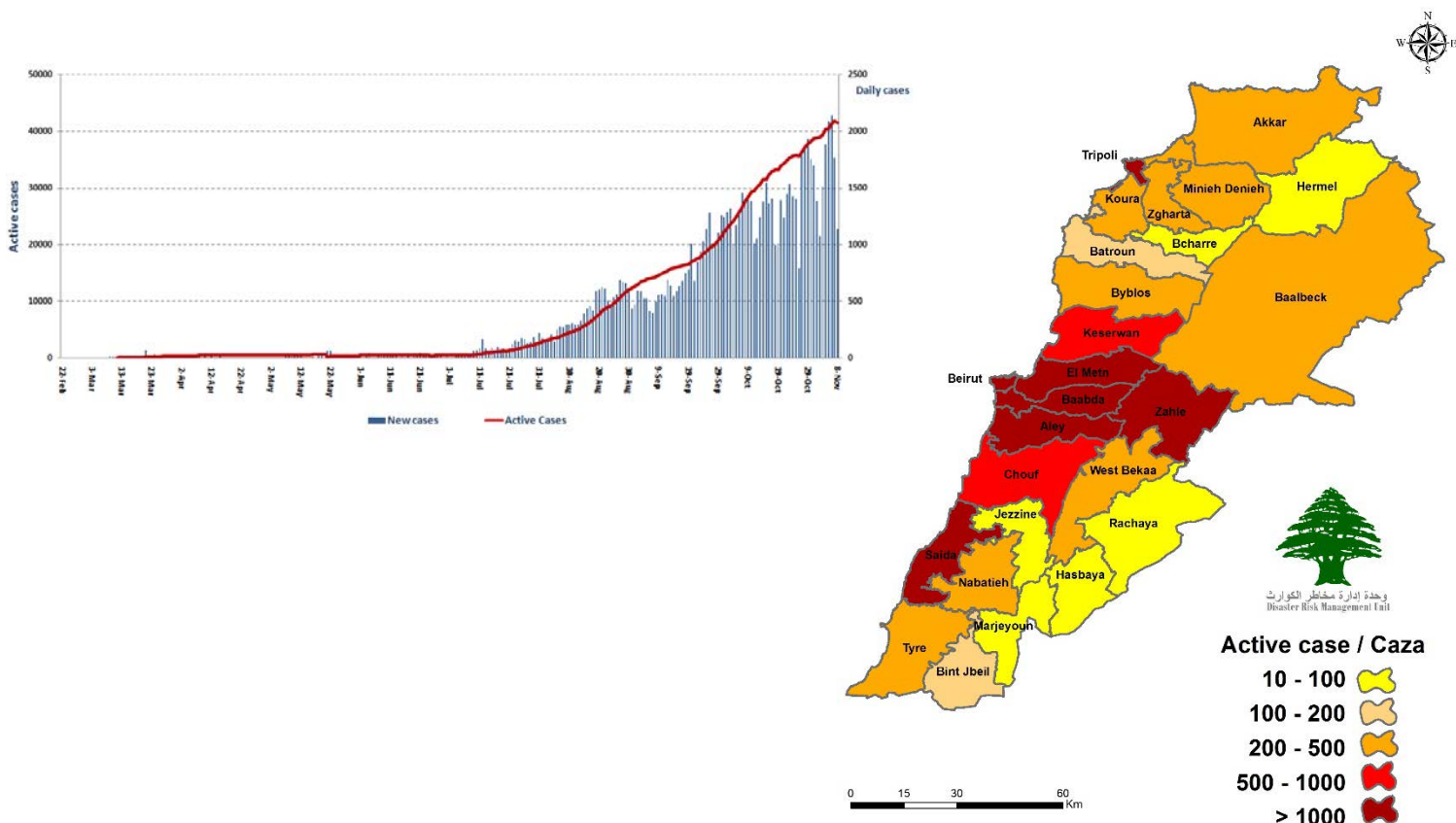
- The Ministry of Education announced the suspension of public education on Monday and Tuesday 9 and 10 October 2020 pending the issuance of the Supreme Defense Council's decision

1,139 New Cases		94,236 Total Cases since 21.2.2020		723 Total Deaths		51,728 Total Recovered			
1,130 Residents	9 Expats	91,761 Residents	2,475 Expats	10 New Deaths		1,344 New Recovered			
253 Deleted Status due to its recurrence		1,502 Total Cases in the Health Sector		41,785 Total Active Cases		797 Hospitalized Cases			
15,2% Positivity rate		13 Cases in the Health Sector		40,988 Cases in Home Isolation		135 Ventilated Cases	8 New Cases in ICU	287 Total cases in ICU	510 Mild cases
1,269,984 COVID-19 Tests since 21.2.2020				Lebanon Status compared to the World					
1,067 COVID-19 Tests at Airport within 24 hrs.		7,414 COVID-19 tests for residents within 24 hrs.		Total Cumulative		94,236		50,515,504	
				Total Deaths		723		1,259,346	
				Deaths percentage		0,76%		2.49%	
				Total recoveries		51,728		35,672,491	

Ref: Ministry of Public Health Data

Number of Cases by Location

- 16,447 case is Under investigation



Beirut	88
Ain El Mraisseh	4
Ras Beyrouth	6
Manara	1
Qreitem	2
Raoucheh	1
Hamra	7
Ain Et Tineh	1
Msaitbeh	1
Mar Elias	3
Zarif	5
Mazraa	4
Borj Abou Haidar	3
Basta El Faouqa	2
Tariq Ej Jdideh	8
Ras En Nabaa	4
Basta Et Tahta	6
Gemmaizeh	1
Achrafiyeh	16
Aadlyeh	2
Others	11
Baabda	157
Chiyah	8
Jnah	8
Ouzaai	6
Bir Hassan	4
Madineh Riyadiyeh	1
Ghbayreh	3
Ain Er Roummaneh	6
Furn Ech Chebbak	1
Haret Hreik	29
Laylakeh	4
Borj El Brajne	30
Mreijeh	4
Tahouitat El Ghadir	3
Baabda	4
Hazmiyeh	3
Fayadiyeh	2
Rihaniyeh	1
Yarzeh	1
Hadath	27
Jamhour	1
Kfar Chima	1
Bsaba	2
Ain Mouaffaq	1
Ras El Matn	2
Salima	1
Others	4
Akkar	16
Halba	2
Nahr El Bared	7
Berqayel	2
Houaich	1
Nabi Barri	1
Others	3

Tripoli	55
Trablous Zeitoun	8
Haddadine	3
Trablous Et Tall	3
Trablous Qoubbeh	8
Mina N:1	12
Mina Jardins	1
Qalamoun	1
Beddaoui	6
Madineh Ej Jdideh	2
Camp Beddaoui	2
Others	9
Koura	18
Amioun	1
Kfar Aaqqa	1
Kfar Hazir	1
Dar Baaechtar	1
Kfar Hata	1
Kfar Qahel	1
Enfeh	2
Ras Masqa	1
Bohsas	4
Dahr El Ain	4
Others	1
Zgharta	16
Zgharta	4
Rachaaïne	1
Ardeh	1
Harf	1
MEjdlaiya	2
Haret El Faouar	1
Aalma	1
Bsebaal	1
Aaintourine	2
Aaqabet Sebaal	1
Others	1
Batroun	8
Kfar Aabida	2
Chikka	2
Aalali	1
Ras Nahhach	1
Hadtoun	1
Others	1
Nabateih	22
Nabatiyeh Tahta	5
Zibdine	1
Kfar Roummane	1
Aarab Salim	2
Zefta	2
Deir Ez Zahrani	1
Douair	2
Jibchit	1
Mayfadoun	1
Insar	1
Qaaqaiyet Ej Jisr	1
Kfar Sir	1
Others	3

Kesrwen	74
Jounieh Sarba	3
Jounieh Kaslik	5
Zouk Mkayel	8
Jounieh Ghadir	8
Zouk Mosbeh	5
Adonis	1
Haret Sakhr	11
Sahel Aalma	6
Tabarja	1
Adma Oua Dafneh	4
Safra	2
Ballouneh	2
Shayleh	11
Maameltein	1
Kfar Hbab	1
Jdaidet Ghazir	1
Kfour	1
Maaysra	1
Aachqout	1
Faqra	1
Aleyh	81
Aamroussiyeh	13
Hay Es Sellom	15
Khaldeh	2
El Oumara	3
Aaramoun	9
Mounseh	1
Bchamoun	8
Ain Aanoub	1
Blaybel	1
Houmal	1
Bsous	2
Aaley	5
Qmatiyeh	2
Ghaboun	1
Ain Ej Jdideh	1
Bayssour	6
Bsatine	1
Qabr Chmoun	2
Saoufar	2
Btater	1
Mecherfeh	1
Others	3
Jbeil	19
Jbayl	4
Mastita	1
Blat	1
Aamchit	3
Halate	3
Fidar	1
Hosrayel	1
Jedayel	1
Hboub	3
Others	1
Jezzine	1
Sejoud	1

Matn	102
Chiyah	1
Borj Hammoud	18
Nabaa	1
Sinn El Fil	2
Jisr El Bacha	1
Jdaidet El Matn	3
Baouchriyeh	1
Daoura	1
Sadd Baouchriyeh	2
Dekouaneh	11
Antelias	3
Naqqach	3
Aamaret Chalhoub	1
Zalqa	4
Byaqout	1
Dbayeh	4
Deir Aaoukar	1
Mansouriyeh	5
Fanar	5
Ain Saadeh	10
Roumieh	3
Bsalim	4
Raboueh	1
Beit Ech Chaar	1
Mazraat Yachouaa	2
Bikfaya	1
Beit Chabab	1
Broummana	3
Jouret El Ballout	1
Beit Meri	1
Ain El Maaysra	1
Borj	1
Aintoura	1
Dhour Ech Choueir	2
Chouaya	1
Chouf	29
Sadiyat	4
Naameh	3
Haret En Naameh	1
Chhim	3
Ketermaya	1
Barja	6
Dibbiyeh	1
Ain El Haour	1
Jadra	2
Ouadi Ez Zayni	1
Aalmane	1
Rmeileh	1
Ouardaniyeh	1
Aaqabeh	1
Jahliyah	1
Beqaata	1
Bcharreh	3
Bcharreh	1
Hadchit	1
Others	1

Zahleh	47
Zahleh El Midane	1
Haouch Ez Zaraaneh	2
Zahleh Er Rassiyeh	1
Zahleh El Berbara	2
Zahleh El Maallaqa	3
Zahleh Karak Nouh	4
Maallaqa Aradi	1
Zahleh Aradi	1
Ablah	2
Ksara	1
Ouadi El Aarayech	1
Jalala	3
Taalabaya	4
Taanayel	2
Saadnayel	2
Qabb Elias	7
Mrayjat	1
Barr Elias	2
Aanjar	1
Majdel Aanjar	1
Riyaq	3
Kfar Zabad	1
Others	1
Beqaa Gharby	23
Machghara	2
Joubb Jannine	1
Kamed El Laouz	2
Ghazzeh	3
Qaraaoun	7
Manara	1
Saouiri	1
Sohmor	1
Marj	4
Others	1

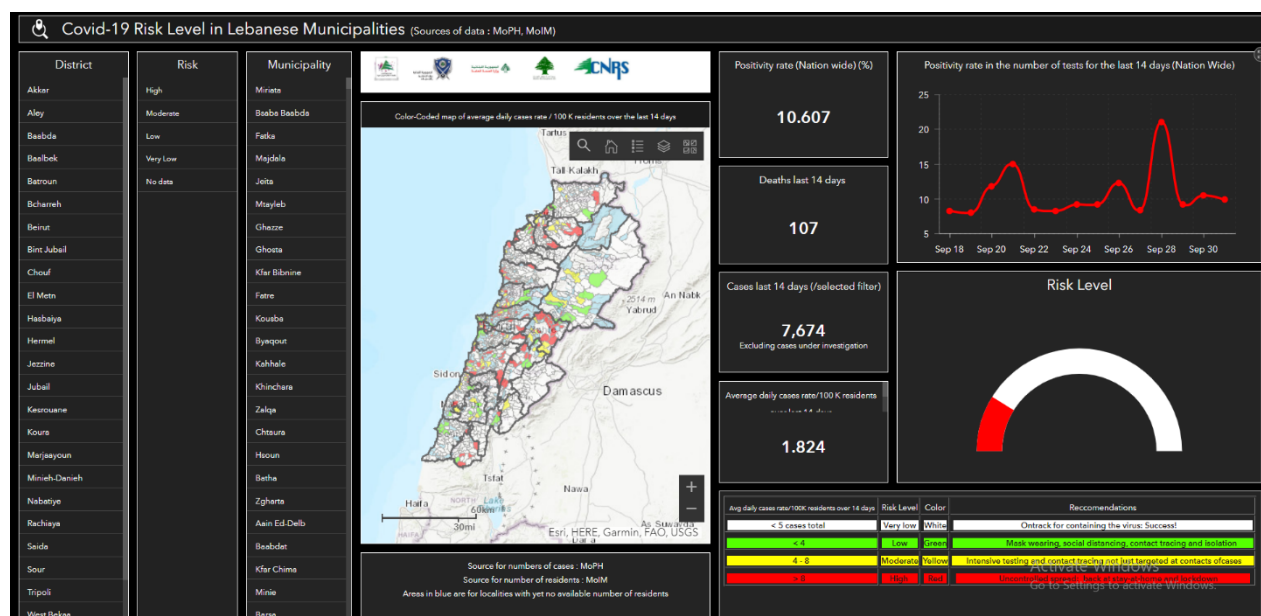
Baalbeck	99
Baalbek	41
Douris	14
Iaat	1
Aaddous	1
Tall Safiyeh	1
Nahleh	7
Majdaloun	1
Ain	1
Aarsal	1
Younine	4
Btedaai	1
Qsarnaba	3
Temnine Faouqa	1
Beit Chama	1
Chmistar	3
Taraya	7
Nabi Chit	1
Others	10
Rachaiya	2
Rachaiya El Ouadi	1
Deir El Aachayer	1
Bnt Jbeil	11
Rmaych	1
Aayta Ech Chaab	1
Safad El Battikh	2
Haddatha	2
Khirbet Selm	1
Hariss	3
Kounine	1

Saida	63
Saida El Qadimeh	18
Hlaliyeh	6
Haret Saida	1
Miyeh Ou Miyeh	3
Ain El Heloueh	4
Majdelyoun	2
Aabra	3
Bqosta	1
Boustane Cheikh	1
Ain Ed Delb	3
Ghaziyeh	2
Maghdoucheh	1
Darb Es Sim	1
Qennarit	1
Arzai	1
Zrariyeh	2
Insariyeh	1
Sarafand	2
Merouaniyeh	1
Mazraat Daoudiyeh	1
Aarab Tabbaya	1
Kfar Hatta	1
Others	6
Marjaayoun	6
Dibbine	1
Taybeh	1
Markaba	1
Meiss Ej Jabal	1
Majdel Selm	1
Others	1

Tyre	158
Sour	10
Sour El Bass	1
Jall Bahr Chemali	1
Sour Er Rachidiyeh	2
Sour Maachouq	1
Borj Ech Chemali	5
Deir Qanoun El Ain	3
Jouaiya	5
Ouadi Jilo	3
Qana	2
Maarakeh	1
Maaroub	1
Jennata	1
Saddiqine	1
Deir Kifa	1
Deir Qanoun Nahr	1
Srifa	1
Bedias	1
Aabbassiyeh	3
Chabriha	3
Borj Rahhal	1
Mansouri	1
Naqoura	1
Others	3
Hasbaya	1
Mimess	1

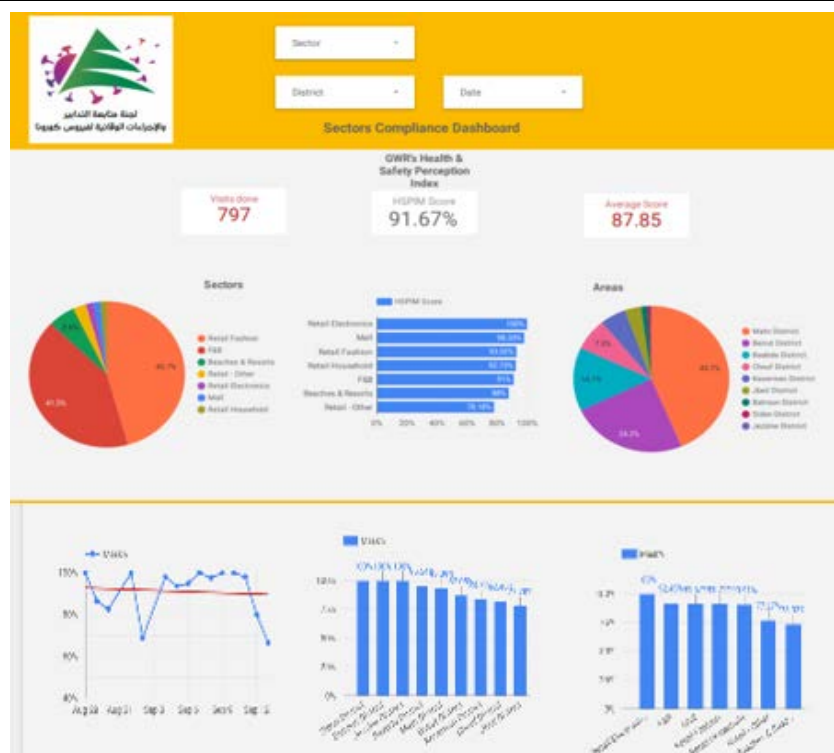
Others	133
--------	-----

The Online platform to measure the level of risk of the spread of the new Corona virus



This interactive platform allows you to know the level of risk of spreading the kurna virus according to districts, based on the number of cases registered daily and the number of residents in each district. For more information daily, you can access the following link: <https://bit.ly/DRM-RiskLevelInMunicipalities>

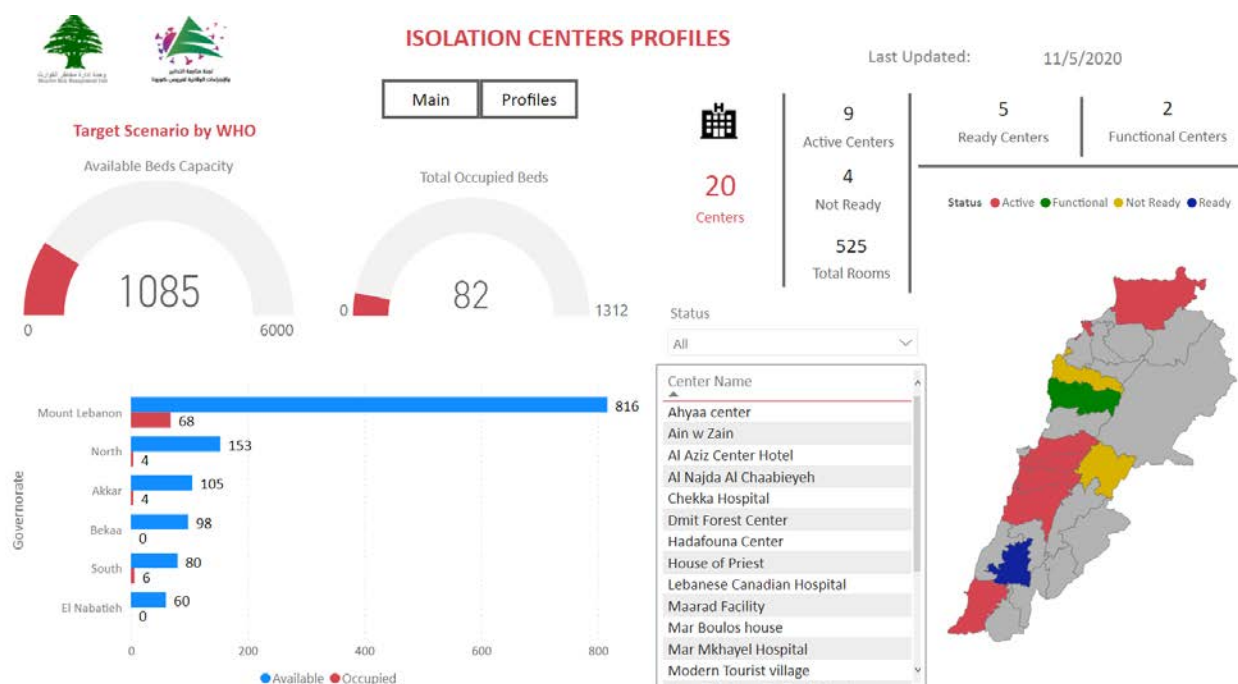
Online platform to track sector commitment in general mobilization procedures



Based on the recommendation issued by the National Committee for Follow-up of Preventive Measures and Measures to Confront the Coronavirus to open all sectors, provided that the general mobilization procedure (safe distance, muzzle, and hand sterilization) be applied, a special electronic platform was created that allows monitoring and measuring the percentage of commitment by various sectors on an ongoing basis.

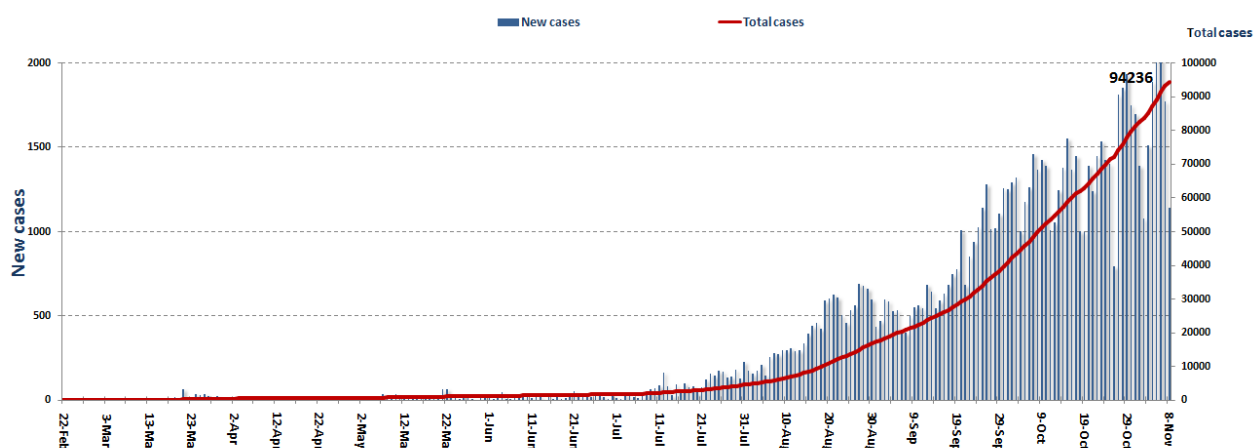
The detailed results can be viewed directly at the following link <http://bit.ly/covidsectordata>

Occupancy rate of isolation centers for cases infected with Coronavirus

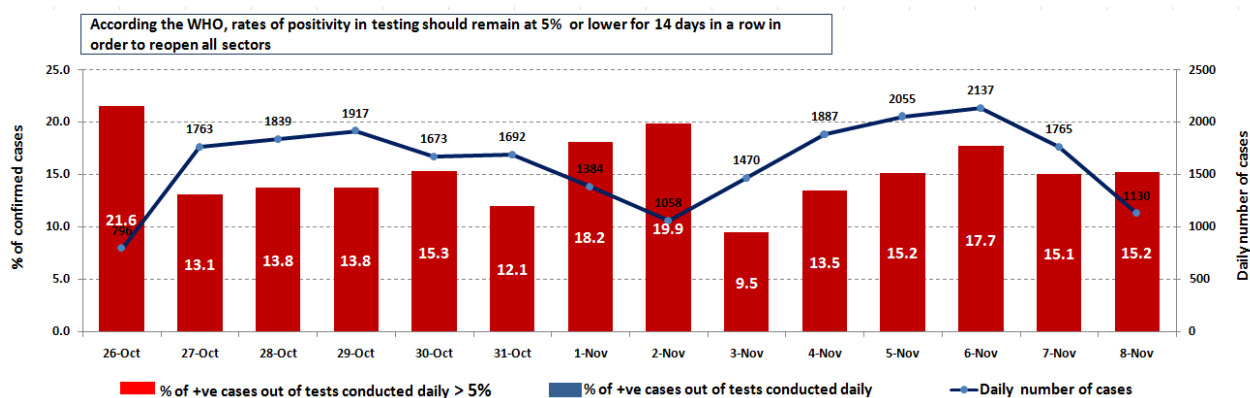


For more information about the isolation centers' distribution and the percentage of their occupancy, enter the following link: <http://bit.ly/DRM-IsolationCentersProfiles>

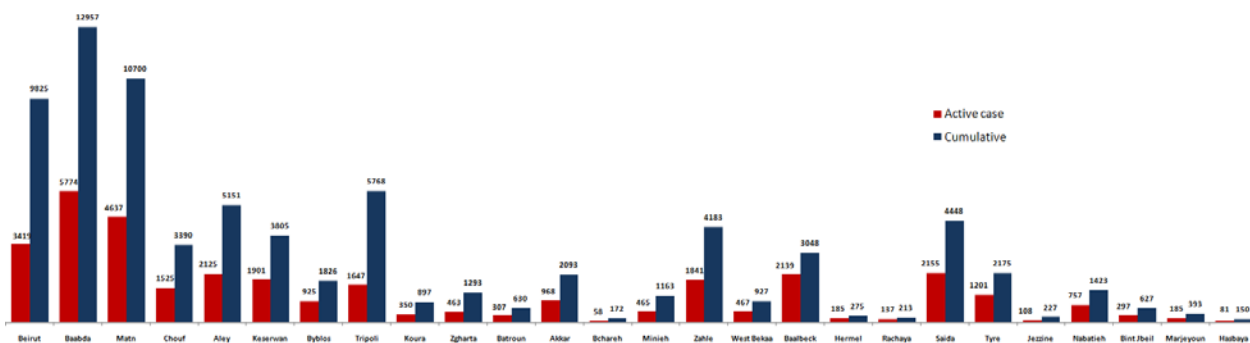
Cases per day



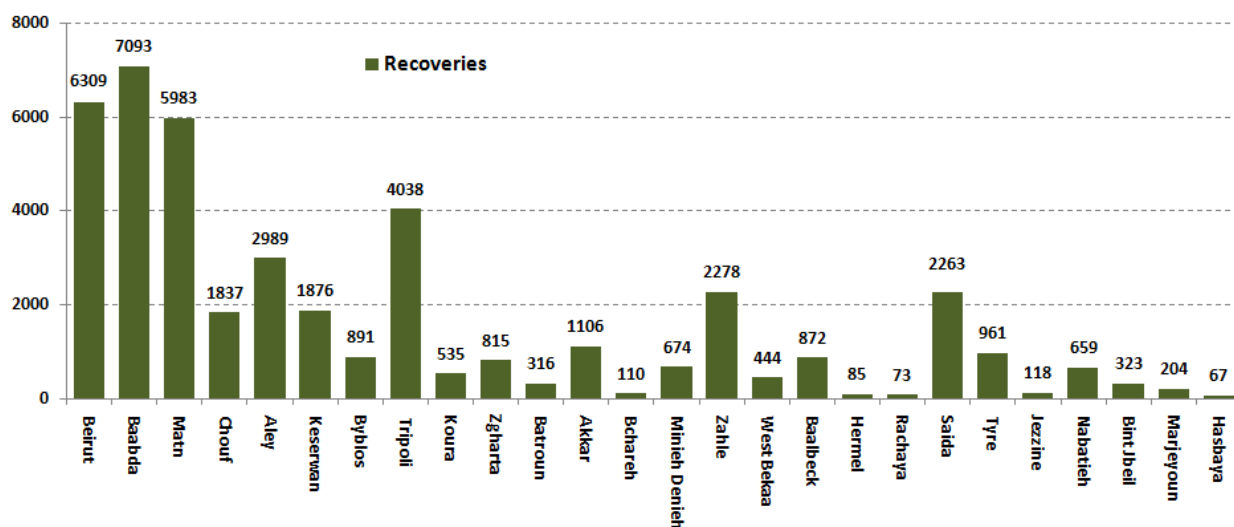
The percentage of positive cases out of the number of daily checks (26 Oct - 08 Nov 2020)



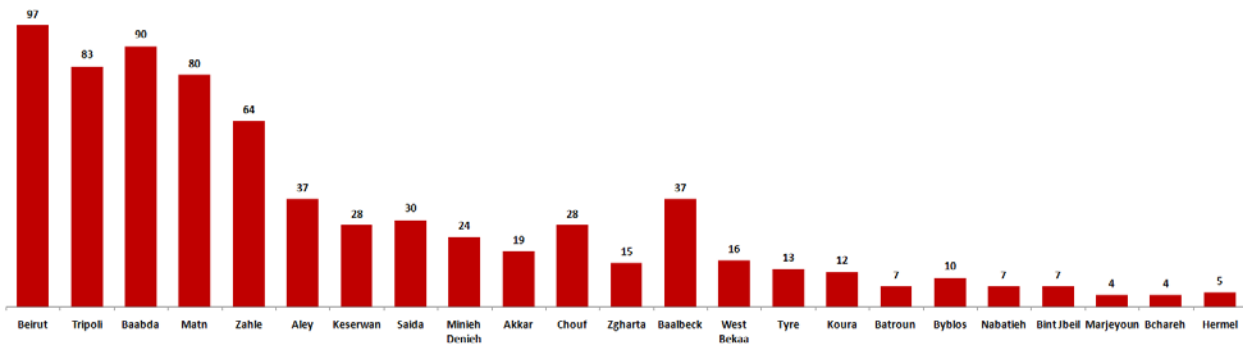
Distribution of Active Cases by Districts



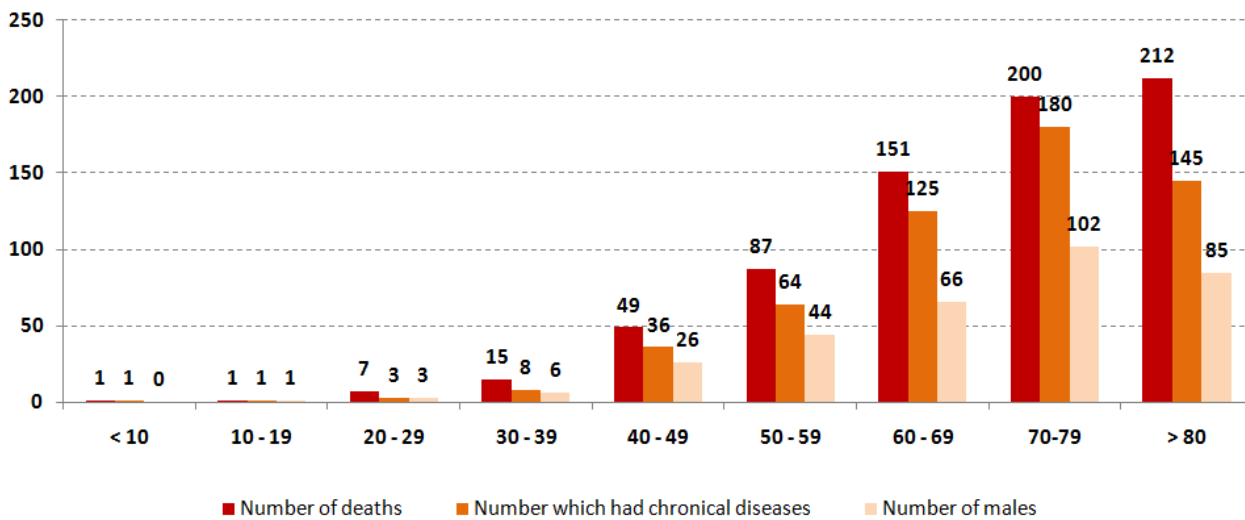
Recoveries



Distribution of deaths by Governorates



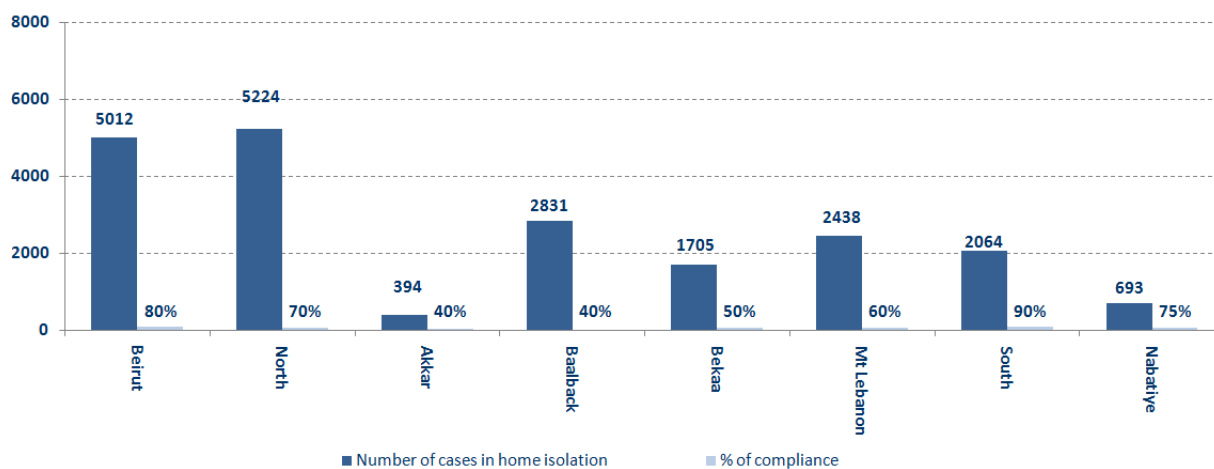
Distribution of deaths by Age



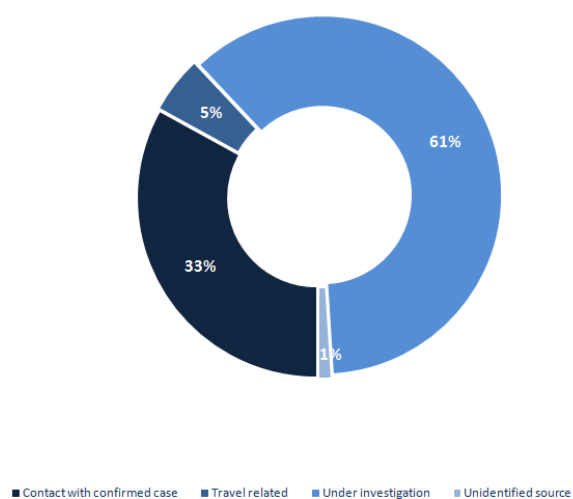
The distribution of the recorded deaths during the past 24 hours

Hospital	Residence	Gender	Age	Chronic
Sacred Heart Hospital	Bcharieh	Male	47	Yes
Hamoud Hospital	Saida	Male	86	Yes
Hamoud Hospital	Saida	Male	88	No
Al Roum Hospital	Matn	Male	72	Yes
Home	Aleyh	Male	89	Yes
Ain wZain Hospital	Aleyh	Male	82	Yes
Ain wZain Hospital	Aleyh	Female	62	Yes
Ain wZain Hospital	Chouf	Male	63	Yes
Ain wZain Hospital	Aleyh	Male	64	No
Ain wZain Hospital	Chouf	Male	60	Yes

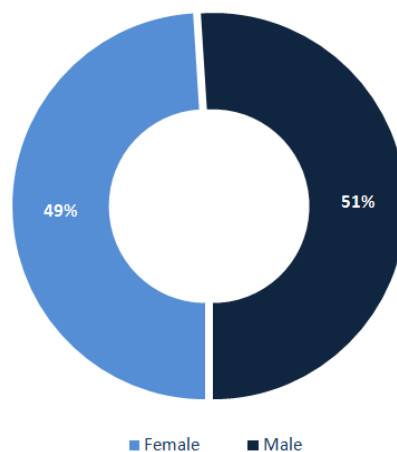
Number of individuals in home isolation and percentage of commitment to isolation



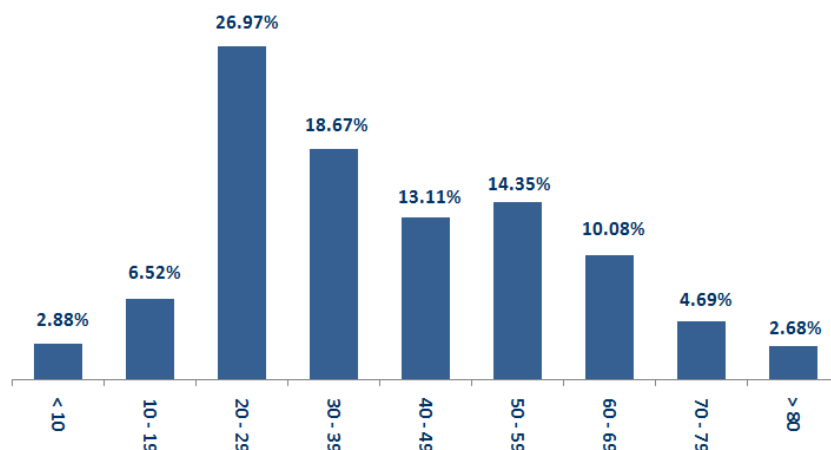
Exposure



Distribution according to gender



Distribution by age



Decisions and actions taken – 11/08/2020

Ministry of Public Health

- A statement was issued by the Ministry of Public Health in which it clarified the procedures that the Ministry is undertaking in coordination with the security services to ensure the implementation of general mobilization procedures. It also clarified its relationship with hospitals in terms of plasma donation by individuals as the relationship remains confined to the patient, the donor and the hospital without any role for the ministry. In addition to clarifying the mechanism for distributing Remdesivir to treat Corona patients, which was presented to the Ministry as a gift and was distributed to needy patients. Finally, the ministry confirmed through the statement that the numbers of injured people in Lebanon are documented with names by the ministry as it is received from accredited laboratories

Arriving from	Company	Flight Number	Number of Positive Cases
N/A			
Total			N/A

Lebanese Red Cross

237,429	Number of PCR tests transferred to laboratories	54,562 (11 New)	Number of additional ambulance centers ready to respond	48	ambulance centers	7,780 (66 New)	cases transferred to hospitals
166	Number of volunteers trained to transfer PCR tests	1,498	Number of trained paramedics	8,855	total number of respondents	100,410 (639 New)	number of those benefiting from awareness *sessions
967	The number of university volunteers trained to follow up on prevention measures in companies and institutions	291	Number of university volunteers trained to conduct awareness sessions	550	total LRC volunteers for covid19	8,752	number of trained managers for isolation centers
4,659 (5 New)	Number of beneficiaries from educational electronic platforms COVID-19	261,781	Number of distributed equipment	1,253,885	total distributed posters, brochures, and flyers on covid19 prevention	781	number of prisons that have been disinfected

General Directorate of Internal Security Forces

The number of seizure records during the past 24 hours					The total number of records since 03/08/2020	
Written records of violating institutions (absorptive capacity and preventive measures)				29		
Written records of persons violating the decision to wear a mask				504	Beirut	22,970
Written records of people violating the general mobilization decision (Aragil* and social distancing)				572	Mount Leb	24,031
Total				1105	Begaa	9,638
					North	8,105
Beirut	Mount Leb	Begaa	North	South	South	8,877
348	593	70	43	51	Total	73,621

General Directorate of State Security

- Reporting new injuries in the districts.
- Reporting a new injury to the General Directorate of State Security, bringing the total number of positive cases to 36.
- Notification of the percentage of compliance with the general mobilization decision in the governorates, which came as follows within the past 24 hours:

Beirut	South	North	Akkar	Begaa	Nabateih	Baalbek Hermel	Mount Leb
50%	40%	45%	42%	66%	61%	20%	43%

General Directorate of General Security

- Follow up the implementation of the required security and preventive measures at the airport, ports and border crossings.
- Reporting cases registered in the various districts and cases in home quarantine.
- Reporting the commitment of the municipalities to the decision of the Minister of Interior and Municipalities:

Municipalities that abided by the decision	Municipalities didn't abide by the decision
<ul style="list-style-type: none"> - Bekaa District: Kfar Zabad, Mashghara, Yanta, Qaraoun, Lala, Qaa Al-Reem, Farzol, Niha - Towns and villages located within the Aley district. - Towns and villages within the Chouf district. 	<ul style="list-style-type: none"> - Akkar District: Nandat - Chouf District: El Kharroub District

- Follow up the implementation of the required security and preventive measures at the airport, ports and border crossings.
- Reporting cases registered in the various districts and cases in home quarantine.

Ministry of Public Works and Transportation

Departing Flights		Arriving Flights	
Number of Flights	38	Number of Flights	37
Number of Departing Individuals	4,216	Number of Arrivals	3,636

Port	Entered			Left		
	Import	Direction	#	Export	Direction	#
Beirut	Gibson	Ukraine	1	Containers	Alexandaria	1
	Containers	Port Said	1			
Saida	Marble	Egypt	1			
	Metals	Egypt	1			
Zahrani	Fuel Oil	Jeyyeh Port	1			
Jeyyeh	Fuel Oil	Beirut Port	1	Blank	Turkey	1
Tripoli	Blank	Beirut Port	1			
Total			7			2

General announcements

The Ministry of Education and Higher Education announced that lessons would be halted in attendance in official and private educational institutions on Monday and Tuesday, November 9 and 10, 2020, pending the decisions issued by the Supreme Defense Council meeting on Tuesday, provided that education is completed within the two days specified according to the available means and used in each An educational institution, and that schools, institutes, extension centers, and teachers' homes remain open to secure administrative work, taking into account the rotation of attendance among members of the administrative body. The Ministry also affirmed that the official examinations and examinations in higher education institutions should be completed and the Colloquium examinations in attendance, provided that the necessary health measures are taken.

Note: The decisions can be found at www.drm.pcm.gov.lb

Examples of lack of adherence to safety measures

Failure of some municipalities to abide by the Ministry of Interior and Municipalities Decision No. 1025/2020 related to the closure of towns that have a high risk of the spread of the epidemic.

- Demand gatherings and demonstrations.
- Failure to comply with the preventive measures and procedures required in several stores and markets (putting on a muzzle or face mask, sterilizing hands, maintaining a safe distance).
- Non-compliance with the 50% occupancy rate in several restaurants and amusement game centers.
- Gatherings for social events.
- Failure of those in contact with confirmed cases to adhere to home isolation procedures until the results of the laboratory tests are issued.

If you feel any symptoms, call directly the hotline of the Ministry of Public Health: 1214 or 01/594459

Laboratories that did not comply with the procedures approved by the MoPH About the information required to be recorded for infected cases within the past 24 hours

Laboratories that did not specify the Governorate	
Laboratory/Hospitals	Cases
Rafic Hariri University hospital	26
Hadi Laboratory/ Haret Hreik	16
Laboratoire Inovie / Fayyadie	16
Doctors Center	11
Hospital Notre Dame de Zghorta	9
Hotel Dieu de France	3
Fontana Laboratories	3
Hospital Bahman	1
Hospital Saint Georges / Achrafieh	1
Hospital Ragheb Harb	1

Number of positive cases without specifying the place of residence	
Laboratory/Hospitals	Cases
Rafic Hariri University hospital	26
Laboratoire Inovie / Fayyadie	17
Hadi Laboratory/ Haret Hreik	16
Doctors Center	11
Hospital Notre Dame de Zghorta	9
Hospital Bahman	6
Mashrek Medical Diagnostic Center MDC	6
Fontana Laboratories	4
Hotel Dieu de France	3
Hospital Ragheb Harb	3
Hospital Rassoul Aazam	2
Hospital Hammoud / Saida	2
Hospital Sacre Coeur	1
Hospital Saint Georges / Achrafieh	1
Laboratoire Akiki et Boulos	1

Number of positive cases without a phone number	
Laboratory/Hospitals	Cases
Hadi Laboratory/ Haret Hreik	5
Hospital Saint Georges / Achrafieh	1

A list of the laboratories accredited by the MoPH to conduct PCR tests

المختبرات الحكومية المؤهلة لإجراء التشخيص المخبري لفيروس كورونا بطريقة الـ RT-PCR

الموقع	المختبر
بيروت	مستشفى رفيق الحريري الجامعي RHUH
حلبا	مستشفى حلبا الحكومي
طرابلس	مستشفى طرابلس الحكومي
البترون	مستشفى البترون الحكومي
كسروان	مستشفى فتوح كسروان الحكومي (البوار)
النبطية	مستشفى نبيه بري الحكومي الجامعي
نينين	مستشفى نينين الحكومي
بلت جيل	مستشفى بلت جيل الحكومي
بعلبك	مستشفى بعلبك الحكومي
زحلة	مستشفى الرئيس الياس الهراوي الحكومي

مختبرات المستشفيات العسكرية

بيروت	المستشفى العسكري المركزي في بيروت Hôpital Militaire Central
-------	---

المختبرات المؤهلة لأخذ عينات "المسحات الأنفية" بطريقة Drive- thru

بيروت	مختبر ميديكال دياغنوستيك تريتمانت سنتر (الحمراء) Medical Diagnostic Treatment Center (MDTC)
بيروت	مختبر ميد لآب MedLab SAL CIC ALS (الحمراء – الجفيلور)
بيروت	مختبرات عيتاني Itani Medical Laboratories (المزرعة)
الأشرفية	مختبر أ ب سي ABC Laboratories
الشياح	مختبرات معوض الطبية Mouawad Medical Laboratory
الشياح	مختبرات الشياح (د. فؤاد ربحان) Rihan Medical Center
المنصورة	مختبر إكسبرت لآب Expert Lab
بعلبك	مختبر لايف لآب Life LAB
رياق	مستشفى الرياق Riyak Hospital

المختبرات الخاصة المؤهلة لإجراء التشخيص المخبري لفيروس كورونا بطريقة RT-PCR

المختبر	الموقع
AUBMC مستشفى الجامعة الأميركية	بيروت
Hotel-Dieu de France (HDF) مستشفى أوتيل ديو الجامعي	بيروت
مختبرات رندولف ميريو (الجامعة اليسوعية – المتحف)	بيروت
Laboratoire Rodolphe Mérieux (Université Saint-Joseph)	بيروت
Saint-George Hospital - UMC مستشفى القديس جاورجيوس الجامعي	بيروت
Makassed General Hospital مستشفى المقاصد	بيروت
LAU Medical Center - Rizk Hospital مستشفى رزق الجامعي	بيروت
Hôpital Libanais Geitawi - CHU مستشفى اللبناني الجعيتاوي الجامعي	بيروت
Hôpital Notre-Dame du Rosaire مستشفى الوردية	بيروت
Doctor 's Center مختبر مركز الأطباء	بيروت
Fontana Laboratories مختبر فونتانا (الحمرا)	بيروت
مختبر الأمن العام (العناتية)	بيروت
Laboratoire Jabre-Ghorra مختبرات جبر وغرة	بيروت
Saint Marc Medical & Diagnostic Center مختبر السان مارك	بيروت
Laboratoire Moderne (Modern Lab- Berjaoui) المختبرات الحديثة	الغبري
Sahel General Hospital (SGH) مستشفى الساحل	الغبري
مستشفى الزعراء الجامعي	الغبري
Al Zahraa Hospital - UMC مستشفى الرسول الأعظم	برج الزراجة
مستشفى بهمن	حارة حريك
Al Rassoul Al Aazam Hospital Bahman Hospital	حارة حريك
مختبر ناتيونال دياغنوستك سرفيس كومباني	حارة حريك
National Diagnostic Services Company (NDSC)	حارة حريك
Medical Diagnostic Center مختبر الدكتور محمود عثمان - مركز التحاليل الطبية	الزبدية
American Diagnostic Center (ADC) مختبر أميريك دياغنوستك سنتر	الجناب
Mount Lebanon Hospital مستشفى جبل لبنان	بعنا
Hôpital Saint-George – Hadath مستشفى السان جورج الحدث	بعنا
Al Hadi Laboratory مختبر الهادي	بعنا
INOIE-Liban مختبر	بعنا

Hôpital du Sacré- Coeur مستشفى قلب يسوع	الحازمية
Clinigene مختبر كلينيجان	الحازمية
Hôpital Dr.Samir Serhal مستشفى سرحال	المتن
Transmedical for Life مختبر ترانسيميديكال فور ليف	المتن
Haroun Hospital مستشفى هارون	الزلفا
Bellevue Medical Center (BMC) مستشفى بلغو	المنصورة
Hôpital Albert Haykal مستشفى هيكال	الكورة
Centre Hospitalier du Nord (CHN) مركز الشمال الإستشفائي	زغرتا
Mazloum Hospital مستشفى المظلوم	طرابلس
Al Mounla Hospital مستشفى المنلا	طرابلس
Nini Hospital مستشفى النيني	طرابلس
مختبر ميكروبيولوجيا الصحة والبيئة LMSE – المعهد العالي للدكتوراه، الجامعة اللبنانية	طرابلس
CHU - Notre-Dame des Secours مستشفى سيدة المعونات الجامعي	جبل
Lab Akiki & Boulous مختبر عقيقي وبولس	جبل
Centre Médical Wakim مختبر والكم	جونية
Ain Wazein Hospital مستشفى عين وزين	الشوف
Hammoud Hospital UMC مستشفى حمود الجامعي	صيدا
Al Karim Medical Laboratory (KML) مختبر الكريم	صيدا
Sheikh Ragheb Harb Hospital مستشفى الشيخ راجب حرب	البيتمنة
Sabbah Diagnostic Center (SDC) مختبر الصباح	البيطية
Jabal Amel Hospital مستشفى جبل عامل	صور
Mashrek Diagnostic Center (MDC) مختبر المشرق	صور
Dar Al Amal University Hospital مستشفى دار الأمل الجامعي	بعلبك
Khoury General Hospital مستشفى خوري	زحلة
Medical Care Center (MCC) مختبر ميديكال كير سنتر	زحلة