



Lebanon National Operations Room Daily Report on COVID-19

Tuesday, October 06, 2020

Report #202

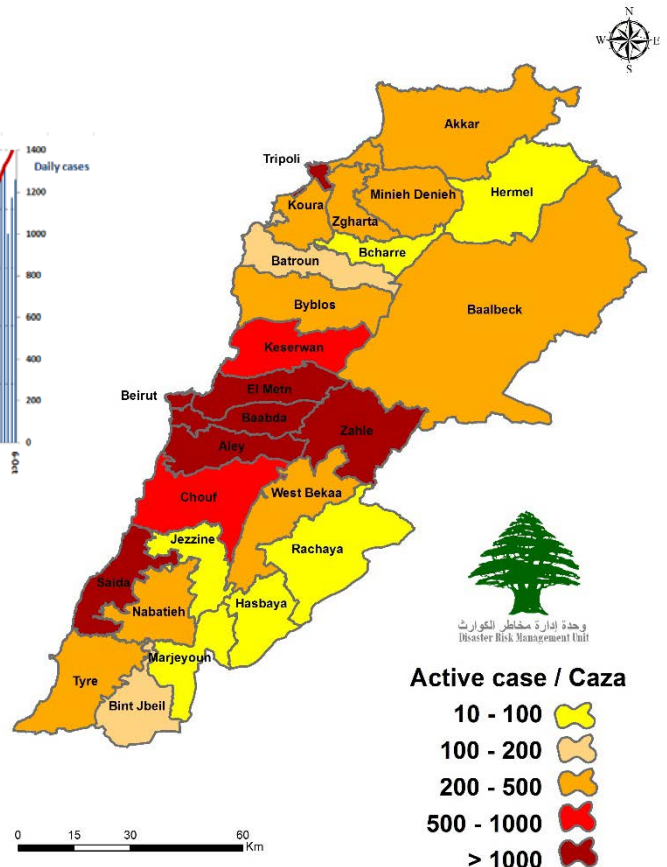
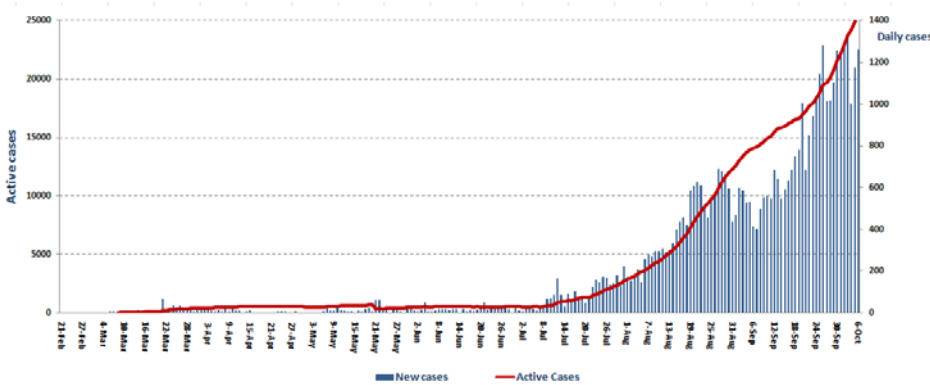
Time Published: 11:30 PM

1,261 New Cases		46,918 Total Cases since 21.2.2020		424 Total Deaths	20,590 Total Recovered
1,260 Residents	1 Expats	45,197 Residents	1,721 Expats	10 New Deaths	347 New Recovered
1,007 Total Cases in the Health Sector		25,904 Total Active Cases		625 Hospitalized Cases	165 Total Cases in ICU
20 New Cases in the Health Sector		25,279 Cases in Home Isolation		457 Mild Cases	0 New Cases in ICU
871,781 COVID-19 Tests since 21.2.2020		Lebanon Status compared to the World			
886 COVID-19 Tests at Airport within 24 hrs.		13,368 COVID-19 tests for residents within 24 hrs.		Total Cumulative	46,918
				Total Deaths	424
				Deaths percentage	0,90%
				Total recoveries	20,590
					35,891,675
					1,051,113
					2,92%
					26,998,272

Ref: Ministry of Public Health Data

Number of Cases by Location

- 8,574 case is Under investigation



Beirut	114
Ras Beirut	1
Manara	2
Qreitem	1
Raouche	2
Hamra	8
Ein El Teeneh	1
Mseitbeh	5
Mar Elias	4
Tallet El Khayat	3
Zarif	2
Mina El Hosn	1
Mazraa	12
Borj Abi Haidar	4
Basta Fawka	3
Tariq Jdeedeh	10
Ras El Nabaa	16
Basta El Tahta	2
Jeitawy	1
Ashrafieh	15
Others	21
Keserwan	39
Zouk Michael	8
Ghadir	2
Zouk Mosbeh	4
Adonis	3
Sahel Alma	4
Kfar Yassine	1
Tabarja	1
Adma & Dafneh	1
Safra	1
Ajaltoun	2
Sehaile	1
Jeitawy	1
Aintoura	1
Ghazir	1
Ghosta	2
Hayyata	1
Qleiaat	2
Ashkout	2
Feitroun	1
Baalbak	26
Baalbak	1
Ein Borday	2
Doures	2
Eiat	1
Ein	1
Ersal	1
Beit Chama	1
Temnin El Tahta	1
Shmestar	1
Hoch El Nabe	1
Tarayya	1
Sreen El Fawka	1
Nabe Sheeth	2
Others	10
Jezzine	3
Baysour	1
Aramta	2
Rashayya	2
Dahr El Ahmar	1
Others	1

Baabda	170
Chiah	24
Jnah	4
Ouzai	2
Bir Hassan	5
Madeeneh Riyadieh	1
Ghobeiry	6
Ein Rimmaneh	8
Forn Shubbak	4
Haret Hreik	23
Lailaki	3
Borj Barajneh	9
Mreijeh	14
Tahweetet El Ghadir	2
Baabda	7
Hazmieh	3
Hadat	32
Sabtieh	1
Botchay	2
Loueizeh	1
Kfarshima	3
Wady Shahrour	1
Bsaba	1
Dhour Abadieh	1
Chouit	1
Qernayel	1
Others	11
Batroun	21
Batroun	6
Thoum	1
Kfar Abida	1
Kabba	1
Shekka	5
Kour	1
bajdarfel	1
Hamat	1
Douma	1
Awra	1
Kfour El Araby	1
Others	1
Hasbaya	1
Meemes	1
Chouf	45
Damour	1
Saadiyat	2
Naameh	4
Chhim	3
Siblin	1
Barja	11
Jiyyeh	1
Jadra	1
Werdaniyyeh	1
Semqaniyyeh	1
Werhaniyyeh	1
Freidees	1
Baaqleen	3
Hasrout	1
Botmeh	1
Baqaata	2
Kahloun	1
Kfarnabrakh	2
Bater	1

Aley	81
Amrousieh	8
Hay El Sillom	7
Qebbeh	1
Khaldeh	2
Al Oumara	12
Deir Qoubel	1
Aramoun	6
Bshamoun	10
Bdadoun	1
Aley	3
Kahale	5
Qmatieh	1
Bkheshtay	2
Baysour	2
Dweir A Romman	1
Majdayya	1
Ainab	1
Kfarmatta	1
Majdel Baana	1
Eghmeed	1
Azzounieh	1
Mecherfe	2
Others	11
Zahle	79
Mar Michael	1
Rasieh	1
Berabara	3
Maallqa	6
Karak Nouh	1
Saydet Al Najat	1
Hoch Al Oumara	8
Forzol	13
Ksara	6
Wady Al Arayeh	2
Jlala	3
Taalabaya	3
Saadnayel	4
Wady Al Delm	1
Bar Elias	5
Majdel Anjar	1
Riyak	1
Kousaya	1
Reet	3
Terbol	1
Dalhamieh	1
Faour	1
Others	12
Tripoli	68
Bab Al Ramel	1
Qebbeh	3
Zahrieh	1
Tabbaneh	1
Mina	12
Tripoli	43
Beddawi	3
Wady Al Nahle	1
Others	3

Matn	166
Borj Hammoud	17
Nabaa	1
Sin El Fil	14
Jdeidet El Metn	6
Bouchrieh	5
Dora	8
Rawda	1
Sed Al Bouchrieh	4
Sabtieh	8
Dekwene	18
Antelias	3
Jal El Dib	3
Naqqash	4
Zalka	9
Byaqout	2
Dbayyeh	5
Mansourieh	6
Fanar	6
Ein Saadeh	8
Roumieh	2
Bsalim	4
QornetChehwan	1
Elissar	1
Rabweh	1
Beit Chaar	8
Deek El Mahdi	2
MazraetYashouh	3
Zikrit	1
Beit Chabab	1
Qornet El Hamra	1
Broummana	3
Beit Merry	1
Msheekha	1
Douwar	1
Baskinta	1
Others	6
Bint Jbeil	5
Rmeish	1
Shakra	1
Koudeen	1
Froun	1
Others	1
Byblos	28
Byblos	10
Mastita	2
Blat	2
Amshit	4
Halat	1
Jedayel	1
Nahr Ibrahim	1
Barbara	1
Ihmej	1
Adonis	1
Hboub	2
Kfar Mashoun	1
Gherfeen	1
Menyeh Dunyeh	14
Menyeh	8
Bhannin	1
Kfarhabou	1
Bakhoun	1

Akkar	39
Halba	2
Majdel Akkar	3
Sweiseh	1
Zouk Al Habalsa	1
Masoudieh	2
Tal Hmayra	1
Bebnin	1
Bazzal	1
Houeish	1
Meshmesh	3
Fneidek	3
Majdala	3
Rahbeh	1
Ein Tanta	1
Meghrafah	1
Qbayyat	3
Kalkha	1
Akroum	1
Others	9

Barouk	2
Others	4
Western Bekaa	7
Jeb Jennin	2
Ghazzeh	1
Manara	1
Marej	1
Others	2
Koura	16
Kosba	1
Rashdebbin	1
Ejdaebreen	2
Anfeh	2
Ras Maqa	1
Dahr Al Ein	2
Barsa	2
Nakhle	3
Others	2

Tyre	31
Tyre	1
Bass	2
Rasheedieh	3
Borj al Chemali	1
Deir Ames	1
Maaroub	1
Bazourieh	4
Deir Qanoun Nahr	1
Bedyas	6
Jbal Al Botom	1
Shamaa	2
Naqoura	1
Others	7
Nabatieh	12
Nabatieh Al Tahta	2
Mazraet Kfar Joz	1
Jarjough	1
Toul	1
Dweir	1
Jebsheet	2
Ansar	1
Qaaqaiyet Al Jesr	2
Others	1

Saida	74
Saida Kadeemah	8
Sabil	1
Rjal Al Arbaeen	1
Hlalieh	2
Haret Saida	2
Miyyeh Miyyeh	4
Ein Al Helwe	8
Kefraya	1
Majdelyoun	1
Abra	13
Bqosta	1
Ein Al Delb	1
Adloun	1
Mazraet Janjlaya	1
Saida	23
Others	6
Others	195

The number of beds available for those infected with Coronavirus and the occupancy rate

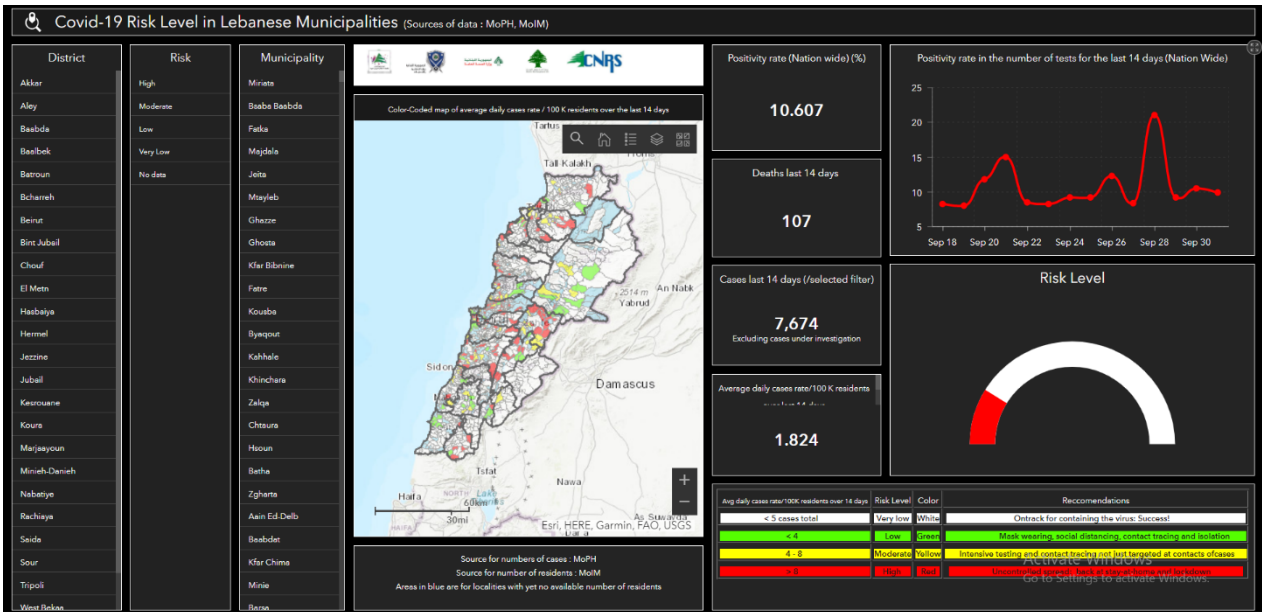


For daily information on all the details of the bed distribution available for Covid-19 patients in the various governorates according to the hospitals:

Computer: <https://bit.ly/DRM-HospitalsOccupancy-PC>

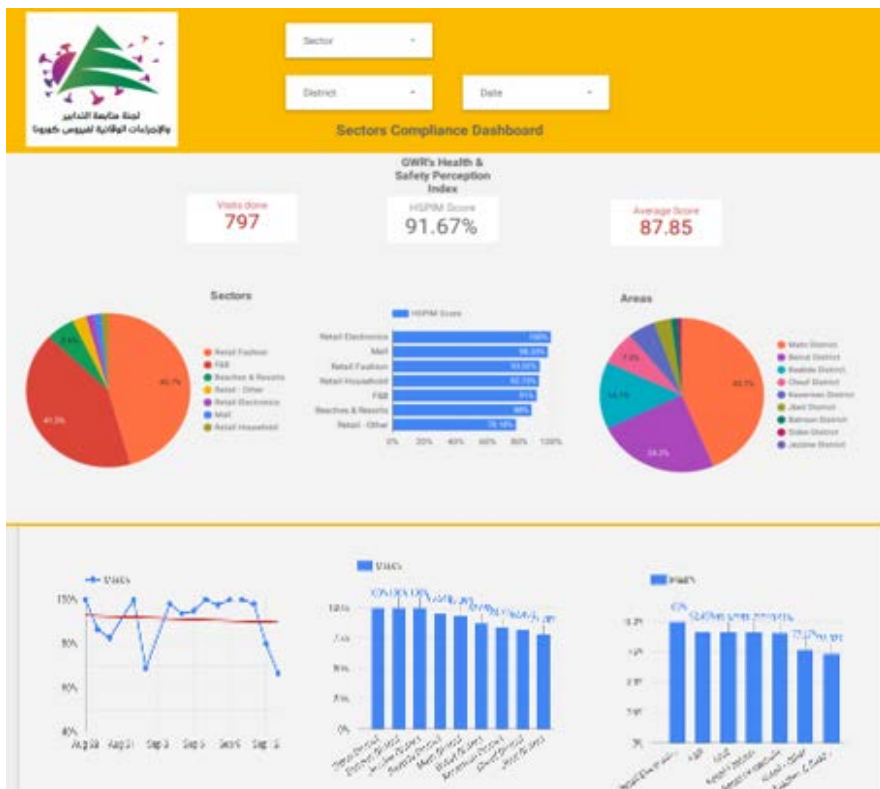
By phone: <https://bit.ly/DRM-HospitalsOccupancy-Mobile>

The Online platform to measure the level of risk of the spread of the new Corona virus by district



This interactive platform allows you to know the level of risk of spreading the kurna virus according to districts, based on the number of cases registered daily and the number of residents in each district. For more information on a daily basis, you can access the following link:
<https://bit.ly/DRM-RiskLevelInMunicipalities>

Online platform to track sector commitment in general mobilization procedures

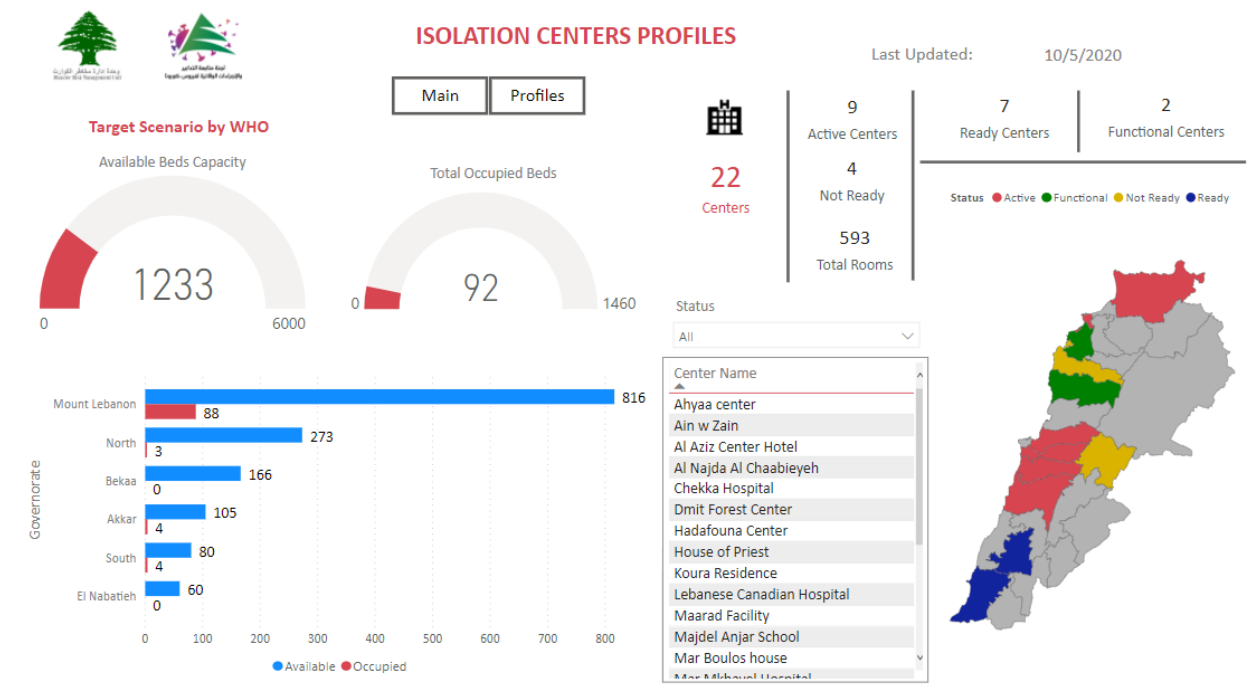


Based on the recommendation issued by the National Committee for Follow-up of Preventive Measures and Measures to Confront the Coronavirus to open all sectors, provided that the general mobilization procedure (safe distance, muzzle, and hand sterilization) be applied, a special electronic platform was created that allows monitoring and measuring the percentage of commitment by various sectors on an ongoing basis.

The detailed results can be viewed directly at the following link:

<http://bit.ly/covidsectordata>

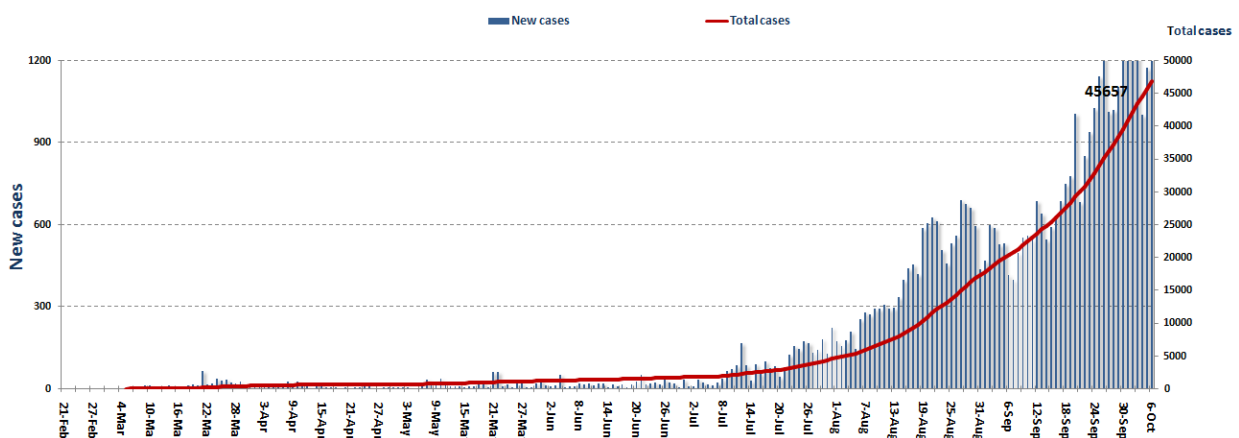
Occupancy rate of isolation centers for cases infected with Coronavirus



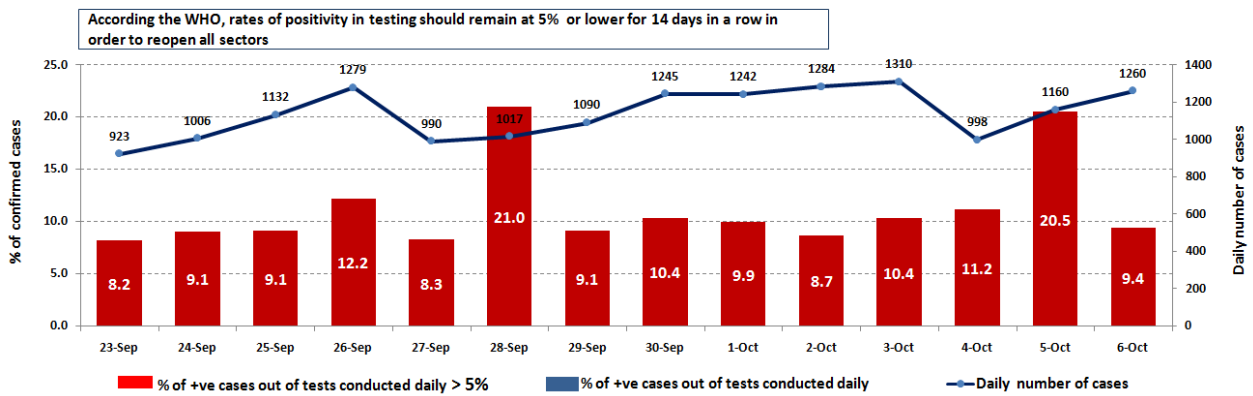
For more information about the isolation centers' distribution and the percentage of their occupancy, enter the following link: <http://bit.ly/DRM-IsolationCentersProfiles>

Note: These centers have been equipped in cooperation between the National Committee for Follow-up of Preventive Measures and Measures to Confront the Coronavirus and Governors and Municipalities, the United Nations Development Program, the World Health Organization, UNICEF, the Ministry of Public Health, the Syndicate of Nurses in Lebanon and the Syndicate of Specialists in Social Work.

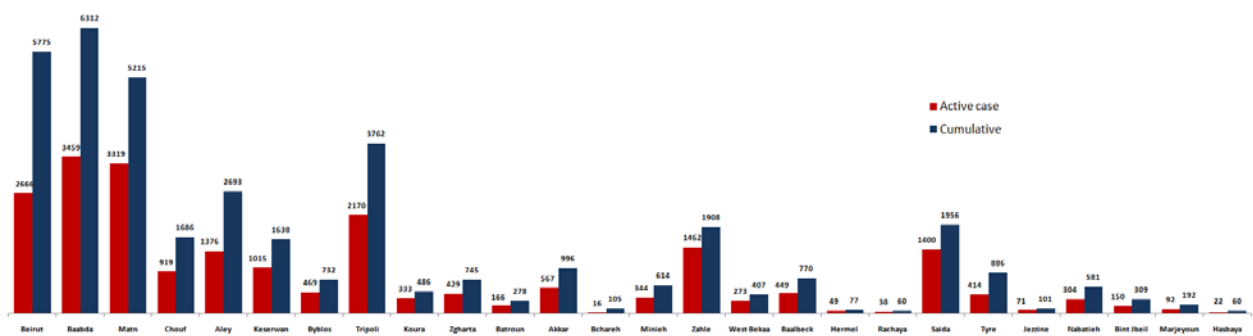
Cases per day



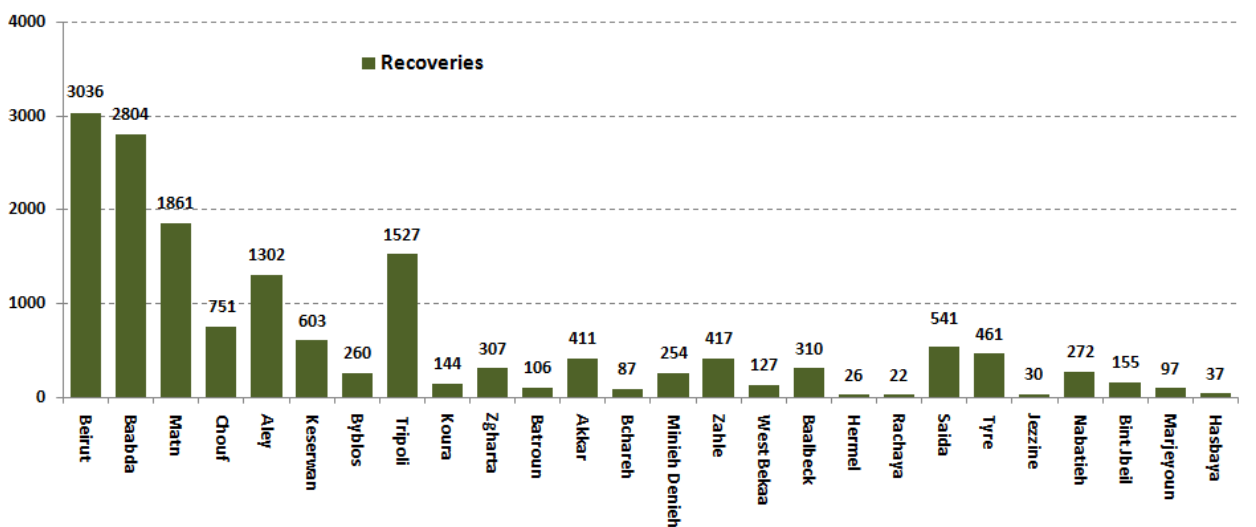
The percentage of positive cases out of the number of daily checks (23 September to 06 October 2020)



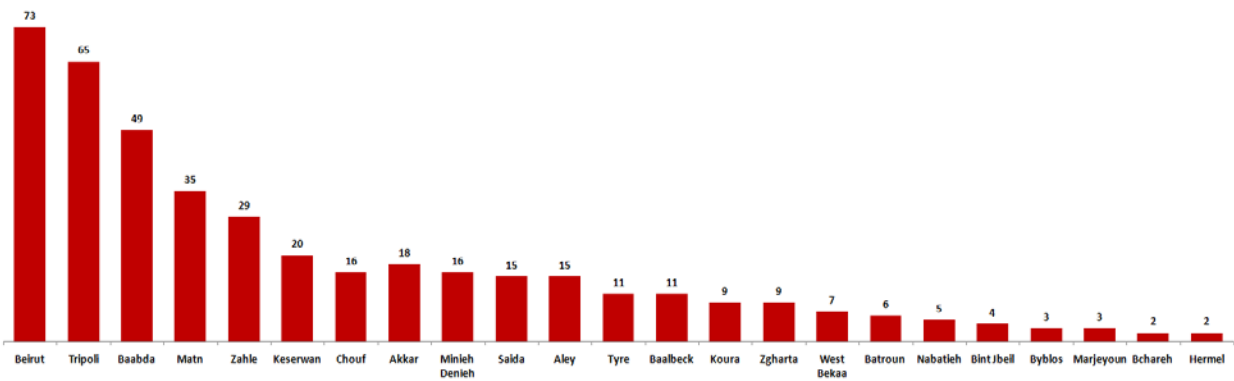
Distribution of Active Cases by Districts



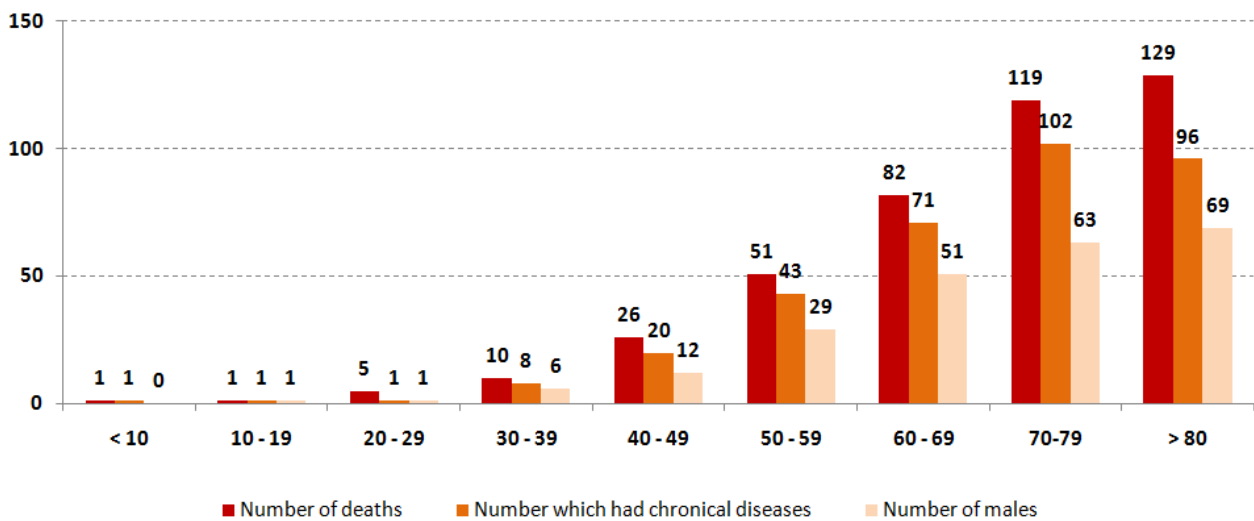
Recoveries



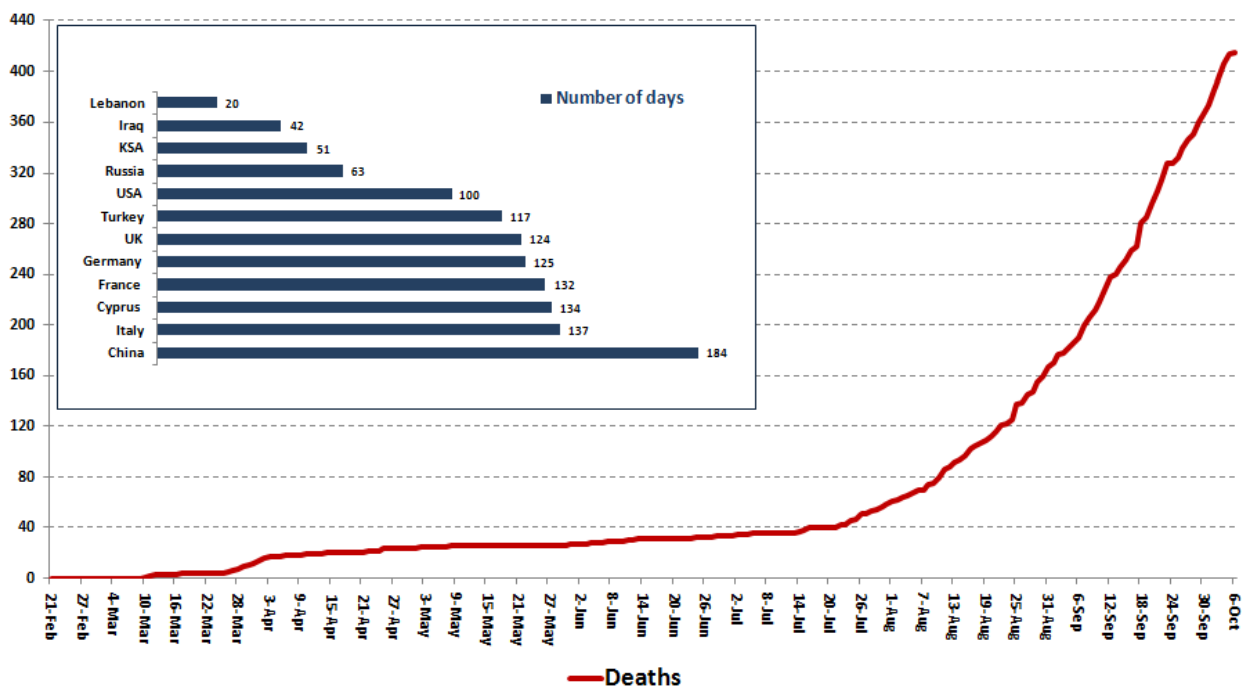
Distribution of deaths by Governorates



Distribution of deaths by Age



Comparison of the rate of doubling of the number of deaths in Lebanon with other countries (death doubling rate)

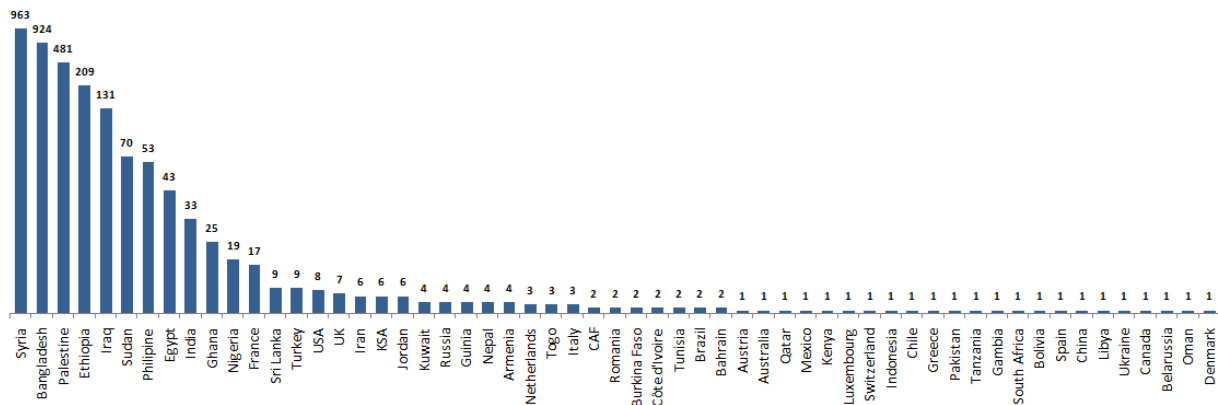


The distribution of the recorded deaths during the past 24 hours

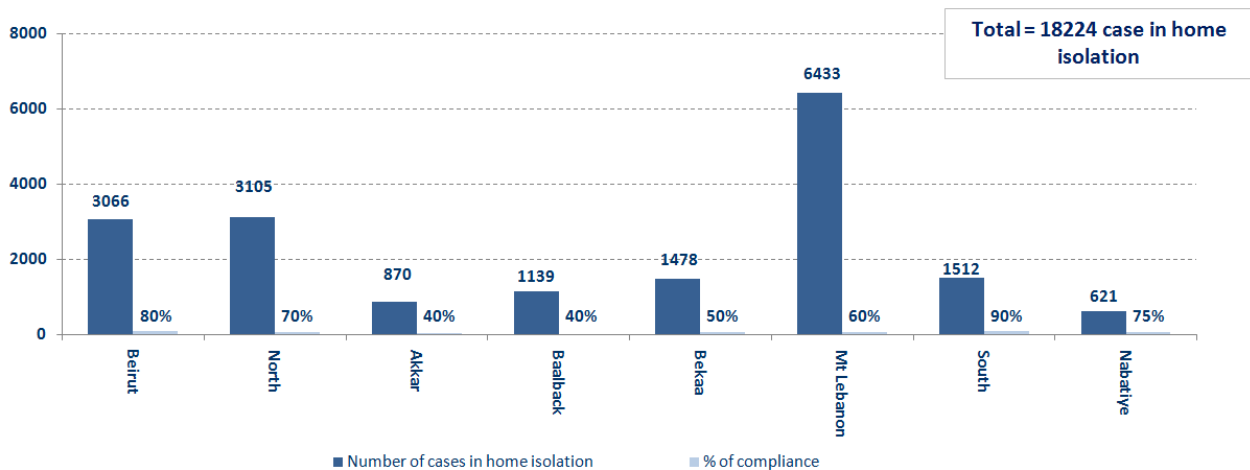
Hospital	Residence	Gender	Age	Chronic
Hamchari	Saida	Male	86	Yes
Makased	Beirut	Male	83	Yes
Tripoli Gov.	Tripoli	Male	58	Yes
Hamchari	Saida	Female	70	Yes
El Nini	Zgharta	Female	87	Yes
Baalback Gov.	Zahle	Female	80	Yes
Herawi Gov.	Zahle	Male	56	No
Herawi Gov.	West Bekaa	Male	62	Yes
Herawi Gov.	Zahle	Female	44	Yes
Herawi Gov.	Zahle	Female	54	Yes

Distribution of cases by nationality

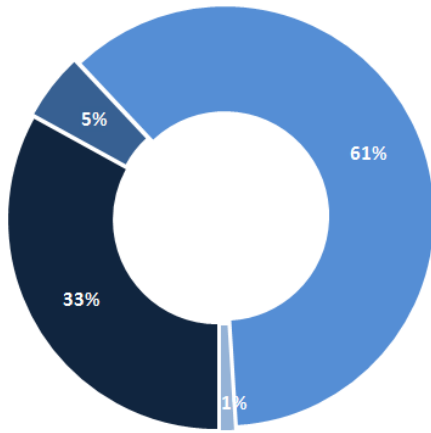
Lebanese : 42539 cases out of 46918 (88%)



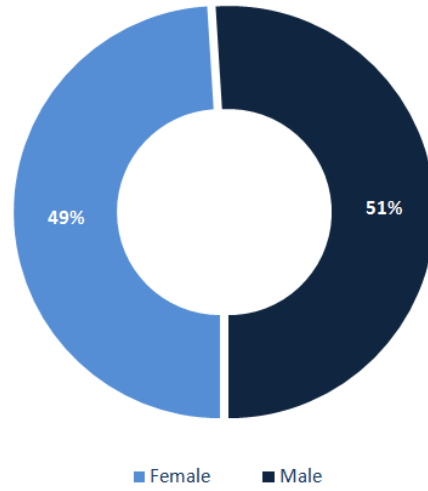
Number of individuals in home isolation and percentage of commitment to isolation



Exposure

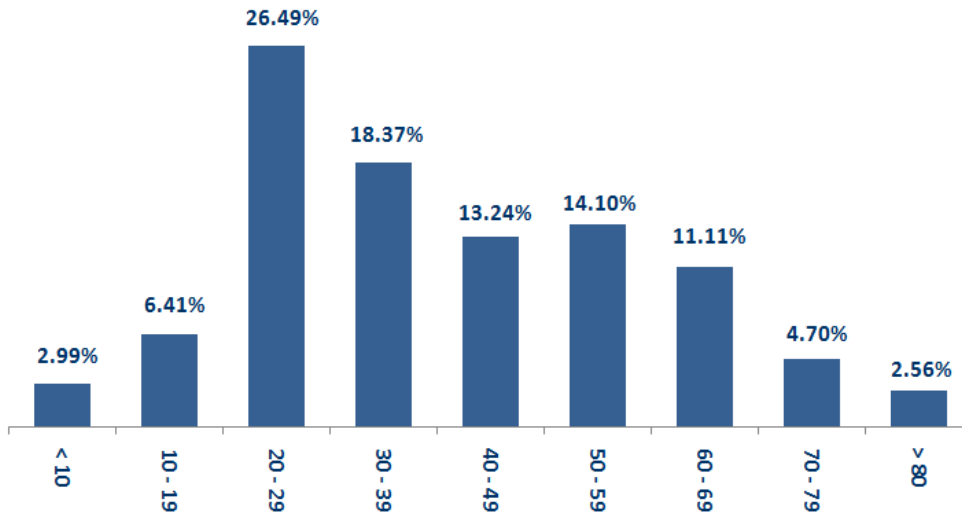


Distribution according to gender



■ Contact with confirmed case ■ Travel related ■ Under investigation ■ Unidentified source

Distribution by age



Decisions and actions taken – 06/10/2020

Ministry of Public Health

The Ministry of Public Health announced that the health situation in Lebanon has become at the height of the second phase of the outbreak of the epidemic, as the occupancy rate of intensive care beds has reached about 70%, noting that the Ministry has started the phase of preparing more intensive care beds in government hospitals.

- The Ministry of Public Health, in its general meeting to assess the epidemiological situation in Lebanon, identified the challenges that hinder achieving control of the spread of the epidemic, the most important of which are:

- The rate of infection in Lebanon is one hundred twenty (120) per 100,000 people per week, and this percentage is considered the peak in the registration of injuries.
- The mortality rate has reached its peak in recent times, at one-point-two percent (1.2%).
- The ability to achieve success in implementing the decision to close the towns and villages in which the epidemic is spreading, which is considered the last opportunity for Lebanon to confront the epidemic.
- The implementation of a plan to raise the level of preparedness of hospitals that were greatly affected by the disaster of the Beirut Port explosion.

- The Ministry of Public Health reported that PCR tests were completed for flights that arrived in Beirut and were conducted at the airport on 10/3/2020, in addition to the first batch of checks for flights that arrived on 10/4/2020, where five (5) new positive cases were recorded. On the following flights:

Arriving from	Company	Flight Number	Number of Positive Cases
2/10/2020			
Irbel	MEA	325	3
Istanbul	MEA	266	1
Baghdad	Iraqi Airways	131	1
Total			5

Lebanese Red Cross

234,025	Number of PCR tests transferred to laboratories	47,527 (510 New)	Number of additional ambulance centers ready to respond	48	ambulance centers	5,427 (39 New)	cases transferred to hospitals
166	Number of volunteers trained to transfer PCR tests	1,498	Number of trained paramedics	8,732	total number of respondents	79,489 (42 New)	number of those benefiting from awareness *sessions
967	The number of university volunteers trained to follow up on prevention measures in companies and institutions	291	Number of university volunteers trained to conduct awareness sessions	550	total LRC volunteers for covid19	8,580 (5 New)	number of trained managers for isolation centers
4,246 (2 New)	Number of beneficiaries from educational electronic platforms COVID-19	95,056 (1456 New)	Number of distributed equipment	1,240,401	total distributed posters, brochures, and flyers on covid19 prevention	583 (3 New)	number of prisons that have been disinfected

General Directorate of State Security

- Reporting cases registered in the various districts and cases in home quarantine.
- Reporting of the towns that committed themselves to implementing the closure decision issued by the Ministry of Interior and Municipalities:
 - Zahle District: Chtaura, Kfar Zabad, Niha, Farzol, Qaa Al-Reem, Ra'it, Rayak, Terbol, and Saadnayel.
 - Western Bekaa District: Ammiq, Mansouriya, Mashghara, Khirbet Qanfar, Gaza.
 - Nabatieh District: Romain.
 - Bint Jbeil District: Bint Jbeil, Rmeish, Shaqra, and Debel.
 - Marjayoun District: Ebel Al-Saqi.
- Notification of the percentage of compliance with the general mobilization decision in the governorates, which came as follows within the past 24 hours:

Beirut	South	North	Akkar	Beqaa	Nabateih	Baalbek Hermel	Mount Leb
27%	60%	66%	46%	80%	43%	43%	44%

General Directorate of Internal Security Forces

- Supporting the municipalities in isolating the town of Aramoun (Aley), the Radisson Hotel in Ain Mreisse (Beirut) and the Golden Tulip Hotel in Hamra (Beirut)
-
- Writing arrest records against violators of the general closure decision

The number of seizure records during the past 24 hours					The total number of records that have been organized against violators of the general mobilization decisions since 03/08/2020		
Written records of violating institutions (absorptive capacity and preventive measures)					3		
Written records of persons violating the decision to wear a mask					2	Beirut	20,650
Written records of people violating the general mobilization decision (Aragil* and social distancing)					54	Mount Leb	18,847
Total					59	Beqaa	8,073
						North	6,803
Beirut	Mount Leb	Beqaa	North	South	South	6,905	
4	31	9	19	0	Total	61,274	

Ministry of Public Works and Transportation

Departing Flights		Arriving Flights	
Number of Flights	40	Number of Flights	39
Number of Departing Individuals	4,610	Number of Arrivals	3,327

Port	Entered			Left		
	Import	Direction	#	Export	Direction	#
Jouneih				Blank	Italy	1
Total						1

General announcements

The Ministry of Interior and Municipalities issued Decision No. 1205 on 10/2/2020 related to the closure of some villages and towns due to their high number of Coronavirus cases, as the decision kept on working at the time of preventing exit and entering the streets and roads between the first hour after midnight until the hour Six o'clock in the morning, the decision also included the closure of **111 towns** in various Lebanese regions based on an analysis of the epidemiological situation in them for a full week, starting from **Sunday 10/4/2020** until **10/12/2020** with specifying exceptions and the implementation mechanism for implementing the decision in cooperation between governors, municipalities and all security agencies.

Note: The decisions can be found at www.drm.pcm.gov.lb

A list of the laboratories accredited by the MoPH to conduct PCR tests

- Demand gatherings and demonstrations.
- Failure to comply with the preventive measures and procedures required in a number of stores and markets (putting on a muzzle or face mask, sterilizing hands, maintaining a safe distance).
- Non-compliance with the 50% occupancy rate in several restaurants and amusement game centers.
- Gatherings for social events.
- Failure of those in contact with confirmed cases to adhere to home isolation procedures until the results of the laboratory tests are issued.

Examples of lack of adherence to safety measures

المختبرات الحكومية المؤهلة إجراء التشخيص المخبري لفيروس كورونا بطريقة الـ RT-PCR

المختبر	الموقع
مستشفى رفيق الحريري الجامعي RHUH	بيروت
مستشفى حيا الحكومي	حيا
مستشفى طرابلس الحكومي	طرابلس
مستشفى البترون الحكومي	البترون
مستشفى فتوح كسروان الحكومي (البوار)	كسروان
مستشفى نبيه بري الحكومي الجامعي	النبطية
مستشفى نينين الحكومي	نينين
مستشفى بنت جبيل الحكومي	بنت جبيل
مستشفى بعطاك الحكومي	بعطاك
مستشفى الرئيس الياس الهراوي الحكومي	زحلة

مختبرات المستشفيات العسكرية

Hôpital Militaire Central	المستشفى العسكري المركزي في بيروت	بيروت
---------------------------	-----------------------------------	-------

المختبرات المؤهلة لأخذ عينات "المسحات الأنفية" بطريقة Drive- thru

مختبر ميديكال دياغنوستيك تريتمانت سنتر (الحمراء)	بيروت
Medical Diagnostic Treatment Center (MDTC)	بيروت
مختبر ميد لاب MedLab SAL CIC ALS (الحمراء - الجبلين)	بيروت
مختبرات عيتاني Itani Medical Laboratories (المزرعة)	بيروت
مختبر أ ب سي ABC Laboratories	الأشرفية
مختبرات معوض الطبية Mouawad Medical Laboratory	التيه
مختبرات الشياح (د. فؤاد ربحان) Rihan Medical Center	التيه
مختبر إكسبيرت لاب Expert Lab	النصيرية
مختبر لايف لاب Life LAB	بعطاك
مستشفى الرياق Riyak Hospital	رياق

المختبرات الخاصة المؤهلة لإجراء التشخيص المخبري لفيروس كورونا بطريقة الـ RT-PCR

المختبر	الموقع
AUBMC مستشفى الجامعة الأميركية	بيروت
Hotel-Dieu de France (HDF) مستشفى أوتيل ديو الجامعي	بيروت
مختبرات رودولف ميريو (الجامعة اليسوعية - المتحف) Laboratoire Rodolphe Mérieux (Université Saint-Joseph)	بيروت
Saint-George Hospital - UMC مستشفى القديس جاورجيوس الجامعي	بيروت
Makassed General Hospital مستشفى المقاصد	بيروت
LAU Medical Center - Rizk Hospital مستشفى رزق الجامعي	بيروت
Hôpital Libanais Geitawi - CHU مستشفى اللبناني الجعيتاوي الجامعي	بيروت
Hôpital Notre-Dame du Rosaire مستشفى الوردية	بيروت
Doctor 's Center مختبر مركز الأطباء	بيروت
Fontana Laboratories مختبر فونتانا (الحمرا)	بيروت
مختبر الأمن العام (العنابية)	بيروت
Laboratoire Jabre-Ghorra مختبرات جبر وغرة	بيروت
Saint Marc Medical & Diagnostic Center مختبر السان مارك	بيروت
Laboratoire Moderne (Modern Lab- Berjaoui) المختبرات الحديثة	الغبيوي
Sahel General Hospital (SGH) مستشفى الساحل	الغبيوي
مستشفى الزهراء الجامعي	الغبيوي
Al Zahraa Hospital - UMC مستشفى الرسول الأعظم	برج الراجحة
مستشفى بهمن	
Al Rassoul Al Aazam Hospital Bahman Hospital	حارة حريك
مختبر ناتيونال دياغنوستك سرفيس كومباني National Diagnostic Services Company (NDSC)	حارة حريك
Medical Diagnostic Center مختبر الدكتور محمود عثمان - مركز التحاليل الطبية	البرجة
American Diagnostic Center (ADC) مختبر أميريكين دياغنوستك سنتر	الجناح
Mount Lebanon Hospital مستشفى جبل لبنان	بعنا
Hôpital Saint-George – Hadath مستشفى السان جورج الحدث	بعنا
Al Hadi Laboratory مختبر الهادي	بعنا
INOIE-Liban مختبر	بعنا

Hôpital du Sacré- Coeur مستشفى قلب يسوع	الحازمية
Clinigene مختبر كلينوجان	الحازمية
Hôpital Dr.Samir Serhal مستشفى سرحال	المن
Transmedical for Life مختبر ترانس ميديكال فور ليف	المن
Haroun Hospital مستشفى هارون	الزلفا
Bellevue Medical Center (BMC) مستشفى بلغو	المنصورة
Hôpital Albert Haykal مستشفى هيكال	الكورة
Centre Hospitalier du Nord (CHN) مركز الشمال الإستشفائي	زغرتا
Mazloum Hospital مستشفى المظلوم	طرابلس
Al Mounla Hospital مستشفى المنلا	طرابلس
Nini Hospital مستشفى النيني	طرابلس
مختبر ميكروبيولوجيا الصحة والبيئة LMSE - المعهد العالي للدكتوراه، الجامعة اللبنانية	طرابلس
CHU - Notre-Dame des Secours مستشفى سيدة المعونات الجامعي	جبل
Lab Akiki & Boulos مختبر عقيقي وبولس	جبل
Centre Médical Wakim مختبر واكيم	جولية
Ain Wazein Hospital مستشفى عين وزين	الشوف
Hammoud Hospital UMC مستشفى حمود الجامعي	صيدا
Al Karim Medical Laboratory (KML) مختبر الكريم	صيدا
Sheikh Ragheb Harb Hospital مستشفى الشيخ راجب حرب	البيشة
Sabbah Diagnostic Center (SDC) مختبر السباح	البيشة
Jabal Amel Hospital مستشفى جبل عامل	صور
Mashrek Diagnostic Center (MDC) مختبر المشرق	صور
Dar Al Amal University Hospital مستشفى دار الأمل الجامعي	بعلبك
Khoury General Hospital مستشفى خوري	زحلة
Medical Care Center (MCC) مختبر ميديكال كير سنتر	زحلة