



## Lebanon National Operations Room Daily Report on COVID-19

Monday, October 05, 2020

Report #201

Time Published: 11:30 PM

New:

9 isolation centers that have been equipped in various Lebanese regions host 99 positive cases. More information about the locations of isolation centers and their occupancy rate is available on the link

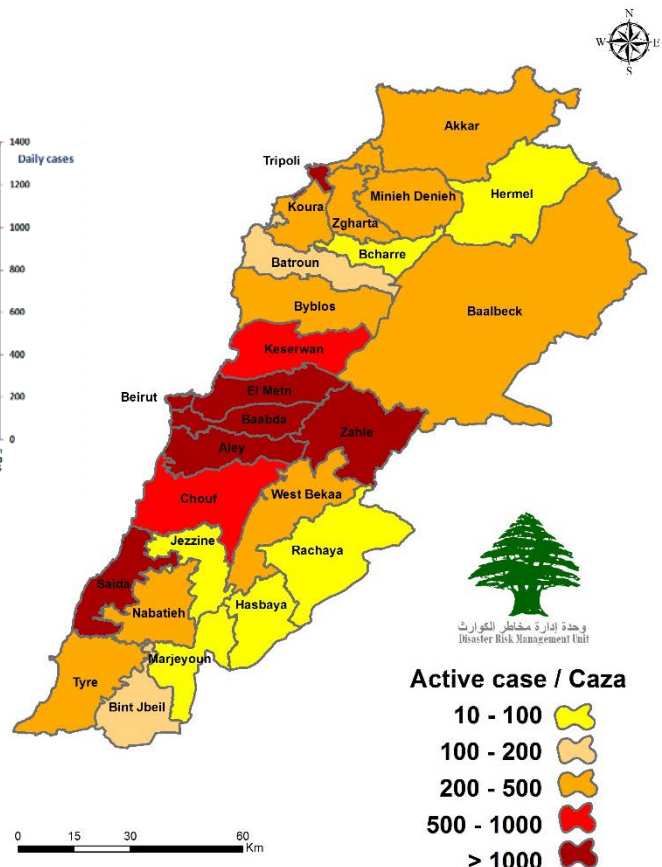
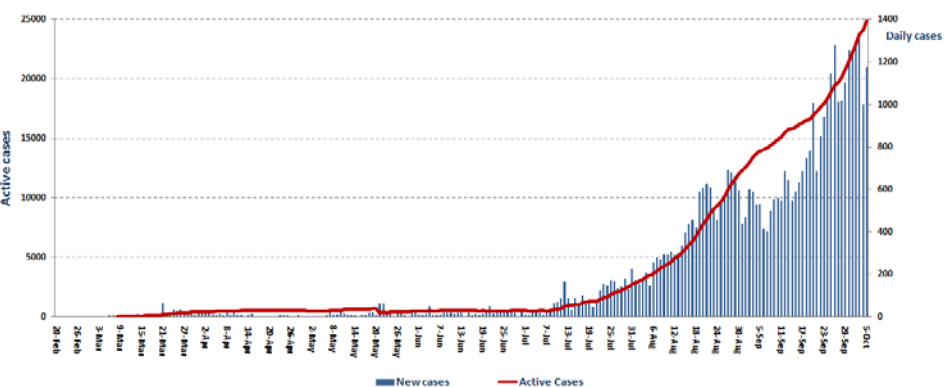
<http://bit.ly/DRM-IsolationCentersProfiles>

<b>1,175</b> New Cases		<b>45,657</b> Total Cases since 21.2.2020		<b>414</b> Total Deaths		<b>20,243</b> Total Recovered	
1,160 Residents	15 Expats	43,936 Residents	1,721 Expats	<b>8</b> New Deaths		<b>461</b> New Recovered	
<b>1,087</b> Total Cases in the Health Sector		<b>25,000</b> Total Active Cases		<b>624</b> Hospitalized Cases		<b>167</b> Total Cases in ICU	
<b>9</b> New Cases in the Health Sector		<b>24,376</b> Cases in Home Isolation		<b>457</b> Mild Cases		<b>2</b> New Cases in ICU	
<b>857,527</b> COVID-19 Tests since 21.2.2020		Lebanon Status compared to the World					
<b>1,052</b> COVID-19 Tests at Airport within 24 hrs.		<b>5,651</b> COVID-19 tests for residents within 24 hrs.		Total Cumulative		35,528,171	
				Total Deaths		1,043,519	
				Deaths percentage		2.93%	
				Total recoveries		26,722,410	

Ref: Ministry of Public Health Data

### Number of Cases by Location

- 8,387 case is Under investigation



Beirut	98
Ein El Mreisseh	2
Ras Beirut	3
Qreitem	3
Raouche	4
Hamra	12
Mseitbeh	5
Wata El Mseitbeh	1
Mar Elias	2
Zarif	2
Mazraa	8
Borj Abi Haidar	3
Basta Fawka	3
Tariq Jdideh	13
Ras El Nabee	10
Basta Tahta	1
Mar Mkhael El Nahr	3
Rmeil	1
Ashrafieh	17
Others	5
Baabda	127
Chiah	10
Jnah	1
Ouzai	2
Bir Hassan	5
Ghobeiry	4
Chiah-Ein El Rimaneh	5
Forn El Shubbak	3
Haret Hreik	25
Lailaki	5
Borj El Narajneh	16
Mreijeh	3
Tahweetet El Ghadir	3
Baabda	7
Hazmieh	7
Hadat	14
Botchay	1
Bsaba	2
Dhour El Abadieh	1
Kobbeh	1
Zandouka	1
Falougha	1
Others	10
Batroun	8
Batroun	1
Shekka	2
Jran Al Batroun	1
Kfarhetna	1
Rashkedda	1
Hamat	1
Others	1
Bint Jbeil	7
Bint Jbeil	1
Rmeish	1
Shakra	1
Beit Yahoun	1
Debel	3

Chouf	48
Damour	2
Mazboud	1
Ketermaya	1
Siblin	1
Barja	6
Ein El Hor	1
Jiyeh	1
Wady El Zayneh	2
Deir El Qamar	1
Semqanieh	4
Maaser Beit El Deen	1
Warhanieh	3
Freidees	2
Baaqleen	6
Jahlieh	1
Botmeh	1
Baqaata	2
Niha	1
Khreibeh	1
Bater	1
Others	9
Aley	48
El Amroussieh	2
Hay El Sillom	7
Khaldeh	4
Al Oumara	10
Deir Qoubel	1
Aramoun	7
Mouwenseh	1
Baawarta	1
Bshamoun	3
Ein Anoub	2
Bsous	1
Aley	3
Baysour	2
Kfarmatta	1
Bhamdoun	1
Others	2
Koura	9
Amyoun	1
Bzeeza	1
Ras Masqa	3
Dahr el Ein	1
Barsa	1
Nakhle	1
Others	1
Zghorta	5
Kfarhata	1
Hara Jadidah	1
Alma	1
Mezyara	1
Meryata	1
Hasbayya	1
Marj Al Zouhour	1
Menyeh Denniyyeh	6
Menyeh	3
Others	3

Kesrwen	81
Kaslik	2
Zouk Michael	12
Nahr El Kalb	1
Haret El Meer	1
Ghadir	6
Zouk Mosbeh	7
Adonis	7
Haret Sakher	3
Sahel Alma	3
Kfar Yassine	1
Tabarja	4
Adma & Dafneh	1
Safra	3
Oqaybeh	2
Ajaltoun	3
Ballouneh	1
Sehaileh	2
Darayya	1
Ein EL Rihaneh	1
Ghazir	2
Kfar Hbab	2
Bayader BorjFtouh	1
Chnaniir	2
Ghosta	2
Kfour	1
Rayfoun	1
Qleiaat	1
Ashkout	5
Hrajel	1
Faraya	1
Others	1
Byblos	28
Byblos	4
Mastita	2
Amchit	8
Halat	1
Nahr Ibrahim	1
Adonis	1
Zebdeen	2
Kharbeh	1
Abaydat	2
Hboub	1
Gherfeen	3
Feghal	1
Others	1
Tripoli	54
Tal	1
Jesren	1
Qebbeh	3
Zahrieh	3
Mina	17
Bsatin El Mina	5
Qalamoun	2
Beddawy	2
Beddawy Camp	2
Others	18

Matn	185
Borj Hammoud	14
Nabaa	2
Sin El Fil	10
Horsh Tabet	3
Jesr El Basha	1
Jdeidet El Metn	9
Bouchrieh	3
Dora	7
Rawda	1
Sabtieh	8
Dekwene	18
Antelias	10
Jal El Dib	9
Naqqash	2
Zalka	5
Byaqout	5
Dbayyeh	3
Mansouriyye	3
Dayshouniyeh	1
Fanar	9
Ein Saadeh	14
Bsalim	4
Mteileb	1
Rabieh	2
QornetChehwan	1
Rabwe	3
Beit El Char	5
Deek El Mahdi	5
Mazraet Yashuh	5
Bekfaya	2
Ein Alak	2
Atshana	1
Broummana	5
Baabdat	2
Ein El Safsaf	1
Ma Mousa Dwar	1
Others	8
Saida	74
Saida Qadeemah	6
Haret Saida	5
Ein El Helwe	9
Salhieh	2
Majdlyoun	1
Abra	8
Bqosta	3
Ghazieh	4
Darb El Seem	1
Adloun	2
Bablieh	1
Sarafand	3
Addousieh	1
Arky	1
Anqoun	2
Kafar Melky	5
Others	20

Akkar	40
Halba	2
Menyara	1
Zouk Al Habalsa	1
Iyat	1
Akkar Al Atika	2
Hoshab	1
Tal Hmayra	1
Abboudieh	1
Bebnin	1
Mhammara	1
Nahr El Bared	3
Abdeh	1
Qebeet	1
Meshmesh	1
Fneidek	4
Majdala	2
Rayhanieh	1
Qbayyat	8
Andkit	1
Wady Khaled	1
Akroum	1
Others	4

Zahle	85
Hoch El Zaraaneh	2
Rashsieh	3
Barbara	1
Maallaqa	7
Hoch El Oumara	5
Forzol	2
Ablah	1
Qaa El Reem	1
Niha	1
Ksara	3
Chtoura	2
Taalabaya	6
Saadnayel	9
Qab Elias	6
Bouarej	4
Bar Elias	8
Majdel Anjar	1
Riyak	1
Terbol	1
Ein Kfarzabad	1
Others	20

Nabatieh	13
Nabatieh El Tahta	1
Shoukeen	2
Habboush	1
Kfar Tebneet	2
Arab Salim	2
Houmeen Al Tahta	3
Toul	1
Jebsheet	3
Mayfadoun	1
Adsheet Al Shkeef	1
Ansar	1
Qoseibek	1
Others	1
Marjeyoun	7
Houla	1
Markaba	1
Meis Al Jabal	3
Majdel Selem	1
Others	1

Tyre	30
Rasheedieh	2
Borj Al Shimali	4
Yanouh	1
Maarakeh	3
Bazourieh	2
Hennawayh	1
Zebna shehabeh	1
Tora	1
Abbasieh	6
Naqoura	1
Others	8
Western Bekaa	7
Mashghara	1
Kherbet Kanafar	1
Marej	1
Establ El Rawda	1
Others	3
Baalbak	2
Baalbak	1
Taraya	1
Others	205

### The number of beds available for those infected with Coronavirus and the occupancy rate

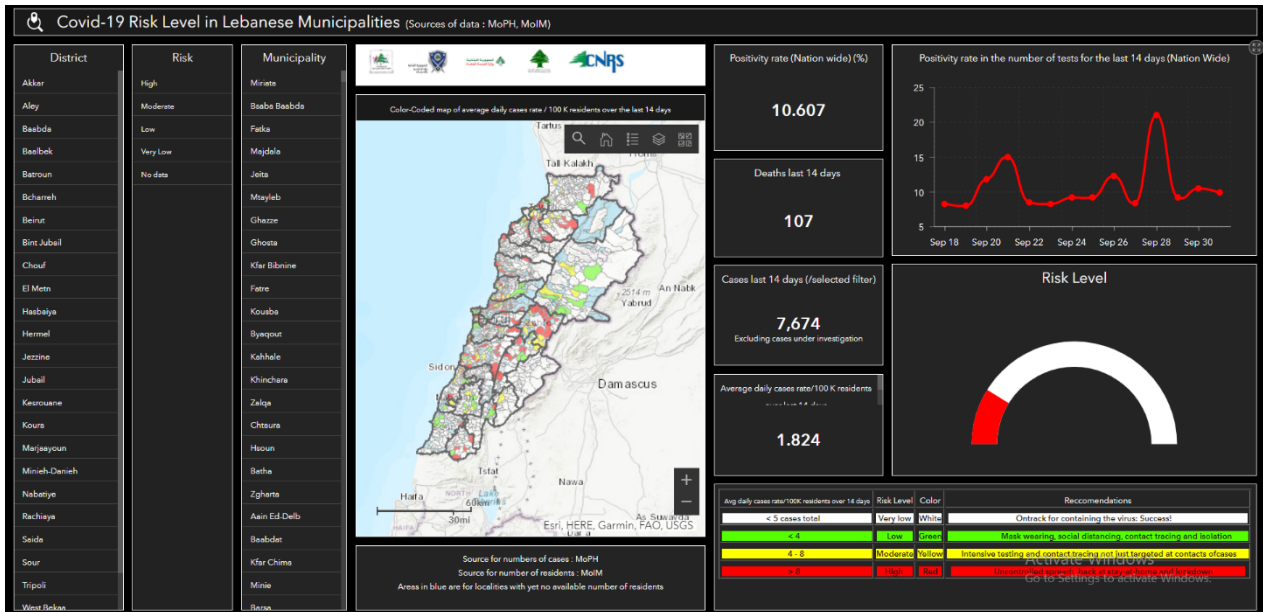


For daily information on all the details of the bed distribution available for Covid-19 patients in the various governorates according to the hospitals:

Computer: <https://bit.ly/DRM-HospitalsOccupancy-PC>

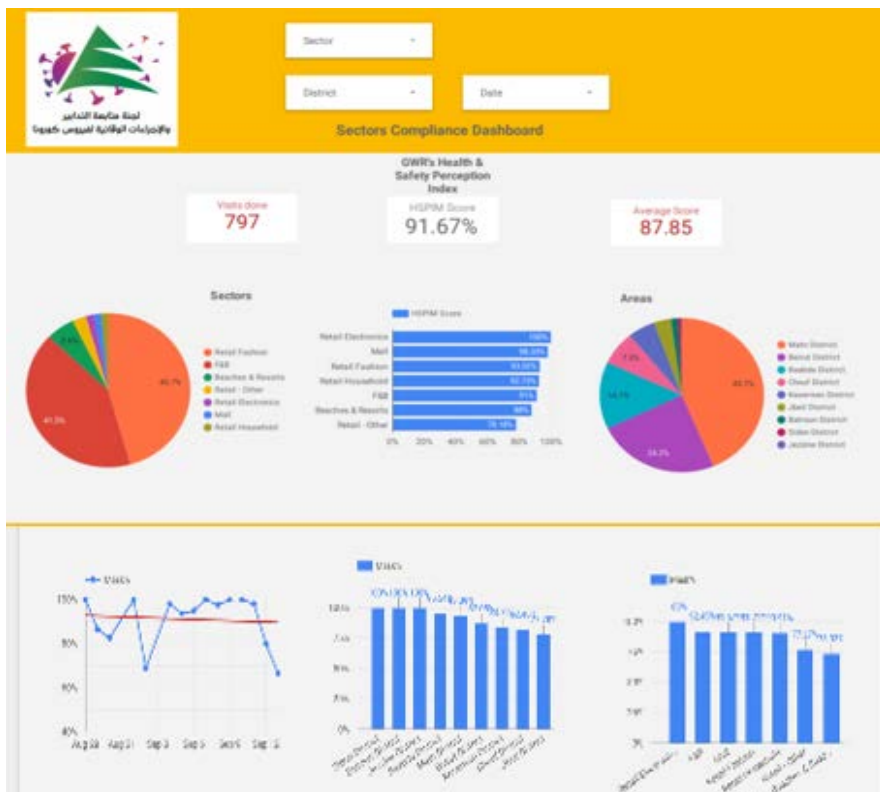
By phone: <https://bit.ly/DRM-HospitalsOccupancy-Mobile>

## The Online platform to measure the level of risk of the spread of the new Corona virus by district



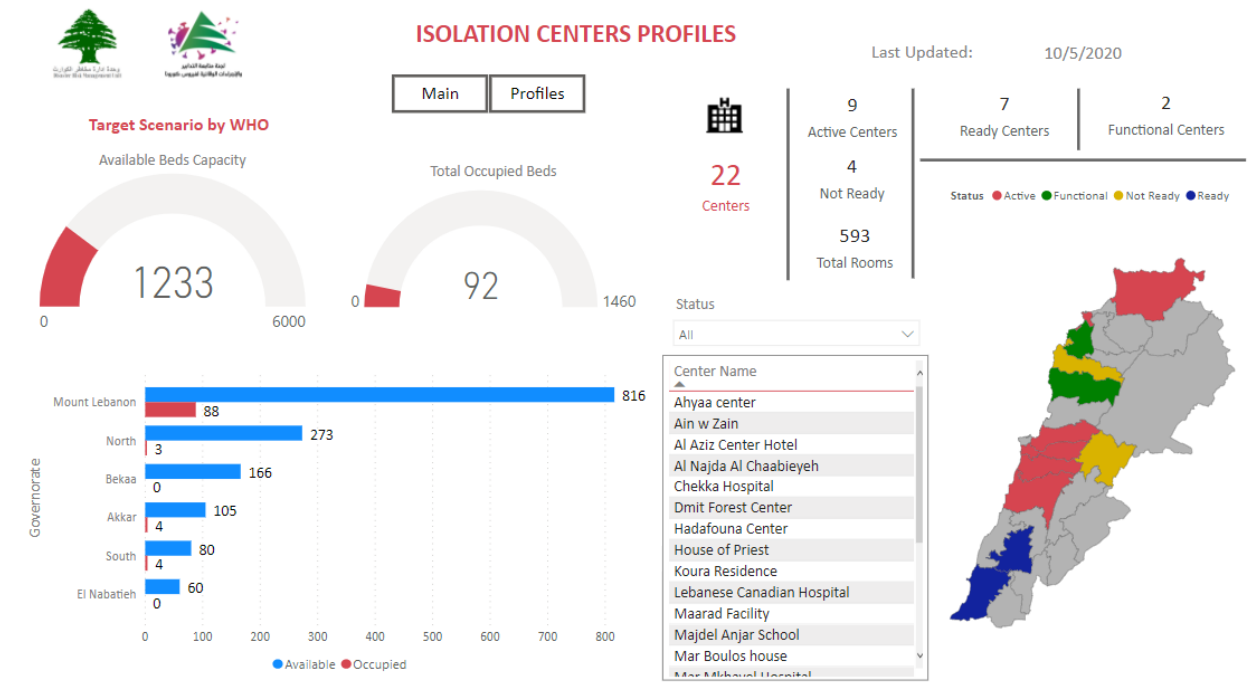
This interactive platform allows you to know the level of risk of spreading the kurna virus according to districts, based on the number of cases registered daily and the number of residents in each district. For more information on a daily basis, you can access the following link:  
<https://bit.ly/DRM-RiskLevelInMunicipalities>

## Online platform to track sector commitment in general mobilization procedures



Based on the recommendation issued by the National Committee for Follow-up of Preventive Measures and Measures to Confront the Coronavirus to open all sectors, provided that the general mobilization procedure (safe distance, muzzle, and hand sterilization) be applied, a special electronic platform was created that allows monitoring and measuring the percentage of commitment by various sectors on an ongoing basis. The detailed results can be viewed directly at the following link:  
<http://bit.ly/covidsectordata>

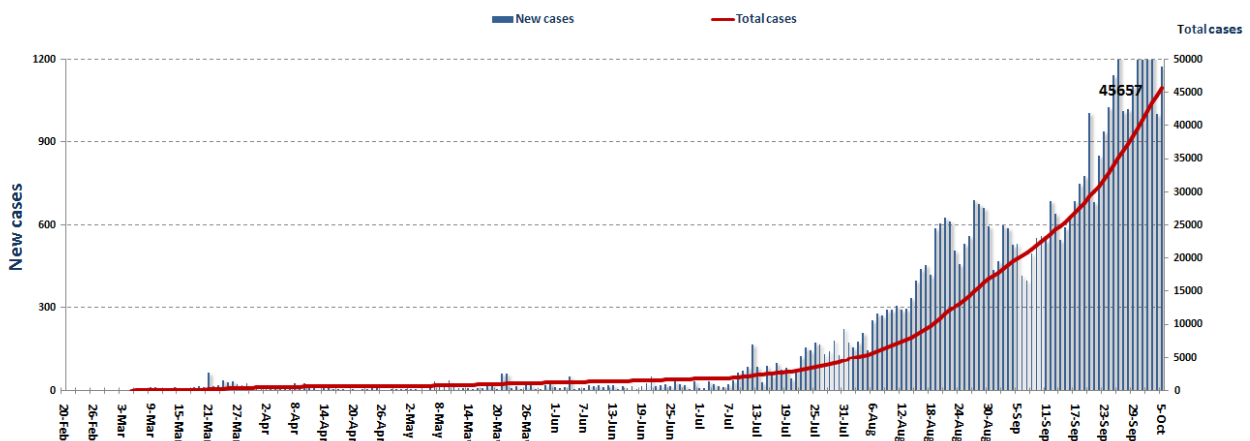
## Occupancy rate of isolation centers for cases infected with Coronavirus



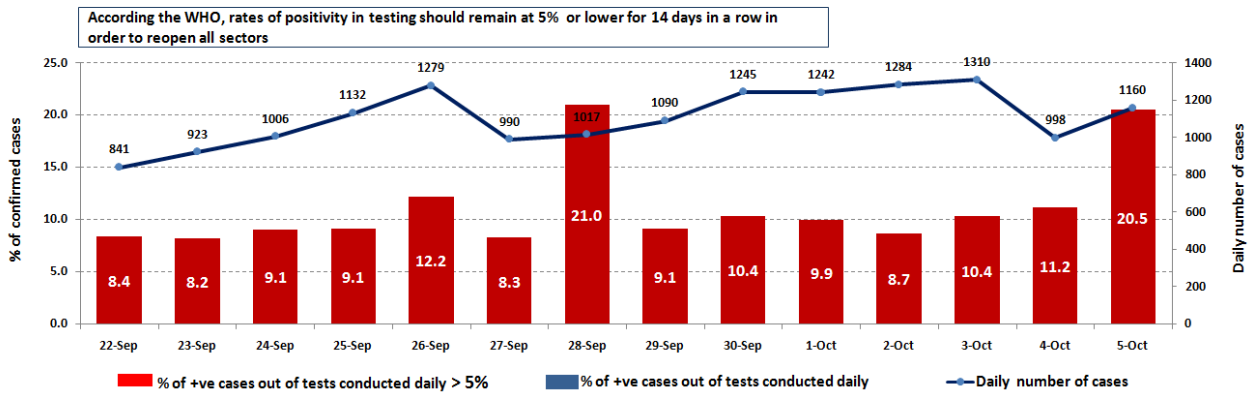
For more information about the isolation centers' distribution and the percentage of their occupancy, enter the following link: <http://bit.ly/DRM-IsolationCentersProfiles>

Note: These centers have been equipped in cooperation between the National Committee for Follow-up of Preventive Measures and Measures to Confront the Coronavirus and Governors and Municipalities, the United Nations Development Program, the World Health Organization, UNICEF, the Ministry of Public Health, the Syndicate of Nurses in Lebanon and the Syndicate of Specialists in Social Work.

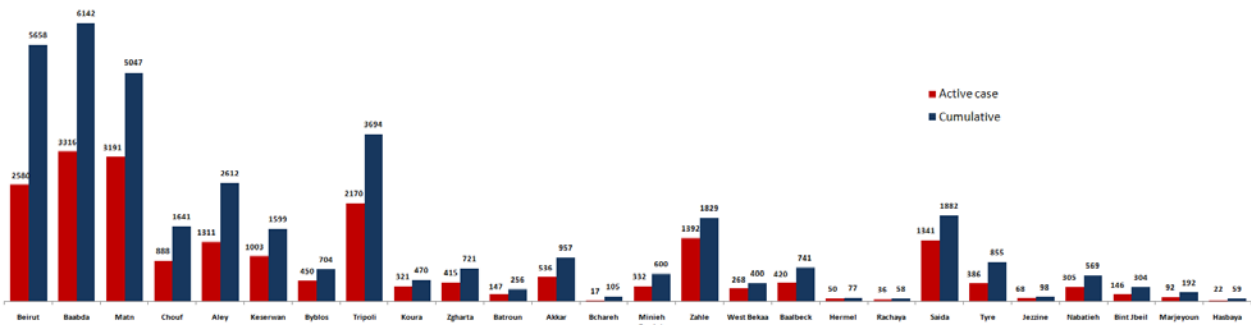
## Cases per day



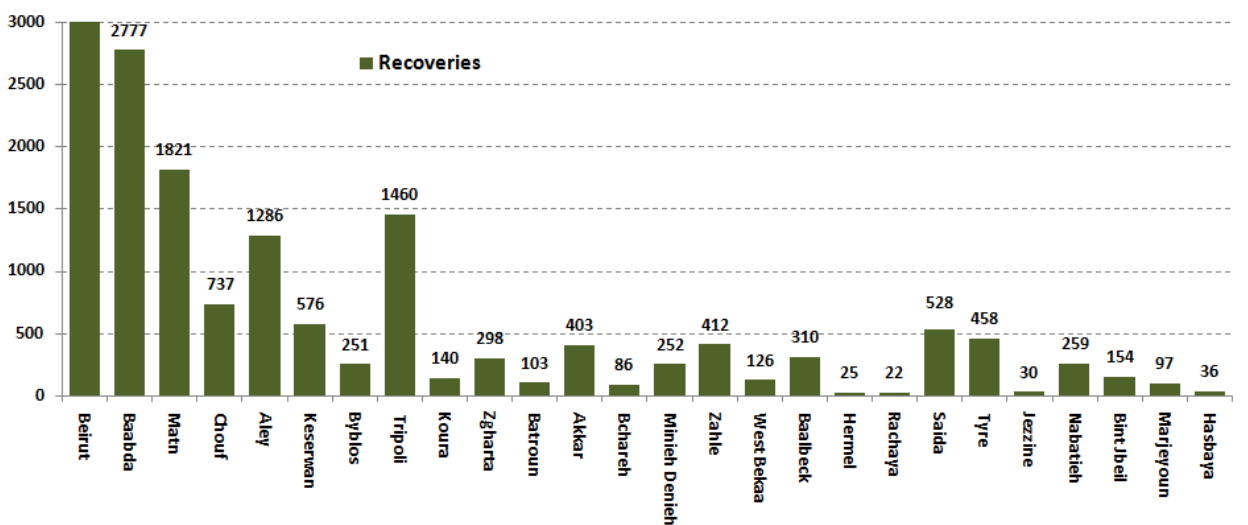
## The percentage of positive cases out of the number of daily checks (22 September to 05 October 2020)



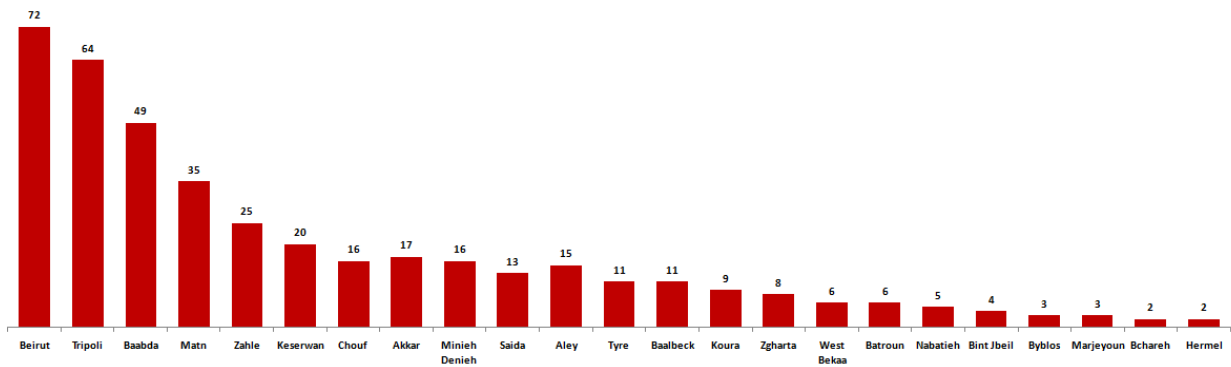
## Distribution of Active Cases by Districts



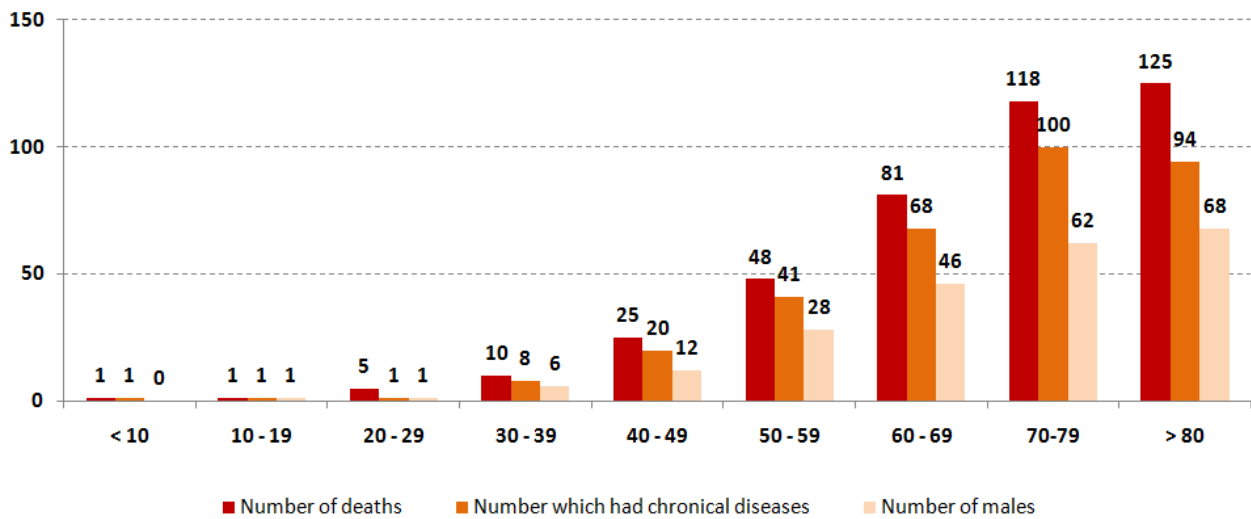
## Recoveries



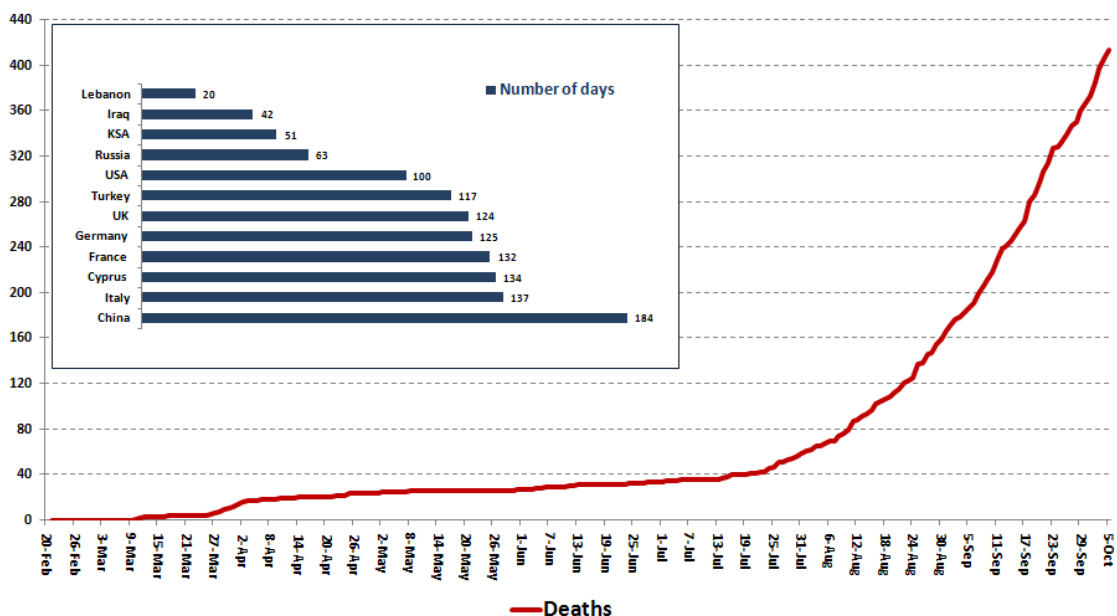
## Distribution of deaths by Governorates



## Distribution of deaths by Age



## Comparison of the rate of doubling of the number of deaths in Lebanon with other countries (death doubling rate)



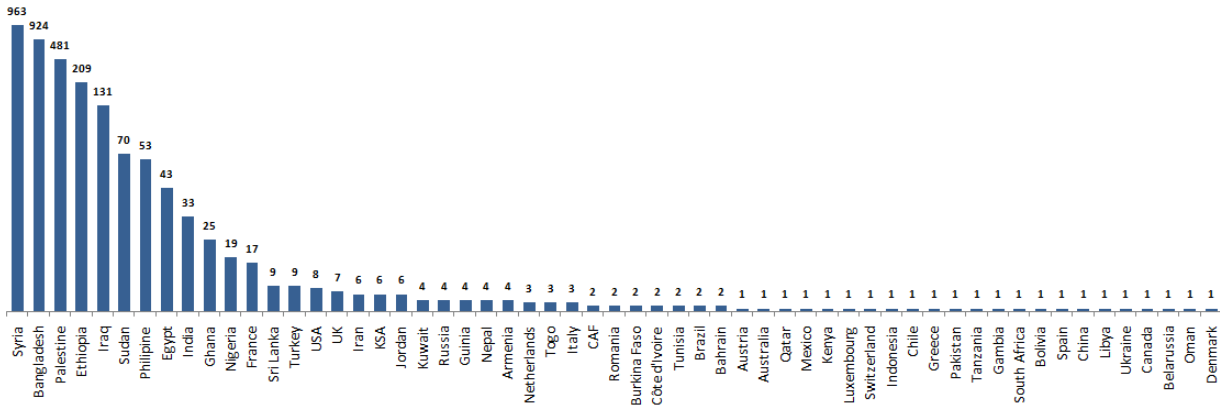


**The distribution of the recorded deaths during the past 24 hours**

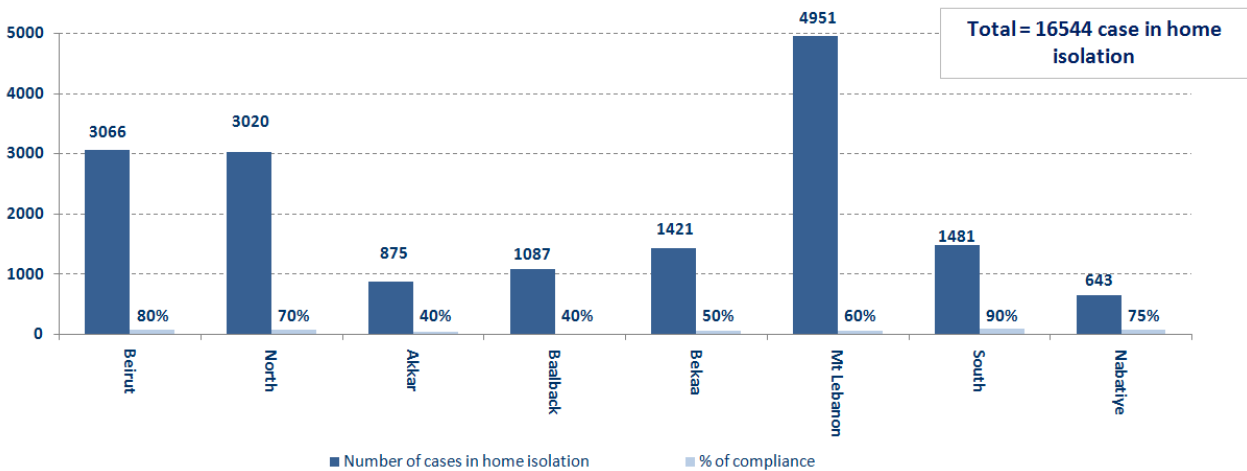
Hospital	Residence	Gender	Age	Chronic
Harire Gov.	Minieh Denieh	Male	62	Yes
Harire Gov.	Saida	Female	24	Yes
Home	Baabda	Male	76	Yes
Ain w Zain	Aley	Male	72	Yes
Ain w Zain	Aley	Male	87	Yes
Bint Jbeil	Sour	Male	75	Yes
Seblin	Beirut	Female	85	Yes
Dar Chefaa	Akkar	Male	72	No

**Distribution of cases by nationality**

Lebanese : 41278 cases out of 45657 (88%)



**Number of individuals in home isolation and percentage of commitment to isolation**

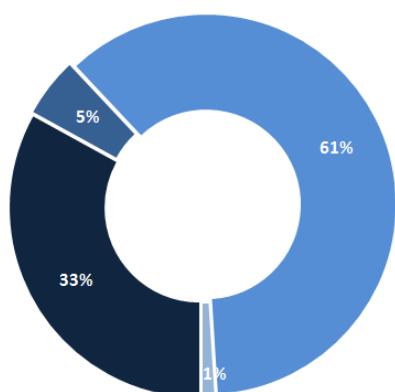




---

---

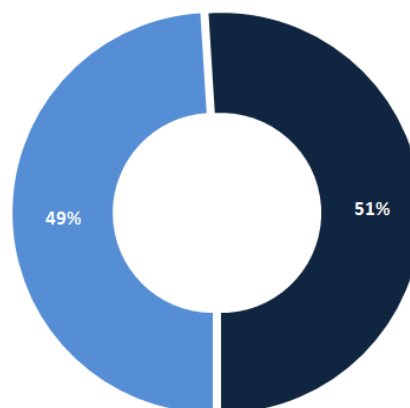
### Exposure



---

---

### Distribution according to gender



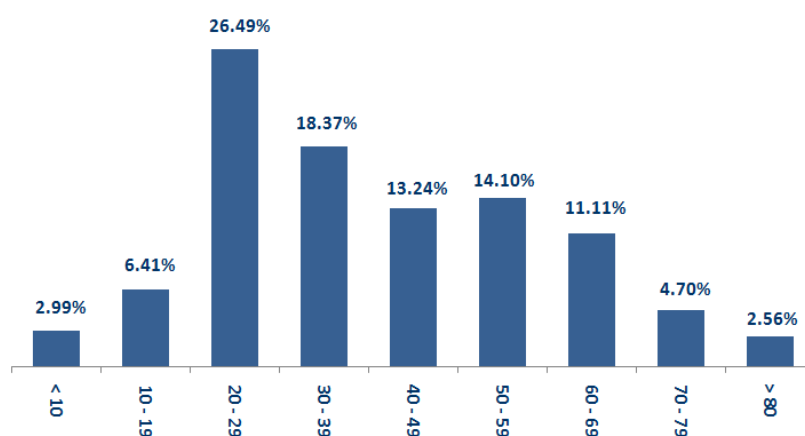
■ Female ■ Male

■ Contact with confirmed case ■ Travel related ■ Under investigation ■ Unidentified source

---

---

### Distribution by age



---

---

### Decisions and actions taken – 05/10/2020

---

---

#### Ministry of Public Health

The Ministry of Public Health announced that the health situation in Lebanon has become at the height of the second phase of the outbreak of the epidemic, as the occupancy rate of intensive care beds has reached about 70%, noting that the Ministry has started the phase of preparing more intensive care beds in government hospitals. - The Ministry of Public Health, in its general meeting to assess the epidemiological situation in Lebanon, identified the challenges that hinder achieving control of the spread of the epidemic, the most important of which are:

- The rate of infection in Lebanon is one hundred twenty (120) per 100,000 people per week, and this percentage is considered the peak in the registration of injuries.
- The mortality rate has reached its peak in recent times, at one-point-two percent (1.2%).
- The ability to achieve success in implementing the decision to close the towns and villages in which the epidemic is spreading, which is considered the last opportunity for Lebanon to confront the epidemic.
- The implementation of a plan to raise the level of preparedness of hospitals that were greatly affected by the disaster of the Beirut Port explosion.

The Ministry of Public Health reported that PCR tests were completed for flights that arrived in Beirut and were conducted at the airport on 10/2/2020, in addition to the first batch of flight checks that arrived in Beirut on 10/3/2020, where fifteen (15) positive cases were recorded. New ones distributed over the following trips:

Arriving from	Company	Flight Number	Number of Positive Cases
2/10/2020			
Istanbul	Turkish Airlines	826	3
Dubai	Emirates	957	2
Damam	MEA	443	1
3/10/2020			
Istanbul	PEGASUS	756	2
Abidjan	MEA	572	2
Istanbul	MEA	286	1
Baghdad	Iraqi Airways	131	1
Baghdad	Iraqi Airways	301	3
<b>Total</b>			<b>15</b>

---

### Lebanese Red Cross

---

233,855	Number of PCR tests transferred to laboratories	47,527 (510 New)	Number of additional ambulance centers ready to respond	48	ambulance centers	5,427 (39 New)	cases transferred to hospitals
166	Number of volunteers trained to transfer PCR tests	1,498	Number of trained paramedics	8,732	total number of respondents	79,396 (42 New)	number of those benefiting from awareness *sessions
967	The number of university volunteers trained to follow up on prevention measures in companies and institutions	291	Number of university volunteers trained to conduct awareness sessions	550	total LRC volunteers for covid19	8,575	number of trained managers for isolation centers
4,245 (2 New)	Number of beneficiaries from educational electronic platforms COVID-19	93,600 (158 New)	Number of distributed equipment	1,240,401	total distributed posters, brochures, and flyers on covid19 prevention	580 (3 New)	number of prisons that have been disinfected

## General Directorate of State Security

- Reporting cases registered in the various districts and cases in home quarantine.
- Reporting of the towns that committed themselves to implementing the closure decision issued by the Ministry of Interior and Municipalities:
  - Zahle District: Chtaura, Kfar Zabad, Niha, Farzol, Qaa Al-Reem, Ra'it, Rayak, Terbol, and Saadnayel.
  - Western Bekaa District: Ammiq, Mansouriya, Mashghara, Khirbet Qanfar, Gaza.
  - Nabatieh District: Romain.
  - Bint Jbeil District: Bint Jbeil, Rmeish, Shaqra, and Debel.
  - Marjayoun District: Ebel Al-Saqi.
- Notification of the percentage of compliance with the general mobilization decision in the governorates, which came as follows within the past 24 hours:

Beirut	South	North	Akkar	Beqaa	Nabateih	Baalbek Hermel	Mount Leb
30%	55%	60%	50%	80%	45%	5%	30%

## General Directorate of Internal Security Forces

- Supporting the municipalities in isolating the town of Aramoun (Aley), the Radisson Hotel in Ain Mreisse (Beirut) and the Golden Tulip Hotel in Hamra (Beirut)
- 
- Writing arrest records against violators of the general closure decision

The number of seizure records during the past 24 hours					The total number of records that have been organized against violators of the general mobilization decisions since 03/08/2020		
Written records of violating institutions (absorptive capacity and preventive measures)					3		
Written records of persons violating the decision to wear a mask					2	Beirut	20,650
Written records of people violating the general mobilization decision (Aragil* and social distancing)					54	Mount Leb	18,847
<b>Total</b>					<b>59</b>	Beqaa	8,073
						North	6,803
Beirut	Mount Leb	Beqaa	North	South	South	6,905	
4	31	9	19	0	<b>Total</b>	<b>61,274</b>	

## Ministry of Public Works and Transportation

Departing Flights		Arriving Flights	
Number of Flights	48	Number of Flights	44
Number of Departing Individuals	5,124	Number of Arrivals	4,314

Port	Entered			Left		
	Import	Direction	#	Export	Direction	#
Beirut	Battleship	Forces	1	Oil gas	Jeyyeh	1
Zahrani	Oil gas	Beirut	1			
Jbeil	Diesel	Beirut	1	Blank	Turkey	1
Jouneih	Diesel	Beirut	1			
<b>Total</b>			<b>4</b>			<b>2</b>

## General announcements

The Ministry of Interior and Municipalities issued Decision No. 1205 on 10/2/2020 related to the closure of some villages and towns due to their high number of Coronavirus cases, as the decision kept on working at the time of preventing exit and entering the streets and roads between the first hour after midnight until the hour Six o'clock in the morning, the decision also included the closure of **111 towns** in various Lebanese regions based on an analysis of the epidemiological situation in them for a full week, starting from **Sunday 10/4/2020** until **10/12/2020** with specifying exceptions and the implementation mechanism for implementing the decision in cooperation between governors, municipalities and all security agencies.

**Note: The decisions can be found at [www.drm.pcm.gov.lb](http://www.drm.pcm.gov.lb)**

## A list of the laboratories accredited by the MoPH to conduct PCR tests

- Demand gatherings and demonstrations.
- Failure to comply with the preventive measures and procedures required in a number of stores and markets (putting on a muzzle or face mask, sterilizing hands, maintaining a safe distance).
- Non-compliance with the 50% occupancy rate in several restaurants and amusement game centers.
- Gatherings for social events.
- Failure of those in contact with confirmed cases to adhere to home isolation procedures until the results of the laboratory tests are issued.

## Examples of lack of adherence to safety measures

### المختبرات الحكومية المؤهلة إجراء التشخيص المخبري لفيروس كورونا بطريقة الـ RT-PCR

المختبر	الموقع
مستشفى رفيق الحريري الجامعي RHUH	بيروت
مستشفى حيا الحكومي	حيا
مستشفى طرابلس الحكومي	طرابلس
مستشفى البترون الحكومي	البترون
مستشفى فتوح كسروان الحكومي (البوار)	كسروان
مستشفى نبيه بزي الحكومي الجامعي	النبطية
مستشفى نينين الحكومي	نينين
مستشفى بنت جبيل الحكومي	بنت جبيل
مستشفى بعطاك الحكومي	بعطاك
مستشفى الرئيس الياض الهراوي الحكومي	زحلة

### مختبرات المستشفيات العسكرية

Hôpital Militaire Central	المستشفى العسكري المركزي في بيروت	بيروت
---------------------------	-----------------------------------	-------

### المختبرات المؤهلة لأخذ عينات "المسحات الأنفية" بطريقة Drive- thru

مختبر ميديكال دياغنوستيك تريتمانت سنتر (الحمراء)	بيروت
Medical Diagnostic Treatment Center (MDTC)	بيروت
مختبر ميد لاب MedLab SAL CIC ALS (الحمراء – الجفيلور)	بيروت
مختبرات عيتاني Itani Medical Laboratories (المزرعة)	بيروت
مختبر أ ب سي ABC Laboratories	الأشرفية
مختبرات معوض الطبية Mouawad Medical Laboratory	التيه
مختبرات الشياح (د. فؤاد ربحان) Rihan Medical Center	التيه
مختبر إكسبيرت لاب Expert Lab	النصيرية
مختبر لايف لاب Life LAB	بعطاك
مستشفى الرياق Riyak Hospital	رياق

المختبرات الخاصة المؤهلة لإجراء التشخيص المخبري لفيروس كورونا بطريقة الـ RT-PCR

المختبر	الموقع
AUBMC مستشفى الجامعة الأميركية	بيروت
Hotel-Dieu de France (HDF) مستشفى أوتيل ديو الجامعي	بيروت
مختبرات رودولف ميريو (الجامعة اليسوعية - المتحف) Laboratoire Rodolphe Mérieux (Université Saint-Joseph)	بيروت
Saint-George Hospital - UMC مستشفى القديس جاورجيوس الجامعي	بيروت
Makassed General Hospital مستشفى المقاصد	بيروت
LAU Medical Center - Rizk Hospital مستشفى رزق الجامعي	بيروت
Hôpital Libanais Geitawi - CHU مستشفى اللبناني الجعيتاوي الجامعي	بيروت
Hôpital Notre-Dame du Rosaire مستشفى الوردية	بيروت
Doctor 's Center مختبر مركز الأطباء	بيروت
Fontana Laboratories مختبر فونتانا (الحمرا)	بيروت
مختبر الأمن العام (العناتية)	بيروت
Laboratoire Jabre-Ghorra مختبرات جبر وغزة	بيروت
Saint Marc Medical & Diagnostic Center مختبر السان مارك	بيروت
Laboratoire Moderne (Modern Lab- Berjaoui) المختبرات الحديثة	الغبيوي
Sahel General Hospital (SGH) مستشفى الساحل	الغبيوي
مستشفى الزهراء الجامعي	الغبيوي
Al Zahraa Hospital - UMC مستشفى الرسول الأعظم	برج الراجحة
مستشفى بهمن	
Al Rassoul Al Aazam Hospital Bahman Hospital	حارة حريك
مختبر ناتيونال دياغنوستك سرفيس كومباني National Diagnostic Services Company (NDSC)	حارة حريك
Medical Diagnostic Center مختبر الدكتور محمود عثمان - مركز التحاليل الطبية	البرجة
American Diagnostic Center (ADC) مختبر أميريكين دياغنوستك سنتر	الجناح
Mount Lebanon Hospital مستشفى جبل لبنان	بعنا
Hôpital Saint-George – Hadath مستشفى السان جورج الحدث	بعنا
Al Hadi Laboratory مختبر الهادي	بعنا
INOVIE-Liban مختبر	بعنا

Hôpital du Sacré- Coeur مستشفى قلب يسوع	الحازمية
Clinigene مختبر كلينوجان	الحازمية
Hôpital Dr.Samir Serhal مستشفى سرحال	المن
Transmedical for Life مختبر ترانسيميديكال فور ليف	المن
Haroun Hospital مستشفى هارون	الزلفا
Bellevue Medical Center (BMC) مستشفى بلغو	المنصورة
Hôpital Albert Haykal مستشفى هيكال	الكورة
Centre Hospitalier du Nord (CHN) مركز الشمال الإستشفائي	زغرتا
Mazloum Hospital مستشفى المظلوم	طرابلس
Al Mounla Hospital مستشفى المنلا	طرابلس
Nini Hospital مستشفى النيني	طرابلس
مختبر ميكروبيولوجيا الصحة والبيئة LMSE - المعهد العالي للدكتوراه، الجامعة اللبنانية	طرابلس
CHU - Notre-Dame des Secours مستشفى سيدة المعونات الجامعي	جبل
Lab Akiki & Boulos مختبر عقيقي وبولس	جبل
Centre Médical Wakim مختبر واكيم	جولية
Ain Wazein Hospital مستشفى عين وزين	الشوف
Hammoud Hospital UMC مستشفى حمود الجامعي	صيدا
Al Karim Medical Laboratory (KML) مختبر الكريم	صيدا
Sheikh Ragheb Harb Hospital مستشفى الشيخ راجب حرب	البيشة
Sabbah Diagnostic Center (SDC) مختبر السباح	البيشة
Jabal Amel Hospital مستشفى جبل عامل	صور
Mashrek Diagnostic Center (MDC) مختبر المشرق	صور
Dar Al Amal University Hospital مستشفى دار الأمل الجامعي	بعلبك
Khoury General Hospital مستشفى خوري	زحلة
Medical Care Center (MCC) مختبر ميديكال كير سنتر	زحلة