



Lebanon National Operations Room Daily Report on COVID-19

Saturday, October 31, 2020

Report #227

Time Published: 10:30 PM

New in the report:

- The names of the laboratories that did not specify the district, place of residence, or phone number for a number of positive cases, which affects the tracking of cases and the identification of contacts to conduct the necessary checks within the past 24 hours.

1,699 New Cases		81,228 Total Cases since 21.2.2020		637 Total Deaths		41,624 Total Recovered	
1,692 Residents	7 Expats	78,875 Residents	2,353 Expats	15 New Deaths		1,229 New Recovered	

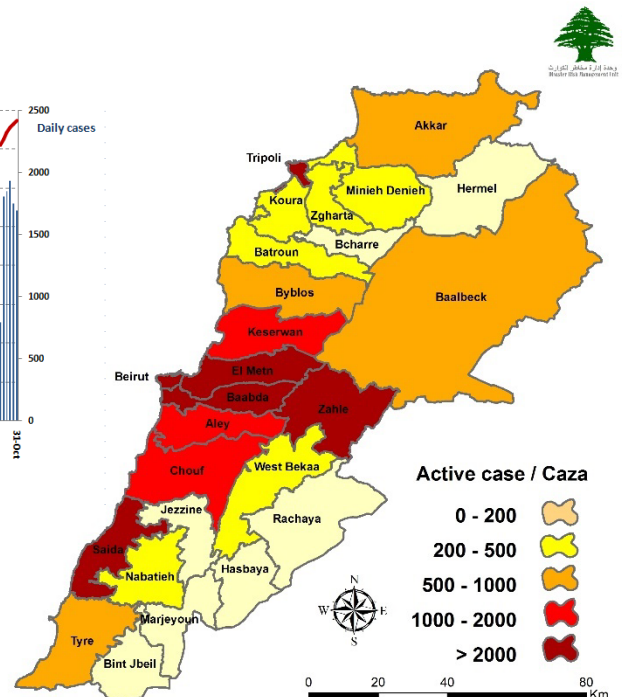
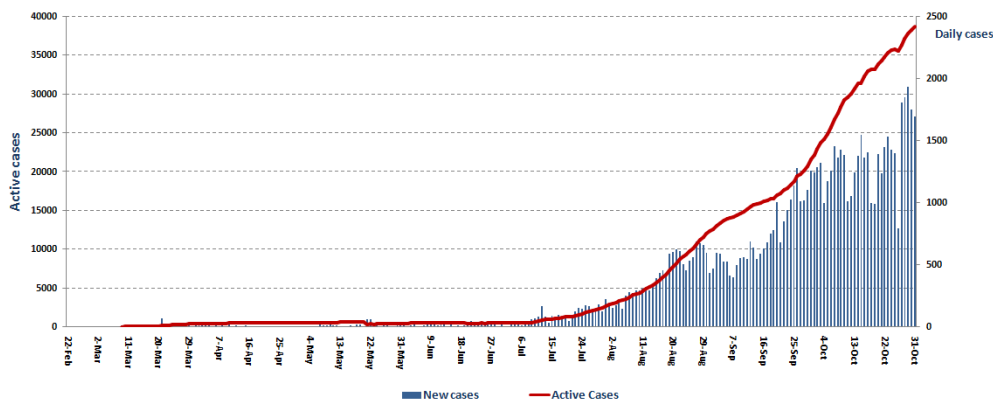
137 Deleted Status due to its recurrence	1,423 Total Cases in the Health Sector	38,967 Total Active Cases	812 Hospitalized Cases	276 Total Cases in ICU
	17 New Cases in the Health Sector	38,155 Cases in Home Isolation	536 Mild Cases	6 New Cases in ICU

1,174,401 COVID-19 Tests since 21.2.2020	862 COVID-19 Tests at Airport within 24 hrs.	14,041 COVID-19 tests for residents within 24 hrs.	Lebanon Status compared to the World		
			Total Cumulative	81,228	45,200,632
			Total Deaths	637	1,197,722
			Deaths percentage	0,78%	2,59%
			Total recoveries	41,624	33,396,494

Ref: Ministry of Public Health Data

Number of Cases by Location

- 14,376 case is Under investigation



Beirut	149
Ras Beirut	2
Qoreitem	2
Rouche	2
Hamra	9
Mseitbeh	3
Mar Elias	9
Tallet Al Khayyat	5
Dar Al Fatwa	1
Sanayeh	2
Zarif	2
Mazraa	5
Borj Abi Haidar	7
Rtariq Jdeedeh	8
Ras AL Nabaa	10
Bashoura	2
Basta Tahta	4
Jemmayze	1
Mar Michael	2
Ashrafieh	26
Adlieh	1
Others	46
Baabda	247
Chiah	9
Jnah	23
Ouzai	3
Bir Hassan	1
Cite Sportif	1
Ghobeiry	13
Ein Al Rimmaneh	14
Forn Al Shebbak	7
Haret Hreik	32
Lailaky	5
Bor AL Brajneh	31
Mreijeh	10
Raml Al Aly	1
Tahweetet Ghadir	5
Baabda	3
Hazmieh	12
Hadat	39
Loueizy	1
Kfarshima	1
Bsaba	1
Ras Al Metn	2
Chouit	1
Salima	1
Rweisat Salima	1
Chbanieh	1
Others	29
Western Beqaa	5
Maashghara	3
Aana	1
Others	1
Hermel	4
Hermel	2
Kouwakh	1
Others	1

Chouf	79
Damour	1
Haret El Naameh	2
Chhim	26
Marj Ali	1
Ketermaya	5
Anout	2
Borjen	2
Barja	16
Baasir	2
Dibbieh	1
Baq'oun Bakh'oun	1
Jiyyeh	2
Wady Al Zayneh	3
Zaarourieh	1
Bsaba	2
Deir Al Qamar	1
Deir Kousha	1
Ghrifeh	1
Jahlieh	2
Baqaata	2
Niha	1
Ammatour	1
Others	3
Aley	84
Al Amrousieh	4
Hay El Sillom	14
Ghadir Choueifat	1
Qebbeh	1
Khalde	1
Al Oumara	17
Aramoun	13
Bshamoun	14
Bleibel	1
Aley	2
Kahale	2
Qmatieh	1
Ein Al Jdideh	2
Baisour	1
Kfarmatta	1
Soufar	1
Btater	1
Wein Dara	1
Others	6
Batroun	11
Batroun	3
Thoum	1
Selaata	1
Daraya	2
Jrabta	1
Abrine	1
Baqsmaya	1
Ras Al Shaq'aa	1
Jezzine	4
Jezzine	2
Lebaa	1
Wady Banqoudein	1

Kesrwen	81
Sarba	14
Kaslik	2
Zouk Michael	7
Ghadir	9
Zouk Mosbeh	1
Adonis	2
Haret Sakher	2
Sahel Alma	7
Tabarja	3
Adma & Dafneh	3
Safra	4
Oqeibeh	1
Ballouneh	2
Sehaileh	1
Ein AL Rihaneh	1
Jeita	3
Ghazir	2
Kfar Hbab	2
Dar'oun	1
Hayyata	1
M'aissra	1
Ghbaleh	1
Ashkout	2
Feitroun	2
Raashine	1
Kfardibian	1
Hrajel	2
Others	3
Byblos	23
Byblos	4
Mastita	3
Blat	1
Amshit	5
Kfar Sala	1
Halat	1
Fidar	1
Nahr Ibrahim	2
Hsoun	1
Ghalboun	1
Hboub	1
Others	2
Tripoli	82
Zeitoun	10
Al Tal	2
Qebbeh	14
Zahrieh	4
Tabbaneh	1
Mina 1	4
Bsatine Al Mina	3
Qalamoun	2
Beddawy	10
Madina Al Jdideh	5
Others	27
Rashayya	3
Rashayya Fawka	1
Kherbet Rouha	2

Matn	174
Borj Hammoud	11
Nabaa	2
Sin El Fil	4
Jesr Al Basha	2
Jdeidet El Metn	3
Ras Al Jdideh	1
Bouchrieh	7
Dora	8
Rawda	6
Sed El Bouchrieh	4
Sabtieh	5
Dekwene	23
Mkalles	1
Antelias	7
Jal El Dib	1
Naqqash	5
Abdine	1
Zalqa	7
Byaqout	6
Bellview	1
Dbayyeh	9
Mansourieh	1
Fanar	7
Ein Saadeh	6
Roumieh	5
Bqannaya	1
Majzoub	1
Bsalim	8
Mteileb	2
Rabieh	3
Qornet Chehwan	1
Rabwe	2
Beit Al Char	3
Deek AL Mahdy	4
Mazraet Yashouh	3
Bekfayya	1
Saqiet Al Misk	1
Qornet El Hamra	2
Rweiseh	1
Baabdat	1
Beit Mery	2
Dahr AL Souwan	1
Btegrine	1
Others	3
Zghorta	14
Zghorta	3
Kfar Dlakos	1
Rash'een	4
Haret Al Jdeedeh	1
khaldieh	1
Ehden	1
Ayto	1
Others	2
Hasbayya	4
Hasbayya	2
Habbarieh	2

Akkar	43
Halba	5
Sheikh Mohammad	2
Kroum Arab	1
Sheikh Taba	1
Menyara	1
Mashha	1
Haizouq	1
Arqa	1
Sweiset Akkar	1
Mazraet Baldeh	1
Takrit	2
Baino	1
Shaqdouf	1
Ayyat	1
Bezbina	1
Old Akkar	3
Western Tal Abbas	1
Kousha	1
Beit Al Haj	1
Bebnine	2
Mhammara	1
Nahr Al Bared	5
Abdeh	3
Berqayel	1
Safinet Al Qaytaa	1
Qaryat	1
Jdeidet Al Qaytaa	2
Meshmesh	3
Majdala	1
Rahbeh	1
Beere	1
Dbabiet Al Sharkieh	1
Qbayyat	1
Others	9
Menyeh Dunnayah	27
Deir Amar	4
Menyeh	5
Bhannine	1
Seer Al Dunnayah	2
Beit Al Faqs	1
Btormaz	1
Kfar Habo	1
Bakh'oun	10
Others	2
Marjeyoun	8
Marjeyoun	1
Ebl El Saqy	1
Adeisseh	2
Mais Al Jabal	1
Majdel Silim	2
Touline	1

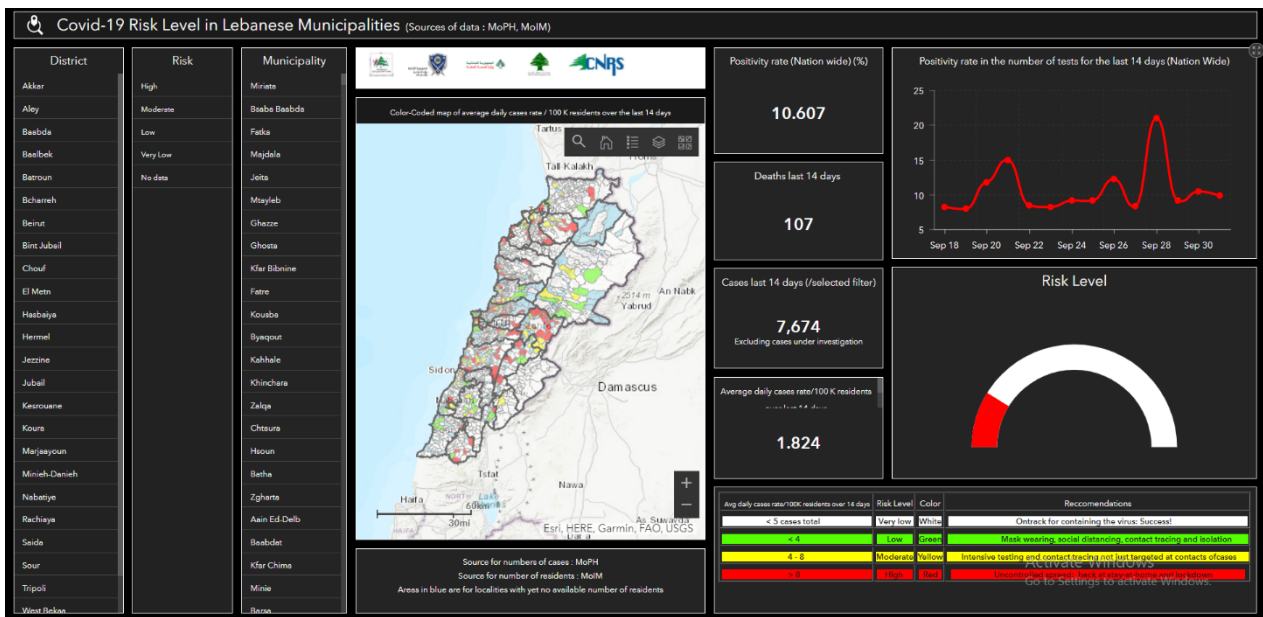
Zahleh	48
Meidan	2
Mallaqa	2
Mar Antonios	1
Hoch Al Oumara	1
Tal Shiha	1
Ablah	3
Ksara	4
Chtoura	2
Taalabaya	1
Jdita	1
Taanayel	1
Saadnayel	1
Qab Elias	2
Mreijat	2
Bar Elias	1
Anjar - Hoch Mous	1
Majdel Anjar	4
Masnaa	1
Riyak	2
Ali Al Nahry	1
R'eet	1
Terbol	2
Kfar Zabad	1
Others	10
Nabatieh	17
Nabatieh Al Fawka	1
Mazraet Kfar Joz	1
Kfar Rimman	1
Jbaa	1
Arab Salim	1
Deir AL Zahrany	2
Harouf	2
Dweir	1
Adshit Al Shqeef	1
Ansar	1
Eastern Zoutar	1
Arnoun	1
Qaaqa'iet El Jesr	1
Others	2
Koura	24
Amyoun	1
Kfar Aqqa	1
Kfar Hazir	1
Kosba	1
Reshdebbine	2
Bednayel	1
Kfar Qahel	1
Kefraya	1
Deddeh	1
Anfeh	6
Ras Masqa	1
Dahr El Ein	5
Others	2

Baalbek	136
Baalbek	16
Nahle	1
Maqneh	5
Al Ein	2
Arsal	16
Zboud	1
Qaa Baalbak	1
Deir Al Ahmar	1
Bednayel	11
Qasr Nabba	3
Temnine Fawka	14
Beit Chama	9
Hoch Al Rafqa	5
Temnine Tahta	6
Kfar Dabash	13
Hoch Al Naby	4
Taraya	10
Talya	1
Hezzine	8
Hor Taala	2
Brital	1
Bouday	1
Others	5
Saida	78
Old Saida	19
Al Sabil	1
Hlalieh	3
Haret Saida	1
Miyye w Miyye	1
Ein El Helwe	6
Majdlyoun	3
Abra	9
Bqosta	1
Ein El Delb	2
Ghazieh	7
Zahrany	1
Maghdoushe	1
Zrariah	1
Khartoum	1
Sarafand	3
Tefahta	1
Arab Tabbaya	1
Anqoun	2
Kfar Hatta	1
Others	13

Tyre	43
Tyre	20
Bass	1
Rashidieh	2
Maashouq	2
Borj AL Shemaly	10
Batoulieh	1
Deb'aal	1
Aiteet	1
Maarakeh	2
Maaroub	1
Bazourieh	5
Hennaway	1
Teir Zebna	3
Arzoun	1
Tora	1
Deir Qanoun	1
Shhour	1
Teir Falasay	4
Shabriha	1
Sh'eitieh	1
Malkiet Al Sahel	1
Borj Rahhal	1
Qleileh	2
Marwahine	1
Naqoura	3
Others	1
Bint Jbeil	21
Bint Jbeil	1
Ainata	5
Rmeish	5
Jmeijmeh	1
Deir Ntar	1
Qalaway	2
Borj Qalaway	1
Beit Leef	4
Others	1

Others	247
---------------	------------

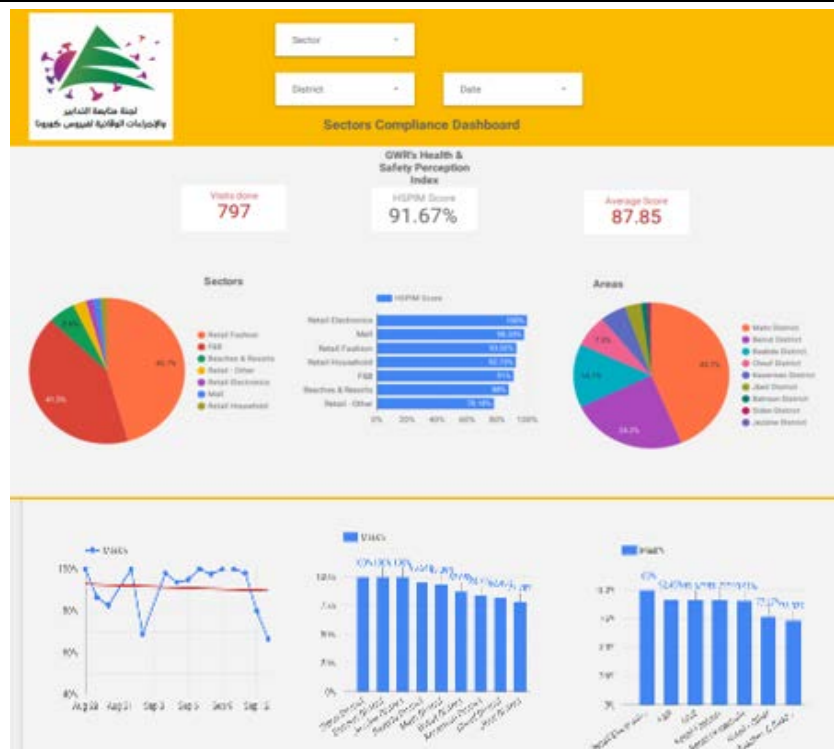
The Online platform to measure the level of risk of the spread of the new Corona virus



This interactive platform allows you to know the level of risk of spreading the kurna virus according to districts, based on the number of cases registered daily and the number of residents in each district. For more information on a daily basis, you can access the following link:

<https://bit.ly/DRM-RiskLevelInMunicipalities>

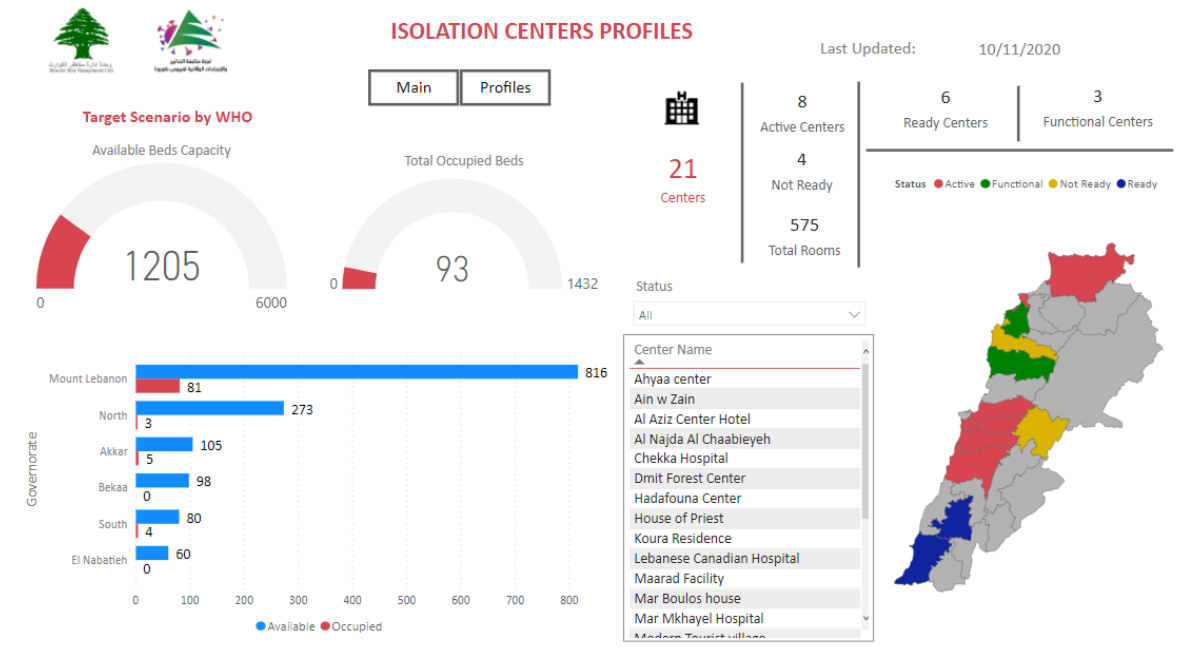
Online platform to track sector commitment in general mobilization procedures



Based on the recommendation issued by the National Committee for Follow-up of Preventive Measures and Measures to Confront the Coronavirus to open all sectors, provided that the general mobilization procedure (safe distance, muzzle, and hand sterilization) be applied, a special electronic platform was created that allows monitoring and measuring the percentage of commitment by various sectors on an ongoing basis.

The detailed results can be viewed directly at the following link <http://bit.ly/covidsectordata>

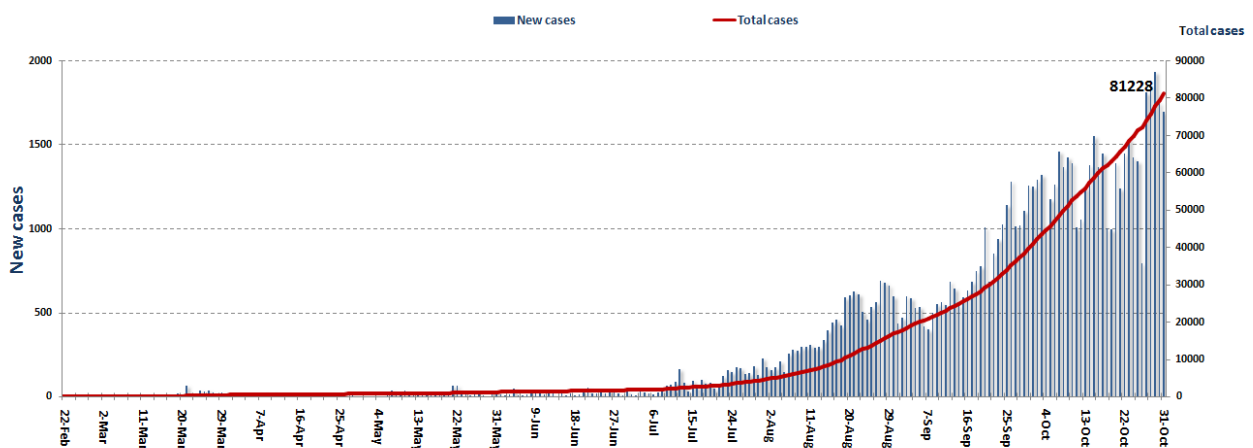
Occupancy rate of isolation centers for cases infected with Coronavirus



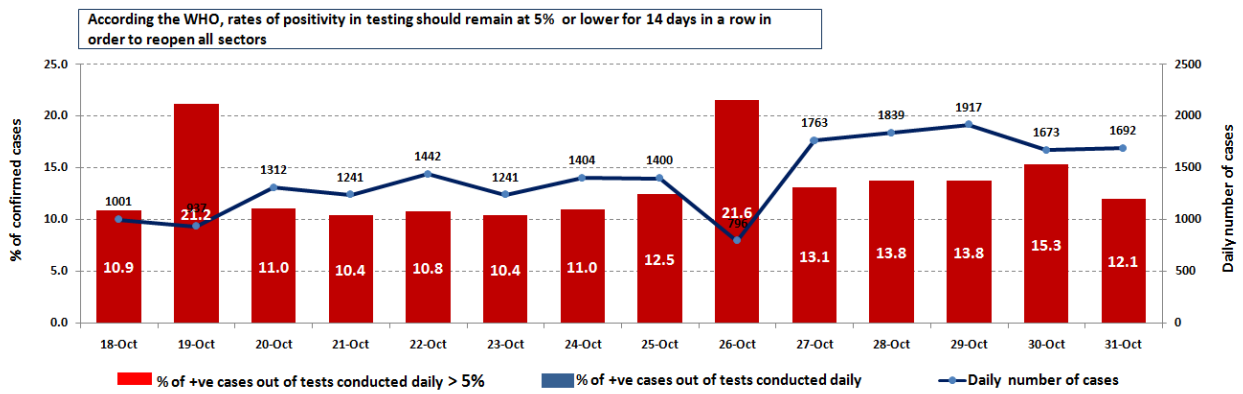
For more information about the isolation centers' distribution and the percentage of their occupancy, enter the following link: <http://bit.ly/DRM-IsolationCentersProfiles>

Note: These centers have been equipped in cooperation between the National Committee for Follow-up of Preventive Measures and Measures to Confront the Coronavirus and Governors and Municipalities, the United Nations Development Program, the World Health Organization, UNICEF, the Ministry of Public Health, the Syndicate of Nurses in Lebanon and the Syndicate of Specialists in Social Work.

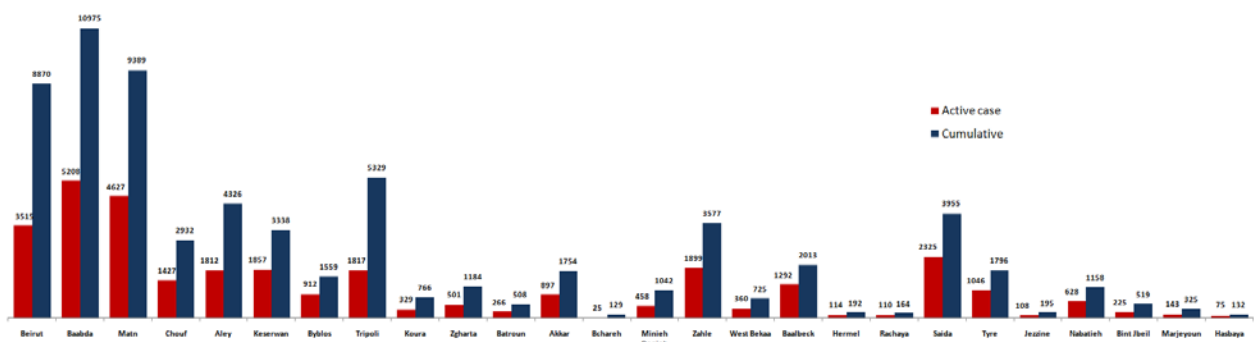
Cases per day



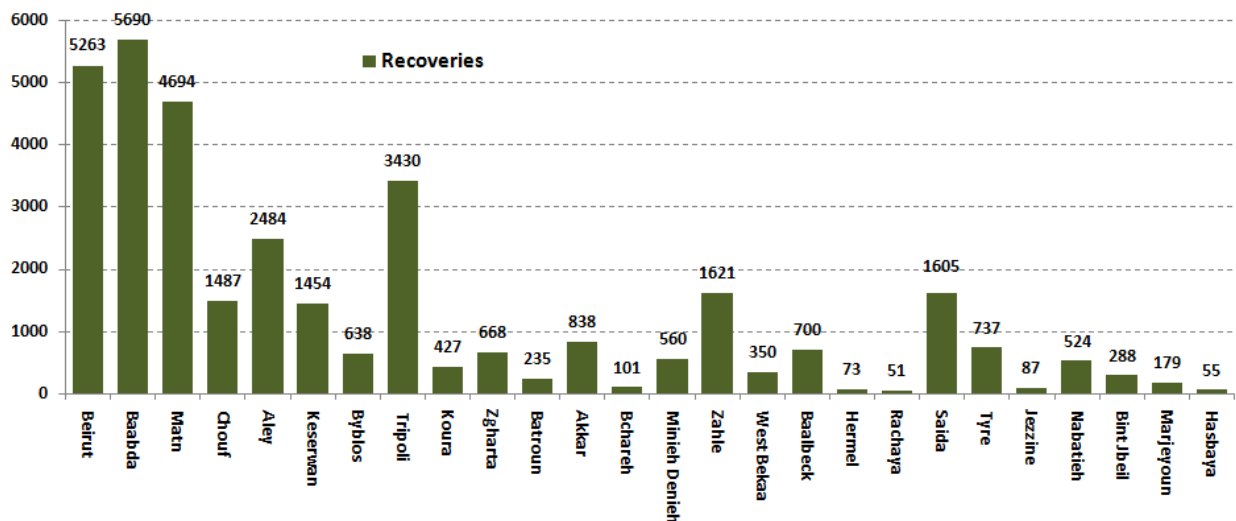
The percentage of positive cases out of the number of daily checks (18-31 Oct 2020)



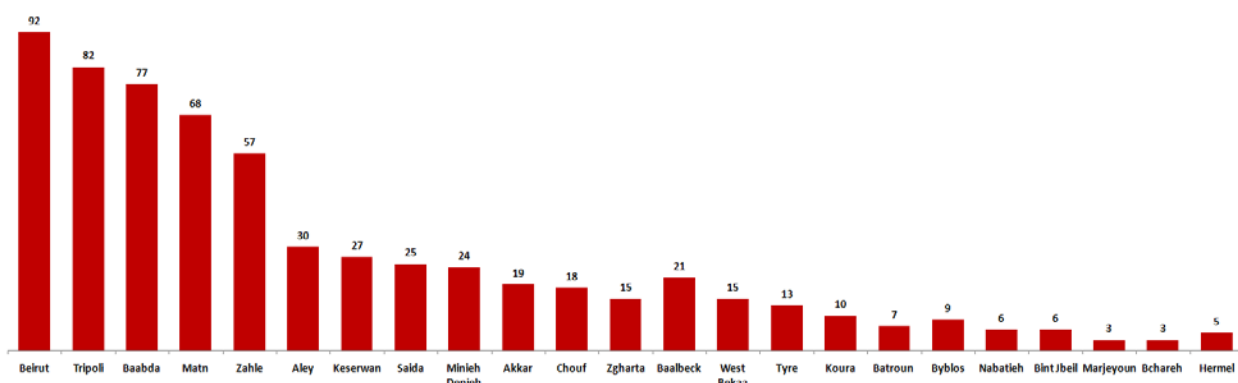
Distribution of Active Cases by Districts



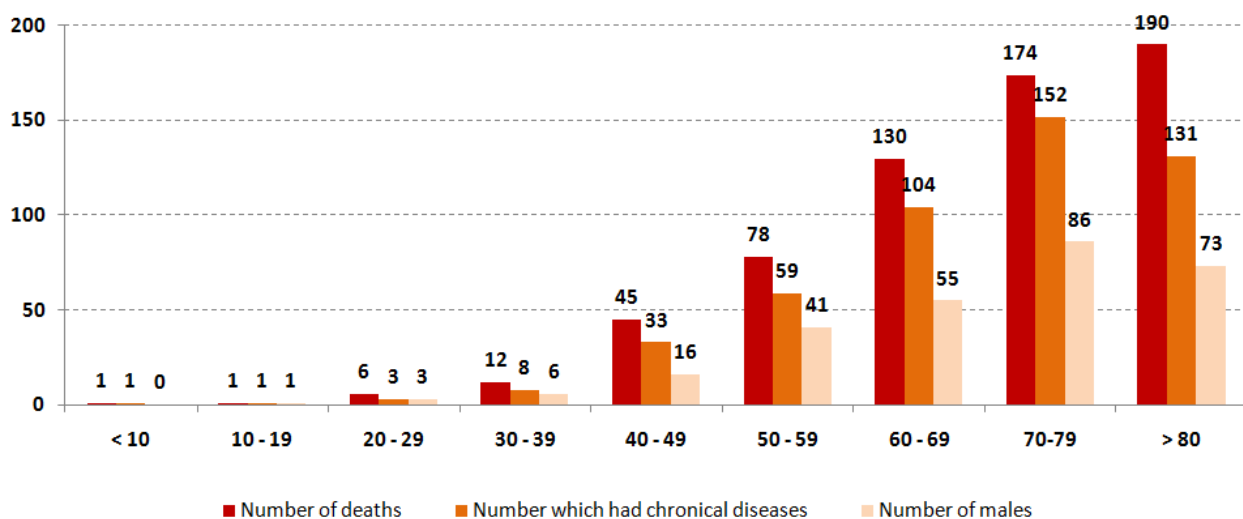
Recoveries



Distribution of deaths by Governorates



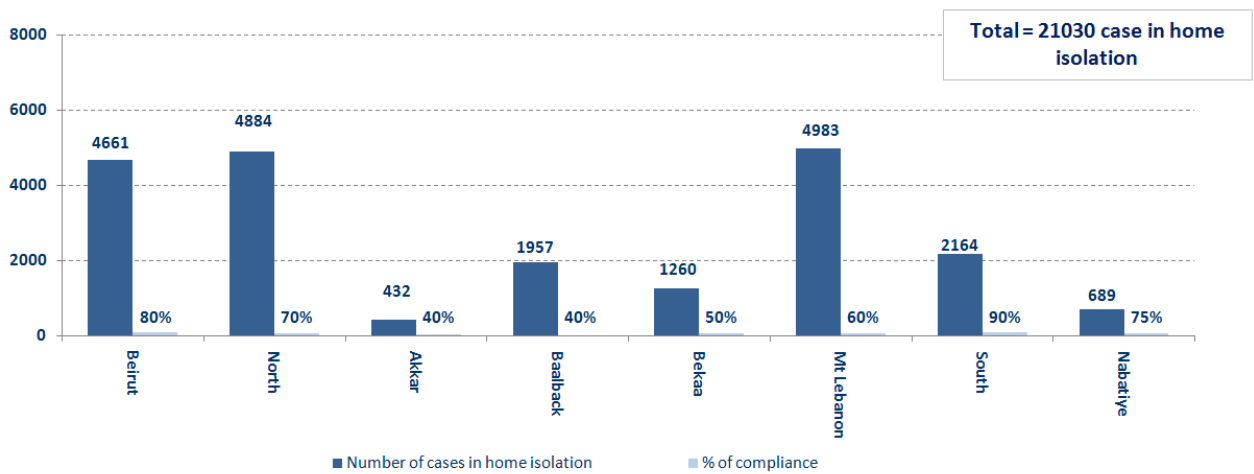
Distribution of deaths by Age



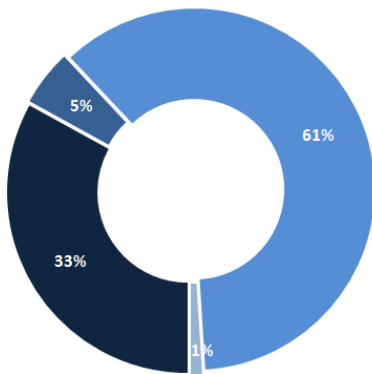
The distribution of the recorded deaths during the past 24 hours

Hospital	Residence	Gender	Age	Chronic
Baalbeck Gov Hospital	Baalbeck	Male	35	-
Baabda Gov Hospital	Beirut	Female	80	Yes
Baabda Gov Hospital	Matn	Male	81	Yes
Rizk Hospital	Matn	Male	86	Yes
Nabateih Gov Hospital	Tyre	Male	75	Yes
Bahman Hospital	Baabda	Female	84	Yes
Riyyak Hospital	Zahleh	Male	67	Yes
Saint George Hospital	Baabda	Male	65	Yes
Saint George Hospital	Matn	Female	50	Yes
Saint George Hospital	Baabda	Female	57	No
Tripoli Gov Hospital	Tripoli	Female	30	Yes
Berri Gov Hospital	Saida	Female	56	No

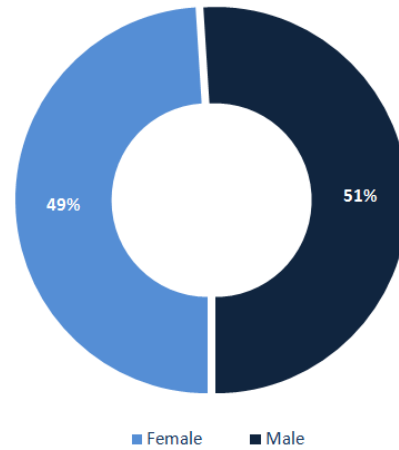
Number of individuals in home isolation and percentage of commitment to isolation



Exposure



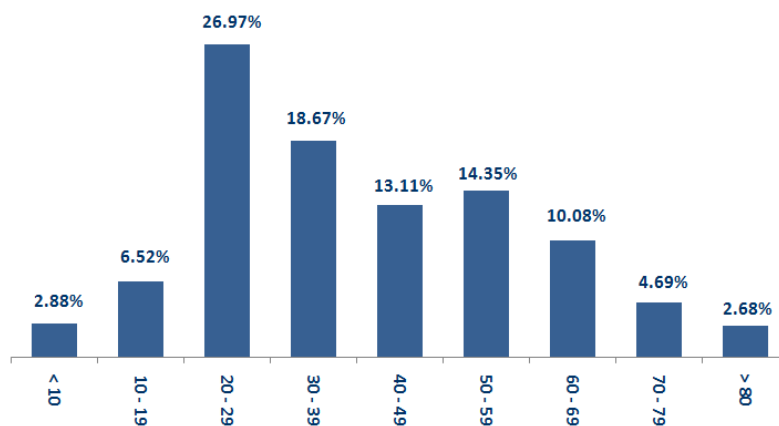
Distribution according to gender



■ Contact with confirmed case ■ Travel related ■ Under investigation ■ Unidentified source

■ Female ■ Male

Distribution by age



Decisions and actions taken – 10/31/2020

Ministry of Public Health

- The Ministry of Health continued to prepare an intensive care unit for Corona patients at Al Minya Hospital, to be opened next week

Arriving from	Company	Flight Number	Number of Positive Cases
N/A			
Total			0

Lebanese Red Cross

237,429 (1,931 New)	Number of PCR tests transferred to laboratories	53,398 (209 New)	Number of additional ambulance centers ready to respond	48	ambulance centers	7,314 (70 New)	cases transferred to hospitals
166	Number of volunteers trained to transfer PCR tests	1,498	Number of trained paramedics	8,824 (20 new)	total number of respondents	95,237 (479 New)	number of those benefiting from awareness *sessions
967	The number of university volunteers trained to follow up on prevention measures in companies and institutions	291	Number of university volunteers trained to conduct awareness sessions	550	total LRC volunteers for covid19	8,721 (20 New)	number of trained managers for isolation centers
4,541 (32 New)	Number of beneficiaries from educational electronic platforms COVID-19	261,624	Number of distributed equipment	1,252,049	total distributed posters, brochures, and flyers on covid19 prevention	734	number of prisons that have been disinfected

General Directorate of Internal Security Forces

The number of seizure records during the past 24 hours					The total number of records since 03/08/2020		
Written records of violating institutions (absorptive capacity and preventive measures)					1		
Written records of persons violating the decision to wear a mask					0	Beirut	21,705
Written records of people violating the general mobilization decision (Aragil* and social distancing)					206	Mount Leb	21,742
Total					207	Beqaa	9,129
						North	7,614
Beirut	Mount Leb	Beqaa	North	South		South	8,208
2	141	31	6	27		Total	68,398

General Directorate of State Security

Reporting the closure of Baalbek-Hermel governorate to all establishments in Baalbek from 10/31/2020 until 08/11/2020, with restaurants committing 50% of their capacity as well as the possibility of complete closure in the event of an increase in the number of Coronavirus

- Notification of the percentage of compliance with the general mobilization decision in the governorates, which came as follows within the past 24 hours:

Beirut	South	North	Akkar	Beqaa	Nabateih	Baalbek Hermel	Mount Leb
28%	52%	50%	40%	90%	90%	10%	45%

General Directorate of General Security

-The report of the death of a person in Baalbek Governmental Hospital due to the Corona virus.

- Reporting the commitment of the municipalities to the decision of the Minister of Interior and Municipalities:

Municipalities that abided by the decision	Municipalities didn't abide by the decision
Hasbaya, Al-Fardis, Ain Kafr Zabad, Qaa Al-Reem, Jdita, Rahba, Niha, Jahiliya, Amatour, Homal, Ain Anoub	Al Manara, Aandqeit

- Follow up the implementation of the required security and preventive measures at the airport, ports and border crossings.
- Reporting cases registered in the various districts and cases in home quarantine.

Ministry of Public Works and Transportation

Departing Flights		Arriving Flights	
Number of Flights	40	Number of Flights	41
Number of Departing Individuals	4,322	Number of Arrivals	3,550

Port	Entered			Left		
	Import	Direction	#	Export	Direction	#
Beirut	Oil	Port Said	1			
	Containers	MarcusLock	1			
Zahrani				Blank	Malta	1
Total			2			1

General announcements

The following recommendations were issued from the meeting of the Committee for Follow-up of Preventive Measures and Procedures for Coronavirus on 10/30/2020:

• Asking private hospital owners to allocate 10% of normal beds and 20% of intensive care beds for Corona patients, within a period not exceeding one week, and in case of violation, the following measures should be applied:

- Directing books to the guarantors for not giving hospital approval.
- Reducing the classification of private hospitals.

• Requesting the Ministry of Justice to give legal advice on the possibility of placing a hand on a private hospital or closing it within the conditions of general mobilization.

• Requesting the Ministry of Interior and Municipalities to prevent curfews between nine o'clock in the evening and five in the morning in all Lebanese territories.

• Requesting the Ministry of Interior and Municipalities and the Ministry of Tourism to prohibit private and public parties and social events of all kinds in restaurants and halls

• Urging all citizens not to gather in private places and not hold family gatherings for more than 6 people. Activating the HEAT MAP closure plan in the regions to include Beirut and its suburbs in accordance with the standards of closing streets, neighborhoods, and compounds

Note: The decisions can be found at www.drm.pcm.gov.lb

Examples of lack of adherence to safety measures

Failure of some municipalities to abide by the Ministry of Interior and Municipalities Decision No. 1025/2020 related to the closure of towns that have a high risk of the spread of the epidemic.

- Demand gatherings and demonstrations.
- Failure to comply with the preventive measures and procedures required in several stores and markets (putting on a muzzle or face mask, sterilizing hands, maintaining a safe distance).
- Non-compliance with the 50% occupancy rate in several restaurants and amusement game centers.
- Gatherings for social events.
- Failure of those in contact with confirmed cases to adhere to home isolation procedures until the results of the laboratory tests are issued.

If you feel any symptoms, call directly the hotline of the Ministry of Public Health: 1214 or 01/594459

Laboratories that did not comply with the procedures approved by the MoPH About the information required to be recorded for infected cases within the past 24 hours

Laboratories that did not specify the Governorate	
Laboratory/Hospitals	Cases
Hadi Laboratory/ Haret Hreik	180
Hospital LAU Medical Center / Rizk	6
Beirut International Airport	3
Hospital American university	3
Hospital Bahman	1
Hospital Sacre Coeur	1

Number of positive cases without specifying the place of residence	
Laboratory/Hospitals	Cases
Hadi Laboratory/ Haret Hreik	183
Hospital American university	12
Hospital Mont liban	8
Mashrek Medical Diagnostic Center MDC	8
Hospital Sacre Coeur	7
Hospital Rassoul Aazam	6
Hospital LAU Medical Center / Rizk	6
Beirut International Airport	3
Hospital Bahman	2
Military Hospital / Adlieh	2
Laboratoire Akiki et Boulos	1
Hospital Ragheb Harb	1
Hospital Hammoud / Saida	1
Hospital Centre Hospitalier du Nord	1

Number of positive cases without a phone number	
Laboratory/Hospitals	Cases
Hadi Laboratory/ Haret Hreik	21
Hospital LAU Medical Center / Rizk	2

A list of the laboratories accredited by the MoPH to conduct PCR tests

المختبرات الحكومية المؤهلة إجراء التشخيص المخبري لفيروس كورونا بطريقة الـ RT-PCR

المختبر	الموقع
مستشفى رفيق الحريري الجامعي RHUH	بيروت
مستشفى حلبا الحكومي	حلبا
مستشفى طرابلس الحكومي	طرابلس
مستشفى البترون الحكومي	البترون
مستشفى فتوح كسروان الحكومي (البوار)	كسروان
مستشفى نبيه يزّي الحكومي الجامعي	البلدنة
مستشفى تينين الحكومي	تينين
مستشفى بنت جبيل الحكومي	بنت جبيل
مستشفى بعلبك الحكومي	بعلبك
مستشفى الرئيس الياض الهرابي الحكومي	زحلة

مختبرات المستشفيات العسكرية

Hôpital Militaire Central	المستشفى العسكري المركزي في بيروت	بيروت
---------------------------	-----------------------------------	-------

المختبرات المؤهلة لأخذ عينات "المسحات الأنفية" بطريقة Drive- thru

مختبر ميديكال دياغنوستيك تريتمانت سنتر (الحمراء)	بيروت
Medical Diagnostic Treatment Center (MDTC)	بيروت
مختبر ميد لاب MedLab SAL CIC ALS (الحمراء - الجبلينور)	بيروت
مختبرات عياني Itani Medical Laboratories (المرعة)	بيروت
مختبر أ ب سي ABC Laboratories	الأشرفية
مختبرات معوض الطبية Mouawad Medical Laboratory	التياح
مختبرات الشياح (د. فواد ربحان) Rihan Medical Center	التياح
مختبر إكسبرت لاب Expert Lab	لنصورية
مختبر لايف لاب Life LAB	بعلبك
مستشفى الرياق Riyak Hospital	رياق

المختبرات الخاصة المؤهلة لإجراء التشخيص المخبري لفيروس كورونا بطريقة الـ RT-PCR

المختبر	الموقع
AUBMC مستشفى الجامعة الأميركية	بيروت
Hotel-Dieu de France (HDF) مستشفى أوتيل ديو الجامعي	بيروت
مختبرات رودولف ميريو (الجامعة اليسوعية – المتحف) Laboratoire Rodolphe Mérieux (Université Saint-Joseph)	بيروت
Saint-George Hospital - UMC مستشفى القديس جارجيوس الجامعي	بيروت
Makassed General Hospital مستشفى المقاصد	بيروت
LAU Medical Center - Rizk Hospital مستشفى رزق الجامعي	بيروت
Hôpital Libanais Geitawi - CHU مستشفى اللبناني الجعيتاوي الجامعي	بيروت
Hôpital Notre-Dame du Rosaire مستشفى الوردية	بيروت
Doctor 's Center مختبر مركز الأطباء	بيروت
Fontana Laboratories (الحمرا) مختبر فونتانا	بيروت
مختبر الأمن العام (العنابية)	بيروت
Laboratoire Jabre-Ghorra مختبرات جبر وغرة	بيروت
Saint Marc Medical & Diagnostic Center مختبر السان مارك	بيروت
Laboratoire Moderne (Modern Lab- Berjaoui) المختبرات الحديثة	الغبيوي
Sahel General Hospital (SGH) مستشفى الساحل	الغبيوي
مستشفى الزهراء الجامعي	الغبيوي
Al Zahraa Hospital - UMC مستشفى الرسول الأعظم	برج الزواجة
مستشفى بهمن	
Al Rassoul Al Aazam Hospital Bahman Hospital	حارة حريك
مختبر ناتيونال دياغنوستك سرفيس كومباني National Diagnostic Services Company (NDSC)	حارة حريك
Medical Diagnostic Center مختبر الدكتور محمود عثمان - مركز التحاليل الطبية	لرابعة
American Diagnostic Center (ADC) مختبر أميريك دياغنوستك سنتر	الجناح
Mount Lebanon Hospital مستشفى جبل لبنان	بعنا
Hôpital Saint-George – Hadath مستشفى السان جورج الحدث	بعنا
Al Hadi Laboratory مختبر الهادي	بعنا
INOIE-Liban مختبر	بعنا

Hôpital du Sacré- Coeur مستشفى قلب يسوع	الحازمية
Clinigene مختبر كلينيجان	الحازمية
Hôpital Dr.Samir Serhal مستشفى سرحال	المتن
Transmedical for Life مختبر ترانس ميدكال فور ليف	المتن
Haroun Hospital مستشفى هارون	الزلفا
Bellevue Medical Center (BMC) مستشفى بلفو	المنصورة
Hôpital Albert Haykal مستشفى هيكال	الكورة
Centre Hospitalier du Nord (CHN) مركز الشمال الإيستفاني	زغرتا
Mazloum Hospital مستشفى المظلوم	طرابلس
Al Mounla Hospital مستشفى الملا	طرابلس
Nini Hospital مستشفى النيني	طرابلس
مختبر ميكروبيولوجيا الصحة والبيئة LMSE - المعهد العالي للدكتوراه، الجامعة اللبنانية	طرابلس
CHU - Notre-Dame des Secours مستشفى سيدة المعونات الجامعي	جبل
Lab Akiki & Boulos مختبر عقيقي وبولس	جبل
Centre Médical Wakim مختبر واكيم	جونية
Ain Wazein Hospital مستشفى عين وزين	الشوف
Hammoud Hospital UMC مستشفى حمود الجامعي	سيدا
Al Karim Medical Laboratory (KML) مختبر الكريم	سيدا
Sheikh Ragheb Harb Hospital مستشفى الشيخ راجب حرب	البيتمنة
Sabbah Diagnostic Center (SDC) مختبر الصباح	البيطية
Jabal Amel Hospital مستشفى جبل عامل	صور
Mashrek Diagnostic Center (MDC) مختبر المشرق	صور
Dar Al Amal University Hospital مستشفى دار الأمل الجامعي	بعلبك
Khoury General Hospital مستشفى خوري	زحلة
Medical Care Center (MCC) مختبر ميدكال كير سنتر	زحلة