





Lebanon National Operations Room Daily Report on COVID-19

Wednesday, September 30, 2020

Report #196

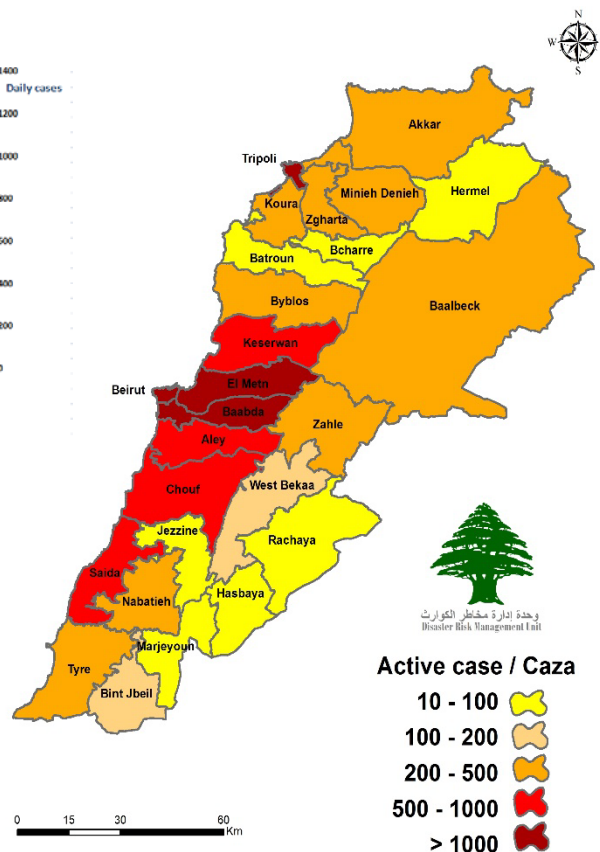
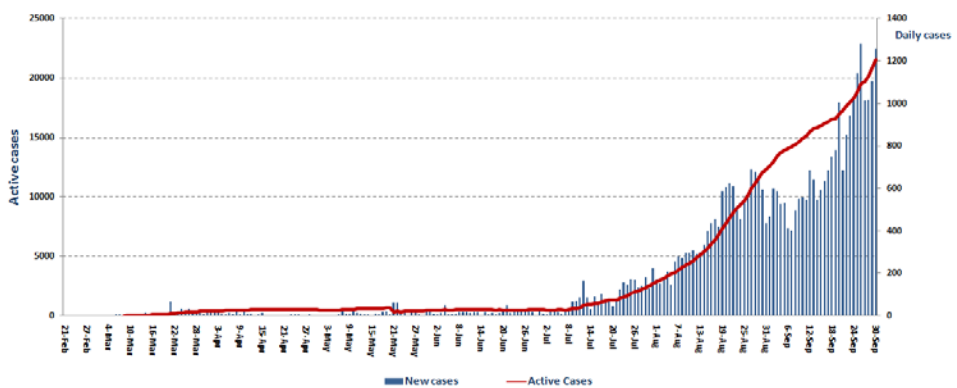
Time Published: 10:00 PM

1,257 New Cases		39,620 Total Cases since 21.2.2020		367 Total Deaths		17,565 Total Recovered	
1,245 Residents	12 Expats	37,942 Residents	1,678 Expats	6 New Deaths		455 New Recovered	
1,024 Total Cases in the Health Sector		21,688 Total Active Cases		533 Hospitalized Cases		167 Total Cases in ICU	
23 New Cases in the Health Sector		21,155 Cases in Home Isolation		366 Mild Cases		0 New Cases in ICU	
798,500 COVID-19 Tests since 21.2.2020		Lebanon Status compared to the World					
789 COVID-19 Tests at Airport within 24 hrs.		12,008 COVID-19 tests for residents within 24 hrs.		Total Cumulative		39,614	
				Total Deaths		367	
				Deaths percentage		0,92%	
				Total recoveries		17,565	
						33,978,614	
						1,014,886	
						2,98%	
						25,237,938	

Ref: Ministry of Public Health Data

Number of Cases by Location

- 7,507 case is Under investigation



Beirut	Cases
ein El Mreisseh	4
Ras Beirut	6
Manara	7
Qreitem	3
Raouche	9
Hamra	14
Ein El Teeneh	3
Mseitbeh	4
Mar Elias	1
Tallet El Khayyat	6
Tallet El Drouz	1
Sanayeh	2
Zarif	3
Mina El Hoson	1
Mazraa	18
Borj Abi Haidar	3
Basta El Fawka	6
Tariq Jdeedeh	22
Ras El Naabeh	11
Baschoura	2
Basta Tahta	1
Jesr	2
Ashrafieh	13
Corniche El Nahr	1
Others	26
Baabda	Cases
Chiah	10
Jnah	2
Ouzai	4
Bir Hassan	2
Ghobeiry	4
Ein El Rimmaneh	16
Forn El Shubbak	8
Haret Hreik	22
Lailaki	3
Borj El Barajneh	18
Mreijeh	10
Tahweetet El Ghadir	8
Baabda	14
Hazmieh	9
Hadat	46
Sabtieh	1
Botchay	1
Kfarshima	6
Wadi Shahrour Sofla	1
Wadi Shahrour Olya	4
Rweiset El Ballot	1
Chouit	1
Araya	2
Hammana	1
Chbanieh	1
Falougha	2
Btibat	1
Qernayel	1
Others	6

Matn	Cases
Borj Hammoud	8
Nabaa	2
Sin El Fil	10
Jdeidet El Metn	5
Bouchrieh	5
Dora	4
Rawda	3
Sabtieh	4
Dekwene	13
Antilias	3
Naqqash	2
Zalka	4
Dbayyeh	4
Mazraet Deir Aoukar	1
Mansouriyye	12
Fanar	12
Gharoush	1
Ein Saadeh	8
Roumieh	11
Bsalim	8
Mtayleb	2
Rabwe	1
Beit Chaar	2
Deek El Mahdi	6
Mazraet Yashouh	4
Zikrit	1
Bekfayya	1
Beit Shabab	1
Broummana	3
Beit Merry	1
Monteverde	4
Mtein	1
Bolonia	1
Aintoura	1
Bteghreen	1
Douwar	3
Others	7
Chouf	Cases
Saadiyyat	2
Naameh	8
Chhim	1
Ketermaya	1
Siblin	1
Borjen	1
Barja	5
Jiyeh	1
Jadra	1
Kfarfaqoud	1
Mgheireh	1
Baaqleen	1
Ghareefe	1
Botmeh	1
Ein W Zein	1
Mazraa	1
Kfarnabrakh	1
Mraste	1
Barouk	1

Aleyh	Cases
Amrousieh	1
Hay El Sillom	9
Qebbeh	4
Khaldeh	5
Al Oumara	11
Deir Qoubel	1
Aramoun	20
Mouwenseh	1
Baawarta	1
Bshamoun	5
Bleibel	1
Aley	4
Kahale	3
Kfarmatta	1
Chanayh	2
Meshqeety	1
Btater	1
Azzouniyyeh	1
Ein Dara	1
Others	4
Keserwan	Cases
Sarba	1
Zouk Michael	8
Ghadir	4
Zouk Mosbeh	5
Adonis	3
Sahel Alma	4
Adma & Dafneh	3
Safra	1
Bouar	1
Ballouneh	2
Ghazir	2
Jdeidet Ghadir	1
Harissa	2
Zaytoun	1
Qleiaat	2
Ashkout	2
Kfardebian	1
Hrajel	1
Faraya	2
Jbeil	Cases
Jbeil	1
Amshit	1
Halat	2
Fidar	1
Jeddayel	1
Monsef	1
Ghalboun	1
Hboub	1
Hsarat	2
Marjeyoun	Cases
Ebl El Saki	2
Borj El Mulouk	1
Majdel Silim	1
Jezzine	Cases
Kfarjarra	2

Tripoli	Cases
Bab El Ramel	1
Qebbeh	7
Zahrieh	4
Mina	12
Bsatin El Mina	4
Beddawi	5
Beddawi Camp	8
Others	32
Koura	Cases
Kfar Aqqa	1
Ein Ekreen	1
Deddeh	2
Anfeh	3
Bohsas	1
Dahr El Ein	1
Barsa	3
Nakhle	2
Others	1
Zghorta	Cases
Zghorta	9
Ardat	1
Kfar Dlakos	1
Rasheen	2
Kfarhata	2
Majdlayya	5
Alma	1
Ehden	1
Meryata	3
Others	3
Batroun	Cases
Batroun	1
Herry	1
Shekka	2
Besbina	1
Nahla	1
Hamat	1
Others	1
Akkar	Cases
Halba	1
Menyara	1
Bezbeena	1
Tal Abbs Gharbe	1
Nahr El Bared	3
Abdeh	2
Berqayel	1
Qebeet	1
Hrar	1
Jdeidet Qaytaa	1
Fneidek	1
Sharbeela	1
Qobayyat	5
Wady Khaled	1
Others	4
Bcharre	Cases
Bcharre	1
Bkaa Kafra	1

Zahleh	Cases
Maallaqa	2
Hoch El Oumara	1
Forzol	3
Hezzerta	1
Ablah	1
Niha	1
Ksara	1
Chtoura	5
Taalabaya	2
Saadnayel	13
Qab Elias	8
Bar Elias	15
Majdel Anjar	3
Masnaa	1
Riyak	1
Ali El Nahry	1
Terbol	1
Dalhamieh	1
Kfarzabad	1
Others	17

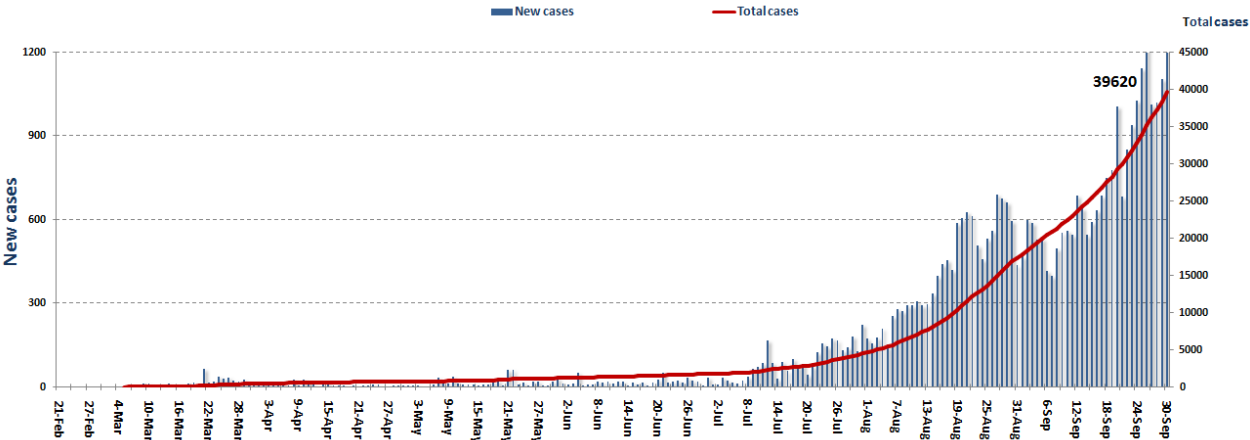
Others	7
Western Beqaa	Cases
Ein El Teeneh	1
Ammiq	1
Kamed El Loz	1
Ghazze	2
Marej	2
Others	3
Nabatieh	Cases
El Bayad	1
Nabatieh El Fawka	1
Choukeen	1
Kfar Tebnit	1
Deir El Zahrani	1
Toul	2
Harouf	1
Jebsheet	2
Others	1

Saida	Cases
Saida Kadeemeh	1
Blata	1
Hlalieh	6
Haret Saida	3
Ein El Helwe	9
Majdelyoun	6
Abra	6
Ein Delb	1
Others	43
Menye Dunniyyeh	Cases
Deir Aamar	1
Nabe Youshaa	1
Menyeh	26
Kfarhabo	1
Rawda	1
Bakhoun	1
Others	2

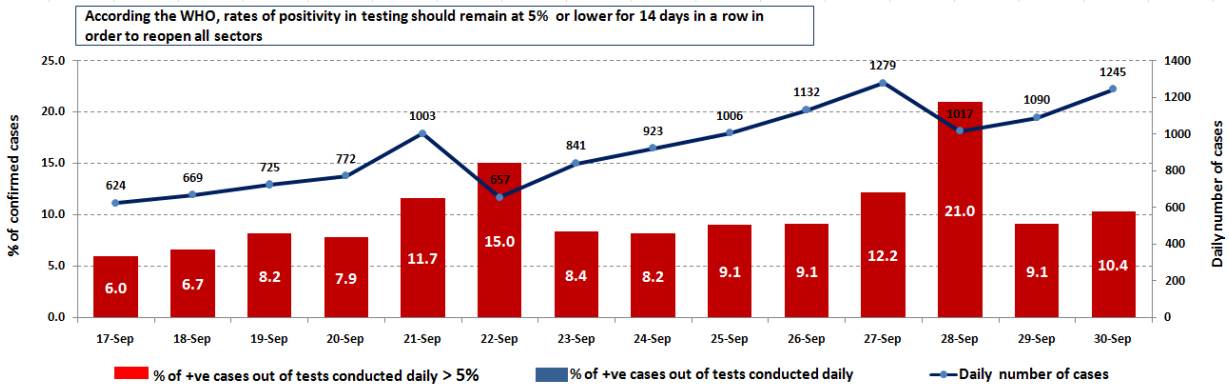
Bnt Jbeil	Cases
Tebnin	1
Ayta El Jabal	1
Harees	1
Kafra	1
Beit Leef	1
Others	1
Tyre	Cases
El Bass	2
Jal Bahr Chimali	2
Shhabiyeh	1
Hallousieh	1
Abbasieh	2
Mansoury	1
Others	5

Others	151
--------	-----

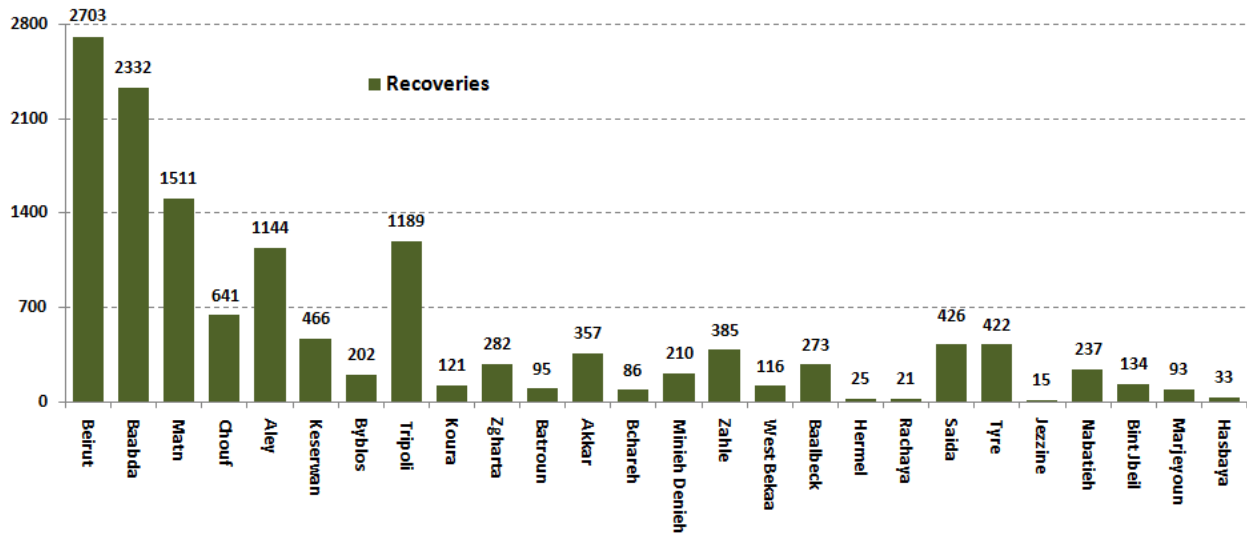
Cases per day



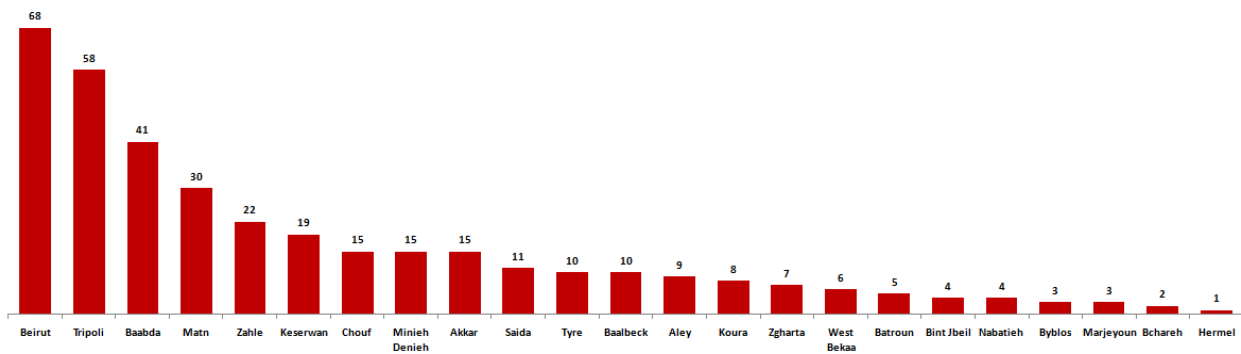
The percentage of positive cases out of the number of daily checks (16 September to 30 September 2020)



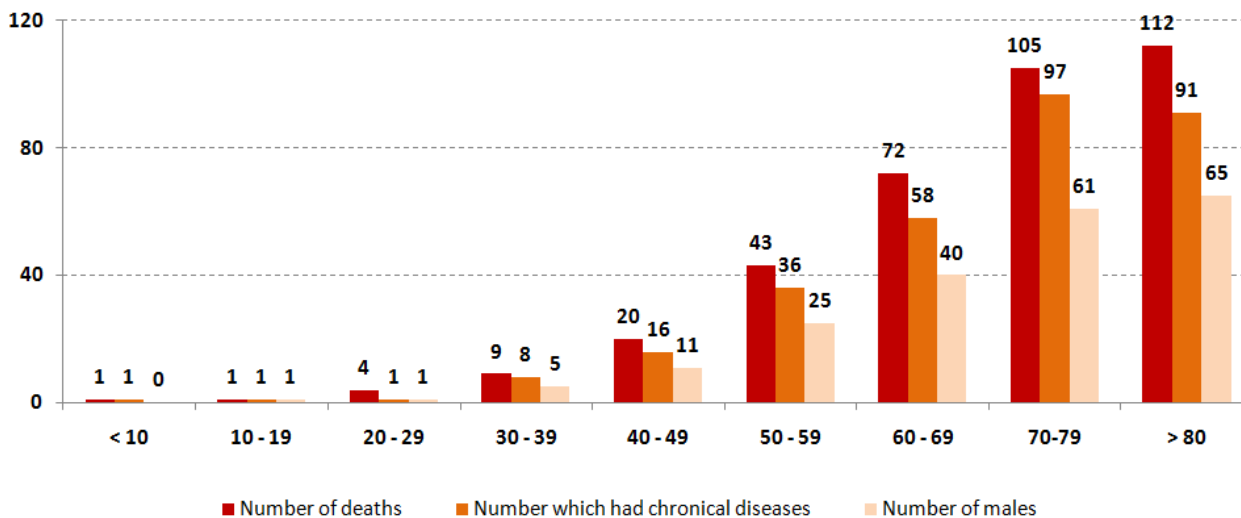
Recoveries



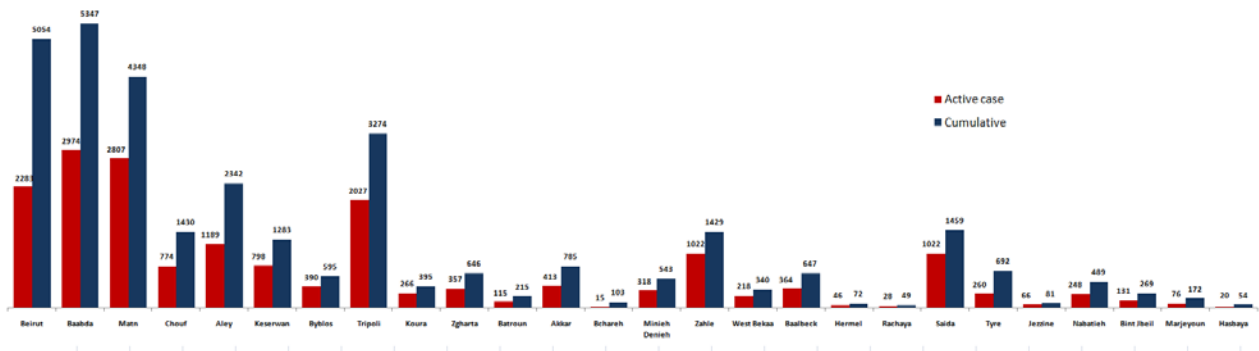
Distribution of deaths by Governorates



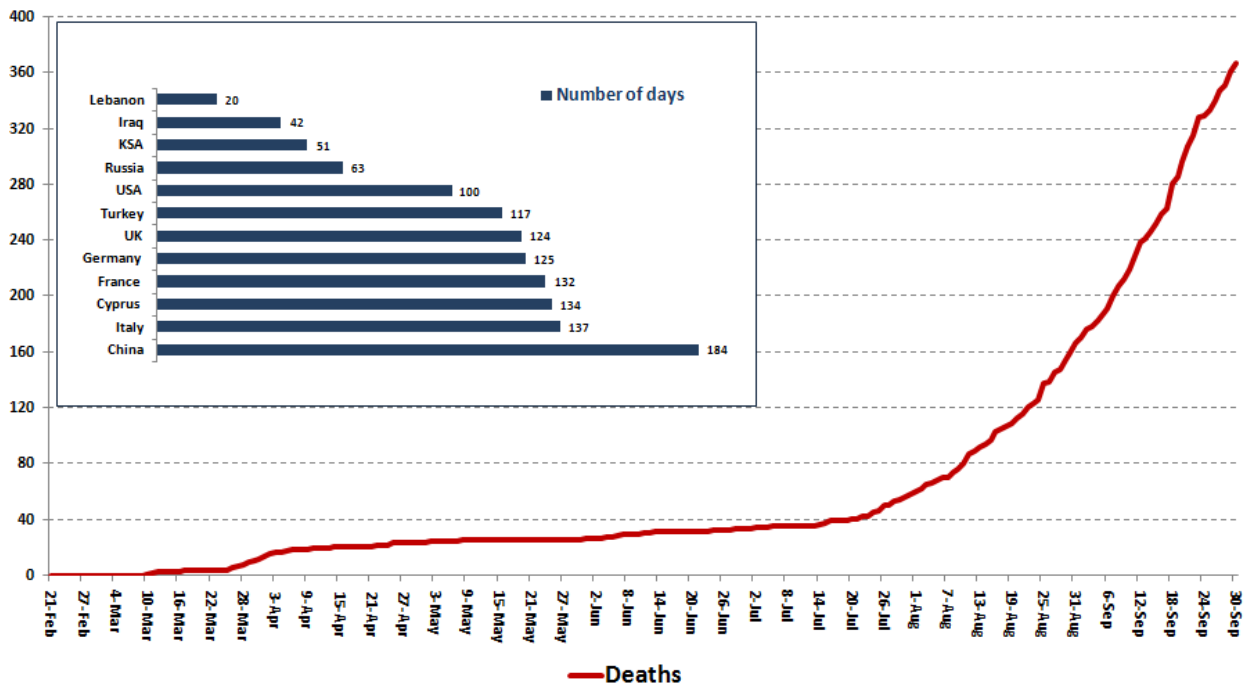
Distribution of deaths by Age



Distribution of Active Cases by Districts



Comparison of the rate of doubling of the number of deaths in Lebanon with other countries (death doubling rate)

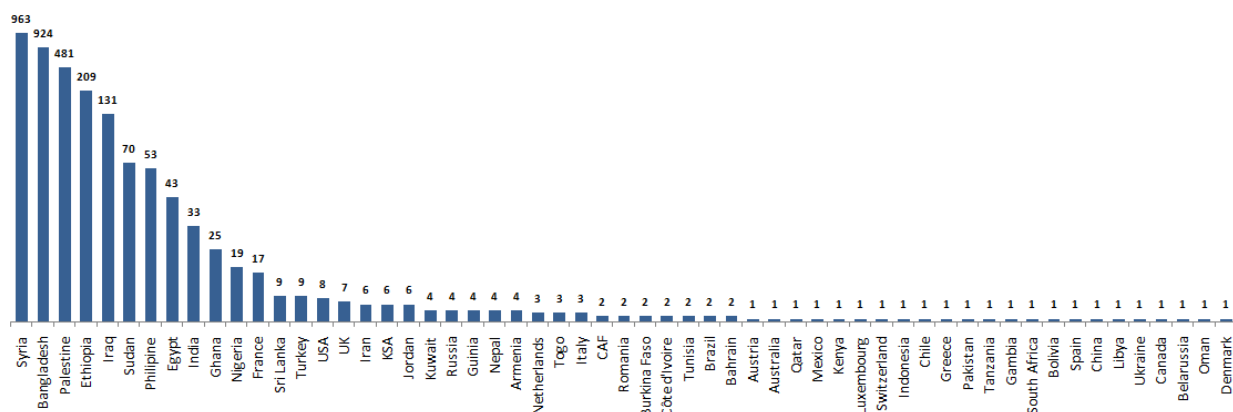


The distribution of the recorded deaths during the past 24 hours

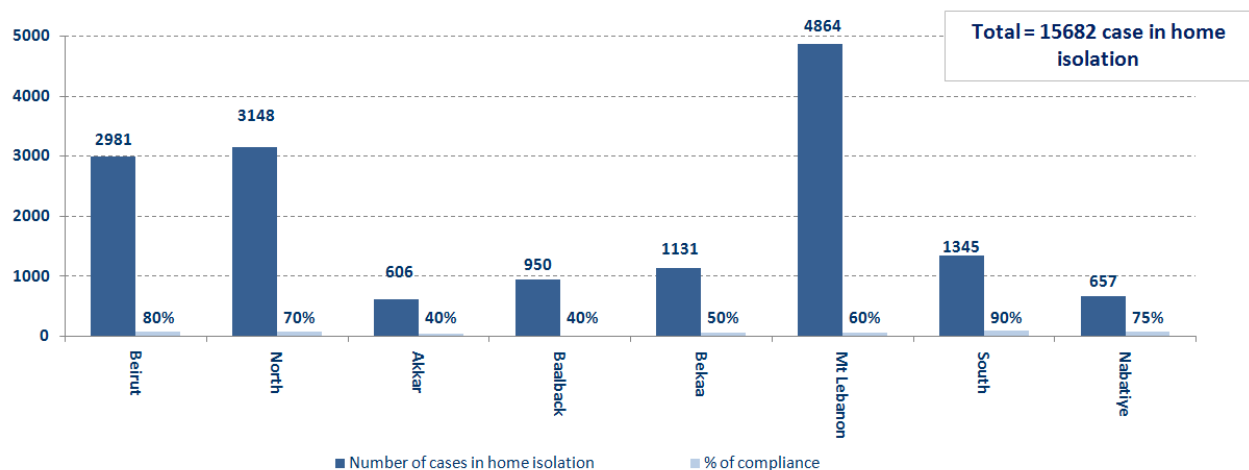
Hospital	Residence	Gender	Age	Chronic
Mazloum	Minieh Donieh	Female	23	Yes
Tripoli Gov.	Tripoli	Male	62	Yes
Herawi Gov.	Zahle	Male	63	Yes
Herawi Gov.	Zahle	Male	79	Yes
Rasul Aazam	Baabda	Female	85	
Tripoli Gov.	Akkar	Female	72	Yes

Distribution of cases by nationality

Lebanese : 36532 cases out of 39620 (88%)

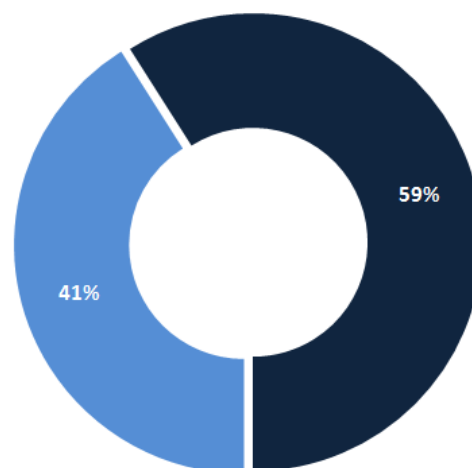
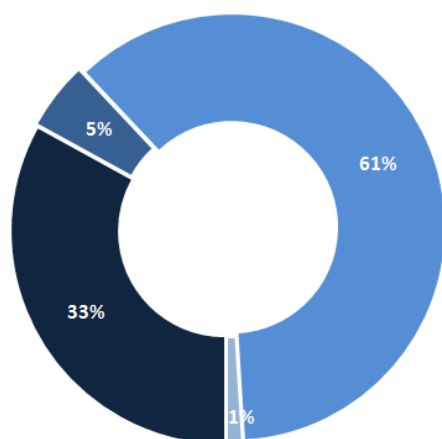


Number of individuals in home isolation and percentage of commitment to isolation



Exposure

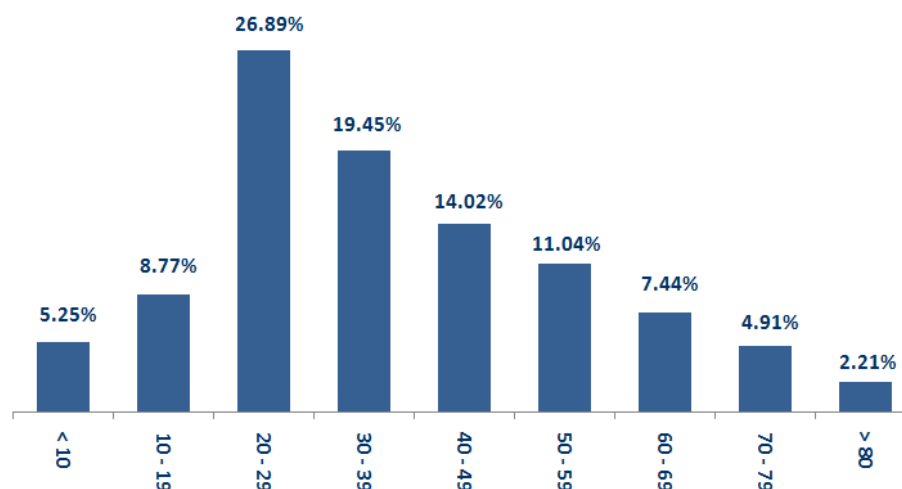
Distribution according to gender



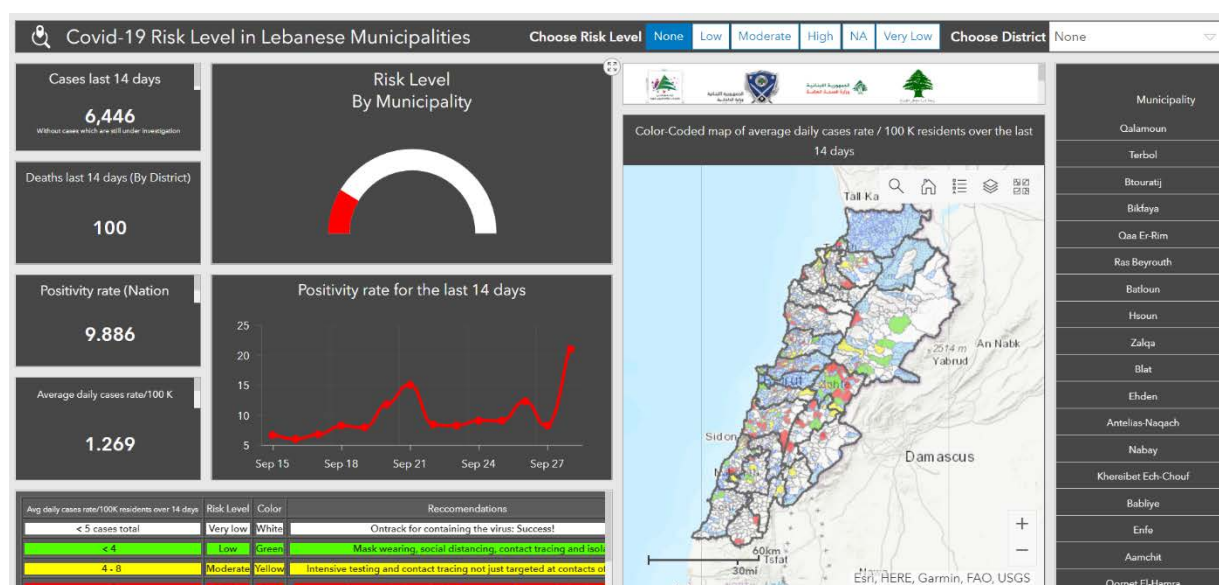
Female Male

Contact with confirmed case Travel related Under investigation Unidentified source

Distribution by age



The Online platform to measure the level of risk of the spread of the new Corona virus by district



This interactive platform allows you to know the level of risk of spreading the kurna virus according to districts, based on the number of cases registered daily and the number of residents in each district. For more information on a daily basis, you can access the following link:

<https://bit.ly/DRM-RiskLevelInMunicipalities>

The number of beds available for those infected with Coronavirus and the occupancy rate



For daily information on all the details of the bed distribution available for Covid-19 patients in the various governorates according to the hospitals:

Computer: <https://bit.ly/DRM-HospitalsOccupancy-PC>

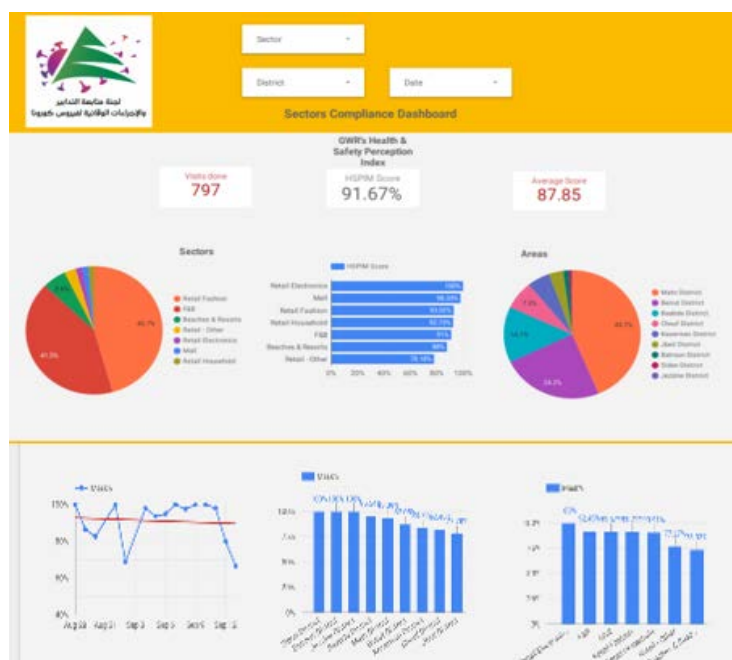
By phone: <https://bit.ly/DRM-HospitalsOccupancy-Mobile>

Online platform to track sector commitment in general mobilization procedures

Based on the recommendation issued by the National Committee for Follow-up of Preventive Measures and Measures to Confront the Coronavirus to open all sectors, provided that the general mobilization procedure (safe distance, muzzle, and hand sterilization) be applied, a special electronic platform was created that allows monitoring and measuring the percentage of commitment by various sectors on an ongoing basis.

The detailed results can be viewed directly at the following link:

<http://bit.ly/covidsectordata>



Decisions and actions taken – 30/09/2020

Ministry of Public Health

The Ministry of Public Health announced that it had opened an investigation into complaints received from arrivals to Lebanon, who had received via phone messages from laboratories the results of alleged PCR examinations conducted at the airport, while these arrivals did not undergo such tests due to their possession of PCR results from the countries from which they came.

The Ministry of Public Health issued the results of additional examinations for arrivals through Rafic Hariri International Airport on September 27, 2020, where three new cases were recorded, distributed over the following flights:

Arriving from	Company	Flight Number	Number of Positive Cases
27/9/2020			
Istanbul	MEA	266	6
Cairo	MEA	307	1
28/9/2020			
Istanbul	Turkish Airlines	828	2
Istanbul	MEA	288	1
Adana	PEGASUS	6700	2
			12

Lebanese Red Cross

233,758	Number of PCR tests transferred to laboratories	46,588 (326 New)	Number of additional ambulance centers ready to respond	48	ambulance centers	5,136 (41 New)	cases transferred to hospitals
166	Number of volunteers trained to transfer PCR tests	1,498	Number of trained paramedics	8,702 (5 New)	total number of respondents	78,977	number of those benefiting from awareness *sessions
967	The number of university volunteers trained to follow up on prevention measures in companies and institutions	291	Number of university volunteers trained to conduct awareness sessions	550	total LRC volunteers for covid19	8,539	number of trained managers for isolation centers
4,235 (5 New)	Number of beneficiaries from educational electronic platforms COVID-19	92,323 (240 New)	Number of distributed equipment	1,240,401	total distributed posters, brochures, and flyers on covid19 prevention	564 (3 New)	number of prisons that have been disinfected

General Directorate of State Security

- Reporting the closure of the South Lebanon Water Authority in Saray Bint Jbeil until September 28, 2020, after it was proven that the employees were injured to conduct checks for all employees and sterilize the center.
- Notification of the decision of the Mount Lebanon Governor to completely isolate the town of Aramoun in the Aley district, due to the increase in the number of injured in it.
- Reporting a violation committed by one of the students who went to the examination center in the Nabatiyeh region, despite her knowledge of the positive results of her examination, and the concerned authorities asked her to adhere to home quarantine, and it was also reported that the examination department would file a complaint against her with the Public Prosecution.
- Notification of the percentage of compliance with the general mobilization decision in the governorates, which came as follows within the past 24 hours:

Beirut	South	North	Akkar	Begaa	Nabateih	Baalbek Hermel	Mount Leb
50%	53%	60%	43%	N/A	78%	5%	32%

General Directorate of Internal Security Forces

- Supporting the municipalities in isolating the town of Aramoun (Aley), the Radisson Hotel in Ain Mreisse (Beirut) and the Golden Tulip Hotel in Hamra (Beirut)
-
- Writing arrest records against violators of the general closure decision

The number of seizure records during the past 24 hours					The total number of records that have been organized against violators of the general mobilization decisions since 03/08/2020	
Written records of violating institutions (absorptive capacity and preventive measures)				0		
Written records of persons violating the decision to wear a mask				0	Beirut	20,642
Written records of people violating the general mobilization decision (Aragil* and social distancing)				10	Mount Leb	18,813
Total				10	Beqaa	8,059
					North	6,784
Beirut	Mount Leb	Beqaa	North	South	South	6,878
0	0	2	0	10	Total	61,176

Ministry of Public Works and Transportation

Departing Flights		Arriving Flights	
Number of Flights	36	Number of Flights	35
Number of Departing Individuals	3,708	Number of Arrivals	2,573

Port	Entered			Left		
	Import	Direction	#	Export	Direction	#
Zahrani	Liquid Gas	Greece	1			
			1			

General announcements

N/A

Note: The decisions can be found at www.drm.pcm.gov.lb

Examples of lack of adherence to safety measures

- Demand gatherings and demonstrations.
- Failure to comply with the preventive measures and procedures required in a number of stores and markets (putting on a muzzle or face mask, sterilizing hands, maintaining a safe distance).
- Non-compliance with the 50% occupancy rate in several restaurants and amusement game centers.
- Gatherings for social events.
- Failure of those in contact with confirmed cases to adhere to home isolation procedures until the results of the laboratory tests are issued.

A list of the laboratories accredited by the MoPH to conduct PCR tests

المختبرات الحكومية المؤهلة لإجراء التشخيص المخبري لفيروس كورونا بطريقة الـ RT-PCR

الموقع	المختبر
بيروت	مستشفى رفيق الحريري الجامعي RHUH
حلبا	مستشفى حلبا الحكومي
طرابلس	مستشفى طرابلس الحكومي
البترون	مستشفى البترون الحكومي
كسروان	مستشفى قنوح كسروان الحكومي (البوار)
البيقعة	مستشفى نبيه بري الحكومي الجامعي
تبنين	مستشفى تبنين الحكومي
بنت جبيل	مستشفى بنت جبيل الحكومي
بعلبك	مستشفى بعلبك الحكومي
زحلة	مستشفى الرئيس الياز اليراي الحكومي

المختبرات الخاصة المؤهلة لإجراء التشخيص المخبري لفيروس كورونا بطريقة الـ RT-PCR

الموقع	المختبر
بيروت	مستشفى الجامعة الأميركية AUBMC
بيروت	مستشفى أوتيل ديو الجامعي (HDF) Hotel-Dieu de France
بيروت	مختبرات رودولف ميرييو (الجامعة اليسوعية - المتحف) Laboratoire Rodolphe Mérieux (Université Saint-Joseph)
بيروت	مستشفى القديس جاورجيوس الجامعي Saint-George Hospital - UMC
بيروت	مستشفى المقاصد Makassed General Hospital
بيروت	مستشفى رزق الجامعي LAU Medical Center - Rizk Hospital
بيروت	مستشفى اللبناني الجعيتاوي الجامعي Hôpital Libanais Geitawi - CHU
بيروت	مستشفى الوردية Hôpital Notre-Dame du Rosaire
بيروت	مختبر مركز الأطباء Doctor 's Center
بيروت	مختبر فونتانا (الحمرا) Fontana Laboratories
بيروت	مختبر الأمن العام (العنلثة)
بيروت	مختبرات جبر و غرة Laboratoire Jabre-Ghorra
بيروت	مختبر السان مارك Saint Marc Medical & Diagnostic Center
الغبيري	المختبرات الحديثة Laboratoire Moderne (Modern Lab- Berjaoui)
الغبيري	مستشفى الساحل Sahel General Hospital (SGH)
الغبيري	مستشفى الزهراء الجامعي
برج الزاينة	مستشفى الرسول الأعظم Al Zahraa Hospital - UMC
حارة حريك	مستشفى بهمن Al Rassoul Al Aazam Hospital Bahman Hospital
حارة حريك	مختبر ناتيونال دياغنوستك سرفيس كومباني National Diagnostic Services Company (NDSC)
المرجعة	مختبر الدكتور محمود عثمان - مركز التحاليل الطبية Medical Diagnostic Center
الجناح	مختبر أميركن دياغنوستك سنتر American Diagnostic Center (ADC)
بعنا	مستشفى جبل لبنان Mount Lebanon Hospital
بعنا	مستشفى السان جورج الحدث Hôpital Saint-George – Hadath
بعنا	مختبر الهادي Al Hadi Laboratory
بعنا	مختبر INOVIE-Liban

Hôpital du Sacré- Coeur	مستشفى قلب يسوع	الحازمية
Clinigene	مختبر كلينيجان	الحازمية
Hôpital Dr.Samir Serhal	مستشفى سرحال	المن
Transmedical for Life	مختبر ترانسميديكال فور ليف	المن
Haroun Hospital	مستشفى هارون	الزلفا
Bellevue Medical Center (BMC)	مستشفى بلو	المنصورة
Hôpital Albert Haykal	مستشفى هيكال	الكورة
Centre Hospitalier du Nord (CHN)	مركز الشمال الإستشفائي	زغرتا
Mazloun Hospital	مستشفى المظلوم	طرابلس
Al Mounla Hospital	مستشفى المنلا	طرابلس
Nini Hospital	مستشفى النيني	طرابلس
LMSE - المعهد العالي للدكتوراه، الجامعة اللبنانية	مختبر ميكروبيولوجيا الصحة والبيئة	طرابلس
CHU - Notre-Dame des Secours	مستشفى سيدة المعونات الجامعي	جبل
Lab Akiki & Boulos	مختبر عقيقي وبولس	جبل
Centre Médical Wakim	مختبر واكيم	حولية
Ain Wazein Hospital	مستشفى عين وزين	الشوف
Hammoud Hospital UMC	مستشفى حمود الجامعي	صيدا
Al Karim Medical Laboratory (KML)	مختبر الكريم	صيدا
Sheikh Ragheb Harb Hospital	مستشفى الشيخ راجب حرب	البيشة
Sabbah Diagnostic Center (SDC)	مختبر الصباح	البيشة
Jabal Amel Hospital	مستشفى جبل عامل	صور
Mashrek Diagnostic Center (MDC)	مختبر المشرق	صور
Dar Al Amal University Hospital	مستشفى دار الأمل الجامعي	بعلبك
Khoury General Hospital	مستشفى خوري	زحلة
Medical Care Center (MCC)	مختبر ميديكال كير سنتر	زحلة

مختبرات المستشفيات العسكرية

Hôpital Militaire Central	المستشفى العسكري المركزي في بيروت	بيروت
---------------------------	-----------------------------------	-------

المختبرات المؤهلة لأخذ عينات "المسحات الأنفية" بطريقة Drive- thru

Medical Diagnostic Treatment Center (MDTC)	مختبر ميديكال دياغنونميتيك تريتمانت سنتر (الحمراء)	بيروت
MedLab SAL CIC ALS	مختبر ميد لاب (الحمراء - الجفجفون)	بيروت
Itani Medical Laboratories	مختبرات عيتاني (المزرعة)	بيروت
ABC Laboratories	مختبر أ ب سي	الأشرفية
Mouawad Medical Laboratory	مختبرات معوض الطبية	الشياح
Rihan Medical Center	مختبرات الشياح (د. فؤاد ربحان)	الشياح
Expert Lab	مختبر إكسبرت لاب	المنصورة
Life LAB	مختبر لايف لاب	بعلبك
Riyak Hospital	مستشفى الرياق	رياق