



# Lebanon National Operations Room Daily Report on COVID-19

Friday, October 30, 2020

Report #226

Time Published: 11:00 PM

New in the report:

- Recommendations on the Follow-up of Preventive Measures and Measures of Coronavirus, issued on October 30, 2020
- Names of laboratories that did not specify the district, place of residence, or phone number for several positive cases, which affects the tracking of cases and the identification of contacts to conduct the necessary checks within the past 24 hours.

<b>1,751</b> New Cases		<b>79,529</b> Total Cases since 21.2.2020		<b>625</b> Total Deaths	<b>40,352</b> Total Recovered
1,673 Residents	78 Expats	77,183 Residents	2,346 Expats	15 New Deaths	1,229 New Recovered

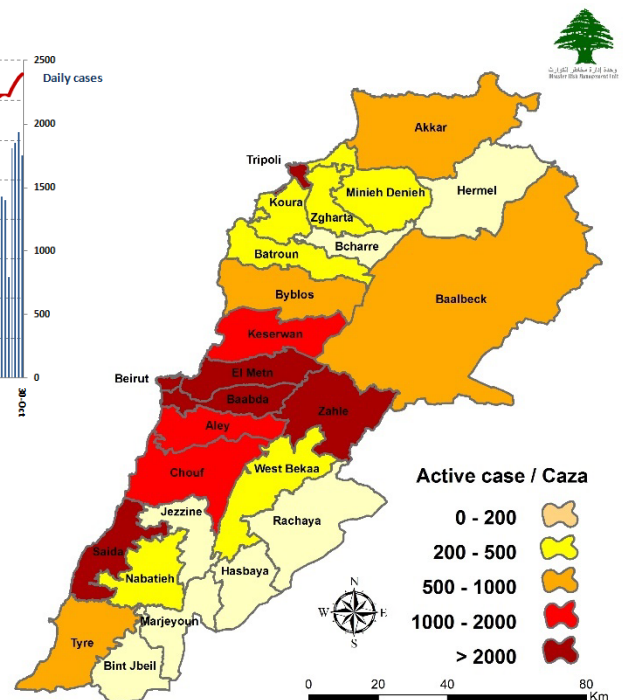
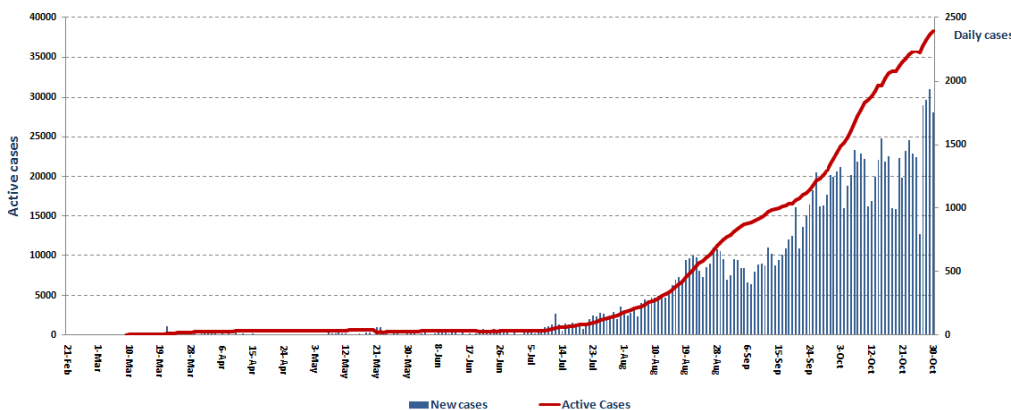
127 Deleted Status due to its recurrence	1,406 Total Cases in the Health Sector	38,552 Total Active Cases	786 Hospitalized Cases	270 Total Cases in ICU
	10 New Cases in the Health Sector	37,766 Cases in Home Isolation	516 Mild Cases	22 New Cases in ICU

1,159,498 COVID-19 Tests since 21.2.2020	Lebanon Status compared to the World		
1,266 COVID-19 Tests at Airport within 24 hrs.	Total Cumulative	79,529	45,655,031
10,910 COVID-19 tests for residents within 24 hrs.	Total Deaths	625	1,190,233
	Deaths percentage	0,78%	2.60%
	Total recoveries	40,352	33,093,939

Ref: Ministry of Public Health Data

## Number of Cases by Location

- 14,129 case is Under investigation



Beirut	106
Ein Al Mreisseh	1
Ras Beirut	5
Manara	2
Rouche	7
Hamra	7
Mseitbeh	4
Wata Al Mseitbeh	1
Mar Elias	1
Tallet AL Khayyat	2
Sanayeh	6
Zarif	1
Mazraa	4
Borj Abi Haidar	3
Tariq Jdeedeh	15
Ras Nabaa	6
Bashoura	1
Basta Tahta	3
Patriarchiat	1
Nejmeh	1
Jemmayze	1
Jeitawy	1
Jesr	1
Ashrafieh	15
Adlieh	1
Others	16
<b>Baabda</b>	<b>169</b>
Chiah	10
Jnah	8
Ouzai	10
Bir Hassan	2
Ghobeiry	13
Ein Al Rimmaneh	12
Forn Al Shebbak	3
Haret Hreik	11
Lailaky	1
Borj Al Brajneeh	22
Mrejeh	11
Tahweetet Ghadir	4
Baabda	2
Hazmieh	5
Hadat	16
Botchay	2
Loueizy	1
Bsaba	4
Abadieh	2
Dhour Al Abadieh	1
Al Qrayeh	1
Ras Al Metn	1
Kobbeih	3
Salima	4
Hasbaya	1
Bzebdine	1
Others	18
<b>Hasbayya</b>	<b>1</b>
Rashayya AL Fakhar	1

Chouf	54
Damour	1
Saadiyat	1
Naameh	1
Haret Al Naameh	1
Chhim	6
Mazboud	2
Dalhoun	1
Daraya	1
Ketermaya	2
Anout	4
Seblin	2
Barja	8
Baasir	1
Dibbieh	1
Jiyyeh	2
Wady Al Zayneh	1
Deir Al Saideh	1
Deir Al Qamar	2
Bsheftine	1
Fouaret Jaafar	1
Baaqlin	1
Mokhtara	2
Niha	3
Ammatour	1
Al Mazraa	1
Batloun	1
Bater	1
Barouk	2
Others	2
<b>Tripoli</b>	<b>57</b>
Zeitoun	8
Haddadine	1
Al Tal	3
Qebbeh	11
Zahrieh	1
Tabbaneh	1
Mina 1	3
Bsatine Al Mina	2
Beddawy	2
Madina Al Jadeeda	3
Others	22
<b>Koura</b>	<b>9</b>
Amyoun	1
Anfeh	3
Barsa	2
Nakhle	1
Others	2
<b>Rashayya</b>	<b>5</b>
Rashayya Al Wady	1
Rashayya Al Fawka	1
Kfar Qouq	3
<b>Bcharre</b>	<b>2</b>
Bcharre	1
Others	1

Kesrwen	76
Sarba	4
Kaslik	1
Zouk Michael	4
Ghadir	18
Zouk Mosbeh	3
Adonis	4
Haret Sakher	2
Sahel	2
Tabarja	3
Safra	1
Bouar	2
Oqeibe	1
Ballouneh	1
Sehaileh	5
Ein Al Rihaneh	1
Jeita	2
Ghjzir	6
Kfar Hbab	1
Borj Al Ftouh	1
Kfour	1
Harissa	1
Dar'oun	2
Reifoun	1
Ashkout	1
Raashine	1
Kfardebien	3
Blat	1
Mshaa Al Ftouh	1
Others	2
<b>Byblos</b>	<b>41</b>
Byblos	7
Mastita	2
Blat	5
Eddeh	2
Amshit	6
Halat	1
Fidar	1
Jedayel	1
Nahr Ibrahim	1
Monsef	1
Meshmesh	2
Annaya	1
Ras Osta	1
Shamat	5
Hboub	1
Hsarat	2
Mzaribe	1
Others	1
Batroun	8
Shekka	2
Kfar Hay	1
Hamat	1
Tannorine Tahta	1
Others	3

Matn	160
Borj Hammoud	12
Nabaa	1
Sin El Fil	10
Horch Tabet	1
Jdeidet A Metn	3
Bouchrieh	1
Dora	6
Rawda	5
Sed Al Bouchrieh	5
Deir Ma Roukoz	1
Dekwaneh	13
Antelias	12
Jal El Dib	6
Naqqash	1
Zalqa	7
Byaqout	1
Bellview	1
Dbayyeh	9
Deir Aoukar	1
Mansourieh	8
Fanar	4
New Fanar	1
Ein Saade	4
Roumieh	4
Bsalim	4
Mteileb	3
Rabieh	3
Qornet Chehwan	1
Rabwe	2
Beit AL Chaar	3
Mazraet Yashouh	7
Bekfayya	4
Hemlaya	2
Broummana	1
Beit Mery	2
Montiverde	3
Dahr Al Souwan	1
Mrouj	1
Douar	1
Baqaata Al Nahr	2
Others	3
<b>Zghorta</b>	<b>16</b>
Zghorta	1
Rash'een	1
Majdlayya	2
Haret Al Jdeedeh	1
Aqbeh	1
Bshannine	1
Tas Kifa	1
Aintoura	1
Mezyara	1
Meryata	1
Others	5
<b>Jezzine</b>	<b>2</b>
Jezzine	1
Mazraet Darayya	1

Akkar	43
Halba	3
Sheikh Mohammad	1
Kroum Al Arab	1
Sheikh Taba	1
Dora	1
Qantara	1
Borj Al Arab	1
Mazraet Al Baldeh	1
Mar Touma	1
Borj	2
Ein Yaakoub	1
Beit Al Haj	1
Hayssa	2
Bebnine	1
Nahr Al Bared	4
Beqayel	2
Meshmesh	4
Fneidek	1
Rahbe	1
Mashta Hammoud	1
Shadra	1
Qbayyat	1
Andkit	1
Wady Khaled	1
Akroum	1
Beddawy Camp	1
Others	6
<b>Menyeh Dunniyyeh</b>	<b>28</b>
Deir Amar	4
Menyeh	13
Bhannine	1
Seer AL Dunniyyeh	1
Nemrein	1
Beit Al Faqs	3
Btormaz	1
Markabta	1
Others	3
<b>Bint Jbeil</b>	<b>10</b>
Bint Jbeil	2
Rmeish	7
Jmeijmeh	1

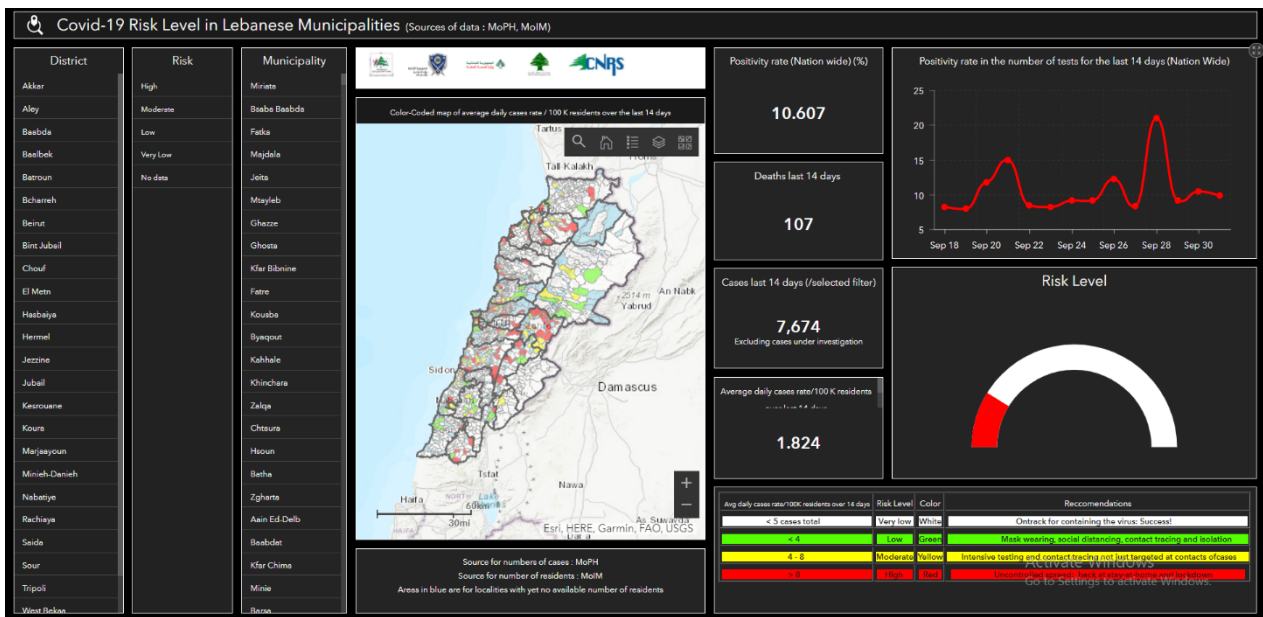
Zahleh	122
Maydan	5
Hoch Al Zaraaneh	2
Mar Michael	2
Rassieh	11
Maallaqa	3
Al Oumara Arady	2
Karmeh - Qaml	3
Hoch Al Oumara	9
Arady	1
Mar Elias	7
Forzol	1
Haql Hammana	2
Hazzarta	1
Ablah	9
Ksara	2
Chtoura	2
Makseh	5
Taalabaya	3
Saadnayel	3
Qab Elias	9
Bouarej	2
Hoch AL Sayyady	2
Bar Elias	7
Majdel Anjar	4
Riyak	5
Haret Al Feikany	1
Terbol	3
Ein Kfar Zabad	2
Kfar Zabad	4
Others	10
<b>Western Beqaa</b>	<b>40</b>
Mashghara	7
Jeb Jinnine	5
Baaloul	1
Ghazzeh	1
Qar'oun	12
Manara Hammara	3
Sweiry	1
Suhmor	1
Al Marej	6
Others	3

Baalbek	113
Baalbek	57
Hoch Tal Safieh	3
Kfar Dan	2
Arsal	3
Qaa Baalbek	4
Sha'eth	1
Bednayel	1
Qasr Nabba	2
Temnine Fawka	2
Kfar Dabash	1
Chmestar	17
Ser'een AL Tahta	1
Naby Sheeth	8
Brital	8
Bouday	1
Mazraet Sayyed	1
Others	1
<b>Hermel</b>	<b>38</b>
Hermel	24
Sahlat AL May	1
Al Qasr	2
Others	11
<b>Saida</b>	<b>64</b>
Old Saida	11
Hlalieh	2
Haret Saida	5
Qannabeh	1
Miyye w Miyye	1
Ein AL Helwe	5
Majdelyoun	3
Abra	4
Qrayyeh	1
Ghazieh	5
Maghdoushe	2
Sarafand	4
Saksakieh	1
Marwanieh	2
Khazeez	1
Kfar Hata	2
Others	14

Tyre	43
Tyre	7
Rashidieh	1
Maashouq	6
Borj AL Shemaly	4
Deir Qanoun	1
Deir Ames	3
Qana	4
Maarakeh	3
Teir Zebna	3
Tora	1
Shhour	3
Teir Falasay	1
Abbasieh	1
Rafeed	1
Qleileh	1
Naqoura	1
Others	2
<b>Nabatieh</b>	<b>17</b>
Nabatieh Tahta	2
Shoukine	1
Jbaa	1
Zefta	1
Nmeirieh	2
Dweir	1
Jebshit	2
Meifadoun	1
Adshit Shqeef	1
Eastern Zoutar	1
Qseibeh	1
Yuhmor	1
Others	2
<b>Marjeyoun</b>	<b>8</b>
Ebl El Saqy	2
Kfar Kila	3
Deir Seryan	1
Mais Al Jabal	1
Touline	1

<b>Others</b>	<b>451</b>
---------------	------------

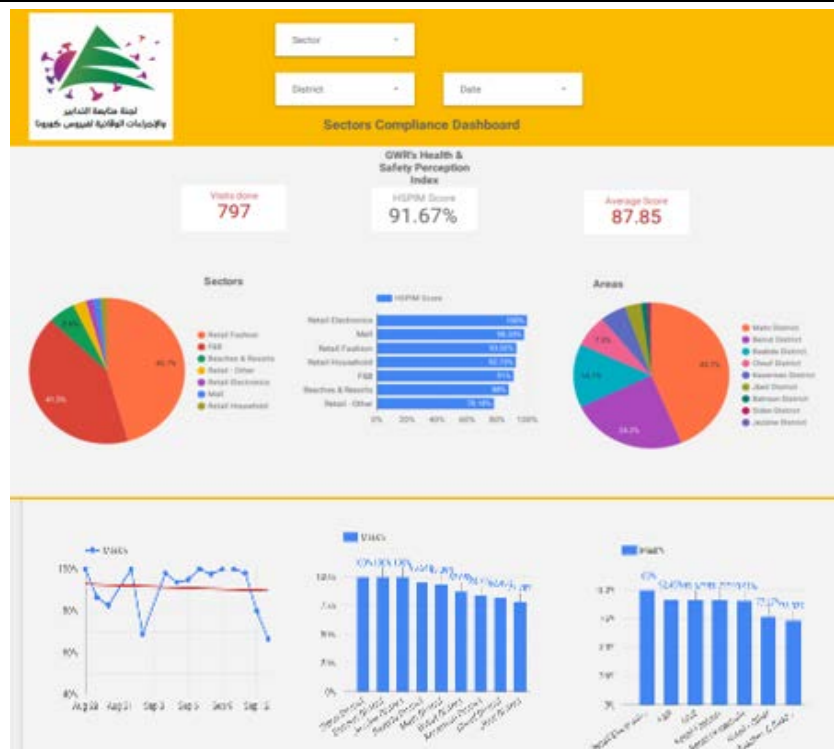
## The Online platform to measure the level of risk of the spread of the new Corona virus



This interactive platform allows you to know the level of risk of spreading the kurna virus according to districts, based on the number of cases registered daily and the number of residents in each district. For more information on a daily basis, you can access the following link:

<https://bit.ly/DRM-RiskLevelInMunicipalities>

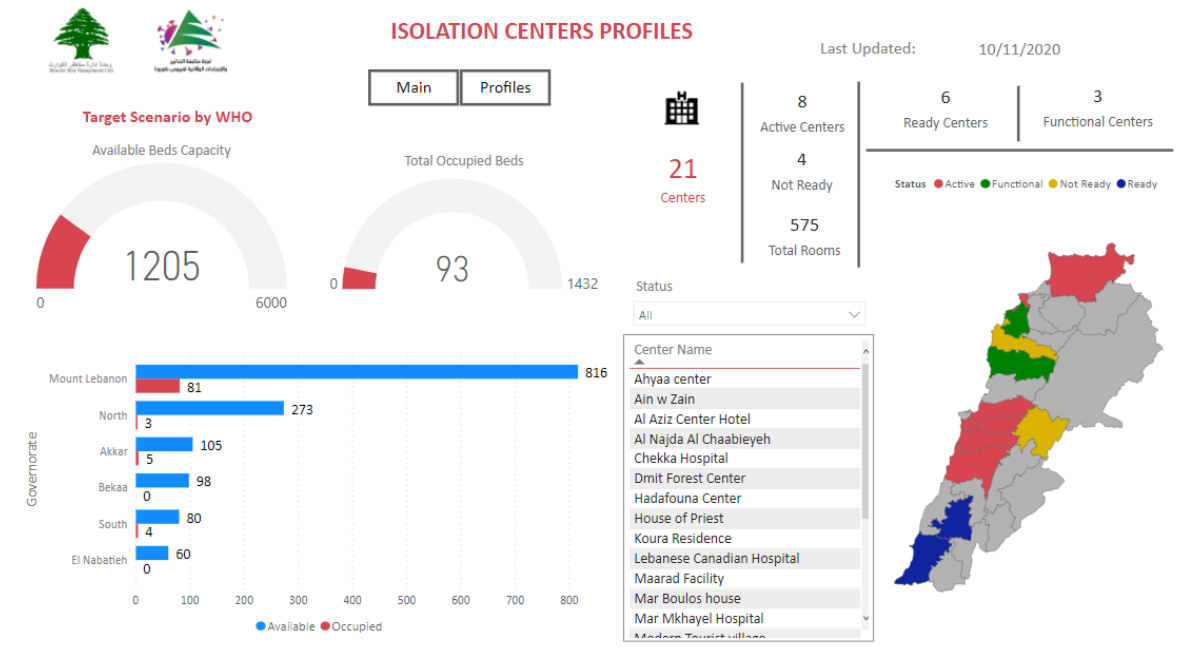
## Online platform to track sector commitment in general mobilization procedures



Based on the recommendation issued by the National Committee for Follow-up of Preventive Measures and Measures to Confront the Coronavirus to open all sectors, provided that the general mobilization procedure (safe distance, muzzle, and hand sterilization) be applied, a special electronic platform was created that allows monitoring and measuring the percentage of commitment by various sectors on an ongoing basis.

The detailed results can be viewed directly at the following link <http://bit.ly/covidsectordata>

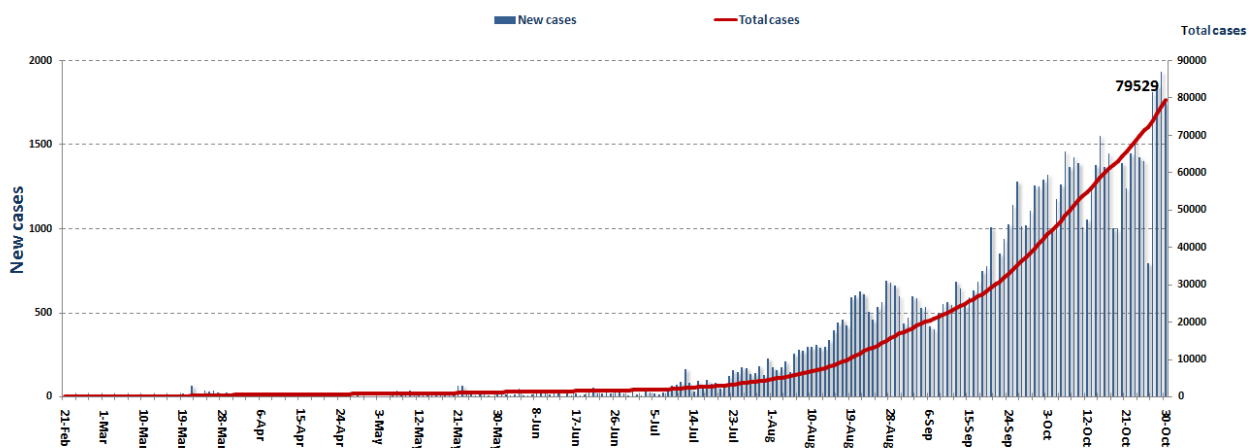
## Occupancy rate of isolation centers for cases infected with Coronavirus



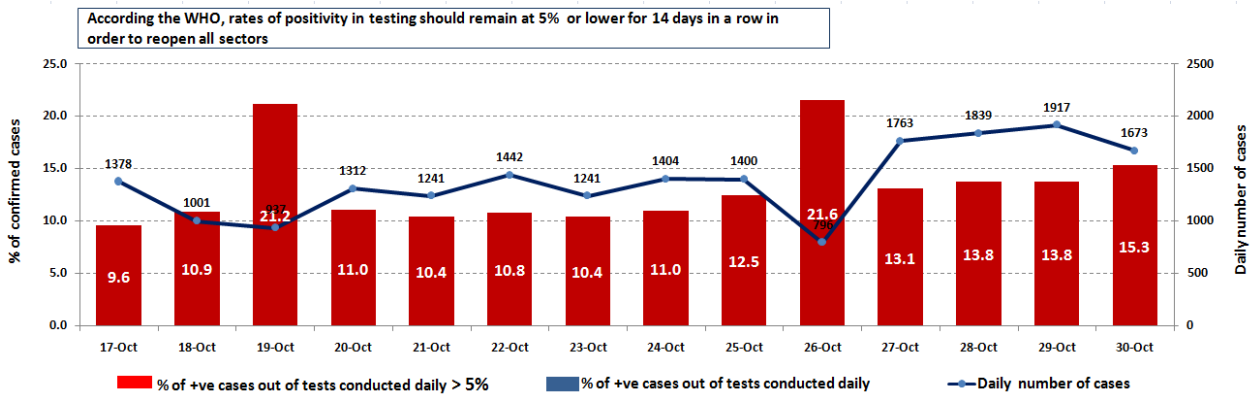
For more information about the isolation centers' distribution and the percentage of their occupancy, enter the following link: <http://bit.ly/DRM-IsolationCentersProfiles>

Note: These centers have been equipped in cooperation between the National Committee for Follow-up of Preventive Measures and Measures to Confront the Coronavirus and Governors and Municipalities, the United Nations Development Program, the World Health Organization, UNICEF, the Ministry of Public Health, the Syndicate of Nurses in Lebanon and the Syndicate of Specialists in Social Work.

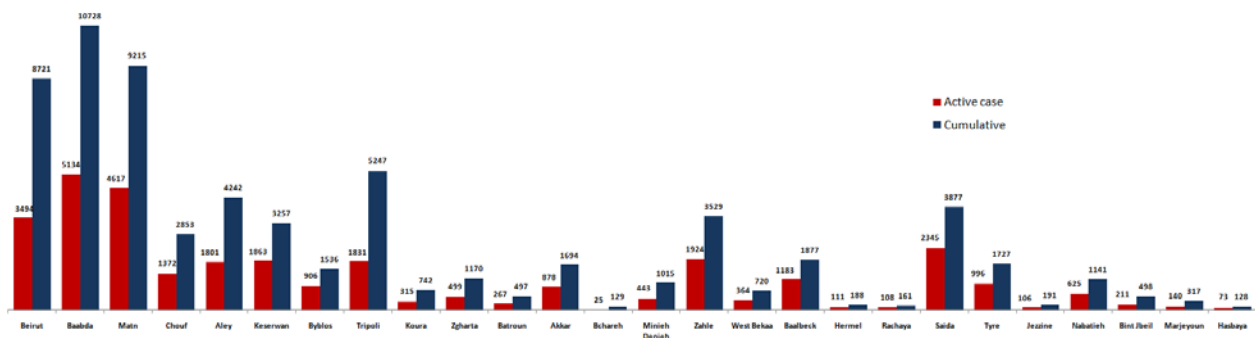
## Cases per day



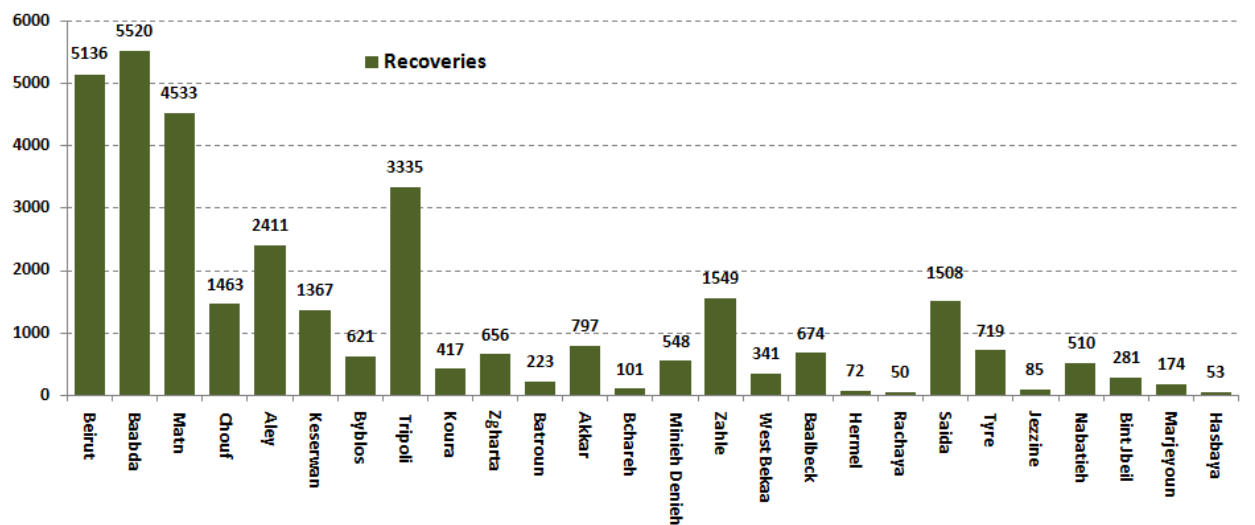
## The percentage of positive cases out of the number of daily checks (17-30 Oct 2020)



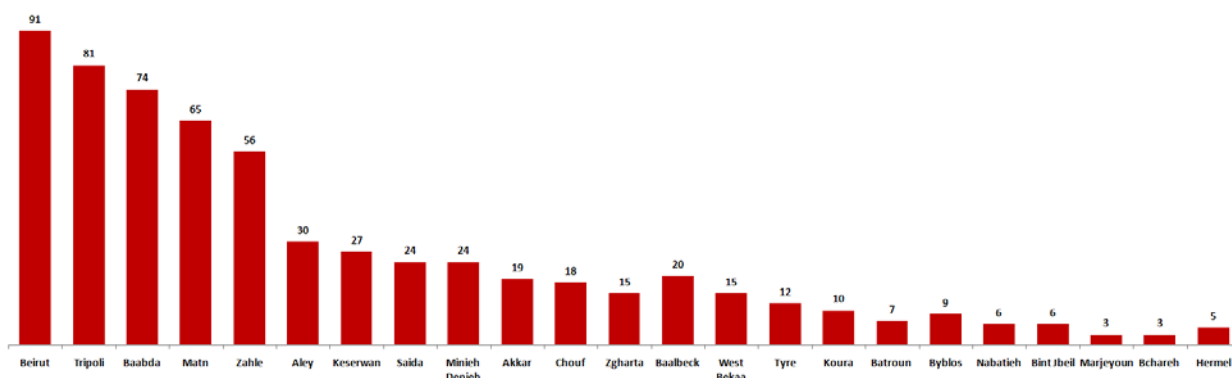
## Distribution of Active Cases by Districts



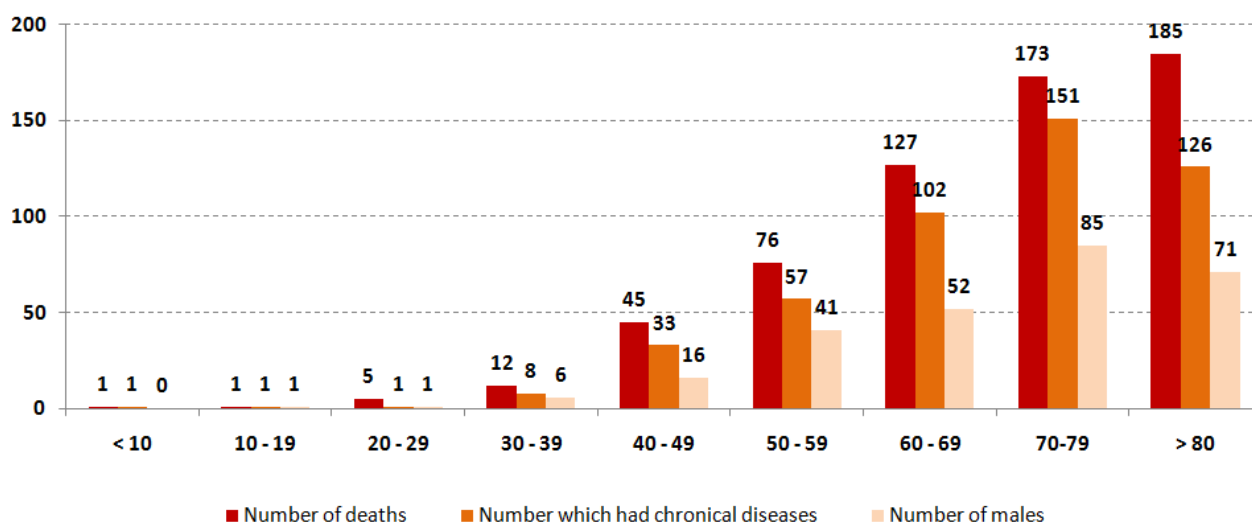
## Recoveries



### Distribution of deaths by Governorates



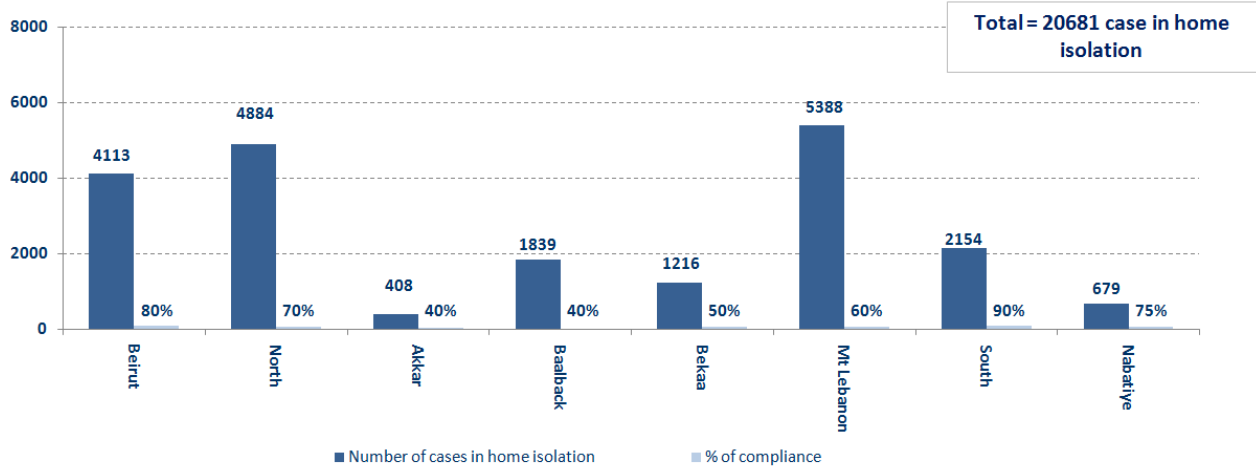
### Distribution of deaths by Age



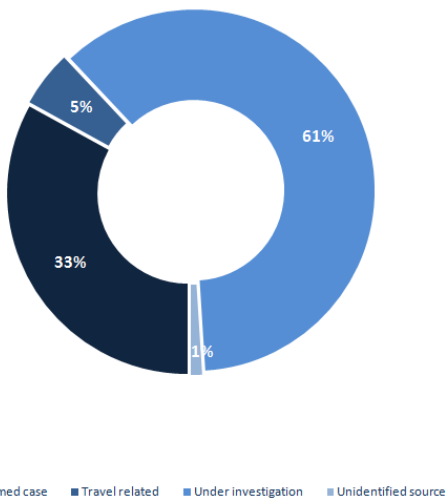
### The distribution of the recorded deaths during the past 24 hours

Hospital	Residence	Gender	Age	Chronic
Dar Al Amal	Baalbeck	Male	75	Yes
Saint George - Hadath	Saida	Male	49	No
Saint George - Hadath	Baabda	Female	82	Yes
Sacred Heart Hospital	Matn	Male	95	Yes
Salah Ghandour Hospital	Bnt Jbeil	Male	91	No
Dar Al Amal	Hermel	Male	71	Yes
Dar Al Amal	Baalbeck	Female	77	Yes
Dar Al Amal	Hermel	Male	80	Yes
Saint George – Hadath	Baabda	Male	60	No
Saint George – Hadath	Baabda	Female	51	Yes
Ftough Kesrwen Hospital	Matn	Female	80	Yes
Ftough Kesrwen Hospital	Kesrwen	Male	51	Yes
Haykal Hospital	Tripoli	Female	50	No
MSF	Zahleh	Male	64	Yes
Mazloum Hospital	Tripoli	Male	74	Yes

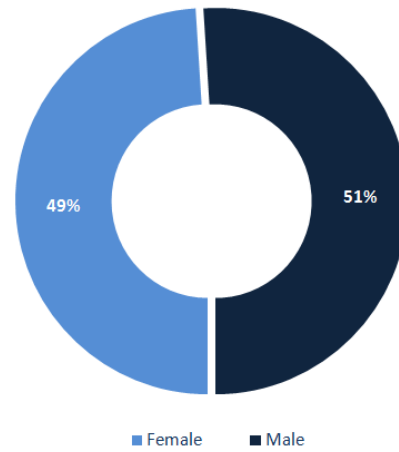
## Number of individuals in home isolation and percentage of commitment to isolation



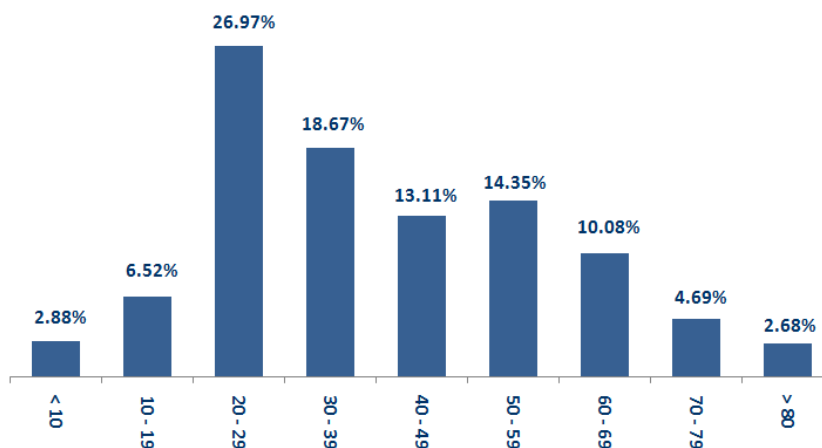
## Exposure



## Distribution according to gender



## Distribution by age





---

**Decisions and actions taken – 10/30/2020**

---



---

**Ministry of Public Health**

---

- The Ministry of Public Health is continuing to research a mechanism for twinning between university and government hospitals to train medical staff to treat Corona patients
- The Ministry of Public Health reported on the results of PCR tests for flights that arrived in Beirut and were conducted at the airport on each of the dates 10/24/2020, 10/25/2020, 10/26/2020 and 10/27/2020, and the results showed that there were seventy-nine (79) positive cases that were distributed On the following flights:

Arriving from	Company	Flight Number	Number of Positive Cases
10/24/2020			
Cairo	MEA	307	1
10/25/2020			
Istanbul	Pegasus	756	1
Adis Abab	Ethopian Airlines	406	1
Istanbul	Turkish Airlines	828	6
Baghdad	Iraqi Airways	131	4
Istanbul	MEA	266	4
Cairo	Egypt Airways	711	3
Adana	Turkish Airlines	7836	1
Al Najaf	MEA	327	3
Istanbul	MEA	268	8
Istanbul	Turkish Airlines	826	4
Cairo	MEA	307	1
Istanbul	Pegasus	863	1
Baghdad	MEA	323	5
10/26/2020			
Istanbul	Turkish Airlines	828	3
Adana	Pegasus	6700	3
Al Najaf	Iraqi Airways	139	1
Istanbul	MEA	266	9
Baghdad	MEA	323	2
Istanbul	MEA	268	2
Istanbul	Pegasus	863	1
10/27/2020			
Akra	MEA	576	1
Doha	Qatar Airways	416	1
Istanbul	Turkish Airlines	266	9
Istanbul	Turkish Airlines	826	2
Baghdad	Iraqi Airways	131	2
<b>Total</b>			<b>79</b>

---

**Lebanese Red Cross**

---

235,498	Number of PCR tests transferred to laboratories	53,189 (66 New)	Number of additional ambulance centers ready to respond	48	ambulance centers	7,244	cases transferred to hospitals
166	Number of volunteers trained to transfer PCR tests	1,498	Number of trained paramedics	8,804	total number of respondents	95,758 (484 New)	number of those benefiting from awareness *sessions
967	The number of university volunteers trained to follow up on prevention measures in companies and institutions	291	Number of university volunteers trained to conduct awareness sessions	550	total LRC volunteers for covid19	8,701	number of trained managers for isolation centers
4,509 (2171 New)	Number of beneficiaries from educational electronic platforms COVID-19	261,624 (89 New)	Number of distributed equipment	1,252,049	total distributed posters, brochures, and flyers on covid19 prevention	734 (12 New)	number of prisons that have been disinfected

---

## General Directorate of Internal Security Forces

---

The number of seizure records during the past 24 hours					The total number of records since 03/08/2020		
Written records of violating institutions (absorptive capacity and preventive measures)					4		
Written records of persons violating the decision to wear a mask					0	Beirut	21,703
Written records of people violating the general mobilization decision (Aragil* and social distancing)					297	Mount Leb	21,601
<b>Total</b>					<b>301</b>	Beqaa	9,098
						North	7,608
Beirut	Mount Leb	Beqaa	North	South		South	8,181
7	205	28	4	57		<b>Total</b>	<b>68,191</b>

---

## General Directorate of State Security

---

The report of the closure of the Civil Planning Office in Sarai Jbeil due to the infection of a staff member with the Coronavirus. - Reporting that the number of people infected with Coronavirus in the State Security Agency has reached 69. Notification of the percentage of compliance with the general mobilization decision in the governorates, which came as follows within the past 24 hours:

Beirut	South	North	Akkar	Beqaa	Nabateih	Baalbek Hermel	Mount Leb
50%	52%	80%	50%	61%	85%	15%	30%

---

## General Directorate of General Security

---

-The report of the death of a Palestinian refugee in Tripoli and a Lebanese woman from Batroun due to the Corona virus.  
- Reporting the commitment of the municipalities to the decision of the Minister of Interior and Municipalities:

Municipalities that abided by the decision	Municipalities didn't abide by the decision
Hasbaya, Al-Fardis, Ain Kafr Zabad, Qaa Al-Reem, Jdita, Rahba, Niha, Jahiliya, Amatour, Homal, Ain Anoub	Al Manara, Aandqeit

- Follow up the implementation of the required security and preventive measures at the airport, ports and border crossings.
- Reporting cases registered in the various districts and cases in home quarantine.

---

**Ministry of Public Works and Transportation**

---

Departing Flights		Arriving Flights	
Number of Flights	45	Number of Flights	44
Number of Departing Individuals	5,730	Number of Arrivals	4,726

Port	Entered			Left		
	Import	Direction	#	Export	Direction	#
Beirut	Oil	Kalamata	1	Diesel	Chekka	1
	Containers	Domyat	1			
Chekka	Diesel	Beirut	1			
Tripoli	Metals	Alexandaria	1			
	Blank	Jeddeh	1			
	Blank					
<b>Total</b>			<b>6</b>			<b>1</b>

---

**General announcements**

---

The following recommendations were issued from the meeting of the Committee for Follow-up of Preventive Measures and Procedures for Coronavirus on 10/30/2020:

- Asking private hospital owners to allocate 10% of normal beds and 20% of intensive care beds for Corona patients, within a period not exceeding one week, and in case of violation, the following measures should be applied:

- Directing books to the guarantors for not giving hospital approval.
- Reducing the classification of private hospitals.

- Requesting the Ministry of Justice to give legal advice on the possibility of placing a hand on a private hospital or closing it within the conditions of general mobilization.

- Requesting the Ministry of Interior and Municipalities to prevent curfews between nine o'clock in the evening and five in the morning in all Lebanese territories.

- Requesting the Ministry of Interior and Municipalities and the Ministry of Tourism to prohibit private and public parties and social events of all kinds in restaurants and halls

- Urging all citizens not to gather in private places and not hold family gatherings for more than 6 people. Activating the HEAT MAP closure plan in the regions to include Beirut and its suburbs in accordance with the standards of closing streets, neighborhoods, and compounds

**Note: The decisions can be found at [www.drm.pcm.gov.lb](http://www.drm.pcm.gov.lb)**

---

## **Examples of lack of adherence to safety measures**

---

Failure of some municipalities to abide by the Ministry of Interior and Municipalities Decision No. 1025/2020 related to the closure of towns that have a high risk of the spread of the epidemic.

- Demand gatherings and demonstrations.
- Failure to comply with the preventive measures and procedures required in several stores and markets (putting on a muzzle or face mask, sterilizing hands, maintaining a safe distance).
- Non-compliance with the 50% occupancy rate in several restaurants and amusement game centers.
- Gatherings for social events.
- Failure of those in contact with confirmed cases to adhere to home isolation procedures until the results of the laboratory tests are issued.

**If you feel any symptoms, call directly the hotline of the Ministry of Public Health: 1214 or 01/594459**

**Laboratories that did not comply with the procedures approved by the MoPH About the information required to be recorded for infected cases within the past 24 hours**

<b>Laboratories that did not specify the Governorate</b>	
<b>Laboratory/Hospitals</b>	<b>Cases</b>
Laboratoire Inovie / Fayyadieh	158
Hadi Laboratory/ Haret Hreik	155
Rafic Hariri University hospital	13

<b>Number of positive cases without specifying the place of residence</b>	
<b>Laboratory/Hospitals</b>	<b>Cases</b>
Laboratoire Inovie / Fayyadieh	158
Hadi Laboratory/ Haret Hreik	156
Rafic Hariri University hospital	13
Hospital Mont liban	5
Mashrek Medical Diagnostic Center MDC	5
Hospital Ain wa Zain	3
Hospital Ragheb Harb	2
Al Karim Medical Lab	2
Hospital Sacre Coeur	1

<b>Number of positive cases without a phone number</b>	
<b>Laboratory/Hospitals</b>	<b>Cases</b>
Hadi Laboratory/ Haret Hreik	24
Hospital Ain wa Zain	2
Hospital Mont liban	1

## A list of the laboratories accredited by the MoPH to conduct PCR tests

### المختبرات الحكومية المؤهلة إجراء التشخيص المخبري لفيروس كورونا بطريقة الـ RT-PCR

المختبر	الموقع
مستشفى رفيق الحريري الجامعي RHUH	بيروت
مستشفى حلبا الحكومي	حلبا
مستشفى طرابلس الحكومي	طرابلس
مستشفى البترون الحكومي	البترون
مستشفى قنوح كسروان الحكومي (البوار)	كسروان
مستشفى نبيه يزّي الحكومي الجامعي	النبطية
مستشفى تينين الحكومي	تينين
مستشفى بنت جبيل الحكومي	بنت جبيل
مستشفى بعلمك الحكومي	بعلمك
مستشفى الرئيس الياض الهراوي الحكومي	زحلة

### مختبرات المستشفيات العسكرية

المستشفى العسكري المركزي في بيروت Hôpital Militaire Central	بيروت
---	-------

### المختبرات المؤهلة لأخذ عينات "المسحات الأنفية" بطريقة Drive- thru

مختبر ميديكال دياغنوستيك تريتمانت سنتر (الحمراء) Medical Diagnostic Treatment Center (MDTC)	بيروت
مختبر ميد لاب MedLab SAL CIC ALS (الحمراء - الجبلينور)	بيروت
مختبرات عياني Itani Medical Laboratories (المرعة)	بيروت
مختبر أ ب سي ABC Laboratories	الأشرفية
مختبرات معوض الطبية Mouawad Medical Laboratory	التياح
مختبرات الشياح (د. فواد ربحان) Rihan Medical Center	التياح
مختبر إكسبرت لاب Expert Lab	المنصورة
مختبر لايف لاب Life LAB	بعلمك
مستشفى الرياق Riyak Hospital	رياق

المختبرات الخاصة المؤهلة لإجراء التشخيص المخبري لفيروس كورونا بطريقة الـ RT-PCR

المختبر	الموقع
AUBMC مستشفى الجامعة الأميركية	بيروت
Hotel-Dieu de France (HDF) مستشفى أوتيل ديو الجامعي	بيروت
مختبرات رودولف ميريو (الجامعة اليسوعية – المتحف) Laboratoire Rodolphe Mérieux (Université Saint-Joseph)	بيروت
Saint-George Hospital - UMC مستشفى القديس جارجيوس الجامعي	بيروت
Makassed General Hospital مستشفى المقاصد	بيروت
LAU Medical Center - Rizk Hospital مستشفى رزق الجامعي	بيروت
Hôpital Libanais Geitawi - CHU مستشفى اللبناني الجعيتاوي الجامعي	بيروت
Hôpital Notre-Dame du Rosaire مستشفى الوردية	بيروت
Doctor 's Center مختبر مركز الأطباء	بيروت
Fontana Laboratories (الحمرا) مختبر فونتانا	بيروت
مختبر الأمن العام (العناتية)	بيروت
Laboratoire Jabre-Ghorra مختبرات جبر وغرة	بيروت
Saint Marc Medical & Diagnostic Center مختبر السان مارك	بيروت
Laboratoire Moderne (Modern Lab- Berjaoui) المختبرات الحديثة	الغبيوي
Sahel General Hospital (SGH) مستشفى الساحل	الغبيوي
مستشفى الزهراء الجامعي	الغبيوي
Al Zahraa Hospital - UMC مستشفى الرسول الأعظم	برج الراجحة
مستشفى بهمن	
Al Rassoul Al Aazam Hospital Bahman Hospital	حارة حريك
مختبر ناتيونال دياغنوستك سرفيس كومباني	
National Diagnostic Services Company (NDSC)	حارة حريك
Medical Diagnostic Center مختبر الدكتور محمود عثمان - مركز التحاليل الطبية	المرجة
American Diagnostic Center (ADC) مختبر أميريك دياغنوستك سنتر	الجناب
Mount Lebanon Hospital مستشفى جبل لبنان	بعنا
Hôpital Saint-George – Hadath مستشفى السان جورج الحدث	بعنا
Al Hadi Laboratory مختبر الهادي	بعنا
INOIE-Liban مختبر	بعنا

Hôpital du Sacré- Coeur مستشفى قلب يسوع	الحازمية
Clinigene مختبر كلينيجان	الحازمية
Hôpital Dr.Samir Serhal مستشفى سرحال	المتن
Transmedical for Life مختبر ترانس ميدكال فور ليف	المتن
Haroun Hospital مستشفى هارون	الزلفا
Bellevue Medical Center (BMC) مستشفى بلفو	المنصورة
Hôpital Albert Haykal مستشفى هيكال	الكورة
Centre Hospitalier du Nord (CHN) مركز الشمال الإشتغاني	زغرتا
Mazloum Hospital مستشفى المظلوم	طرابلس
Al Mounla Hospital مستشفى الملا	طرابلس
Nini Hospital مستشفى النيني	طرابلس
مختبر ميكروبيولوجيا الصحة والبيئة LMSE - المعهد العالي للدكتوراه، الجامعة اللبنانية	طرابلس
CHU - Notre-Dame des Secours مستشفى سيدة المعونات الجامعي	جبل
Lab Akiki & Boulos مختبر عقيقي وبولس	جبل
Centre Médical Wakim مختبر واكيم	جونية
Ain Wazein Hospital مستشفى عين وزين	الشوف
Hammoud Hospital UMC مستشفى حمود الجامعي	سيدا
Al Karim Medical Laboratory (KML) مختبر الكريم	سيدا
Sheikh Ragheb Harb Hospital مستشفى الشيخ راجب حرب	البيتمنة
Sabbah Diagnostic Center (SDC) مختبر الصباح	البيطية
Jabal Amel Hospital مستشفى جبل عامل	صور
Mashrek Diagnostic Center (MDC) مختبر المشرق	صور
Dar Al Amal University Hospital مستشفى دار الأمل الجامعي	بعلبك
Khoury General Hospital مستشفى خوري	زحلة
Medical Care Center (MCC) مختبر ميدكال كير سنتر	زحلة