



## Lebanon National Operations Room Daily Report on COVID-19

Saturday, October 03, 2020

Report #199

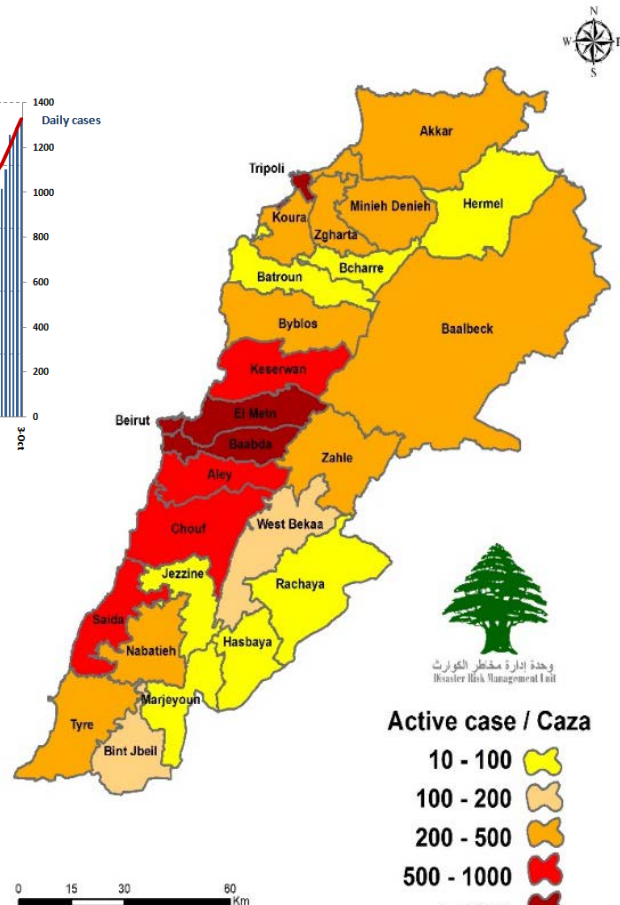
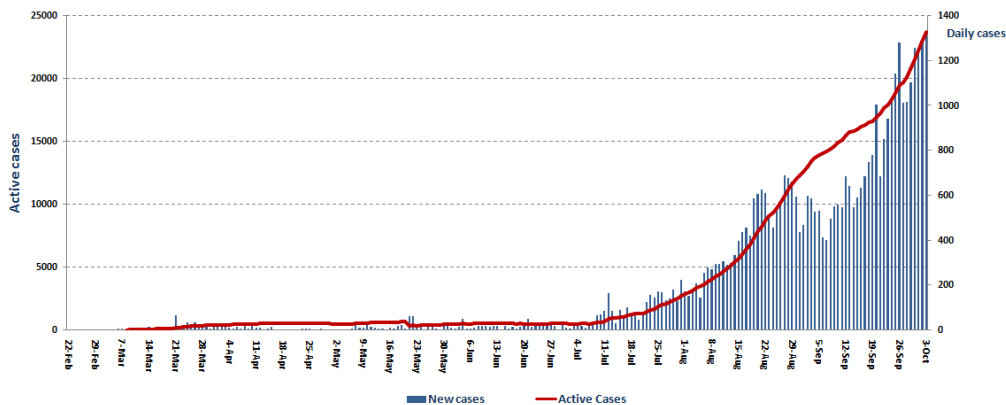
Time Published: 9:30 PM

1,321 New Cases		43,480 Total Cases since 21.2.2020		398 Total Deaths		19,259 Total Recovered	
1,284 Residents	7 Expats	40,468 Residents	1,691 Expats	12 New Deaths		522 New Recovered	
1,074 Total Cases in the Health Sector		23,823 Total Active Cases		533 Hospitalized Cases		161 Total Cases in ICU	
17 New Cases in the Health Sector		23,290 Cases in Home Isolation		372 Mild Cases		1 New Cases in ICU	
827,567 COVID-19 Tests since 21.2.2020		Lebanon Status compared to the World					
797 COVID-19 Tests at Airport within 24 hrs.		12,648 COVID-19 tests for residents within 24 hrs.		Total Cumulative		43,480	
				Total Deaths		398	
				Deaths percentage		0,91%	
				Total recoveries		19,259	
						34,956,681	
						1,034,932	
						2.96%	
						25,985,201	

Ref: Ministry of Public Health Data

### Number of Cases by Location

- 8,127 case is Under investigation



Beirut	128
Ein El Mreisseh	3
Ras Beirut	1
Raouche	3
Hamra	8
Snoubra	1
Mar Elias	2
Tallet El Khayyat	1
Zarif	4
Mazraa	9
Borj Abi Haidar	2
Basta Fawka	6
Tariq Jdideh	31
Ras El Nabeh	4
Basta Tahta	1
Majeedieh	1
Gemmayze	1
Ashrafieh	4
Others	46
Baabda	146
Chiah	9
Jnah	3
Ouzai	1
Bir Hassan	12
Ghobeiry	4
Ein El Rimmaneh	8
Forn El Chubbak	3
Haret Hreik	25
Lailaki	5
Borj El Barajne	20
Mreijeh	8
Tahweetet El Ghadir	1
Baabda	3
Hazmieh	13
Hadat	9
Kfarshima	2
Wady Shahrour	2
Talteeteh	1
Abadieh	1
Araya	1
Rweisat Salima	2
Chbanieh	2
Others	11
Aley	46
Aamrousieh	2
Hay El Sillom	4
Khaldeh	5
Al Oumara	9
Deir Qoubel	3
Aramoun	10
Bshamoun	4
Bleibel	1
Bdadoun	1
Baysour	2
Chanay	2
Mreijat	1
Others	2
Rashaya	4
Rafeed	3
Others	1

Baabda	146
Baalbek	1
Seeret Hana	1
Fakha	1
Bednayel	3
Sareen El Tahta	1
Nabe Sheeth	1
Bouday	1
Others	8
Tyre	39
Tyre	4
Rasheedieh	5
Borj Al Chemali	2
Maarakeh	1
Hannaway	1
Abbasieh	4
Sheheen	3
Teir Harfa	1
Naqoura	1
Others	17
Nabatieh	14
Kfar Remman	1
Habbouch	1
Sarba	1
Arab Salim	1
Harouf	1
Dweir	1
Jeb Sheet	3
Aabba	1
Others	4
Bint Jbeil	5
Tebnin	1
Kherbit Silim	1
Kfar Dounin	1
Yater	2
Debel	1
Marjeyoun	4
Qleiaa	1
Meis Al Jabal	1
Majdel Silim	1
Others	1
Hasbaya	2
Meemes	2
Zahle	55
Karak Nouh	1
Hoch El Oumara	3
Forzol	4
Ablah	1
Ksara	5
Taalabaya	2
Saadnayel	1
Qab Elias	1
Bwarej	2
Bar Elias	11
Majdel Anjar	3
Riayak	4
Dalhamieh	1
Others	16

Kesrwen	54
Sarba	4
Kaslik	1
Zouk Michael	5
Ghadir	3
Zouk Mosbeh	3
Adonis	1
Haret Sakher	2
Tabarja	1
Adma & Dafneh	3
Safra	1
Bouar	3
Ajaltoun	1
Ballouneh	1
Sehaileh	1
Jeita	2
Ghazir	4
Kfar Hbab	2
Chnaniir	1
Jdeidet Ghazir	1
Maarab	1
Kfour	1
Ghodras	1
Harissa	1
Ein Ebhel	1
Rayfoun	1
Qleiaat	4
Ashkout	1
Feitroun	3
Jezzine	7
Haref	1
Deir Mashmoushe	1
Aazour	1
kfar Jarra	1
Bsalya	1
Others	2
Byblos	35
Byblos	6
Mastita	7
Blat	1
Eddeh	2
Amshit	6
Halat	2
Nahr Ibrahim	1
Hsoun	1
Lehfed	1
Kharbeh	1
Hboub	1
Gherfeen	5
Others	1
Western Beqaa	27
Mashghara	2
Jeb Jennin	2
Ghazzeh	2
Hoch Al Hareemeh	1
Sweiry	1
Marej	16
Others	3
Hermel	2
Hermel	1
Others	1

Matn	123
Borj Hammoud	4
Sin El Fil	5
Jdeidet El Metn	4
Bouchrieh	2
Dora	2
Rawda	4
Sed El Bouchrieh	1
Sabtieh	2
Dekwaneh	11
Mkalles	1
Antelias	4
Manqalet Meher	1
Jal El Dib	6
Naqqash	6
Zalka	6
Dbayyeh	5
Aoukar	1
Mansourieh	6
Fanar	6
Roumieh	1
Bsalim	9
Rabieh	2
Rabwe	3
Beit El Chaar	4
Deek El Mahdi	2
Ein Aar	1
Mazraet Yashuh	2
Zikrit	1
Bekfayya	3
Ein El Rehaneh	1
Qornet El Hamra	1
Broummana	2
Al Masqa	1
Baabdat	1
Dahr El Souwan	1
Bolonia	1
Aintoura	1
Others	9
Chouf	31
Saadiyat	1
Naameh	1
Baal El Naameh	1
Haret El Naameh	1
Chhim	7
Mazboud	1
Siblin	1
Barja	4
Jiyyeh	1
Zaarourieh	1
Bshetfeen	1
Kfarheem	1
Mgheireh	1
Safa	1
Baaqleen	1
Ghreefeh	1
Mokhtara	1
Khreibeh	1
Mazraa	1
Others	3
Bcharre	1
Bcharre	1

Saida	98
Blata	1
Bramieh	1
Hlalieh	2
Haret Saida	2
Ein El Helwe	7
Abra	6
Qrayyeh	1
Bqosta	1
Ein El Delb	2
Ghazieh	6
Zrariah	1
Bablieh	1
Bisarieh	1
Najjarieh	1
Anqoun	1
Kfar Melky	2
Others	62

Tripoli	125
Bab El Ramel	3
Tal	2
Qebbeh	8
Zahrieh	3
Mina	34
Qalamoun	4
Tripoli	55
Beddawy	9
beddawy Camp	2
Others	5
<b>Zghorta</b>	<b>22</b>
Zghorta	5
Kfar Hata	1
Majdlayya	5
Bsebhel	1
Karam Sadde	1
Ehden	3
Mezyara	1
Merayat	2
Others	3

Akkar	45
Halba	2
Dora	1
Menyara	1
Mashha	2
Borj El Arab	1
Marlayet Melhem	1
Bebnin	5
Abdeh	2
Houeich	1
Hmayra	1
Jdeidet Qaytaa	1
Fneidek	1
Ouweinat	1
Qbayat	2
Andkit	1
Others	22
<b>Menyeh Dunnihyeh</b>	<b>13</b>
Menyeh	4
Bqarsouna	3
Ezal	1
Kfar Habo	1
Bakhoun	2
Others	2

Batroun	7
Batroun	1
Kfar Abida	1
Shekka	1
Hamat	3
Others	1
<b>Koura</b>	<b>21</b>
Amyoun	1
Kfar Hata	1
Betroumin	1
Btouratej	1
Anfeh	2
Ras Masqa	2
Dahr El Ein	9
Barsa	1
Nakhle	1
Others	2

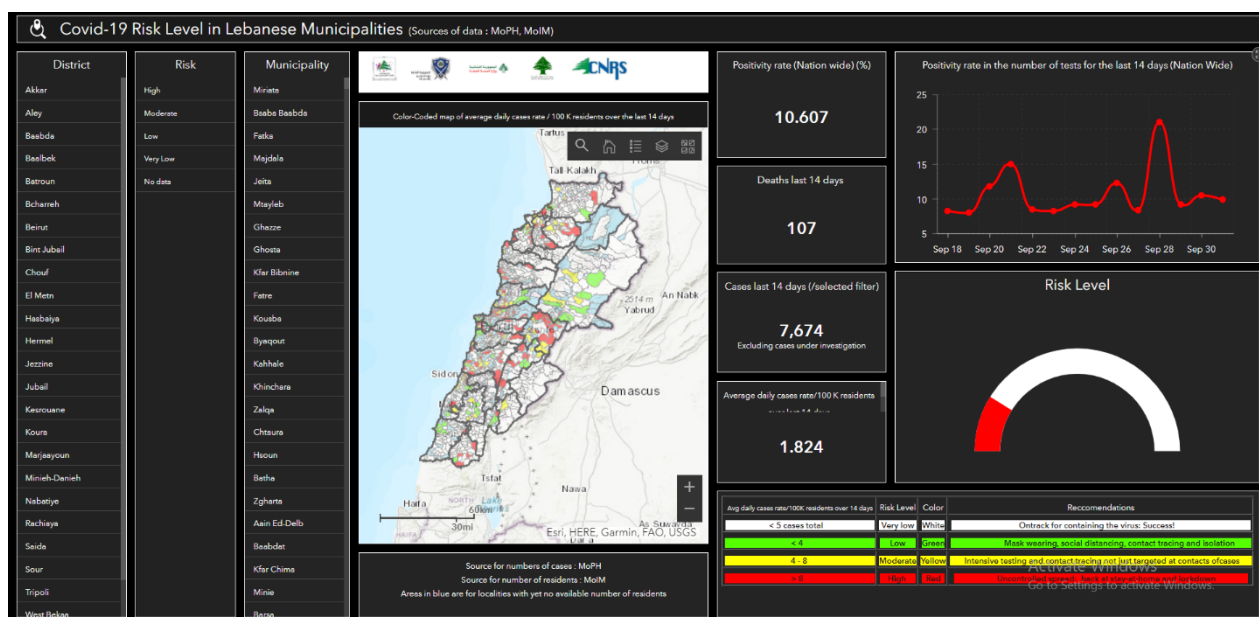
<b>Others</b>	<b>249</b>
---------------	------------

### The number of beds available for those infected with Coronavirus and the occupancy rate



For daily information on all the details of the bed distribution available for Covid-19 patients in the various governorates according to the hospitals:  
 Computer: <https://bit.ly/DRM-HospitalsOccupancy-PC>  
 By phone: <https://bit.ly/DRM-HospitalsOccupancy-Mobile>

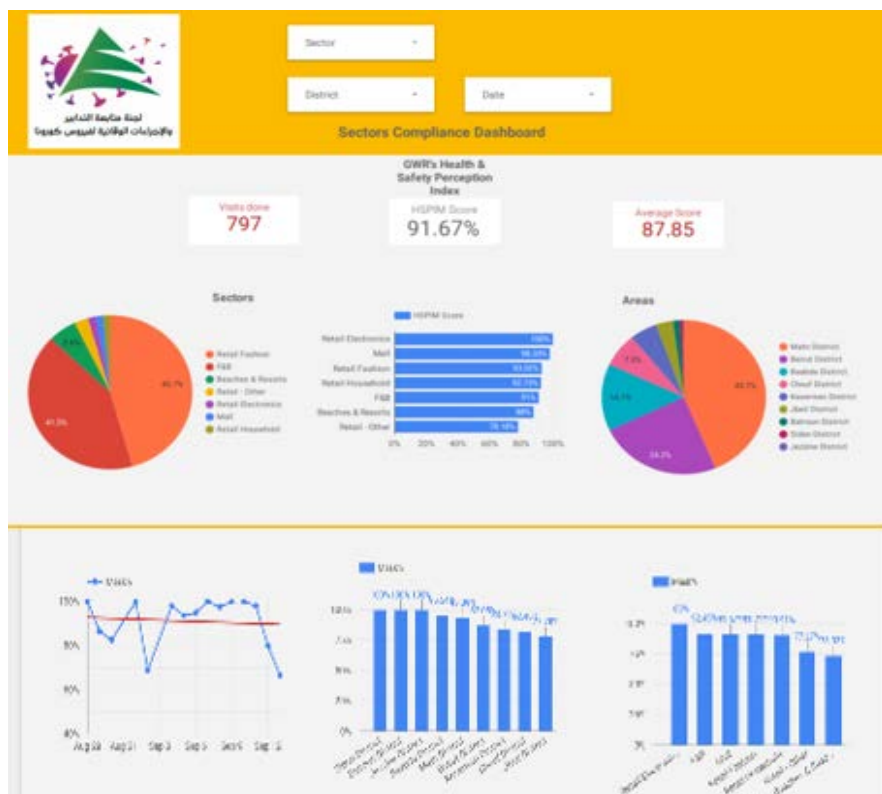
## The Online platform to measure the level of risk of the spread of the new Corona virus by district



This interactive platform allows you to know the level of risk of spreading the kurna virus according to districts, based on the number of cases registered daily and the number of residents in each district. For more information on a daily basis, you can access the following link:

<https://bit.ly/DRM-RiskLevelInMunicipalities>

## Online platform to track sector commitment in general mobilization procedures

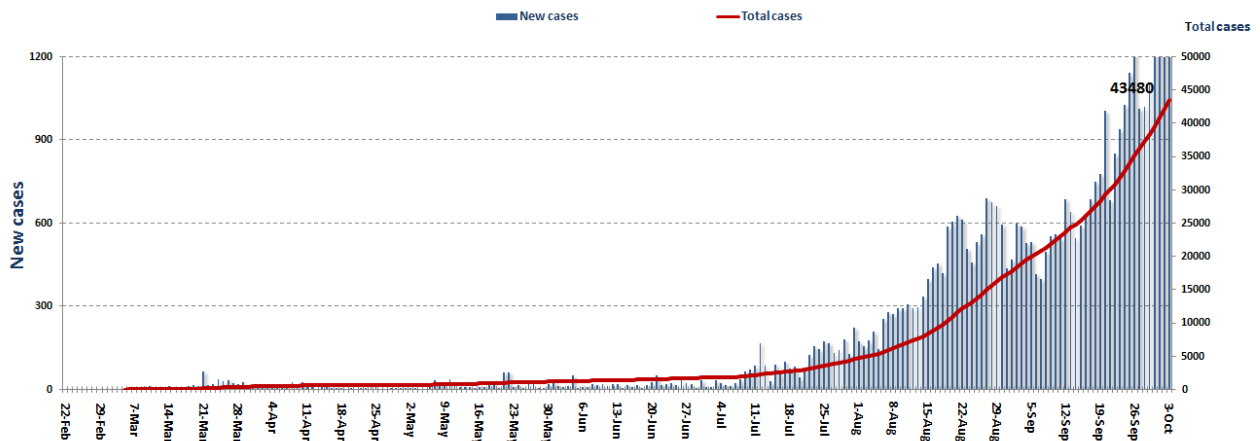


Based on the recommendation issued by the National Committee for Follow-up of Preventive Measures and Measures to Confront the Coronavirus to open all sectors, provided that the general mobilization procedure (safe distance, muzzle, and hand sterilization) be applied, a special electronic platform was created that allows monitoring and measuring the percentage of commitment by various sectors on an ongoing basis.

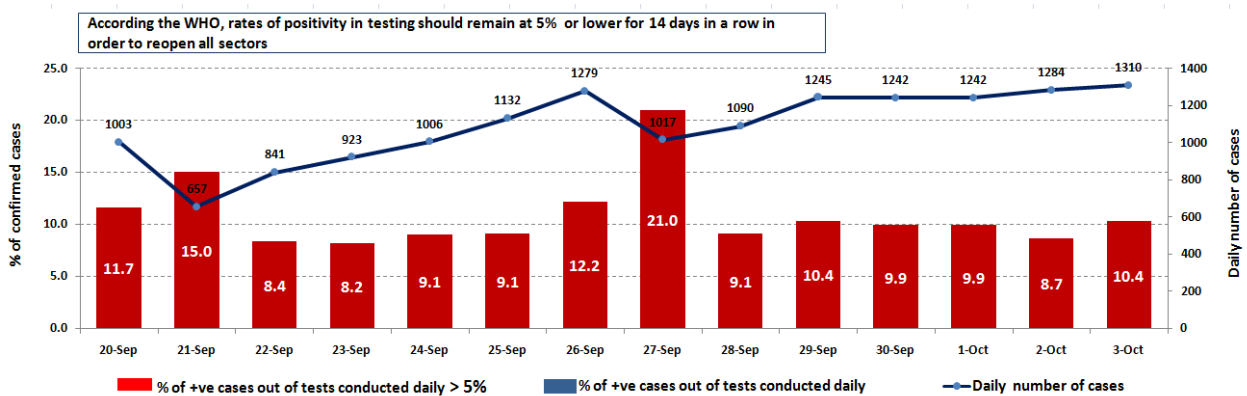
The detailed results can be viewed directly at the following link:

<http://bit.ly/covidsectordata>

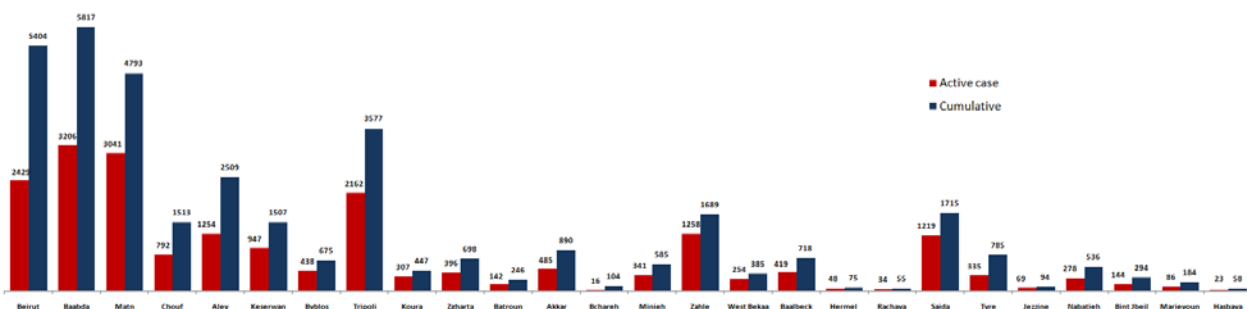
## Cases per day



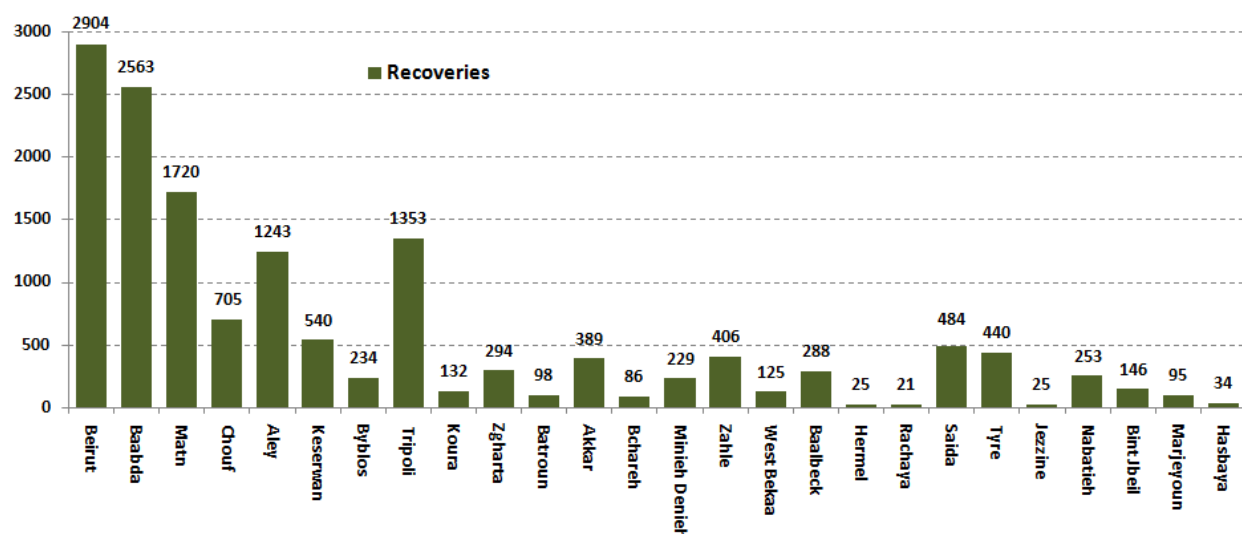
## The percentage of positive cases out of the number of daily checks (20 September to 03 October 2020)



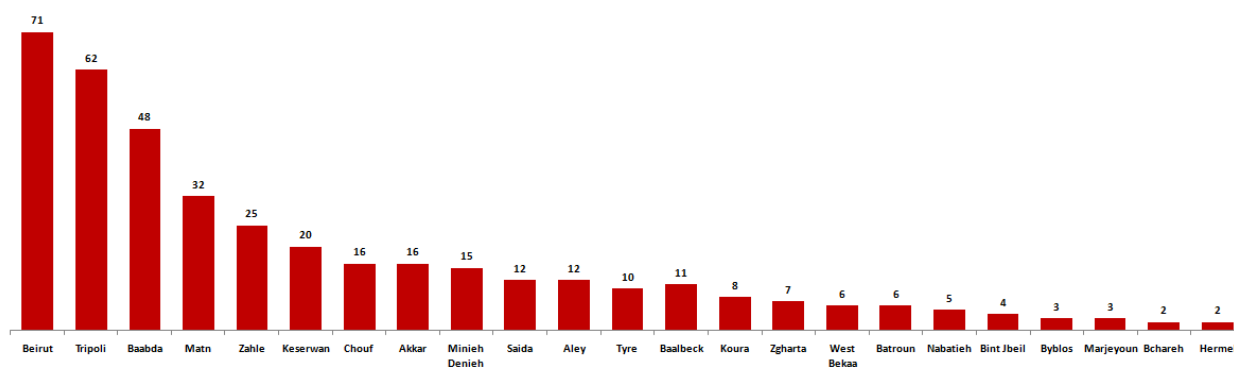
## Distribution of Active Cases by Districts



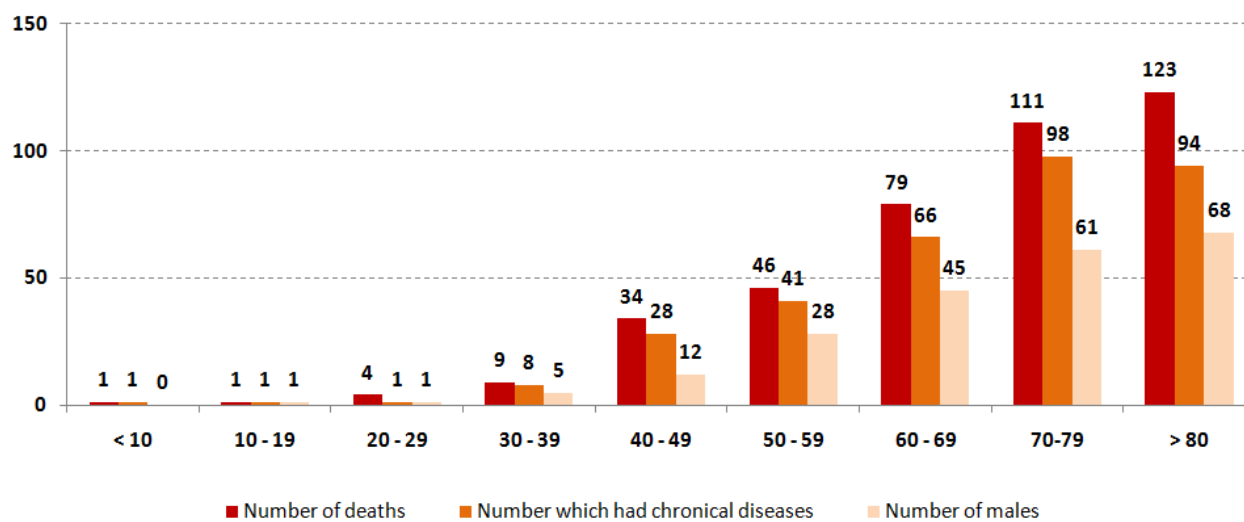
## Recoveries



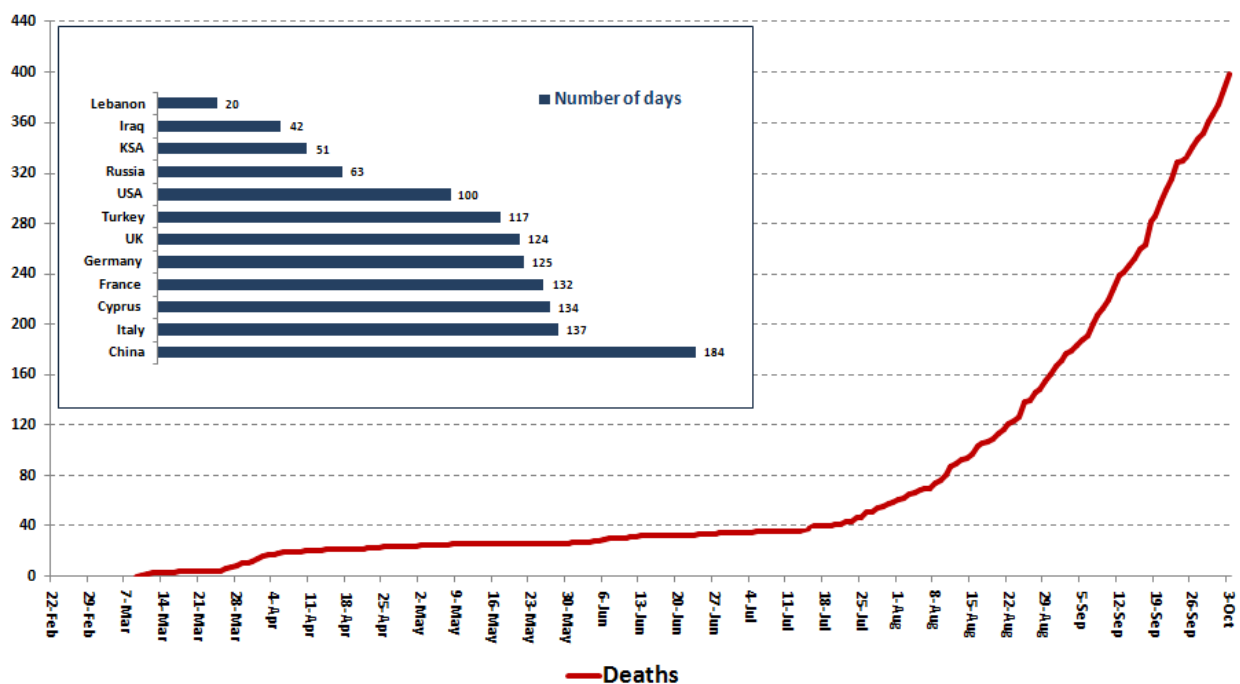
## Distribution of deaths by Governorates



## Distribution of deaths by Age



## Comparison of the rate of doubling of the number of deaths in Lebanon with other countries (death doubling rate)



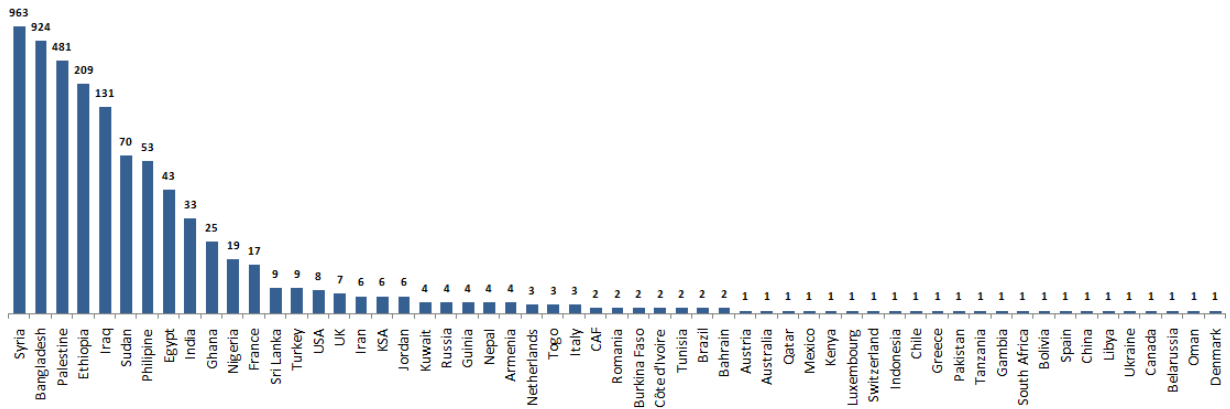
## The distribution of the recorded deaths during the past 24 hours

Hospital	Residence	Gender	Age	Chronic
Baabda Gov.	Baabda	Female	85	Yes
Mazloum	Tripoli	Female	86	Yes
Nini	Tripoli	Male	85	Yes
Dar El Amal	Zahle	Male	61	Yes
Baalback Gov.	Zahle	Female	74	Yes
Saint George	Aley	Male	49	No
Bahman	Baabda	Female	75	Yes
Dar Aazaja	Baabda	Female	96	Yes
Dar Aazaja	Baabda	Female	87	Yes
Dar Aazaja	Baabda	Female	86	Yes
AUBMC	Baalback	Female	65	Yes
Baabda Gov.	Maten	Female	83	Yes

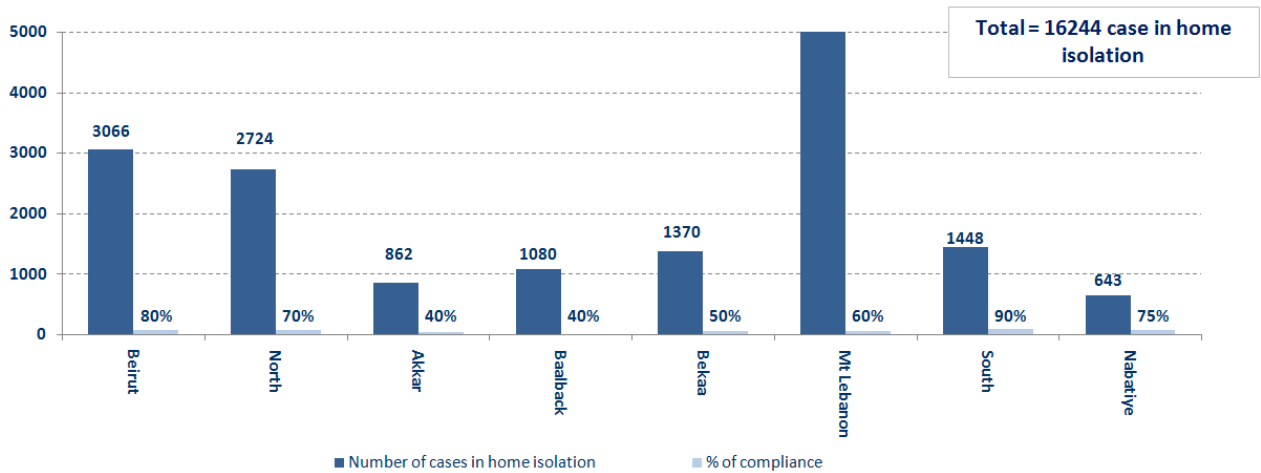


## Distribution of cases by nationality

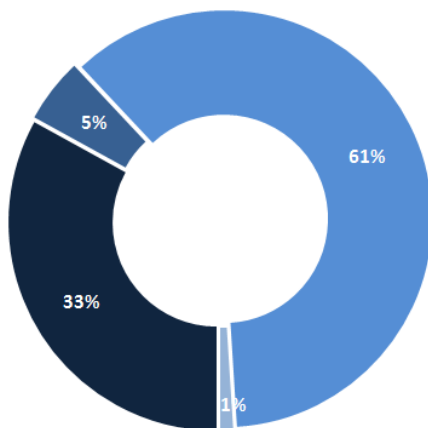
Lebanese : 39101 cases out of 43480 (88%)



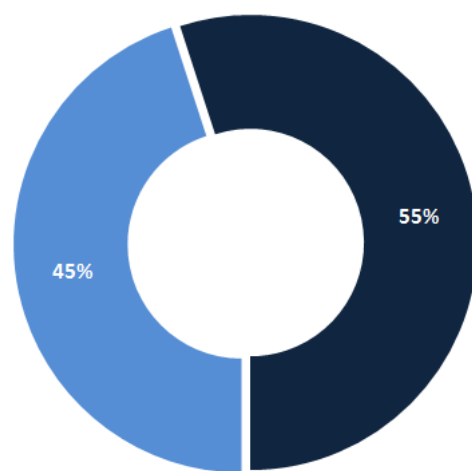
## Number of individuals in home isolation and percentage of commitment to isolation



## Exposure



## Distribution according to gender

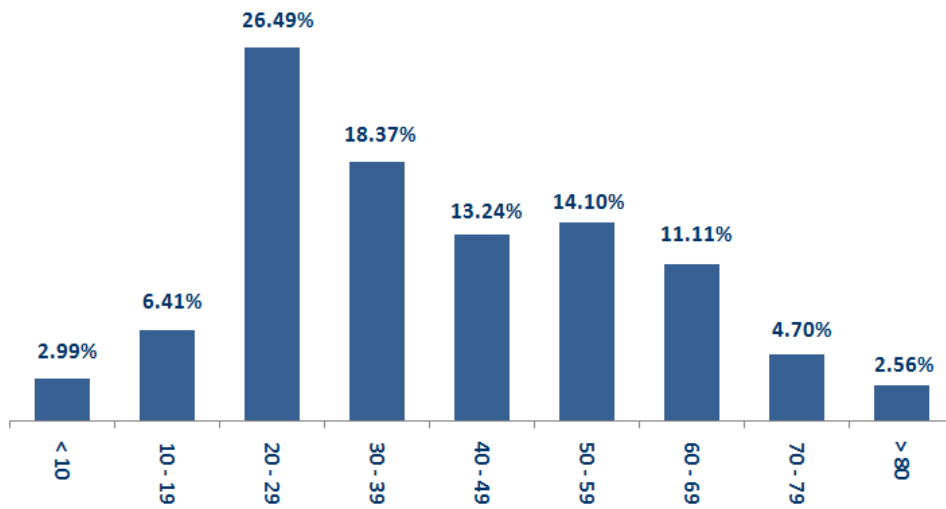




---

### Distribution by age

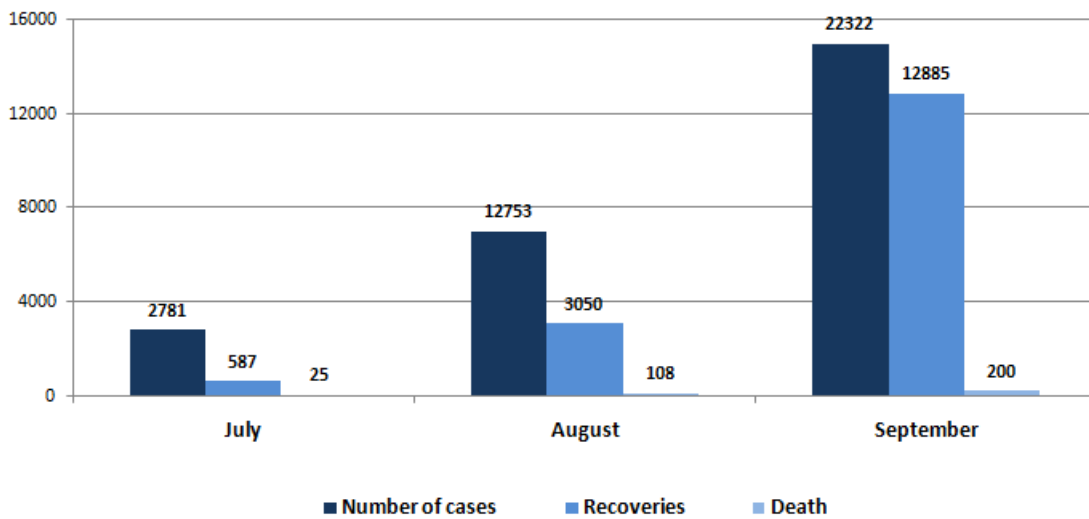
---



---

### Comparison of Number of Cases, Recoveries, and Death Between July, August, and September

---



---

## Decisions and actions taken – 03/10/2020

---



---

### Ministry of Public Health

---

The Ministry of Public Health signed an agreement between the Lebanese University and the General Directorate of Civil Aviation at the Ministry of Public Works according to which the Lebanese University would conduct PCR checks for arrivals through the airport.

---

### Lebanese Red Cross

---

233,758	Number of PCR tests transferred to laboratories	47,017 (206 New)	Number of additional ambulance centers ready to respond	48	ambulance centers	5,305 (63 New)	cases transferred to hospitals
166	Number of volunteers trained to transfer PCR tests	1,498	Number of trained paramedics	8,724	total number of respondents	79,311 (260 New)	number of those benefiting from awareness *sessions
967	The number of university volunteers trained to follow up on prevention measures in companies and institutions	291	Number of university volunteers trained to conduct awareness sessions	550	total LRC volunteers for covid19	8,567	number of trained managers for isolation centers
4,242 (2 New)	Number of beneficiaries from educational electronic platforms COVID-19	93,442 (983 New)	Number of distributed equipment	1,240,401	total distributed posters, brochures, and flyers on covid19 prevention	577 (4 New)	number of prisons that have been disinfected

## General Directorate of State Security

Reporting the closure of several villages in Akkar governorate, based on the decision of the Ministry of Interior and the municipalities, which are Al-Qobayat, Sheikh Taba, Majdalaya and Al-Muhammarah.

- Reporting official statements issued by some municipalities (Bhamdoun Al-Dayaa, Ain Darah, Al-Kahala, Houmal, and Abel Al-Saqi) requesting a review of the closure decision, especially since the number of injuries in them is limited and the municipalities are committed to all the required procedures and measures.

- The statement that there are 52 active cases among the General Directorate of State Security, and one death. Reporting cases registered in the various districts and cases in home quarantine.

Reporting the percentage of compliance with the general mobilization decision in the governorates, which came as follows within the past 24 hours:

Beirut	South	North	Akkar	Begaa	Nabateih	Baalbek Hermel	Mount Leb
45%	55%	55%	40%	N/A	65%	5%	3%

## General Directorate of Internal Security Forces

- Supporting the municipalities in isolating the town of Aramoun (Aley), the Radisson Hotel in Ain Mreisse (Beirut) and the Golden Tulip Hotel in Hamra (Beirut)
- 
- Writing arrest records against violators of the general closure decision

The number of seizure records during the past 24 hours					The total number of records that have been organized against violators of the general mobilization decisions since 03/08/2020	
Written records of violating institutions (absorptive capacity and preventive measures)				7		
Written records of persons violating the decision to wear a mask				0	Beirut	20,646
Written records of people violating the general mobilization decision (Aragil* and social distancing)				6	Mount Leb	18,816
<b>Total</b>				<b>6</b>	Beqaa	8,064
					North	6,784
Beirut	Mount Leb	Beqaa	North	South	South	6,893
4	3	1	0	6	<b>Total</b>	<b>61,203</b>

## Ministry of Public Works and Transportation

Departing Flights		Arriving Flights	
Number of Flights	36	Number of Flights	34
Number of Departing Individuals	4,001	Number of Arrivals	3,463

Port	Entered			Left		
	Import	Direction	#	Export	Direction	#
Beirut	Oil	Limassol	1	Containers	Mersin	1
	Containers	Valencia	1	Containers	Lazkiye	1
	Cars	Singapore	1	Diesel	Anfeih	1
Tripoli	Gas	Zahrani	1			
	Metals	Beirut	1			
Zahrani	Fuel Oil	Russia	1			
	Fuel Oil	Jeyyhe	1			
			<b>7</b>			<b>3</b>

## General announcements

The Ministry of Interior and Municipalities issued Decision No. 1205 on 10/2/2020 related to the closure of some villages and towns due to their high number of Coronavirus cases, as the decision kept on working at the time of preventing exit and entering the streets and roads between the first hour after midnight until the hour Six o'clock in the morning, the decision also included the closure of **111 towns** in various Lebanese regions based on an analysis of the epidemiological situation in them for a full week, starting from **Sunday 10/4/2020** until **10/12/2020** with specifying exceptions and the implementation mechanism for implementing the decision in cooperation between governors, municipalities and all security agencies.

**Note:** The decisions can be found at [www.drm.pcm.gov.lb](http://www.drm.pcm.gov.lb)

## A list of the laboratories accredited by the MoPH to conduct PCR tests

- Demand gatherings and demonstrations.
- Failure to comply with the preventive measures and procedures required in a number of stores and markets (putting on a muzzle or face mask, sterilizing hands, maintaining a safe distance).
- Non-compliance with the 50% occupancy rate in several restaurants and amusement game centers.
- Gatherings for social events.
- Failure of those in contact with confirmed cases to adhere to home isolation procedures until the results of the laboratory tests are issued.

## Examples of lack of adherence to safety measures

### المختبرات الحكومية المؤهلة لإجراء التشخيص المخبري لفيروس كورونا بطريقة الـ RT-PCR

المختبر	الموقع
مستشفى رفيق الحريري الجامعي RHUH	بيروت
مستشفى حلبا الحكومي	حلبا
مستشفى طرابلس الحكومي	طرابلس
مستشفى البترون الحكومي	البترون
مستشفى فتوح كسروان الحكومي (البوار)	كسروان
مستشفى نبيه بري الحكومي الجامعي	النبطية

### مختبرات المستشفيات العسكرية

المستشفى العسكري المركزي في بيروت Hôpital Militaire Central	بيروت
---	-------

### المختبرات المؤهلة لأخذ عينات "المسحات الأنفية" بطريقة Drive- thru

مختبر ميدنيكال دياغنوستيك تريتمنت سنتر (الحمراء)	بيروت
Medical Diagnostic Treatment Center (MDTC)	بيروت
مختبر ميد لآب MedLab SAL CIC ALS (الحمراء - الجبلين)	بيروت
مختبرات عيتاني Itani Medical Laboratories (المزرعة)	بيروت
مختبر أ ب سي ABC Laboratories	الأشرفية
مختبرات معوض الطبية Mouawad Medical Laboratory	الشياح
مختبرات الشياح (د. فؤاد ربحان) Rihan Medical Center	الشياح
مختبر إكسبيرت لآب Expert Lab	المنصورة
مختبر لايف لآب Life LAB	بعلبك
مستشفى الرياق Riyak Hospital	رياق



المختبرات الخاصة المؤهلة لإجراء التشخيص المخبري لفيروس كورونا بطريقة الـ RT-PCR

الموقع	المختبر
بيروت	مستشفى الجامعة الأميركية AUBMC
بيروت	مستشفى أوتيل ديو الجامعي (HDF) Hotel-Dieu de France
بيروت	مختبرات رندولف ميريو (الجامعة اليسوعية – المتحف) Laboratoire Rodolphe Mérieux (Université Saint-Joseph)
بيروت	مستشفى القديس جاورجيوس الجامعي Saint-George Hospital - UMC
بيروت	مستشفى المقاصد Makassed General Hospital
بيروت	مستشفى رزق الجامعي LAU Medical Center - Rizk Hospital
بيروت	مستشفى اللبناني الجعيتاوي الجامعي Hôpital Libanais Geitawi - CHU
بيروت	مستشفى الوردية Hôpital Notre-Dame du Rosaire
بيروت	مختبر مركز الأطباء Doctor 's Center
بيروت	مختبر فونتانا (الحمرا) Fontana Laboratories
بيروت	مختبر الأمن العام (العنالية)
بيروت	مختبرات جبر وغرة Laboratoire Jabre-Ghorra
بيروت	مختبر السان مارك Saint Marc Medical & Diagnostic Center
الغبري	المختبرات الحديثة Laboratoire Moderne (Modern Lab- Berjaoui)
الغبري	مستشفى الساحل Sahel General Hospital (SGH)
الغبري	مستشفى الزهراء الجامعي
برج الزاجنة	مستشفى الرسول الأعظم Al Zahraa Hospital - UMC
حارة حريك	مستشفى بهمن Bahman Hospital Al Rassoul Al Aazam Hospital
حارة حريك	مختبر ناتيونال دياغنوستك سرفيس كومباني National Diagnostic Services Company (NDSC)
الربيع	مختبر الدكتور محمود عثمان - مركز التحاليل الطبية Medical Diagnostic Center
الجناب	مختبر أميريك دياغنوستك سنتر American Diagnostic Center (ADC)
بعنا	مستشفى جبل لبنان Mount Lebanon Hospital
بعنا	مستشفى السان جورج الحدث Hôpital Saint-George – Hadath
بعنا	مختبر الهادي Al Hadi Laboratory
بعنا	مختبر INOVIE-Liban

الحازمية	مستشفى قلب يسوع Hôpital du Sacré- Coeur
الحازمية	مختبر كلينوجان Clinigene
المن	مستشفى سرحال Hôpital Dr.Samir Serhal
المن	مختبر ترانس ميدكال فور ليف Transmedical for Life
الزلفا	مستشفى هارون Haroun Hospital
المنصورة	مستشفى بلغو Bellevue Medical Center (BMC)
الكورة	مستشفى هيكال Hôpital Albert Haykal
زغرتا	مركز الشمال الإستشفائي Centre Hospitalier du Nord (CHN)
طرابلس	مستشفى المظلوم Mazloum Hospital
طرابلس	مستشفى المنلا Al Mounla Hospital
طرابلس	مستشفى النيني Nini Hospital
طرابلس	مختبر ميكروبيولوجيا الصحة والبيئة LMSE - المعهد العالي للدكتوراه، الجامعة اللبنانية
جبل	مستشفى سيدة المعونات الجامعي CHU - Notre-Dame des Secours
جبل	مختبر عقيقي وبولس Lab Akiki & Boulos
جولية	مختبر واكيم Centre Médical Wakim
الشوف	مستشفى عين وزين Ain Wazein Hospital
صيدا	مستشفى حمود الجامعي Hammoud Hospital UMC
صيدا	مختبر الكريم Al Karim Medical Laboratory (KML)
البيشة	مستشفى الشيخ راجب حرب Sheikh Ragheb Harb Hospital
البيشة	مختبر المباح Sabbah Diagnostic Center (SDC)
صور	مستشفى جبل عامل Jabal Amel Hospital
صور	مختبر المشرق Mashrek Diagnostic Center (MDC)
بعلبك	مستشفى دار الأمل الجامعي Dar Al Amal University Hospital
زحلة	مستشفى خوري Khoury General Hospital
زحلة	مختبر ميديكال كير سنتر Medical Care Center (MCC)