



Lebanon National Operations Room Daily Report on COVID-19



Tuesday, September 29, 2020

Report #195

Time Published: 10:00 PM

New in the report:

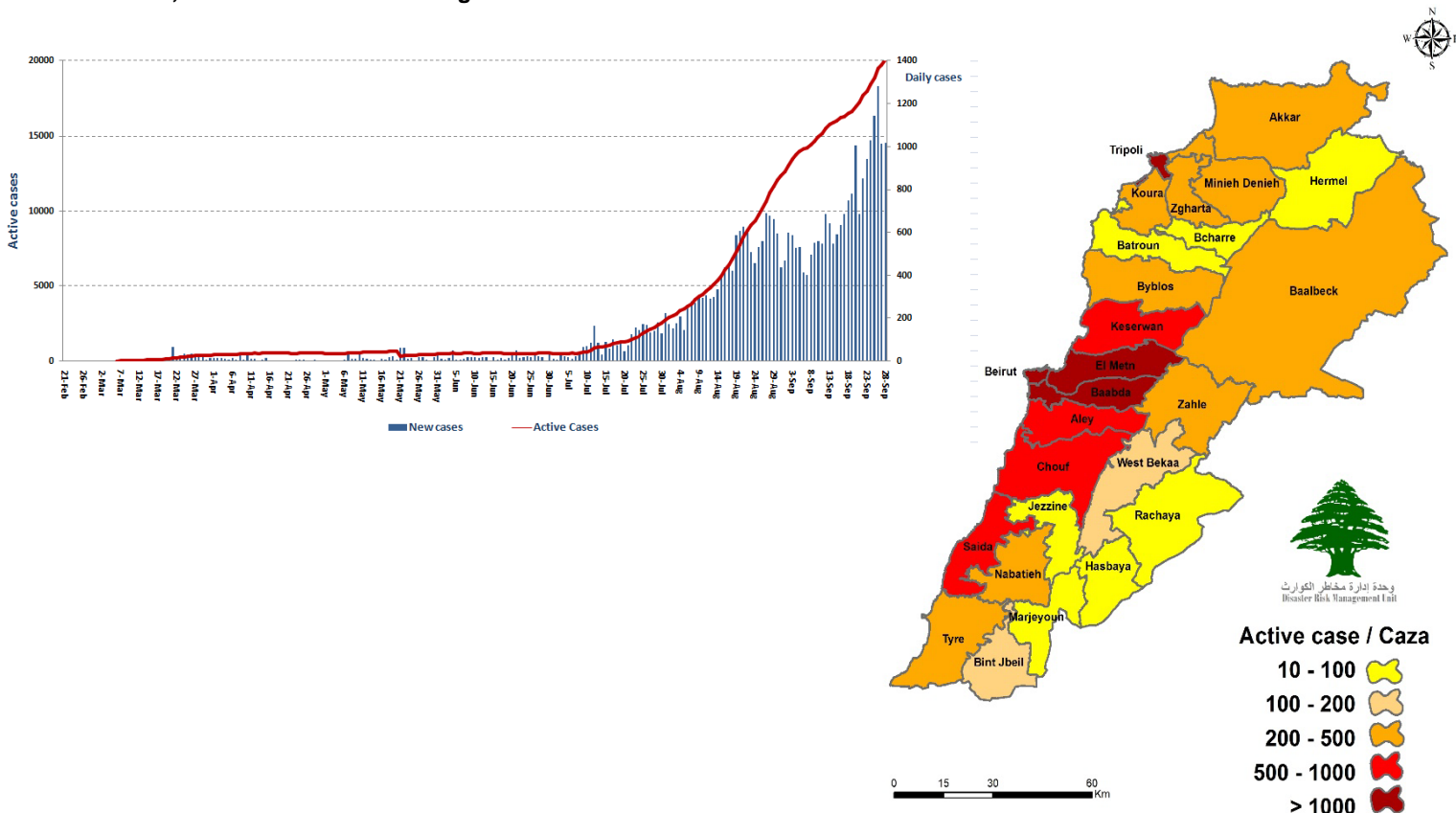
An interactive electronic platform to measure the risk of the spread of the new Corona virus at the district level.

1,105 New Cases		38,363 Total Cases since 21.2.2020		361 Total Deaths		17,110 Total Recovered	
1,090 Residents	15 Expats	36,698 Residents	1,665 Expats	10 New Deaths		432 New Recovered	
1,001 Total Cases in the Health Sector		20,892 Total Active Cases		541 Hospitalized Cases		170 Total Cases in ICU	
21 New Cases in the Health Sector		20,351 Cases in Home Isolation		371 Mild Cases		0 New Cases in ICU	
785,703 COVID-19 Tests since 21.2.2020		Lebanon Status compared to the World					
913 COVID-19 Tests at Airport within 24 hrs.		11,948 COVID-19 tests for residents within 24 hrs.		Total Cumulative		38,363	
				Total Deaths		361	
				Deaths percentage		0,94%	
				Total recoveries		17,110	
						33,643,962	
						1,008,095	
						2,99%	
						24,951,618	

Ref: Ministry of Public Health Data

Number of Cases by Location

- 7,365 case is Under investigation



Beirut	Cases
Ein El Mreisseh	2
Ras Beirut	3
Rouche	7
Hamra	1
Ein El Teeneh	1
Mseitbeh	2
Mar Elias	1
Zarif	1
Mazraa	9
Basta Fawqa	1
Tariq Al Jdeedeh	7
Horsh	1
Ras El Nabaah	5
Basta Tahta	1
Jesr	4
Ashrafieh	14
Adlieh	1
Others	7
Keserwan	Case
sarba	6
Zouk Michael	9
Ghadir	2
Zouk Mosbeh	10
Adonis	2
Haret Sakher	4
Sahel Alma	4
Bouar	1
Ajaltoun	2
Ballone	5
Heita	1
Kfarhbab	1
Shnaniir	1
Ghosta	1
Harissa	1
Qleiaat	2
Ashkout	2
Hrajel	2
Others	1
Jbeil	Cases
Jbeil	3
Mastita	1
Blat	1
Eddeh	1
Amchit	2
Halat	1
Fidar	1
Jedayel	1
Monsef	1
Zebdeen	1
Gherfeen	2
Qartaba	1
Others	7
Marjeyoun	Cases
Ebl El Saki	1
Hasbayya	Cases
Shebaa	1

Matn	Cases
Borj Hammoud	19
Nabaa	1
Sin El Fil	3
Horsh Tabet	1
Jdeidet El Metn	1
Bouchrieh	5
Dora	3
Rawda	3
Sed El Bouchrieh	1
Dekwene	14
Antilias	9
Jal El Dib	5
Naqqash	3
Zalka	8
Byaqout	1
Dbayeh	4
Aoukar	4
Mansourieh	11
Fanar	4
Ein Saadeh	2
Roumieh	2
Bqennaya	1
Bsalim	6
Mteileb	1
Rabieh	3
Beit El Kikko	1
Rabweh	4
Beit El Chaar	1
Mazraet Yashouh	2
Zikrit	2
Beit Shabab	1
Hemlaya	1
Broummana	3
Qannabet Broummana	1
Baabdat	3
Beit Merry	3
Khenshara	1
Airoun	1
Others	8
Akkar	Cases
Takreet	1
Al Borj	2
Abboudieh	1
Bebneen	1
Nahr El Bared	3
Abdah	1
Houeich	1
Qebeet	1
Fneidek	3
Majdala	1
Ferdees	1
Rayhaniyyeh	1
Aidamoun	1
Qbayyat	7
Wadi Khaled	1
Others	19

Zgharta	Cases
Zghorta	4
Kfarhatta	1
Erdeh	2
Majdlayya	6
Ehden	2
Kfar Sghab	1
Mezyara	5
Meryata	2
Others	10
Chouf	Cases
Saadiyat	1
Chhim	3
Ketermaya	2
Barja	6
Baasir	1
Debbiyyeh	1
Jiyyeh	1
Wadi Zayneh	2
Rmeileh	1
Deir El Qamar	2
Semqaniyyeh	1
Kfar Qatra	1
Kfarheem	1
Shoureet	1
Baaqleen	1
Baqaata	2
Niha	2
Baadaran	1
Kfarnabrakh	1
Btalloun	1
Maaser El Chouf	1
Barouk	1
Others	4
Nabatieh	Cases
Nabatieh Tahta	4
Nabatih El Fawka	2
Kfarremman	1
Shoukeen	2
Habbouch	2
Kfour	2
Arabsaleem	1
Deir Zahrani	1
Toul	2
Mayfadoun	1
Ansar	2
Zaoutar El Sharkieh	1
Qaaqaaayet El Jisr	1
Kfarseer	1
Others	2
Menyh Dunniiyh	Cases
Deir Aamar	1
Menyeh	2
Bqarsouna	1
Others	3

Baabda	Cases
Chhiah	6
Jnah	5
Ouzai	3
Ghobeiry	5
Ein Rimmeneh	9
Forn Chubbak	4
Haret Hreik	16
Lailaki	1
Borj l Barajneh	11
Mreijeh	7
Tahwetet Ghadir	3
Baabda	10
Hazmieh	9
Mar Takla	1
Hadat	24
Jumhour	2
Kfarshima	6
Wadi Shahrour	1
Bsaba	2
Jumhour	1
Rweisat Salima	3
Hammana	1
Tarsheesh	1
Others	9
Aley	Cases
Amroussieh	1
Hay El Sillom	7
Khaldeh	2
El Oumara	8
Aramoun	10
Bshamoun	3
Bleibel	1
Houmal	1
Aley	2
Ein El Saydeh	1
Bmakine	1
Aitat	1
Bhamdoun	1
Shanayh	1
Majdelbaana	4
Soufar	1
Meshqeety	1
Azzouniye	2
Ein Dara	3
Others	2
Bint Jbeil	Cases
Bint Jbeil	1
Ainata	1
Aita El Shaab	2
Ramiah	1
Aita El Jabal	2
Shakra	1
Borj Qalawayh	1
Froun	1
Debel	2

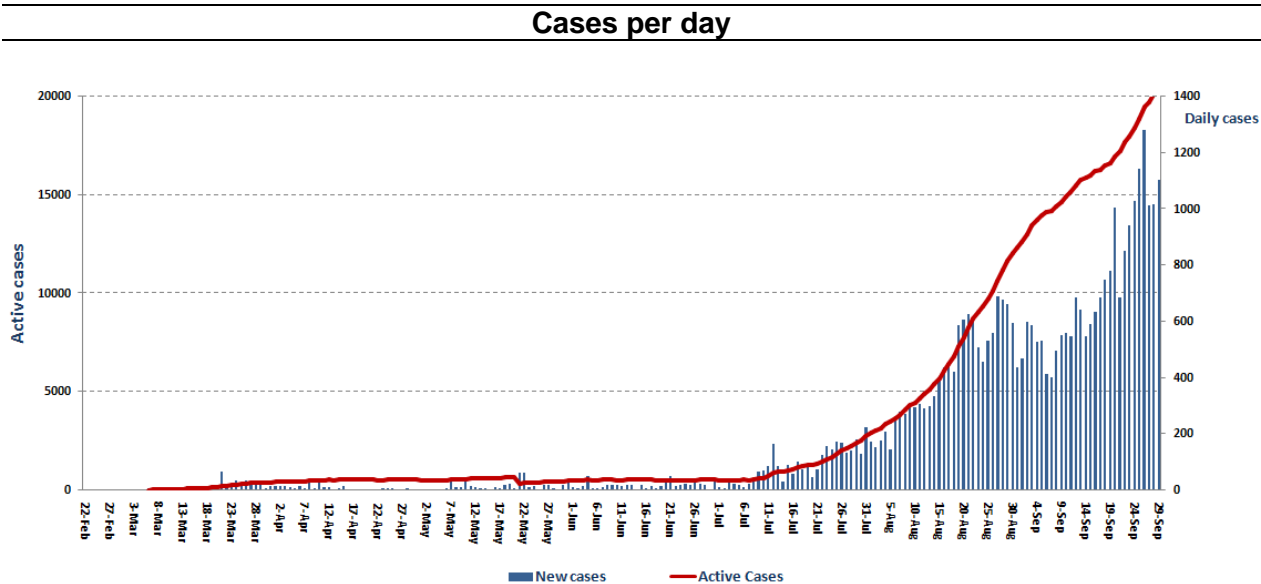
Saida	Cases
Saida El Kadeemeh	3
Hlalieh	4
Qaya'aa	1
Haret Saida	7
Miyye w Miyye	8
Ein El Helwe	6
Majdlyoun	3
Aabra	6
Bqosta	4
Ein el Delb	1
Ghazieh	1
Darb El Seem	1
Khrayeb	2
Zrariah	1
Bablieh	1
Qaaqaiyet Snoubar	1
Bisariyyeh	1
Mazraet El Msayleh	1
Anqoun	1
Saida	29
Others	14
Batroun	Cases
Batroun	3
Hamat	5
Ras El Shaqaa	2
Others	4

Tripoli	Cases
Zaytoun	1
Qebbeh	2
Zahrieh	1
Mina	8
Tripoli	24
Beddawi	3
Madineh Jadideh	1
Others	2
Koura	Cases
Kfar Saroun	1
Bzeeza	1
Bsarma	1
Bahbouch	1
Kosba	2
Barsa	3
Others	6
Western Bekaa	Cases
Ghazzah	1
Marj	1
Others	2
Jezzine	Cases
Jezzine	1
Kfarjarra	1
Aramta	1
Rayhan	1
Others	1

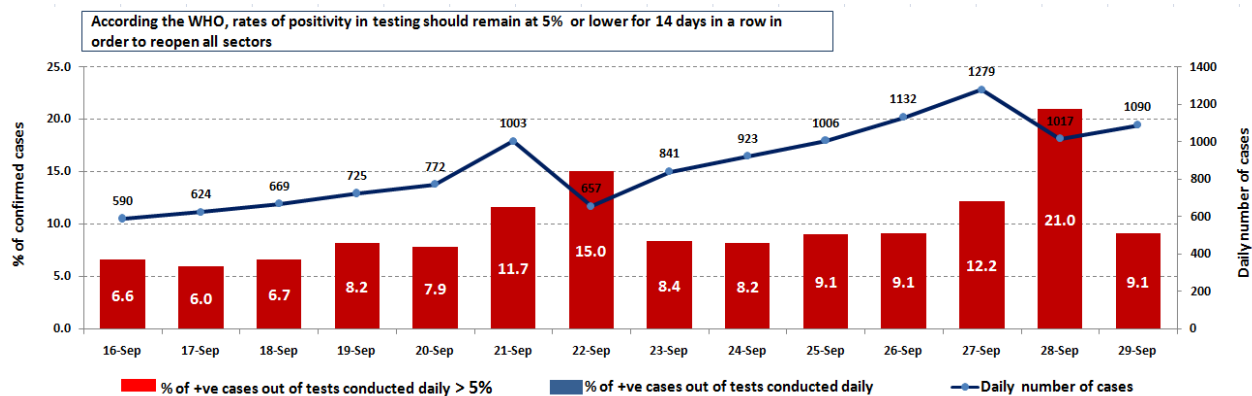
Baalbak	Cases
Baalbak	1
Doures	2
Nahle	1
Jdeidet El Fekha	1
Jabboule	1
Deir El Ahmar	1
Qasrnabba	1
Temnen El Tahta	1
Shmestar	1
Tarayya	1
Nabe Sheeth	1
Others	5
Tyre	Cases
Jal Bahr Shamali	1
Deir Qanoun Ein	1
Mahroune	3
Bazourieh	1
Others	14
Rashayya	Cases
Rashayya fawka	1
Others	1
Bcharre	Cases
Bcharre	1

Zahle	Cases
Maallaqa	1
Forzol	1
Hazzarta	2
Qaa El Reem	1
Ksara	4
Chtoura	2
Jlala	1
Makseh	1
Taalabaya	5
Taanayel	1
Qab elias	2
Bas Elias	9
Anjar	4
Riyaq	2
Ali Nahri	2
Terbol	1
Kfarzabad	1
Others	2
Hermel	Cases
Others	2

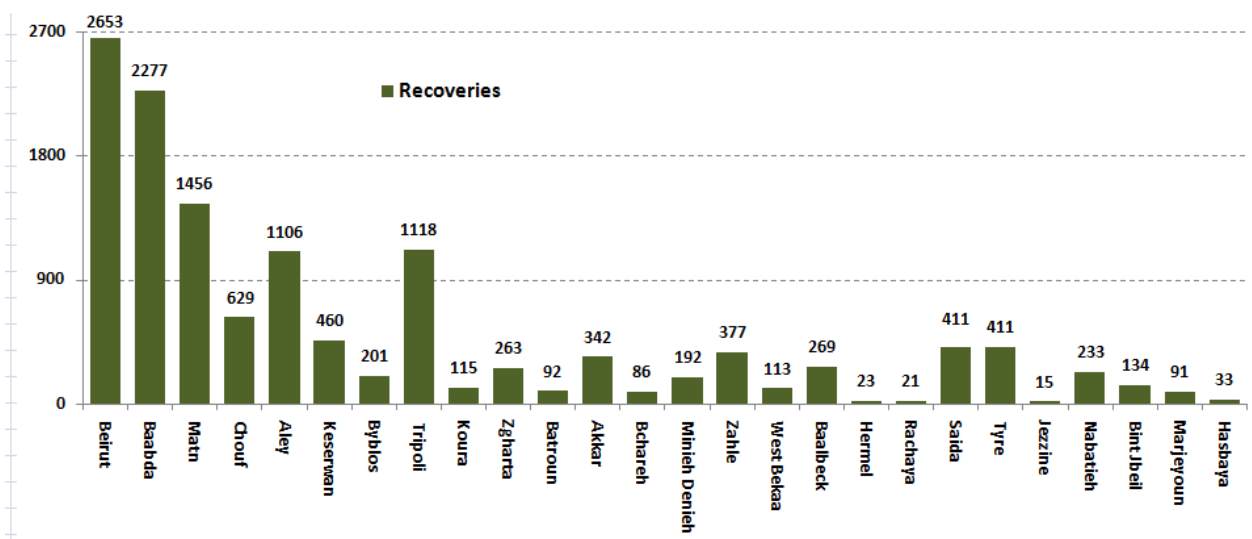
Others	195
--------	-----



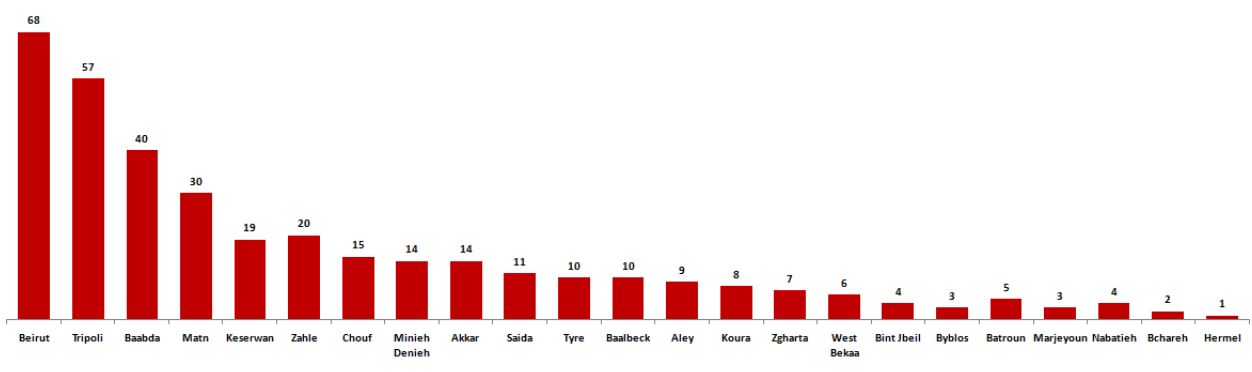
The percentage of positive cases out of the number of daily checks (16 September to 29 September 2020)



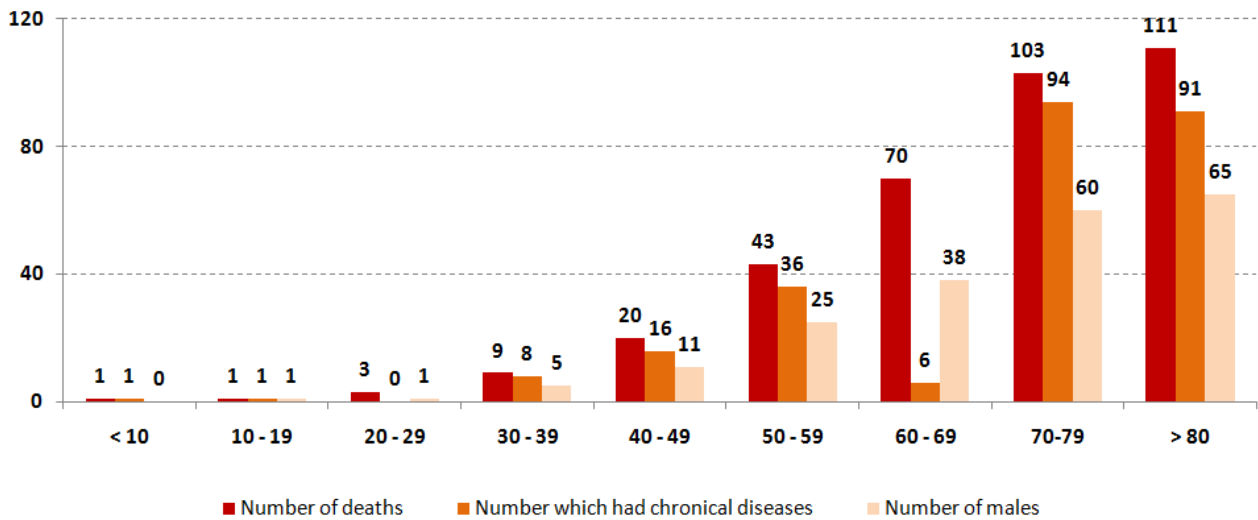
Recoveries



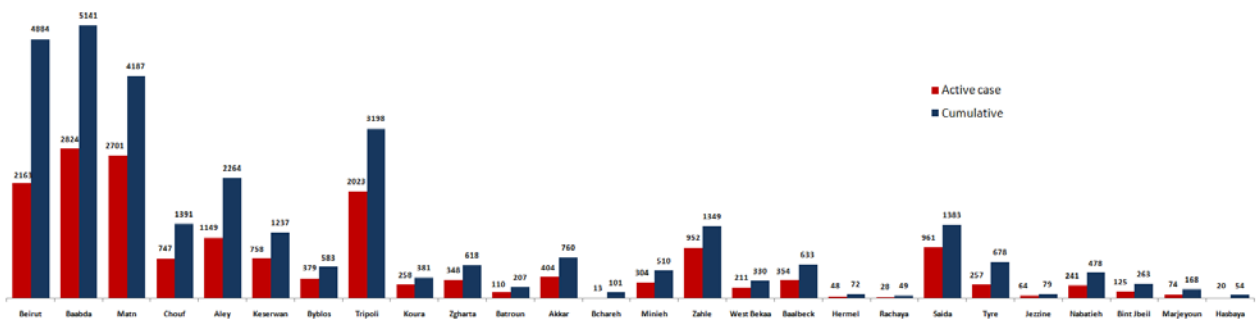
Distribution of deaths by Governorates



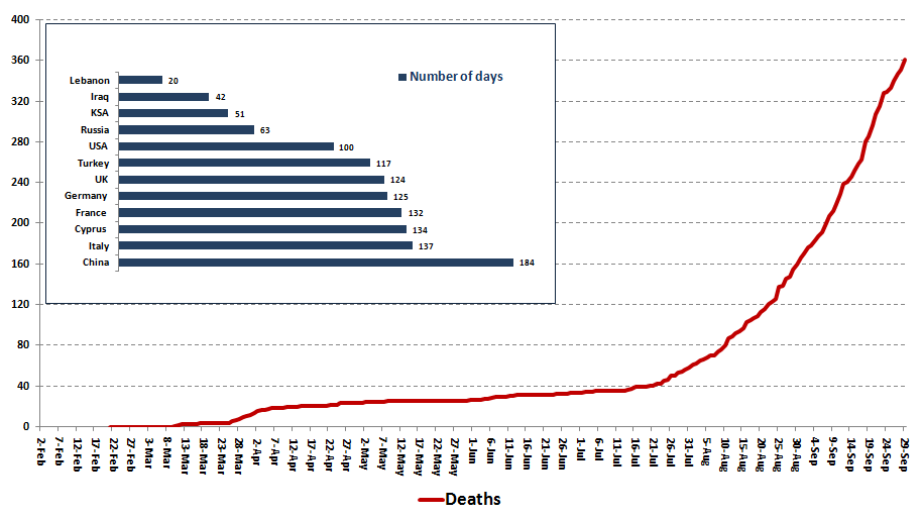
Distribution of deaths by Age



Distribution of Active Cases by Districts



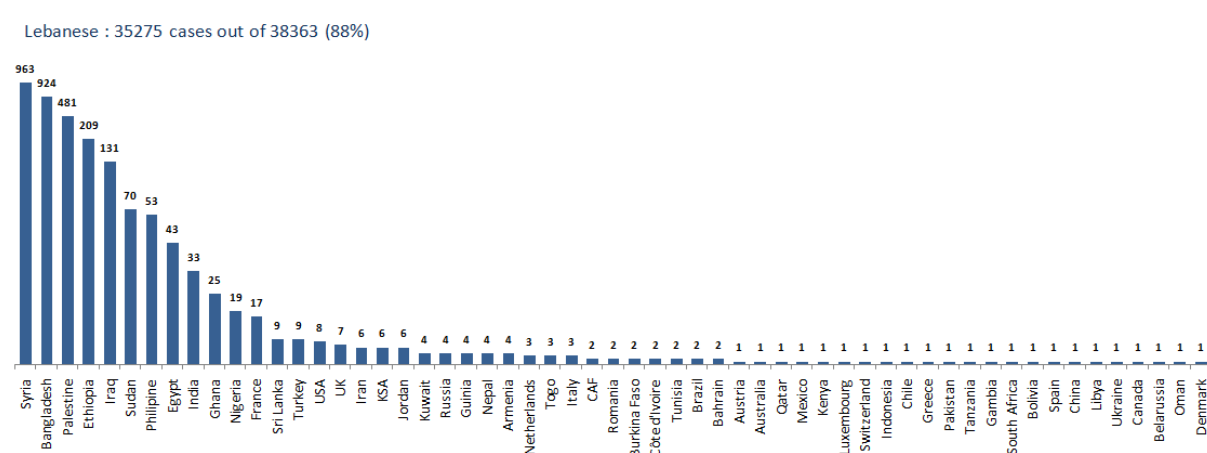
Comparison of the rate of doubling of the number of deaths in Lebanon with other countries (death doubling rate)



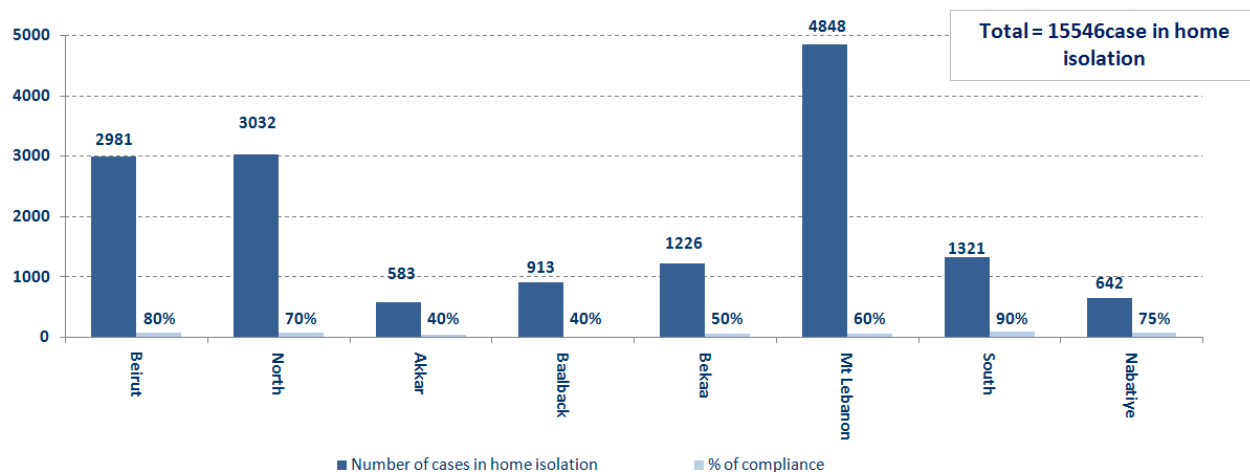
The distribution of the recorded deaths during the past 24 hours

Hospital	Residence	Gender	Age	Chronic
Harire Gov.	Beirut	Female	70	Yes
Saydet Zharta	Tripoli	Male	50	Yes
Herawi Gov.	Zahle	Male	41	No
Herawi Gov.	Zahle	Male	61	Yes
Saint George	Aley	Male	90	Yes
Saint George	Nabatiye	Male	89	Yes
Saydet Lebnan	Keserwan	Male	83	
AUBMC	Beirut	Female	89	Yes
Baalback Gov.	West Bekaa	Male	68	Yes
Dar El Amal	Zahle	Female	74	Yes

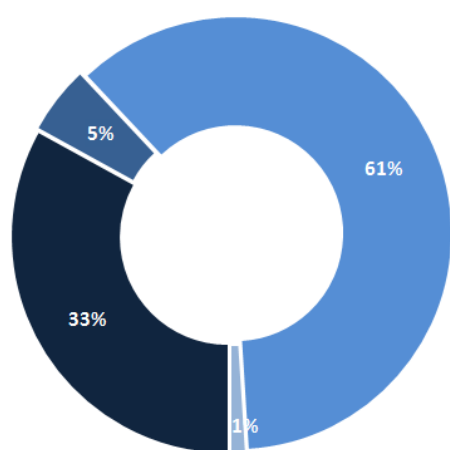
Distribution of cases by nationality



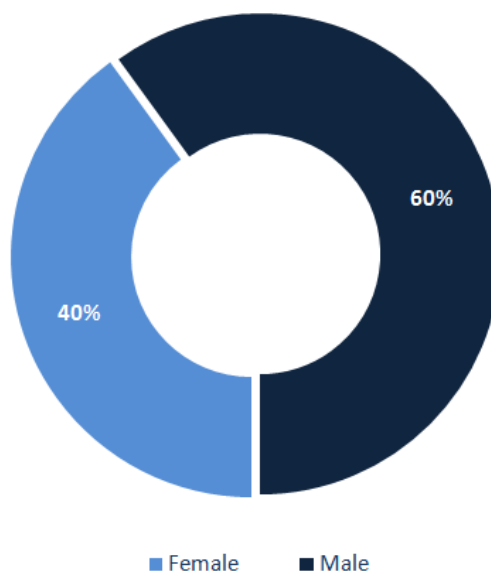
Number of individuals in home isolation and percentage of commitment to isolation



Exposure

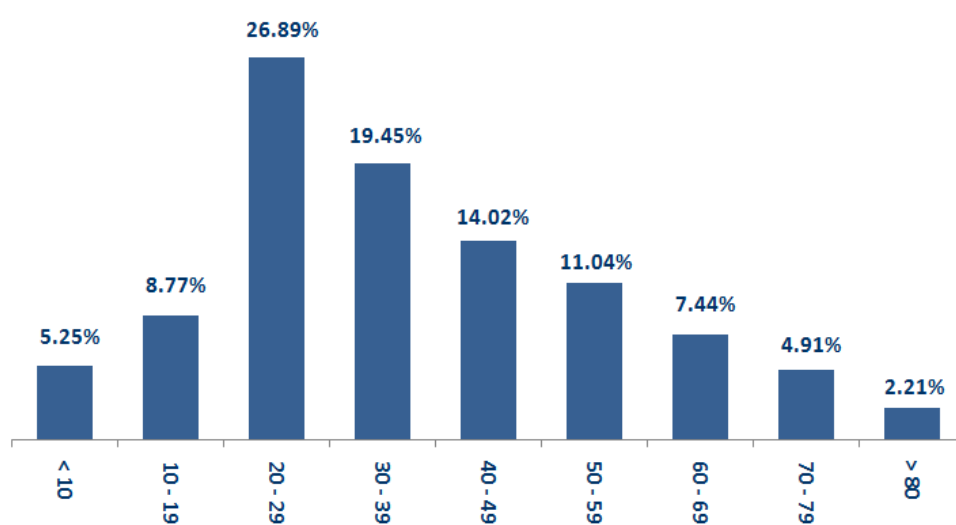


Distribution according to gender

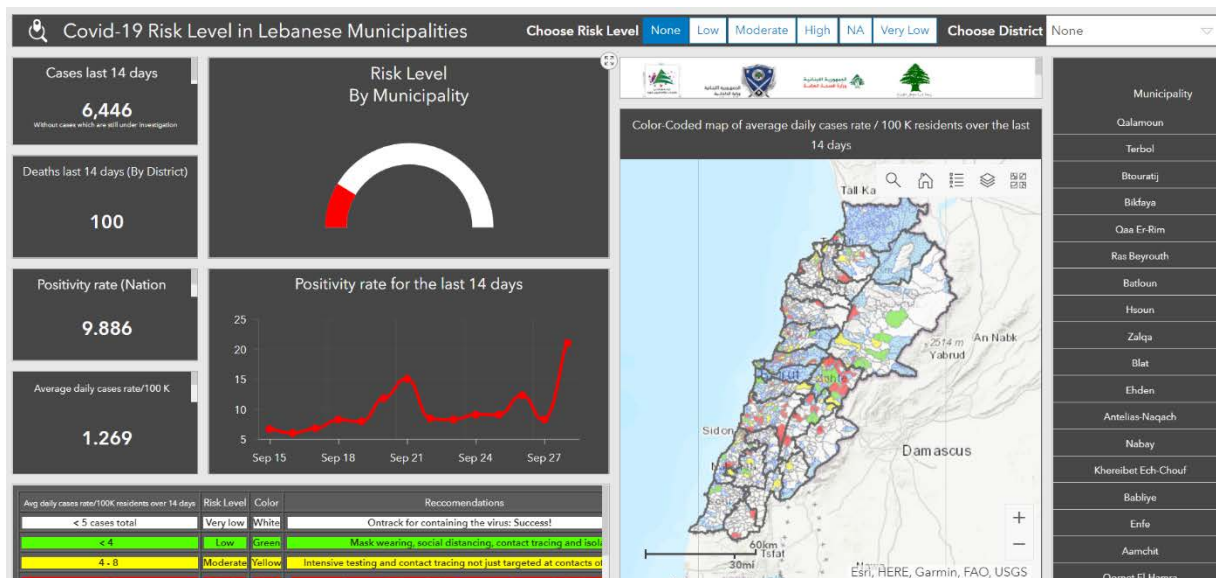


■ Contact with confirmed case ■ Travel related ■ Under investigation ■ Unidentified source

Distribution by age

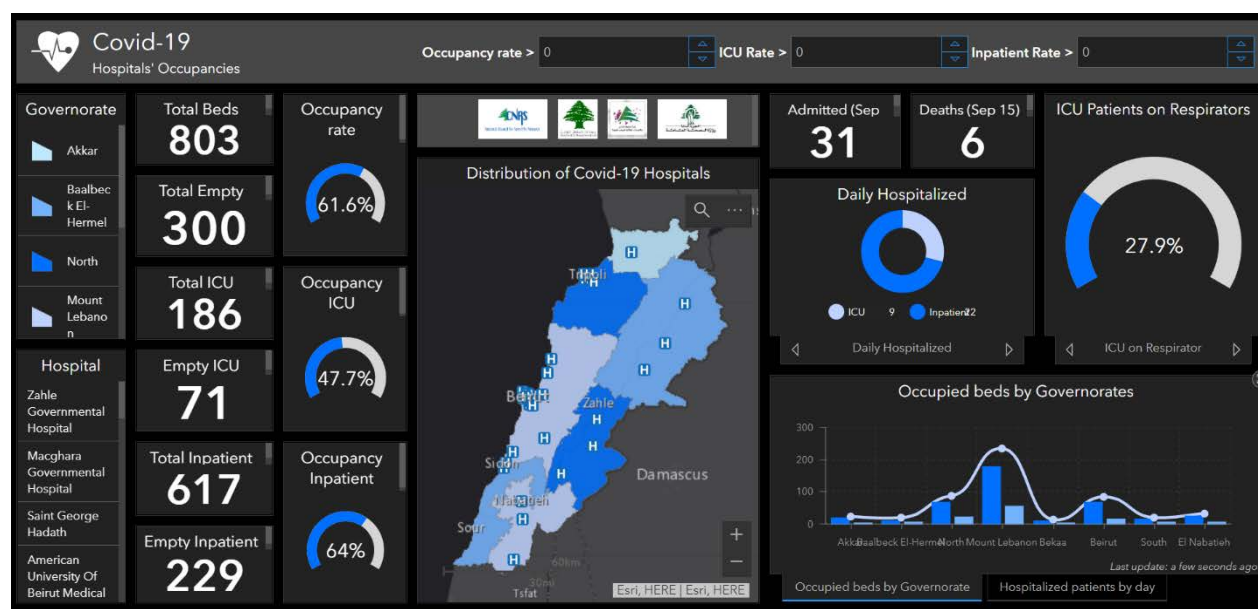


The online platform to measure the level of risk of the spread of the new Corona virus by district



This interactive platform allows you to know the level of risk of spreading the kurna virus by district based on the number of cases registered daily and the number of residents in each district. For more information on a daily basis, you can access the following link: <http://bit.ly/risklevelInMunicipalities>

The number of beds available for those infected with Coronavirus and the occupancy rate



For daily information on all the details of the bed distribution available for Covid-19 patients in the various governorates according to the hospitals

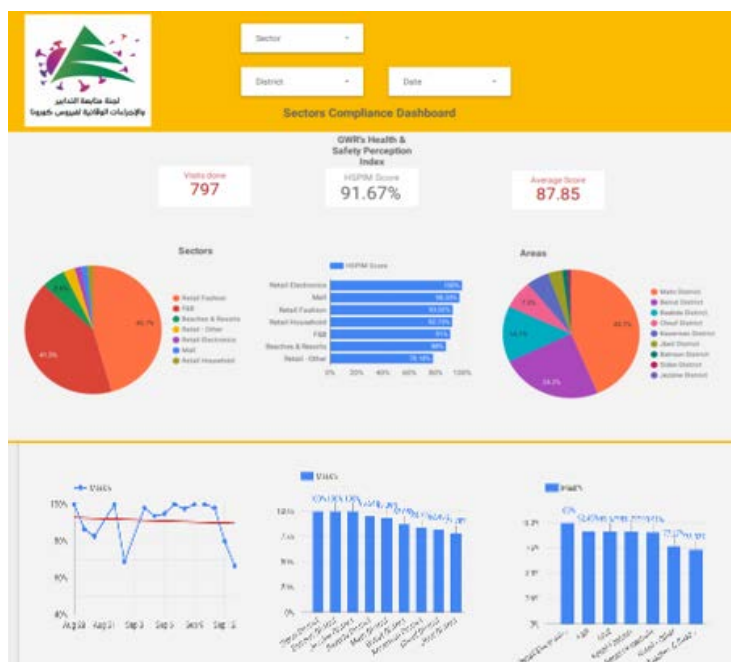
- Computer: <https://gisleb.cnrs.edu.lb/portal/apps/opsdashboard/index.html#/34b32db8030d4f229fc5db9ab686cca9>
- Mobile: <https://shorturl.at/cnqJ2>

Online platform to track sector commitment in general mobilization procedures

Based on the recommendation issued by the National Committee for Follow-up of Preventive Measures and Measures to Confront the Coronavirus to open all sectors, provided that the general mobilization procedure (safe distance, muzzle, and hand sterilization) be applied, a special electronic platform was created that allows monitoring and measuring the percentage of commitment by various sectors on an ongoing basis.

The detailed results can be viewed directly at the following link:

<http://bit.ly/covidsectordata>



Decisions and actions taken – 29/09/2020

Ministry of Public Health

The Ministry of Public Health is working to activate coordination and cooperation with Doctors Without Borders to increase the number of intensive care beds in Bar Elias Governmental Hospital, which is run by the organization and which is currently operating at full capacity, in addition to studying the possibility of helping the organization to equip a hospital designated to receive Corona cases in the North Governorate, And increasing the number of medical teams to conduct PCR examinations in various Lebanese regions.

The Ministry of Public Health issued the results of additional examinations for arrivals through Rafic Hariri International Airport on September 27, 2020, where three new cases were recorded, distributed over the following flights:

Arriving from	Company	Flight Number	Number of Positive Cases
27/9/2020			
Baghdad	MEA	323	1
Baghdad	Iraqi Airways	131	2
			3

Lebanese Red Cross

233,758	Number of PCR tests transferred to laboratories	46,262 (89 New)	Number of additional ambulance centers ready to respond	48	ambulance centers	5,059 (54 New)	cases transferred to hospitals
166	Number of volunteers trained to transfer PCR tests	1,498	Number of trained paramedics	8,702 (5 New)	total number of respondents	78,936 (54 New)	number of those benefiting from awareness *sessions
967	The number of university volunteers trained to follow up on prevention measures in companies and institutions	291	Number of university volunteers trained to conduct awareness sessions	550	total LRC volunteers for covid19	8,539 (2 New)	number of trained managers for isolation centers
4,232 (7 New)	Number of beneficiaries from educational electronic platforms COVID-19	91,083 (462 New)	Number of distributed equipment	1,240,401	total distriibuted posters, brochures, and flyers on covid19 prevention	558 (4 New)	number of rpisons that have been disinfected

General Directorate of State Security

- Reporting the closure of the South Lebanon Water Authority in Saray Bint Jbeil until September 28, 2020, after it was proven that the employees were injured to conduct checks for all employees and sterilize the center.
- Notification of the decision of the Mount Lebanon Governor to completely isolate the town of Aramoun in the Aley district, due to the increase in the number of injured in it.
- Reporting a violation committed by one of the students who went to the examination center in the Nabatiyeh region, despite her knowledge of the positive results of her examination, and the concerned authorities asked her to adhere to home quarantine, and it was also reported that the examination department would file a complaint against her with the Public Prosecution.
- Notification of the percentage of compliance with the general mobilization decision in the governorates, which came as follows within the past 24 hours:

Beirut	South	North	Akkar	Begaa	Nabateih	Baalbek Hermel	Mount Leb
50%	55%	60%	40%	N/A	45%	5%	30%

General Directorate of Internal Security Forces

Supporting the municipalities in isolating neighborhoods and buildings in the following towns and outlets:

- Barqayel (Akkar)
- Aramoun (Aley)
- Lancaster Plaza, Lancaster Suites, Lancaster Hotel (Raouche)
- Radisson Blu Martinez (Ain Mreisse)
- Golden Tulip Serenada Hotel (Abdel Aziz Junction)
- Golden Tulip Midtown Hotel (Hamra)
- Grand Suites (Beirut)
- Cezar Suites (Beirut)
- Eden Bay

Drafting arrest reports against violators of the decisions of general mobilization

The number of seizure records during the past 24 hours					The total number of records that have been organized against violators of the general mobilization decisions since 03/08/2020	
Written records of violating institutions (absorptive capacity and preventive measures)				0		
Written records of persons violating the decision to wear a mask				0	Beirut	20,642
Written records of people violating the general mobilization decision (Aragil* and social distancing)				2	Mount Leb	18,813
Total				2	Begaa	8,059
					North	6,784
Beirut	Mount Leb	Begaa	North	South	South	6,868
0	0	2	0	0	Total	61,166

Ministry of Public Works and Transportation

Departing Flights		Arriving Flights	
Number of Flights	34	Number of Flights	31
Number of Departing Individuals	3,618	Number of Arrivals	2,451

Port	Entered			Left		
	Import	Direction	#	Export	Direction	#
Beirut	Cattles	Taraghun	1			
	Gasoline	Al Douk	1			
Tripoli	Containers	Italy	1	Containers	Turkey	1
			3			1

General announcements

The Ministry of Education and Higher Education issued Decision No. 440 / M / 2020 on September 25, 2020 regarding the postponement of the initiation of teaching in secondary schools and public and private schools based on the recommendations issued by the Committee for Follow-up of Preventive Measures and Measures to Confront the Coronavirus, as the date of 10/12/2020. A date for the start of teaching, provided that the registration of students in official schools and high schools continues until 10/10/2020, inclusive. According to the decision, the directors were also requested to organize the rotation for teachers and members of the educational and administrative staff.

In light of the increase in the percentage of positive cases in the examinations to more than 8%, which poses an imminent threat to public health and causes the spread of the epidemic in the educational sector, the Follow-up Committee on Preventive Measures and Procedures to Confront the Coronavirus in its meeting held today on 9/24/2020 recommended a postponement. The date of attendance education for students is for a period of 14 days, with the exception of official examinations in all its stages, provided that the departments raise the degree of commitment to the preventive measures and measures and develop a plan to identify the towns that have a high case rate and an escalating positive case rate, in order to take the necessary measures.

Note: The decisions can be found at www.drm.pcm.gov.lb

Examples of lack of adherence to safety measures

- Demand gatherings and demonstrations.
- Failure to comply with the preventive measures and procedures required in a number of stores and markets (putting on a muzzle or face mask, sterilizing hands, maintaining a safe distance).
- Non-compliance with the 50% occupancy rate in several restaurants and amusement game centers.
- Gatherings for social events.
- Failure of those in contact with confirmed cases to adhere to home isolation procedures until the results of the laboratory tests are issued.

If you feel any symptoms, call directly the hotline of the Ministry of Public Health: 1214 or 01/594459

A list of the laboratories accredited by the MoPH to conduct PCR tests

المختبرات الحكومية المؤهلة إجراء التشخيص المخبري لفيروس كورونا بطريقة الـ RT-PCR

الموقع	المختبر
بيروت	مستشفى رفيق الحريري الجامعي RHUH
حلبا	مستشفى حلبا الحكومي
طرابلس	مستشفى طرابلس الحكومي
البترون	مستشفى البترون الحكومي
كسروان	مستشفى فتوح كسروان الحكومي (البوار)
البيقطة	مستشفى نبيه بري الحكومي الجامعي
تبنين	مستشفى تبنين الحكومي
بنت جبيل	مستشفى بنت جبيل الحكومي
بعلبك	مستشفى بعلبك الحكومي
زحلة	مستشفى الرئيس الياز اليراي الحكومي

المختبرات الخاصة المؤهلة إجراء التشخيص المخبري لفيروس كورونا بطريقة الـ RT-PCR

الموقع	المختبر
بيروت	مستشفى الجامعة الأميركية AUBMC
بيروت	مستشفى أوتيل ديو الجامعي (HDF) Hotel-Dieu de France
بيروت	مختبرات رودولف ميرييو (الجامعة اليسوعية - المتحف) Laboratoire Rodolphe Mérieux (Université Saint-Joseph)
بيروت	مستشفى القديس جاورجيوس الجامعي Saint-George Hospital - UMC
بيروت	مستشفى المقاصد Makassed General Hospital
بيروت	مستشفى رزق الجامعي LAU Medical Center - Rizk Hospital
بيروت	مستشفى اللبناني الجعيتاوي الجامعي Hôpital Libanais Geitawi - CHU
بيروت	مستشفى الوردية Hôpital Notre-Dame du Rosaire
بيروت	مختبر مركز الأطباء Doctor 's Center
بيروت	مختبر فونتانا (الحمرا) Fontana Laboratories
بيروت	مختبر الأمن العام (العنلثة)
بيروت	مختبرات جبر وغرة Laboratoire Jabre-Ghorra
بيروت	مختبر السان مارك Saint Marc Medical & Diagnostic Center
الغبيري	المختبرات الحديثة Laboratoire Moderne (Modern Lab- Berjaoui)
الغبيري	مستشفى الساحل Sahel General Hospital (SGH)
الغبيري	مستشفى الزهراء الجامعي
برج الزراجنة	مستشفى الرسول الأعظم Al Zahraa Hospital - UMC
حارة حريك	مستشفى بهمن Al Rassoul Al Aazam Hospital Bahman Hospital
حارة حريك	مختبر ناتيونال دياغنوستك سرفيس كومباني National Diagnostic Services Company (NDSC)
المرجعة	مختبر الدكتور محمود عثمان - مركز التحاليل الطبية Medical Diagnostic Center
الجناح	مختبر أميركن دياغنوستك سنتر American Diagnostic Center (ADC)
بعنا	مستشفى جبل لبنان Mount Lebanon Hospital
بعنا	مستشفى السان جورج الحدث Hôpital Saint-George – Hadath
بعنا	مختبر الهادي Al Hadi Laboratory
بعنا	مختبر INOVIE-Liban

Hôpital du Sacré- Coeur	مستشفى قلب يسوع	الحازمية
Clinigene	مختبر كلينيجان	الحازمية
Hôpital Dr.Samir Serhal	مستشفى سرحال	المن
Transmedical for Life	مختبر ترانسميديكال فور ليف	المن
Haroun Hospital	مستشفى هارون	الزلفا
Bellevue Medical Center (BMC)	مستشفى بلغو	المنصورة
Hôpital Albert Haykal	مستشفى هيكال	الكورة
Centre Hospitalier du Nord (CHN)	مركز الشمال الإستشفائي	زغرتا
Mazloun Hospital	مستشفى المظلوم	طرابلس
Al Mounla Hospital	مستشفى المنلا	طرابلس
Nini Hospital	مستشفى النيني	طرابلس
LMSE - المعهد العالي للدكتوراه، الجامعة اللبنانية	مختبر ميكروبيولوجيا الصحة والبيئة	طرابلس
CHU - Notre-Dame des Secours	مستشفى سيدة المعونات الجامعي	جبل
Lab Akiki & Boulos	مختبر عقيقي وبولس	جبل
Centre Médical Wakim	مختبر ولكيم	حولية
Ain Wazein Hospital	مستشفى عين وزين	الشوف
Hammoud Hospital UMC	مستشفى حمود الجامعي	صيدا
Al Karim Medical Laboratory (KML)	مختبر الكريم	صيدا
Sheikh Ragheb Harb Hospital	مستشفى الشيخ راجب حرب	البيشة
Sabbah Diagnostic Center (SDC)	مختبر الصباح	البيشة
Jabal Amel Hospital	مستشفى جبل عامل	صور
Mashrek Diagnostic Center (MDC)	مختبر المشرق	صور
Dar Al Amal University Hospital	مستشفى دار الأمل الجامعي	بعلبك
Khoury General Hospital	مستشفى خوري	زحلة
Medical Care Center (MCC)	مختبر ميديكال كير سنتر	زحلة

مختبرات المستشفيات العسكرية

Hôpital Militaire Central	المستشفى العسكري المركزي في بيروت	بيروت
---------------------------	-----------------------------------	-------

المختبرات المؤهلة لأخذ عينات "المسحات الأنفية" بطريقة Drive- thru

Medical Diagnostic Treatment Center (MDTC)	مختبر ميديكال دياغنوستيك تريتمانت سنتر (الحمراء)	بيروت
MedLab SAL CIC ALS	مختبر ميد لاب (الحمراء - الجفجفون)	بيروت
Itani Medical Laboratories	مختبرات عيتاني (المزرعة)	بيروت
ABC Laboratories	مختبر أ ب سي	الأشرفية
Mouawad Medical Laboratory	مختبرات معوض الطبية	الشياح
Rihan Medical Center	مختبرات الشياح (د. فؤاد ربحان)	الشياح
Expert Lab	مختبر إكسبرت لاب	المنصورة
Life LAB	مختبر لايف لاب	بعلبك
Riyak Hospital	مستشفى الرياق	رياق