

## Lebanon National Operations Room Daily Report on COVID-19



**Thursday, October 29, 2020**

## Report #225

**Time Published: 9:30 PM**

## New in the report:

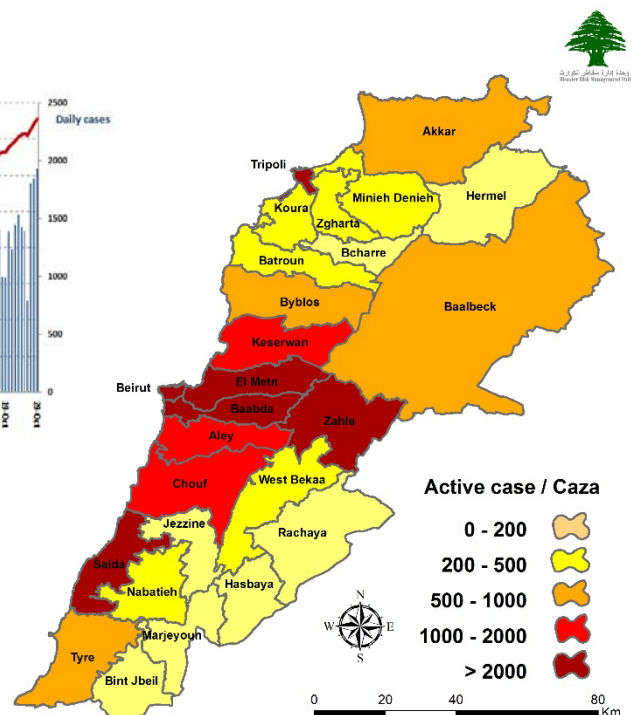
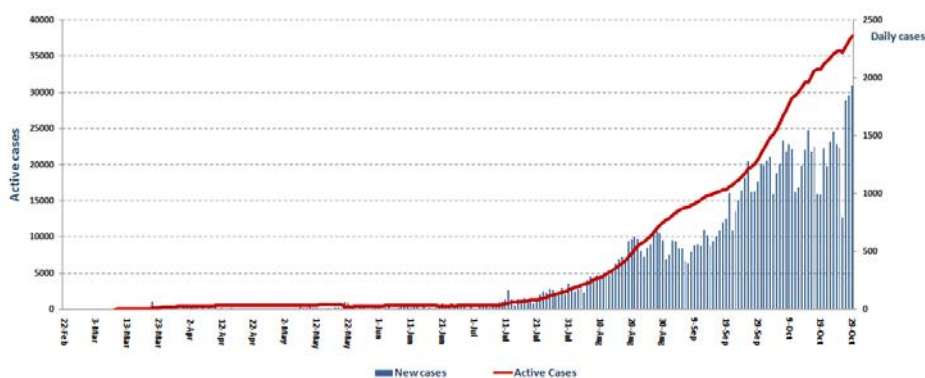
Names of laboratories that did not specify the judiciary, place of residence, or phone number for a number of positive cases, which affects tracking cases and identifying those in contact to conduct the necessary checks within the past 24 hours

<b>1,933</b> New Cases		<b>77,778</b> Total Cases since 21.2.2020		<b>610</b> Total Deaths		<b>39,123</b> Total Recovered	
<b>1,917</b> Residents	<b>16</b> Expats	<b>75,510</b> Residents	<b>2,268</b> Expats	<b>8</b> New Deaths		<b>1,236</b> New Recovered	
<b>127</b> Deleted Status due to its recurrence		<b>1,396</b> Total Cases in the Health Sector		<b>38,045</b> Total Active Cases		<b>753</b> Hospitalized Cases	
		<b>16</b> New Cases in the Health Sector		<b>37,292</b> Cases in Home Isolation		<b>248</b> Total Cases in ICU	
						<b>3</b> New Cases in ICU	
<b>1,147,322</b> COVID-19 Tests since 21.2.2020		Lebanon Status compared to the World					
		Total Cumulative		77,778		45,064,700	
<b>941</b> COVID-19 Tests at Airport within 24 hrs.				610		1,183,078	
<b>13,934</b> COVID-19 tests for residents within 24 hrs.				0,78%		2.62%	
				39,123		32,856,483	

Ref: Ministry of Public Health Data

### Number of Cases by Location

- **13,677 case is Under investigation**



Beirut	120
Ein Al Mreisseh	3
Ras Beirut	1
Rouche	3
Hamra	8
Snoubra	1
Mseitbeh	8
Mar Elias	5
Unesco	1
Sanayeh	2
Zarif	5
Mina Al Hosn	2
Mazraa	10
Borj Abi Haidar	6
Basta Fawka	1
Tariq Jdeedeh	16
Ras Al Nabaa	3
Basta Tahta	3
Al Khadr	1
Ashrafieh	13
Sioufy	1
Others	27
Baabda	279
Chiah	14
Jnah	16
Ouzai	8
Bir Hasan	2
Ghobeiry	8
Ein Al Rimmaneh	12
Forn El Shebbak	7
Haret Hreik	32
Lailaky	11
Borj Al Brajneeh	37
Mreijeh	6
Raml AL Aly	1
Tahweetet Ghadir	8
Baabda	3
Hazmieh	12
Fauadiehh	3
Hadat	44
Botchay	3
Loueizy	1
Jumhour	1
Kfarshima	10
Shahrour Al Olya	3
Baalshmay	1
Ras El Harf	1
Abadiehh	1
Dhour AL Abadiehh	1
Jumhour Araya	1
Al Knisseh	1
Hammana	3
Others	28
Batroun	10
Kfar Abida	1
Eddeh	1
Others	8

Chouf	71
Damour	5
Saadiyat	2
Naameh	3
Haret Al Naameh	3
Chhim	8
Mazboud	1
Dalhoun	1
Daraya	3
Anout	1
Barja	5
Jiyyeh	4
Jadra	1
Wady Al Zayne	1
Bkifa	1
Zaarourieh	1
Deir Al Qamar	2
Mgheiry	1
Ein Zhalta	1
Baaqline	1
Niha	3
Baadaran	1
Mrasty	1
Batloun	1
Others	20
Aley	123
Al Amrousieh	9
Hay El Sillom	20
Al Qebbeh	2
Khadeh	5
Al Oumara	19
Aramoun	8
Mouwenseh	1
Baawarta	1
Bshamoun	11
Bleibel	3
Houmal	1
Bdadoun	2
Aley	16
Ghaboun	1
Baisour	4
Qabr Shmoun	1
Bhamdon Mahatta	1
Bhamdoun Village	2
Majdelbaana	3
Soufar	1
Bedghan	1
Wady Bedghan	1
Btater	5
Eghmed	1
Azzounieh	1
Mesherfe	1
Others	2
Bcharre	1
Hasroun	1

Kesrwen	84
Sarba	2
Kaslik	4
Zouk Michael	8
Ghadir	3
Zouk Mosbeh	25
Adonis	3
Haret Sakher	4
Sahel Alma	4
Tabarja	2
Adma & Dafneh	1
Ajaltoun	3
Ballouneh	8
Sehaileh	2
Ein Al Rihaneh	1
Ghosta	2
Kfour	2
Harissa	2
Ashkout	1
Feitroun	1
Raashine	1
Faraya	1
Others	4
Byblos	49
Byblos	10
Mastita	2
Blat	4
Amshit	6
Halat	3
Fidar	1
Nahr Ibrahim	1
Meshmesh	1
Ein Al Delbeh	1
Adonis	1
Abeidat	1
Hboub	2
Others	16
Tripoli	73
Zaytoun	8
Bab AL Ramel	1
Al Tal	3
Al Qebbeh	14
Zahrieh	1
Mina 1	8
Bsatine Al Mina	1
Qalamoun	1
Beddawy	4
Madina Jadedah	6
Wady Nahle	1
Beddawy Camp	4
Others	21
Koura	8
Amyoun	1
Kfar Aqqa	1
Kefraya	1
Ras Masqa	2
Dahr Al Ein	2

Matn	266
Borj Hammoud	9
Nabaa	2
Sin El Fil	9
Horch Tabet	2
Jesr Al Basha	1
Jdeidet Al Metn	11
Bouchrieh	3
Dora	2
Rawda	4
Sed El Bouchrieh	5
Sabtieh	5
Deir Mar Roukoz	1
Dekwene	22
Mkalles	1
Antelias	7
Jal El Dib	11
Naqqash	8
New Naqqash	1
Zalqa	6
Byaqout	4
Bellview	3
Dbayyeh	9
Mansourieh	13
Fanar	11
Ein Saade	4
Roumieh	5
Bqannaya	1
Bsalim	3
Nabayh	2
Mteileb	2
Rabieh	2
Qornet Chehwan	1
Elissar	1
Rabwe	4
Beit Al Chaar	5
Deek Al Mahdy	4
Mazraet Yashouh	2
Zikrit	1
Bekfayya	5
Delb	1
Beit Shabab	1
Frikeh	1
Qornet El Hamra	2
Broummana	2
Jouret Al Ballout	1
Qanabt Bromana	2
Marshaaya	1
Baabdat	1
Beit Mery	3
Montiverde	3
Qaaqour	1
Bteghrine	1
Zeghrine	1
Kfar Aqab	1
Baskinta	2
Others	10

Zgharta	33
Zghorta	4
Rasheen	1
Kfar Hata	2
Erdeh	1
Haref	5
Bshama	1
Majdlayya	4
Haret Al Jdeedeh	1
Alma	2
Aqbeh	1
Kfar Hawra	1
Mezyara	5
Haref Mezyara	1
Meryata	1
Others	3
<b>Menyeh Dunniyyeh</b>	<b>47</b>
Deir Amar	3
Menyeh	9
Seer El Dunniyyeh	4
Bahsa	1
Bqaa Sefrine	1
Nemrein	10
Beit Al Faqs	5
Ein Al Teeneh	2
Sfeira	1
Qarsita	2
Harf Al Siyyad	2
Markabta	2
Bakh'oun	3
Others	2
<b>Western Beqaa</b>	<b>34</b>
Mashghara	3
Aana	1
Mansoura	3
Kamed AL Loz	2
Baaloul	1
Qaroun	4
Manara - Hammara	3
Hoch Al Harimeh	1
Jazeera	1
Sweiry	1
Suhmor	1
Marej	4
Yuhmor	1
Others	8
<b>Rashayya</b>	<b>9</b>
Rashayya Alwady	1
Rashayya Al Fawka	1
Aqbet Rashayya	1
Dahr AL Ahmar	1
Yanta	4
Others	1

Baalbek	95
Baalbek	25
Ras El Ein	1
Kamb Wafel	1
Doures	2
Iaat	2
Kfar Dan	1
Ras Baalbek Sahel	1
Fakha	2
Jdeidet Al Fekha	1
Al Ein	11
Hawarta	1
Arsal	7
Sha'et	1
Deir Al Ahmar	2
Bednayel	1
Beit shama	2
Temnine AL Tahta	2
Kfar Dabash	2
Aqeidieh	4
Chmestar	5
Taraya	2
Ser'een AL Tahta	2
Ser'een AL Fawka	1
Talya	1
Khader	5
Hor Taala	1
Bouday	2
Alaq Al Tal	1
Others	6
<b>Tyre</b>	<b>57</b>
Tyre	1
Manara	1
Al Bahr Al Shemaly	3
Rashidieh	3
Maashouq	1
Borj Al Shimaly	7
Batoulieh	1
Deir Qanoun Al Ein	3
Jouwaya	1
Yanouh	3
Qana	1
Saddiqeen	1
Chahbye Tei Zebna	1
Qanoun AL Nahr	1
Abbasieh	3
Shebriha	3
Qleileh	2
Bayada	1
Others	20
<b>Hasbayya</b>	<b>1</b>
Hasbayya	1

Zahle	85
Al Midan	1
Hoch Zaraaneh	1
Rassieh	2
Barbara	1
Maallaqa	4
Karak Nouh	2
Al Oumara Arady	2
Karmeh	1
Hoch AL Oumara	4
Arady	1
Mar Elias	3
Forzol	1
Ablah	2
Niha	2
Ksara	1
Wady Al Arayesh	1
Chtoura	6
Makseh	1
Taalabaya	1
Jdita	1
Saadnayel	3
Qab Elias	11
Bar Elias	1
Anjar	2
Majdel Anjar	2
Nassrieh	1
Riyak	8
Hoch Hala	1
Qousaya	1
R'eet	2
Haret AL Fikany	1
Terbol	3
Dalhamieh	1
Kfar Zabad	5
Others	5
<b>Saida</b>	<b>48</b>
Hlalieh	1
Haret Saida	1
Ein Al Helwe	1
Abra	8
Qrayyeh	1
Ghazieh	2
Ansarieh	3
Bablieh	2
Sarafand	4
Anqoun	1
Others	24
<b>Marjeyoun</b>	<b>9</b>
Marjeyoun	1
Khiyam	3
Adaysseh	1
Taybeh	2
Mais AL Jabal	2

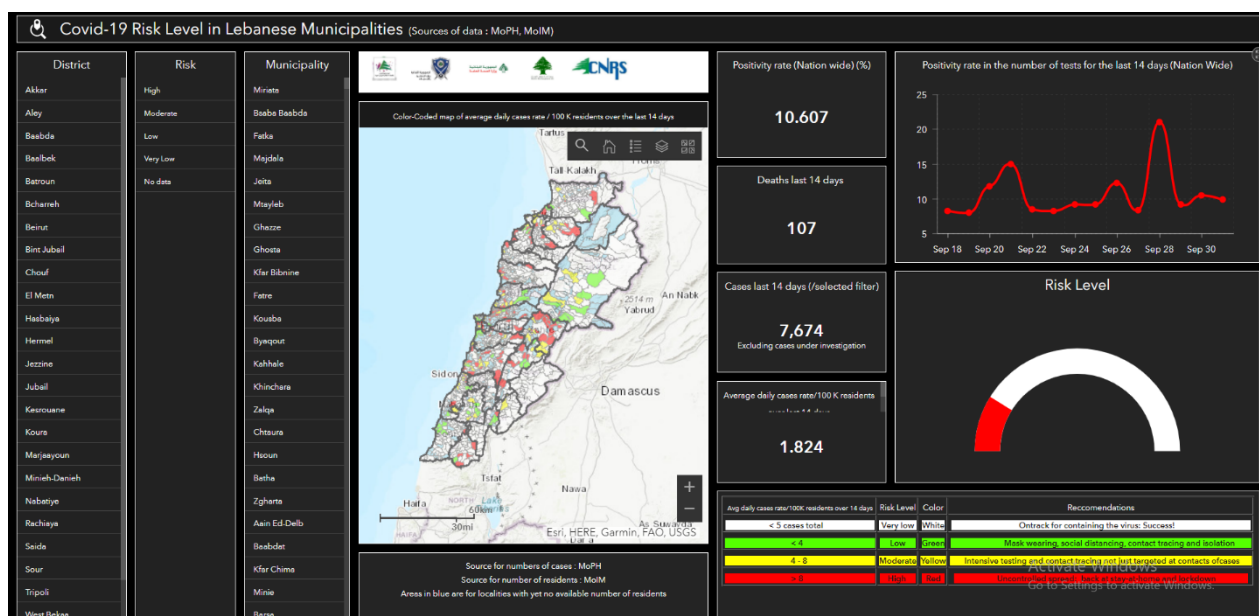
Akkar	87
Halba	3
Shiekh Mohamad	1
Dora	1
Menyara	2
Qantara	1
Mashha	3
Arqa	2
Bqarzla	1
Borj Al Arab	2
Zouk AL Hsseineh	1
Zouk AL Habalsa	1
Tekrite	2
Bezbina	2
Old Akkar	2
Tal Abbas	2
Koueikhat	3
Hochab	1
Qleiaat	3
Amara	1
Bebnine	4
Mhammara	1
Nahr AL Bared	2
Abdeh	4
Berqayel	4
Qab'eet	2
Habshite	1
Hrar	1
Meshmesh	2
Fneidek	4
Majdala	1
Rahbe	2
Wady AL Jamous	2
Beereh	1
Ein Al Zeit	1
Kherbet Shar	1
Doussa	1
Jdeidet Aidamun	1
Qobayyat	3
Andkit	1
Wady Khaled	1
Dbadib	1
Heishy	1
Akroum	2
Others	9
<b>Hermel</b>	<b>2</b>
Hermel	2
<b>Jezzine</b>	<b>13</b>
Jezzine	6
Bkassine	1
Kfarhouna	2
Kfar Jarra	2
Adhour	2

Nabatieh	23
Nabatieh Al fawka	1
Habbouch	4
Jarjouh	1
Deir AL Zahrany	1
Adshit Al Shqeef	1
Ansar	5
Eastern Zoutar	1
Yuhmor	1
Others	8

Bint Jbeil	14
Bint Jbeil	1
Maroun AL Ras	1
Rmeish	1
Ramieh	1
Tebnine	1
Safad Al Battikh	1
Kherbet Silim	2
Harees	1
Tairy	1
Yater	1
Debel	2
Beit Leef	1

Others	332
--------	-----

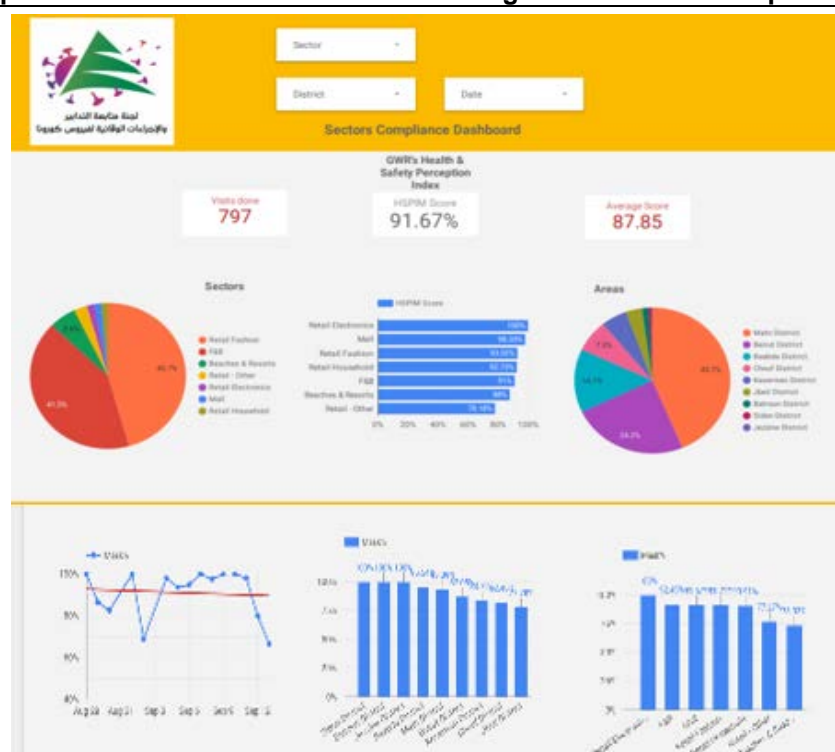
## The Online platform to measure the level of risk of the spread of the new Corona virus



This interactive platform allows you to know the level of risk of spreading the kurna virus according to districts, based on the number of cases registered daily and the number of residents in each district. For more information on a daily basis, you can access the following link:

<https://bit.ly/DRM-RiskLevelInMunicipalities>

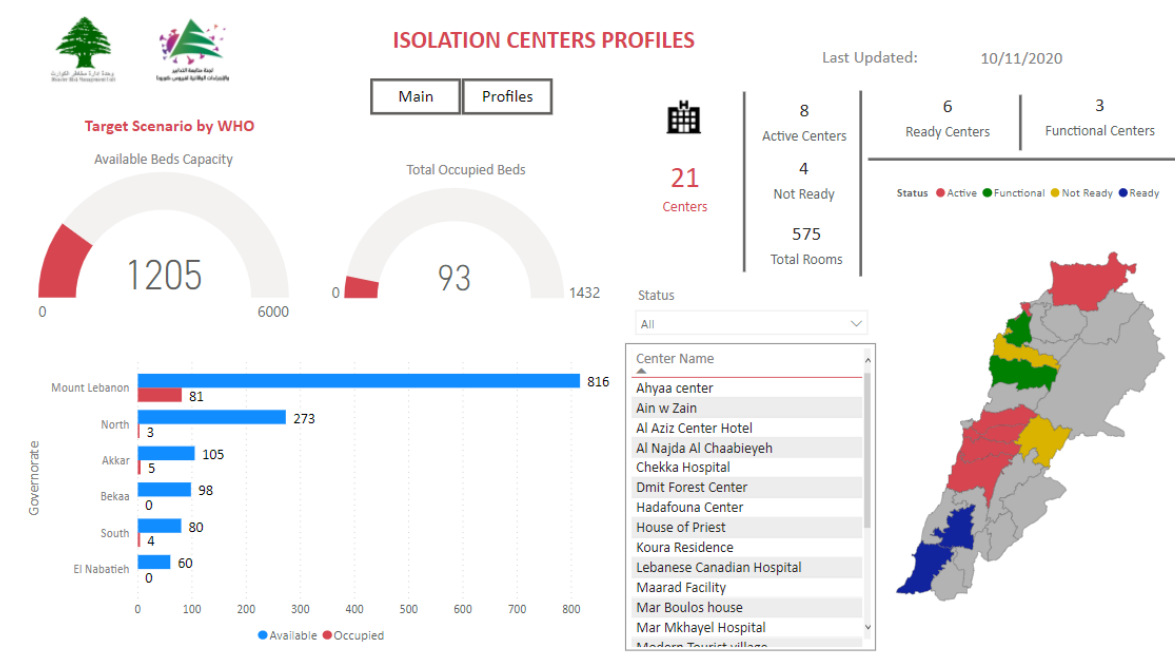
## Online platform to track sector commitment in general mobilization procedures



Based on the recommendation issued by the National Committee for Follow-up of Preventive Measures and Measures to Confront the Coronavirus to open all sectors, provided that the general mobilization procedure (safe distance, muzzle, and hand sterilization) be applied, a special electronic platform was created that allows monitoring and measuring the percentage of commitment by various sectors on an ongoing basis.

The detailed results can be viewed directly at the following link <http://bit.ly/covidsectordata>

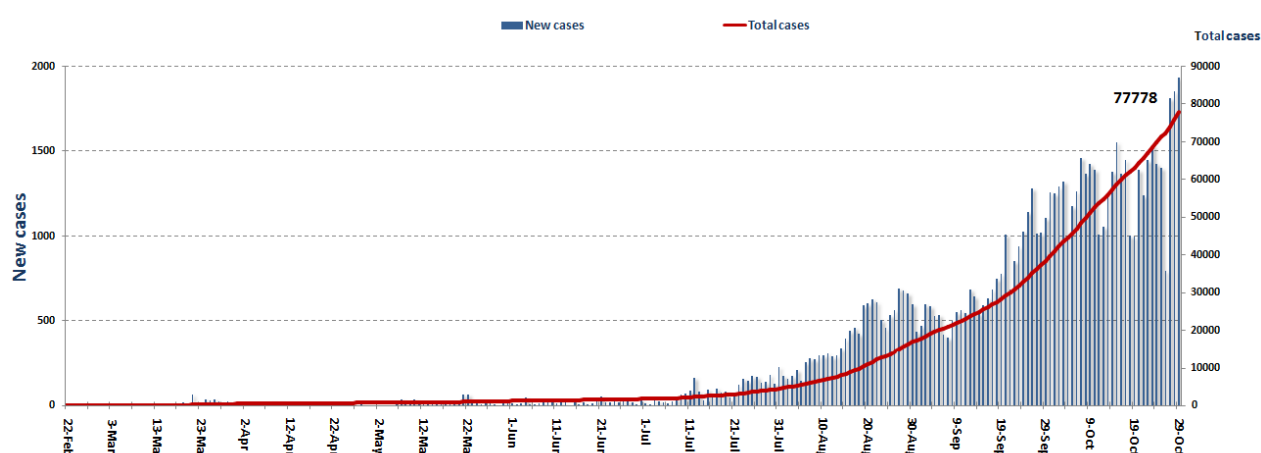
## Occupancy rate of isolation centers for cases infected with Coronavirus



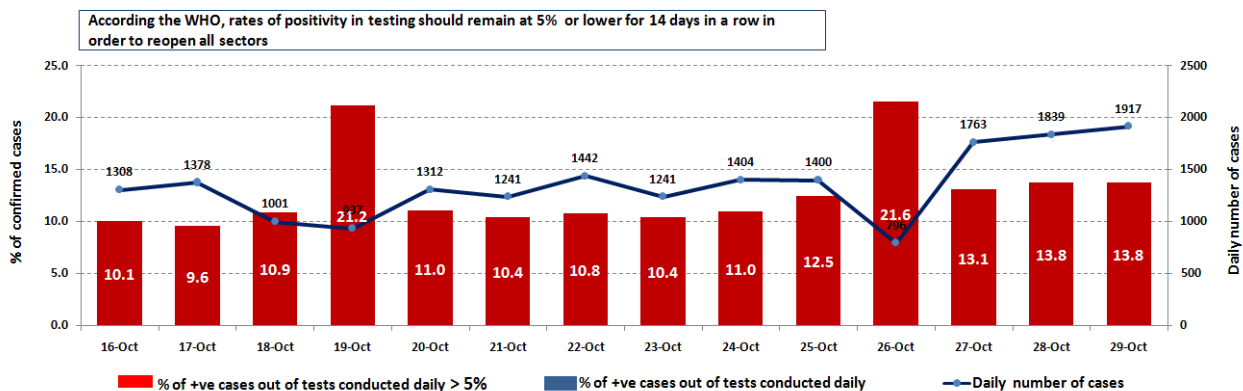
For more information about the isolation centers' distribution and the percentage of their occupancy, enter the following link: <http://bit.ly/DRM-IsolationCentersProfiles>

Note: These centers have been equipped in cooperation between the National Committee for Follow-up of Preventive Measures and Measures to Confront the Coronavirus and Governors and Municipalities, the United Nations Development Program, the World Health Organization, UNICEF, the Ministry of Public Health, the Syndicate of Nurses in Lebanon and the Syndicate of Specialists in Social Work.

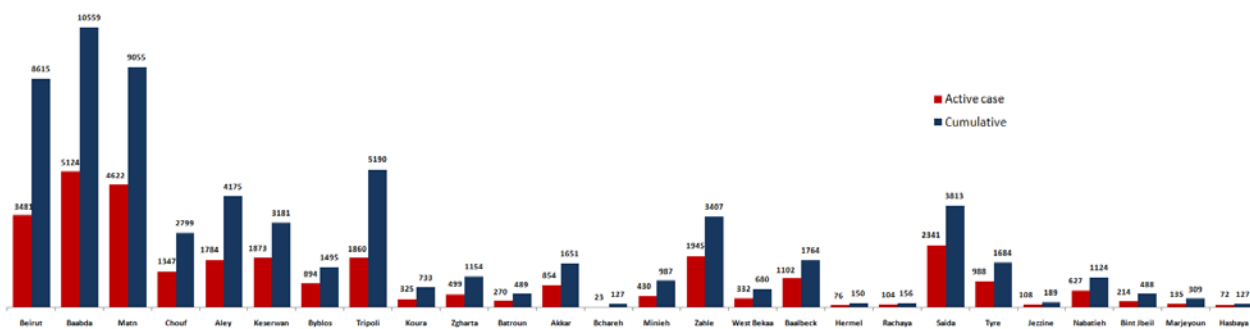
## Cases per day



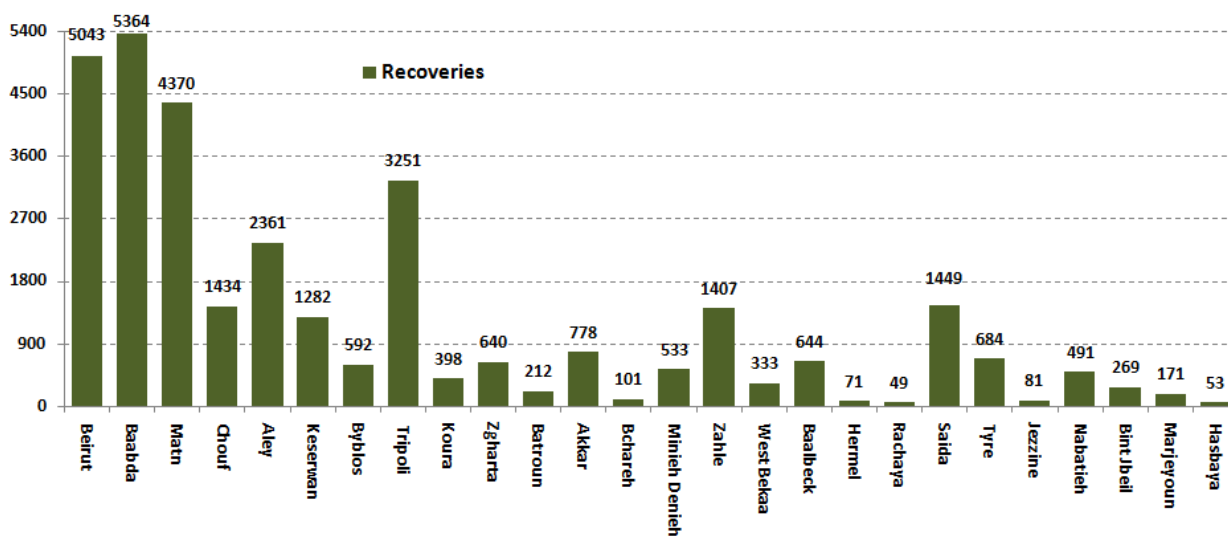
## The percentage of positive cases out of the number of daily checks (16-29 Oct 2020)



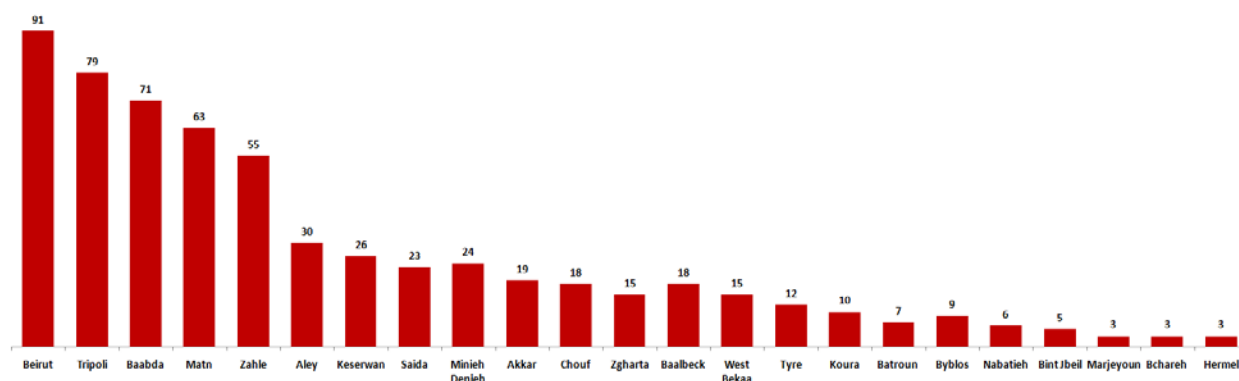
## Distribution of Active Cases by Districts



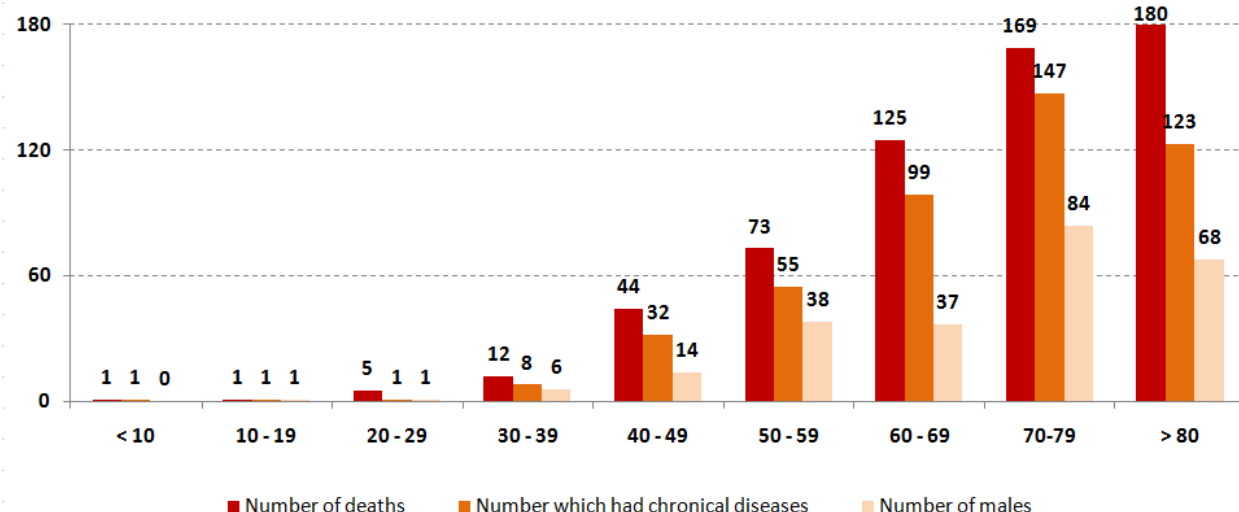
## Recoveries



### Distribution of deaths by Governorates



### Distribution of deaths by Age

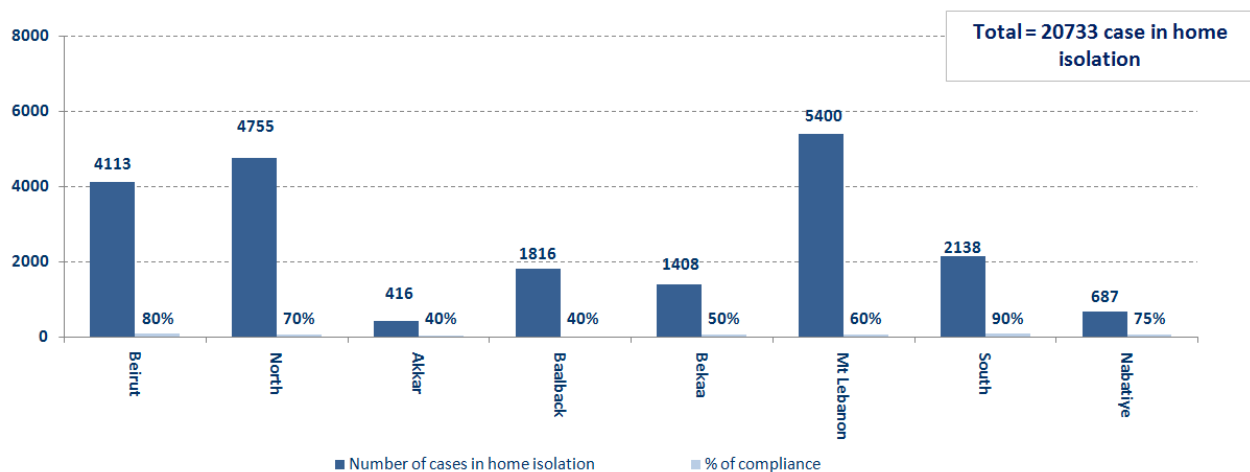


### The distribution of the recorded deaths during the past 24 hours

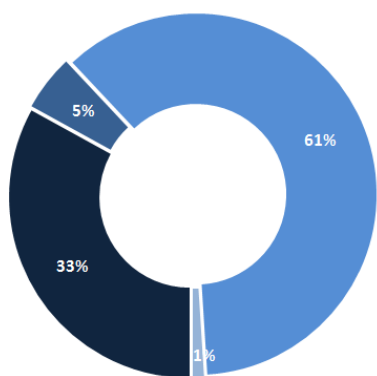
Hospital	Residence	Gender	Age	Chronic
Tripoli Gov Hospital	Tripoli	Male	63	Yes
Tripoli Gov Hospital	Mineh Daneih	Female	43	Yes
Hôpital Notre Dame des Secours	Jbeil	Male	47	Yes
Baabda Gov Hospital	Matn	Female	53	Yes
Sacred Heart Hospital	Baabda	Female	89	Yes
Hôpital Notre Dame des Secours	Matn	Male	47	Yes
AUBMC	Beirut	Female	52	Yes
Riyak Hospital	Baalbek	Male	45	No



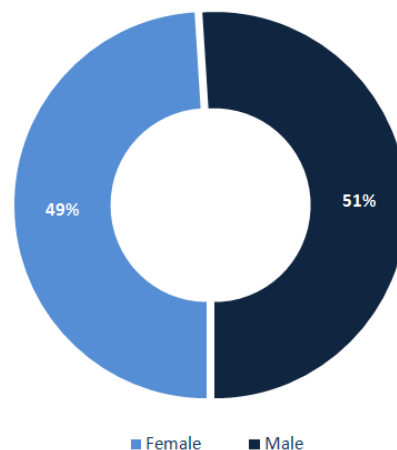
## Number of individuals in home isolation and percentage of commitment to isolation



## Exposure

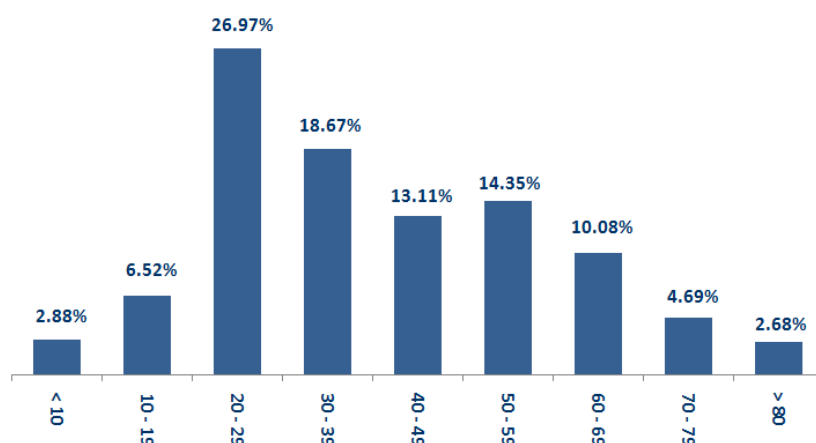


## Distribution according to gender



■ Contact with confirmed case ■ Travel related ■ Under investigation ■ Unidentified source

## Distribution by age



---

**Decisions and actions taken – 10/29/2020**

---



---

**Ministry of Public Health**

---

- The Ministry of Public Health called in the meeting of the scientific committee to close neighborhoods in some major cities, including the capital Beirut, in order to prevent the outbreak of the Corona virus.
- The Ministry of Public Health confirmed that no vaccine will be imported from any country before it is officially approved by the World Health Organization

Arriving from	Company	Flight Number	Number of Positive Cases
N/A			
<b>Total</b>			<b>0</b>

---

**Lebanese Red Cross**

---

235,498	Number of PCR tests transferred to laboratories	53,000	Number of additional ambulance centers ready to respond	48	ambulance centers	7,127	cases transferred to hospitals
166	Number of volunteers trained to transfer PCR tests	1,498	Number of trained paramedics	8,804 (14 New)	total number of respondents	95,274 (1,363 New)	number of those benefiting from awareness *sessions
967	The number of university volunteers trained to follow up on prevention measures in companies and institutions	291	Number of university volunteers trained to conduct awareness sessions	550	total LRC volunteers for covid19	8,701	number of trained managers for isolation centers
4,388 (29 New)	Number of beneficiaries from educational electronic platforms COVID-19	261,535 (131 New)	Number of distributed equipment	1,249,835	total distributed posters, brochures, and flyers on covid19 prevention	728	number of prisons that have been disinfected

## General Directorate of Internal Security Forces

The number of seizure records during the past 24 hours					The total number of records since 03/08/2020	
Written records of violating institutions (absorptive capacity and preventive measures)				0		
Written records of persons violating the decision to wear a mask				0	Beirut	21,696
Written records of people violating the general mobilization decision (Aragil* and social distancing)				374	Mount Leb	21,396
<b>Total</b>				<b>374</b>	Beqaa	9,027
					North	7,604
Beirut	Mount Leb	Beqaa	North	South	South	8,124
69	219	43	8	35	<b>Total</b>	<b>67,890</b>

## General Directorate of State Security

The report of the closure of the Civil Planning Office in Sarai Jbeil due to the infection of a staff member with the Coronavirus. - Reporting that the number of people infected with Coronavirus in the State Security Agency has reached 69. Notification of the percentage of compliance with the general mobilization decision in the governorates, which came as follows within the past 24 hours:

Beirut	South	North	Akkar	Beqaa	Nabateih	Baalbek Hermel	Mount Leb
50%	52%	80%	50%	61%	85%	15%	30%

## General Directorate of General Security

- 11 members of the security forces were reported infected with the Coronavirus.
- Reporting the commitment of the municipalities to the decision of the Minister of Interior and Municipalities:

Municipalities that abided by the decision	Municipalities didn't abide by the decision
Hermel, Haris, Ain Kafr Zabad, Taalabaya, Ablah, Jdita, Barej, Al Nabi Sheet, Tamnin Al Fawqa, Tamnin Al Tahta, Kfardan, Deir Al Ahmar	Al-Manara, Al-Rawda, Al-Suwairi, Al-Qobayat, Baakline, Ain Zahla, Al-Barouk, Al-Warhaniya, Kafr Nabrakh, Bednayel, Kfar Kila, Qulaia

- Follow up the implementation of the required security and preventive measures at the airport, ports and border crossings.
- Reporting cases registered in the various districts and cases in home quarantine.

---

**Ministry of Public Works and Transportation**

---

Departing Flights		Arriving Flights	
Number of Flights	31	Number of Flights	32
Number of Departing Individuals	4,107	Number of Arrivals	3,139

Port	Entered			Left		
	Import	Direction	#	Export	Direction	#
Beirut				Blank	Tripoli	1
				Containers	Mersin	1
Total	0			2		

---

**General announcements**

---

- Mount Lebanon governorate issued 4 decisions related to limiting the spread of the Coronavirus in several towns and villages as follows:

- The first decision: the southern region of Al-Kharroub (Za'aruriya, Al-Mutla, Baba, John, Hasrout, Mazraat Al-Dahr)
  - Cancellation of all social events, cafes, expresses, closed gathering places for children, clubs, GYM halls, and public parks are closed without exception.
  - Determining the working hours of food and non-food commercial establishments, with the exception of bakeries and institutions related to the health sector (hospitals, pharmacies, dispensaries ...) and warehouses for the distribution of fuel and gas.
  - Restaurants must also adhere to the 50% rate of operation, and that health conditions, prevention and public safety measures are to be observed.
  - Mandating municipalities to strictly apply public safety measures and preventive measures.
  - Assigning the Internal Security Forces to coordinate with the Municipal Police and the Southern Kharroub District Police to implement the content of this decision and to organize a report according to the rules
- The second decision: isolating the town of Ammour, located in the Chouf district.
  - Close the town completely for a week, and cancel all social events, parties, parties, and gatherings of all kinds.
  - Excluded exclusively from the closure decision and institutions related to the health sector (hospitals, pharmacies, dispensaries ...), furnaces and fuel and gas distribution depots, as well as limiting working hours for foodstuff stores of all kinds, provided that health conditions and preventive and public safety measures are adhered to.
  - Assigning the municipality of Amatour to strictly apply preventive measures.
  - Assigning the internal security forces to coordinate with the Amatour municipality to implement the content of this decision and to organize a report according to the rules.

- The third decision: isolating the town of Naameh - Haret Al-Naameh, located in the Chouf district.
  - Close the town completely for a week, and cancel all social events, parties, parties, and gatherings of all kinds.
  - Excluded exclusively from the closure decision and institutions related to the health sector (hospitals, pharmacies, dispensaries ...), furnaces and fuel and gas distribution depots, as well as limiting working hours for foodstuff stores of all kinds, provided that health conditions and preventive and public safety measures are adhered to.
  - Assigning the municipality to strictly apply preventive measures.
  - Assigning the Internal Security Forces to coordinate with the municipality of Al-Na'a - Haret Al-Naameh to implement the content of this decision and organize a report in accordance with the rules
- Fourth decision: Northern El Kharroub region - Chouf district.
  - Cancellation of all social events, cafes, expresses, closed gathering places for children, clubs, GYM halls and public parks without exception.
  - Determine the working hours of food and non-food commercial establishments, with the exception of bakeries and institutions related to the health sector (hospitals, pharmacies, dispensaries ...) and fuel and gas distribution depots. Restaurants must also adhere to the 50% rate of operation, and that health conditions and preventive and public safety measures are adhered to.
  - Mandating municipalities to strictly apply public safety measures and preventive measures.
  - Assigning the Internal Security Forces to coordinate with the Municipal Police and the Northern Kharroub District Police to implement the content of this decision and to organize a report in accordance with the rules.

**Note: The decisions can be found at [www.drm.pcm.gov.lb](http://www.drm.pcm.gov.lb)**

---

### Examples of lack of adherence to safety measures

---

Failure of some municipalities to abide by the Ministry of Interior and Municipalities Decision No. 1025/2020 related to the closure of towns that have a high risk of the spread of the epidemic.

- Demand gatherings and demonstrations.
- Failure to comply with the preventive measures and procedures required in several stores and markets (putting on a muzzle or face mask, sterilizing hands, maintaining a safe distance).
- Non-compliance with the 50% occupancy rate in several restaurants and amusement game centers.
- Gatherings for social events.
- Failure of those in contact with confirmed cases to adhere to home isolation procedures until the results of the laboratory tests are issued.

**If you feel any symptoms, call directly the hotline of the Ministry of Public Health: 1214 or 01/594459**

**Laboratories that did not comply with the procedures approved by the MoPH About the information required to be recorded for infected cases within the past 24 hours**

<b>Laboratories that did not specify the Governorate</b>	
<b>Laboratory/Hospitals</b>	<b>Cases</b>
Laboratoire Inovie / Fayyadie	190
Hadi Laboratory/ Haret Hreik	18
Hospital American university	17
Rafic Hariri University hospital	14
Beirut International Airport	5
Hospital Sacre Coeur	3
Mashrek Medical Diagnostic Center MDC	2
Hospital Mont liban	1
Hospital Ain wa Zain	1
Hospital Ragheb Harb	1
Hospital Tripoli Gouvernemental / Qoubah	1

<b>Number of positive cases without specifying the place of residence</b>	
<b>Laboratory/Hospitals</b>	<b>Cases</b>
Laboratoire Inovie / Fayyadie	190
Mashrek Medical Diagnostic Center MDC	32
Hospital American university	27
Hadi Laboratory/ Haret Hreik	25
Hospital Ain wa Zain	16
Rafic Hariri University hospital	14
Military Hospital / Adlieh	9
Hospital Ragheb Harb	7
Hospital Mont liban	6
Beirut International Airport	5
Hospital Nabatieh Nabih Berry Gov	5
Hospital Sacre Coeur	4
Hospital Rassoul Aazam	3
Al Karim Medical Lab	2
Hospital Tripoli Gouvernemental / Qoubah	1

<b>Number of positive cases without a phone number</b>	
<b>Laboratory/Hospitals</b>	<b>Cases</b>
Hospital Ain wa Zain	7
Hospital Mont liban	3
Hadi Laboratory/ Haret Hreik	2
Rafic Hariri University hospital	1
Hospital Ragheb Harb	1

## A list of the laboratories accredited by the MoPH to conduct PCR tests

### المختبرات الحكومية المؤهلة لإجراء التشخيص المخبري لفيروس كورونا بطريقة الـ RT-PCR

المختبر	الموقع
مستشفى رفيق الحريري الجامعي RHUH	بيروت
مستشفى حلبا الحكومي	حلبا
مستشفى طرابلس الحكومي	طرابلس
مستشفى البترون الحكومي	البترون
مستشفى فتوح كسروان الحكومي (البوار)	كسروان
مستشفى نبيه يزّي الحكومي الجامعي	البلدنة
مستشفى تينين الحكومي	تينين
مستشفى بنت جبيل الحكومي	بنت جبيل
مستشفى بعلمك الحكومي	بعلمك
مستشفى الرئيس الياض الهراوي الحكومي	زحلة

### مختبرات المستشفيات العسكرية

المستشفى العسكري المركزي في بيروت Hôpital Militaire Central	بيروت
---	-------

### المختبرات المؤهلة لأخذ عينات "المسحات الأنفية" بطريقة Drive- thru

مختبر ميديكال دياغنوستيك تريتمانت سنتر (الحمراء)	بيروت
Medical Diagnostic Treatment Center (MDTC)	بيروت
مختبر ميد لاب MedLab SAL CIC ALS (الحمراء - الجبلينور)	بيروت
مختبرات عيتاني Itani Medical Laboratories (المزرعة)	بيروت
مختبر أ ب سي ABC Laboratories	الأسرفية
مختبرات معوض الطبية Mouawad Medical Laboratory	التيّاح
مختبرات الشياح (د. فؤاد ربحان) Riham Medical Center	التيّاح
مختبر إكسبرت لاب Expert Lab	المنصورة
مختبر لايف لاب Life LAB	بعلمك
مستشفى الرياق Riyak Hospital	رياق

المختبرات الخاصة المؤهلة لإجراء التشخيص المخبري لفيروس كورونا بطريقة RT-PCR

المختبر	الموقع
AUBMC مستشفى الجامعة الأميركية	بيروت
Hotel-Dieu de France (HDF) مستشفى أوتيل ديو الجامعي	بيروت
مختبرات رندولف ميريو (الجامعة اليسوعية – المتحف)	بيروت
Laboratoire Rodolphe Mérieux (Université Saint-Joseph)	بيروت
Saint-George Hospital - UMC مستشفى القديس جاورجيوس الجامعي	بيروت
Makassed General Hospital مستشفى المقاصد	بيروت
LAU Medical Center - Rizk Hospital مستشفى رزق الجامعي	بيروت
Hôpital Libanais Geitawi - CHU مستشفى اللبناني الجعيتاوي الجامعي	بيروت
Hôpital Notre-Dame du Rosaire مستشفى الوردية	بيروت
Doctor 's Center مختبر مركز الأطباء	بيروت
Fontana Laboratories مختبر فونتانا (الحمرا)	بيروت
مختبر الأمن العام (العناتية)	بيروت
Laboratoire Jabre-Ghorra مختبرات جبر وغرة	بيروت
Saint Marc Medical & Diagnostic Center مختبر السان مارك	بيروت
Laboratoire Moderne (Modern Lab- Berjaoui) المختبرات الحديثة	الغبري
Sahel General Hospital (SGH) مستشفى الساحل	الغبري
مستشفى الزهراء الجامعي	الغبري
Al Zahraa Hospital - UMC مستشفى الرسول الأعظم	برج الزراجة
مستشفى بهمن	حارة حريك
Al Rassoul Al Aazam Hospital Bahman Hospital	حارة حريك
مختبر ناتيونال دياغنوستك سرفيس كومباني	حارة حريك
National Diagnostic Services Company (NDSC)	حارة حريك
Medical Diagnostic Center مختبر الدكتور محمود عثمان - مركز التحاليل الطبية	المرجة
American Diagnostic Center (ADC) مختبر أميريكين دياغنوستك سنتر	الجناح
Mount Lebanon Hospital مستشفى جبل لبنان	بعنا
Hôpital Saint-George – Hadath مستشفى السان جورج الحدث	بعنا
Al Hadi Laboratory مختبر الهادي	بعنا
INOIE-Liban مختبر	بعنا

Hôpital du Sacré- Coeur مستشفى قلب يسوع	الحازمية
Clinigene مختبر كلينيجان	الحازمية
Hôpital Dr.Samir Serhal مستشفى سرحال	المن
Transmedical for Life مختبر ترانسيميديكال فور ليف	المن
Haroun Hospital مستشفى هارون	الزلفا
Bellevue Medical Center (BMC) مستشفى بلغو	المنصورة
Hôpital Albert Haykal مستشفى هيكال	الكورة
Centre Hospitalier du Nord (CHN) مركز الشمال الإستشفائي	زغرتا
Mazloum Hospital مستشفى المظلوم	طرابلس
Al Mounla Hospital مستشفى المنلا	طرابلس
Nini Hospital مستشفى النيني	طرابلس
مختبر ميكروبيولوجيا الصحة والبيئة LMSE - المعهد العالي للدكتوراه، الجامعة اللبنانية	طرابلس
CHU - Notre-Dame des Secours مستشفى سيدة المعونات الجامعي	جبل
Lab Akiki & Boulos مختبر عقيقي وبولس	جبل
Centre Médical Wakim مختبر والكم	جونية
Ain Wazein Hospital مستشفى عين وزين	الشوف
Hammoud Hospital UMC مستشفى حمود الجامعي	صيدا
Al Karim Medical Laboratory (KML) مختبر الكريم	صيدا
Sheikh Ragheb Harb Hospital مستشفى الشيخ راجب حرب	البيتمنة
Sabbah Diagnostic Center (SDC) مختبر الصباح	البيطية
Jabal Amel Hospital مستشفى جبل عامل	صور
Mashrek Diagnostic Center (MDC) مختبر المشرق	صور
Dar Al Amal University Hospital مستشفى دار الأمل الجامعي	بعلبك
Khoury General Hospital مستشفى خوري	زحلة
Medical Care Center (MCC) مختبر ميديكال كير سنتر	زحلة