

Lebanon National Operations Room Daily Report on COVID-19

Wednesday, October 28, 2020

Report #224



Time Published: 10:30 PM

New in the report:

- Decisions to prevent the spread of the Corona virus.
- Names of laboratories that define the district, places, places, places or climates of reference for printing from places, places, places or climates suitable for public purposes.

1,850 New Cases		75,845 Total Cases since 21.2.2020		602 Total Deaths		36,803 Total Recovered	
1,763 Residents	46 Expats	73,593 Residents	2,252 Expats	12 New Deaths		1,001 New Recovered	

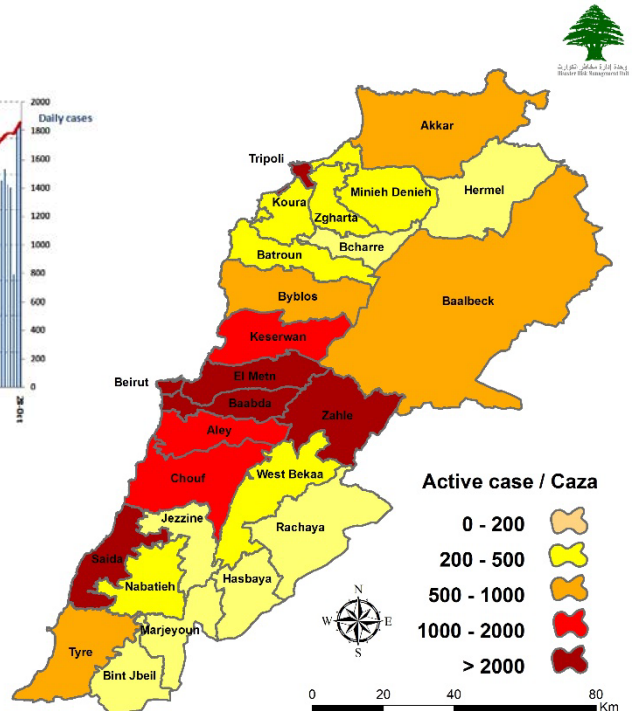
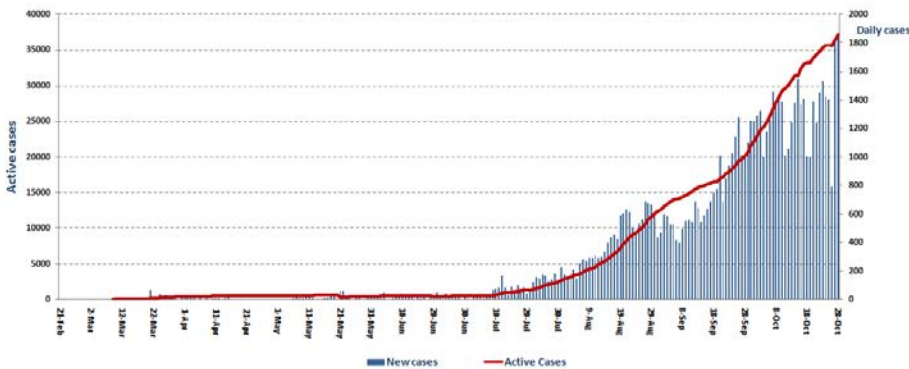
182 Deleted Status due to its recurrence	1,380 Total Cases in the Health Sector	37,356 Total Active Cases	760 Hospitalized Cases	245 Total Cases in ICU
	20 New Cases in the Health Sector	36,596 Cases in Home Isolation	515 Mild Cases	6 New Cases in ICU

1,132,447 COVID-19 Tests since 21.2.2020	Lebanon Status compared to the World			
1,061 COVID-19 Tests at Airport within 24 hrs.	13,349 COVID-19 tests for residents within 24 hrs.	Total Cumulative	73,995	44,565,158
		Total Deaths	590	1,176,196
		Deaths percentage	0,79%	2,63%
		Total recoveries	36,803	32,588,737

Ref: Ministry of Public Health Data

Number of Cases by Location

- 13,345 case is Under investigation



Beirut	171
Ein Al Mreisseh	2
Ras Beirut	5
Rouche	1
Hamra	5
Mseitbeh	3
Mar Elias	4
Unesco	1
Tallet Al Khayat	3
Tallet Al Drouz	1
Mazraa	11
Borj Abi Haidar	5
Malaab Balady	1
Tariq Jdeedeh	10
Ras El Nabaa	11
Bachoura	1
Basta Tahta	4
Marfaa	1
Ashrafieh	29
Horoch	1
Others	72
Chouf	73
Damour	1
Baal Al Naameh	1
Chhim	13
Mazboud	2
Ketermaya	4
Barja	11
Jiyyeh	4
Alman	1
Joun	1
Zaarourieh	4
Semqanieh	3
Kfar Faqoud	1
Serjbal	2
Mgheireh	1
Baaqline	2
Ghrifeh	1
Jahlieh	1
Mokhtara	1
Baqaata	1
Niha	1
Ammatour	3
Kfarnabrakh	2
Al Mrasty	2
Barouk	1
Others	9
Zghorta	19
Zghorta	3
Rasheen	1
Haref Erdeh	2
Majdlayya	4
Kafarfou	4
Meryata	2
Others	3

Baabda	283
Chiah	19
Jnah	11
Al Madora	1
Ouzai	9
Bir Hassan	15
Cite Sportif	1
Ghobeiry	14
Ein Al Rimmaneh	16
Forn Al Shebbak	8
Haret Hreik	25
Lailaki	8
Borj Al Brajneeh	34
Mreijeh	6
Raml Al Aly	1
Tahweetet Ghadir	8
Baabda	5
Hazmieh	10
Fayadieh	1
Rihanieh	1
Hadat	37
Sabnieh	1
Botchay	1
Loueizy	1
Jumhour	2
Kfarshima	10
Wady Shahrour	1
Bsaba	1
Baqleh	1
Deir LA Harf	1
Jumhour - Araya	1
Ein Hamadeh	2
Hasbaya	1
Kfarselwan	1
Others	29
Aley	78
Al Amrousieh	7
Hay Al Sillom	20
Ghadir Choueifat	1
Khaldeh	3
Al Oumra	11
Aramoun	8
Bshamoun	6
Bleibel	2
Bdadoun	2
Aley	4
Kahale	1
Qmatieh	3
Ein Al Rimmaneh	1
Baisour	2
Ainab	1
Soufar	1
Ein Dara	1
Others	4

Kesrwen	100
Sarba	7
Kaslik	1
Zouk Michael	6
Haret AL Mir	2
Ghadir	5
Zouk Mosbeh	10
Adonis	3
Haret Sakher	4
Sahel Alma	7
Kfar Yassine	1
Tabarja	1
Safra	2
Bouar	3
Oqeibeh	4
Ajaltoun	2
Ballouneh	6
Jeita	6
Aintoura	1
Kfarhbab	1
Borj Al Ftou7	1
Ghosta	1
Batha	1
Kfour	1
Harissa	1
Ghineh	1
Dar'oun	1
Mradieh	2
Reifoun	1
Qlei'aat	1
Ashkout	1
Feitroun	1
Baqatet Ashkout	1
Raashine	3
Kfardebian	2
Mayrouba	3
Hrajel	1
Adma & Dafneh	2
Others	3
Koura	17
Amyoun	2
Kfar Saroun	1
Beshmezzine	1
Kfar Hazir	1
Afsdeek	1
Deddeh	1
Anfeh	4
Dahr Al Ein	1
Masqa Shimalia	1
Nakhle	1
Zgharta Mtawlah	1
Others	2
Jezzine	4
Jenesnaya	1
Kfar Jarra	2
Others	1

Matn	236
Borj Hammoud	17
Nabaa	2
Sin El Fil	10
Jdeidet Al Metn	13
Bouchrieh	10
Dora	9
Rawda	6
Sed Al Bouchrieh	16
Sabtieh	9
Metr Naba Saleh	1
Deir Mar Roukoz	1
Dekwaneh	17
Antelias	6
Jal EL Dib	6
Naqqash	7
Zalqa	3
Byaqout	2
Dbayyeh	11
Haret Al Ballan	1
Mansourieh	13
Fanar	14
New Fanar	1
Ein Saadeh	5
Roumieh	3
Bsalim	5
Nabayh	2
Mteileb	1
Rabieh	1
Rabwe	2
Beit Al Char	1
Deek AL Mahdy	1
Mazraet Yashouh	8
Bekfayya	5
Beit Shabab	3
Bhersaf	1
Sakiet Al Misk	1
Hemlaya	3
Broummana	4
Jouret Al Ballout	1
Mar Shaaya	1
Baabdat	1
Beit Mery	2
Montiverde	1
Zahrieh	1
Mtein	1
Mousa Al Douar	1
Zbougha	1
Baskinta	1
Deir Aoukar	1
Others	3
Bsharre	3
Bsharre	1
Ban	1
Others	1

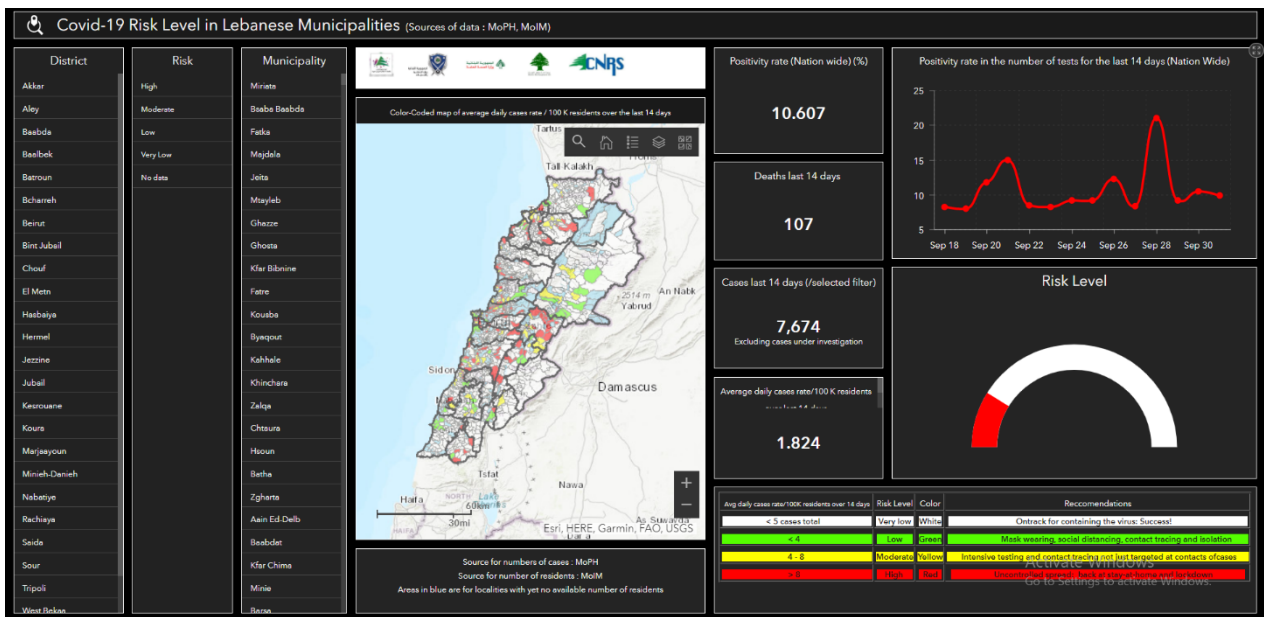
Tripoli	29
Byblos	5
Mastita	3
Blat	3
Eddeh	1
Amshit	2
Kfarsala	1
Halat	1
Jedayel	1
Nahr Ibrahim	1
Monsef	1
Annaya	1
Hsoun	1
Bshally	1
Ramout	1
Benta'el	1
Hboub	1
Gherfine	1
Others	3
Tripoli	92
Zaytoun	14
Bab Al Ramel	2
Tal	5
Qebbeh	11
Zahrieh	2
Tabbaneh	4
Mina 1	10
Bsatine Al Mina	1
Beddawy	14
Madina Al Jadidah	4
Beddawy Camp	2
Others	23
Batroun	16
Batroun	6
Kfar Abida	2
Shekka	2
Shebtine	1
Abrine	1
Ras Nhash	2
Others	2
Nabatieh	20
Nabatieh Tahta	1
Nabatieh Al Fawqa	1
Zebdine	1
Kfra Tebnite	1
Houmine LA Fawka	1
Harouf	1
Dweir	2
Mayfadoun	2
Kfar Seer	2
Yuhmor	1
Western Seer	1
Others	6

Baalbek	77
Baalbek	39
Ras El Ein	1
Ein Borday	1
Doures	1
Nahle	1
Kfardan	4
Ras Baalbek I Sahl	1
Al Ein	1
Arsal	2
Deir Al Ahmar	3
Msheirfeh	1
Bednayel	2
Qasr Nabba	3
Tamnine Al Fawka	2
Chmestar	1
Tarayya	2
Talya	1
Falaway	2
Others	9
Hermel	5
Hermel	2
Ras Baalbek	1
Others	2
Rashayya	5
Rashaya Al Wady	1
Rashaya Al Fawka	3
Others	1
Saida	77
Old Saida	7
Bramieh	1
Hlalieh	5
Haret saida	3
Miyye w Miyyeh	3
Ein Al Helwe	9
Abra	7
Ein Al Delb	1
Ghazieh	6
Zrarieh	3
Ansarieh	1
Loubieh	1
Saksakieh	1
Aqtanite	2
Arab Al Jal	1
Anqoun	1
Marwanieh	1
Others	24
Bint Jbeil	3
Rmeish	1
Kafra	1
Others	1

Zahleh	54
Hoch Zaraaneh	3
Rassieh	1
Maallaqa	2
Hoch Al Oumara	1
Arady	1
Forzol	1
Ablah	1
Niha	1
Ksara	3
Shtoura	1
Taalabaya	1
Jdita	1
Taanayel	2
Qab Elias	6
Mreijat	1
Hoch Al Debs	1
Majdel Anjar	3
Riyak	3
Ali Al Nahry	4
Kfarzabad	4
Haret Al Fikany	1
Al Maydan	3
Others	9
Wester Beqaa	28
Mashghara	10
Jeb Jinnine	2
Lala	3
Kamed Al Loz	1
Ghazzeh	2
Khiyara	1
Sweiry	1
Suhmor	2
Marej	1
Others	5
Tyre	22
Borj Al Shemaly	1
Deb'aal	1
Deir Ames	1
Barish	1
Qana	2
Saddiqeen	1
Ein Baal	1
Bazourieh	1
Deir Kifa	1
Zahira	1
Tyre	1
Jouya	1
Rashidieh	2
Others	7
Others	328

Akkar	66
Halba	4
Shiekh Mohamad	1
Sheikh Taba	1
Mashha	1
Arqa	1
Borj Al Arab	2
Zouk Al Habalsa	1
Ein Yaacoub	1
Old Akkar	3
Tal Abbas	2
Koueikhat	1
Khreibet Al Jundy	1
Hayssa	1
Qlei'aat	2
Bebnine	5
Nahr Al Bared	5
Berqayel	5
Bazzal	1
Qab'eet	1
Meshmesh	1
Fneidek	5
Majdala	1
Rahbeh	1
Wady Al Jamous	1
Ein Al Zeit	1
Masht Hammoud	1
Tleel	1
Qobayyat	3
Andkit	3
Akroum	1
Others	10
Menyeh Dunyeh	34
Menyeh	16
Bhannine	2
Seer Al Dunniyeh	6
Asoun	2
Taran	2
Safira	1
Kfar Habo	1
Bakh'oun	2
Others	2
Marjeyoun	5
Marjeyoun	2
Khiyam	1
Taybe	1
Touline	1
Hasbaya	3
Hasbaya	1
Ein Jarfa	1
Others	1

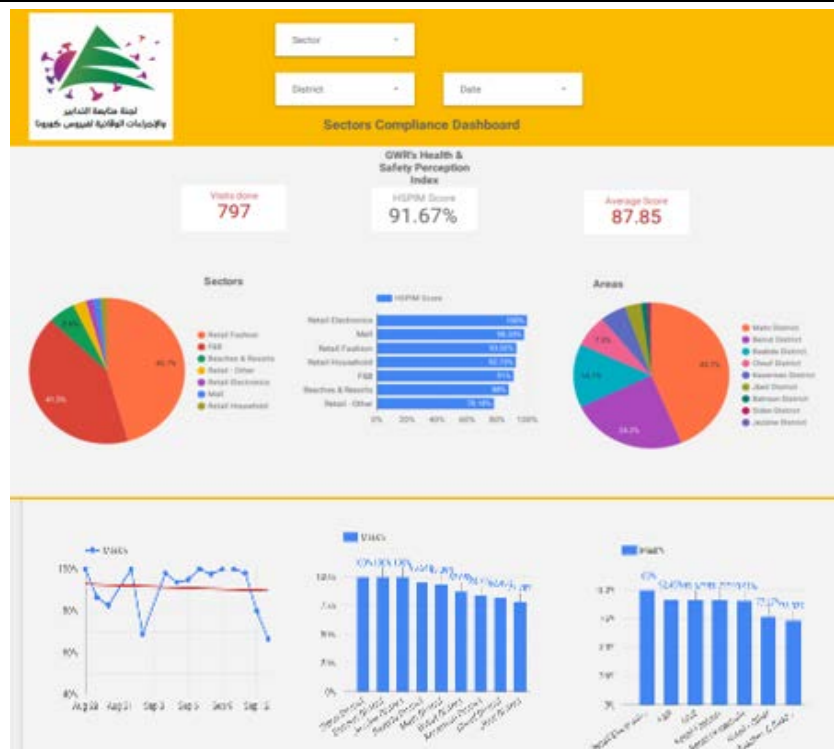
The Online platform to measure the level of risk of the spread of the new Corona virus



This interactive platform allows you to know the level of risk of spreading the kurna virus according to districts, based on the number of cases registered daily and the number of residents in each district. For more information on a daily basis, you can access the following link:

<https://bit.ly/DRM-RiskLevelInMunicipalities>

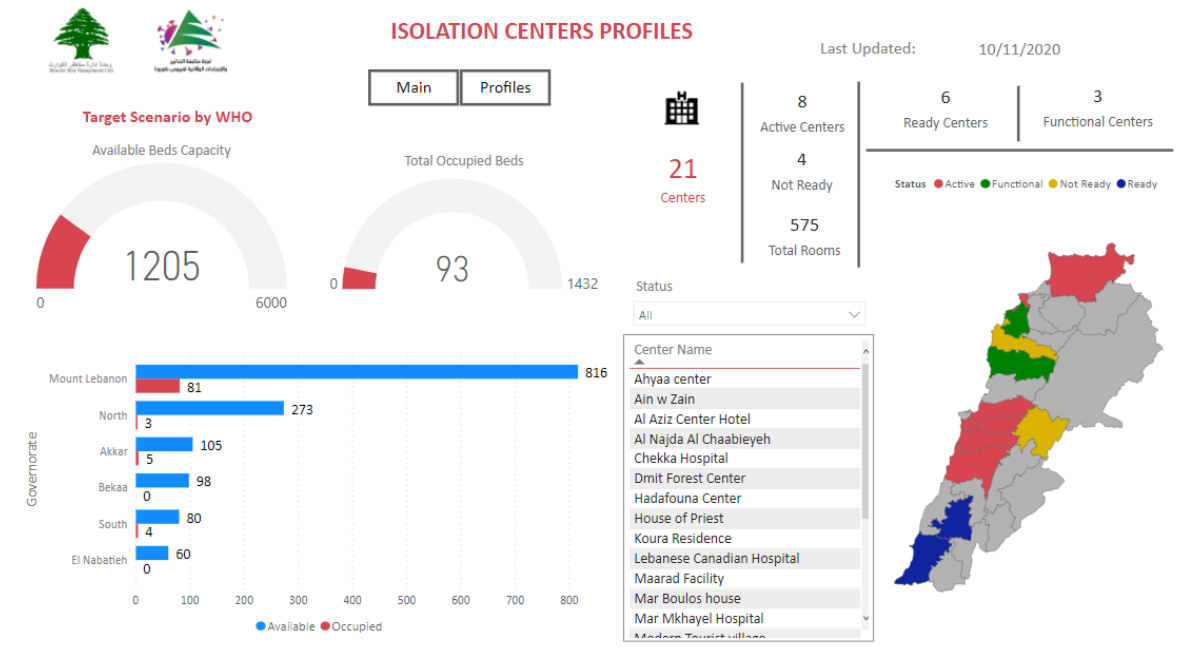
Online platform to track sector commitment in general mobilization procedures



Based on the recommendation issued by the National Committee for Follow-up of Preventive Measures and Measures to Confront the Coronavirus to open all sectors, provided that the general mobilization procedure (safe distance, muzzle, and hand sterilization) be applied, a special electronic platform was created that allows monitoring and measuring the percentage of commitment by various sectors on an ongoing basis.

The detailed results can be viewed directly at the following link <http://bit.ly/covidsectordata>

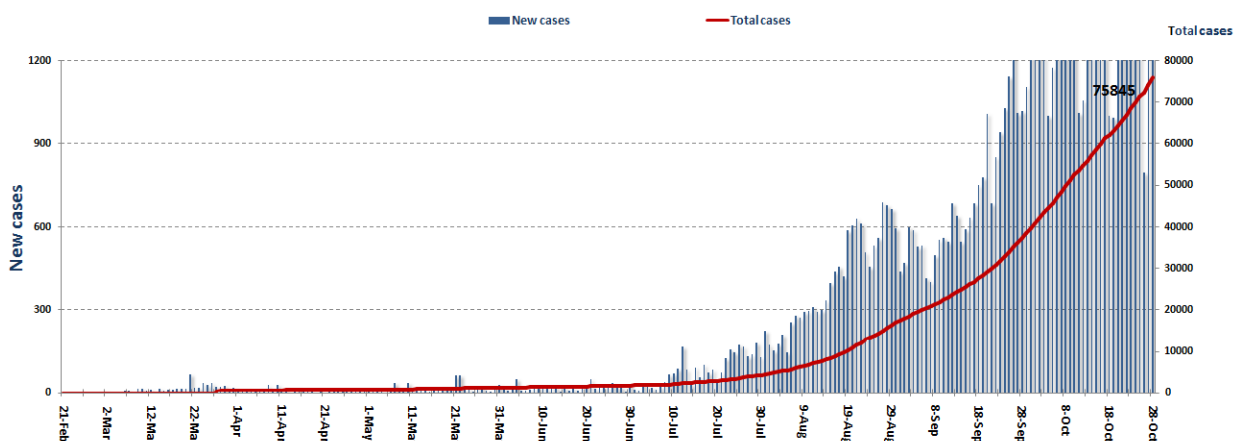
Occupancy rate of isolation centers for cases infected with Coronavirus



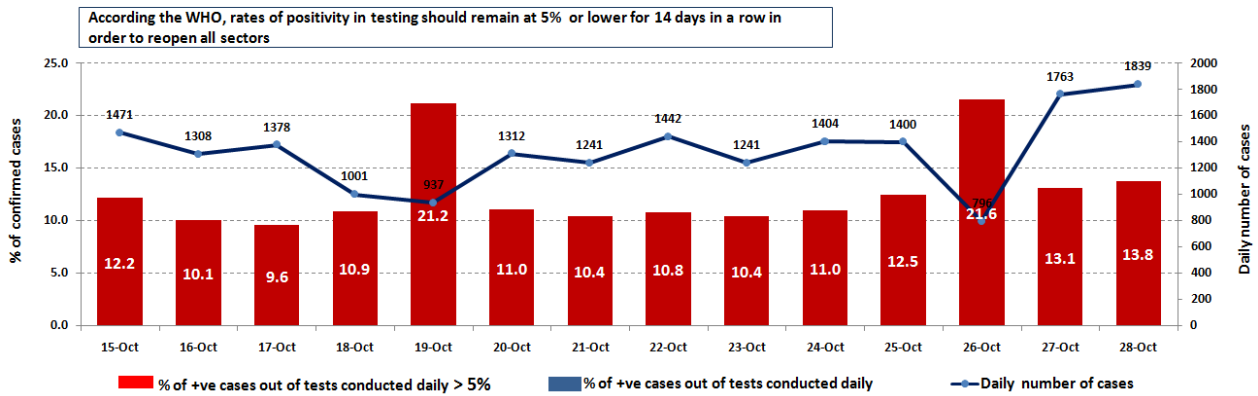
For more information about the isolation centers' distribution and the percentage of their occupancy, enter the following link: <http://bit.ly/DRM-IsolationCentersProfiles>

Note: These centers have been equipped in cooperation between the National Committee for Follow-up of Preventive Measures and Measures to Confront the Coronavirus and Governors and Municipalities, the United Nations Development Program, the World Health Organization, UNICEF, the Ministry of Public Health, the Syndicate of Nurses in Lebanon and the Syndicate of Specialists in Social Work.

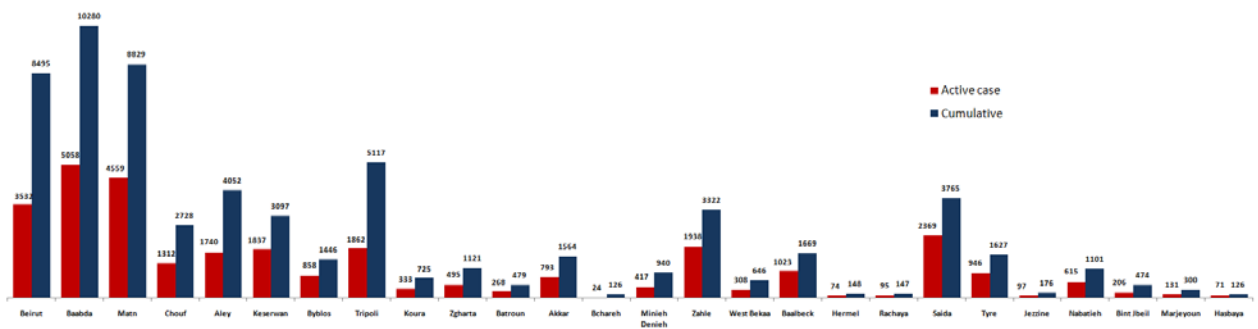
Cases per day



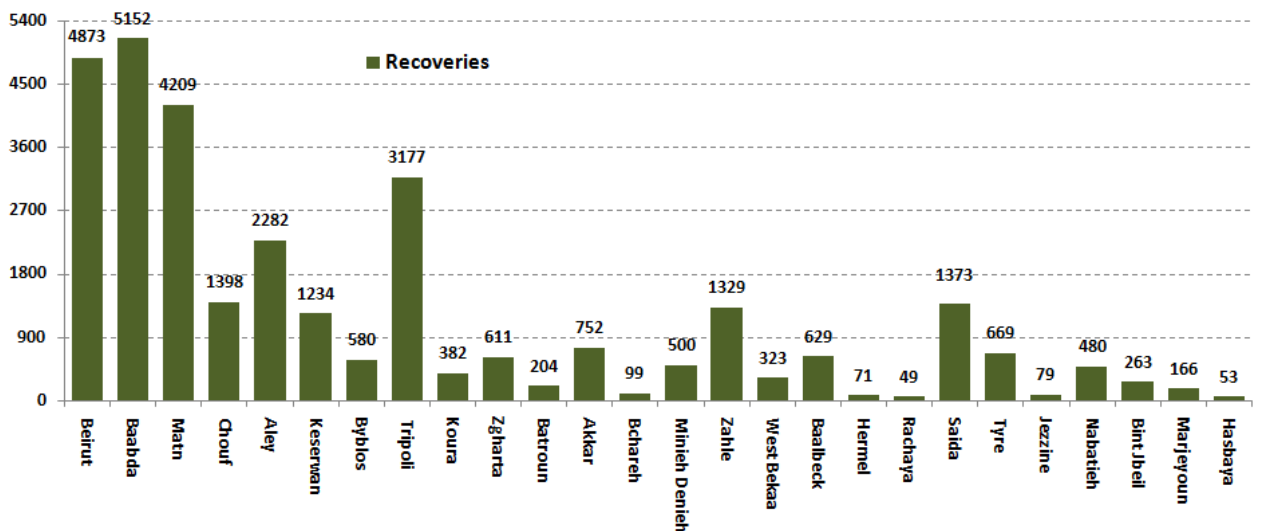
The percentage of positive cases out of the number of daily checks (15-28 Oct 2020)



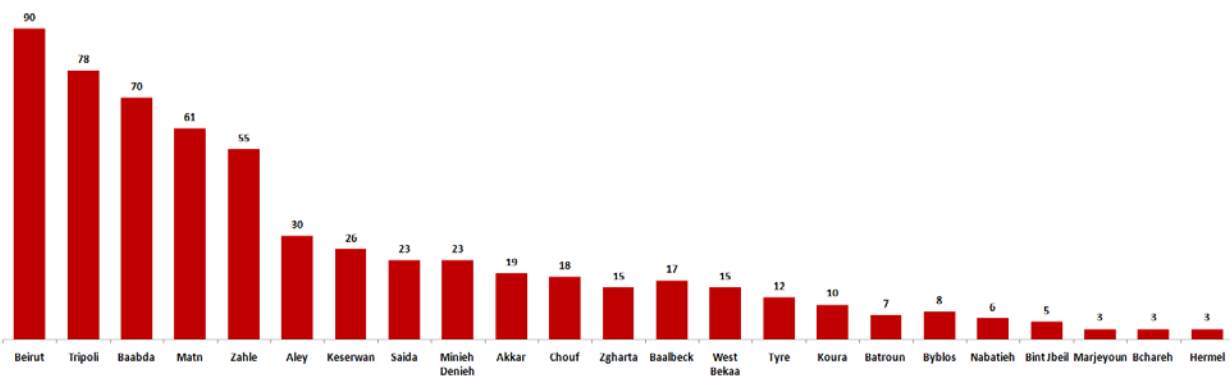
Distribution of Active Cases by Districts



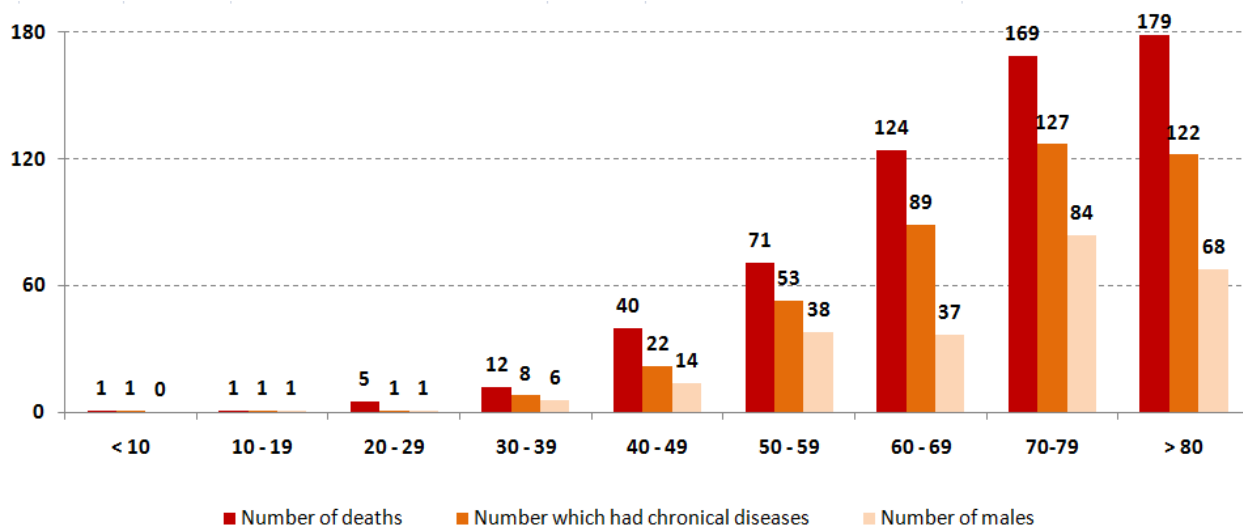
Recoveries



Distribution of deaths by Governorates



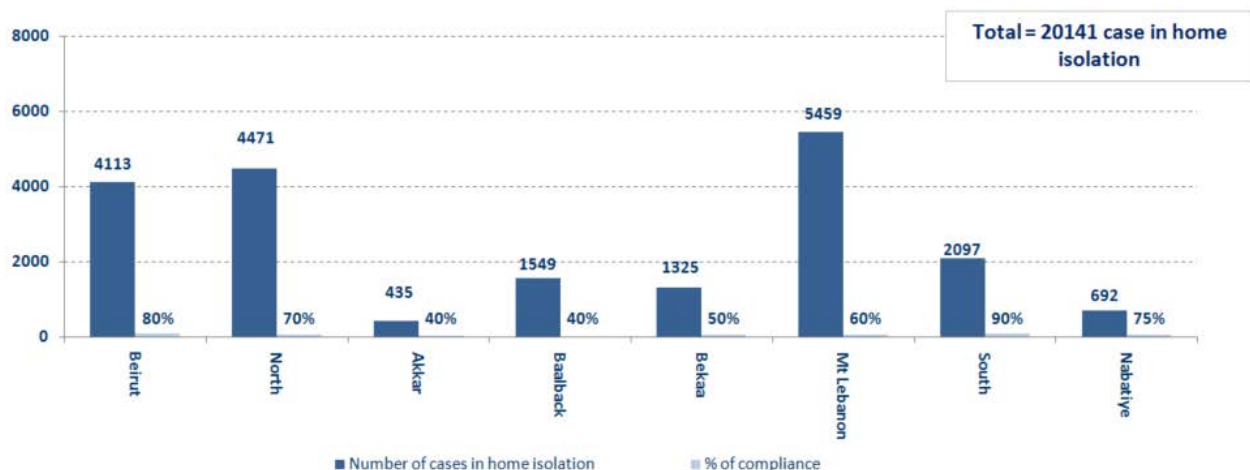
Distribution of deaths by Age



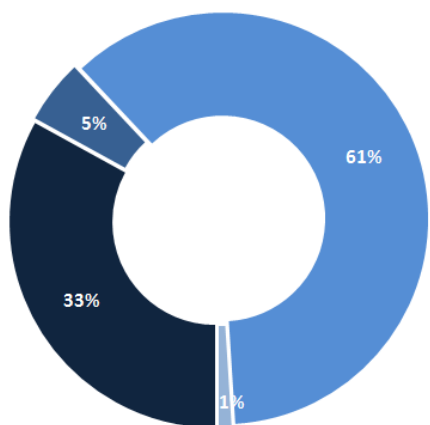
The distribution of the recorded deaths during the past 24 hours

Hospital	Residence	Gender	Age	Chronic
AUBMC	Beirut	Male	49	Yes
Riyyak Hospital	Rashaya	Male	49	Yes
Tal Chiha	Zahleh	Female	77	Yes
Haroun	Matn	Male	80	Yes
Heart of Jesus Hospital	Matn	Male	46	Yes
Roum Hospital	Matn	Male	75	Yes
Al Mayas Hospital	Zahleh	Female	74	No
RHUH	Baabda	Male	84	Yes
Heart of Jesus Hospital	Zahleh	Male	73	Yes
Mazloum Hospital	Tripoli	Female	67	Yes
Riyyak Hospital	Baalbek	Female	78	Yes
Saint George - Hadath	Zahleh	Male	72	Yes

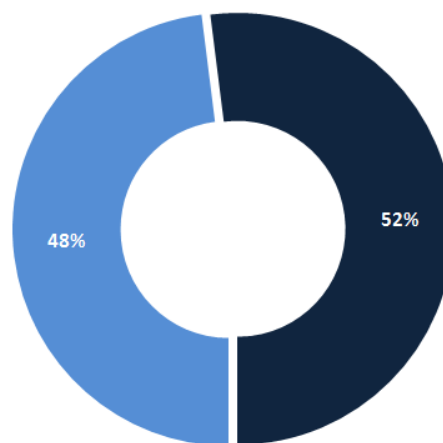
Number of individuals in home isolation and percentage of commitment to isolation



Exposure



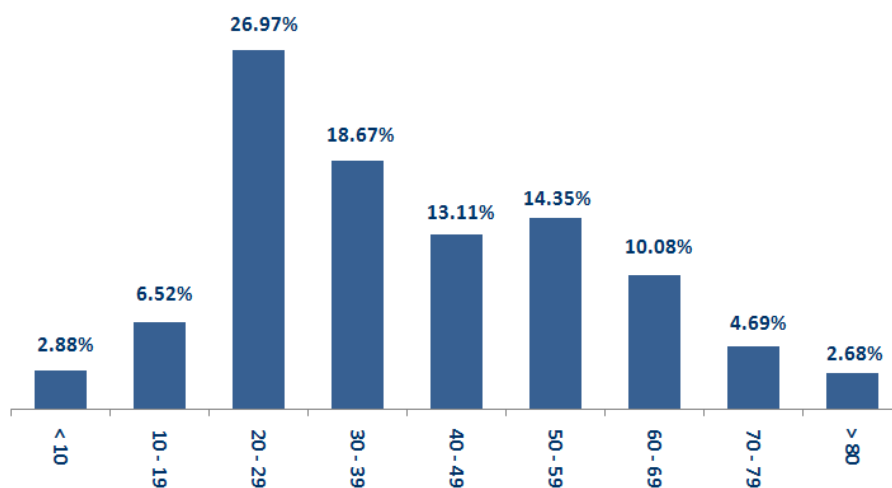
Distribution according to gender



■ Female ■ Male

■ Contact with confirmed case ■ Travel related ■ Under investigation ■ Unidentified source

Distribution by age



Decisions and actions taken – 10/28/2020

Ministry of Public Health

- The Ministry of Public Health called in the meeting of the scientific committee to close neighborhoods in some major cities, including the capital Beirut, in order to prevent the outbreak of the Corona virus.
- The Ministry of Public Health confirmed that no vaccine will be imported from any country before it is officially approved by the World Health Organization

Arriving from	Company	Flight Number	Number of Positive Cases
N/A			
Total			0

Lebanese Red Cross

235,498	Number of PCR tests transferred to laboratories	53,000 (123 New)	Number of additional ambulance centers ready to respond	48	ambulance centers	7,127 (61 New)	cases transferred to hospitals
166	Number of volunteers trained to transfer PCR tests	1,498	Number of trained paramedics	8,804 (14 New)	total number of respondents	93,911 (525 New)	number of those benefiting from awareness *sessions
967	The number of university volunteers trained to follow up on prevention measures in companies and institutions	291	Number of university volunteers trained to conduct awareness sessions	550	total LRC volunteers for covid19	8,701 (25 New)	number of trained managers for isolation centers
4,359 (1 New)	Number of beneficiaries from educational electronic platforms COVID-19	261,535 (131 New)	Number of distributed equipment	1,249,835	total distributed posters, brochures, and flyers on covid19 prevention	716 (17 New)	number of prisons that have been disinfected

General Directorate of Internal Security Forces

The number of seizure records during the past 24 hours					The total number of records since 03/08/2020		
Written records of violating institutions (absorptive capacity and preventive measures)					0		
Written records of persons violating the decision to wear a mask					0	Beirut	21,627
Written records of people violating the general mobilization decision (Aragil* and social distancing)					196	Mount Leb	21,177
Total					196	Beqaa	9,027
						North	7,596
Beirut	Mount Leb	Beqaa	North	South		South	8,089
49	58	21	3	65		Total	67,516

General Directorate of State Security

The report of the closure of the Civil Planning Office in Sarai Jbeil due to the infection of a staff member with the Coronavirus. - Reporting that the number of people infected with Coronavirus in the State Security Agency has reached 69. Notification of the percentage of compliance with the general mobilization decision in the governorates, which came as follows within the past 24 hours:

Beirut	South	North	Akkar	Beqaa	Nabateih	Baalbek Hermel	Mount Leb
25%	53%	66%	64%	70%	87%	10%	54%

General Directorate of General Security

-The report that a member of the Internal Security Forces was infected with the Coronavirus in the ancient town of Akkar.
- Reporting the commitment of the municipalities to the decision of the Minister of Interior and Municipalities:

Municipalities that abided by the decision	Municipalities didn't abide by the decision
Haris, Ain Kafr Zabad, Taalabaya, Ablah, Jdita, Bareij, Al Nabi Sheet, Tamnin Al Fawqa, Tamnin Al Tahta, Kfardan	Al-Manara, Al-Rawda, Al-Suwairi, Baakline, Ain Zhalta, Al-Barouk, Al-Warhaniya, Kafr Nabrakh, Bednayel, Kafr Kila, Qulaia

- Follow up the implementation of the required security and preventive measures at the airport, ports and border crossings.
- Reporting cases registered in the various districts and cases in home quarantine.

Ministry of Public Works and Transportation

Departing Flights		Arriving Flights	
Number of Flights	37	Number of Flights	36
Number of Departing Individuals	3,592	Number of Arrivals	2,987

Port	Entered			Left		
	Import	Direction	#	Export	Direction	#
Beirut	Containers	Alexandaria	1			
	Cattles	Koper	1			
Tripoli				Trucks	Turkey	1
				Cars	Mersen	1
Total			2			2

General announcements

- Mount Lebanon governorate issued 4 decisions related to limiting the spread of the Coronavirus in several towns and villages as follows:

- The first decision: the southern region of Al-Kharroub (Za'aruriya, Al-Mutla, Baba, John, Hasrout, Mazraat Al-Dahr)
 - Cancellation of all social events, cafes, expresses, closed gathering places for children, clubs, GYM halls, and public parks are closed without exception.
 - Determining the working hours of food and non-food commercial establishments, with the exception of bakeries and institutions related to the health sector (hospitals, pharmacies, dispensaries ...) and warehouses for the distribution of fuel and gas.
 - Restaurants must also adhere to the 50% rate of operation, and that health conditions, prevention and public safety measures are to be observed.
 - Mandating municipalities to strictly apply public safety measures and preventive measures.
 - Assigning the Internal Security Forces to coordinate with the Municipal Police and the Southern Kharroub District Police to implement the content of this decision and to organize a report according to the rules

- The second decision: isolating the town of Ammour, located in the Chouf district.
 - Close the town completely for a week, and cancel all social events, parties, parties, and gatherings of all kinds.
 - Excluded exclusively from the closure decision and institutions related to the health sector (hospitals, pharmacies, dispensaries ...), furnaces and fuel and gas distribution depots, as well as limiting working hours for foodstuff stores of all kinds, provided that health conditions and preventive and public safety measures are adhered to.
 - Assigning the municipality of Amatour to strictly apply preventive measures.
 - Assigning the internal security forces to coordinate with the Amatour municipality to implement the content of this decision and to organize a report according to the rules.

- The third decision: isolating the town of Naameh - Haret Al-Naameh, located in the Chouf district.
 - Close the town completely for a week, and cancel all social events, parties, parties, and gatherings of all kinds.
 - Excluded exclusively from the closure decision and institutions related to the health sector (hospitals, pharmacies, dispensaries ...), furnaces and fuel and gas distribution depots, as well as limiting working hours for foodstuff stores of all kinds, provided that health conditions and preventive and public safety measures are adhered to.
 - Assigning the municipality to strictly apply preventive measures.
 - Assigning the Internal Security Forces to coordinate with the municipality of Al-Na'a - Haret Al-Naameh to implement the content of this decision and organize a report in accordance with the rules
- Fourth decision: Northern El Kharroub region - Chouf district.
 - Cancellation of all social events, cafes, expresses, closed gathering places for children, clubs, GYM halls and public parks without exception.
 - Determine the working hours of food and non-food commercial establishments, with the exception of bakeries and institutions related to the health sector (hospitals, pharmacies, dispensaries ...) and fuel and gas distribution depots. Restaurants must also adhere to the 50% rate of operation, and that health conditions and preventive and public safety measures are adhered to.
 - Mandating municipalities to strictly apply public safety measures and preventive measures.
 - Assigning the Internal Security Forces to coordinate with the Municipal Police and the Northern Kharroub District Police to implement the content of this decision and to organize a report in accordance with the rules.

Note: The decisions can be found at www.drm.pcm.gov.lb

Examples of lack of adherence to safety measures

Failure of some municipalities to abide by the Ministry of Interior and Municipalities Decision No. 1025/2020 related to the closure of towns that have a high risk of the spread of the epidemic.

- Demand gatherings and demonstrations.
- Failure to comply with the preventive measures and procedures required in several stores and markets (putting on a muzzle or face mask, sterilizing hands, maintaining a safe distance).
- Non-compliance with the 50% occupancy rate in several restaurants and amusement game centers.
- Gatherings for social events.
- Failure of those in contact with confirmed cases to adhere to home isolation procedures until the results of the laboratory tests are issued.

If you feel any symptoms, call directly the hotline of the Ministry of Public Health: 1214 or 01/594459

Laboratories that did not comply with the procedures approved by the MoPH About the information required to be recorded for infected cases within the past 24 hours

Laboratories that did not specify the Governorate	
Laboratory/Hospitals	Cases
Laboratoire Inovie / Fayyadieh	110
Hadi Laboratory/ Haret Hreik	80
Military Hospital / Adlieh	35
Hotel Dieu de France	11
Hospital Bahman	3
Mashrek Medical Diagnostic Center MDC	2
Hospital American university	1

Number of positive cases without specifying the place of residence	
Laboratory/Hospitals	Cases
Hadi Laboratory/ Haret Hreik	123
Laboratoire Inovie / Fayyadieh	110
Military Hospital / Adlieh	77
Hotel Dieu de France	11
Mashrek Medical Diagnostic Center MDC	9
Al Karim Medical Lab	7
Hospital Rassoul Aazam	6
Hospital Ragheb Harb	5
Hospital Bahman	3
Hospital American university	3
Hospital Ain wa Zain	1
Laboratoire Akiki et Boulos	1
Hospital Centre Hospitalier du Nord	1

Number of positive cases without a phone number	
Laboratory/Hospitals	Cases
Hotel Dieu de France	8

A list of the laboratories accredited by the MoPH to conduct PCR tests

المختبرات الحكومية المؤهلة إجراء التشخيص المخبري لفيروس كورونا بطريقة الـ RT-PCR

المختبر	الموقع
مستشفى رفيق الحريري الجامعي RHUH	بيروت
مستشفى حلبا الحكومي	حلبا
مستشفى طرابلس الحكومي	طرابلس
مستشفى البترون الحكومي	البترون
مستشفى فتوح كسروان الحكومي (البوار)	كسروان
مستشفى نبيه يزّي الحكومي الجامعي	البلدنة
مستشفى تينين الحكومي	تينين
مستشفى بنت جبيل الحكومي	بنت جبيل
مستشفى بعلبك الحكومي	بعلبك
مستشفى الرئيس الياض الهراوي الحكومي	زحلة

مختبرات المستشفيات العسكرية

Hôpital Militaire Central	المستشفى العسكري المركزي في بيروت	بيروت
---------------------------	-----------------------------------	-------

المختبرات المؤهلة لأخذ عينات "المسحات الأنفية" بطريقة Drive- thru

مختبر ميديكال دياغنوستيك تريتمانت سنتر (الحمراء)	بيروت
Medical Diagnostic Treatment Center (MDTC)	بيروت
مختبر ميد لاب MedLab SAL CIC ALS (الحمراء - الجبلينور)	بيروت
مختبرات عياني Itani Medical Laboratories (المزرعة)	بيروت
مختبر أ ب سي ABC Laboratories	الأشرفية
مختبرات معوض الطبية Mouawad Medical Laboratory	التياح
مختبرات الشياح (د. فواد ربحان) Rihan Medical Center	التياح
مختبر إكسبرت لاب Expert Lab	المنصورة
مختبر لايف لاب Life LAB	بعلبك
مستشفى الرياق Riyak Hospital	رياق

المختبرات الخاصة المؤهلة لإجراء التشخيص المخبري لفيروس كورونا بطريقة الـ RT-PCR

المختبر	الموقع
AUBMC مستشفى الجامعة الأميركية	بيروت
Hotel-Dieu de France (HDF) مستشفى أوتيل ديو الجامعي	بيروت
مختبرات رودولف ميريو (الجامعة اليسوعية – المتحف) Laboratoire Rodolphe Mérieux (Université Saint-Joseph)	بيروت
Saint-George Hospital - UMC مستشفى القديس جارجيوس الجامعي	بيروت
Makassed General Hospital مستشفى المقاصد	بيروت
LAU Medical Center - Rizk Hospital مستشفى رزق الجامعي	بيروت
Hôpital Libanais Geitawi - CHU مستشفى اللبناني الجعيتاوي الجامعي	بيروت
Hôpital Notre-Dame du Rosaire مستشفى الوردية	بيروت
Doctor 's Center مختبر مركز الأطباء	بيروت
Fontana Laboratories مختبر فونتانا (الحمرا)	بيروت
مختبر الأمن العام (العناتية)	بيروت
Laboratoire Jabre-Ghorra مختبرات جبر وغرة	بيروت
Saint Marc Medical & Diagnostic Center مختبر السان مارك	بيروت
Laboratoire Moderne (Modern Lab- Berjaoui) المختبرات الحديثة	الغبيوي
Sahel General Hospital (SGH) مستشفى الساحل	الغبيوي
مستشفى الزهراء الجامعي	الغبيوي
Al Zahraa Hospital - UMC مستشفى الرسول الأعظم	برج الراجحة
مستشفى بهمن	
Al Rassoul Al Aazam Hospital Bahman Hospital	حارة حريك
مختبر ناتيونال دياغنوستك سرفيس كومباني	
National Diagnostic Services Company (NDSC)	حارة حريك
Medical Diagnostic Center مختبر الدكتور محمود عثمان - مركز التحاليل الطبية	المرجة
American Diagnostic Center (ADC) مختبر أميريك دياغنوستك سنتر	الجناح
Mount Lebanon Hospital مستشفى جبل لبنان	بعنا
Hôpital Saint-George – Hadath مستشفى السان جورج الحدث	بعنا
Al Hadi Laboratory مختبر الهادي	بعنا
INOIE-Liban مختبر	بعنا

Hôpital du Sacré- Coeur مستشفى قلب يسوع	الحازمية
Clinigene مختبر كلينيجان	الحازمية
Hôpital Dr.Samir Serhal مستشفى سرحال	المتن
Transmedical for Life مختبر ترانس ميدكال فور ليف	المتن
Haroun Hospital مستشفى هارون	الزلفا
Bellevue Medical Center (BMC) مستشفى بلفو	المنصورة
Hôpital Albert Haykal مستشفى هيكال	الكورة
Centre Hospitalier du Nord (CHN) مركز الشمال الإشتغاني	زغرتا
Mazloum Hospital مستشفى المظلوم	طرابلس
Al Mounla Hospital مستشفى الملا	طرابلس
Nini Hospital مستشفى النيني	طرابلس
مختبر ميكروبيولوجيا الصحة والبيئة LMSE - المعهد العالي للدكتوراه، الجامعة اللبنانية	طرابلس
CHU - Notre-Dame des Secours مستشفى سيدة المعونات الجامعي	جبل
Lab Akiki & Boulos مختبر عقيقي وبولس	جبل
Centre Médical Wakim مختبر واكيم	جونية
Ain Wazein Hospital مستشفى عين وزين	الشوف
Hammoud Hospital UMC مستشفى حمود الجامعي	سيدا
Al Karim Medical Laboratory (KML) مختبر الكريم	سيدا
Sheikh Ragheb Harb Hospital مستشفى الشيخ راجب حرب	البيتمنة
Sabbah Diagnostic Center (SDC) مختبر الصباح	البيطية
Jabal Amel Hospital مستشفى جبل عامل	صور
Mashrek Diagnostic Center (MDC) مختبر المشرق	صور
Dar Al Amal University Hospital مستشفى دار الأمل الجامعي	بعلبك
Khoury General Hospital مستشفى خوري	زحلة
Medical Care Center (MCC) مختبر ميدكال كير سنتر	زحلة