





Lebanon National Operations Room Daily Report on COVID-19

Sunday, September 27, 2020

Report #193

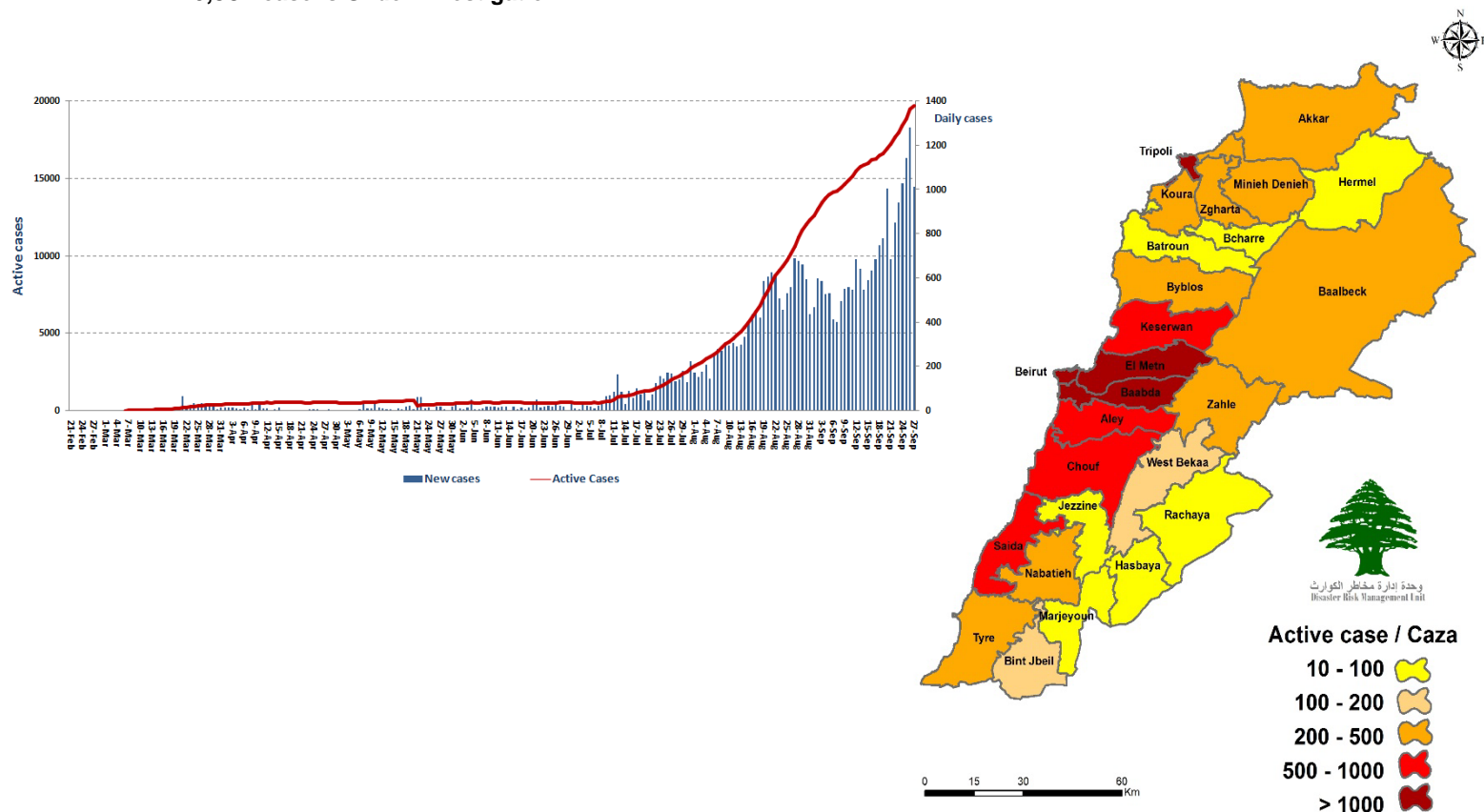
Time Published: 10:00 PM

1,012 New Cases		36,240 Total Cases since 21.2.2020		347 Total Deaths		16,089 Total Recovered	
990 Residents	22 Expats	34,591 Residents	1,649 Expats	7 New Deaths		655 New Recovered	
962 Total Cases in the Health Sector		19,804 Total Active Cases		574 Hospitalized Cases		173 Total Cases in ICU	
13 New Cases in the Health Sector		19,230 Cases in Home Isolation		401 Mild Cases		21 New Cases in ICU	
766,989 COVID-19 Tests since 21.2.2020		Lebanon Status compared to the World					
1,022 COVID-19 Tests at Airport within 24 hrs.		11,914 COVID-19 tests for residents within 24 hrs.		Total Cumulative		36,240	
				Total Deaths		347	
				Deaths percentage		0,95%	
				Total recoveries		16,089	
						33,182,624	
						1,000,350	
						3,01%	
						24,507,219	

Ref: Ministry of Public Health Data

Number of Cases by Location

- 6,984 case is Under investigation



Beirut	Cases
Ein El Mreiseh	6
Ras Beirut	14
Manara	26
Qoreitem	5
Rouche	18
Hamra	25
Mseitbeh	4
Mar Elias	4
Tallet El Khayyat	4
Dar El Fatwa	2
Zarif	2
Mazraa	27
Borj Abi Haidar	3
Al Malaab El Baladi	1
Tariq Jdeedeh	29
Horch	1
Ras El Nabeh	3
Basta Tahta	3
Achrafieh	20
Others	6
Baabda	Cases
Chiah	14
Jnah	4
Ouzai	5
Bir Hasan	7
ghobeiry	5
Ein El Rimmeneh	9
Furn El Chubbak	3
Haret Hreik	35
Borj El Brajneeh	28
Mreijeh	2
Tahweetet El Ghadir	6
Baabda	8
Hazmieh	1
Hadat	11
Kfarshima	1
Rweisat Salima	1
Mdeirej	1
Chbanieh	1
Others	2
Chouf	Cases
Saadiyat	1
Naameh	2
Shheem	3
Daraya	2
Ketermaya	1
Barja	3
Dibbiyyeh	1
Jadra	2
Joun	1
Zaarourieh	1
Baqaata	1
Zaaroun	1
Zaarourieh	1
Others	1
Jbeil	Cases
Amchit	1
Halat	1
Monsef	1

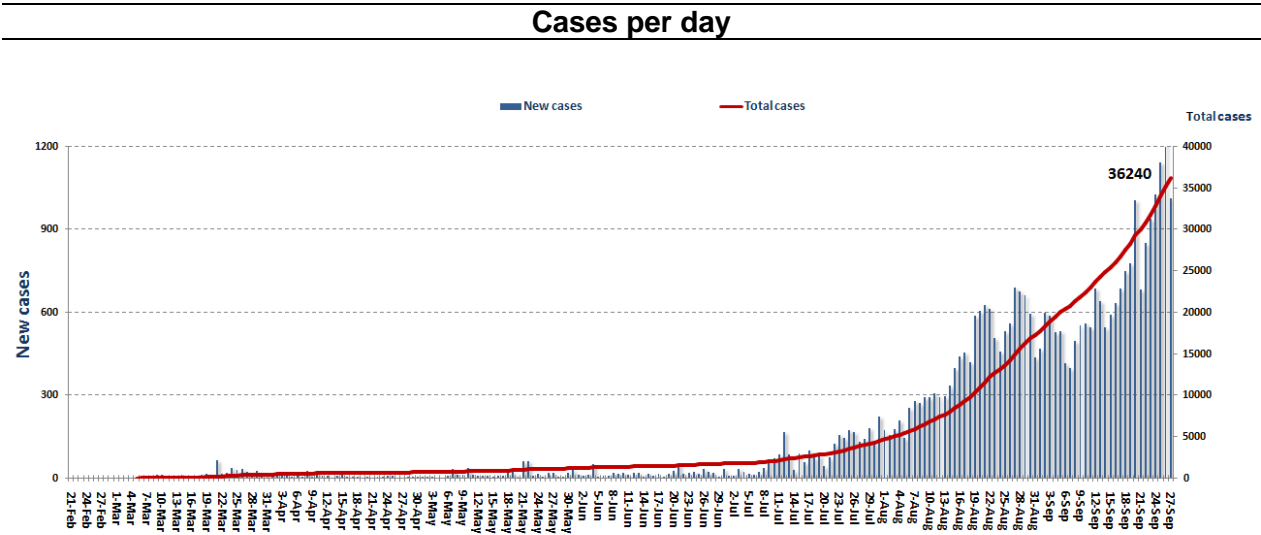
Matn	Cases
Borj Hammoud	9
Nabaa	4
Sin el Fil	4
Horsh Tabet	1
Jesr El Basha	1
Jdeidet El Metn	4
Bouchrieh	1
Doura	2
Rawda	1
Sed El Bouchrieh	1
Sabtieh	3
Deir Mar Roukoz	1
Dekwene	10
Antilias	2
Jal El Dib	2
Byaqout	3
Dbayeh	5
Mansourieh	1
Fanar	5
Ein Saadeh	3
Roumieh	1
Bsalim	1
Nabayh	2
Mteileb	2
Rabwe	1
Beit Chaar	1
Deek El Mahdi	1
Mazraet Yashouh	1
Zikrit	1
Beit Shabab	1
Ein El Kharroube	1
Qornet El Hamra	4
Baabdat	1
Beit Merry	1
Qaaqour	1
Aintoura	1
Baskinta	2
Aleyh	Cases
Amrousieh	11
Hay El Sillom	8
Choueifat El Qebbe	3
Khalde	3
El Oumara	4
Deir Koubel	3
Aramoun	7
Bshamoun	3
Ein Anoub	1
Bleibel	2
Houmal	1
Aley	7
Kahale	4
Qmatieh	1
Bkheshtayh	1
Kayfoun	1
Kfarmatta	1
Bhamdoun	1
Majdelbaana	2
Bedghan	2
Btater	2
Others	2

Zahleh	Cases
El Maallaqa	2
Hoch El Oumara	3
Ferzol	2
Ablah	1
Ksara	1
Taalabaya	7
Saadnayel	5
Qab Elias	9
Hoch Mandara	1
Mreijat	1
Hoch Qaysar	1
Bar Elias	26
Deir Zannoun	1
Hoch Mous-Anjar	2
Majdel Anjar	1
Kfar Zabad	5
Others	5
Western Bekaa	Cases
Ammiq	3
Kamed El Loz	2
Ghazzeh	23
Hoch El Hareemeh	1
Marj	1
Others	3
Baalbak	Cases
Baalbak	2
Doures	1
Fekha	2
Qaa Baalbak	1
Beit Chama	8
Tarayya	1
Nabe Sheeth	1
Others	9
Hermel	Cases
Hermel	1
Rashaya	Cases
Mheidtheh	1
Saida	Cases
Saida El Kadeemeh	6
Hlalieh	3
Haret Saida	4
Ein El Hilwe	1
Aabra	6
Ghazieh	3
Maghdouche	1
Sarafand	1
Najjarieh	1
Others	10
Tyre	Cases
Tyre	6
El Bass	1
Jannata	1
Sreefa	1
Abbasieh	3
Qleileh	1
Jezzine	Cases
Mrach El Hbas	1
Reihan	1

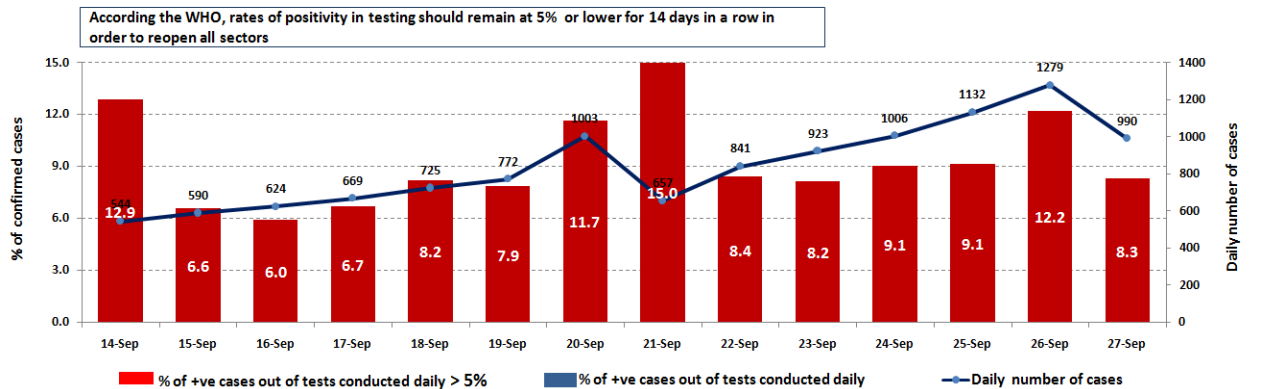
Tripoli	Cases
Tal	3
Mohatra	1
Hadid	1
Qebbe	7
Zahrieh	2
Bsatin Trablous	1
Mina	34
Bsatin El Mina	4
Qalamoun	2
Beddawi	14
Others	27
Koura	Cases
Deddeh	1
Anfeh	2
Dahr El Ein	3
Barsa	1
Others	3
Zghorta	Cases
Zghorta	10
Rasheen	1
Majdlayya	2
Ehden	1
Aintoureen	1
Meryata	3
Others	4
Batroun	Cases
Thoum	1
Heri	1
Akkar	Cases
Akkar El Atika	1
Bebnin	1
Jdeidet l Qaytaa	1
Fneidek	2
Majdala	2
Freides	1
Menjez	1
Qbayyat	2
Others	1
Keserwan	Cases
Zouk Mekhael	1
Ghadir	1
Zouk Mosbeh	1
Ajaltoun	1
Ghazir	1
Hrajel	2
Bcharre	Cases
Bcharre	1
Menyh Duniyeh	Cases
Deir Aamar	1
Menyeh	13
Bahsa	1
Qatteen	1
Bqarsouna	1
Hakl El Azeeme	1
Beit El Faqs	1
Azki	1
Deir Nabbouh	1
Bakhoun	1
Kfar Bebnin	9

Nabateih	Cases
Roumine	1
Houmine El Tahta	1
Deir El Zahrani	2
Harouf	1
Adsheet El Shkeef	1
Aabba	1

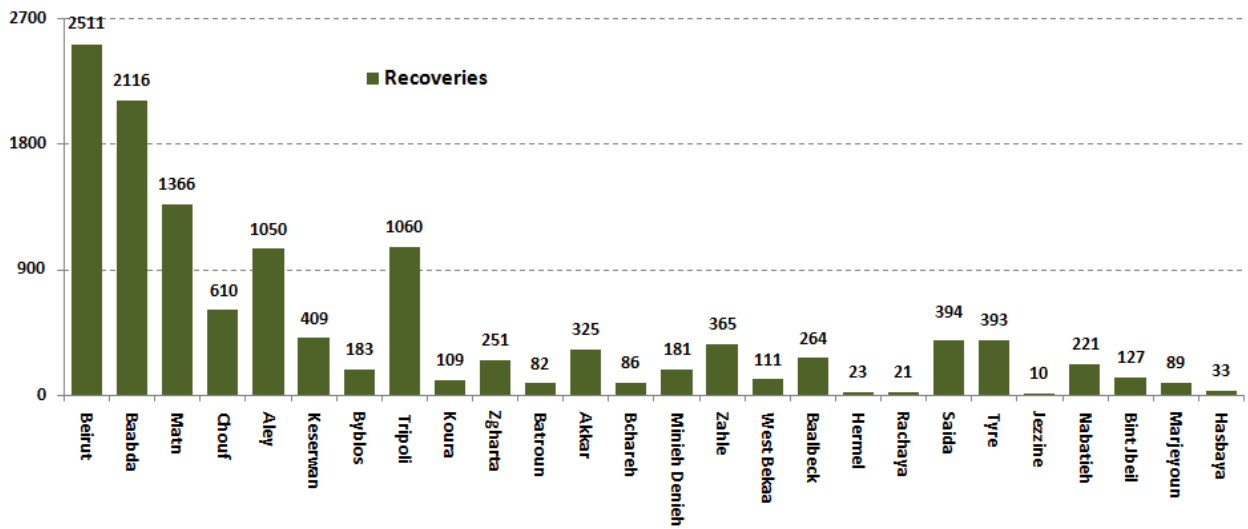
Bnt Jbeil	Cases
Tebnin	1
Shakra	2
Haddatha	2
Yater	1
Hasbayya	
Hasbayya	1



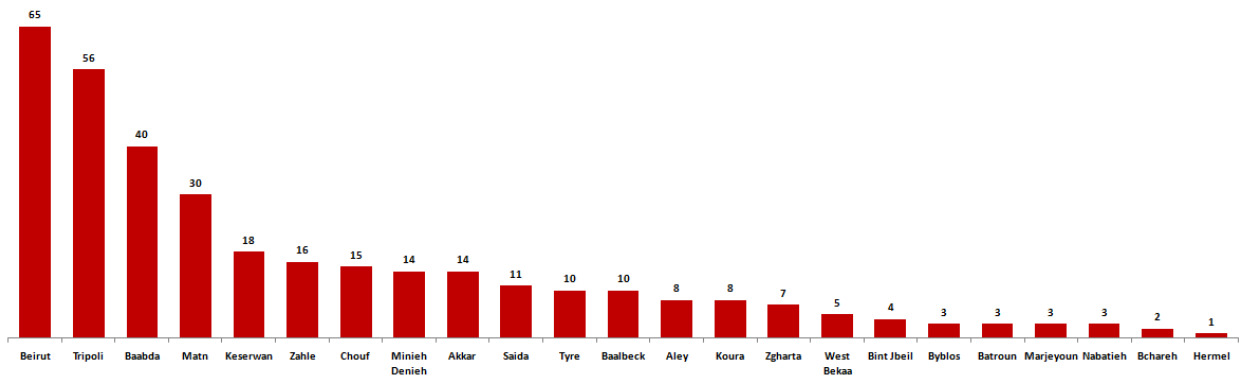
The percentage of positive cases out of the number of daily checks (14 September to 27 September 2020)



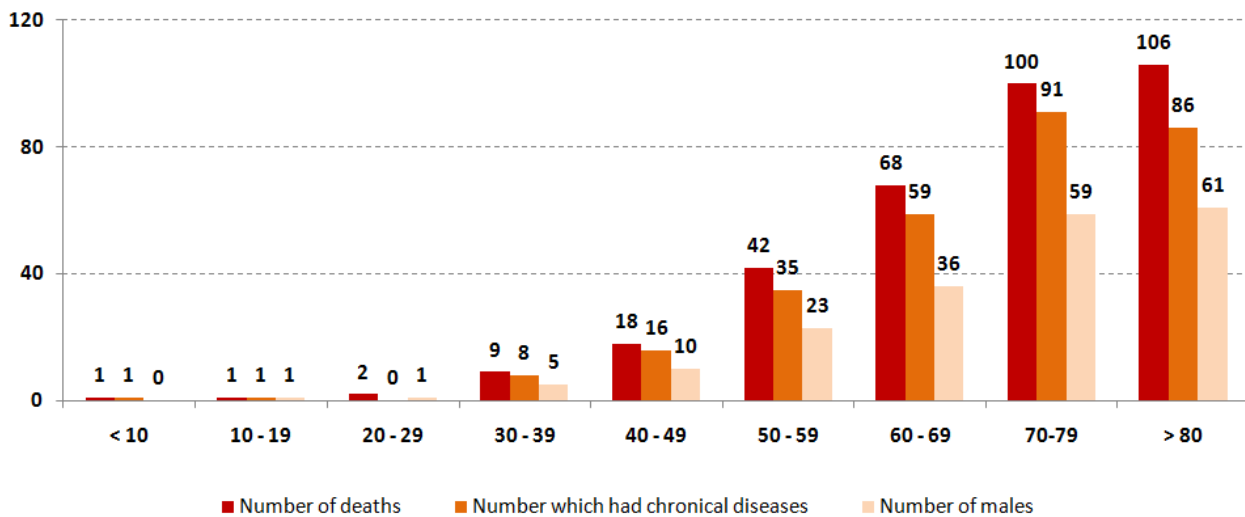
Recoveries



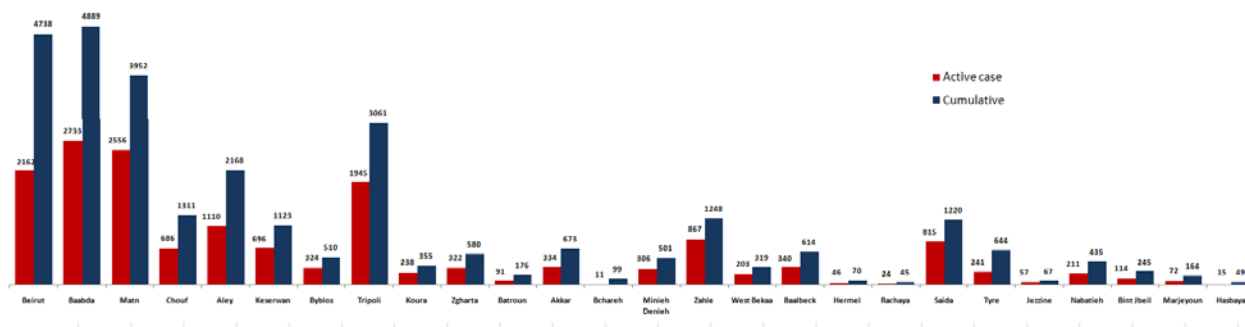
Distribution of deaths by Governorates



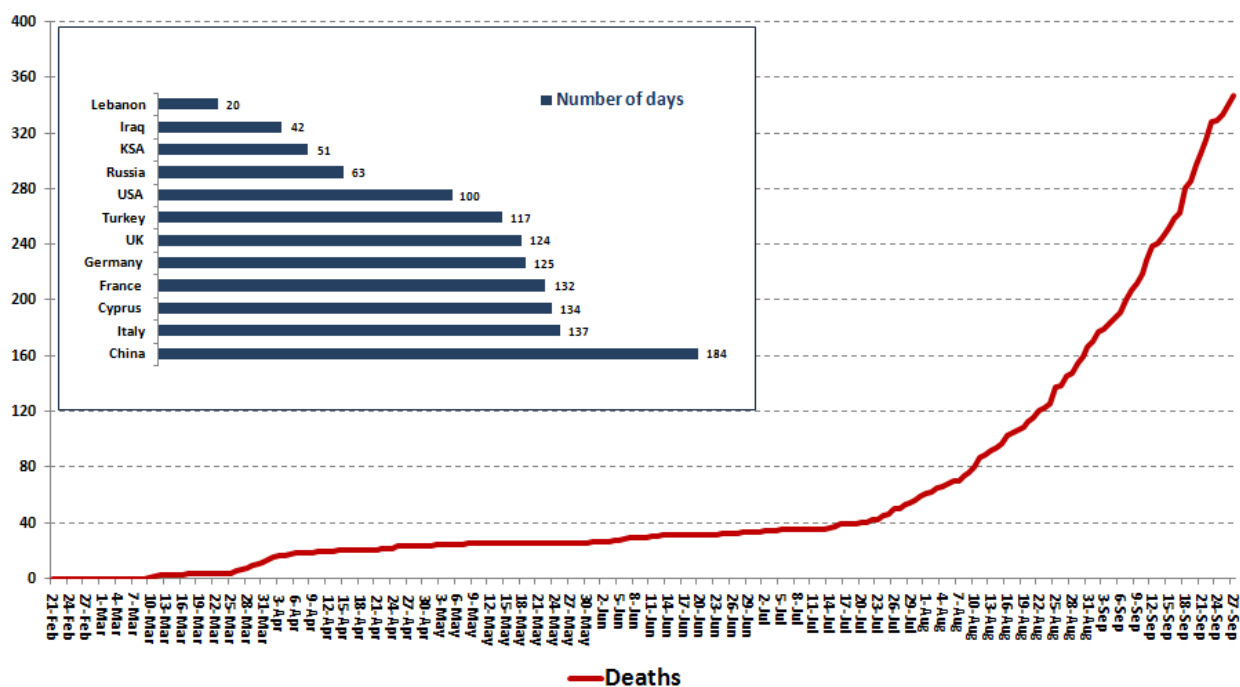
Distribution of deaths by Age



Distribution of Active Cases by Districts



Comparison of the rate of doubling of the number of deaths in Lebanon with other countries (death doubling rate)

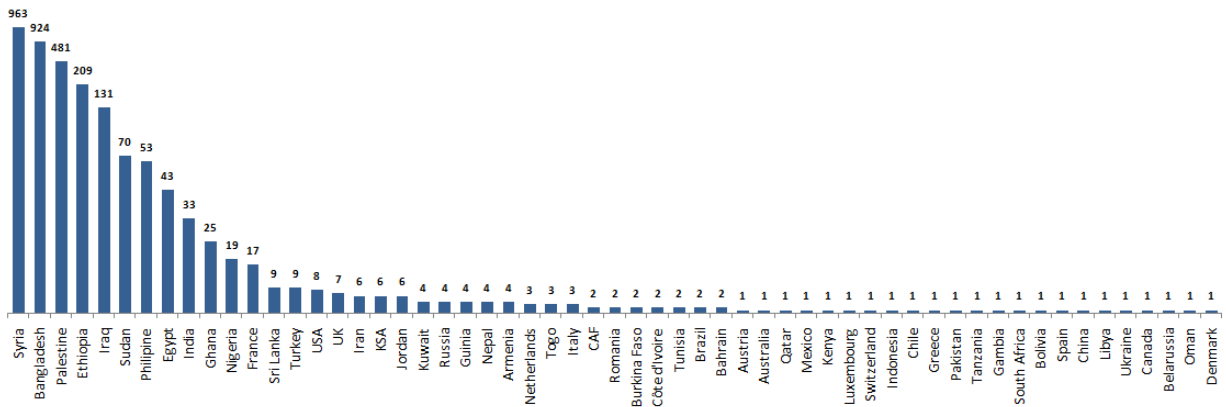


The distribution of the recorded deaths during the past 24 hours

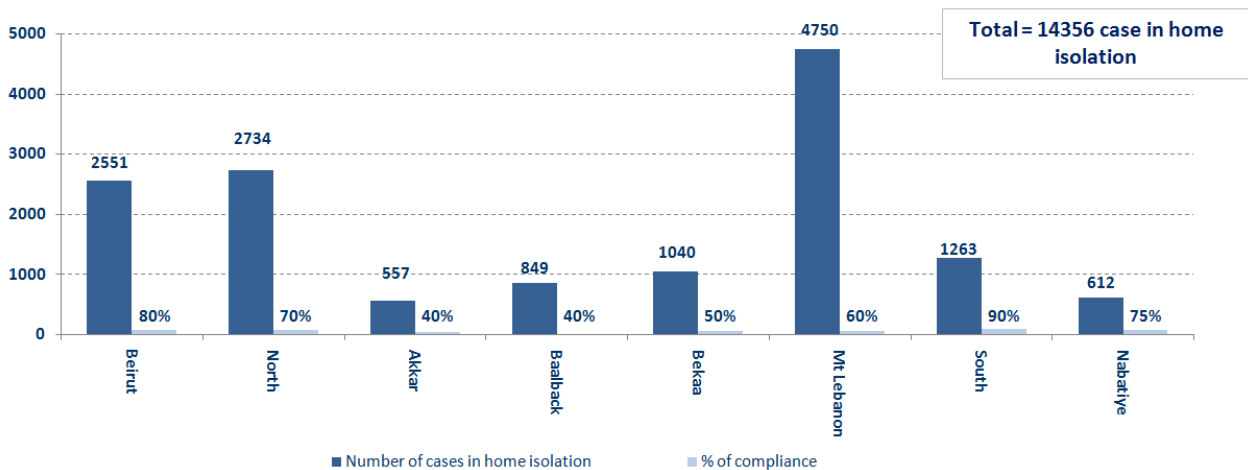
Hospital	Residence	Gender	Age	Chronic
El Rasi	Akkar	Male	66	
Ftough Keserwan	Maten	Male	65	Yes
Ftough Keserwan	Bchareh	Female	78	
Haykal	Koura	Male	70	Yes
Makased	Beirut	Male	70	No
Ain w Zein	Hasbaya	Male	61	Yes
AUBMC	Beirut	Male	82	Yes

Distribution of cases by nationality

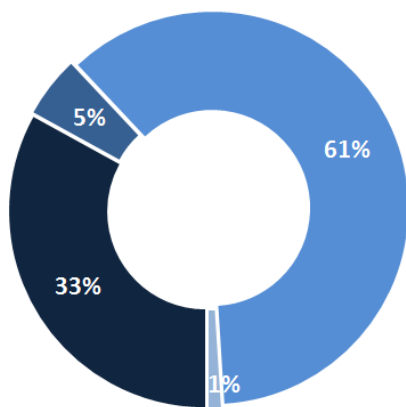
Lebanese : 33152 cases out of 36240 (88%)



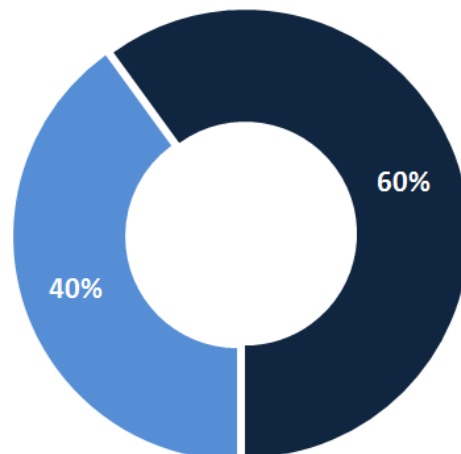
Number of individuals in home isolation and percentage of commitment to isolation



Exposure



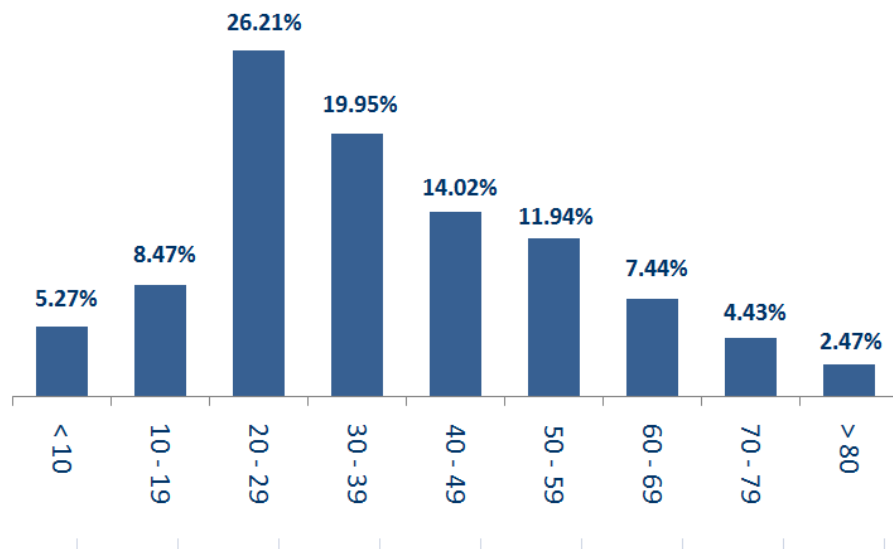
Distribution according to gender



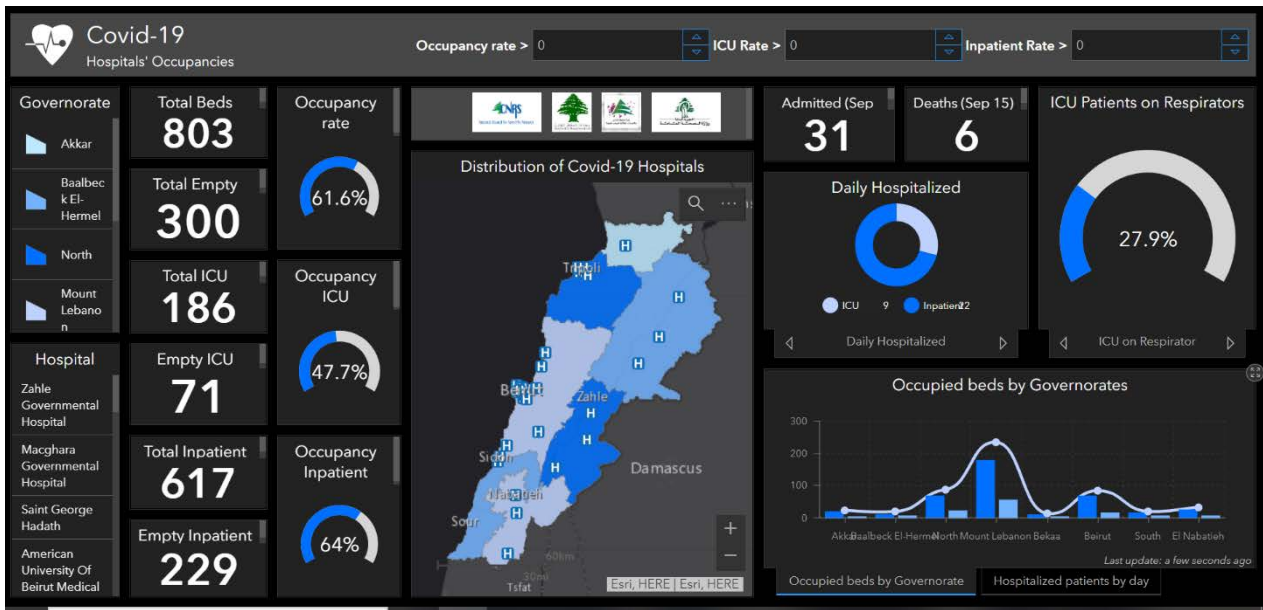
■ Contact with confirmed case ■ Travel related ■ Under investigation ■ Unidentified source

■ Female ■ Male

Distribution by age



The number of beds available for those infected with Coronavirus and the occupancy rate



For daily information on all the details of the bed distribution available for Covid-19 patients in the various governorates according to the hospitals

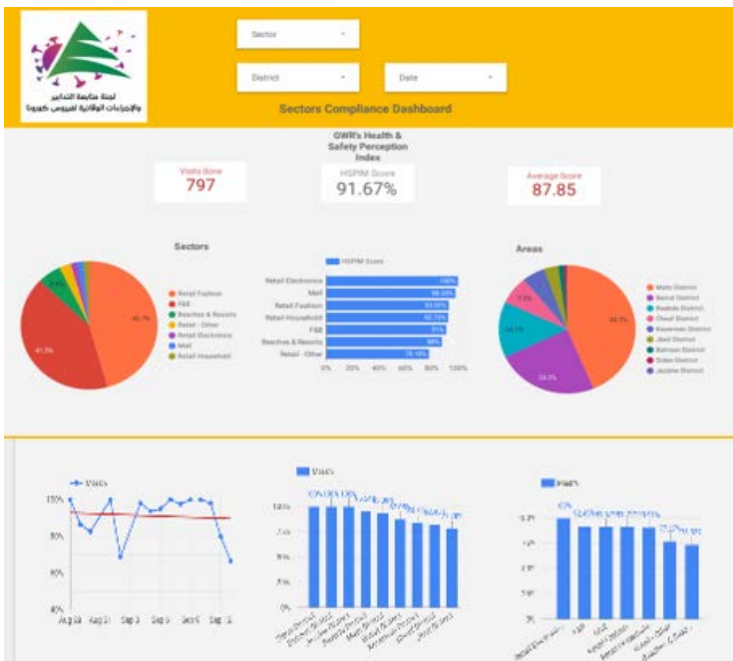
- Computer: <https://gisleb.cnrs.edu.lb/portal/apps/opsdashboard/index.html#/34b32db8030d4f229fc5db9ab686cca9>
- Mobile: <https://shorturl.at/cnqJ2>

Online platform to track sector commitment in general mobilization procedures

Based on the recommendation issued by the National Committee for Follow-up of Preventive Measures and Measures to Confront the Coronavirus to open all sectors, provided that the general mobilization procedure (safe distance, muzzle, and hand sterilization) be applied, a special electronic platform was created that allows monitoring and measuring the percentage of commitment by various sectors on an ongoing basis.

The detailed results can be viewed directly at the following link:

<http://bit.ly/covidsectordata>



Decisions and actions taken – 27/09/2020

Ministry of Public Health

The Ministry of Public Health issued the results of additional examinations for arrivals via Rafic Hariri International Airport on September 23 and 24, 2020, when four new cases were recorded, distributed over the following flights:

Arriving from	Company	Flight Number	Number of Positive Cases
23/9/2020			
Cairo	MEA	307	1
Istanbul	MEA	266	1
Istanbul	Turkish Airlines	826	1
4/9/2020			
Adana	PEGASUS	6700	1
			4

Lebanese Red Cross

233,758	Number of PCR tests transferred to laboratories	46,173 (56 New)	Number of additional ambulance centers ready to respond	48	ambulance centers	5,375 (44 New)	cases transferred to hospitals
166	Number of volunteers trained to transfer PCR tests	1,498	Number of trained paramedics	8,658	total number of respondents	78,611	number of those benefiting from awareness *sessions
967	The number of university volunteers trained to follow up on prevention measures in companies and institutions	291	Number of university volunteers trained to conduct awareness sessions	550	total LRC volunteers for covid19	8,537	number of trained managers for isolation centers
4,217	Number of beneficiaries from educational electronic platforms COVID-19	91,621	Number of distributed equipment	1,240,091	total distributed posters, brochures, and flyers on covid19 prevention	551	number of prisons that have been disinfected

General Directorate of State Security

- Reporting the closure of the South Lebanon Water Authority in Saray Bint Jbeil until September 28, 2020, after it was proven that the employees were injured to conduct checks for all employees and sterilize the center.
- Notification of the decision of the Mount Lebanon Governor to completely isolate the town of Aramoun in the Aley district, due to the increase in the number of injured in it.
- Reporting a violation committed by one of the students who went to the examination center in the Nabatiyeh region, despite her knowledge of the positive results of her examination, and the concerned authorities asked her to adhere to home quarantine, and it was also reported that the examination department would file a complaint against her with the Public Prosecution.
- Notification of the percentage of compliance with the general mobilization decision in the governorates, which came as follows within the past 24 hours:

Beirut	South	North	Akkar	Begaa	Nabateih	Baalbek Hermel	Mount Leb
40%	50%	65%	50%	N/A	65%	10%	30%

General Directorate of Internal Security Forces

- Supporting the municipalities in isolating the town of Aramoun (Aley), the Radisson Hotel in Ain Mreisse (Beirut) and the Golden Tulip Hotel in Hamra (Beirut)
-
- Writing arrest records against violators of the general closure decision

The number of seizure records during the past 24 hours					The total number of records that have been organized against violators of the general mobilization decisions since 03/08/2020	
Written records of violating institutions (absorptive capacity and preventive measures)				0		
Written records of persons violating the decision to wear a mask				0	Beirut	20,642
Written records of people violating the general mobilization decision (Aragil* and social distancing)				4	Mount Leb	18,813
Total				4	Beqaa	8,057
					North	6,784
Beirut	Mount Leb	Begaa	North	South	South	6,868
0	0	9	0	4	Total	61.164

Ministry of Public Works and Transportation

Departing Flights		Arriving Flights	
Number of Flights	39	Number of Flights	41
Number of Departing Individuals	4,417	Number of Arrivals	3,084

Port	Entered			Left		
	Import	Direction	#	Export	Direction	#
Beirut	Containers	Antalya	1	Containers	Lazqyeha	1
			1	Containers	Alexandaria	1
Tripoli	Chemicals	Mersein	1	Diesel	Zahrani	1
	Blank	Aaqabah	1			
Salaata				Chemicals	Italy	1
Jeyyeh	Construction Material	Greece	1			
	Fuel Oil	Sweden	1			
	6			4		

General announcements

In light of the increase in the percentage of positive cases in the examinations to more than 8%, which poses an imminent threat to public health and causes the spread of the epidemic in the educational sector, the Follow-up Committee on Preventive Measures and Procedures to Confront the Coronavirus in its meeting held today on 9/24/2020 recommended a postponement. The date of attendance education for students is for a period of 14 days, with the exception of official examinations in all its stages, provided that the departments raise the degree of commitment to the preventive measures and measures and develop a plan to identify the towns that have a high case rate and an escalating positive case rate, in order to take the necessary measures.

Note: The decisions can be found at www.drm.pcm.gov.lb

Examples of lack of adherence to safety measures

- Demand gatherings and demonstrations.
- Failure to comply with the preventive measures and procedures required in a number of stores and markets (putting on a muzzle or face mask, sterilizing hands, maintaining a safe distance).
- Non-compliance with the 50% occupancy rate in several restaurants and amusement game centers.
- Gatherings for social events.
- Failure of those in contact with confirmed cases to adhere to home isolation procedures until the results of the laboratory tests are issued.

If you feel any symptoms, call directly the hotline of the Ministry of Public Health: 1214 or 01/594459

A list of the laboratories accredited by the MoPH to conduct PCR tests

المختبرات الحكومية المؤهلة إجراء التشخيص المخبري لفيروس كورونا بطريقة الـ RT-PCR

الموقع	المختبر
بيروت	مستشفى رفيق الحريري الجامعي RHUH
حلبا	مستشفى حلبا الحكومي
طرابلس	مستشفى طرابلس الحكومي
البترون	مستشفى البترون الحكومي
كسروان	مستشفى فتوح كسروان الحكومي (البوار)
البيقنة	مستشفى نبيه بري الحكومي الجامعي
تبنين	مستشفى تبنين الحكومي
بنت جبيل	مستشفى بنت جبيل الحكومي
بعلبك	مستشفى بعلبك الحكومي
زحلة	مستشفى الرئيس الياز اليراي الحكومي

المختبرات الخاصة المؤهلة إجراء التشخيص المخبري لفيروس كورونا بطريقة الـ RT-PCR

الموقع	المختبر
بيروت	مستشفى الجامعة الأميركية AUBMC
بيروت	مستشفى أوتيل ديو الجامعي (HDF) Hotel-Dieu de France
بيروت	مختبرات رودولف ميرييو (الجامعة اليسوعية - المتحف) Laboratoire Rodolphe Mérieux (Université Saint-Joseph)
بيروت	مستشفى القديس جاورجيوس الجامعي Saint-George Hospital - UMC
بيروت	مستشفى المقاصد Makassed General Hospital
بيروت	مستشفى رزق الجامعي LAU Medical Center - Rizk Hospital
بيروت	مستشفى اللبناني الجعيتاوي الجامعي Hôpital Libanais Geitawi - CHU
بيروت	مستشفى الوردية Hôpital Notre-Dame du Rosaire
بيروت	مختبر مركز الأطباء Doctor 's Center
بيروت	مختبر فونتانا (الحمرا) Fontana Laboratories
بيروت	مختبر الأمن العام (العنلثة)
بيروت	مختبرات جبر وغرة Laboratoire Jabre-Ghorra
بيروت	مختبر السان مارك Saint Marc Medical & Diagnostic Center
الغبيري	المختبرات الحديثة Laboratoire Moderne (Modern Lab- Berjaoui)
الغبيري	مستشفى الساحل Sahel General Hospital (SGH)
الغبيري	مستشفى الزهراء الجامعي
برج الزاينة	مستشفى الرسول الأعظم Al Zahraa Hospital - UMC
حارة حريك	مستشفى بهمن Al Rassoul Al Aazam Hospital Bahman Hospital
حارة حريك	مختبر ناتيونال دياغنوستك سرفيس كومباني National Diagnostic Services Company (NDSC)
المرجعة	مختبر الدكتور محمود عثمان - مركز التحاليل الطبية Medical Diagnostic Center
الجناح	مختبر أميركن دياغنوستك سنتر American Diagnostic Center (ADC)
بعنا	مستشفى جبل لبنان Mount Lebanon Hospital
بعنا	مستشفى السان جورج الحدث Hôpital Saint-George – Hadath
بعنا	مختبر الهادي Al Hadi Laboratory
بعنا	مختبر INOVIE-Liban

Hôpital du Sacré- Coeur	مستشفى قلب يسوع	الحازمية
Clinigene	مختبر كلينيجان	الحازمية
Hôpital Dr.Samir Serhal	مستشفى سرحال	المن
Transmedical for Life	مختبر ترانسميديكال فور ليف	المن
Haroun Hospital	مستشفى هارون	الزلفا
Bellevue Medical Center (BMC)	مستشفى بلفو	المنصورة
Hôpital Albert Haykal	مستشفى هيكال	الكورة
Centre Hospitalier du Nord (CHN)	مركز الشمال الإستشفائي	زغرتا
Mazloum Hospital	مستشفى المظلوم	طرابلس
Al Mounla Hospital	مستشفى المنلا	طرابلس
Nini Hospital	مستشفى النيني	طرابلس
LMSE - المعهد العالي للدكتوراه، الجامعة اللبنانية	مختبر ميكروبيولوجيا الصحة والبيئة	طرابلس
CHU - Notre-Dame des Secours	مستشفى سيدة المعونات الجامعي	جبل
Lab Akiki & Boulos	مختبر عقيقي وبولس	جبل
Centre Médical Wakim	مختبر ولكيم	حولية
Ain Wazein Hospital	مستشفى عين وزين	الشوف
Hammoud Hospital UMC	مستشفى حمود الجامعي	صيدا
Al Karim Medical Laboratory (KML)	مختبر الكريم	صيدا
Sheikh Ragheb Harb Hospital	مستشفى الشيخ راجب حرب	البيشة
Sabbah Diagnostic Center (SDC)	مختبر الصباح	البيشة
Jabal Amel Hospital	مستشفى جبل عامل	صور
Mashrek Diagnostic Center (MDC)	مختبر المشرق	صور
Dar Al Amal University Hospital	مستشفى دار الأمل الجامعي	بعلبك
Khoury General Hospital	مستشفى خوري	زحلة
Medical Care Center (MCC)	مختبر ميديكال كير سنتر	زحلة

مختبرات المستشفيات العسكرية

Hôpital Militaire Central	المستشفى العسكري المركزي في بيروت	بيروت
---------------------------	-----------------------------------	-------

المختبرات المؤهلة لأخذ عينات "المسحات الأنفية" بطريقة Drive- thru

Medical Diagnostic Treatment Center (MDTC)	مختبر ميديكال دياغنوستيك تريتمانت سنتر (الحمراء)	بيروت
MedLab SAL CIC ALS	مختبر ميد لاب (الحمراء - الجفيلور)	بيروت
Itani Medical Laboratories	مختبرات عيتاني (المزرعة)	بيروت
ABC Laboratories	مختبر أ ب سي	الأشرفية
Mouawad Medical Laboratory	مختبرات معوض الطبية	الشياح
Rihan Medical Center	مختبرات الشياح (د. فؤاد ربحان)	الشياح
Expert Lab	مختبر إكسبرت لاب	المنصورة
Life LAB	مختبر لايف لاب	بعلبك
Riyak Hospital	مستشفى الرياق	رياق