





Lebanon National Operations Room Daily Report on COVID-19

Saturday, September 26, 2020

Report #192

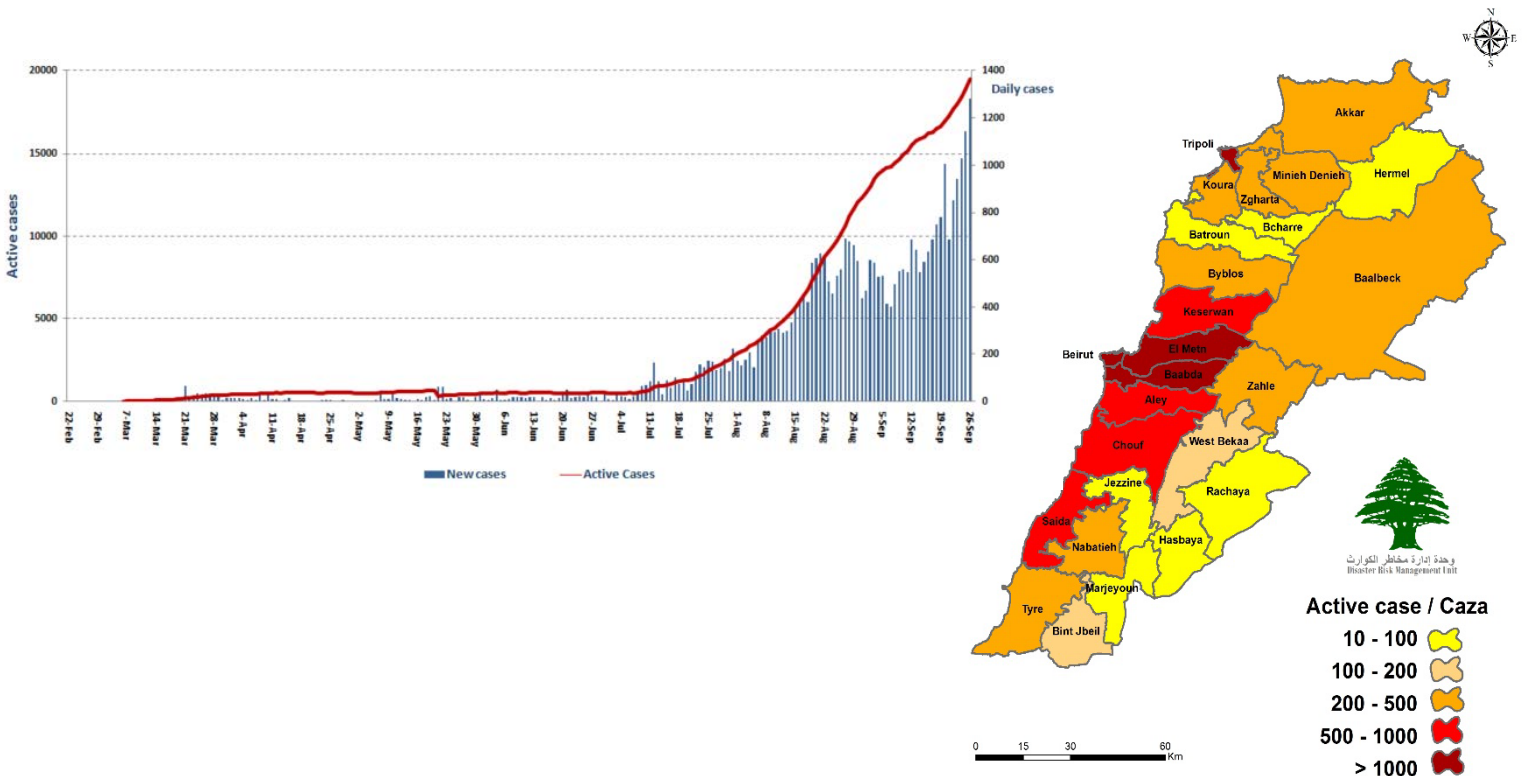
Time Published: 11:00 PM

1,280 New Cases		35,228 Total Cases since 21.2.2020		340 Total Deaths		15,434 Total Recovered	
1,279 Residents	1 Expats	33,601 Residents	1,627 Expats	7 New Deaths		666 New Recovered	
949 Total Cases in the Health Sector		19,454 Total Active Cases		496 Hospitalized Cases		152 Total Cases in ICU	
22 New Cases in the Health Sector		18,958 Cases in Home Isolation		344 Mild Cases		1 New Cases in ICU	
754,053 COVID-19 Tests since 21.2.2020		Lebanon Status compared to the World					
720 COVID-19 Tests at Airport within 24 hrs.		10,455 COVID-19 tests for residents within 24 hrs.		Total Cumulative		35,228	
				Total Deaths		340	
				Deaths percentage		0,96%	
				Total recoveries		15,434	
						32,920,650	
						996,100	
						3,02 %	
						24,310,051	

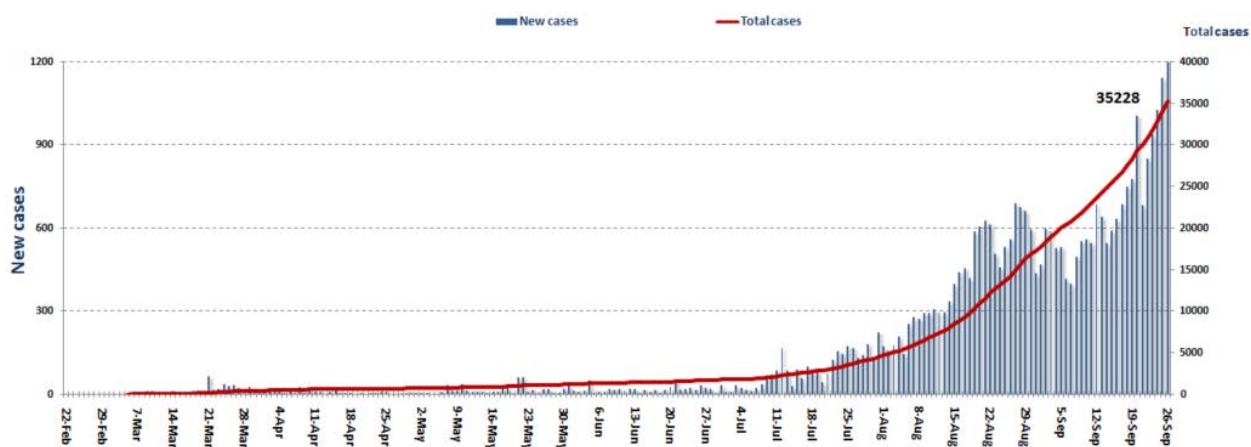
*The Above data was last updated at 10:00 PM

Number of Cases by Location

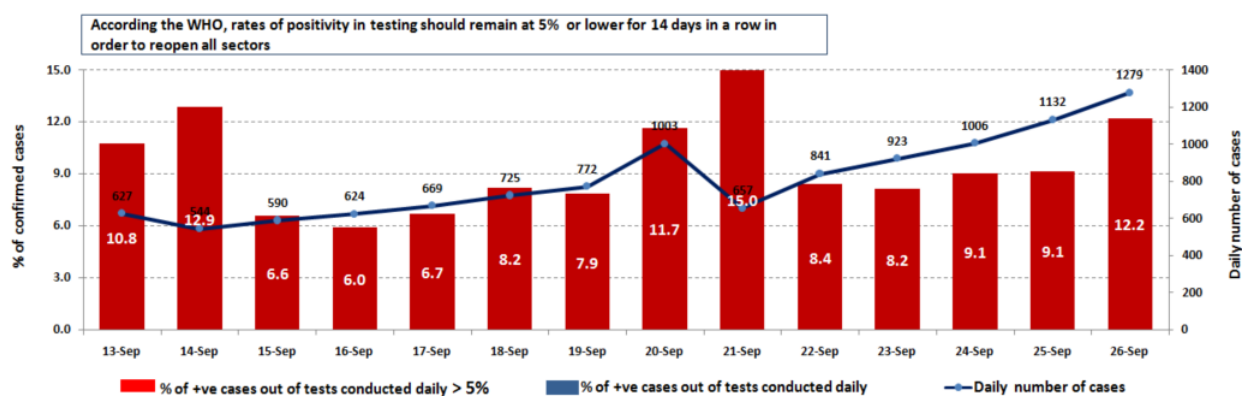
- 6,731 case is Under investigation



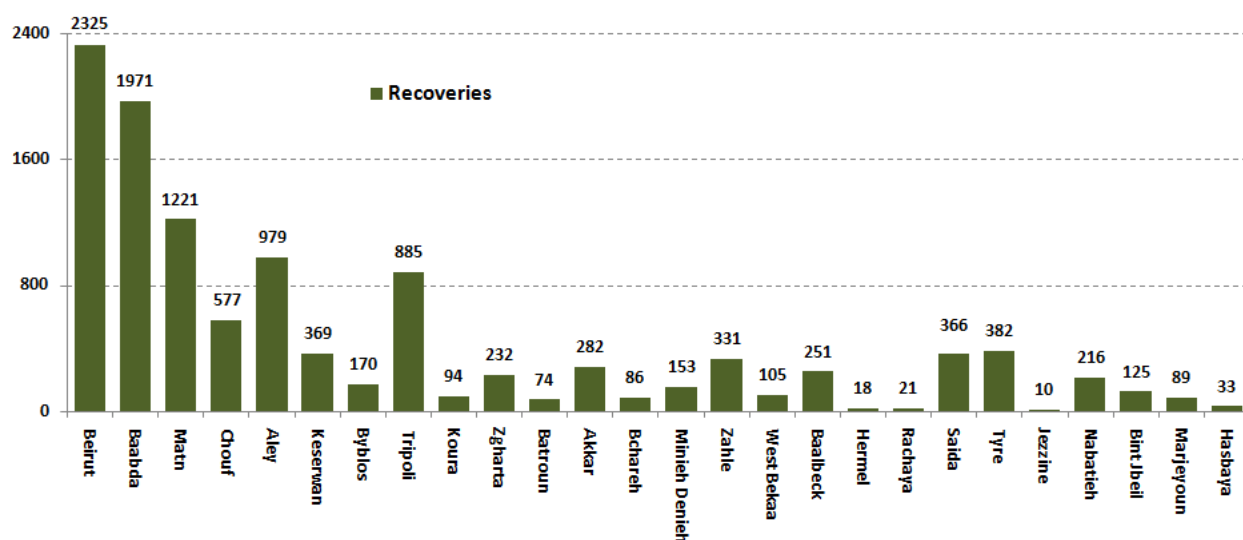
Cases per day



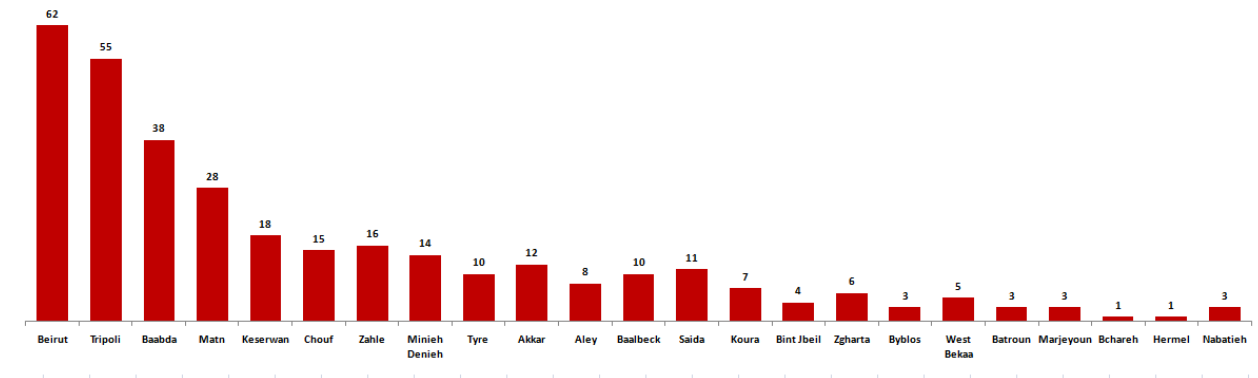
The percentage of positive cases out of the number of daily checks (13 September to 26 September 2020)



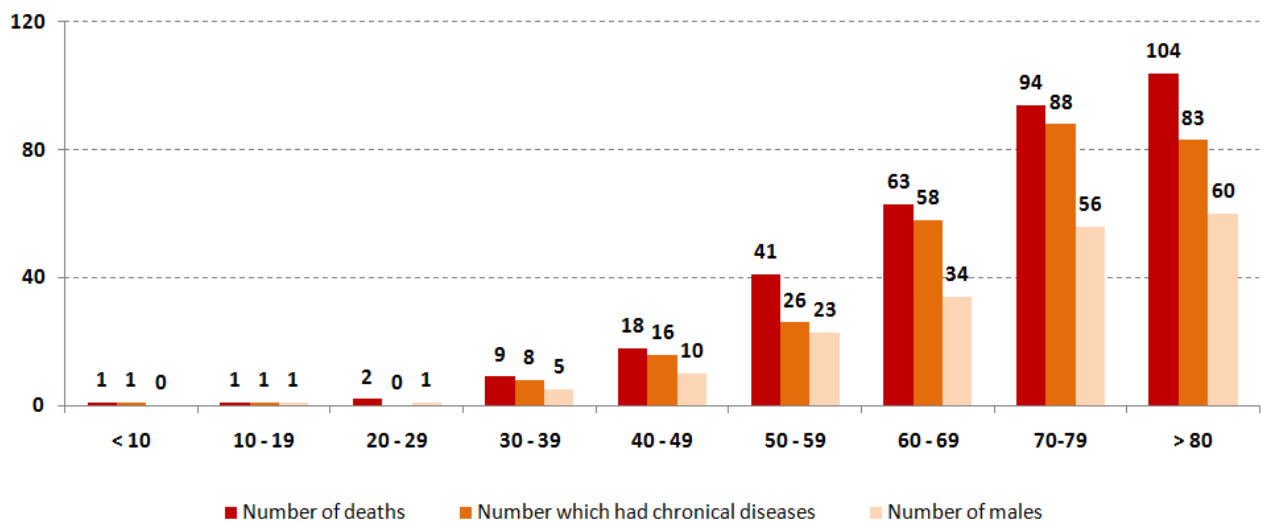
Recoveries



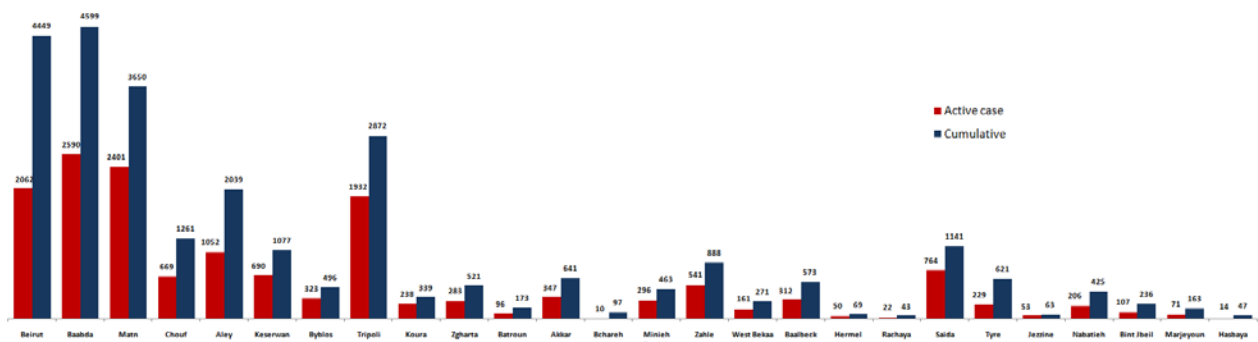
Distribution of deaths by Governorates



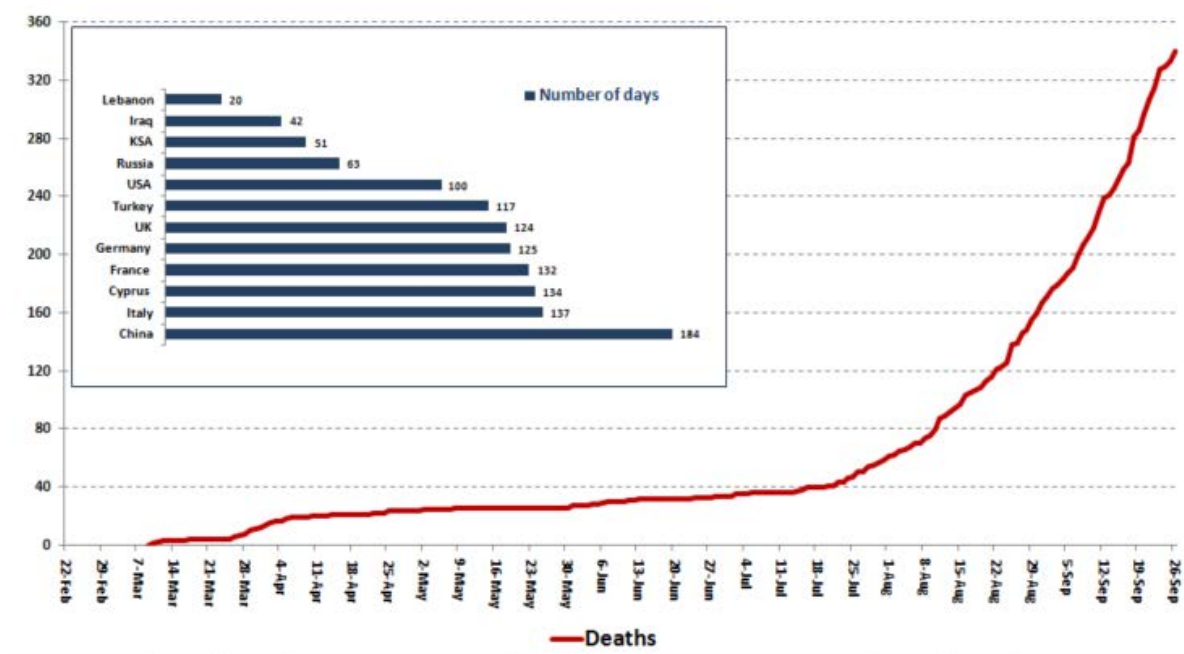
Distribution of deaths by Age



Distribution of Active Cases by Districts



Comparison of the rate of doubling of the number of deaths in Lebanon with other countries (death doubling rate)

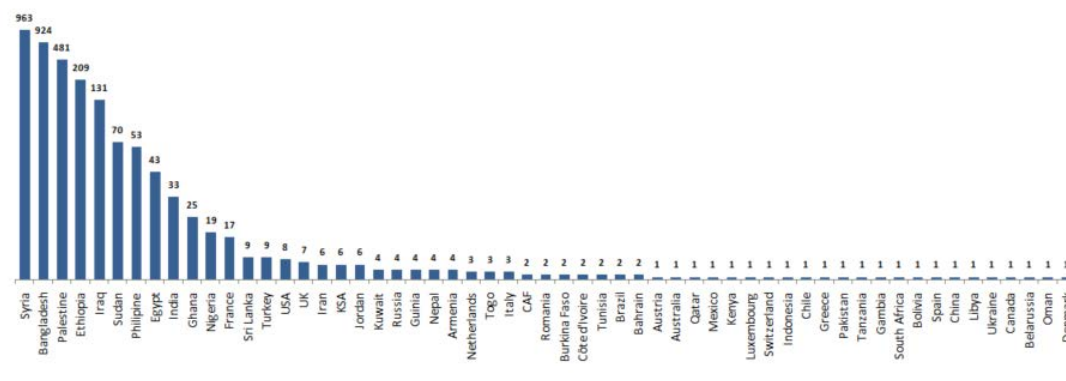


The distribution of the recorded deaths during the past 24 hours

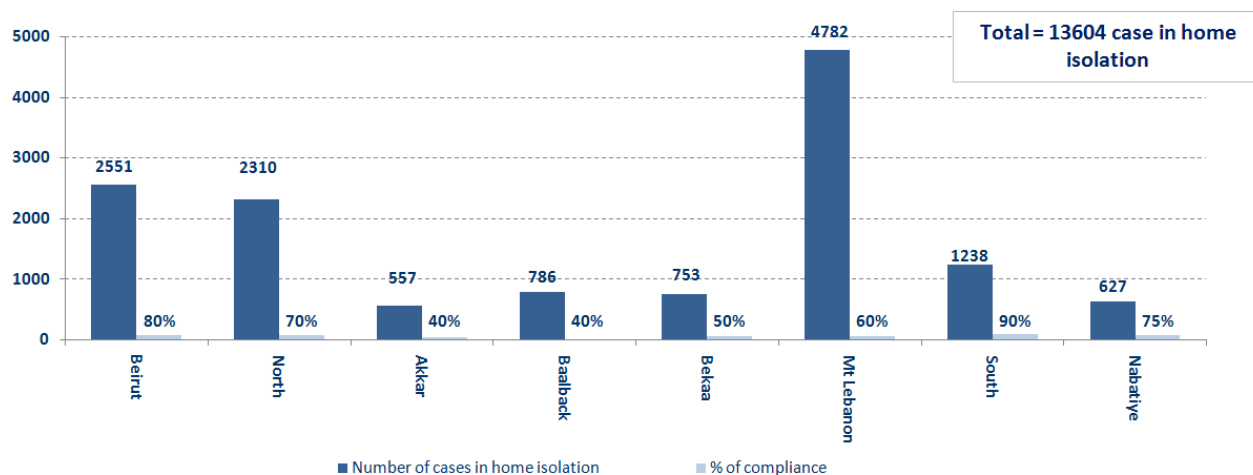
Hospital	Residence	Gender	Age	Chronic
Tripoli Gov.	Tripoli	Male	76	Yes
Ain w Zain	Chouf	Male	88	No
Mounla	Akkar	Female	84	Yes
Mounla	Tripoli	Female	75	Yes

Distribution of cases by nationality

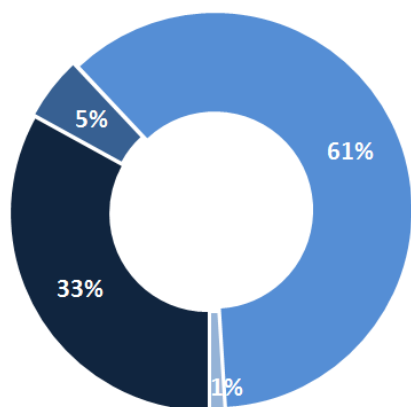
Lebanese : 32140 cases out of 35228 (88%)



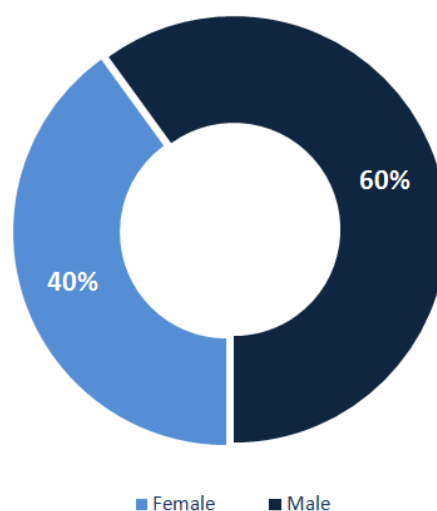
Number of individuals in home isolation and percentage of commitment to isolation



Exposure

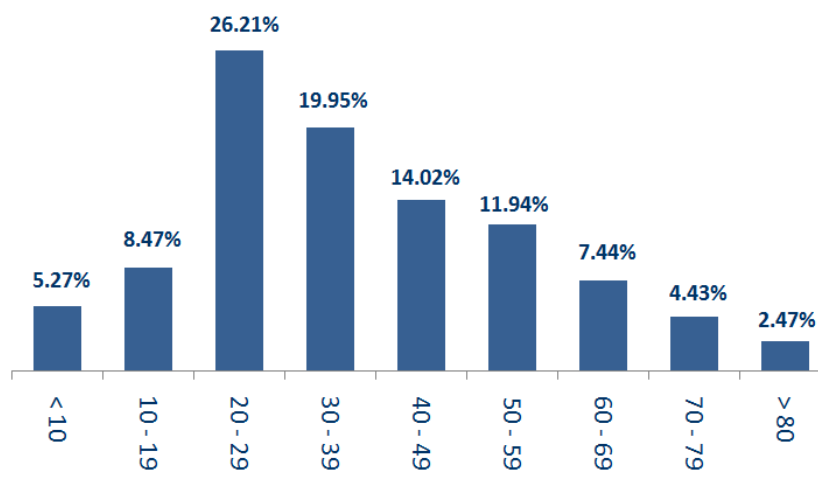


Distribution according to gender



■ Contact with confirmed case ■ Travel related ■ Under investigation ■ Unidentified source

Distribution by age



The number of beds available for those infected with Coronavirus and the occupancy rate



For daily information on all the details of the bed distribution available for Covid-19 patients in the various governorates according to the hospitals

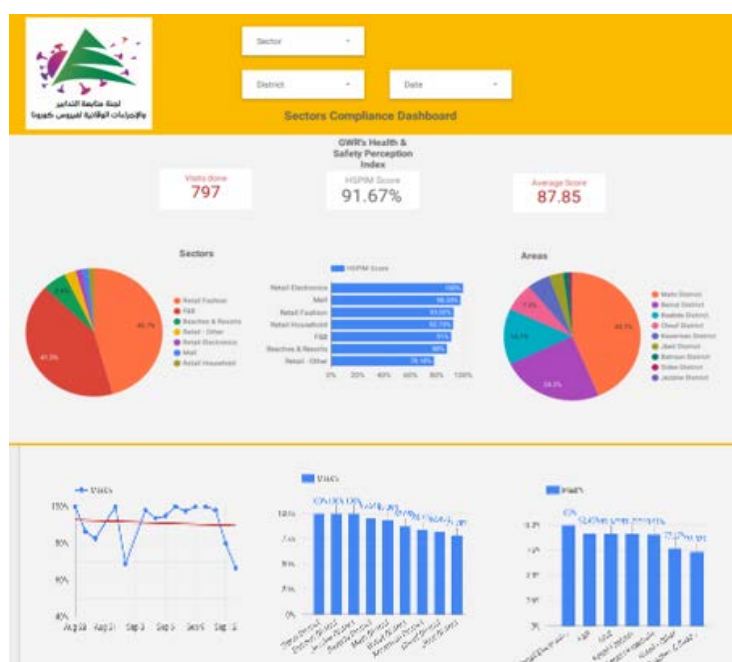
- Computer: <https://gisleb.cnrs.edu.lb/portal/apps/opstdashboard/index.html#/34b32db8030d4f229fc5db9ab686cca9>
- Mobile: <https://shorturl.at/cnqJ2>

Online platform to track sector commitment in general mobilization procedures

Based on the recommendation issued by the National Committee for Follow-up of Preventive Measures and Measures to Confront the Coronavirus to open all sectors, provided that the general mobilization procedure (safe distance, muzzle, and hand sterilization) be applied, a special electronic platform was created that allows monitoring and measuring the percentage of commitment by various sectors on an ongoing basis.

The detailed results can be viewed directly at the following link:

<http://bit.ly/covidsectordata>



Decisions and actions taken – 26/09/2020

Ministry of Public Health

The Ministry of Public Health evaluated the procedures that were followed at the airport during the last three months with the General Directorate of Civil Aviation at the Ministry of Public Works and Transport and the Middle East Airlines, as more than 300,000 arrivals to Lebanon were received, and gaps and proposals were identified to fill them by working on Securing additional teams of volunteers to assist employees and researching the adoption of a new mechanism for checks at the airport to determine the possibility of arriving arrivals with the virus.

Medical teams in the Ministry of Public Health are following up campaigns to conduct tests for contacts in various Lebanese regions, in cooperation with the municipalities and relevant agencies, in order to determine the epidemiological reality and take appropriate decisions and measures.

The results of the first batch of PCR tests for flights that arrived in Beirut and were conducted at the airport on 9/21/2020 and 9/22/2020 were issued by the Ministry of Public Health, in addition to the first batch of PCR examinations for flights that arrived in Beirut on 9/23/2020; The results showed that there were nine (9) positive cases, which were distributed over the following flights:

Lebanese Red Cross

233,758 (100 New)	Number of PCR tests transferred to laboratories	46,081 (438 New)	Number of additional ambulance centers ready to respond	48	ambulance centers	5,331 (56 New)	cases transferred to hospitals
166	Number of volunteers trained to transfer PCR tests	1,498	Number of trained paramedics	8,688 (30 New)	total number of respondents	78,611 (388 New)	number of those benefiting from awareness *sessions
967	The number of university volunteers trained to follow up on prevention measures in companies and institutions	291	Number of university volunteers trained to conduct awareness sessions	550	total LRC volunteers for covid19	8,537	number of trained managers for isolation centers
4,217 (1 New)	Number of beneficiaries from educational electronic platforms COVID-19	91,621 (41 New)	Number of distributed equipment	1,240,091	total distributed posters, brochures, and flyers on covid19 prevention	551 (8 New)	number of prisons that have been disinfected

General Directorate of State Security

- Reporting the closure of the South Lebanon Water Authority in Saray Bint Jbeil until September 28, 2020, after it was proven that the employees were injured to conduct checks for all employees and sterilize the center.
- Notification of the decision of the Mount Lebanon Governor to completely isolate the town of Aramoun in the Aley district, due to the increase in the number of injured in it.
- Reporting a violation committed by one of the students who went to the examination center in the Nabatiyeh region, despite her knowledge of the positive results of her examination, and the concerned authorities asked her to adhere to home quarantine, and it was also reported that the examination department would file a complaint against her with the Public Prosecution.
- Notification of the percentage of compliance with the general mobilization decision in the governorates, which came as follows within the past 24 hours:

Beirut	South	North	Akkar	Begaa	Nabateih	Baalbek Hermel	Mount Leb
50%	50%	60%	45%	N/A	65%	10%	30%

General Directorate of Internal Security Forces

- Supporting the municipalities in isolating the town of Aramoun (Aley), the Radisson Hotel in Ain Mreisse (Beirut) and the Golden Tulip Hotel in Hamra (Beirut)
-
- Writing arrest records against violators of the general closure decision

The number of seizure records during the past 24 hours					The total number of records that have been organized against violators of the general mobilization decisions since 03/08/2020	
Written records of violating institutions (absorptive capacity and preventive measures)				0		
Written records of persons violating the decision to wear a mask				0	Beirut	20,642
Written records of people violating the general mobilization decision (Aragil* and social distancing)				30	Mount Leb	18,813
Total				30	Beqaa	8,057
					North	6,784
Beirut	Mount Leb	Beqaa	North	South	South	6,864
0	0	1	0	19	Total	61.160

Ministry of Public Works and Transportation

Departing Flights		Arriving Flights	
Number of Flights	41	Number of Flights	41
Number of Departing Individuals	4,676	Number of Arrivals	3,643

Port	Entered			Left		
	Import	Direction	#	Export	Direction	#
Beirut	Containers	Limasoul	1	Containers	Alexandrun	1
	Cattle	Targhoun	1	Containers	Alexandaria	1
	Containers	Valencia	1	Blank	Italy	1
Saida	Metals	Libya	1			
Zahrani	Oil Gas	Turkey	1			
			5			
						3

General announcements

In light of the increase in the percentage of positive cases in the examinations to more than 8%, which poses an imminent threat to public health and causes the spread of the epidemic in the educational sector, the Follow-up Committee on Preventive Measures and Procedures to Confront the Coronavirus in its meeting held today on 9/24/2020 recommended a postponement. The date of attendance education for students is for a period of 14 days, with the exception of official examinations in all its stages, provided that the departments raise the degree of commitment to the preventive measures and measures and develop a plan to identify the towns that have a high case rate and an escalating positive case rate, in order to take the necessary measures.

The Ministry of Education and Higher Education issued Decision No. 440 / M / 2020 on September 25, 2020 regarding the postponement of the initiation of teaching in secondary schools and public and private schools based on the recommendations issued by the Committee for Follow-up of Preventive Measures and Measures to Confront the Coronavirus, as the date of 10/12/2020. A date for the start of teaching, provided that the registration of students in official schools and high schools continues until 10/10/2020 inclusive, and according to the decision, directors were requested to organize the rotation for teachers and members of the educational and administrative staff.

The Ministry of Foreign Affairs and Expatriates issued a circular to all Lebanese missions abroad on September 21, 2020, which includes the general conditions for coming to Lebanon, based on the recommendations of the Committee for Follow-up of Preventive Measures and Measures to Confront the Coronavirus. The Ministry also circulated to foreign embassies in Lebanon and Lebanese missions abroad the circular issued by the General Directorate of Civil Aviation at the Ministry of Public Works and Transport about procedures related to all arrivals to Lebanon, starting from September 23, 2020. The Ministry also follows up with the embassies the situation of the Lebanese in facing the virus abroad, In addition to coordinating with foreign embassies regarding the aid that comes to Lebanon to face the crisis.

Note: The decisions can be found at www.drm.pcm.gov.lb

Examples of lack of adherence to safety measures

- Demand gatherings and demonstrations.
- Failure to comply with the preventive measures and procedures required in a number of stores and markets (putting on a muzzle or face mask, sterilizing hands, maintaining a safe distance).
- Non-compliance with the 50% occupancy rate in several restaurants and amusement game centers.
- Gatherings for social events.
- Failure of those in contact with confirmed cases to adhere to home isolation procedures until the results of the laboratory tests are issued.

If you feel any symptoms, call directly the hotline of the Ministry of Public Health: 1214 or 01/594459

A list of the laboratories accredited by the MoPH to conduct PCR tests

المختبرات الحكومية المؤهلة لإجراء التشخيص المخبري لفيروس كورونا بطريقة الـ RT-PCR

الموقع	المختبر
بيروت	مستشفى رفيق الحريري الجامعي RHUH
حلبا	مستشفى حلبا الحكومي
طرابلس	مستشفى طرابلس الحكومي
البترون	مستشفى البترون الحكومي
كسروان	مستشفى فتوح كسروان الحكومي (البوار)
البيقطة	مستشفى نبيه بري الحكومي الجامعي
تبنين	مستشفى تبنين الحكومي
بنت جبيل	مستشفى بنت جبيل الحكومي
بعلبك	مستشفى بعلبك الحكومي
زحلة	مستشفى الرئيس الياز اليراي الحكومي

المختبرات الخاصة المؤهلة لإجراء التشخيص المخبري لفيروس كورونا بطريقة الـ RT-PCR

الموقع	المختبر
بيروت	مستشفى الجامعة الأميركية AUBMC
بيروت	مستشفى أوتيل ديو الجامعي (HDF) Hotel-Dieu de France
بيروت	مختبرات رودولف ميرييو (الجامعة اليسوعية - المتحف) Laboratoire Rodolphe Mérieux (Université Saint-Joseph)
بيروت	مستشفى القديس جاورجيوس الجامعي Saint-George Hospital - UMC
بيروت	مستشفى المقاصد Makassed General Hospital
بيروت	مستشفى رزق الجامعي LAU Medical Center - Rizk Hospital
بيروت	مستشفى اللبناني الجعيتاوي الجامعي Hôpital Libanais Geitawi - CHU
بيروت	مستشفى الوردية Hôpital Notre-Dame du Rosaire
بيروت	مختبر مركز الأطباء Doctor 's Center
بيروت	مختبر فونتانا (الحمرا) Fontana Laboratories
بيروت	مختبر الأمن العام (العنلثة)
بيروت	مختبرات جبر وغرة Laboratoire Jabre-Ghorra
بيروت	مختبر السان مارك Saint Marc Medical & Diagnostic Center
الغبيري	المختبرات الحديثة Laboratoire Moderne (Modern Lab- Berjaoui)
الغبيري	مستشفى الساحل Sahel General Hospital (SGH)
الغبيري	مستشفى الزهراء الجامعي
برج الراجنة	مستشفى الرسول الأعظم Al Zahraa Hospital - UMC
حارة حريك	مستشفى بهمن Al Rassoul Al Aazam Hospital Bahman Hospital
حارة حريك	مختبر ناتيونال دياغنوستك سرفيس كومباني National Diagnostic Services Company (NDSC)
المرجعة	مختبر الدكتور محمود عثمان - مركز التحاليل الطبية Medical Diagnostic Center
الجناح	مختبر أميركن دياغنوستك سنتر American Diagnostic Center (ADC)
بعنا	مستشفى جبل لبنان Mount Lebanon Hospital
بعنا	مستشفى السان جورج الحدث Hôpital Saint-George – Hadath
بعنا	مختبر الهادي Al Hadi Laboratory
بعنا	مختبر INOVIE-Liban

Hôpital du Sacré- Coeur	مستشفى قلب يسوع	الحازمية
Clinigene	مختبر كلينيجان	الحازمية
Hôpital Dr.Samir Serhal	مستشفى سرحال	المن
Transmedical for Life	مختبر ترانسميديكال فور ليف	المن
Haroun Hospital	مستشفى هارون	الزلفا
Bellevue Medical Center (BMC)	مستشفى بلغو	المنصورة
Hôpital Albert Haykal	مستشفى هيكال	الكورة
Centre Hospitalier du Nord (CHN)	مركز الشمال الإستشفائي	زغرتا
Mazloun Hospital	مستشفى المظلوم	طرابلس
Al Mounla Hospital	مستشفى المنلا	طرابلس
Nini Hospital	مستشفى النيني	طرابلس
LMSE - المعهد العالي للدكتوراه، الجامعة اللبنانية	مختبر ميكروبيولوجيا الصحة والبيئة	طرابلس
CHU - Notre-Dame des Secours	مستشفى سيدة المعونات الجامعي	جبل
Lab Akiki & Boulos	مختبر عقيقي وبولس	جبل
Centre Médical Wakim	مختبر ولكيم	حولية
Ain Wazein Hospital	مستشفى عين وزين	الشرف
Hammoud Hospital UMC	مستشفى حمود الجامعي	صيدا
Al Karim Medical Laboratory (KML)	مختبر الكريم	صيدا
Sheikh Ragheb Harb Hospital	مستشفى الشيخ راجب حرب	البيشة
Sabbah Diagnostic Center (SDC)	مختبر الصباح	البيشة
Jabal Amel Hospital	مستشفى جبل عامل	صور
Mashrek Diagnostic Center (MDC)	مختبر المشرق	صور
Dar Al Amal University Hospital	مستشفى دار الأمل الجامعي	بعلبك
Khoury General Hospital	مستشفى خوري	زحلة
Medical Care Center (MCC)	مختبر ميديكال كير سنتر	زحلة

مختبرات المستشفيات العسكرية

Hôpital Militaire Central	المستشفى العسكري المركزي في بيروت	بيروت
---------------------------	-----------------------------------	-------

المختبرات المؤهلة لأخذ عينات "المسحات الأنفية" بطريقة Drive- thru

Medical Diagnostic Treatment Center (MDTC)	مختبر ميديكال دياغنوستيك تريتمانت سنتر (الحمراء)	بيروت
MedLab SAL CIC ALS	مختبر ميد لاب (الحمراء - الجفيلور)	بيروت
Itani Medical Laboratories	مختبرات عيتاني (المزرعة)	بيروت
ABC Laboratories	مختبر أ ب سي	الأشرفية
Mouawad Medical Laboratory	مختبرات معوض الطبية	الشياح
Rihan Medical Center	مختبرات الشياح (د. فؤاد ريحان)	الشياح
Expert Lab	مختبر إكسبرت لاب	المنصورة
Life LAB	مختبر لايف لاب	بعلبك
Riyak Hospital	مستشفى الرياق	رياق