

Lebanon National Operations Room Daily Report on COVID-19

Monday, October 26, 2020

Report #222



Time Published: 10:30 PM

New in the report:

- Names of laboratories that did not specify the district or place of residence for a number of positive cases, which affects the tracking of cases and the identification of contacts to conduct the necessary tests.

796 New Cases		72,186 Total Cases since 21.2.2020		579 Total Deaths	35,802 Total Recovered
796 Residents	0 Expats	69,991 Residents	2,195 Expats	14 New Deaths	999 New Recovered

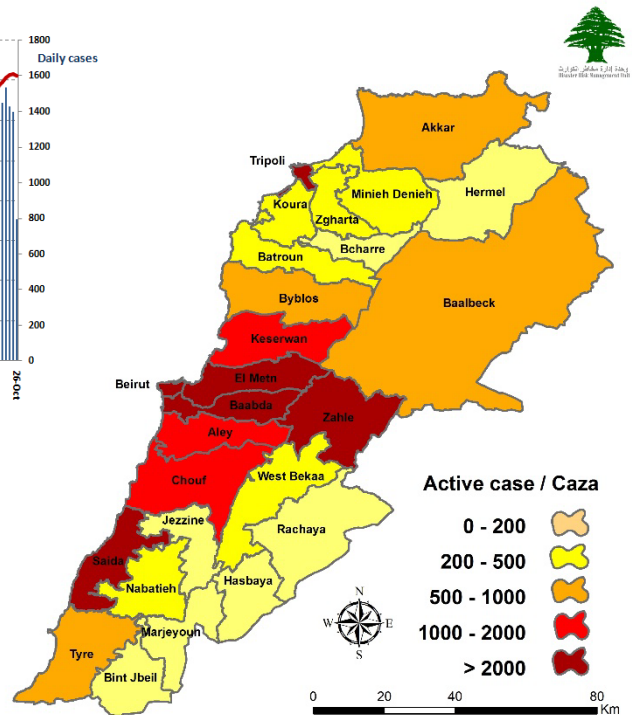
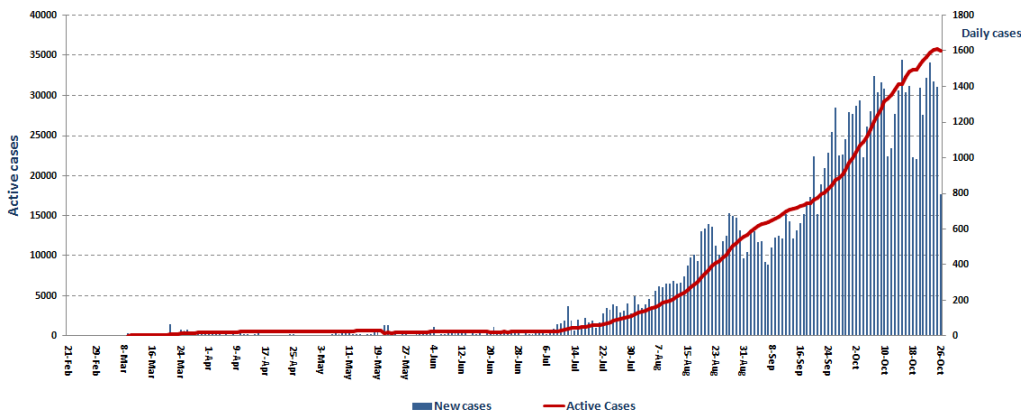
84 Deleted Status due to its recurrence	1,341 Total Cases in the Health Sector	35,805 Total Active Cases	742 Hospitalized Cases	242 Total Cases in ICU
	4 New Cases in the Health Sector	35,063 Cases in Home Isolation	500 Mild Cases	0 New Cases in ICU

1,103,707 COVID-19 Tests since 21.2.2020	Lebanon Status compared to the World			
1,147 COVID-19 Tests at Airport within 24 hrs.	3,692 COVID-19 tests for residents within 24 hrs.	Total Cumulative	72,186	43,573,148
		Total Deaths	579	1,161,918
		Deaths percentage	0,80%	2.66%
		Total recoveries	35,802	32,037,182

Ref: Ministry of Public Health Data

Number of Cases by Location

- 12,789 case is Under investigation



Beirut	70
Ras Beirut	2
Manara	1
Qoreitem	3
Hamra	4
Mseitbeh	4
Mar Elias	2
Rallet El Khayyat	2
Dar Al Fatwa	1
Tallet El Drouz	1
Zarif	1
Mazraa	9
Borj Abi Haidar	1
Tariq Jdeedeh	9
Ras Al Nabaa	4
Nejmeh	1
Ashrafieh	6
Adlieh	1
Others	18
Baabda	80
Chiah	11
Jnah	7
Bir Hassan	4
Cite Sportif	1
Ghobeiry	10
Ein El Rimmaneh	3
Forn El Shebbak	3
Haret Hreik	11
Lailaky	2
Borj Al Brajneh	5
Mreijeh	2
Tahweetet Ghadir	1
Baabda	2
Makhkhada	1
Yarzeh	1
Hadat	9
Jumhour	4
Others	3
Keserwan	32
Sarba	8
Kaslik	4
Zouk Michael	3
Ghadir	1
Zouk Mosbeh	2
Adonis	3
Haret Sakher	1
Sahel Alma	1
Bouar	1
Ein El Rihaneh	1
Aintoura	1
Ghazir	2
Aramoun	2
Hrajel	1
Others	1

Chouf	36
Naameh	2
Haret Naameh	1
Chhim	8
Dalhoun	1
Ketermaya	3
Sibline	1
Jiyyeh	2
Alman	1
Rmeileh	1
Semqaniyyeh	1
Ein Zhalta	1
Jahlieh	2
Jdeidet El Chouf	1
Ein W Zein	1
Khreibeh	1
Ammatour	1
Mazraet El Chouf	1
Kfar Nabrakh	1
Marasty	1
Btalloun	2
Barouk	1
Others	2
Tripoli	60
Haddadeen	12
Al Tal	2
Qebbeh	8
Zahrieh	1
Tabbaneh	1
Mina 1	2
Bsatine Al Mina	7
Qalamoun	1
Beddawy	1
Beddawy Camp	4
Others	21
Koura	5
Rashdebbine	1
Feeh	1
Betroumine	1
Anfeh	1
Dahr El Ein	1
Zghorta	11
Zghorta	1
Rasheen	6
Erdeh	1
Sakhra	1
Karam Saddeh	1
Seb'al	1
Akkar	14
Nahr Al Bared	3
Berqayel	2
Meshmesh	1
Fneidek	2
Qbayat	1
Others	5

Zahleh	53
Hoch Zaraaneh	2
Karak Nouh	2
Hoch Al Oumara	4
Arady	3
Mar Elias	1
Naby Ayla	1
Ksara	4
Jlala	2
Taalabaya	1
Saadnayel	2
Qab Elias	4
Bouarej	4
Bar Elias	7
Majdel Anjar	2
Riyak	7
Ali Nahry	1
Others	6
Western Beqaa	11
Kherbet Qanafar	1
Jeb Jinnine	1
Lala	3
GhazzeH	1
Qar'oun	1
Manara	1
Sweiry	1
Others	2
Baalbek	47
Baalbek	3
Sharawneh	1
Ras AL Ein	2
Doures	1
Hoch Tal Safiah	2
Arsal	5
Deir Al Ahmar	3
Bednayel	1
Qasr Nabba	3
Temnine Fawka	1
Hoch Al Rafqa	4
Tamnine Tahta	4
Kfar Dabash	1
Shmestar	1
Hoch Al Naby	1
Ser'een Al Tahta	2
Naby Sheeth	1
Brital	1
Others	10
Menyh Dunyyeh	17
Deir Amar	1
Menyeh	2
Bhannine	3
Seer Al Dunniiyeh	1
Bakh'oun	3
Others	7

Matn	142
Borj Hammoud	6
Nabaa	1
Sin El Fil	6
Jdeidet El Metn	4
Bouchrieh	1
Rawda	4
Sed El Bouchrieh	4
Sabtieh	2
Deir MA Roukoz	1
Dekwene	3
Antelias	1
Jal El Dib	1
Naqqash	1
Zalqa	1
Byaqout	1
Dbayyeh	5
Mazraet Aoukar	1
Mansourieh	2
New Fanar	1
Ein Saadeh	1
Roumieh	8
Bsalim	2
Nabayh	1
Rabwe	2
Beit Al Shaar	2
Mazraet Yashouh	1
Beit Shabab	3
Ein Alak	2
Broummana	1
Qannbt Broumna	1
Baabdat	1
Beit Mery	3
Marjaba	1
Qaaqour	1
Beit Ayal	1
Others	3
Aleyh	46
Al Amrousieh	5
Hay El Sillom	5
Al Oumara	6
Aramoun	5
Bshamoun	2
Ein Anoub	1
Aley	9
Kahale	1
Kayfoun	1
Baisour	2
Bhamdoun	2
Majdelbaana	1
Btater	2
Hanan	1
Others	3
Byblos	3
Byblos	1
Blat	1
Nahr Ibrahim	1

Saida	50
Haret Saida	4
Ein Al Helwe	8
Abra	1
Qrayyeh	1
Ghazieh	3
Qannarite	1
Kharayeb	2
Bisarieh	1
Anqoun	1
Others	28

Nabateih	7
Deir Al Zahrany	2
Harouf	2
Others	3
Bint Jbeil	7
Rmeish	1
Bar'ashit	1
Kherbet Silim	2
Kounine	1
Hanine	1
Beit Leef	1

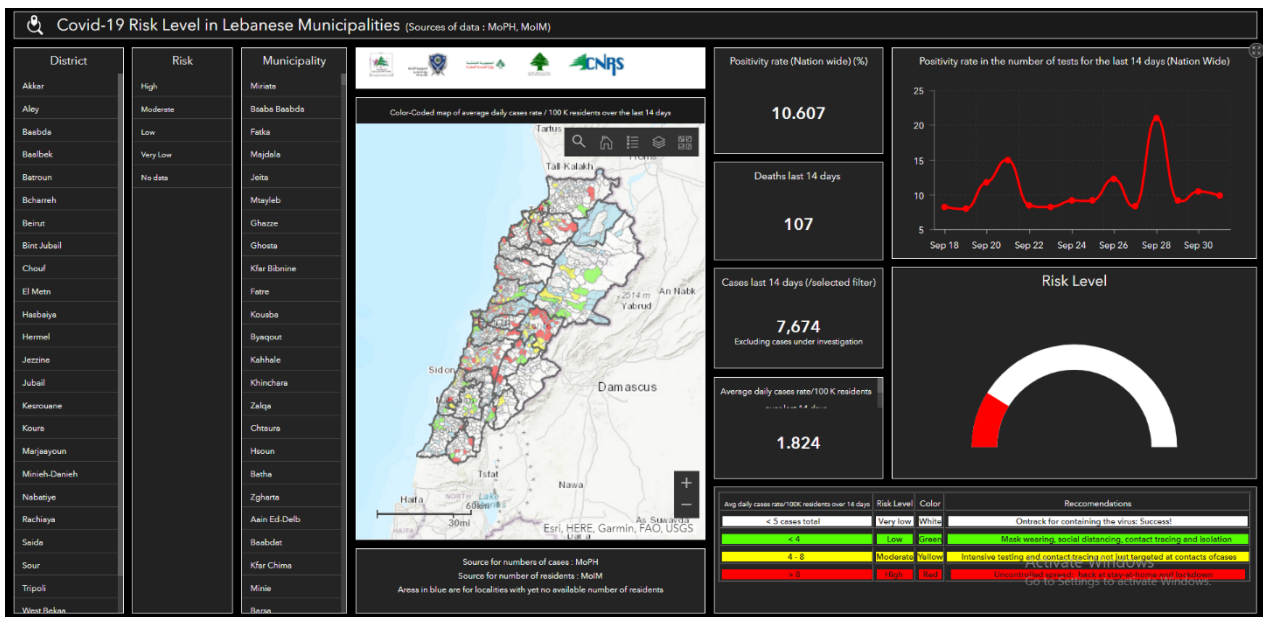
Tyre	21
Tyre	3
Maashouq	1
Borj Shemaly	5
Ein Baal	2
Bazourieh	1
Hannawayh	1
Teir Debba	1
Srifa	1
Shabriha	1
Shiheen	1
Yareen	1
Others	3

Marjeyoun	2
Taybeh	1
Touline	1
Hasbaya	2
Hasbaya	1
Others	1
Hermel	5
Dora	1
Others	4
Jezzine	1
Loueize	1

Others	136
--------	-----

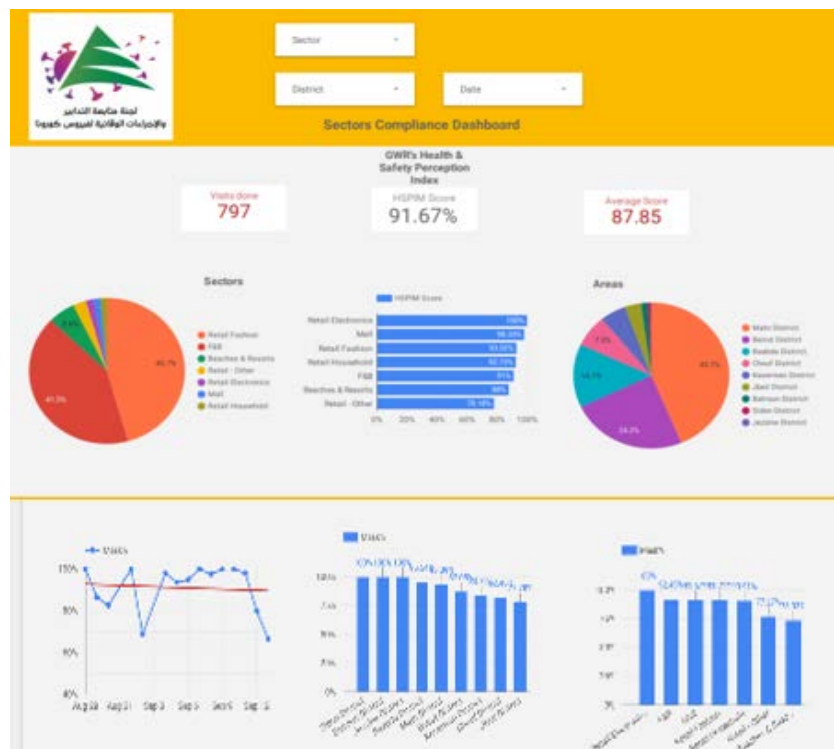
*136 Cases under verification due to the failure of several laboratories to provide the Ministry of Public Health with information about housing or the phone number of infected cases.

The Online platform to measure the level of risk of the spread of the new Corona virus



This interactive platform allows you to know the level of risk of spreading the kurna virus according to districts, based on the number of cases registered daily and the number of residents in each district. For more information on a daily basis, you can access the following link: <https://bit.ly/DRM-RiskLevelInMunicipalities>

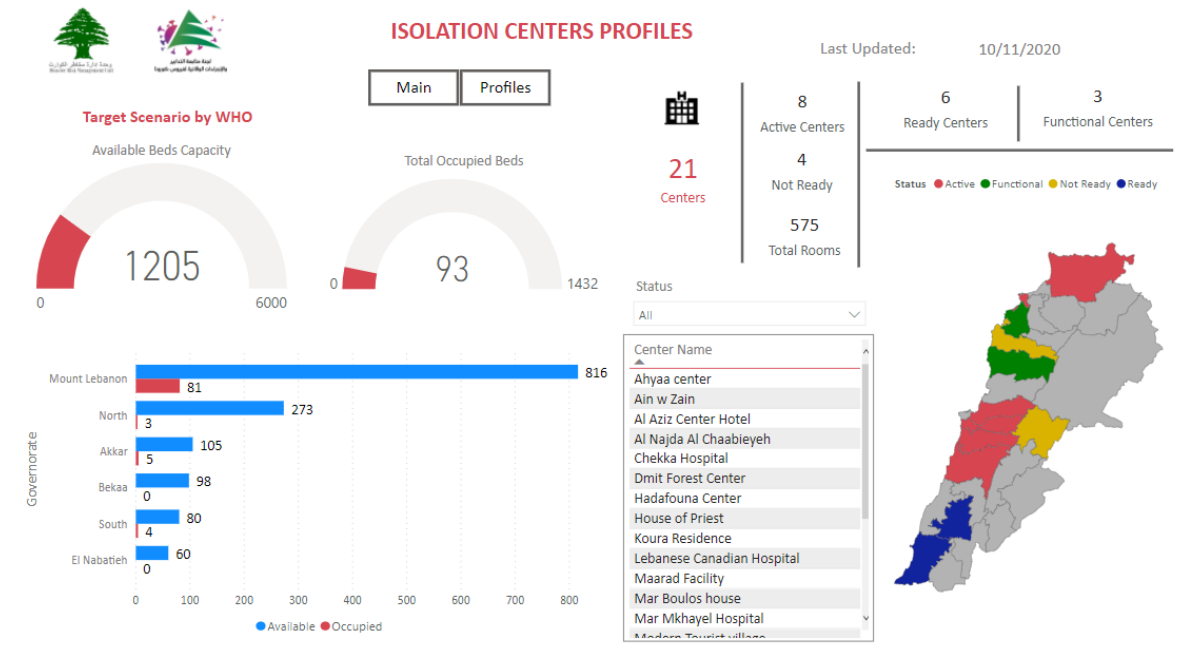
Online platform to track sector commitment in general mobilization procedures



Based on the recommendation issued by the National Committee for Follow-up of Preventive Measures and Measures to Confront the Coronavirus to open all sectors, provided that the general mobilization procedure (safe distance, muzzle, and hand sterilization) be applied, a special electronic platform was created that allows monitoring and measuring the percentage of commitment by various sectors on an ongoing basis.

The detailed results can be viewed directly at the following link: <http://bit.ly/covidsectordata>

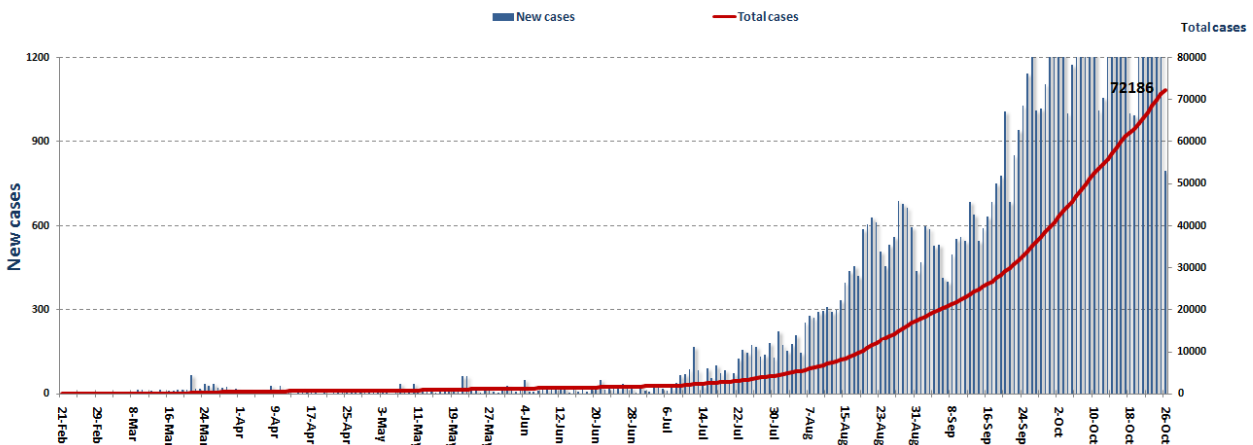
Occupancy rate of isolation centers for cases infected with Coronavirus



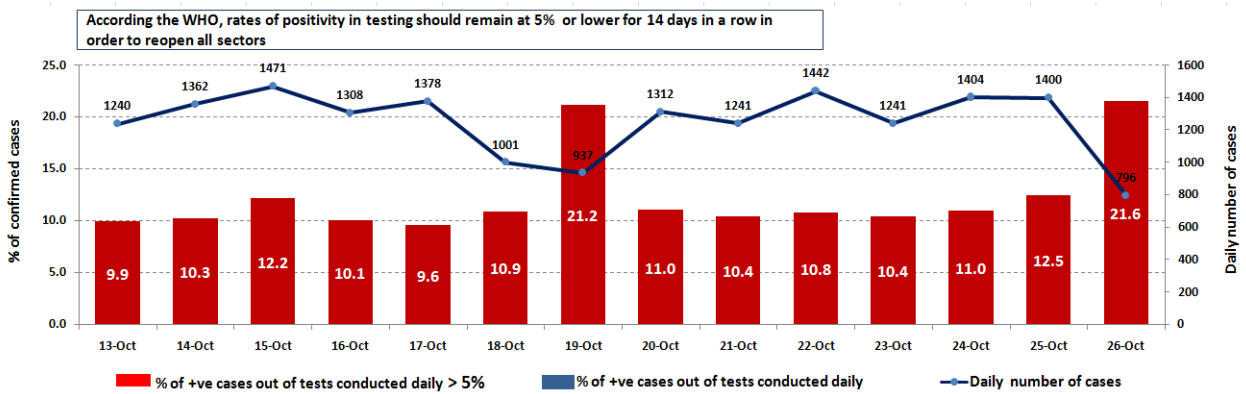
For more information about the isolation centers' distribution and the percentage of their occupancy, enter the following link: <http://bit.ly/DRM-IsolationCentersProfiles>

Note: These centers have been equipped in cooperation between the National Committee for Follow-up of Preventive Measures and Measures to Confront the Coronavirus and Governors and Municipalities, the United Nations Development Program, the World Health Organization, UNICEF, the Ministry of Public Health, the Syndicate of Nurses in Lebanon and the Syndicate of Specialists in Social Work.

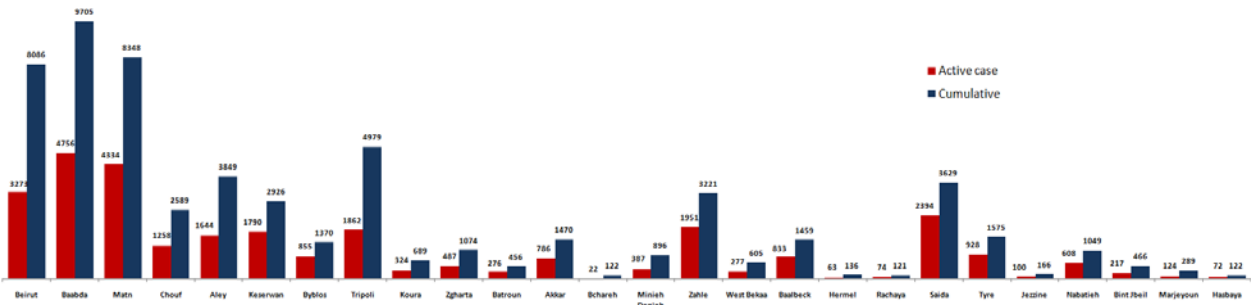
Cases per day



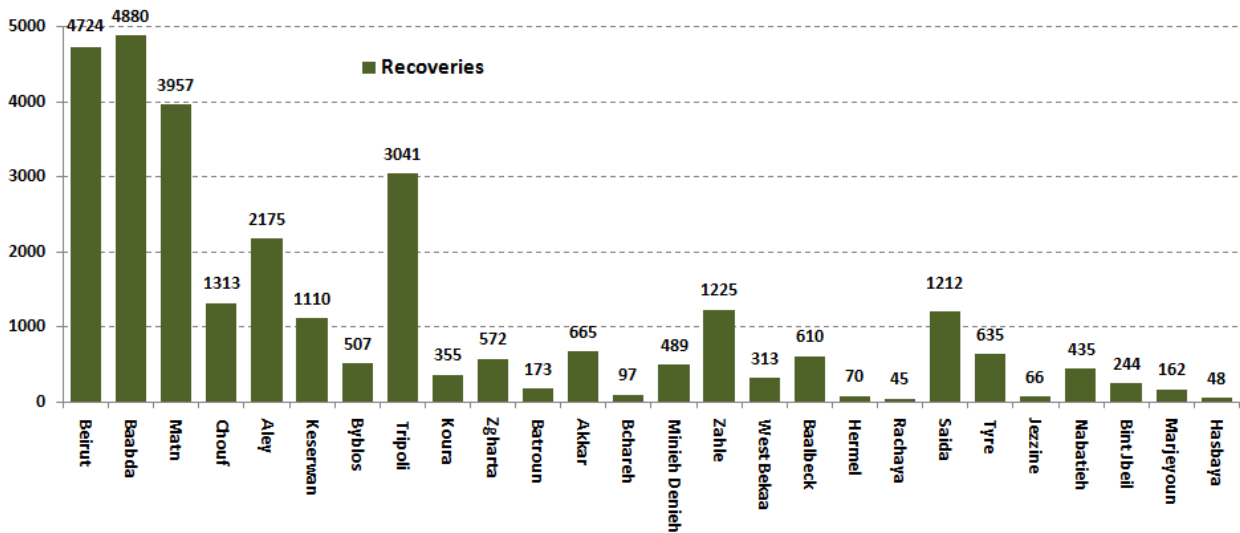
The percentage of positive cases out of the number of daily checks (13-26 Oct 2020)



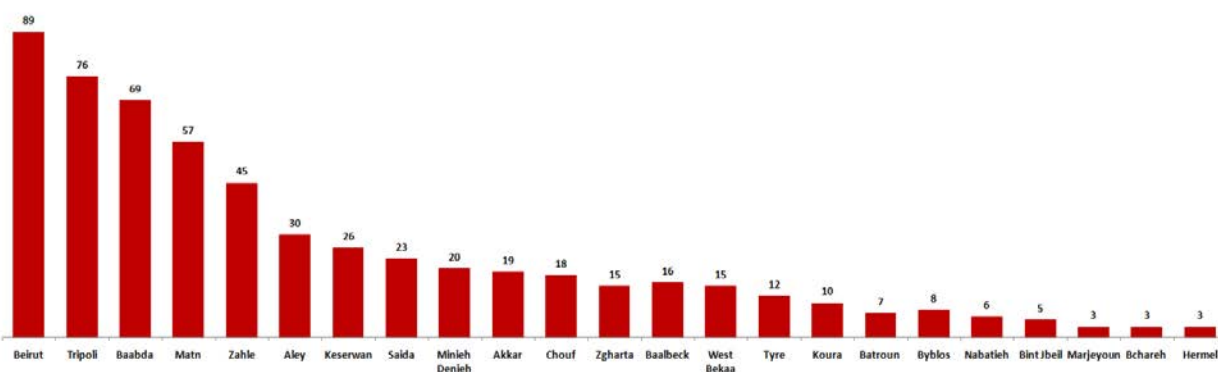
Distribution of Active Cases by Districts



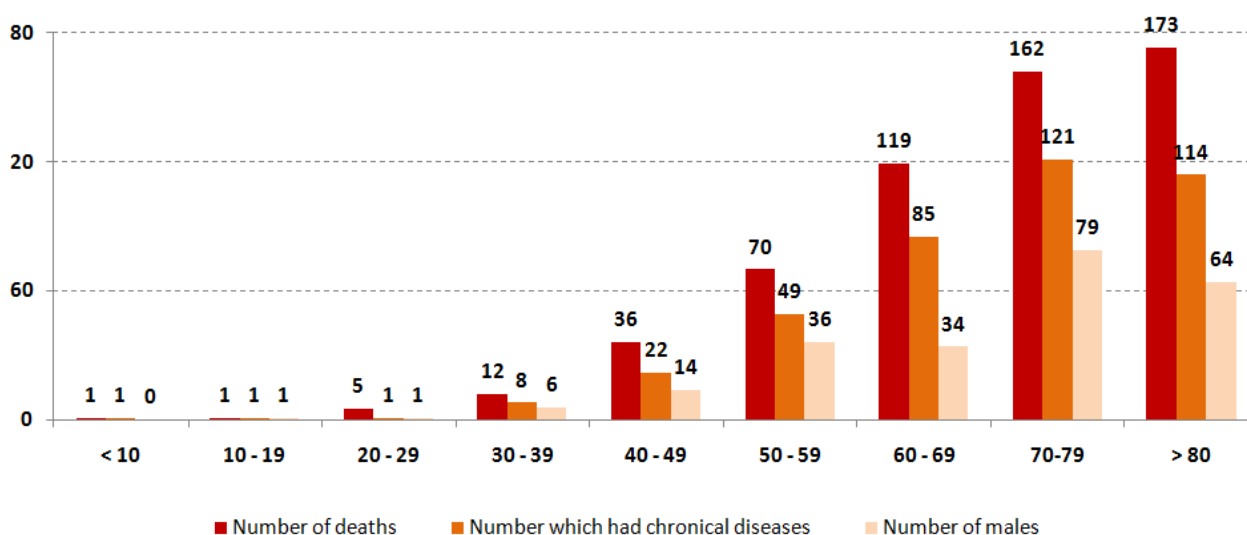
Recoveries



Distribution of deaths by Governorates



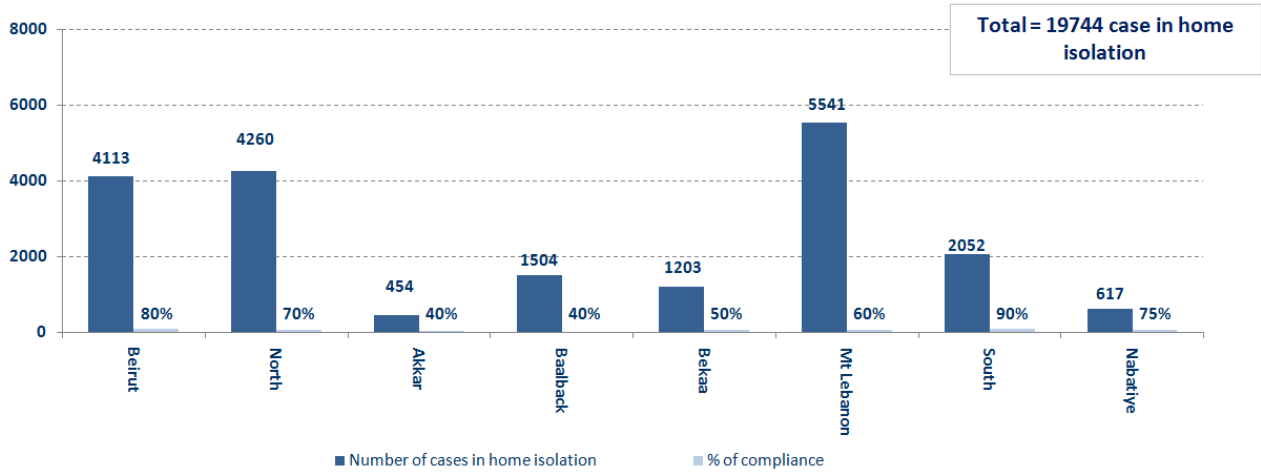
Distribution of deaths by Age



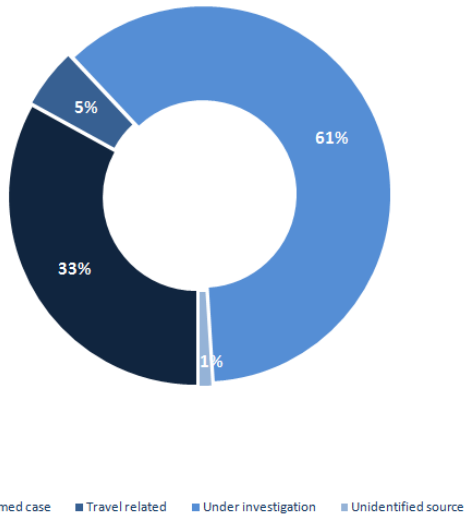
The distribution of the recorded deaths during the past 24 hours

Hospital	Residence	Gender	Age	Chronic
Hamchari	Saida	Male	65	Yes
Dar El Amal	Baalbek	Male	60	Yes
Hermel Gov Hospital	Hermel	Male	75	Yes
Saint George	Aleyh	Male	62	
Saint George	Chouf	Female	89	Yes
Almayas	Byblos	Male	72	Yes
Bint Jbeil Gov Hospital	Hasbaya	Female	76	Yes
Bint Jbeil Gov Hospital	Bint Jbeil	Female	85	Yes
Herawi Gov Hospital	-	Female	53	
Riyak Hospital	Baalbek	Male	84	Yes
Bahman Hospital	Aleyha	Female	79	Yes
Roum Hospital	Kesrwen	Male	75	Yes
Hariri Gov Hospital	Baabda	Female	84	Yes
Bahman Hospital	Tyre	Female	65	Yes

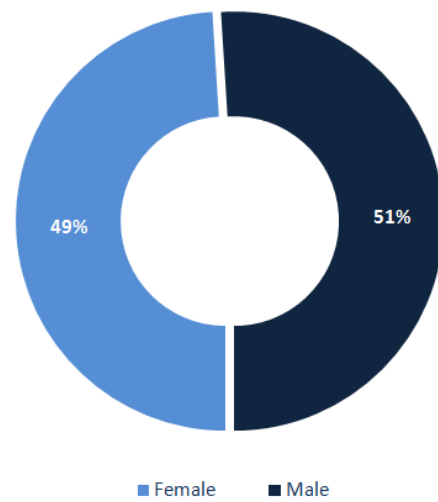
Number of individuals in home isolation and percentage of commitment to isolation



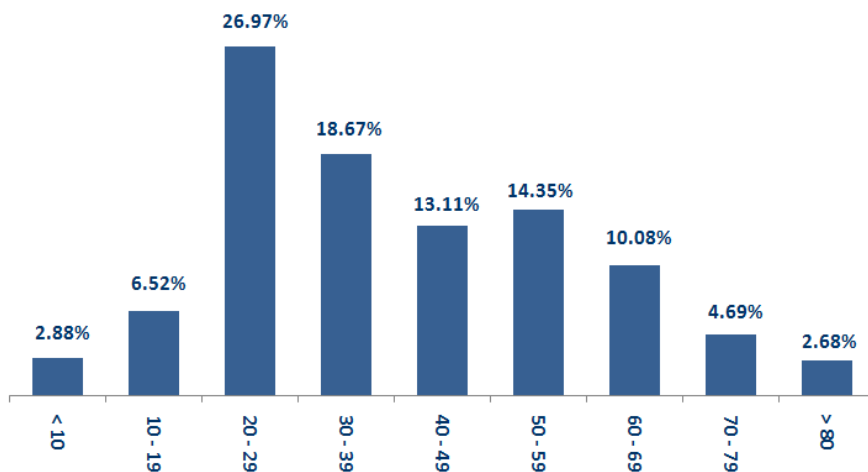
Exposure



Distribution according to gender



Distribution by age



Decisions and actions taken – 10/26/2020

Ministry of Public Health

- The Ministry stated that it will adopt the protocol regarding the drug "Ramdisever" and all samples that came to the Ministry were distributed free of charge to all regions according to need, and the Ministry is working to reserve the country's need for the vaccine.

- The Ministry states that Lebanon has passed the stage of containing the epidemic and called on those in contact to adhere to home quarantine and assume responsibility. The Ministry is in contact with Russian laboratories and Chinese vaccine manufacturers to reserve the right of the private sector to invest.

- The Ministry of Public Health reported that PCR tests had been completed for flights that arrived in Beirut and were conducted at the airport on 10/21/2020, 10/22/2020 and 10/23/2020, and the results showed fourteen (69) positive cases.

Arriving from	Company	Flight Number	Number of Positive Cases
21/10/2020			
Istanbul	Pegasus	756	1
Istanbul	Turkish Airlines	828	1
Istanbul	MEA	266	7
Al Najaf	Iraqi Airways	139	3
Istanbul	Turkish Airlines	826	8
22/10/2020			
Istanbul	Turkish Airlines	828	1
Istanbul	MEA	266	7
Erbel	MEA	325	5
Adana	Turkish Airlines	7836	1
London	MEA	202	1
Al Basra	MEA	333	4
Adana	Pegasus	6700	1
Al Najaf	MEA	327	8
Cairo	MEA	307	2
Dubai	FZ	159	1
Cairo	Egypt Airways	711	2
23/10/2020			
Istanbul	Egypt Airways	756	1
Cairo	Pegasus	713	1
Baghdad	Egypt Airways	131	3
Doha	Iraqi Airways	416	1
Istanbul	MEA	266	2
Istanbul	MEA	268	6
Istanbul	Turkish Airlines	826	1
Cairo	MEA	307	1
Total			69

Lebanese Red Cross

235,498	Number of PCR tests transferred to laboratories	52,571 (175 New)	Number of additional ambulance centers ready to respond	48	ambulance centers	6,997 (42 New)	cases transferred to hospitals
166	Number of volunteers trained to transfer PCR tests	1,498	Number of trained paramedics	8,772	total number of respondents	92,539 (220 New)	number of those benefiting from awareness *sessions
967	The number of university volunteers trained to follow up on prevention measures in companies and institutions	291	Number of university volunteers trained to conduct awareness sessions	550	total LRC volunteers for covid19	8,676 (15 New)	number of trained managers for isolation centers
4,354 (4 New)	Number of beneficiaries from educational electronic platforms COVID-19	261,102 (1,476 New)	Number of distributed equipment	1,246,602	total distributed posters, brochures, and flyers on covid19 prevention	694 (7 New)	number of prisons that have been disinfected

General Directorate of Internal Security Forces

The number of seizure records during the past 24 hours					The total number of records since 03/08/2020		
Written records of violating institutions (absorptive capacity and preventive measures)					4		
Written records of persons violating the decision to wear a mask					0	Beirut	21,515
Written records of people violating the general mobilization decision (Aragil* and social distancing)					197	Mount Leb	21,009
Total					201	Beqaa	8,953
						North	7,576
Beirut	Mount Leb	Beqaa	North	South	South	7,977	
7	131	31	3	29	Total	67,030	

General Directorate of State Security

- Reporting an injury among the international emergency forces personnel in the ranks of the Spanish battalion in the Nabatiyeh district, where all the battalion's activities were suspended until 11/08/2020.

-Reporting the closure of a number of towns in the Bekaa Governorate, based on the decision of the Ministry of Interior and Municipalities, due to the high number of Coronavirus cases.

- Reporting the number of injuries to 65 in the General Directorate of State Security.

- Notification of the percentage of compliance with the general mobilization decision in the governorates, which came as follows within the past 24 hours:

Beirut	South	North	Akkar	Beqaa	Nabateih	Baalbek Hermel	Mount Leb
30%	51%	47.5%	36%	70%	85%	10%	43%

General Directorate of General Security

- The report that a member of the Internal Security Forces was infected with the Coronavirus in the ancient town of Akkar.
- Reporting the commitment of the municipalities to the decision of the Minister of Interior and Municipalities:

Municipalities that abided by the decision	Municipalities didn't abide by the decision
Haris, Ain Kafr Zabad, Taalabaya, Ablah, Jdita, Bareij, Nabi Sheet	Al-Manara, Al-Rawda, Al-Suwairi, Al-Qobayat, Baakline, Ain Zahla, Al-Barouk, Al-Warhaniya, Kafr Nabrah

- Follow up the implementation of the required security and preventive measures at the airport, ports and border crossings.
- Reporting cases registered in the various districts and cases in home quarantine.

Ministry of Public Works and Transportation

Departing Flights		Arriving Flights	
Number of Flights	38	Number of Flights	41
Number of Departing Individuals	3,479	Number of Arrivals	4,847

Port	Entered			Left		
	Import	Direction	#	Export	Direction	#
Beirut	Cars	Turkey	1	Containers	Malta	1
	Containers	Lazqyeh	1			
Tripoli	Diesel	Beirut	1	Blank	Malta	1
Zahrani	Gasoline	Aghi Theodor	1			
Total			4			2

General announcements

- The Ministry of Interior and Municipalities issued Decision No. 1336 of 10/25/2020 regarding the continued closure of some villages and towns due to the high number of corona infections in them, based on the recommendations of the small committee affiliated to the Committee for Follow-up of Preventive Measures and Procedures for Coronavirus. The main highlights of the decision:

- Continue to work with the timing of preventing exit and entering the streets between one o'clock in the morning until six in the morning.
- The continued closure of bars, cabarets and nightclubs, without exceptions, and under penalty of referring the violators to the judiciary, until further notice.
- The obligation to wear a mask, cover the mouth and nose, avoid gatherings, and maintain a safe distance.
- The decision to open or close educational institutions in towns and villages is restricted to the Ministry of Education and Higher Education only.
- Determining the number of people traveling by public and private transportation.
- Closing the following villages and towns with their names and all their official and private administrations and institutions and canceling all social events in them, provided that coordination is made with the religious authorities in terms of closing the places of worship in:

- Baabda District: Al-Mardasha, Kfar Silwan
- Metn District: Mansouriya, Al-Klys, and Daychounieh
- Chouf District: Shehim, Daraya, Ktarmaya, Barja, Jiyeh, Zaarouriyeh, Jahiliya, Niha
- Aley District: Ain Enoub, Homal, Baysour, Majdal Baana
- Keserwan District: Ballouneh, Aintoura, and Al-Kfour
- Jbeil District: Houboub, Balat, Amchit, Nahr Ibrahim Al-Munsif, Ehmej, and Apricot
- Tripoli District: El Mina
- Koura District: Ptoratij Zgharta District: Karabash, Majdalaya
- Akkar District: Rahba, Hadat
- Minieh-Denniyeh district: Taran, Bakhoun
- Zahleh District: Qaa Al-Reem, Jdita, Ain Kafr Zabad, Kafr Zabad
- West Bekaa District: Al-Manara
- Baalbek district: Kafr ad-Din, Bednayel, Tamnin al-Fawqa, Tamnin al-Tahta, al-Nabi Shit
- Sidon District: Al-Baramia, Haret Saida, Abra, Al-Hajjah
- Tyre District: Monastery of Qanun Ras al-Ain, Yanouh, Maaroub, Siddiqin, Monastery of Qanun al-Nahr, Zebqine
- Nabatiyeh: Homin al-Fawqa, Dweir, Ansar
- Bint Jbeil: Rmeish - Katamon, Haris
- Marjeyoun: Qlaiaa, Adaisse, and Kafr Kila
- Hasbaya: Hasbaya and Fardis

- Some sectors (the health sector, the food sector and the industry sector), the media, gas and oxygen distribution warehouses, the Bank of Lebanon and its branches in all regions, social security and its branches, and municipal centers and their police, are excluded from the decision, within specific controls. Assigning governors to:
 - Defining the municipal zone in the major and interconnected towns that are mentioned in the closing clause Implementing this decision and requesting support from the Internal Security Forces when necessary.
 - Emphasizing the need for residents to adhere to public safety standards (masks, not walking around and mixing)
 - Request the district administrators to instruct the mayors to review the lists of positive cases daily on the IMPACT text with the aim of checking and correcting where necessary, in coordination with the Judicial Doctor and the Lebanese Red Cross.
- Assigning the General Directorate of Internal Security Forces to strictly enforce the decision and suppress violations, and to organize arrest records against violators.
- It is mandatory to call the emergency line 112 when any emergency occurs, and the citizen must move from his home.

Note: The decisions can be found at www.drm.pcm.gov.lb

Examples of lack of adherence to safety measures

Failure of some municipalities to abide by the Ministry of Interior and Municipalities Decision No. 1025/2020 related to the closure of towns that have a high risk of the spread of the epidemic.

- Demand gatherings and demonstrations.
- Failure to comply with the preventive measures and procedures required in several stores and markets (putting on a muzzle or face mask, sterilizing hands, maintaining a safe distance).
- Non-compliance with the 50% occupancy rate in several restaurants and amusement game centers.
- Gatherings for social events.
- Failure of those in contact with confirmed cases to adhere to home isolation procedures until the results of the laboratory tests are issued.

If you feel any symptoms, call directly the hotline of the Ministry of Public Health: 1214 or 01/594459

Names of laboratories that do not adhere to the procedures approved by the Ministry of Public Health About the information required to be recorded for infected cases

Laboratory/Hospitals	Number of positive cases without specifying the place of residence
INOVIE Lab	64
Rafik Hariri Gov Hospital	21
Dar Amal Hospital	12
AUBMC	7
Elias Hourri Hospital	6
Rizk Hospital	5
Al Hadi Lab	4
Fontana Hospital	2
Hamoud Hospital	1

Laboratory/Hospitals	Number of positive cases without a phone number
INOVIE Lab	68
Rafik Hariri Gov Hospital	21
Dar Amal Hospital	18
ADC Lab	17
Karim Lab	15
AUBMC	13
Al Hadi Lab	12
Elias Hourri Hospital	6
Rizk Hospital	5
Hamoud Hopsital	4
Fontana Hospital	2

A list of the laboratories accredited by the MoPH to conduct PCR tests

المختبرات الحكومية المؤهلة إجراء التشخيص المخبري لفيروس كورونا بطريقة الـ RT-PCR

المختبر	الموقع
مستشفى رفيق الحريري الجامعي RHUH	بيروت
مستشفى حيا الحكومي	حيا
مستشفى طرابلس الحكومي	طرابلس
مستشفى البترون الحكومي	البترون
مستشفى فتوح كسروان الحكومي (النيوار)	كسروان
مستشفى نبيه بزّي الحكومي الجامعي	النبطية
مستشفى نينان الحكومي	نينان
مستشفى بنت جبيل الحكومي	بنت جبيل
مستشفى بعليك الحكومي	بعليك
مستشفى الرئيس الياس الهراوي الحكومي	زحلة

مختبرات المستشفيات العسكرية

Hôpital Militaire Central	المستشفى العسكري المركزي في بيروت	بيروت
---------------------------	-----------------------------------	-------

المختبرات المؤهلة لأخذ عينات "المسحات الأنفية" بطريقة Drive- thru

مختبر ميديكال دياغنوستيك تريمانت سنتر (الحمراء) Medical Diagnostic Treatment Center (MDTC)	بيروت
مختبر ميد لاب MedLab SAL CIC ALS (الحمراء - الجفيلور)	بيروت
مختبرات عيتاني Itani Medical Laboratories (المزرعة)	بيروت
مختبر أ ب سي ABC Laboratories	الأشرفية
مختبرات معوض الطبية Mouawad Medical Laboratory	الشياح
مختبرات الشياح (د. فؤاد ربحان) Rihan Medical Center	الشياح
مختبر إكسبرت لاب Expert Lab	المنصورة
مختبر لايف لاب Life LAB	بعليك
مستشفى الرياق Riyak Hospital	رياق

المختبرات الخاصة المؤهلة لإجراء التشخيص المخبري لفيروس كورونا بطريقة الـ RT-PCR

المختبر	الموقع
AUBMC مستشفى الجامعة الأميركية	بيروت
Hotel-Dieu de France (HDF) مستشفى أوتيل ديو الجامعي	بيروت
مختبرات رودولف ميريو (الجامعة اليسوعية - المتحف) Laboratoire Rodolphe Mérieux (Université Saint-Joseph)	بيروت
Saint-George Hospital - UMC مستشفى القديس جارجيوس الجامعي	بيروت
Makassed General Hospital مستشفى المقاصد	بيروت
LAU Medical Center - Rizk Hospital مستشفى رزق الجامعي	بيروت
Hôpital Libanais Geitawi - CHU مستشفى اللبناني الجعيتاوي الجامعي	بيروت
Hôpital Notre-Dame du Rosaire مستشفى الوردية	بيروت
Doctor 's Center مختبر مركز الأطباء	بيروت
Fontana Laboratories (الحمرا) مختبر فونتانا	بيروت
مختبر الأمن العام (العنابية)	بيروت
Laboratoire Jabre-Ghorra مختبرات جبر وغرة	بيروت
Saint Marc Medical & Diagnostic Center مختبر السان مارك	بيروت
Laboratoire Moderne (Modern Lab- Berjaoui) المختبرات الحديثة	الغبيوي
Sahel General Hospital (SGH) مستشفى الساحل	الغبيوي
مستشفى الزهراء الجامعي	الغبيوي
Al Zahraa Hospital - UMC مستشفى الرسول الأعظم	برج الزواجة
مستشفى بهمن	
Al Rassoul Al Aazam Hospital Bahman Hospital	حارة حريك
مختبر ناتيونال دياغنوستك سرفيس كومباني National Diagnostic Services Company (NDSC)	حارة حريك
Medical Diagnostic Center مختبر الدكتور محمود عثمان - مركز التحاليل الطبية	لرابعة
American Diagnostic Center (ADC) مختبر أميريك دياغنوستك سنتر	الجناح
Mount Lebanon Hospital مستشفى جبل لبنان	بعنا
Hôpital Saint-George – Hadath مستشفى السان جورج الحدث	بعنا
Al Hadi Laboratory مختبر الهادي	بعنا
INOIE-Liban مختبر	بعنا

Hôpital du Sacré- Coeur مستشفى قلب يسوع	الحازمية
Clinigene مختبر كلينيجان	الحازمية
Hôpital Dr.Samir Serhal مستشفى سرحال	المتن
Transmedical for Life مختبر ترانس ميدكال فور ليف	المتن
Haroun Hospital مستشفى هارون	الزلفا
Bellevue Medical Center (BMC) مستشفى بلفو	المنصورة
Hôpital Albert Haykal مستشفى هيكال	الكورة
Centre Hospitalier du Nord (CHN) مركز الشمال الإشتغاني	زغرتا
Mazloum Hospital مستشفى المظلوم	طرابلس
Al Mounla Hospital مستشفى الملا	طرابلس
Nini Hospital مستشفى النيني	طرابلس
مختبر ميكروبيولوجيا الصحة والبيئة LMSE - المعهد العالي للدكتوراه، الجامعة اللبنانية	طرابلس
CHU - Notre-Dame des Secours مستشفى سيدة المعونات الجامعي	جبل
Lab Akiki & Boulos مختبر عقيقي وبولس	جبل
Centre Médical Wakim مختبر واكيم	جونية
Ain Wazein Hospital مستشفى عين وزين	الشوف
Hammoud Hospital UMC مستشفى حمود الجامعي	سيدا
Al Karim Medical Laboratory (KML) مختبر الكريم	سيدا
Sheikh Ragheb Harb Hospital مستشفى الشيخ راجب حرب	البيمنة
Sabbah Diagnostic Center (SDC) مختبر الصباح	البيطية
Jabal Amel Hospital مستشفى جبل عامل	صور
Mashrek Diagnostic Center (MDC) مختبر المشرق	صور
Dar Al Amal University Hospital مستشفى دار الأمل الجامعي	بعلبك
Khoury General Hospital مستشفى خوري	زحلة
Medical Care Center (MCC) مختبر ميدكال كير سنتر	زحلة