



Lebanon National Operations Room Daily Report on COVID-19

Thursday, November 26, 2020

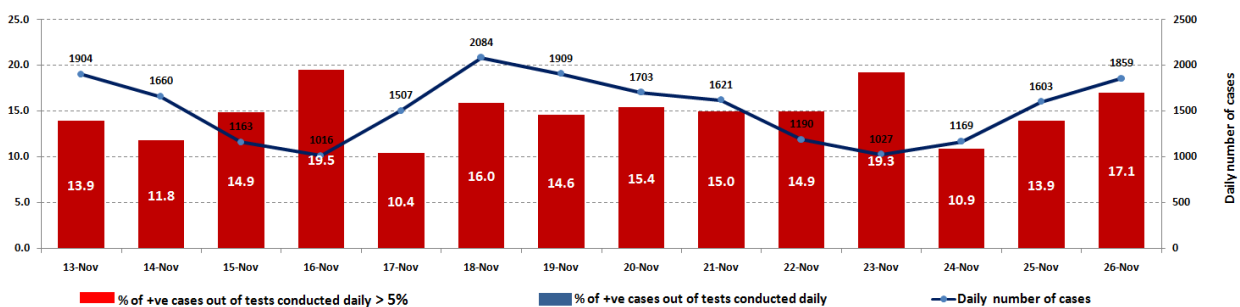
Report #253

Time Published: 07:30 PM

1,859 New Cases		122,159 Total Cases since 21.2.2020		974 Total Deaths		73,021 Total Recovered	
1,846 Residents	13 Expats	119,408 Residents	2,751 Expats	24 New Deaths		1,785 New Recovered	
138 Deleted Status due to its recurrence		1,709 Total Cases in the Health Sector		48,164 Total Active Cases		916 Hospitalized Cases	
14.9% Positivity rate for every 100 test		17 Cases in the Health Sector		47,248 Cases in Home Isolation		135 Ventilated Cases	6 New Cases in ICU
1,467,031 COVID-19 Tests since 21.2.2020						341 Total cases in ICU	575 Mild cases
902 COVID-19 Tests at Airport within 24 hrs.		10,902 COVID-19 tests for residents within 24 hrs.		Lebanon Status compared to the World			
				Total Cumulative		122,159	
				Total Deaths		974	
				Deaths percentage		0,78%	
				Total recoveries		73,021	
						60,908,673	
						1,430,367	
						2.34%	
						42,195,066	

Ref: Ministry of Public Health Data

The percentage of positive cases out of the number of daily tests (13 Nov– 26 Nov 2020)



Ref: MoPH data

Distribution of Cases by Villages

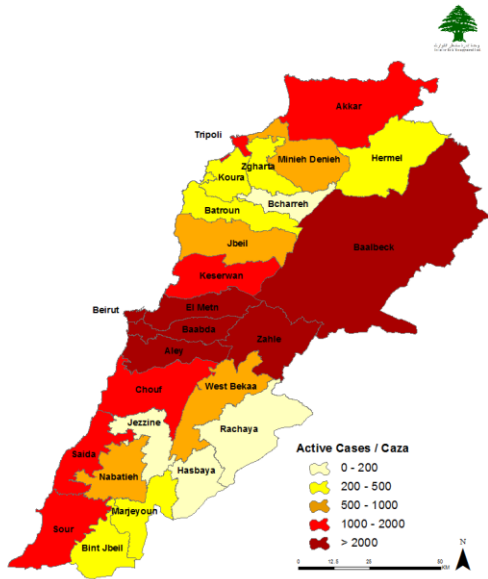
Beirut	151	Baabda	233	Maten	256	Chouf	62	Kesserwan	62	Aley	103
Ain El Mraisseh	3	Chiyah	16	Borj Hammoud	20	Saadiyat	3	Jounieh Sarba	1	El Aamroussiyeh	1
Ras Beyrouth	2	Jnah	5	Nabaa	1	Haret En Naameh	2	Jounieh Kaslik	2	Hay Es Sellom	13
Raoucheh	1	Ouzaai	5	Sinn El Fil	20	Chhim	7	Zouk Mkayel	8	El Qoubbeh	3
Hamra	5	Bir Hassan	2	Horch Tabet	1	Daraiya	1	Nahr El Kalb	1	Khaldeh	4
Msaiteh	7	Ghbayreh	9	Jdaïdet El Matr	10	Ketermaya	2	Jounieh Ghadir	5	Chouefat El Oumara	16
Ouata El Msaiteh	1	Ain Er Roummaneh	9	Baouchriyeh	8	Sibline	1	Zouk Mosbeh	6	Deir Qoubel	1
Mar Elias	7	Furn Ech Chebbak	1	Daoura	4	Barja	3	Haret Sakhr	4	Aaramoun	13
Tallet El Khayat	2	Tahouit En Nahr	2	Raouda	5	Dibbiyeh	1	Sahel Aalma	2	Bchamoun	7
Mazraa	9	Haret Hreik	56	Sadd El Baouchriyeh	4	Jiyeh	2	Tabarja	3	Blaybel	1
Borj Abou Haidar	1	Laylakeh	8	Sabtiyeh	7	Ouadi Ez Zayni	2	Adma Oua Dafneh	2	Houmal	4
Tariq Ej Jdideh	10	Borj El Brajneh	20	Dekouaneh	30	Jmailiyeh	1	Bouar	1	Bdadoun	1
Horch	3	Mrejeh	9	Mkalles	1	Rmeileh	2	Aaqaybeh	1	Bsous	2
Ras En Nabaa	7	Tahouitat El Ghadir	1	Antelias	4	Joun	1	Aajaltoun	3	Aaley	6
Basta Et Tahta	3	Baabda	6	Jall Ed Dib	6	Mghayriyeh	2	Ballouneh	2	Kahhaleh	2
Jisr	1	Hazmiyeh	7	Naqqach	9	Mazraat Ed Dahr	4	Shayleh	2	Qmatiyeh	1
Rmeil	8	Fayadiyeh	1	Zalqa	7	Zaarouriyeh	1	Daraiya	1	Aayat	1
Achrafiyeh	22	Hadath	43	Baqout	5	Semqaniyeh	1	Ain Er Rihaneh	1	Kyfoun	2
Aadlyeh	2	Boutchay	1	Dbayeh	5	Bchetfine	1	Jaaita	2	Bayssour	1
Other	57	Kfar Chima	3	Mansouriyeh	21	Aammiq	1	Ghazir	1	Dfoun	6
Koura	12	Ouadi Chahrour	2	Daychouniyeh	3	Majdel El Meouch	1	Kfar Hbab	1	Bhamdoun	1
Ain Aakrine	1	Haret Es Sitt	2	Fanar	8	Ouarhaniyeh	3	Borj El Ftouh	1	Majdel Baana	1
Rechdibbine	1	Baalchmay	1	Ain Saadeh	4	Deir Dourit	1	Ghosta	1	Saoufar	2
Kfar Hata	1	Aabadiyeh	3	Roumieh	2	Ainbal	1	Ghidras	1	Rouayssat Saoufar	1
Kefraiya	1	Aaraiya	4	Bqennaya	2	Gharifeh	2	Qleiaat	4	Charoun	2
Enfeh	2	Jamhour	1	Bsalim	6	Moukhtara	1	Aachqout	1	Btater	1
Dahr El Ain	2	Zandouga	1	Nabay	1	Beqaata	4	Raachine	1	Aazzouniyeh	1
Nakhleh	2	Hammana	2	Mtayleb	4	Ain Ouzain	2	Bqaatouta	1	Ain Merhi	1
Other	2	Chbaniyeh	1	Rabiyeh	3	Khreibeh	1	Other	3	Ain Dara	1
Sour	47	Falougha	1	Qornet Chehouane	2	Mazraa	1	Jbeil	44	Other	7
Sour	8	Qornayel	1	Raboueh	1	Kfar Nabrakh	3	Jbayl	9	Baalback	260
Sour El Bass	1	Jour El Haouz	1	Beit Ech Char	2	Jbaa	3	Mastita	2	Baalbek	35
Jall El Bahr	1	Other	9	Zakrit	1	Other	1	Eddeh	1	Chraouneh	1
Er Rachidiyeh	1	Tripoli	29	Bikfaya	6	Batroun	8	Aamchit	4	Ras El Ain	2
Borj Ech Chemali	1	Ez Zeitoun	3	Ain Er Rihaneh	1	Batroun	2	Halate	8	Ain Bourday	1
Batoulay	2	Bab Er Raml	1	Beit Chabab	1	Kfar Aabida	1	Fidar	2	Douris	16
Smaiyeh	1	Et Tall	1	Bhersaf	1	Chikka	3	Hosrayel	1	laat	2
Mjadel	2	El Qoubbeh	3	Ain El Kharroubeh	2	Aabrine	1	Nahr Ibrahim	3	Aaddous	2
Aayit	2	Et Tabbaneh	2	Aatchaneh	2	Other	1	Ehmej	7	Taybeh	1
Barich	1	Mina	3	Ain Et Tefaha	1	Akkar	73	Adonis	1	Magneh	2
Qana	3	Qalamoun	2	Abou Mizane	1	Halba	4	Bintaael	1	Saaideh	1
Maarakeh	2	Beddaoui	2	Qornet El Hamra	3	Cheikh Mohammad	1	Kafr	1	Kfar Dane	1
Ain Baal	1	Other	12	Broummana	6	Nfisseh	1	Hboub	3	Ras Baalbek	1
Bazouriyeh	1	Zahle	185	Jouret El Ballout	1	Aadbil	1	Other	1	Ain	13
Hanaouay	2	El Midane	4	Baabdat	1	Zouq El Hbalsa	1	Hermel	33	Aarsal	1
Chehabiye	3	Haouch Zaraaneh	1	Beit Meri	1	Bezbinda	2	Hermel	14	Laboueh	19
Srifa	3	Er Rassiyeh	5	Monteverdi	4	Aakkar El Aatiqa	2	Bdayta	1	Qaa Baalbek	1
Tayr Falsay	1	El Maallaqa	4	Mrouj	1	Khreibet Ej Jindi	1	Daoura	1	Hlabta	1
Bedias	2	Karak Nouh	1	Aintoura	1	Massaoudiyeh	1	Kouakh	3	Chaat	1
Aabbassiyeh	1	Maallaqa Aradi	1	Chouaya	1	Kfar Melki	1	Qasr	1	Younine	4
Chabriha	3	Haouch El Oumara	1	Kfar Aaqab	2	Qleiaat	1	Jour El Hachich	1	Bessailet El Fououqa	3
Chaatiyeh	1	Saydet En Najat	1	Mar Moussa	2	Aabboudiyeh	4	Hariqa	1	Bechouat	3
Jbal El Botm	1	Haouch El Oumara	4	Baskinta	1	Bebnine	7	Other	11	Btedaai	1
Borj Rahhal	1	Zahleh Aradi	6	Other	10	Mhammara	1	Rachaya	6	Yammouneh	7
Chihine	1	Fourzol	8	West Bekaa	48	Berqayel	4	Rachaiya El Fououqa	1	Bednayel	10
Naqoura	1	Hazerta	1	Machghara	12	Jdaïdet El Qayteaa	2	Khirbet Rouha	2	Qsarnaba	3
Nabatieh	31	Ablah	2	Aana	2	Fnaydeq	2	Rafid	1	Louayzeh	1
Nabatiyeh Et Tahta	1	Qaa Er Rim	3	Mansoura	1	Rahbeh	11	Bireh	1	Temnine El Fououqa	1
Zibdine	2	Niha	2	Joubb Jannine	1	Ouadi Ej Jamous	4	Other	1	Beit Chama	6
Kfar Roummane	4	Ksara	5	Kamed El Laouz	3	Machta Hammoud	1	Saida	34	Haouch Er Rafqa	9
Choukine	1	Chtaura	2	Ghazze	4	Qachlaq	1	Saida El Qadimeh	4	Temnine Et Tahta	8
Habbouch	2	Jalala	1	Soultan Yaaqoub	6	Aaidamoun	1	Ain El Heloueh	3	Chmistar	5
Jbaa	1	Makseh	1	Qaraaoun	4	Aandqet	2	Aabra	4	Haouch Snaid	1
Houmine Et Tahta	1	Taalabaya	5	Manara	1	Ouadi Khaled	1	Ghaziyeh	2	Taraya	15
Zefta	1	Taanayel	1	Haouch El Harimeh	3	Akroum	4	Zeita	1	Serraaine Et Tahta	7
Deir Ez Zahrani	1	Saadnayel	7	Sohmor	4	Other	12	Kharayeb	1	Serraaine El Fououqa	4
Charqiyeh	1	Qabb Elias	10	Marj	4	Bchareh	1	Zrariyeh	1	Talia	1
Harouf	1	Mrayjat	2	Yohmor	1	Bazaouneh	1	Sarafand	9	Hizzine	1
Douair	1	Barr Elias	23	Raouda	1	Minieh Denieh	15	Bissariyeh	1	Khodr	2
Jibchit	1	Majdel Aanjar	3	Other	1	Deir Aammar	2	Mazraat El Aaqbiyeh	1	Sifri	1
Aadchit	1	Riyayq	14	Zgharta	20	Minieh	4	Najjariyeh	4	Nabi Chit	31
Aabba	3	Aali En Nahri	4	Zgharta	5	Sir Ed Danniyeh	1	Erkay	1	Brital	11
Insar	2	Deir El Ghazal	3	Kfar Dlaqous	1	Aassoun	1	Aanqoun	1	Bouday	12
Qsaibe	2	Raait	5	Harf	1	Beit El Faqs	1	Other	1	Aallaq Et Tell	1
Kfar Sir	1	Terbol	4	M ^o Ejdlaiya	4	Sfireh	1	Marjeyoun	12	Ain El Bounaya	1
Yohmor	2	Ain Kfar Zabad	2	Haret Ej Jdideh	1	Kfar Habou	1	Qlaiaa	1	Chlifa	1
Other	2	Dalhamiyeh	1	Aalma	1	Balkhaaoun	3	Khiyam	3	Other	9
Jezzine	7	Kfar Zabad	22	Khaldiyeh	1	Other	1	Aadaysse	1	Bint Jbeil	5
Aaray	1	Faamour	1	laal	2	Hasbaya	9	Kfar Kila	3	Rmaych	4
Kfar Houneh	1	Other	25	Bchannine	1	Hasbaya	9	Houla	1	Kounine	1
Sfaray	2			Daraiya	1			Taloussa	2	Other	113
Roum	1			Aaintourine	1			Majdel Selm	1		
Srayri	1			Other	1						

All reports and related decisions can be found at: <http://drm.pvm.gov.lb>

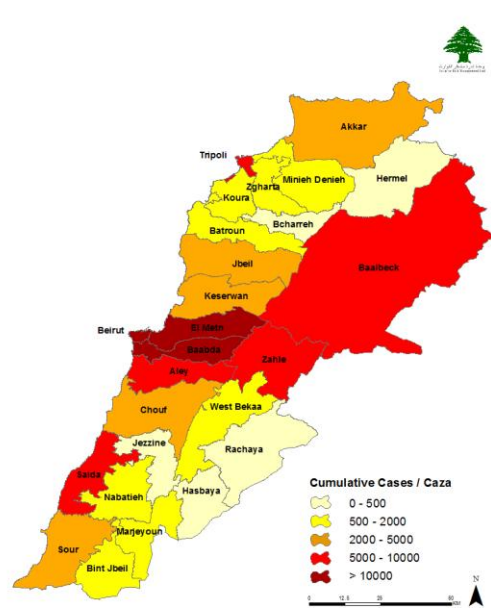
Or social media @DRM_Lebanon

Distribution of Active and Cumulative Cases

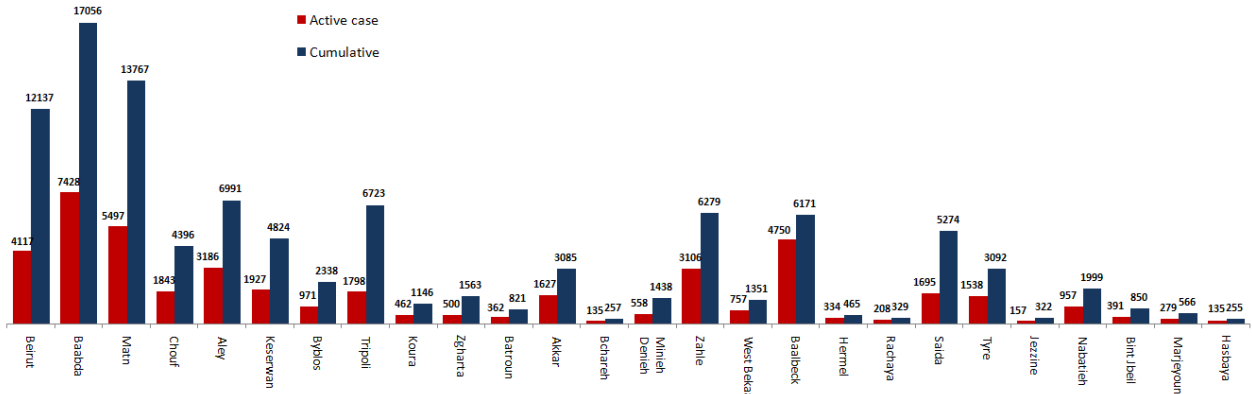
Distribution of Active Cases



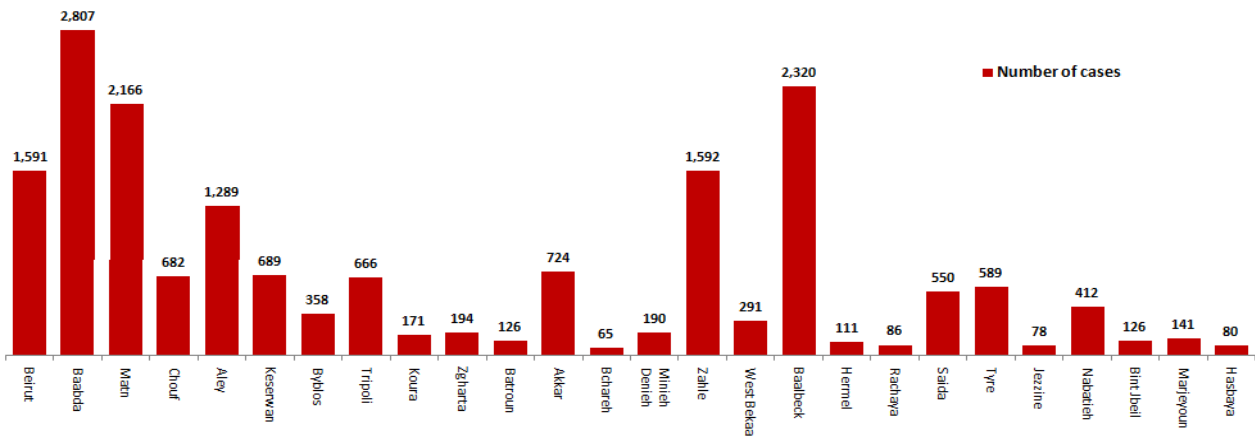
Distribution of Cumulative Cases



Number of Cases by Location



Number of cumulative cases for the last 14 days



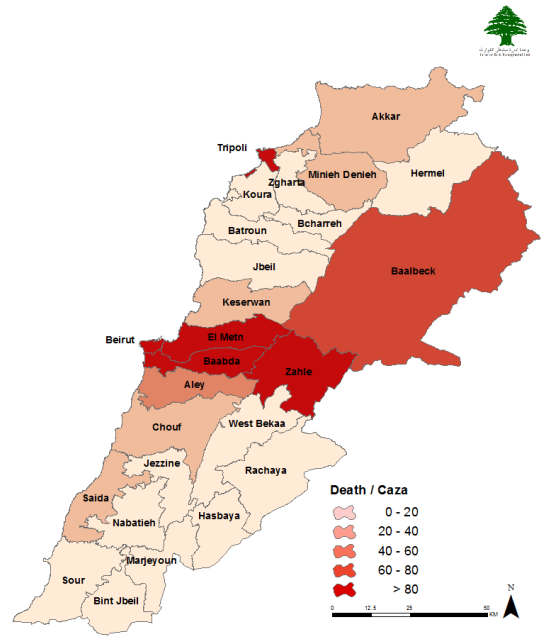
All reports and related decisions can be found at: <http://drm.pvm.gov.lb>

Or social media @DRM_Lebanon

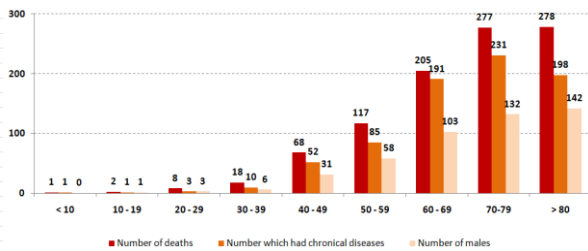
Distribution of Death Cases

Distribution of deaths during the past 24 hours

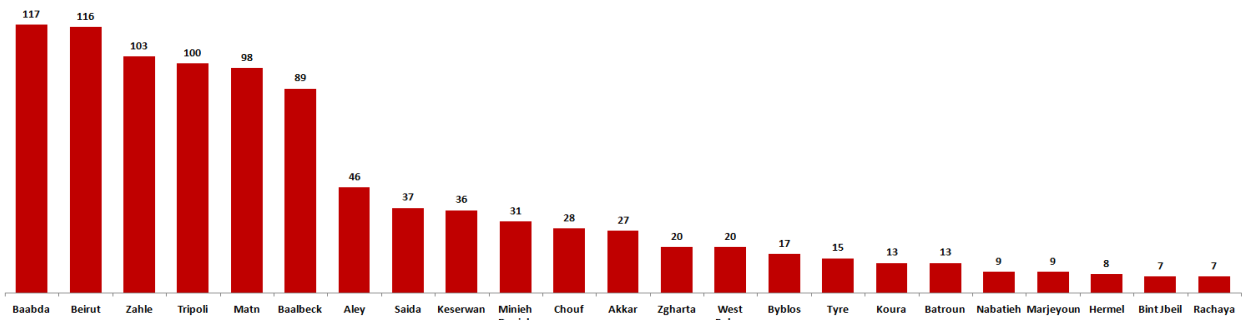
Hospital	Residence	Gender	Age	Chronic
Batroun Hosp.	Batroun	Female	78	Yes
Al Zahraa	Aley	Female	80	Yes
Tal Chiha	Zahle	Female	83	Yes
Baalback Gov.	Baalback	Male	69	Yes
Herawi Gov.	Zahle	Male	64	Yes
Notre Maritime	Batroun	Male	65	Yes
Tripoli Gov.	Tripoli	Male	77	Yes
Dar Amal	Baalback	Female	77	Yes
Dar Amal	Baalback	Female	54	Yes
Dar Amal	Baalback	Male	83	Yes
Saint George	Aley	Female	68	Yes
Jeatawi	Beirut	Male	85	Yes
Sacre Couer	Baabda	Male	59	No
Sacre Couer	Baabda	Female	63	Yes
Baabda Gov.	Maten	Male	64	Yes
Tripoli Gov.	Tripoli	Male	50	Yes
Makased	Beirut	Male	89	Yes
Saint George	Beirut	Female	54	No
Herawi Gov.	Zahle	Female	65	Yes
Herawi Gov.	Zahle	Female	47	No
Hermel Gov.	Baalback	Male	65	Yes
Makased	Beirut	Male	70	Yes
Baalback Gov.	Baalback	Male	76	No
Dar Amal	Baalback	Male	72	Yes



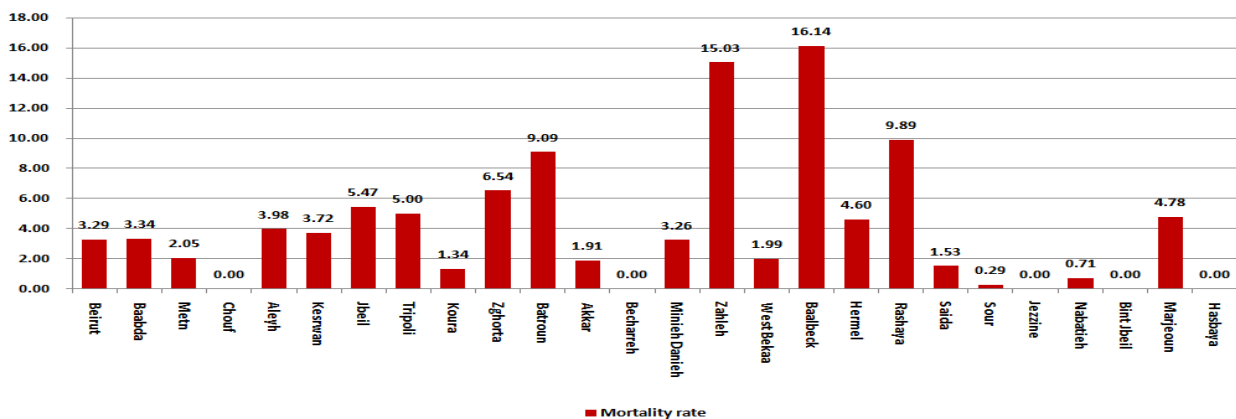
Distribution of deaths by Age Groups



Distribution of deaths by Governorates



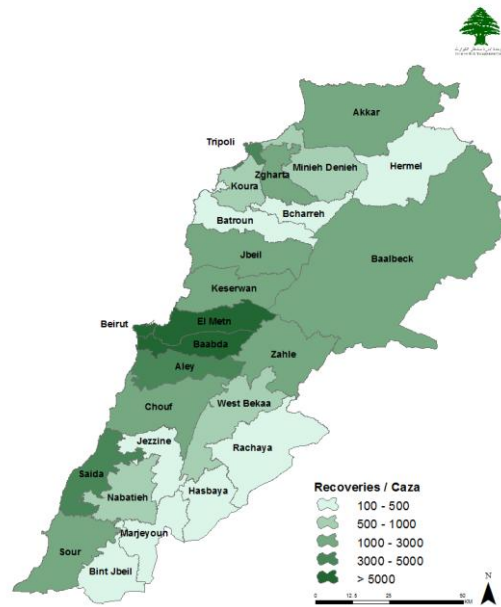
Distribution of mortality rate for the last 14 days



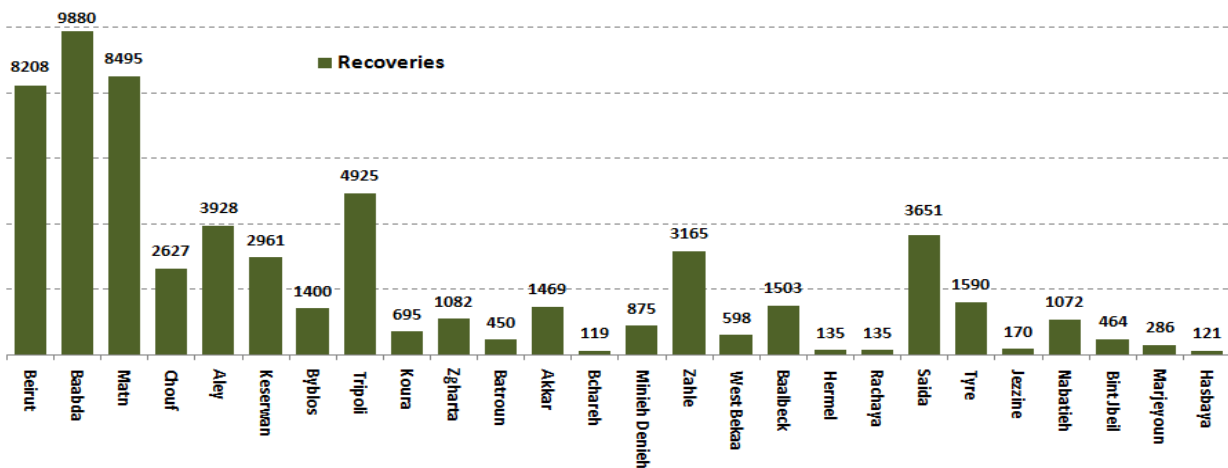
All reports and related decisions can be found at: <http://drm.pvm.gov.lb>

Or social media @DRM_Lebanon

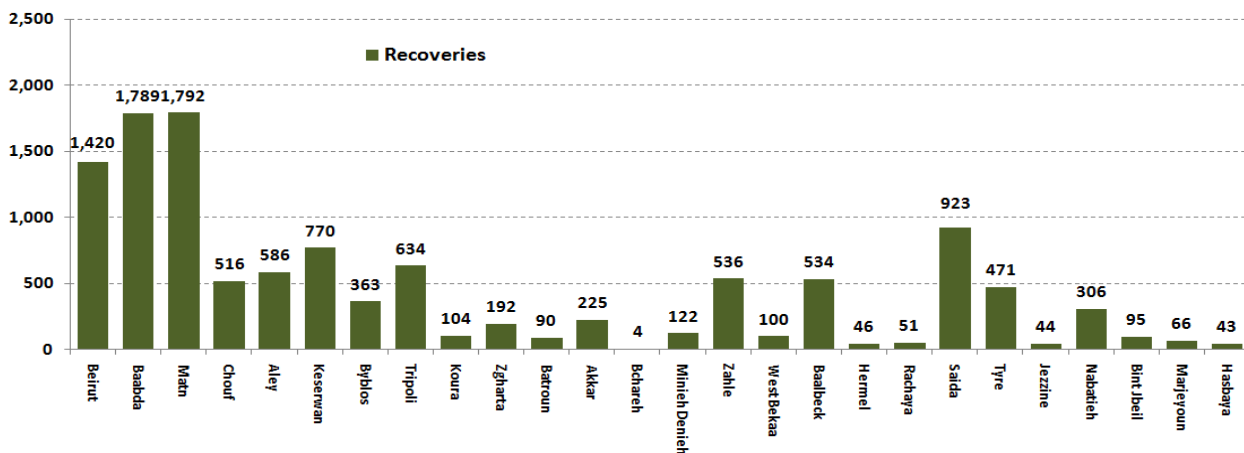
Distribution of Recoveries



Distribution of Recoveries per Casa



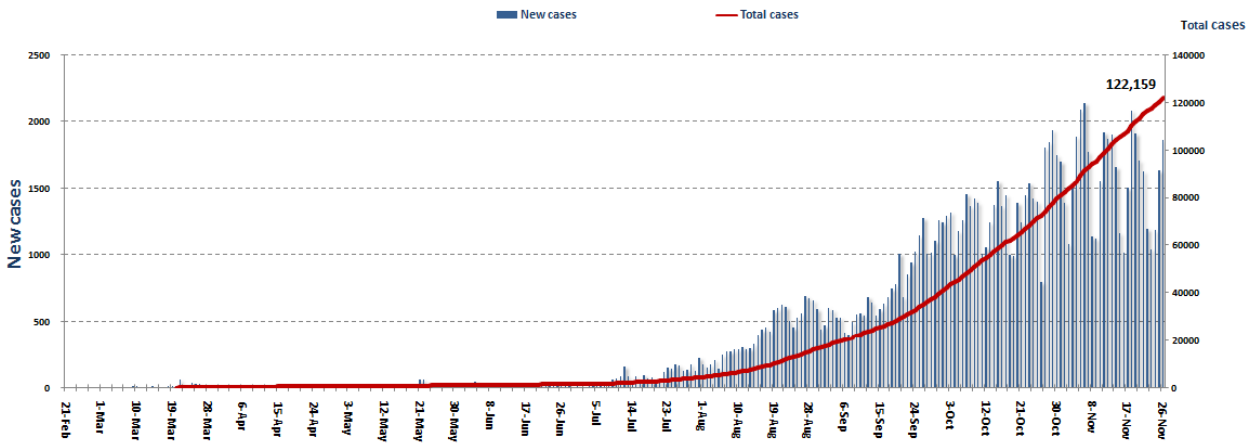
Distribution of Recoveries per Casa in the last 14 days



All reports and related decisions can be found at: <http://drm.pvm.gov.lb>

Or social media @DRM_Lebanon

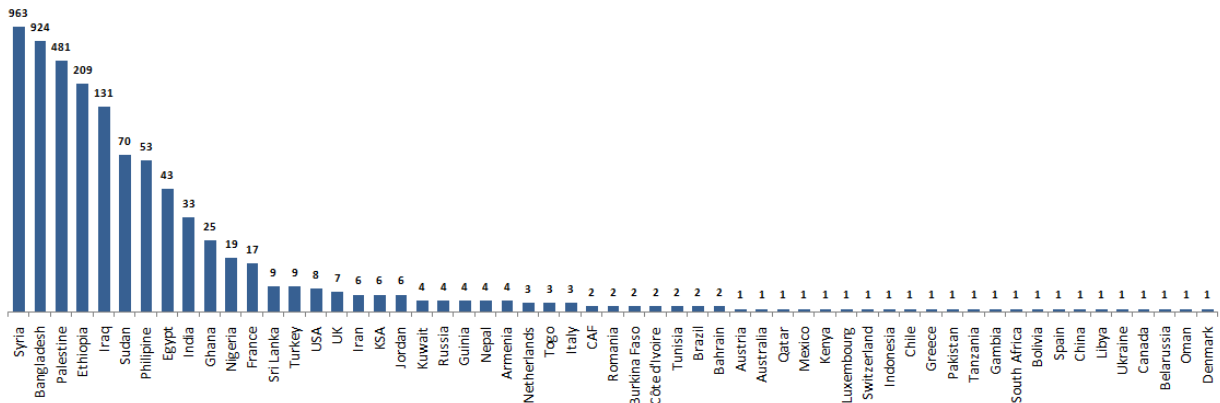
Cumulative cases per day



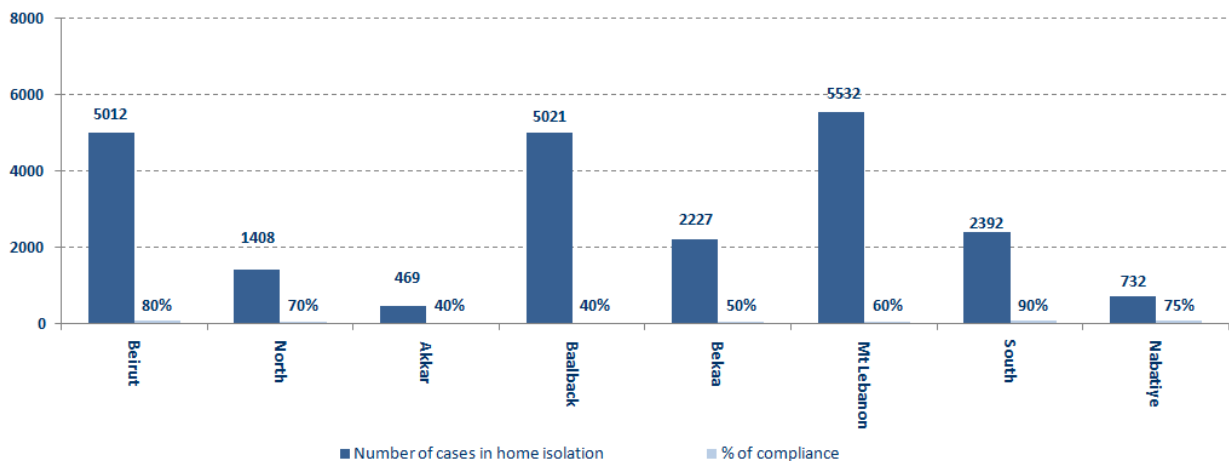
Ref: MoPH data

Distribution of cases by nationality

Lebanese : 114,477 cases out of 122159



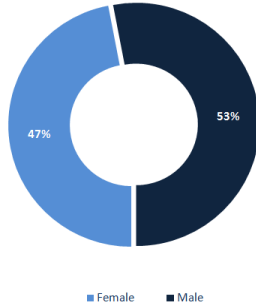
Number of individuals in home isolation and percentage of commitment to isolation



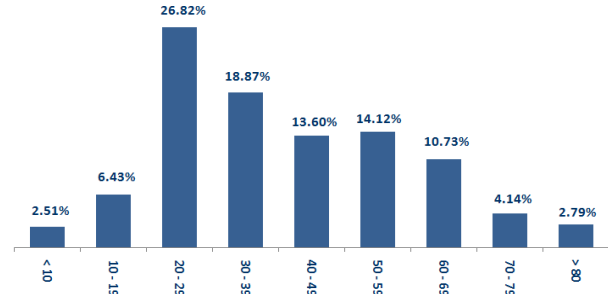
All reports and related decisions can be found at: <http://drm.pvm.gov.lb>

Or social media @DRM_Lebanon

Distribution of cases by gender

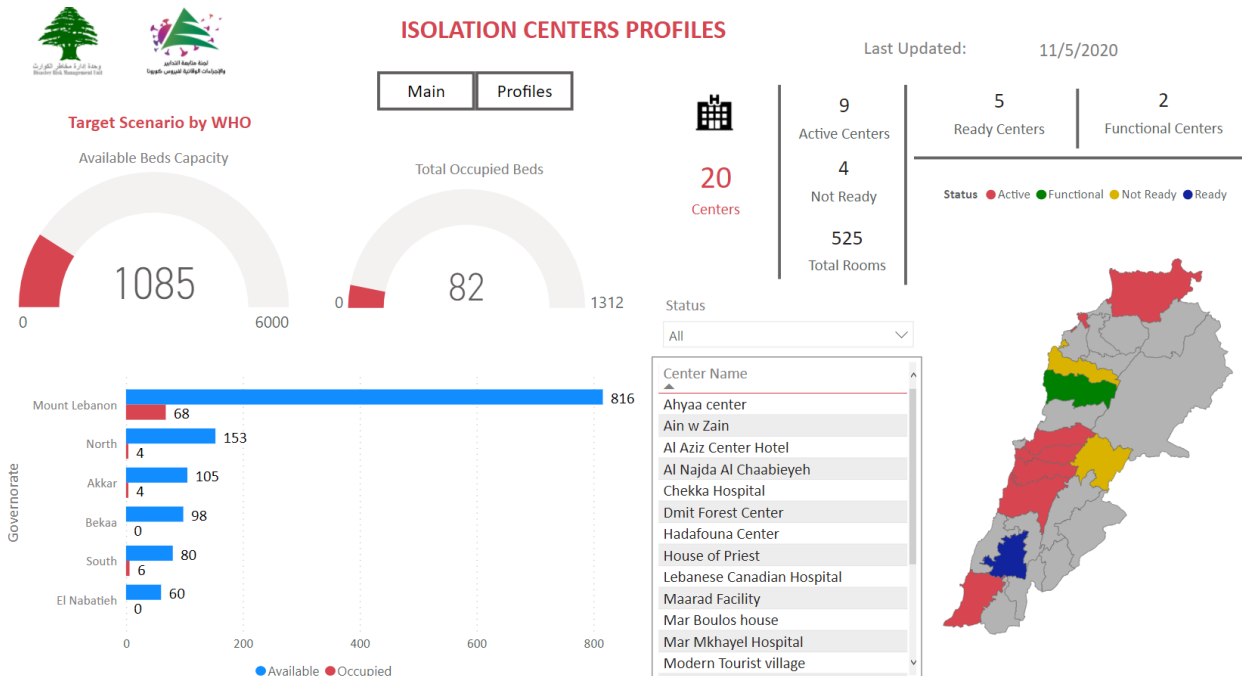


Distribution of cases by age



Occupancy rate of isolation centers for cases infected with Coronavirus

For more information about the isolation centers' distribution and the percentage of their occupancy, enter the following link: <http://bit.ly/DRM-IsolationCentersProfiles>



All reports and related decisions can be found at: <http://drm.pvm.gov.lb>

Or social media @DRM_Lebanon

Decisions and actions taken – 11/26/2020

Ministry of Public Health

- Within the context of the Ministry of Public Health's plan to increase the number of intensive care beds in Corona departments in governmental hospitals in various Lebanese regions, the Minister of Public Health conducted a field inspection in both Hasbaya Governmental Hospital and Rashaya Governmental Hospital to keep up with their provision of special sections for new Corona cases.

-The scientific committee formed by the Minister of Public Health to follow up with COVID-19 vaccines is intensifying its work to prepare a mechanism for approving, registering, receiving and distributing vaccines, monitoring side effects, monitoring the cold chain and everything related to maintaining the quality of the vaccine, in addition to determining the groups that will benefit from the vaccine in the first phase. The committee is also studying the awareness plan and training programs for medical teams that will implement vaccination campaigns in various Lebanese regions

.-The results showed that there were (20) positive cases distributed over the following flights:

Date	Company	Country	Flight Number	Number of Cases
11/22/2020	MEA	Baghdad	323	1
	Turkish	Istanbul	826	1
	MEA	Istanbul	268	12
	PEGASUS	Istanbul	863	1
11/23/2020	Ethiopian	Adis Ababa	406	1
	Turkish	Istanbul	828	1
	MEA	Istanbul	266	2
	PEGASUS	Adana	6700	1
Total				20

Lebanese Red Cross

Cases transferred to the hospital	8,825 (59 New)	Ambulance centers	48	Number of additional ambulance centers ready to respond	56,633 (862 New)	Number of PCR tests transferred to laboratories	239,571
Number of being benefitting from awareness sessions	108,331 (36 New)	latot number of respondents	8,878 (8 New)	Number of trained paramedics	1,498	Number of volunteers trained to transfer PCR tests	166
Number of trained managers for isolation centers	8,833 (10 New)	CRL latot volunteers for covid 19	550	Number of university volunteers trained to conduct awareness sessions	291	The number of university volunteers trained to follow up on prevention measures in companies and institutions	967
Number of prisons that has been disinfected	914 (13 New)	Total distributed posters, brochures, and flyers on covid19 prevention	1,256,362	Number of distributed equipment	263,139 (201 New)	Number of beneficiaries from educational electronic platforms COVID-19	4,709 (5 New)

Lebanese Army Forces

- The army units continue to distribute social aid (400,000 Lebanese pounds) to families with limited income in all Lebanese territories.
- Distributing financial aid to public drivers and people with special needs
- The Lebanese army helicopters dropped leaflets to raise awareness of the Corona virus and abide by the stone
- Distributing food aid in various Lebanese regions through the CIMIC Office.
- Establishing circumstantial barriers in various regions and supporting the Internal Security Forces in implementing the general closure decision in the country

All reports and related decisions can be found at: <http://drm.pvm.gov.lb>

Or social media @DRM_Lebanon

General Directorate of Internal Security Forces

The Internal Security Forces in all governorates and regional directorates organized patrols and circumstantial checkpoints

The number of seizure records during the past 24 hours					The total number of records since 03/08/2020		
Written records of cars that violate Even / Odd decision					434		
Written records of violating institutions (absorptive capacity and preventive measures)					15		
Written records of violating persons (curfew, social distancing ...)					405	Beirut	33063
Written records of persons violating the decision to wear a mask					201	Mount Leb	37431
Total					1055	Beqaa	15216
Beirut	Mount Leb	Beqaa	North	South	South	North	12155
281	385	162	71	156	Total	South	12399
						Total	110264

General Directorate of State Security

- Patrolling and setting up observation points in Beirut, Mount Lebanon, Bekaa, South, Baalbek-Hermel, Nabatiyeh, and Akkar directorates, with the aim of monitoring the implementation of the general mobilization decision, as a number of minutes were written against violators and the closure of shops and institutions not covered by exceptions
- 66 State Security personnel were reported to have been infected with the Coronavirus
- Reporting the percentage of compliance with the general mobilization decision in the governorates, which came as follows within the past 24 hours:
-

Beirut	South	North	Akkar	Beqaa	Nabatiyeh	Baalbek Hermel	Mount Leb
87	86%	75%	70%	73%	90%	65%	87%

General Directorate of General Security

- Reporting cases of Coronavirus in various governorates
- Reporting the death of two women and two men from BintJbeil, Marjayoun, Akkar and Tire, due to the Corona virus
- Reporting the percentage of commitment to implement General Mobilization Decision No. 1432

Commitment ratio	South & Nabateih	Beirut	North & Akkar	Beqaa & Baalbek Hermel	Mount Lebanon
Lock-Down	85%	90%	61%	78%	90%
ODD-Even	66%	N/A	59%	75%	85%

Ministry of Public Works and Transportation

Beirut Raffic Harriri International Airport:

Departing Flights		Arriving Flights	
Number of Flights	36	Number of Flights	38
Number of Departing Individuals	2,642	Number of Arrivals	3568

Ports:

Port	Left			Entered		
	Export	Direction	#	Import	Direction	#
Beirut	Empty	Greece	1	Containers	Iskandariya	1
Total	1			1		

All reports and related decisions can be found at: <http://drm.pvm.gov.lb>

Or social media @DRM_Lebanon

The recommendations of the Committee for Follow-up of Preventive Measures and Measures of Coronavirus were issued after its meeting on 11/17/2020. The meeting was chaired by the Secretary General of the Supreme Defense - Council and attended by advisors to the Presidency of the Republic and the Presidency of the Council of Ministers and representatives of the Ministries of Public Health, Interior and Municipalities, the President of Beirut's Doctors Syndicate, the Hospital Owners Syndicate, the Syndicate of Nurses, the Lebanese Red Cross, and a number of specialist doctors. The most prominent of what was mentioned in the recommendations:

Syndicate of Private Hospitals in Lebanon:

- Providing the committee with the data of the PCR examinations that were performed in its laboratories and the percentage of positive cases as of 01/11/2020
- Providing the committee with a list of normal beds and intensive care beds designated for corona patients within two weeks of its date, via e-mail: sawsan.bou-fakherddine@undp.org
- Syndicate of Private Hospitals in Lebanon:

1- Circular to all private hospitals to deposit the Ministry of Economy and Trade a list of insurance companies that do not cover Corona patients who receive treatment in the hospital and have a health insurance contract with these companies.

2- Provide the committee with the data it has as of 11/1/2020 related to the PCR examinations that were conducted for people and patients in its laboratories (before admission, before performing surgeries, before performing the endoscopy) in addition to the percentage of positive cases to the total of those examinations mentioned.

3- A list of beds (normal / intensive care) assigned to private hospitals for Corona patients ready and planned to be processed within two weeks of its date.

By email: Sawsan.bou-fakherddine@undp.org.

- World Health Organization: Presenting a simulation of the health situation and the epidemic in Lebanon to the Committee for Follow-up of Preventive Measures and Measures of Corona virus.
- The Ministry of Interior and Municipalities issued Decision No. 1432 on 11/12/2020 related to the implementation of the Supreme Defense Council's decision to close to confront the rise in Corona injuries, from 11/14/2020 to 11/30/2020. The main highlights of the decision:
 - Preventing going out and entering the streets and roads every day from five in the evening until five in the morning of the next day.
 - The movement of tourist vehicles (private) is restricted, except for public cars, rented cars, motorcycles, trucks and tanks of all kinds, as follows:
 - Monday, Wednesday and Friday: Cars with Odd license plates.
 - Tuesday, Thursday, Saturday: Cars with Even license plates.
 - Sunday: It is prohibited to walk around all types of cars, including rental cars, trucks and motorcycles
 - Determining the number of passengers permitted in public and private transport mechanisms, with mandatory wearing of the mask, as follows:
 - Public cars: 4 people, with a driver.
 - Private cars: 4 people maximum with the driver for family necessities.
 - Shared transport mechanisms: half the number at the maximum.
 - Cargo transport trucks: the driver is with one person, provided that the porters are transported with separate vehicles according to the above conditions.
 - Motorcycles (except Sidon): one person on a bike, and motorbike marches are prohibited.
 - Determining the opening times of the economic and commercial sectors in all Lebanese regions that are excluded from the closure decision according to the decision issued by the Supreme Council of Defense: health sector institutions, ministries and public administrations, health and food sectors, Lebanon Electricity Corporation, Lebanon water institutions, Ogero and cellular companies, oil installations Governmental and private sector, the central bank and its branches, social security and state employees' cooperative in all its branches, administration of tobacco and tobacco inventory, approved distributors, factories, Media institutions, municipal centers, Rafic Hariri International Airport, sea ports, hotels and furnished apartments, private financial and commercial institutions such as banks and money transfer companies, express mail, gas stations, gas filling and distribution companies, money transportation companies, United Nations organizations, travel visa application centers approved by Foreign embassies, construction workshops (internal work exclusively), libraries.

- Workshops for the restoration and reconstruction of apartments and buildings damaged by the explosion of the Beirut port and located in the vicinity of Beirut and BourjHammoud are exempt from the provisions of this decision and are permitted to work in accordance with the provisions of Article 1 specified in the decision
- The employees of the General Directorate of the Presidency of the Republic, the General Secretariat of Parliament, the Presidency of the Council of Ministers, the Ministry of National Defense, the Ministry of Interior and Municipalities, the military and health sector employees, workers in the diplomatic corps, the media personnel, are exempted from the provisions of the first and second articles of the decision. The port, employees of service providers in the EDL and water establishments, mill workers and sweeping and waste collection companies, Military vehicles, civil defense mechanisms, municipal police, the Lebanese Red Cross, ambulances and the medical apparatus, mechanisms of the diplomatic corps, the United Nations, the media and the media, cranes, transport and towing vehicles, vehicles for people with special needs, arrivals and departures and those who take them to and from the airport, provided they have a photo About the ticket
- Adopting job cards to prove the identity of the excluded persons during their transportation to and from their work centers.
- Bars, cafes, night discos, sports clubs, stadiums, indoor and outdoor swimming pools remain closed, and all public and private parties, all sporting activities, all social events and gatherings of all kinds, the sea corniche, public parks, major shopping centers, the Casino of Lebanon, video halls and electronic games are stopped. Popular markets, in coordination with the religious authorities to close places of worship and cancel religious events.
- Note: The full decision can be found at: <http://drm.pcm.gov.lb>

Examples of lack of adherence to safety measures

- Violations of the Ministry of Interior Decision No. 1432: promenade on the sea corniche, violations of authorized and single motor vehicle traffic, and violations of commercial establishments and stores that did not adhere to the decision.
- Failure to comply with the preventive measures and procedures required in a number of stores and markets (putting on a mask or face mask, sterilizing hands, maintaining a safe distance).
- Failure of those in contact with confirmed cases to adhere to home isolation procedures until the results of the laboratory tests are issued.

If you feel any symptoms, directly call the hotline of the Ministry of Public Health: 1214 or 01/594459

Laboratories that did not comply with the procedures approved by the MoPH About the information required to be recorded for infected cases within the past 24 hours

Laboratories that did not specify the Governorate	
Laboratory/Hospitals	Cases
BDL003-Laboratoire Inovie / Fayyadieh	48
BDH505-Rafic Hariri University hospital	34
ZHH230-Hospital Riyak	9
BDL002-Hadi Laboratory/ Haret Hreik	4
BRH610-Hospital American university	4
BRH636-Hospital LAU Medical Center / Rizk	4
BDH558-Hospital Sacre Coeur	3
BDL006 - Beirut International Airport	1
BRH637-Hospital Haddad	1
BRH639-Hospital Saint Georges Orthodoxe	1
BRL010 - Jabra Ghorra Laboratory	1
CHH511-Hospital Ain wa Zain	1

Number of positive cases without specifying the place of residence	
Laboratory/Hospitals	Cases
BDL003-Laboratoire Inovie / Fayyadieh	50
BDH505-Rafic Hariri University hospital	35
BRH610-Hospital American university	17
BRH639-Hospital Saint Georges Orthodoxe	11
BDL002-Hadi Laboratory/ Haret Hreik	9
ZHH230-Hospital Riyak	9
BDH562-Hospital Mont liban	8
BRH636-Hospital LAU Medical Center / Rizk	4
BDH558-Hospital Sacre Coeur	3
JBL001-Laboratoire Akiki et Boulos	2
NBH316-Hospital Ragheb Harb	2
ZHH225-Hospital Mayas / Zahleh	2
BDL006 - Beirut International Airport	1
BRH630-Hospital Geitawi	1
BRH637-Hospital Haddad	1
BRL010 - Jabra Ghorra Laboratory	1
CHH511-Hospital Ain wa Zain	1

Number of positive cases without a phone number	
Laboratory/Hospitals	Cases
BDL002-Hadi Laboratory/ Haret Hreik	3
BDH558-Hospital Saint Georges Hadath	1
BDL006 - Beirut International Airport	1
BRH630-Hospital Geitawi	1

All reports and related decisions can be found at: <http://drm.pvm.gov.lb>

Or social media @DRM_Lebanon

A list of the laboratories accredited by the MoPH to conduct PCR tests

Governmental Labs

المختبر	الموقع
RHUH	بيروت
Halba Governmental	حلبا
Tripoli Governmental	طرابلس
Batroun Governmental	البترون
Fetouh Keserwan	كسروان
Nabih Berri Hosp	النبطية
Tebnine Governmental	تبنين
BintJbeil Governmental	بنت جبيل
Baalback Governmental	بعلبك
Elias Herrawi Governmental	زحلة

Private Labs

المختبر	الموقع
AUBMC	بيروت
Hôtel Dieu de France	بيروت
Laboratoires Rodolphe Mérieux (Université Saint-Joseph)	بيروت
George-Saint UMC Hospital	بيروت
General Makassed Hospital	بيروت
LAU Medical Center - Rizk Hospital	بيروت
CHU - GeitawiLibanais Hospital	بيروت
Hôpital Notre-Dame du Rosaire	بيروت
Doctors' Center	بيروت
Fontana Laboratories	بيروت
General Security Laboratories	بيروت
Ghorra-Jabre Laboratories	الأشرفية
Saint Marc Medical & Diagnostic Center	الأشرفية
Laboratories HML	فرن الشباك
Laboratoire Moderne (Modern Lab.- Berjaoui)	الغبيري
Sahel General Hospital (SGH)	الغبيري
Al Zahraa Hospital	الغبيري
Al Rassoul Al Aazam Hospital	بئر حسن
Bahman Hospital	برج البراجنة
National Diagnostic Services Company (NDSC)	حارة حريك
Center Diagnostic Medical	حارة حريك
ADC (Center Diagnostic American)	المرجبة
Mount Lebanon Hospital	الجناح
Hadath – George-Saint Hôpital	بعيدا
Laboratory Al Hadi	بعيدا
INOIE	بعيدا
Sacré - Coeur Hôpital	بعيدا
Clinigene	الحازمية
Dr. Samir Serhal Hospital	الحازمية
Life for Trans medical	المتن
	المتن
	المتن
	المتن

All reports and related decisions can be found at: <http://drm.pvm.gov.lb>

Or social media @DRM_Lebanon

Haroun Hospital	مستشفى هارون	الزلفا
Bellevue Medical Center (BMC)	مستشفى بلفو	المنصورية
Haykal Albert Hôpital	مستشفى هيكل	الكورة
Centre Hospitalier du Nord (CHN)	مركز الشمال الاستشفائي	زغرتا
Mazloum Hospital	مستشفى المظلوم	طرابلس
Al Mounla Hospital	مستشفى المنلا	طرابلس
Nini Hospital	مستشفى النيني	طرابلس
LMSE	مختبر ميكروبيولوجيا الصحة والبيئة، المعهد العالي للدكتوراه، الجامعة اللبنانية	طرابلس
Secours des Dame-Notre – CHU	مستشفى سيدة المعونات الجامعي	جبيل
Boulos & Akiki Lab	مختبر عقيلي وبولس	جبيل
Wakim Centre Médical	مختبر واكيم	جونية
Hospital Wzein Ain	مستشفى عين وزين	الشوف
UMC Hospital Hammoud	مستشفى حمود الجامعي	صيدا
Al Karim Medical Laboratory (KML)	مختبر الكريم	صيدا
Hospital HarbRagheb Sheikh	مستشفى الشيخ راغب حرب	النبطية
SDC (Center Diagnostic Sabbah)	مختبر الصلح	النبطية
Jabal Amel Hospital	مستشفى جبل عامل	صور
Mashrek Diagnostic Center (MDC)	مختبر المشرق	صور
Hospital University Dar Al Amal	مستشفى دار الأمل الجامعي	بعلبك
	مختبرات العناية الطبية	بعلبك
	مختبرات العناية الطبية	اللبوة
Hospital General Khoury	مستشفى خوري	زحلة
MCC (Center Care Medical)	مختبر ميديكال كير سنتر	زحلة

مختبرات المستشفيات العسكرية

Hôpital Central Militaire	المستشفى العسكري المركزي في بيروت	بيروت
---------------------------	-----------------------------------	-------

المختبرات المؤهلة لأخذ عينات "المسحات الأنفية" بطريقة Drive-Thru

Medical Diagnostic Treatment Center (MDTC)	مختبر ميديكال دياغنوسيك تريمانت سنتر (الحمراء)	بيروت
ALS CIC SAL Med-Lab	مختبر ميد لاب الحمراء – الجفینور	بيروت
Ifani Medical Laboratories	مختبرات عيتاني	بيروت
ABC Laboratories	مختبر أ ب سي	الأشرفية
Mouawad Medical Laboratory	مختبرات معوض الطبية	الشياح
Rihan Medical Center	مختبرات الشياح (د. فؤاد ریحان)	الشياح
Lab Expert	مختبر إكسبرت لاب	المنصورية
LAB Life	مختبر لايف لاب	بعلبك
Rayyak Hospital	مستشفى ریاق	ریاق