



Lebanon National Operations Room Daily Report on COVID-19

Sunday, October 25, 2020

Report #221

Time Published: 10:30 PM

New in the report:

- The Ministry of Interior and Municipalities Decision No. 1336 of 10/25/2020 regarding the continued closure of some villages and towns due to the high number of corona injuries in them.

1,400 New Cases		71,390 Total Cases since 21.2.2020		565 Total Deaths		34,803 Total Recovered	
1,400 Residents	0 Expats	69,195 Residents	2,195 Expats	3 New Deaths		1,265 New Recovered	

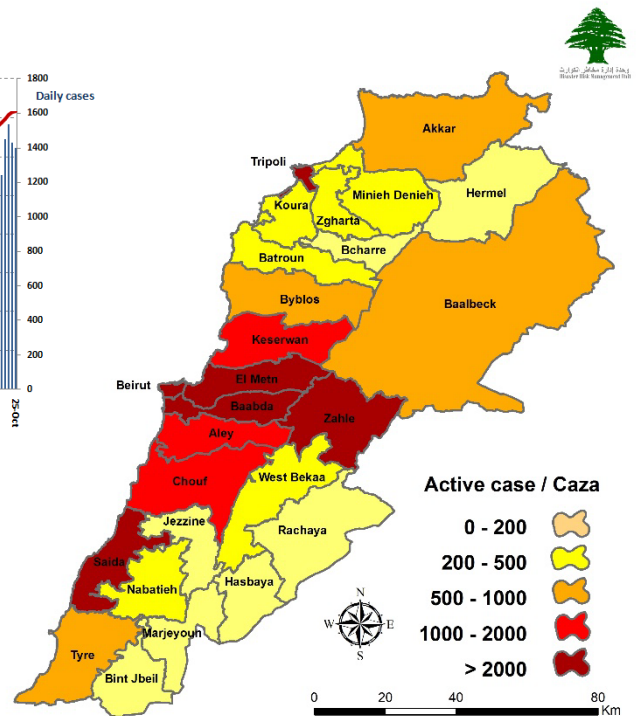
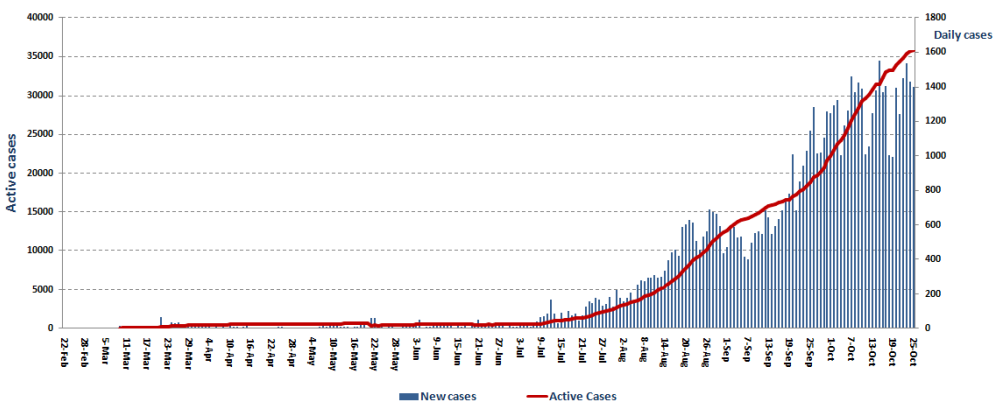
158 Deleted Status due to its recurrence	1,337 Total Cases in the Health Sector	36,022 Total Active Cases	716 Hospitalized Cases	247 Total Cases in ICU
	2 New Cases in the Health Sector	35,306 Cases in Home Isolation	469 Mild Cases	3 New Cases in ICU

1,098,868 COVID-19 Tests since 21.2.2020	Lebanon Status compared to the World			
	1,203 COVID-19 Tests at Airport within 24 hrs.	11,183 COVID-19 tests for residents within 24 hrs.	Total Cumulative	71,390
		Total Deaths	565	1,157,350
		Deaths percentage	0,79%	2.68%
		Total recoveries	34,803	31,810,104

Ref: Ministry of Public Health Data

Number of Cases by Location

- 12,653 case is Under investigation



Beirut	234
Ein El Mreisseh	2
Hamra	2
Mseitbeh	1
Wata El Mseitbeh	1
Tallet El Drouz	1
Mazraa	1
Borj Abi Haidar	1
Tariq Jdeedeh	4
Ras El Nabaa	2
Bashoura	1
Basta Tahta	2
Majeedieh	1
Ashrafieh	11
Others	204
Baabda	161
Chiah	8
Jnah	2
Ouzai	3
Bir Hassan	4
Sfeir	1
Ghobeiry	5
Ein El Rimmaneh	9
Haret Hreik	24
Lailaky	6
Borj Al Brajneh	20
Mreijeh	5
Tahweetet Ghadir	4
Baabda	1
Hazmieh	3
Hadat	6
Wady Shahrer Olya	1
Bsaba	1
Ras Al Matn	1
Hammana	2
Bzebdine	1
Others	54
Aley	30
Choueifat	1
Al Amrousieh	6
Hay El Sillom	7
Haret AL Amrousieh	1
Al Oumara	2
Aramoun	3
Bleibel	1
Bdadoun	1
Aley	1
Kahaleh	2
Blat -Selfaya	1
Mecherfeh	1
Others	3
Koura	5
Kosba	1
Dahr El Einm	2
Zghorta Al Mtawleh	1
Others	1

Zahleh	133
Zahle	3
Rassieh	4
Maallaqa	2
Karak Nouh	5
Hoch Al Oumara	7
Arady	5
Mar Elias	2
Forzol	4
Hazzarta	1
Qaa El Rim	1
Ksara	10
Wady Al Arayesh	3
Chtoura	2
Jlala	3
Makseh	7
Taalabaya	5
Jdita	3
Taanayel	1
Saadnayel	3
Qab Elias	8
Mreijat	2
Bar Elias	5
Anjar - Hoch Mous	2
Majdel Anjar	3
Riyak	21
Ali Al Nahry	2
Tal Amara	1
B'eet	1
Terbol	4
Kfar Zabad	2
Others	11
Western Beqaa	27
Mashghara	1
Kherbet Kanafar	1
Kefraya	1
Jeb Jennine	5
Kamed Al Loz	5
Ghazze	2
Qar'oun	1
Hoch Al Harimeh	1
Sweiry	1
Suhmor	3
Marrej	3
Rawda - Estabel	1
Others	2
Zghorta	17
Zghrta	5
Kfardlakos	1
Rash'een	1
Majdlayya	3
Khaldieh	1
Kfar Zina	1
Bshannine	2
Seb'el	1
Others	2

Kesrwen	57
Jounieh	5
Sarba	3
Zouk Michael	6
Nahr El Kalb	1
Zouk Mosbeh	2
Haret Sakher	1
sahel Alma	2
Kfar Yassine	1
Tabarja	6
Adma & Dafneh	3
Bouar	2
Nahr El Kalb	1
Ajaltoun	1
Ballouneh	4
Ghazir	5
Borj Al Ftouh	3
Ghosta	1
Dlebta	1
Hayyata	2
Jouret El Termos	1
Feitroun	1
Kfardebian	1
Faraya	2
Others	2
Byblos	30
Byblos	3
Mastita	2
Blat	1
Amshit	3
Halat	3
Hay I Baalbakieh	1
Hosrayel	1
Jedayel	1
Nahr Ibrahim	2
Monsef	1
Ehmej	2
Torza	1
Bshally	1
Bentael	1
Shamat	1
Hboub	1
Yanouh	1
Aqoura	1
Others	3
Tripoli	73
Zaytoun	3
Haddadine	7
Tal	1
Qebbeh	9
Zahrieh	3
Mina 1	2
Bsatine Al Mina	2
Qalamoun	3
Beddawy	6
Beddawy Camp	3
Others	34

Matn	142
Borj Hammoud	14
Sin El Fil	2
Jdeidet El Metn	9
Bouchrieh	7
Dora	4
Rawda	3
Sabtieh	4
Dekwaneh	9
Antelias	5
Jal El Dib	2
Naqqash	2
Zalqa	5
Byaqout	5
Dbayyeh	3
Mansourieh	5
Fanar	7
New Fanar	1
Wein Saadeh	3
Roumieh	9
Bsalim	8
Mteileb	3
Rabieh	1
Rabwe	1
Beit Al Chaar	4
Deek El Mahdy	1
Ein Aar	1
Bekfayya	1
Beit Shabab	1
Broummana	1
Rweiseh	1
Jouret EL Ballout	1
Qannbt Bromana	1
Aintoura	1
Majdel Tarsheesh	1
Baskinta	5
Others	11
Chouf	33
Damour	3
Naameh	1
Chhim	8
Ketermaya	1
Sibline	1
Barja	1
Baaseer	1
Wady El Zayneh	1
Joun	2
Baqaata	3
Jbaa	1
Others	10
Batroun	5
Batroun	1
Sel'aata	1
Shekka	3
Bcharre	1
Hadath Al Jebbeh	1

Akkar	24
Halba	2
Old Akkar	2
Kweikhat	1
Kfar Melky	1
Bebnine	1
Nahr Al Bared	4
Berqayel	1
Meshmesh	2
Andkit	1
Others	9
Nabatieh	38
Nabatieh AL Tahta	4
Nabatieh AL Fawka	1
Mazraet Kfar EL Joz	1
Zebdine	1
Habbouch	2
Kfar Tebnite	2
Ein Bosoir	1
Sarba	2
Houmine Al Fawka	1
Deir Al Zahrany	1
Sharkieh	1
Jebshit	2
Meifadoun	1
Ansar	1
Western Zoutar	1
Eastern Zoutar	1
Qaaqaa'iet El Jesr	1
Others	14

Baalbeck	116
Baalbek	67
Sharawneh	2
l'aat	1
Nahle	3
Jdeidet El Fakha	1
Al Ein	1
Arsal	1
Younine	1
Deir Al Ahmar	1
Beit Chama	4
Hoch AL Rafqa	4
Temnine Al Tahta	6
Tarayya	2
Ser'een Al Tahta	9
Al Khader	1
Naby Sheeth	1
Hor Taala	1
Brital	2
Others	8
Hermel	2
Others	2
Rashayya	2
Rafeed	1
Others	1
Marjeyoun	8
Deir Seryan	1
Mais Al Jabal	3
Touline	3
Others	1

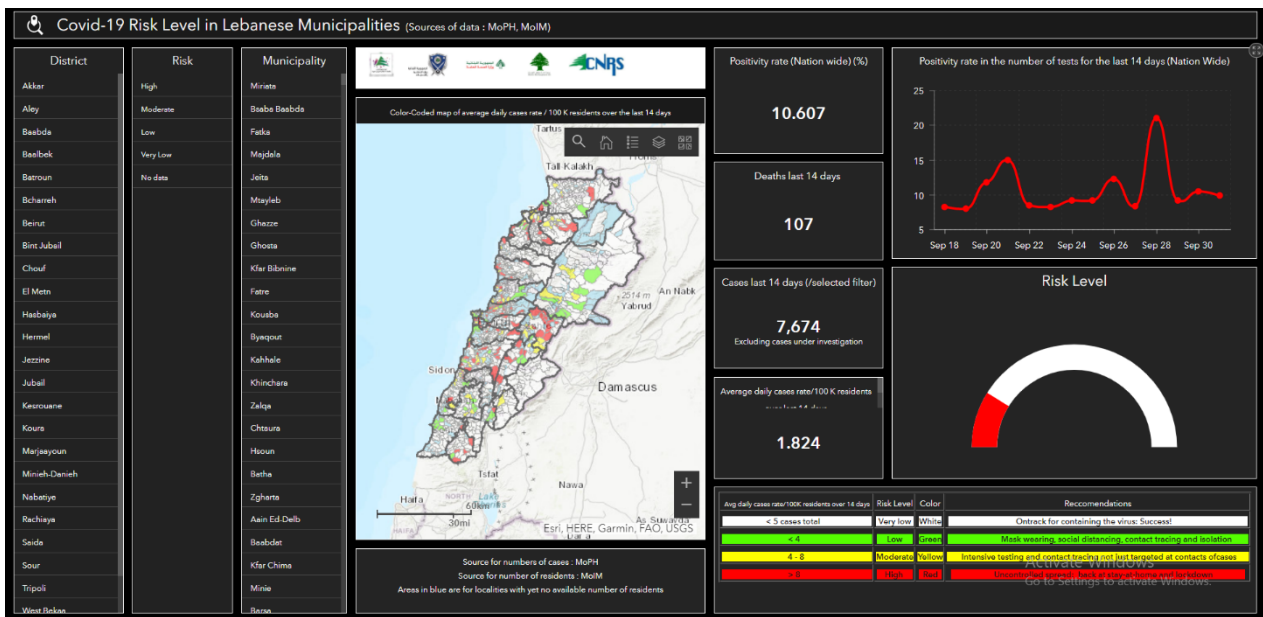
Tyre	46
Tyre	6
Bass	5
Maashouq	1
Borj Al Shemaly	4
Aiteet	1
Baflueh	1
Barish	1
Qana	4
Maarakeh	1
Reshknanieh	1
Saddiqine	2
Hennaway	1
Rmadieh	1
Hallousieh	1
Hallousieh Tahta	1
Abbasieh	3
Shiheen	1
Teir Hrfa	2
Others	9
Bint Jbeil	13
Bint Jbeil	1
Maroun Al Ras	1
Rmeish	3
Harees	2
Kounine	2
Kafra	1
Qalawayh	2
Debel	1

Saida	76
Old Saida	16
Hlalieh	1
Haret Saida	4
Ein El Helwe	4
Majdelyoun	1
Abra	3
Ein El Delb	1
Ghazieh	8
Maghdoushe	2
rariéh	1
Adloun	1
Ansarieh	1
Loubieh	1
Sarafand	6
KawtharetSeyyad	1
Saksakieh	2
Arab Tabbaya	1
Kfar Melky	1
Others	21
Jezzine	2
Others	2
Menyh Dunnyyeh	21
Menyeh	9
Seer Dunniyyeh	1
Bqarsouna	1
Beit Al Faqs	1
Malha	1
Zgharteghrine	1
Bakh'oun	2
Others	5
Hasbaya	2
Fardees	1
Sheb'aa	1

Others	102
--------	-----

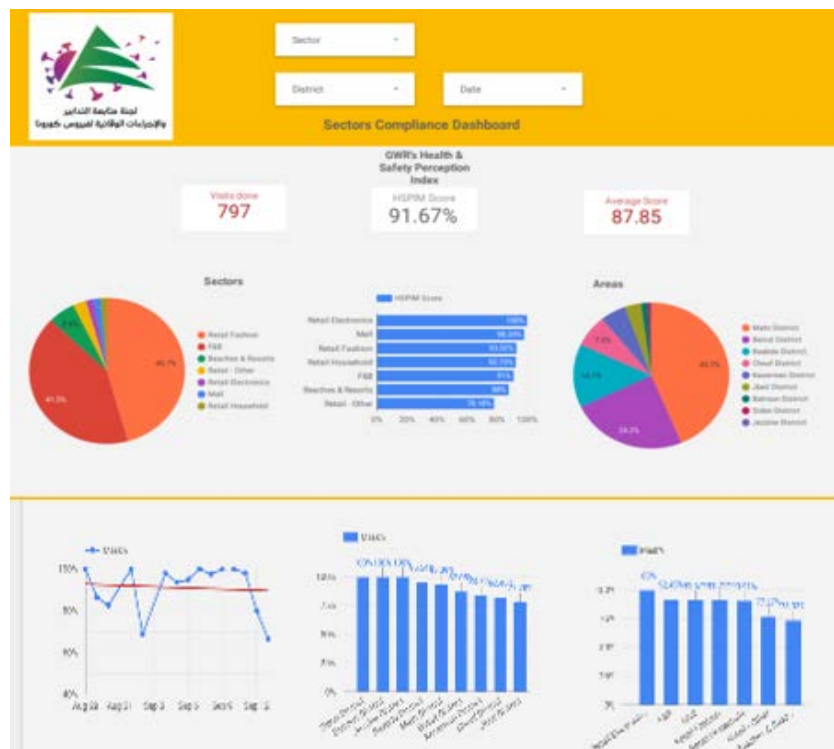
*102 Cases under verification due to the failure of several laboratories to provide the Ministry of Public Health with information about housing or the phone number of infected cases.

The Online platform to measure the level of risk of the spread of the new Corona virus



This interactive platform allows you to know the level of risk of spreading the kurna virus according to districts, based on the number of cases registered daily and the number of residents in each district. For more information on a daily basis, you can access the following link: <https://bit.ly/DRM-RiskLevelInMunicipalities>

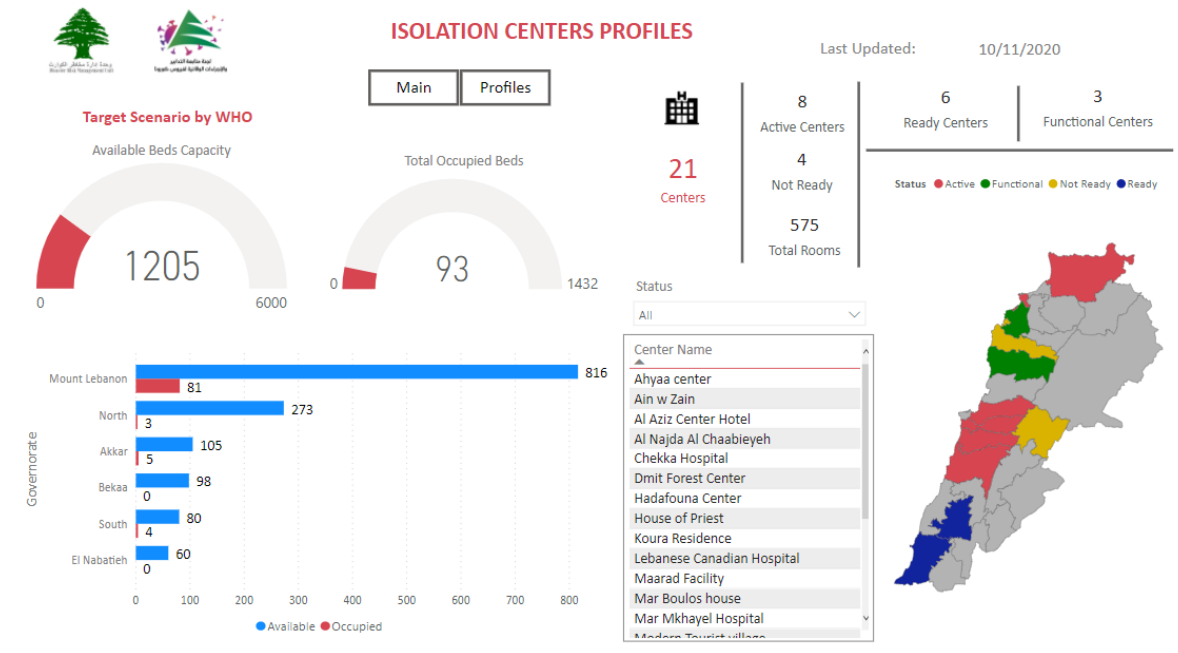
Online platform to track sector commitment in general mobilization procedures



Based on the recommendation issued by the National Committee for Follow-up of Preventive Measures and Measures to Confront the Coronavirus to open all sectors, provided that the general mobilization procedure (safe distance, muzzle, and hand sterilization) be applied, a special electronic platform was created that allows monitoring and measuring the percentage of commitment by various sectors on an ongoing basis.

The detailed results can be viewed directly at the following link: <http://bit.ly/covidsectordata>

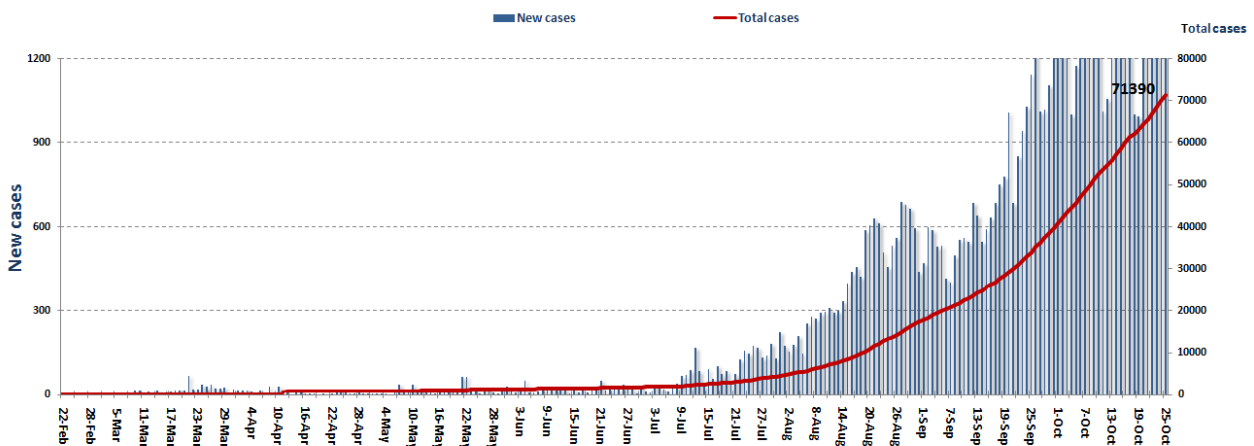
Occupancy rate of isolation centers for cases infected with Coronavirus



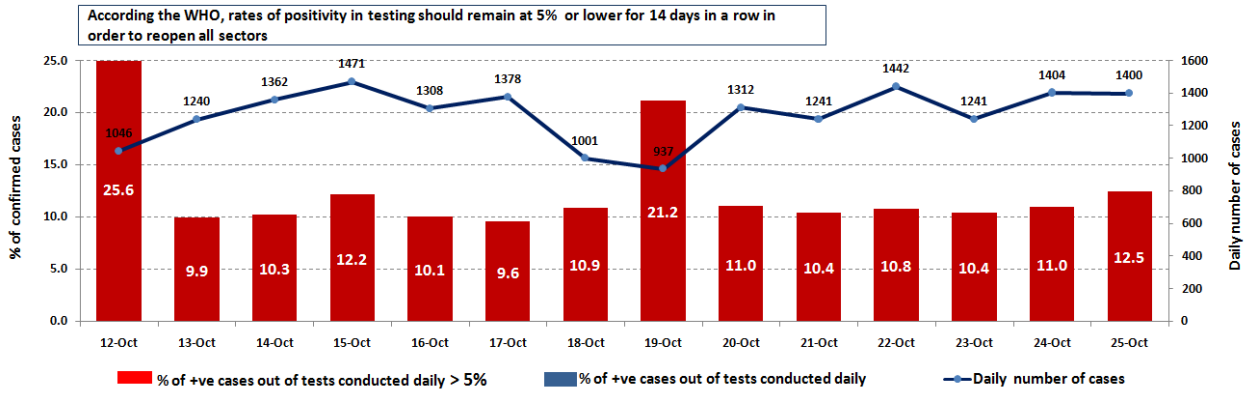
For more information about the isolation centers' distribution and the percentage of their occupancy, enter the following link: <http://bit.ly/DRM-IsolationCentersProfiles>

Note: These centers have been equipped in cooperation between the National Committee for Follow-up of Preventive Measures and Measures to Confront the Coronavirus and Governors and Municipalities, the United Nations Development Program, the World Health Organization, UNICEF, the Ministry of Public Health, the Syndicate of Nurses in Lebanon and the Syndicate of Specialists in Social Work.

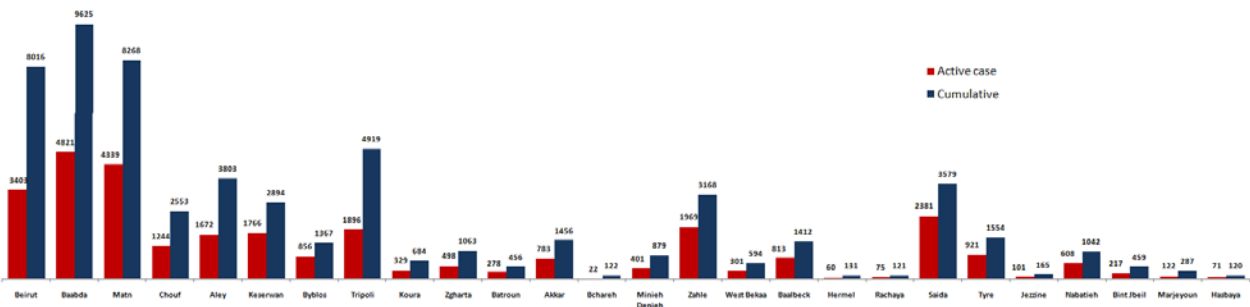
Cases per day



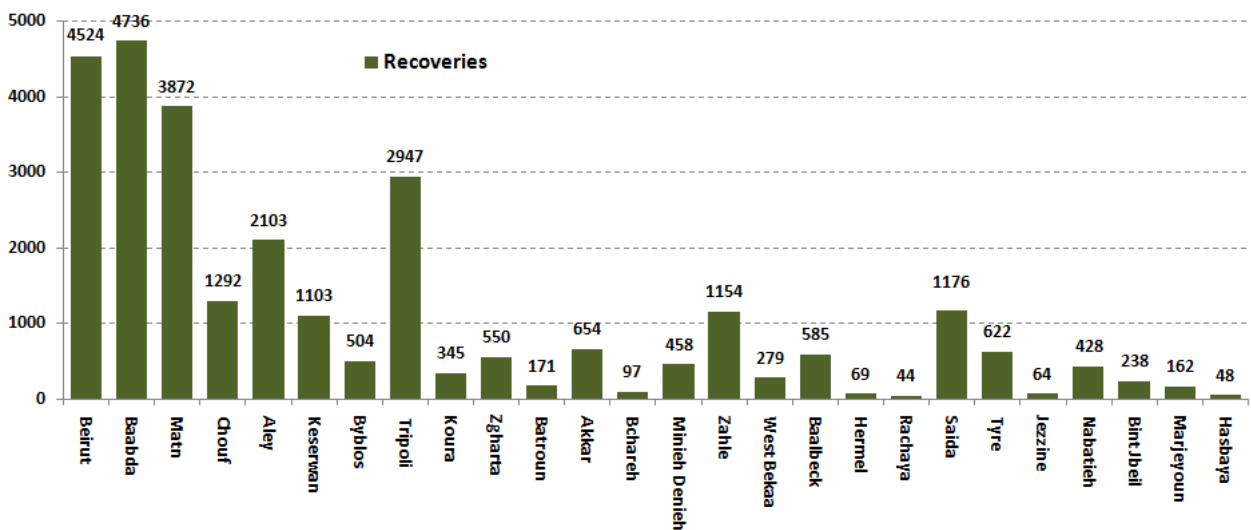
The percentage of positive cases out of the number of daily checks (12-25 Oct 2020)



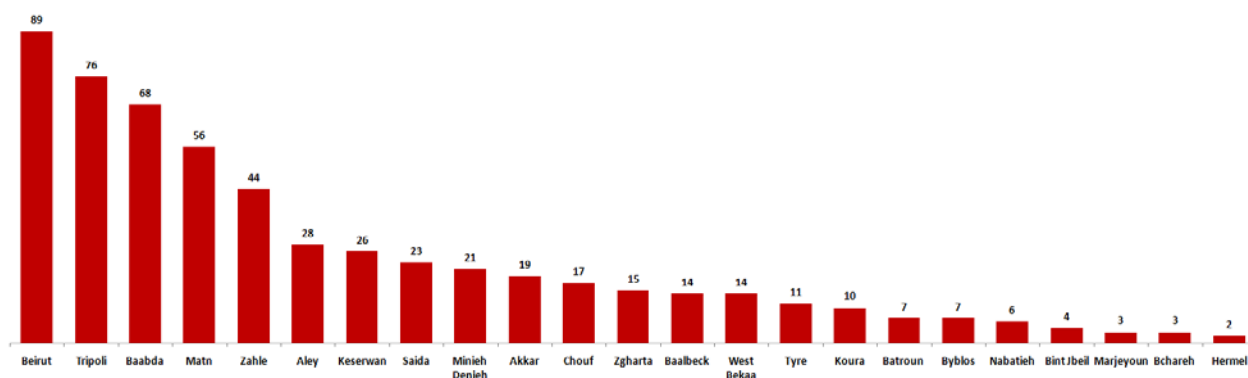
Distribution of Active Cases by Districts



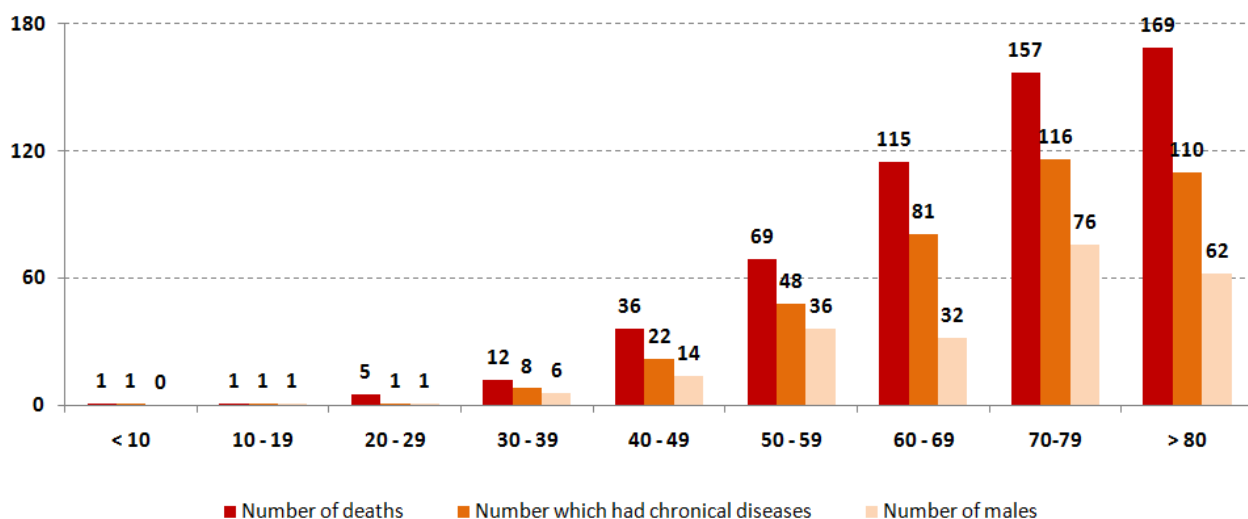
Recoveries



Distribution of deaths by Governorates



Distribution of deaths by Age

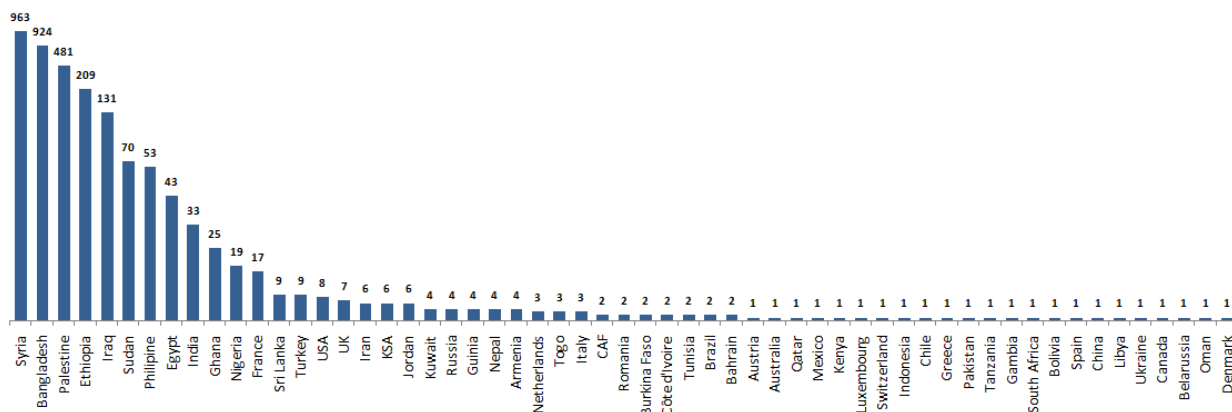


The distribution of the recorded deaths during the past 24 hours

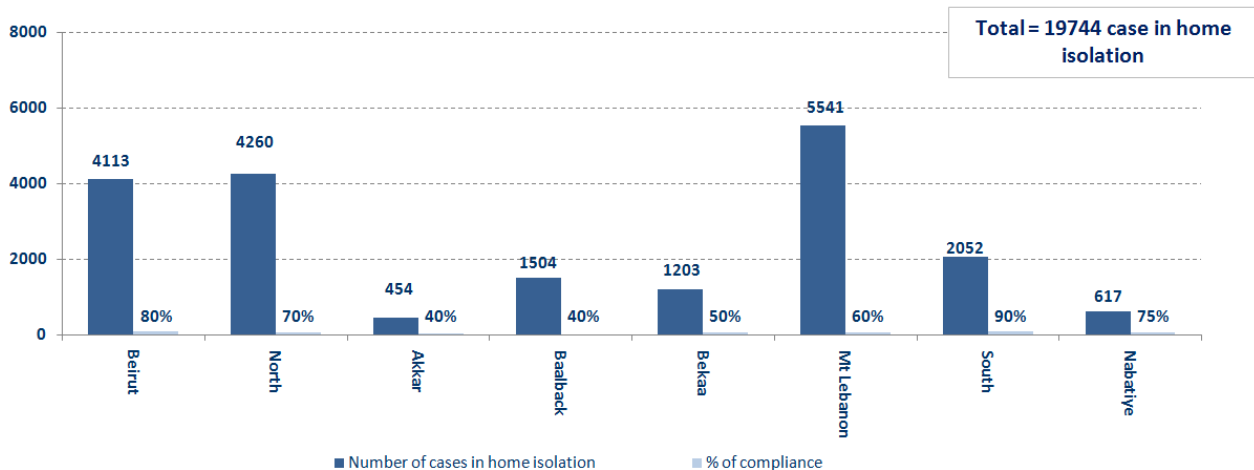
Hospital	Residence	Gender	Age	Chronic
AUBMC	Beirut	Female	74	Yes
AUBMC	Aleyh	Male	80	Yes
Saint George - Hadath	Aleyh	Male	76	Yes

Distribution of cases by nationality

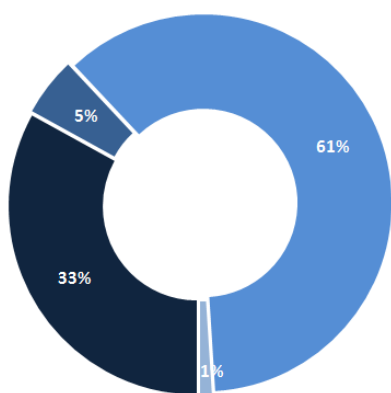
Lebanese : 68417 cases out of 71390 (88%)



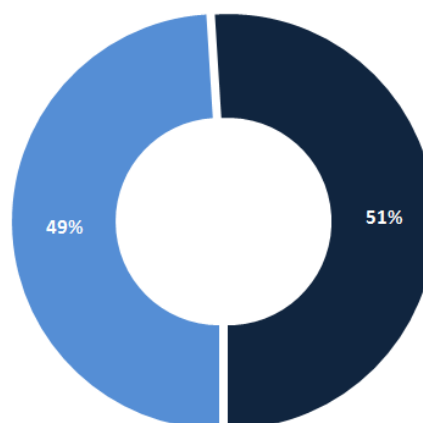
Number of individuals in home isolation and percentage of commitment to isolation



Exposure



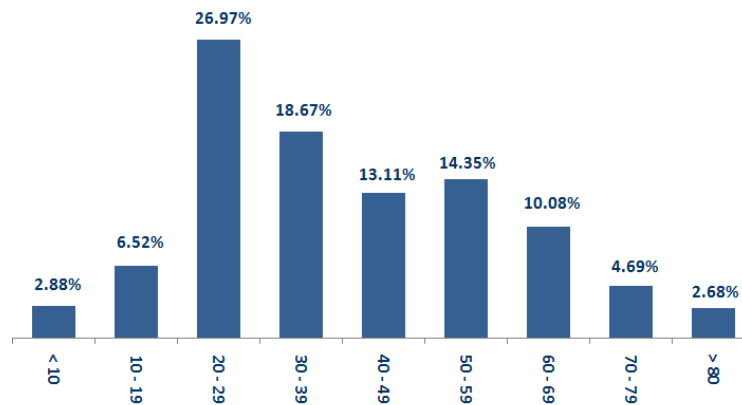
Distribution according to gender



■ Contact with confirmed case ■ Travel related ■ Under investigation ■ Unidentified source

■ Female ■ Male

Distribution by age



Decisions and actions taken – 10/25/2020

Ministry of Public Health

- The Ministry of Public Health is intensifying examinations in all Lebanese regions in order to determine the epidemiological reality in villages and towns, especially those with increasing numbers of injuries, in cooperation with the municipalities, the judiciary doctors and the security services.

- The Ministry of Public Health continues to implement its plan to increase the number of intensive care beds in government hospitals, and is working to secure the required funds to secure the medical equipment required to face the next stage.

Arriving from	Company	Flight Number	Number of Positive Cases
N/A			

Lebanese Red Cross

235,498	Number of PCR tests transferred to laboratories	52,396 (234 New)	Number of additional ambulance centers ready to respond	48	ambulance centers	6,955 (58 New)	cases transferred to hospitals
166	Number of volunteers trained to transfer PCR tests	1,498	Number of trained paramedics	8,772	total number of respondents	92,319 (665 New)	number of those benefiting from awareness *sessions
967	The number of university volunteers trained to follow up on prevention measures in companies and institutions	291	Number of university volunteers trained to conduct awareness sessions	550	total LRC volunteers for covid19	8,676 (15 New)	number of trained managers for isolation centers
4,350 (2 New)	Number of beneficiaries from educational electronic platforms COVID-19	259,626	Number of distributed equipment	1,246,602	total distriibuted posters, brochures, and flyers on covid19 prevention	687	number of rpisons that have been disinfected

General Directorate of Internal Security Forces

The number of seizure records during the past 24 hours					The total number of records since 03/08/2020	
Written records of violating institutions (absorptive capacity and preventive measures)					0	
Written records of persons violating the decision to wear a mask					1	
Written records of people violating the general mobilization decision (Aragil* and social distancing)					311	
Total					312	
					Beirut	21,508
					Mount Leb	20,878
					Beqaa	8,922
					North	7,573
					South	7,948
Beirut	Mount Leb	Beqaa	North	South	Total	66,829
46	184	53	9	20		

General Directorate of State Security

- Reporting an injury among the international emergency forces personnel in the ranks of the Spanish battalion in the Nabatiyeh district, where all the battalion's activities were suspended until 11/08/2020.
- Reporting the closure of a number of towns in the Bekaa Governorate, based on the decision of the Ministry of Interior and Municipalities, due to the high number of Coronavirus cases.
- Reporting the number of injuries to 65 in the General Directorate of State Security.
- Notification of the percentage of compliance with the general mobilization decision in the governorates, which came as follows within the past 24 hours:

Beirut	South	North	Akkar	Beqaa	Nabateih	Baalbek Hermel	Mount Leb
30%	51%	47.5%	36%	70%	87.5%	10%	43%

General Directorate of General Security

- The report that a member of the Internal Security Forces was infected with the Coronavirus in the ancient town of Akkar.
- Reporting the commitment of the municipalities to the decision of the Minister of Interior and Municipalities:

Municipalities that abided by the decision	Municipalities didn't abide by the decision
Kobayat (excluding Qalam al-Nufus, shops and private institutions), Haris, Habbouch, Shukin, Numairiya, Qakai'a al-Jisr, Ain Kafr Zabad, Taalabaya, Ablah, Jdita, Barej, al-Suwairi, Houmal, Blaybel, Badadoun, Bchamoun, Baakline, Ain Zhalta, Barouk , Orania, Kfarenberg	Al-Manara, Al-Rawda, the towns located in Iqlim Al-Kharroub

- Follow up the implementation of the required security and preventive measures at the airport, ports and border crossings.
- Reporting cases registered in the various districts and cases in home quarantine.

Ministry of Public Works and Transportation

Departing Flights		Arriving Flights	
Number of Flights	38	Number of Flights	41
Number of Departing Individuals	3,479	Number of Arrivals	4,847

Port	Entered			Left		
	Import	Direction	#	Export	Direction	#
Beirut	Oil	Turkey	1	Oil	Aamchit	1
	Containers	Lazqyeh	1			
	Wheat	Ukraine	1			
	Metals	Alexandrun	1			
Jbeil	Gasoline	Beirut	1	Blank	Turkey	1
Tripoli	Containers	Beirut	1	Blank	Port Said	1
	Blank	Dmeit	1			
Chekka				Fertilizers	Italy	1
				Blank	Ukraine	1
Total			7			5

General announcements

- The Ministry of Interior and Municipalities issued Decision No. 1336 of 10/25/2020 regarding the continued closure of some villages and towns due to the high number of corona infections in them, based on the recommendations of the small committee affiliated to the Committee for Follow-up of Preventive Measures and Procedures for Coronavirus. The main highlights of the decision:

- Continue to work with the timing of preventing exit and entering the streets between one o'clock in the morning until six in the morning.
- The continued closure of bars, cabarets and nightclubs, without exceptions, and under penalty of referring the violators to the judiciary, until further notice.
- The obligation to wear a mask, cover the mouth and nose, avoid gatherings, and maintain a safe distance.
- The decision to open or close educational institutions in towns and villages is restricted to the Ministry of Education and Higher Education only.
- Determining the number of people traveling by public and private transportation.
- Closing the following villages and towns with their names and all their official and private administrations and institutions and canceling all social events in them, provided that coordination is made with the religious authorities in terms of closing the places of worship in:
 - Baabda District: Al-Mardasha, Kfar Silwan
 - Metn District: Mansouriya, Al-Klys, and Daychounieh
 - Chouf District: Shehim, Daraya, Ktarmaya, Barja, Jiyeh, Zaarouriyeh, Jahiliya, Niha
 - Aley District: Ain Enoub, Homal, Baysour, Majdal Baana
 - Keserwan District: Ballouneh, Aintoura, and Al-Kfour
 - Jbeil District: Houboub, Balat, Amchit, Nahr Ibrahim Al-Munsif, Ehmej, and Apricot
 - Tripoli District: El Mina
 - Koura District: Ptoratij Zgharta District: Karabash, Majdalaya
 - Akkar District: Rahba, Hadat
 - Minieh-Denniyeh district: Taran, Bakhoun
 - Zahleh District: Qaa Al-Reem, Jdita, Ain Kafr Zabad, Kafr Zabad
 - West Bekaa District: Al-Manara
 - Baalbek district: Kafr ad-Din, Bednayel, Tamnin al-Fawqa, Tamnin al-Tahta, al-Nabi Shit
 - Sidon District: Al-Baramia, Haret Saida, Abra, Al-Hajjah
 - Tyre District: Monastery of Qanun Ras al-Ain, Yanouh, Maaroub, Siddiqin, Monastery of Qanun al-Nahr, Zebqine
 - Nabatiyeh: Homin al-Fawqa, Dweir, Ansar
 - Bint Jbeil: Rmeish - Katamon, Haris
 - Marjeyoun: Qlaiaa, Adaisse, and Kafr Kila
 - Hasbaya: Hasbaya and Fardis

- Some sectors (the health sector, the food sector and the industry sector), the media, gas and oxygen distribution warehouses, the Bank of Lebanon and its branches in all regions, social security and its branches, and municipal centers and their police, are excluded from the decision, within specific controls. Assigning governors to:
 - Defining the municipal zone in the major and interconnected towns that are mentioned in the closing clause Implementing this decision and requesting support from the Internal Security Forces when necessary.
 - Emphasizing the need for residents to adhere to public safety standards (masks, not walking around and mixing)
 - Request the district administrators to instruct the mayors to review the lists of positive cases daily on the IMPACT text with the aim of checking and correcting where necessary, in coordination with the Judicial Doctor and the Lebanese Red Cross.
- Assigning the General Directorate of Internal Security Forces to strictly enforce the decision and suppress violations, and to organize arrest records against violators.
- It is mandatory to call the emergency line 112 when any emergency occurs, and the citizen must move from his home.

Note: The decisions can be found at www.drm.pcm.gov.lb

Examples of lack of adherence to safety measures

Failure of some municipalities to abide by the Ministry of Interior and Municipalities Decision No. 1025/2020 related to the closure of towns that have a high risk of the spread of the epidemic.

- Demand gatherings and demonstrations.
- Failure to comply with the preventive measures and procedures required in several stores and markets (putting on a muzzle or face mask, sterilizing hands, maintaining a safe distance).
- Non-compliance with the 50% occupancy rate in several restaurants and amusement game centers.
- Gatherings for social events.
- Failure of those in contact with confirmed cases to adhere to home isolation procedures until the results of the laboratory tests are issued.

If you feel any symptoms, call directly the hotline of the Ministry of Public Health: 1214 or 01/594459

A list of the laboratories accredited by the MoPH to conduct PCR tests

المختبرات الحكومية المؤهلة إجراء التشخيص المخبري لفيروس كورونا بطريقة الـ RT-PCR

المختبر	الموقع
مستشفى رفيق الحريري الجامعي RHUH	بيروت
مستشفى حيا الحكومي	حيا
مستشفى طرابلس الحكومي	طرابلس
مستشفى البترون الحكومي	البترون
مستشفى قنوح كسروان الحكومي (اليوار)	كسروان
مستشفى نبيه بزّي الحكومي الجامعي	البيطنة
مستشفى نينين الحكومي	نينين
مستشفى بنت جبيل الحكومي	بنت جبيل
مستشفى بعلمك الحكومي	بعلمك
مستشفى الرئيس الياض الهراوي الحكومي	زحلة

مختبرات المستشفيات العسكرية

Hôpital Militaire Central	المستشفى العسكري المركزي في بيروت	بيروت
---------------------------	-----------------------------------	-------

المختبرات المؤهلة لأخذ عينات "المسحات الأنفية" بطريقة Drive- thru

مختبر ميديكال دياغنوستيك تريتماننت سنتر (الحمراء) Medical Diagnostic Treatment Center (MDTC)	بيروت
مختبر ميد لاب MedLab SAL CIC ALS (الحمراء – الجبلين)	بيروت
مختبرات عيتاني Itani Medical Laboratories (المزرعة)	بيروت
مختبر أ ب سي ABC Laboratories	الأشرفية
مختبرات معوض الطبية Mouawad Medical Laboratory	النياح
مختبرات الشياح (د. فؤاد ربحان) Rihan Medical Center	النياح
مختبر إكسبرت لاب Expert Lab	النصيرية
مختبر لايف لاب Life LAB	بعلمك
مستشفى الرياق Riyak Hospital	رياق

المختبرات الخاصة المؤهلة لإجراء التشخيص المخبري لفيروس كورونا بطريقة الـ RT-PCR

المختبر	الموقع
AUBMC مستشفى الجامعة الأميركية	بيروت
Hotel-Dieu de France (HDF) مستشفى أوتيل ديو الجامعي	بيروت
مختبرات رودولف ميريو (الجامعة اليسوعية – المتحف) Laboratoire Rodolphe Mérieux (Université Saint-Joseph)	بيروت
Saint-George Hospital - UMC مستشفى القديس جارجيوس الجامعي	بيروت
Makassed General Hospital مستشفى المقاصد	بيروت
LAU Medical Center - Rizk Hospital مستشفى رزق الجامعي	بيروت
Hôpital Libanais Geitawi - CHU مستشفى اللبناني الجعيتاوي الجامعي	بيروت
Hôpital Notre-Dame du Rosaire مستشفى الوردية	بيروت
Doctor 's Center مختبر مركز الأطباء	بيروت
Fontana Laboratories (الحمرا) مختبر فونتانا	بيروت
مختبر الأمن العام (العناتية)	بيروت
Laboratoire Jabre-Ghorra مختبرات جبر وغرة	بيروت
Saint Marc Medical & Diagnostic Center مختبر السان مارك	بيروت
Laboratoire Moderne (Modern Lab- Berjaoui) المختبرات الحديثة	الغبيوي
Sahel General Hospital (SGH) مستشفى الساحل	الغبيوي
مستشفى الزهراء الجامعي	الغبيوي
Al Zahraa Hospital - UMC مستشفى الرسول الأعظم	برج الراجحة
مستشفى بهمن	
Al Rassoul Al Aazam Hospital Bahman Hospital	حارة حريك
مختبر ناتيونال دياغنوستك سرفيس كومباني National Diagnostic Services Company (NDSC)	حارة حريك
Medical Diagnostic Center مختبر الدكتور محمود عثمان - مركز التحاليل الطبية	لرابعة
American Diagnostic Center (ADC) مختبر أميريك دياغنوستك سنتر	الجناب
Mount Lebanon Hospital مستشفى جبل لبنان	بعنا
Hôpital Saint-George – Hadath مستشفى السان جورج الحدث	بعنا
Al Hadi Laboratory مختبر الهادي	بعنا
INOVIE-Liban مختبر	بعنا

Hôpital du Sacré- Coeur مستشفى قلب يسوع	الحازمية
Clinigene مختبر كلينيجان	الحازمية
Hôpital Dr.Samir Serhal مستشفى سرحال	المتن
Transmedical for Life مختبر ترانس ميدكال فور ليف	المتن
Haroun Hospital مستشفى هارون	الزلفا
Bellevue Medical Center (BMC) مستشفى بلفو	المنصورة
Hôpital Albert Haykal مستشفى هيكال	الكورة
Centre Hospitalier du Nord (CHN) مركز الشمال الإشتغاني	زغرتا
Mazloum Hospital مستشفى المظلوم	طرابلس
Al Mounla Hospital مستشفى الملا	طرابلس
Nini Hospital مستشفى النيني	طرابلس
مختبر ميكروبيولوجيا الصحة والبيئة LMSE - المعهد العالي للدكتوراه، الجامعة اللبنانية	طرابلس
CHU - Notre-Dame des Secours مستشفى سيدة المعونات الجامعي	جبل
Lab Akiki & Boulos مختبر عقيقي وبولس	جبل
Centre Médical Wakim مختبر واكيم	جونية
Ain Wazein Hospital مستشفى عين وزين	الشوف
Hammoud Hospital UMC مستشفى حمود الجامعي	سيدا
Al Karim Medical Laboratory (KML) مختبر الكريم	سيدا
Sheikh Ragheb Harb Hospital مستشفى الشيخ راجب حرب	البيتمنة
Sabbah Diagnostic Center (SDC) مختبر الصباح	البيطية
Jabal Amel Hospital مستشفى جبل عامل	صور
Mashrek Diagnostic Center (MDC) مختبر المشرق	صور
Dar Al Amal University Hospital مستشفى دار الأمل الجامعي	بعلبك
Khoury General Hospital مستشفى خوري	زحلة
Medical Care Center (MCC) مختبر ميدكال كير سنتر	زحلة