



## Lebanon National Operations Room Daily Report on COVID-19

Thursday, September 24, 2020

Report #190

Time Published: 10:00 PM

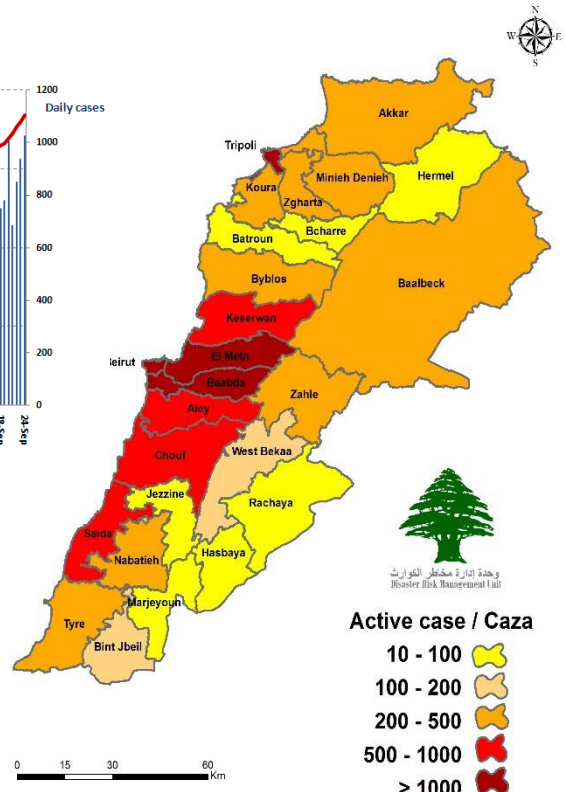
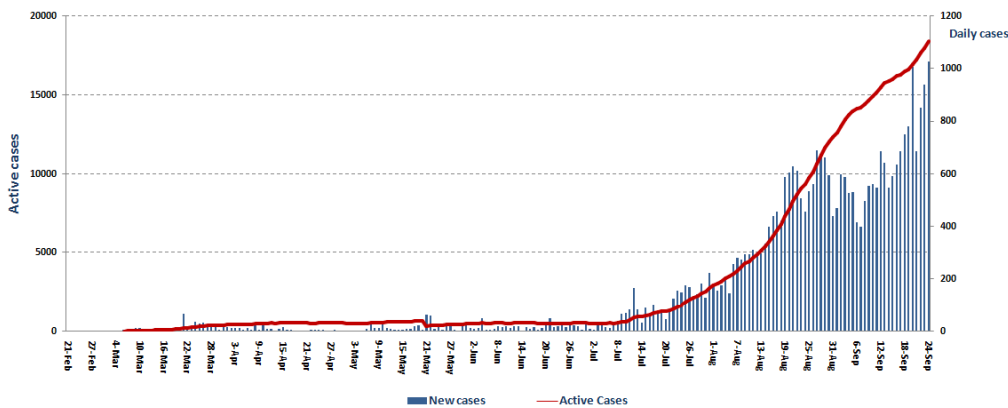
<b>1,027</b> New Cases		<b>32,805</b> Total Cases since 21.2.2020		<b>329</b> Total Deaths	<b>14,085</b> Total Recovered
923 Residents	17 Expats	31,190 Residents	1,615 Expats	<b>1</b> New Deaths	<b>558</b> New Recovered
<b>911</b> Total Cases in the Health Sector		<b>18,391</b> Total Active Cases		<b>492</b> Hospitalized Cases	
<b>19</b> New Cases in the Health Sector		<b>17,899</b> Cases in Home Isolation		<b>139</b> Total Cases in ICU	
<b>729,085</b> COVID-19 Tests since 21.2.2020		Lebanon Status compared to the World			
<b>829</b> COVID-19 Tests at Airport within 24 hrs.		<b>11,091</b> COVID-19 tests for residents within 24 hrs.		Total Cumulative	32,805
				Total Deaths	329
				Deaths percentage	1%
				Total recoveries	14,085
					31,209,051
					983,767
					3,05 %
					23,752,986

Ref: Ministry of Public Health Data

\*The Above data was last updated at 10:00 PM

### Number of Cases by Location

- 6,592 case is Under investigation



Active case / Caza  
 10 - 100  
 100 - 200  
 200 - 500  
 500 - 1000  
 > 1000

Beirut	Cases
Ein El Mraysseh	1
Hamra	12
Raouche	8
Mseitbeh	6
Mazraa	8
Qoreitem	6
Tariq Jdeedeh	15
Ras El Nabeh	6
Achrafieh	3
Mar Elias	3
Tallet El Khayyat	2
Basta Tahta	2
Zarif	3
Basta El Fawka	4
Borj Abi Haydar	4
Ras Beirut	4
Manara	8
Others	18
Baabda	Cases
Chiah	16
Jnah	6
Ouzai	5
Bir Hassan	3
Forn El Shubbak	2
Kfarshima	1
Ein El Rimmaneh	7
Haret Hreik	27
Laylaki	1
Borj El barajneh	15
Mreijeh	4
Hadat	21
Hazmieh	5
Baabda	10
Tahwetet El Ghadir	9
Madeneh El Riadih	1
Rayhaniyyeh	2
Ghobeiri	2
Bsaba	1
Jumhour	2
Louaizeh	1
Araya	1
Falougha	2
Others	1
Sour	Cases
Borj El Chemali	1
Maarakeh	1
Seddiqeen	1
Deir Kifa	2
Others	8
Baalbak	Cases
Kaa Baalbak	1
Doures	1
Nabe Raqsade	3
Hor Taala	1
Temnin El Tahta	2
Deir El Ahmar	1
Beit Chama	2
Taraya	1
Nabe Sheeth	1
Others	1

Matn	Cases
Borj Hammoud	26
Bouchrieh	5
Sin El Fil	8
Nabaa	2
Jal el Deeb	1
Jdeidet El Metn	2
Dawra	8
Dekwene	10
Naqqash	3
Antelias	4
Sed El Baouchrieh	1
Zalka	3
Dbayeh	2
Mansouriyeh	3
Rawda	1
Ein Najm	1
Bqannaya	1
Mkalles	1
Sabtieh	2
Roumieh	4
Bekfayya	4
Beit El Char	2
Mazrat Deir Awkar	1
Beit Merry	3
Fanar	10
Bsalim	7
Ein El Kharroubeh	1
Ein Saadeh	2
Deek el Mahdi	2
Mazraet Yashouh	3
Jouret El Ballout	1
Baabdat	1
Rabieh	1
Dahr El Souwan	1
Bolonia	2
Khenshara	1
Dhour Shweir	1
Ayroun	1
Others	3
Aleyh	Cases
EL Amrousiyyeh	1
Oumara	6
Bkheshtay	1
Ein El Jdeedeh	1
Hay El Sillom	11
Aramoun	23
Ainab	2
Bshamoun	5
Kfarmatta	2
Khaldeh	3
Kahale	2
Bhamdoun	2
Ein Dara	2
Majdlayya	1
Soufar	1
Mreijat	1
Others	2
Jezzine	Cases
Wadi Baanqouden	1
Kfarjarra	1

Zahleh	Cases
Bar Elias	10
El Rassieh	1
Saadnayel	9
Majdel Anjar	1
Hoch El Oumara	2
Forzol	2
Maallaqa	4
Saydet El Najat	1
Ablah	1
Jdita	1
Kab Elias	3
Taalbaya	2
Kfarzabad	1
Ein Kfarzabad	1
Niha	2
Ksara	1
Chtoura	3
Riyak	1
Ali Nahre	1
Deir El Ghazal	1
Terbol	1
Others	7
Keserwan	Cases
Sarba	2
Bouar	1
Kaslik	1
Haret Sakhr	3
Adonis	7
Sahel Alma	5
Safra	5
Zouk Mosbeh	9
Kfarhbab	1
Ghazir	2
Kleiaat	3
Ashkout	1
Tabarja	2
Adma Dafneh	2
Ballouneh	3
Daroun	1
Zouk Michael	2
Jeita	2
Faqra	1
Ghadir	5
Ajaltoun	1
Ghbaleh	1
Faytroun	1
Qyoun El Seman	1
Mayrouba	1
Ein El Delb	1
Beqaa El Gharby	Cases
Mashghara	2
Mansoura	7
Kamed El Loz	1
Ghazze	4
Tal Zanoub	1
Sohmor	1
Marj	1
Batroun	Cases
Shekka	6
Others	2

Chouf	Cases
Naameh	2
Anout	1
Barja	3
Dibbieh	1
Chehim	2
Ketermaya	2
Jiyyeh	4
Rmeile	2
Taameer	1
Mghayrieh	1
Bshetfeen	1
Zaarourieh	2
Deir Baba	1
Dmit	1
Baaqleen	2
Niha	1
Mrasta	1
Btalloun	1
Others	3
Rashayya	Cases
Kherbet Rouha	1
Others	1
Tripoli	Cases
Qebbeh	7
Mina	26
Zahrieh	3
Tabbaneh	2
Qalamoun	1
Beddawy	4
Zaytoun	1
Bab El Ramel	1
Tal	1
Tripoli	42
Madene Jadideh	1
Others	3
Koura	Cases
Beroumin	1
Kosba	1
Nakhleh	1
Deddeh	1
Ras Masqa	1
Touratej	1
Anfeh	1
Dahr El Ein	1
Others	1
Saida	Cases
Saida	7
Haret Saida	3
Ein el Helwe	2
Zaghdrayya	1
Miyeh W Miyeh	1
Abra	2
Bramieh	2
Qrayeh	1
Tanboureet	1
Ghazieh	3
Khrayeb	1
Others	14
Marjeyoun	Cases
Mays El Jabal	1

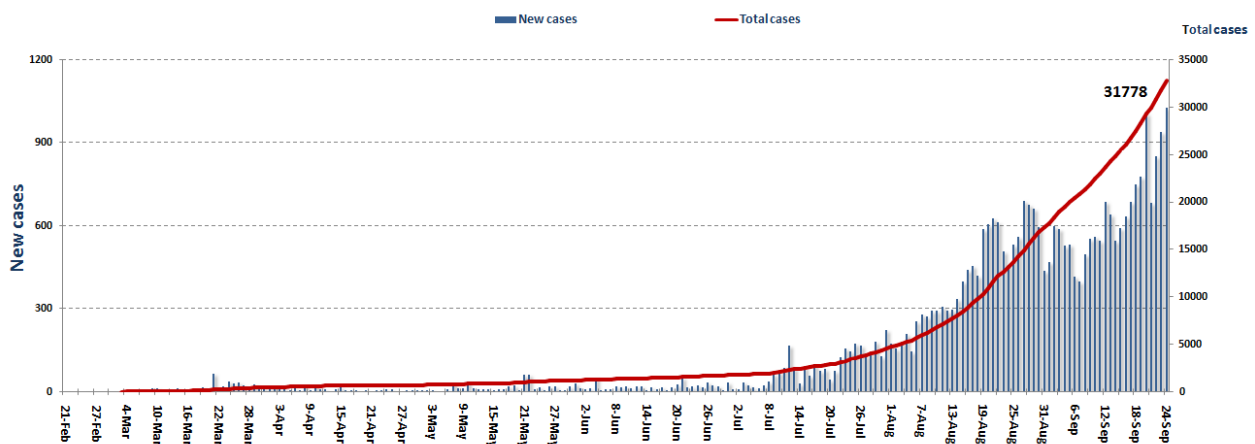
Jbeil	Cases
Jbeil	4
Blat	3
Amchit	6
Halat	4
Nahr Ibrahim	1
Hsoun	1
Mastita	3
Kfarzbouna	1
Eddeh	1
Jedayel	2
Fetre	3
El Boroj	1
Bejje	1
Others	9

Akkar	Cases
Bebnin	3
Sheikh Taba	3
Fneidek	1
Borj El Arab	1
Wadi Khaled	1
Tal Maayan	2
Sheikh Zinad	2
Berqayel	1
Meshmesh	1
Majdala	1
Ein Tinta	1
Talleel	4
Others	7

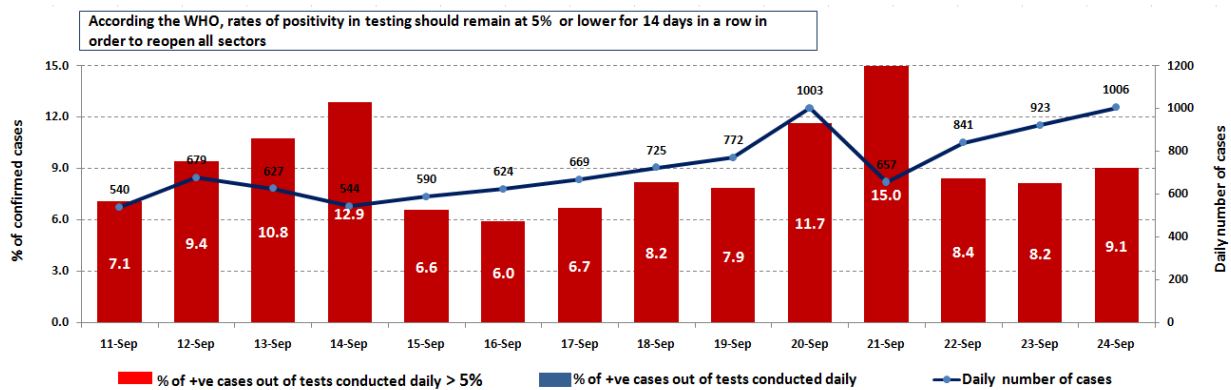
Bnt Jbeil	Cases
Haddata	1
Kafra	1
Debel	1
Others	1
Menyeh Duniyeh	Cases
Menyeh	3
Seer el Dunniyyeh	1
Deir Amar	1
Bhannin	1

Hasbaya	Cases
Memas	1
Nabatieh	Cases
Sarba	1
Deir El Zahrani	1
Nmayrieh	1
Ansar	2

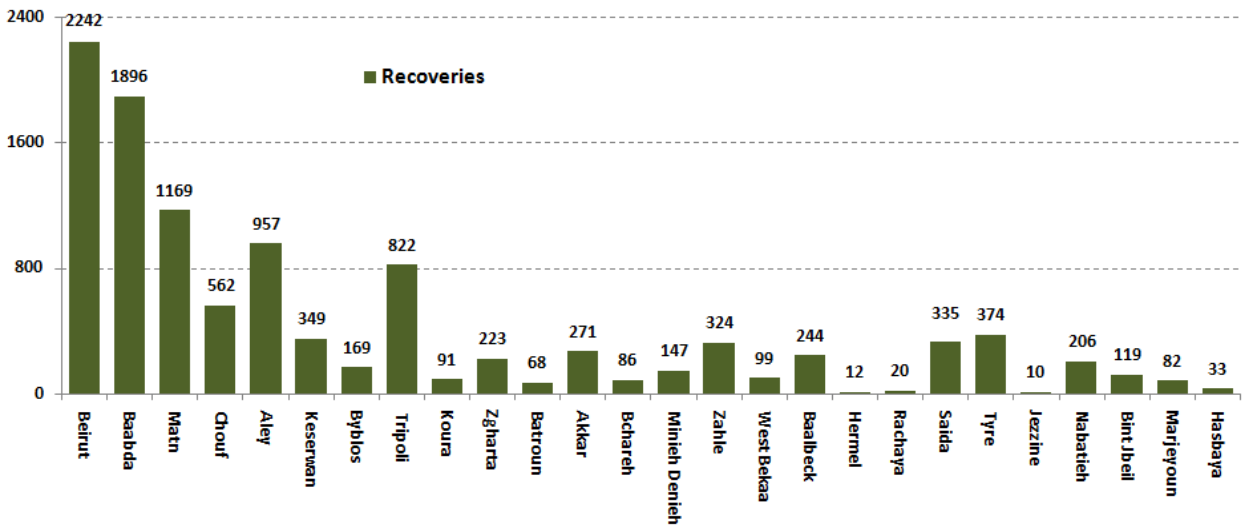
### Cases per day



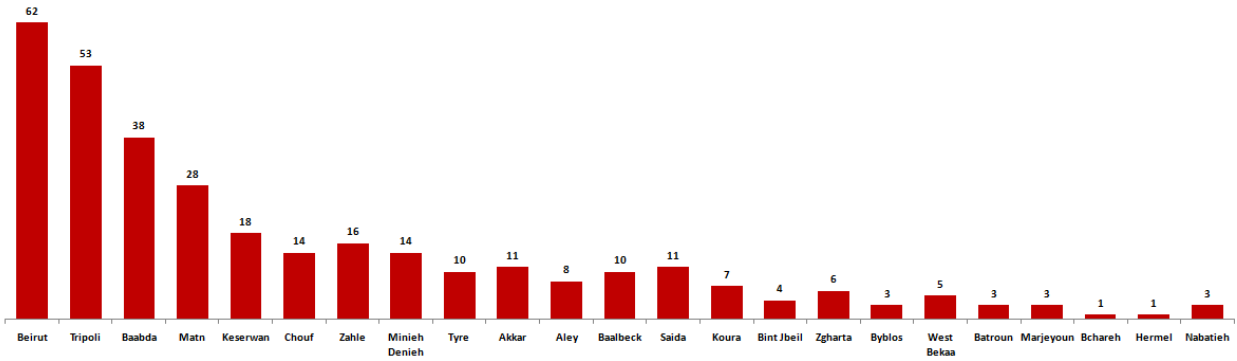
### The percentage of positive cases out of the number of daily checks (11 September to 24 September 2020)



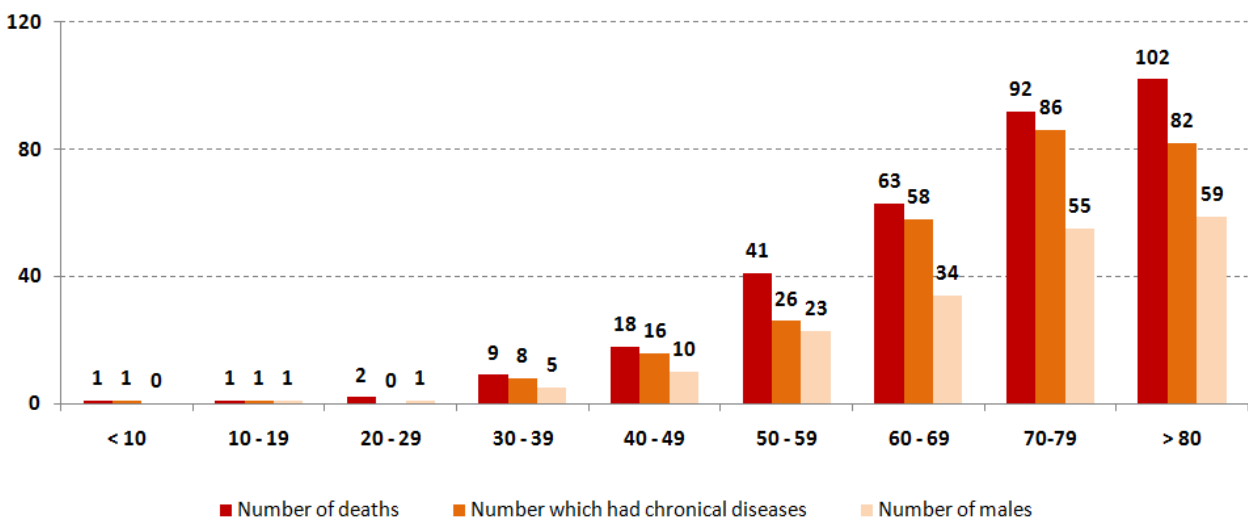
## Recoveries



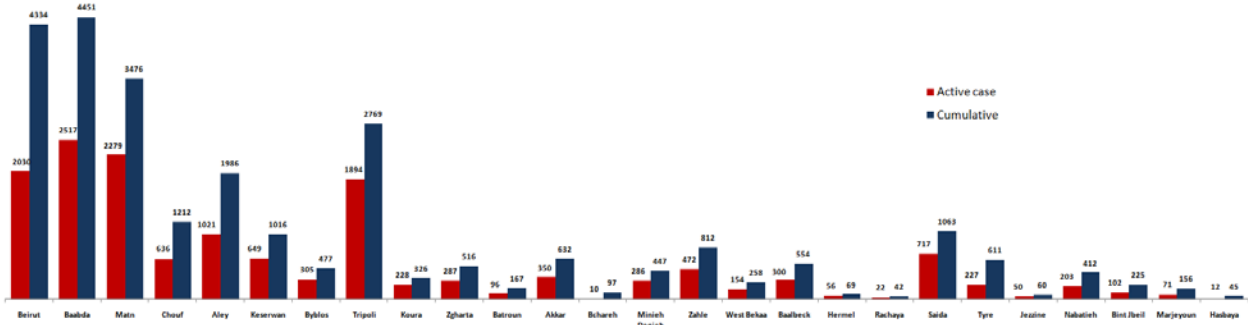
## Distribution of deaths by Governorates



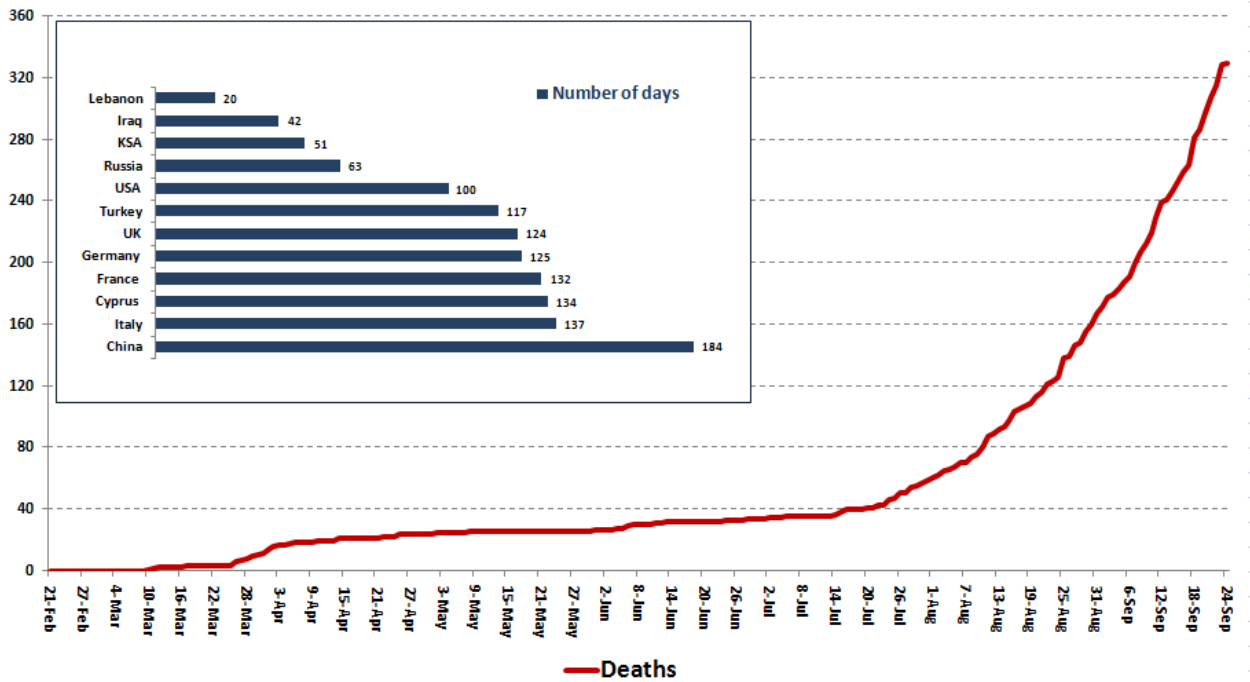
## Distribution of deaths by Age



## Distribution of Active Cases by Districts



## Comparison of the rate of doubling of the number of deaths in Lebanon with other countries (death doubling rate)

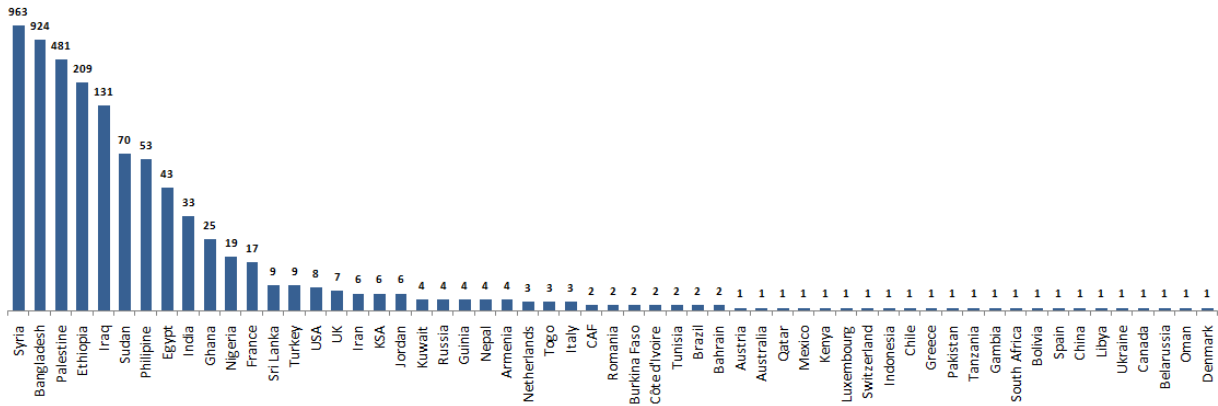


## The distribution of the recorded deaths during the past 24 hours

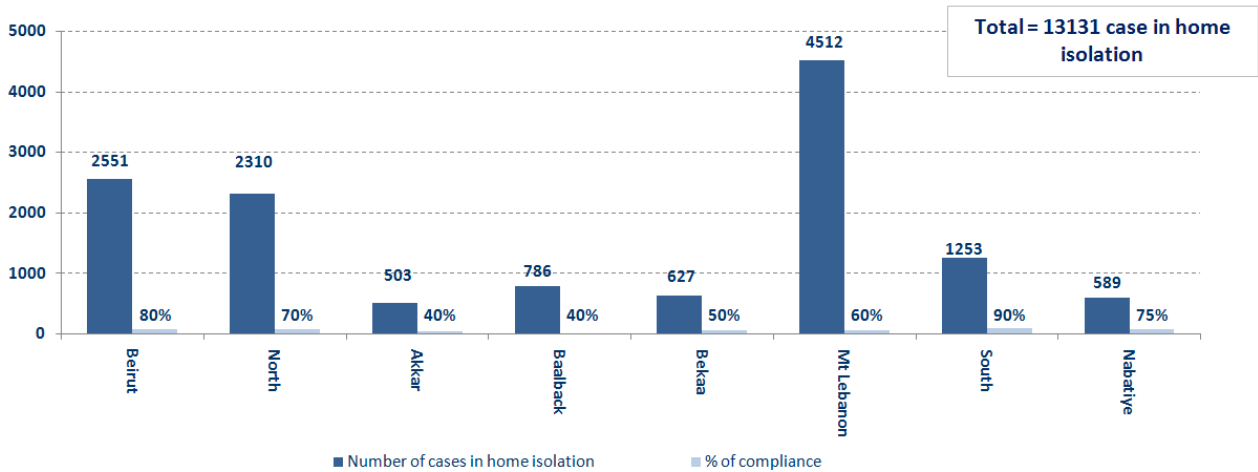
<b>Hospital</b>	<b>Residence</b>	<b>Gender</b>	<b>Age</b>	<b>Chronic</b>
AUBMC	Beirut	Male	77	Yes

## Distribution of cases by nationality

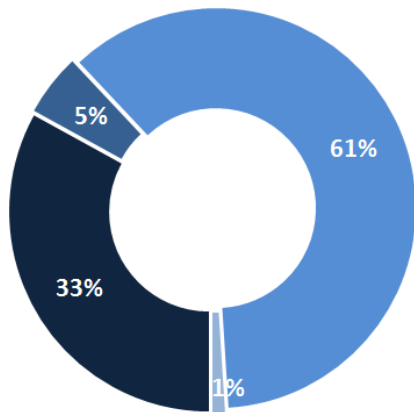
Lebanese : 27750 cases out of 30838 (88%)



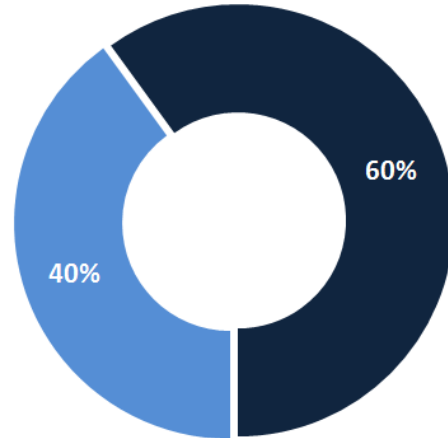
## Number of individuals in home isolation and percentage of commitment to isolation



## Exposure



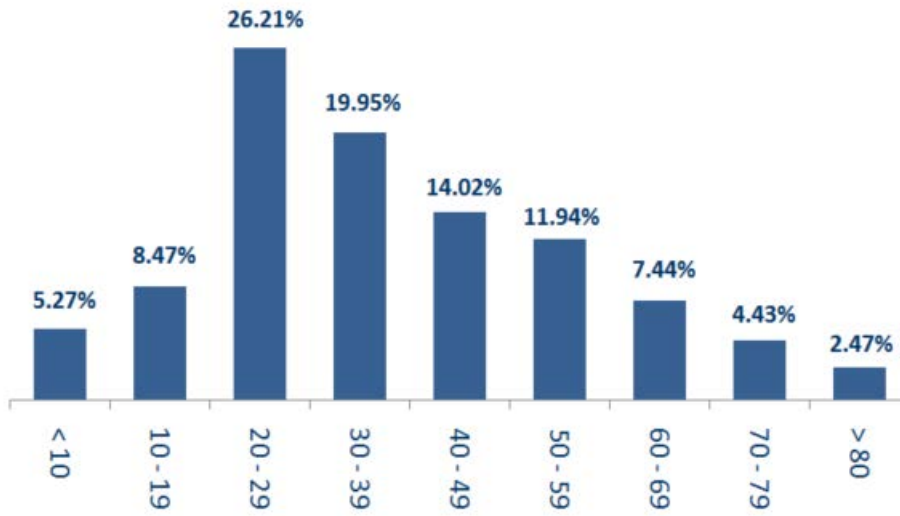
## Distribution according to gender



---

### Distribution by age

---



## The number of beds available for those infected with Coronavirus and the occupancy rate



For daily information on all the details of the bed distribution available for Covid-19 patients in the various governorates according to the hospitals

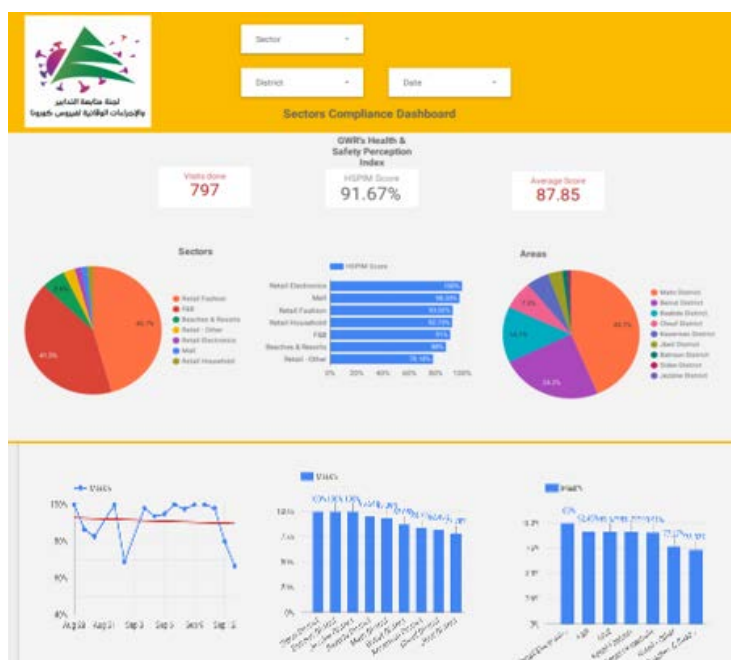
- Computer: <https://gisleb.cnrs.edu.lb/portal/apps/opsdashboard/index.html#/34b32db8030d4f229fc5db9ab686cca9>
- Mobile: <https://shorturl.at/cnqJ2>

## Online platform to track sector commitment in general mobilization procedures

Based on the recommendation issued by the National Committee for Follow-up of Preventive Measures and Measures to Confront the Coronavirus to open all sectors, provided that the general mobilization procedure (safe distance, muzzle, and hand sterilization) be applied, a special electronic platform was created that allows monitoring and measuring the percentage of commitment by various sectors on an ongoing basis.

The detailed results can be viewed directly at the following link:

<http://bit.ly/covidsectordata>





---

**Decisions and actions taken – 24/09/2020**

---



---

**Ministry of Public Health**

---

- The Ministry of Public Health evaluated the procedures that were followed at the airport during the last three months with the General Directorate of Civil Aviation at the Ministry of Public Works and Transport and the Middle East Airlines, as more than 300,000 arrivals to Lebanon were received, and gaps and proposals were identified to fill them by working on Securing additional teams of volunteers to assist employees and researching the adoption of a new mechanism for checks at the airport to determine the possibility of arriving arrivals with the virus.

Medical teams in the Ministry of Public Health are following up campaigns to conduct tests for contacts in various Lebanese regions, in cooperation with the municipalities and relevant agencies, in order to determine the epidemiological reality and take appropriate decisions and measures.

The Ministry of Public Health issued the updated list of laboratories accredited by the Lebanese Ministry of Public Health to conduct PCR tests for Coronavirus (a copy of the laboratory names is attached at the end of the report).

---

**Lebanese Red Cross**

---

233,049 (609 New)	Number of PCR tests transferred to laboratories	45,440 (51 New)	Number of additional ambulance centers ready to respond	48	ambulance centers	5,227 (79 New)	cases transferred to hospitals
166	Number of volunteers trained to transfer PCR tests	1,498	Number of trained paramedics	8,658 (57 New)	total number of respondents	77,814 (546 New)	number of those benefiting from awareness *sessions
967	The number of university volunteers trained to follow up on prevention measures in companies and institutions	291	Number of university volunteers trained to conduct awareness sessions	550	total LRC volunteers for covid19	8,497 (57 New)	number of trained managers for isolation centers
4,213 (1 New)	Number of beneficiaries from educational electronic platforms COVID-19	91,471 (1424 New)	Number of distributed equipment	1,236,031	total distributed posters, brochures, and flyers on covid19 prevention	542 (6 New)	number of prisons that have been disinfected

## General Directorate of State Security

- Investigating and following up on suspected and positive cases and cases in home quarantine for residents and expatriates.
- Sending warnings and closing a number of violating commercial stores in the various regions.

Beirut	South	North	Akkar	Beqaa	Nabateih	Baalbek Hermel	Mount Leb
22%	51%	56%	50%	N/A	58%	10%	28%

## General Directorate of Internal Security Forces

- Internal Security Forces circulated the preventive measures that must be followed when traveling by cars and using shared transportation and public cars.
- Writing arrest records against violators of the general closure decision

The number of seizure records during the past 24 hours					The total number of records that have been organized against violators of the general mobilization decisions since 03/08/2020		
Written records of violating institutions (absorptive capacity and preventive measures)					0		
Written records of persons violating the decision to wear a mask					0	Beirut	20,642
Written records of people violating the general mobilization decision (Aragil* and social distancing)					30	Mount Leb	18,813
<b>Total</b>					<b>30</b>	Beqaa	8,047
						North	6,784
Beirut	Mount Leb	Beqaa	North	South		South	6,833
0	0	0	0	30	<b>Total</b>		<b>61,119</b>

## Ministry of Public Works and Transportation

Departing Flights		Arriving Flights	
Number of Flights	33	Number of Flights	32
Number of Departing Individuals	3,145	Number of Arrivals	2,485

Port	Entered			Left		
	Import	Direction	#	Export	Direction	#
<b>Beirut</b>	Construction Material	Alexandarun	1			
<b>Tripoli</b>	Wheat	Ukraine	1			
<b>Jeyyeh</b>	Pazalane	Foulous	1	Blank	Limasoul	1
			<b>3</b>			<b>1</b>

---

## General announcements

---

In light of the increase in the percentage of positive cases in the examinations to more than 8%, which poses an imminent threat to public health and causes the spread of the epidemic in the educational sector, the Follow-up Committee on Preventive Measures and Procedures to Confront the Coronavirus in its meeting held today on 9/24/2020 recommended a postponement. The date of attendance education for students is for a period of 14 days, with the exception of official examinations in all its stages, provided that the departments raise the degree of commitment to the preventive measures and develop a plan to identify the towns that have a high case rate and an escalating positive case rate, in order to take the necessary measures.

The Ministry of Foreign Affairs and Expatriates issued a circular to all Lebanese missions abroad on September 21, 2020, which includes the general conditions for coming to Lebanon, based on the recommendations of the Committee for Follow-up of Preventive Measures and Measures to Confront the Coronavirus. The Ministry also circulated to foreign embassies in Lebanon and Lebanese missions abroad the circular issued by the General Directorate of Civil Aviation at the Ministry of Public Works and Transport about procedures related to all arrivals to Lebanon, starting from September 23, 2020. The Ministry also follows up with the embassies the situation of the Lebanese in facing the virus abroad, in addition to coordinating with foreign embassies regarding the aid that comes to Lebanon to face the crisis.

The General Directorate of Civil Aviation at the Ministry of Public Works and Transport issued Circular No. 53/2 on September 22, 2020, supplementing Circular No. 52/2 according to which the Radisson Blue Verdun Hotel was added to the list of hotels approved by the Ministry of Public Health in Lebanon.

The General Directorate of Civil Aviation at the Ministry of Public Works and Transport issued Circular No. 52/2 on September 21, 2020 to all airlines and ground services companies operating at Rafic Hariri International Airport regarding procedures related to passengers arriving in Lebanon starting from September 23, 2020.

Implementing the Ministry of Interior and Municipalities Decision No. 1129 of 9/17/2020 regarding amending the opening and closing times of industrial and commercial establishments, which kept work at the time of preventing exit and entering the streets between the first hour of midnight until six in the morning of every day, and approved the recommendations issued by the meeting of the Committee for Follow-up of Preventive Measures and Measures to Confront the Coronavirus on 9/16/2020.

**Note: The decisions can be found at [www.drm.pcm.gov.lb](http://www.drm.pcm.gov.lb)**

---

## Examples of lack of adherence to safety measures

---

- Demand gatherings and demonstrations.
- Failure to comply with the preventive measures and procedures required in a number of stores and markets (putting on a muzzle or face mask, sterilizing hands, maintaining a safe distance).
- Non-compliance with the 50% occupancy rate in several restaurants and amusement game centers.
- Gatherings for social events.
- Failure of those in contact with confirmed cases to adhere to home isolation procedures until the results of the laboratory tests are issued.

**If you feel any symptoms, call directly the hotline of the Ministry of Public Health: 1214 or 01/594459**

## A list of the laboratories accredited by the MoPH to conduct PCR tests

### المختبرات الحكومية المؤهلة إجراء التشخيص المخبري لفيروس كورونا بطريقة الـ RT-PCR

المختبر	الموقع
مستشفى رفيق الحريري الجامعي RHUH	بيروت
مستشفى حيا الحكومي	حيا
مستشفى طرابلس الحكومي	طرابلس
مستشفى البترون الحكومي	البترون
مستشفى فتوح كسروان الحكومي (البوار)	كسروان
مستشفى نبيه بري الحكومي الجامعي	النبطية
مستشفى تينين الحكومي	تينين
مستشفى بنت جبيل الحكومي	بنت جبيل
مستشفى بعليك الحكومي	بعليك
مستشفى الرئيس الياس الهراوي الحكومي	زحلة

### المختبرات الخاصة المؤهلة إجراء التشخيص المخبري لفيروس كورونا بطريقة الـ RT-PCR

المختبر	الموقع
مستشفى الجامعة الأمريكية AUBMC	بيروت
مستشفى أوتيل ديو الجامعي (HDF) Hotel-Dieu de France	بيروت
مختبرات رودولف ميرييو (الجامعة اليسوعية - المتحف) Laboratoire Rodolphe Mérieux (Université Saint-Joseph)	بيروت
مستشفى القديس جاورجيوس الجامعي Saint-George Hospital - UMC	بيروت
مستشفى المقاصد Makassed General Hospital	بيروت
مستشفى رزق الجامعي LAU Medical Center - Rizk Hospital	بيروت
مستشفى اللبناني الجعيتاوي الجامعي Hôpital Libanais Geitawi - CHU	بيروت
مستشفى الوردية Hôpital Notre-Dame du Rosaire	بيروت
مختبر مركز الأطباء Doctor 's Center	بيروت
مختبر فونتانا (الحمرا) Fontana Laboratories	بيروت
مختبر الأمن العام (العدلية)	بيروت
مختبرات جبر وقرّة Laboratoire Jabre-Ghorra	بيروت
مختبر السان مارك Saint Marc Medical & Diagnostic Center	بيروت
المختبرات الحديثة Laboratoire Moderne (Modern Lab- Berjaoui)	لغبري
مستشفى الساحل Sahel General Hospital (SGH)	لغبري
مستشفى الزهراء الجامعي	لغبري
مستشفى الرسول الأعظم Al Zahraa Hospital - UMC	برج الراجنة
مستشفى بهمن	
Al Rassoul Al Aazam Hospital Bahman Hospital	حارة حريك
مختبر ناتيونال دياغنوستك سرفيس كومباني National Diagnostic Services Company (NDSC)	حارة حريك
مختبر الدكتور محمود عثمان - مركز التحاليل الطبية Medical Diagnostic Center	لحريجة
مختبر أميركن دياغنوستك سنتر American Diagnostic Center (ADC)	الجناح
مستشفى جبل لبنان Mount Lebanon Hospital	بعنا
مستشفى السان جورج الحدث Hôpital Saint-George – Hadath	بعنا
مختبر الهادي Al Hadi Laboratory	بعنا
مختبر INOVIE-Liban	بعنا

Hôpital du Sacré- Coeur	مستشفى قلب يسوع	الحازمية
Clinigene	مختبر كلينيجان	الحازمية
Hôpital Dr.Samir Serhal	مستشفى سرحال	المن
Transmedical for Life	مختبر ترانسميديكال فور ليف	المن
Haroun Hospital	مستشفى هارون	الزلفا
Bellevue Medical Center (BMC)	مستشفى بلغو	المنصورة
Hôpital Albert Haykal	مستشفى هيكال	الكورة
Centre Hospitalier du Nord (CHN)	مركز الشمال الإستشفائي	زغرتا
Mazloum Hospital	مستشفى المظلوم	طرابلس
Al Mounla Hospital	مستشفى المنلا	طرابلس
Nini Hospital	مستشفى النبي	طرابلس
LMSE - المعهد العالي للدكتوراه، الجامعة اللبنانية	مختبر ميكروبيولوجيا الصحة والبيئة	طرابلس
CHU - Notre-Dame des Secours	مستشفى سيدة المعونات الجامعي	جبل
Lab Akiki & Boulos	مختبر عقريقي وبولس	جبل
Centre Médical Wakim	مختبر واكيم	جونية
Ain Wazein Hospital	مستشفى عين وزين	الشوف
Hammoud Hospital UMC	مستشفى حمود الجامعي	صيدا
Al Karim Medical Laboratory (KML)	مختبر الكريم	صيدا
Sheikh Ragheb Harb Hospital	مستشفى الشيخ راجب حرب	البيشة
Sabbah Diagnostic Center (SDC)	مختبر السباح	البيشة
Jabal Amel Hospital	مستشفى جبل عامل	صور
Mashrek Diagnostic Center (MDC)	مختبر المشرق	صور
Dar Al Amal University Hospital	مستشفى دار الأمل الجامعي	بعلبك
Khoury General Hospital	مستشفى خوري	زحلة
Medical Care Center (MCC)	مختبر ميديكال كير سنتر	زحلة

#### مختبرات المستشفيات العسكرية

Hôpital Militaire Central	المستشفى العسكري المركزي في بيروت	بيروت
---------------------------	-----------------------------------	-------

#### المختبرات المؤهلة لأخذ عينات "المسحات الأنفية" بطريقة Drive- thru

Medical Diagnostic Treatment Center (MDTC)	مختبر ميديكال دياغنونمنتيك تريتمانت سنتر (الحمراء)	بيروت
MedLab SAL CIC ALS	مختبر ميد لاب (الحمراء - الجفجفون)	بيروت
Itani Medical Laboratories	مختبرات عيتاني (المزرعة)	بيروت
ABC Laboratories	مختبر أ ب سي	الأشرفية
Mouawad Medical Laboratory	مختبرات معوض الطبية	التياح
Rihan Medical Center	مختبرات الشياح (د. فؤاد ريحان)	التياح
Expert Lab	مختبر إكسبرت لاب	المنصورة
Life LAB	مختبر لايف لاب	بعلبك
Riyak Hospital	مستشفى الرياق	رياق