



Lebanon National Operations Room Daily Report on COVID-19

Saturday, October 24, 2020

Report #220

Time Published: 10:30 PM

New in the report:

- An amendment to the names of laboratories that do not adhere to the procedures followed in recording the required information about the injured (place of residence, phone number), which increases the total number of cases under investigation during the past 24 hours.

1,427 New Cases		69,906 Total Cases since 21.2.2020		562 Total Deaths		33,538 Total Recovered	
1,404 Residents	23 Expats	66,373 Residents	2,129 Expats	7 New Deaths		1,126 New Recovered	

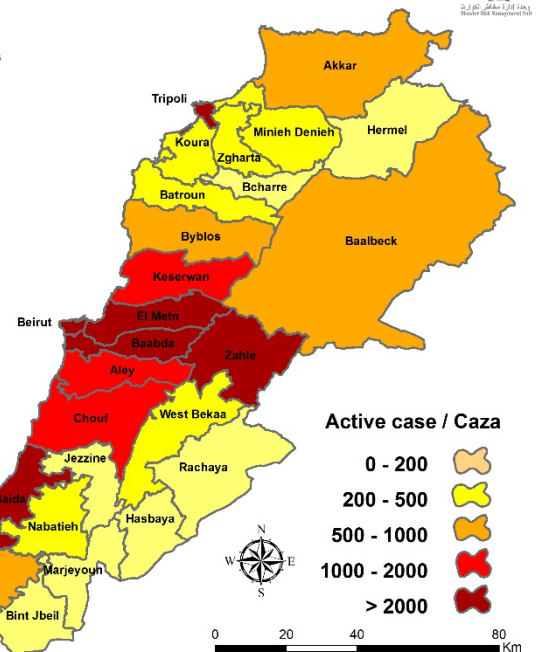
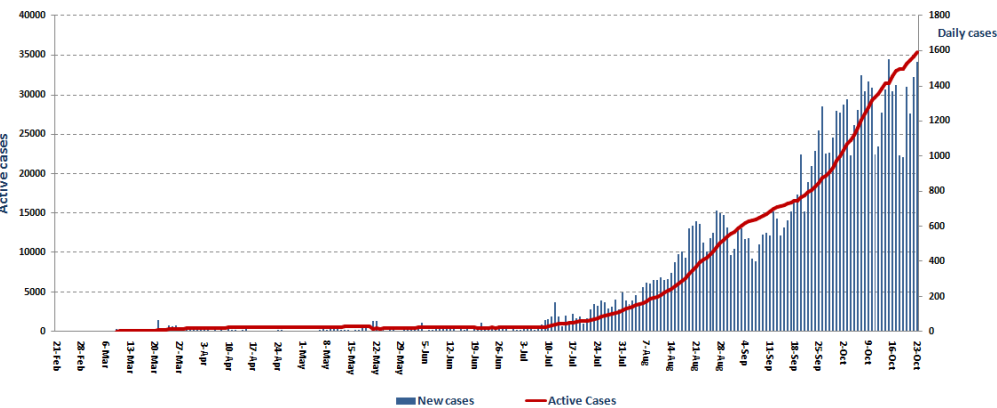
81 Deleted Status due to its recurrence	1,335 Total Cases in the Health Sector	33,806 Total Active Cases	689 Hospitalized Cases	244 Total Cases in ICU
	7 New Cases in the Health Sector	33,117 Cases in Home Isolation	445 Mild Cases	2 New Cases in ICU

1,086,482 COVID-19 Tests since 21.2.2020	Lebanon Status compared to the World			
		Total Cumulative	69,906	42,757,223
767 COVID-19 Tests at Airport within 24 hrs.	12,756 COVID-19 tests for residents within 24 hrs.	Total Deaths	562	1,152,550
		Deaths percentage	0,8%	2.69%
		Total recoveries	33,538	31,568,790

Ref: Ministry of Public Health Data

Number of Cases by Location

- 12,370 case is Under investigation



Beirut	160
Ein AL Mreisseh	2
AUB	1
Ras Beirut	2
Manara	2
Qoreitem	1
Raouche	4
Hamra	9
Mseitbeh	5
Mar Elias	8
Tallet Al Khayyat	2
Tallet El Drouz	1
Sanayeh	2
Zarif	1
Mina El Hosn	2
Mazraa	6
Borj Abi Haidar	8
Basta Fawka	1
Tariq Al Jdeedeh	8
Horoch	1
Ras Al Nabaa	14
Michael AL Nahr	1
Ashrafieh	12
Others	67
Baabda	205
Chiah	18
Jnah	4
Ouzai	7
Bir Hassan	4
Cite Sportif	1
Ghobeiry	4
Ein Al Rimmaneh	10
For El Shebbak	2
Haret Hreik	38
Lailaky	10
Bor Al Brajneh	20
Mreijeh	7
Tahweetet Ghadir	4
Baabda	6
Hazmieh	7
Yarze	1
Hadat	33
Botchay	1
Kfarshima	6
Rweiset El Ballout	2
Ras Al Metn	2
Salima	1
Hasbayya	1
Others	16
Koura	9
Betroumine	1
Kfarqahel	1
Dahr El Ein	4
Bkaftine	1
Nakhleh	2

Chouf	32
Naameh	2
Haret El Naameh	2
Mazboud	1
Dalhoun	1
Darayya	2
Ketermaya	1
Barja	3
Jiyyeh	3
Rmeileh	1
Zaarourieh	4
Deir Al Qamar	1
Deir Baba	1
Breeh	1
Baqaata	1
Niha	2
Others	6
Aley	65
al Amrousieh	2
Hay El Sillom	8
Khaldeh	1
Al Oumara	5
Deir Qoubel	2
Aramoun	13
Bshamoun	8
Bleibel	1
Bdadoun	1
Aley	9
Ein EL Jdeedeh	2
Baysour	1
Abayh	1
Bhamdoun	3
Soufar	2
Btater	1
Others	5
Tripoli	62
Zaytoun	3
Haddadine	3
Qebbeh	3
Zahrieh	3
Mina 1	7
Bsatine AL Mina	4
Qalamoun	2
Beddawy	1
Beddawy Camp	1
Others	35
Zghorta	17
Zghorta	3
Kfarhata	1
Majdlayya	2
Haret Al Jdeedeh	1
Almat	2
Bsab'el	1
Ehden	2
Meryata	2
Others	3

Kesrwen	91
Sarba	6
Zouk Michael	5
Ghadir	3
Zouk Mosbeh	7
Adonis	3
Haret Sakher	3
Sahel Alma	10
Kfaryassine	1
Tabarja	1
Adma & Dafneh	2
Safra	2
Bouar	2
Oqeibeh	1
Ajaltoun	3
Ballouneh	9
Sehaily	1
Ein Al Rihaneh	1
Jeita	2
Ghazir	3
Kfarhbab	1
Harissa	1
Dar'oun	2
Al ftahat	1
Mradieh	2
Qlei'aat	2
Ashkout	2
Feitroun	1
Raasheen	1
Kfardebian	1
Bqaatouta	1
Hrajel	1
Others	10
Byblos	37
Byblos	7
Mastita	5
Blat	3
Amshit	2
Halat	2
Dfidar	1
Nahr Ibrahim	2
Almat	1
Shekhnaya	1
Abnnaya	1
Hsoun	3
Adonis	2
Hboub	3
Shikhan	1
Tartej	1
Others	2
Western Beqaa	6
Meidoun	1
Lala	1
Kamed El Loz	1
Others	3

Matn	215
Borj Hammoud	13
Sin EL Fil	5
Jesr El Basha	1
Jdeidet El Metn	15
Bouchrieh	5
Dora	3
Rawda	3
Sed El Bouchrieh	10
Sabtieh	5
Dekwaneh	13
Mkalles	1
Antelias	8
Jal El Dib	14
Naqqash	3
Zalqa	10
Byaqout	7
Bellview	2
Dbayyeh	7
Deir Aoukar	3
Mansourieh	12
Fanar	9
Ein Saadeh	1
Bqannaya	1
Bsalim	11
Nabayh	2
Mteilwb	1
Qornet Chehwan	1
Rabweh	2
Beit El Chaar	4
Deek El Mahdy	2
Mazraet Yashouh	4
Zikrit	4
Bekfayya	2
Beit Shabab	2
Safeeleh	1
Broummana	1
Qannabet	1
Baabdat	2
Beit Mery	2
Monteverde	2
Mtein	1
Bolonia	1
Qaaqour	1
Aintoura	1
Btegrine	1
Douar	1
Ayroun	1
Majdel Tarsheesh	1
Baskinta	1
Others	11
Menyh Dunnyeh	19
Menyeh	17
Others	2
Bcharre	1
Al Saydeh	1

Akkar	30
Halba	1
Sheikh Mohammad	2
Menyara	1
Zouk Al Habalsa	1
Mar Touma	1
Old Akkar	2
Western Tal Abbas	1
Koueikhat	1
Tal Beereh	1
Qlei'aat	2
Kneiseh	1
Nahr Al Bared	1
Abdeh	1
Beqayel	1
Houeish	1
Beit Ayyoun	1
Meshmesh	1
Fneidek	2
Tasheh	1
Rahbe	1
Mashta Hammoud	1
Andkit	1
Wady Khaled	1
Akroun	1
Others	2
Hermel	1
Dora	1
Rashayya	2
Beereh	1
Others	1
Marjeyoun	3
Ebl EL Saqy	1
Others	2
Hasbaya	3
Hasbaya	2
Others	1

Zahleh	42
Rassieh	1
Maallaqa	2
Hoch Al Oumara	2
Mar Elias	6
Forzol	1
Qaa El Rim	1
Ksara	1
Wady Al Arayesh	1
Chtoura	1
Taalabaya	3
Jdita	1
Majdel Anjar	1
Riyak	4
Deir Al Ghazal	1
Terbol	3
Ein Kfarzabad	1
Kfarzaba	2
Others	10
Batroun	18
Batroun	6
Shekka	3
Jran Al Matroun	1
Kfarhetna	1
Besbina	2
Ras Nhash	3
Awra	1
Shatine	1
Jezzine	1
Aishieh	1
Bint Jbeil	7
Ainata	1
Rmeish	2
Jmeijmeh	1
Rshaf	1
Beit Leef	1
Others	1

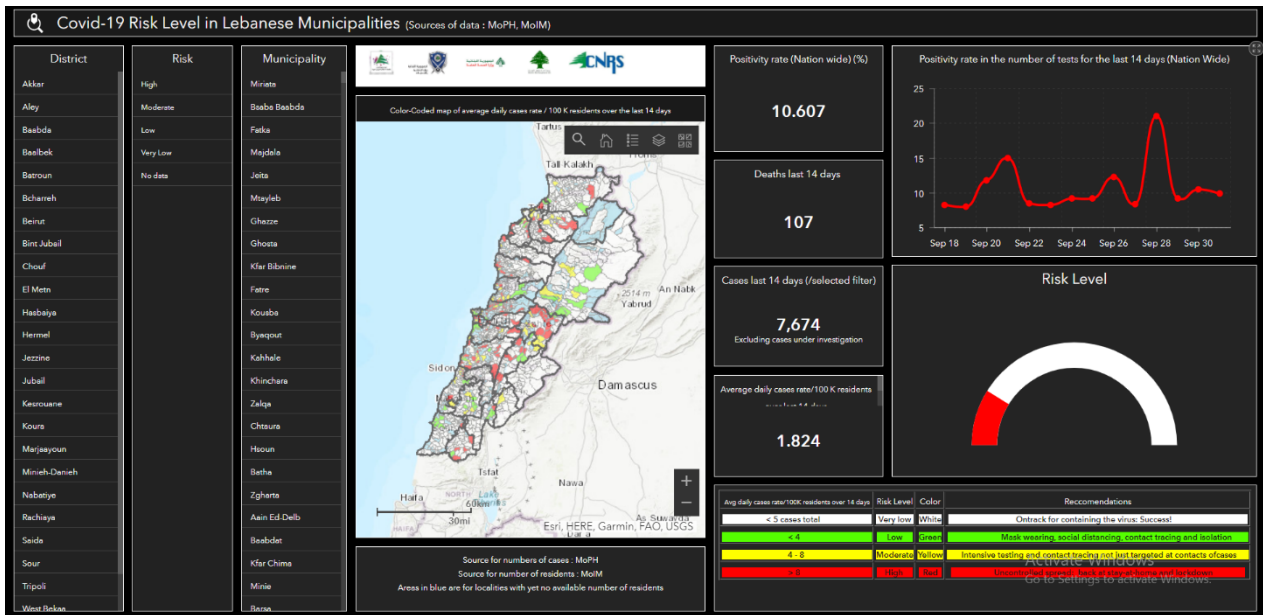
Saida	72
Hlalieh	1
Haret Saida	4
Miyeh W Miyeh	1
Ein El Helwe	11
Ashrafieh	1
Abra	8
Ghazieh	4
Khrayeb	1
Sarafand	2
Qaqa'iet Snoubar	1
Bisarieh	2
Tefahta	2
Saksakieh	1
Anqoun	1
Others	32
Baalbek	69
Baalbek	8
Ras El Ein	1
Doures	3
Nahle	2
Fekha	1
Arsal	5
Labweh	1
Qasr Nabba	3
Hoch El Rafqa	1
Temnine Tahta	1
Shmestar	1
Ser'een El Tahta	16
Ser'een El Fawka	2
Naby Sheeth	2
Others	22

Others	181
---------------	------------

Tyre	43
Maashouq	1
Borj Al Shemaly	1
Qanoun Al Ein	1
Mjadel	2
Baflied	1
Qana	4
Maarakeh	2
Saddiqeen	3
Ein B'aal	4
Bazourieh	1
Hannaway	1
Chehabieh	1
Rmadieh	1
Qanoun Al Nahr	1
Shhour	1
Sreefa	1
Abbasieh	2
Borj Rahhal	1
Shiheen	2
Others	12
Nabatieh	36
Nabatieh Tahta	6
Mazraet Kfar Joz	1
Zebdine	2
Jbaa	3
Roumine	1
Deir El Zahrany	2
Nmeirieh	1
Harouf	3
Jebshit	1
Meifadoun	1
Ansar	3
Qseibeh	1
Qaaqa'iet El Jesr	1
Kfar Seer	1
Yuhmor	1
Wester Seer	1
Others	7

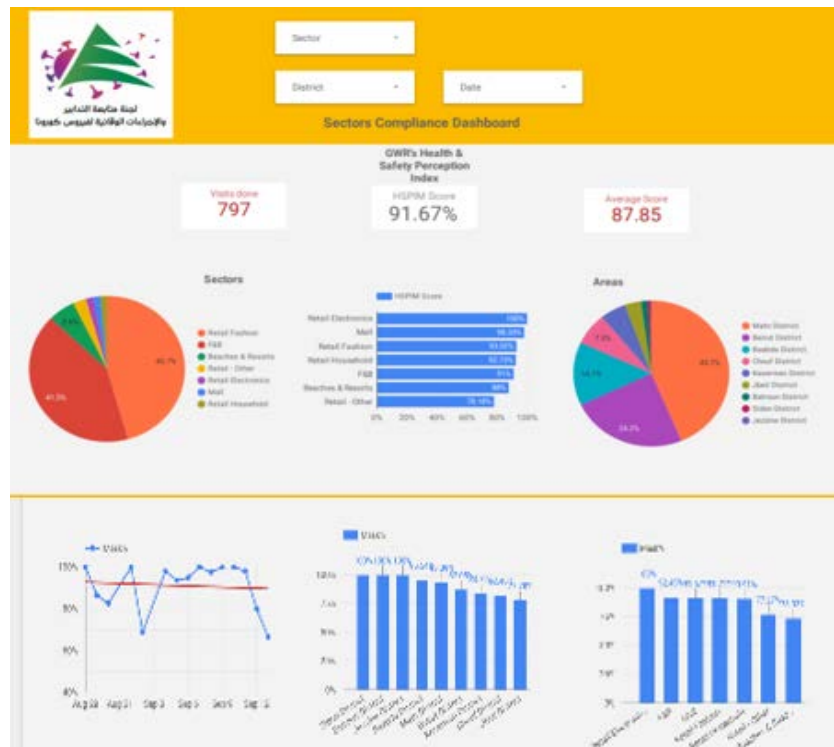
*181 Cases under verification due to the failure of a number of laboratories to provide the Ministry of Public Health with information about housing or the phone number of infected cases.

The Online platform to measure the level of risk of the spread of the new Corona virus



This interactive platform allows you to know the level of risk of spreading the kurna virus according to districts, based on the number of cases registered daily and the number of residents in each district. For more information on a daily basis, you can access the following link: <https://bit.ly/DRM-RiskLevelInMunicipalities>

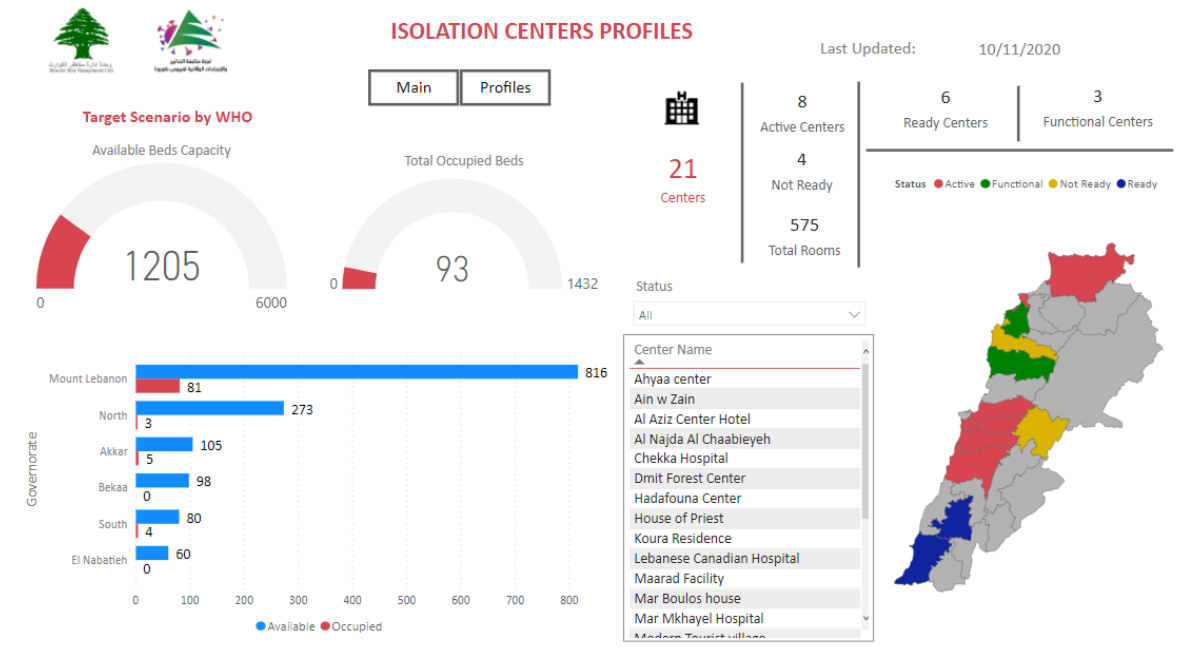
Online platform to track sector commitment in general mobilization procedures



Based on the recommendation issued by the National Committee for Follow-up of Preventive Measures and Measures to Confront the Coronavirus to open all sectors, provided that the general mobilization procedure (safe distance, muzzle, and hand sterilization) be applied, a special electronic platform was created that allows monitoring and measuring the percentage of commitment by various sectors on an ongoing basis.

The detailed results can be viewed directly at the following link: <http://bit.ly/covidsectordata>

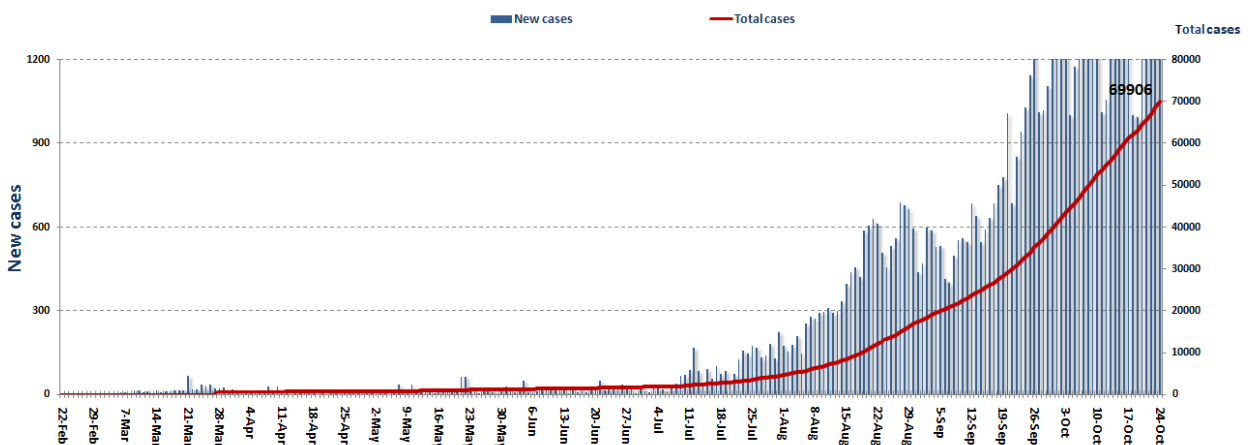
Occupancy rate of isolation centers for cases infected with Coronavirus



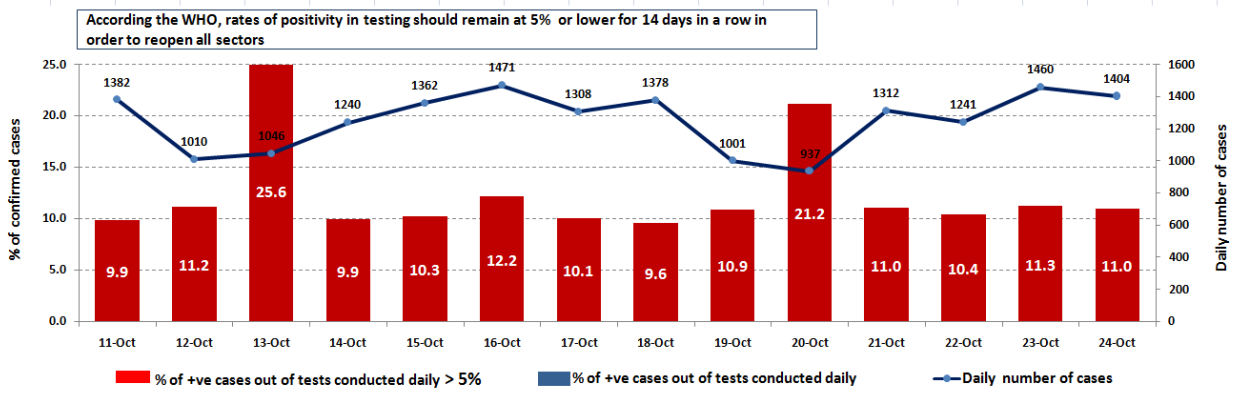
For more information about the isolation centers' distribution and the percentage of their occupancy, enter the following link: <http://bit.ly/DRM-IsolationCentersProfiles>

Note: These centers have been equipped in cooperation between the National Committee for Follow-up of Preventive Measures and Measures to Confront the Coronavirus and Governors and Municipalities, the United Nations Development Program, the World Health Organization, UNICEF, the Ministry of Public Health, the Syndicate of Nurses in Lebanon and the Syndicate of Specialists in Social Work.

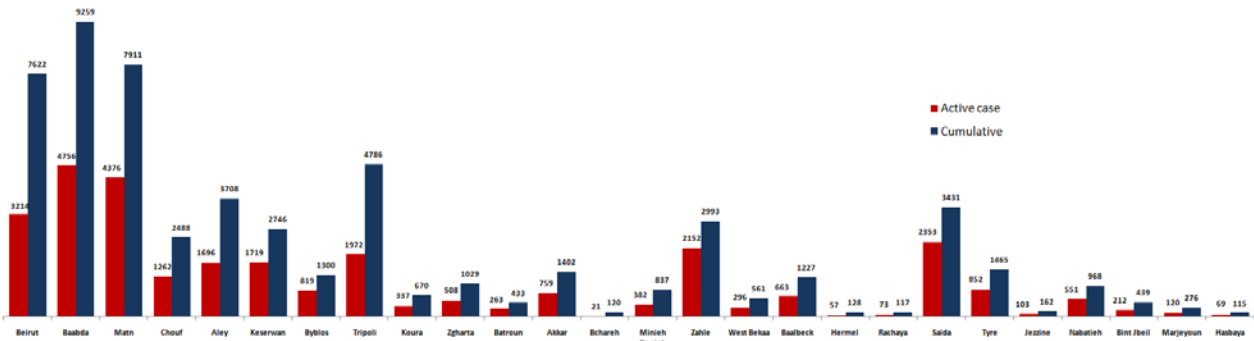
Cases per day



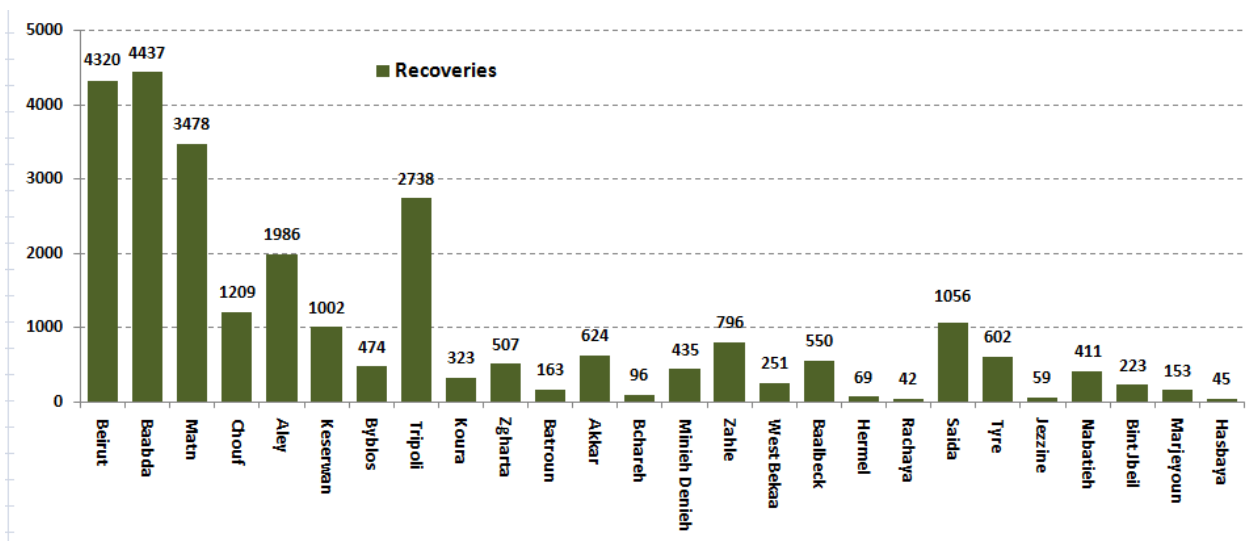
The percentage of positive cases out of the number of daily checks (11-24 Oct 2020)



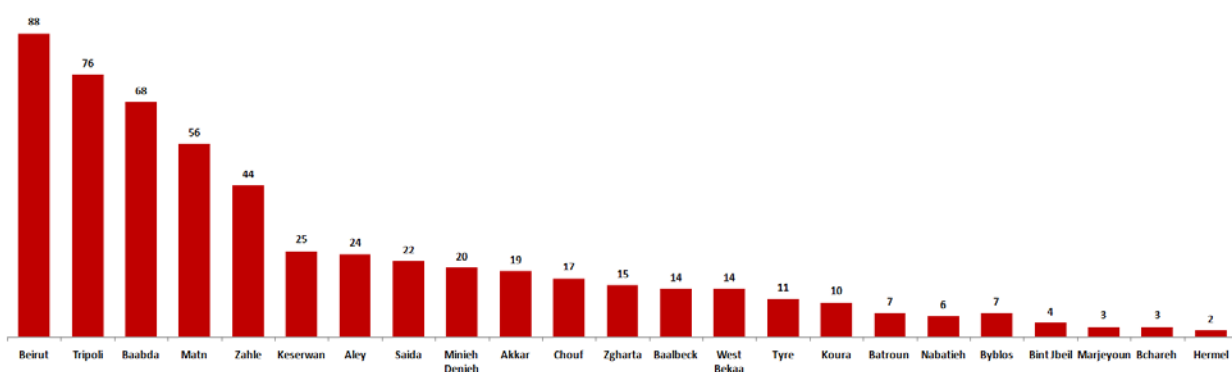
Distribution of Active Cases by Districts



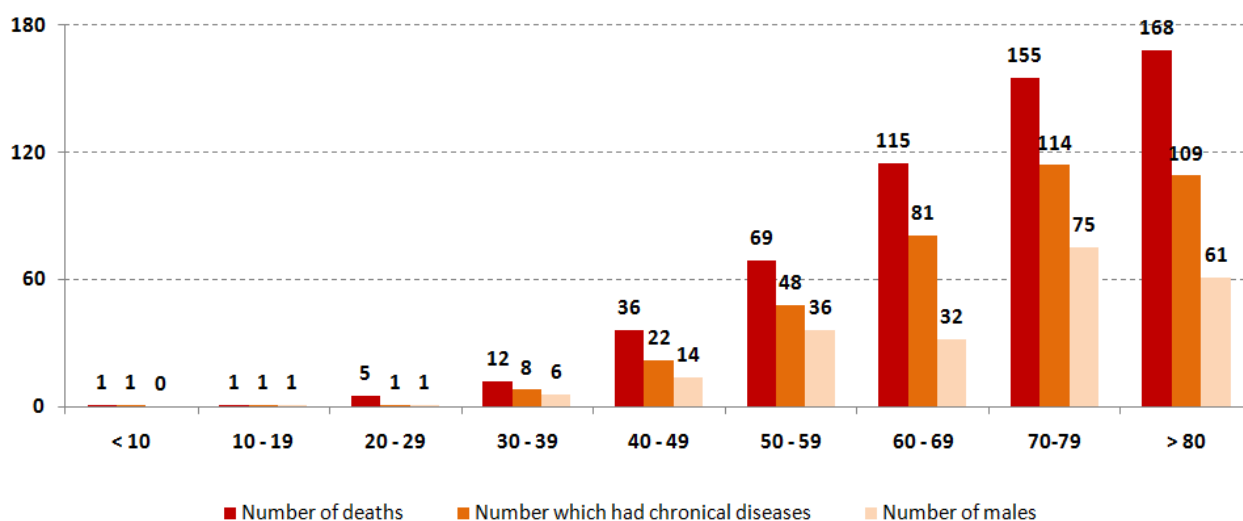
Recoveries



Distribution of deaths by Governorates



Distribution of deaths by Age

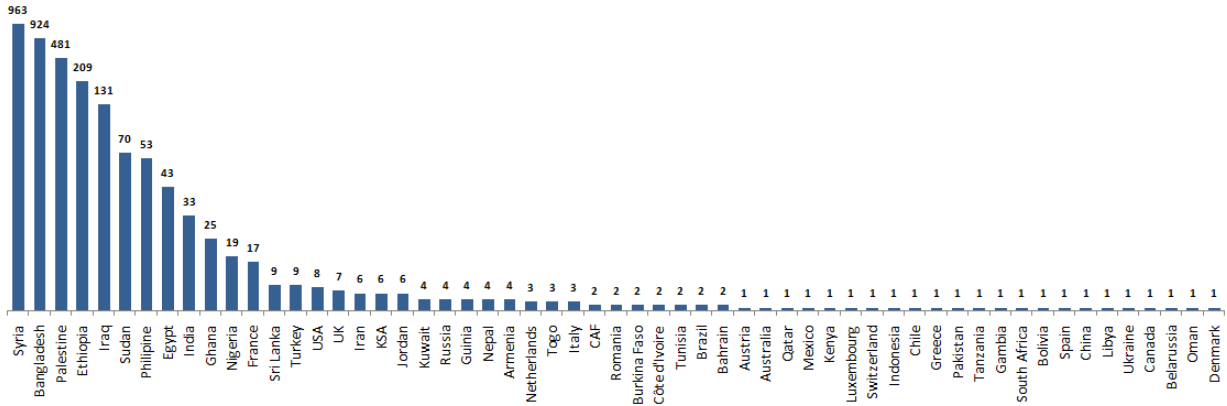


The distribution of the recorded deaths during the past 24 hours

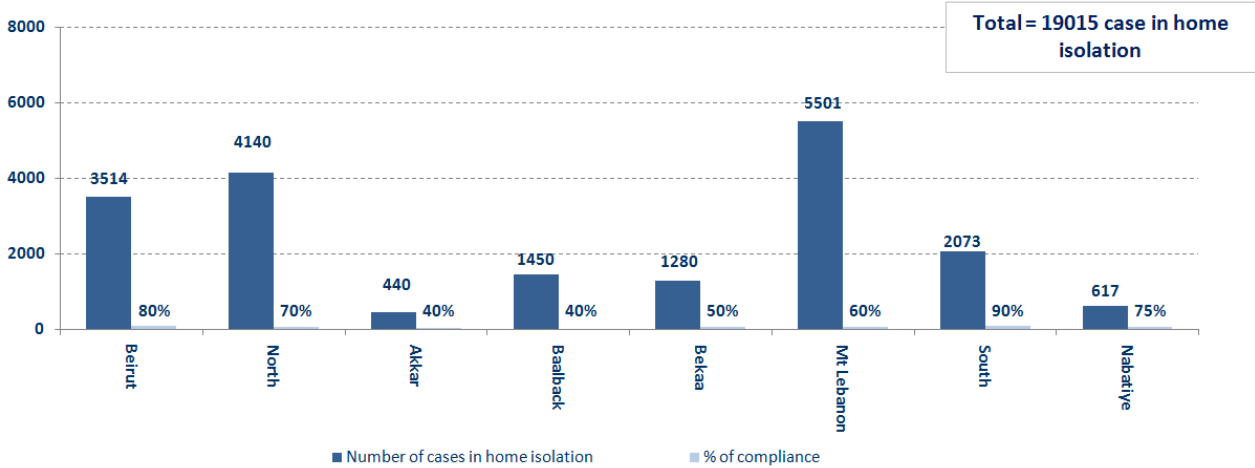
Hospital	Residence	Gender	Age	Chronic
Jesus Heart Hospital	Baabda	Male	83	Yes
Saint George - Hadath	Baabda	Male	58	Yes
Saydet Zgharta	Zgharta	Male	86	Yes

Distribution of cases by nationality

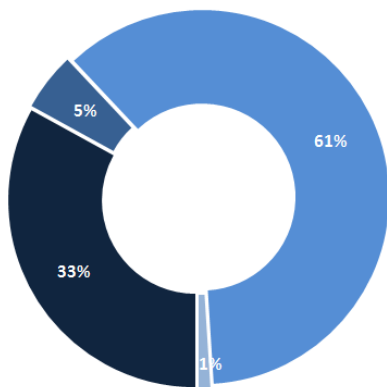
Lebanese : 64417 cases out of 69906 (88%)



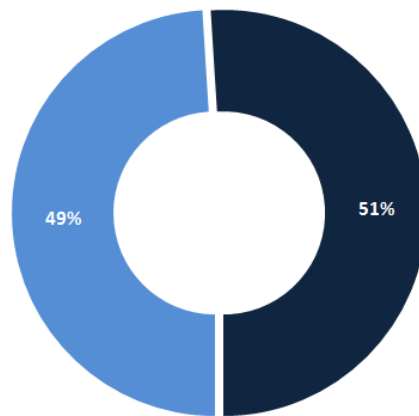
Number of individuals in home isolation and percentage of commitment to isolation



Exposure



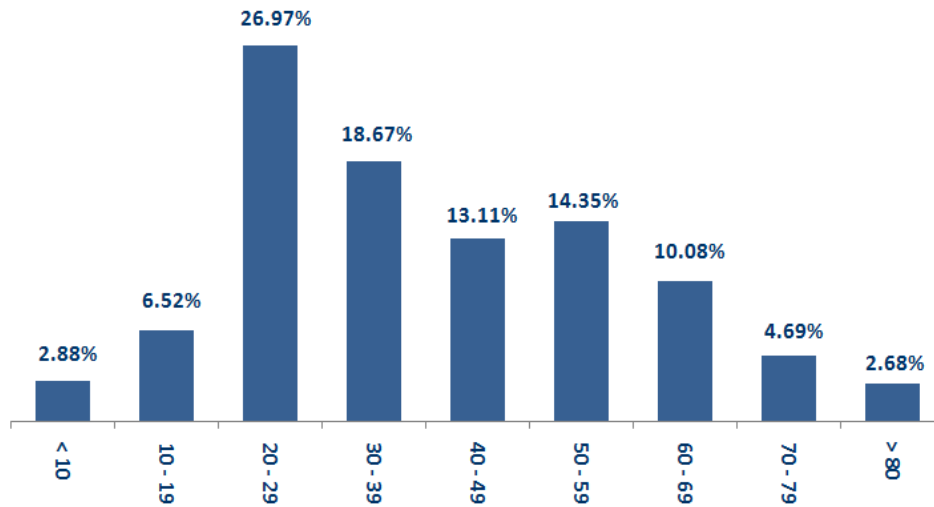
Distribution according to gender



■ Contact with confirmed case ■ Travel related ■ Under investigation ■ Unidentified source

■ Female ■ Male

Distribution by age



Decisions and actions taken – 10/24/2020

Ministry of Public Health

- The Ministry of Public Health reported that PCR tests had been completed for flights that arrived in Beirut and were conducted at the airport on both 10/17/2020 and 10/19/2020, where twenty-six (26) positive cases were recorded, distributed over the following flights:

Arriving from	Company	Flight Number	Number of Positive Cases
N/A			

Lebanese Red Cross

235,498	Number of PCR tests transferred to laboratories	52,396 (234 New)	Number of additional ambulance centers ready to respond	48	ambulance centers	6,897 (57 New)	cases transferred to hospitals
166	Number of volunteers trained to transfer PCR tests	1,498	Number of trained paramedics	8,772	total number of respondents	91,654 (1,530 New)	number of those benefiting from awareness *sessions
967	The number of university volunteers trained to follow up on prevention measures in companies and institutions	291	Number of university volunteers trained to conduct awareness sessions	550	total LRC volunteers for covid19	8,658 (12 New)	number of trained managers for isolation centers
4,348 (2 New)	Number of beneficiaries from educational electronic platforms COVID-19	259,626	Number of distributed equipment	1,246,602	total distriibuted posters, brochures, and flyers on covid19 prevention	687 (11 New)	number of rpisons that have been disinfected

General Directorate of Internal Security Forces

The number of seizure records during the past 24 hours					The total number of records since 03/08/2020		
Written records of violating institutions (absorptive capacity and preventive measures)					12		
Written records of persons violating the decision to wear a mask					0	Beirut	21,462
Written records of people violating the general mobilization decision (Aragil* and social distancing)					234	Mount Leb	20,694
Total					246	Beqaa	8,869
						North	7,564
Beirut	Mount Leb	Beqaa	North	South		South	7,928
66	85	32	8	55		Total	66,517

General Directorate of State Security

- Reporting that 3 state security personnel were infected with the Coronavirus, and were quarantined at their homes.
- 77 The total number of injuries was reported in the General Directorate of State Security.

Beirut	South	North	Akkar	Beqaa	Nabateih	Baalbek Hermel	Mount Leb
50%	48%	43%	40%	66%	58%	N/A	45%

General Directorate of General Security

- Reporting of the death of one person in Rayak Governmental Hospital due to the Corona virus.
- The report that a member of the Lebanese army was infected with the Coronavirus.
- Reporting the commitment of the municipalities to the decision of the Minister of Interior and Municipalities:

Municipalities that abided by the decision	Municipalities didn't abide by the decision
Kobayat (excluding Qalam al-Nufus, shops, and private institutions), Haris, Habbush, Shukin, Numayriyah, Qakai'yah al-Jisr, Ain Kafr Zabad, Taalabaya, Ablah, Jdita, Bareges	Al Manara, Al Rawda, Al Sowairi

- Follow up the implementation of the required security and preventive measures at the airport, ports and border crossings.
- Reporting cases registered in the various districts and cases in home quarantine.

Ministry of Public Works and Transportation

Departing Flights		Arriving Flights	
Number of Flights	37	Number of Flights	39
Number of Departing Individuals	4,181	Number of Arrivals	3,614

Port	Entered			Left		
	Import	Direction	#	Export	Direction	#
Beirut	Containers	Valencia	1	Containers	Alexandrun	1
	Containers	Port Said	1	Containers	Tartous	1
Tripoli	Blank	Limassol	1	Blank	Turkey	1
Saida				Oil Gas	Beirut	1
Total			3			4

General announcements

- The Ministry of Interior and Municipalities issued Decision No. 1334 on 10/23/2020 to amend Resolution No. 1258 related to the continued closure of some villages and towns due to the high number of corona infections in them, based on the recommendations of the small committee of the Committee for Follow-up of Measures and Preventive Measures of Coronavirus.

The main highlights of the decision: Deletion of the following villages and towns from the schedule of Total Closure Resolution No. 1258 of 10/10/2020:

- Adeh - Kesrouan District
- Ajaltoun - Kesrouan District
- Faytroun - Kesrouan District
- Zouk Mosbeh - Keserwan District
- Ghazir - Kesrouan District
- Ghosta - Kesrouan District
- Rayfoun - Kesrouan District
- Ain Alaq - Matn District
- Broumana - Matn District
- Jal el Dib / Bkinaya - Matn District
- Sin El Fil - Matn District
- Baabda / Louaizeh - Baabda District
- Batloun - Chouf District
- Al Rawda - West Bekaa District
- Qaqai`a Al Jisr - Nabatiyeh District

- The Ministry of Education and Higher Education issued Decision No. 498 / M / 2020 on 10/23/2020, which provides for the amendment of Decision No. 463 / M / 2020 on 10/9/2020 so that teaching begins in kindergartens in kindergartens and schools in formal education For the academic year 2020-2021, on Mondays 11/2/2020 instead of Mondays 10/26/2020.

- The Governor of Mount Lebanon issued Decree No. 353/2020 on 10/23/2020 regarding the extension of the emergency measures decision related to limiting the spread of the Corona virus in the town of Bayssour - Aley District, and the most prominent of what was mentioned in it:

- Extending the implementation of Resolution No. 347/2020 dated 10/15/2020 in the town of Bayssour for an additional week from its date, in addition to activating and implementing the measures and procedures imposed by the aforementioned decision during the extension period
- Assigning security forces and municipal police to strictly enforce this decision, and to organize minutes against violators in accordance with the rules
- Assigning the Internal Security Forces to coordinate with the municipality of Bayssour to implement the content of this decision

Note: The decisions can be found at www.drm.pcm.gov.lb

Examples of lack of adherence to safety measures

Failure of some municipalities to abide by the Ministry of Interior and Municipalities Decision No. 1025/2020 related to the closure of towns that have a high risk of the spread of the epidemic.

- Demand gatherings and demonstrations.
- Failure to comply with the preventive measures and procedures required in several stores and markets (putting on a muzzle or face mask, sterilizing hands, maintaining a safe distance).
- Non-compliance with the 50% occupancy rate in several restaurants and amusement game centers.
- Gatherings for social events.
- Failure of those in contact with confirmed cases to adhere to home isolation procedures until the results of the laboratory tests are issued.

If you feel any symptoms, call directly the hotline of the Ministry of Public Health: 1214 or 01/594459

Names of laboratories that do not adhere to the procedures approved by the Ministry of Public Health About the information required to be recorded for infected cases

Laboratory/Hospitals	Number of positive cases without specifying the place of residence
Al Hadi Lab – Haret Hrik	47
Army Hospital	44
INOVIE Lab – Al Fayadeih	33
RHUH	26
AUBMC	25
Al Mashriq Lab	23
Al Karim Lab	22
Baalbeck Gov Hospital	20
Saint George – Hadath	12
Rizk Hospital	10
Doctors Center	9
Rafik Hariri International Airport	8
Al Nini Hospital	8
Mount Leb Hospital	7
Al Nabateih Gov Hospital	6
Al Mazloum Hospital	6
Fountana Lab	5
Kesrwen Medical Center	5
Abu Jawdeh Hospital	5
Tripoli Gov Hospital	5
The Sacred Heart Hospital	4
ADC Lab	4
Hotel Due Hospital	4
Ragheeb Hareb Hospital	4
Hamoud Hospital	4

Laboratory/Hospitals	Number of positive cases without a phone number
RHUH	14
Al Hadi Lab – Haret Harik	10
INOVIE - Faydaeih	7

A list of the laboratories accredited by the MoPH to conduct PCR tests

المختبرات الحكومية المؤهلة إجراء التشخيص المخبري لفيروس كورونا بطريقة الـ RT-PCR

المختبر	الموقع
مستشفى رفيق الحريري الجامعي RHUH	بيروت
مستشفى حلبا الحكومي	حلبا
مستشفى طرابلس الحكومي	طرابلس
مستشفى البترون الحكومي	البترون
مستشفى قنوح كسروان الحكومي (البنوار)	كسروان
مستشفى نبيه يزّي الحكومي الجامعي	البيطية
مستشفى نينين الحكومي	نينين
مستشفى بنت جبيل الحكومي	بنت جبيل
مستشفى بعطك الحكومي	بعطك
مستشفى الرئيس الياس الهراوي الحكومي	زحلة

مختبرات المستشفيات العسكرية

Hôpital Militaire Central	المستشفى العسكري المركزي في بيروت	بيروت
---------------------------	-----------------------------------	-------

المختبرات المؤهلة لأخذ عينات "المسحات الأنفية" بطريقة Drive- thru

مختبر ميديكال دياغنوستيك تريتمانت سنتر (الحمراء) Medical Diagnostic Treatment Center (MDTC)	بيروت
مختبر ميد لاب MedLab SAL CIC ALS (الحمراء – الجفونور)	بيروت
مختبرات عيتاني Itani Medical Laboratories (المزرعة)	بيروت
مختبر أ ب سي ABC Laboratories	الأشرفية
مختبرات معوض الطبية Mouawad Medical Laboratory	الشيح
مختبرات الشياح (د. فؤاد ربحان) Rihan Medical Center	الشيح
مختبر إكسبيرت لاب Expert Lab	المنصورة
مختبر لايف لاب Life LAB	بعطك
مستشفى الرياق Riyak Hospital	رياق

المختبرات الخاصة المؤهلة لإجراء التشخيص المخبري لفيروس كورونا بطريقة الـ RT-PCR

المختبر	الموقع
AUBMC مستشفى الجامعة الأميركية	بيروت
Hotel-Dieu de France (HDF) مستشفى أوتيل ديو الجامعي	بيروت
مختبرات رودولف ميريو (الجامعة اليسوعية – المتحف) Laboratoire Rodolphe Mérieux (Université Saint-Joseph)	بيروت
Saint-George Hospital - UMC مستشفى القديس جارجيوس الجامعي	بيروت
Makassed General Hospital مستشفى المقاصد	بيروت
LAU Medical Center - Rizk Hospital مستشفى رزق الجامعي	بيروت
Hôpital Libanais Geitawi - CHU مستشفى اللبناني الجعيتاوي الجامعي	بيروت
Hôpital Notre-Dame du Rosaire مستشفى الوردية	بيروت
Doctor 's Center مختبر مركز الأطباء	بيروت
Fontana Laboratories (الحمرا) مختبر فونتانا	بيروت
مختبر الأمن العام (العنابية)	بيروت
Laboratoire Jabre-Ghorra مختبرات جبر وغرة	بيروت
Saint Marc Medical & Diagnostic Center مختبر السان مارك	بيروت
Laboratoire Moderne (Modern Lab- Berjaoui) المختبرات الحديثة	الغبيوي
Sahel General Hospital (SGH) مستشفى الساحل	الغبيوي
مستشفى الزهراء الجامعي	الغبيوي
Al Zahraa Hospital - UMC مستشفى الرسول الأعظم	برج الراجحة
مستشفى بهمن	
Al Rassoul Al Aazam Hospital Bahman Hospital	حارة حريك
مختبر ناتيونال دياغنوستك سرفيس كومباني National Diagnostic Services Company (NDSC)	حارة حريك
Medical Diagnostic Center مختبر الدكتور محمود عثمان - مركز التحاليل الطبية	لرابعة
American Diagnostic Center (ADC) مختبر أميريكين دياغنوستك سنتر	الجناح
Mount Lebanon Hospital مستشفى جبل لبنان	بعنا
Hôpital Saint-George – Hadath مستشفى السان جورج الحدث	بعنا
Al Hadi Laboratory مختبر الهادي	بعنا
INOIE-Liban مختبر	بعنا

Hôpital du Sacré- Coeur مستشفى قلب يسوع	الحازمية
Clinigene مختبر كلينيجان	الحازمية
Hôpital Dr.Samir Serhal مستشفى سرحال	المتن
Transmedical for Life مختبر ترانس ميدكال فور ليف	المتن
Haroun Hospital مستشفى هارون	الزلفا
Bellevue Medical Center (BMC) مستشفى بلفو	المنصورة
Hôpital Albert Haykal مستشفى هيكال	الكورة
Centre Hospitalier du Nord (CHN) مركز الشمال الإيستفاني	زغرنا
Mazloum Hospital مستشفى المظلوم	طرابلس
Al Mounla Hospital مستشفى الملا	طرابلس
Nini Hospital مستشفى النيني	طرابلس
مختبر ميكروبيولوجيا الصحة والبيئة LMSE - المعهد العالي للدكتوراه، الجامعة اللبنانية	طرابلس
CHU - Notre-Dame des Secours مستشفى سيدة المعونات الجامعي	جبل
Lab Akiki & Boulos مختبر عقيقي وبولس	جبل
Centre Médical Wakim مختبر واكيم	جونية
Ain Wazein Hospital مستشفى عين وزين	الشوف
Hammoud Hospital UMC مستشفى حمود الجامعي	سيدا
Al Karim Medical Laboratory (KML) مختبر الكريم	سيدا
Sheikh Ragheb Harb Hospital مستشفى الشيخ راجب حرب	البيمنة
Sabbah Diagnostic Center (SDC) مختبر الصباح	البيطية
Jabal Amel Hospital مستشفى جبل عامل	صور
Mashrek Diagnostic Center (MDC) مختبر المشرق	صور
Dar Al Amal University Hospital مستشفى دار الأمل الجامعي	بعلبك
Khoury General Hospital مستشفى خوري	زحلة
Medical Care Center (MCC) مختبر ميدكال كير سنتر	زحلة