



Lebanon National Operations Room Daily Report on COVID-19

Wednesday, September 23, 2020

Report #189

Time Published: 10:00 PM

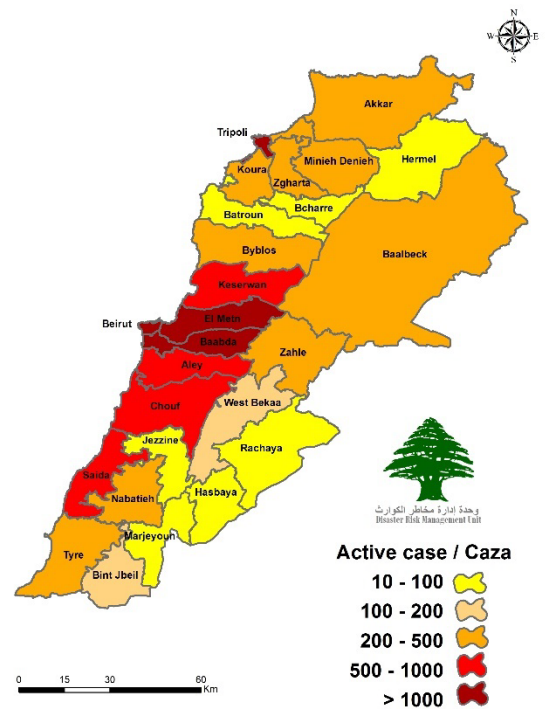
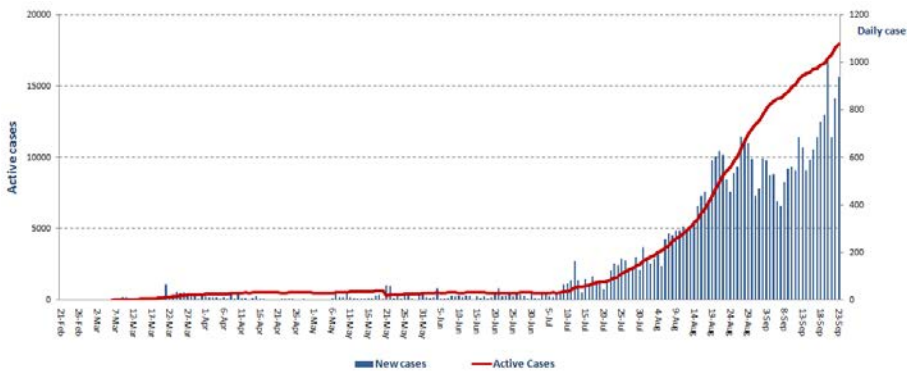
13,257 Total Recoveries	328 Total Death Since 21/2/2020	31,778 Total Cases Since 21/2/2020	940 New Cases		
649 New Recoveries	13 New Deaths	1,595 Expats	30,183 Locals	17 Expats	923 Locals
126 Cumulative in ICU	466 Hospitalized Cases	17,923 Active Cases	982 Medical Staff Cases		
1 New Cases in ICU	340 Mild Cases	17,457 Home Isolation	18 New Cases in Medical Staff		
Lebanon compared to the world			717,102 Conducted PCR Tests Since 21/2/2020		
Registered Cases	31,778	31,891,188			
Total Deaths	328	971,800			
Percentage of Deaths	1,03%	3,06 %			
Total Recoveries	13,527	23,487,411			
			1,821 Expats PCR Tests	11,289 Locals PCR Tests	

Source : Data Issued by Ministry of Public Health

*The Above data was last updated at 10:00 PM

Number of Cases by Location

- 6,355 case is Under investigation



وحدة ادارة مخاطر الكوارث
Disaster Risk Management Unit

Active case / Gaza

10 - 100

100 - 200

200 - 500

500 - 1000

> 1000

Beirut	Cases
Ein El Mraysseh	2
Wata El Mseitbeh	1
Hamra	10
Raouche	7
Mseitbeh	8
Mazraa	3
Qoreitem	2
Tariq Jdeedeh	14
Ras El Nabeh	8
Achrafieh	5
Mar Elias	4
Tallet El Khayyat	2
Basta Tahta	5
Sanayeh	1
Zarif	1
Basta El Fawka	2
Borj Abi Haydar	2
Ras Beirut	1
Manara	6
Others	13
Baabda	Cases
Chiah	8
Jnah	4
Ouzai	3
Bir Hassan	6
Forn El Shubbak	3
Kfarshima	3
Ein El Rimmaneh	5
Haret Hreik	16
Laylaki	3
Borj El barajneh	15
Mreijeh	8
Hadat	11
Hazmieh	6
Baabda	6
Tahweetet El Ghadir	1
Madeeneh El Riadih	1
Wadi Chahrour	1
Ghobeiri	4
Bsaba	2
Jumhour	1
Hlalieh	2
Arbaniyyeh	1
Others	6
Zahle	Cases
Bar Elias	6
El Rassieh	1
Saadnayel	7
Majdel Anjar	3
Hoch El Oumara	6
Forzol	1
Hezerta	3
Wadi El Arayesh	2
Maksi	1
Jdita	2
Kab Elias	2
Taalbaya	3
Kfarzabad	3
Others	6

Matn	Cases
Borj Hammoud	8
Bouchrieh	4
Sin El Fil	11
Jisr El Basha	1
Jal el Deeb	5
Jdeidet El Metn	6
Horch Tabet	1
Dekwene	9
Naqqash	4
Antelias	4
Sed El Baouchrieh	3
Zalka	4
Dbayeh	1
Mansouriyeh	3
Rawda	3
Qornet Chehwan	3
Bqannaya	1
Mkalles	2
Sabtieh	3
Byaqout	1
Bekfayya	2
Broummana	2
Mazraet Deir Awkar	1
Beit Merry	2
Fanar	3
Bsalim	9
Dayshounieh	1
Ein Saadeh	4
Deek el Mahdi	3
Mazraet Yashouh	2
Nabayh	1
Baabdat	2
Rabwe	2
Ein Aar	1
Aintoura	1
Zikrit	5
El Mayasa	1
Roueisseh	1
Others	2
Chouf	Cases
Naameh	3
Baal El Naameh	1
Barja	6
Jadra	1
Chehim	5
Ketermaya	2
Siblin	1
Ein El Asad	2
Jahlieh	2
Nmghayrieh	1
Qreeaa	1
Zaarourieh	1
Khraybe	2
Bsaba	1
Botmeh	2
Maaser El Chouf	1
Others	2
Nabatieh	Cases
Nabatieh El Tahta	1
Nabatieh El Fawqa	1
Others	1

Aleyh	Cases
Amrousiyyeh	13
Oumara	6
Bleibel	4
Aley	1
Hay El Sillom	16
Aramoun	26
Aitat	1
Bshamoun	3
Houmal	2
Khaldeh	4
Kahale	1
Souk El Ghareb	2
Ein Dara	1
Majdel Baana	1
Zghorta	Cases
Zghorta	1
Erdeh	3
Majdlayya	1
Ehden	2
Meryata	3
Rasheen	1
Sebael	1
Others	4
Baalbak	
Baalbak	4
Sereen El Fawka	7
Talya	1
Hoch El Rafqa	5
Temnin El Fawka	1
Brital	1
Others	1
Jbeil	Cases
Jbeil	1
Qartaboun	4
Amchit	6
Halat	2
Nahr Ibrahim	5
Hsoun	1
Mastita	1
Hosraayel	3
monsef	1
Ferhet	1
Fetre	1
Others	1
Tripoli	Cases
Zaytoun	1
El Hadid	1
Qebbe	4
Zahrieh	2
Tebbaneh	3
Min	13
Qalamoun	1
Beddawi	7
Others	18
Akkar	Cases
Bebnin	1
Nahr El Bared	1
Fneidek	1
Bazzal	1
Wadi Khaled	1
Others	4

Kesrwen	Cases
Sarba	7
Bouar	1
Kaslik	1
Haret Sakhr	1
Adonis	4
Sahel Alma	3
Safra	1
Zouk Mosbeh	3
Kfaryassine	1
Ghazir	1
Kleiaat	1
Ashkout	1
Tabarja	1
Adma Dafneh	3
Ballouneh	1
Sehaile	1
Daraya	2
Jeita	2
Ftough Fatqa	1
Chnaniir	1
Dlehta	1
Others	2
Beqaa Gharby	Cases
Mashghara	5
Mansoura	2
Kamed El Loz	1
Ghazzeeh	1
Tal Zanoub	1
hareemeh	3
Sweiry	3
Saida	Cases
Saida Kadeemeh	1
Haret Saida	5
Ein el Helwe	4
Hlalieh	1
Miyeh W Miyeh	2
Abra	4
Bqosta	1
Qrayeh	1
Bablieh	1
Majdlyoun	1
Anqoun	1
Ein El delb	2
Ghazieh	2
Maghdoushe	1
Zeeta	1
Khrayeb	1
Sarafand	1
Tefahta	1
Marwanieh	1
Others	26
Meneh Duniyeh	Cases
Menyeh	5
Seer Dunniyeh	1
Ezel	1
Bakhoun	2
Marjeyoun	Cases
Marjeoyoun	1
Borj El Mulouk	1
Khiyam	3
Markaba	1

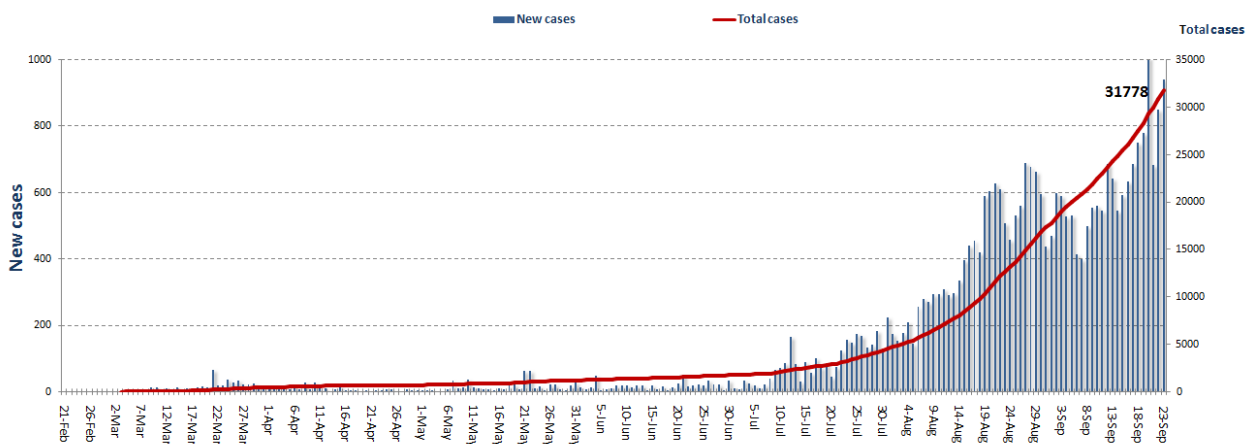
Koura	Cases
Amyoun	1
Kosba	1
Kefraya	2
Deddeh	1
Ras Masqa	2
Touratej	2
Anfeh	5
Dahr El Ein	2
Bohsas	1
Barsa	1
Nakhleh	1

Rashayya	Cases
Rashaya El Fawka	1
Others	1
Jezzine	Cases
Qrahy Maknonieh	1
Deir Mashmoushe	1
Nabatieh	Cases
Nabatieh El Tahta	1
Nabatieh El Fawqa	1
Others	1

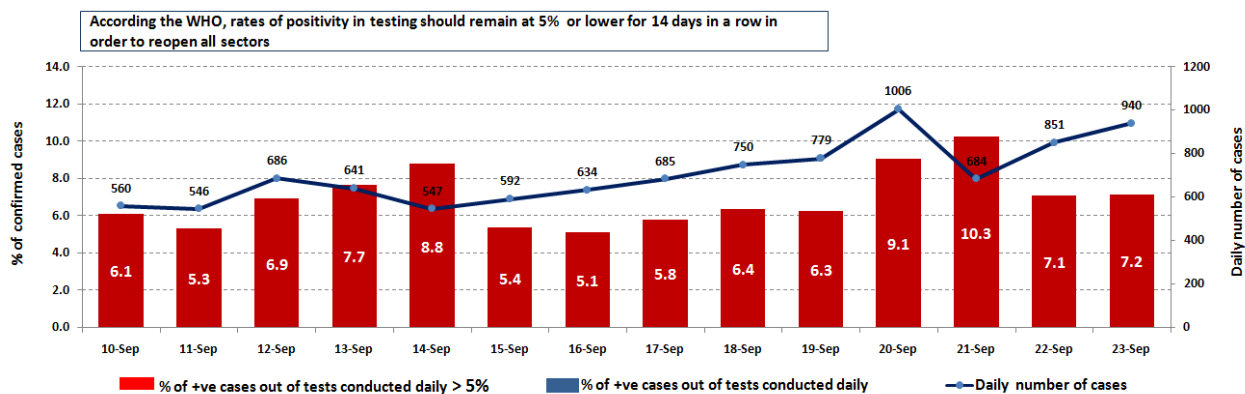
Batroun	Cases
Wej El Hajar	1
Shekka	2
Tannourine Tahta	1
Tannourine Fawka	1
Others	2
Sour	Cases
Jouaya	1
Ter Harfa	1
Others	4

Bnt Jbeil	Cases
Rmeish	5
Tebnin	1
Kouneen	1
Sultanieh	1
Hasbaya	Cases
Hasbaya	1
Khalwt Hasbaya	1

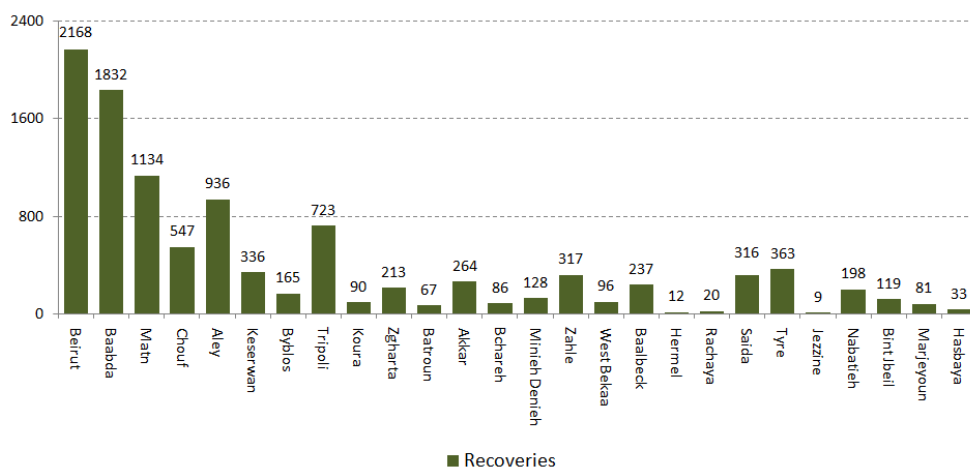
Cases per day



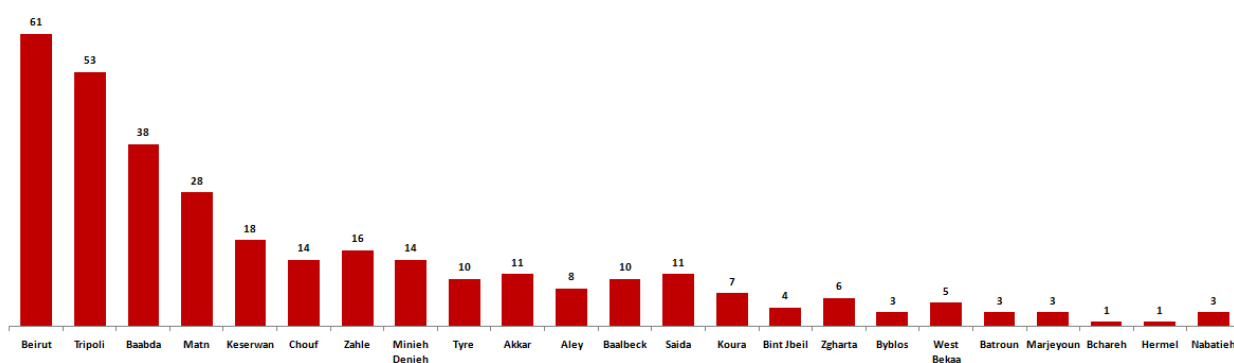
The percentage of positive cases out of the number of daily checks (10 September to 23 September 2020)



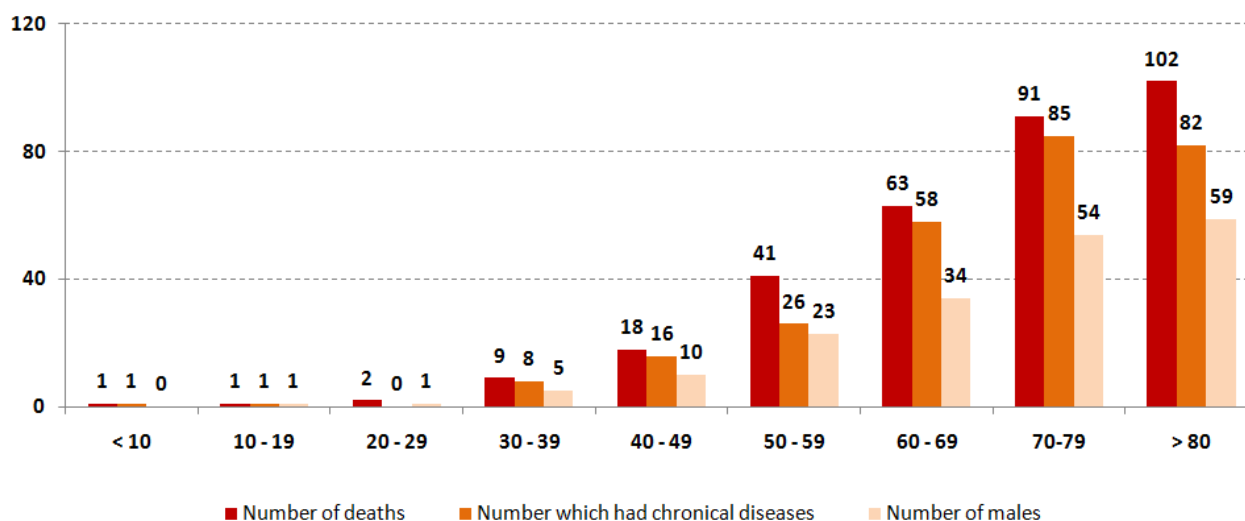
Recoveries



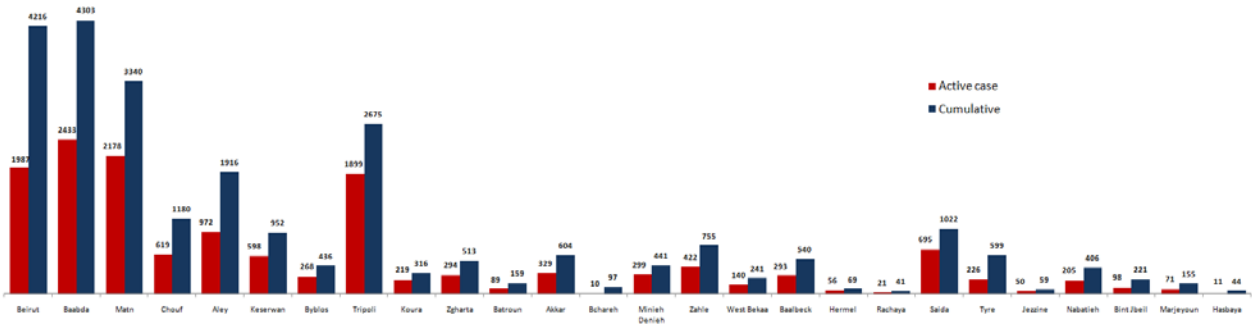
Distribution of deaths by Governorates



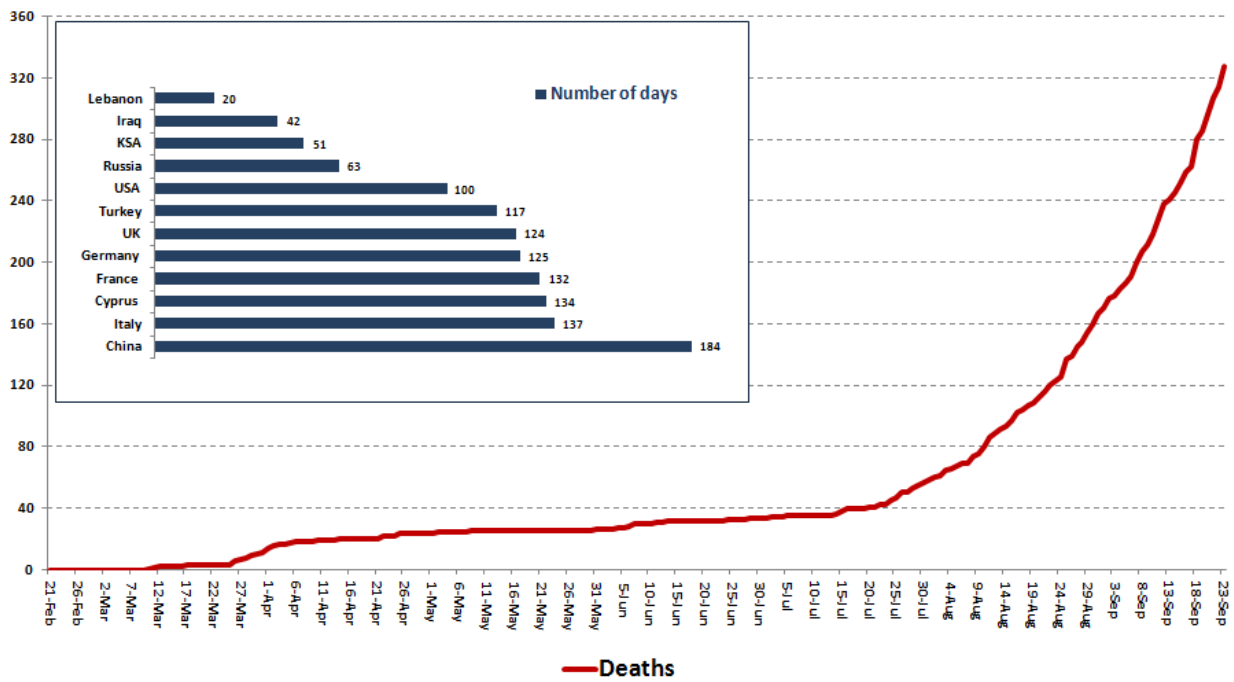
Distribution of deaths by Age



Distribution of Active Cases by Districts



Comparison of the rate of doubling of the number of deaths in Lebanon with other countries (death doubling rate)

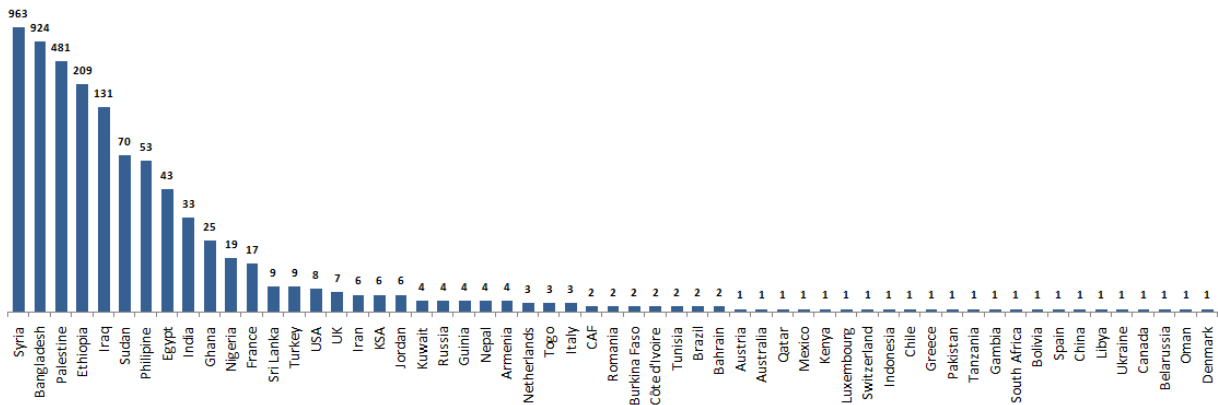


The distribution of the recorded deaths during the past 24 hours

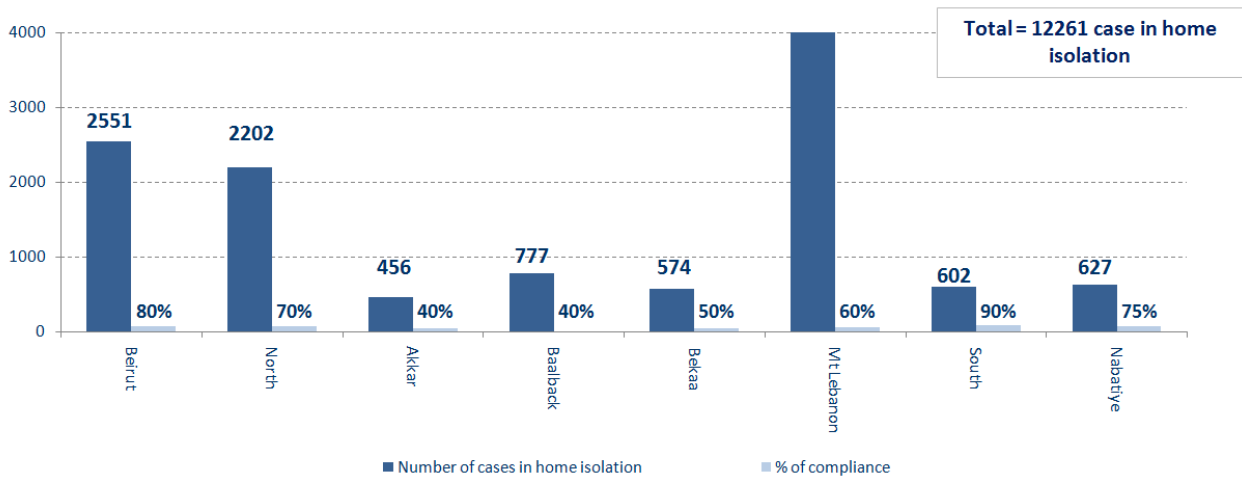
Hospital	Residence	Gender	Age	Chronic
Roum	Baabda	Male	83	Yes
Tripoli Gov.	Akkar	Male	74	Yes
Tripoli Gov.	Tripoli	Female	86	Yes
Herawi Gov.	Zahle	Male	100	Yes
Herawi Gov.	Zahle	Male	66	N
Saint Joseph	Keserwan	Female	74	Yes
Home	Koura	Male	44	
Hamchari	Saida	Male	95	Yes
Harire Gov.	Baabda	Male	90	Yes
Harire Gov.	Baabda	Male	99	Yes
Berri Gov.	Nabatieh	Female	58	Yes
El Nini	Zgharta	Female	75	Yes
Saint Louis	Keserwan	Female	66	

Distribution of cases by nationality

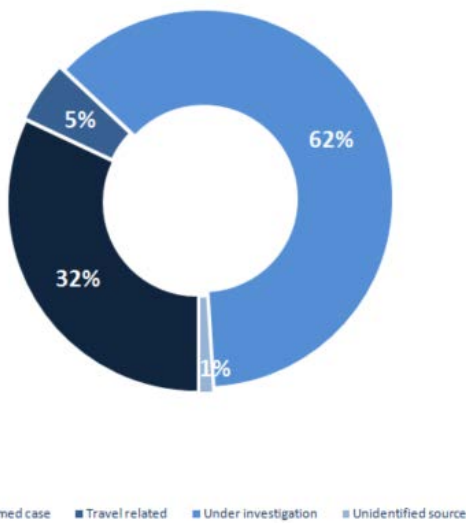
Lebanese : 27750 cases out of 30838 (88%)



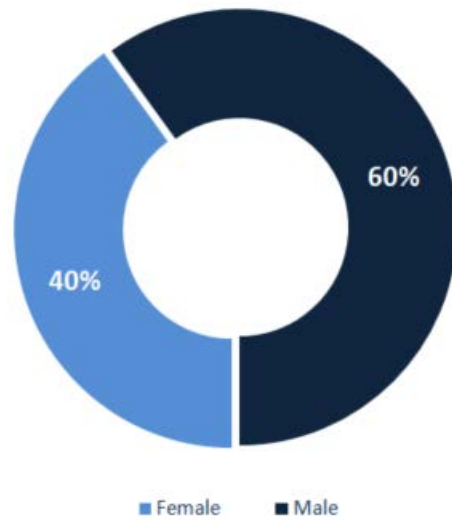
Number of individuals in home isolation and percentage of commitment to isolation



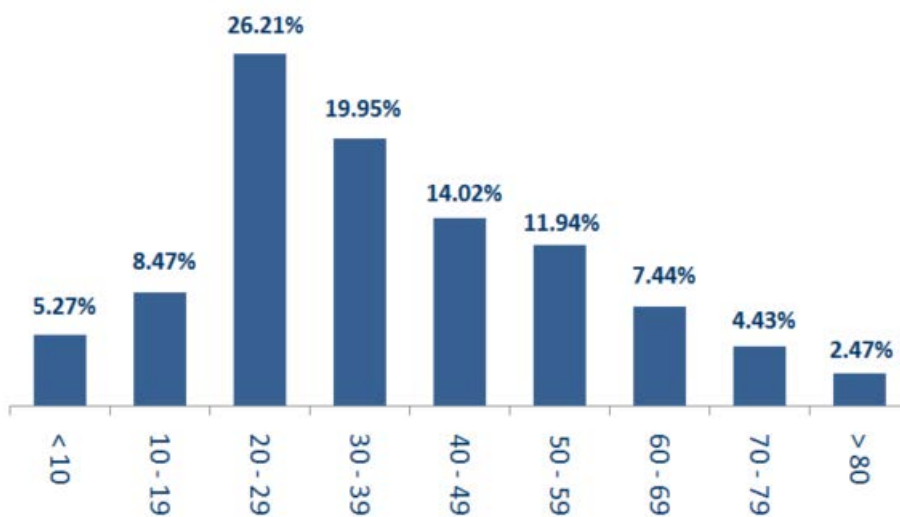
Exposure



Distribution according to gender



Distribution by age



The number of beds available for those infected with Coronavirus and the occupancy rate



For daily information on all the details of the bed distribution available for Covid-19 patients in the various governorates according to the hospitals

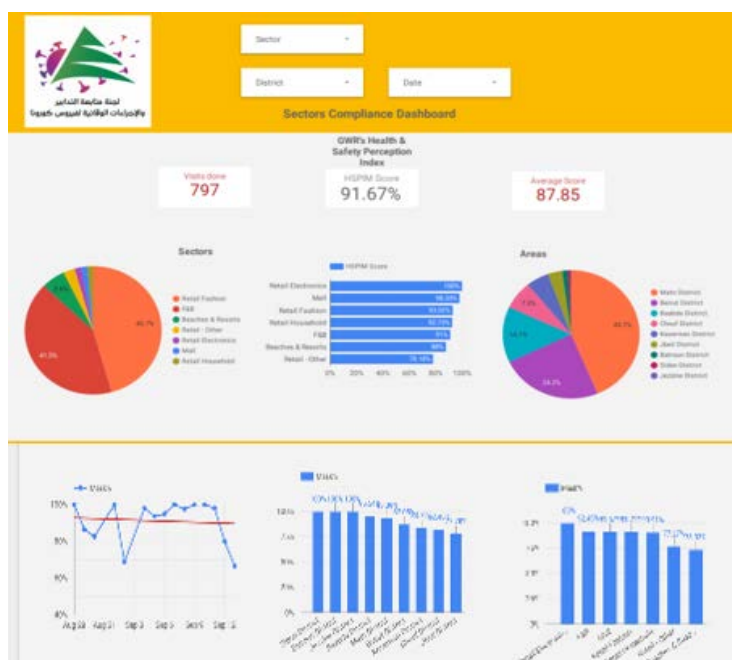
- Computer: <https://gisleb.cnrs.edu.lb/portal/apps/opsdashboard/index.html#/34b32db8030d4f229fc5db9ab686cca9>
- Mobile: <https://shorturl.at/cnqJ2>

Online platform to track sector commitment in general mobilization procedures

Based on the recommendation issued by the National Committee for Follow-up of Preventive Measures and Measures to Confront the Coronavirus to open all sectors, provided that the general mobilization procedure (safe distance, muzzle, and hand sterilization) be applied, a special electronic platform was created that allows monitoring and measuring the percentage of commitment by various sectors on an ongoing basis.

The detailed results can be viewed directly at the following link:

<http://bit.ly/covidsectordata>



Decisions and actions taken – 23/09/2020

Ministry of Public Health

The Ministry of Public Health issued the updated list of laboratories accredited by the Lebanese Ministry of Public Health to conduct PCR tests for Coronavirus (a copy of the laboratory names is attached at the end of the report).

- The Ministry of Public Health issued the results of additional examinations for incoming trips to Lebanon on 20 and 21 September 2020, as 8 new infections were recorded among the arrivals, distributed over the following trips:

Arriving from	Company	Flight Number	Number of Positive Cases
20/9/2020			
Paris	Air France	566	1
Istanbul	Turkish Airlines	826	1
Istanbul	MEA	266	1
21/9/2020			
Istanbul	MEA	268	3
Istanbul	MEA	266	1
Al Najjaf	Iraqi Airways	138	1
			8

Lebanese Red Cross

233,049 (547 New)	Number of PCR tests transferred to laboratories	45,389 (237 New)	Number of additional ambulance centers ready to respond	48	ambulance centers	5,148 (58 New)	cases transferred to hospitals
166	Number of volunteers trained to transfer PCR tests	1,498	Number of trained paramedics	8,601	total number of respondents	77,266 (60 New)	number of those benefiting from awareness *sessions
967	The number of university volunteers trained to follow up on prevention measures in companies and institutions	291	Number of university volunteers trained to conduct awareness sessions	550	total LRC volunteers for covid19	8,440	number of trained managers for isolation centers
4,212 (1 New)	Number of beneficiaries from educational electronic platforms COVID-19	90,047 (188 New)	Number of distributed equipment	1,236,031	total distributed posters, brochures, and flyers on covid19 prevention	536 (10 New)	number of prisons that have been disinfected

General Directorate of State Security

- Investigating and following up on suspected and positive cases and cases in home quarantine for residents and expatriates.
- Sending warnings and closing a number of violating commercial stores in the various regions.

Beirut	South	North	Akkar	Begaa	Nabateih	Baalbek Hermel	Mount Leb
25%	51%	48%	37%	N/A	60%	N/C	36%

General Directorate of Internal Security Forces

- Internal Security Forces circulated the preventive measures that must be followed when traveling by cars and using shared transportation and public cars.
- Writing arrest records against violators of the general closure decision

The number of seizure records during the past 24 hours					The total number of records that have been organized against violators of the general mobilization decisions since 03/08/2020		
Written records of violating institutions (absorptive capacity and preventive measures)					0		
Written records of persons violating the decision to wear a mask					0	Beirut	20,642
Written records of people violating the general mobilization decision (Aragil* and social distancing)					27	Mount Leb	18,813
Total					27	Beqaa	8,047
						North	6,784
Beirut	Mount Leb	Beqaa	North	South	South	6,803	
0	0	9	0	18	Total	61,089	

Ministry of Public Works and Transportation

Departing Flights		Arriving Flights	
Number of Flights	28	Number of Flights	31
Number of Departing Individuals	3,362	Number of Arrivals	2,270

Port	Entered			Left		
	Import	Direction	#	Export	Direction	#
Beirut	Fuel	Jeyyeh	1	Containers	Tartous	1
	Containers	India	1			
Jeyyeh				Fuel Oil	Zouk Port	1
			2			2

General announcements

The Ministry of Foreign Affairs and Expatriates issued a circular to all Lebanese missions abroad on September 21, 2020, which includes the general conditions for coming to Lebanon, based on the recommendations of the Committee for Follow-up of Preventive Measures and Measures to Confront the Coronavirus. The Ministry also circulated to foreign embassies in Lebanon and Lebanese missions abroad the circular issued by the General Directorate of Civil Aviation at the Ministry of Public Works and Transport about procedures related to all arrivals to Lebanon, starting from September 23, 2020. The Ministry also follows up with the embassies the situation of the Lebanese in facing the virus abroad, In addition to coordinating with foreign embassies regarding the aid that comes to Lebanon to face the crisis.

The General Directorate of Civil Aviation at the Ministry of Public Works and Transport issued Circular No. 53/2 on September 22, 2020, supplementing Circular No. 52/2 according to which the Radisson Blue Verdun Hotel was added to the list of hotels approved by the Ministry of Public Health in Lebanon.

The following recommendations were issued by the Committee for Follow-up of Preventive Measures and Procedures for Coronavirus on 9/21/2020:

- The Ministry of Public Health activates the work of the epidemiological surveillance program, ensures that hospital and health institutions follow the agreed-upon risk containment protocol, circulates to laboratories, determines the timing for conducting examinations for contacts with a minimum of five days, develops a plan to increase the number of PCR examinations for contacts, studies and approves the proposed tariff To receive cases of Coronavirus infection in private hospitals and to activate adherence to the mechanism of reception, entry and exit of patients infected with Coronavirus in hospital institutions
- The Ministry of Public Health pays the material allowance owed to the directors of the isolation centers, provided that the international donors work to activate coordination and secure the operational costs of these centers
- The Syndicate of Private Hospitals and Doctors in Beirut and the North and the Syndicate of Nurses and Nurses in Lebanon set up an emergency line for each of them and put it at the disposal of health sector workers to report any problem or complaint related to the non-application or misapplication of the protocol for containing risks within health and hospital institutions.
- The Syndicate of Private Hospital Owners will work to open and operate special departments for Corona patients in all category "A" hospitals, while providing incentives for doctors, nurses, and workers in these departments.
- The Ministry of Interior and Municipalities and the Ministry of Tourism to activate the procedures of the third phase of the plan to reopen the generalized sectors in support of the recommendations issued on August 26, 2020 in terms of taking legal measures against violators
- The Ministry of Interior and Municipalities and the Ministry of Tourism to activate the procedures of the third phase of the plan to reopen the generalized sectors in support of the recommendations issued on August 26, 2020 in terms of taking legal measures against violators
- The Ministry of Justice works to reduce overcrowding in prisons
- Developing an action plan for responding and containing cases infected with Coronavirus in health care homes by the Ministries of Public Health and Social Affairs
- Include the daily report issued by the National Operations Room for Disaster Management an interactive map showing the affected cases for every thousand residents for fourteen days in each district, so that appropriate measures can be taken
- Waiting to close the sectors and work to implement and activate all recommendations while continuing to assess the reality of the epidemic
- The Ministry of Information circulates recommendations to citizens in order to raise awareness and adhere to preventive measures and procedures
- The General Directorate of Civil Aviation at the Ministry of Public Works and Transport issued Circular No. 52/2 on September 21, 2020 to all airlines and ground services companies operating at Rafic Hariri International Airport regarding procedures related to passengers arriving in Lebanon starting from September 23, 2020

Examples of lack of adherence to safety measures

- Demand gatherings and demonstrations.
- Failure to comply with the preventive measures and procedures required in a number of stores and markets (putting on a muzzle or face mask, sterilizing hands, maintaining a safe distance).
- Non-compliance with the 50% occupancy rate in several restaurants and amusement game centers.
- Gatherings for social events.
- Failure of those in contact with confirmed cases to adhere to home isolation procedures until the results of the laboratory tests are issued.

If you feel any symptoms, call directly the hotline of the Ministry of Public Health: 1214 or 01/594459

A list of the laboratories accredited by the MoPH to conduct PCR tests

المختبرات الحكومية المؤهلة لإجراء التشخيص المخبري لفيروس كورونا بطريقة الـ RT-PCR

الموقع	المختبر
بيروت	مستشفى رفيق الحريري الجامعي RHUH
حيفا	مستشفى حيفا الحكومي
طرابلس	مستشفى طرابلس الحكومي
البترون	مستشفى البترون الحكومي
كسروان	مستشفى فتوح كسروان الحكومي (البوار)
البطنة	مستشفى نبيه يزى الحكومي الجامعي
تبنين	مستشفى تبنين الحكومي
بنت جبيل	مستشفى بنت جبيل الحكومي
بعلبك	مستشفى بعلبك الحكومي
زحلة	مستشفى الرئيس الياض الهراوي الحكومي

المختبرات الخاصة المؤهلة لإجراء التشخيص المخبري لفيروس كورونا بطريقة الـ RT-PCR

الموقع	المختبر
بيروت	مستشفى الجامعة الأميركية AUBMC
بيروت	مستشفى أوتيل ديو الجامعي Hotel-Dieu de France (HDF)
بيروت	مختبرات رودولف ميريو (الجامعة اليسوعية - المتحف) Laboratoire Rodolphe Mérieux (Université Saint-Joseph)
بيروت	مستشفى القديس جاورجيوس الجامعي Saint-George Hospital - UMC
بيروت	مستشفى المقاصد Makassed General Hospital
بيروت	مستشفى رزق الجامعي LAU Medical Center - Rizk Hospital
بيروت	مستشفى اللبناني الجعيتاوي الجامعي Hôpital Libanais Geitawi - CHU
بيروت	مستشفى الوردية Hôpital Notre-Dame du Rosaire
بيروت	مختبر مركز الأطباء Doctor 's Center
بيروت	مختبر فونتانا (الحمرا) Fontana Laboratories
بيروت	مختبر الأمن العام (العنلقية)
بيروت	مختبرات جبر وغرة Laboratoire Jabre-Ghorra
بيروت	مختبر السان مارك Saint Marc Medical & Diagnostic Center
لغبري	المختبرات الحديثة Laboratoire Moderne (Modern Lab- Berjaoui)
لغبري	مستشفى الساحل Sahel General Hospital (SGH)
لغبري	مستشفى الزهراء الجامعي
برج الزاينة	مستشفى الرسول الأعظم Al Zahraa Hospital - UMC
حارة حريك	مستشفى بهمن Al Rassoul Al Aazam Hospital Bahman Hospital
حارة حريك	مختبر ناتيونال دياغنوستك سرفيس كومباني National Diagnostic Services Company (NDSC)
الدرجة	مختبر الدكتور محمود عثمان - مركز التحاليل الطبية Medical Diagnostic Center
الجناب	مختبر أميريكين دياغنوستك سنتر American Diagnostic Center (ADC)
بعنا	مستشفى جبل لبنان Mount Lebanon Hospital
بعنا	مستشفى السان جورج الحدث Hôpital Saint-George - Hadath
بعنا	مختبر الهادي Al Hadi Laboratory
بعنا	مختبر INOVIE-Liban

Hôpital du Sacré- Coeur	مستشفى قلب يسوع	الحازمية
Clinigene	مختبر كلينيجان	الحازمية
Hôpital Dr.Samir Serhal	مستشفى سرحال	المن
Transmedical for Life	مختبر ترانسميديكال فور ليف	المن
Haroun Hospital	مستشفى هارون	الزلفا
Bellevue Medical Center (BMC)	مستشفى بلغو	المنصورة
Hôpital Albert Haykal	مستشفى هيكل	الكورة
Centre Hospitalier du Nord (CHN)	مركز الشمال الإستشفائي	زغرتا
Mazloum Hospital	مستشفى المظلوم	طرابلس
Al Mounla Hospital	مستشفى المنلا	طرابلس
Nini Hospital	مستشفى النبي	طرابلس
LMSE - المعهد العالي للدكتوراه، الجامعة اللبنانية	مختبر ميكروبيولوجيا الصحة والبيئة	طرابلس
CHU - Notre-Dame des Secours	مستشفى سيدة المعونات الجامعي	جبل
Lab Akiki & Boulos	مختبر عقريقي وبولس	جبل
Centre Médical Wakim	مختبر واكيم	جونية
Ain Wazein Hospital	مستشفى عين وزين	الشوف
Hammoud Hospital UMC	مستشفى حمود الجامعي	صيدا
Al Karim Medical Laboratory (KML)	مختبر الكريم	صيدا
Sheikh Ragheb Harb Hospital	مستشفى الشيخ راجب حرب	البيشة
Sabbah Diagnostic Center (SDC)	مختبر السباح	البيشة
Jabal Amel Hospital	مستشفى جبل عامل	صور
Mashrek Diagnostic Center (MDC)	مختبر المشرق	صور
Dar Al Amal University Hospital	مستشفى دار الأمل الجامعي	بعلبك
Khoury General Hospital	مستشفى خوري	زحلة
Medical Care Center (MCC)	مختبر ميديكال كير سنتر	زحلة

مختبرات المستشفيات العسكرية

Hôpital Militaire Central	المستشفى العسكري المركزي في بيروت	بيروت
---------------------------	-----------------------------------	-------

المختبرات المؤهلة لأخذ عينات "المسحات الأنفية" بطريقة Drive- thru

Medical Diagnostic Treatment Center (MDTC)	مختبر ميديكال دياغنونمنتيك تريتمانت سنتر (الحمراء)	بيروت
MedLab SAL CIC ALS	مختبر ميد لاب (الحمراء - الجفجفون)	بيروت
Itani Medical Laboratories	مختبرات عيتاني (المزرعة)	بيروت
ABC Laboratories	مختبر أ ب سي	الأشرفية
Mouawad Medical Laboratory	مختبرات معوض الطبية	التياح
Rihan Medical Center	مختبرات الشياح (د. فؤاد ریحان)	التياح
Expert Lab	مختبر إكسبرت لاب	المنصورة
Life LAB	مختبر لايف لاب	بعلبك
Riyak Hospital	مستشفى الرياق	رياق