



# Lebanon National Operations Room Daily Report on COVID-19

Friday, October 23, 2020

Report #219

Time Published: 10:30 PM

New in the report:

- Names of laboratories that do not comply with the procedures followed in recording the information about the patients (place of residence, or phone number), which increases the total number of cases under investigation.
- Ministry of Interior and Municipalities Decision No. 1334 of 10/23/2020 regarding the amendment of Resolution 1258 of 10/18/2020 to close some villages and towns due to the high number of Coronavirus infections in them.
- Ministry of Education and Higher Education Decision No. 498 / M / 2020 related to amending the start date of kindergarten teaching for the 2020 academic year.

<b>1,534</b> New Cases		<b>68,479</b> Total Cases since 21.2.2020		<b>559</b> Total Deaths		<b>32,412</b> Total Recovered		
1,460 Residents	74 Expats	66,373 Residents	2,106 Expats	7 New Deaths		1,020 New Recovered		
83 Deleted Status due to its recurrence	1,324 Total Cases in the Health Sector		35,508 Total Active Cases		685 Hospitalized Cases		242 Total Cases in ICU	
	4 New Cases in the Health Sector		34,823 Cases in Home Isolation		443 Mild Cases		1 New Cases in ICU	
1,072,959 COVID-19 Tests since 21.2.2020		Lebanon Status compared to the World						
1,100 COVID-19 Tests at Airport within 24 hrs.		12,966 COVID-19 tests for residents within 24 hrs.		Total Cumulative	68,479	42,269,355		
				Total Deaths	559	1,146,184		
				Deaths percentage	0,81%	2.71%		
				Total recoveries	32,412	31,329,784		

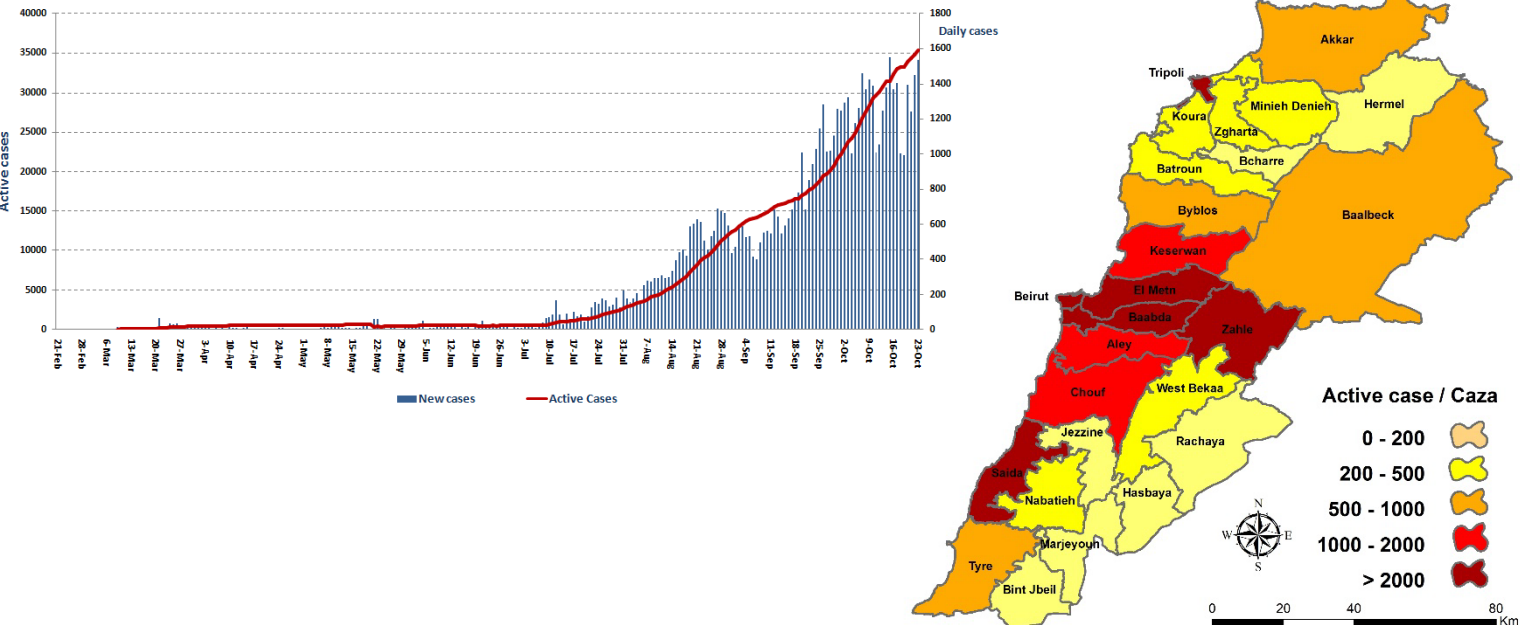
Ref: Ministry of Public Health Data

## Number of Cases by Location

- 12,370 case is Under investigation



إدارة المراكز الصحية العامة  
Ministry of Public Health



Beirut	78
Ras Beirut	1
Manara	2
Raouche	3
Hamra	16
Mseitbeh	2
Mar Elias	2
Unesco	1
Tallet Al Khayat	1
Dar Al Fatwa	1
Sanayeh	3
Mazraa	3
Borj Abi Haidar	3
Tariq Jdeedeh	10
Horoch	1
Ras Al Nabaa	2
Patriarchiate	2
Marfaa	1
Ashrafieh	12
Others	12
<b>Baabda</b>	<b>65</b>
Chiah	11
Jnah	1
Ouzai	1
Bir Hassan	2
Ghobeiry	3
Haret Hreik	8
Lailaky	2
Borj Al Brajneeh	7
Mreijeh	1
Tahweetet Ghadir	1
Baabda	1
Haret Al Mjadleh	1
Brazilia	1
Hazmieh	4
Hadat	11
Jumhour	1
Shahrour Al Olya	1
Ras Al Metn	2
Jumhour (Araya)	1
Hasbayya	1
Qernayel	1
Kfarselwan	1
Others	2
<b>Tripoli</b>	<b>34</b>
Jesrien	1
Qebbeh	2
Zahrieh	1
Mina 1	2
Beddawy	1
Others	27
<b>Koura</b>	<b>2</b>
Bkaftteen	1
Others	1

Chouf	34
Damour	2
Saadiyat	1
Naameh	5
Chhim	3
Dalhoun	2
Daraya	1
Ketermaya	1
Barja	4
Jiyyeh	2
Deir Al Qamar	1
Semqaniyyeh	2
Kfarfaqoud	1
Dmit	1
Warhaniyeh	1
Baaqleen	2
Baqaata	1
Niha	1
Ammatour	1
Maaser Al Chouf	1
Barouk	1
Others	4
<b>Zghorta</b>	<b>17</b>
Zghorta	5
Qarabash	1
Kfarhata	1
Erdeh	2
Majdlayya	1
Aqbeh	1
Karam Saddeh	2
Ehden	1
Ashash	2
Others	1
<b>Zahle</b>	<b>21</b>
Hoch Al Oumara	2
Mar Elias	2
Forzol	1
Ksara	1
Chtoura	1
Taalabaya	1
Qab Elias	2
Bar Elias	1
Majdel Anjar	1
Riyak	6
Terbol	1
Kfarzabad	2
Menyeh Duniyyeh	7
Menyeh	3
Beit Al Faqs	2
Bakh'oun	1
Others	1
<b>Marjyoun</b>	<b>5</b>
Kfarkila	4
Blida	1
Others	1

Kesrwen	58
Sarba	2
Kaslik	2
Zouk Michael	5
Ghadir	1
Zouk Mosbeh	4
Haret Sakher	2
Adma & Dafneh	1
Bouar	1
Oqeibeh	1
Ajaltoun	3
Ballouneh	3
Jeita	3
Ghazir	1
Ghosta	1
Ghodras	2
Qlei'aat	2
Ashkout	2
Feitroun	1
Kfardebien	1
Bqaatouta	1
Ehmeij	1
Others	18
<b>Byblos</b>	<b>32</b>
Byblos	2
Mastita	2
Amshit	1
Halat	1
Fidar	1
Ehmij	1
Shekhnaya	1
Hsoun	1
Shamat	1
Aqoura	1
Tartej	1
Others	20
<b>Aley</b>	<b>36</b>
Al Amrousieh	3
Hay Al Sillom	5
Khaldeh	3
Al Oumara	3
Aramoun	6
Bshamoun	2
Dfoun	1
Ein Anoub	2
Aley	4
Kahale	3
Sharoun	1
Maasreity	1
Ein Dara	1
Others	1
<b>Batroun</b>	<b>6</b>
Shekka	3
Others	3
<b>Jezzine</b>	<b>1</b>
Aishieh	1

Matn	146
Borj Hammoud	7
Sin El Fil	4
Jdeidet El Metn	6
Bouchrieh	4
Dora	4
Rawda	6
Sed El Bouchrieh	4
Sabtieh	4
Dekwene	11
Antelias	3
Jal El Dib	2
Naqqash	8
Zalqa	7
Byaqout	1
Dbayyeh	2
Mazrt Der Aoukr	2
Mansourieh	3
Fanar	4
Ein Saadeh	2
Roumieh	4
Bqannaya	1
Bsalim	5
Nabayh	1
Mteileb	2
Rabieh	3
Qornet Chehwan	1
Rabwe	2
Beit Al Chaar	3
Deek Al Mahdy	2
Mazraet Yashouh	2
Zikrit	2
Bekfayya	2
Beit Shabab	2
Al Kharroubeh	1
Broummana	4
Rweiseh	1
Baabdat	1
Khenshara	2
Aintoura	1
Dhour Al Shweir	1
Baskinta	3
Others	16
<b>Byblos</b>	<b>32</b>
Byblos	2
Mastita	2
Amshit	1
Halat	1
Fidar	1
Ehmij	1
Shekhnaya	1
Hsoun	1
Shamat	1
Aqoura	1
Tartej	1
Others	20

Akkar	10
Halba	2
Abboudieh	1
Abdeh	1
Houeish	1
Fneidek	1
Beereh	1
Wady Khaled	1
Abdeen	2
<b>Western Beqaa</b>	<b>4</b>
Meidoun	1
Hoch Al Hareemeh	1
Al Marj	1
Others	1
<b>Rashaya</b>	<b>2</b>
Eiha	2
<b>Bcharrieh</b>	<b>1</b>
Aabdeen	1

Baalbek	52
Baalbek	7
Doures	1
laat	2
Maqneh	1
Kfardan	1
Arsal	7
Labweh	1
Shaeth	1
Younin	1
Temnine Al Fawka	2
Temnine Al Tahta	2
Ser'een Al Tahta	1
Hezzine	1
Brital	3
Bouday	1
Alak El Tal	1
Others	19
<b>Hasbaya</b>	<b>3</b>
Hasbaya	2
Shebaa	1

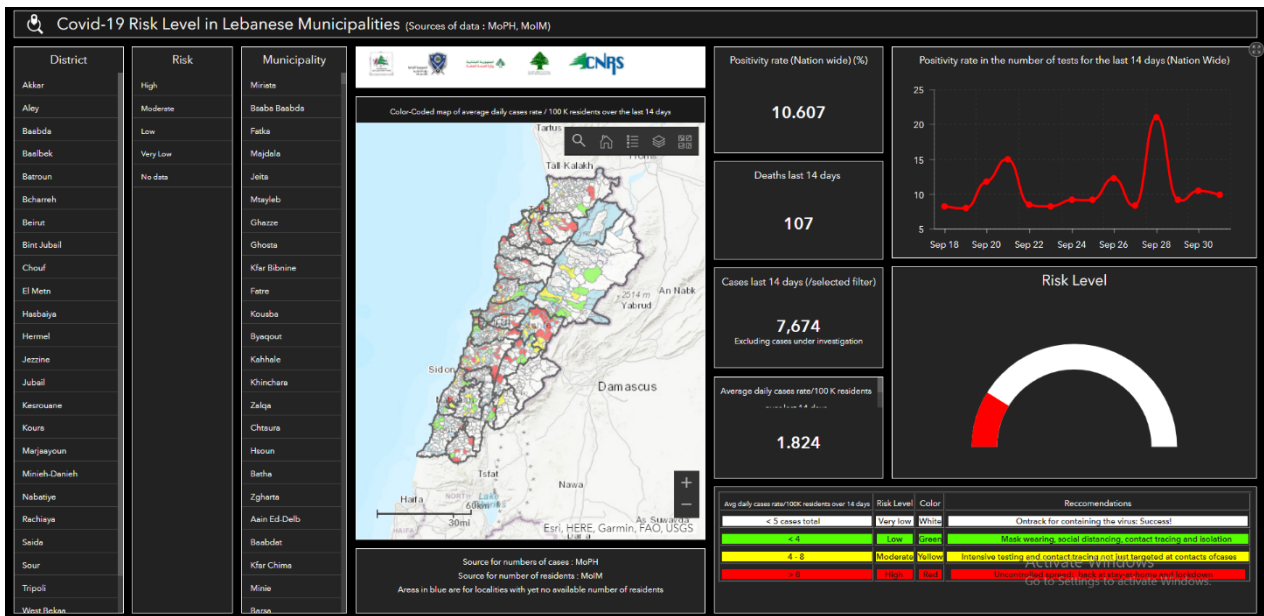
Tyre	83
Old Saida	6
Bramieh	1
Hlalieh	3
Qaya'a	1
Haret Saida	3
Miyeh W Miyyeh	1
Ein El Helwe	7
Majdlyoun	1
Abra	4
Ein El Delb	1
Ghazieh	11
Zita	1
Khrayeb	1
Bablieh	1
Khartoum	1
Ghassanieh	1
Sarafand	1
bisarieh	2
Saksakieh	1
Najjarieh	1
Anqoun	5
Others	29

Bnt Jbeil	14
Jmeijmeh	2
Bar'ashit	1
Harees	2
Deir Ntar	5
Yater	1
Debel	2
Beit Leef	1
<b>Nabatieh</b>	<b>25</b>
Mazraet Kfar Joz	2
Jbaa	3
Roumine	1
Deir Al Zahrany	1
Harouf	1
Jebshit	2
Ansar	3
Qseibeh	3
Qaaqa'iet Al Jesr	1
Yuhmor	1
Others	7

<b>Others</b>	<b>741</b>
---------------	------------

\*741 Cases under verification due to the failure of a number of laboratories to provide the Ministry of Public Health with information about housing or the phone number of infected cases.

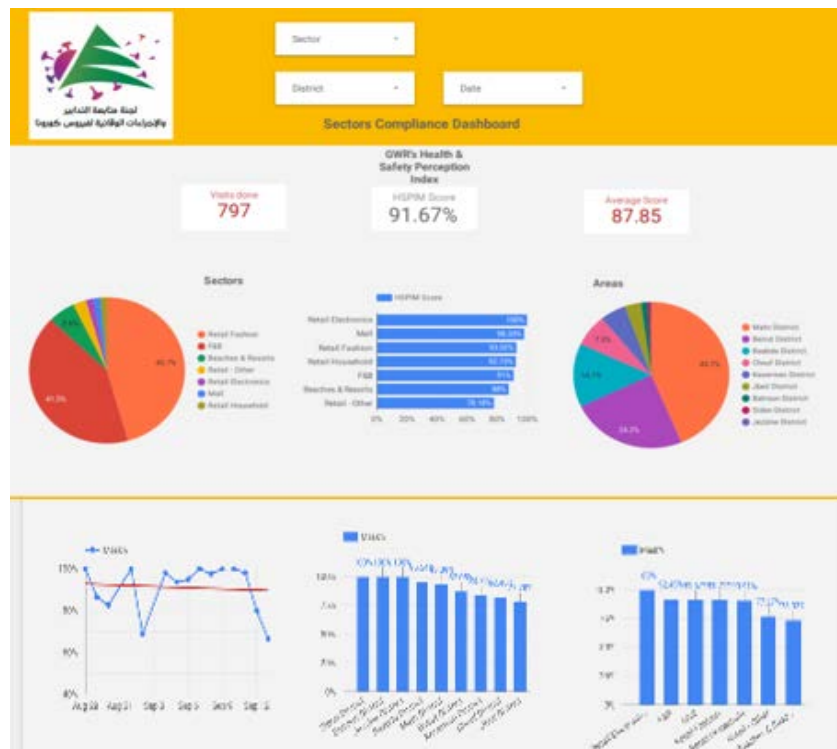
## The Online platform to measure the level of risk of the spread of the new Corona virus



This interactive platform allows you to know the level of risk of spreading the kurna virus according to districts, based on the number of cases registered daily and the number of residents in each district. For more information on a daily basis, you can access the following link:

<https://bit.ly/DRM-RiskLevelInMunicipalities>

## Online platform to track sector commitment in general mobilization procedures

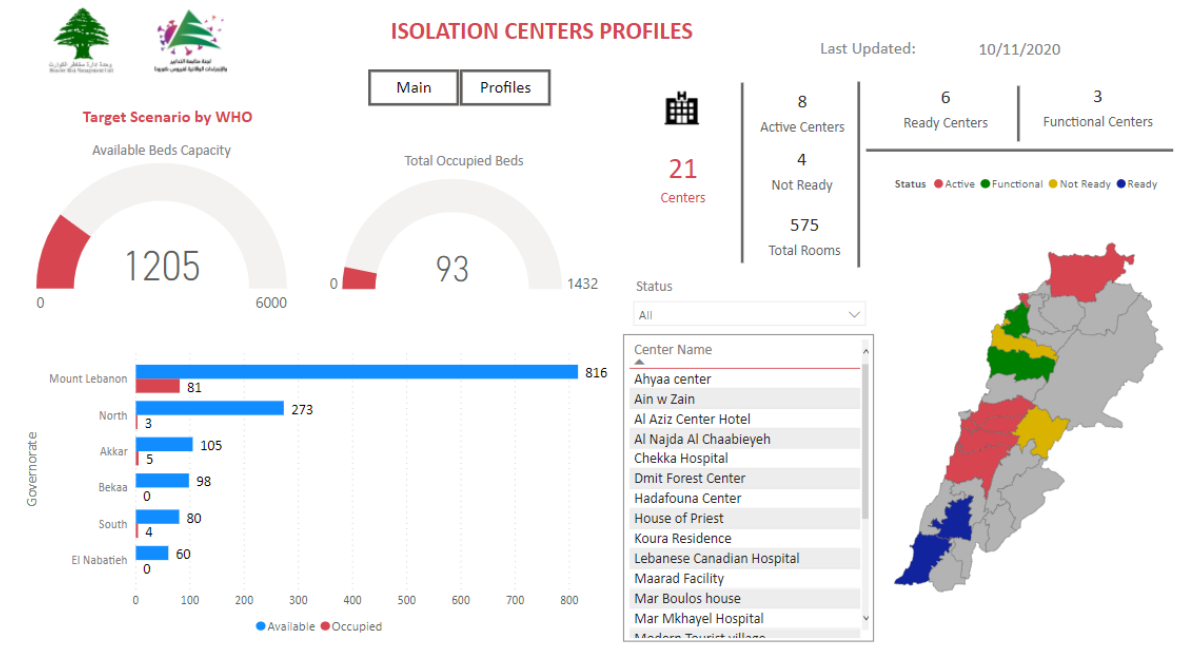


Based on the recommendation issued by the National Committee for Follow-up of Preventive Measures and Measures to Confront the Coronavirus to open all sectors, provided that the general mobilization procedure (safe distance, muzzle, and hand sterilization) be applied, a special electronic platform was created that allows monitoring and measuring the percentage of commitment by various sectors on an ongoing basis.

The detailed results can be viewed directly at the following link:

<http://bit.ly/covidsectordata>

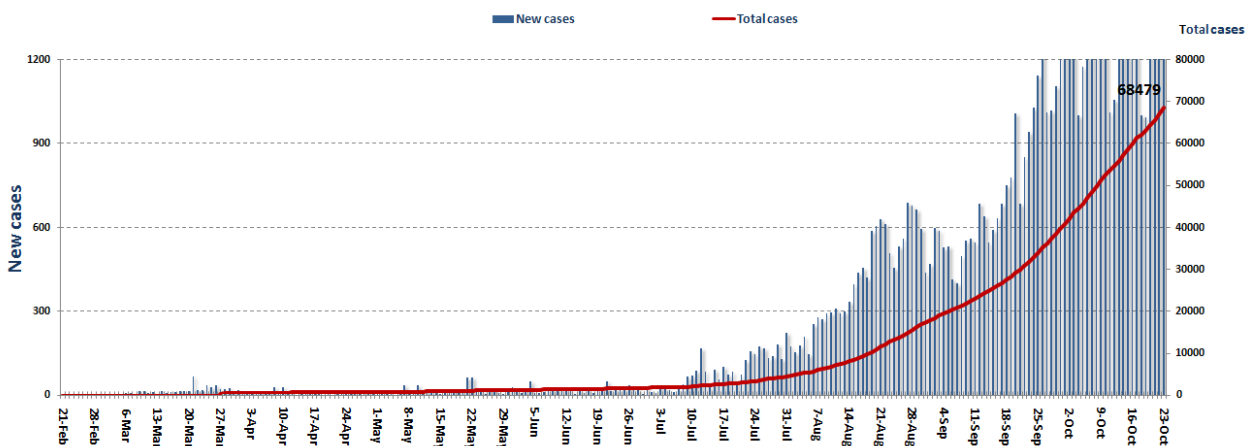
## Occupancy rate of isolation centers for cases infected with Coronavirus



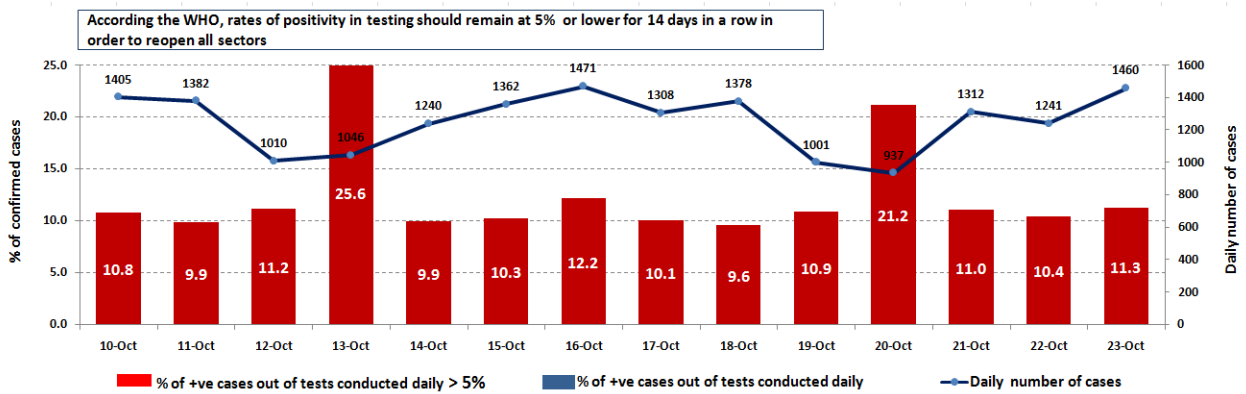
For more information about the isolation centers' distribution and the percentage of their occupancy, enter the following link: <http://bit.ly/DRM-IsolationCentersProfiles>

Note: These centers have been equipped in cooperation between the National Committee for Follow-up of Preventive Measures and Measures to Confront the Coronavirus and Governors and Municipalities, the United Nations Development Program, the World Health Organization, UNICEF, the Ministry of Public Health, the Syndicate of Nurses in Lebanon and the Syndicate of Specialists in Social Work.

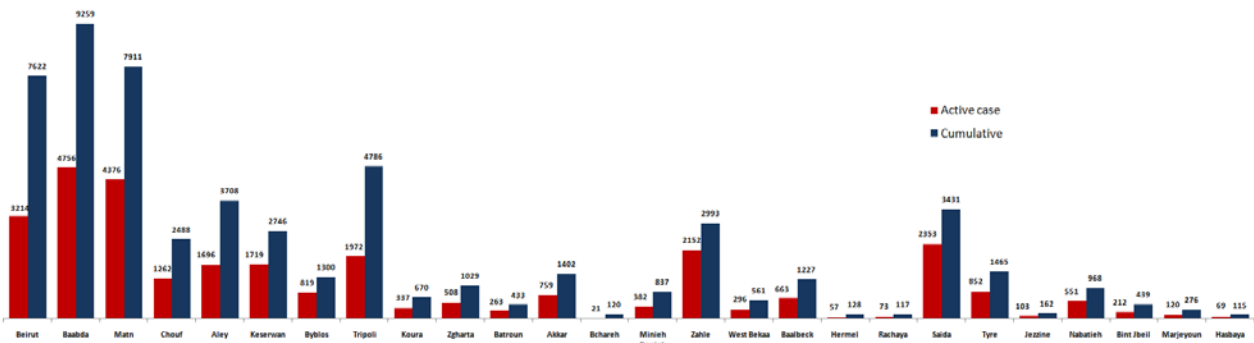
## Cases per day



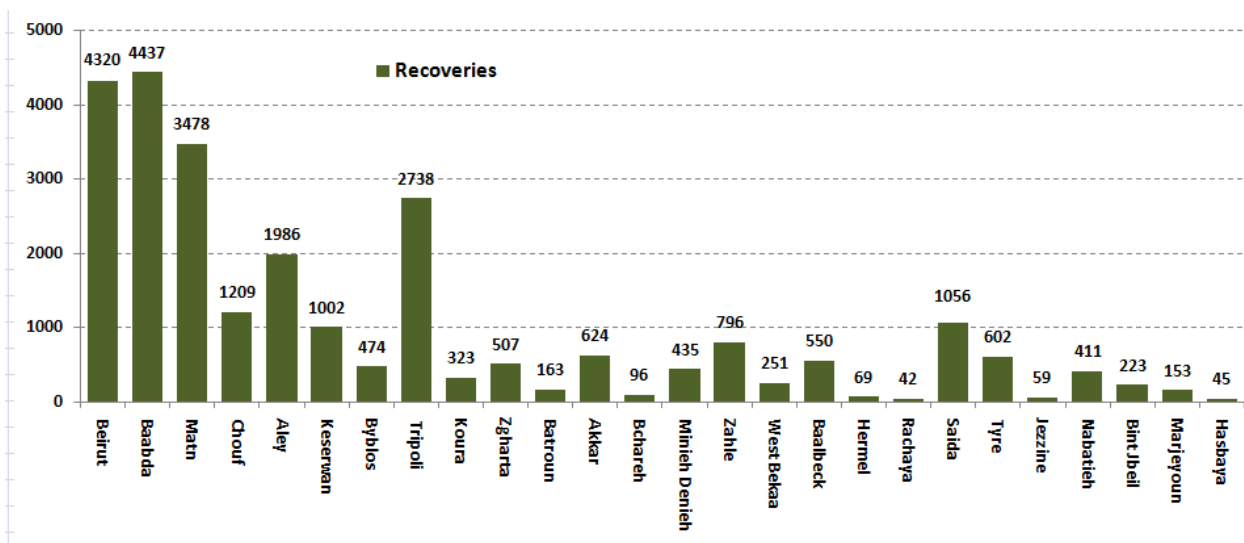
## The percentage of positive cases out of the number of daily checks (10-23 Oct 2020)



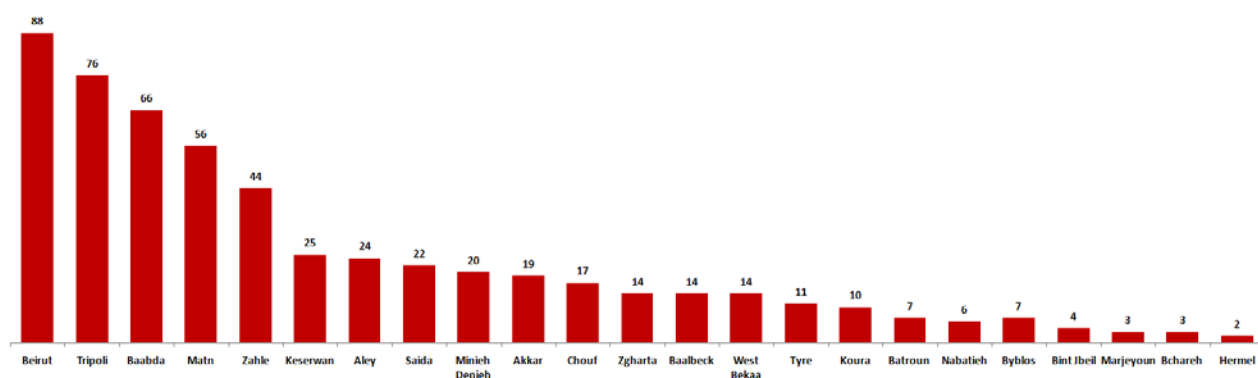
## Distribution of Active Cases by Districts



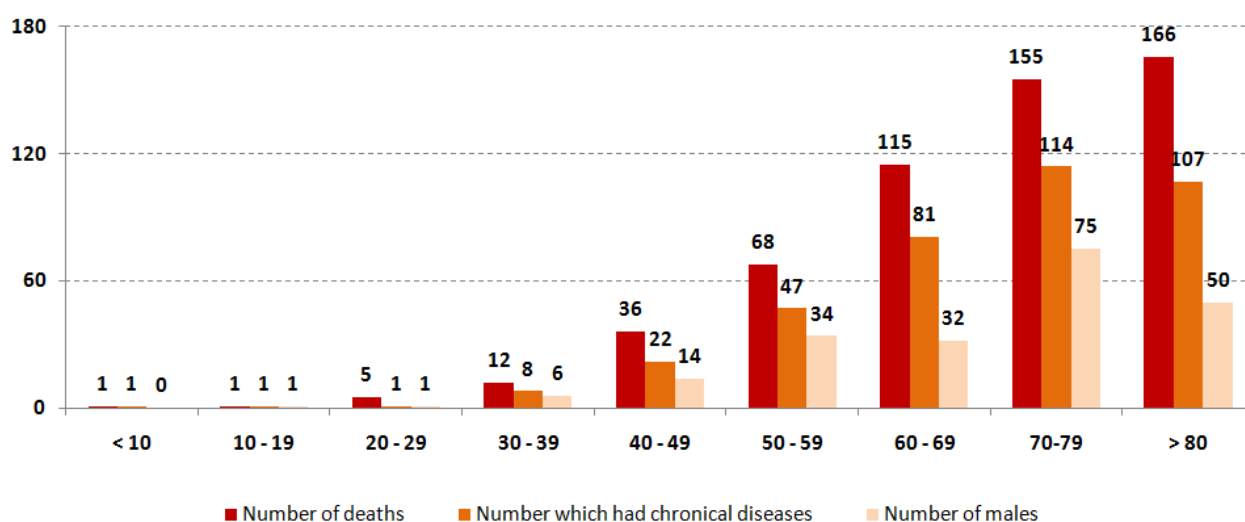
## Recoveries



## Distribution of deaths by Governorates



## Distribution of deaths by Age

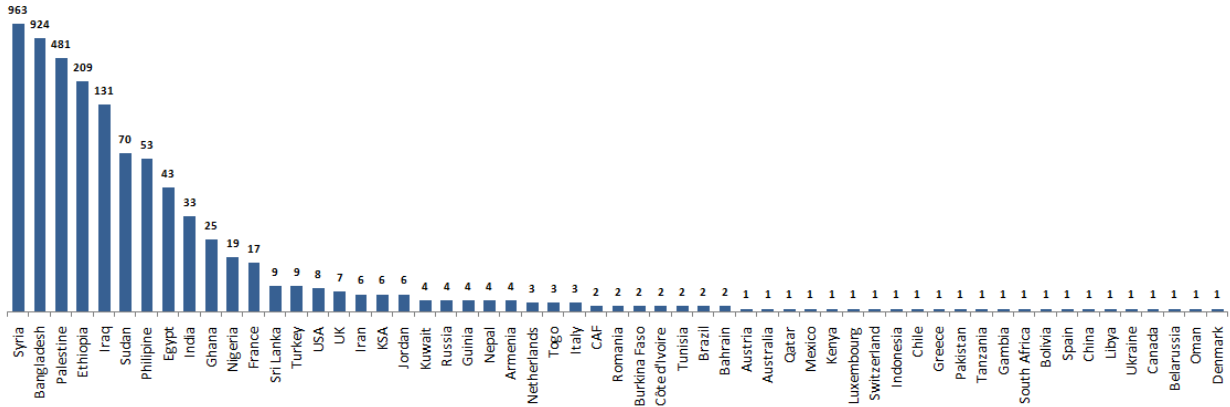


## The distribution of the recorded deaths during the past 24 hours

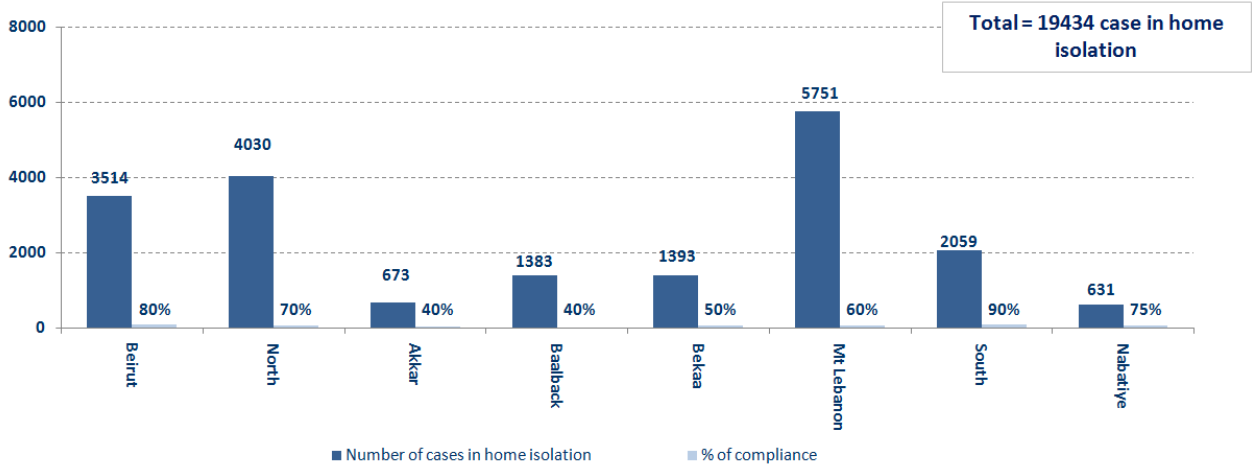
Hospital	Residence	Gender	Age	Chronic
Rizk Hospital	Maten	Male	1967	Yes
Saint George	Aleyh	Male	1949	Yes
Saint Charle	Aleyh	Male	1961	Yes
El NiNi	Tripoli	Male	1951	Yes
Elias Herawi	Zahleh	Female	1938	No
Riyak	Rachaya	Female	1948	Yes
Baalbeck Gov	Baalbeck	Female	1928	Yes

## Distribution of cases by nationality

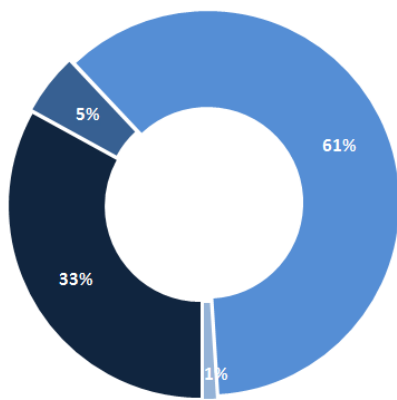
Lebanese : 61417 cases out of 68479 (88%)



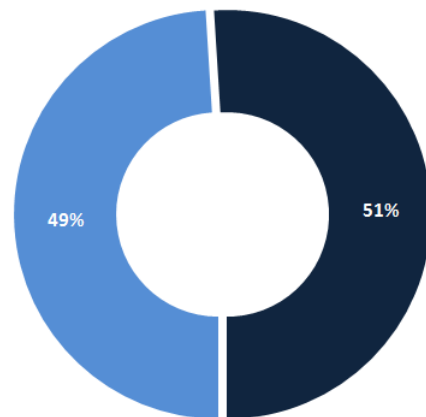
## Number of individuals in home isolation and percentage of commitment to isolation



## Exposure



## Distribution according to gender



■ Contact with confirmed case ■ Travel related ■ Under investigation ■ Unidentified source

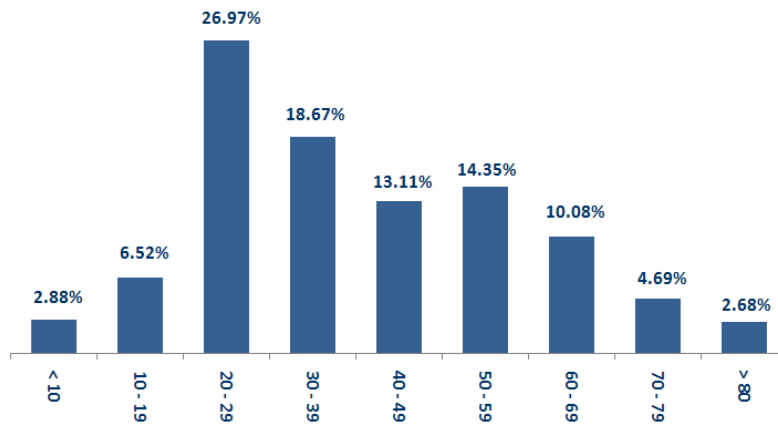
■ Female ■ Male



---

### Distribution by age

---




---

### Decisions and actions taken – 10/23/2020

---



---

#### Ministry of Public Health

---

- The Ministry of Public Health reported that PCR tests had been completed for flights that arrived in Beirut and were conducted at the airport on both 10/17/2020 and 10/19/2020, where twenty-six (26) positive cases were recorded, distributed over the following flights:

Arriving from	Company	Flight Number	Number of Positive Cases
10/17/2020			
Erbil	MEA	325	1
Cairo	Egypt Airways	711	3
10/19/2020			
Doha	Qatar Airways	416	1
Sharqah	G9	385	2
Istanbul	MEA	266	10
Al Najaf	Iraqi Airways	139	6
Milano	MEA	236	1
Cairo	MEA	307	1
Baghdad	Iraqi Airways	131	1
<b>Total</b>			<b>26</b>

---

**Lebanese Red Cross**

---

235,498	Number of PCR tests transferred to laboratories	52,162 (858 New)	Number of additional ambulance centers ready to respond	48	ambulance centers	6,840 (65 New)	cases transferred to hospitals
166	Number of volunteers trained to transfer PCR tests	1,498	Number of trained paramedics	8,772	total number of respondents	90,124 (1,435 New)	number of those benefiting from awareness *sessions
967	The number of university volunteers trained to follow up on prevention measures in companies and institutions	291	Number of university volunteers trained to conduct awareness sessions	550	total LRC volunteers for covid19	8,658 (12 New)	number of trained managers for isolation centers
4,347 (6 New)	Number of beneficiaries from educational electronic platforms COVID-19	259,626 (738 New)	Number of distributed equipment	1,246,602	total distriibuted posters, brochures, and flyers on covid19 prevention	569 (8 New)	number of rpisons that have been disinfected

## General Directorate of Internal Security Forces

The number of seizure records during the past 24 hours					The total number of records since 03/08/2020	
Written records of violating institutions (absorptive capacity and preventive measures)					0	
Written records of persons violating the decision to wear a mask					0	
Written records of people violating the general mobilization decision (Aragil* and social distancing)					396	
<b>Total</b>					<b>396</b>	
					Beirut	21,189
					Mount Leb	20,245
					Beqaa	8,653
					North	7,488
					South	7,686
Beirut	Mount Leb	Beqaa	North	South	<b>Total</b>	<b>65,261</b>
109	128	60	38	61		

## General Directorate of State Security

- Reporting that 3 state security personnel were infected with the Coronavirus, and were quarantined at their homes.
- 77 The total number of injuries was reported in the General Directorate of State Security.

Beirut	South	North	Akkar	Beqaa	Nabateih	Baalbek Hermel	Mount Leb
50%	48%	43%	40%	66%	58%	N/A	45%

## General Directorate of General Security

- Reporting the death of 3 people from Rashkanania / Hrima Monsters / West Bekaa and Aqaba / Rashaya due to Corona virus.
- The report that a member of the Lebanese army was infected with the Coronavirus.
- Reporting the commitment of the municipalities to the decision of the Minister of Interior and Municipalities:

Municipalities that abided by the decision	Municipalities didn't abide by the decision
Kobayat, Al Majdal, Ain Kafr Zabad, Taalabaya, Ablah, Jdita, Bareges	Al-Manara, Al-Rawda, Al-Suwairi, Al-Majdal, Al-Aboudieh, Majdala, Al-Khraibeh, Baakline, Jdeidet Al-Shouf, Ain Zahla, Al-Barouk, Al-Warhaniya, Kafr Nabrah, Arab Salem

- Follow up the implementation of the required security and preventive measures at the airport, ports and border crossings.
- Reporting cases registered in the various districts and cases in home quarantine.

---

## Ministry of Public Works and Transportation

---

Departing Flights		Arriving Flights	
Number of Flights	49	Number of Flights	47
Number of Departing Individuals	5,153	Number of Arrivals	4,070

Port	Entered			Left		
	Import	Direction	#	Export	Direction	#
Beirut				Containers	Port Said	1
				Containers	Izmir	1
Tripoli				Blank	Greece	1
				Blank	Ukraine	1
Saida	Metals	Alexandrun	1			
<b>Total</b>			<b>1</b>			<b>4</b>

---

### General announcements

---

- The Ministry of Interior and Municipalities issued Decision No. 1334 on 10/23/2020 to amend Resolution No. 1258 related to the continued closure of some villages and towns due to the high number of corona infections in them, based on the recommendations of the small committee of the Committee for Follow-up of Measures and Preventive Measures of Coronavirus.

The main highlights of the decision: Deletion of the following villages and towns from the schedule of Total Closure Resolution No. 1258 of 10/10/2020:

- Adeh - Kesrouan District
- Ajaltoun - Kesrouan District
- Faytroun - Kesrouan District
- Zouk Mosbeh - Keserwan District
- Ghazir - Kesrouan District
- Ghosta - Kesrouan District
- Rayfoun - Kesrouan District
- Ain Alaq - Matn District
- Broumana - Matn District
- Jal el Dib / Bkinaya - Matn District
- Sin El Fil - Matn District
- Baabda / Louaizeh - Baabda District
- Batloun - Chouf District
- Al Rawda - West Bekaa District
- Qaqai`a Al Jisr - Nabatiyeh District

- The Ministry of Education and Higher Education issued Decision No. 498 / M / 2020 on 10/23/2020, which provides for the amendment of Decision No. 463 / M / 2020 on 10/9/2020 so that teaching begins in kindergartens in kindergartens and schools in formal education For the academic year 2020-2021, on Mondays 11/2/2020 instead of Mondays 10/26/2020.

- The Governor of Mount Lebanon issued Decree No. 353/2020 on 10/23/2020 regarding the extension of the emergency measures decision related to limiting the spread of the Corona virus in the town of Bayssour - Aley District, and the most prominent of what was mentioned in it:

- Extending the implementation of Resolution No. 347/2020 dated 10/15/2020 in the town of Bayssour for an additional week from its date, in addition to activating and implementing the measures and procedures imposed by the aforementioned decision during the extension period
- Assigning security forces and municipal police to strictly enforce this decision, and to organize minutes against violators in accordance with the rules
- Assigning the Internal Security Forces to coordinate with the municipality of Bayssour to implement the content of this decision

**Note: The decisions can be found at [www.drm.pcm.gov.lb](http://www.drm.pcm.gov.lb)**

---

## Examples of lack of adherence to safety measures

---

Failure of some municipalities to abide by the Ministry of Interior and Municipalities Decision No. 1025/2020 related to the closure of towns that have a high risk of the spread of the epidemic.

- Demand gatherings and demonstrations.
- Failure to comply with the preventive measures and procedures required in several stores and markets (putting on a muzzle or face mask, sterilizing hands, maintaining a safe distance).
- Non-compliance with the 50% occupancy rate in several restaurants and amusement game centers.
- Gatherings for social events.
- Failure of those in contact with confirmed cases to adhere to home isolation procedures until the results of the laboratory tests are issued.

**If you feel any symptoms, call directly the hotline of the Ministry of Public Health: 1214 or 01/594459**

### Names of laboratories that do not adhere to the procedures approved by the Ministry of Public Health About the information required to be recorded for infected cases

Laboratory/Hospitals	Number of positive cases without a phone number	Number of positive cases without specifying the place of residence
Bahman Hospital	33	33
Rassol Aazam Hospital	7	7
Mar Youssef Hospital	16	16
Saint George Hospital	7	7
Mount Lebanon Hospital	81	83
INOVIE Laboratory	22	58
ADS Laboratory	7	7
Rafik Hariri International Airport Laboratory	6	16
Baalbek Gov Hospital	33	41
DAR Al Amar Hospital	25	25
Army Hospital	119	119
AUBMC	55	55
Saint George – Achrafeih	-	11
Haykal Hospital	20	20
Waakem Hospital	21	21
Abu Jawdeh Hospital	46	47
Haroun Hospital	18	18
Serhal Hospital	30	30
Al Mazloum Hospital	36	36
Al Nini Hospital	-	10
Al Esteshfaa Center - North	13	13

## A list of the laboratories accredited by the MoPH to conduct PCR tests

### المختبرات الحكومية المؤهلة إجراء التشخيص المخبري لفيروس كورونا بطريقة الـ RT-PCR

المختبر	الموقع
مستشفى رفيق الحريري الجامعي RHUH	بيروت
مستشفى حيا حكومي	حيا
مستشفى طرابلس الحكومي	طرابلس
مستشفى البترون الحكومي	البترون
مستشفى قنوح كسروان الحكومي (البوار)	كسروان
مستشفى نبيه يزّي الحكومي الجامعي	البلدنة
مستشفى تينين الحكومي	تينين
مستشفى بنت جبيل الحكومي	بنت جبيل
مستشفى بعلبك الحكومي	بعلبك
مستشفى الرئيس الياض الهراوي الحكومي	زحلة

### مختبرات المستشفيات العسكرية

Hôpital Militaire Central	المستشفى العسكري المركزي في بيروت	بيروت
---------------------------	-----------------------------------	-------

### المختبرات المؤهلة لأخذ عينات "المسحات الأنفية" بطريقة Drive- thru

مختبر ميديكال دياغنوستيك تريتمانت سنتر (الحمراء)	بيروت
Medical Diagnostic Treatment Center (MDTC)	بيروت
مختبر ميد لاب MedLab SAL CIC ALS (الحمراء - الجبلينور)	بيروت
مختبرات عياني Itani Medical Laboratories (المرعة)	بيروت
مختبر أ ب سي ABC Laboratories	الأشرفية
مختبرات معوض الطبية Mouawad Medical Laboratory	التياح
مختبرات الشياح (د. فواد ربحان) Rihan Medical Center	التياح
مختبر إكسبرت لاب Expert Lab	المنصورة
مختبر لايف لاب Life LAB	بعلبك
مستشفى الرياق Riyak Hospital	رياق

المختبرات الخاصة المؤهلة لإجراء التشخيص المخبري لفيروس كورونا بطريقة الـ RT-PCR

المختبر	الموقع
AUBMC مستشفى الجامعة الأميركية	بيروت
Hotel-Dieu de France (HDF) مستشفى أوتيل ديو الجامعي	بيروت
مختبرات رودولف ميريو (الجامعة اليسوعية – المتحف) Laboratoire Rodolphe Mérieux (Université Saint-Joseph)	بيروت
Saint-George Hospital - UMC مستشفى القديس جارجيوس الجامعي	بيروت
Makassed General Hospital مستشفى المقاصد	بيروت
LAU Medical Center - Rizk Hospital مستشفى رزق الجامعي	بيروت
Hôpital Libanais Geitawi - CHU مستشفى اللبناني الجعيتاوي الجامعي	بيروت
Hôpital Notre-Dame du Rosaire مستشفى الوردية	بيروت
Doctor 's Center مختبر مركز الأطباء	بيروت
Fontana Laboratories مختبر فونتانا (الحمرا)	بيروت
مختبر الأمن العام (العنابية)	بيروت
Laboratoire Jabre-Ghorra مختبرات جبر وغرة	بيروت
Saint Marc Medical & Diagnostic Center مختبر السان مارك	بيروت
Laboratoire Moderne (Modern Lab- Berjaoui) المختبرات الحديثة	الغبيوي
Sahel General Hospital (SGH) مستشفى الساحل	الغبيوي
مستشفى الزهراء الجامعي	الغبيوي
Al Zahraa Hospital - UMC مستشفى الرسول الأعظم	برج الزواجة
مستشفى بهمن	
Al Rassoul Al Aazam Hospital Bahman Hospital	حارة حريك
مختبر ناتيونال دياغنوستك سرفيس كومباني	
National Diagnostic Services Company (NDSC)	حارة حريك
Medical Diagnostic Center مختبر الدكتور محمود عثمان - مركز التحاليل الطبية	للمرجة
American Diagnostic Center (ADC) مختبر أميريك دياغنوستك سنتر	الجناح
Mount Lebanon Hospital مستشفى جبل لبنان	بعنا
Hôpital Saint-George – Hadath مستشفى السان جورج الحدث	بعنا
Al Hadi Laboratory مختبر الهادي	بعنا
INOVIE-Liban مختبر	بعنا

Hôpital du Sacré- Coeur مستشفى قلب يسوع	الحازمية
Clinigene مختبر كلينيجان	الحازمية
Hôpital Dr.Samir Serhal مستشفى سرحال	المتن
Transmedical for Life مختبر ترانس ميدكال فور ليف	المتن
Haroun Hospital مستشفى هارون	الزلفا
Bellevue Medical Center (BMC) مستشفى بلفو	المنصورة
Hôpital Albert Haykal مستشفى هيكال	الكورة
Centre Hospitalier du Nord (CHN) مركز الشمال الإشتغاني	زغرتا
Mazloum Hospital مستشفى المظلوم	طرابلس
Al Mounla Hospital مستشفى الملا	طرابلس
Nini Hospital مستشفى النيني	طرابلس
مختبر ميكروبيولوجيا الصحة والبيئة LMSE - المعهد العالي للدكتوراه، الجامعة اللبنانية	طرابلس
CHU - Notre-Dame des Secours مستشفى سيدة المعونات الجامعي	جبل
Lab Akiki & Boulos مختبر عقيقي وبولس	جبل
Centre Médical Wakim مختبر واكيم	جونية
Ain Wazein Hospital مستشفى عين وزين	الشوف
Hammoud Hospital UMC مستشفى حمود الجامعي	سيدا
Al Karim Medical Laboratory (KML) مختبر الكريم	سيدا
Sheikh Ragheb Harb Hospital مستشفى الشيخ راجب حرب	البيمنة
Sabbah Diagnostic Center (SDC) مختبر الصباح	البيطية
Jabal Amel Hospital مستشفى جبل عامل	صور
Mashrek Diagnostic Center (MDC) مختبر المشرق	صور
Dar Al Amal University Hospital مستشفى دار الأمل الجامعي	بعلبك
Khoury General Hospital مستشفى خوري	زحلة
Medical Care Center (MCC) مختبر ميدكال كير سنتر	زحلة