



Lebanon National Operations Room Daily Report on COVID-19

Tuesday, September 22, 2020

Report #188

Time Published: 10:00 PM

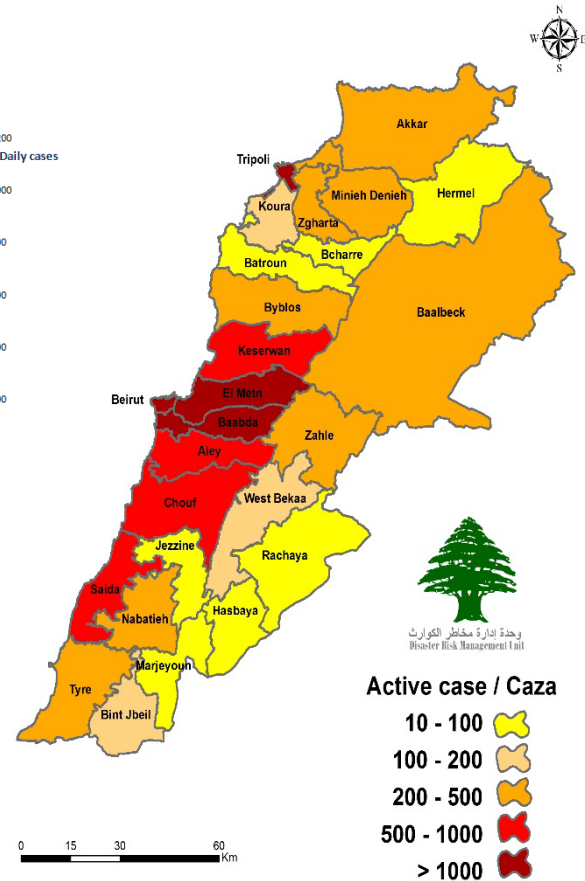
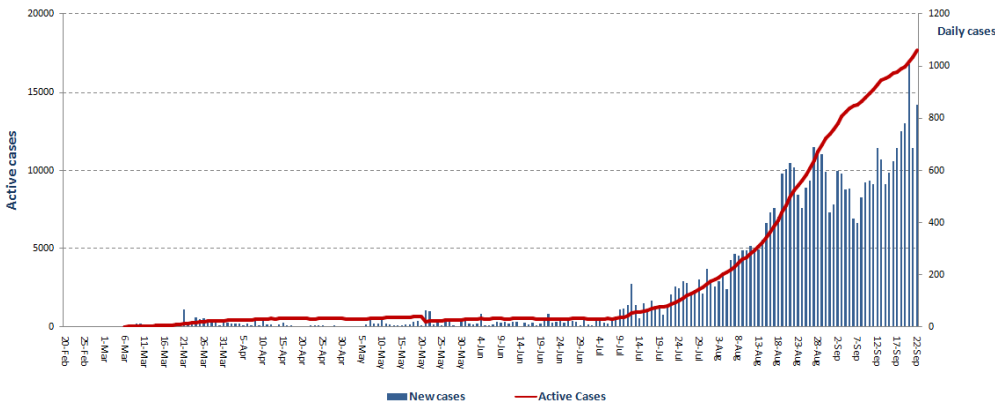
12,878 Total Recoveries	315 Total Death Since 21/2/2020	30,838 Total Cases Since 21/2/2020		851 New Cases	
433 New Recoveries	8 New Deaths	1,587 Expats	29,260 Locals	10 Expats	841 Locals
125 Cumulative in ICU	460 Hospitalized Cases	17,645 Active Cases		874 Medical Staff Cases	
2 New Cases in ICU	335 Mild Cases	17,185 Home Isolation		20 New Cases in Medical Staff	
Lebanon compared to the world				703,992 Conducted PCR Tests Since 21/2/2020	
Registered Cases	30,838	31,629,960		2,001 Expats PCR Tests	
Total Deaths	315	971,800		9,983 Locals PCR Tests	
Percentage of Deaths	1,02%	3,07 %			
Total Recoveries	12,878	23,225,357			

Source : Data Issued by Ministry of Public Health

*The Above data was last updated at 10:00 PM

Number of Cases by Location

- 6,279 case is Under investigation



Beirut	Cases
Ein El Mraysseh	1
Wata El Mseitbeh	1
Hamra	3
Raouche	2
Mseitbeh	3
Mazraa	4
Qoreitem	1
Tariq Jdeedeh	17
Ras El Nabeh	8
Achrafieh	16
Mar Elias	2
Tallet El Khayyat	2
Basta Tahta	1
Sanayeh	1
Zarif	2
Basta El Fawka	2
Borj Abi Haydar	3
Gemmayze	1
Adlieh	2
Others	15
Baabda	Cases
Chiah	11
Ouzai	2
Bir Hassan	5
Forn El Shubbak	1
Kfarshima	1
Ein El Rimmaneh	3
Haret Hreik	17
Laylaki	7
Borj El barajneh	16
Mreijeh	3
Hadat	21
Hazmieh	11
Baabda	1
Tahweetet El Ghadir	3
Yarze	1
Wadi Chahrour El Olya	1
Ghobeiri	3
Bsaba	3
Kobbeih	1
Dleibeh	1
Others	19
Chouf	Cases
Naameh	4
Baasir	1
Barja	5
Jadra	2
Rmeileh	2
Breeh	1
Baaklin	1
Jiyyeh	1
Jahlieh	1
Hassrout	1
Wadi El Zayneh	1
Ein W Zein	2
Khraybe	6
Barouk	1
Others	3
Jezzine	Cases
Kfarjarra	1
Others	1

Matn	Cases
Borj Hammoud	9
Bouchrieh	3
Sin El Fil	5
Jisr El Basha	2
Jal el Deeb	2
Jdeidet El Metn	8
Doura	3
Dekwene	8
Naqqash	5
Antelias	2
Sed El Baouchrieh	3
Zalka	3
Dbayeh	1
Mansouriyeh	7
Deir Ma Roukoz	1
Qornet Chehwan	1
Bqannaya	1
Mkalles	1
Elissar	1
Hemlaya	2
Bekfayya	3
Broummana	2
Ein Saadeh	3
Beit Merry	4
Fanar	3
Bsalim	4
Mtayleb	1
Beit El Chaar	5
Deek el Mahdi	3
Mazraet Yashouh	5
Jouret El Ballout	1
Baabdat	2
Mrouj	1
Khenshara	1
Aintoura	1
Bteghreen	1
Baskinta	1
Others	2
Bint Jbeil	Cases
Baraachit	1
Kfardounin	1
Kouneen	1
Qalawayh	1
Others	79
Akkar	Cases
Halba	1
Hek El Sheikh Taba	1
Fneidek	4
Mashha	1
Kfarhorra	1
Jebrael	1
Kleiaat	2
Hweish	2
Hrar	2
Hmayra	2
Rahbe	1
Ghazeeleh	1
Akroum	1
Others	6
Hermel	Cases
Hermel	1

Aleyh	Cases
EL Amrousiyyeh	1
Mouenseh	2
Bleibel	2
Aley	5
Hay El Sillom	5
Aramoun	19
Aitat	1
Bshamoun	6
Bsateen	2
Khaldeh	4
Qabr Shmoun	1
Sharoun	1
Others	1
Zghorta	Cases
Zghorta	1
Erdeh	1
Majdlayya	3
Alma	1
Ehden	4
Meryata	6
Rasheen	2
Asnoun	1
Aqba	2
mezyara	1
Others	1
Baalbak	Cases
Baalbak	2
Fakha	1
Beit Chama	1
Hoch El Rafqa	5
Temnin El Tahta	1
Nabe Sheeth	3
Jbeil	Cases
Jbeil	1
Qartaboun	2
Amchit	3
Halat	2
Nahr Ibrahim	1
Hsoun	1
Hboub	1
Gharfeen	1
Gharzouz	1
Tripoli	Cases
Qebbeh	3
Mina	20
Zahrieh	1
Tabbaneh	2
Qalamoun	2
Beddawy	10
Others	67
Koura	Cases
Kfaraqqa	1
Bterram	1
Bzeeza	1
Bsarma	2
Reshdbbeen	1
Touratej	3
Anfeh	5
Dahr El Ein	2
Others	3

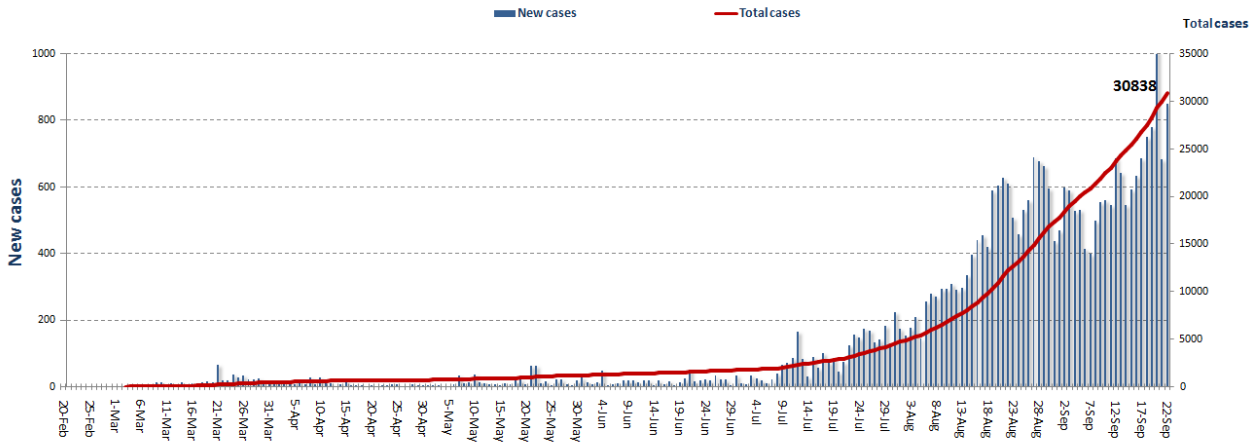
Kesrwen	Cases
Sarba	2
Bouar	1
Kaslik	1
Ghadir	1
Adonis	1
Nahr El Kalb	1
Safra	1
Zouk Mosbeh	3
Baqatet Ashkout	1
Ghazir	1
Kleiaat	1
Ashkout	2
Others	1
Menh Dunyeh	Cases
menyeh	8
Safeera	6
Ezel	2
Beit Hweik	1
Kfar Hebbo	1
Deir Nbouh	1
Others	8
Beqaa Gharby	Cases
Mashghara	2
Ein El teeneh	1
Jb Jennin	2
Ghazzeeh	1
Qaroun	1
Marj	1
Kefraya	2
Sweiry	1
Others	2
Saida	Cases
Saida Kadmech	2
Haret Saida	2
Ein el Helwe	3
Hlalieh	2
Miyeh W Miyh	1
Abra	5
Bqosta	1
Besten el Sheikh	1
Bablieh	2
El Siyyad	1
Anqoun	1
Others	10
Zahle	Cases
Bar Elias	6
El Rassieh	1
Saadnayel	1
Hoch Mous	2
Hoch El Oumara	2
Forzol	3
Maalaaqa	1
Niha	2
Ksara	1
Jdita	1
Kab Elias	3
Riyak	1
Others	11
Batroun	Cases
Batroun	1
Shekka	3

Nabateih	Cases
Roumin	1
Deir El Zahrani	1
Dweir	1
Jebsheet	1
Qaaqaaiyyet El Jisr	1
Others	1

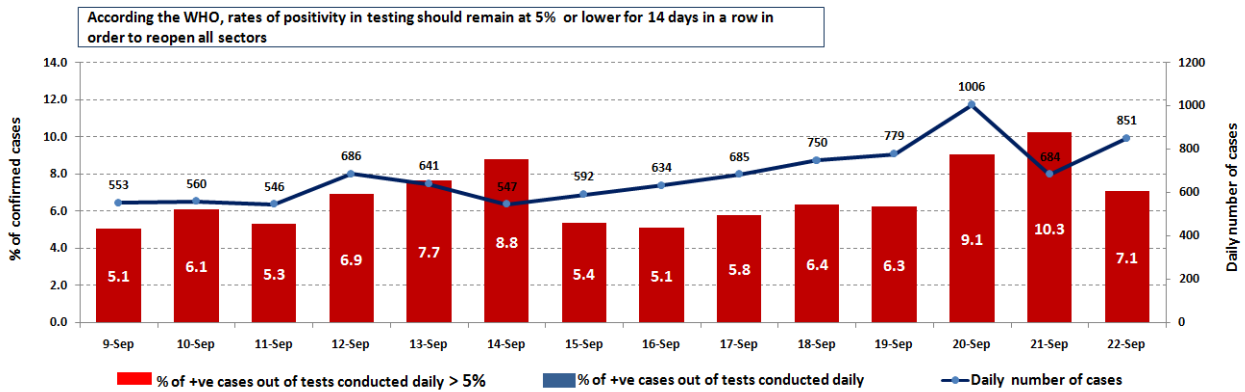
Rashayya	Cases
Kherbet Rouha	1

Marjayoun	Cases
Marjeoyoun	1
Ibl El Saqe	2
Borj El Mulouk	2
Khiyam	1
Mays El Jabal	1
Others	1

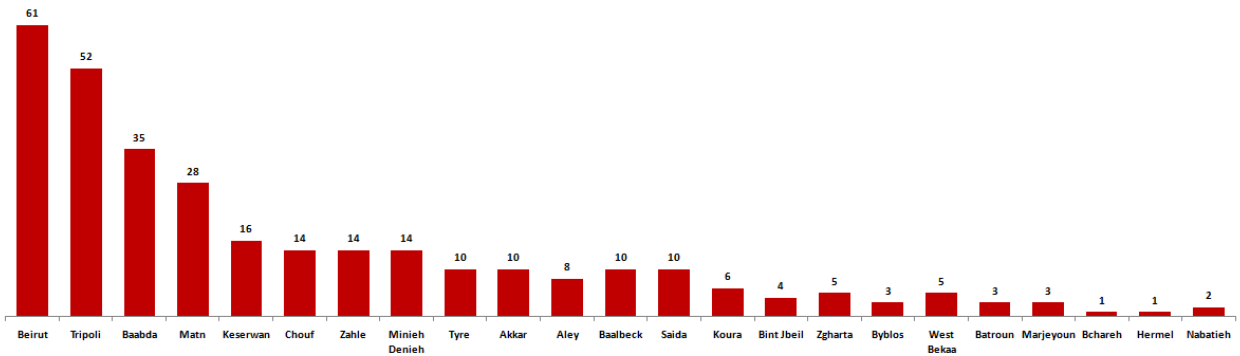
Cases per day



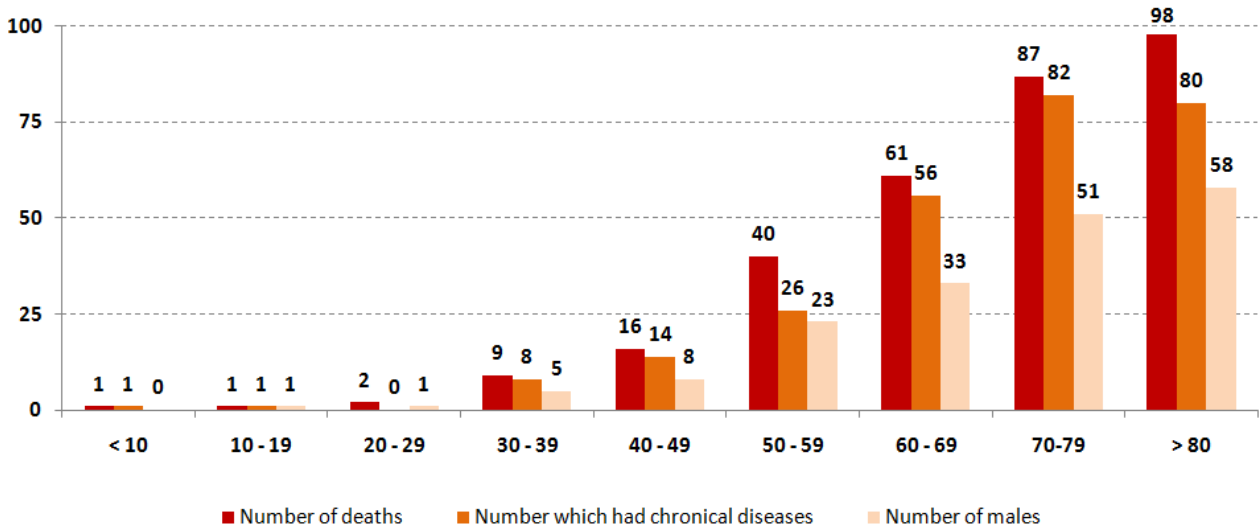
The percentage of positive cases out of the number of daily checks (9 September to 22 September 2020)



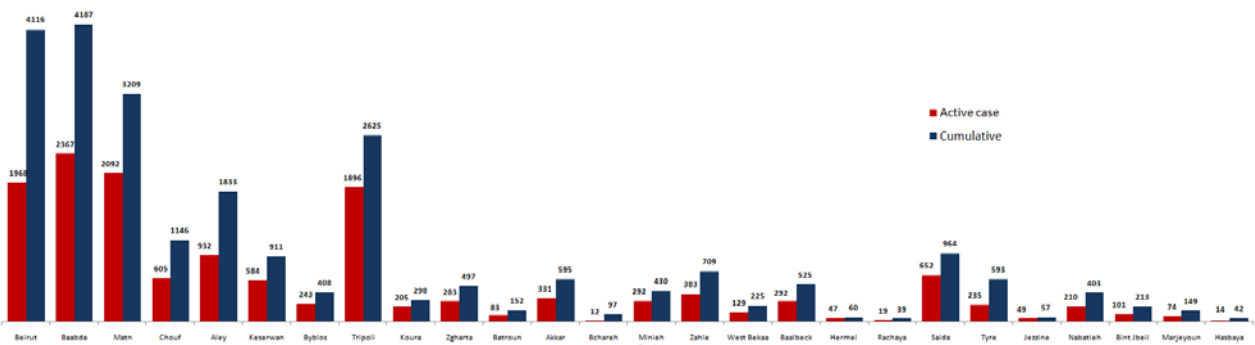
Distribution of deaths by Governorates



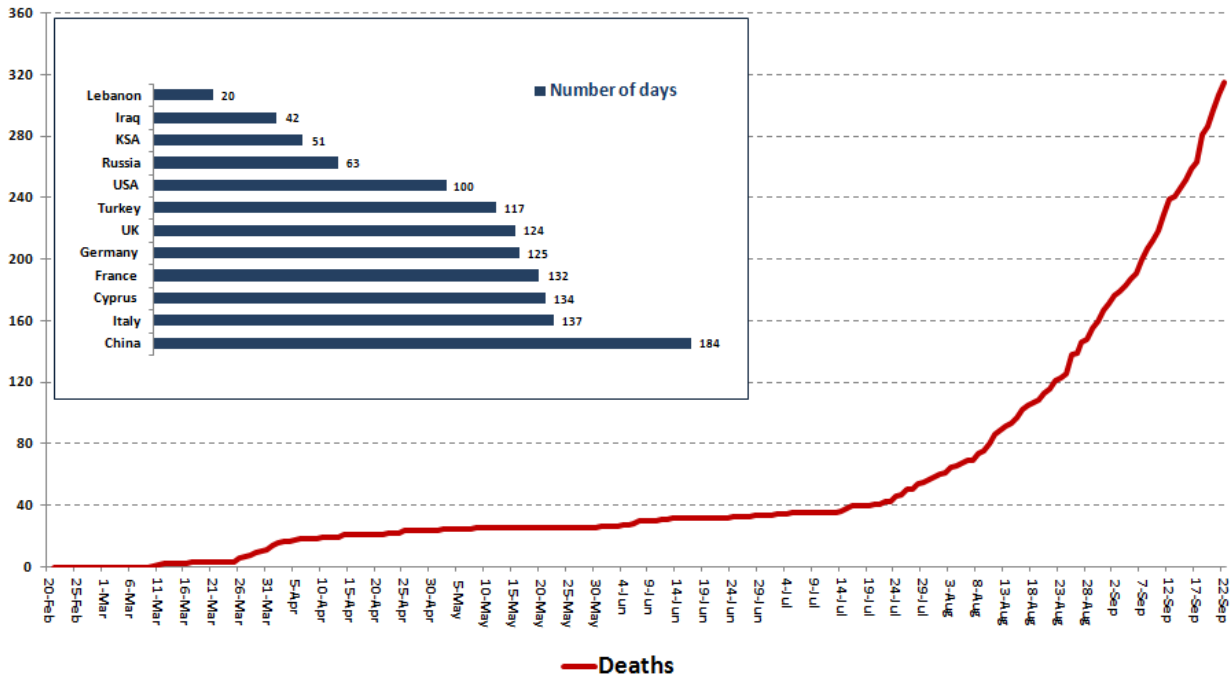
Distribution of deaths by Age



Distribution of Active Cases by Districts



Comparison of the rate of doubling of the number of deaths in Lebanon with other countries (death doubling rate)

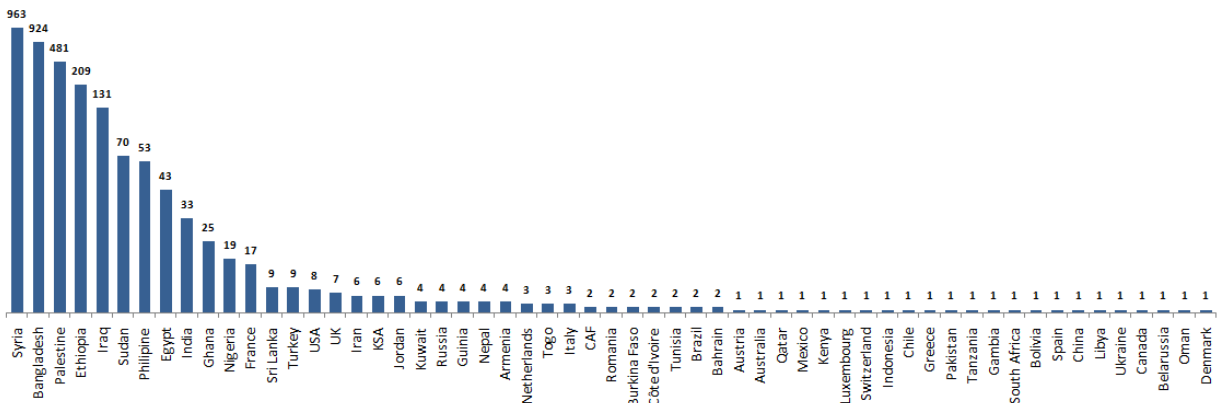


The distribution of the recorded deaths during the past 24 hours

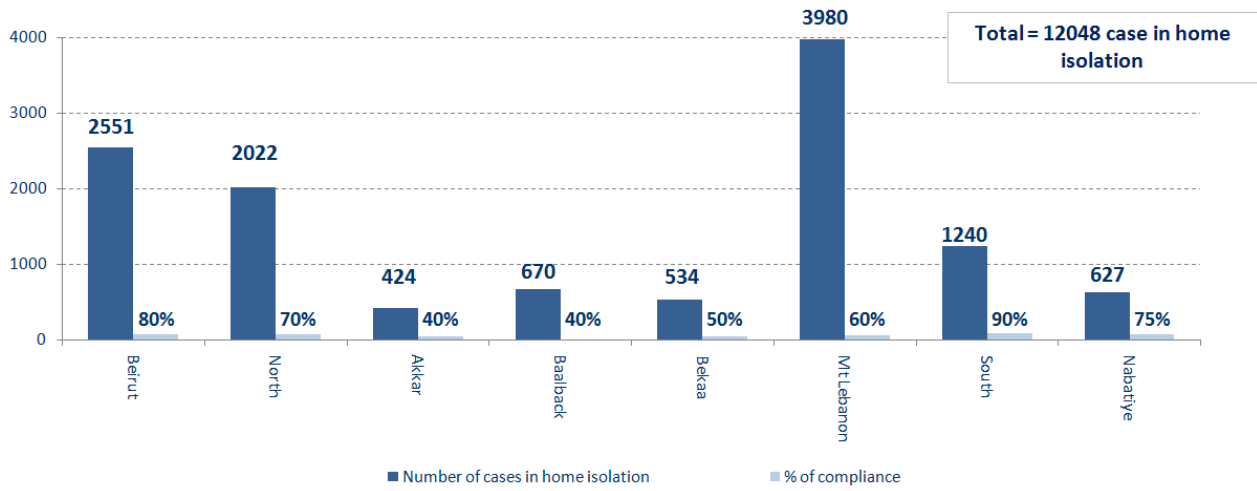
Hospital	Residence	Gender	Age	Chronic
Herawi Gov.	Zahle	Male	83	Yes
Home	West Bekaa	Male	74	Yes
El Nini	Tripoli	Female	86	Yes
Riyak	Zahle	Male	100	Yes
Mazloum	Minieh Denieh	Male	66	Yes
Makased	Beirut	Female	74	Yes
Makased	West Bekaa	Female	44	Yes
Harire Gov.	Beirut	Male	95	Yes

Distribution of cases by nationality

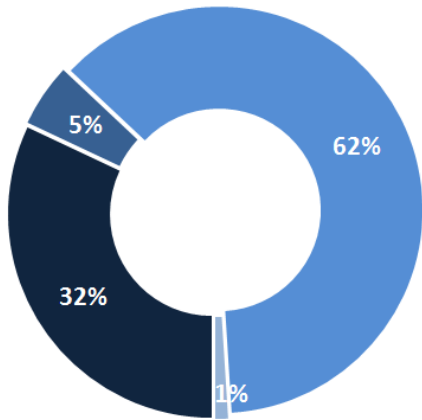
Lebanese : 27750 cases out of 30838 (88%)



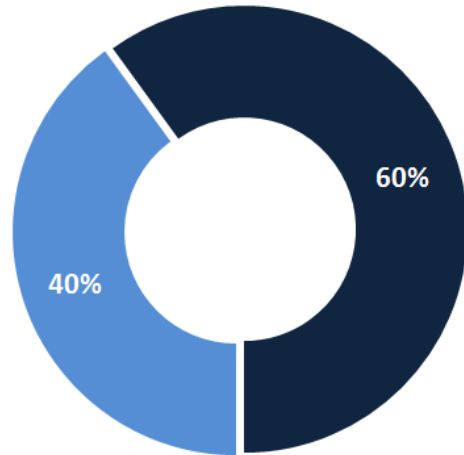
Number of individuals in home isolation and percentage of commitment to isolation



Exposure



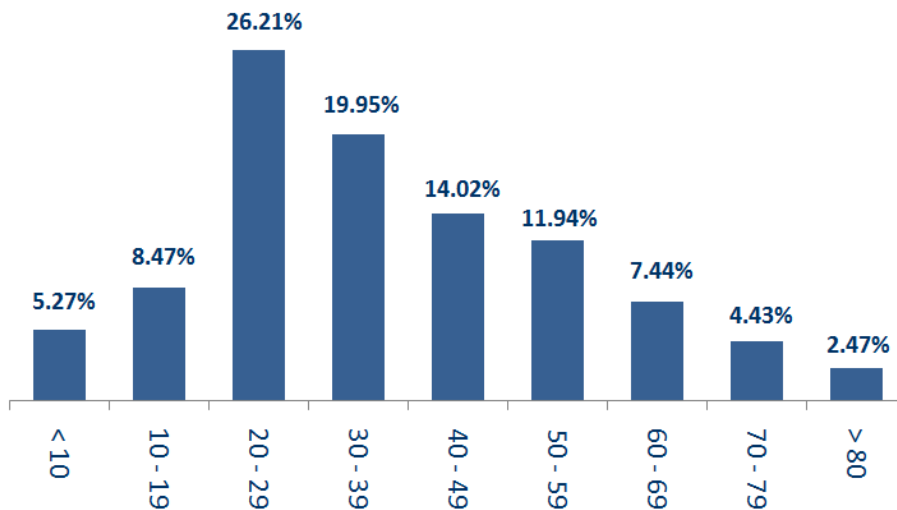
Distribution according to gender



■ Contact with confirmed case ■ Travel related ■ Under investigation ■ Unidentified source

■ Female ■ Male

Distribution by age



The number of beds available for those infected with Coronavirus and the occupancy rate



For daily information on all the details of the bed distribution available for Covid-19 patients in the various governorates according to the hospitals

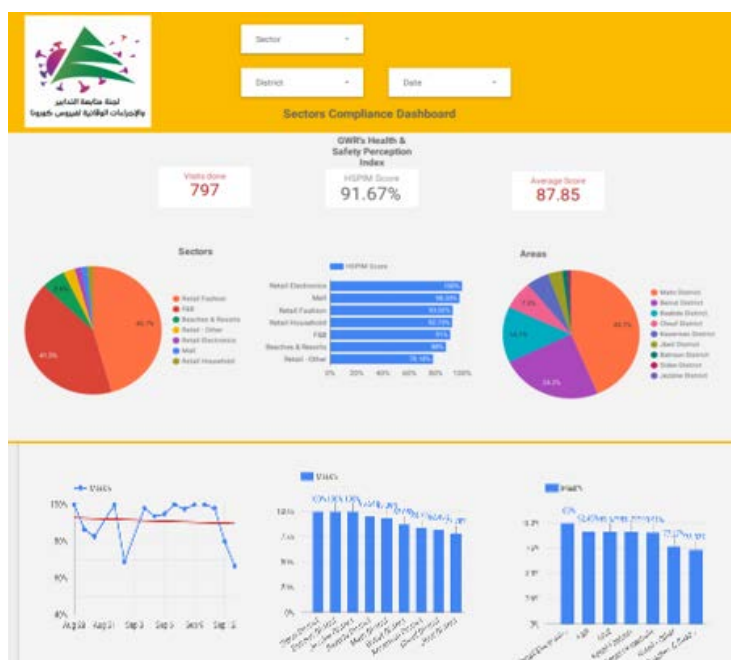
- Computer: <https://gisleb.cnrs.edu.lb/portal/apps/opsdashboard/index.html#/34b32db8030d4f229fc5db9ab686cca9>
- Mobile: <https://shorturl.at/cnqJ2>

Online platform to track sector commitment in general mobilization procedures

Based on the recommendation issued by the National Committee for Follow-up of Preventive Measures and Measures to Confront the Coronavirus to open all sectors, provided that the general mobilization procedure (safe distance, muzzle, and hand sterilization) be applied, a special electronic platform was created that allows monitoring and measuring the percentage of commitment by various sectors on an ongoing basis.

The detailed results can be viewed directly at the following link:

<http://bit.ly/covidsectordata>



Decisions and actions taken – 22/09/2020

Ministry of Public Health

The Ministry of Public Health issued the updated list of laboratories accredited by the Lebanese Ministry of Public Health to conduct PCR tests for Coronavirus (a copy of the laboratory names is attached at the end of the report).

The Ministry of Public Health issued the results of additional examinations for incoming trips to Lebanon on September 20 and 21, 2020, as 6 new injuries were recorded among the arrivals, distributed over the following trips:

Arriving from	Company	Flight Number	Number of Positive Cases
20/9/2020			
Baghdad	Iraqi Airways	131	1
Istanbul	Turkish Airlines	828	2
Cairo	Egypt Airways	711	1
Jeddah	MEA	365	1
21/9/2020			
Istanbul	Turkish Airlines	828	1
			6

Lebanese Red Cross

228,082	Number of PCR tests transferred to laboratories	45,152 (35 New)	Number of additional ambulance centers ready to respond	48	ambulance centers	5,090 (29 New)	cases transferred to hospitals
166	Number of volunteers trained to transfer PCR tests	1,498	Number of trained paramedics	8,601 (5 New)	total number of respondents	77,206	number of those benefiting from awareness *sessions
967	The number of university volunteers trained to follow up on prevention measures in companies and institutions	291	Number of university volunteers trained to conduct awareness sessions	550	total LRC volunteers for covid19	8,440 (5 New)	number of trained managers for isolation centers
4,210 (1 New)	Number of beneficiaries from educational electronic platforms COVID-19	89,859	Number of distributed equipment	1,236,031	total distributed posters, brochures, and flyers on covid19 prevention	652 (2 New)	number of prisons that have been disinfected

General Directorate of State Security

- Investigating and following up on suspected and positive cases and cases in home quarantine for residents and expatriates.
- Sending warnings and closing a number of violating commercial stores in the various regions.

Beirut	South	North	Akkar	Begaa	Nabateih	Baalbek Hermel	Mount Leb
40%	51%	68%	37%	60%	60%	10%	32%

General Directorate of Internal Security Forces

- Internal Security Forces circulated the preventive measures that must be followed when traveling by cars and using shared transportation and public cars.
- Writing arrest records against violators of the general closure decision

The number of seizure records during the past 24 hours					The total number of records that have been organized against violators of the general mobilization decisions since 03/08/2020		
Written records of violating institutions (absorptive capacity and preventive measures)					0		
Written records of persons violating the decision to wear a mask					0	Beirut	20,642
Written records of people violating the general mobilization decision (Aragil* and social distancing)					11	Mount Leb	18,813
Total					11	Beqaa	8,038
						North	6,784
Beirut	Mount Leb	Beqaa	North	South		South	6,785
0	0	8	0	3		Total	61,062

Ministry of Public Works and Transportation

Departing Flights		Arriving Flights	
Number of Flights	30	Number of Flights	27
Number of Departing Individuals	3,295	Number of Arrivals	1,997

Port	Entered			Left		
	Import	Direction	#	Export	Direction	#
Beirut	Containers	Alexandaria	2			
	Battleship	Forces	1			
Tripoli				Blank	Romania	1
Joneih	Diesel	Jeyyeh	1			
			4			1

General announcements

The following recommendations were issued by the Committee for Follow-up of Preventive Measures and Procedures for Coronavirus on 9/21/2020:

- The Ministry of Public Health activates the work of the epidemiological surveillance program, ensures that hospital and health institutions follow the agreed-upon risk containment protocol, circulates to laboratories, determines the timing for conducting examinations for contacts with a minimum of five days, develops a plan to increase the number of PCR examinations for contacts, studies and approves the proposed tariff To receive cases of Coronavirus infection in private hospitals and to activate adherence to the mechanism of reception, entry and exit of patients infected with Coronavirus in hospital institutions
- The Ministry of Public Health pays the material allowance owed to the directors of the isolation centers, provided that the international donors work to activate coordination and secure the operational costs of these centers
- The Syndicate of Private Hospitals and Doctors in Beirut and the North and the Syndicate of Nurses and Nurses in Lebanon set up an emergency line for each of them and put it at the disposal of health sector workers to report any problem or complaint related to the non-application or misapplication of the protocol for containing risks within health and hospital institutions.
- The Syndicate of Private Hospital Owners will work to open and operate special departments for Corona patients in all category "A" hospitals, while providing incentives for doctors, nurses, and workers in these departments.
- The Ministry of Interior and Municipalities and the Ministry of Tourism to activate the procedures of the third phase of the plan to reopen the generalized sectors in support of the recommendations issued on August 26, 2020 in terms of taking legal measures against violators
- The Ministry of Interior and Municipalities and the Ministry of Tourism to activate the procedures of the third phase of the plan to reopen the generalized sectors in support of the recommendations issued on August 26, 2020 in terms of taking legal measures against violators
- The Ministry of Justice works to reduce overcrowding in prisons
- Developing an action plan for responding and containing cases infected with Coronavirus in health care homes by the Ministries of Public Health and Social Affairs
- Include the daily report issued by the National Operations Room for Disaster Management an interactive map showing the affected cases for every thousand residents for fourteen days in each district, so that appropriate measures can be taken
- Waiting to close the sectors and work to implement and activate all recommendations while continuing to assess the reality of the epidemic
- The Ministry of Information circulates recommendations to citizens in order to raise awareness and adhere to preventive measures and procedures
- The General Directorate of Civil Aviation at the Ministry of Public Works and Transport issued Circular No. 52/2 on September 21, 2020 to all airlines and ground services companies operating at Rafic Hariri International Airport regarding procedures related to passengers arriving in Lebanon starting from September 23, 2020
- Implementing the Ministry of Interior and Municipalities Decision No. 1129 of 9/17/2020 regarding amending the opening and closing times of industrial and commercial establishments, which kept work at the time of preventing exit and entering the streets between the first hour of midnight until six in the morning of every day, and approved the recommendations issued by A meeting of the Committee for Follow-up of Preventive Measures and Measures to Confront the Coronavirus on 9/16/2020

Note: The decisions can be found at www.drm.pcm.gov.lb

Examples of lack of adherence to safety measures

- Demand gatherings and demonstrations.
- Failure to comply with the preventive measures and procedures required in a number of stores and markets (putting on a muzzle or face mask, sterilizing hands, maintaining a safe distance).
- Non-compliance with the 50% occupancy rate in several restaurants and amusement game centers.
- Gatherings for social events.
- Failure of those in contact with confirmed cases to adhere to home isolation procedures until the results of the laboratory tests are issued.

If you feel any symptoms, call directly the hotline of the Ministry of Public Health: 1214 or 01/594459

A list of the laboratories accredited by the MoPH to conduct PCR tests

المختبرات الحكومية المؤهلة لإجراء التشخيص المخبري لفيروس كورونا بطريقة الـ RT-PCR

الموقع	المختبر
بيروت	مستشفى رفيق الحريري الجامعي RHUH
حيفا	مستشفى حيفا الحكومي
طرابلس	مستشفى طرابلس الحكومي
البترون	مستشفى البترون الحكومي
كسروان	مستشفى فتوح كسروان الحكومي (البوار)
البطنة	مستشفى نبيه يزى الحكومي الجامعي
تبنين	مستشفى تبنين الحكومي
بنت جبيل	مستشفى بنت جبيل الحكومي
بعلبك	مستشفى بعلبك الحكومي
زحلة	مستشفى الرئيس الياض الهراوي الحكومي

المختبرات الخاصة المؤهلة لإجراء التشخيص المخبري لفيروس كورونا بطريقة الـ RT-PCR

الموقع	المختبر
بيروت	مستشفى الجامعة الأميركية AUBMC
بيروت	مستشفى أوتيل ديو الجامعي Hotel-Dieu de France (HDF)
بيروت	مختبرات رودولف ميريو (الجامعة اليسوعية - المتحف) Laboratoire Rodolphe Mérieux (Université Saint-Joseph)
بيروت	مستشفى القديس جاورجيوس الجامعي Saint-George Hospital - UMC
بيروت	مستشفى المقاصد Makassed General Hospital
بيروت	مستشفى رزق الجامعي LAU Medical Center - Rizk Hospital
بيروت	مستشفى اللبناني الجعيتاوي الجامعي Hôpital Libanais Geitawi - CHU
بيروت	مستشفى الوردية Hôpital Notre-Dame du Rosaire
بيروت	مختبر مركز الأطباء Doctor 's Center
بيروت	مختبر فونتانا (الحمرا) Fontana Laboratories
بيروت	مختبر الأمن العام (العنلقية)
بيروت	مختبرات جبر وغرة Laboratoire Jabre-Ghorra
بيروت	مختبر السان مارك Saint Marc Medical & Diagnostic Center
لغبيري	المختبرات الحديثة Laboratoire Moderne (Modern Lab- Berjaoui)
لغبيري	مستشفى الساحل Sahel General Hospital (SGH)
لغبيري	مستشفى الزهراء الجامعي
برج الزاينة	مستشفى الرسول الأعظم Al Zahraa Hospital - UMC
حارة حريك	مستشفى بهمن
حارة حريك	مختبر ناتيونال دياغنونستك سرفيس كومباني Al Rassoul Al Aazam Hospital Bahman Hospital
حارة حريك	مختبر دياغنونستك سرفيس كومباني National Diagnostic Services Company (NDSC)
الدرجة	مختبر الدكتور محمود عثمان - مركز التحاليل الطبية Medical Diagnostic Center
الجناب	مختبر أميريكين دياغنونستك سنتر American Diagnostic Center (ADC)
بعنا	مستشفى جبل لبنان Mount Lebanon Hospital
بعنا	مستشفى السان جورج الحدث Hôpital Saint-George - Hadath
بعنا	مختبر الهادي Al Hadi Laboratory
بعنا	مختبر INOVIE-Liban

Hôpital du Sacré- Coeur	مستشفى قلب يسوع	الحازمية
Clinigene	مختبر كلينيجان	الحازمية
Hôpital Dr.Samir Serhal	مستشفى سرحال	المن
Transmedical for Life	مختبر ترانسميديكال فور ليف	المن
Haroun Hospital	مستشفى هارون	الزلفا
Bellevue Medical Center (BMC)	مستشفى بلغو	المنصورة
Hôpital Albert Haykal	مستشفى هيكل	الكورة
Centre Hospitalier du Nord (CHN)	مركز الشمال الإستشفائي	زغرتا
Mazloum Hospital	مستشفى المظلوم	طرابلس
Al Mounla Hospital	مستشفى المنلا	طرابلس
Nini Hospital	مستشفى النبي	طرابلس
LMSE - المعهد العالي للدكتوراه، الجامعة اللبنانية	مختبر ميكروبيولوجيا الصحة والبيئة	طرابلس
CHU - Notre-Dame des Secours	مستشفى سيدة المعونات الجامعي	جبل
Lab Akiki & Boulos	مختبر عقريقي وبولس	جبل
Centre Médical Wakim	مختبر واكيم	جونية
Ain Wazein Hospital	مستشفى عين وزين	الشوف
Hammoud Hospital UMC	مستشفى حمود الجامعي	صيدا
Al Karim Medical Laboratory (KML)	مختبر الكريم	صيدا
Sheikh Ragheb Harb Hospital	مستشفى الشيخ راجب حرب	البيشة
Sabbah Diagnostic Center (SDC)	مختبر السباح	البيشة
Jabal Amel Hospital	مستشفى جبل عامل	صور
Mashrek Diagnostic Center (MDC)	مختبر المشرق	صور
Dar Al Amal University Hospital	مستشفى دار الأمل الجامعي	بعلبك
Khoury General Hospital	مستشفى خوري	زحلة
Medical Care Center (MCC)	مختبر ميديكال كير سنتر	زحلة

مختبرات المستشفيات العسكرية

Hôpital Militaire Central	المستشفى العسكري المركزي في بيروت	بيروت
---------------------------	-----------------------------------	-------

المختبرات المؤهلة لأخذ عينات "المسحات الأنفية" بطريقة Drive- thru

Medical Diagnostic Treatment Center (MDTC)	مختبر ميديكال دياغنونمنتيك تريتمانت سنتر (الحمراء)	بيروت
MedLab SAL CIC ALS	مختبر ميد لاب (الحمراء - الجفجفون)	بيروت
Itani Medical Laboratories	مختبرات عيتاني (المزرعة)	بيروت
ABC Laboratories	مختبر أ ب سي	الأشرفية
Mouawad Medical Laboratory	مختبرات معوض الطبية	التياح
Rihan Medical Center	مختبرات الشياح (د. فؤاد ریحان)	التياح
Expert Lab	مختبر إكسبرت لاب	المنصورة
Life LAB	مختبر لايف لاب	بعلبك
Riyak Hospital	مستشفى الرياق	رياق