



Lebanon National Operations Room Daily Report on COVID-19

Thursday, October 22, 2020

Report #218

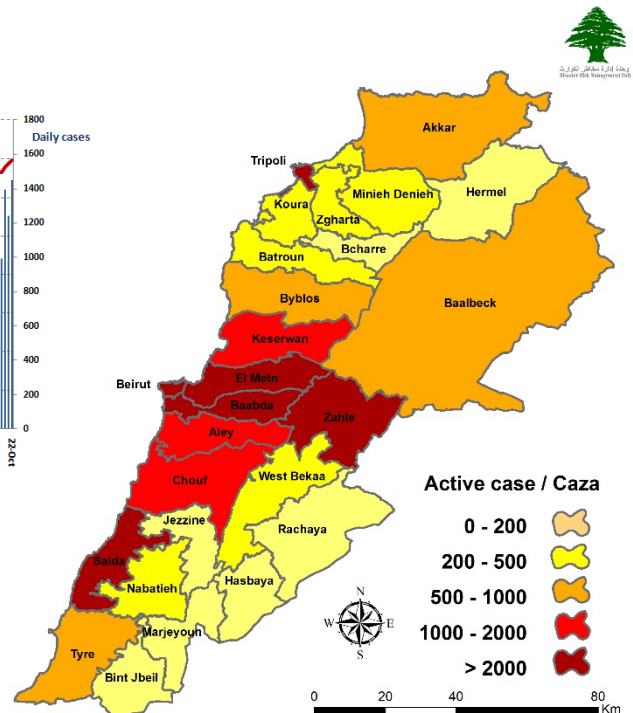
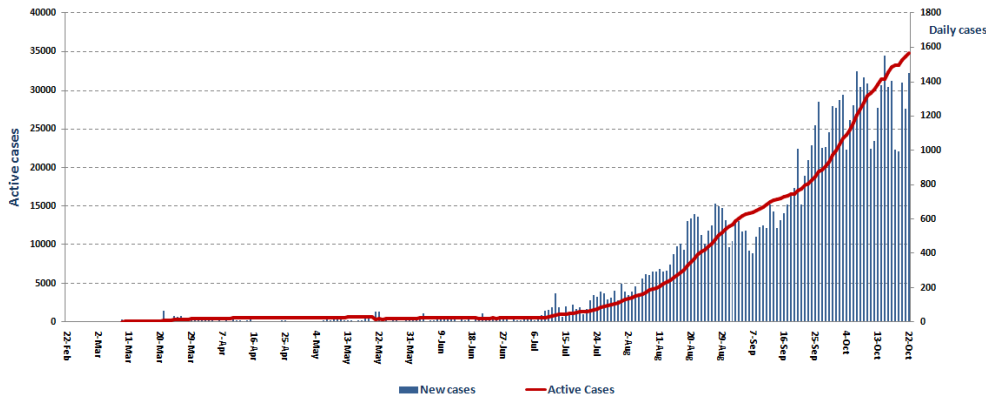
Time Published: 10:30 PM

1,450 New Cases		67,029 Total Cases since 21.2.2020		552 Total Deaths		31,392 Total Recovered	
1,442 Residents	8 Expats	64,931 Residents	2,098 Expats	16 New Deaths		922 New Recovered	
1,320 Total Cases in the Health Sector		35,085 Total Active Cases		693 Hospitalized Cases		241 Total Cases in ICU	
9 New Cases in the Health Sector		34,392 Cases in Home Isolation		452 Mild Cases		3 New Cases in ICU	
1,058,893 COVID-19 Tests since 21.2.2020		Lebanon Status compared to the World					
615 COVID-19 Tests at Airport within 24 hrs.		13,306 COVID-19 tests for residents within 24 hrs.		Total Cumulative	67,029	Total Cumulative	41,734,935
				Total Deaths	552	Total Deaths	1,139,647
				Deaths percentage	0,82%	Deaths percentage	2.73%
				Total recoveries	31,392	Total recoveries	31,059,605

Ref: Ministry of Public Health Data

Number of Cases by Location

- 10,975 case is Under investigation



Beirut	60
Ashrafieh	9
Ein Al Mreisseh	1
Basta Al Fawka	1
Borj Abi Haidar	2
Hamra	1
Mar Elias	3
Mazraa	3
Mseitbeh	2
Raouche	1
Ras Beirut	1
Sanayeh	2
Tallet El Drouz	1
Tallet Al Khayat	1
Tariq Jdeedeh	4
Zarif	1
Others	27
Baabda	101
Ein El Rimmaneh	8
Baabda	4
Bir Hassan	1
Borj Al Brajneh	17
Botchay	1
Chiah	6
Forn Al Shebbak	3
Ghobeiry	3
Hadat	12
Haret Hreik	5
Hazmieh	4
Loueizy	1
Jnah	2
Lailaky	1
Mreijeh	3
Ouzai	4
Sebnay	1
Tahweetet Ghadir	2
Others	8
Baalbek	15
Arsal	2
Baalbek	2
Labweh	4
Others	7
Batroun	2
Others	2
Bint Jbeil	9
Aita El Jabal	2
Harees	1
Kafra	1
Rmeish	1
Yaroun	2
Others	2
Koura	4
Dahr El Ein	1
Kfarhazir	1
Kosba	1
Others	1

Chouf	43
Anout	1
Barja	6
Barouk	1
Baqaata	1
Chhim	6
Damour	1
Jiyyeh	2
Ketermaya	2
Naameh	5
Niha	3
Wady Al Zayne	1
Werdanieh	1
Rmeileh	1
Saadiyat	1
Sibline	1
Zaarourieh	1
Others	9
Hasbaya	6
Hasbaya	1
Others	5
Byblos	25
Blat	1
Halat	1
Jedayel	1
Monsef	1
Ras Osta	1
Others	20
Jezzine	12
Baysour	1
Ein Majdoleen	1
Jenesnaya	2
Kfarhouna	1
Lebaa	1
Roum	1
Others	5
Marjeyoun	16
Khiyam	1
Majdel Silim	1
Markaba	1
Mays Al Jabal	3
Qabrikha	2
Qlei'aa	2
Souwaneh	2
Taybeh	2
Others	2
Tripoli	7
Mina	1
Tripoli	1
Wady Nahle	1
Qalamoun	1
Qebbeh	1
Western Beqaa	5
Ghazzeh	1
Kefrayya	1
Others	3

Kesrwen	98
Ashkout	1
Ajaltoun	2
Oqaybeh	1
Aramoun	1
Adra & Ether	1
Adma	1
Adonis	3
Aintoura	1
Ballouneh	3
Fatqa	1
Bouar	2
Ghazir	3
Ghbaleh	1
Ghodras	2
Ghosta	3
Hrajel	1
Ghadir	2
Haret Sakher	6
Kaslik	3
Sahel Alma	7
Sarba	5
Kfardebian	1
Kfarhabab	1
Kfour	3
Qlei'aat	1
Raasheen	2
Safra	2
Sehaileh	1
Tabarja	6
Zouk Michael	1
Zouk Mosbeh	11
Others	19
Saida	89
Abra	4
Adloun	1
Ein Al Delb	3
Ein Al Helwe	5
Bisarieh	1
Bramieh	1
Ghazieh	10
Haret Saida	3
Hlalieh	5
Kfar Shallal	1
Kfarhatta	1
Kfarmelky	5
Miyye w Miyye	1
Qanay	1
Saida al Wostany	1
Old Saida	6
Salhieh	2
Sarafand	2
Zeeta	1
Others	35

Matn	151
Ein Alaq	1
Ein Aar	1
Antelias	3
Baabdat	3
Bouchrieh	1
Beit Shabab	2
Beit Mery	1
Bekfaya	2
Borj Hammoud	9
Bqennaya	1
Broummana	2
Bsalim	1
Btegrine	1
Byaqout	1
Dbayyeh	3
Dekwene	12
Dhour Shweir	1
Deek Al Mahdy	2
Fanar	4
Horch Tabet	1
Jal El Dib	3
Jdeidet El Metn	2
Mansourieh	2
Aoukar	3
Mazraet Yashouh	3
Monteverde	2
Mteileb	3
Nabay	1
Naqqash	3
Qanbt Broumana	1
Qornet Shehwan	3
Qornet El Hamra	2
Rabieh	1
Raouda	1
Roumieh	3
Sabtieh	3
Sed El Bouchrieh	3
Sin El Fil	3
Zikrit	2
Zalqa	2
Others	37
Menyh Duniyyeh	12
Bakh'oun	2
Deir Amar	1
Menyeh	6
Others	3
Nabatieh	21
Azza	1
Arnoun	1
Deir Al Zahrany	1
Others	18
Rashaya	2
Others	2

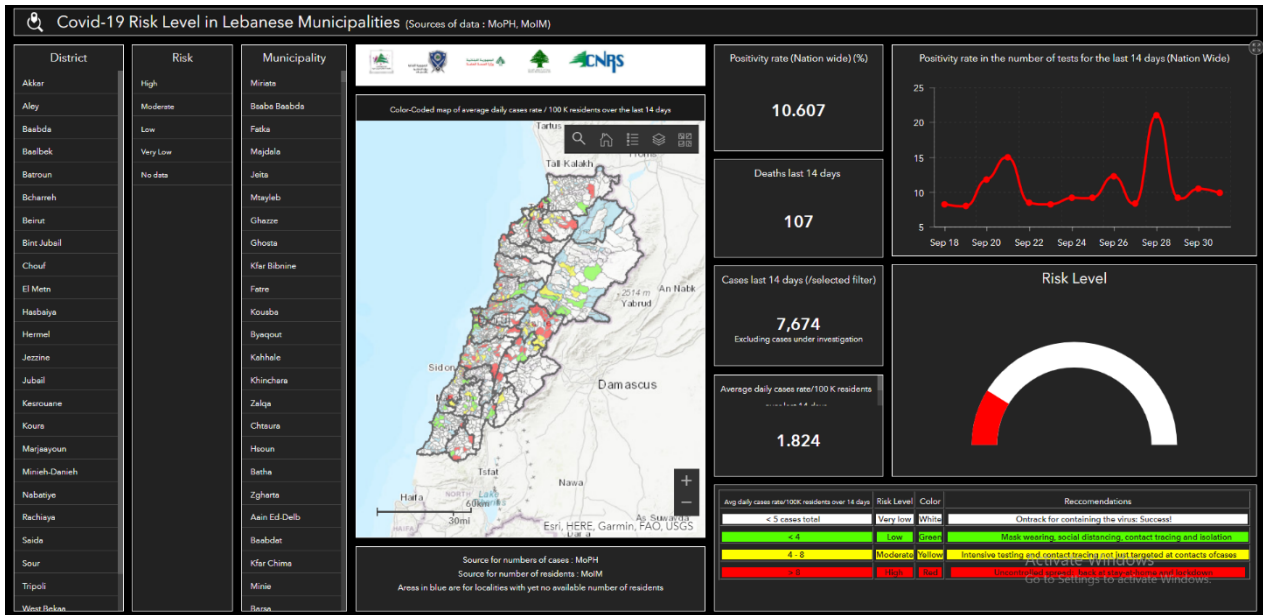
Akkar	24
Old Akkar	2
Bebnin	2
Beit Younes	1
Borj Al Arab	1
Shadqouf	1
Halba	1
Houchab	1
Elat	2
Jdeidet El Qaytaa	1
Mahdel	1
Mas'oudieh	1
Wady Khaled	1
Qrayat	1
Zouk Al Hossnieh	1
Others	7

Aleyh	51
Aley	9
Aramoun	5
Aitat	2
Ein Anoub	1
Bshamoun	6
Bleibel	2
Btater	2
Shemlan	1
Amrousieh	2
Al Oumara	8
Hay El Sillom	5
Houmal	4
Khaldeh	3
Others	1

Tyre	36
Aiteet	1
Bazourieh	1
Borj Al Shemaly	2
Shehabieh	1
Qanoun Al Nahr	4
Jbal Al Botm	2
Jouwayya	2
Qleileh	1
Ramadiéh	1
Maashouq	5
Yanouh	1
Others	15

Zahleh	85
Kfarzabad	1
Bar Elias	2
Mreijat	1
Niha	1
Wady Al Arayesh	1
Qab Elias	3
Saadnayel	1
Taalabaya	2
Terbol	1
Mar Elias	1
Others	13
Zghorta	10
Majdlayya	2
Zghorta	4
Others	4

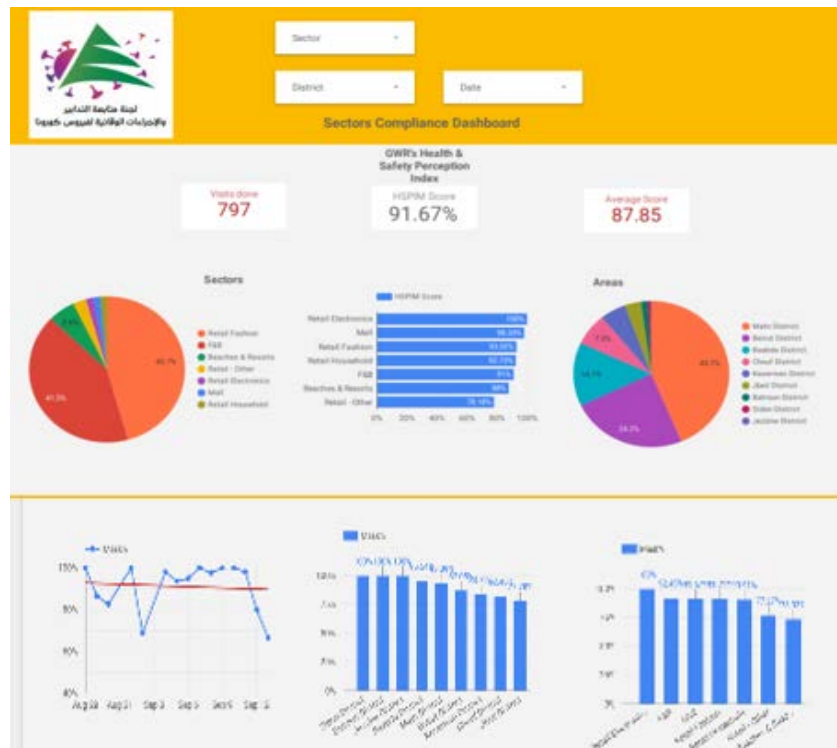
The Online platform to measure the level of risk of the spread of the new Corona virus



This interactive platform allows you to know the level of risk of spreading the kurna virus according to districts, based on the number of cases registered daily and the number of residents in each district. For more information on a daily basis, you can access the following link:

<https://bit.ly/DRM-RiskLevelInMunicipalities>

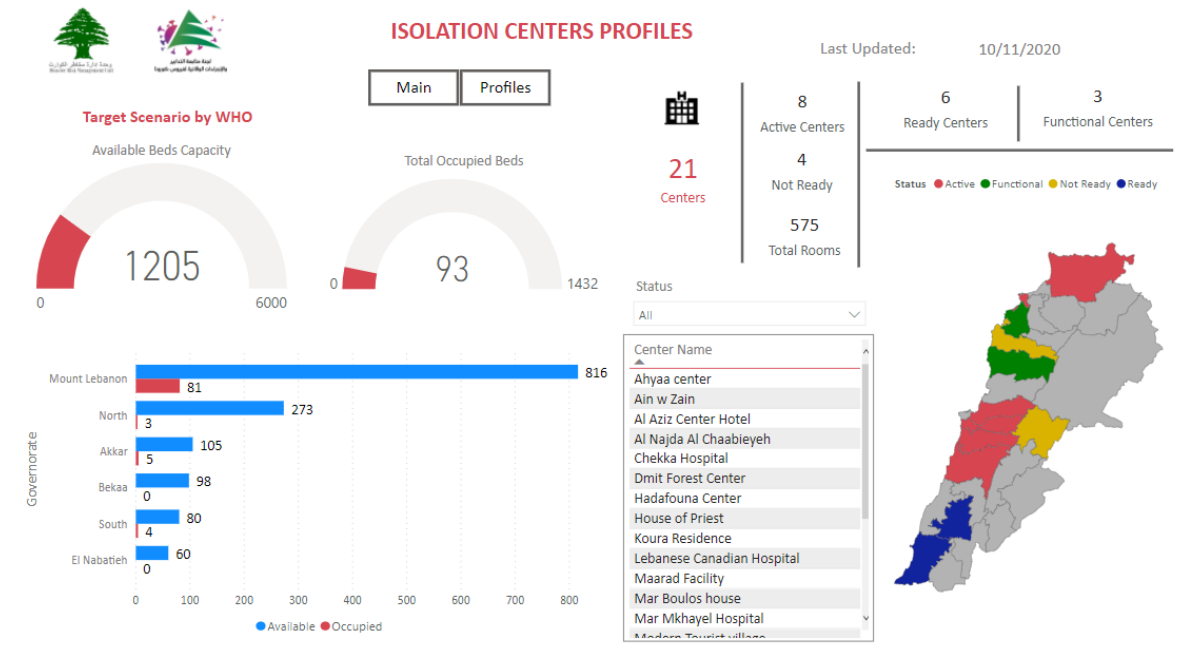
Online platform to track sector commitment in general mobilization procedures



Based on the recommendation issued by the National Committee for Follow-up of Preventive Measures and Measures to Confront the Coronavirus to open all sectors, provided that the general mobilization procedure (safe distance, muzzle, and hand sterilization) be applied, a special electronic platform was created that allows monitoring and measuring the percentage of commitment by various sectors on an ongoing basis. The detailed results can be viewed directly at the following link:

<http://bit.ly/covidsectordata>

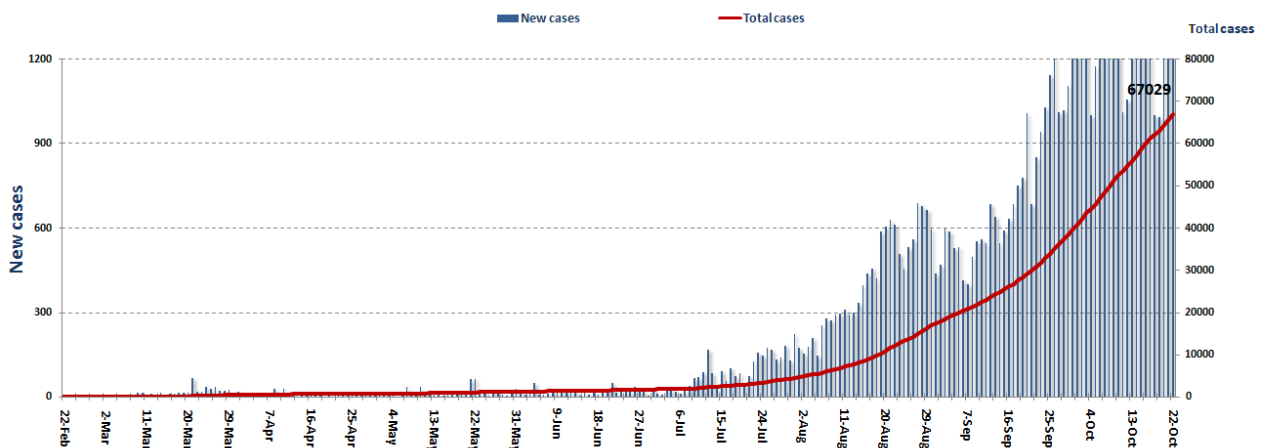
Occupancy rate of isolation centers for cases infected with Coronavirus



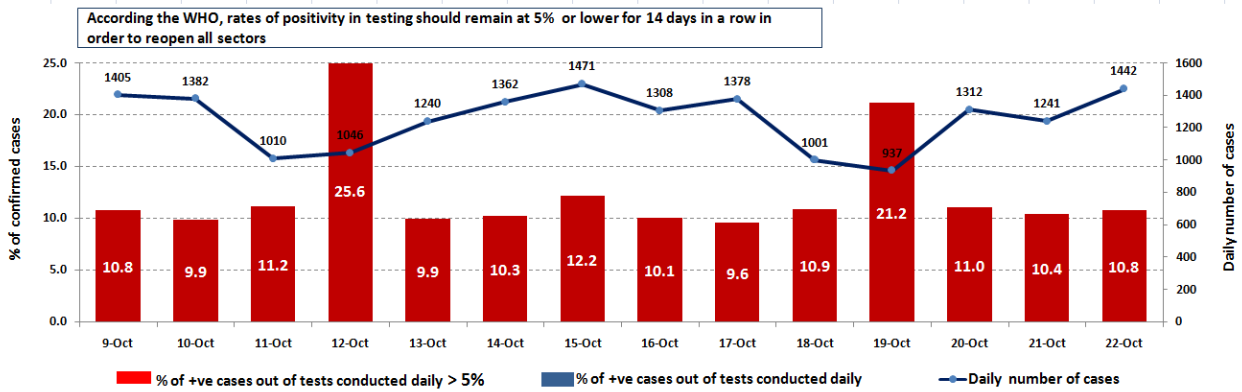
For more information about the isolation centers' distribution and the percentage of their occupancy, enter the following link: <http://bit.ly/DRM-IsolationCentersProfiles>

Note: These centers have been equipped in cooperation between the National Committee for Follow-up of Preventive Measures and Measures to Confront the Coronavirus and Governors and Municipalities, the United Nations Development Program, the World Health Organization, UNICEF, the Ministry of Public Health, the Syndicate of Nurses in Lebanon and the Syndicate of Specialists in Social Work.

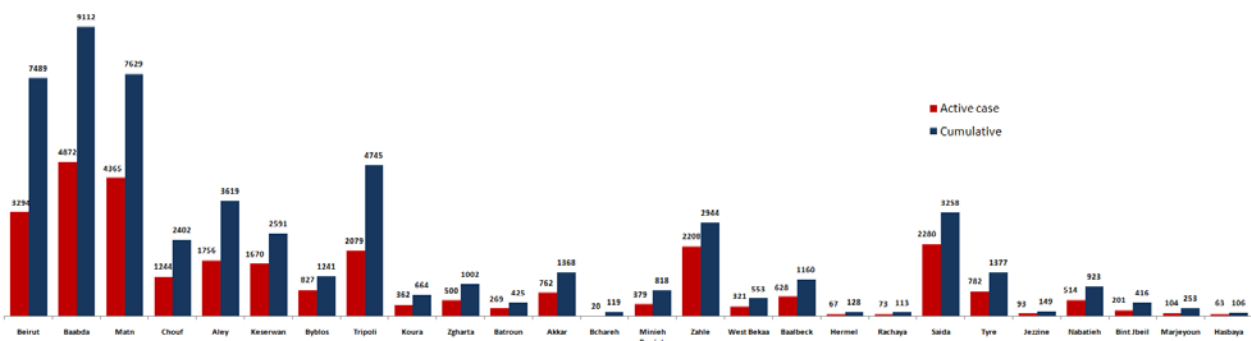
Cases per day



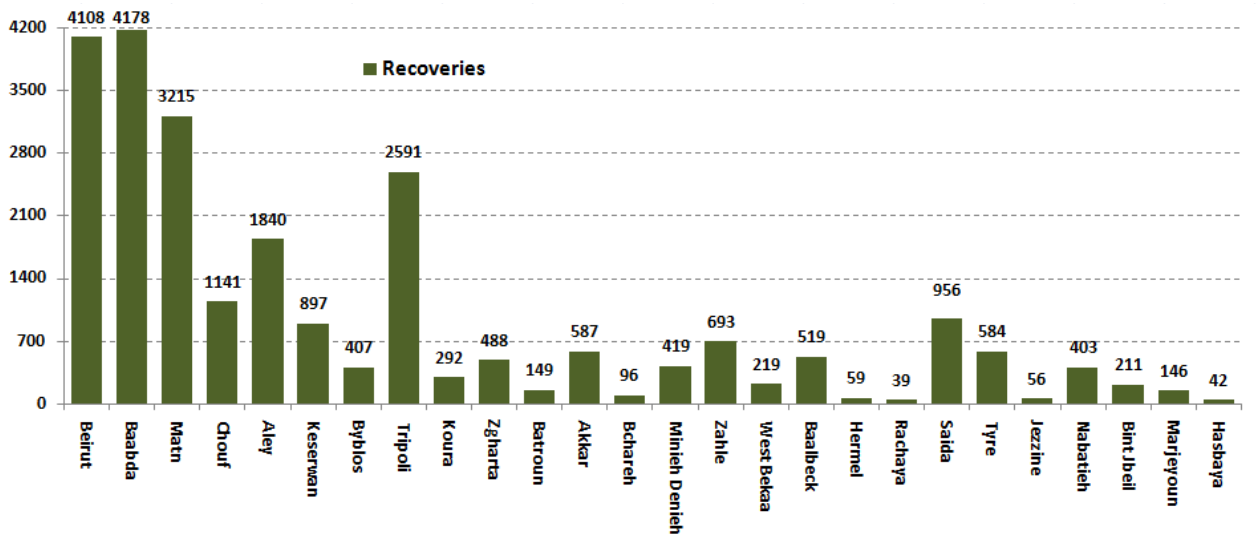
The percentage of positive cases out of the number of daily checks (9-22 October 2020)



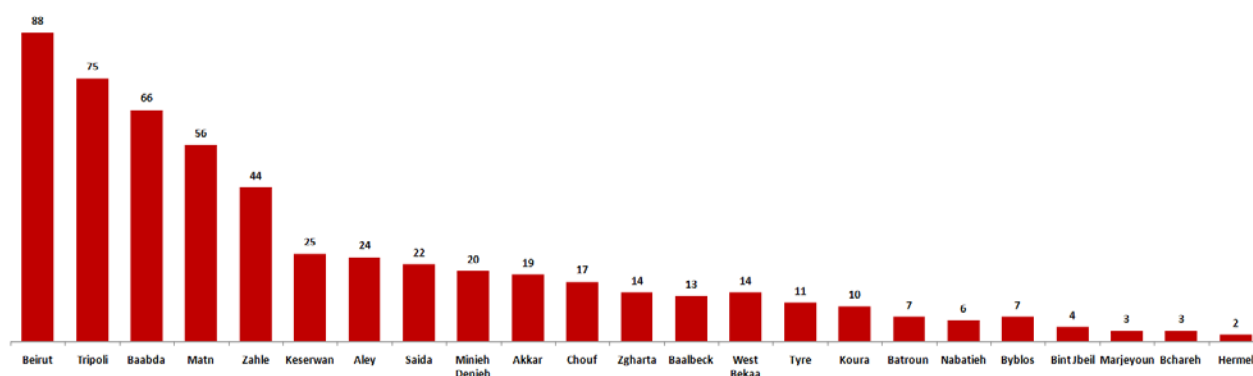
Distribution of Active Cases by Districts



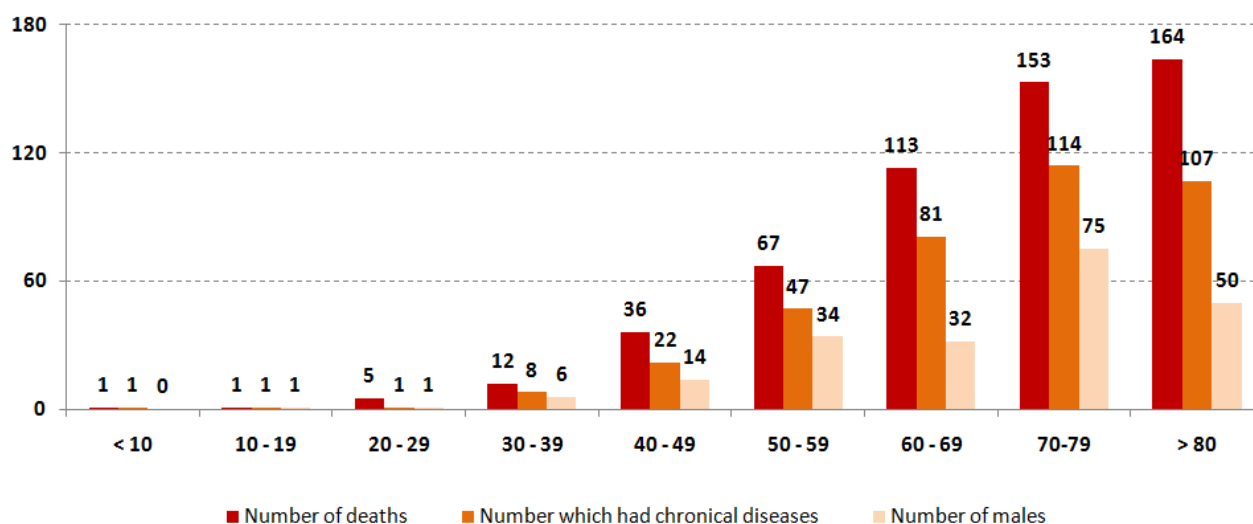
Recoveries



Distribution of deaths by Governorates



Distribution of deaths by Age

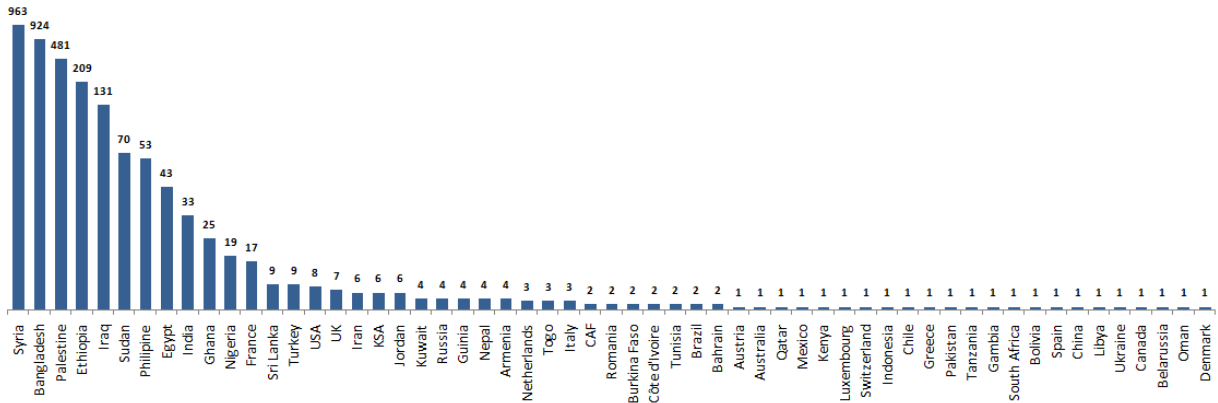


The distribution of the recorded deaths during the past 24 hours

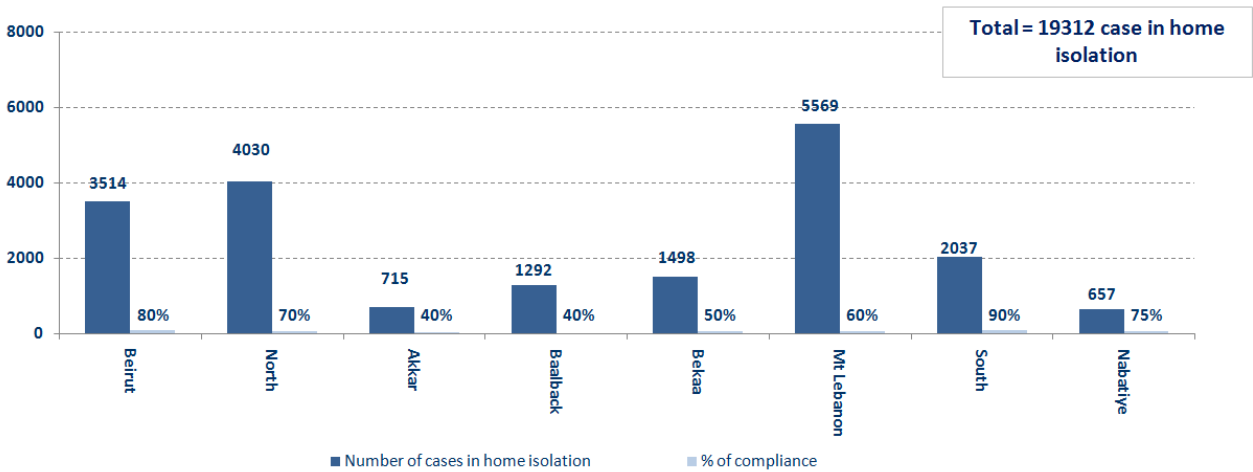
Hospital	Residence	Gender	Age	Chronic
AUBMC	Baabda	Male	63	Yes
AUBMC	Baabda	Male	72	Yes
Ftough – Kesrwen Hospital	Kesrwen	Female	60	Yes
Ftough – Kesrwen Hospital	Matn	Male	58	Yes
Elias Herawi Hospital	Zahleh	Female	74	Yes
Tebneen Gov Hospital	Beqaa Gharby	Male	64	Yes
Rizk Hospital	Matn	Male	68	Yes
Rizk Hospital	Matn	Female	69	Yes
Rizk Hospital	Matn	Male	86	Yes
Rizk Hospital	Aleyh	Male	71	Yes
Rizk Hospital	Matn	Male	71	Yes
Rizk Hospital	Baabda	Male	62	Yes
Rizk Hospital	Baabda	Female	89	Yes
Rizk Hospital	Matn	Male	69	Yes
Rizk Hospital	Matn	Male	86	Yes
Saint George - Hadath	Beirut	Female	76	Yes

Distribution of cases by nationality

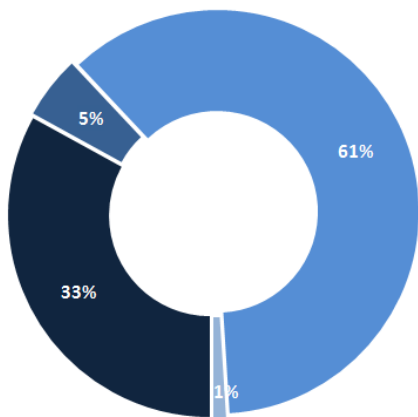
Lebanese : 61417 cases out of 67029 (88%)



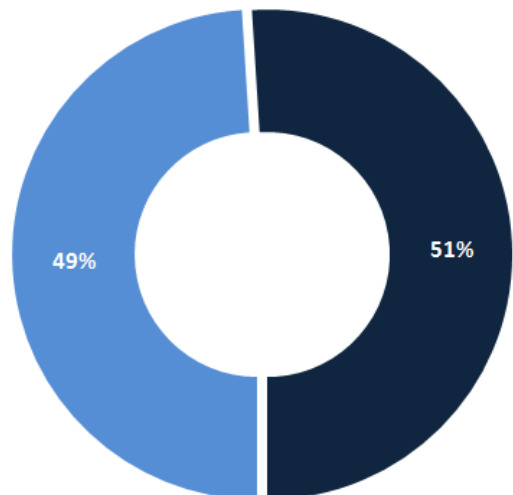
Number of individuals in home isolation and percentage of commitment to isolation



Exposure



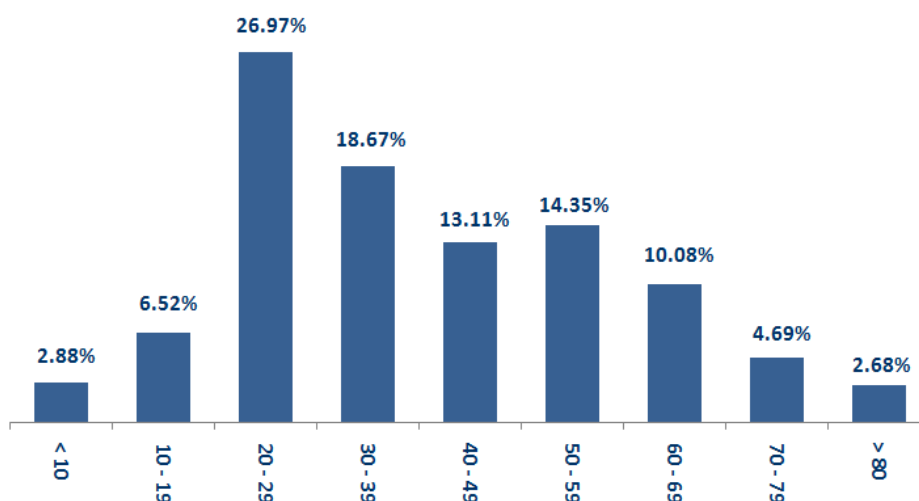
Distribution according to gender



■ Contact with confirmed case ■ Travel related ■ Under investigation ■ Unidentified source

■ Female ■ Male

Distribution by age



Decisions and actions taken – 10/22/2020

Ministry of Public Health

- The Ministry of Public Health is discussing with the Russian embassy in Lebanon strengthening cooperation between the ministries of health in the two countries in facing Corona, and Lebanon's interest in obtaining the Russian vaccine after its approval by the World Health Organization.

- In the context of combating the misleading of citizens with the results of the PCR examinations, it is important for the Ministry of Health to alert citizens to the presence of entities that use the official logo of the Ministry and send messages to arrivals with the results of PCR tests not issued by the Ministry. The mechanism used by the medical teams of the Ministry depends on text messages and direct contacts with all expatriates. The Ministry of Public Health also confirmed that it is in the process of legal prosecution for those who intend to mislead citizens by publishing tests that are not issued by the relevant official references.

- The Ministry of Public Health reported that PCR examinations had been completed for flights that arrived in Beirut and were conducted at the airport on 10/18/2020, and the results showed that there were forty-five (45) positive cases distributed over the following flights:

Arriving from	Company	Flight Number	Number of Positive Cases
10/18/2020			
Baghdad	Iraqi Airways	131	7
Istanbul	MEA	266	6
Baghdad	MEA	323	8
Najaf	MEA	327	5
Istanbul	MEA	268	11
Istanbul	Turkish Airlines	826	8
Total			45

Lebanese Red Cross

235,498	Number of PCR tests transferred to laboratories	51,304 (141 New)	Number of additional ambulance centers ready to respond	48	ambulance centers	6,775 (60 New)	cases transferred to hospitals
166	Number of volunteers trained to transfer PCR tests	1,498	Number of trained paramedics	8,772 (12 New)	total number of respondents	88,689 (490 New)	number of those benefiting from awareness *sessions
967	The number of university volunteers trained to follow up on prevention measures in companies and institutions	291	Number of university volunteers trained to conduct awareness sessions	550	total LRC volunteers for covid19	8,658 (12 New)	number of trained managers for isolation centers
4,341 (7 New)	Number of beneficiaries from educational electronic platforms COVID-19	258,639 (129,867 New)	Number of distributed equipment	1,242,387	total distributed posters, brochures, and flyers on covid19 prevention	569 (8 New)	number of prisons that have been disinfected

General Directorate of Internal Security Forces

The number of seizure records during the past 24 hours					The total number of records since 03/08/2020		
Written records of violating institutions (absorptive capacity and preventive measures)					3		
Written records of persons violating the decision to wear a mask					0	Beirut	21,287
Written records of people violating the general mobilization decision (Aragil* and social distancing)					330	Mount Leb	20,481
Total					333	Beqaa	8,777
						North	7,518
Beirut	Mount Leb	Beqaa	North	South	South	7,812	
75	118	62	15	63	Total	65,875	

General Directorate of State Security

- Reporting the closure of the Regional Directorate of Works in the Zahle Brigades and the closure of the South Lebanon Financial Department in the state-owned Sidon Brigades, due to the infection of a number of employees with the Coronavirus. Reporting the closure of schools and shops in the town of Kafr Killa, with the exception of food stores, for one day as a precaution to limit the spread of the Corona virus.

-Reporting the closure of the Nabatieh Technical Institute after it was proven that a student was infected with the Coronavirus, in order to conduct the necessary sterilization.

- 77 The total number of injuries was reported in the General Directorate of State Security. Reporting the percentage of compliance with the general mobilization decision in the governorates, which came as follows within the past 24 hours:

Beirut	South	North	Akkar	Beqaa	Nabateih	Baalbek Hermel	Mount Leb
50%	48%	43%	40%	66%	58%	N/A	45%

General Directorate of General Security

- The report of the death of a person in Al-Koura Governmental Hospital due to the Corona virus.
- The report of the closure of the Marjeyoun profession after the father of one of the students came to school with Corona virus.
- Reporting the commitment of the municipalities to the decision of the Minister of Interior and Municipalities:

Municipalities that abided by the decision	Municipalities didn't abide by the decision
Kobayat, Al Majdal, Ain Kafr Zabad, Taalabaya, Ablah, Jdita, Bareges	Al-Manara, Rawda, Al-Suwairi, Al-Aboudieh, Al-Muhammarah, Al-Khraibeh, Baakline, Jadidat Al-Shouf, Ain Zahla, Al-Barouk, Al-Warhaniya, Kafr Nabrahk

- Follow up the implementation of the required security and preventive measures at the airport, ports and border crossings.
- Reporting cases registered in the various districts and cases in home quarantine.

Ministry of Public Works and Transportation

Departing Flights		Arriving Flights	
Number of Flights	30	Number of Flights	32
Number of Departing Individuals	3,283	Number of Arrivals	2,646

Port	Entered			Left		
	Import	Direction	#	Export	Direction	#
Beirut	Containers	Limasol	1			
	Oil	Holand	1			
	Cattles	Qartaga	1			
	Containers	Dmeit	1			
Tripoli	Containers	Laranka	1			
Chekka				Chemicals	Spain	1
Total			5			1

General announcements

- The Ministry of Interior and Municipalities issued Decision No. 1326 on 10/21/2020 to amend Decision No. 1258 regarding the continued closure of some villages and towns due to the high number of corona infections in them, based on the recommendations of the small committee of the Committee for Follow-up of Measures and Preventive Measures of Coronavirus. The main highlights of the decision:

- Deletion of the following villages and towns from the schedule of Total Closure Resolution No. 1258 of 10/10/2020:
 - Mazraat Nahriya - Akkar district
 - Aboudieh - Akkar District
 - Ghadir - Kesrouan District
 - Haret Sakher - Kesrouan District
 - Sarba - Kesrouan District
 - Choueir and Ain Al-Sindiana - Al-Matn District
 - Sawfar - Aley District
 - Shukin - Nabatieh District
- Continuing consideration of restoring the situation to normal in villages and towns that have been closed, based on the results of the tests and the extent of commitment.
- Acting on the decision as soon as it is issued. The Governor of Mount Lebanon issued the following decisions:
 - First: Within the four southern suburb municipalities:
 - Canceling all social events of all kinds and closing all cafes, express, internet and computer games stores, children's clubs, closed clubs, GYM halls and public parks, starting from five in the morning Monday 10/19/2020 until five in the morning Monday 10/26/2020.
 - Determine work schedules for food and non-food commercial establishments, with the exception of bakeries and institutions related to the health sector and fuel and gas distribution depots, provided that health conditions and preventive and public safety measures are adhered to.
 - Strict application of preventive measures and control according to decisions issued by the Ministry of Interior and Municipalities.

- Second: Deir Qoubel town - Aley District:
 - Determine the working hours of foodstuff stores and all commercial establishments of all kinds, with the exception of bakeries, stores related to the health sector, and fuel and gas distribution depots, provided that health conditions and preventive and public safety measures are adhered to.
 - Strict application of preventive measures and public safety measures according to the decisions issued by the Ministry of Interior and Municipalities
 - Assigning the Internal Security Forces to coordinate with the Deir Qoubel municipality to implement the content of this decision and to organize the minutes according to the rules.

- Third: The closure of the first floor in the Saraya Jounieh building (the Land Registry Department and the Survey Department in Keserwan and Jbeil, and the offices of the Keserwan District Commission) and each of the Civil Planning Department in Keserwan and the Keserwan Water Distribution Department, which are located on the second floor, on Thursday and Friday 22 and 23 October 2002; Assigning the security forces to coordinate with the heads of the concerned units and the Kemqamat of Kesrwen to implement the content of this decision and to organize a record in accordance with the rules.

Note: The decisions can be found at www.drm.pcm.gov.lb

Examples of lack of adherence to safety measures

Failure of some municipalities to abide by the Ministry of Interior and Municipalities Decision No. 1025/2020 related to the closure of towns that have a high risk of the spread of the epidemic.

- Demand gatherings and demonstrations.
- Failure to comply with the preventive measures and procedures required in several stores and markets (putting on a muzzle or face mask, sterilizing hands, maintaining a safe distance).
- Non-compliance with the 50% occupancy rate in several restaurants and amusement game centers.
- Gatherings for social events.
- Failure of those in contact with confirmed cases to adhere to home isolation procedures until the results of the laboratory tests are issued.

If you feel any symptoms, call directly the hotline of the Ministry of Public Health: 1214 or 01/594459

A list of the laboratories accredited by the MoPH to conduct PCR tests

المختبرات الحكومية المؤهلة إجراء التشخيص المخبري لفيروس كورونا بطريقة الـ RT-PCR

المختبر	الموقع
مستشفى رفيق الحريري الجامعي RHUH	بيروت
مستشفى حيا الحكومي	حيا
مستشفى طرابلس الحكومي	طرابلس
مستشفى البترون الحكومي	البترون
مستشفى قنوح كسروان الحكومي (البنوار)	كسروان
مستشفى نبيه يزّي الحكومي الجامعي	البيطنة
مستشفى نينين الحكومي	نينين
مستشفى بنت جبيل الحكومي	بنت جبيل
مستشفى بعلبك الحكومي	بعلبك
مستشفى الرئيس الياقوت الهراوي الحكومي	زحلة

مختبرات المستشفيات العسكرية

Hôpital Militaire Central	المستشفى العسكري المركزي في بيروت	بيروت
---------------------------	-----------------------------------	-------

المختبرات المؤهلة لأخذ عينات "المسحات الأنفية" بطريقة Drive- thru

مختبر ميديكال دياغنوستيك تريتمانت سنتر (الحمراء) Medical Diagnostic Treatment Center (MDTC)	بيروت
مختبر ميد لاب MedLab SAL CIC ALS (الحمراء - الجفنونور)	بيروت
مختبرات عيتاني Itani Medical Laboratories (المزرعة)	بيروت
مختبر أ ب سي ABC Laboratories	الأشرفية
مختبرات معروض الطبية Mouawad Medical Laboratory	الشيح
مختبرات الشياح (د. فؤاد ربحان) Rihan Medical Center	الشيح
مختبر إكسبرت لاب Expert Lab	المنصورة
مختبر لايف لاب Life LAB	بعلبك
مستشفى الرياق Riyak Hospital	رياق

المختبرات الخاصة المؤهلة لإجراء التشخيص المخبري لفيروس كورونا بطريقة الـ RT-PCR

المختبر	الموقع
AUBMC مستشفى الجامعة الأميركية	بيروت
Hotel-Dieu de France (HDF) مستشفى أوتيل ديو الجامعي	بيروت
مختبرات رودولف ميريو (الجامعة اليسوعية – المتحف) Laboratoire Rodolphe Mérieux (Université Saint-Joseph)	بيروت
Saint-George Hospital - UMC مستشفى القديس جارجيوس الجامعي	بيروت
Makassed General Hospital مستشفى المقاصد	بيروت
LAU Medical Center - Rizk Hospital مستشفى رزق الجامعي	بيروت
Hôpital Libanais Geitawi - CHU مستشفى اللبناني الجعيتاوي الجامعي	بيروت
Hôpital Notre-Dame du Rosaire مستشفى الوردية	بيروت
Doctor 's Center مختبر مركز الأطباء	بيروت
Fontana Laboratories مختبر فونتانا (الحمرا)	بيروت
مختبر الأمن العام (العنابية)	بيروت
Laboratoire Jabre-Ghorra مختبرات جبر وغرة	بيروت
Saint Marc Medical & Diagnostic Center مختبر السان مارك	بيروت
Laboratoire Moderne (Modern Lab- Berjaoui) المختبرات الحديثة	الغبيوي
Sahel General Hospital (SGH) مستشفى الساحل	الغبيوي
مستشفى الزهراء الجامعي	الغبيوي
Al Zahraa Hospital - UMC مستشفى الرسول الأعظم	برج الراجحة
مستشفى بهمن	
Al Rassoul Al Aazam Hospital Bahman Hospital	حارة حريك
مختبر ناتيونال دياغنوستك سرفيس كومباني	
National Diagnostic Services Company (NDSC)	حارة حريك
Medical Diagnostic Center مختبر الدكتور محمود عثمان - مركز التحاليل الطبية	لرابعة
American Diagnostic Center (ADC) مختبر أميريك دياغنوستك سنتر	الجناح
Mount Lebanon Hospital مستشفى جبل لبنان	بعنا
Hôpital Saint-George – Hadath مستشفى السان جورج الحدث	بعنا
Al Hadi Laboratory مختبر الهادي	بعنا
INOIE-Liban مختبر	بعنا

Hôpital du Sacré- Coeur مستشفى قلب يسوع	الحازمية
Clinigene مختبر كلينيجان	الحازمية
Hôpital Dr.Samir Serhal مستشفى سرحال	المتن
Transmedical for Life مختبر ترانس ميدكال فور ليف	المتن
Haroun Hospital مستشفى هارون	الزلفا
Bellevue Medical Center (BMC) مستشفى بلفو	المنصورة
Hôpital Albert Haykal مستشفى هيكال	الكورة
Centre Hospitalier du Nord (CHN) مركز الشمال الإشتغاني	زغرتا
Mazloum Hospital مستشفى المظلوم	طرابلس
Al Mounla Hospital مستشفى الملا	طرابلس
Nini Hospital مستشفى النيني	طرابلس
مختبر ميكروبيولوجيا الصحة والبيئة LMSE - المعهد العالي للدكتوراه، الجامعة اللبنانية	طرابلس
CHU - Notre-Dame des Secours مستشفى سيدة المعونات الجامعي	جبل
Lab Akiki & Boulos مختبر عقيقي وبولس	جبل
Centre Médical Wakim مختبر واكيم	جونية
Ain Wazein Hospital مستشفى عين وزين	الشوف
Hammoud Hospital UMC مستشفى حمود الجامعي	سيدا
Al Karim Medical Laboratory (KML) مختبر الكريم	سيدا
Sheikh Ragheb Harb Hospital مستشفى الشيخ راجب حرب	البيتمنة
Sabbah Diagnostic Center (SDC) مختبر الصباح	البيطية
Jabal Amel Hospital مستشفى جبل عامل	صور
Mashrek Diagnostic Center (MDC) مختبر المشرق	صور
Dar Al Amal University Hospital مستشفى دار الأمل الجامعي	بعلبك
Khoury General Hospital مستشفى خوري	زحلة
Medical Care Center (MCC) مختبر ميدكال كير سنتر	زحلة