

Tuesday, December 22, 2020

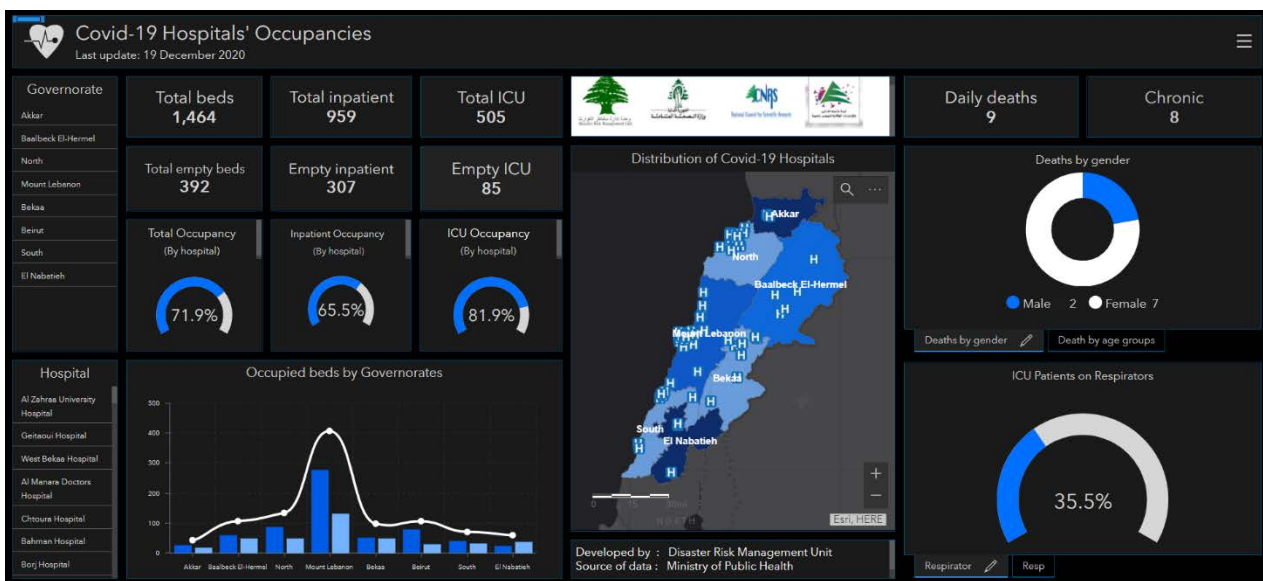
Report #279

Time Published: 07:30 PM

1,693 New Cases		160,979 Total Cases since 21.2.2020		1,311 Total Deaths		115,124 Total Recovered	
1,688 Residents	5 Expats	157,795 Residents	3,184 Expats	17 New Deaths		1,176 New Recovered	
121 Deleted Status due to its recurrence	1,914 Total Cases in the Health Sector		44,544 Total Active Cases	1,034 Hospitalized Cases			
12.8% AVG Positivity rate	7 Cases in the Health Sector	43,510 Cases in Home Isolation	141 Ventilated Cases	8 New Cases in ICU	418 Total cases in ICU	616 Mild cases	
1,756,867 COVID-19 Tests since 21.2.2020		Lebanon Status compared to the World					
1,305 COVID-19 Tests at Airport within 24 hrs.	15,324 COVID-19 tests for residents within 24 hrs.	Total Cumulative		160,979		77,999,089	
		Total Deaths		1,311		1,715,159	
		Deaths percentage		0,81%		2.1%	
		Total recoveries		115,124		54,809,147	

Ref: Ministry of Public Health Data

Occupancy rate of COVID-19 Beds and Availability



For daily information on all the details of the beds distribution availability for Covid-19 patients among all governorates and according to hospitals, kindly check the dashboard link:

Computer : <https://bit.ly/DRM-HospitalsOccupancy-PC> Phone: <https://bit.ly/DRM-HospitalsOccupancy-Mobile>

Distribution of Cases by Villages

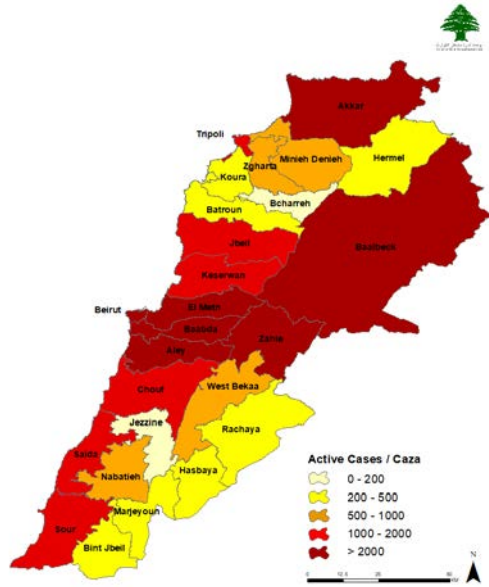
Beirut	124	Baabda	202	Maten	195	Chouf	101	Kesrwen	128	Tripoli	57
Ain Mraisseh	1	Chiyah	7	Borj Hammoud	13	Damour	1	Jounieh Sarba	8	Trablous Et Tall	3
Ras Beyrouth	1	Jnah	7	Sinn Fil	8	Naameh	2	Jounieh Kaslik	4	Trablous El Qoubbeh	8
Qreitem	2	Ouzaa	10	Jisr Bacha	1	Chhim	10	Zouk Mkayel	13	Trablous Ez Zahriyeh	1
Hamra	7	Bir Hassan	4	Jdaidet Matn	9	Mazboud	1	Haret El Mir	3	Trablous Et Tabbaneh	5
Msaibeh	4	Ghbayreh	10	Baouchriyeh	6	Chammis	1	Jounieh Ghadir	7	Trablous Jardins	1
Mar Elias	3	Ain Roummaneh	7	Daoura	6	Daraiya	2	Zouk Mosbeh	13	Mina N:1	5
Tallet Khayat	6	Furn Chebbak	5	Raouda Baouchriyeh	1	Ketermayat	1	Adonis	5	Qalamous	3
Zarif	1	Tahouit Nahr	1	Saoud Baouchriyeh	3	Aanout	3	Jounieh Haret Sakhr	6	Beddaoui	4
Mazraa	9	Haret Hreik	31	Sabtiyeh	8	Bourjein	2	Jounieh Sahel Aalma	7	Madineh Ej Jdideh	1
Borj Abou Haidar	2	Laylakeh	2	Dekouaneh	7	Barja	18	Kfar Yassine	2	Others	26
Basta Faouqa	2	Borj Brajneh	24	Antelias	5	Baassir	2	Tabarja	1	Koura	35
Tariq Jdideh	13	Mreijeh	3	Jall Dib	8	Jiyeh	2	Adma Oua Dafneh	3	Bterram	1
Ras Nabaa	3	Tahouitat Ghadir	6	Naqqach	2	Ouadi Ez Zayni	5	Safra	4	Bziza	2
Basta Tahta	5	Baabda	10	Zalqa	2	Mghayriyeh	1	Bouar	2	Bsarma	1
Rmeil	7	Hazmiyeh	16	Byaqout	4	Beit Ed Dine	1	Aaqaybeh	3	Kousba	6
Achrafiyeh	27	Hadath	13	Dbayeh	6	Semqaniyeh	2	Aajaltoun	5	Rechdibbine	2
Aadiyeh	2	Boutchay	3	Mazraat Deir Aaoukar	3	Deir Koucheh	3	Ballouneh	1	Aaba	1
Corniche Nahr	1	Kfar Chima	3	Mansouriyeh	13	Mazraat Ed Douair	1	Shayleh	8	Kfar Hata	1
Others	28	Ouadi Chahrour	3	Fanar	6	Kfar Him	3	Jaaita	1	Btouratij	1
Bcharreih	3	Bsaba	4	Ain Saadeh	6	Dmit	2	Ghazir	9	Dehdeh	1
Dimane	1	Hlaliyeh	1	Roumieh	6	Ain Zhalta	1	Kfar Hbab	3	Enfeh	3
Hasroun	2	Aabadiyeh	1	Bsalim	6	Safa	1	Borj El Ftouh	2	Ras Masqa	2
Minah Daniyeh	34	Qrayeh	1	Nabay	1	Baaqline	9	Bayader Bourj Ftouh	1	Dahr El Ain	7
Deir Aammar	2	Ras Matn	3	Rabiye	5	Gharifeh	1	Aaramoun	2	Barsa	4
Minieh	14	Jamhour Aaraiya	1	Qornet Chehouane	4	Hasrout	1	Bzoummar	1	Metrit	1
Sir Ed Daniyeh	1	Salima	3	Raboueh	6	Moukhtara	1	Daraaoun	1	Others	2
Aassoun	1	Hammana	2	Beit Ech Char	9	Ain Qani	1	Chahtoul	1	Zgahrta	46
Haql El Aazimeh	2	Qalaa	2	Dik Mehdi	3	Beqaata	2	Zaaitreh	1	Zgharta	7
Sfireh	1	Bmaryam	1	Mazraat Yachouaa	3	Ain Ouzain	1	Aazra Ouel Aazr	1	Kfar Dlaqous	3
Aassaymout	1	Falouha	1	Deir Tamich	1	Baadarane	1	Aachqout	1	Rachaine	9
Kfar Habou	1	Kornayel	2	Zakrit	1	Khreibeh	1	Faytroun	2	Qarah Bach	1
Zghartaghrieh	1	Kfar Selouane	3	Bikfaya	1	Kahlouniyeh	1	Kfar Dibiane	2	Kfar Hata	2
Aadoua	1	Others	12	Mhaiydeh	1	Zaaroun	1	Faraya	3	Ardeh	3
Terbol	1	Baalbek	41	Beit Chabab	1	Kfar Nabrakh	5	Aabri	1	Harf	3
Bakhaaoun	7	Baalbek	8	Mayasseh	1	Batloun	1	Others	1	MEjdila	3
Others	1	Douris	2	Himlaya	2	Maasser Ech Chouf	4	Jbeil	52	Aaqabeh	1
Zahleh	71	laat	1	Qornet Hamra	3	Barouk	3	Jbayl	6	laal	1
Haouch Ez Zaraanah	6	Magneh	1	Broummana	5	Others	3	Harf	1	Kfar Fou	2
Mar Mikhayel	1	Kfar Dane	1	Baabdat	1	Aleyh	121	Blat	1	Kefraya	1
El Maallaqa	11	Fekeheh	1	Beit Meri	4	El Aamrousiyeh	2	Eddeh	4	Others	10
Karak Nouh	1	Ain Baalbek	1	Dahr Es Souane	1	Hay Es Sellom	11	Aamchit	10	Batroun	20
Saydet En Najat	1	Haouarteh	1	Mrouj	2	Khaldeh	3	Halate	7	Batroun	3
Haouch El Oumara	4	Aarsal	1	Aintoura	1	Choueifat Oumara	26	Fidar	1	Kfar Aabida	2
Mar Elias	3	Laboueh	3	Bteghrine	1	Deir Qoubel	1	Jedayel	1	Chikka	4
Fourzol	1	Ain Ez Zarqa	1	Douar	1	Aaramoun	18	Nahr Ibrahim	4	Kour	1
Hazerta	1	Younine	1	Aayroun	1	Bchamoun	10	Mounsef	1	Bijdarfil	2
Qaa Er Rim	1	Deir El Ahmar	1	Zighrine	1	Blaybel	1	Ehmej	1	Aabrine	2
Niha	1	Qsarnaba	1	Kfar Aaqab	1	Bsou	4	Aabaydat	1	Rachkida	1
Ksara	5	Temnine El Faouqa	1	Baskinta	1	Aaley	11	Fatreh	2	Tannourine Et Tahta	2
Makseh	1	Beit Chama	2	Others	4	Kahhaleh	1	Kfoun	2	Tannourine El Faouqa	1
Taalabaya	4	Temnine Et Tahta	2	Tyre	41	Ghaboun	1	Ghaboun	1	Others	2
Saadnayel	2	Kfar Dabach	1	Sour	4	Ain Ej Jdideh	1	Hboub	1	Akkar	86
Qabb Elias	3	Taraya	1	Sour Er Rachidiyeh	3	Aaytat	2	Hsarat	2	Halba	3
Barr Elias	4	Talia	1	Deir Qanoun El Ain	1	Bayssour	3	Kfar Masshoun	1	Aadbil	2
Aanjar	1	Brital	3	Smaiyeh	1	Aaynab	1	Qartaba	1	Jdaidet Ej Joumeh	2
Riyaq	1	Khreibeh	1	Aaytit	1	Bsatine	2	Others	4	Daoura	1
Aali En Nahri	2	Others	5	Maarakeh	5	Rimhala	1	Bint Jbeil	8	Minyara	2
Qoussaya	2	Hermel	2	Saddiqine	3	Bouar Ed Dine	1	Aaytaroun	1	Machha	3
Raait	2	Others	2	Tayr Debba	2	Aabey	2	Rmaych	1	Deir Daloum	1
Terbol	4	Rachiaya	21	Rmadiyeh	1	Bhamdoun Ed Dayaa	1	Jmajimeh	1	Borj El Aarab	1
Others	9	Aaqabet Rachiaya	1	Toura	1	Chanay	2	Chagra	1	Kfar Harra	1
Beqaa Gharby	34	Aayha	2	Deir Qanoun En Nahr	1	Saoufar	3	Kounine	1	Baldeh	1
Machghara	4	Dahr El Ahmar	1	Aabbassiye	7	Bedghane	1	Debl	2	Beino	2
Saghbine	1	Rafid	3	Chabriha	1	Mecherfeh	1	Beit Lif	1	Aaiyat	1
Kefraya	1	Bireh	1	Borj Rahhal	4	Ramlich	2	Marjaayoun	13	Aakkar El Aatiqa	4
Aana	4	Bakka	2	Jibbain	2	Mrayjat	1	Qlaiaa	2	Tall Aabbas Ech Charqi	1
Aammiq	1	Aayta El Foukhar	3	Mansouri	1	Others	8	Khiyam	2	Khreibet Ej Jindi	1
Joubb Jannine	5	Nabi Safa	1	Others	3	Kfar Kila	1	Kfar Kila	1	Tall Meaayane	1
Kamed El Laouz	4	Others	7	Jezzine	3	Taybeh	2	Qleiaat	1	Qleiaat	1
Baaloul	2	Saïda	70	Jezzine	2	Houla	3	Aabboudiyeh	3	Aabboudiyeh	3
Ghazze	4	Saïda El Qadimeh	8	Mlikh	1	Meiss Ej Jabal	1	Bebnine	6	Bebnine	6
Soultan Yaaqoub	1	Saïda Mar Nqoula	1	Nabatiyeh	44	Majdel Selm	1	Mhammara	1	Majdel Selm	1
Qaraaoun	1	Hlaliyeh	2	Nabatiyeh Et Tahta	2	Blida	1	Nahr El Bared	1	Nahr El Bared	1
Yaaqoub Aradi	1	Qiyaa	1	Zibdine	4	Hasbaiya	8	Berqayel	4	Berqayel	4
Haouch El Harimeh	2	Haret Saïda	2	Kfar Roummane	3	Hasbaiya	3	Bzal	1	Bzal	1
Marj	2	Miyeh Ou Miyeh	1	Habbouch	1	Hebbariyeh	1	Dinbou	1	Dinbou	1
Others	1	Ain El Heloueh	3	Kfar Tibnit	1	Chebaa	2	Beit Younes	1	Beit Younes	1
		Majdelyoun	2	Kfour	4	Marj Ez Zouhour	1	Houaich	2	Houaich	2
		Aabra	3	Aarab Salim	2	Others	1	Hra	1	Hra	1
		Ain Ed Delb	1	Houmine Et Tahta	1			Beit Ayoub	2	Beit Ayoub	2
		Ghaziye	8	Deir Ez Zahrani	3			Qarqaf	2	Qarqaf	2
		Qennarit	1	Harouf	3			Fnaydeq	7	Fnaydeq	7
		Tanbourit	1	Douair	1			Majdala	2	Majdala	2
		Kharayeb	1	Mayfadoun	1			Rahbeh	1	Rahbeh	1
		Aadloun	1	Aabba	2			Kouachra	1	Kouachra	1
		Babliyeh	1	Insar	1			Berbara	1	Berbara	1
		Sarafand	17	Qaaqaiyet Ej Jisr	5			Ain Tinta	1	Ain Tinta	1
		Qaaqaiyet Snaoubar	4	Kfar Sir	5			Machta Hammoud	2	Machta Hammoud	2
		Bissariyeh	3	Yohmor	1			Douair Aadouiyeh	1	Douair Aadouiyeh	1
		Saksakiyeh	1	Sir El Gharbiyeh	2			Ouadi Khaled	1	Ouadi Khaled	1
		Bnaafoul	1	Others	2			Dabadeb	1	Dabadeb	1
		Aanqoun	2					Hichi	1	Hichi	1
		Others	5					Akroum	5	Akroum	5
								Others	9	Others	9
								Others	133	Others	133

All reports and related decisions can be found at: <http://drm.pcm.gov.lb>

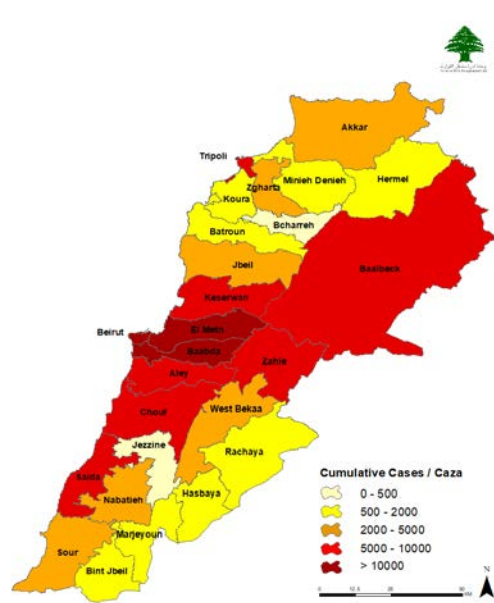
Or social media @DRM_Lebanon

Distribution of Active and Cumulative Cases

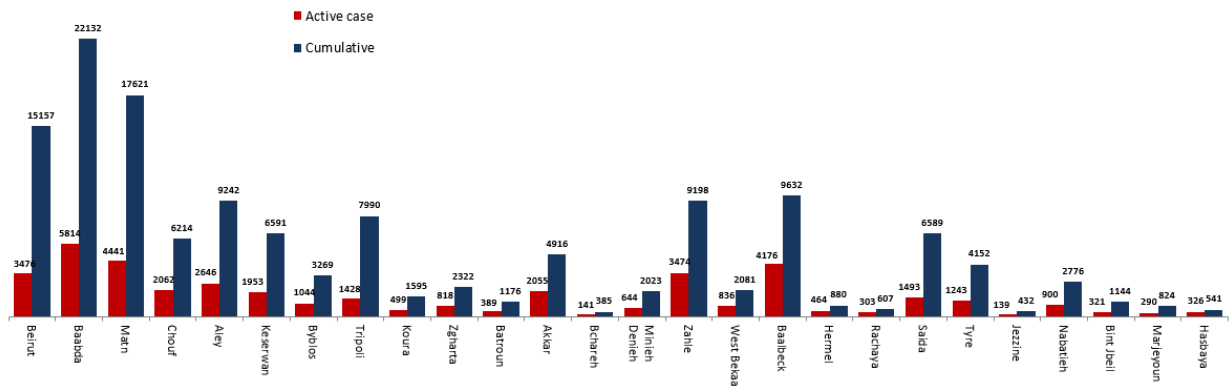
Distribution of Active Cases



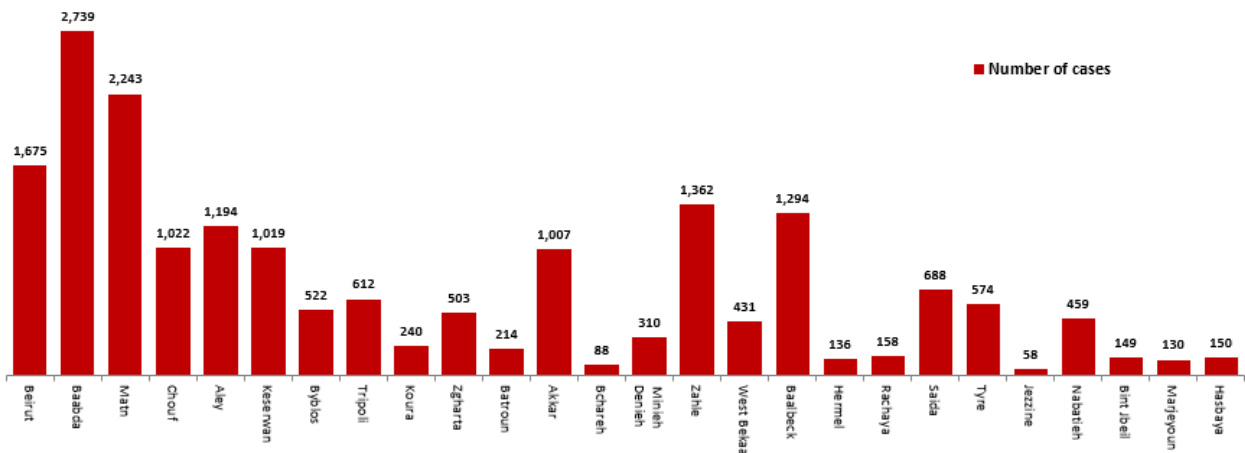
Distribution of Cumulative Cases



Number of Cases by Location



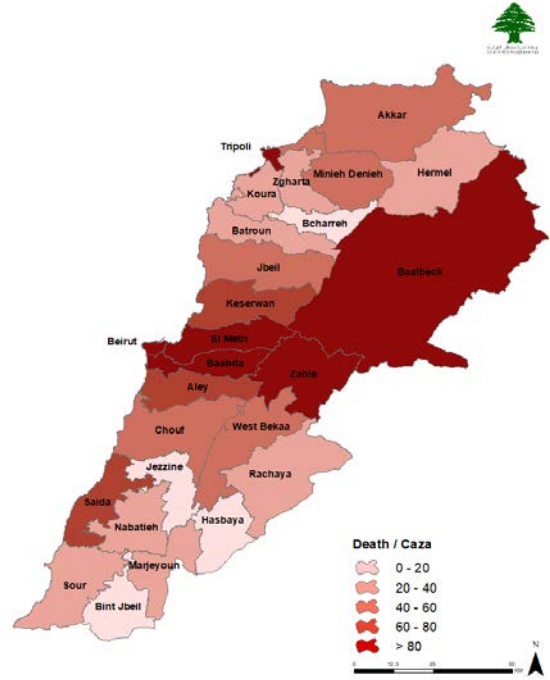
Number of cumulative cases for the last 14 days



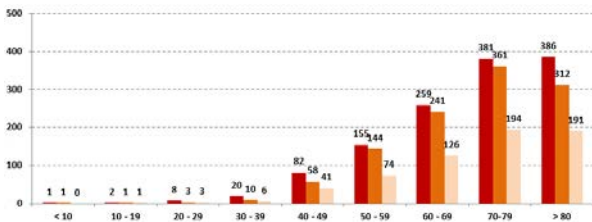
Distribution of Death Cases

Distribution of deaths during the past 24 hours

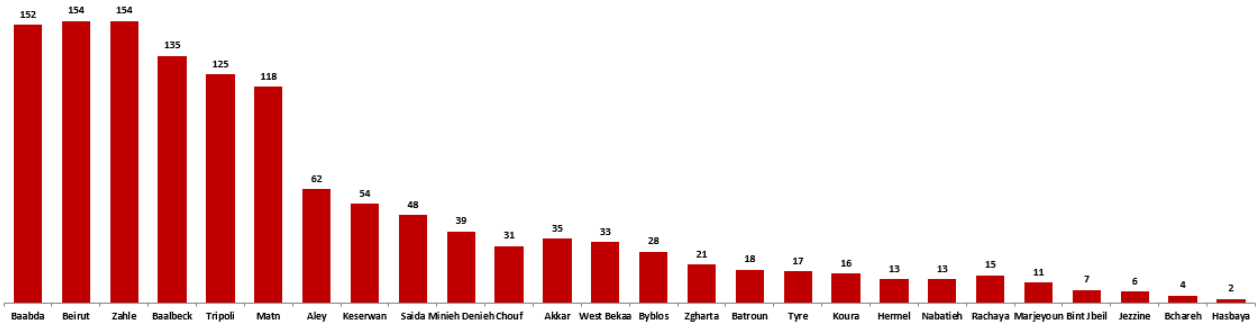
Hospital	Residence	Gender	Age	Chronic
Bahman Hospital	Baabda	Female	84	Yes
Baabda Gov Hospital	Matn	Male	82	Yes
Dar Hekmeh Hospital	Baalbek	Female	67	Yes
Rizk Hospital	Beirut	Female	61	Yes
Ser Daneih Hospital	Minieh Daneih	Male	72	Yes
Al Rayan Hospital	Zahleh	Male	72	Yes
Libano Français	Zahleh	Male	76	Yes
Libano Français	Zahleh	Male	72	Yes
Libano Français	Zahleh	Male	90	Yes
Libano Français	Zahleh	Male	98	Yes
Rizk Hospital	Matn	Male	79	Yes
Dar Amal Hospital	Baalbek	Male	72	Yes
Chtoura Hospital	Baalbek	Male	83	Yes
Beqaa Hospital	Zahleh	Male	76	Yes
Elias Herawi Hosp	Zahleh	Female	90	Yes
Makkased Hospital	Beirut	Male	50	Yes
Makkased Hospital	Beqaa Gharby	Male	60	Yes



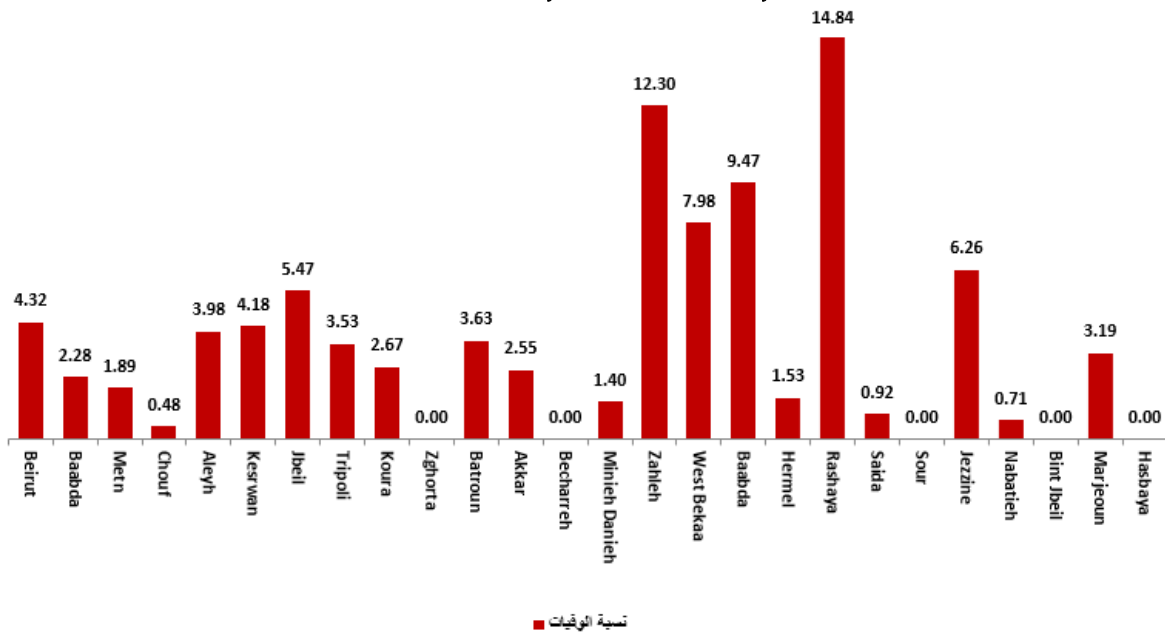
Distribution of deaths by Age Groups



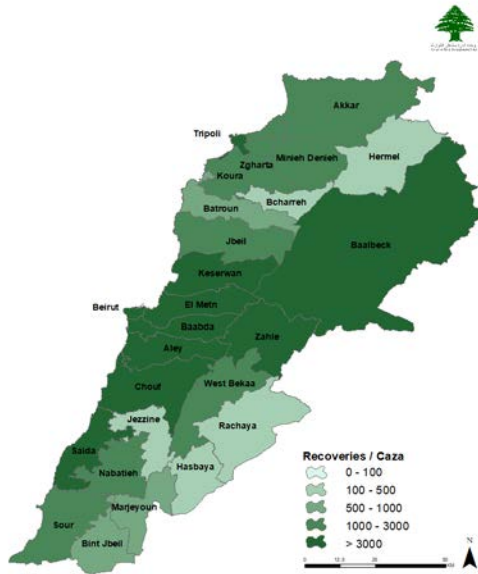
Distribution of deaths by Governorates



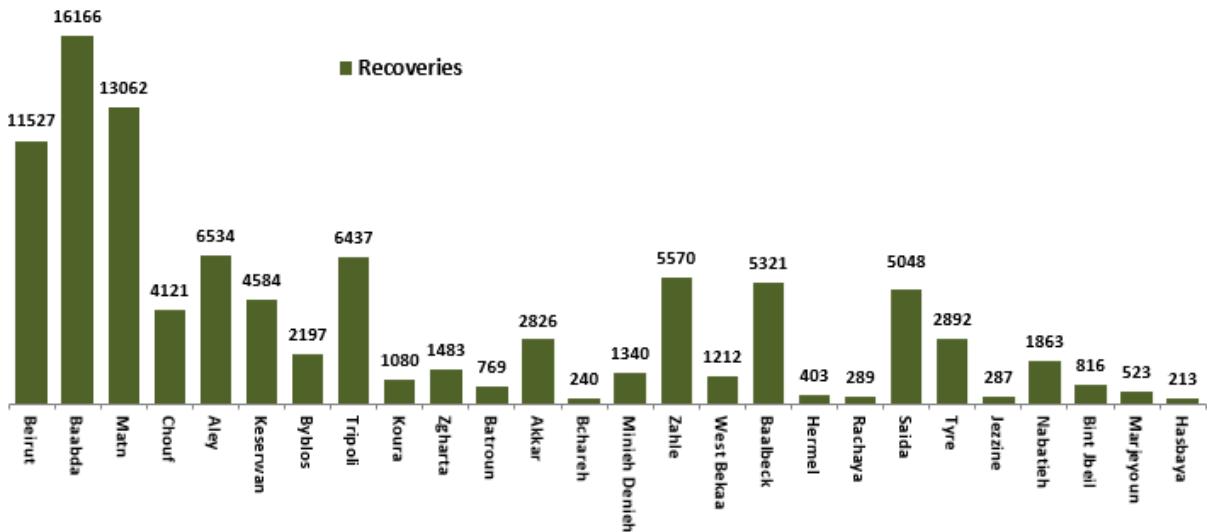
Distribution of mortality rate for the last 14 days



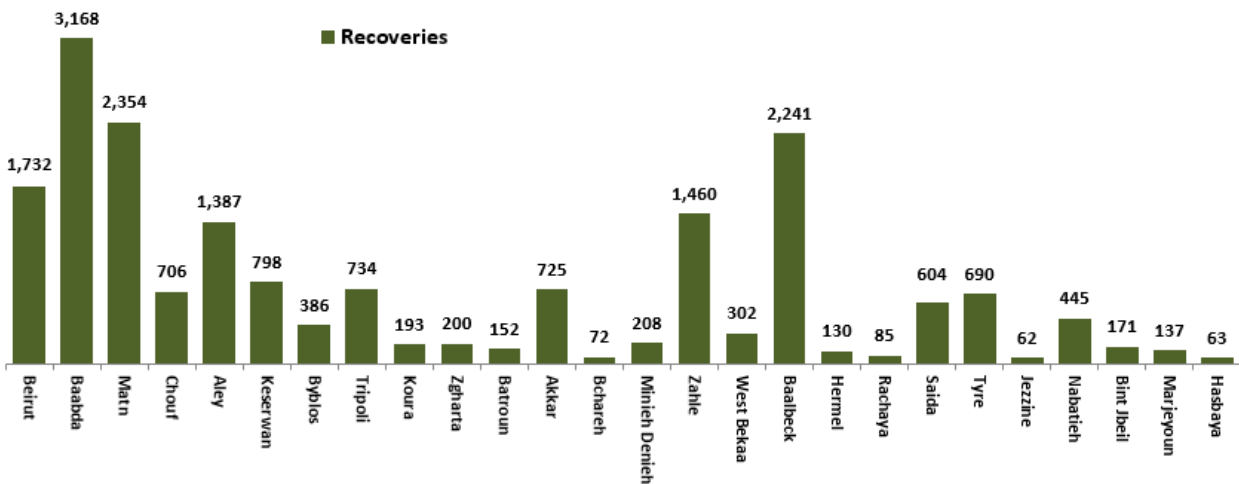
Distribution of Recoveries



Distribution of Recoveries per Casa



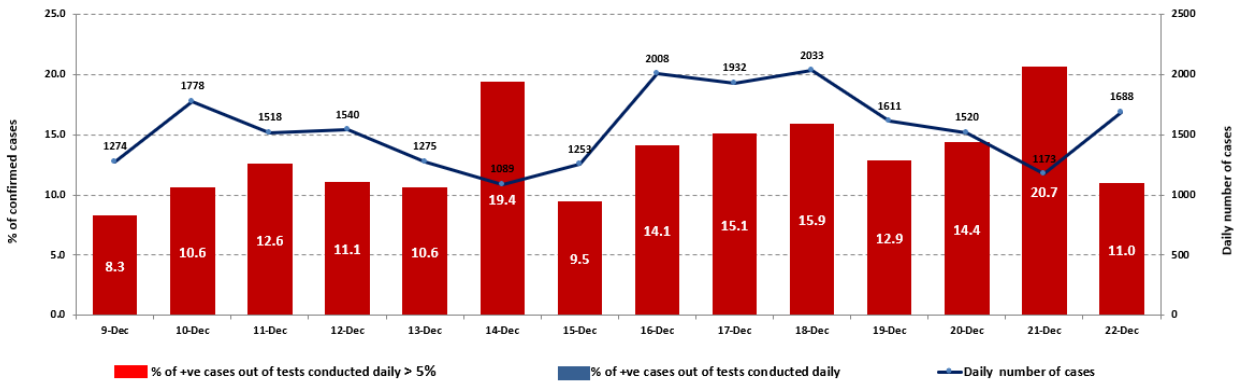
Distribution of Recoveries per Casa in the last 14 days



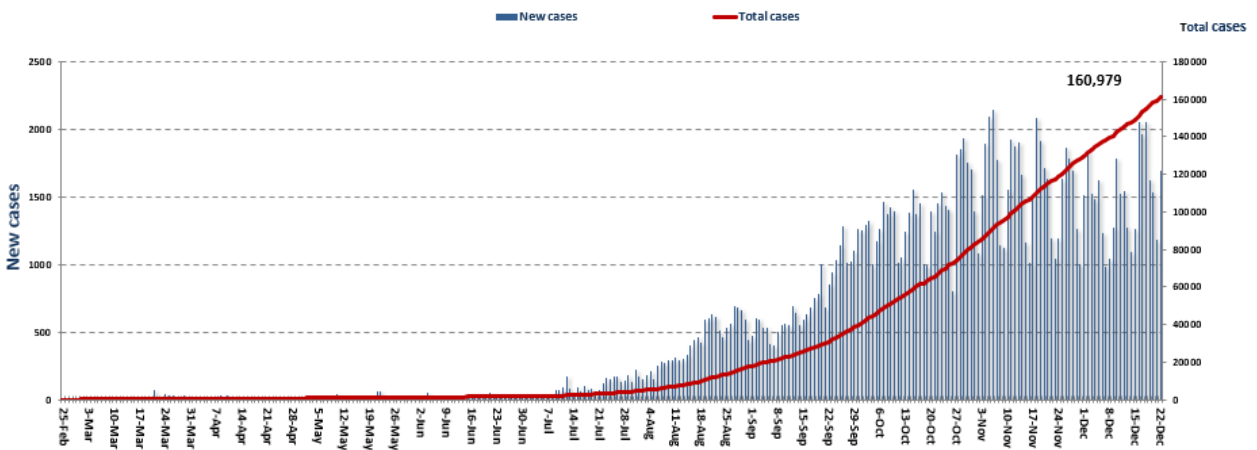
All reports and related decisions can be found at: <http://drm.pcm.gov.lb>

Or social media @DRM_Lebanon

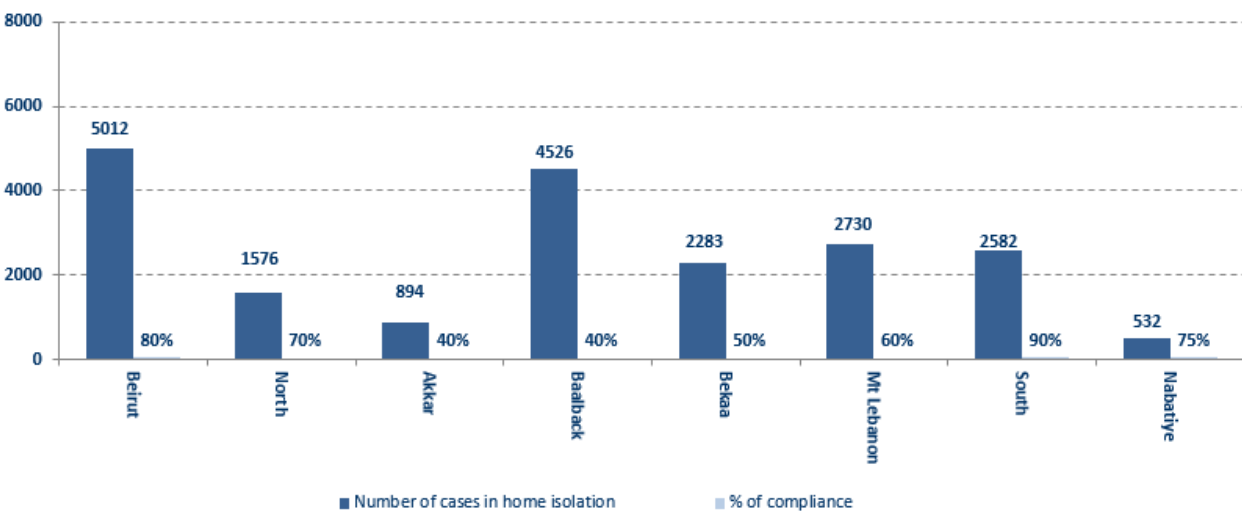
The percentage of positive cases out of the number of daily tests (09 Dec– 22 Dec,2020)



Cumulative cases per day



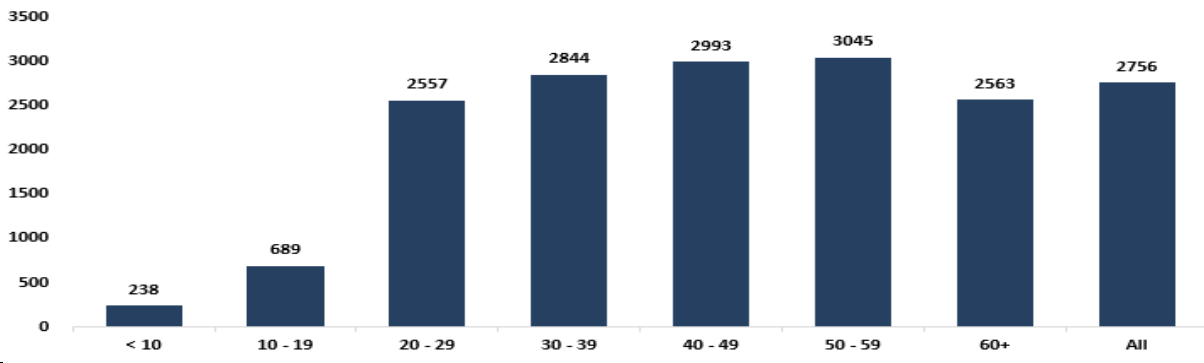
Number of individuals in home isolation and percentage of commitment to isolation



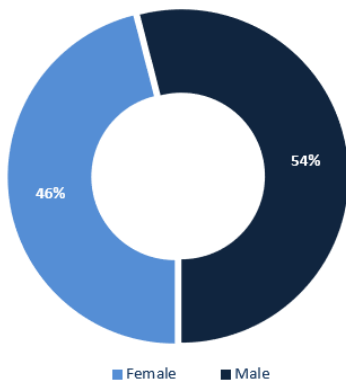
All reports and related decisions can be found at: <http://drm.pcm.gov.lb>

Or social media @DRM_Lebanon

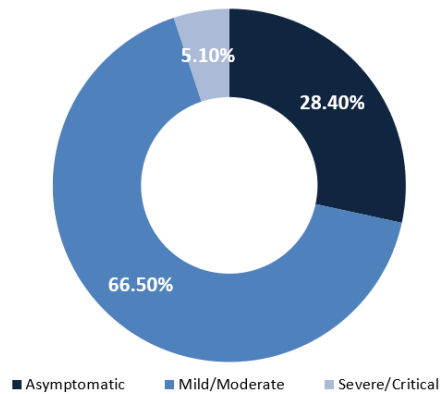
Age-Specific Cumulative Incidence rate (/100000)



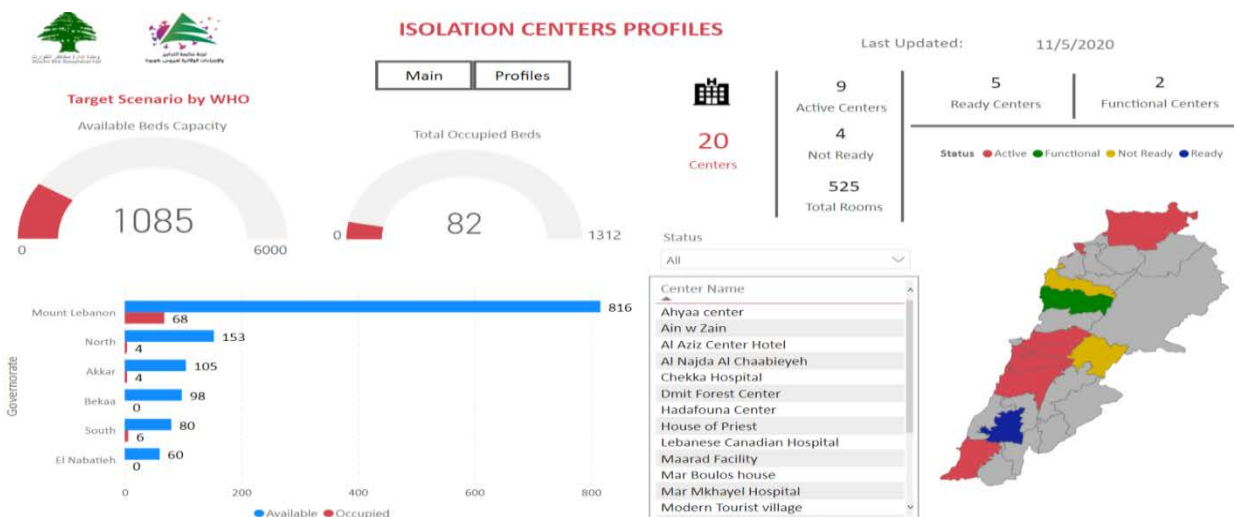
Distribution of cases by gender



Distribution of cases by Status



Occupancy rate of isolation centers for cases infected with Corona virus



For more information about the isolation centers' distribution and the percentage of their occupancy, enter the following link: <http://bit.ly/DRM-IsolationCentersProfiles>

Note: These centers have been equipped in cooperation with the National Committee for Follow-up of Preventive Measures and Measures to Confront Coronavirus, Governors and Municipalities, the United Nations Development Program, the World Health Organization, UNICEF, the Ministry of Public Health, the Syndicate of Nurses in Lebanon, and the Syndicate of Specialists in Social Work.

All reports and related decisions can be found at: <http://drm.pcm.gov.lb>

Or social media @DRM_Lebanon

Decisions and actions taken – 12/22/2020

Ministry of Public Health

- The Minister of Health announced that scientific and research laboratories have been contacted in order to conduct DNA sequencing of people infected with Coronavirus to determine whether the virus is of the type circulating about a year ago or from the new strain, and he pointed out that it is not yet likely that there will be an effect of the new strain. On responding to vaccines, adding that the vaccine that Lebanon has booked from Pfizer is effective, pending subsequent scientific data about.
- The Ministry of Public Health reported that PCR examinations had been completed for flights that arrived in Beirut and were conducted at the airport on 18 and 19 December 2020, when eleven (11) positive cases were recorded, distributed over the following flights:

Cases	Flight Number	Companies	Direction
2020/12/18			
3	826	Turkish Airlines	Istanbul
2020/12/19			
3	406	Ethopian Airways	Adis Abab
1	216	MEA	Brussels
1	1313	Iraqi Airways	Baghdad
1	301	Iraqi Airways	Baghdad
1	268	MEA	Istanbul
1	201	Q6	Damscus
11			Total

Lebanese Red Cross

Cases transferred to the hospital	10,800 (69 New)	Ambulance centers	48	Number of additional ambulance centers ready to respond	60,559 (129 New)	Number of PCR tests transferred to laboratories	240,965
Number of being benefitting from awareness sessions	122,917 (307 New)	total number of respondents	8,907	Number of trained paramedics	1,498	Number of volunteers trained to transfer PCR tests	166
Number of trained managers for isolation centers	8,879	total LRC volunteers for covid 19	550	Number of university volunteers trained to conduct awareness sessions	321	The number of university volunteers trained to follow up on prevention measures in companies and institutions	967
Number of prisons that has been disinfected	1,056 (4 New)	Total distributed posters, brochures, and flyers on covid19 prevention	1,263,464	Number of distributed equipment	265,415 (1162 New)	Number of beneficiaries from educational electronic platforms COVID-19	4,823

Lebanese Army Forces

- The army units continue to distribute social aid (400,000 Lebanese pounds) to families with limited income in all Lebanese territories.
- Distributing food aid in various Lebanese regions through the CIMIC Office.
- Establishing circumstantial barriers in various regions and supporting the Internal Security Forces in implementing the general closure decision in the country

All reports and related decisions can be found at: <http://drm.pcm.gov.lb>

Or social media @DRM_Lebanon

General Directorate of Internal Security Forces

- The Internal Security Forces in all governorates and regional directorates organized patrols and circumstantial checkpoints
- The minutes that were written against the violators of the decisions of the general mobilization during the past 24 hours were distributed as follows:

The number of seizure records during the past 24 hours					The total number of records since 03/08/2020		
Written records of cars that violate curfew decision					0		
Written records of violating institutions					48	Beirut	38,597
Written records of persons violating the decision to wear a mask					101	Mount Leb	41,889
Total					149	Beqaa	16,376
						North	13,465
Beirut	Mount Leb	Beqaa	North	South		South	13,310
94	54	0	1	0		Total	123,637

General Directorate of State Security

- Reporting the number of new positive cases in the various governorates and districts, and the cases in home quarantine.
- Follow up the procedures performed by medical teams at the arrival's examination centers at the airport and at border crossings.

General Directorate of General Security

- Carrying out patrols in the various governorates, establishing fixed and mobile control points to follow up the implementation of the general mobilization decision, alerting citizens to adhere to preventive measures, and alerting stores and commercial establishments to the necessity to regulate customer entry roles to prevent overcrowding and maintain social distancing.
- Reporting the closure of the Land Registry and Survey Department in Rashaya after it was found that there were injuries among the employees, based on the directives of the Governor of the Bekaa and the decision of the Mayor of Rachaya, from 12/21/2020 until 12/24/2020 inclusive, provided that the employees in the two departments are committed Those mentioned in the home quarantine for the duration of the closure until the results of their laboratory tests are issued.
- Notification of the percentage of compliance with the general mobilization decision in the governorates, which came as follows within the past 24 hours:

Beirut	South	North	Akkar	Beqaa	Nabatiyeh	Baalbek Hermel	Mount Leb
60%	65%	50%	65%	65%	70%	30%	50%

Ministry of Public Works and Transportation

Beirut RaficHarriri International Airport:

Departing Flights		Arriving Flights	
Number of Flights	50	Number of Flights	49
Number of Departing Individuals	4,262	Number of Arrivals	6,216

Ports:

Port	Left			Entered		
	Export	Direction	#	Import	Direction	#
Beirut	Containers	Malta	1			
	Containers	Russia	1			
	Containers	Limassoul	1			
Tripoli	Diesel	Limassoul	1	Metal	Egypt	2
	Corn	Romania	1	Blank	Turkey	2
	Containers	Limassoul	1	Blank	Syria	1
Jeyyeh	Fuel Oil	Russia	1			
	Construction Materials	Greece	1			
Saida	Metals	Tripoli	1			
Zahrani	Gas Oil	Greece	1			
	Liquid Gas	Italy	1			
Total			11			5

All reports and related decisions can be found at: <http://drm.pcm.gov.lb>

Or social media @DRM_Lebanon

The Committee for the Follow-up of Preventive Measures and Measures to Confront the Coronavirus, in its meeting held today, Monday, 12/21/2020, issued a recommendation regarding the measures to be taken in light of the emergence of the new strain of Coronavirus in the United Kingdom based on the scientific data available to its history and based on the possibility of the spread of this strain. New in several European countries, as it was decided that the Ministry of Public Health would conduct a PCR examination for all arrivals from the United Kingdom to Lebanon upon their arrival at Beirut International Airport at the expense of the Middle East Airlines, with compulsory those arrivals to perform a PCR examination for the second time 72 hours after entering The Lebanese territories are in one of the laboratories approved by the Ministry of Public Health, provided that the Ministry of Public Health shall provide the Ministry of Interior and Municipalities with all information related to the addresses of these arrivals so that they can be traced, and that positive cases are quarantined when the results appear in the approved quarantine centers until an examination is conducted that determines the strain of the virus Infected with it.

- The Ministry of Interior and Municipalities, based on the recommendations of the Committee for Follow-up of Preventive Measures and Procedures to Confront the Coronavirus, **issued Decision No. 1612 of 12/21/2020** regarding the amendment of preventive measures and procedures to confront the Corona epidemic from 12/23/2020 until 12/31/2020. Most prominent in it:
- Determine the times of entry and entry into the streets between three o'clock and five in the morning, starting from five o'clock in the morning on Wednesday, corresponding to 12/23/2020, until five o'clock in the morning of Friday, corresponding to 1/1/2021.
- Transport instructions for private and public vehicles and trucks.
- The opening times of the public sector and the economic and commercial sectors in all Lebanese regions according to the schedule included in the decision, with organizing the shift in work in line with the times of movement, adherence to the number allowed in each sector and the approval of the job card to prove the identity of the excluded persons during their commute to and from their work.
- Allowing the holding of various social events with a capacity of 50%.
- Allow the opening of bars, cabarets, and nightclubs according to the conditions for the operation of restaurants only until a different decision is issued, while reducing the capacity of customers to 50% after emptying the chairs and tables, and organizing a scheme signed by the Ministry of Tourism in order to secure social distancing, so that the plan takes into account the preservation of A distance of at least two meters between the tables. A maximum of eight people sit at each table. Not allocating a common space for dancing and filling out the "pledge and commitment form" and submitting it to the Ministry of Tourism.
- Coordination with the religious authorities regarding religious events and prayers in places of worship.
- Limiting the decision to open or close educational institutions and administrative units in all towns and villages to the Minister of Education and Higher Education.
- General provisions related to the number of people traveling by specific public and private means of transport, public prevention and safety measures, mandatory wearing of a mask, personal hygiene and especially hand washing, permanent sterilization and not overcrowding while maintaining distances between people and organizing roles on payment boxes
- Exclusions related to movement and curfews (military personnel, health sector employees, workers in the diplomatic corps, media professionals, port employees, maritime agencies and the airport, in addition to the Electricity of Lebanon and Kadisha, water establishments and their service providers, mill workers, sweeping companies, waste collection and transportation, military vehicles, civil defense mechanisms, firefighting, municipal police and the cross) The Lebanese Red Army, ambulances and medical apparatus, the diplomatic corps, the United Nations, the media and the media, the lifts and the vehicles designated for transporting and towing cars, the vehicles designated for people with special needs and those with a card from the Ministry of Social Affairs, arrivals and departures, and those who take them to and from the airport, provided they have a copy of the travel ticket.
- The tasks of governors, mayors and district officials in implementing the decision.
- The units of the General Directorate of Internal Security are strict in implementing this decision.

- The General Directorate of Civil Aviation at the Ministry of Public Works and Transport issued Circular No. 62/2 dated 12/21/2020 to all airlines and ground services companies operating at Rafic Hariri International Airport in Beirut regarding procedures for passengers arriving from Britain, according to which the United Kingdom was added to Each of Iraq, Syria, Turkey and all African countries, where all arrivals from them (not including passengers transiting through the United Kingdom) are subjected to a PCR examination at the airport upon their arrival, provided that passengers coming from the United Kingdom adhere to home quarantine until they are informed of the result of the second examination that takes place after 72 hours From the date of their entry into the Lebanese territories.

- The Ministry of Interior and Municipalities issued Decision No. 1611 on 12/20/2020 regarding the extension of work on the content of Resolution No. 1556 regarding amending measures and procedures to confront the Corona epidemic, until five in the morning on Wednesday, December 23, 2020.

Examples of lack of adherence to safety measures

- Violations of the Ministry of Interior Decision No. 1432: promenade on the sea corniche, violations of authorized and single motor vehicle traffic, and violations of commercial establishments and stores that did not adhere to the decision.
- Failure to comply with the preventive measures and procedures required in a number of stores and markets (putting on a mask or face mask, sterilizing hands, maintaining a safe distance).
- Failure of those in contact with confirmed cases to adhere to home isolation procedures until the results of the laboratory tests are issued.

If you feel any symptoms, directly call the hotline of the Ministry of Public Health: 1214 or 01/59445

Laboratories that did not comply with the procedures approved by the MoPH About the information required to be recorded for infected cases within the past 24 hours

Laboratories that did not specify the Governorate	
Laboratory/Hospitals	Cases
BDL003-Laboratoire Inovie / Fayyadie	98
BDH505-Rafic Hariri University hospital	11
BRH636-Hospital LAU Medical Center / Rizk	8
BDH558-Hospital Saint Georges Hadath	2
BDL002-Hadi Laboratory/ Haret Hreik	2
BRH610-Hospital American university	2
BRH637- Haddad des Soeurs du Rosaire	2
BRL009 - Fontana Laboratories	2
ZHH225-Hospital Mayas / Zahleh	2
BDL006 - Beirut International Airport	1
BRH639-Hospital Saint Georges Orthodoxe	1
JBH541-Hospital Notre Dame de Secours	1
BDL003-Laboratoire Inovie / Fayyadie	98

Number of positive cases without specifying the place of residence	
Laboratory/Hospitals	Cases
BDL003-Laboratoire Inovie / Fayyadie	101
BDH505-Rafic Hariri University hospital	11
BDH562-Hospital Mont liban	10
BRH636-Hospital LAU Medical Center / Rizk	8
ZHH225-Hospital Mayas / Zahleh	4
BDH558-Hospital Saint Georges Hadath	3
BRH639-Hospital Saint Georges Orthodoxe	3
JBL001-Laboratoire Akiki et Boulos	3
BDL002-Hadi Laboratory/ Haret Hreik	2
BRH610-Hospital American university	2
BRH637- Haddad des Soeurs du Rosaire	2
BRL009 - Fontana Laboratories	2
SDH418-Hospital Hammoud / Saida	2
BDL006 - Beirut International Airport	1
BRH630-Hospital Geitawi	1
CHH511-Hospital Ain wa Zain	1
JBH541-Hospital Notre Dame de Secours	1
ZHH202-Hospital Elias Hraoui Gouvernemental	1
BDL003-Laboratoire Inovie / Fayyadie	101

Number of positive cases without a phone number	
Laboratory/Hospitals	Cases
BDL002-Hadi Laboratory/ Haret Hreik	1
BDH558-Hospital Saint Georges Hadath	3

A list of the laboratories accredited by the MoPH to conduct PCR tests

Governmental Labs

المختبر	الموقع
RHUH	مستشفى رفيق الحريري الجامعي
Halba Governmental	مستشفى حلبا الحكومي
Tripoli Governmental	مستشفى طرابلس الحكومي
Batroun Governmental	مستشفى البترون الحكومي
Fetouh Keserwan	مستشفى فتوح كسروان الحكومي (البوار)
Nabih Berri Hosp	مستشفى نبيه برّي الحكومي الجامعي
Tebnine Governmental	مستشفى تبنين الحكومي
BintJbeil Governmental	مستشفى بنت جبيل الحكومي
Baalback Governmental	مستشفى بعلبك الحكومي
Elias Herrawi Governmental	مستشفى الرئيس الياس الهراوي الحكومي

Private Labs

المختبر	الموقع
AUBMC	مستشفى الجامعة الأميركية
Hôtel Dieu de France	مستشفى أوتيل ديو الجامعي
Laboratoires Rodolphe Mérieux (Université Saint-Joseph)	مختبرات رودولف ميرييو (الجامعة اليسوعية – المتحف)
George-Saint UMC Hospital	مستشفى القديس جاورجيوس الجامعي
General Makassed Hospital	مستشفى المقاصد
LAU Medical Center - Rizk Hospital	مستشفى رزق الجامعي
CHU - GeitawiLibanais Hospital	مستشفى اللبناني الجعيتاوي الجامعي
Hôpital Notre-Dame du Rosaire	مستشفى الوردية
Doctors' Center	مختبر مركز الأطباء
Fontana Laboratories	مختبر فونتانا (الحمرا)
General Security Laboratories	مختبر الأمن العام (العدلية)
Ghorra-Jabre Laboratories	مختبرات جبر وعرّة
Saint Marc Medical & Diagnostic Center	مختبر السانمارك
Laboratories HML	مختبرات حداد
Laboratoire Moderne (Modern Lab.- Berjaoui)	المختبرات الحديثة
Sahel General Hospital (SGH)	مستشفى الساحل
Al Zahraa Hospital	مستشفى الزهراء الجامعي
	مركز النقاء الطبي
Al Rassoul Al Aazam Hospital	مستشفى الرسول الأعظم
Bahman Hospital	مستشفى بهمن
National Diagnostic Services Company (NDSC)	مختبر ناشيونال دياغنوستك سيرفس كومباني
Center Diagnostic Medical	مختبر الدكتور محمود عثمان - مركز التحاليل الطبية
ADC (Center Diagnostic American)	مختبر أميركن دياغنوستك سنتر
Mount Lebanon Hospital	مستشفى جبل لبنان
Hadath – George-Saint Hôpital	مستشفى السان جورج الحدّث
Laboratory Al Hadi	مختبر الهادي
INOVIE	مختبر-Liban
Sacré - Coeur Hôpital	مستشفى قلب يسوع
Clinigene	مختبر كلينيجان
Dr. Samir Serhal Hospital	مستشفى سرحال
Life for Trans medical	مختبر ترانسيميديكال فور ليف
	مختبرات سان ميشال للتحاليل الطبية

All reports and related decisions can be found at: <http://drm.pcm.gov.lb>

Or social media @DRM_Lebanon

	مختبر مركز الشرق الأوسط الصحي ش.م.ل	المتن
Haroun Hospital	مستشفى هارون	الزلقا
Bellevue Medical Center (BMC)	مستشفى بلفو	المنصورية
Haykal Albert Hôpital	مستشفى هيكل	الكورة
Centre Hospitalier du Nord (CHN)	مركز الشمال الاستشفائي	زغرتا
Mazloun Hospital	مستشفى المظلوم	طرابلس
Al Mounla Hospital	مستشفى المنلا	طرابلس
Nini Hospital	مستشفى النيني	طرابلس
LMSE	مختبر ميكروبيولوجيا الصحة والبيئة، المعهد العالي للدكتوراه، الجامعة اللبنانية	طرابلس
Secours des Dame-Notre – CHU	مستشفى سيدة المعونات الجامعي	جبيل
Boulos & Akiki Lab	مختبر عقيلي وبولس	جبيل
Wakim Centre Médical	مختبر واكيم	جونية
Hospital Wzein Ain	مستشفى عين وزين	الشوف
UMC Hospital Hammoud	مستشفى حمود الجامعي	صيدا
Al Karim Medical Laboratory (KML)	مختبر الكريم	صيدا
Hospital HarbRagheb Sheikh	مستشفى الشيخ راغب حرب	النبطية
SDC (Center Diagnostic Sabbah)	مختبر الصباح	النبطية
Jabal Amel Hospital	مستشفى جبل عامل	صور
Mashrek Diagnostic Center (MDC)	مختبر المشرق	صور
Hospital University Dar Al Amal	مستشفى دار الأمل الجامعي	بعلبك
	مختبرات العناية الطبية	بعلبك
	مختبرات العناية الطبية	اللبوة
Hospital General Khoury	مستشفى خوري	زحلة
MCC (Center Care Medical)	مختبر ميديكال كير سنتر	زحلة

مختبرات المستشفيات العسكرية

Hôpital Central Militaire	المستشفى العسكري المركزي في بيروت	بيروت
---------------------------	-----------------------------------	-------

المختبرات المؤهلة لأخذ عينات "المسحات الأنفية" بطريقة Drive-Thru

Medical Diagnostic Treatment Center (MDTC)	مختبر ميديكال دياغنوستك تريمانت سنتر (الحمراء)	بيروت
ALS CIC SAL Med-Lab	مختبر ميد لاب الحمراء – الجفینور	بيروت
Itani Medical Laboratories	مختبرات عيتاني	بيروت
ABC Laboratories	مختبر أ ب سي	الأشرفية
Mouawad Medical Laboratory	مختبرات معوض الطبية	الشياح
Rihan Medical Center	مختبرات الشياح (د. فؤاد ریحان)	الشياح
Lab Expert	مختبر إكسبرت لاب	المنصورية
LAB Life	مختبر لايف لاب	بعلبك
Rayyak Hospital	مستشفى رياق	رياق