



# Lebanon National Operations Room Daily Report on COVID-19

Saturday, August 22, 2020

Report #157

Time Published: 23:00 PM

**12191**  
Total registered cases since Feb.21

**1282** **10909**  
Leb Expats Locals

**611**  
New Cases

**15** **596**  
Leb Expats Locals

**445,074**  
Conducted PCR tests in labs since Feb.21

**4401**  
PCR tests conducted tests for locals in the last 24 hrs (in labs)

**1439**  
PCR tests conducted tests in airport in the past 24 hrs

**121**  
Deaths

**3346**  
Recoveries

**488**  
Cases registered among medical staff

**16**  
Cases registered among medical staff in the past 24 hrs

**8724**  
(Active Cases)

**8458**  
In home Isolation

**266**  
Currently hospitalized

**0**  
Mild Cases in the Past 24 hrs

**195**  
Cumulative Mild Cases

**0**  
In ICU in the past 24 hrs

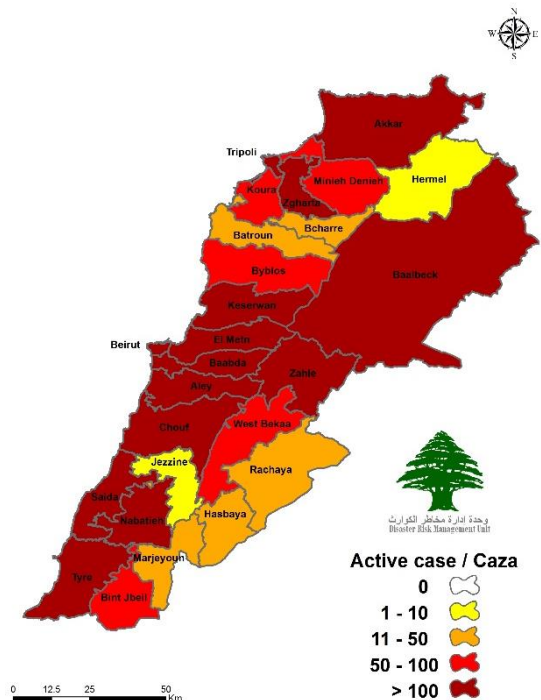
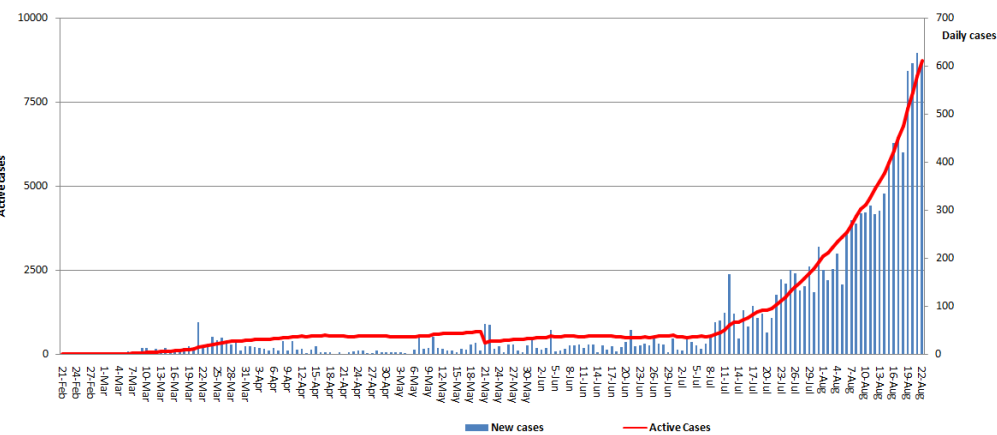
**71**  
Cumulative In ICU

|                        | Lebanon | Internationally |
|------------------------|---------|-----------------|
| Total registered cases | 12,191  | 23,254,010      |
| Total deaths           | 121     | 805,708         |
| Percentage of deaths   | 0.99%   | 3.46%           |
| Number of recoveries   | 3346    | 15,807,913      |

\*The Above data was last updated at 10:00 PM

## Number of Cases by Location

- 2697 case is Under investigation



Active case / Caza

- 0
- 1 - 10
- 11 - 50
- 50 - 100
- > 100

## The daily distribution of positive cases according to districts and towns

| Beirut           | Cases |
|------------------|-------|
| Ain Mraisseh     | 3     |
| Ras Beyrouth     | 6     |
| Qreitem          | 3     |
| Raoucheh         | 1     |
| Hamra            | 9     |
| Msaitbeh         | 4     |
| Mar Elias        | 2     |
| Tallet Khayat    | 2     |
| Zarif            | 3     |
| Mazraa           | 6     |
| Borj Abou Haidar | 8     |
| Basta Faouqa     | 4     |
| Tariq Jdideh     | 19    |
| Ras Nabaa        | 11    |
| Basta Tahta      | 4     |
| Rmeil            | 2     |
| Achrafiyeh       | 12    |
| Other            | 2     |
| Baabda           | Cases |
| Ain Roummaneh    | 4     |
| Baabda           | 2     |
| Bir Hassan       | 2     |
| Borj Brajneeh    | 9     |
| Bsaba            | 2     |
| Chiyah           | 6     |
| Fayadiyeh        | 1     |
| Furn Chebbak     | 3     |
| Ghbayreh         | 5     |
| Hadath           | 16    |
| Haret Hreik      | 7     |
| Hazmiyeh         | 1     |
| Jnah             | 3     |
| Laylakeh         | 1     |
| Mreijeh          | 3     |
| Ouadi Chahrour   | 1     |
| Ouzaaï           | 3     |
| Tahouitat Ghadir | 3     |
| Chouf            | Cases |
| Barja            | 4     |
| Chhim            | 3     |
| Haret Naameh     | 1     |
| Jadra            | 2     |
| Naameh           | 1     |
| Ouardaniyeh      | 1     |
| Rmeileh          | 2     |
| Sibline          | 1     |
| Koura            | Cases |
| Dahr Ain         | 1     |
| Kefraïya         | 1     |
| Batroun          | Cases |
| Chikka           | 1     |
| Kfar Aabida      | 1     |
| Nabatieh         | Cases |
| Insar            | 1     |
| Roumine          | 1     |
| Bint Jbeil       | Cases |
| Kafra            | 1     |

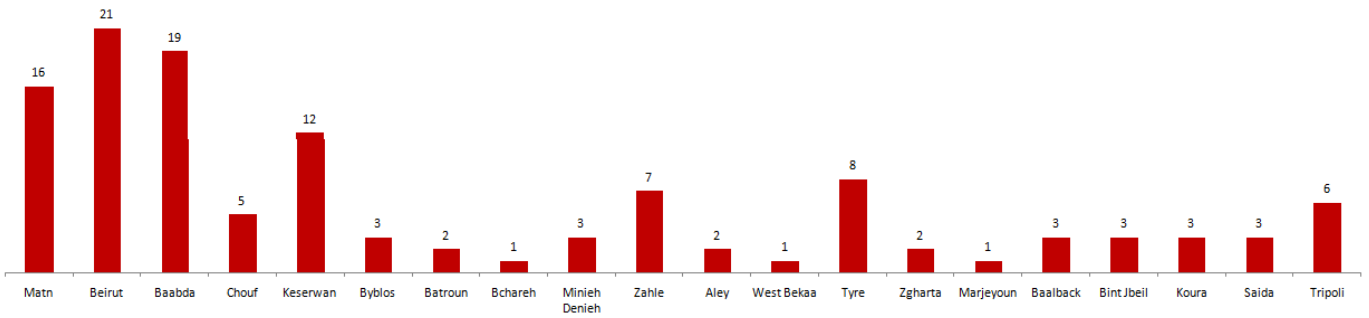
| Matn                | Cases |
|---------------------|-------|
| Antelias            | 1     |
| Baouchriyeh         | 2     |
| Beit Chaar          | 2     |
| Bikfaya             | 1     |
| Borj Hammoud        | 1     |
| Broummana           | 1     |
| Bsalim              | 1     |
| Dekouaneh           | 8     |
| Elissar             | 2     |
| Fanar               | 1     |
| Horch Tabet         | 1     |
| Jall Dib            | 1     |
| Jisr Bacha          | 3     |
| Mansouriyeh         | 1     |
| Mazraat Yachouaa    | 1     |
| Naqqach             | 2     |
| Qornet Chehouane    | 1     |
| Raouda Baouchriyeh  | 1     |
| Sinn Fil            | 2     |
| Zahriyeh            | 1     |
| Zalqa               | 2     |
| Aleyh               | Cases |
| Aaramoun            | 11    |
| Baaouerta           | 1     |
| Bayssour            | 1     |
| Bchamoun            | 5     |
| Blaybel             | 1     |
| Chanay              | 1     |
| Choueifat Oumara    | 2     |
| Aamroussiyyeh       | 1     |
| Hay Sellom          | 3     |
| Keyfoun             | 1     |
| Khaldeh             | 4     |
| Kesrwan             | Cases |
| Aachqout            | 1     |
| Aajaltoun           | 1     |
| Adonis              | 1     |
| Aintoura            | 1     |
| Bouar               | 1     |
| Jdaidet Ghazir      | 1     |
| Jounieh Haret Sakhr | 1     |
| Jounieh Sarba       | 1     |
| Safra               | 1     |
| Yahchouch           | 1     |
| Zouk Mosbeh         | 1     |
| Jbeil               | Cases |
| Aamchit             | 3     |
| Blat                | 1     |
| Hboub               | 1     |
| Jbayl               | 1     |
| Zibdine             | 1     |
| Sour                | Cases |
| Borj Chemali        | 1     |
| Borj Rahhal         | 1     |
| Majdel Zoun         | 2     |
| Sour                | 1     |
| Sour Bass           | 2     |

| Aakkar            | Cases |
|-------------------|-------|
| Aakkar Aatiqa     | 2     |
| Berqayel          | 1     |
| Fnaydeq           | 1     |
| Hayzouq           | 2     |
| Hokr Dahri        | 1     |
| Michmich          | 1     |
| Ouadi Khaled      | 2     |
| Qbaiyat           | 2     |
| Zouq Hassineh     | 1     |
| Tripoli           | Cases |
| Beddaoui          | 4     |
| Madineh Jdideh    | 1     |
| Mina N:1          | 2     |
| Other             | 24    |
| Qalamoun          | 1     |
| Trablous Bab Raml | 1     |
| Trablous Nouri    | 1     |
| Trablous Qoubbeh  | 16    |
| Tabbaneh          | 9     |
| Trablous Zahriyeh | 1     |
| Baalbeck          | Cases |
| Baalbek           | 2     |
| Chmistar          | 1     |
| Other             | 1     |
| Saaideh           | 2     |
| Temnine Tahta     | 1     |
| Younine           | 2     |
| Zgharta           | Cases |
| Beit Aaoukar      | 1     |
| Ehden             | 4     |
| Kfar Hata         | 1     |
| Mazraat Teffah    | 1     |
| Mejdlaiya         | 2     |
| Miriata           | 1     |
| Rachaaïne         | 1     |
| Sebaal            | 1     |
| Zgharta           | 4     |
| Minieh Danieh     | Cases |
| Bakhaaoun         | 1     |
| Beit Faqs         | 1     |
| Kfar Chellane     | 1     |
| Minieh            | 3     |
| Sir Danniyeh      | 1     |
| Saida             | Cases |
| Aabra             | 1     |
| Aanqoun           | 3     |
| Ain Heloueh       | 2     |
| Babliyyeh         | 2     |
| Ghaziyeh          | 1     |
| Hlaliyyeh         | 1     |
| Kfar Melki        | 1     |
| Other             | 3     |
| Sarafand          | 4     |
| Zahrani           | 1     |
| Zeita             | 1     |

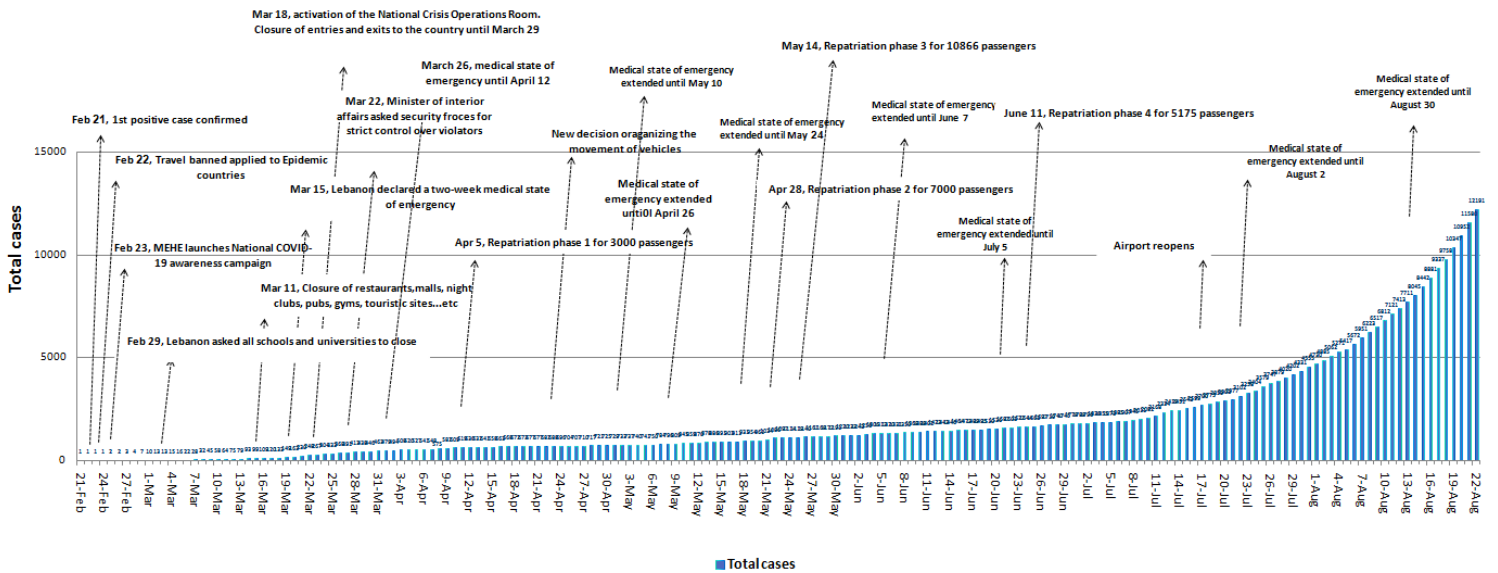
| Zahleh         | Cases |
|----------------|-------|
| Haret Fikani   | 1     |
| Jdita          | 1     |
| Other          | 1     |
| Ouadi Aarayech | 1     |
| Qabb Elias     | 1     |
| Riyaq          | 3     |
| Saadnayel      | 1     |
| Beqaa Gharby   | Cases |
| Marj           | 1     |
| Qaraaoun       | 1     |
| Rashaya        | Cases |
| Dahr Ahmar     | 1     |
| Marjeoun       | Cases |
| Khiyam         | 1     |
| Hasbaya        | Cases |
| Khalouat       | 1     |
| Hermel         | Cases |
| Hermel         | 1     |
| Unspecified    | 151   |



## Distribution of deaths by Governorates

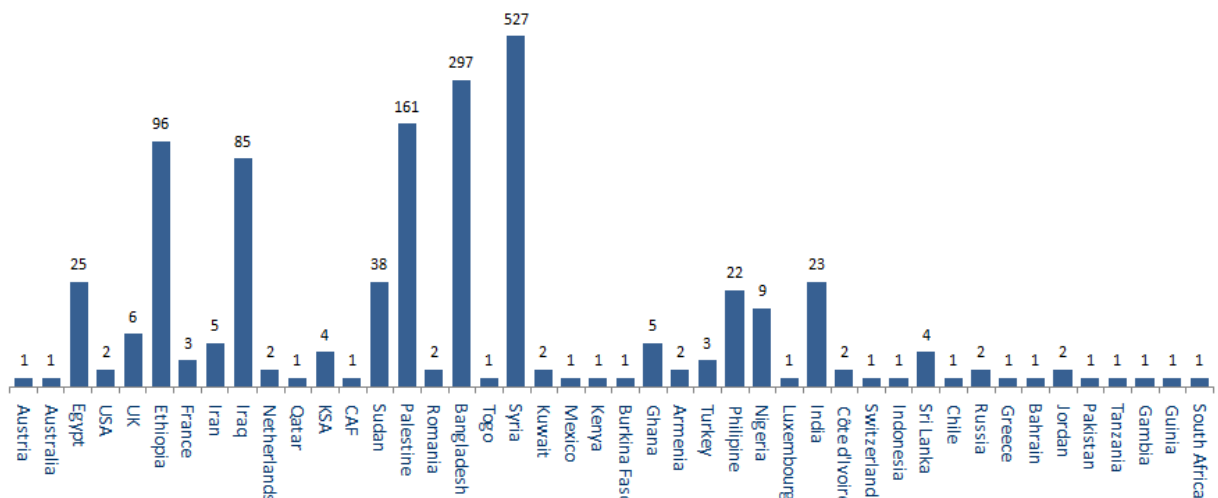


## Chronology of decisions according to number of cases

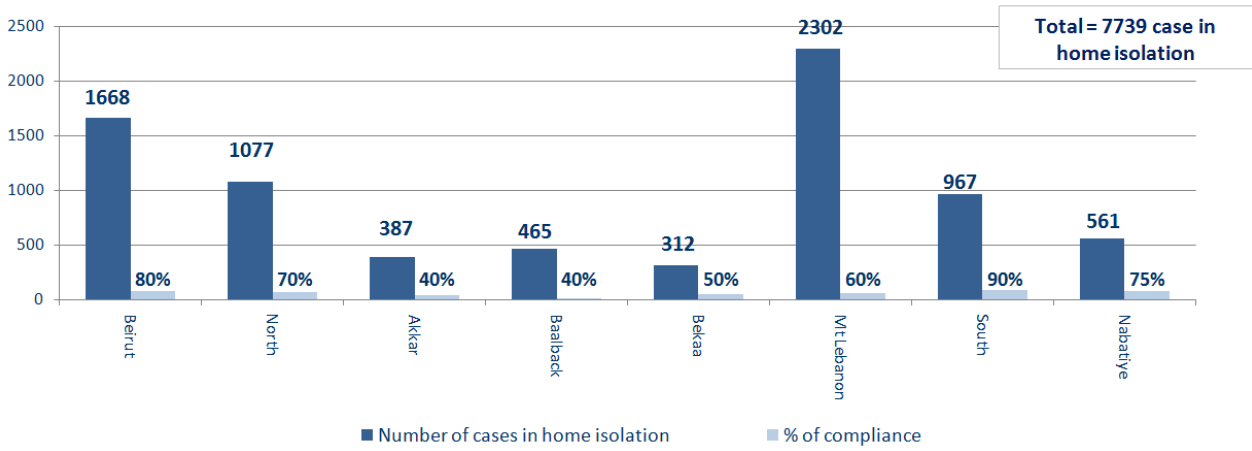


## Distribution of cases by nationality

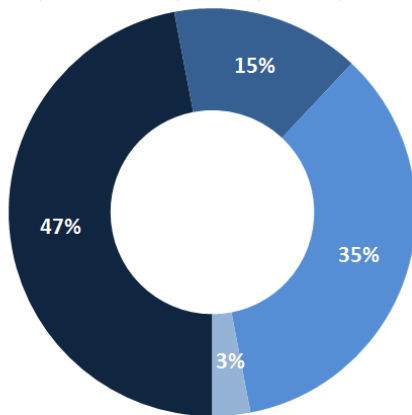
Lebanese : 10843 cases out of 12191 ( 88% )



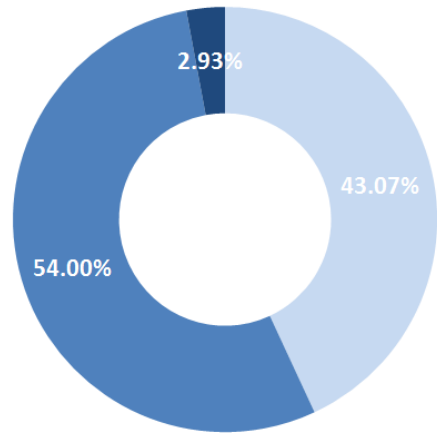
## Number of individuals in home isolation and percentage of commitment to isolation



### Exposure



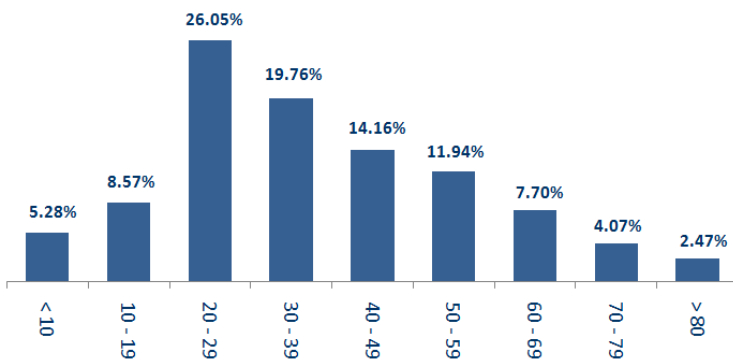
### Status of Cases



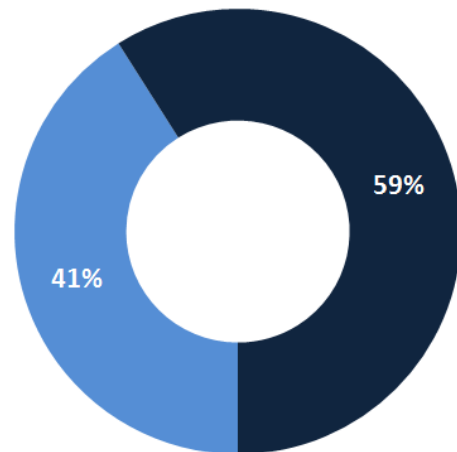
■ Contact with confirmed case ■ Travel related ■ Under investigation ■ Unidentified source

■ Asymptomatic ■ Mild/Moderate ■ Severe/Critical

### Distribution by age



### Distribution according to gender



■ Female ■ Male

---

## Decisions and actions taken – 22/8/2020

---



---

### Ministry of Public Health

---

The Ministry of Public Health announced the strategy followed in order to confront the outbreak of the Coronavirus, which revolves around:

- Follow-up of arrivals at the airport through the epidemiological surveillance and preventive medicine team
- Rapid reporting of test results for both expatriates and residents.
- Emphasizing the role of local authorities and security forces in monitoring compliance with quarantine.
- Joint forces with NGOs to support and help.
- Approving the diagnosis of discovering infected cases at the airport using trained dogs (the last experiments stage).
- Emphasis on hospitals, without exception, to receive cases of COVID-19.
- Following up on the equipping of governmental hospitals through the World Bank loan
- Launching an intensive media campaign across all media and social media.
- Providing aid to all hospitals from donations that are received in Lebanon in coordination with the army.
- Activating primary health care laboratory, radiographically and medicinally.
- Distributing medicines to hospitals and medicine distribution centers in the governorates and districts to reduce the movement of citizens.
- Working with the competent authorities and with the Egyptian, Japanese and Russian embassies and the World Health Organization to secure the vaccine against the virus and preserve the right of the Lebanese to medicine after completing the necessary studies.
- Adding new laboratories that conduct PCR tests to help in the rapid diagnosis of the virus, in addition to coordination and cooperation in this field with the Lebanese University

---

### Military and security services

---



---

#### Army

---

- The army carried out patrols in different Lebanese region
- Distributing food aid in various Lebanese regions through the CIMIC Office
- Establishing circumstantial barriers in various regions and supporting the security forces in measures to isolate the towns

---

### General Directorate of Internal Security Forces

---

- Internal Security Forces circulated the preventive measures that must be followed when traveling by cars and using shared transportation and public cars.
- Writing arrest records against violators of the general closure decision

| The number of seizure records during the past 24 hours  |           |       |       |       | The total number of records that have been organized against violators of the general mobilization decisions since 3/8/2020 |              |       |
|---|-----------|-------|-------|-------|---|--------------|-------|
| Written records of violating institutions (absorptive capacity and preventive measures)               |           |       |       |       | 31  |              |       |
| Written records of persons violating the decision to wear a mask                                      |           |       |       |       | 1   | Beirut       | 20026 |
| Written records of people violating the general mobilization decision (Aragil* and social distancing) |           |       |       |       | 297   | Mount Leb    | 16621 |
| <b>Total</b>  |           |       |       |       | 329   | Beqaa        | 7371  |
|   |           |       |       |       |   | North        | 6542  |
| Beirut  | Mount Leb | Beqaa | North | South |   | South        | 6245  |
| 1   | 110       | 73    | 83    | 62    |   | <b>Total</b> | 56805 |

- ISF will be isolating the following areas for the next week:

| <b>Governorate/District</b> | <b>Location</b>  |
|-----------------------------|--|
| Beirut Governorate          | Tariq al Jadidah, supporting municipality in Ard jalloul isolation,                |
| Baabda District             | Burj al Barajneh, Hay el Akrad (Handled by Municipality)                           |
| Tyre District               | Support in the isolation of Majdel zoun neighborhood                               |
| Bnt Jbeil District          | Supporting Khirbet slim municipality in the isolation of Jal al-Hayuk neighborhood |
| Chouf District              | Supporting Dariaa municipality in the isolation of the village                     |

---

### **General Directorate of Public Security**

---

- Implementing the required security and preventive measures at the airport, seaports and border crossings.
- Investigating and following up on suspected and positive cases and cases in home quarantine for residents and expatriates in the various Lebanese regions.
- Reporting new casualties among the elements of the internal security forces, internal security and the army.

---

### **General Directorate of State Security**

---

- Investigating and following up on suspected and positive cases and cases in home quarantine for residents and expatriates.
- Reporting the percentage of the regions 'commitment to the general mobilization and closing of commercial establishments decision: Akkar (70%), Hasbaya and Marjeyoun (100%), Tire (60%), Zahrani (85%), Jezzine (90%), Kesrouan (65%), Aley (90%), Jbeil (70%), Matn (30%), Nabatieh (80%), Beirut (80%), Baabda and Chouf (50%), Rashaya (90%), Baalbek-Hermel (85%), Zahle (80%), West Bekaa (70%), Tripoli (65%), Bcharre (90%), Koura (90), Minieh-Denniyeh (20%), Zgharta (95%), Batroun (90%), in While there was a complete absence of implementation of the mobilization decision in Sidon.
- Sending warnings and closing a number of violating commercial stores in the various regions.
- Reporting the closure of the Palace of Justice in Beirut following the registration of a positive case among the security forces.

---

**Ministry of Public Works and Transportation**

---

- Rafic Hariri International Airport (within the past 24 hours)

| Departing Flights               |      | Arriving Flights   |      |
|---------------------------------|------|--------------------|------|
| Number of Flights               | 43   | Number of Flights  | 41   |
| Number of Departing Individuals | 2346 | Number of Arrivals | 4043 |

| Port    | Entered    |             |   | Left       |             |   |
|---------|------------|-------------|---|------------|-------------|---|
|         | Import     | Direction   | # | Export     | Direction   | # |
| Beirut  | Cattle     | Spain       | 1 | Blank      | Antalya     | 1 |
|         | Containers | Valencia    | 1 | Containers | Alexandarun | 1 |
| Tripoli | Containers | Alexandarun | 1 | Blank      | Limassoul   | 1 |
|         | Salt       | Saida Port  | 1 | Blank      | Turkey      | 1 |
|         |            |             |   | Blank      | Romania     | 1 |
| Jounieh |            |             |   | Fuel       | Jeyyeh Port | 1 |
| Saida   | Metals     | Beirut Port | 1 |            |             |   |
| Zahrani |            |             |   | Blank      | Russia      | 1 |
|         |            |             | 5 |            |             | 7 |

---

**Lebanese Red Cross**

---

|                   |   |                    |   |         |  |                    |   |
|-------------------|---|--------------------|---|---------|--|--------------------|---|
| 41834<br>(39 New) | Number of PCR tests transferred to laboratories   | 0                  | Number of additional ambulance centers ready to respond               | 47      | ambulance centers  | 3855<br>(36 New)   | cases transferred to hospitals                      |
| 166               | Number of volunteers trained to transfer PCR tests  | 1444               | Number of trained paramedics  | 8509    | total number of respondents  | 67384<br>(126 New) | number of those benefiting from awareness *sessions |
| 967               | The number of university volunteers trained to follow up on prevention measures in companies and institutions | 217                | Number of university volunteers trained to conduct awareness sessions | 550     | total LRC volunteers for covid19                                       | 8320               | number of trained managers for isolation centers    |
| 4100              | Number of beneficiaries from educational electronic platforms COVID-19  | 74524<br>(274 New) | Number of distributed equipment                                       | 1221427 | total distributed posters, brochures, and flyers on covid19 prevention | 412<br>( 2 New)    | number of rpisons that have been disinfected        |



## General announcements

On 21/8/2020, the Ministry of Interior issued Memorandum **No. 86 / M / 2020** related to clarifying some of the paragraphs in the General Closing Decision No. 1003, where some exceptions were added in Article Three of the decision where employees of Touch and Alfa were added, and the exchange shops. In addition to adjusting the opening times of libraries

The Ministry of Education and Higher Education issued on 19/8/2020 Decision **No. 377 / M / 2020** stipulating that all educational institutions, public and private, in all their stages, stop teaching and conducting exams in presence during the period from 21/8/2020 to 7/9/ 2020, provided that it continues its administrative work according to a rotation schedule determined by the Director General or the President of the Corporation in a manner that takes into account all preventive measures

The implementation of the general closure decision pursuant to Decision **No. 1003 of 18/08/2020** related to the maximum closure within the general mobilization measures to confront the spread of the Coronavirus, as it was decided to implement the closure, starting Friday morning 21/8/2020 until Monday morning 7/9/2020, and specifying the sectors excluded from the closure and the due conditions following them, in addition to preventing entry and exit from the streets daily. From six in the evening until six in the morning

**Note: The decisions can be found at [www.drm.pcm.gov.lb](http://www.drm.pcm.gov.lb)**

### Examples of lack of adherence to safety measures

- Demonstration, and Roadblocks
- Overcrowding in restaurants and cafes
- Non-compliance of citizens with preventive measures
- Gathering in cafes
- gatherings without wearing masks.
- social gatherings and celebrations and kids' areas

**If you feel any symptoms, call directly the hotline of the Ministry of Public Health: 1214 or 01/594459**

### A list of the laboratories accredited by the MoPH to conduct PCR tests

| <b>Public Hospitals</b>                    |          |   |            |
|--|----------|---|------------|
| Hospital Name                              | Location | Hospital Name                               | Location   |
| Rafic Hariri University Hospital           | Beirut   | Bint Jbeil Governmental Hospital            | Bint Jbeil |
| Tripoli Governmental Hospital              | Tripoli  | President Elias Hrawi Governmental Hospital | Zahle      |
| Fattouh Keserwan Governmental Hospital     | Kesrwen  | Batroun Governmental Hospital               | Batroun    |
| Baalbek Governmental Hospital              | Baalbek  | Halba Governmental Hospital                 | Halba      |
| Tibnin Governmental Hospital               | Tibnine  |   |            |
| <b>Private Hospitals</b>                   |          |   |            |
| Hospital/Lab Name                          | Location | Hospital/Lab Name                           | Location   |
| AUBMC                                      | Beirut   | MLH   | Baabda     |
| Saint George Hospital                      | Beirut   | Saint Georges Hospital                      | Baabda     |
| Hôpital Notre Dame des Secours (CHU – NDS) | Jbeil    | Ain w Zein Hospital                         | Chouf      |
| HDF/Merieux/USJ                            | Beirut   | Hamoud Hospital                             | Sidon      |
| Makkassed General Hospitals                | Beirut   | Dar el Amal Hospital                        | Baalbek    |
| LAUMC                                      | Beirut   | Sheikh Ragheb Harebb Hospital               | Nabatieh   |
| Wardieh Hospital                           | Beirut   | Al Hadi Laboratory                          | Baabda     |
| Al Mathlum Hospital                        | Tipoli   | Akiki Laboratory                            | Byblos     |
| Al Mounla Hospital                         | Tripoli  | MDC   | Tyr        |
| Haykal Hospital                            | Koura    | Jabal Amel Hospital                         | Tyr        |
| Serhal Hospital                            | Metn     | Doctor's Center                             | Beirut     |
| HLG  | Beirut   | KML   | Sidon      |
| SDC  | Nabteih  | ADC*American Diagnostic Center              | Beirut     |
| INOIE Laboratory                           | Baabda   | Khoury Hospital                             | Zahle      |
| TRANSMEDICAL Laboratory                    | Metn     | Sacre Coeur                                 | Hazmieh    |
| MCC  | Zahle    | BELLEVEUE Hospital                          | Mansourieh |
| CHN  | Zaghrta  | LMSE  | Tripoli    |
| Clinigen Laboratory                        | Hazmieh  | Al Rasoul Al Aazam Hospital                 | Beirut     |
| Centre Medical Moderne                     | Ghbraye  | Nabni Hospital                              | Tripoli    |
| MDTC                                       | Hamra    |   |            |

**Note: Some positive test results are sent from the highlighted laboratories to the Ministry of Public Health, that does not include a phone number to track cases, which contributes to the spread of the epidemic and unknown cases**