



Lebanon National Operations Room Daily Report on COVID-19

Monday, September 21, 2020

Report #187

Time Published: 9:30 PM

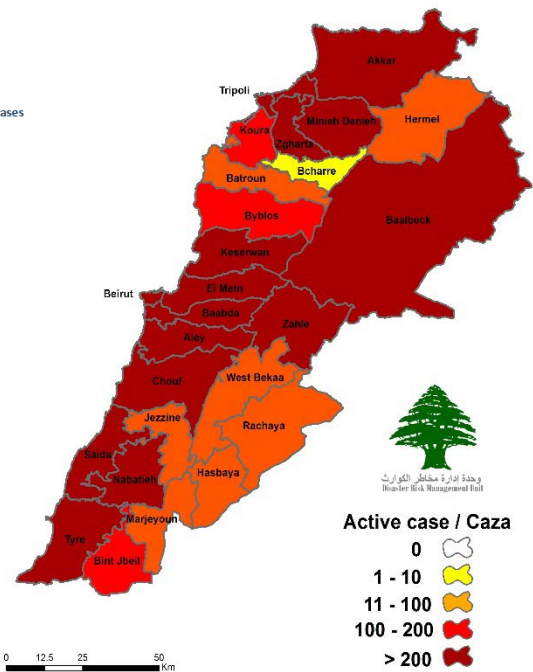
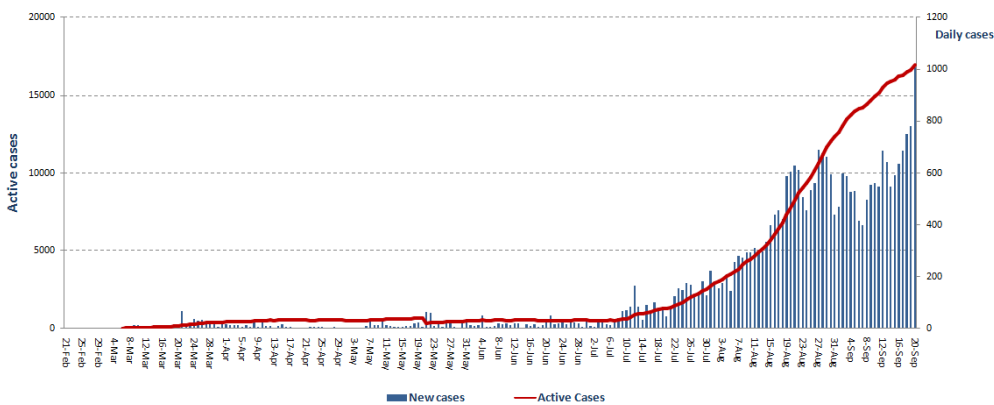
12,445 Total Recoveries		307 Total Death Since 21/2/2020		29,986 Total Cases Since 21/2/2020		684 New Cases	
398 New Recoveries		10 New Deaths		1,568 Expats		28,418 Locals	
123 Cumulative in ICU		460 Hospitalized Cases		17,234 Active Cases		854 Medical Staff Cases	
0 New Cases in ICU		337 Mild Cases		16,774 Home Isolation		12 New Cases in Medical Staff	
Lebanon compared to the world						703,992 Conducted PCR Tests Since 21/2/2020	
Registered Cases		29,986		31,344,422		2,293 Expats PCR Tests	
Total Deaths		307		966,514		4,369 Locals PCR Tests	
Percentage of Deaths		1,02%		3,08 %			
Total Recoveries		12,445		22,930,389			

Source : Data Issued by Ministry of Public Health

*The Above data was last updated at 10:00 PM

Number of Cases by Location

- 6,279 case is Under investigation



وحدة إدارة مخاطر الكوارث
Disaster Risk Management Unit

Beirut	Cases
Ras Beirut	4
Manara	7
Hamra	4
Raouche	5
Mseitbeh	3
Mazraa	6
Qoreitem	3
Tariq Jdeedeh	9
Ras El Nabeh	1
Achrafieh	11
Mar Elias	1
Tallet El Khayyat	4
Basta Tahta	1
Ein El Teneh	1
Zarif	2
Basta El Fawka	2
Sioufi	1
Others	10
Baabda	Cases
Chiah	3
Jnah	4
Ouzai	4
Bir Hassan	1
Abadiyeh	1
Kfarshima	2
Ein El Rimmaneh	1
Haret Hreik	10
Laylaki	1
Borj El barajneh	9
Mreijeh	6
Hadat	10
Hazmieh	8
Baabda	4
Tahwetet El Ghadir	3
Bseba	1
Others	6
Zahle	Cases
Bar Elias	2
El Rassieh	1
Saadnayel	3
El Narbara	1
Hoch El Oumara	1
Dalhamieh	1
Maalaqa	1
Taalabaya	1
Karak	1
Ablah	1
Qaa El Rim	1
Majdel Anjar	2
Reet	1
Others	3
Koura	Cases
Kefraya	1
Others	2

Matn	Cases
Borj Hammoud	6
Bouchrieh	2
Sin El Fil	5
Nabaa	2
Jal el Deeb	2
Jdeidet El Metn	3
Sabtieh	2
Dekwene	5
Naqqash	2
Antelias	3
Sed El Baouchrieh	3
Zalka	2
Dbayeh	1
Mansouriyeh	3
Roumieh	73
Qornet Chehwan	1
Rabieh	1
Nabayh	1
Rabweh	1
Byaqout	2
Bekfayya	2
Dayshounieh	1
Ein Saadeh	1
Beit Merry	1
Fanar	1
Bsalim	3
Mtayleb	1
Beit El Chaar	2
Deek el Mahdi	2
Mazraet Yashouh	2
Zikrit	1
Beit Shabab	1
Qornet El Hamra	1
El Oyoun	1
Kfar Okab	1
Others	2
Chouf	Cases
Naameh	2
Haret El Naameh	1
Barja	4
Chehim	2
Anout	1
Simqaniyyeh	1
Daraya	2
Jiyyeh	1
Siblin	3
Joun	1
Wadi El Zayneh	1
Ein Zhalta	1
Btalloun	1
Bater	1
Others	7

Aleyh	Cases
EL Amrousiyyeh	1
El Oumara	2
Bleibel	1
Soufar	1
Hay El Sillom	3
Aramoun	10
Bsous	1
Bshamoun	7
Qmatiyeh	1
Khaldeh	2
Bmakkeen	1
Bhamdoun	2
Others	1
Jbeil	Cases
Jbeil	1
Amchit	1
Others	4
Zghorta	1
Erdeh	1
Majdlayya	1
Alma	1
Ehden	1
Meryata	2
Others	2
Baalbak	Cases
Baalbak	1
Arsel	1
Ein Borday	4
Saeedeh	1
Temnin El Fawqa	1
Beit Chama	8
Hoch El Rafqa	4
Temnin El Tahta	2
Tarayya	4
Nabe Sheeth	1
Others	2
Beqaa El Gharby	Cases
Mashghara	4
Mansoura	2
Jb Jennin	1
GhazzeH	1
Qaroun	1
Marj	3
Tripoli	Cases
Qebbeh	6
Mina	6
Zahrieh	1
Tabbaneh	2
Qalamoun	1
Beddawy	2
Zaytoun	1
Others	18

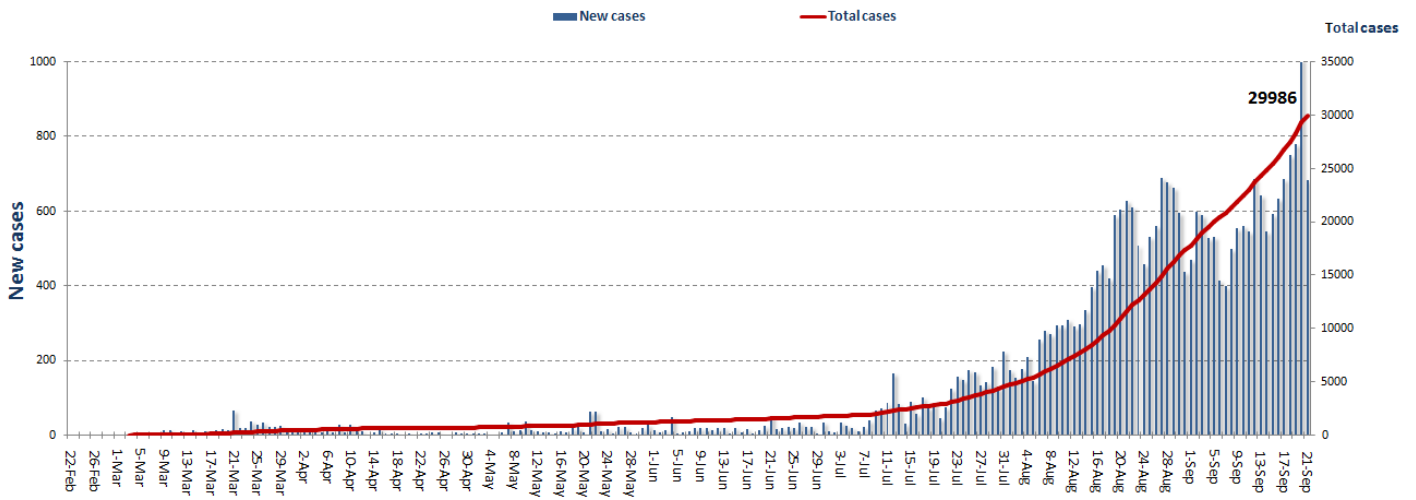
Saida	Cases
Bramieh	1
Haret Saida	3
Ein el Helwe	4
Hlalieh	2
Ghazieh	3
Abra	1
Loubieh	1
Sarafand	1
Kfarhatta	3
Others	18
Keserwan	Cases
Hrajel	1
Zouk Michael	4
Kaslik	2
Ghadir	2
Adonis	2
Nahr El Kalb	1
Haret Sakher	1
Zouk Mosbeh	1
Jeita	1
Ajaltoun	2
Sehaileh	1
Ghazir	1
Faqra	1
Ashkout	1
Sour	Cases
Jwayya	1
Maaroub	1
Others	1
Meneh Duniyh	Cases
Deir Amar	1
Zouk Bhannin	1
Taran	1
Bhannin	1
Seer Duniyyeh	1
Bqarsouna	1
Others	3
Nabatieh	Cases
Nabate Fawka	1
Kfarremman	1
Habbouch	1
Deir El Zahrani	1
Dweir	1
El Shkeef	1
Zoutar lSharkih	1
Qaqaiyyet l Jisr	2
Yohmor	1
Others	4
Akkar	Cases
Arka	1
Sahle	1
Fneidek	2

Hermel	Cases
Hermel	1
Qasr	4
Faara	1

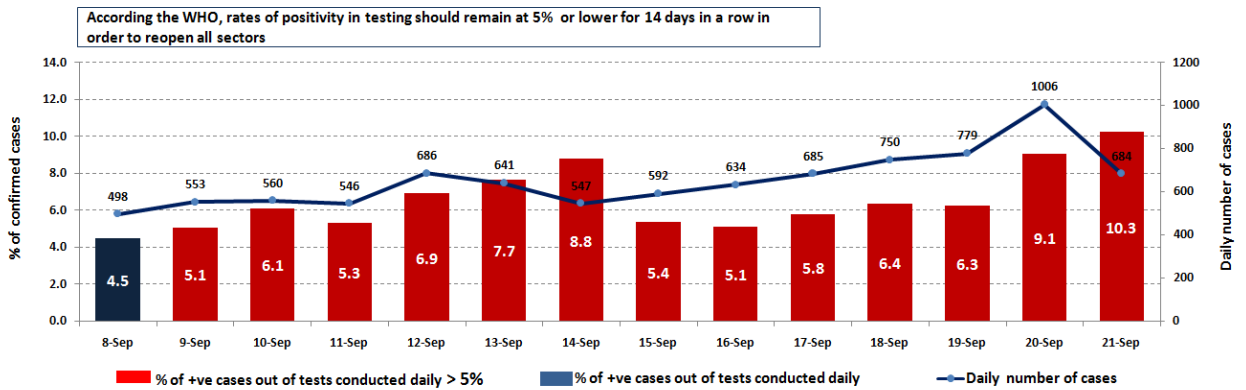
Bnt Jbeil	Cases
Tebnin	1
Sultaniyyeh	1
Shakra	2
Kfardounin	1
Kounin	1

Marjayoun	Cases
Deir Mimas	1
Hola	1
Tallouseh	1
Souwana	1
Blida	2
Others	3

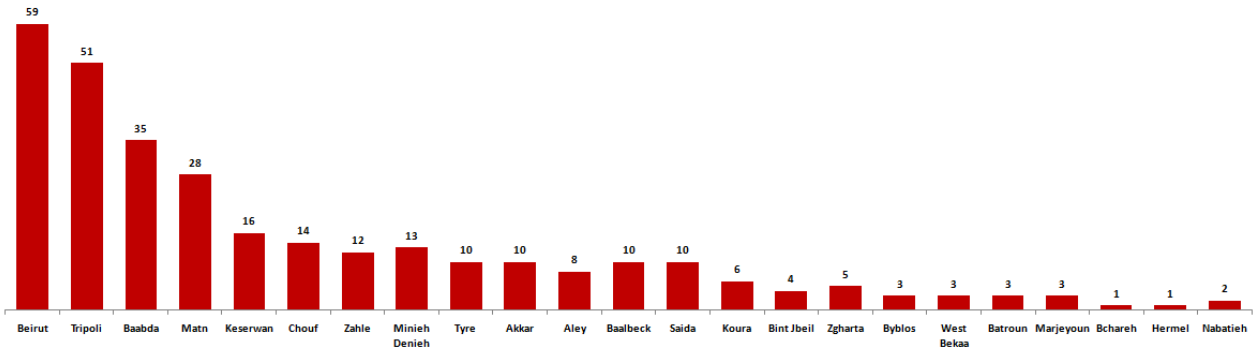
Cases per day



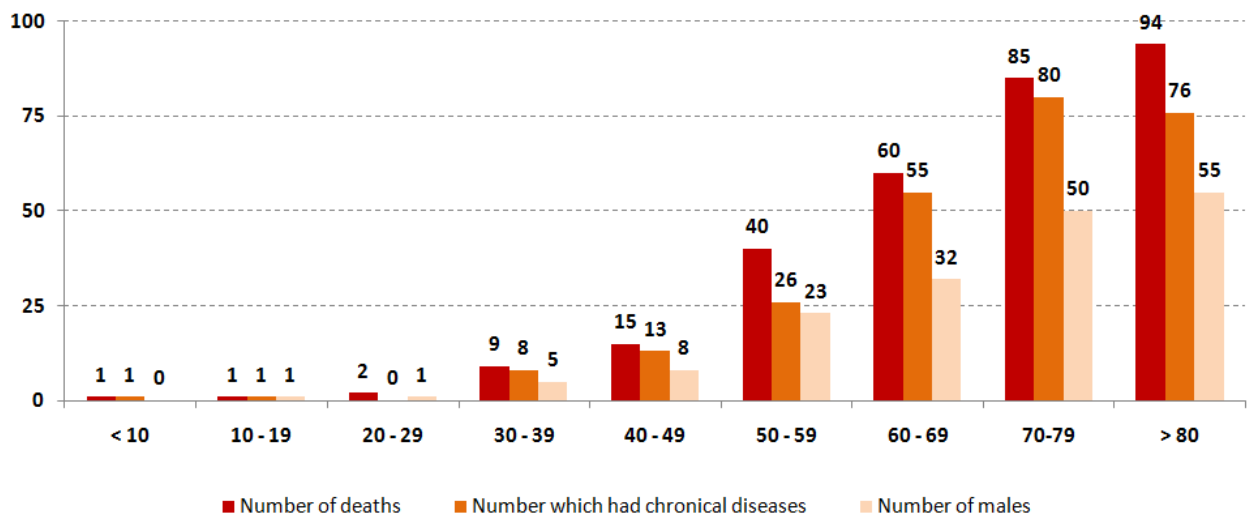
The percentage of positive cases out of the number of daily checks (8 September to 21 September 2020)



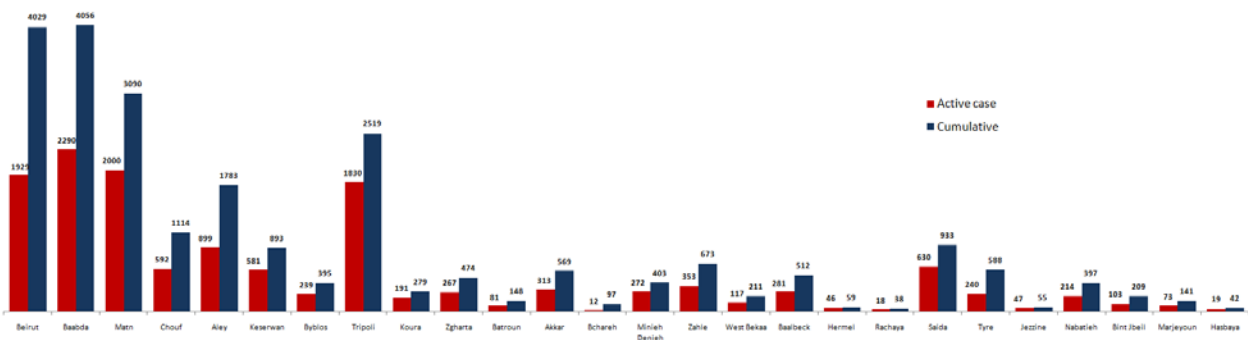
Distribution of deaths by Governorates



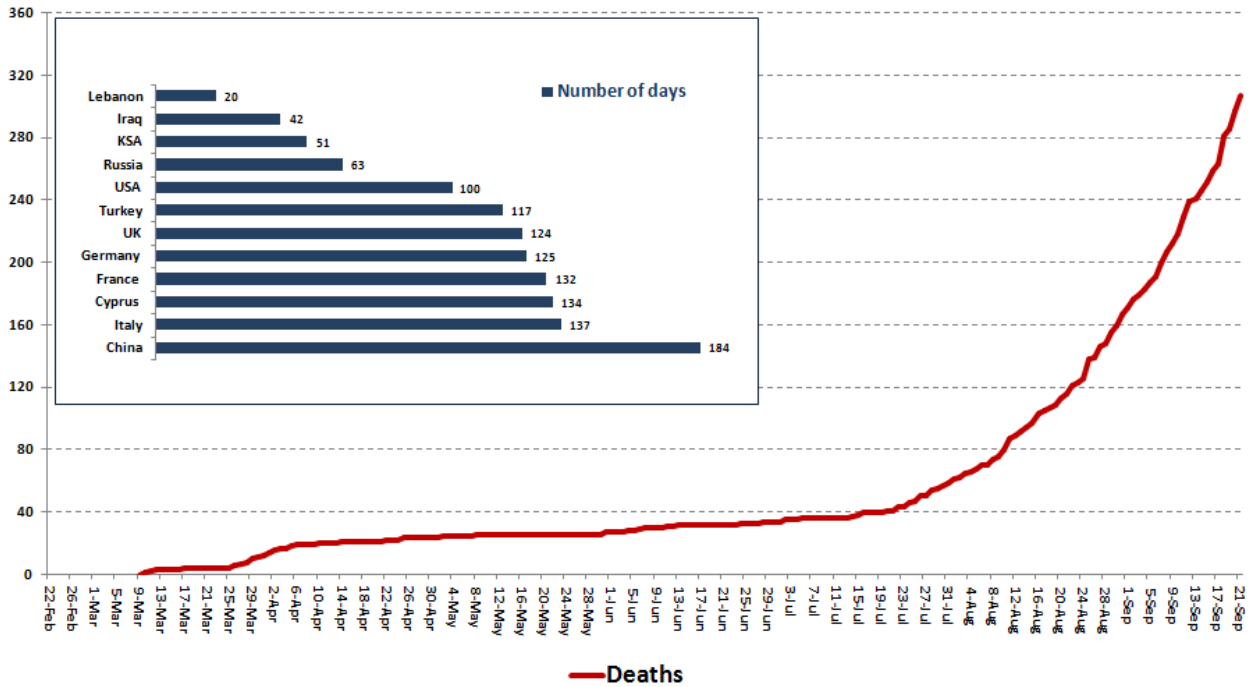
Distribution of deaths by Age



Distribution of Active Cases by Districts



Comparison of the rate of doubling of the number of deaths in Lebanon with other countries (death doubling rate)

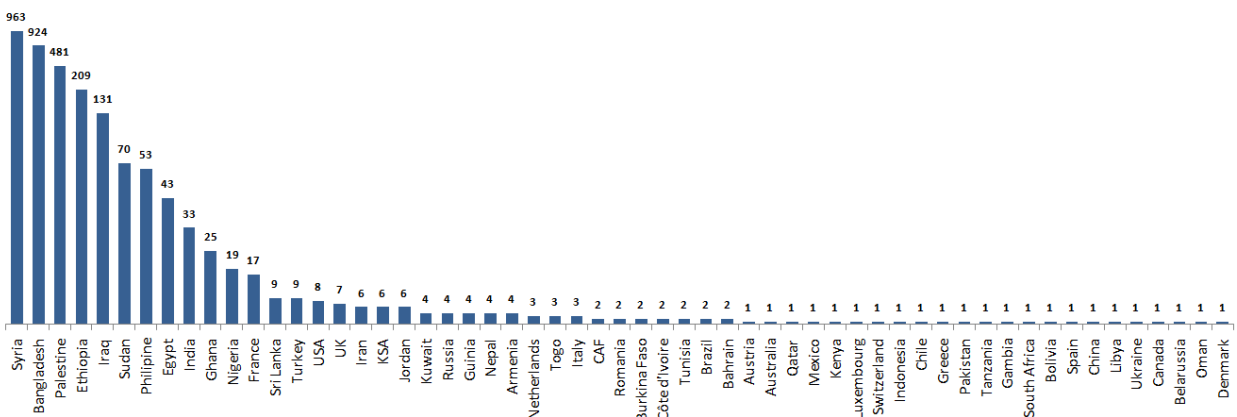


The distribution of the recorded deaths during the past 24 hours

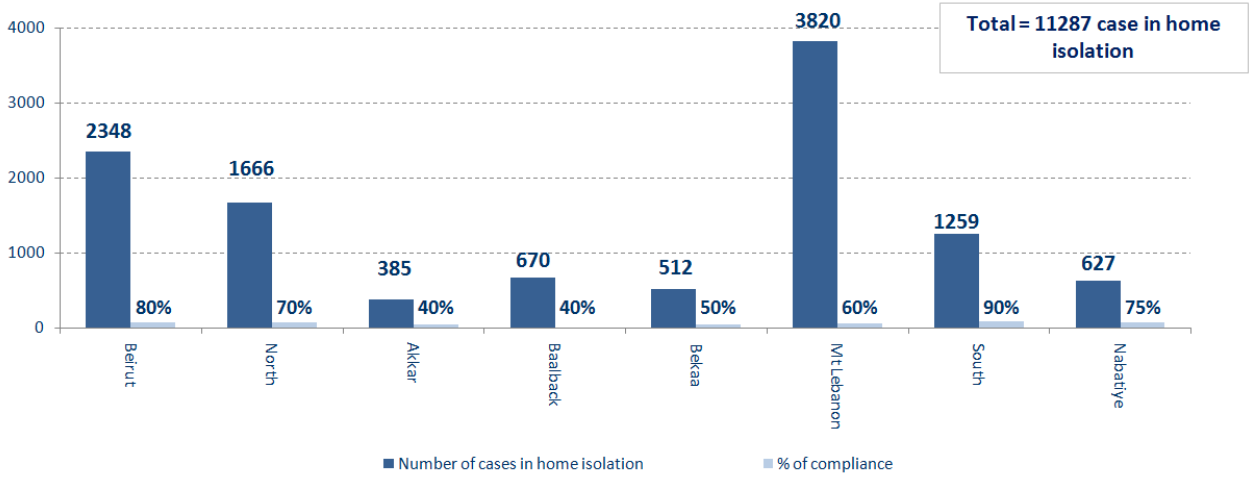
Hospital	Residence	Gender	Age	Chronic
Saint George	Baabda	Female	47	No
Notre Dame	Keserwan	Female	76	Yes
Tripoli Gov.	Tripoli	Female	66	Yes
Tripoli Gov.	Tripoli	Male	58	No
Tripoli Gov.	Tripoli	Female	58	Yes
Tripoli Gov.	Tripoli	Male	57	Yes
Berri Gov.	Nabatieh	Female	67	Yes
Ain w Zain	Chouf	Female	91	Yes
Hotel Dieu	Beirut	Female	90	Yes
Saida Gov.	Saida	Male	99	Yes

Distribution of cases by nationality

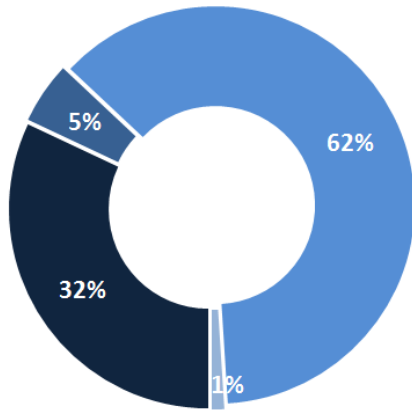
Lebanese : 26899cases out of 29986 (88%)



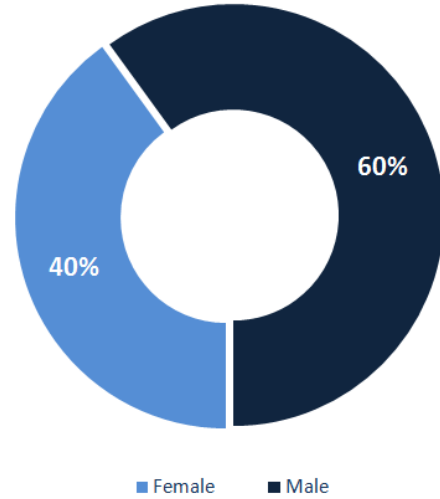
Number of individuals in home isolation and percentage of commitment to isolation



Exposure

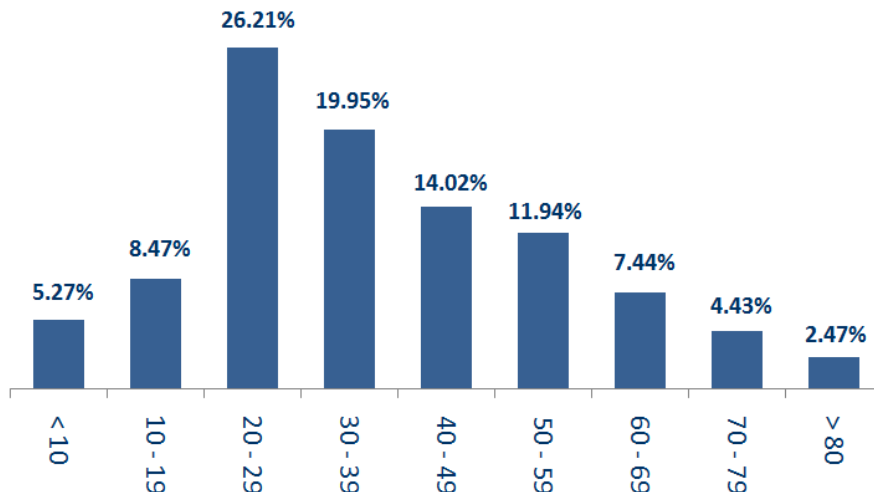


Distribution according to gender

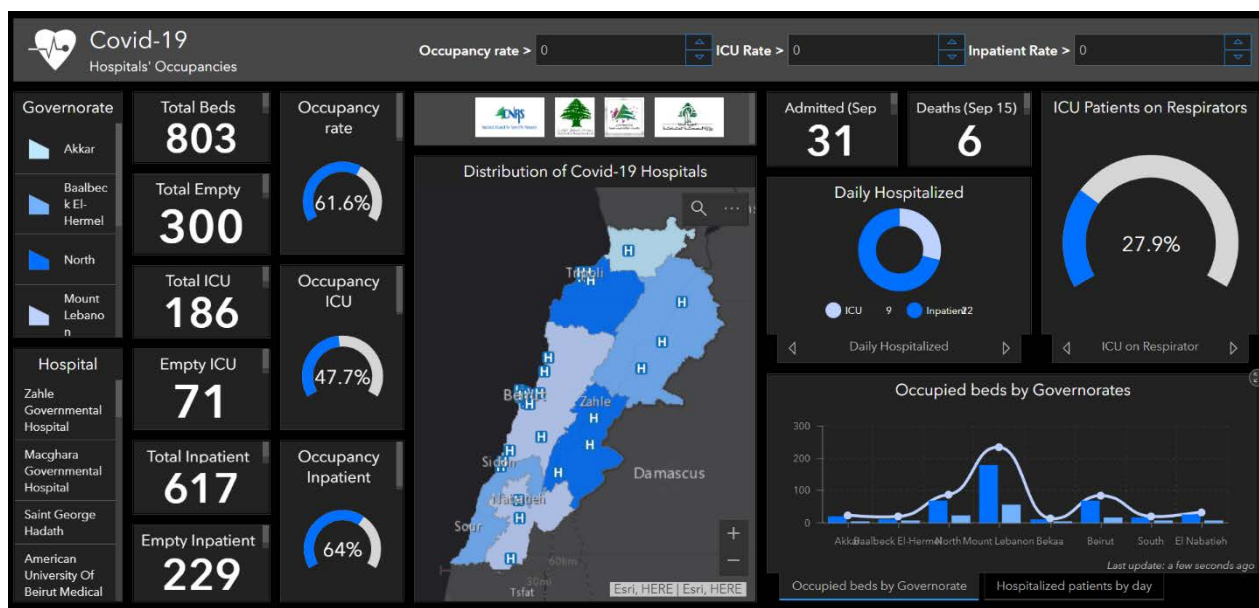


Legend for Exposure: ■ Contact with confirmed case ■ Travel related ■ Under investigation ■ Unidentified source

Distribution by age



The number of beds available for those infected with Coronavirus and the occupancy rate



For daily information on all the details of the bed distribution available for Covid-19 patients in the various governorates according to the hospitals

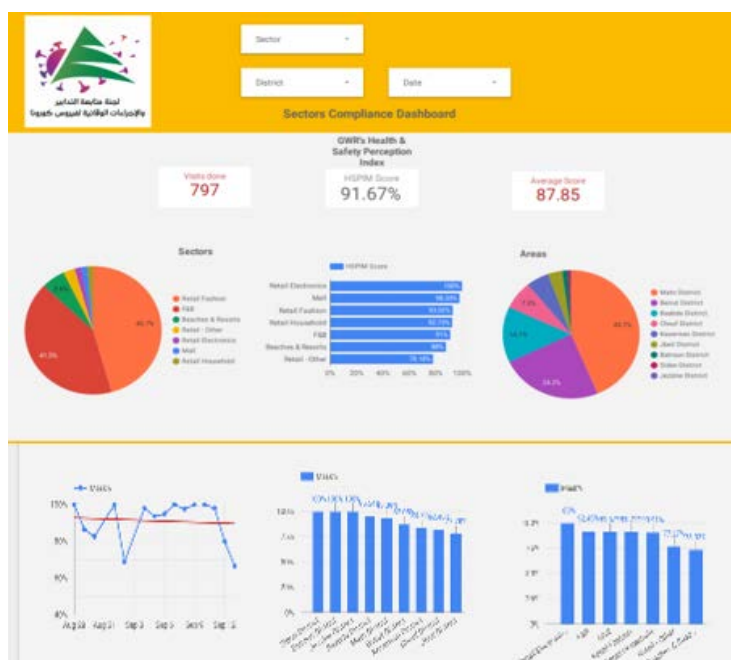
- Computer: <https://gisleb.cnrs.edu.lb/portal/apps/opsdashboard/index.html#/34b32db8030d4f229fc5db9ab686cca9>
- Mobile: <https://shorturl.at/cnqJ2>

Online platform to track sector commitment in general mobilization procedures

Based on the recommendation issued by the National Committee for Follow-up of Preventive Measures and Measures to Confront the Coronavirus to open all sectors, provided that the general mobilization procedure (safe distance, muzzle, and hand sterilization) be applied, a special electronic platform was created that allows monitoring and measuring the percentage of commitment by various sectors on an ongoing basis.

The detailed results can be viewed directly at the following link:

<http://bit.ly/covidsectordata>



Decisions and actions taken – 21/09/2020

Ministry of Public Health

The Ministry of Public Health submitted the recommendations issued by the medical scientific committee in the ministry to the Committee for Follow-up of Preventive Measures and Measures to Confront the Coronavirus, as the most prominent of which was the call for a "complete closure for a period of two weeks, which constitutes an opportunity to prepare for the autumn season.

The Ministry of Public Health issued the results of additional examinations for incoming trips to Lebanon on 9/19/2020, where five new infections were recorded among the arrivals, and they were distributed over the following trips:

Arriving from	Company	Flight Number	Number of Positive Cases
Baghdad	Iraqi Airways	131	1
Irbeil	MEA	325	1
Paris	Air France	566	1
Istanbul	MEA	266	1
Kuwait	Kuwaiti Airlines	501	1
			5

Lebanese Red Cross

228,082	Number of PCR tests transferred to laboratories	45,117 (138 New)	Number of additional ambulance centers ready to respond	48	ambulance centers	5,061 (33 New)	cases transferred to hospitals
166	Number of volunteers trained to transfer PCR tests	1,498	Number of trained paramedics	8,591	total number of respondents	77,206	number of those benefiting from awareness *sessions
967	The number of university volunteers trained to follow up on prevention measures in companies and institutions	291 (74 New)	Number of university volunteers trained to conduct awareness sessions	550	total LRC volunteers for covid19	8,435 (5 New)	number of trained managers for isolation centers
4,209 (4 New)	Number of beneficiaries from educational electronic platforms COVID-19	89,859 (42 New)	Number of distributed equipment	1,236,031	total distributed posters, brochures, and flyers on covid19 prevention	523 (2 New)	number of prisons that have been disinfected

General Directorate of State Security

- Investigating and following up on suspected and positive cases and cases in home quarantine for residents and expatriates.
- Sending warnings and closing a number of violating commercial stores in the various regions.

Beirut	South	North	Akkar	Beqaa	Nabateih	Baalbek Hermel	Mount Leb
47%	50%	75%	45%	60%	60%	N/A	35%

General Directorate of Internal Security Forces

- Internal Security Forces circulated the preventive measures that must be followed when traveling by cars and using shared transportation and public cars.
- Writing arrest records against violators of the general closure decision

The number of seizure records during the past 24 hours					The total number of records that have been organized against violators of the general mobilization decisions since 03/08/2020		
Written records of violating institutions (absorptive capacity and preventive measures)					0		
Written records of persons violating the decision to wear a mask					3	Beirut	20,642
Written records of people violating the general mobilization decision (Aragil* and social distancing)					4	Mount Leb	18,813
Total					7	Beqaa	8,030
						North	6,784
Beirut	Mount Leb	Beqaa	North	South	South	6,752	
3	0	0	0	4	Total	61,051	

Ministry of Public Works and Transportation

Departing Flights		Arriving Flights	
Number of Flights	36	Number of Flights	38
Number of Departing Individuals	4,103	Number of Arrivals	3,087

Port	Entered			Left		
	Import	Direction	#	Export	Direction	#
Beirut				Containers	Tripoli	1
Tripoli	Diesel	Aamchit	1			
	Containers	Turkey	1			
Joneih	Diesel	Beirut	1	Gasoline	Beirut	1
Zahrani	Blank	Ukraine	1			
Chekka	Construction Material	Laranka	1			
	Oil	Italy	1			
			7	2		

General announcements

The following recommendations were issued by the Committee for Follow-up of Preventive Measures and Procedures for Coronavirus on 9/21/2020:

- The Ministry of Public Health activates the work of the epidemiological surveillance program, ensures that hospital and health institutions follow the agreed-upon risk containment protocol, circulates to laboratories, determines the timing for conducting examinations for contacts with a minimum of five days, develops a plan to increase the number of PCR examinations for contacts, studies and approves the proposed tariff To receive cases of Coronavirus infection in private hospitals and to activate adherence to the mechanism of reception, entry and exit of patients infected with Coronavirus in hospital institutions
- The Ministry of Public Health pays the material allowance owed to the directors of the isolation centers, provided that the international donors work to activate coordination and secure the operational costs of these centers
- The Syndicate of Private Hospitals and Doctors in Beirut and the North and the Syndicate of Nurses and Nurses in Lebanon set up an emergency line for each of them and put it at the disposal of health sector workers to report any problem or complaint related to the non-application or misapplication of the protocol for containing risks within health and hospital institutions.
- The Syndicate of Private Hospital Owners will work to open and operate special departments for Corona patients in all category "A" hospitals, while providing incentives for doctors, nurses, and workers in these departments.
- The Ministry of Interior and Municipalities and the Ministry of Tourism to activate the procedures of the third phase of the plan to reopen the generalized sectors in support of the recommendations issued on August 26, 2020 in terms of taking legal measures against violators
- The Ministry of Interior and Municipalities and the Ministry of Tourism to activate the procedures of the third phase of the plan to reopen the generalized sectors in support of the recommendations issued on August 26, 2020 in terms of taking legal measures against violators
- The Ministry of Justice works to reduce overcrowding in prisons
- Developing an action plan for responding and containing cases infected with Coronavirus in health care homes by the Ministries of Public Health and Social Affairs
- Include the daily report issued by the National Operations Room for Disaster Management an interactive map showing the affected cases for every thousand residents for fourteen days in each district, so that appropriate measures can be taken
- Waiting to close the sectors and work to implement and activate all recommendations while continuing to assess the reality of the epidemic
- The Ministry of Information circulates recommendations to citizens in order to raise awareness and adhere to preventive measures and procedures
- The General Directorate of Civil Aviation at the Ministry of Public Works and Transport issued Circular No. 52/2 on September 21, 2020 to all airlines and ground services companies operating at Rafic Hariri International Airport regarding procedures related to passengers arriving in Lebanon starting from September 23, 2020
- Implementing the Ministry of Interior and Municipalities Decision No. 1129 of 9/17/2020 regarding amending the opening and closing times of industrial and commercial establishments, which kept work at the time of preventing exit and entering the streets between the first hour of midnight until six in the morning of every day, and approved the recommendations issued by A meeting of the Committee for Follow-up of Preventive Measures and Measures to Confront the Coronavirus on 9/16/2020

Note: The decisions can be found at www.drm.pcm.gov.lb

Examples of lack of adherence to safety measures

- Demand gatherings and demonstrations.
- Failure to comply with the preventive measures and procedures required in a number of stores and markets (putting on a muzzle or face mask, sterilizing hands, maintaining a safe distance).
- Non-compliance with the 50% occupancy rate in several restaurants and amusement game centers.
- Gatherings for social events.
- Failure of those in contact with confirmed cases to adhere to home isolation procedures until the results of the laboratory tests are issued.

If you feel any symptoms, call directly the hotline of the Ministry of Public Health: 1214 or 01/594459

A list of the laboratories accredited by the MoPH to conduct PCR tests

Public Hospitals			
Hospital Name	Location	Hospital Name	Location
Rafic Hariri University Hospital	Beirut	Bint Jbeil Governmental Hospital	Bint Jbeil
Tripoli Governmental Hospital	Tripoli	President Elias Hrawi Governmental Hospital	Zahle
Fattouh Keserwan Governmental Hospital	Kesrwen	Batroun Governmental Hospital	Batroun
Baalbek Governmental Hospital	Baalbek	Halba Governmental Hospital	Halba
Tibnin Governmental Hospital	Tibnine		
Private Hospitals			
Hospital/Lab Name	Location	Hospital/Lab Name	Location
AUBMC	Beirut	MLH	Baabda
Saint George Hospital	Beirut	Saint Georges Hospital	Baabda
Hôpital Notre Dame des Secours (CHU – NDS)	Jbeil	Ain w Zein Hospital	Chouf
HDF/Merieux/USJ	Beirut	Hamoud Hospital	Sidon
Makkassed General Hospitals	Beirut	Dar el Amal Hospital	Baalbek
LAUMC	Beirut	Sheikh Ragheb Harebb Hospital	Nabatieh
Wardieh Hospital	Beirut	Al Hadi Laboratory	Baabda
Al Mathlum Hospital	Tipoli	Akiki Laboratory	Byblos
Al Mounla Hospital	Tripoli	MDC	Tyr
Haykal Hospital	Koura	Jabal Amel Hospital	Tyr
Serhal Hospital	Metn	Doctor's Center	Beirut
HLG	Beirut	KML	Sidon
SDC	Nabteih	ADC*American Diagnostic Center	Beirut
INOVIE Laboratory	Baabda	Khoury Hospital	Zahle
TRANSMEDICAL Laboratory	Metn	Sacre Coeur	Hazmieh
MCC	Zahle	BELLEVUE Hospital	Mansourieh
CHN	Zaghrta	LMSE	Tripoli
Clinigen Laboratory	Hazmieh	Al Rasoul Al Aazam Hospital	Beirut
Centre Medical Moderne	Ghbraye	Nabni Hospital	Tripoli
MDTC	Hamra		

Note: Some positive test results are sent from the highlighted laboratories to the Ministry of Public Health, that does not include a phone number to track cases, which contributes to the spread of the epidemic and unknown cases