

## Lebanon National Operations Room Daily Report on COVID-19

Sunday, September 20, 2020

Report #186

Time Published: 11:00 PM

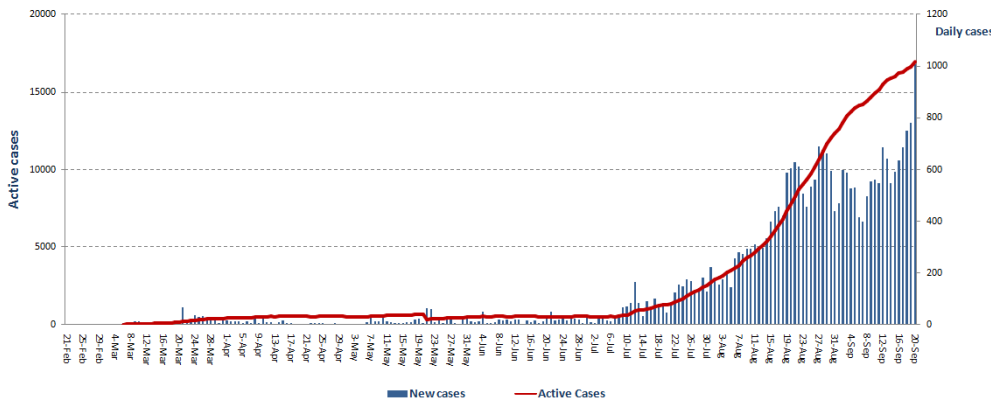
<b>12,047</b> Total Recoveries	<b>297</b> Total Death Since 21/2/2020	<b>1006</b> New Cases	<b>29,303</b> Total Cases Since 21/2/2020
<b>607</b> New Active	<b>11</b> New Deaths	<b>3</b> Expats	<b>1003</b> Locals
<b>446</b> Hospitalized	<b>123</b> Cumulative in ICU	<b>16,959</b> Active Cases	<b>843</b> Medical Staff Cases
<b>323</b> Mild Cases	<b>0</b> New Cases	<b>16,513</b> Home Isolation Cases	<b>8</b> New Cases
<b>Lebanon / Internationally</b>		<b>697,330</b> Conducted PCR Tests Since 21/2/2020	
<b>Registered</b>	<b>29,303</b>	<b>31,077,627</b>	
<b>Total Deaths</b>	<b>297</b>	<b>962,828</b>	
<b>Percentage of Deaths</b>	<b>1,01%</b>	<b>3,09 %</b>	
<b>Recoveries</b>	<b>12,047</b>	<b>22,666,713</b>	
		<b>2,492</b> Expats PCR Tests	<b>8,584</b> Locals PCR Tests

Source : Ministry of Public Health

\*The Above data was last updated at 10:00 PM

### Number of Cases by Location

- 6,178 case is Under investigation



Active case / Caza

- 0
- 1 - 10
- 11 - 100
- 100 - 200
- > 200

Beirut	Cases
Ras Beirut	1
Manara	7
Hamra	6
Raouche	7
Mseitbeh	1
Mazraa	8
Borj Abi Haydar	1
Tariq Jdeedeh	10
Ras El Nabeh	1
Achrafieh	12
Mar Elias	3
Tallet El Khayyat	3
Basta Tahta	1
Others	12
Baabda	Cases
Chiah	13
Jnah	4
Ouzai	5
Bir Hassan	1
Jamhour	1
Kfarshima	2
Ghobeiry	1
Ein El Rimmaneh	10
Furn El Chibbak	4
Haret Hreik	20
Laylaki	1
Borj El barajneh	11
Mreijeh	5
Hadat	23
Hazmieh	9
Baabda	12
Tahwetet El Ghadir	2
Bseba	8
Deir El Harf	1
Others	9
Chouf	Cases
Naameh	6
Ketermaya	1
Barja	3
Chehim	1
Anout	1
Simqaniyyeh	1
Kfarheem	1
Jiyyeh	4
Majdel El Maouche	1
Fawaret Jaafar	1
Wadi El Zayneh	2
Jahlieh	1
Baqaata	1
Others	1
Jezzine	Cases
Jezzine	1
Others	1

Matn	Cases
Borj Hammoud	6
Doura	3
Sin El Fil	8
Nabaa	2
Jesr El Bacha	1
Jdeidet El Metn	6
Sabtieh	4
Dekwene	10
Naqqash	5
Antelias	4
Sed El Baouchrieh	6
Zalka	4
Dbayeh	3
Mansouriyeh	13
Roumieh	3
Qornet Chehwan	2
Rabieh	1
Nabayh	3
Rabweh	3
Breije	1
Bekfayya	1
Bhersaf	1
Broumana	3
Beit Merry	2
Fanar	3
Bsalim	2
Others	1
Zahle	Cases
Bar Elias	7
El Forzol	1
Saadnayel	3
Terbol	2
Hoch El Oumara	2
Dalhamieh	1
Kfar Zabad	3
Taalabaya	4
Others	6
Akkar	Cases
Halba	3
Sheikh Taba	2
Kfar Harra	1
Akkar El Atika	2
Qabeet	1
Nahr El Bared	1
Fneidek	1
Bazzal	1
Jdeidet El Qayteh	1
Rayhaniyyeh	1
Others	4
Nabatieh	Cases
Harouf	1
Ansar	1
Others	2

Aleyh	Cases
EL Amrousiyyeh	1
El Oumara	2
Gabon	2
Soufar	1
Hay El Sillom	7
Aramoun	9
Khaldeh	6
Bshamoun	2
Azzounieh	1
Kahale	2
Others	2
Jbeil	Cases
Eddeh	4
Amchit	4
Halat	2
Jbeil	3
Qartaba	2
Mastita	2
Hbaleen	1
Hosrayel	1
Nahr Ibrahim	2
Others	7
Zghorta	Cases
Zghorta	2
Harf Erde	2
Majdlayya	1
Kfarshakhna	1
Ehden	1
Mezyara	1
Meryata	2
Helan	1
Others	6
Sour	Cases
Rasheedieh	1
Others	2
Koura	Cases
Kfar Akka	1
Dahr El Ein	7
Bsarma	1
Kosba	1
Anfeh	1
Ras Masqa	5
Touratej	3
Bdebba	1
Betroumeen	2
Deddeh	1
Barsa	2
Kafteen	1
Others	6
Baalbak	Cases
Baalbak	1
Arsel	1
Others	3

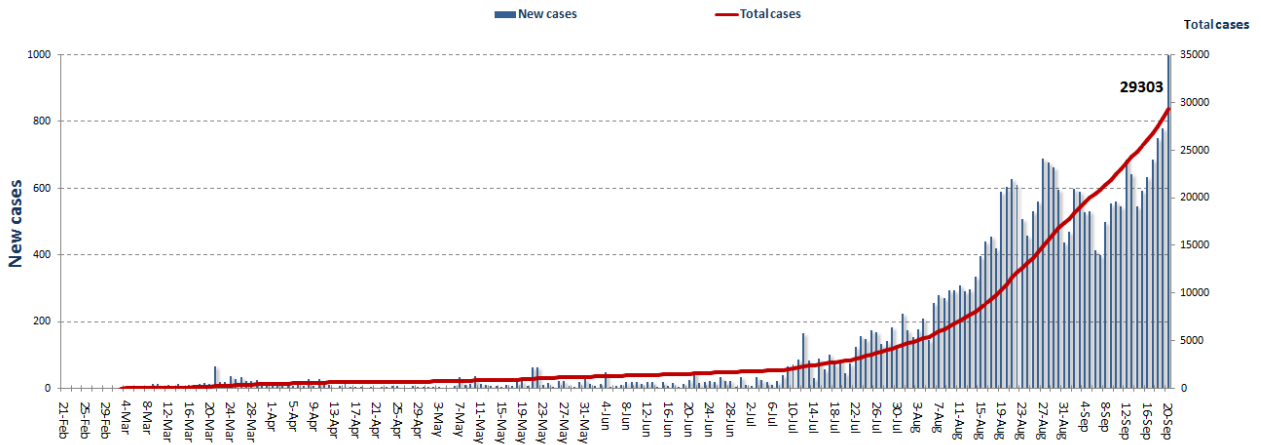
Saida	Cases
Bramieh	2
Haret Saida	1
Ein el Helwe	2
Qrayyeh	1
Baqсата	1
Abra	1
Ghassanieh	1
Others	21
Keserwan	Cases
Sarba	6
Zouk Michael	4
Kaslik	1
Ghadir	1
Adonis	2
Tabarja	1
Haret Sakher	4
Zouk Mosbeh	1
Bouar	1
Ajaltoun	2
Sehaileh	1
Ghazir	3
Shnaneer	2
Ghosta	1
Batha	2
Ghodras	1
Qatteen	3
Nammoura	1
Rayfoun	2
Ashkout	2
Raasheen	1
Bcharre	1
Others	2
Menyh Dniyyeh	Cases
Kaf El Malloul	1
Ezel	4
Mrah El Sreij	2
Menyeh	32
Bhannin	2
Seer IDuniyyeh	3
Bahsa	1
Bqarsouna	7
Markebta	1
Bakhoun	1
Tripoli	Cases
Qebbeh	17
Mina	77
Zahrieh	3
Tabbaneh	3
Qalamoun	4
Beddawy	10
Others	72

Bnt Jbeil	Cases
Rmeich	1
Aynata	1
Ein Ebel	2

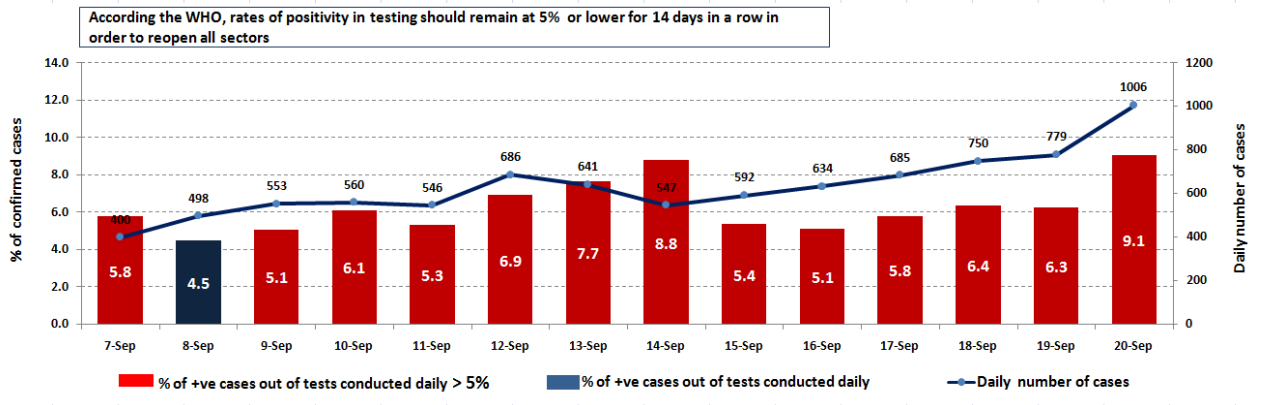
Beqaa El Gharby	Cases
Ammiq	1
Marjeyoun	Cases
Khiyam	1

Batroun	Cases
Shekka	1
Besbina	2
Others	1

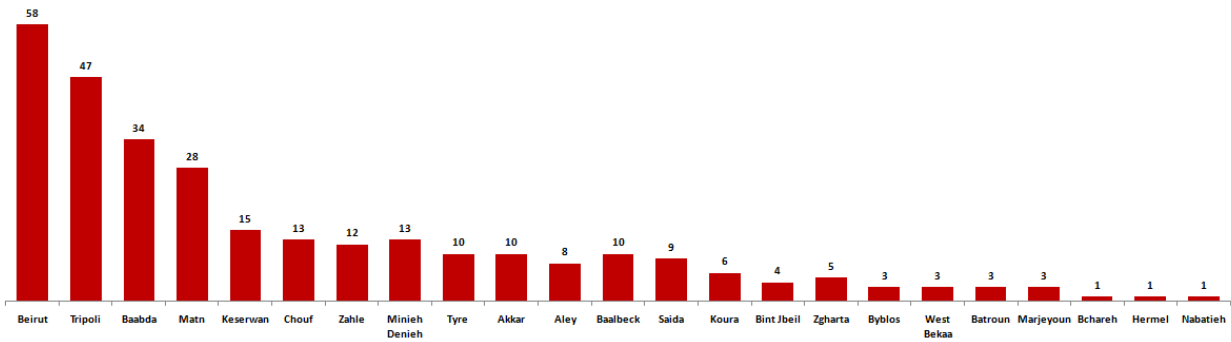
### Cases per day



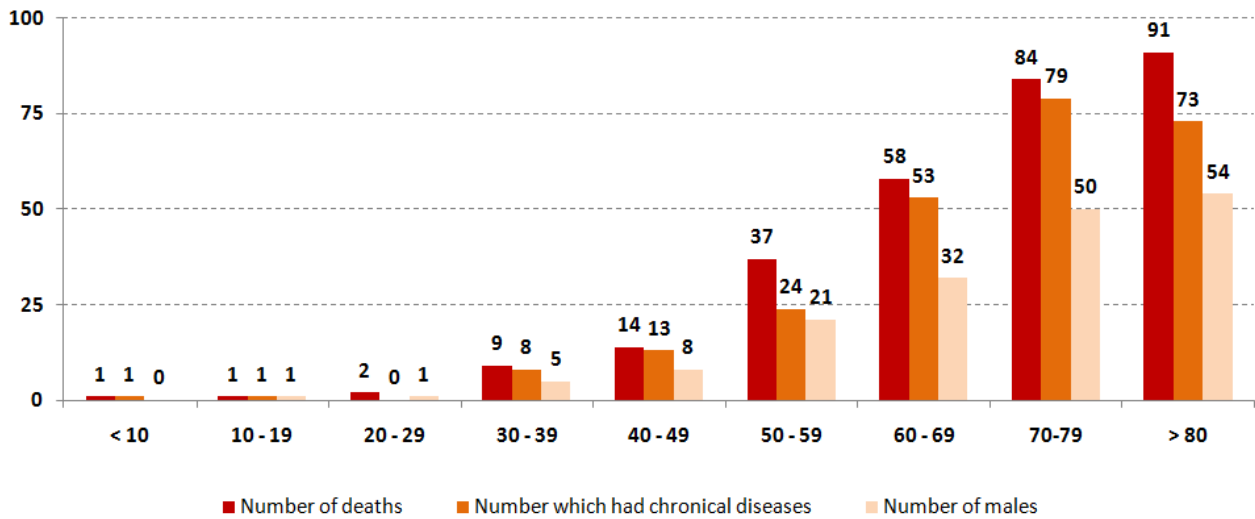
### The percentage of positive cases out of the number of daily checks (6 September to 19 September 2020)



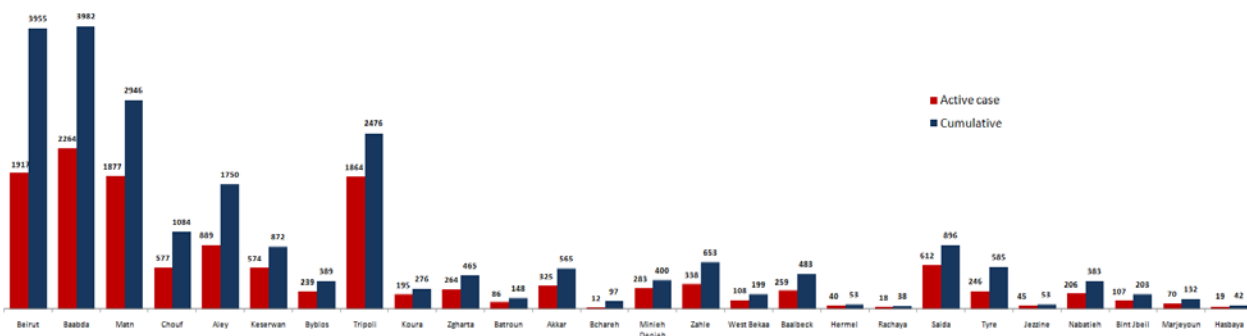
## Distribution of deaths by Governorates



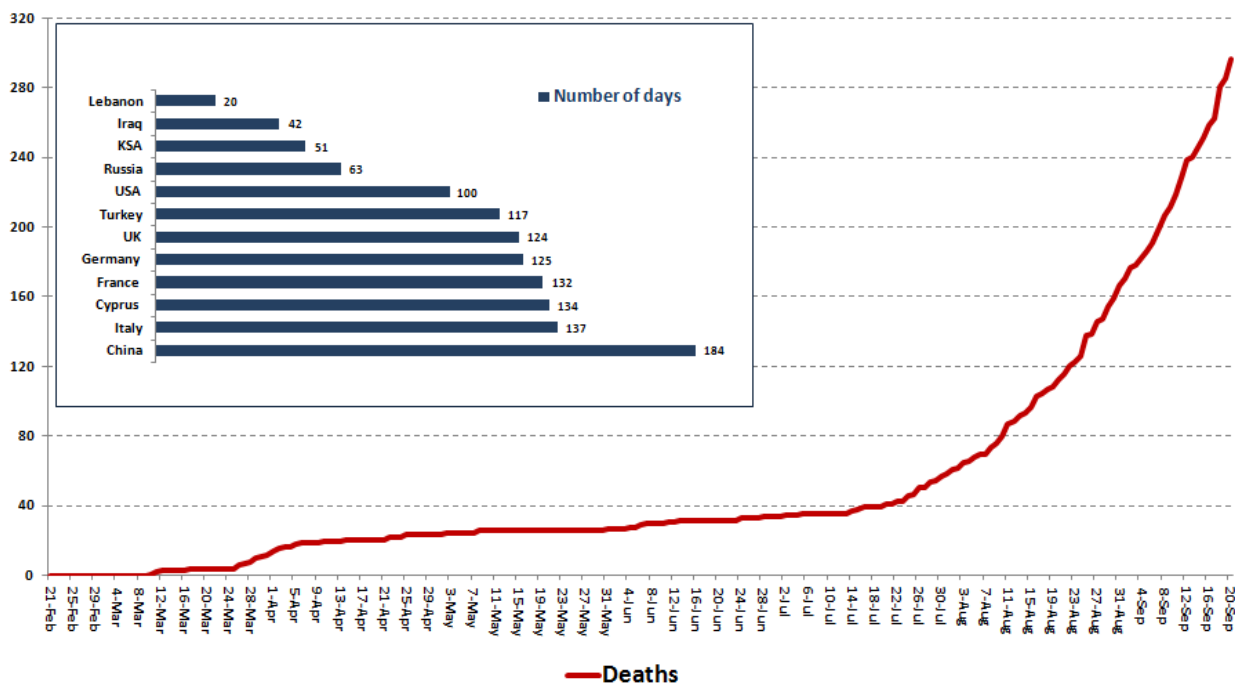
## Distribution of deaths by Age



## Distribution of Active Cases by Districts



## Comparison of the rate of doubling of the number of deaths in Lebanon with other countries (death doubling rate)

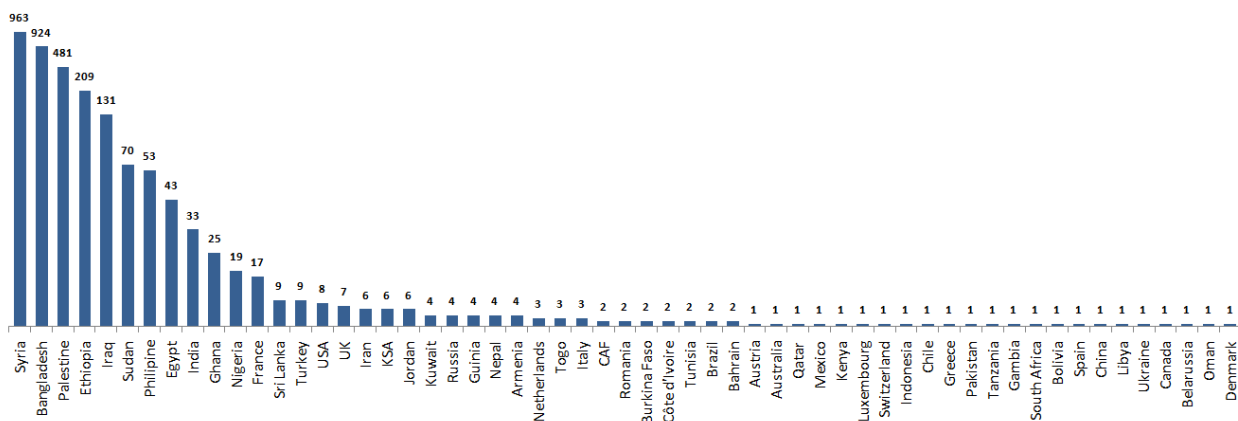


## The distribution of the recorded deaths during the past 24 hours

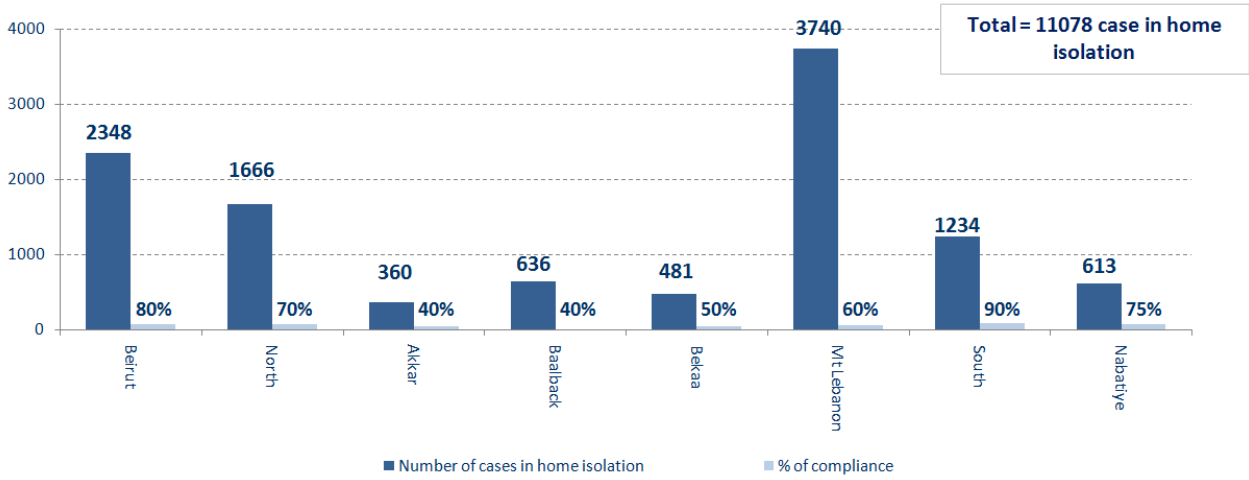
Hospital	Residence	Gender	Age	Chronic
El Nini	Tripoli	Male	78	Yes
El Nini	Tripoli	Male	65	Yes
Tripoli Gov.	Tripoli	Male	49	Yes
Tripoli Gov.	Minieh Denieh	Male	79	Yes
Tripoli Gov.	Zgharta	Female	72	Yes
Baalback Gov.	Baalback	Male	68	Yes
Tripoli Gov.	Tripoli	Male	54	Yes
Harire Gov.	Saida	Male	83	Yes
Home	Minieh Denieh	Male	90	
Harire Gov.	Baabda	Male	68	Yes
Saint George	Baalback	Male	58	Yes

## Distribution of cases by nationality

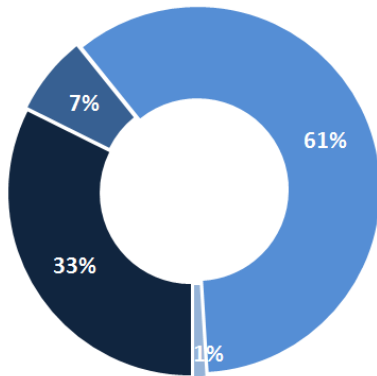
Lebanese : 26215 cases out of 29303 (88%)



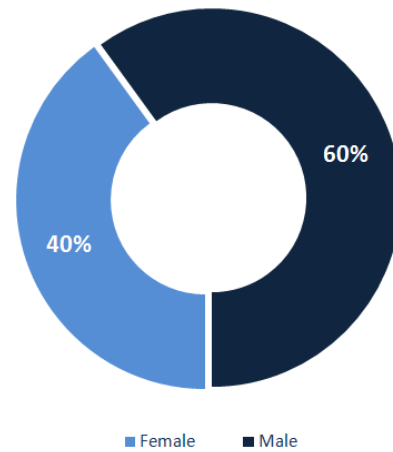
## Number of individuals in home isolation and percentage of commitment to isolation



## Exposure

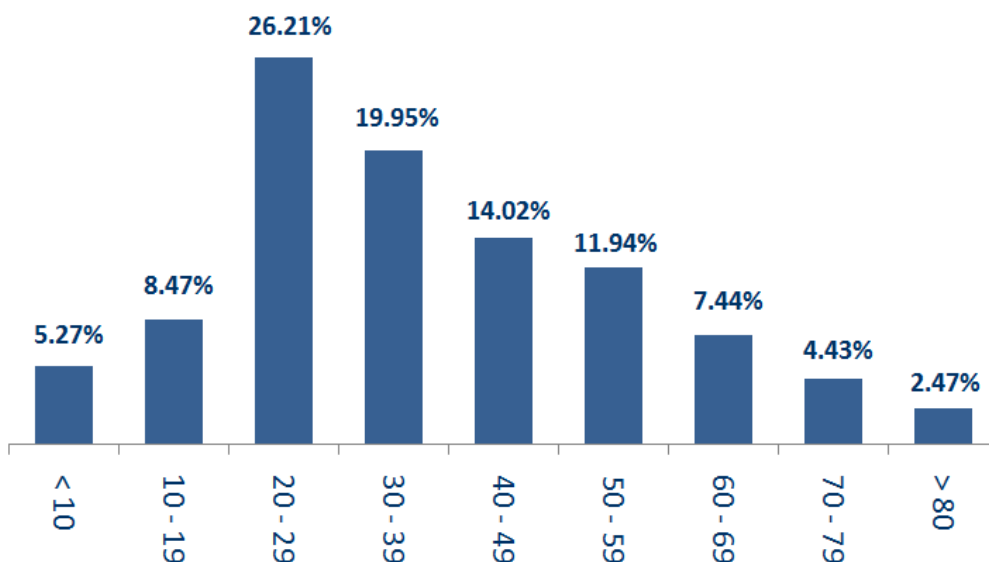


## Distribution according to gender



■ Contact with confirmed case ■ Travel related ■ Under investigation ■ Unidentified source

## Distribution by age



## The number of beds available for those infected with Coronavirus and the occupancy rate



For daily information on all the details of the bed distribution available for Covid-19 patients in the various governorates according to the hospitals

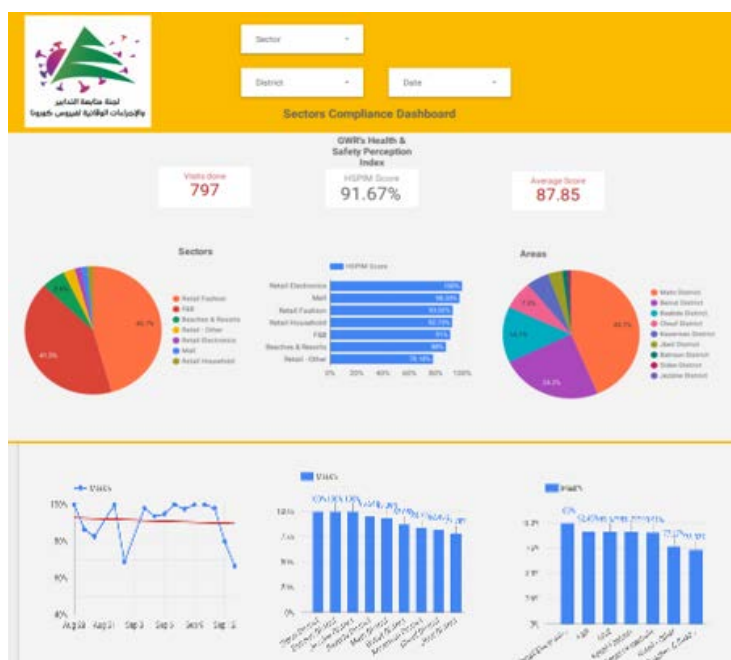
- Computer: <https://gisleb.cnrs.edu.lb/portal/apps/opsdashboard/index.html#/34b32db8030d4f229fc5db9ab686cca9>
- Mobile: <https://shorturl.at/cnqJ2>

## Online platform to track sector commitment in general mobilization procedures

Based on the recommendation issued by the National Committee for Follow-up of Preventive Measures and Measures to Confront the Coronavirus to open all sectors, provided that the general mobilization procedure (safe distance, muzzle, and hand sterilization) be applied, a special electronic platform was created that allows monitoring and measuring the percentage of commitment by various sectors on an ongoing basis.

The detailed results can be viewed directly at the following link:

<http://bit.ly/covidsectordata>



---

**Decisions and actions taken – 20/09/2020**

---



---

**Ministry of Public Health**

---

The Ministry of Public Health is working to develop a rapid response plan for prisons in Lebanon, after recording infections with the Coronavirus among prisoners, in cooperation between the Ministry and its partners in the health and humanitarian field, as the plan will include steps and escalatory measures based on the evaluation of the spread of the virus in a way that allows securing the required health and hospital accompaniment.

---

**Lebanese Red Cross**

---

228,082 (1355 New)	Number of PCR tests transferred to laboratories	44,979 (80 New)	Number of additional ambulance centers ready to respond	48	ambulance centers	5,028 (43 New)	cases transferred to hospitals
166	Number of volunteers trained to transfer PCR tests	1,498	Number of trained paramedics	8,591	total number of respondents	77,206	number of those benefiting from awareness *sessions
967	The number of university volunteers trained to follow up on prevention measures in companies and institutions	217	Number of university volunteers trained to conduct awareness sessions	550	total LRC volunteers for covid19	8,435 (5 New)	number of trained managers for isolation centers
4,205 (1 New)	Number of beneficiaries from educational electronic platforms COVID-19	89,817	Number of distributed equipment	1,236,031	total distributed posters, brochures, and flyers on covid19 prevention	521 (2 New)	number of prisons that have been disinfected



## General Directorate of State Security

- Investigating and following up on suspected and positive cases and cases in home quarantine for residents and expatriates.
- Sending warnings and closing a number of violating commercial stores in the various regions.

Beirut	South	North	Akkar	Beqaa	Nabateih	Baalbek Hermel	Mount Leb
N/A	53%	60%	N/A	N/A	50%	N/A	30%

## General Directorate of Internal Security Forces

- Internal Security Forces circulated the preventive measures that must be followed when traveling by cars and using shared transportation and public cars.
- Writing arrest records against violators of the general closure decision

The number of seizure records during the past 24 hours					The total number of records that have been organized against violators of the general mobilization decisions since 03/03/2020		
Written records of violating institutions (absorptive capacity and preventive measures)					3		
Written records of persons violating the decision to wear a mask					1	Beirut	20,639
Written records of people violating the general mobilization decision (Aragil* and social distancing)					19	Mount Leb	18,813
<b>Total</b>					<b>23</b>	Beqaa	8,030
						North	6,784
Beirut	Mount Leb	Beqaa	North	South	South	South	6,778
2	1	7	1	12	<b>Total</b>	<b>Total</b>	<b>61,044</b>

## Ministry of Public Works and Transportation

Departing Flights		Arriving Flights	
Number of Flights	39	Number of Flights	38
Number of Departing Individuals	4,321	Number of Arrivals	2,818

Port	Entered			Left			
	Import	Direction	#	Export	Direction	#	
Beirut	Containers	Russia	1	Containers	Alexandaria	1	
	Diesel	Aamchit	1			1	
	Containers	Port Said	1				
Tripoli	Blank	Cyprus	1				
Jbeil	Diesel	Beirut	1	Diesel	Tripoli	1	
			<b>5</b>				<b>3</b>

---

## General announcements

---

The following recommendations were issued by the Committee for Follow-up of Preventive Measures and Procedures for Coronavirus on 9/16/2020:

- That the Ministry of Public Health prepare a list of countries in which the PCR examination is considered reliable and approved in Lebanon, and another list of countries where this examination is not reliable and is not accredited in Lebanon.
- That the Ministry of Public Works and Transport circulate through the General Directorate of Civil Aviation to the concerned authorities the approved procedures as follows:

Countries where PCR testing is reliable and approved in Lebanon	Countries where PCR testing is considered unreliable and unsupported in Lebanon
<ul style="list-style-type: none"><li>- The expatriate's possession of a negative test result dating back to a maximum of 96 hours from the date of arrival in Lebanon.</li><li>- Choose to quarantine for a period of 9 days or re-examination after a period of 72 hours</li></ul>	<ul style="list-style-type: none"><li>- The expatriate's possession of a negative test result dating back to a maximum of 96 hours from the date of arrival in Lebanon.</li><li>- Perform a PCR examination upon arrival at Beirut International Airport.</li><li>- Commitment to quarantine for a period of 5 days (place of residence or hotel according to the approved instructions).</li><li>- Members of diplomatic missions accredited in Lebanon are exempt from conducting the examination upon arrival at the airport, provided that the examination procedure is performed after the five-day quarantine period has expired</li></ul>

- That the Ministry of Tourism circulate to restaurants, cafes, restaurants and tourism establishments full compliance with the Smoking Reduction Law No. 174/2011, while restricting the provision of hookahs to open spaces and adhering to all preventive measures circulated by the Ministry in this regard.
- Reopening of cinemas, theaters, amusement parks, parks and indoor spaces for children's games, provided that the occupancy rate of 50% as a maximum is adhered to and that all preventive measures and measures are adhered to.
- The Minister of Interior and Municipalities issued Decision No. 1129 of 9/17/2020 to amend the opening and closing times for industrial and commercial enterprises, as the timing of the prevention of exit and entry into the streets was kept between the first hour of midnight until six in the morning of every day, and approved the recommendations issued For the meeting of the Committee for Follow-up of Preventive Measures and Measures to Confront the Coronavirus on 9/16/2020.

**Note: The decisions can be found at [www.drm.pcm.gov.lb](http://www.drm.pcm.gov.lb)**

## Examples of lack of adherence to safety measures

- Demand gatherings and demonstrations.
- Failure to comply with the preventive measures and procedures required in a number of stores and markets (putting on a muzzle or face mask, sterilizing hands, maintaining a safe distance).
- Non-compliance with the 50% occupancy rate in several restaurants and amusement game centers.
- Gatherings for social events.
- Failure of those in contact with confirmed cases to adhere to home isolation procedures until the results of the laboratory tests are issued.

**If you feel any symptoms, call directly the hotline of the Ministry of Public Health: 1214 or 01/594459**

## A list of the laboratories accredited by the MoPH to conduct PCR tests

<b>Public Hospitals</b>			
Hospital Name	Location	Hospital Name	Location
Rafic Hariri University Hospital	Beirut	Bint Jbeil Governmental Hospital	Bint Jbeil
Tripoli Governmental Hospital	Tripoli	President Elias Hrawi Governmental Hospital	Zahle
Fattouh Keserwan Governmental Hospital	Kesrwen	Batroun Governmental Hospital	Batroun
Baalbek Governmental Hospital	Baalbek	Halba Governmental Hospital	Halba
Tibnin Governmental Hospital	Tibnine		
<b>Private Hospitals</b>			
Hospital/Lab Name	Location	Hospital/Lab Name	Location
AUBMC	Beirut	MLH	Baabda
Saint George Hospital	Beirut	Saint Georges Hospital	Baabda
Hôpital Notre Dame des Secours (CHU – NDS)	Jbeil	Ain w Zein Hospital	Chouf
HDF/Merieux/USJ	Beirut	Hamoud Hospital	Sidon
Makkassed General Hospitals	Beirut	Dar el Amal Hospital	Baalbek
LAUMC	Beirut	Sheikh Ragheb Harebb Hospital	Nabatieh
Wardieh Hospital	Beirut	Al Hadi Laboratory	Baabda
Al Mathlum Hospital	Tipoli	Akiki Laboratory	Byblos
Al Mounla Hospital	Tripoli	MDC	Tyr
Haykal Hospital	Koura	Jabal Amel Hospital	Tyr
Serhal Hospital	Metn	Doctor's Center	Beirut
HLG	Beirut	KML	Sidon
SDC	Nabteih	ADC*American Diagnostic Center	Beirut
INOVIE Laboratory	Baabda	Khoury Hospital	Zahle
TRANSMEDICAL Laboratory	Metn	Sacre Coeur	Hazmieh
MCC	Zahle	BELLEVUE Hospital	Mansourieh
CHN	Zaghrta	LMSE	Tripoli
Clinigen Laboratory	Hazmieh	Al Rasoul Al Aazam Hospital	Beirut
Centre Medical Moderne	Ghbraye	Nabni Hospital	Tripoli
MDTC	Hamra		

**Note: Some positive test results are sent from the highlighted laboratories to the Ministry of Public Health, that does not include a phone number to track cases, which contributes to the spread of the epidemic and unknown cases**