



Lebanon National Operations Room Daily Report on COVID-19

Tuesday, October 20, 2020

Report #216

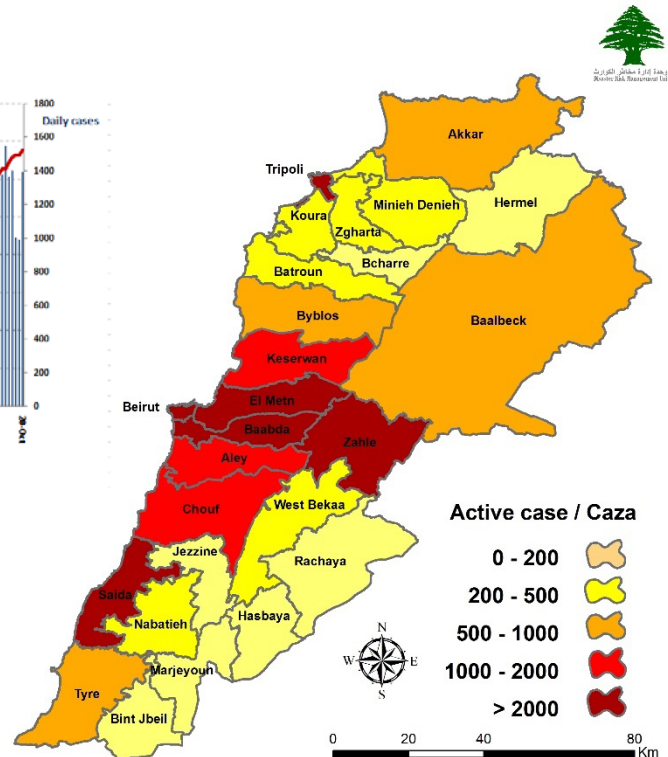
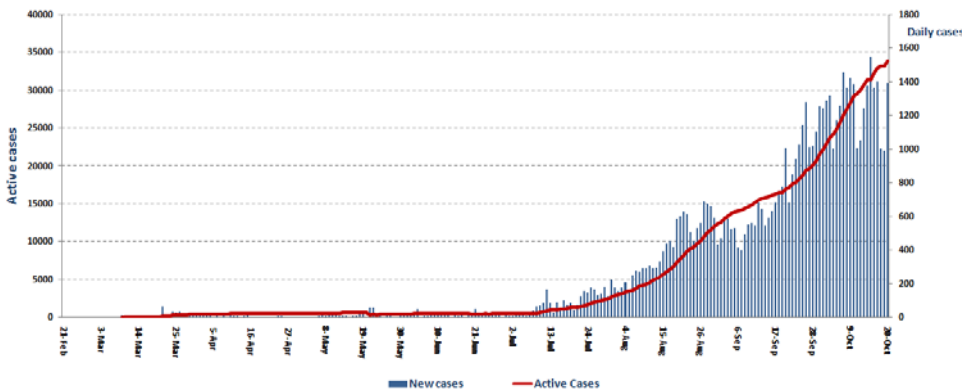
Time Published: 10:30 PM

1,392 New Cases		64,336 Total Cases since 21.2.2020		531 Total Deaths		29,625 Total Recovered	
1,312 Residents	80 Expats	62,246 Residents	2,090 Expats	5 New Deaths		670 New Recovered	
250 Deleted status due to its recurrence		1,296 Total Cases in the Health Sector		34,180 Total Active Cases		643 Hospitalized Cases	
		7 New Cases in the Health Sector		33,537 Cases in Home Isolation		432 Mild Cases	
						211 Total Cases in ICU	
						0 New Cases in ICU	
1,031,327 COVID-19 Tests since 21.2.2020		Lebanon Status compared to the World					
824 COVID-19 Tests at Airport within 24 hrs.		11,878 COVID-19 tests for residents within 24 hrs.		Total Cumulative		64,336	
				Total Deaths		531	
				Deaths percentage		0,82%	
				Total recoveries		29,625	
						40,888,114	
						1,126,527	
						2.75%	
						30,391,667	

Ref: Ministry of Public Health Data

Number of Cases by Location

- 10,889 case is Under investigation



Beirut	151
Ras Beirut	1
Manara	2
Raouche	8
Hamra	7
Ein Al Teeneh	2
Mseitbeh	4
Mar Elias	3
Mina Al Hosn	1
Mazraa	2
Borj Abi Haidar	1
Tariq Al Jdeedeh	3
Ras Al Nabaa	7
Basta Tahta	1
Ashrafieh	14
Others	95
Baabda	225
Chiah	15
Jnah	3
Bir Hassan	3
Ghobeiry	6
Ein Al Rimmaneh	14
Forn El Shebbak	3
Haret Hreik	21
Lailaki	7
Borj Al Brajneh	14
Mreijeh	6
Tahweetet ghadir	9
Baabda	2
Hazmieh	10
Fayadieh	1
Yarze	1
Hadat	29
Botchay	1
Jumhour	4
Kfarshima	9
Shahrour Al olya	5
Hlalieh	1
Arayya	1
Jumhour	1
Rweisat Salima	1
Chebanieh	1
Others	57
Tripoli	78
Zahrieh(Matn)	1
Al Haddadeen	1
Qebbeh	3
Zahrieh	4
Mina 1	7
Bsatine Al Mina	5
Qalamoun	1
Beddawy	4
Beddawy Camp	2
Others	50
Rashayya	1
Others	1

Aleyh	57
Kfarshima	1
Dekweneh	1
Al Amroussieh	1
Hay El Sillom	8
Khaldeh	2
Al Oumara	8
Deir Qoubel	1
Aramoun	7
Bshamoun	3
Bleibel	1
Aley	1
Kahale	3
Qmatieh	1
Ein Al Rimmaneh	1
Ein Al Jdeedeh	1
Baysour	1
Bhamdoun Day'aa	1
Sharoun	1
Btater	1
Maasreity	1
Others	12
Keserwan	46
Zouk Mikhael	6
Ghadir	1
Zouk Mosbeh	9
Haret Sakher	1
Sahel Alma	1
Adma & Dafneh	4
Safra	2
Ajaltoun	2
Ballouneh	6
Sheileh	2
Ein Al Rayhaneh	1
Ghazir	1
Kfar Hbab	1
Ashkout	1
Others	8
Byblos	34
Byblos	7
Blat	4
Halat	5
Meshmesh	1
Mayfouk	1
Hboub	3
Wata Al Kherbeh	1
Tartej	1
Others	11
Menyeh Duniyyeh	16
Beit Aoukar	1
Menyeh	10
Seer Al Dunniyyeh	1
Aasoun	1
Haql Al Azeemeh	1
Bakh'oun	2

Koura	23
Kfar Aqqa	1
Beshmezzine	1
Dar Baashtar	1
Bahboush	1
Kosba	1
Kfar Qahel	1
Ras Masqa	1
Dahr Al Ein	6
Barsa	2
Nakhle	2
Haret Al Khasseh	1
Others	5
Zghorta	12
Zghorta	2
Rasheen	1
Haref (Erdeh)	2
Majdlayya	1
Haret Al Fouwar	1
Aqbeh	1
Ayto	1
Meryata	2
Mazraet Hrayqes	1
Batroun	7
Batroun	1
Shekka	2
Ras Nhash	3
Others	1
Akkar	22
Mezyara	1
Menyara	1
Mashha	1
Bezbina	1
Old Akkar	1
Tal Maayan	1
Kfar Melky	1
Qleiaat	1
Mhammara	1
Khan Al Hayyat	1
Jdeidet Al Qaytaa	1
Rahbe	2
Beere	1
Others	8
Zahle	55
Forzol	1
Ksara	1
Bayada (zebdel)	1
Jdita	1
Terbol	1
Others	50
Western Beqaa	6
Others	6
Baalbek	40
Doures	1
Tarayya	1
Others	38

Matn	218
Borj Hammoud	25
Sin El Fil	8
Horsh Tabet	1
Jesr Al Basha	5
Jdeidet El Metn	5
Bouchrieh	4
Dora	2
Rawda	7
Sed Al Bouchrieh	3
Sabtieh	4
Dekwene	19
Antelias	4
Jal El Dib	3
Naqqash	2
Zalqa	5
Byaqout	6
Dbayyeh	3
Mansourieh	17
Fanar	10
Fanar Al Jdeedeh	1
Ein Saadeh	2
Roumieh	2
Bsalim	4
Mteileb	1
Rabwe	2
Beit Al Chaar	2
Bekfayya	1
Beit Shabab	1
Atshana	2
Broummana	1
Baabdat	1
Beit Mery	3
Montiverde	1
Dhour El Choueir	1
Zouk Mosbeh	1
Others	59
Chouf	48
Damour	4
Naameh	4
Chhim	6
Daraya	4
Sibline	2
Barja	5
Marj Barja	1
Mgheirieh	1
Baaqleen	1
Jahlieh	1
Niha	3
Others	16
Bcharre	3
Hadath Al Jebbe	1
Hassroun	1
Others	1

Saida	70
Haret Saida	2
Ein Al Helwe	8
Aabra	5
Ghazieh	5
Maghdoushe	2
Darb AL Seem	1
Zeeta	1
Arzy	1
Zrariah	1
Sarafand	2
Others	42

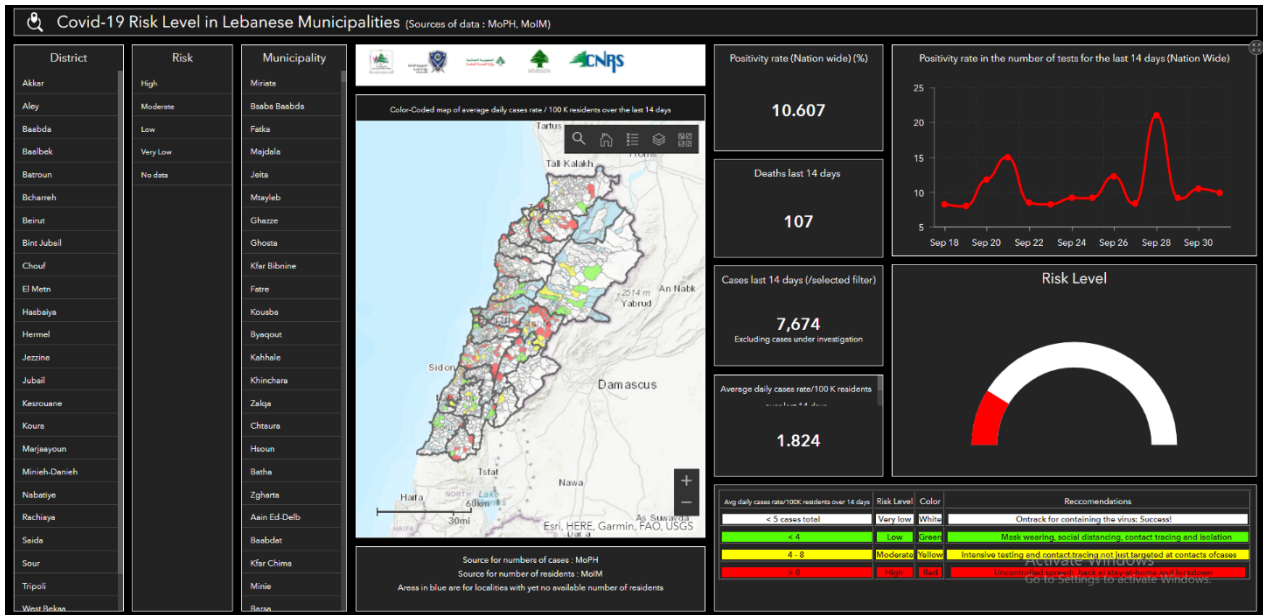
Tyre	4
Ramiah	1
Jmeijmeh	1
Shaqra	1
Others	1
Marjeyoun	8
Ebl Al Saqy	1
Khiyam	1
Deir Seryan	3
Mays Al Jabal	1
Others	2
Hasbaya	5
Hasbaya	1
Others	4

Nabateih	24
Al Tahta	1
Nabatieh Fawka	1
Shoukine	1
Habbouch	2
Arab Saleem	1
Harouf	1
Dweir	2
Jebshit	1
Ansar	2
Qseibeh	1
Western Seer	3
Others	8

Tyre	50
Borj Al Shemaly	3
Qanoun Al Ein	1
Yanouh	1
Maaroub	1
Reshknanieh	1
Saddiqeen	2
Bazourieh	1
Teir Debba	1
Abbasieh	1
Others	38

Others	183
--------	-----

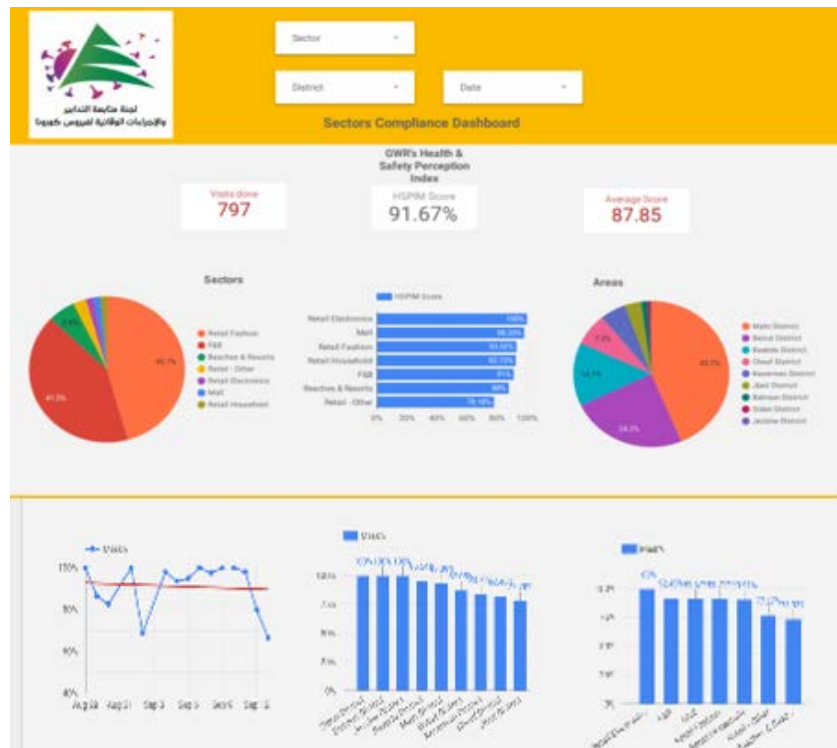
The Online platform to measure the level of risk of the spread of the new Corona virus



This interactive platform allows you to know the level of risk of spreading the kurna virus according to districts, based on the number of cases registered daily and the number of residents in each district. For more information on a daily basis, you can access the following link:

<https://bit.ly/DRM-RiskLevelInMunicipalities>

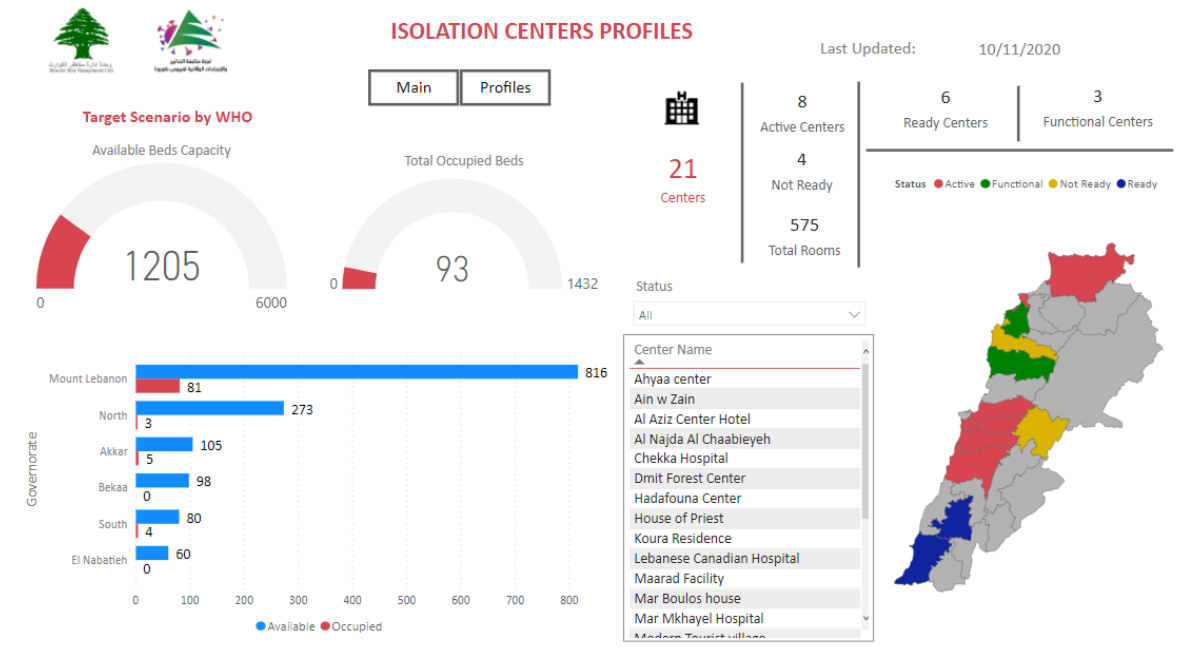
Online platform to track sector commitment in general mobilization procedures



Based on the recommendation issued by the National Committee for Follow-up of Preventive Measures and Measures to Confront the Coronavirus to open all sectors, provided that the general mobilization procedure (safe distance, muzzle, and hand sterilization) be applied, a special electronic platform was created that allows monitoring and measuring the percentage of commitment by various sectors on an ongoing basis. The detailed results can be viewed directly at the following link:

<http://bit.ly/covidsectordata>

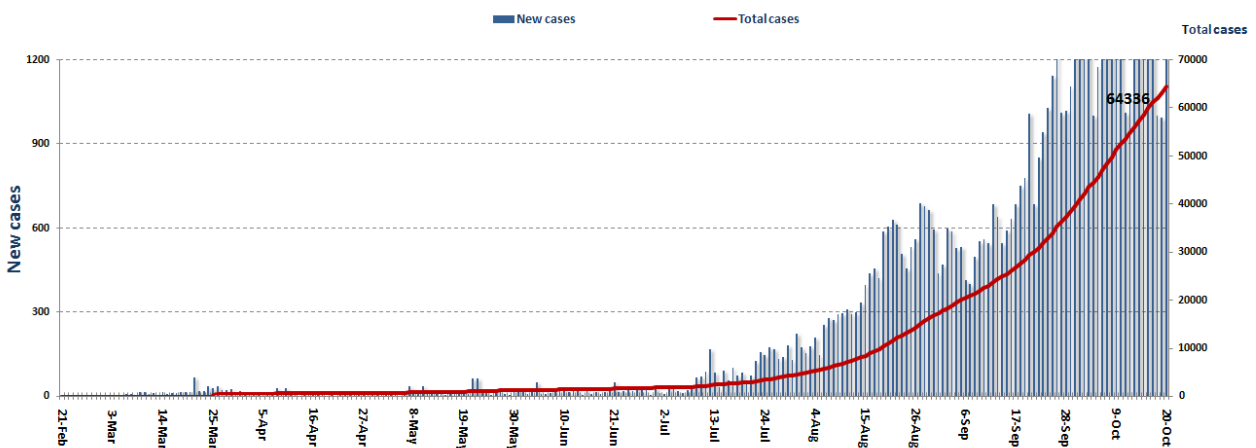
Occupancy rate of isolation centers for cases infected with Coronavirus



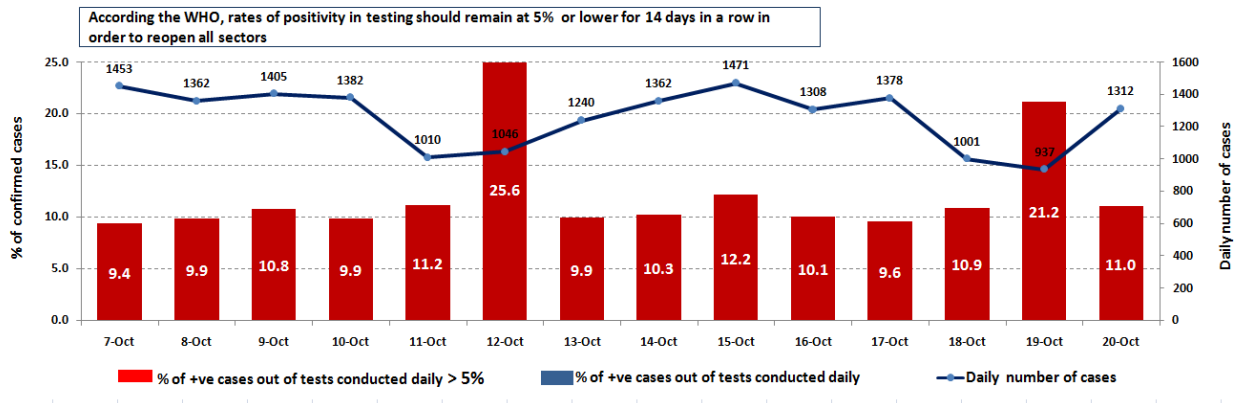
For more information about the isolation centers' distribution and the percentage of their occupancy, enter the following link: <http://bit.ly/DRM-IsolationCentersProfiles>

Note: These centers have been equipped in cooperation between the National Committee for Follow-up of Preventive Measures and Measures to Confront the Coronavirus and Governors and Municipalities, the United Nations Development Program, the World Health Organization, UNICEF, the Ministry of Public Health, the Syndicate of Nurses in Lebanon and the Syndicate of Specialists in Social Work.

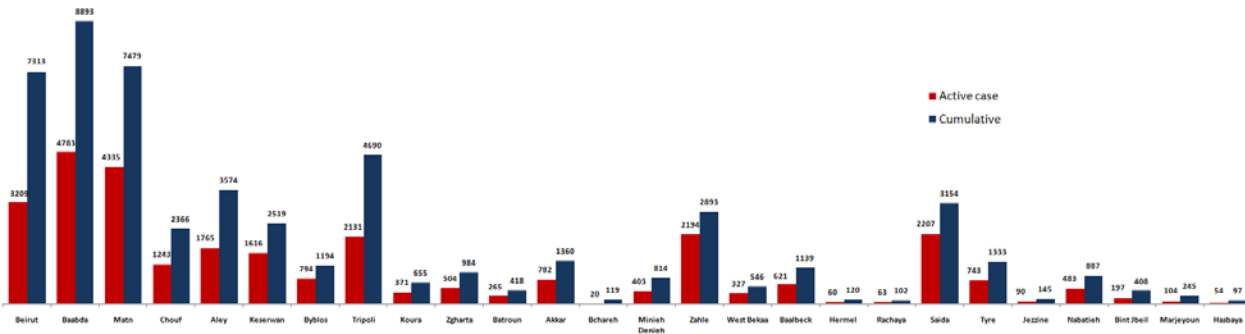
Cases per day



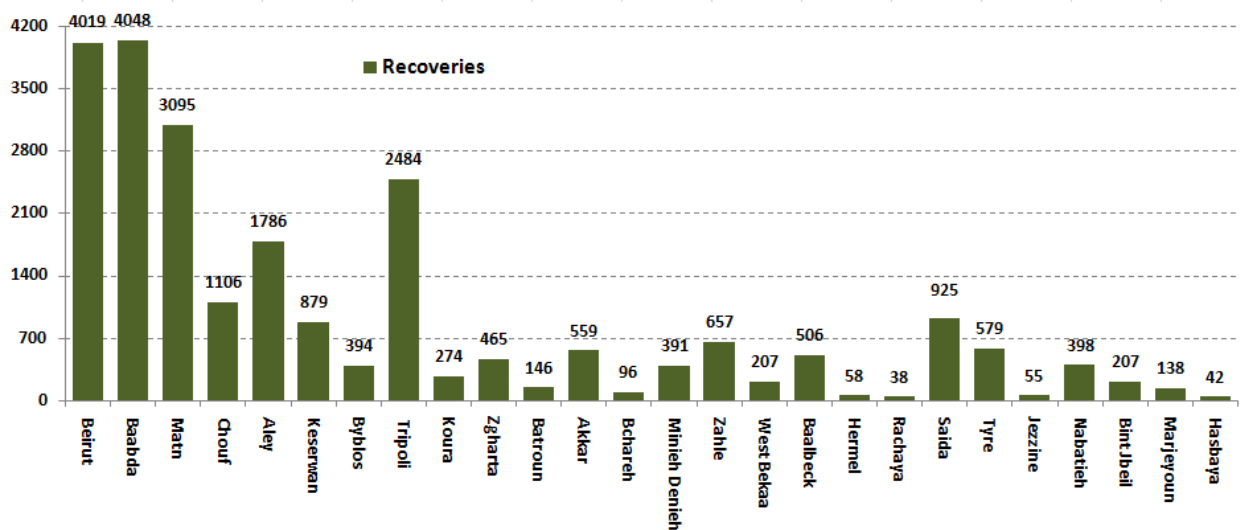
The percentage of positive cases out of the number of daily checks (7-20 October 2020)



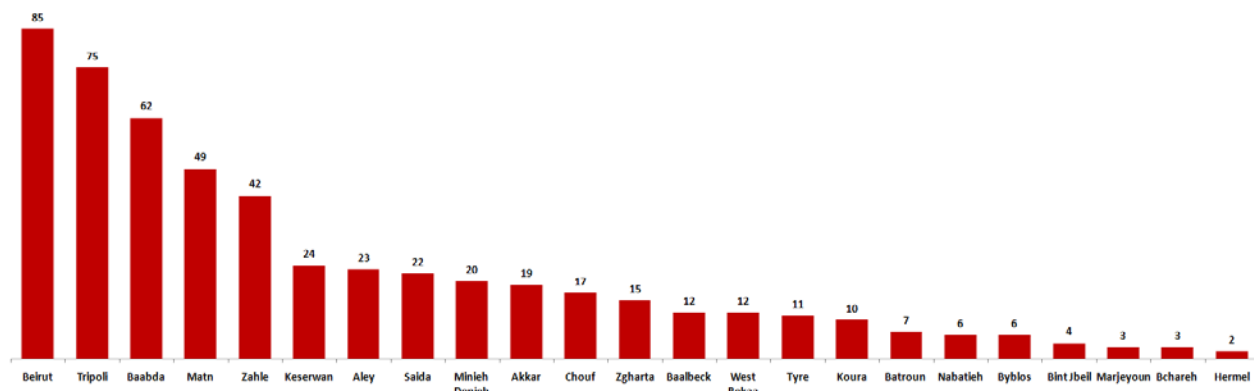
Distribution of Active Cases by Districts



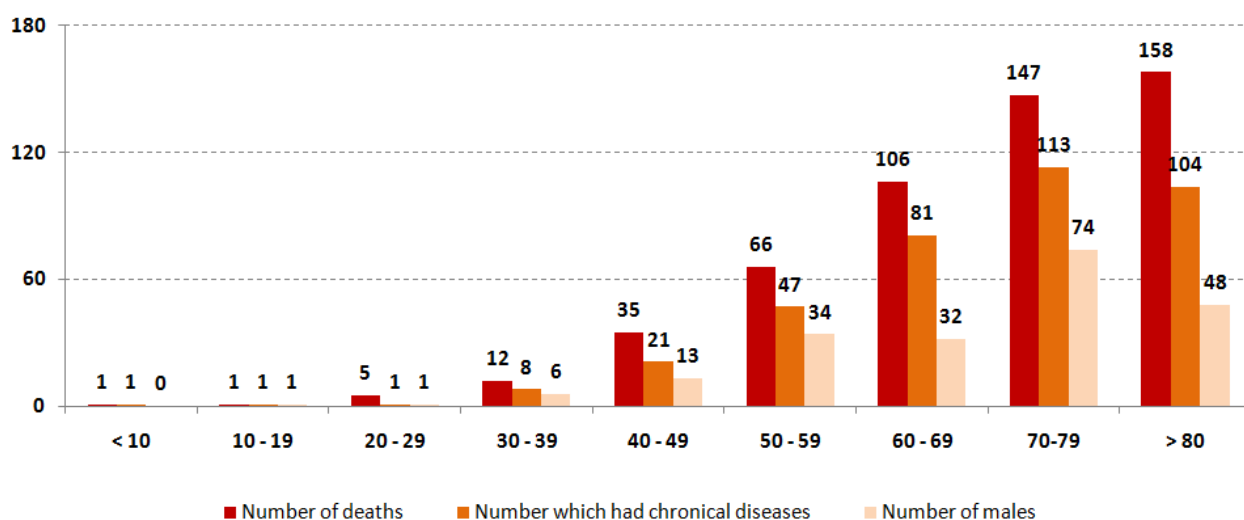
Recoveries



Distribution of deaths by Governorates



Distribution of deaths by Age

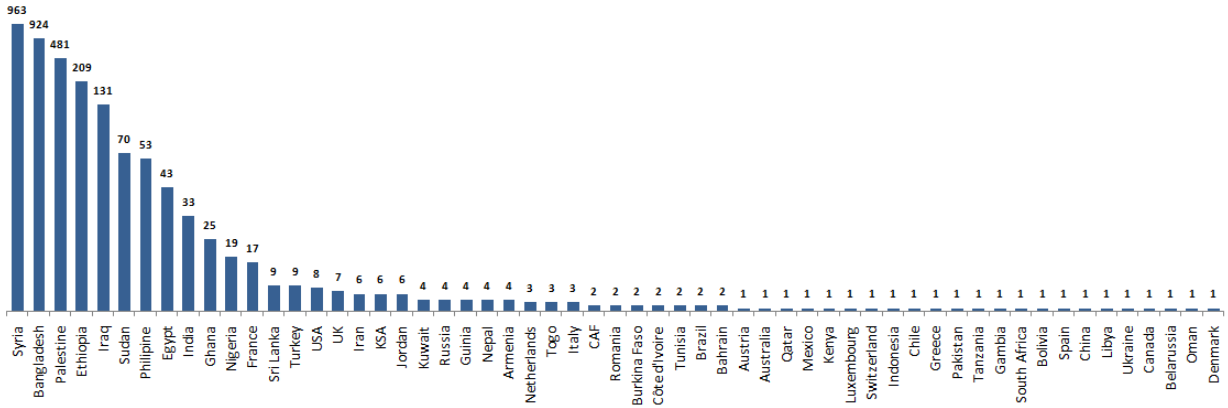


The distribution of the recorded deaths during the past 24 hours

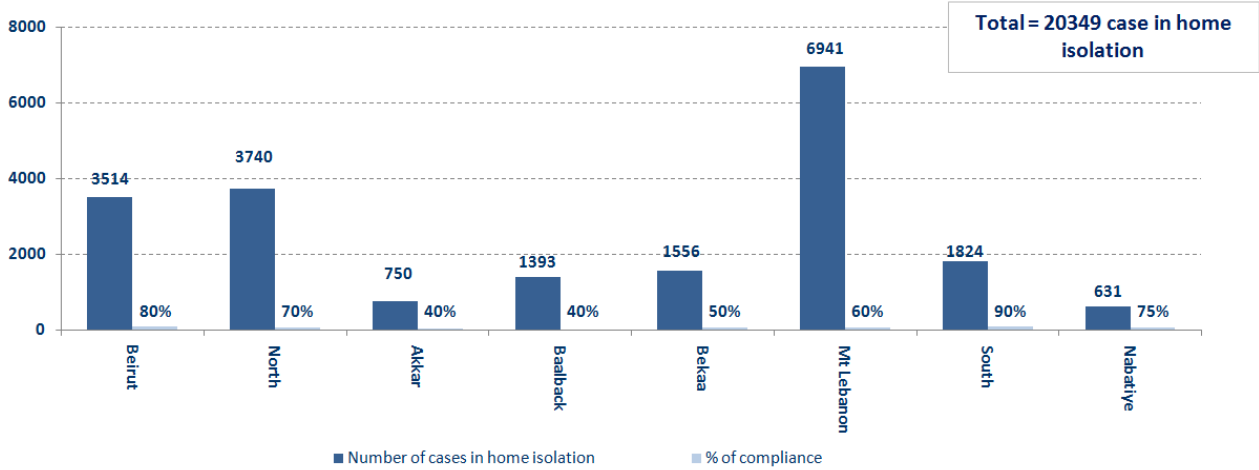
Hospital	Residence	Gender	Age	Chronic
Tripoli Gov Hospital	Tripoli	Male	75	Yes
Rassoul Aazm Hospital	Beirut	Female	85	Yes
Saint George -Hadath	Matn	Female	81	-
Rizk Hospital	-	Female	89	Yes
AUBMC	Beirut	Male	78	-

Distribution of cases by nationality

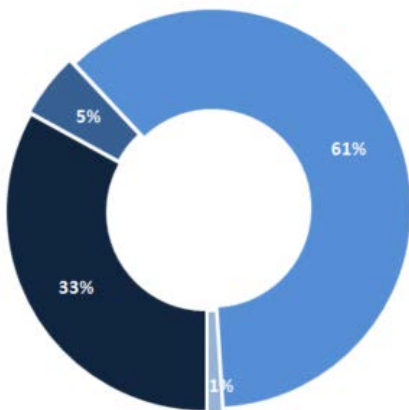
Lebanese : 59417 cases out of 64336 (88%)



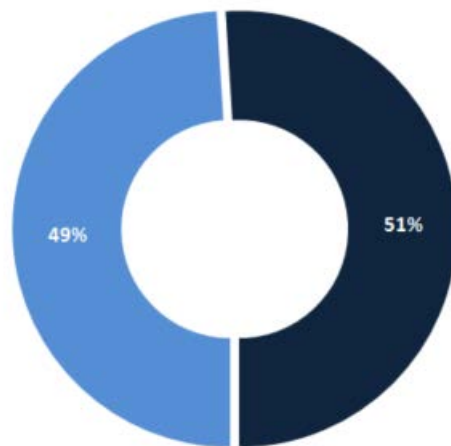
Number of individuals in home isolation and percentage of commitment to isolation



Exposure



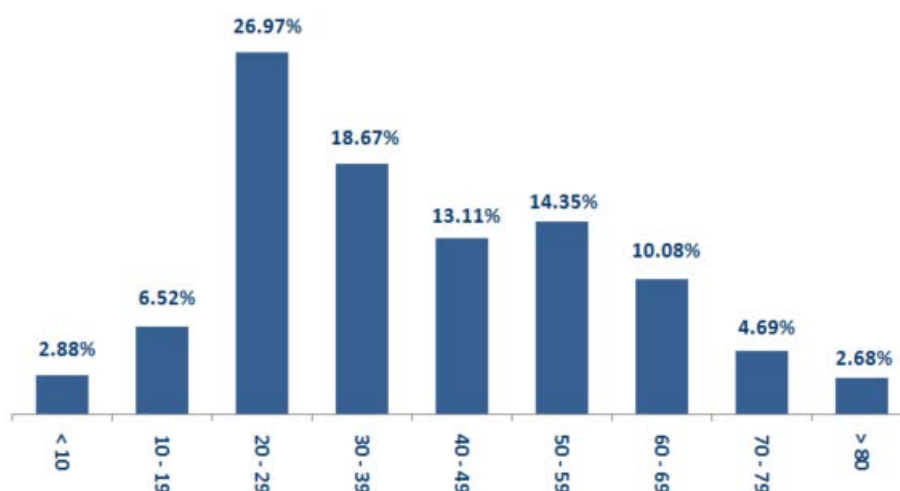
Distribution according to gender



■ Contact with confirmed case ■ Travel related ■ Under investigation ■ Unidentified source

■ Female ■ Male

Distribution by age



Decisions and actions taken – 10/20/2020

Ministry of Public Health

- The Ministry of Public Health has reminded that all travelers coming to Lebanon must register on the Ministry of Public Health's COVID-19 MOPH PASS electronic platform and ensure the correctness of the information before sending it to enable the Ministry's work team to follow up their health status via the following link:
<https://arcg.is/0GaDnG>

- The Ministry of Public Health stated that every hospital that provides an intensive care room for people with Coronavirus will benefit from respirators that the Ministry works to secure for hospitals.

- Within the framework of implementing its strategy to confront the second stage of the outbreak, and in accordance with the recommendations of the National Committee for Follow-up of Preventive Measures and Procedures for Coronavirus, the Ministry is intensifying campaigns to conduct PCR examinations in various Lebanese regions, especially in the villages and towns that record increasing numbers of infections and which are included in the closure decision No. 1258/2020 issued by the Ministry of Interior and Municipalities. The Ministry is also closely following the measures implemented by the municipalities in order to limit the spread of the virus locally, in coordination with the doctors in the districts and the security services.

Arriving from	Company	Flight Number	Number of Positive Cases
N/A			
Total			

Lebanese Red Cross

235,498	Number of PCR tests transferred to laboratories	51,034 (189 New)	Number of additional ambulance centers ready to respond	48	ambulance centers	6,651 (42 New)	cases transferred to hospitals
166	Number of volunteers trained to transfer PCR tests	1,498	Number of trained paramedics	8,760	total number of respondents	87,491 (741 New)	number of those benefiting from awareness *sessions
967	The number of university volunteers trained to follow up on prevention measures in companies and institutions	291	Number of university volunteers trained to conduct awareness sessions	550	total LRC volunteers for covid19	8,646	number of trained managers for isolation centers
4,314 (19 New)	Number of beneficiaries from educational electronic platforms COVID-19	128,772	Number of distributed equipment	1,242,780	total distriibuted posters, brochures, and flyers on covid19 prevention	569 (8 New)	number of rpisons that have been disinfected

General Directorate of Internal Security Forces

The number of seizure records during the past 24 hours					The total number of records since 03/08/2020		
Written records of violating institutions (absorptive capacity and preventive measures)					10		
Written records of persons violating the decision to wear a mask					0	Beirut	21,189
Written records of people violating the general mobilization decision (Aragil* and social distancing)					417	Mount Leb	20,245
Total					427	Beqaa	8,653
						North	7,488
Beirut	Mount Leb	Beqaa	North	South	South	7,686	
92	175	55	25	80	Total	65,261	

General Directorate of State Security

- Reporting that two members of the General Directorate of State Security were infected with the Coronavirus, and they are under home quarantine. Reporting the percentage of compliance with the general mobilization decision in the governorates, which came as follows within the past 24 hours:

Beirut	South	North	Akkar	Beqaa	Nabateih	Baalbek Hermel	Mount Leb
50%	49%	60%	55%	75%	85%	10%	50%

General Directorate of General Security

The report of two deaths in the towns of Achkout and Jbeil, with the Coronavirus.

- Reporting the commitment of the municipalities to the decision of the Minister of Interior and Municipalities:

Municipalities that abided by the decision	Municipalities didn't abide by the decision
Anqat, Majdala, Kobayat, Bhamdoun, Azounieh, Kahla, Aley, Al-Warhaniya, Baakline, Jadidat Al-Shouf, Ain Zahla, Al-Barouk, Houmal, Blaybel, Badadoun, Bchamoun, Haris, Mimis, Kfar Zabad, Hosh Halan, Farzol, Niha, Qaa Al-Reem, Saadnayel, Taalabaya, Ablah, Bar Elias, Chtaura, and Bareges	Al-Majdal, Al-Aboudieh, Al-Muhammarah, Ketermaya, Mazboud, Shehim, Barja, Jadra, Jiyeh, Damour, Naameh, Haret Al-Naameh, Kfarhim, Deir Al-Qamar, Batalloun, Batma, Niha, Kafr Nabarkh, Al-Khuraybah

- Follow up the implementation of the required security and preventive measures at the airport, ports and border crossings.
- Reporting cases registered in the various districts and cases in home quarantine.

Ministry of Public Works and Transportation

Departing Flights		Arriving Flights	
Number of Flights	40	Number of Flights	41
Number of Departing Individuals	3,940	Number of Arrivals	3,276

Port	Entered			Left		
	Import	Direction	#	Export	Direction	#
Tripoli	Chemicals	Malta	1			
Beirut	Cattles	Cattles	1	Blank	Kartaja	1
Total			2			1

General announcements

- The Minister of Interior and Municipalities issued Decision **No. 1258 on 10/18/2020** regarding the continued closure of some villages and towns due to the high number of corona infections in them, based on the recommendations of the small committee affiliated to the Committee for Follow-up of Preventive Measures and Procedures for Coronavirus. The main highlights of the decision:

- The closure of the towns listed in the decision starting from 6:00 a.m. on Monday 10/19/2020 until 6:00 a.m. on Monday, 10/26/2020, provided that work stops in all official and private administrations and institutions within those villages and cancellation All social events, parties, parties and gatherings of all kinds, and coordination with the clergy to close the places of worship, and this decision specified the sectors excluded from the closure decision.
- Keeping work at the time of preventing exit and entering the streets and roads between the first hour of midnight until six in the morning.
- Determining the number of people traveling by public and private transport (3 people in public cars, 4 people in private cars, half the carrying capacity of common transport vehicles and buses).
- A complete closure until further notice, and without any exceptions, for all bars, cabarets and nightclubs all over the Lebanese territories, under penalty of referring the violators to the competent court.
- The commitment of citizens in all regions to wear a mask, maintain safe distances, and avoid overcrowding when forced to move.
- The decision to open or close educational institutions and administrative units of the Ministry of Education and Higher Education in unlocked towns and villages is limited to the Minister of Education and Higher Education.
- Assigning governors to determine the municipal zone in the major towns included in the decision and overlapping with other towns, taking appropriate measures to implement the content of the decision and requesting the support of the security forces when necessary, stressing citizens in villages and towns that will be closed with the necessity to remain in homes and not to walk around and to wear a muzzle when Forced mobility, asking the district administrators to instruct the mayors to review the daily lists of positive cases that are sent to them via the IMPACT platform to check them and correct their data as soon as they are received, and to assign them to supervise this task in coordination with the Judicial Doctor and the Lebanese Red Cross.
- Assigning the General Directorate of Internal Security to strictly enforce this decision and suppress violations and organize seizure records against violators

Note: The decisions can be found at www.drm.pcm.gov.lb

Examples of lack of adherence to safety measures

Failure of some municipalities to abide by the Ministry of Interior and Municipalities Decision No. 1025/2020 related to the closure of towns that have a high risk of the spread of the epidemic.

- Demand gatherings and demonstrations.
- Failure to comply with the preventive measures and procedures required in several stores and markets (putting on a muzzle or face mask, sterilizing hands, maintaining a safe distance).
- Non-compliance with the 50% occupancy rate in several restaurants and amusement game centers.
- Gatherings for social events.
- Failure of those in contact with confirmed cases to adhere to home isolation procedures until the results of the laboratory tests are issued.

If you feel any symptoms, call directly the hotline of the Ministry of Public Health: 1214 or 01/594459

A list of the laboratories accredited by the MoPH to conduct PCR tests

المختبرات الحكومية المؤهلة لإجراء التشخيص المخبري لفيروس كورونا بطريقة الـ RT-PCR

المختبر	الموقع
مستشفى رفيق الحريري الجامعي RHUH	بيروت
مستشفى حيا الحكومي	حيا
مستشفى طرابلس الحكومي	طرابلس
مستشفى البترون الحكومي	البترون
مستشفى فتوح كسروان الحكومي (البوار)	كسروان
مستشفى نبيه بزي الحكومي الجامعي	النبطية
مستشفى نينين الحكومي	نينين
مستشفى بنت جبيل الحكومي	بنت جبيل
مستشفى بعطيك الحكومي	بعطيك
مستشفى الرئيس الياقوت الهراوي الحكومي	زحلة

مختبرات المستشفيات العسكرية

المستشفى العسكري المركزي في بيروت Hôpital Militaire Central	بيروت
---	-------

المختبرات المؤهلة لأخذ عيّنات "المسحات الأنفية" بطريقة Drive- thru

مختبر ميديكال دياغنوستيك تريمانت سنتر (الحمراء) Medical Diagnostic Treatment Center (MDTC)	بيروت
مختبر ميد لاب MedLab SAL CIC ALS (الحمراء – الجفيلور)	بيروت
مختبرات عيتاني Itani Medical Laboratories (المزرعة)	بيروت
مختبر أ ب سي ABC Laboratories	الأشرفية
مختبرات معوض الطبية Mouawad Medical Laboratory	الشيح
مختبرات الشياح (د. فؤاد ربحان) Rihan Medical Center	الشيح
مختبر إكسبيرت لاب Expert Lab	المنصورة
مختبر لايف لاب Life LAB	بعطيك
مستشفى الرياق Riyak Hospital	رياق

المختبرات الخاصة المؤهلة لإجراء التشخيص المخبري لفيروس كورونا بطريقة الـ RT-PCR

المختبر	الموقع
AUBMC مستشفى الجامعة الأميركية	بيروت
Hotel-Dieu de France (HDF) مستشفى أوتيل ديو الجامعي	بيروت
مختبرات رودولف ميريو (الجامعة اليسوعية - المتحف) Laboratoire Rodolphe Mérieux (Université Saint-Joseph)	بيروت
Saint-George Hospital - UMC مستشفى القديس جاورجيوس الجامعي	بيروت
Makassed General Hospital مستشفى المقاصد	بيروت
LAU Medical Center - Rizk Hospital مستشفى رزق الجامعي	بيروت
Hôpital Libanais Geitawi - CHU مستشفى اللبناني الجعيتاوي الجامعي	بيروت
Hôpital Notre-Dame du Rosaire مستشفى الوردية	بيروت
Doctor 's Center مختبر مركز الأطباء	بيروت
Fontana Laboratories مختبر فونتانا (الحمرا)	بيروت
مختبر الأمن العام (العدلية)	بيروت
Laboratoire Jabre-Ghorra مختبرات جبر وغرة	بيروت
Saint Marc Medical & Diagnostic Center مختبر السان مارك	بيروت
Laboratoire Moderne (Modern Lab- Berjaoui) المختبرات الحديثة	لغبري
Sahel General Hospital (SGH) مستشفى الساحل	لغبري
مستشفى الزهراء الجامعي	لغبري
Al Zahraa Hospital - UMC مستشفى الرسول الأعظم	برج الزجاجة
مستشفى بهمن	
Al Rassoul Al Aazam Hospital Bahman Hospital	حارة حريك
مختبر ناتيونال دياغنوستيك سرفيس كومباني National Diagnostic Services Company (NDSC)	حارة حريك
Medical Diagnostic Center مختبر الدكتور محمود عثمان - مركز التحليل الطبية	لبرجة
American Diagnostic Center (ADC) مختبر أميريكين دياغنوستيك سنتر	لجناح
Mount Lebanon Hospital مستشفى جبل لبنان	بعنا
Hôpital Saint-George – Hadath مستشفى السان جورج الحدث	بعنا
Al Hadi Laboratory مختبر الهادي	بعنا
INOVIE-Liban مختبر	بعنا

Hôpital du Sacré- Coeur مستشفى قلب يسوع	الحازمية
Clinigene مختبر كلينيجان	الحازمية
Hôpital Dr.Samir Serhal مستشفى سرحال	المتن
Transmedical for Life مختبر ترانسيميديكال فور ليف	المتن
Haroun Hospital مستشفى هارون	الزلقا
Bellevue Medical Center (BMC) مستشفى بلفو	المنصورة
Hôpital Albert Haykal مستشفى هيكال	الكورة
Centre Hospitalier du Nord (CHN) مركز الشمال الإستشفائي	زغرتا
Mazloum Hospital مستشفى المظلوم	طرابلس
Al Mounla Hospital مستشفى الملا	طرابلس
Nini Hospital مستشفى النبي	طرابلس
مختبر ميكروبيولوجيا الصحة والبيئة LMSE - المعهد العالي للدكتوراه، الجامعة اللبنانية	طرابلس
CHU - Notre-Dame des Secours مستشفى سيدة المعونات الجامعي	جبل
Lab Akiki & Boulos مختبر عقيقي وبولس	جبل
Centre Médical Wakim مختبر واكيم	جونية
Ain Wazein Hospital مستشفى عين وزين	الشوف
Hammoud Hospital UMC مستشفى حمود الجامعي	سيدا
Al Karim Medical Laboratory (KML) مختبر الكريم	سيدا
Sheikh Ragheb Harb Hospital مستشفى الشيخ راجب حرب	البيشة
Sabbah Diagnostic Center (SDC) مختبر الصباح	البيشة
Jabal Amel Hospital مستشفى جبل عامل	صور
Mashrek Diagnostic Center (MDC) مختبر المشرق	صور
Dar Al Amal University Hospital مستشفى دار الأمل الجامعي	بعلبك
Khoury General Hospital مستشفى خوري	زحلة
Medical Care Center (MCC) مختبر ميديكال كير سنتر	زحلة