



# Lebanon National Operations Room Daily Report on COVID-19

Thursday, August 20, 2020

Report #154

Time Published: 22:00 PM

**10952**  
Total registered cases since Feb.21

**1258** **9694**  
Leb Expats Locals

**605**  
New Cases

**8** **597**  
Leb Expats Locals

**431,634**  
Conducted PCR tests in labs since Feb.21

**4989**  
PCR tests conducted tests for locals in the last 24 hrs (in labs)

**1351**  
PCR tests conducted tests in airport in the past 24 hrs

**113**  
Deaths

**3050**  
Recoveries

**464**  
Cases registered among medical staff

**22**  
Cases registered among medical staff in the past 24 hrs

**7789**  
(Active Cases)

**7526**  
In home Isolation

**263**  
Currently hospitalized

**13**  
Mild Cases in the Past 24 hrs

**191**  
Cumulative Mild Cases

**4**  
In ICU in the past 24 hrs

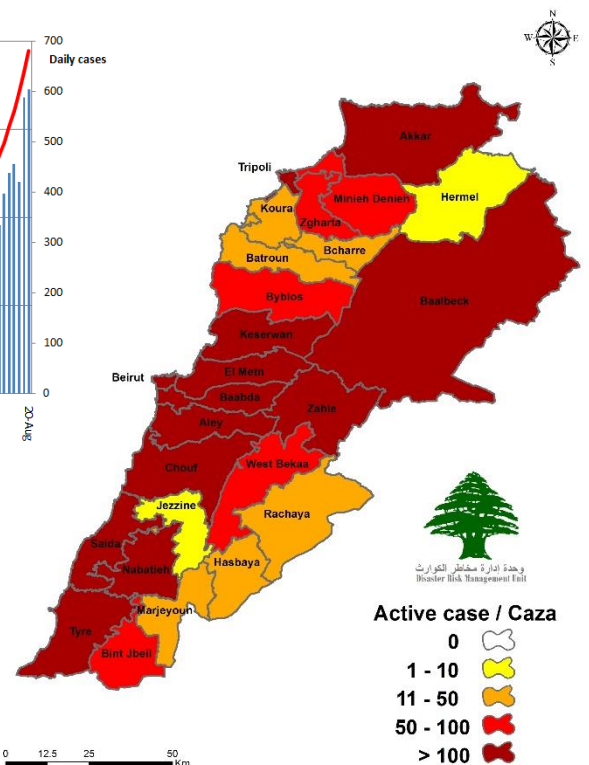
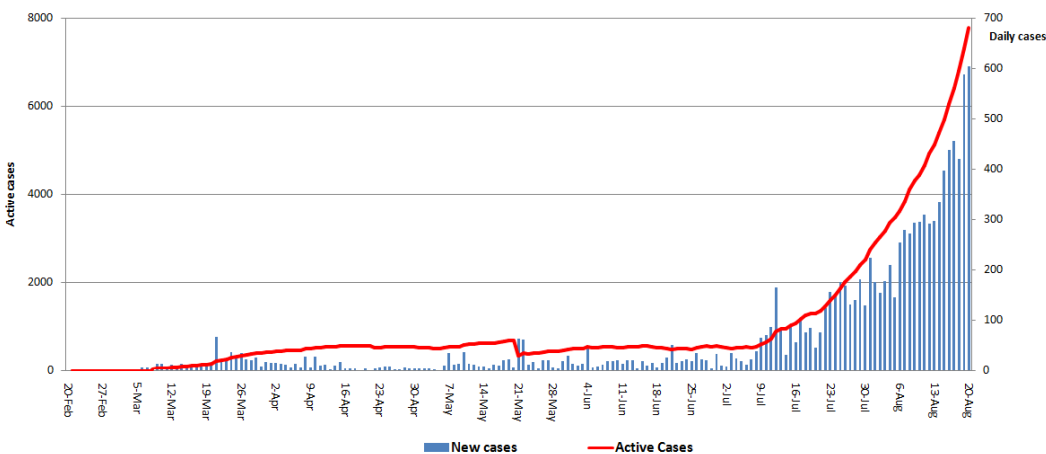
**72**  
Cumulative In ICU

	Lebanon	Internationally
Total registered cases	10952	22,718,030
Total deaths	113	793,648
Percentage of deaths	1.03%	3.49%
Number of recoveries	3050	15,405,274

\*The Above data was last updated at 10:00 PM

## Number of Cases by Location

- 2291 case is Under investigation



Active case / Caza

- 0
- 1 - 10
- 11 - 50
- 50 - 100
- > 100



0 12.5 25 50 Km

## The daily distribution of positive cases according to districts and towns

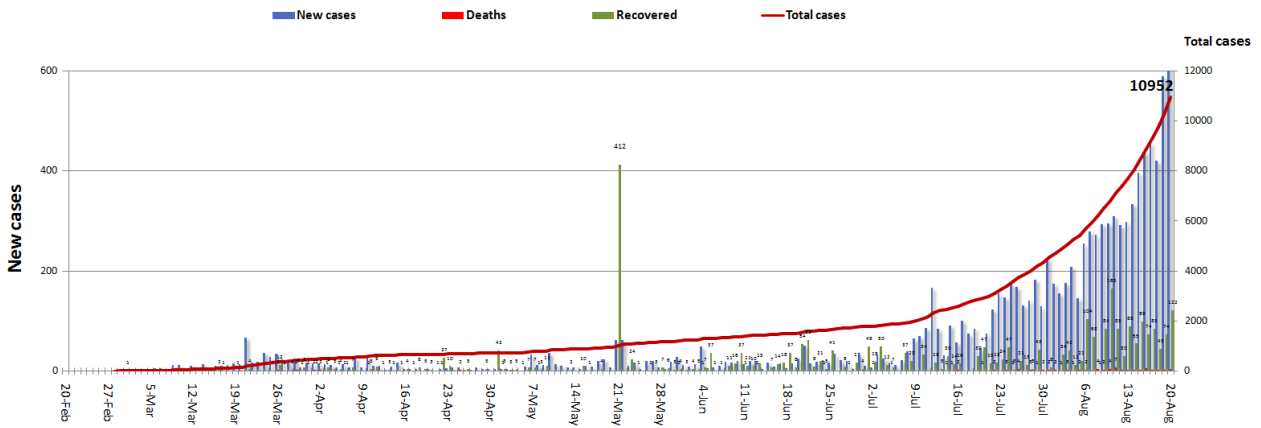
Beirut	Cases
Ras Beyrouth	3
Qreitem	1
Raoucheh	2
Hamra	11
Ain Tineh	1
Msaitbeh	9
Mar Elias	4
Tallet Khayat	2
Tallet Drouz	1
Zarif	3
Mazraa	6
Borj Abou Haidar	6
Basta Faouqa	8
Tariq Jdideh	23
Ras Nabaa	8
Bachoura	1
Basta Tahta	1
Achrafiyeh	18
Other	4
Baabda	Cases
Ain Roummaneh	4
Bir Hassan	5
Borj Brajneeh	29
Boutchay	1
Bsaba	2
Chiyah	14
Furn Chebbak	5
Ghbayreh	7
Hadath	4
Haret Hreik	6
Hazmiyeh	1
Jnah	3
Laylakeh	3
Louayzeh	1
Madineh Riyadiyeh	1
Mreijeh	1
Other	2
Ouadi Chahrour Aaoulia	1
Ouzaai	1
Tahouitat Ghadir	3
Zahleh	Cases
Barr Elias	1
Chtaura	2
Other	1
Qabb Elias	1
Riyaq	2
Saadnayel	1
Zahleh Berbara	1

Matn	Cases
Ain Saadeh	1
Antelias	7
Baabdat	1
Borj Hammoud	1
Broummana	1
Byaqout	1
Daoura	2
Dekouaneh	7
Delb	1
Fanar	1
Jall Dib	3
Jdaidet Matn	1
Mtayleb	1
Naqqach	1
Qornet Chehouane	2
Raouda Baouchriyeh	2
Sinn Fil	3
Zalqa	3
Chouf	Cases
Aanout	1
Barja	4
Chhim	1
Damour	1
Daraiya	4
Jiyeh	2
Ketermaya	1
Naameh	3
Sibline	1
Aleyh	Cases
Aaley	1
Aaramoun	4
Ain Dara	1
Bchamoun	2
Bhamdoun Dayaa	1
Blaybel	2
Bsatine Fsaqine	1
Choueifat Oumara	3
Choueifat Aamroussiyyeh	2
Choueifat Qoubbeh	2
Hay Sellom	3
Houmal	1
Ighmid	1
Kahhaleh	2
Keyfoun	6
Khaldeh	2
Saoufar	1

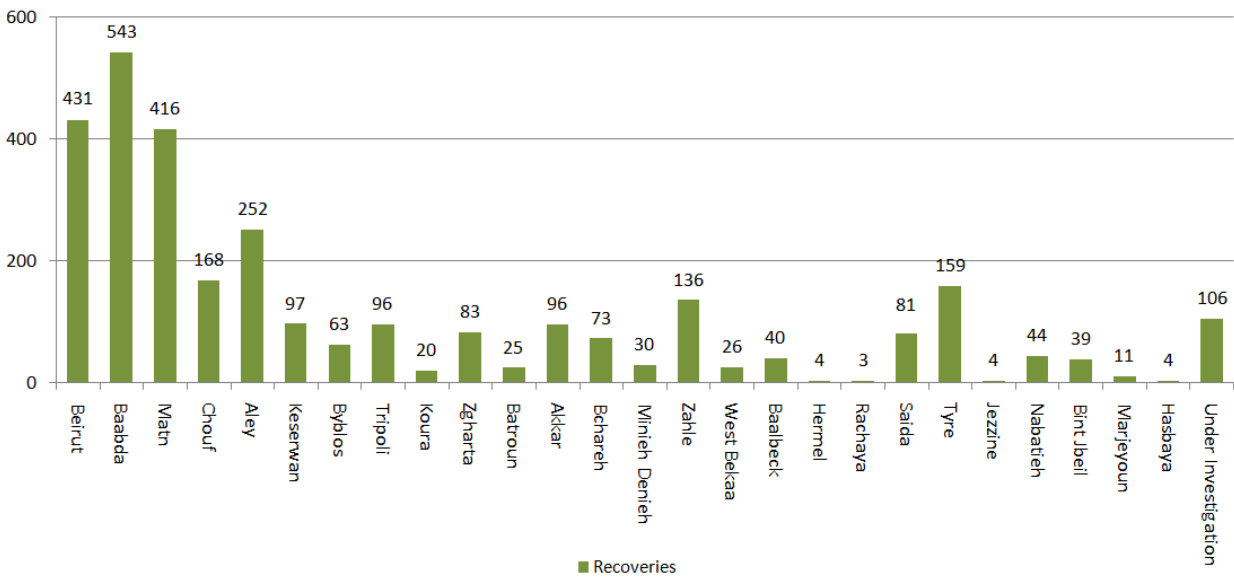
Kesrwan	Cases
Aaqaybeh	1
Adonis	1
Borj Ftouh Fatqa	1
Jaaita	2
Jounieh Ghadir	1
Jounieh Haret Sakhr)	1
Jounieh Kaslik	1
Jounieh Sahel Aalma	3
Kfar Hbab	2
Maameltein	1
Shayleh	3
Tabarja	3
Zaitoun	1
Zouk Mkayel	5
Zouk Mosbeh	3
Jbeil	Cases
Aamchit	2
Afqa	1
Halate	1
Kfoun	1
Tripoli	Cases
Beddaoui	1
Mina Jardins	5
Mina N:1	1
Other	12
Trablous Qoubbeh	7
Trablous Tabbaneh	15
Trablous Zahriyeh	1
Koura	Cases
Amioun	1
Barsa	1
Dahr Ain	2
Other	1
Zgharta	Cases
Mejdlaiya	2
Miziara	1
Zgharta	6
Batroun	Cases
Chikka	1
Hamat	6
Minch Danieh	Cases
Aazqai	1
Bqaa Safrine	4
Deir Aammar	1
Minieh	2

Akkar	Cases
Aadbil	1
Bebnine	3
Borj Aarab	1
Fnaydeq	2
Halba	1
Hayzouq	1
Machha	3
Ouadi Jamous	1
Qarqaf	2
Beqaa Gharby	Cases
Ghazzeq	1
Machghara	1
Yohmor	1
Saida	Cases
Aarab Tabbaya	1
Ain Heloueh	1
Arzai	1
Ghaziyeh	1
Hlaliyeh	1
Kfar Melki	1
Other	7
Sarafand	2
Nabatieh	Cases
Ain Qana	2
Harouf	2
Jbaa	6
Jibchit	1
Nabatiyeh Bayad	1
Other	1
Toul	3
Sour	
Borj Rahhal	1
Other	2
Bint Jbeil	Cases
Tibnine	1
Marjeoun	Cases
Blida	
Hasbaya	Cases
Mimess	1
Baalbeck	Cases
Chmistar	1
Laboueh	1

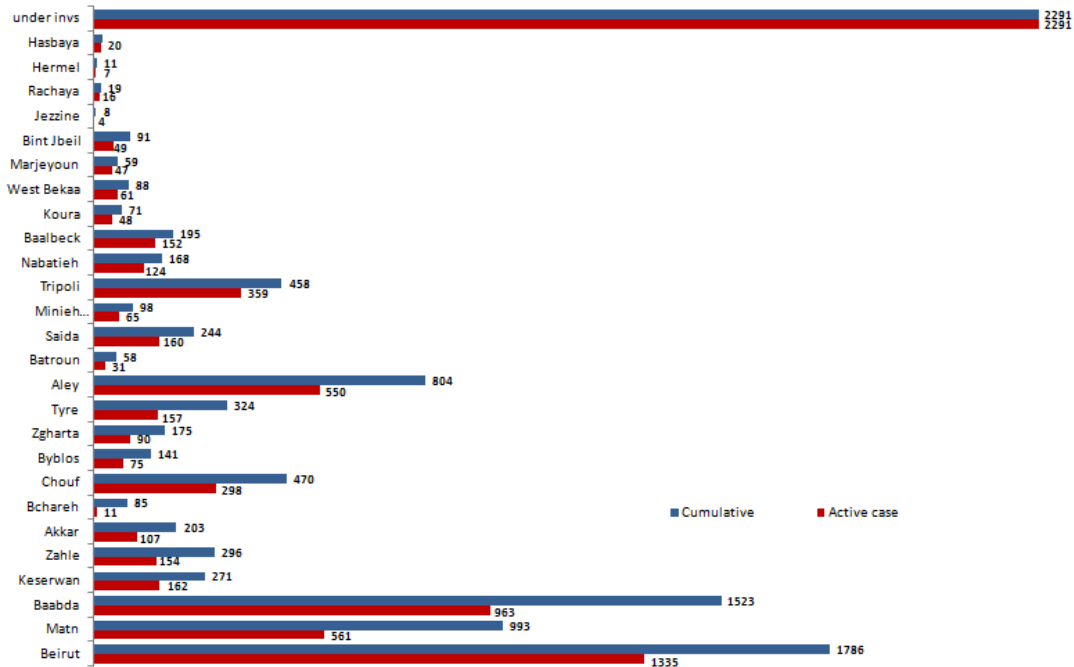
## Cases per day



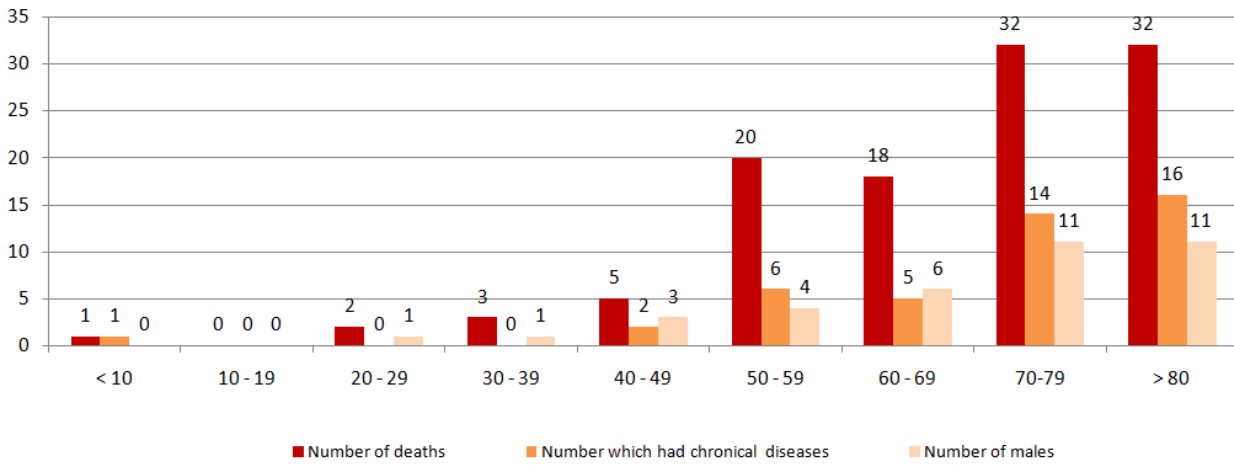
## Distribution of recoveries by Districts



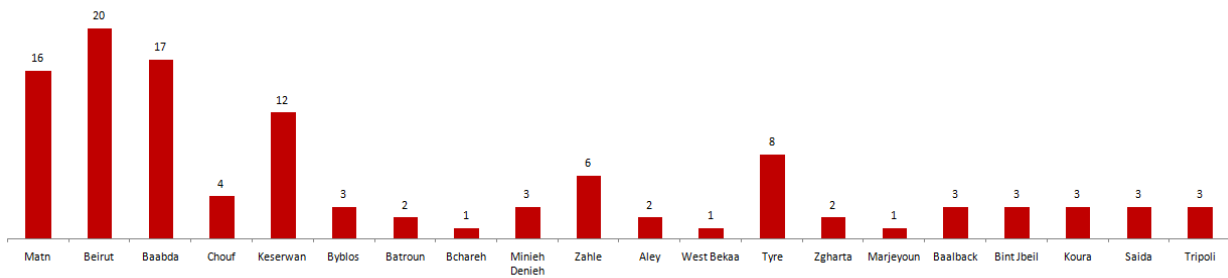
## Distribution of active cases by District



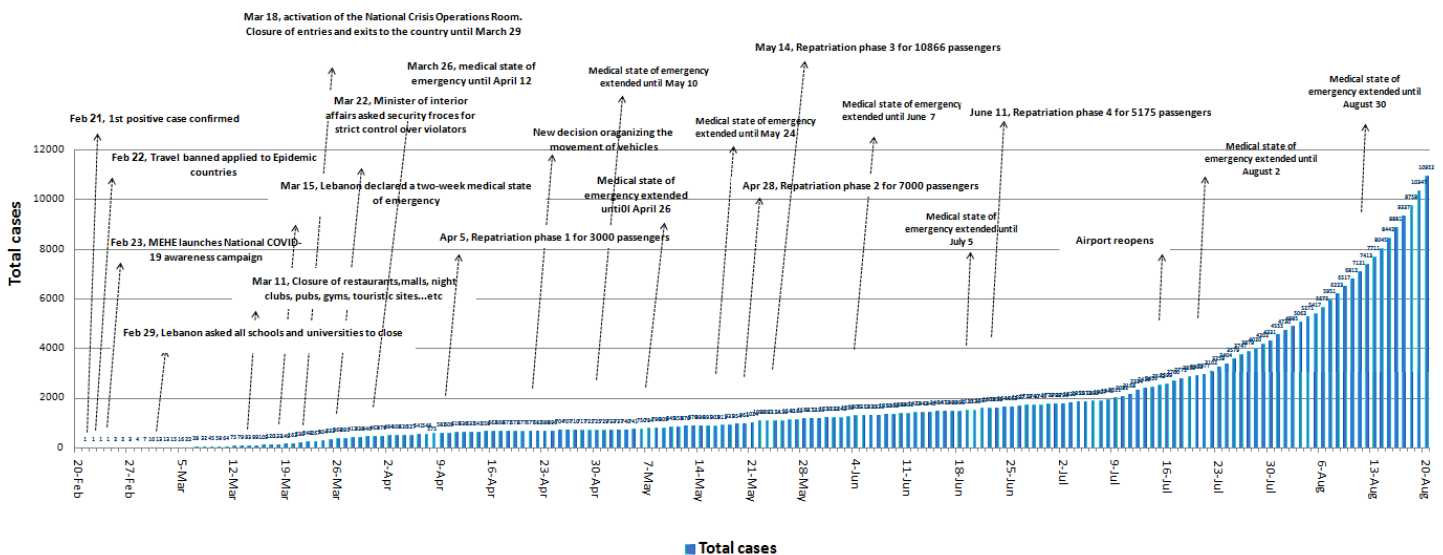
## Distribution of deaths by age



## Distribution of deaths by Governorates

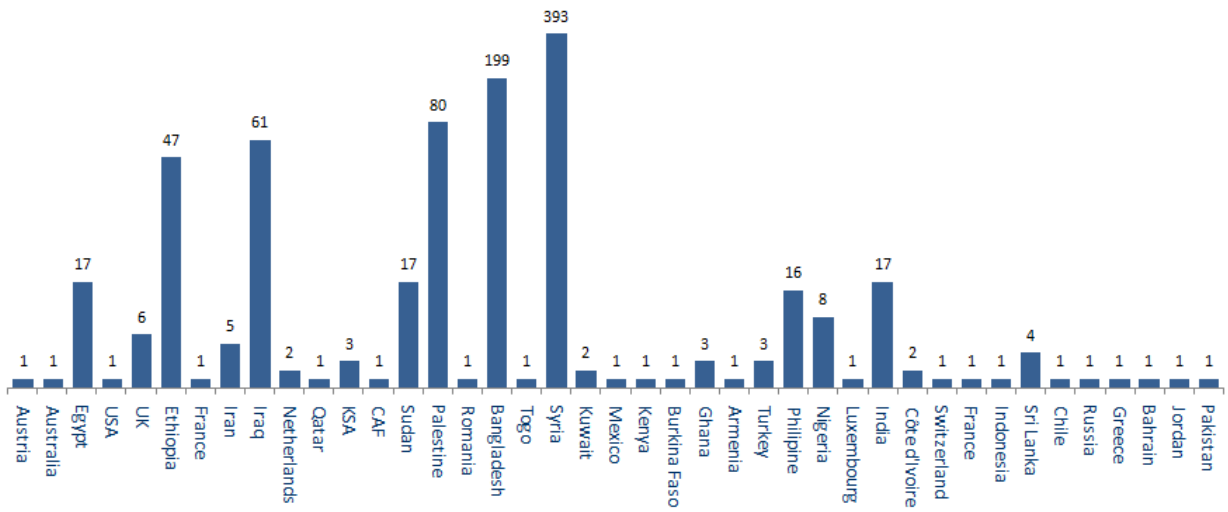


## Chronology of decisions according to number of cases

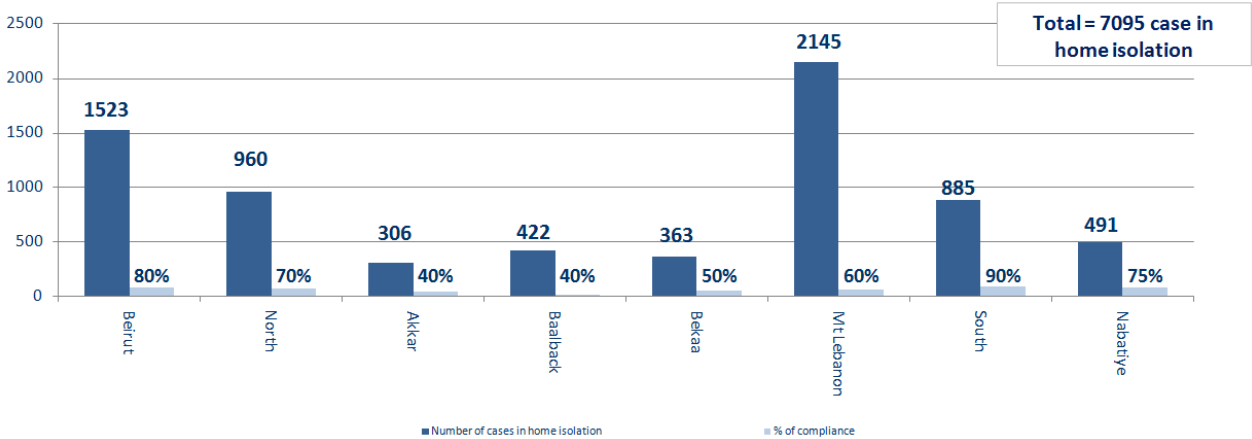


## Distribution of cases by nationality

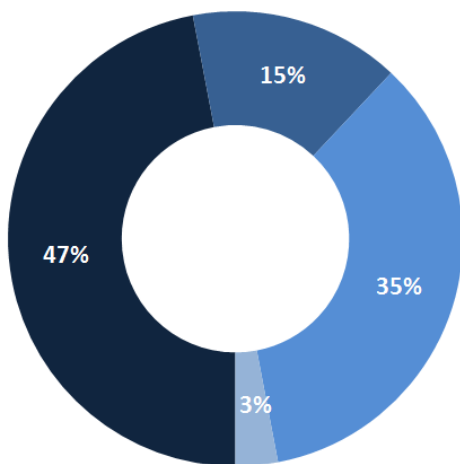
Lebanese : 10045 cases out of 10952 ( 87 % )



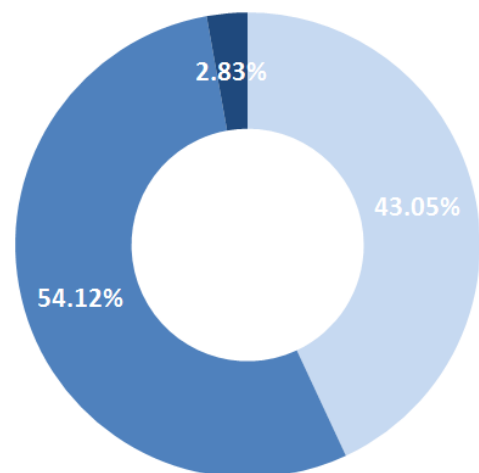
## Number of individuals in home isolation and percentage of commitment to isolation



## Exposure



## Status of Cases

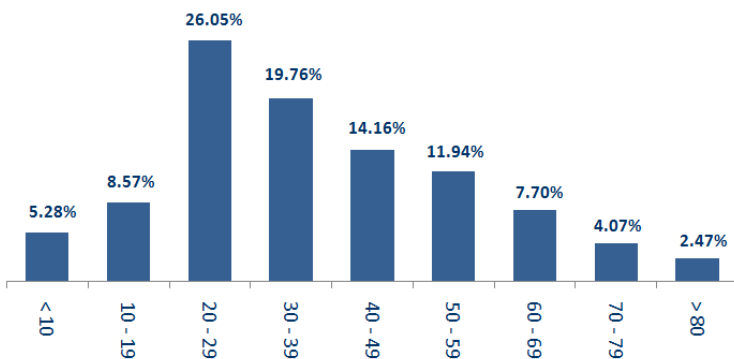


■ Contact with confirmed case  
 ■ Travel related  
 ■ Under investigation  
 ■ Unidentified source  
 ■ Asymptomatic  
 ■ Mild/Moderate  
 ■ Severe/Critical

---

**Distribution by age**

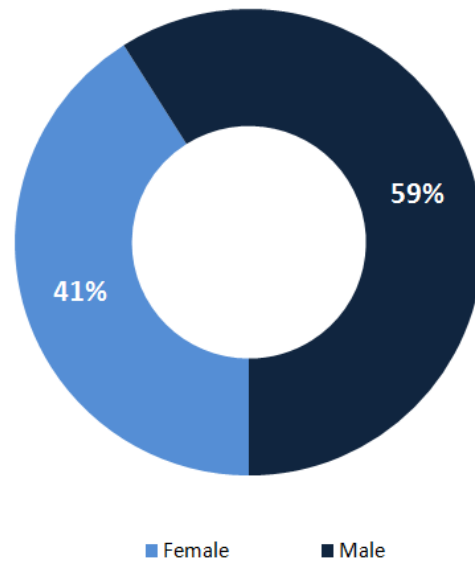
---



---

**Distribution according to gender**

---



---

**Decisions and actions taken – 19/8/2020**

---

---

**Ministry of Public Health**

---

The Ministry of Public Health issued the following instructions regarding the application of general mobilization procedures in accordance with the recommendations of the Medical Scientific Committee and in accordance with the epidemiological reality, including the following:

- Requesting all doctors observing the Ministry and medical personnel to refrain from entering cold cases into hospitals for a period of 15 days and limit them to emergency cases, and to work to empty hospital beds of similar cases of recovery that do not require staying in, in order to preserve the health of patients and medical staff from the spread of infection.
  - Requesting all doctors observing the Ministry and medical personnel to refrain from entering cold cases into hospitals for a period of 15 days and limit them to emergency cases, and to work to empty hospital beds of similar cases of recovery that do not require staying in, in order to preserve the health of patients and medical staff from the spread of infection
- Requesting all health observers in the staff of the Ministry of Health to join the epidemiological surveillance team and track cases through the Health Protection Directorate in accordance with the instructions of the direct chiefs and district doctors.
  - Requesting all health observers in the staff of the Ministry of Health to join the epidemiological surveillance team and track cases through the Health Protection Directorate in accordance with the instructions of the direct chiefs and district doctors

A decision was issued by the Ministry of Public Health to close nurseries as part of the general mobilization measures to confront the Coronavirus, starting from 8/21/2020 until 9/9/2020, under penalty of perjury.

The ministry issued the results of additional checks for incoming flights on 16/8/2020, 17/8/2020 and 18/8/2020, where one positive case was recorded coming from Baghdad via the Iraqi airline, Flight 301, on 8/18/2020.

Arriving from	Company	Flight Number	Number of Positive Cases
<b>18/8/2020</b>			
Baghdad	Iraqi Airlines	301	1
<b>Total</b>			<b>1</b>

**Security services (Internal Security Forces, General Security, State Security, Army, General Directorate of Civil Defense)**

- The army carried out patrols in different Lebanese regions, distributed food boxes to families in need (CIMIC) and dispersed gatherings.
- Distributing food aid in various Lebanese regions through the CIMIC Office
- ISF will be isolating the following areas for the next week:

Governorate/District	Location
Beirut Governorate	Tariq al Jadidah, supporting municipality in Ard jalloul isolation,
Baabda District	Burj al Barajneh, Hay el Akrad (Handled by Municipality)
Tyre District	Support in the isolation of Majdel zoun neighborhood
Bnt Jbeil District	Support in the isolation of Khirbet Silm and Jal al-Hayuk neighborhoods

**Ministry of Public Works and Transportation**

DEPARTING FLIGHTS		ARRIVING FLIGHTS	
41	Number of Flights	42	Number of Flights
3519	Number of Departing Individuals	2127	Number of Arrivals

Port	Entered			Left		
	Import	Direction	#	Export	Direction	#
Beirut	Containers	Alexandaria	1	Containers	Tartous	1
	Containers	Alexandarun	1	Diesel	Zouk	1
			2			2

**Lebanese Red Cross**

41663 (43 New)	Number of PCR tests transferred to laboratories	0	Number of additional ambulance centers ready to respond	47	ambulance centers	3775 (27 New)	cases transferred to hospitals
166	Number of volunteers trained to transfer PCR tests	1444	Number of trained paramedics	8509	total number of respondents	67241 (33 New)	number of those benefiting from awareness *sessions
967	The number of university volunteers trained to follow up on prevention measures in companies and institutions	217	Number of university volunteers trained to conduct awareness sessions	550	total LRC volunteers for covid19	8320	number of trained managers for isolation centers
4096 (6 New)	Number of beneficiaries from educational electronic platforms COVID-19	74232 (718 New)	Number of distributed equipment	1207656	total distributed posters, brochures, and flyers on covid19 prevention	419 (1 New)	number of rpsions that have been disinfected

---

## General announcements

---

On 8/19/2020, the Ministry of Education and Higher Education issued Decision No. 377 / M / 2020 requiring that all educational institutions, public and private, in all their stages stop teaching and conducting exams in presence during the period from 8/21/2020 to 7 / 20/2020, provided that it continues its administrative work according to a rotation schedule determined by the Director General or the President of the Corporation in a manner that takes into account all preventive measures.

The National Committee for Follow-up of Preventive Measures and Procedures to Confront the Coronavirus, based on its meeting on 8/18/2020, issued the following recommendations to curb the spread of the epidemic:

- For the academic year, the committee recommended the accreditation of blended education (attendance part and distance part), provided that the attendance rate does not exceed 50% of the school's absorptive capacity, provided that an assessment of the health status takes place after three weeks. The committee also recommended that the school year not to start before the last week of September
- Implementing a partial closure of the economic sectors for a period of two weeks, in accordance with a decision issued by the Ministry of Interior.
- Appointing a coordinator by the National Committee from the Lebanese University to communicate and coordinate with the Epidemiological Surveillance Program at the Ministry of Public Health to study and analyze health data and submit them to the National Committee to take appropriate measures to prevent the spread of the epidemic.

The Minister of Interior and Municipalities, based on the Cabinet meeting on 18/8/2020 and based on the recommendations of the National Committee for Follow-up of Preventive Measures and Procedures to Confront the Coronavirus, issued Resolution **No. 1003 of 8/8/2020** regarding the maximum closure within the general mobilization procedures to confront the spread of the Coronavirus, Where it was decided to implement the closure from the morning of Friday 21/8/2020 until the morning of Monday 7/9/2020 and to specify the sectors excluded from the closure and the conditions to be followed, in addition to preventing entry and exit from the streets daily from 6 pm until 6 am.

**Note: The decisions can be found at [www.drm.pcm.gov.lb](http://www.drm.pcm.gov.lb)**

---

## Examples of lack of adherence to safety measures

---

- Demonstration, and Roadblocks
- Overcrowding in restaurants and cafes
- Non-compliance of citizens with preventive measures
- Gathering in cafes
- gatherings without wearing masks.
- social gatherings and celebrations and kids areas

**If you feel any symptoms, call directly the hotline of the Ministry of Public Health: 1214 or 01/594459**