



# Lebanon National Operations Room Daily Report on COVID-19

Monday, November 02, 2020

Report #229

Time Published: 10:30 PM

New in the report:

- The names of the laboratories that did not specify the district, the place of residence, or the phone number for a number of positive cases, which affects the tracking of cases and the identification of contacts to conduct the necessary checks within the past 24 hours.

<b>1,080</b> New Cases		<b>83,697</b> Total Cases since 21.2.2020		<b>652</b> Total Deaths		<b>43,885</b> Total Recovered	
1,058 Residents	5 Expats	80,259 Residents	2,358 Expats	9 New Deaths		981 New Recovered	

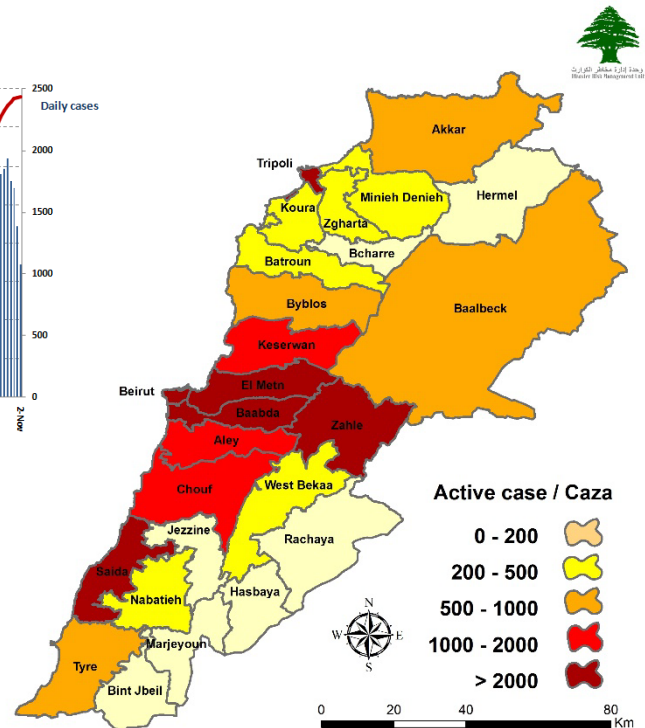
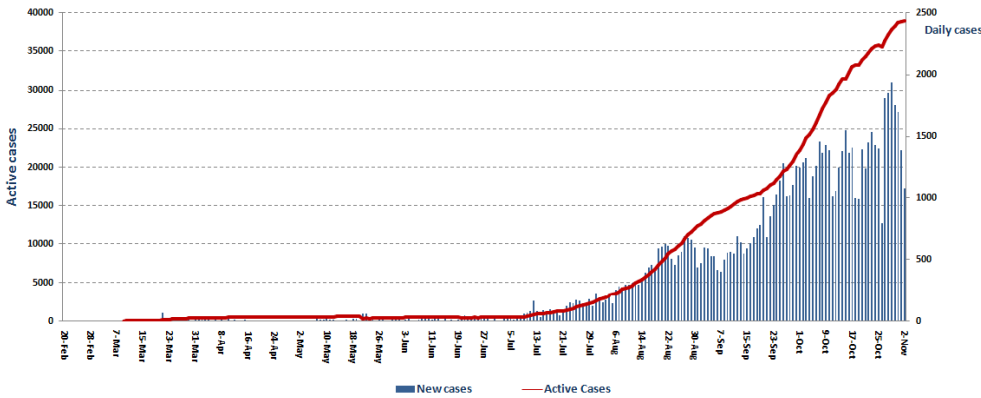
84 Deleted Status due to its recurrence	<b>1,431</b> Total Cases in the Health Sector	<b>39,160</b> Total Active Cases	<b>805</b> Hospitalized Cases	<b>276</b> Total Cases in ICU
	3 New Cases in the Health Sector	38,355 Cases in Home Isolation	529 Mild Cases	6 New Cases in ICU

<b>1,189,732</b> COVID-19 Tests since 21.2.2020	Lebanon Status compared to the World		
<b>1,246</b> COVID-19 Tests at Airport within 24 hrs.	<b>5,319</b> COVID-19 tests for residents within 24 hrs.	<b>Total Cumulative</b>	<b>83,697</b>
		<b>Total Deaths</b>	<b>652</b>
		<b>Deaths percentage</b>	<b>0,77%</b>
		<b>Total recoveries</b>	<b>43,885</b>
			<b>46,709,156</b>
			<b>1,203,771</b>
			<b>2.57%</b>
			<b>33,909,200</b>

Ref: Ministry of Public Health Data

## Number of Cases by Location

- 15,029 case is Under investigation



Beirut	93
Ein El Mreisseh	3
AUB	1
Ras Beirut	2
Qoreitem	1
Rouche	1
Hamra	2
Snoubra	1
Mseitbeh	1
Mar Elias	3
Tallet El Khayat	3
Sanayeh	1
Zarif	1
Mazraa	8
Malaab Al Balady	1
Tariq Jdeedeh	8
Horch	2
Ras El Nabaa	1
Basta Tahta	2
Majidieh	1
Al Khadr	1
Ashrafieh	13
Others	23
<b>Baabda</b>	<b>114</b>
Chiah	10
Jnah	11
Ouzai	1
Ghobeiry	2
Ein Al Rimmaneh	11
Forn Al Shebbak	7
Haret Hreik	8
Lailaky	3
Borj Al Brajneh	6
Mreijeh	1
Tahweetet Ghadir	3
Hazmieh	6
Fayadieh	1
Hadat	20
Kfarshima	1
Shahrour Al Olya	1
Bsaba	4
Ras El Metn	1
Kobbeih	1
Falougha	1
Others	15
<b>Batroun</b>	<b>11</b>
Batroun	3
Kebba	1
Shekka	3
Besbina	1
Kfar Hay	1
Nahla	1
Others	1
<b>Hermel</b>	<b>8</b>
Hermel	8
<b>Marjeyoun</b>	<b>2</b>
Alman	2

Aleyh	49
Amrousieh	5
Hay El Sillom	7
Khaldeh	5
Al Oumara	7
Aramoun	4
Mouenseh	1
Bshamoun	4
Bleibel	1
Kahale	1
Qmatieh	1
Kayfoun	2
Baisour	1
Majdlayya	1
Bsatine Fsageen	1
Bhamdoun	1
Sharoun	1
Azzounieh	1
Mreijat	3
Others	2
<b>Keserwan</b>	<b>6</b>
Kaslik	1
Ghadir	1
Zouk Mosbeh	1
Adma & Dafneh	1
Ghazir	1
Kfour	1
Byblos	6
Mastita	1
Blat	1
Amshit	4
<b>Tripoli</b>	<b>34</b>
Zeitoun	4
Bab Al Raml	1
Qebbeh	4
Zahrieh	1
Al Mina 1	5
Beddawy	2
Madina Al Jadidah	5
Beddawy Camp	1
Others	11
<b>Koura</b>	<b>11</b>
Amyoun	1
Kfar Aqqa	1
Btorram	2
Rashdebbine	1
Kefraya	2
Dahr Al Ein	2
Barsa	1
Others	1
<b>Zghorta</b>	<b>4</b>
Kfar Hora	1
Kfarfo	1
Mezyara	2
<b>Bint Jbeil</b>	<b>2</b>
Debel	1
Others	1

Akkar	34
Halba	2
Sheikh Mohmad	1
Mashha	1
Sweiset Akkar	1
Old Akkar	5
Koueikhat	1
Kousha	1
Bebnine	2
Nahr Al Bared	5
Berqayel	2
Jdeidet Al Qaytaa	1
Meshmesh	1
Qorneh	1
Fneidek	5
Mashta Hassan	1
Others	4
Bcharre	3
Bcharre	1
Blouza	1
Others	1
<b>Menyeh Dunyeh</b>	<b>20</b>
Deir Amar	2
Menyeh	8
Bhannine	2
Seer Dunniyyeh	2
Beit Al Faqs	1
Qarsita	2
Ezal	1
Kfar Shelan	1
Others	1
<b>Zahle</b>	<b>62</b>
Hoch Zaraaneh	1
Rasiieh	1
Barbara	1
Karak Nouh	3
Saidet Al Najat	1
Hoch Al Oumara	2
Arady	5
Forzol	1
Naby Ayla	2
Ablah	2
Chtoura	4
Taalabaya	3
Jdita	1
Taanayel	1
Saadnayel	1
Qab Elias	4
Majdel Anjar	2
Riyak	10
Ali Al Nahry	5
R'eet	2
Terbol	1
Masa	1
Kfar Zabad	2
Others	6

Matn	96
Borj Hammoud	10
Nabaa	3
Sin El Fil	8
Jesr El Basha	2
Jdeidet El Metn	6
Dora	2
Rouda	3
Sed Al Bouchrieh	4
Sabtieh	6
Dekwene	6
Antelias	2
Jal El Dib	4
Zalqa	1
Byaqout	2
Belleview	1
Mansourieh	14
Dayshounieh	1
Fanar	3
Ein Saadeh	3
Roumieh	1
Bsalim	1
Mteileb	1
Beit Al Chaar	1
Mazraet Yashouh	1
Zikrit	1
Beit Shabab	1
Broummana	1
Qannbt Bromana	1
Fouar	1
Others	5
<b>Chouf</b>	<b>31</b>
Damour	1
Naameh	3
Meshref	1
Chhim	4
Daraya	1
Sibline	1
Barja	3
Baasir	3
Jiyyeh	3
Jadra	1
Wady Al Zayneh	4
Werdanieh	2
Zaarourieh	1
Bsaba	1
Semqanieh	1
Majdel Maoush	1
<b>Rashayya</b>	<b>8</b>
Rashayya Wady	1
Tannoura	1
Kfar Qouq	1
Ein Harsha	1
Yanta	1
Others	3

Western Beqaa	35
Mashghara	7
Ammiq	1
Lala	11
Kamed Al Loz	6
Sultan Yaaqoub	1
Qar'oun	1
Manara - Hammara	3
Al Marj	2
Zellaya	1
Others	2
Nabatieh	16
Nabatieh Al Tahta	1
Nabatieh Al Fawka	1
Habbouch	3
Houmine Al Fawka	1
Zefta	2
Deir Al Zahrany	1
Nmeirieh	1
Jebshit	1
Ansar	1
Qseibeh	1
Yuhmor	1
Others	2

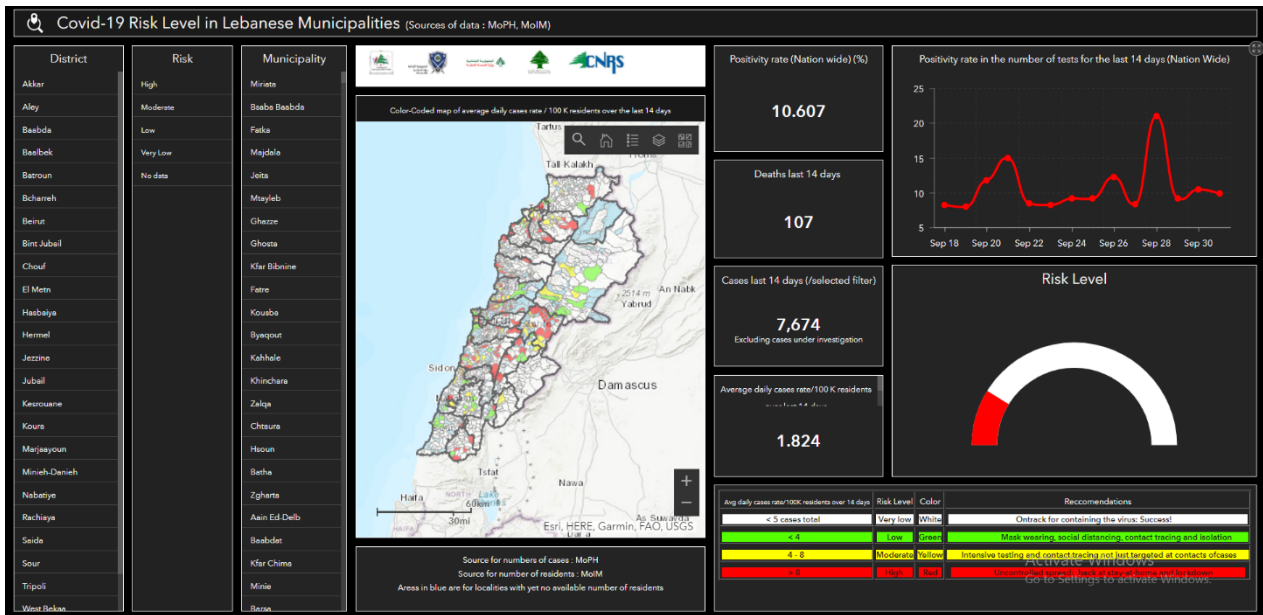
Tyre	31
Tyre	5
Bass	2
Rashidieh	2
Borj Al Shemaly	3
Debaal	1
Aiteet	1
Qana	6
Maarakeh	1
Saddiqeen	1
Bazourieh	1
Chehabieh	1
Shhour	1
Abbasieh	1
Borj Rahhal	1
Qleileh	1
Mansoury	2
Others	1

Baalbek	198
Baalbek	88
Doures	3
I'aat	2
Nahle	2
Kfar Dan	1
Al sahel	2
Al Ein	1
Naby Othman	1
Al Sharky	6
Arsal	7
Qaa Baalbek	1
Shaeth	1
Younine	1
Deir Al Ahmar	2
Bednayel	7
Qasr Nabba	2
Temnine Fawka	2
Hoch AL Rafqa	1
Temnine Tahta	6
Kfar Dabash	1
Chmestar	4
Tarayya	1
Ser'een AL Tahta	3
Ser'een Al Fawka	2
Hezzine	1
Khadr	18
Sifry	2
Brital	4
Beit Msheik	1
Bouday	1
Others	24

Saida	52
Old Saida	6
Hlalieh	2
Haret Saida	2
Ein Al Helwe	4
Majdelyoun	1
Abra	2
Qrayyeh	1
Ghazieh	6
Qannarite	2
Rouwayes	1
Ghassanieh	1
Sarafand	1
Anqoun	2
Others	21

Others	165
--------	-----

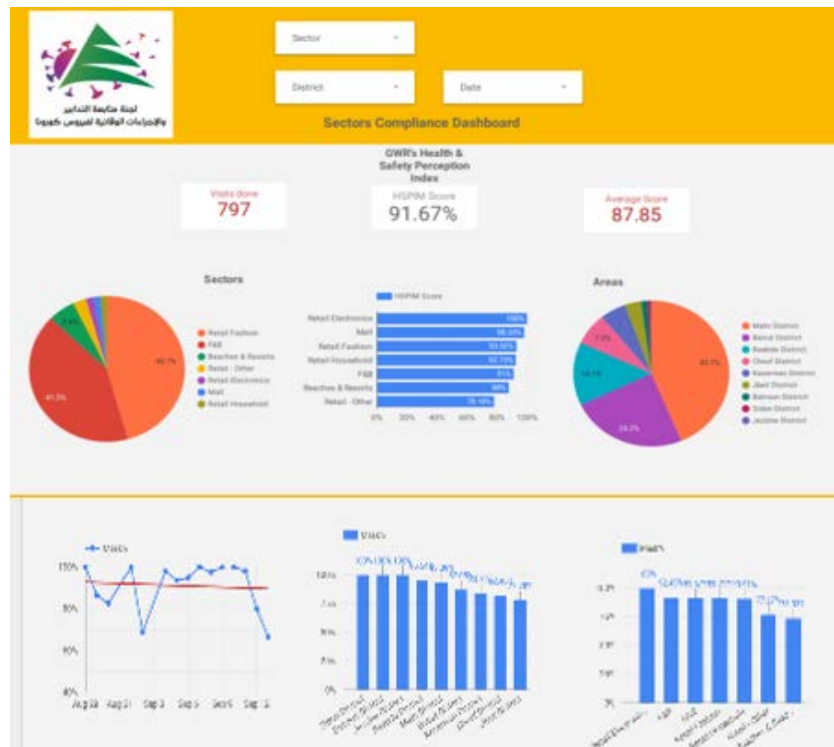
## The Online platform to measure the level of risk of the spread of the new Corona virus



This interactive platform allows you to know the level of risk of spreading the kurna virus according to districts, based on the number of cases registered daily and the number of residents in each district. For more information on a daily basis, you can access the following link:

<https://bit.ly/DRM-RiskLevelInMunicipalities>

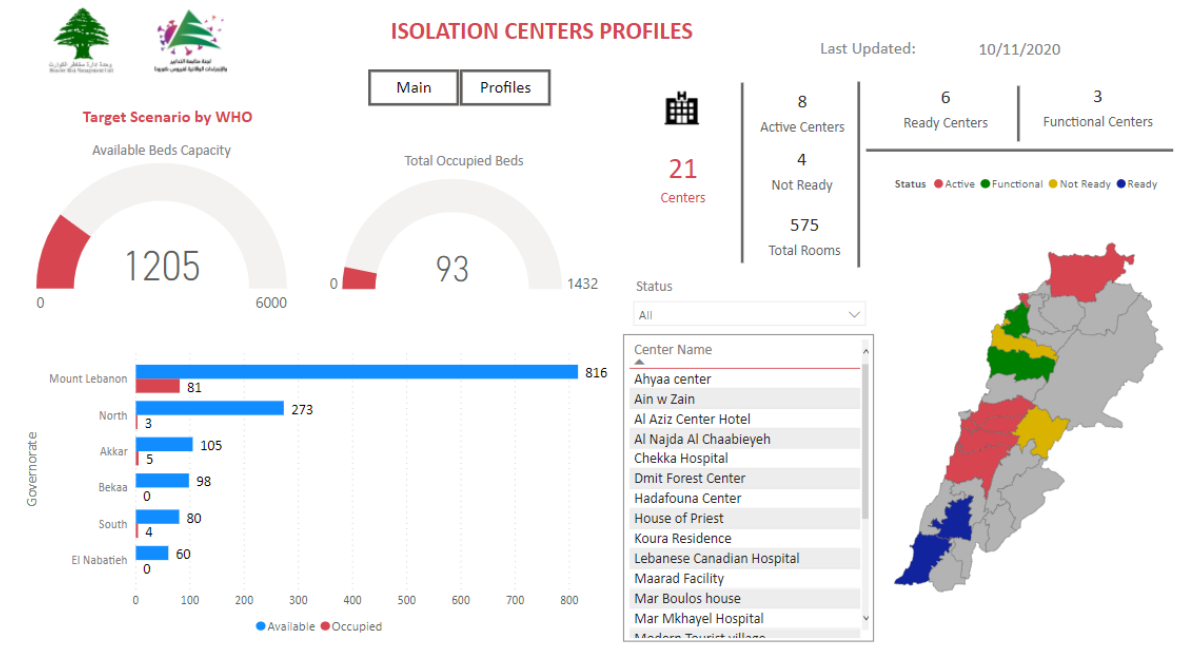
## Online platform to track sector commitment in general mobilization procedures



Based on the recommendation issued by the National Committee for Follow-up of Preventive Measures and Measures to Confront the Coronavirus to open all sectors, provided that the general mobilization procedure (safe distance, muzzle, and hand sterilization) be applied, a special electronic platform was created that allows monitoring and measuring the percentage of commitment by various sectors on an ongoing basis.

The detailed results can be viewed directly at the following link <http://bit.ly/covidsectordata>

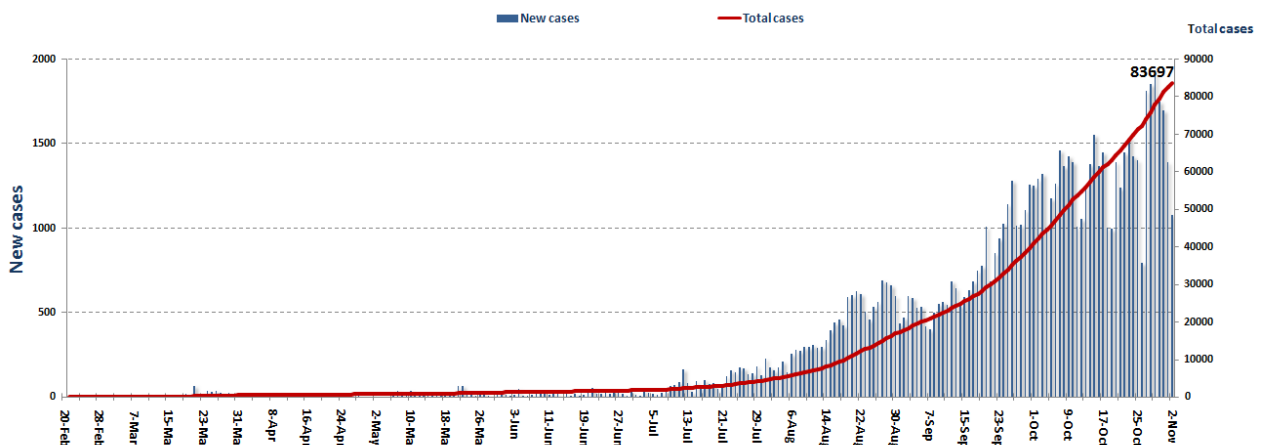
## Occupancy rate of isolation centers for cases infected with Coronavirus



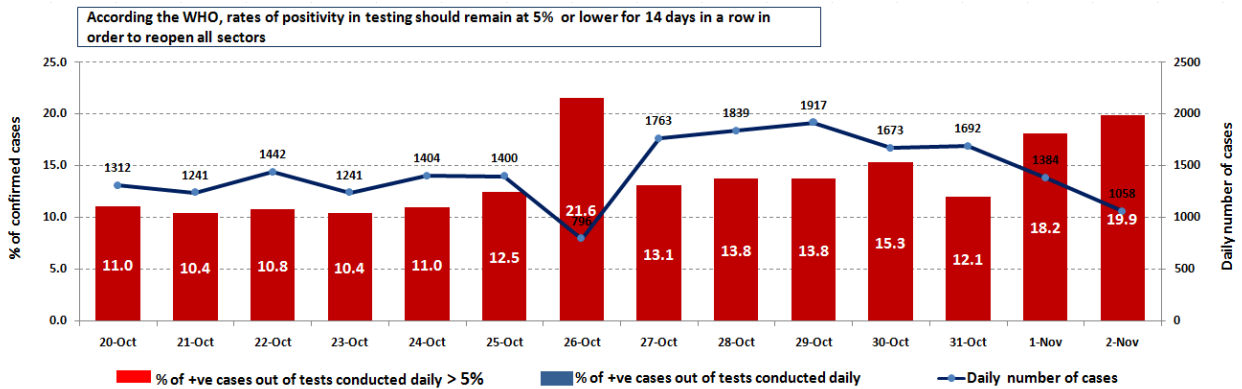
For more information about the isolation centers' distribution and the percentage of their occupancy, enter the following link: <http://bit.ly/DRM-IsolationCentersProfiles>

Note: These centers have been equipped in cooperation between the National Committee for Follow-up of Preventive Measures and Measures to Confront the Coronavirus and Governors and Municipalities, the United Nations Development Program, the World Health Organization, UNICEF, the Ministry of Public Health, the Syndicate of Nurses in Lebanon and the Syndicate of Specialists in Social Work.

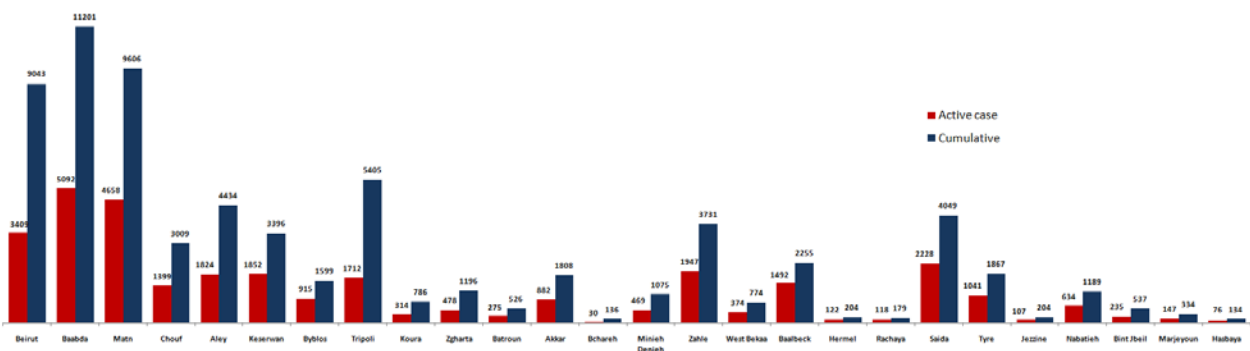
## Cases per day



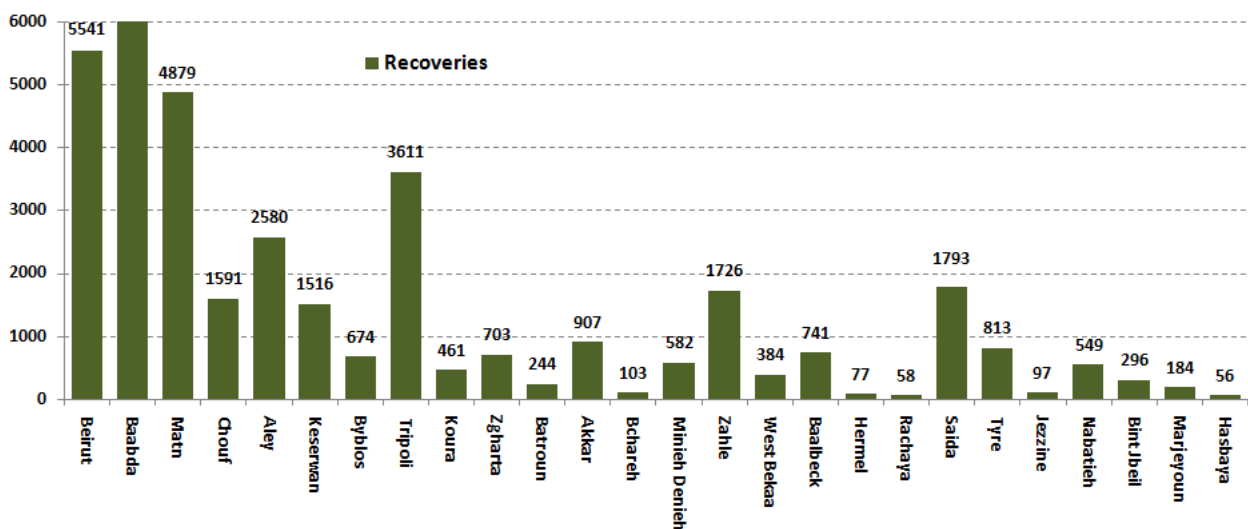
## The percentage of positive cases out of the number of daily checks (20 Oct - 02 Nov 2020)



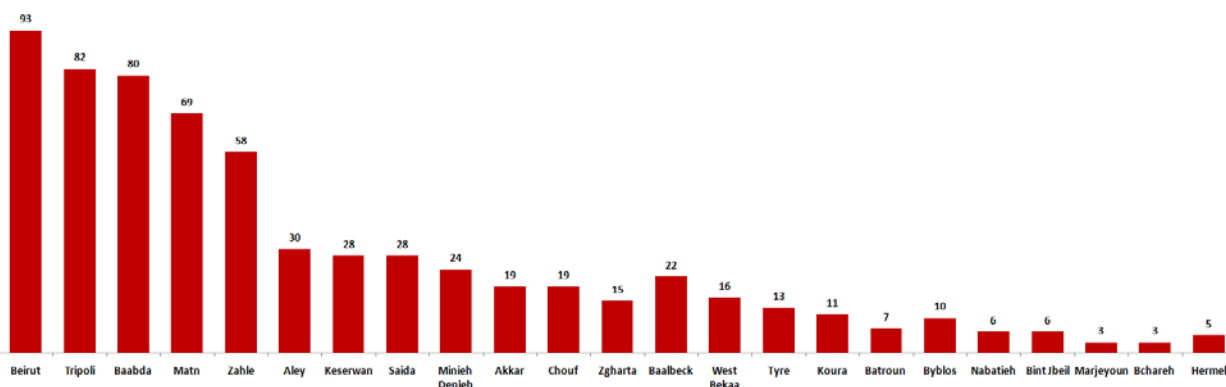
## Distribution of Active Cases by Districts



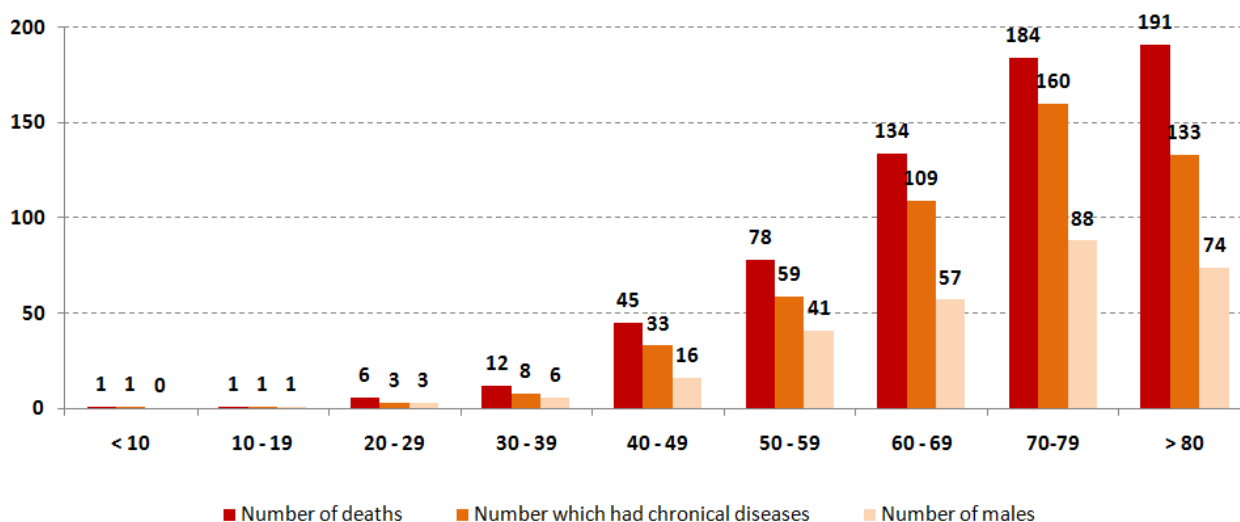
## Recoveries



### Distribution of deaths by Governorates



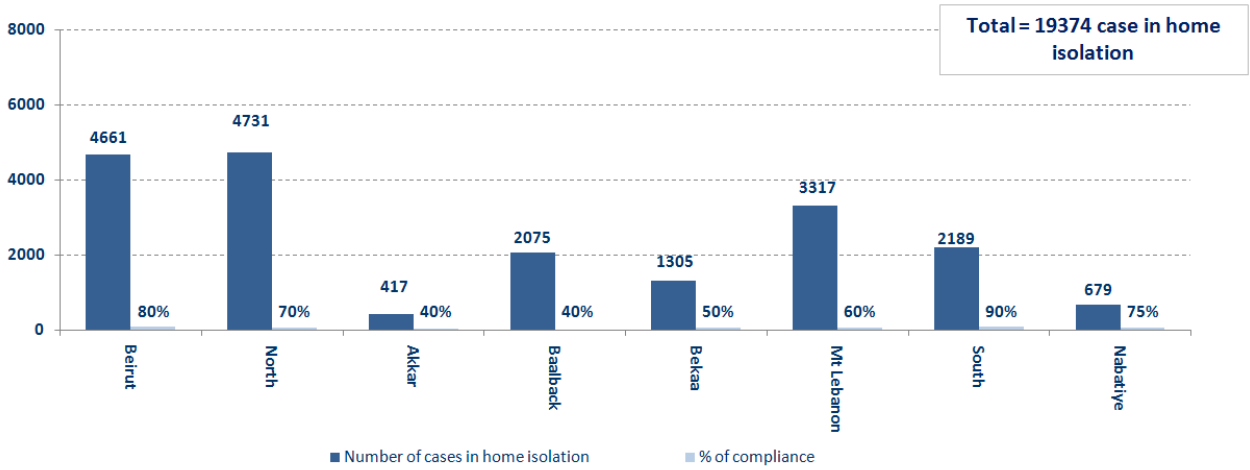
### Distribution of deaths by Age



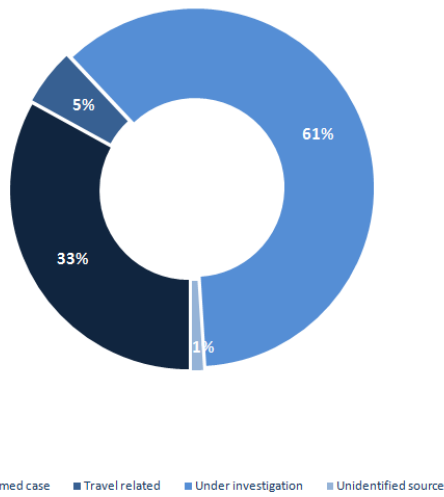
### The distribution of the recorded deaths during the past 24 hours

Hospital	Residence	Gender	Age	Chronic
Saint George - Hadath	Baabda	Male	65	Yes
Riyyak Hospital	Chouf	Male	68	Yes
Abu Jawdeh Hospital	Matn	Male	77	Yes
Tal Chiha Hospital	Beqaa Gharby	Female	82	Yes
Baalbeck Gov Hospital	Baalbeck	Male	69	Yes
Saint George – Hadath	Baabda	Male	76	Yes
Saint George – Hadath	Baabda	Female	66	Yes
Berri Gov Hospital	Saida	Male	74	Yes
Riyyak Hospital	Zahleh	Female	83	Yes

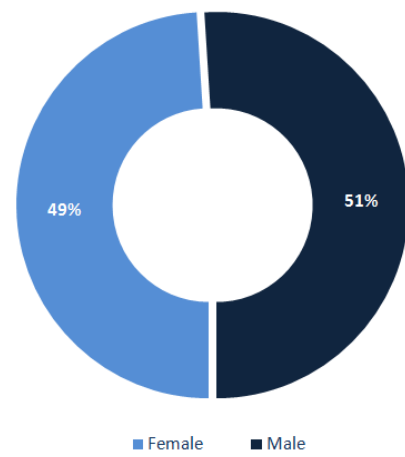
## Number of individuals in home isolation and percentage of commitment to isolation



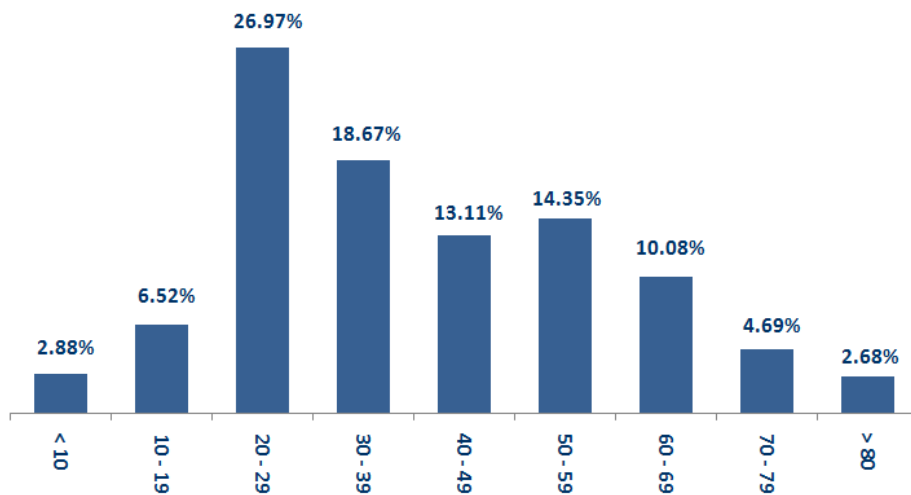
## Exposure



## Distribution according to gender



## Distribution by age





---

**Decisions and actions taken – 11/02/2020**

---

---

**Ministry of Public Health**

---

- The Ministry of Public Health opened a special section for coronavirus patients at Al-Rayyan Hospital in Baalbek
- The Ministry of Public Health reviewed the Deir Al-Ahmar Medical Center and its equipment and gave directions to open a department for treating corona patients
- The Ministry of Public Health reported that PCR examinations had been completed for flights that arrived in Beirut and were conducted at the airport on 10/29/2020 and 10/30/2020, and the results showed the presence of twenty (20) positive cases distributed as follows:

Arriving from	Company	Flight Number	Number of Positive Cases
10/29/2020			
Istanbul	MEA	266	1
Erbil	MEA	325	1
Al Najaf	MEA	327	1
Istanbul	MEA	268	1
Cairo	MEA	307	2
10/30/2020			
Baghdad	Iraqi Airways	131	1
Istanbul	MEA	266	1
Cairo	Egypt Airways	711	1
Algeria	MEA	254	6
Istanbul	MEA	268	2
Istanbul	Turkish Airlines	826	1
Istanbul	Pegasus	863	1
Adana	Pegasus	6700	1
<b>Total</b>			<b>20</b>

---

**Lebanese Red Cross**

---

237,429	Number of PCR tests transferred to laboratories	53,576	Number of additional ambulance centers ready to respond	48	ambulance centers	7,429 (55 New)	cases transferred to hospitals
166	Number of volunteers trained to transfer PCR tests	1,498	Number of trained paramedics	8,824	total number of respondents	98,587	number of those benefiting from awareness *sessions
967	The number of university volunteers trained to follow up on prevention measures in companies and institutions	291	Number of university volunteers trained to conduct awareness sessions	550	total LRC volunteers for covid19	8,721	number of trained managers for isolation centers
4,560 (10 New)	Number of beneficiaries from educational electronic platforms COVID-19	261,661 (37 New)	Number of distributed equipment	1,252,049	total distriibuted posters, brochures, and flyers on covid19 prevention	754 (8 New)	number of rpisons that have been disinfected

---

## General Directorate of Internal Security Forces

---

The number of seizure records during the past 24 hours					The total number of records since 03/08/2020		
Written records of violating institutions (absorptive capacity and preventive measures)					5		
Written records of persons violating the decision to wear a mask					0	Beirut	21,757
Written records of people violating the general mobilization decision (Aragil* and social distancing)					275	Mount Leb	21,919
<b>Total</b>					<b>280</b>	Beqaa	9,151
						North	7,620
Beirut	Mount Leb	Beqaa	North	South		South	8,231
52	177	22	6	23		<b>Total</b>	<b>68,678</b>

---

## General Directorate of State Security

---

Coronavirus cases were reported in several governorates

- Notification of the percentage of compliance with the general mobilization decision in the governorates, which came as follows within the past 24 hours:

Beirut	South	North	Akkar	Beqaa	Nabateih	Baalbek Hermel	Mount Leb
45%	51%	45%	41%	77%	85%	10%	40%

---

## General Directorate of General Security

---

-The report of the death of two people in Jbeil and Nabatiyeh due to the Corona virus.

- Reporting the commitment of the municipalities to the decision of the Minister of Interior and Municipalities:

Municipalities that abided by the decision	Municipalities didn't abide by the decision
Hasbaya, Al-Manara, Qaa Al-Reem, Jdita, An-Nabi Sheth, Rahba	Kafr Zabad, Ain Kafr Zabad, Andaqat

- Follow up the implementation of the required security and preventive measures at the airport, ports and border crossings.
- Reporting cases registered in the various districts and cases in home quarantine.

---

## Ministry of Public Works and Transportation

---

Departing Flights		Arriving Flights	
Number of Flights	42	Number of Flights	44
Number of Departing Individuals	4,794	Number of Arrivals	4,304

Port	Entered			Left		
	Import	Direction	#	Export	Direction	#
Beirut	Cattles	Ovhakiv	1			
	Containers	Marsaxlokk	1			
Jbeil	Diesel	Beirut	1	Blank	Gbraltar	1
Jouneih				Fuel Oil	Zahrani	1
<b>Total</b>			<b>3</b>			<b>2</b>

---

### General announcements

---

Based on the recommendations of the Committee for the Follow-up of Preventive Measures and Procedures for Coronavirus No. 710 / AJAD on 10/30/2020, the Ministry of Interior and Municipalities issued Resolution No. 1358 on 11/1/2020 regarding the continued closure of some villages and towns due to the high number of infections. Corona virus in it. The decision stated the following:

- Determining the times of exit and entry to the streets and roads in all Lebanese regions covered and not covered by the closure decision
  - The continued closure of bars, cabarets, and nightclubs, and the banning of public and private parties, social events and gatherings on the entire Lebanese territory, and permission for restaurants and cafes, provided that they do not exceed 50% of the absorption rate and adhere to health conditions (safe distance, not overcrowding)
  - When necessary, citizens are obliged to wear a mask to cover the nose and mouth when traveling and to adhere to health conditions (safe distance, not overcrowding)
  - It is exclusively for the Minister of Education and Higher Education to take the decision to open or close educational institutions and administrative units
  - Determining the number of people traveling in public and private means of transport with the obligation to wear masks for the driver and passengers
- Other measures:
- Full closure of the towns mentioned in the decision starting from 5:00 a.m. on Monday 11/2/2020 until 5:00 a.m. on Monday 9/11/2020
  - To suspend work in all official and private institutions located within the scope of these villages and towns, with the exception of institutions and departments of the Ministry of Education and Higher Education, according to what the Minister deems appropriate.
  - Coordination with the religious authorities in terms of closing places of worship and canceling religious events
- Excluding some sectors and employees from the decision, with the necessity to keep the job card in order to present it when necessary
- Assigning governors to:
- Determine the municipal zone in the received towns Take the necessary measures to implement this decision and request the support of the General Directorate of Internal Security, when necessary
  - Emphasize on citizens the need to adhere to public safety procedures and to adhere to wearing a mask when traveling in case of necessity
  - Assigning the district attorneys to instruct the mayors to review the lists of positive cases on the IMPACT platform daily and coordinate with the judiciary doctor and the Lebanese Red Cross to take the appropriate decision
- Assigning the General Directorate of Internal Security Forces to strictly enforce this decision and suppress violations of public mobilization decisions, and to organize arrest records against violators.

**Note: The decisions can be found at [www.drm.pcm.gov.lb](http://www.drm.pcm.gov.lb)**

---

## **Examples of lack of adherence to safety measures**

---

Failure of some municipalities to abide by the Ministry of Interior and Municipalities Decision No. 1025/2020 related to the closure of towns that have a high risk of the spread of the epidemic.

- Demand gatherings and demonstrations.
- Failure to comply with the preventive measures and procedures required in several stores and markets (putting on a muzzle or face mask, sterilizing hands, maintaining a safe distance).
- Non-compliance with the 50% occupancy rate in several restaurants and amusement game centers.
- Gatherings for social events.
- Failure of those in contact with confirmed cases to adhere to home isolation procedures until the results of the laboratory tests are issued.

**If you feel any symptoms, call directly the hotline of the Ministry of Public Health: 1214 or 01/594459**

**Laboratories that did not comply with the procedures approved by the MoPH About the information required to be recorded for infected cases within the past 24 hours**

<b>Laboratories that did not specify the Governorate</b>	
<b>Laboratory/Hospitals</b>	<b>Cases</b>
Laboratoire Inovie / Fayyadieh	1
Hadi Laboratory/ Haret Hreik	63
Mount Lebanon Hospital	3
Mashrek Medical Diagnostic Center MDC	3
Rafic Hariri University hospital	4
Beirut Airport	11
American University of Beirut	4

<b>Number of positive cases without specifying the place of residence</b>	
<b>Laboratory/Hospitals</b>	<b>Cases</b>
American University of Beirut	1
Hadi Laboratory/ Haret Hreik	64
Mashrek Medical Diagnostic Center MDC	16
Mount Lebanon Hospital	14
Rafic Hariri University hospital	4
Ragheeb Hareb Hospital	2
Laboratoire Inovie / Fayyadieh	1
Hospital Hammoud / Saida	2
Hospital Sacre Coeur	1
Berri Governmental Hospital	1
Beirut Airport	11

<b>Number of positive cases without a phone number</b>	
<b>Laboratory/Hospitals</b>	<b>Cases</b>
Hadi Laboratory/ Haret Hreik	4
Mount Lebanon Hospital	9
Beirut Airport	2

## A list of the laboratories accredited by the MoPH to conduct PCR tests

### المختبرات الحكومية المؤهلة إجراء التشخيص المخبري لفيروس كورونا بطريقة الـ RT-PCR

المختبر	الموقع
مستشفى رفيق الحريري الجامعي RHUH	بيروت
مستشفى حلبا الحكومي	حلبا
مستشفى طرابلس الحكومي	طرابلس
مستشفى البترون الحكومي	البترون
مستشفى قنوح كسروان الحكومي (البوار)	كسروان
مستشفى نبيه يزّي الحكومي الجامعي	النبطية
مستشفى تينين الحكومي	تينين
مستشفى بنت جبيل الحكومي	بنت جبيل
مستشفى بعلبك الحكومي	بعلبك
مستشفى الرئيس الياقوت الهراوي الحكومي	زحلة

### مختبرات المستشفيات العسكرية

Hôpital Militaire Central	المستشفى العسكري المركزي في بيروت	بيروت
---------------------------	-----------------------------------	-------

### المختبرات المؤهلة لأخذ عينات "المسحات الأنفية" بطريقة Drive- thru

مختبر ميديكال دياغنوستيك تريتمانت سنتر (الحمراء)	بيروت
Medical Diagnostic Treatment Center (MDTC)	بيروت
مختبر ميد لاب MedLab SAL CIC ALS (الحمراء - الجبلينور)	بيروت
مختبرات عياني Itani Medical Laboratories (المرعة)	بيروت
مختبر أ ب سي ABC Laboratories	الأشرفية
مختبرات معوض الطبية Mouawad Medical Laboratory	التيّاح
مختبرات الشياح (د. فواد ربحان) Rihan Medical Center	التيّاح
مختبر إكسبرت لاب Expert Lab	لنصوريّة
مختبر لايف لاب Life LAB	بعلبك
مستشفى الرياق Riyak Hospital	رياق

المختبرات الخاصة المؤهلة لإجراء التشخيص المخبري لفيروس كورونا بطريقة الـ RT-PCR

المختبر	الموقع
AUBMC مستشفى الجامعة الأميركية	بيروت
Hotel-Dieu de France (HDF) مستشفى أوتيل ديو الجامعي	بيروت
مختبرات رودولف ميريو (الجامعة اليسوعية - المتحف) Laboratoire Rodolphe Mérieux (Université Saint-Joseph)	بيروت
Saint-George Hospital - UMC مستشفى القديس جارجيوس الجامعي	بيروت
Makassed General Hospital مستشفى المقاصد	بيروت
LAU Medical Center - Rizk Hospital مستشفى رزق الجامعي	بيروت
Hôpital Libanais Geitawi - CHU مستشفى اللبناني الجعيتاوي الجامعي	بيروت
Hôpital Notre-Dame du Rosaire مستشفى الوردية	بيروت
Doctor 's Center مختبر مركز الأطباء	بيروت
Fontana Laboratories (الحمرا) مختبر فونتانا	بيروت
مختبر الأمن العام (العنابية)	بيروت
Laboratoire Jabre-Ghorra مختبرات جبر وغرة	بيروت
Saint Marc Medical & Diagnostic Center مختبر السان مارك	بيروت
Laboratoire Moderne (Modern Lab- Berjaoui) المختبرات الحديثة	الغبيوي
Sahel General Hospital (SGH) مستشفى الساحل	الغبيوي
مستشفى الزهراء الجامعي	الغبيوي
Al Zahraa Hospital - UMC مستشفى الرسول الأعظم	برج الزواجة
مستشفى بهمن	
Al Rassoul Al Aazam Hospital Bahman Hospital	حارة حريك
مختبر ناتيونال دياغنوستك سرفيس كومباني	
National Diagnostic Services Company (NDSC)	حارة حريك
Medical Diagnostic Center مختبر الدكتور محمود عثمان - مركز التحاليل الطبية	للمرجة
American Diagnostic Center (ADC) مختبر أميريك دياغنوستك سنتر	الجناب
Mount Lebanon Hospital مستشفى جبل لبنان	بعنا
Hôpital Saint-George – Hadath مستشفى السان جورج الحدث	بعنا
Al Hadi Laboratory مختبر الهادي	بعنا
INOVIE-Liban مختبر	بعنا

Hôpital du Sacré- Coeur مستشفى قلب يسوع	الحازمية
Clinigene مختبر كلينيجان	الحازمية
Hôpital Dr.Samir Serhal مستشفى سرحال	المتن
Transmedical for Life مختبر ترانس ميدكال فور ليف	المتن
Haroun Hospital مستشفى هارون	الزلفا
Bellevue Medical Center (BMC) مستشفى بلفو	المنصورة
Hôpital Albert Haykal مستشفى هيكال	الكورة
Centre Hospitalier du Nord (CHN) مركز الشمال الإيستفاني	زغرتا
Mazloum Hospital مستشفى المظلوم	طرابلس
Al Mounla Hospital مستشفى الملا	طرابلس
Nini Hospital مستشفى النيني	طرابلس
مختبر ميكروبيولوجيا الصحة والبيئة LMSE - المعهد العالي للدكتوراه، الجامعة اللبنانية	طرابلس
CHU - Notre-Dame des Secours مستشفى سيدة المعونات الجامعي	جبل
Lab Akiki & Boulos مختبر عقيقي وبولس	جبل
Centre Médical Wakim مختبر واكيم	جونية
Ain Wazein Hospital مستشفى عين وزين	الشوف
Hammoud Hospital UMC مستشفى حمود الجامعي	سيدا
Al Karim Medical Laboratory (KML) مختبر الكريم	سيدا
Sheikh Ragheb Harb Hospital مستشفى الشيخ راجب حرب	البيمنة
Sabbah Diagnostic Center (SDC) مختبر الصباح	البيطية
Jabal Amel Hospital مستشفى جبل عامل	صور
Mashrek Diagnostic Center (MDC) مختبر المشرق	صور
Dar Al Amal University Hospital مستشفى دار الأمل الجامعي	بعلبك
Khoury General Hospital مستشفى خوري	زحلة
Medical Care Center (MCC) مختبر ميدكال كير سنتر	زحلة