

Lebanon National Operations Room Daily Report on COVID-19

Saturday, September 19, 2020

Report #185

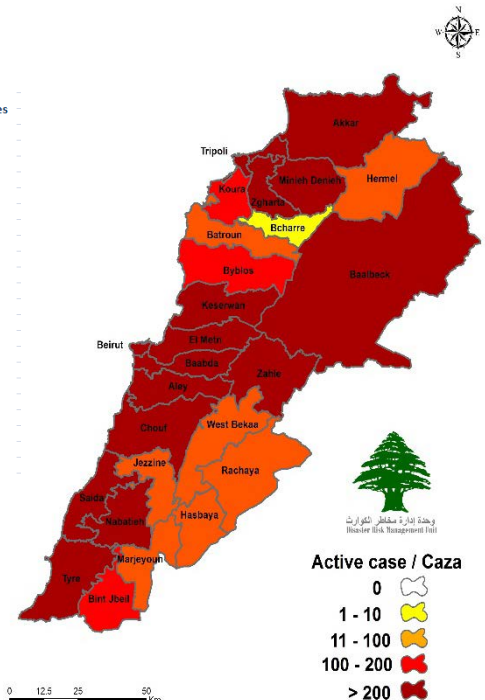
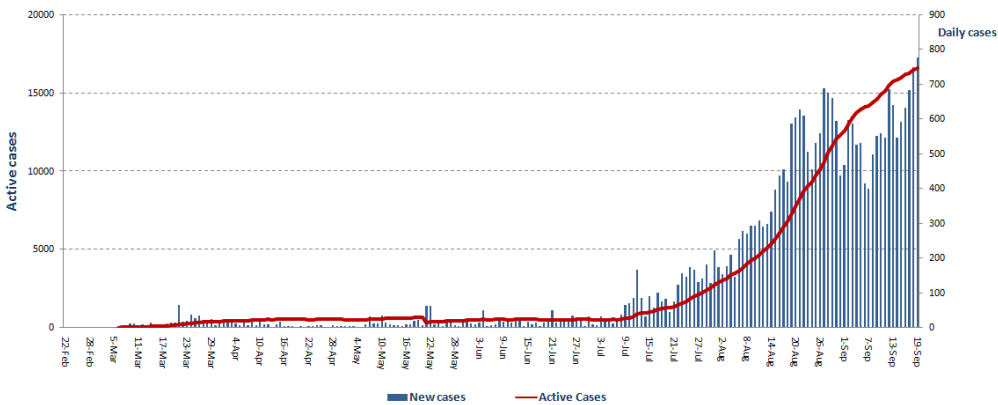
Time Published: 9:30 PM

Active cases 16,571 (73 New)	Total Death since 21/2/2020 286 (5 New)	New Cases 779	Total Cases Since 21/2/2020 28,297																			
Currently Hospitalized 449	Total Recoveries 11,440	7 Expats 772 Locals	1,538 Expats 26,759 Locals																			
Mild Cases 325	Home Isolation Cases 16,122 (47 New)	Cases Registered Among Medical Staff 834 (14 New)	Conducted PCR tests Since 21/2/2020 686,254																			
Cumulative in ICU 124 (3 New)	<table border="1"> <thead> <tr> <th>Lebanon/ Internationally</th> <th></th> <th></th> </tr> </thead> <tbody> <tr> <td>Registered</td> <td>28,297</td> <td>30,826,118</td> </tr> <tr> <td>Total Deaths</td> <td>286</td> <td>958,607</td> </tr> <tr> <td>% of Deaths</td> <td>1.01%</td> <td>3.1%</td> </tr> <tr> <td>Recoveries</td> <td>11,440</td> <td>22,439,383</td> </tr> </tbody> </table>		Lebanon/ Internationally			Registered	28,297	30,826,118	Total Deaths	286	958,607	% of Deaths	1.01%	3.1%	Recoveries	11,440	22,439,383	<table border="1"> <thead> <tr> <th>Expats PCR Tests</th> <th>Locals PCR Tests</th> </tr> </thead> <tbody> <tr> <td> 2,603</td> <td> 9,797</td> </tr> </tbody> </table>	Expats PCR Tests	Locals PCR Tests	 2,603	 9,797
Lebanon/ Internationally																						
Registered	28,297	30,826,118																				
Total Deaths	286	958,607																				
% of Deaths	1.01%	3.1%																				
Recoveries	11,440	22,439,383																				
Expats PCR Tests	Locals PCR Tests																					
 2,603	 9,797																					

*The Above data was last updated at 10:00 PM

Number of Cases by Location

• 6,014 case is Under investigation



Active case / Caza

- 0
- 1 - 10
- 11 - 100
- 100 - 200
- > 200

Beirut	Cases
Ras Beirut	3
Manara	1
Hamra	8
Dar El Fatwa	8
Mseitbeh	1
Qoreitem	3
Zarif	3
Mazraa	11
Borj Abi Haydar	5
Basta El Fawka	1
Tariq Jdeedeh	5
Ras El Nabeh	10
Achrafieh	18
Mar Elias	6
Tallet El Khayyat	1
Basta Tahta	2
Getawi	1
Others	5
Baabda	Cases
Chiah	8
Jnah	8
Ouzai	6
Bir Hassan	5
Madine Riadieh	1
Ramel El Ali	2
Ghobeiry	3
Ein El Rimmaneh	3
Furn El Chibbak	1
Haret Hreik	12
Laylaki	6
Borj El barajneh	9
Mreijeh	8
Hadat	7
Hazmieh	3
Baabda	6
Tahwetet El Ghadir	6
Betchay	2
Khreibeh	1
Others	3
Bint Jbeil	Cases
Bint Jbeil	1
Rmeich	1
Aynata	1
Ein Ebel	1
Shakra	1
Beqaa El Gharby	Cases
Kherbet Kanafar	1
Mansoura	1
Khyara	1
Tal Znoun	1
Hoch I Hareemeh	1
Rashayya	Cases
Dahr El Ahmar	1

Matn	Cases
Borj Hammoud	2
Rawda	2
Sin El Fil	5
Nabaa	1
Bouchrieh	1
Jdeidet El Metn	2
Beit El Chaar	3
Horch Tabet	2
Dekwene	9
Jal El Deeb	3
Antelias	5
Sed El Baouchrieh	1
Zalka	32
Sabtieh	4
Mansouriyeh	6
Baabdat	1
Roumieh	1
Qornet Chehwan	1
Mkalles	1
Nabayh	1
Bekfayya	2
Mazraaet Yashouh	1
Zikrit	2
Hemlaya	1
Deek El Mahdi	3
Sad El Bouchrieh	1
Beit Merry	2
Fanar	9
Mrouj	1
Bsalim	3
Mtayleb	1
Khenshara	1
Ayntoura	1
Dhour El Chweir	1
Others	1
Zahle	Cases
Mar Elias	1
Maallaqa	3
Rassieh	1
El Karak	2
Hoch El Oumara	1
Ksara	1
Jdita	2
Chtoura	1
Bar Elias	3
Kfar Zabad	5
Majdel Anjar	2
Reet	1
Qab Elias	2
Deir Zannoun	1
Riyak	2
Taalabaya	1
Others	4

Aleyh	Cases
EL Amrousiyyeh	1
El Oumara	10
Aley	2
Bleibel	1
Hay El Sillom	7
Aramoun	11
Khaldeh	7
Bshamoun	6
Deir Qoubel	1
Kahale	2
Bhamdoun	1
Btater	1
Others	2
Keserwan	Cases
Sarba	5
Zouk Michael	1
Kaslik	2
Ghadir	2
Adonis	1
Tabarja	1
Haret Sakher	1
Oqeibeh	1
Sehaileh	1
Achkout	1
Jezzine	Cases
Qrayyeh	1
Menieh Duniyeh	Cases
Deir Amar	1
Ezel	1
Mrah El Sreij	1
Menyeh	6
Chouf	Cases
Naameh	3
Baal El Naameh	1
Barja	21
Chehim	3
Anout	1
Mazboud	3
Deir El Qamar	2
Jiyyeh	2
Siblin	2
Jadra	2
Wadi El Zayneh	1
Remileh	6
Joun	1
mghayreh	1
Gharifeh	1
Botmeh	1
Niha	1
Ammatour	2
Others	5
Batroun	Cases
Batroun	2

Baalbeck	Cases
El Wastani	1
Miyye w Miyye	1
Haret Saida	1
El Blata	1
Hlalieh	1
Abra	4
Ghazieh	1
Loubieh	1
Bablieh	1
Ghassanieh	1
Others	4
Jbeil	Cases
Eddeh	4
Amchit	2
Halat	1
Jbeil	7
Qartaboun	1
Hsoun	1
Koura	Cases
Kfar Akka	1
Dahr El Ein	2
Nakhle	1
Dar Bechtar	1
Anfeh	2
Ras Masqa	3
Touratej	1
Kefraya	1
Others	1
Tripoli	Cases
Qebbeh	4
Bab El Ramel	2
Mina	4
Zahrieh	2
Tabbaneh	4
Qalamoun	7
Zaytoun	3
Beddawy	7
Others	49
Akkar	Cases
Halba	2
El boroj	1
Kweikhat	1
Bebnin	2
Qabeet	1
El qorneh	1
Fneidek	1
Wady El Jamous	1
Ein El Zeit	1
Safenet I Dreeb	1
Others	2
Hasbaya	Cases
Hasbaya	1

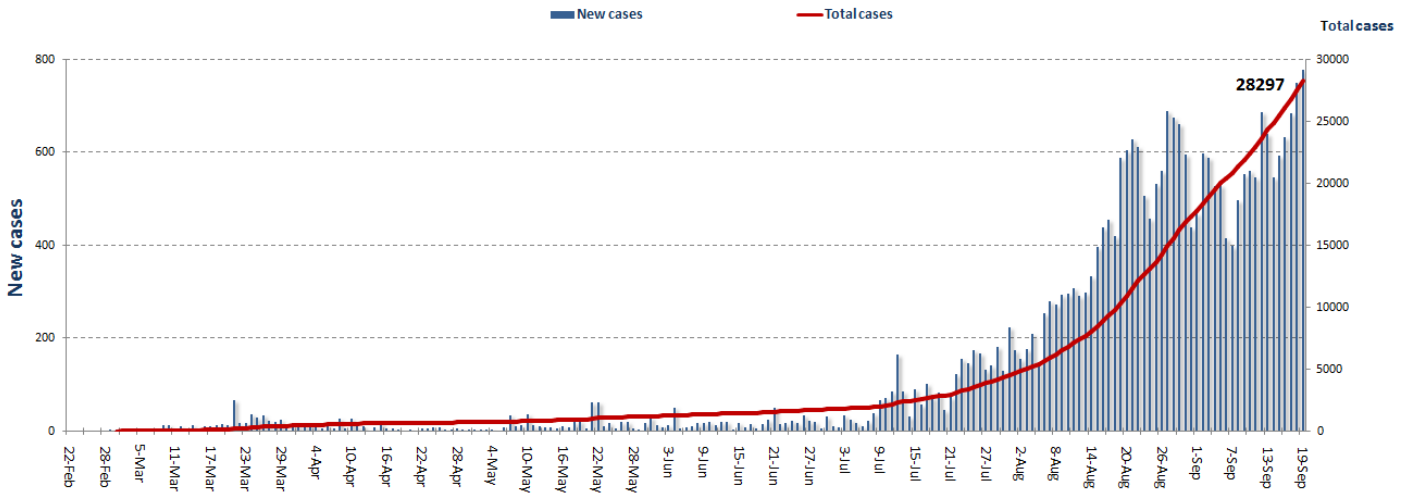
Baalbak	Cases
El Hadat	1
Barqa	1
Chmestar	1
Younin	2
Sreen El Fawka	1
Others	8

Sour	Cases
Qnana	1
Hennaoui	1
Terfalsay	1
Mansoury	1
Others	1

Nabatieh	Cases
Kfarfila	1
Deir El Zahran	1
Qaqaiyet El Jisir	1
Others	1

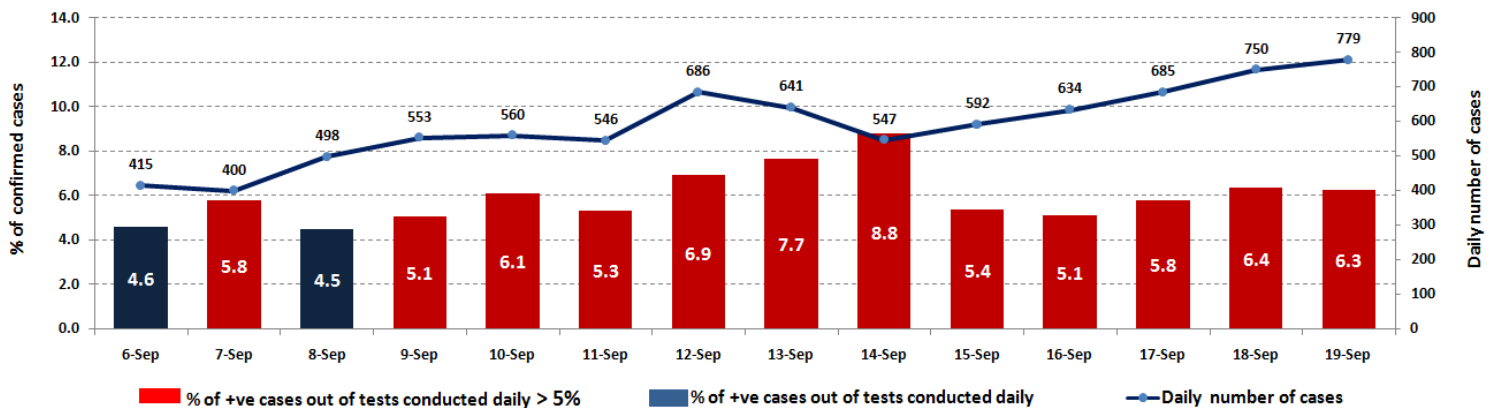
Zghorta	Cases
Zghorta	2
Erde	1
Alma	1
Kfaryasheet	1
Meryata	2

Cases per day

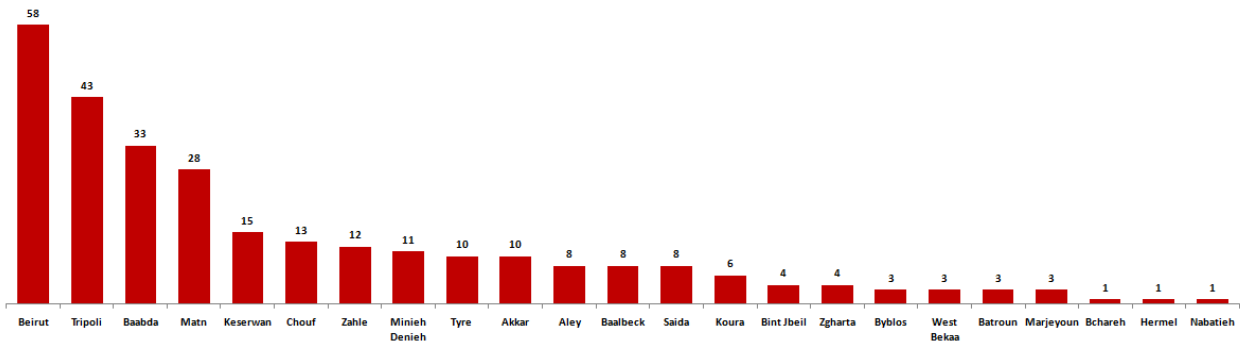


The percentage of positive cases out of the number of daily checks (6 September to 19 September 2020)

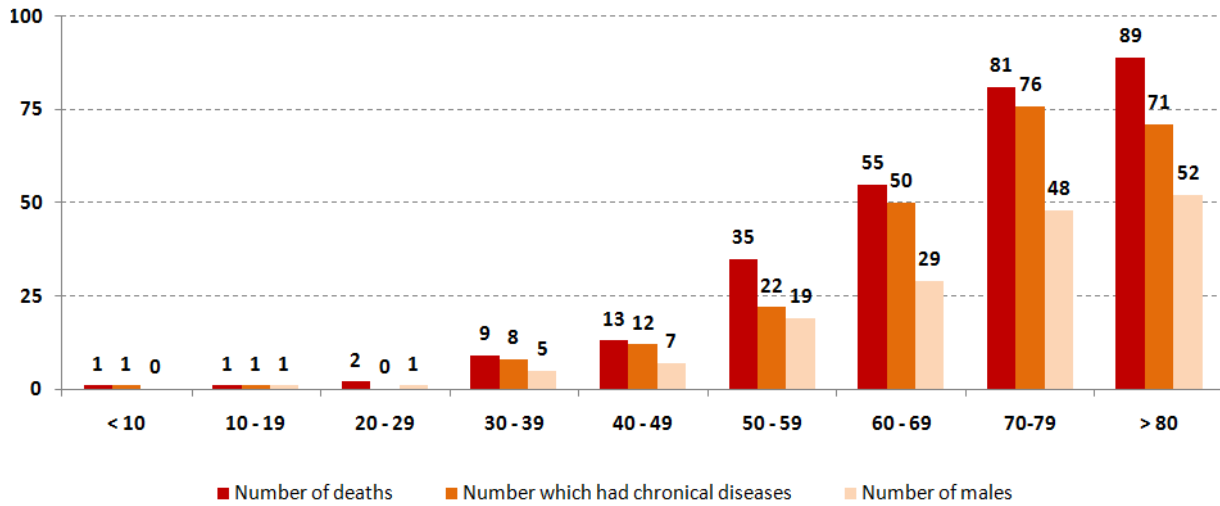
According to the WHO, rates of positivity in testing should remain at 5% or lower for 14 days in a row in order to reopen all sectors



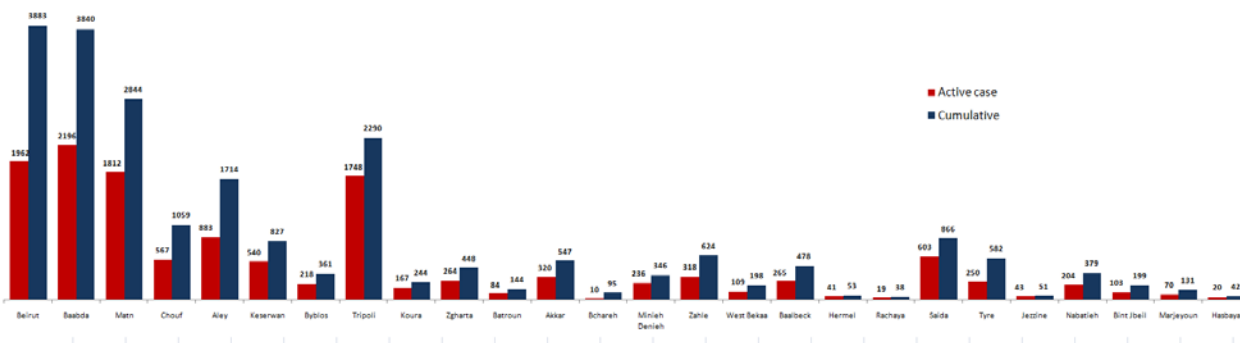
Distribution of deaths by Governorates



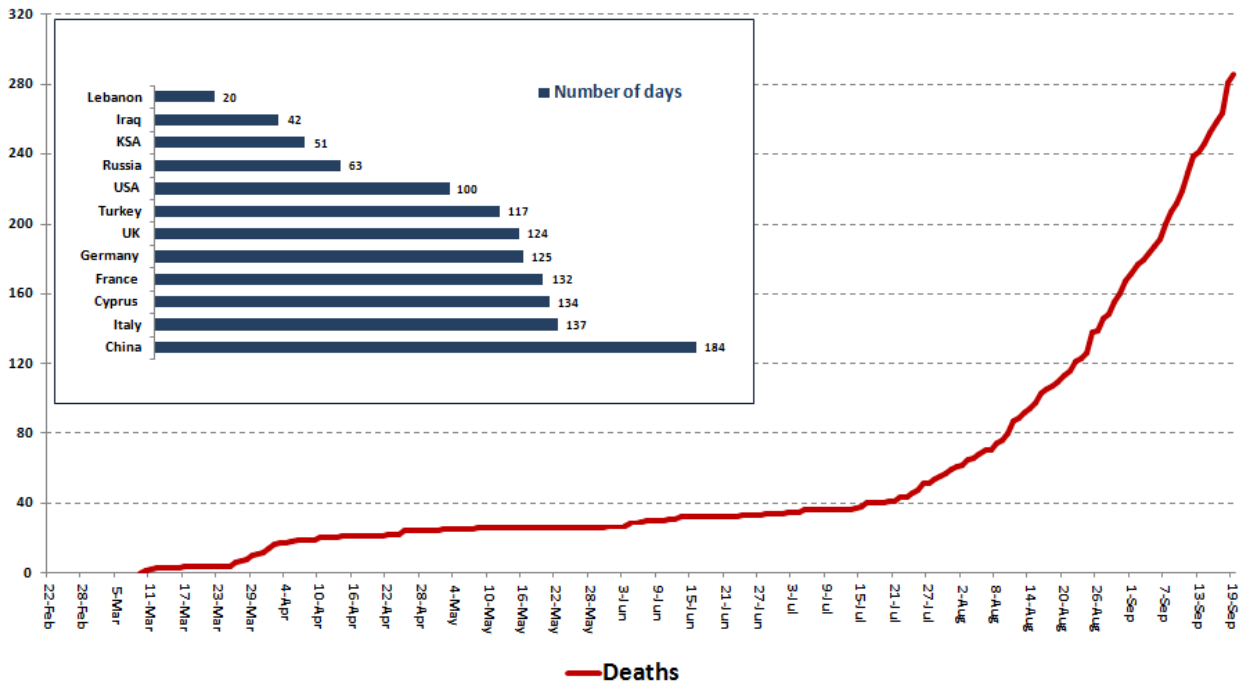
Distribution of deaths by Age



Distribution of Active Cases by Districts



Comparison of the rate of doubling of the number of deaths in Lebanon with other countries (death doubling rate)

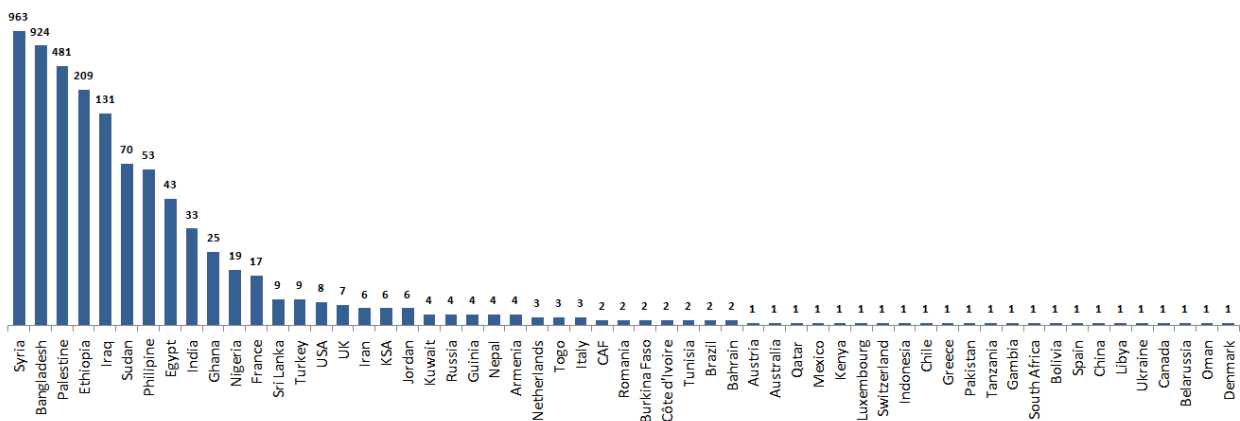


The distribution of the recorded deaths during the past 24 hours

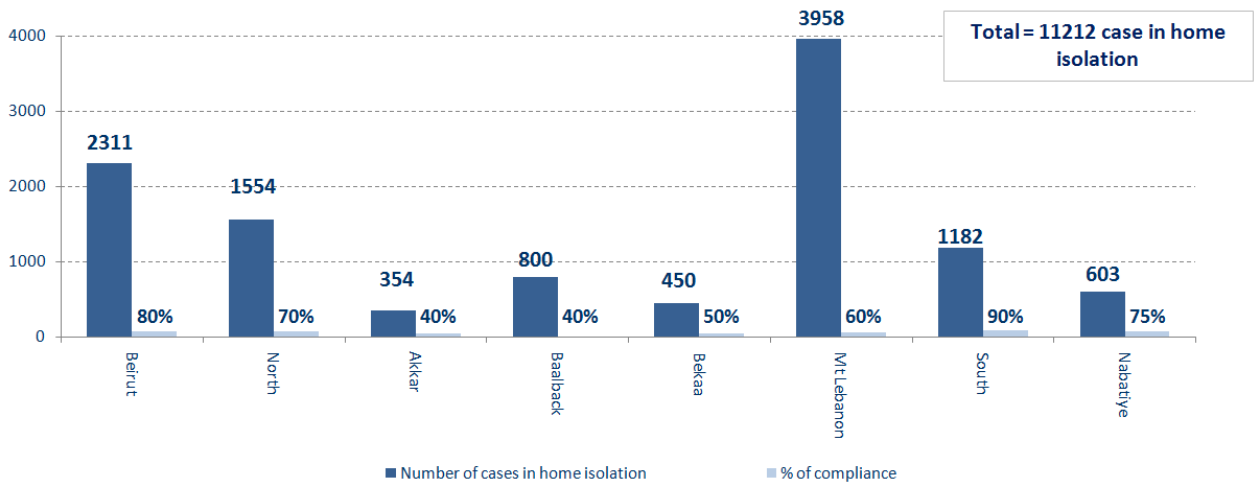
Baabda Gov.	Baabda	Female	68	Yes
Tripoli Gov.	Tripoli	Female	70	Yes
Sahel	Chouf	Male	93	Yes
Hamoud	Saida	Male	66	Yes
El Nini	Tripoli	Male	69	No

Distribution of cases by nationality

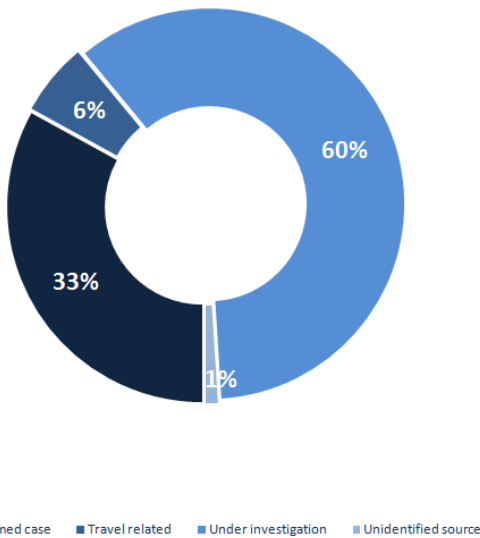
Lebanese : 25212 cases out of 28297 (88%)



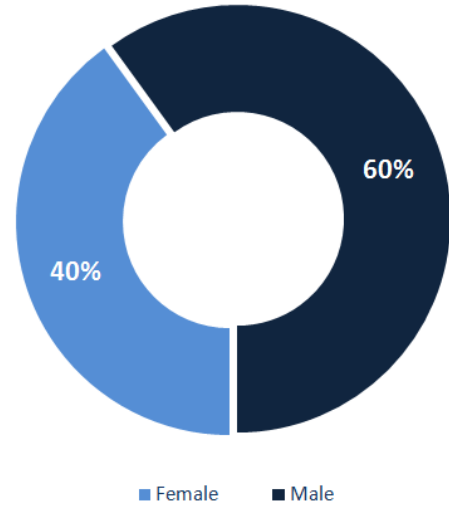
Number of individuals in home isolation and percentage of commitment to isolation



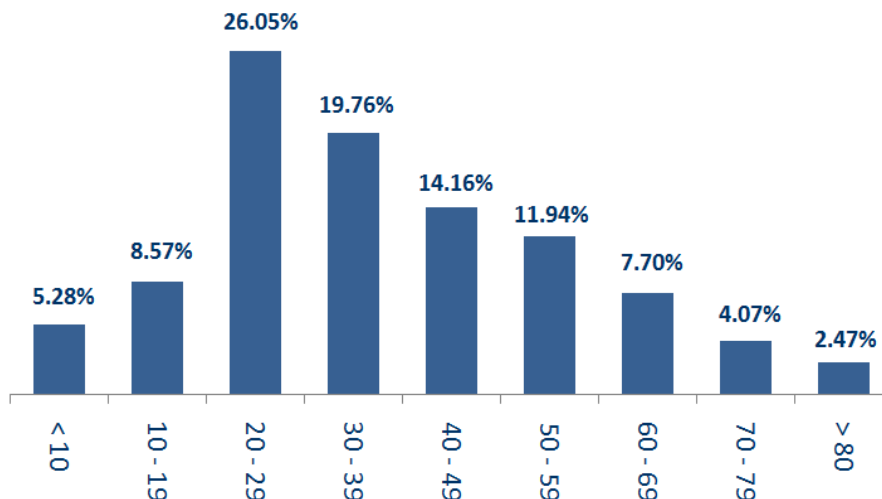
Exposure



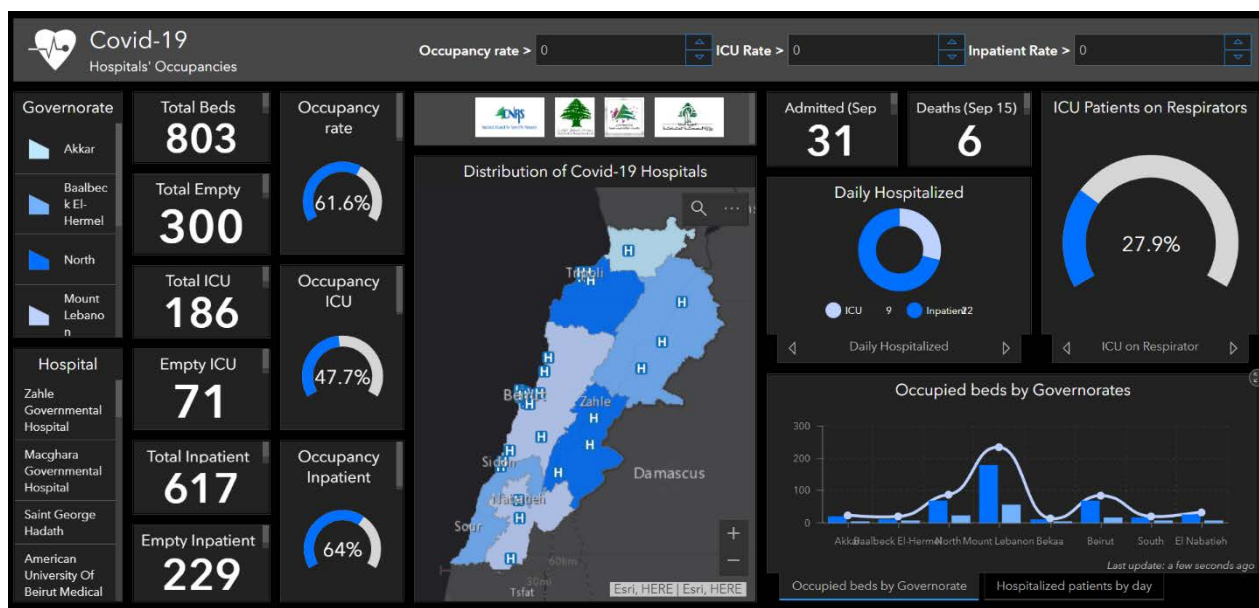
Distribution according to gender



Distribution by age



The number of beds available for those infected with Coronavirus and the occupancy rate



For daily information on all the details of the bed distribution available for Covid-19 patients in the various governorates according to the hospitals

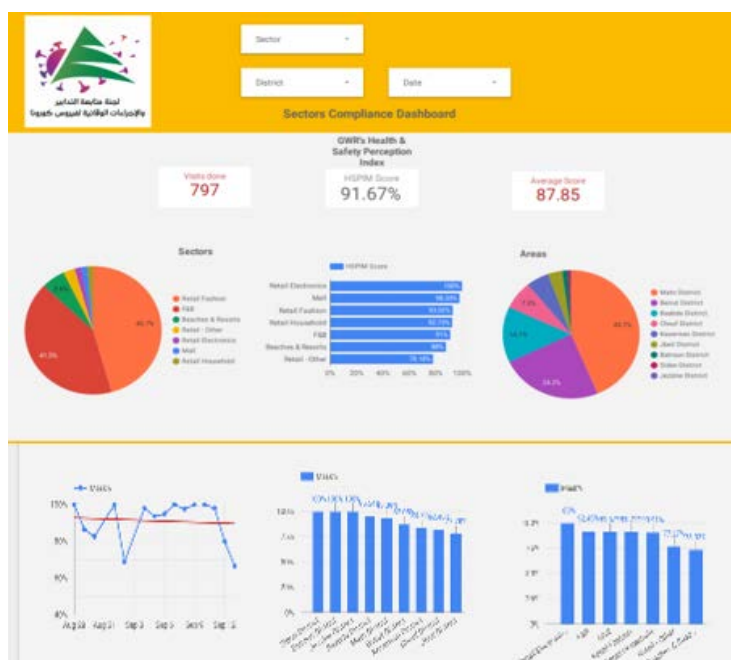
- Computer: <https://gisleb.cnrs.edu.lb/portal/apps/opsdashboard/index.html#/34b32db8030d4f229fc5db9ab686cca9>
- Mobile: <https://shorturl.at/cnqJ2>

Online platform to track sector commitment in general mobilization procedures

Based on the recommendation issued by the National Committee for Follow-up of Preventive Measures and Measures to Confront the Coronavirus to open all sectors, provided that the general mobilization procedure (safe distance, muzzle, and hand sterilization) be applied, a special electronic platform was created that allows monitoring and measuring the percentage of commitment by various sectors on an ongoing basis.

The detailed results can be viewed directly at the following link:

<http://bit.ly/covidsectordata>



Decisions and actions taken – 19/09/2020

Ministry of Public Health

The Ministry of Public Health is working to develop a rapid response plan for prisons in Lebanon, after recording infections with the Coronavirus among prisoners, in cooperation between the Ministry and its partners in the health and humanitarian field, as the plan will include steps and escalatory measures based on the evaluation of the spread of the virus in a way that allows securing the required health and hospital accompaniment.

Lebanese Red Cross

226,727 (1965 New)	Number of PCR tests transferred to laboratories	44,889 (194 New)	Number of additional ambulance centers ready to respond	48	ambulance centers	4,985 (44 New)	cases transferred to hospitals
166	Number of volunteers trained to transfer PCR tests	1,498	Number of trained paramedics	8,591	total number of respondents	77,206 (512 New)	number of those benefiting from awareness *sessions
967	The number of university volunteers trained to follow up on prevention measures in companies and institutions	217	Number of university volunteers trained to conduct awareness sessions	550	total LRC volunteers for covid19	8,430	number of trained managers for isolation centers
4,204 (2 New)	Number of beneficiaries from educational electronic platforms COVID-19	89,817 (35 New)	Number of distributed equipment	1,236,031	total distributed posters, brochures, and flyers on covid19 prevention	516 (6 New)	number of prisons that have been disinfected

General Directorate of State Security

- Investigating and following up on suspected and positive cases and cases in home quarantine for residents and expatriates.
- Sending warnings and closing a number of violating commercial stores in the various regions.

Beirut	South	North	Akkar	Beqaa	Nabateih	Baalbek Hermel	Mount Leb
30%	51%	64%	45%	90%	90%	10%	35%

General Directorate of Internal Security Forces

- Internal Security Forces circulated the preventive measures that must be followed when traveling by cars and using shared transportation and public cars.
- Writing arrest records against violators of the general closure decision

The number of seizure records during the past 24 hours					The total number of records that have been organized against violators of the general mobilization decisions since 03/08/2020		
Written records of violating institutions (absorptive capacity and preventive measures)					0		
Written records of persons violating the decision to wear a mask					0	Beirut	20,637
Written records of people violating the general mobilization decision (Aragil* and social distancing)					20	Mount Leb	18,812
Total					20	Beqaa	8,023
						North	6,783
Beirut	Mount Leb	Beqaa	North	South	South	6,766	
0	0	12	0	8	Total	61,021	

Ministry of Public Works and Transportation

Departing Flights		Arriving Flights	
Number of Flights	34	Number of Flights	34
Number of Departing Individuals	4,012	Number of Arrivals	3,330

Port	Entered			Left		
	Import	Direction	#	Export	Direction	#
Beirut	Cattles	Alexandarun	1	Cattle	Dmeit	1
	Battleship	Forces	2	Cinnamon	Turkey	1
Saida	Metals	Turkey	2			
Zahrani	Oil Gas	Tunsia	1			
Sweden	Fuel Oil	Sweden	1			
Jbeil	Diesel	Beirut Port	1	Diesel	Beirut Port	1
			8			3

General announcements

The following recommendations were issued by the Committee for Follow-up of Preventive Measures and Procedures for Coronavirus on 9/16/2020:

- That the Ministry of Public Health prepare a list of countries in which the PCR examination is considered reliable and approved in Lebanon, and another list of countries where this examination is not reliable and is not accredited in Lebanon.
- That the Ministry of Public Works and Transport circulate through the General Directorate of Civil Aviation to the concerned authorities the approved procedures as follows:

Countries where PCR testing is reliable and approved in Lebanon	Countries where PCR testing is considered unreliable and unsupported in Lebanon
<ul style="list-style-type: none"> - The expatriate's possession of a negative test result dating back to a maximum of 96 hours from the date of arrival in Lebanon. - Choose to quarantine for a period of 9 days or re-examination after a period of 72 hours 	<ul style="list-style-type: none"> - The expatriate's possession of a negative test result dating back to a maximum of 96 hours from the date of arrival in Lebanon. - Perform a PCR examination upon arrival at Beirut International Airport. - Commitment to quarantine for a period of 5 days (place of residence or hotel according to the approved instructions). - Members of diplomatic missions accredited in Lebanon are exempt from conducting the examination upon arrival at the airport, provided that the examination procedure is performed after the five-day quarantine period has expired

- That the Ministry of Tourism circulate to restaurants, cafes, restaurants and tourism establishments full compliance with the Smoking Reduction Law No. 174/2011, while restricting the provision of hookahs to open spaces and adhering to all preventive measures circulated by the Ministry in this regard.
- Reopening of cinemas, theaters, amusement parks, parks and indoor spaces for children's games, provided that the occupancy rate of 50% as a maximum is adhered to and that all preventive measures and measures are adhered to.
- The Minister of Interior and Municipalities issued Decision No. 1129 of 9/17/2020 to amend the opening and closing times for industrial and commercial enterprises, as the timing of the prevention of exit and entry into the streets was kept between the first hour of midnight until six in the morning of every day, and approved the recommendations issued For the meeting of the Committee for Follow-up of Preventive Measures and Measures to Confront the Coronavirus on 9/16/2020.

Note: The decisions can be found at www.drm.pcm.gov.lb

Examples of lack of adherence to safety measures

- Demand gatherings and demonstrations.
- Failure to comply with the preventive measures and procedures required in a number of stores and markets (putting on a muzzle or face mask, sterilizing hands, maintaining a safe distance).
- Non-compliance with the 50% occupancy rate in several restaurants and amusement game centers.
- Gatherings for social events.
- Failure of those in contact with confirmed cases to adhere to home isolation procedures until the results of the laboratory tests are issued.

If you feel any symptoms, call directly the hotline of the Ministry of Public Health: 1214 or 01/594459

A list of the laboratories accredited by the MoPH to conduct PCR tests

Public Hospitals			
Hospital Name	Location	Hospital Name	Location
Rafic Hariri University Hospital	Beirut	Bint Jbeil Governmental Hospital	Bint Jbeil
Tripoli Governmental Hospital	Tripoli	President Elias Hrawi Governmental Hospital	Zahle
Fattouh Keserwan Governmental Hospital	Kesrwen	Batroun Governmental Hospital	Batroun
Baalbek Governmental Hospital	Baalbek	Halba Governmental Hospital	Halba
Tibnin Governmental Hospital	Tibnine		
Private Hospitals			
Hospital/Lab Name	Location	Hospital/Lab Name	Location
AUBMC	Beirut	MLH	Baabda
Saint George Hospital	Beirut	Saint Georges Hospital	Baabda
Hôpital Notre Dame des Secours (CHU – NDS)	Jbeil	Ain w Zein Hospital	Chouf
HDF/Merieux/USJ	Beirut	Hamoud Hospital	Sidon
Makkassed General Hospitals	Beirut	Dar el Amal Hospital	Baalbek
LAUMC	Beirut	Sheikh Ragheb Harebb Hospital	Nabatieh
Wardieh Hospital	Beirut	Al Hadi Laboratory	Baabda
Al Mathlum Hospital	Tipoli	Akiki Laboratory	Byblos
Al Mounla Hospital	Tripoli	MDC	Tyr
Haykal Hospital	Koura	Jabal Amel Hospital	Tyr
Serhal Hospital	Metn	Doctor's Center	Beirut
HLG	Beirut	KML	Sidon
SDC	Nabteih	ADC*American Diagnostic Center	Beirut
INOVIE Laboratory	Baabda	Khoury Hospital	Zahle
TRANSMEDICAL Laboratory	Metn	Sacre Coeur	Hazmieh
MCC	Zahle	BELLEVUE Hospital	Mansourieh
CHN	Zaghrta	LMSE	Tripoli
Clinigen Laboratory	Hazmieh	Al Rasoul Al Aazam Hospital	Beirut
Centre Medical Moderne	Ghbraye	Nabni Hospital	Tripoli
MDTC	Hamra		

Note: Some positive test results are sent from the highlighted laboratories to the Ministry of Public Health, that does not include a phone number to track cases, which contributes to the spread of the epidemic and unknown cases