

Lebanon National Operations Room Daily Report on COVID-19

Monday, October 19, 2020

Report #215

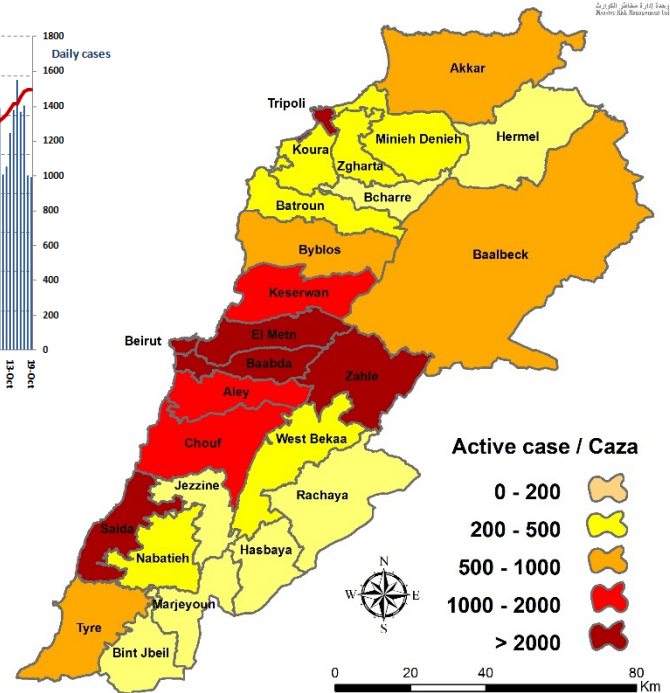
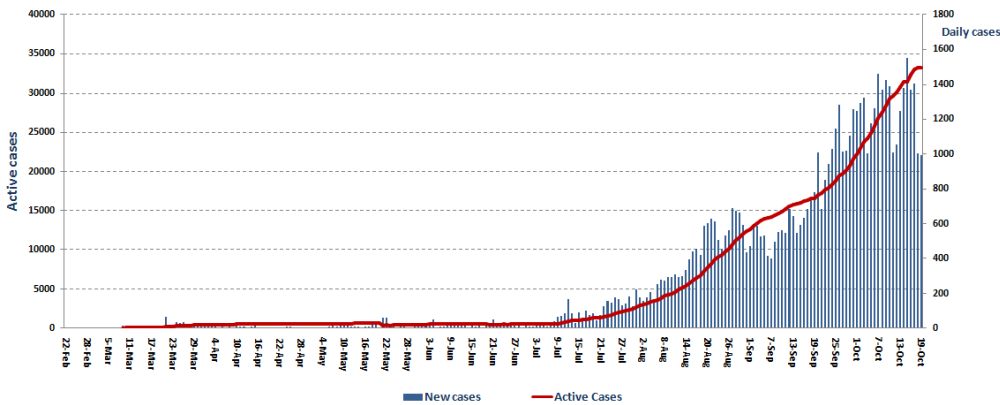
Time Published: 10:30 PM

| | | | | | | | |
|---|--------------|--|-----------------|------------------------------|--|----------------------------------|--|
| 995 New Cases | | 62,944 Total Cases since 21.2.2020 | | 526 Total Deaths | | 28,955 Total Recovered | |
| 937 Residents | 58 Expats | 60,934 Residents | 2,010 Expats | 6 New Deaths | | 993 New Recovered | |
| 0 Deleted status due to its recurrence | | 1,289 Total Cases in the Health Sector | | 33,463 Total Active Cases | | 639 Hospitalized Cases | |
| 17 New Cases in the Health Sector | | 32,834 Cases in Home Isolation | | 428 Mild Cases | | 211 Total Cases in ICU | |
| 2 New Cases in ICU | | | | | | | |
| 1,018,625 COVID-19 Tests since 21.2.2020 | | Lebanon Status compared to the World | | 🇱🇧 | | 🌍 | |
| 1,076 COVID-19 Tests at Airport within 24 hrs. | | 4,415 COVID-19 tests for residents within 24 hrs. | | Total Cumulative | | 62,944 | |
| | | | | Total Deaths | | 526 | |
| | | | | Deaths percentage | | 0.83% | |
| | | | | Total recoveries | | 28,955 | |
| | | | | | | 40,462,338 | |
| | | | | | | 1,120,715 | |
| | | | | | | 2.76% | |
| | | | | | | 30,232,844 | |

Ref: Ministry of Public Health Data

Number of Cases by Location

- 10,706 case is Under investigation



| Beirut | 63 |
|------------------|-----------|
| Ein Al Mreisseh | 1 |
| Ras Beirut | 1 |
| Raouche | 16 |
| Hamra | 7 |
| Ein Al teeneh | 1 |
| Dar Al Fatwa | 3 |
| Mazraa | 3 |
| Borj Abi Haidar | 1 |
| Basta Al Fawka | 1 |
| Tariq Al Jdeedeh | 6 |
| Ras Al Nabaa | 3 |
| Gemmayze | 1 |
| Mar Michael Nahr | 1 |
| Ashrafieh | 6 |
| Others | 12 |
| Baabda | 20 |
| Chiah | 3 |
| Jnah | 2 |
| Ouzai | 2 |
| Bir Hassan | 5 |
| Ghobeiry | 3 |
| Ein Al Rimaaneh | 1 |
| Forn Al Shebak | 1 |
| Haret Hreik | 3 |
| Lailaky | 5 |
| Borj Al Brajneeh | 9 |
| Mreijeh | 3 |
| Tahweetet Ghadir | 10 |
| Baabda | 3 |
| Hazmieh | 1 |
| Fayadieeh | 2 |
| Hadat | 11 |
| Kfarshima | 1 |
| Haret Hamzah | 1 |
| Hammana | 2 |
| Others | 15 |
| Byblos | 35 |
| Byblos | 7 |
| Mastita | 5 |
| Blat | 3 |
| Amshit | 4 |
| Halat | 6 |
| Hosrayel | 1 |
| Kour Al Hawa | 1 |
| Ehmej | 1 |
| Meshmesh | 1 |
| Annaya | 1 |
| Lehfed | 1 |
| Bshally | 1 |
| Behdaydat | 1 |
| Hboub | 1 |
| Sheikhan | 1 |

| Chouf | 51 |
|-------------------|------------|
| Saadiyat | 1 |
| Naameh | 2 |
| Chhim | 9 |
| Mazboud | 2 |
| Darayya | 2 |
| Ketermaya | 1 |
| Sibline | 2 |
| Barja | 8 |
| Baasir | 1 |
| Jadra | 1 |
| Wady Al Zainy | 1 |
| Werdaniyeh | 2 |
| Joun | 1 |
| Mgheirieh | 1 |
| Zaarourieh | 4 |
| Semqanieh | 1 |
| Kneeseh | 1 |
| Baaqleen | 1 |
| Baqaata | 4 |
| Ammatour | 1 |
| Kahlounieh | 1 |
| Bater | 1 |
| Saida | 157 |
| Old Saida | 11 |
| Al Blata | 1 |
| Hlalieh | 9 |
| Haret Saida | 15 |
| Miyye w Miyyeh | 4 |
| Ein Al Helwe | 7 |
| Ashrafieh | 1 |
| Majdlyoun | 4 |
| Abra | 9 |
| Bqosta | 2 |
| Ein AL Delb | 1 |
| Ghazieh | 14 |
| Maghdoushe | 4 |
| Darb Al Seem | 1 |
| Qanareet | 1 |
| Zeghedraya | 1 |
| Zrarieh | 2 |
| Adloun | 2 |
| Bablieh | 1 |
| Mazraet Qrayyeh | 1 |
| Sarafand | 7 |
| Bisarieh | 5 |
| Kouthariet Siyyad | 1 |
| Tefahta | 1 |
| Saksakieh | 7 |
| Addousieh | 2 |
| Mazraet Mseileh | 1 |
| Hajjeh | 3 |
| Aqtanit | 1 |
| Ankoun | 3 |
| Kfarhatta | 2 |
| Kfarmelky | 3 |
| Others | 30 |

| Kesrwen | 81 |
|-----------------|-----------|
| Sarba | 4 |
| Kaslik | 2 |
| Zouk Michael | 6 |
| Haret Al Mir | 1 |
| Ghadir | 2 |
| Zouk Mosbeh | 7 |
| Adonis | 5 |
| Haret Sakher | 2 |
| Sahel Alma | 3 |
| Kfar Yassine | 2 |
| Tabarja | 2 |
| Adma & Dafneh | 4 |
| Safra | 4 |
| Bouar | 7 |
| Oqaybeh | 2 |
| Ajaltoun | 1 |
| Ballouneh | 1 |
| Sehaileh | 2 |
| Ghazir | 5 |
| Kfarhbab | 4 |
| Borj AL Ftouh | 1 |
| Aramoun | 1 |
| Ghodras | 1 |
| Dar'oun | 1 |
| Ghbaleh | 4 |
| Qlei'aat | 1 |
| Ashkout | 5 |
| Hrajel | 1 |
| Zahle | 43 |
| Meidan | 1 |
| Barbara | 1 |
| Maallaqa | 3 |
| Hoch Al Oumara | 2 |
| Arady | 2 |
| Ksara | 1 |
| Wady Al Arayesh | 1 |
| Makseh | 4 |
| Taalabaya | 3 |
| Saadnayel | 3 |
| Qab Elias | 2 |
| Mreijat | 4 |
| Bar Elias | 5 |
| Deir Zannoun | 1 |
| Riyak | 4 |
| Kfarzabad | 2 |
| Faour | 1 |
| Others | 3 |
| Jezzine | 4 |
| Jezzine | 1 |
| Mrah Al Hbas | 1 |
| Wady Banqodein | 1 |
| Kfarjarra | 1 |

| Matn | 112 |
|-----------------|-----------|
| Borj Hammoud | 14 |
| Nabaa | 4 |
| Sin El Fil | 4 |
| Jesr Al Basha | 1 |
| Jdeidet Al Metn | 3 |
| Bouchrieh | 7 |
| Dora | 2 |
| Rouda | 1 |
| Sabtieh | 3 |
| Deir Mar Roukoz | 1 |
| Dekwaneh | 10 |
| Antelias | 3 |
| Jal El Dib | 2 |
| Naqqash | 1 |
| Zalqa | 7 |
| Byaqout | 2 |
| Dbayyeh | 6 |
| Deir Aoukar | 2 |
| Mansourieh | 7 |
| Fanar | 6 |
| Bsalim | 4 |
| Mteileb | 2 |
| Rabieh | 3 |
| Rabweh | 6 |
| Breij | 1 |
| Beit Al Shaar | 1 |
| Deek Al Mahdy | 1 |
| Mazraet Yashouh | 3 |
| Ein Alak | 1 |
| Qornet Al Hamra | 1 |
| Broummana | 1 |
| Khenshara | 1 |
| Bteghrine | 1 |
| Aley | 29 |
| Al Amrousieh | 3 |
| Hay Al Sillom | 4 |
| Al Oumara | 3 |
| Aramoun | 5 |
| Bshamoun | 4 |
| Aley | 1 |
| Baysour | 1 |
| Majdelbaana | 1 |
| Others | 7 |
| Tripoli | 39 |
| Zaytoun | 1 |
| Haddadeen | 8 |
| Qebbeh | 8 |
| Zahrieh | 2 |
| Tebbaneh | 1 |
| Mina 1 | 8 |
| Beddawy | 1 |
| Al Jadidah City | 1 |
| Beddawy Camp | 2 |
| Others | 7 |

| Nabatieh | 34 |
|-----------------|----------|
| Nabatieh Tahta | 3 |
| Zebdine | 1 |
| Kfar Rimman | 4 |
| Habboush | 2 |
| Sarba | 1 |
| Houmin Al Fawka | 2 |
| Arab Salim | 2 |
| Roumine | 1 |
| Zefta | 1 |
| Sharqieh | 1 |
| Toul | 1 |
| Nmeirieh | 1 |
| Jebsheet | 5 |
| Ansar | 7 |
| Kfarseer | 1 |
| Western Seer | 1 |
| Hermel | 1 |
| Hermel | 1 |
| Rashaya | 5 |
| Eiha | 1 |
| Dahr Al Ahmar | 3 |
| Others | 1 |

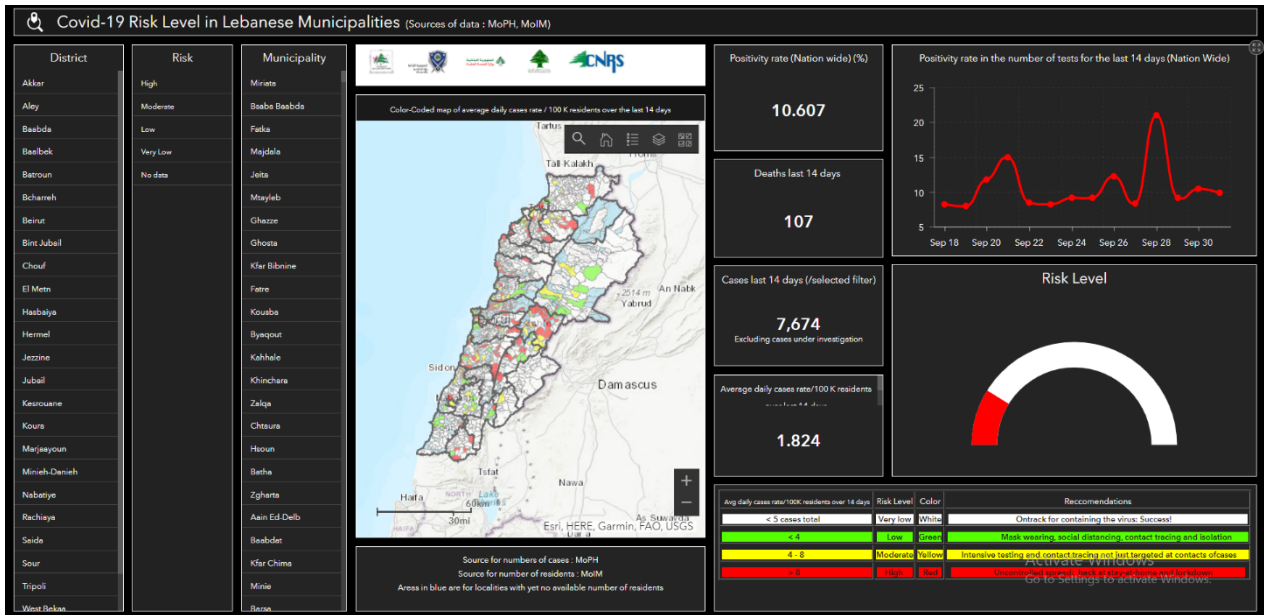
| Bint Jbeil | 16 |
|------------------|-----------|
| Jmeijmeh | 1 |
| Shaqra | 1 |
| Kherbet Silim | 4 |
| Harees | 1 |
| Kafra | 2 |
| Qalawayh | 2 |
| Yater | 2 |
| Others | 3 |
| Marjeyoun | 6 |
| Marjeyoun | 1 |
| Taybeh | 1 |
| Markaba | 3 |
| Mays Al Jabal | 1 |
| Hasbaya | 1 |
| Hasbaya | 1 |
| Baalbek | 11 |
| Baalbek | 1 |
| Sharawneh | 1 |
| Hoch Al Rafqa | 1 |
| Temnine El Tahta | 2 |
| Tarayya | 2 |
| Sereen Al Tahta | 1 |
| Talya | 1 |
| Others | 2 |

| Koura | 7 |
|----------------------|-----------|
| Amyoun | 2 |
| Deddeh | 1 |
| Dahr Al Ein | 2 |
| Others | 2 |
| Zghorta | 10 |
| Zghorta | 4 |
| Erdeh | 1 |
| Haret Al Jdeedeh | 2 |
| Meryata | 2 |
| Others | 1 |
| Batroun | 6 |
| Batroun | 2 |
| Hery | 1 |
| Kfeifan | 1 |
| Eddeh | 1 |
| Ras Nhash | 1 |
| Akkar | 6 |
| Nahr Al Bared | 2 |
| Rahbe | 1 |
| Others | 3 |
| Bcharre | |
| Menye Dunyyeh | 2 |
| Bhannin | 1 |
| Sfeereh | 1 |

| Tyre | 78 |
|----------------------|----------|
| Tyre | 17 |
| Bass | 2 |
| Borj Al Chemaly | 15 |
| Qanoun Al Ein | 1 |
| Sma'ieh | 1 |
| Jouayya | 5 |
| Yanouh | 2 |
| Baflieh | 1 |
| Barish | 1 |
| Qana | 2 |
| Maaroub | 3 |
| Saddiqeen | 6 |
| Ein Baal | 1 |
| Bazourieh | 1 |
| Chehabiyeeh | 5 |
| Qanoun Al Nahr | 2 |
| Bedyas | 2 |
| Abbasieh | 3 |
| Malkiyat Al Sahel | 1 |
| Majdel Zoun | 1 |
| Others | 6 |
| Western Beqaa | 3 |
| Mashghara | 1 |
| Marej | 2 |

| | |
|---------------|------------|
| Others | 112 |
|---------------|------------|

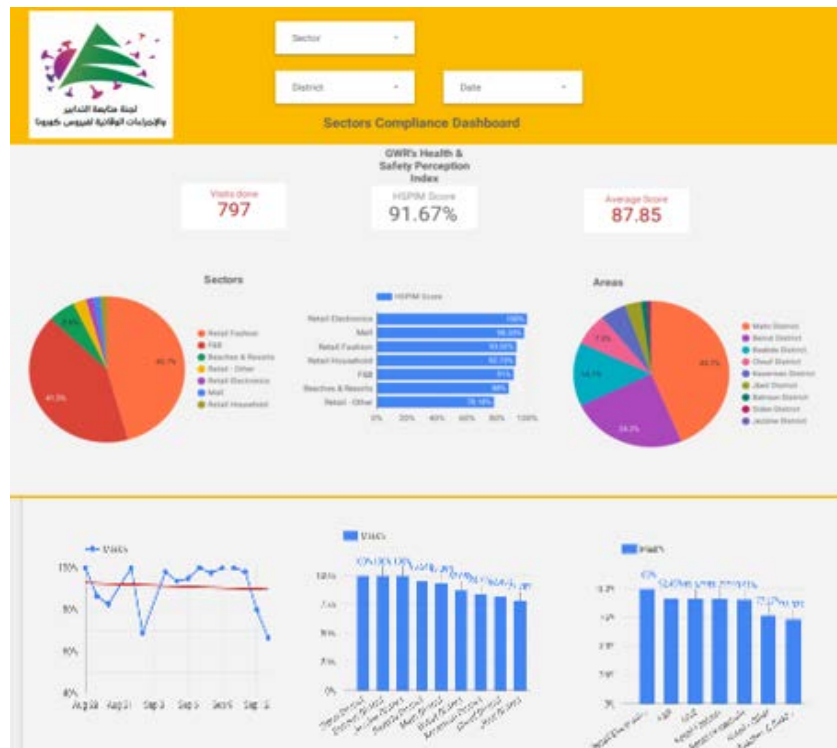
The Online platform to measure the level of risk of the spread of the new Corona virus



This interactive platform allows you to know the level of risk of spreading the kurna virus according to districts, based on the number of cases registered daily and the number of residents in each district. For more information on a daily basis, you can access the following link:

<https://bit.ly/DRM-RiskLevelInMunicipalities>

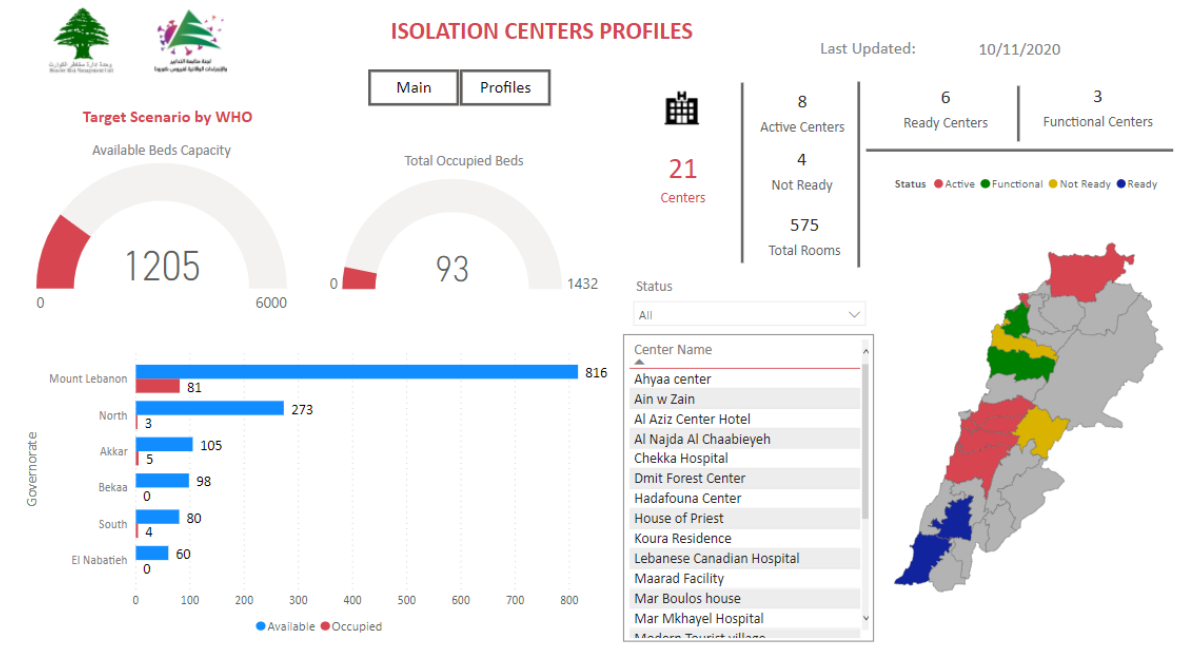
Online platform to track sector commitment in general mobilization procedures



Based on the recommendation issued by the National Committee for Follow-up of Preventive Measures and Measures to Confront the Coronavirus to open all sectors, provided that the general mobilization procedure (safe distance, muzzle, and hand sterilization) be applied, a special electronic platform was created that allows monitoring and measuring the percentage of commitment by various sectors on an ongoing basis. The detailed results can be viewed directly at the following link:

<http://bit.ly/covidsectordata>

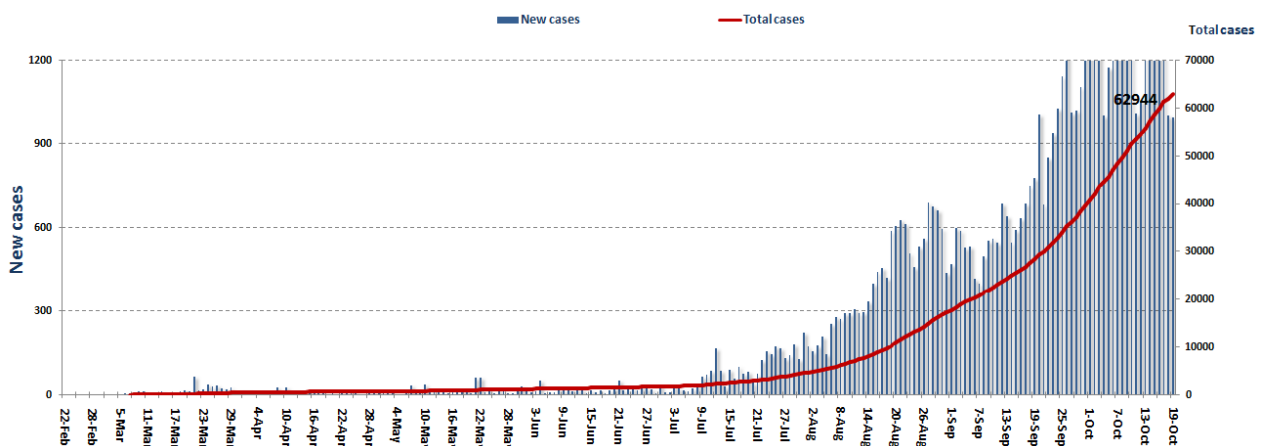
Occupancy rate of isolation centers for cases infected with Coronavirus



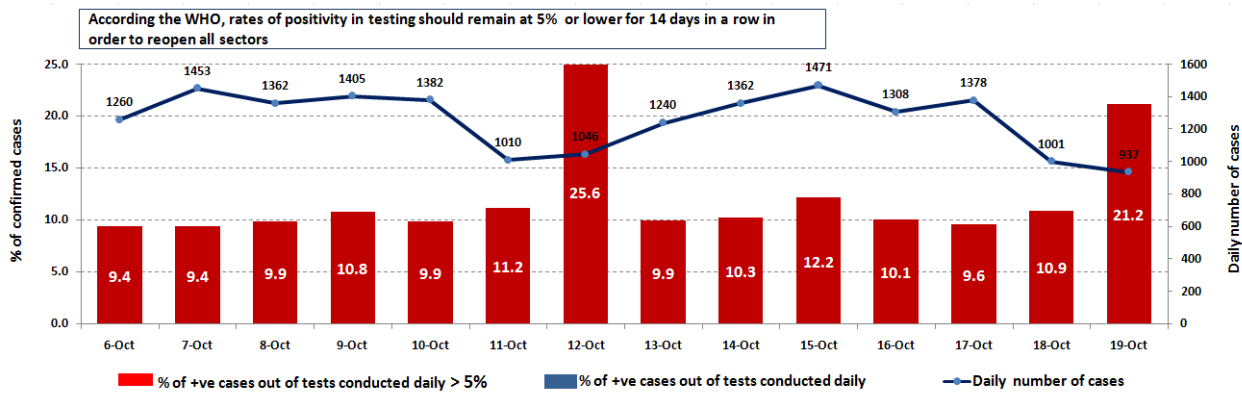
For more information about the isolation centers' distribution and the percentage of their occupancy, enter the following link: <http://bit.ly/DRM-IsolationCentersProfiles>

Note: These centers have been equipped in cooperation between the National Committee for Follow-up of Preventive Measures and Measures to Confront the Coronavirus and Governors and Municipalities, the United Nations Development Program, the World Health Organization, UNICEF, the Ministry of Public Health, the Syndicate of Nurses in Lebanon and the Syndicate of Specialists in Social Work.

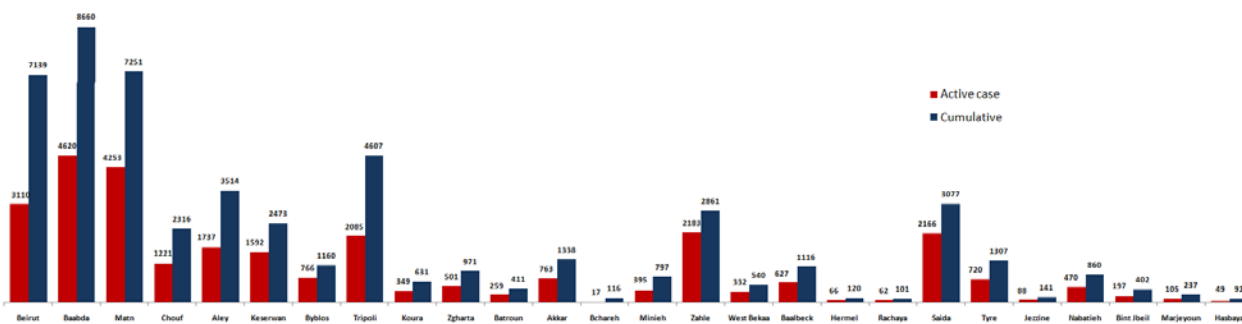
Cases per day



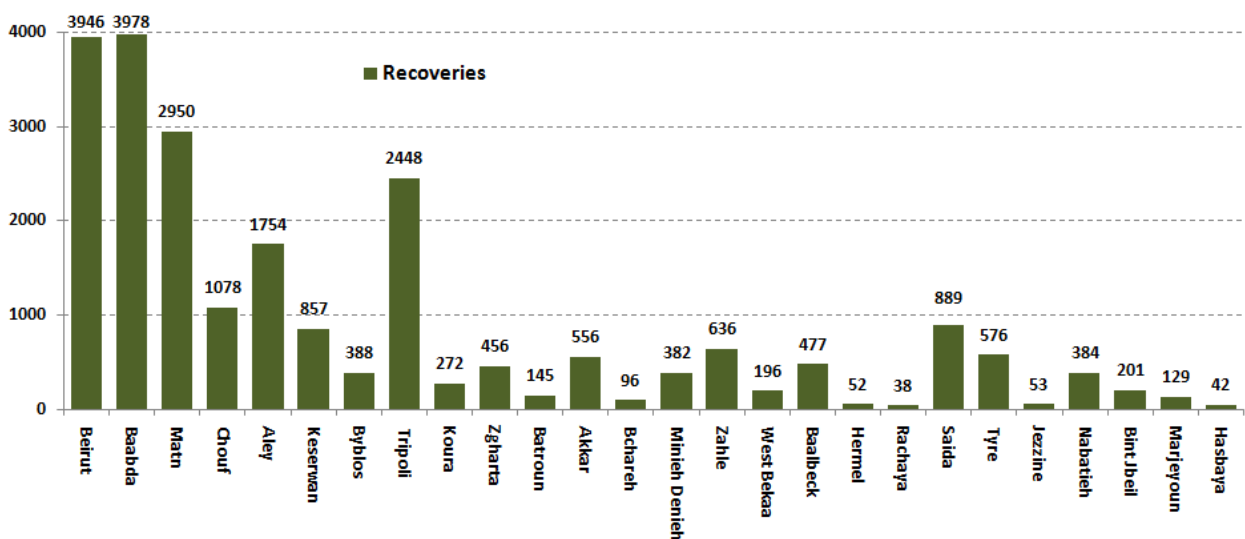
The percentage of positive cases out of the number of daily checks (6-19 October 2020)



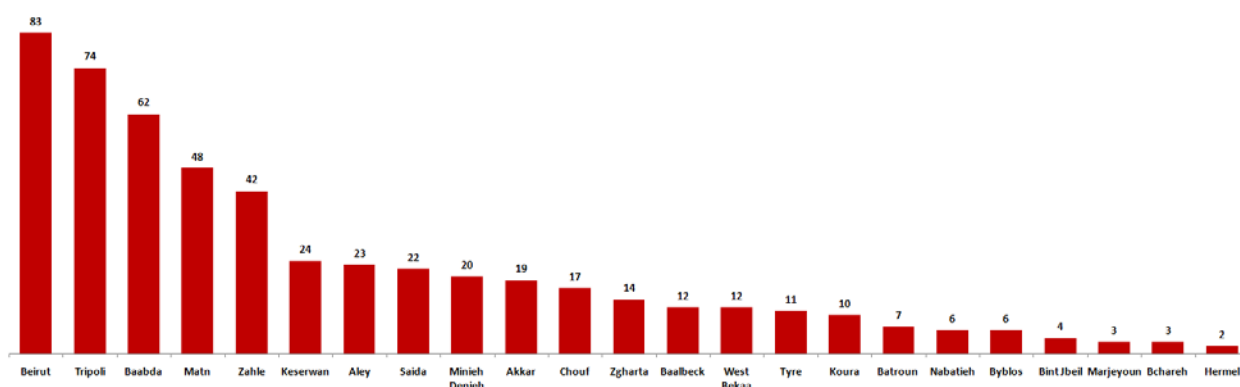
Distribution of Active Cases by Districts



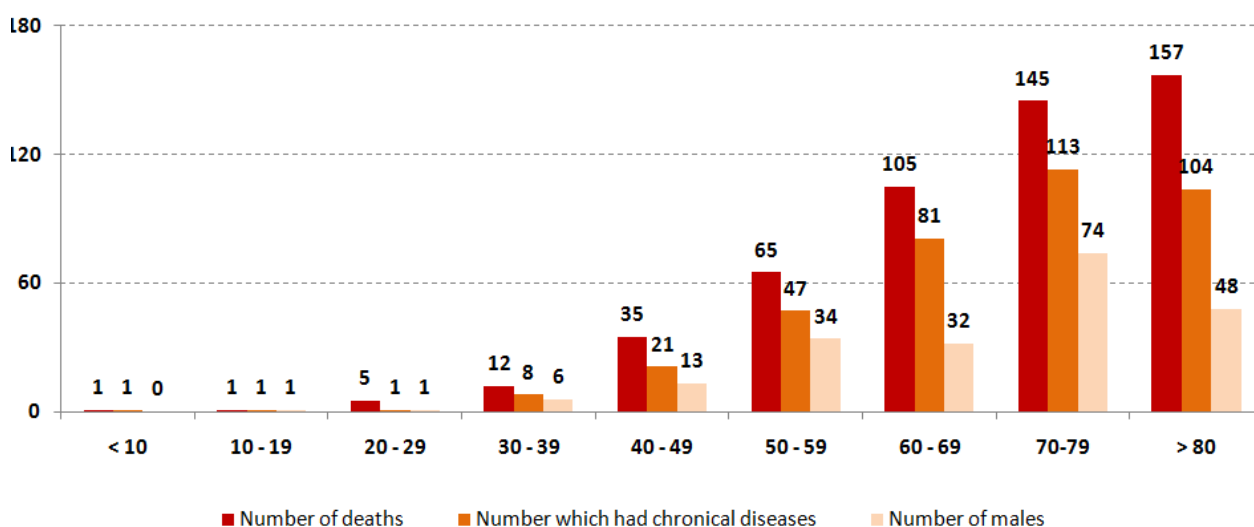
Recoveries



Distribution of deaths by Governorates



Distribution of deaths by Age

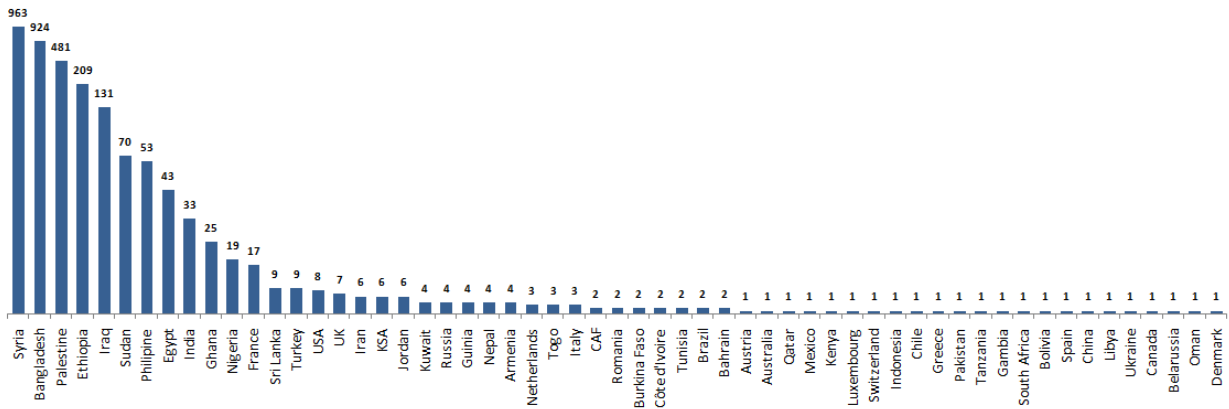


The distribution of the recorded deaths during the past 24 hours

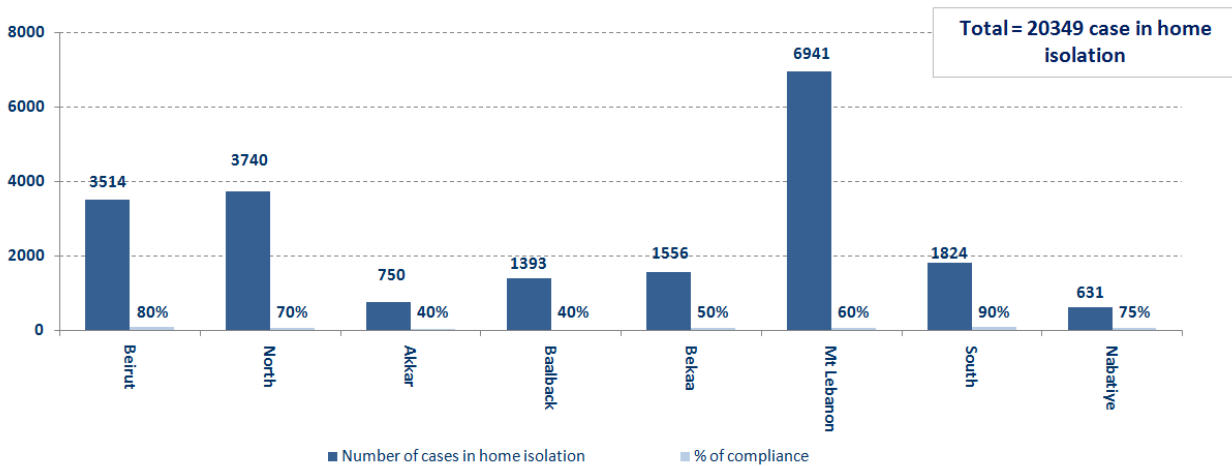
| Hospital | Residence | Gender | Age | Chronic |
|---------------------|-----------|--------|-----|---------|
| Baabda Gov | Kesrwen | Male | 90 | Yes |
| Al Mazloum | Batroun | Male | 65 | - |
| Saint George-Hadath | Aleyh | Female | 72 | Yes |
| Ftough Kesrwen Gov | Jbeil | Male | 86 | No |
| Saint George-Hadath | Aleyh | Male | 75 | Yes |
| Haykal Hospital | Tripoli | Male | 76 | Yes |

Distribution of cases by nationality

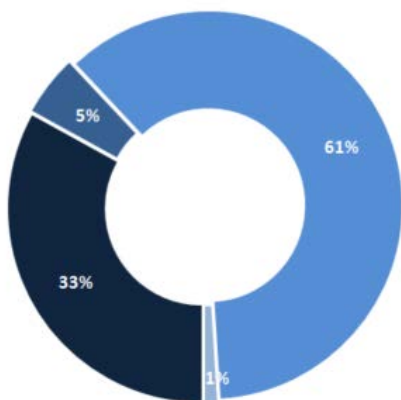
Lebanese : 59417 cases out of 62944 (88%)



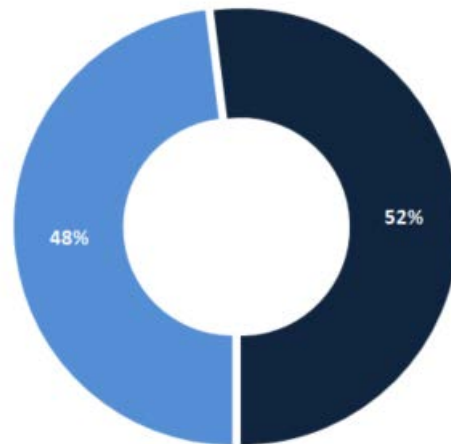
Number of individuals in home isolation and percentage of commitment to isolation



Exposure



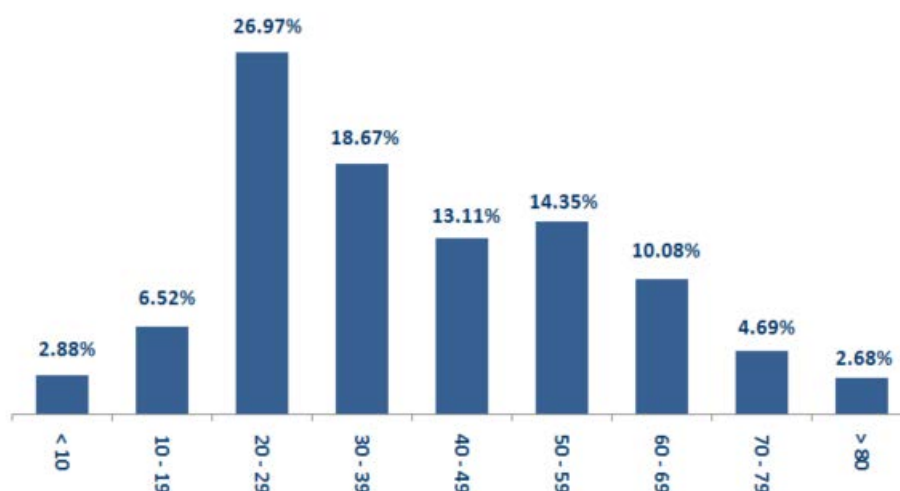
Distribution according to gender



■ Contact with confirmed case ■ Travel related ■ Under investigation ■ Unidentified source

■ Female ■ Male

Distribution by age



Decisions and actions taken – 10/19/2020

Ministry of Public Health

- The Ministry of Public Health stated that every hospital that provides an intensive care room for people with Coronavirus will benefit from respirators that the Ministry works to secure for hospitals. Within the framework of implementing its strategy to confront the second phase of the outbreak, the Ministry is intensifying campaigns to conduct PCR examinations in various Lebanese regions, especially in villages and towns that are recording increasing numbers of infections, and is closely following the measures that municipalities are implementing in order to limit the spread of the virus locally.

- The Ministry of Public Health reported that PCR tests had been completed for flights that arrived in Beirut and were conducted at the airport on 10/15/2020 in addition to the first batch of flight checks that arrived in Beirut on 10/16/2020, and the results showed that there were fifty-seven (57) positive cases that were distributed on the following flights:

| Arriving from | Company | Flight Number | Number of Positive Cases |
|---------------|------------------|---------------|--------------------------|
| 10/15/2020 | | | |
| Irbel | MEA | 325 | 2 |
| Cairo | MEA | 711 | 2 |
| Al Basra | MEA | 333 | 5 |
| Adana | PEGASUS | 6700 | 2 |
| Istanbul | Turkish Airlines | 826 | 1 |
| Al Najaf | MEA | 327 | 4 |
| 10/16/2020 | | | |
| Istanbul | PEGASUS | 756 | 1 |
| Istanbul | Turkish Airlines | 828 | 4 |
| Dubai | Emirates | 957 | 1 |
| Baghdad | Iraqi Airways | 131 | 17 |
| Istanbul | MEA | 266 | 8 |
| Cairo | MEA | 307 | 1 |
| Istanbul | MEA | 268 | 4 |
| Istanbul | Turkish Airlines | 826 | 5 |
| Total | | | 57 |

Lebanese Red Cross

| | | | | | | | |
|---------------|---|---------|---|-----------|--|------------------|---|
| 235,498 | Number of PCR tests transferred to laboratories | 50,845 | Number of additional ambulance centers ready to respond | 48 | ambulance centers | 6,609 (46 New) | cases transferred to hospitals |
| 166 | Number of volunteers trained to transfer PCR tests | 1,498 | Number of trained paramedics | 8,760 | total number of respondents | 86,750 (280 New) | number of those benefiting from awareness *sessions |
| 967 | The number of university volunteers trained to follow up on prevention measures in companies and institutions | 291 | Number of university volunteers trained to conduct awareness sessions | 550 | total LRC volunteers for covid19 | 8,646 | number of trained managers for isolation centers |
| 4,295 (2 New) | Number of beneficiaries from educational electronic platforms COVID-19 | 128,772 | Number of distributed equipment | 1,242,780 | total distributed posters, brochures, and flyers on covid19 prevention | 651 (8 New) | number of prisons that have been disinfected |

General Directorate of Internal Security Forces

| The number of seizure records during the past 24 hours | | | | | The total number of records since 03/08/2020 | | |
|---|-----------|-------|-------|-------|--|--------------|---------------|
| Written records of violating institutions (absorptive capacity and preventive measures) | | | | | 4 | | |
| Written records of persons violating the decision to wear a mask | | | | | 0 | Beirut | 21,097 |
| Written records of people violating the general mobilization decision (Aragil* and social distancing) | | | | | 309 | Mount Leb | 20,070 |
| Total | | | | | 313 | Beqaa | 8,598 |
| | | | | | | North | 7,463 |
| Beirut | Mount Leb | Beqaa | North | South | | South | 7,606 |
| 53 | 127 | 70 | 15 | 48 | | Total | 64,834 |

General Directorate of State Security

- The report of the closure of the official Hasbaya High School for a period of 14 days after a teacher was infected with the Corona virus, based on the decision of the Mayor of Hasbaya in coordination with the municipality, the school, the judge's doctor and the director of secondary education, from 10/19/2020 until 1/11/2020.

-Reporting the total number of infected cases to the General Directorate of State Security, which reached 70 cases.

- Notification of the percentage of compliance with the general mobilization decision in the governorates, which came as follows within the past 24 hours:

| Beirut | South | North | Akkar | Beqaa | Nabateih | Baalbek Hermel | Mount Leb |
|--------|-------|-------|-------|-------|----------|----------------|-----------|
| 50% | 55% | 40% | 40% | 50% | 60% | 10% | 45% |

General Directorate of General Security

The report of two deaths in the towns of Achkout and Jbeil, with the Coronavirus.

- Reporting the commitment of the municipalities to the decision of the Minister of Interior and Municipalities:

| Municipalities that abided by the decision | Municipalities didn't abide by the decision |
|--|--|
| Anqat, Al-Majdal, Al-Qobayat, Al-Aboudieh, Chakra, Yatar, Arabsalim, Mims, Kfar Zabad, Hosh Halan, Ferzol, Niha, Qaa Al-Reem, Saadnayel, Taalabaya, Ablah, Bar Elias, Chtoura, Barej, Rayak, Dalhamiya, Terbol, Khirbat Kanfar | Katarmaya, Mazboud, Shehim, Barja, Jadra, Jiyeh, Damour, Naameh, Haret Al Naameh, Kfar Rahim, Deir El Qamar, Btloun, Batma, Niha, and Al Warhaniya |

- Follow up the implementation of the required security and preventive measures at the airport, ports and border crossings.
- Reporting cases registered in the various districts and cases in home quarantine.

Ministry of Public Works and Transportation

| Departing Flights | | Arriving Flights | |
|---------------------------------|-------|--------------------|-------|
| Number of Flights | 35 | Number of Flights | 33 |
| Number of Departing Individuals | 4,072 | Number of Arrivals | 3,430 |

| Port | Entered | | | Left | | |
|--------------|------------|-----------|----------|------------|-------------|----------|
| | Import | Direction | # | Export | Direction | # |
| Beirut | Containers | Russia | 1 | Containers | Alexandaria | 1 |
| | Cattles | Alexandrn | 1 | | | |
| Chekka | Metals | Turkey | 1 | | | |
| Jbeil | Diesel | Turkey | 1 | | | |
| Saida | | | | Blank | Cairo | 1 |
| Tripoli | Chemicals | Malta | 1 | | | |
| Total | | | 5 | | | 2 |

General announcements

- The Minister of Interior and Municipalities issued Decision **No. 1258 on 10/18/2020** regarding the continued closure of some villages and towns due to the high number of corona infections in them, based on the recommendations of the small committee affiliated to the Committee for Follow-up of Preventive Measures and Procedures for Coronavirus. The main highlights of the decision:

- The closure of the towns listed in the decision starting from 6:00 a.m. on Monday 10/19/2020 until 6:00 a.m. on Monday, 10/26/2020, provided that work stops in all official and private administrations and institutions within those villages and cancellation All social events, parties, parties and gatherings of all kinds, and coordination with the clergy to close the places of worship, and this decision specified the sectors excluded from the closure decision.
- Keeping work at the time of preventing exit and entering the streets and roads between the first hour of midnight until six in the morning.
- Determining the number of people traveling by public and private transport (3 people in public cars, 4 people in private cars, half the carrying capacity of common transport vehicles and buses). • A complete closure until further notice, and without any exceptions, for all bars, cabarets and nightclubs all over the Lebanese territories, under penalty of referring the violators to the competent court.
- The commitment of citizens in all regions to wear a mask, maintain safe distances, and avoid overcrowding when forced to move.
- The decision to open or close educational institutions and administrative units of the Ministry of Education and Higher Education in unlocked towns and villages is limited to the Minister of Education and Higher Education.
- Assigning governors to determine the municipal zone in the major towns included in the decision and overlapping with other towns, taking appropriate measures to implement the content of the decision and requesting the support of the security forces when necessary, stressing citizens in villages and towns that will be closed with the necessity to remain in homes and not to walk around and to wear a muzzle when Forced mobility, asking the district administrators to instruct the mayors to review the daily lists of positive cases that are sent to them via the IMPACT platform to check them and correct their data as soon as they are received, and to assign them to supervise this task in coordination with the Judicial Doctor and the Lebanese Red Cross.
- Assigning the General Directorate of Internal Security to strictly enforce this decision and suppress violations and organize seizure records against violators

Note: The decisions can be found at www.drm.pcm.gov.lb

Examples of lack of adherence to safety measures

Failure of some municipalities to abide by the Ministry of Interior and Municipalities Decision No. 1025/2020 related to the closure of towns that have a high risk of the spread of the epidemic.

- Demand gatherings and demonstrations.
- Failure to comply with the preventive measures and procedures required in several stores and markets (putting on a muzzle or face mask, sterilizing hands, maintaining a safe distance).
- Non-compliance with the 50% occupancy rate in several restaurants and amusement game centers.
- Gatherings for social events.
- Failure of those in contact with confirmed cases to adhere to home isolation procedures until the results of the laboratory tests are issued.

If you feel any symptoms, call directly the hotline of the Ministry of Public Health: 1214 or 01/594459

A list of the laboratories accredited by the MoPH to conduct PCR tests

المختبرات الحكومية المؤهلة لإجراء التشخيص المخبري لفيروس كورونا بطريقة الـ RT-PCR

| المختبر | الموقع |
|---------------------------------------|----------|
| مستشفى رفيق الحريري الجامعي RHUH | بيروت |
| مستشفى حيا الحكومي | حيا |
| مستشفى طرابلس الحكومي | طرابلس |
| مستشفى البترون الحكومي | البترون |
| مستشفى فتوح كسروان الحكومي (البوار) | كسروان |
| مستشفى نبيه بزي الحكومي الجامعي | النبطية |
| مستشفى نينين الحكومي | نينين |
| مستشفى بنت جبيل الحكومي | بنت جبيل |
| مستشفى بعطيك الحكومي | بعطيك |
| مستشفى الرئيس الياقوت الهراوي الحكومي | زحلة |

مختبرات المستشفيات العسكرية

| | |
|---|-------|
| المستشفى العسكري المركزي في بيروت Hôpital Militaire Central | بيروت |
|---|-------|

المختبرات المؤهلة لأخذ عينات "المسحات الأنفية" بطريقة Drive- thru

| | |
|---|----------|
| مختبر ميديكال دياغنوستيك تريمانت سنتر (الحمراء) Medical Diagnostic Treatment Center (MDTC) | بيروت |
| مختبر ميد لاب MedLab SAL CIC ALS (الحمراء - الجفيلور) | بيروت |
| مختبرات عيتاني Itani Medical Laboratories (المزرعة) | بيروت |
| مختبر أ ب سي ABC Laboratories | الأشرفية |
| مختبرات معوض الطبية Mouawad Medical Laboratory | الشيح |
| مختبرات الشياح (د. فؤاد ربحان) Rihan Medical Center | الشيح |
| مختبر إكسبيرت لاب Expert Lab | المنصورة |
| مختبر لايف لاب Life LAB | بعطيك |
| مستشفى الرياق Riyak Hospital | رياق |

المختبرات الخاصة المؤهلة لإجراء التشخيص المخبري لفيروس كورونا بطريقة الـ RT-PCR

| المختبر | الموقع |
|--|------------|
| AUBMC مستشفى الجامعة الأميركية | بيروت |
| Hotel-Dieu de France (HDF) مستشفى أوتيل ديو الجامعي | بيروت |
| مختبرات رودولف ميريو (الجامعة اليسوعية - المتحف) Laboratoire Rodolphe Mérieux (Université Saint-Joseph) | بيروت |
| Saint-George Hospital - UMC مستشفى القديس جاورجيوس الجامعي | بيروت |
| Makassed General Hospital مستشفى المقاصد | بيروت |
| LAU Medical Center - Rizk Hospital مستشفى رزق الجامعي | بيروت |
| Hôpital Libanais Geitawi - CHU مستشفى اللبناني الجعيتاوي الجامعي | بيروت |
| Hôpital Notre-Dame du Rosaire مستشفى الوردية | بيروت |
| Doctor 's Center مختبر مركز الأطباء | بيروت |
| Fontana Laboratories مختبر فونتانا (الحمرا) | بيروت |
| مختبر الأمن العام (العدلية) | بيروت |
| Laboratoire Jabre-Ghorra مختبرات جبر وغرة | بيروت |
| Saint Marc Medical & Diagnostic Center مختبر السان مارك | بيروت |
| Laboratoire Moderne (Modern Lab- Berjaoui) المختبرات الحديثة | لغبري |
| Sahel General Hospital (SGH) مستشفى الساحل | لغبري |
| مستشفى الزهراء الجامعي | لغبري |
| Al Zahraa Hospital - UMC مستشفى الرسول الأعظم | برج الراجة |
| مستشفى بهمن | |
| Al Rassoul Al Aazam Hospital Bahman Hospital | حارة حريك |
| مختبر ناتيونال دياغنوستيك سرفيس كومباني National Diagnostic Services Company (NDSC) | حارة حريك |
| Medical Diagnostic Center مختبر الدكتور محمود عثمان - مركز التحليل الطبية | لبرجة |
| American Diagnostic Center (ADC) مختبر أميريكين دياغنوستيك سنتر | لجناح |
| Mount Lebanon Hospital مستشفى جبل لبنان | بعنا |
| Hôpital Saint-George – Hadath مستشفى السان جورج الحدث | بعنا |
| Al Hadi Laboratory مختبر الهادي | بعنا |
| INOVIE-Liban مختبر | بعنا |

| | |
|---|----------|
| Hôpital du Sacré- Coeur مستشفى قلب يسوع | الحازمية |
| Clinigene مختبر كلينيجان | الحازمية |
| Hôpital Dr.Samir Serhal مستشفى سرحال | المتن |
| Transmedical for Life مختبر ترانسيميديكال فور ليف | المتن |
| Haroun Hospital مستشفى هارون | الزلقا |
| Bellevue Medical Center (BMC) مستشفى بلفو | المنصورة |
| Hôpital Albert Haykal مستشفى هيكل | الكورة |
| Centre Hospitalier du Nord (CHN) مركز الشمال الإستشفائي | زغرنا |
| Mazloum Hospital مستشفى المظلوم | طرابلس |
| Al Mounla Hospital مستشفى الملا | طرابلس |
| Nini Hospital مستشفى النيني | طرابلس |
| مختبر ميكروبيولوجيا الصحة والبيئة LMSE - المعهد العالي للدكتوراه، الجامعة اللبنانية | طرابلس |
| CHU - Notre-Dame des Secours مستشفى سيدة المعونات الجامعي | جبل |
| Lab Akiki & Boulos مختبر عقيقي وبولس | جبل |
| Centre Médical Wakim مختبر واكيم | جونية |
| Ain Wazein Hospital مستشفى عين وزين | الشوف |
| Hammoud Hospital UMC مستشفى حمود الجامعي | سيدا |
| Al Karim Medical Laboratory (KML) مختبر الكريم | سيدا |
| Sheikh Ragheb Harb Hospital مستشفى الشيخ راجب حرب | البيشة |
| Sabbah Diagnostic Center (SDC) مختبر الصباح | البيشة |
| Jabal Amel Hospital مستشفى جبل عامل | صور |
| Mashrek Diagnostic Center (MDC) مختبر المشرق | صور |
| Dar Al Amal University Hospital مستشفى دار الأمل الجامعي | بعلبك |
| Khoury General Hospital مستشفى خوري | زحلة |
| Medical Care Center (MCC) مختبر ميديكال كير سنتر | زحلة |