



Lebanon National Operations Room Daily Report on COVID-19

Sunday, October 18, 2020

Report #214

Time Published: 10:30 PM

New in the report:

- Ministry of Interior and Municipalities Decision No. 1258 of 10/18/2020 related to the continued closure of some villages and towns due to the high number of Coronavirus cases in them.

1,002 New Cases	
1,001 Residents	1 Expats

61,949 Total Cases since 21.2.2020	
59,992 Residents	1,930 Expats

520 Total Deaths	
3 New Deaths	

27,962 Total Recovered	
765 New Recovered	

337 Deleted status due to its recurrence
--

1,272 Total Cases in the Health Sector
4 New Cases in the Health Sector

33,467 Total Active Cases
32,835 Cases in Home Isolation

632 Hospitalized Cases
423 Mild Cases

209 Total Cases in ICU
3 New Cases in ICU

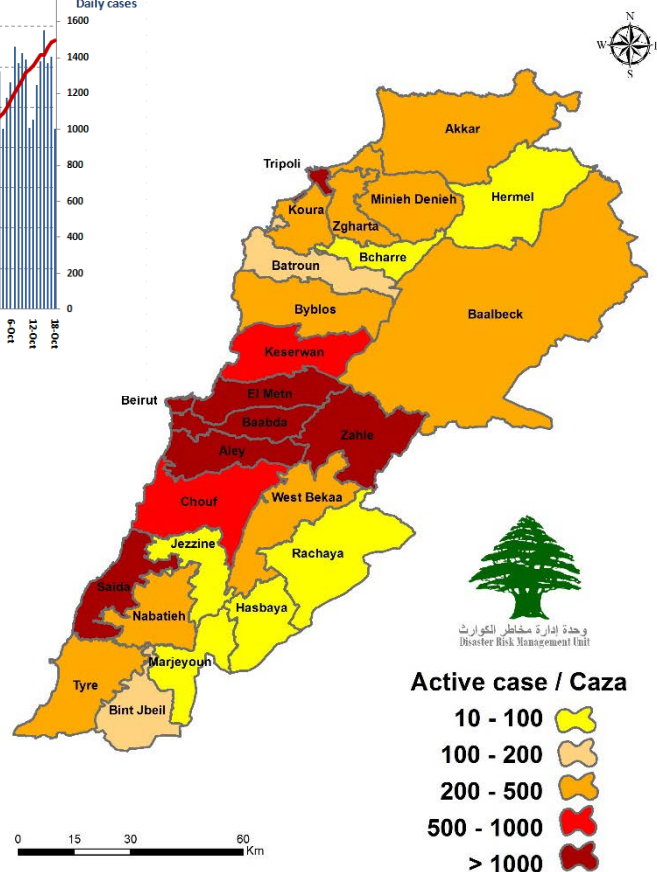
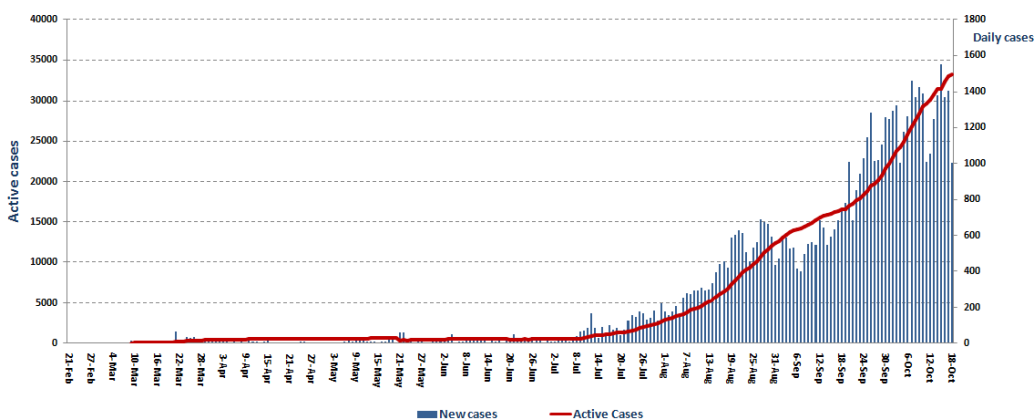
1,013,134 COVID-19 Tests since 21.2.2020	
1,053 COVID-19 Tests at Airport within 24 hrs.	9,157 COVID-19 tests for residents within 24 hrs.

Lebanon Status compared to the World		
Total Cumulative	61,949	40,189,343
Total Deaths	520	1,117,095
Deaths percentage	0,83%	2.77%
Total recoveries	27,962	30,039,696

Ref: Ministry of Public Health Data

Number of Cases by Location

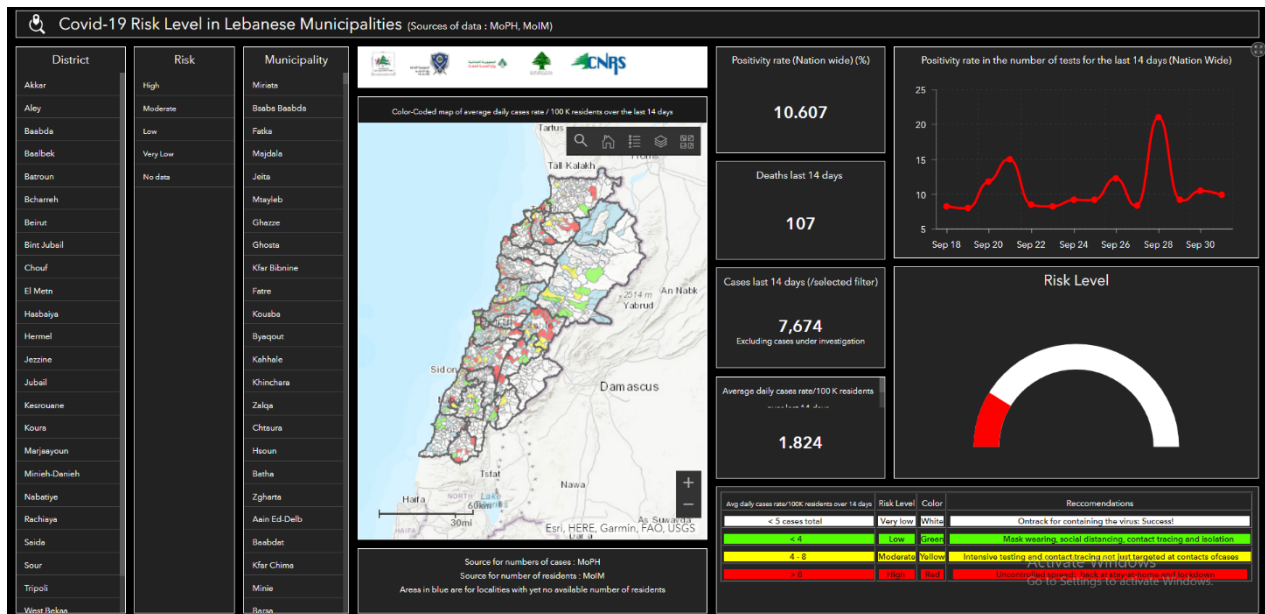
- 10,614 case is Under investigation



Active case / Caza

10 - 100	
100 - 200	
200 - 500	
500 - 1000	
> 1000	

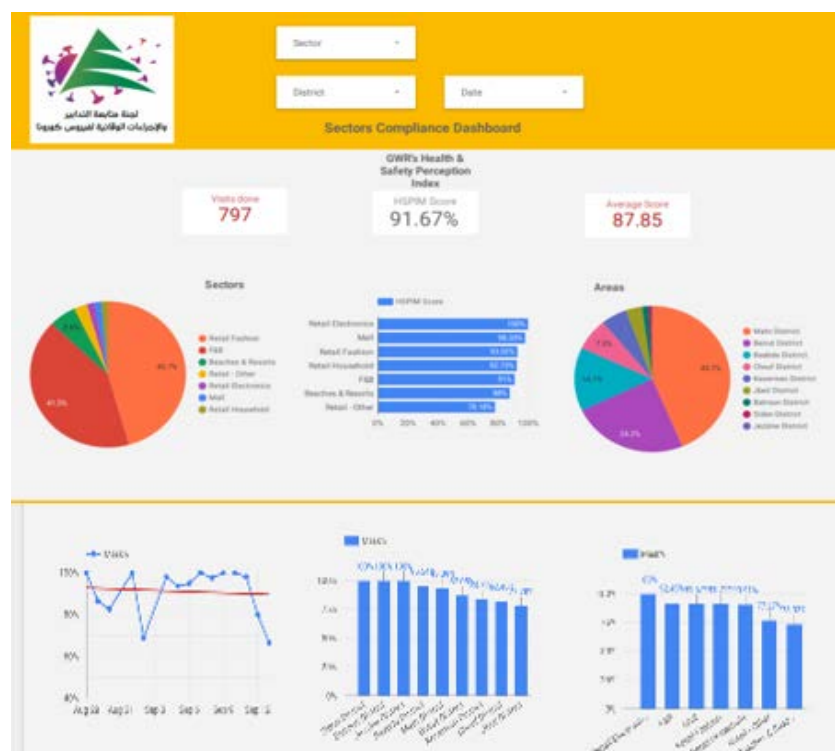
The Online platform to measure the level of risk of the spread of the new Corona virus



This interactive platform allows you to know the level of risk of spreading the kurna virus according to districts, based on the number of cases registered daily and the number of residents in each district. For more information on a daily basis, you can access the following link:

<https://bit.ly/DRM-RiskLevelInMunicipalities>

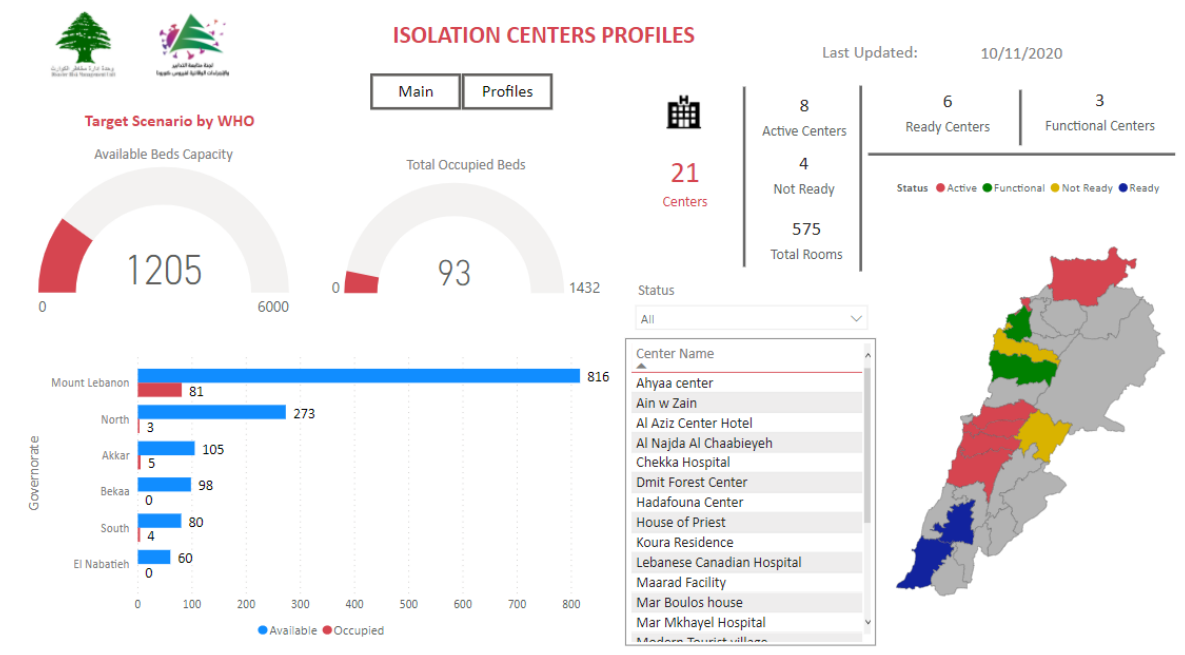
Online platform to track sector commitment in general mobilization procedures



Based on the recommendation issued by the National Committee for Follow-up of Preventive Measures and Measures to Confront the Coronavirus to open all sectors, provided that the general mobilization procedure (safe distance, muzzle, and hand sterilization) be applied, a special electronic platform was created that allows monitoring and measuring the percentage of commitment by various sectors on an ongoing basis. The detailed results can be viewed directly at the following link:

<http://bit.ly/covidsectordata>

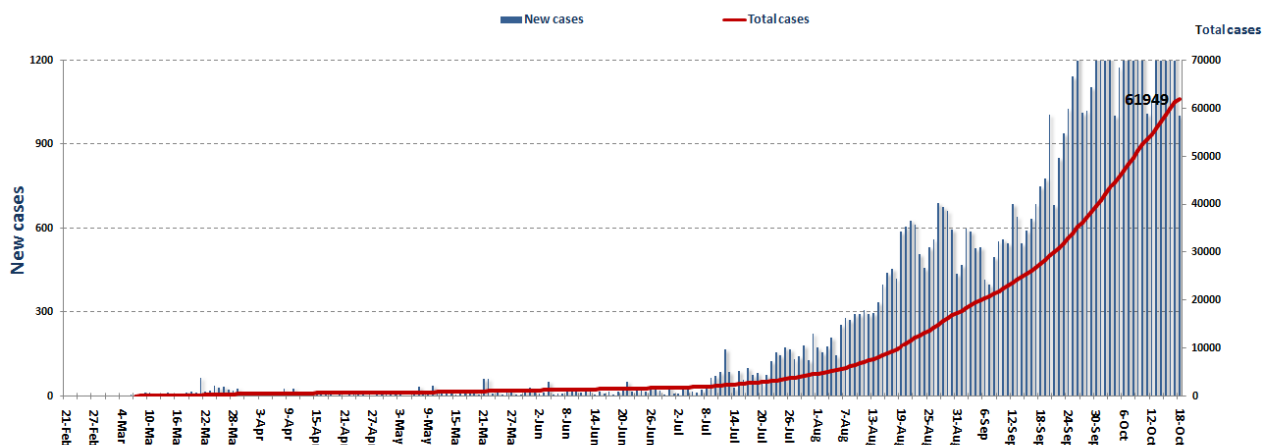
Occupancy rate of isolation centers for cases infected with Coronavirus



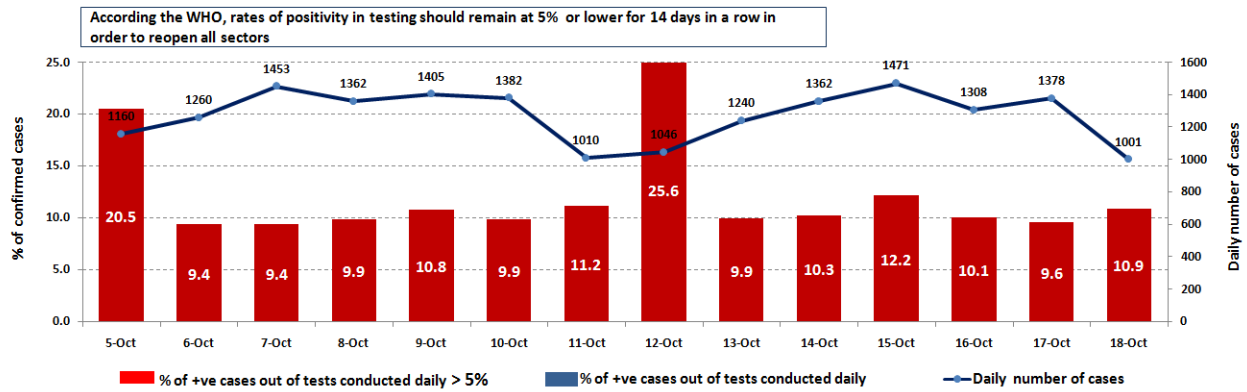
For more information about the isolation centers' distribution and the percentage of their occupancy, enter the following link: <http://bit.ly/DRM-IsolationCentersProfiles>

Note: These centers have been equipped in cooperation between the National Committee for Follow-up of Preventive Measures and Measures to Confront the Coronavirus and Governors and Municipalities, the United Nations Development Program, the World Health Organization, UNICEF, the Ministry of Public Health, the Syndicate of Nurses in Lebanon and the Syndicate of Specialists in Social Work.

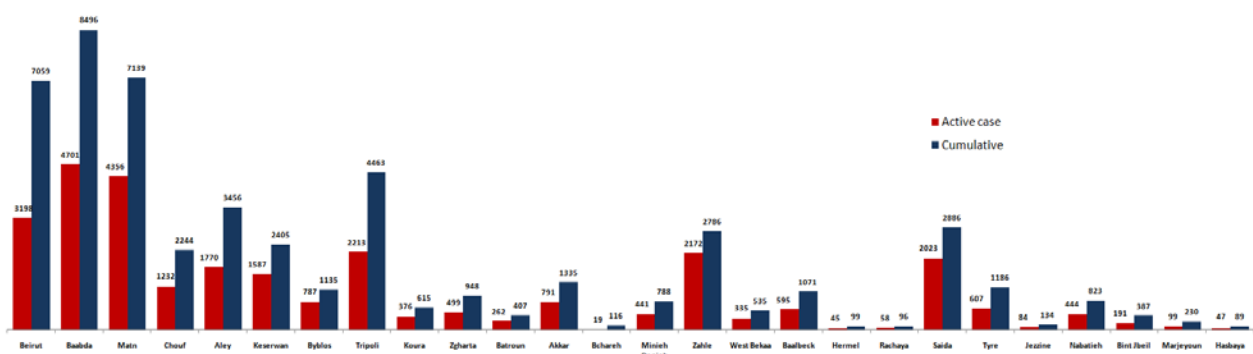
Cases per day



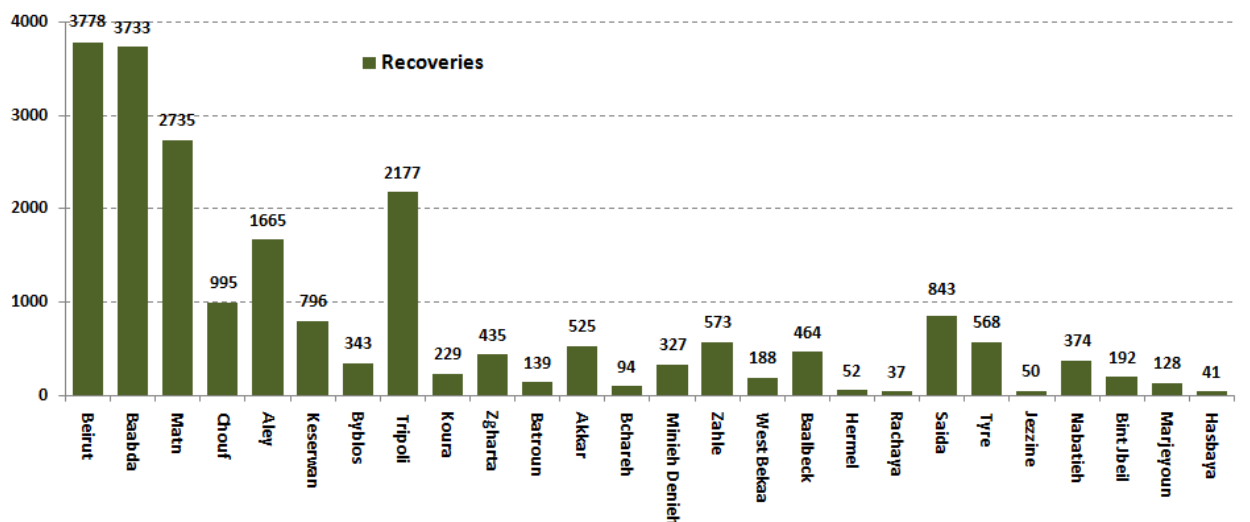
The percentage of positive cases out of the number of daily checks (5-18 October 2020)



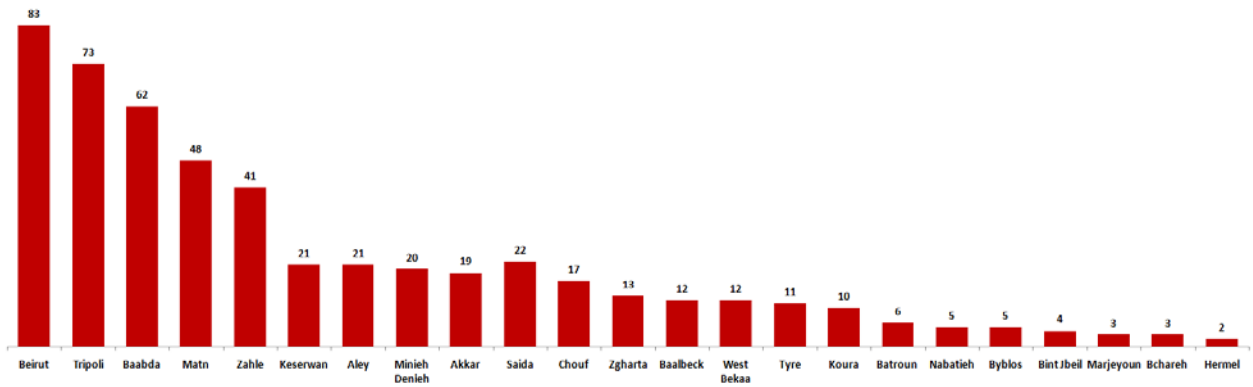
Distribution of Active Cases by Districts



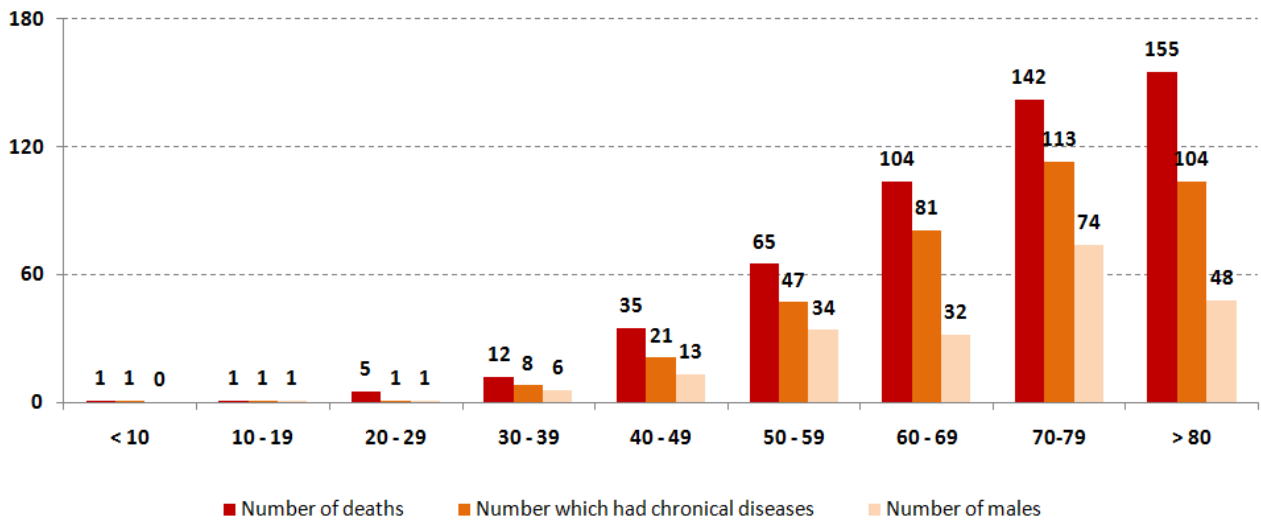
Recoveries



Distribution of deaths by Governorates



Distribution of deaths by Age

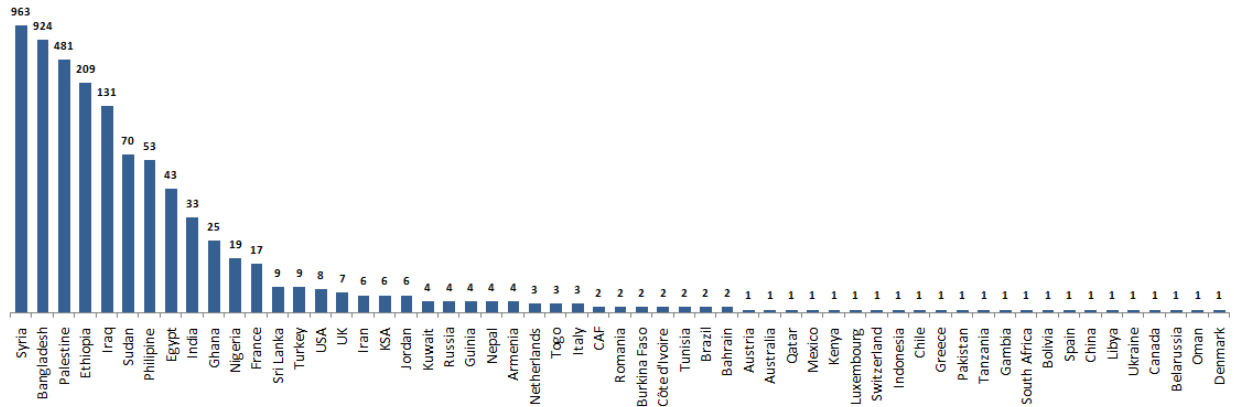


The distribution of the recorded deaths during the past 24 hours

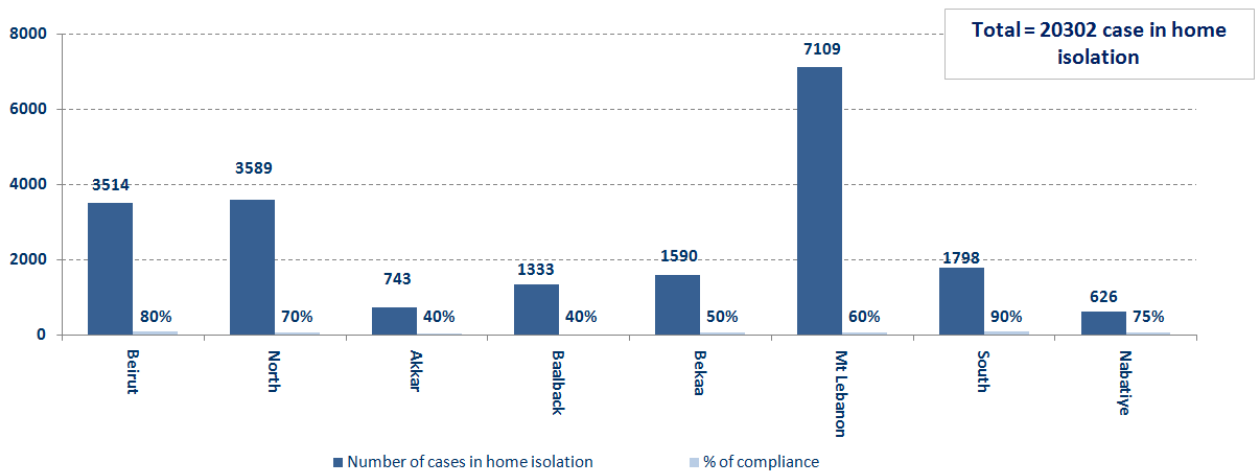
Hospital	Residence	Gender	Age	Chronic
Berri Gov	Nabateih	Male	55	Yes
Doctors With No Borders	Zahleh	Male	73	Yes
Notre Dame Hospital	Kesrwan	Male	59	Yes

Distribution of cases by nationality

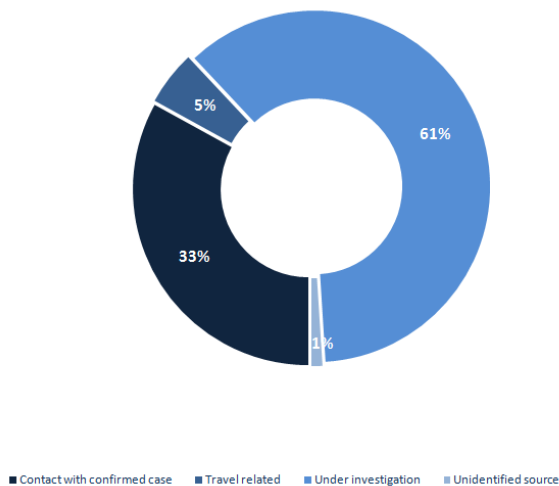
Lebanese : 54417 cases out of 61949 (88%)



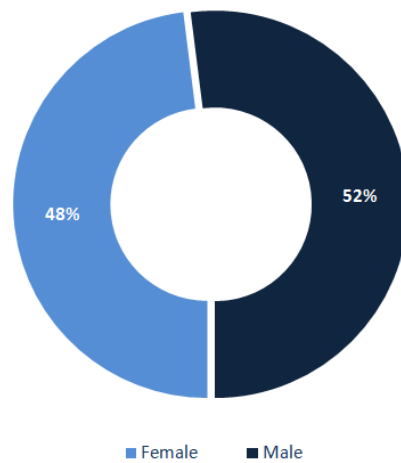
Number of individuals in home isolation and percentage of commitment to isolation



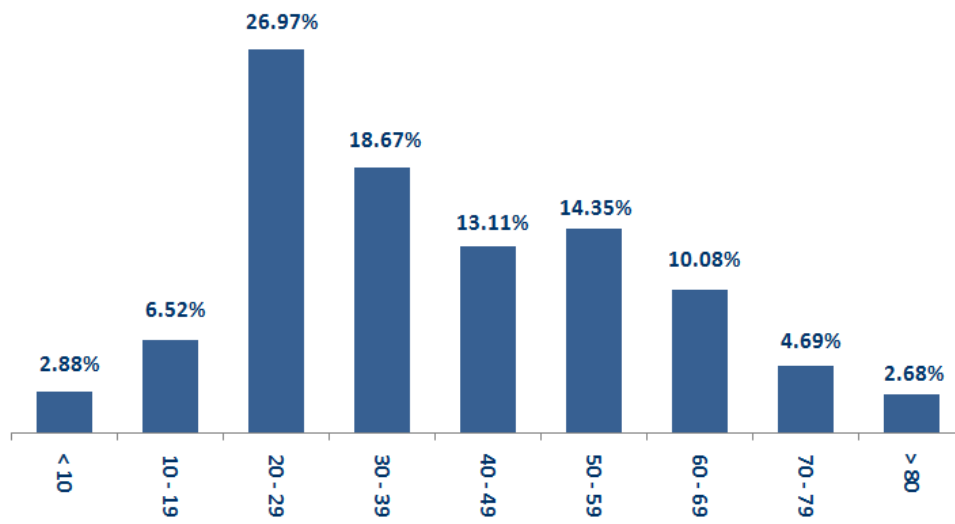
Exposure



Distribution according to gender



Distribution by age



Decisions and actions taken – 10/18/2020

Ministry of Public Health

Within the framework of implementing its strategy to increase the number of intensive care beds, the Ministry clarified that the percentage of those in need of intensive care in Lebanon ranged between five and six per thousand, but the danger is the limited number of intensive care beds, as the Ministry was able to add 61 beds in the last two weeks in government hospitals in various Lebanese regions.

Arriving from	Company	Flight Number	Number of Positive Cases
N/A			
Total			

Lebanese Red Cross

235,498	Number of PCR tests transferred to laboratories	50,845 (155 New)	Number of additional ambulance centers ready to respond	48	ambulance centers	6,563 (68 New)	cases transferred to hospitals
166	Number of volunteers trained to transfer PCR tests	1,498	Number of trained paramedics	8,760	total number of respondents	86,750 (280 New)	number of those benefiting from awareness *sessions
967	The number of university volunteers trained to follow up on prevention measures in companies and institutions	291	Number of university volunteers trained to conduct awareness sessions	550	total LRC volunteers for covid19	8,646	number of trained managers for isolation centers
4,293 (2 New)	Number of beneficiaries from educational electronic platforms COVID-19	128,772	Number of distributed equipment	1,242,780	total distributed posters, brochures, and flyers on covid19 prevention	643 (4 New)	number of prisons that have been disinfected

General Directorate of Internal Security Forces

The number of seizure records during the past 24 hours					The total number of records since 03/08/2020	
Written records of violating institutions (absorptive capacity and preventive measures)				5		
Written records of persons violating the decision to wear a mask				0	Beirut	21,044
Written records of people violating the general mobilization decision (Aragil* and social distancing)				239	Mount Leb	19,943
Total				244	Beqaa	8,528
					North	7,448
Beirut	Mount Leb	Beqaa	North	South	South	7,558
22	71	82	9	60	Total	64,521

General Directorate of State Security

- Reporting the decision of the municipality of Machghara in the western Bekaa district in the town's stone on 17 and 10/18/2020 due to the high number of infected cases in the town.

- Reporting the closure of Aley city based on the decision of the Governor of Mount Lebanon, who canceled all kinds of parties and closed all cafes, restaurants, express stores, shops, children's games centers, electronic games, public halls, sports clubs, shops and institutions except for ovens, dispensaries, centers for selling medical drugs, and warehouses for fuel and gas distribution.

- Notification of the percentage of compliance with the general mobilization decision in the governorates, which came as follows within the past 24 hours:

Beirut	South	North	Akkar	Beqaa	Nabateih	Baalbek Hermel	Mount Leb
50%	55%	40%	40%	40%	65%	N/A	40%

General Directorate of General Security

- Reporting 3 new injuries among members of the security forces: General Security (1), State Security (1), and Internal Security (1).

- 42 prisoners in Batroun Prison were reported infected with the Coronavirus.

- Reporting the closure of Al-Ma'shouk district in Tire district and its isolation for a period of five days from 10/18/2020 to 10/23/2020 due to the spread of the virus there.

- Reporting the commitment of the municipalities to the decision of the Minister of Interior and Municipalities:

Municipalities that abided by the decision	Municipalities didn't abide by the decision
Anqat, Al-Majdal, Al-Qobayat, Al-Aboudieh, Chakra, Yatar, Arabsalim, Mims, Kfar Zabad, Hosh Halan, Ferzol, Niha, Qaa Al-Reem, Saadnayel, Taalabaya, Ablah, Bar Elias, Chtoura, Barej, Rayak, Dalhamiya, Terbol, Khirbat Kanfar	Katarmaya, Mazboud, Shehim, Barja, Jadra, Jiyeh, Damour, Naameh, Haret Al Naameh, Kfar Rahim, Deir El Qamar, Btloun, Batma, Niha, and Al Warhaniya

- Follow up the implementation of the required security and preventive measures at the airport, ports and border crossings.
 - Reporting cases registered in the various districts and cases in home quarantine.

Ministry of Public Works and Transportation

Departing Flights		Arriving Flights	
Number of Flights	40	Number of Flights	37
Number of Departing Individuals	4,433	Number of Arrivals	3,890

Port	Entered			Left		
	Import	Direction	#	Export	Direction	#
Beirut	Containers	Antalya	1	Blank	Tripoli	1
Tripoli	Diesel	Greece	1	Diesel	Egypt	1
Total			2			2

General announcements

- The Minister of Interior and Municipalities issued Decision **No. 1258 on 10/18/2020** regarding the continued closure of some villages and towns due to the high number of corona infections in them, based on the recommendations of the small committee affiliated to the Committee for Follow-up of Preventive Measures and Procedures for Coronavirus. The main highlights of the decision:

- The closure of the towns listed in the decision starting from 6:00 a.m. on Monday 10/19/2020 until 6:00 a.m. on Monday, 10/26/2020, provided that work stops in all official and private administrations and institutions within those villages and cancellation All social events, parties, parties and gatherings of all kinds, and coordination with the clergy to close the places of worship, and this decision specified the sectors excluded from the closure decision.
- Keeping work at the time of preventing exit and entering the streets and roads between the first hour of midnight until six in the morning.
- Determining the number of people traveling by public and private transport (3 people in public cars, 4 people in private cars, half the carrying capacity of common transport vehicles and buses). • A complete closure until further notice, and without any exceptions, for all bars, cabarets and nightclubs all over the Lebanese territories, under penalty of referring the violators to the competent court.
- The commitment of citizens in all regions to wear a mask, maintain safe distances, and avoid overcrowding when forced to move.
- The decision to open or close educational institutions and administrative units of the Ministry of Education and Higher Education in unlocked towns and villages is limited to the Minister of Education and Higher Education.
- Assigning governors to determine the municipal zone in the major towns included in the decision and overlapping with other towns, taking appropriate measures to implement the content of the decision and requesting the support of the security forces when necessary, stressing citizens in villages and towns that will be closed with the necessity to remain in homes and not to walk around and to wear a muzzle when Forced mobility, asking the district administrators to instruct the mayors to review the daily lists of positive cases that are sent to them via the IMPACT platform to check them and correct their data as soon as they are received, and to assign them to supervise this task in coordination with the Judicial Doctor and the Lebanese Red Cross.
- Assigning the General Directorate of Internal Security to strictly enforce this decision and suppress violations and organize seizure records against violators

Note: The decisions can be found at www.drm.pcm.gov.lb

Examples of lack of adherence to safety measures

Failure of some municipalities to abide by the Ministry of Interior and Municipalities Decision No. 1025/2020 related to the closure of towns that have a high risk of the spread of the epidemic.

- Demand gatherings and demonstrations.
- Failure to comply with the preventive measures and procedures required in several stores and markets (putting on a muzzle or face mask, sterilizing hands, maintaining a safe distance).
- Non-compliance with the 50% occupancy rate in several restaurants and amusement game centers.
- Gatherings for social events.
- Failure of those in contact with confirmed cases to adhere to home isolation procedures until the results of the laboratory tests are issued.

If you feel any symptoms, call directly the hotline of the Ministry of Public Health: 1214 or 01/594459

A list of the laboratories accredited by the MoPH to conduct PCR tests

المختبرات الحكومية المؤهلة لإجراء التشخيص المخبري لفيروس كورونا بطريقة الـ RT-PCR

المختبر	الموقع
مستشفى رفيق الحريري الجامعي RHUH	بيروت
مستشفى حيا الحكومي	حيا
مستشفى طرابلس الحكومي	طرابلس
مستشفى البترون الحكومي	البترون
مستشفى فتوح كسروان الحكومي (البوار)	كسروان
مستشفى نبيه بري الحكومي الجامعي	النبطية
مستشفى تينين الحكومي	تينين
مستشفى بنت جبيل الحكومي	بنت جبيل
مستشفى بعطيك الحكومي	بعطيك
مستشفى الرئيس الياز اليراي الحكومي	زحلة

مختبرات المستشفيات العسكرية

المستشفى العسكري المركزي في بيروت Hôpital Militaire Central	بيروت
---	-------

المختبرات المؤهلة لأخذ عينات "المسحات الأنفية" بطريقة Drive- thru

مختبر ميديكال دياغنوستيك تريمانت سنتر (الحمراء)	بيروت
Medical Diagnostic Treatment Center (MDTC)	بيروت
مختبر ميد لآب MedLab SAL CIC ALS (الحمراء - الجليل)	بيروت
مختبرات عيتاني Itani Medical Laboratories (المزرعة)	بيروت
مختبر أ ب سي ABC Laboratories	الأشرفية
مختبرات معوض الطبية Mouawad Medical Laboratory	الشياح
مختبرات الشياح (د. فؤاد ربحان) Rihan Medical Center	الشياح
مختبر إكسبيرت لآب Expert Lab	المنصورة
مختبر لايف لآب Life LAB	بعطيك
مستشفى الرياق Riyak Hospital	رياق

المختبرات الخاصة المؤهلة لإجراء التشخيص المخبري لفيروس كورونا بطريقة RT-PCR

الموقع	المختبر
بيروت	مستشفى الجامعة الأميركية AUBMC
بيروت	مستشفى أوتيل ديو الجامعي (HDF) Hotel-Dieu de France
بيروت	مختبرات رودولف ميرييو (الجامعة اليسوعية – المتحف) Laboratoire Rodolphe Mérieux (Université Saint-Joseph)
بيروت	مستشفى القديس جاورجيوس الجامعي Saint-George Hospital - UMC
بيروت	مستشفى المقاصد Makassed General Hospital
بيروت	مستشفى رزق الجامعي LAU Medical Center - Rizk Hospital
بيروت	مستشفى اللبناني الجعيتاوي الجامعي Hôpital Libanais Geitawi - CHU
بيروت	مستشفى الوردية Hôpital Notre-Dame du Rosaire
بيروت	مختبر مركز الأطباء Doctor 's Center
بيروت	مختبر فونتانا (الحمرا) Fontana Laboratories
بيروت	مختبر الأمن العام (العذلية)
بيروت	مختبرات جبر وعرة Laboratoire Jabre-Ghorra
بيروت	مختبر السان مارك Saint Marc Medical & Diagnostic Center
الغبيري	المختبرات الحديثة Laboratoire Moderne (Modern Lab- Berjaoui)
الغبيري	مستشفى الساحل Sahel General Hospital (SGH)
الغبيري	مستشفى الزهراء الجامعي
برج الزلاجة	مستشفى الرسول الأعظم Al Zahraa Hospital - UMC
حارة حريك	مستشفى بهمن Bahman Hospital
حارة حريك	مختبر ناتيونال دياغنوستك سرفيس كومباني National Diagnostic Services Company (NDSC)
البرجة	مختبر الدكتور محمود عثمان - مركز التحليل الطبية Medical Diagnostic Center
النجاح	مختبر أميريك دياغنوستك سنتر American Diagnostic Center (ADC)
بعنا	مستشفى جبل لبنان Mount Lebanon Hospital
بعنا	مستشفى السان جورج الحدث Hôpital Saint-George – Hadath
بعنا	مختبر الهادي Al Hadi Laboratory
بعنا	مختبر INOVIE-Liban

الحازمية	مستشفى قلب يسوع Hôpital du Sacré- Coeur
الحازمية	مختبر كلينيجان Clinigene
المتن	مستشفى سرحال Hôpital Dr.Samir Serhal
المتن	مختبر ترانسيميديكال فور ليف Transmedical for Life
الزلفا	مستشفى هارون Haroun Hospital
المنصورة	مستشفى بلفو Bellevue Medical Center (BMC)
الكورة	مستشفى هيكال Hôpital Albert Haykal
زغرتا	مركز الشمال الإستشفائي Centre Hospitalier du Nord (CHN)
طرابلس	مستشفى المظلوم Mazloum Hospital
طرابلس	مستشفى المنلا Al Mounla Hospital
طرابلس	مستشفى النيني Nini Hospital
طرابلس	مختبر ميكروبيولوجيا الصحة والبيئة LMSE – المعهد العالي للدكتوراه، الجامعة اللبنانية
جبل	مستشفى سيدة المعونات الجامعي CHU - Notre-Dame des Secours
جبل	مختبر عقيقي وبولس Lab Akiki & Boulos
جونية	مختبر واكيم Centre Médical Wakim
الشوف	مستشفى عين وزين Ain Wazein Hospital
صيدا	مستشفى حمود الجامعي Hammoud Hospital UMC
صيدا	مختبر الكريم Al Karim Medical Laboratory (KML)
البيتمنة	مستشفى الشيخ راجب حرب Sheikh Ragheb Harb Hospital
البيطية	مختبر الصياح Sabbah Diagnostic Center (SDC)
صور	مستشفى جبل عامل Jabal Amel Hospital
صور	مختبر المشرق Mashrek Diagnostic Center (MDC)
بطيك	مستشفى دار الأمل الجامعي Dar Al Amal University Hospital
زحلة	مستشفى خوري Khoury General Hospital
زحلة	مختبر ميديكال كير سنتر Medical Care Center (MCC)