



Lebanon National Operations Room Daily Report on COVID-19

New in the Report:

- Recommendations of the meeting of the Committee for Follow-up of Preventive Measures and Measures to Confront the Coronavirus on 9/16/2020.
- An online link to follow up on the number of beds available for people infected with Coronavirus in hospitals and the occupancy rate during the past 24 hours.
- An online link to monitor the commitment of different sectors to the general mobilization procedures.

Wednesday, September 17, 2020

Report #183

Time Published: 9:30 PM

26,768
Total registered cases
since Feb.21

1,506 **25,262**
Leb Expts Locals

685
New Cases

16 **669**
Leb Expts Locals

662,098
Conducted PCR tests in
labs since Feb.21

10,013
PCR tests conducted
tests for locals in the last
24 hrs (in labs)

1,778
PCR tests conducted
tests in airport in the
past 24 hrs

263
Deaths

4
New Deaths

10,217
Recoveries

810
Cases registered among
medical staff

14
Cases registered among
medical staff in the past
24 hrs

16,288
(Active Cases)

15,834
In home Isolation

20
Mild Cases in the
Past 24 hrs

8
In ICU in the past 24
hrs

454
Currently hospitalized

326
Cumulative Mild Cases

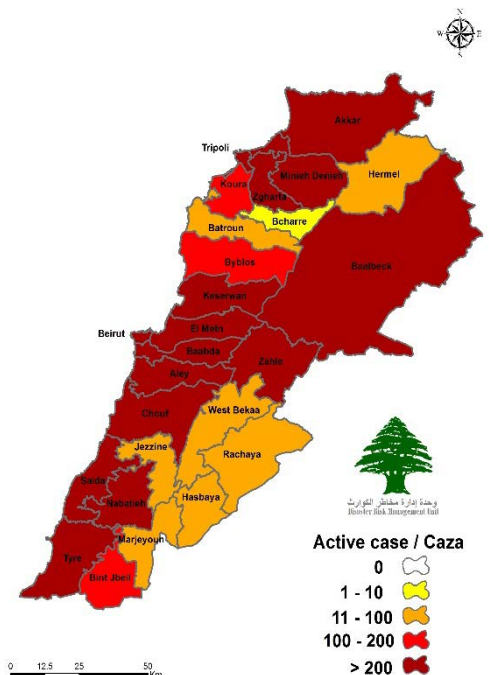
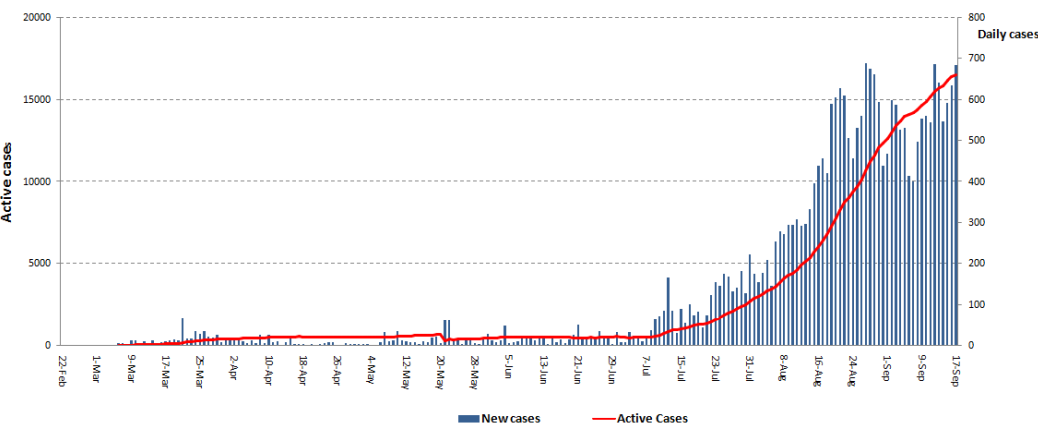
128
Cumulative In ICU

	Lebanon	Internationally
Total registered cases	26,768	30,124,354
Total deaths	263	946,696
Percentage of deaths	0.98%	3.14%
Number of recoveries	10,217	21,863,205

*The Above data was last updated at 10:00 PM

Number of Cases by Location

- 5862 case is Under investigation



Active case / Caza

- 0
- 1 - 10
- 11 - 100
- 100 - 200
- > 200

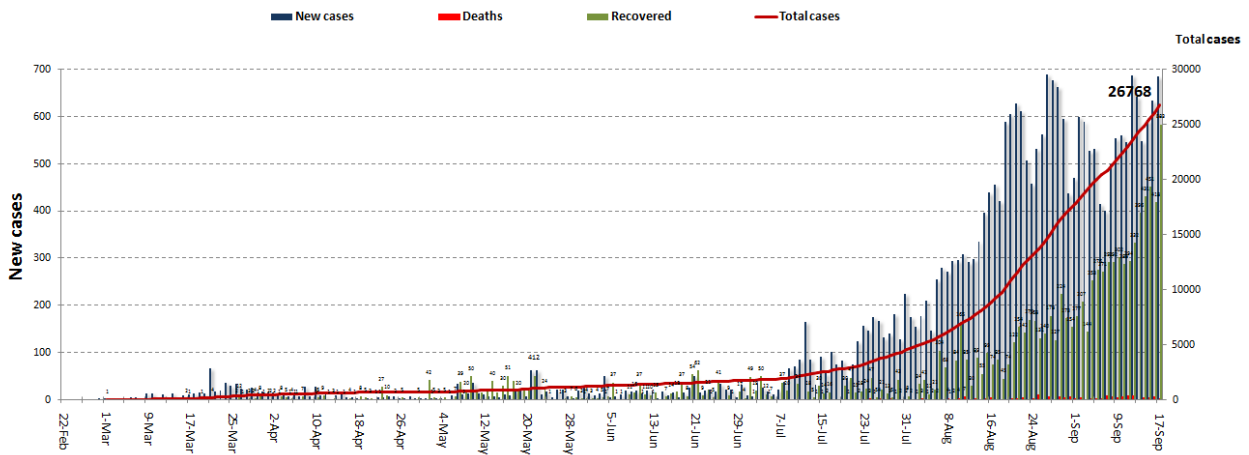
Beirut	Cases
Ras Beirut	5
Manara	1
Hamra	7
Rouche	4
Ein El Teeneh	1
Mseitbeh	3
Malaab Baladi	1
Zarif	1
Mazraa	4
Borj Abi Haydar	3
El Basta El Fawka	1
Tariq Jdeedah	18
Ras El Nabeh	2
Achrafieh	14
Others	7
Baabda	Cases
Chiah	5
Jnah	1
Ouzai	6
Qernayel	1
Hammana	1
Bsaba	3
Bir Hassan	10
Ghobeiry	5
Ein El Rimmaneh	5
Furn El Chibbak	2
Haret Hreik	11
Laylaki	4
Borj El barajneh	17
Mreijeh	5
Kfarshima	2
Hazmieh	4
Hadat	8
Yarze	1
Tahweetet El Ghadir	4
Baabda	6
Others	4
Tripoli	Cases
Qebbeh	11
Wady El Nahle	2
Mina	10
Others	10
Zghorta	Cases
Majdlayya	2
Haret El Jdeideh	1
Kfarshakhna	1
Sakhra	1
Rasheen	1
Zghorta	3
Harf Erdeh	1
Aqbeh Sebaal	1
Mezyara	1
Beqaa El Gharby	Cases
Sultan Yaacoub	1
El Marj	1

Matn	Cases
Borj Hammoud	2
Rawda	1
Sin El Fil	8
Doura	5
Bouchrieh	1
Jdeidet El Metn	5
Beit El Chaar	1
Jesr El Basha	1
Dekwene	10
Jal El Deeb	2
Antelias	2
Naqqash	2
Zalka	2
Dbayeh	3
Mansouriyeh	8
Baabdat	2
Roumieh	35
Qornet Chehwan	1
Broumana	2
Rabieh	2
Bekfayya	2
Mazraaet Yashouh	1
Zikrit	2
Safeele	1
Deek El Mahdi	2
Sad El Bouchrieh	1
Byaqout	1
Fanar	2
Montevede	1
Bsalim	1
Mtayleb	1
Qornet El Hamra	1
Others	1
Marjouyon	Cases
Taybe	1
Khiyam	5
Hermel	Cases
Mansoura	1
Zahle	Cases
Mar Michael	2
Mar Elias	1
Ferzol	1
Hazzarta	1
Shtoura	1
Qab Elias	1
Majdel Anjar	1
Riyak	2
Mreijat	2
Kfar Zabad	8
Bar Elias	3
Deir Zannoun	1
Others	3

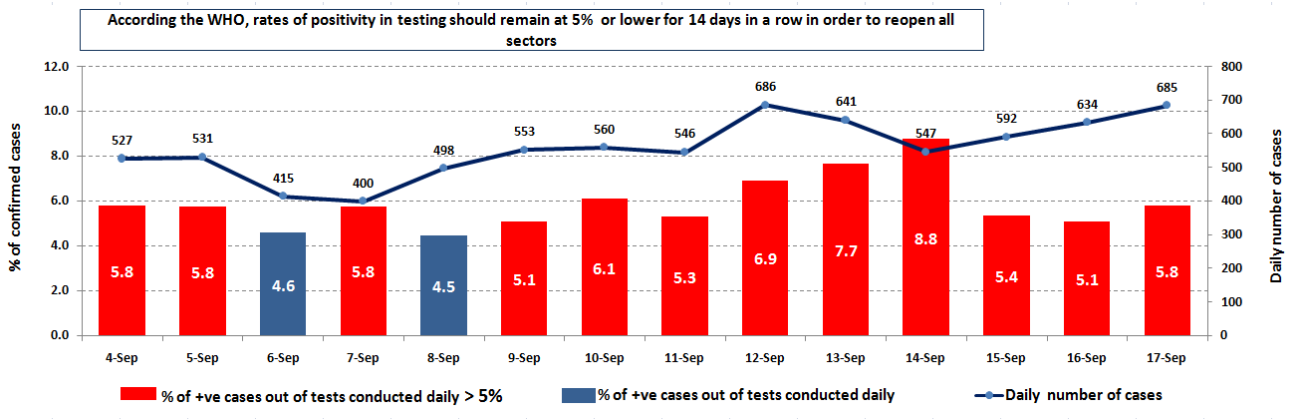
Aleyh	Cases
EL Amrousiyyeh	4
El Oumara	2
Aley	1
Khaldeh	7
Hay El Sillom	9
Aramoun	4
Bleibel	2
Bsous	1
Souk El Ghareb	1
Bsateen	1
Keserwan	Cases
Sarba	2
Zouk Michael	3
Zouk Mosbeh	4
Kaslik	1
Ghodras	1
Kfar Yassine	1
Qatteen	1
Kfar Hbab	1
Qleiaat	1
Raasheen	2
Nabatieh	Cases
Houmin el Fawka	1
Roumeen	4
Mayfadoun	1
Douweir	1
Others	1
Jezzine	Cases
Katrany	1
Menyeh Dunnyyeh	
Menyeh	2
Bhannin	1
Sour	Cases
Teir Falasayh	2
Abbasieh	1
Others	7
Rashayya	Cases
Kherbet Rouha	4
Chouf	Cases
Naameh	1
Mazboud	1
Barja	2
Chehim	3
Anout	1
Baaklin	2
Siblin	3
Jiyyeh	1
Wady El Zayneh	2
Baqaata	2
Kfarheem	1
Ammatour	1
Kfarnabrakh	1
Mraste	1
Btalloun	1

Bint Jbel	Cases
Bramieh	1
Miyye w Miyye	5
Majdlyoun	1
Ein El Hilwe	4
Hlalieh	6
Abra	2
Ghazieh	2
Maghdoushe	2
Bablieh	2
Iskandarouna	1
Ghassanieh	2
Sarafand	1
Najjarieh	1
Others	19
Jbeil	Cases
Eddeh	1
Amchit	1
Halat	1
Jbeil	1
Fedar	1
Mishmish	1
Qartaba	1
Tartej	1
Others	2
Koura	Cases
Bsarma	1
Kousba	1
Bdebba	1
Btouratej	2
Anfeh	1
Ras Masqa	1
Dahr El Ein	2
El Chemaliyyeh	1
Barsa	1
Others	1
Akkar	Cases
Sheikh Taba	1
Tekreet	1
Bebnin	2
Akkar El Atika	1
Tal Hmayra	1
Hrar	2
Others	4
Batroun	Cases
Shekka	1
Kfar Abida	1
Besbina	1
Ras Nhash	1
Douma	1

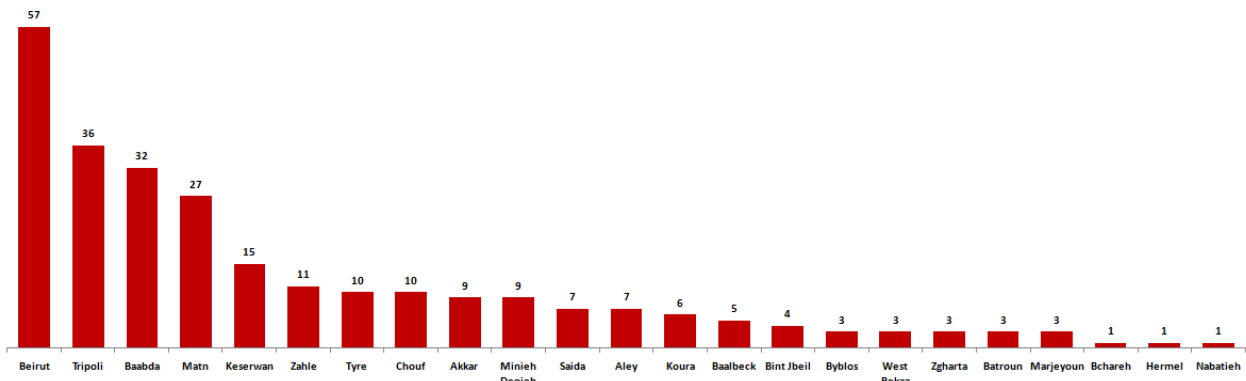
Cases per day



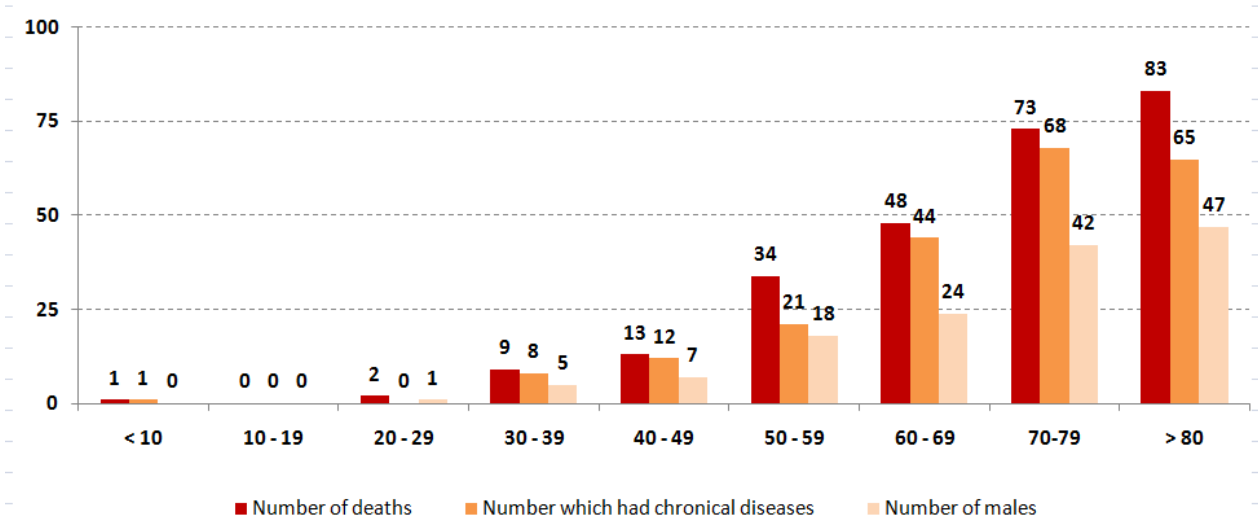
The percentage of positive cases out of the number of daily checks (3 September to 16 September 2020)



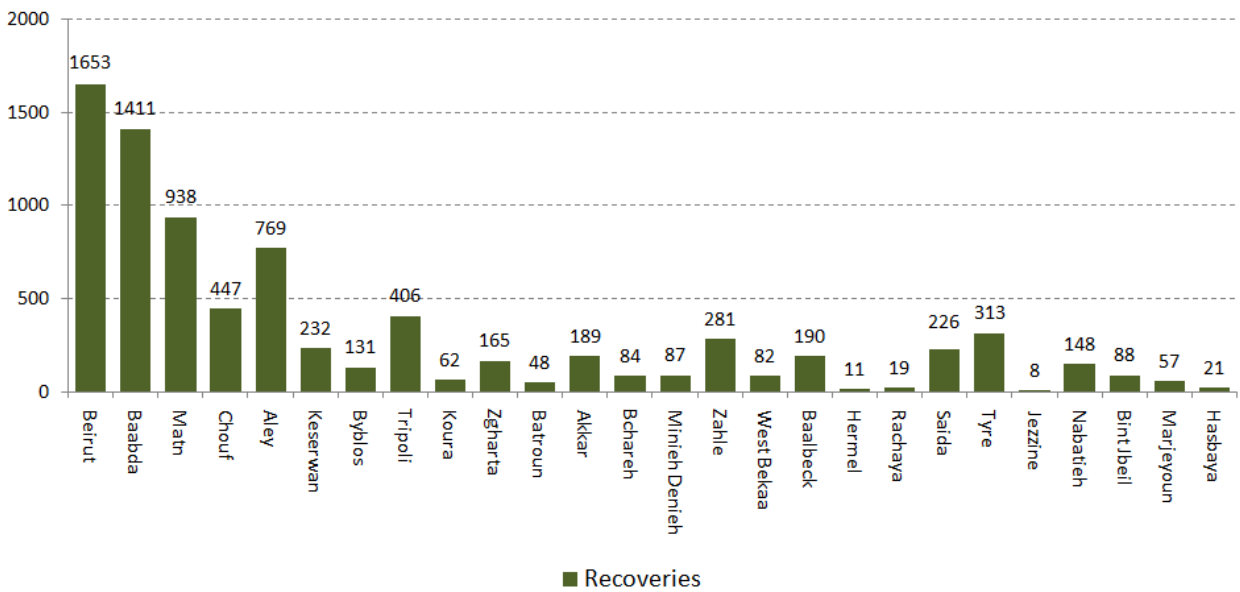
Distribution of deaths by Governorates



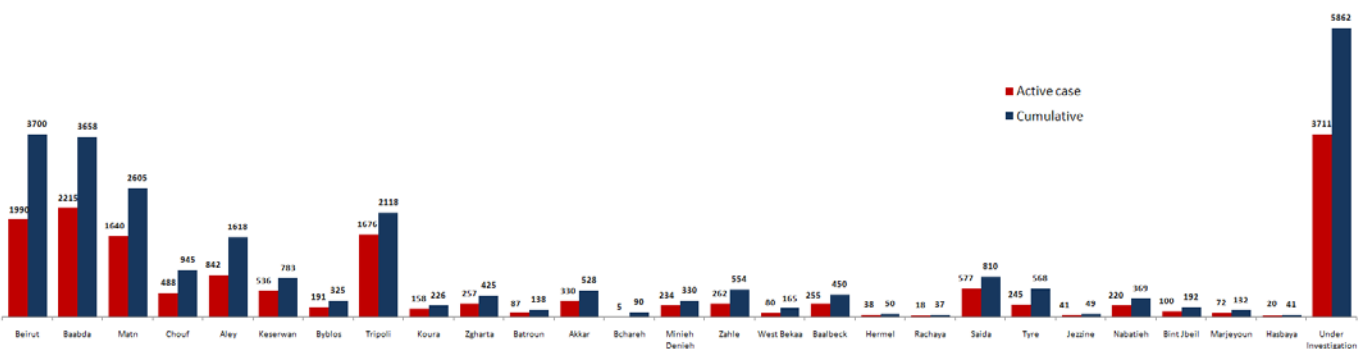
Distribution of deaths by Age



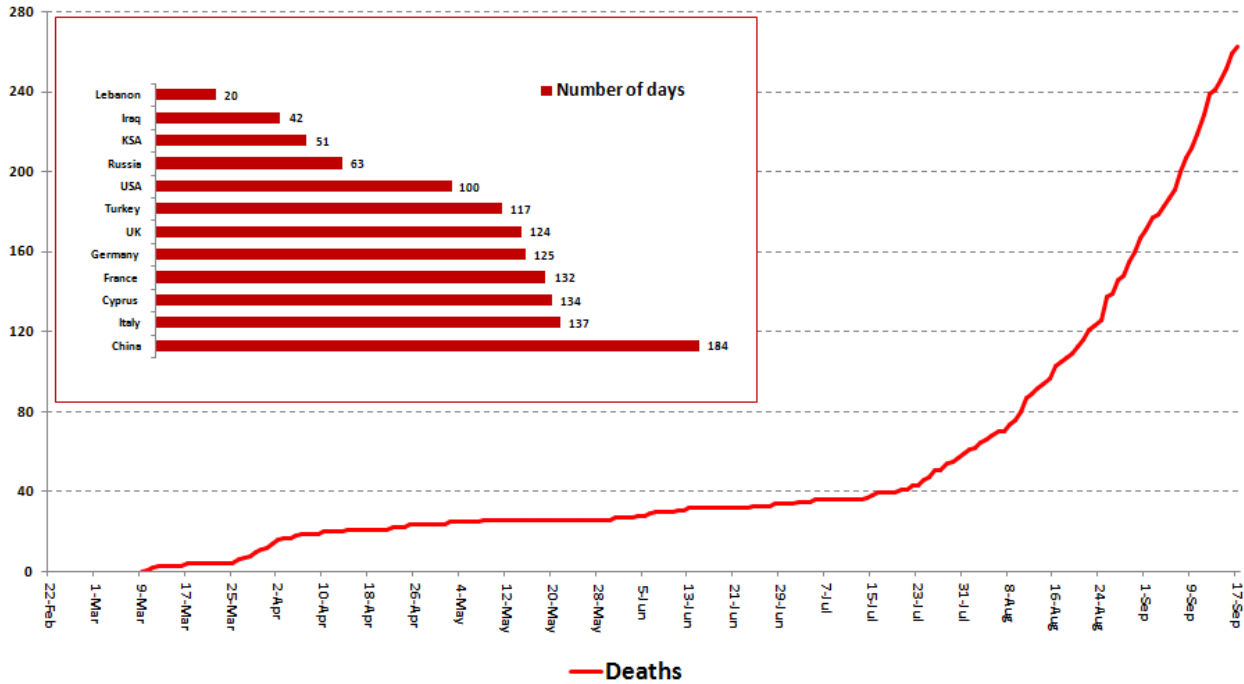
Distribution of Recoveries by Districts



Distribution of Active Cases by Districts



Comparison of the rate of doubling of the number of deaths in Lebanon with other countries (death doubling rate)

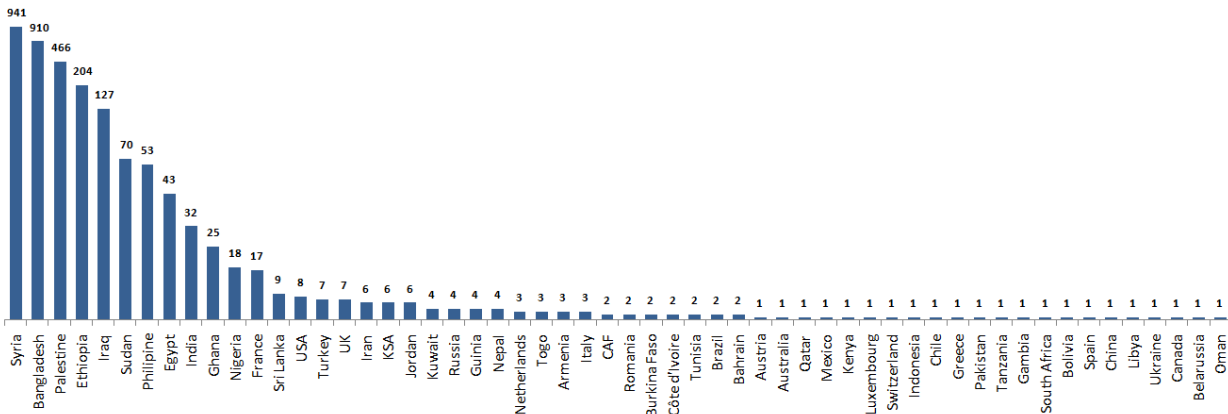


The distribution of the recorded deaths during the past 24 hours

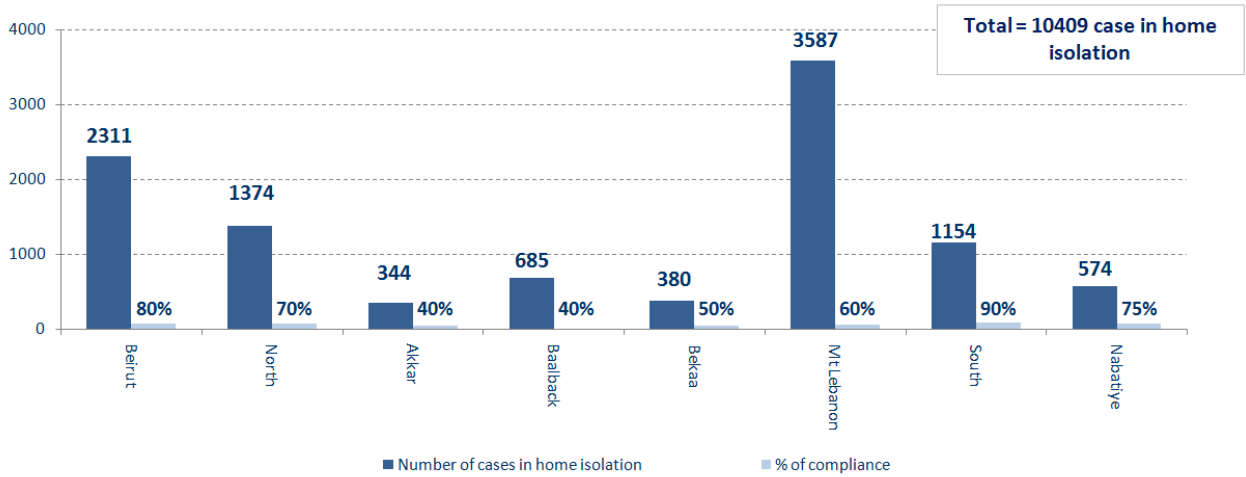
Hospital	Residence	Gender	Age	Chronic Disease
Tripoli Gov.	Tripoli	Male	68	Yes
Mazboud	Aley	Male	71	Yes
Harire Gov.	Maten	Female	43	Yes
Haykal	Tripoli	Female	77	Yes

Distribution of cases by nationality

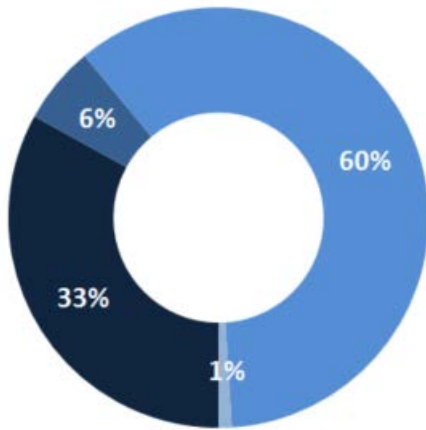
Lebanese : 23749 cases out of 26768(88%)



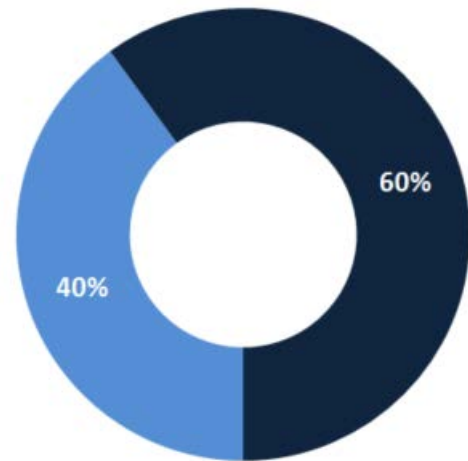
Number of individuals in home isolation and percentage of commitment to isolation



Exposure



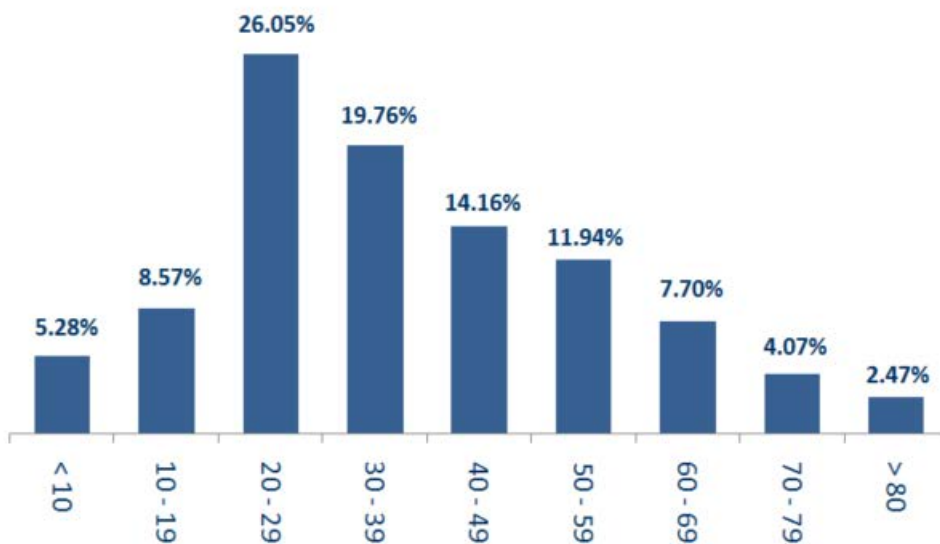
Distribution according to gender



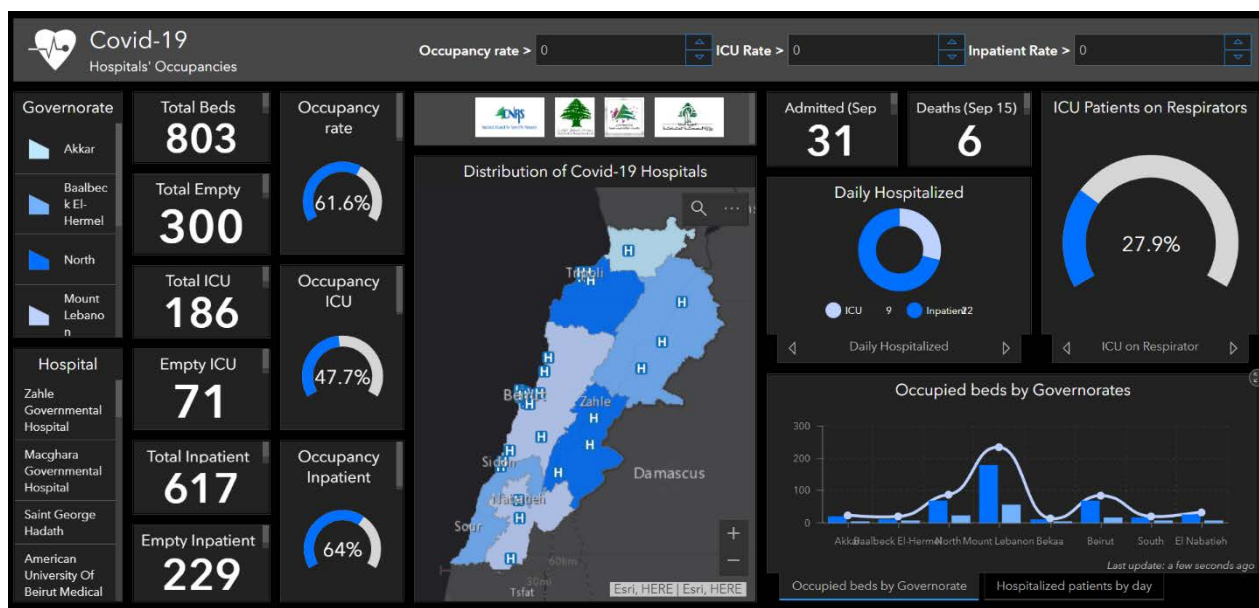
■ Contact with confirmed case ■ Travel related ■ Under investigation ■ Unidentified source

■ Female ■ Male

Distribution by age



The number of beds available for those infected with Coronavirus and the occupancy rate



For daily information on all the details of the bed distribution available for Covid-19 patients in the various governorates according to the hospitals

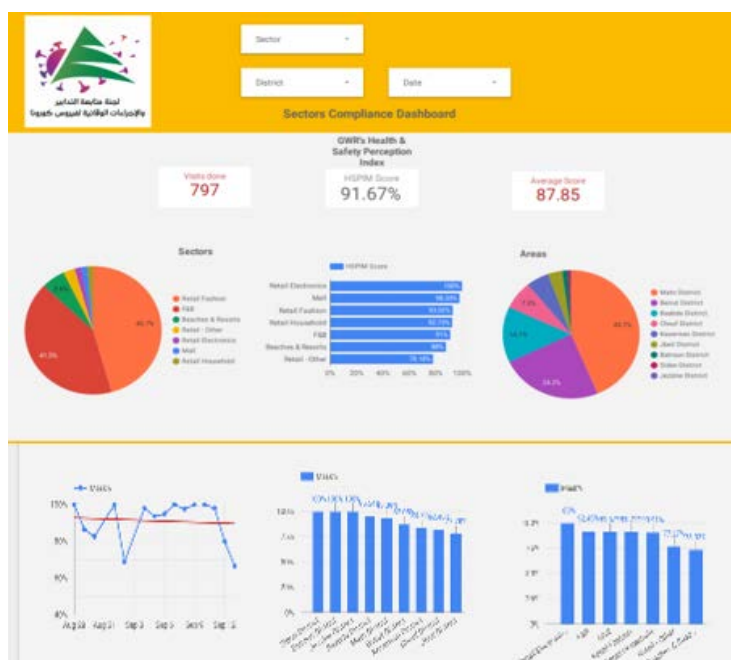
- Computer: <https://gisleb.cnrs.edu.lb/portal/apps/opsdashboard/index.html#/34b32db8030d4f229fc5db9ab686cca9>
- Mobile: <https://shorturl.at/cnqJ2>

Online platform to track sector commitment in general mobilization procedures

Based on the recommendation issued by the National Committee for Follow-up of Preventive Measures and Measures to Confront the Coronavirus to open all sectors, provided that the general mobilization procedure (safe distance, muzzle, and hand sterilization) be applied, a special electronic platform was created that allows monitoring and measuring the percentage of commitment by various sectors on an ongoing basis.

The detailed results can be viewed directly at the following link:

<http://bit.ly/covidsectordata>



Decisions and actions taken – 17/09/2020

Ministry of Public Health

The Ministry of Public Health is working to develop a rapid response plan for prisons in Lebanon, after recording infections with the Coronavirus among prisoners, in cooperation between the Ministry and its partners in the health and humanitarian field, as the plan will include steps and escalatory measures based on the evaluation of the spread of the virus in a way that allows securing the required health and hospital accompaniment.

The Ministry of Public Health issued the results of additional examinations for incoming trips to Lebanon on 13, 14 and 15 September 2020, when ten new positive cases were recorded and distributed over the following flights:

Arriving from	Company	Flight Number	Number of Positive Cases
13/09/2020			
Bghadad	MEA	323	3
14/09/2020			
Istanbul	MEA	266	1
Dubai	FZ	159	1
Istanbul	Turkish Airlines	828	3
Adis Abab	Ethopian Airways	406	1
15/09/2020			
Istanbul	MEA	266	1
			10

Lebanese Red Cross

221,647 (2100 New)	Number of PCR tests transferred to laboratories	44,511 (27 New)	Number of additional ambulance centers ready to respond	48	ambulance centers	4,899 (41 New)	cases transferred to hospitals
166	Number of volunteers trained to transfer PCR tests	1,498	Number of trained paramedics	8,591 (7 New)	total number of respondents	75,897 (620 New)	number of those benefiting from awareness *sessions
967	The number of university volunteers trained to follow up on prevention measures in companies and institutions	217	Number of university volunteers trained to conduct awareness sessions	550	total LRC volunteers for covid19	8,430 (15 New)	number of trained managers for isolation centers
4,201 (2 New)	Number of beneficiaries from educational electronic platforms COVID-19	89,604 (130 New)	Number of distributed equipment	1,234,228	total distributed posters, brochures, and flyers on covid19 prevention	505 (7 New)	number of prisons that have been disinfected

General Directorate of State Security

- Investigating and following up on suspected and positive cases and cases in home quarantine for residents and expatriates.
- Sending warnings and closing a number of violating commercial stores in the various regions.

Beirut	South	North	Akkar	Beqaa	Nabateih	Baalbek Hermel	Mount Leb
25%	50%	60%	50%	55%	55%	20%	30%

General Directorate of Internal Security Forces

- Internal Security Forces circulated the preventive measures that must be followed when traveling by cars and using shared transportation and public cars.
- Writing arrest records against violators of the general closure decision

The number of seizure records during the past 24 hours					The total number of records that have been organized against violators of the general mobilization decisions since 03/08/2020	
Written records of violating institutions (absorptive capacity and preventive measures)					0	
Written records of persons violating the decision to wear a mask					19	Beirut 20,633
Written records of people violating the general mobilization decision (Aragil* and social distancing)					18	Mount Leb 18,812
Total					37	Beqaa 8,002
						North 6,783
Beirut	Mount Leb	Beqaa	North	South	South	6,753
9	9	0	3	17	Total	60,983

Ministry of Public Works and Transportation

Departing Flights		Arriving Flights	
Number of Flights	33	Number of Flights	32
Number of Departing Individuals	3,145	Number of Arrivals	2,303

Port	Entered			Left		
	Import	Direction	#	Export	Direction	#
Beirut	Gasoline	Zouk Port	1	Containers	Mersin	1
	Oil	Turkey	1	Containers	Tartous	1
Jbeil	Gasoline	Italy	1			
			3			
				2		

General announcements

The following recommendations were issued by the Committee for Follow-up of Preventive Measures and Procedures for Coronavirus on 9/16/2020:

- That the Ministry of Public Health prepare a list of countries in which the PCR examination is considered reliable and approved in Lebanon, and another list of countries where this examination is not reliable and is not accredited in Lebanon.
- That the Ministry of Public Works and Transport circulate through the General Directorate of Civil Aviation to the concerned authorities the approved procedures as follows:

Countries where PCR testing is reliable and approved in Lebanon	Countries where PCR testing is considered unreliable and unsupported in Lebanon
<ul style="list-style-type: none">- The expatriate's possession of a negative test result dating back to a maximum of 96 hours from the date of arrival in Lebanon.- Choose to quarantine for a period of 9 days or re-examination after a period of 72 hours	<ul style="list-style-type: none">- The expatriate's possession of a negative test result dating back to a maximum of 96 hours from the date of arrival in Lebanon.- Perform a PCR examination upon arrival at Beirut International Airport.- Commitment to quarantine for a period of 5 days (place of residence or hotel according to the approved instructions).- Members of diplomatic missions accredited in Lebanon are exempt from conducting the examination upon arrival at the airport, provided that the examination procedure is performed after the five-day quarantine period has expired

- That the Ministry of Tourism circulate to restaurants, cafes, restaurants and tourism establishments full compliance with the Smoking Reduction Law No. 174/2011, while restricting the provision of hookahs to open spaces and adhering to all preventive measures circulated by the Ministry in this regard.
- Reopening of cinemas, theaters, amusement parks, parks and indoor spaces for children's games, provided that the occupancy rate of 50% as a maximum is adhered to and that all preventive measures and measures are adhered to.
- The Minister of Interior and Municipalities issued Decision No. 1129 of 9/17/2020 to amend the opening and closing times for industrial and commercial enterprises, as the timing of the prevention of exit and entry into the streets was kept between the first hour of midnight until six in the morning of every day, and approved the recommendations issued For the meeting of the Committee for Follow-up of Preventive Measures and Measures to Confront the Coronavirus on 9/16/2020.

Note: The decisions can be found at www.drm.pcm.gov.lb

Examples of lack of adherence to safety measures

- Demand gatherings and demonstrations.
- Failure to comply with the preventive measures and procedures required in a number of stores and markets (putting on a muzzle or face mask, sterilizing hands, maintaining a safe distance).
- Non-compliance with the 50% occupancy rate in several restaurants and amusement game centers.
- Gatherings for social events.
- Failure of those in contact with confirmed cases to adhere to home isolation procedures until the results of the laboratory tests are issued.

If you feel any symptoms, call directly the hotline of the Ministry of Public Health: 1214 or 01/594459

A list of the laboratories accredited by the MoPH to conduct PCR tests

Public Hospitals			
Hospital Name	Location	Hospital Name	Location
Rafic Hariri University Hospital	Beirut	Bint Jbeil Governmental Hospital	Bint Jbeil
Tripoli Governmental Hospital	Tripoli	President Elias Hrawi Governmental Hospital	Zahle
Fattouh Keserwan Governmental Hospital	Kesrwen	Batroun Governmental Hospital	Batroun
Baalbek Governmental Hospital	Baalbek	Halba Governmental Hospital	Halba
Tibnin Governmental Hospital	Tibnine		
Private Hospitals			
Hospital/Lab Name	Location	Hospital/Lab Name	Location
AUBMC	Beirut	MLH	Baabda
Saint George Hospital	Beirut	Saint Georges Hospital	Baabda
Hôpital Notre Dame des Secours (CHU – NDS)	Jbeil	Ain w Zein Hospital	Chouf
HDF/Merieux/USJ	Beirut	Hamoud Hospital	Sidon
Makkassed General Hospitals	Beirut	Dar el Amal Hospital	Baalbek
LAUMC	Beirut	Sheikh Ragheb Harebb Hospital	Nabatieh
Wardieh Hospital	Beirut	Al Hadi Laboratory	Baabda
Al Mathlum Hospital	Tipoli	Akiki Laboratory	Byblos
Al Mounla Hospital	Tripoli	MDC	Tyr
Haykal Hospital	Koura	Jabal Amel Hospital	Tyr
Serhal Hospital	Metn	Doctor's Center	Beirut
HLG	Beirut	KML	Sidon
SDC	Nabteih	ADC*American Diagnostic Center	Beirut
INOVIE Laboratory	Baabda	Khoury Hospital	Zahle
TRANSMEDICAL Laboratory	Metn	Sacre Coeur	Hazmieh
MCC	Zahle	BELLEVUE Hospital	Mansourieh
CHN	Zaghrta	LMSE	Tripoli
Clinigen Laboratory	Hazmieh	Al Rasoul Al Aazam Hospital	Beirut
Centre Medical Moderne	Ghbraye	Nabni Hospital	Tripoli
MDTC	Hamra		

Note: Some positive test results are sent from the highlighted laboratories to the Ministry of Public Health, that does not include a phone number to track cases, which contributes to the spread of the epidemic and unknown cases