



# Lebanon National Operations Room Daily Report on COVID-19

Thursday, December 17, 2020

Report #274

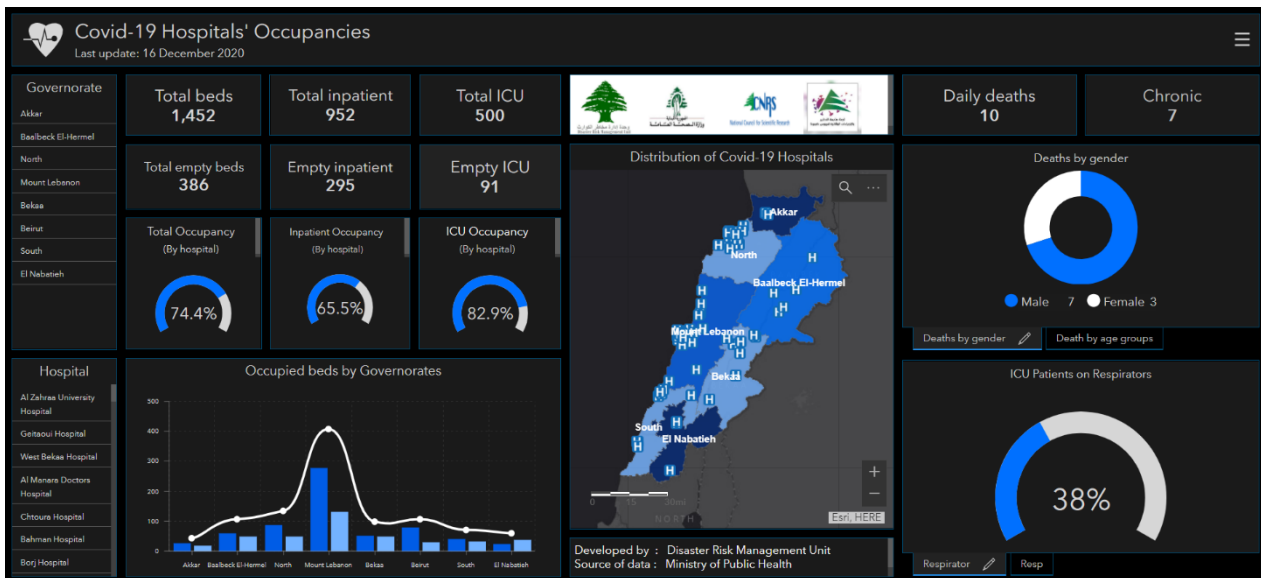
Time Published: 08:30 PM

**New in the report:** Recommendations issued by the meeting of the Committee for Follow-up of Preventive Measures and Measures to Confront the Coronavirus on 12/16/2020

<b>1,960</b> New Cases		<b>152,893</b> Total Cases since 21.2.2020		<b>1,248</b> Total Deaths		<b>106,705</b> Total Recovered	
<b>1,932</b> Residents	<b>28</b> Expats	<b>149,770</b> Residents	<b>3,123</b> Expats	<b>14</b> New Deaths		<b>1,493</b> New Recovered	
<b>138</b> Deleted Status due to its recurrence	<b>1,877</b> Total Cases in the Health Sector		<b>44,940</b> Total Active Cases	<b>995</b> Hospitalized Cases			
<b>12.6%</b> AVG Positivity rate	<b>99</b> Cases in the Health Sector		<b>43,945</b> Cases in Home Isolation	<b>139</b> Ventilated Cases	<b>0</b> New Cases in ICU	<b>406</b> Total cases in ICU	<b>589</b> Mild cases
<b>1,693,045</b> COVID-19 Tests since 21.2.2020		<b>Lebanon Status compared to the World</b>					
<b>1234</b> COVID-19 Tests at Airport within 24 hrs.	<b>12,810</b> COVID-19 tests for residents within 24 hrs.		<b>Total Cumulative</b>	<b>152,893</b>		<b>73,452,304</b>	
			<b>Total Deaths</b>	<b>1,248</b>		<b>1,633,936</b>	
			<b>Deaths percentage</b>	<b>0,81%</b>		<b>2.23%</b>	
			<b>Total recoveries</b>	<b>106,705</b>		<b>51,542,762</b>	

Ref: Ministry of Public Health Data

## Occupancy rate of COVID-19 Beds and Availability



For daily information on all the details of the beds distribution availability for Covid-19 patients among all governorates and according to hospitals, kindly check the dashboard link:

Computer: <https://bit.ly/DRM-HospitalsOccupancy-PC> Phone: <https://bit.ly/DRM-HospitalsOccupancy-Mobile>

All reports and related decisions can be found at: <http://drm.pcm.gov.lb>

Or social media @DRM\_Lebanon

## Distribution of Cases by Villages

Beirut	209	Baabda	250	Maten	242	Chouf	106	Kesrwen	80	Aley	142
AIN MRAISSEH	7	CHIAH	19	BORJ HAMMOUD	16	DAMOUR	2	JOUNIEH SARBA	6	EL AAMROUSSEYEH	4
RAS BEYROUTH	4	JNAH	14	SINN FIL	12	NAAMEH	1	ZOUK MKAYEL	4	HAY ES SELLOM	18
MANARA	5	OUZAAI	3	HORCH TABET	1	HARET EN NAAMEH	1	JOUNIEH GHADIR	3	KHALDEH	1
QREITEM	3	BIR HASSAN	6	JISR BACHA	1	CHHIM	4	ZOUK MOSBEH	10	EL OUMARA	20
HAMRA	18	GHBAYREH	5	JDAIDET MATN	8	MAZBOUD	1	ADONIS	2	DEIR QOUBEL	3
AIN TINEH	2	AIN ROUMMANEH	10	BAOUCHRIYEH	8	DARAIYA (CHOUF)	1	HARET SAKHR	9	AARAMOUN (AALEY)	13
MSAITBEH	6	FURN CHEBBAK	2	DAOURA	6	KETERMAYA	5	SAHEL AALMA	4	BAAOUERTA	2
OUATA MSAITBEH	1	HARET HREIK	50	RAOUDA	5	AANOUT	1	ADMA OUA DAFNEH	1	BCHAMOUN	11
MAR ELIAS	3	LAYLAKEH	7	SADD BAOUCHRIYEH	3	SIBLINE	1	SAFRA	5	AIN AANOUB	1
UNESCO	1	BORJ BRAJNEH	36	SABTIYEH	3	BOURJEIN	3	AAQAYBEH	3	BLAYBEL	4
TALLET KHAYAT	4	MREJEH	13	DEIR MAR ROUKOZ	1	BARJA	25	AAJALTOUN	1	AALEY	12
ZARIF	5	TAHOUITAT GHADIR	2	DEKOUANEH	16	BAASSIR	7	BALLOUNEH	4	KAHHALEH	5
MAZRAA	12	BAABDA	6	MKALLES	1	DAHR AIN HAOUR	1	SHAYLEH	4	BKHICHTAY	2
BORJ ABOU HAIDAR	3	HAZMIYEH	4	ANTELIAS	8	JIYEH	4	JAAITA	1	GHABOUN	2
BASTA FAOUQA	7	HADATH	38	MANQLET MEZHER	1	JADRA	3	GHAZIR	2	KEYFOUN	1
TARIQ JDIDEH	22	JAMHOUR LOUAIZEH	4	JALL DIB	9	OUADI EZ ZAYNI	2	KFAR HBAB	2	BAYSSOUR (AALEY)	4
RAS NABAA	10	KFAR CHIMA	1	NAQQACH	3	RMEILEH	1	DLEBTA	2	DOUAIR ER REMMANE	1
BACHOURA	1	BSABA	2	ZALQA	6	JOUN	1	KFOUR	1	CHARTOUN	1
BASTA TAHTA	6	BAALCHMAY	1	BYAQOUT	6	MGHAYRIYEH	2	QATTINE	1	BINNAY	1
GEMMAIZEH	2	AABADIYEH	1	DBAYEH	3	DEIR EL QAMAR	3	DARAAOUN	1	AAEBY	1
GEITAWI	1	DHOOR AABADIYEH	1	DEIR AAOUKAR	6	SEMQANIYEH	1	AAZRA OUEL AAZR	1	MAJDEL BAANA	9
RMEL	7	RAS MATN	3	MANSOURIYEH (MATN)	9	BCHETFINE	1	BIZHEL	1	SAOUFAR	3
ACHRAFIYEH	35	CHOUIT	1	FANAR	4	MAZRAAT DOUAIR	1	YAHCHOUCH	1	AAZZOUNIYEH	1
AADLYEH	1	JAMHOUR AARAIIYA	1	AIN SAADEH	6	KFAR HIM	4	ZAITOUN	1	MAZRAAT EN NAHR	1
SIQOUI	1	HAMMANA	7	ROUMIEH	2	MGHAYREH	1	AACHOOUT	1	AIN DARA	1
OTHER	42	BTEKHNAV	1	BQENNAYA	1	AIN ZHALTA	2	FAYTROUN	3	OTHER	20
Jbeil	65	QORNAYEL	4	BSALIM	7	BAAQLINE	1	KFAR DIBIANE	1	Minieh Denieh	28
Jbeil	4	BZEBDINE	1	MTAYLEB	1	OUADI BNEHLAY	1	FARAYA	2	BEDDAOUI	4
MASTITA	4	KFAR SELOUANE	1	RABIYEH	2	MOUKHTARA	1	OTHER	3	MINIEH	9
BLAT (JBAYL)	4	OTHER	6	BEIT KKKO	2	BOTMEH	1	Akar	97	SIR ED DANNIYEH	1
EDDEH (JBAYL)	2	Zgharta	64	QORNET CHEHOUANE	2	AIN QANI	2	HALBA	5	AASSOUN	1
AAACHIT	8	ZGHARTA	12	RABOUEH	3	BEQAATA	4	CHEIKH MOHAMMAD	3	TARANE	1
HALATE	2	KFAR DLAQOUS	3	BEIT ECH CHAAR	6	NIHA (CHOUF)	1	MINYARA	7	HAQL EL AAZIMEH	1
FIDAR	1	RACHAAINE	4	DIK MEHDI	1	BAADARANE	1	HAYZOUQ	1	MRAH ES SRAYJ	1
HOSRAYEL	1	QARAH BACH	1	AIN AAR	1	AAMMATOUR	1	BQERZLA	6	KFAR HABOU	3
EHMEJ	22	KFAR HATA	3	MAZRAAT YACHOUAA	7	KHALOUNIYEH	1	BEZBINA	2	MARKEBTA	2
ADONIS (JBAYL)	1	HARF (ARDEH)	2	ZAKRIT	3	MAZRAA (CHOUF)	2	AAKKAR EL AATIQA	2	QARNE	1
BRAYJ (JBAYL)	2	ASNOUN	1	BIKFAYA	4	KFAR NABRAKH	2	HAYSSA	1	BAKHAOOUN	4
BINTAAEL	1	MEJDLAYA	7	MAR BOUTROS	6	JBAA (CHOUF)	2	MASSAAOUDIYEH	1	Zahle	107
HBALINE	2	HARET EL FAOUAR	1	QNAVTRA (MATN)	1	BATER	1	TALL MEAAYANE	1	ZAHLEH ER RASSIYEH	4
HBOUB	2	AALMA	1	MAYASSEH	1	BAROUK	2	TALL BIREH	1	EL MAALLAQA	4
HSARAT	4	AAQABEH (AALMA)	2	AIN KHARROUBEH	2	OTHER	4	AAMARA (AAKKAR)	1	KARAK NOUH	4
DMALSA	1	KFAR ZEINA	2	HIMLAYA	1	Baalback	86	CHEIKH ZENNAD	1	SAYDET EN NAJAT	1
TARTIJ	1	BSEBAAL	1	AIN AALAQ	1	BAALBEK	19	BEBNINE	6	HAOUCH EL OUMARA	3
OTHER	3	BNESHAAI	1	AATCHANEH	1	RAS EL AIN	1	MHAMMARA	1	ZAHLEH ARADI	4
Tripoli	59	RAS KIFA	1	DEIR CHAMRA	1	DOURIS	3	NAHR EL BARED	2	FOURZOL	1
TRABLOUS EZEITOUN	11	EHDEN	3	QORNET HAMRA	1	IAAT	2	AABDEH	1	HAZERTA	3
TRABLOUS ET TALL	4	MAZRAAT ET TEFFAH	1	BROUMMANA	7	MAQNEH	2	BERQAYEL	5	ABLAH	1
EL QOUBBEH	8	AYTOU	2	QENNABET BRUMANA	1	SAAIDEH	1	DINBOU	1	KSARA	8
EZ ZAHRIYEH	3	MIZIARA	1	MAR CHAAYA	1	KFAR DANE	3	BEIT AYOUB	1	CHTAURA	1
ET TABBANEH	1	SERAAAL	1	BAABDAT	2	HADATH (BAALBEK)	3	QARQAF	2	JALALA	1
TRABLOUS JARDINS	6	SEBAAL (ZGHARTA)	1	BEIT MERI	6	RAS BAALBEK	2	JDAIDET EL QAYTEAA	3	MAKSEH	1
MINA	6	AACHACH	4	MONTEVERDI	2	FEKEHEH	3	QORNEH (AAKKAR)	3	TAALABAYA	9
QALAMOUN	6	HAILANE	1	DAHR ES SOUJANE	4	JDAIDET FEKEHEH	1	FNAYDEQ	2	JDITA	2
OTHER	14	MAZRAAT HRAIQESS	1	MTAIN	1	NABI OSMANE	3	RABBEH	1	TAANAYEL	2
Koura	23	OTHER	7	KHINCHARA	3	LABOUEH	2	OUADI EJ JAMOUS	1	SAADNAYEL	2
KOUSBA	1	Batroun	14	AINTOURA	2	HARBATA	1	SINDIANET MAJDEL	1	QABB ELIAS	5
QALHAT	1	BATROUN	3	DHOOR ECH CHOUEIR	2	HAY EL MATHANEH	1	BIREH (	4	BOUAREJ	1
DEDEH	2	KFAR AABIDA	2	CHOUJAYA	1	NABHA MEHFARA	1	KHIRBET DAOUD	1	BARR ELIAS	6
ENFEH	4	CHIKKA	4	BASKINTA	2	RASM EL HADETH	1	DIBBACHYA	1	MAJDEL AANJAR	12
DAHR EL AIN	7	GHOUMA	1	OTHER	9	YOUNINE	2	MACHTA HAMMOUD	1	MASNAA	1
BARSA	3	KFAR HATNA	1	West Bekaa	51	DEIR EL AHMAR	1	CHADRA	1	RIYAQ	8
NAKLEH	1	AABRINE	1	MACHGHARA	9	BEDNAYEL	3	MACHTA HASSAN	3	AALI EN NAHRI	5
MTAOUILEH	2	RAS NAHHACH	1	BAB MAREAA	1	QSARNABA	6	SFINET ED DRAIB	1	DEIR EL GHAZAL	1
OTHER	2	OTHER	1	LOUSSIA	1	TEMNINE FAOQA	1	CHARBILA	1	QOUSSAYA	1
Saida	59	Hermel	29	KHIRBET QANAFAR	2	BEIT CHAMA	1	TLEIL	1	RAAIT	2
SAIDA EL QADIMEH	3	HERMEL	7	AANA	1	HAOUCH ER RAFQA	3	AAIDAMOUN	1	TERBOL (ZAHLEH)	1
SAIDA ES SARAYA	1	HERMEL ED DAIAA	1	MANSOURA	2	TEMNINE ET TAHTA	1	AAIDAMOUN	1	DALHAMIEYEH	1
HLALIYEH (SAIDA)	2	KOUAKH	2	AAMMIQ	1	CHMISTAR	3	QBAYIAT (AAKKAR)	1	KFAR ZABAD	1
HARET SAIDA	2	SAHLAT EL MAY	3	MAYDOUN	1	TARAYA	1	OUADI KHALED	2	OTHER	11
AIN EL HELOUEH	1	QASR (HERMEL)	8	JOUBB JANNINE	1	TALIA	1	AKROUM	3	Rachaya	24
SALHIYEH (SAIDA)	1	RAS BAALBEK GHARBI	1	LALA	2	KHODR (BAALBEK)	1	OTHER	13	RACHAIYA EL OUADI	4
MAJDELYOUN	1	OTHER	7	KAMED EL LAOUZ	1	NABI CHIT	1	Bcharehh	7	RACHAIYA EL FAOUQA	2
AABRA	3	Sour	54	TALL ZNOUB	1	BRITAL	3	BCHARREH	1	AAHYA	2
QRAYIYEH (SAIDA)	1	SOUR	9	GHAZZEH	3	KHREIBEH	1	AABDINE	1	DAHR EL AHMAR	1
GHAZIEH	1	JALL EL BAHR	2	SOULTAN YAAQOUB	1	MAZRA BET MCHEK	1	QNAI	1	KAOUKABA	1
MAGHDOUCHEH	1	SOUR ER RACHIDIYEH	1	QARAAOUN	5	CHLIFA	1	HADCHIT	4	YANTA	1
KHARAYEB (SAIDA)	1	SOUR MAACHOUQ	1	MANARA	3	OTHER	6	Bint Jbeil	15	DEIR EL AACHAYER	3
AADLOUN	1	BORJ ECH CHEMAI	2	HAOUCH EL HARIMEH	1	Jezzine	2	BENT JBAYL	1	AAHTA EL FOUKHAR	3
INSARIYEH	1	SMAIYEH	2	SAOUIRI	1	JEZZINE	1	MAROUN ER RAS	1	OTHER	7
BABLIYEH	1	AAYTIT	1	SOHMOR	3	KARKHA	1	AIN EBEL	1	Hasbaya	13
GHASSANIYEH	2	BAFLAY	1	MARJ	4	Nabatieh	40	AAYTAROUN	1	HASBAIYA	2
SARAFAND	2	BARICH	1	OTHER	7	NABATIYEH TAHTA	5	TIBNINE	1	AIN QINIA	1
QAAQAIYE SNAOBAR	3	MAARAKEH	4	Marjeyoun	10	NABATIYEH SARAY	1	BARAACHIT	1	MIMESS	5
KAOUTHARIYET SIYAD	17	JENNATA	1	MARIAAYOUN	1	NABATIYEH FAOUQA	2	CHAQRA	2	MERI	1

All reports and related decisions can be found at: <http://drm.pcm.gov.lb>

Or social media @DRM\_Lebanon

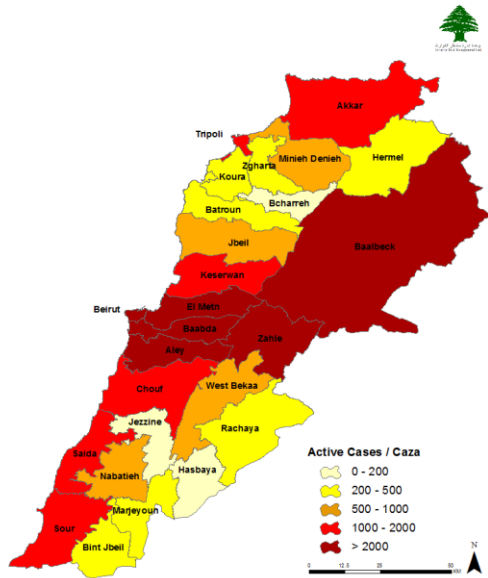
SAKSAKIYEH	2	AIN BAAL	1	JDAIDEH	1	KFAR ROUMMANE	3	DEIR NTAR	1	KFAYR EZ ZAIT	1
MEROUANIYEH	3	BOURGHELIYEH	2	QLAIAA	1	HABBOUCH	3	KOUNINE	1	OTHER	3
NAJJARIYEH	1	BAZOURIYEH	1	KFAR KILA	2	KFAR TIBNIT	1	KAFRA	1		
AARAB EJ JALL	1	HANAOUAY	1	TAYBEH	1	KFOUR	1	YATER	1	OTHER	84
AANQOUN	2	DEIR QANOUN NAHR	2	TALLOUSSA	2	HOUMINE TAHTA	2	DEBL	1		
OTHER	5	SRIFA	2	MARKABA	1	HAROUF	3	BEIT LIF	2		
		HALLOUSSIYEH	1	MEISS EJ JABAL	1	DOUAIR	3				
		BEDIAS	1			JIBCHIT	5				
		AABBASSIYEH (SOUR)	4			AABBA	2				
		JBAL EL BOTM	1			INSAR	2				
		ZEBQINE	1			KFAR SIR	2				
		QLAILEH (SOUR)	1			SIR EL GHARBIYEH	3				
		MAJDEL ZOUN	3			OTHER	2				
		OTHER	8								

All reports and related decisions can be found at: <http://drm.pcm.gov.lb>

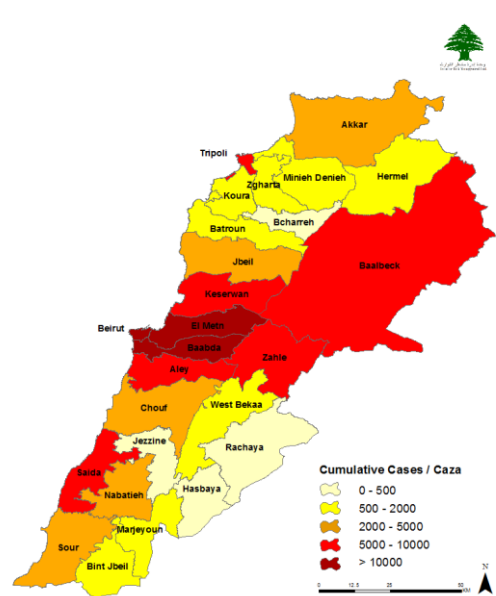
Or social media @DRM\_Lebanon

## Distribution of Active and Cumulative Cases

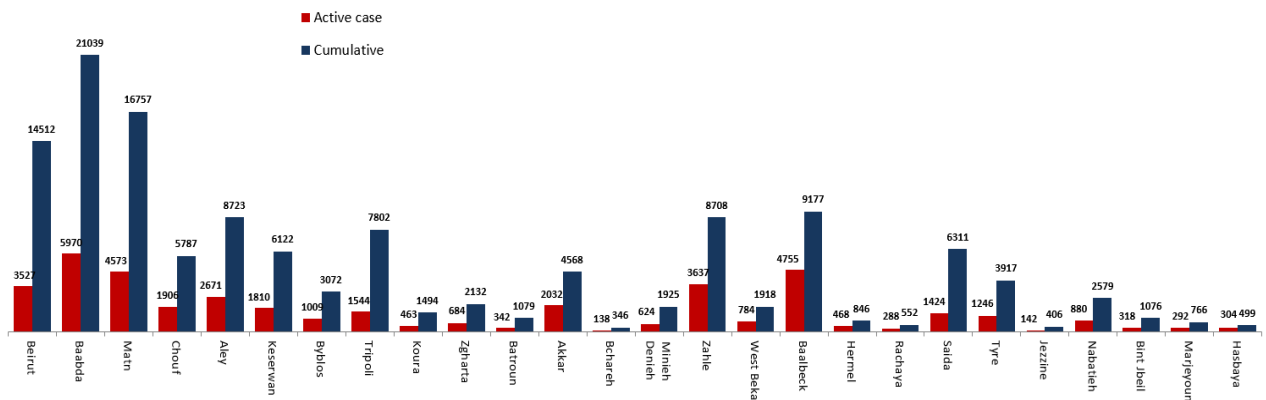
### Distribution of Active Cases



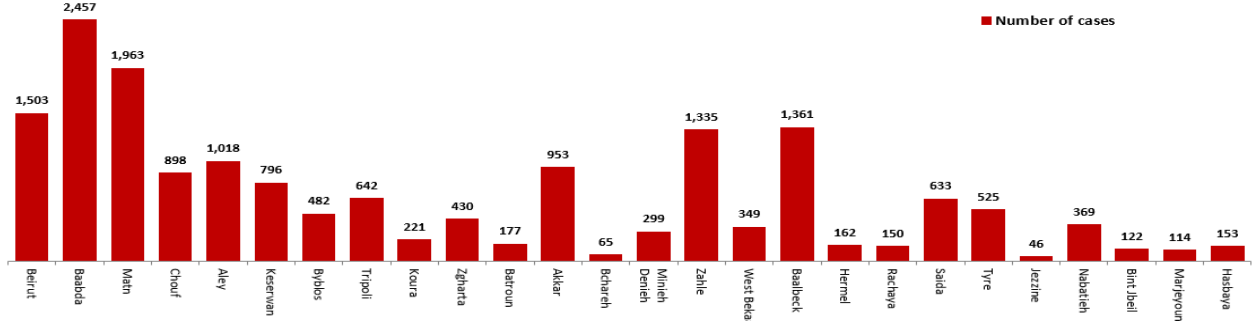
### Distribution of Cumulative Cases



### Number of Cases by Location



### Number of cumulative cases for the last 14 days



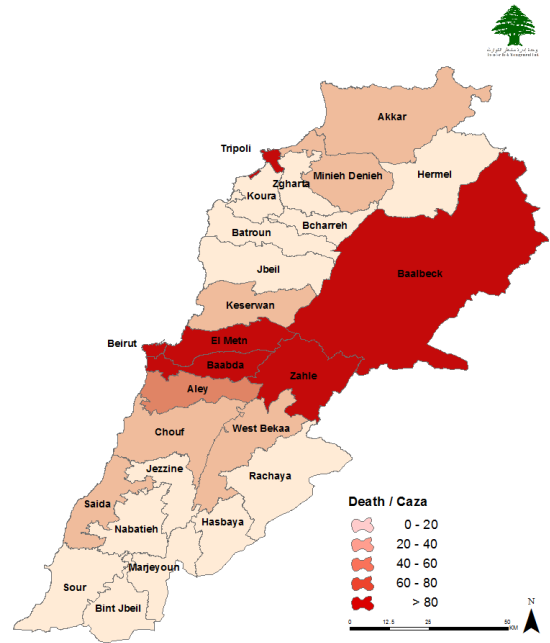
All reports and related decisions can be found at: <http://drm.pcm.gov.lb>

Or social media @DRM\_Lebanon

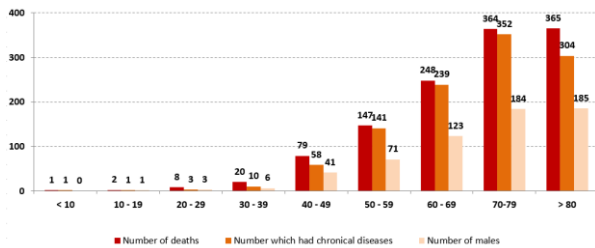
## Distribution of Death Cases

### Distribution of deaths during the past 24 hours

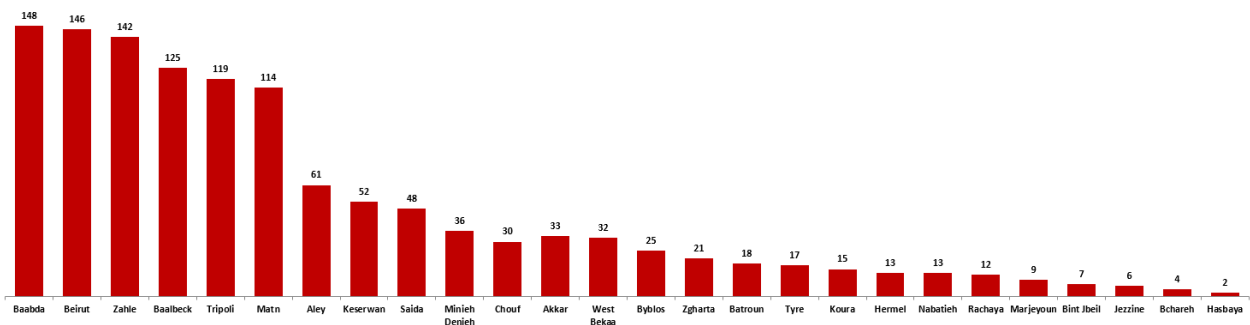
Hospital	Residence	Gender	Age	Chronic
Dar El Amal	Baalback	Male	78	Yes
Geatawi	Tripoli	Male	35	No
Sacre Couer	Aley	Male	86	Yes
Berri Gov	Nabatieh	Male	60	No
Ftough Keserwan	Aley	Male	88	Yes
Ftough Keserwan	Keserwan	Male	90	Yes
El Raii	Saida	Male	83	Yes
Baalback Gov.	Baalback	Male	73	No
Hamed Farhat	Rachaya	Female	75	No
Al Mayas	Zahle	Male	77	Yes
Manara Doctors	Rachaya	Male	87	Yes
Riyak	Zahle	Female	77	Yes
Tripoli Gov.	Tripoli	Male	70	Yes
Minieh Gov.	Akkar	Male	90	No



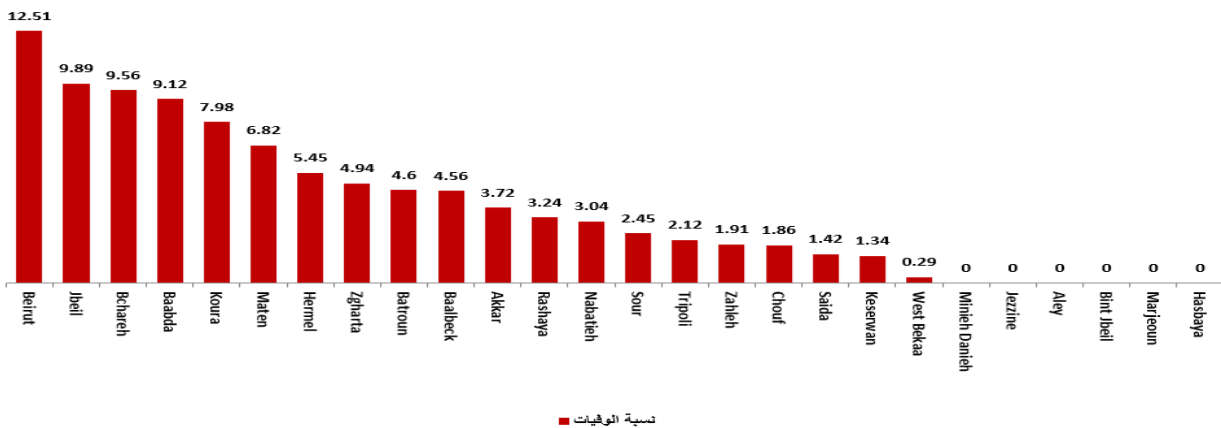
### Distribution of deaths by Age Groups



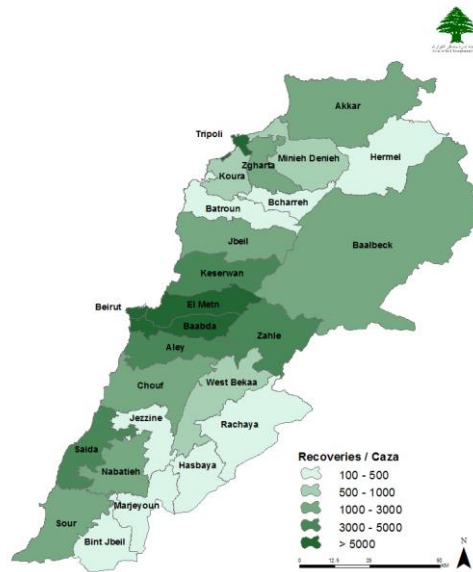
### Distribution of deaths by Governorates



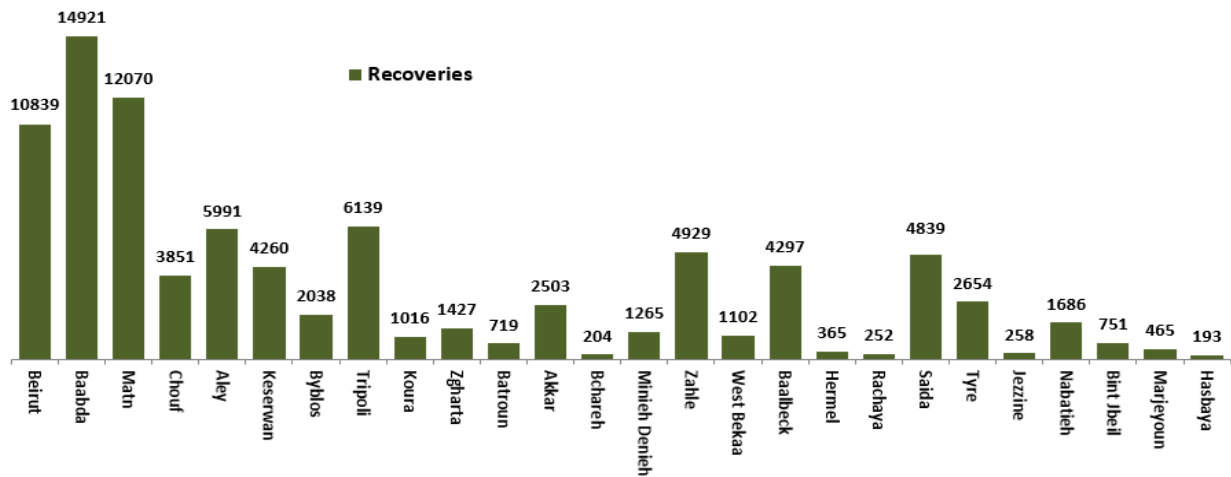
### Distribution of mortality rate for the last 14 days



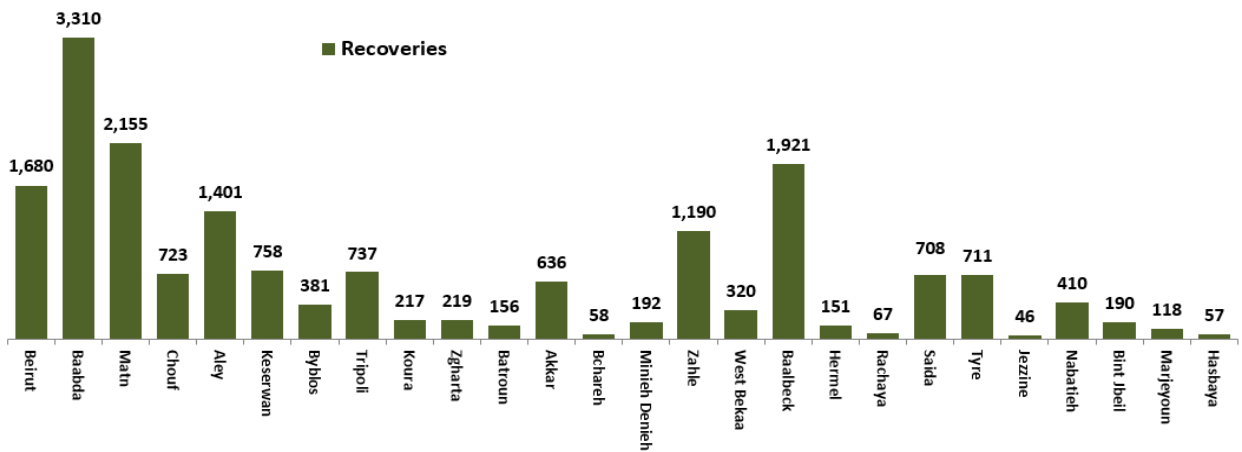
## Distribution of Recoveries



## Distribution of Recoveries per Casa



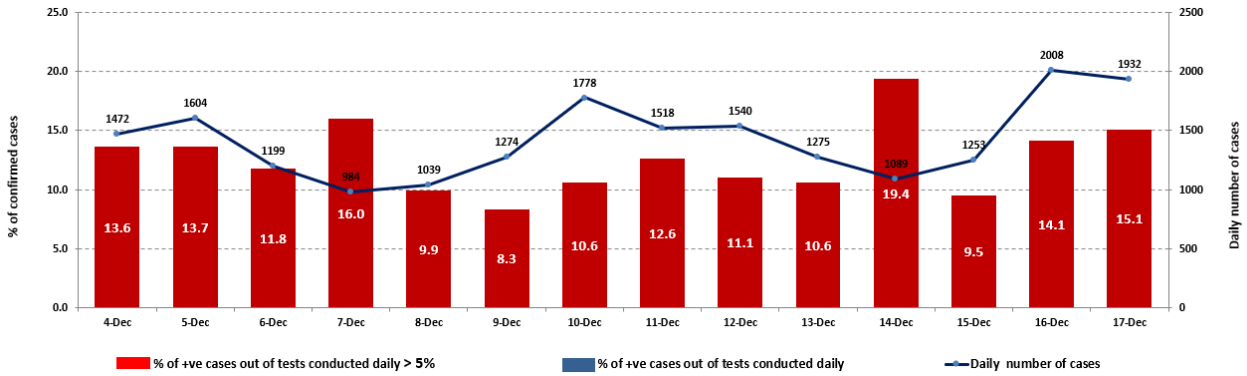
## Distribution of Recoveries per Casa in the last 14 days



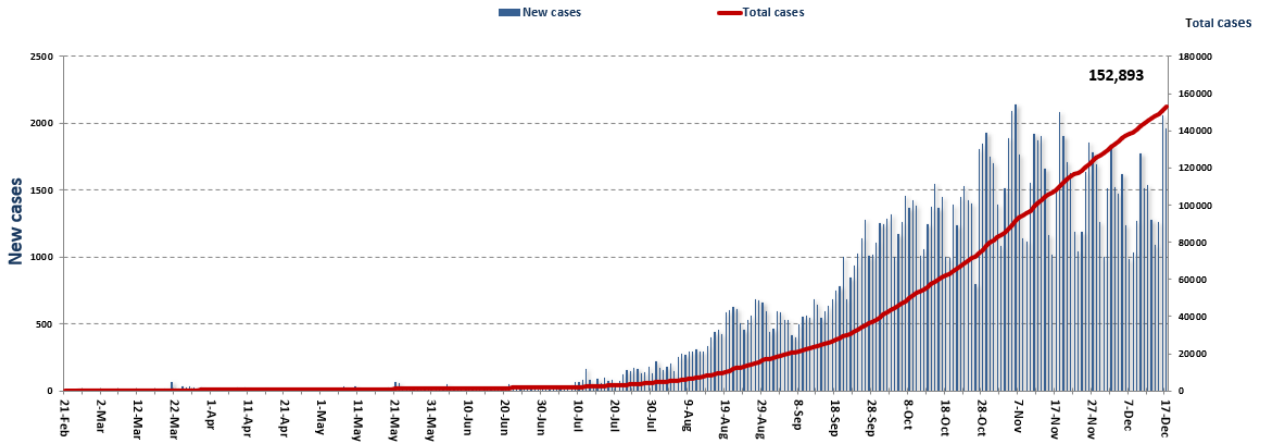
All reports and related decisions can be found at: <http://drm.pcm.gov.lb>

Or social media @DRM\_Lebanon

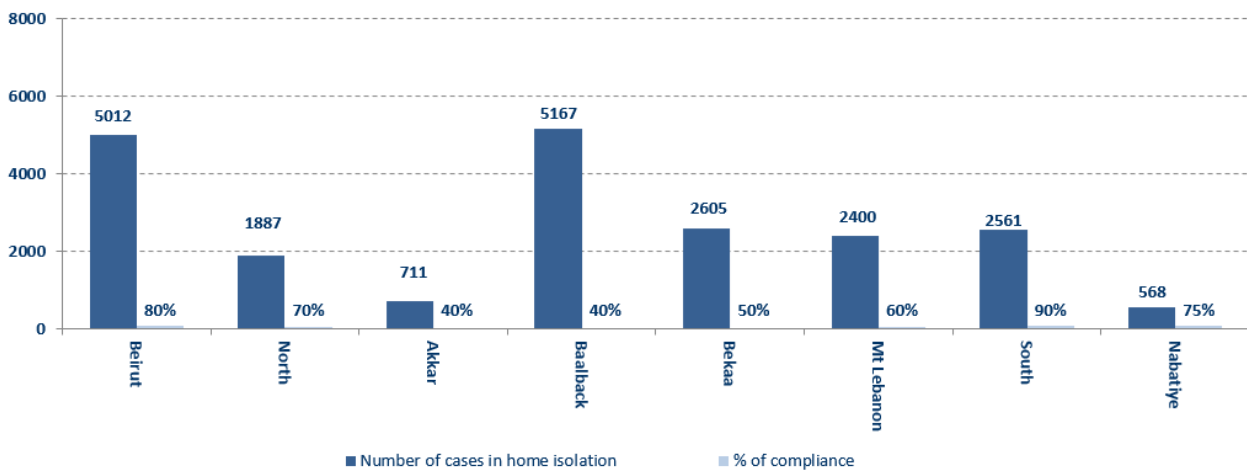
## The percentage of positive cases out of the number of daily tests (04 Dec– 17 Dec,2020)



## Cumulative cases per day



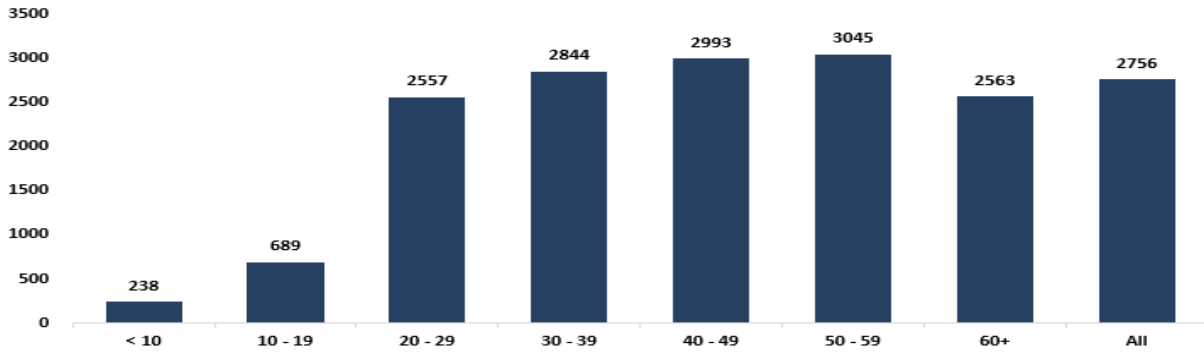
## Number of individuals in home isolation and percentage of commitment to isolation



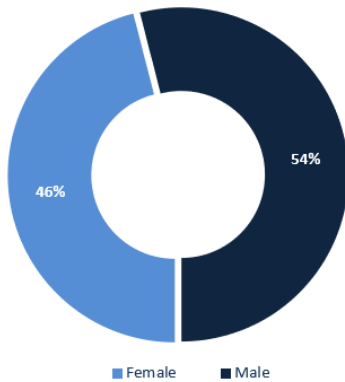
All reports and related decisions can be found at: <http://drm.pcm.gov.lb>

Or social media @DRM\_Lebanon

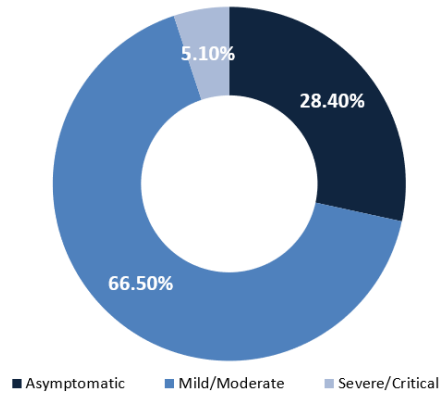
## Age-Specific Cumulative Incidence rate (/100000)



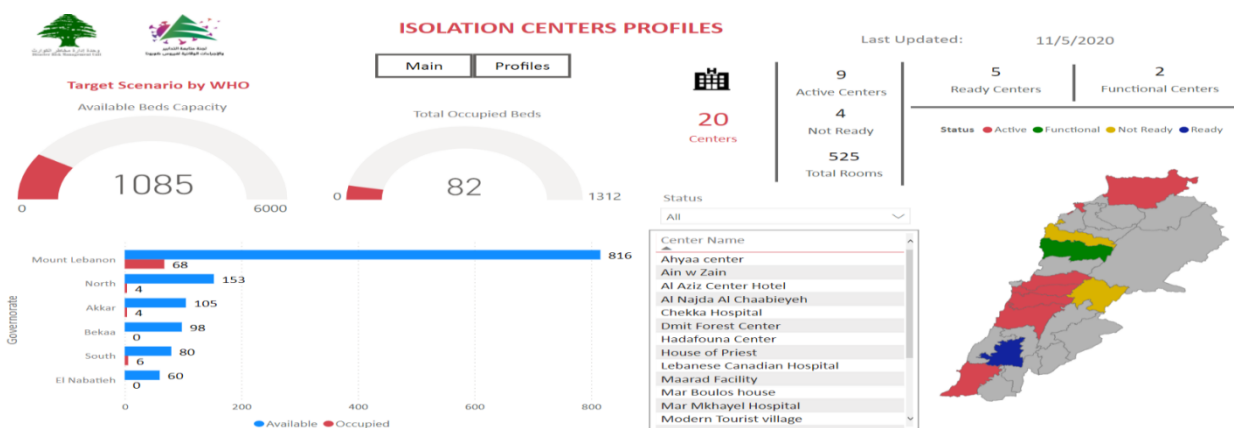
## Distribution of cases by gender



## Distribution of cases by Status



## Occupancy rate of isolation centers for cases infected with Corona virus



For more information about the isolation centers' distribution and the percentage of their occupancy, enter the following link: <http://bit.ly/DRM-IsolationCentersProfiles>

All reports and related decisions can be found at: <http://drm.pcm.gov.lb>

Or social media @DRM\_Lebanon



## Decisions and actions taken – 12/17/2020

### Ministry of Public Health

- A meeting was held under the patronage of the Minister of Health to discuss the coverage of private insurance companies the hospitalization of Corona patients, and the unified contract protocol with laboratories.
- The Ministry of Health announced that the route of the additional field hospitals started according to the urgent need in Dennyeh and Tripoli in the North and Tyre and Juwaya in the South, and in parallel, additional Corona departments are being prepared in governmental hospitals: Sir Al-Danniyah, Rashaya, Hasbaya, Jezzine, and Siblin.
- The Ministry of Public Health reported that PCR tests were completed for flights that arrived to Beirut and were conducted at the airport on December 13 and 14, 2020, and the results showed that there were nineteen (19) positive cases distributed over the following flights:

Destination	Cases	Flight Num	Company
<b>December 13 2020</b>			
Cairo	3	711	Egyptian
Istanbul	1	266	MEA
Adana	1	7836	Turkish
Istanbul	1	268	MEA
Istanbul	1	826	Turkish
Baghdad	1	1311	Iraq
<b>December 14 2020</b>			
Istanbul	1	828	Turkish
Cairo	1	713	Egyptian
Dawha	1	416	Qatar Airways
Chariga	1	385	G9
Cairo	3	711	Egyptian
Istanbul	1	268	MEA
Istanbul	1	826	Turkish
Cairo	1	307	MEA
Demascus	1	181	RB
	<b>19</b>		

### Lebanese Red Cross

Cases transferred to the hospital	10,206 (67 New)	Ambulance centers	48	Number of additional ambulance centers ready to respond	59,943	Number of PCR tests transferred to laboratories	240,171
Number of being benefitting from awareness sessions	116,576 (401 New)	total number of respondents	8,889	Number of trained paramedics	1,498	Number of volunteers trained to transfer PCR tests	166
Number of trained managers for isolation centers	8,847	total LRC volunteers for covid 19	550	Number of university volunteers trained to conduct awareness sessions	310	The number of university volunteers trained to follow up on prevention measures in companies and institutions	967
Number of prisons that has been disinfected	1,012	Total distributed posters, brochures, and flyers on covid19 prevention	1,261,982	Number of distributed equipment	263,876	Number of beneficiaries from educational electronic platforms COVID-19	4,789 (3 New)

All reports and related decisions can be found at: <http://drm.pcm.gov.lb>

Or social media @DRM\_Lebanon

## Lebanese Army Forces

- The army units continue to distribute social aid (400,000 Lebanese pounds) to families with limited income in all Lebanese territories.
- Distributing food aid in various Lebanese regions through the CIMIC Office.
- Establishing circumstantial barriers in various regions and supporting the Internal Security Forces in implementing the general closure decision in the country

## General Directorate of Internal Security Forces

- The Internal Security Forces in all governorates and regional directorates organized patrols and circumstantial checkpoints
- The minutes that were written against the violators of the decisions of the general mobilization during the past 24 hours were distributed as follows:

The number of seizure records during the past 24 hours					The total number of records since 03/08/2020		
Written records of cars that violate curfew decision					0		
Written records of violating institutions					54	Beirut	37,877
Written records of persons violating the decision to wear a mask					66	Mount Leb	41,440
<b>Total</b>					<b>120</b>	Beqaa	16,294
						North	13,456
Beirut	Mount Leb	Beqaa	North	South		South	13,182
65	55	0	0	0		<b>Total</b>	<b>122,249</b>

## General Directorate of State Security

- Reporting the number of new positive cases in the various governorates and districts, and the cases in home quarantine.
- Follow up the procedures performed by medical teams at the arrival's examination centers at the airport and at border crossings.
- The report of a death in a woman in the Batroun district due to the Corona virus.
- Reporting on the decision of the North Lebanon Governor to isolate the town of Kfardelkous for a period of one week, starting December 10, 2020

## General Directorate of General Security

- Carrying out patrols in the various governorates to follow up on the implementation of the general mobilization decision and alerting citizens to abide by preventive measures.
- Reporting that a large number of commercial establishments did not adhere to the preventive measures.
- Reporting the cumulative number of positive cases in the districts.
- Notification of the percentage of compliance with the general mobilization decision in the governorates, which came as follows within the past 24 hours:

Beirut	South	North	Akkar	Beqaa	Nabatiyeh	Baalbek Hermel	Mount Leb
75%	55%	40%	60%	55%	60%	50%	55%

## Ministry of Public Works and Transportation

### Beirut RaficHarriri International Airport:

Departing Flights		Arriving Flights	
Number of Flights	41	Number of Flights	43
Number of Departing Individuals	3,483	Number of Arrivals	4,576

### Ports:

Port	Left			Entered		
	Export	Direction	#	Import	Direction	#
Tripoli	Fuel oil	Jounieh	1	Containers	Turkey	1
<b>Total</b>			<b>1</b>			<b>1</b>

## General Decisions / Announcements

On 12/16/2020, the Committee for the Follow-up of Preventive Measures and Measures of Coronavirus held a meeting headed by the Secretary-General of the Supreme Defense Council and an assessment of the reality of the epidemic spread in light of the current economic reality. According to the available data, the rate of increase in Coronavirus infections will increase by 25% due to the existence of Various social events, and accordingly, these are the most prominent recommendations issued:

- Amending working hours in the tourism sector, with an emphasis on commitment to preventive measures
- The Ministry of Information should organize targeted media campaigns that clarify the necessity of adhering to preventive measures
- The epidemiological surveillance program at the Ministry of Public Health shall deposit the committee daily a list of the dead by Corona virus
- The Ministry of Health should present the mechanism for receiving, storing, distributing and using the vaccine to the Committee for Follow-up of Preventive Measures and Procedures for Coronavirus
- The Ministry of Tourism announced that whoever wants to hold a party, event or a festive gathering must fill out the form at the following link: [eventregistry.net](http://eventregistry.net), in line with the decisions of the Ministerial Committee.

- In cooperation with the Committee for the Follow-up of Coronavirus Preventive Measures and Procedures and the Lebanese Red Cross, the Ministry of Education launched an interactive electronic platform to monitor the development of Coronavirus infections in public and private schools and distribute them to districts. The minister will rely on this platform to take the appropriate decision regarding the opening or closing of schools.

On 12/13/2020, the Ministry of Interior and Municipalities issued Resolution No. 1556 regarding the amendment of preventive measures and measures to confront the Corona epidemic, as it begins to be applied from the morning of 12/14/2020 until the morning of 12/21/2020, and the most prominent of what was mentioned in it:

- Determine the times of entry and entry into the streets between 23:30 until 5:00 in the next morning.
- Transport instructions for private and public vehicles and trucks.
- Opening times for the public sector and the economic and commercial sectors in all Lebanese regions.
- Allowing the holding of various social events under specific conditions, in addition to coordinating with the religious authorities in terms of organizing and determining the number of worshippers in places of worship.
- Setting specific conditions that allow restaurants, cabarets and bars to operate.
- Limiting the decision to open or close educational institutions and administrative units in all towns and villages to the Minister of Education and Higher Education.
- General provisions related to the numbers of people traveling by specific public and private means of transport, public prevention and safety measures, mandatory wearing of a mask, personal hygiene and especially hand washing, permanent sterilization and not overcrowding while maintaining distances between people and organizing roles on payment boxes.
- Exclusions related to movement and curfews (military personnel, health sector employees, workers in the diplomatic corps, media professionals, port employees, maritime agencies and the airport, in addition to the Electricity of Lebanon and Kadisha, water establishments and their service providers, mill workers, sweeping companies, waste collection and transportation, military vehicles, civil defense mechanisms, firefighting, municipal police and the cross) The Lebanese Red Army, ambulances and medical apparatus, the diplomatic corps, the United Nations, the media and the media, the lifts and the vehicles designated for transporting and towing cars, the vehicles designated for people with special needs and those with a card from the Ministry of Social Affairs, arrivals and departures, and those who take them to and from the airport, provided they have a copy of the travel ticket.
- The mandates of governors, mayors and district officials in implementing the decision.
- The units of the General Directorate of Internal Security are strict in implementing this decision.

- Note: The full decision can be found at: <http://drm.pcm.gov.lb>

## Examples of lack of adherence to safety measures

- Violations of the Ministry of Interior Decision No. 1432: promenade on the sea corniche, violations of authorized and single motor vehicle traffic, and violations of commercial establishments and stores that did not adhere to the decision.
- Failure to comply with the preventive measures and procedures required in a number of stores and markets (putting on a mask or face mask, sterilizing hands, maintaining a safe distance).
- Failure of those in contact with confirmed cases to adhere to home isolation procedures until the results of the laboratory tests are issued.

**If you feel any symptoms, directly call the hotline of the Ministry of Public Health: 1214 or 01/59445**

All reports and related decisions can be found at: <http://drm.pcm.gov.lb>

Or social media @DRM\_Lebanon

**Laboratories that did not comply with the procedures approved by the MoPH About the information required to be recorded for infected cases within the past 24 hours**

<b>Laboratories that did not specify the Governorate</b>	
<b>Laboratory/Hospitals</b>	<b>Cases</b>
BDH505-Rafic Hariri University hospital	33
BDL003-Laboratoire Inovie / Fayyadieh	24
BDL006 - Beirut International Airport	7
BDL002-Hadi Laboratory/ Haret Hreik	5
BRH630-Hospital Geitawi	3
BRH639-Hospital Saint Georges Orthodoxe	3
BRL009 - Fontana Laboratories	3
BRH636-Hospital LAU Medical Center / Rizk	2
SRL001 - Mashrek Medical Diagnostic Center	2
BDH558-Hospital Saint Georges Hadath	1
ZHH225-Hospital Mayas / Zahleh	1

<b>Number of positive cases without specifying the place of residence</b>	
<b>Laboratory/Hospitals</b>	<b>Cases</b>
BDH505-Rafic Hariri University hospital	33
BDL003-Laboratoire Inovie / Fayyadieh	24
BDL006 - Beirut International Airport	7
BDL002-Hadi Laboratory/ Haret Hreik	5
BRH630-Hospital Geitawi	3
BRH639-Hospital Saint Georges Orthodoxe	3
BRL009 - Fontana Laboratories	3
BRH636-Hospital LAU Medical Center / Rizk	2
SRL001 - Mashrek Medical Diagnostic Center	2
BDH558-Hospital Saint Georges Hadath	1
ZHH225-Hospital Mayas / Zahleh	1

<b>Number of positive cases without a phone number</b>	
<b>Laboratory/Hospitals</b>	<b>Cases</b>
BDL002-Hadi Laboratory/ Haret Hreik	4
TRH130-Hospital Nini	3
BDH505-Rafic Hariri University hospital	1
BDH558-Hospital Saint Georges Hadath	1
BDL003-Laboratoire Inovie / Fayyadieh	1
TRL001-Lebanese University Faculty of Public	1

## A list of the laboratories accredited by the MoPH to conduct PCR tests

### Governmental Labs

المختبر	الموقع
RHUH	بيروت مستشفى رفيق الحريري الجامعي
Halba Governmental	حلبا مستشفى حلبا الحكومي
Tripoli Governmental	طرابلس مستشفى طرابلس الحكومي
Batroun Governmental	البترون مستشفى البترون الحكومي
Fetouh Keserwan	كسروان مستشفى فتوح كسروان الحكومي (البوار)
Nabih Berri Hosp	النبطية مستشفى نبيه برّي الحكومي الجامعي
Tebnine Governmental	تبنين مستشفى تبنين الحكومي
BintJbeil Governmental	بنت جبيل مستشفى بنت جبيل الحكومي
Baalback Governmental	بعلبك مستشفى بعلبك الحكومي
Elias Herrawi Governmental	زحلة مستشفى الرئيس اليااس الهراوي الحكومي

### Private Labs

المختبر	الموقع
AUBMC	بيروت مستشفى الجامعة الأميركية
Hôtel Dieu de France	بيروت مستشفى أو تيل ديو الجامعي
Laboratoires Rodolphe Mérieux (Université Saint-Joseph)	بيروت مختبرات رودولف ميرييو (الجامعة اليسوعية – المتحف)
George-Saint UMC Hospital	بيروت مستشفى القديس جاورجيوس الجامعي
General Makassed Hospital	بيروت مستشفى المقاصد
LAU Medical Center - Rizk Hospital	بيروت مستشفى رزق الجامعي
CHU - Geitawi Libanais Hospital	بيروت مستشفى الليباني الجعيتاوي الجامعي
Hôpital Notre-Dame du Rosaire	بيروت مستشفى الوردية
Doctors' Center	بيروت مختبر مركز الأطباء
Fontana Laboratories	بيروت مختبر فونتانا (الحمرا)
General Security Laboratories	بيروت مختبر الأمن العام (العديلية)
Ghorra-Jabre Laboratories	الأشرفية مختبرات جبر و غرة
Saint Marc Medical & Diagnostic Center	الأشرفية مختبر السانمارك
Laboratories HML	فرن الشباك مختبرات حداد
Laboratoire Moderne (Modern Lab.- Berjaoui)	الغبيري المختبرات الحديثة
Sahel General Hospital (SGH)	الغبيري مستشفى الساحل
Al Zahraa Hospital	الغبيري مستشفى الزهراء الجامعي
	بئر حسن مركز النقاء الطبي
Al Rassoul Al Aazam Hospital	برج البراجنة مستشفى الرسول الأعظم
Bahman Hospital	حارة حريك مستشفى بهمن
National Diagnostic Services Company (NDSC)	حارة حريك مختبر ناشيونال دياغنوستك سيرفس كومباني
Center Diagnostic Medical	المريجة مختبر الدكتور محمود عثمان - مركز التحاليل الطبية
ADC (Center Diagnostic American)	الجناح مختبر أميريكين دياغنوستك سنتر
Mount Lebanon Hospital	بعيدا مستشفى جبل لبنان
Hadath – George-Saint Hôpital	بعيدا مستشفى السان جورج الحدت
Laboratory Al Hadi	بعيدا مختبر الهادي
INOVIE	بعيدا مختبر Liban-
Sacré - Coeur Hôpital	الحازمية مستشفى قلب يسوع
Clinigene	الحازمية مختبر كلينيغان
Dr. Samir Serhal Hospital	المتن مستشفى سرحال
Life for Trans medical	المتن مختبر ترانس ميديكال فور ليف
	المتن مختبرات سان ميشال للتحاليل الطبية
	المتن مختبر مركز الشرق الأوسط الصحي ش.م.ل
Haroun Hospital	الزلقا مستشفى هارون
Bellevue Medical Center (BMC)	المنصورية مستشفى بلفو
Haykal Albert Hôpital	الكورة مستشفى هيكل

All reports and related decisions can be found at: <http://drm.pcm.gov.lb>

Or social media @DRM\_Lebanon

Centre Hospitalier du Nord (CHN)	مركز الشمال الاستشفائي	زغرتا
Mazloun Hospital	مستشفى المظلوم	طرابلس
Al Mounla Hospital	مستشفى المنلا	طرابلس
Nini Hospital	مستشفى النيني	طرابلس
LMSE	مختبر ميكروبيولوجيا الصحة والبيئة، المعهد العالي للدكتوراه، الجامعة اللبنانية	طرابلس
Secours des Dame-Notre – CHU	مستشفى سيده المعونات الجامعي	جبيل
Boulos & Akiki Lab	مختبر عقيلي وبولس	جبيل
Wakim Centre Médical	مختبر واكيم	جونية
Hospital Wzein Ain	مستشفى عين وزين	الشوف
UMC Hospital Hammoud	مستشفى حمود الجامعي	صيدا
Al Karim Medical Laboratory (KML)	مختبر الكريم	صيدا
Hospital HarbRagheb Sheikh	مستشفى الشيخ راغب حرب	النبطية
SDC (Center Diagnostic Sabbah)	مختبر الصباح	النبطية
Jabal Amel Hospital	مستشفى جبل عامل	صور
Mashrek Diagnostic Center (MDC)	مختبر المشرق	صور
Hospital University Dar Al Amal	مستشفى دار الأمل الجامعي	بعلبك
	مختبرات العناية الطبية	بعلبك
	مختبرات العناية الطبية	اللبوة
Hospital General Khoury	مستشفى خوري	زحلة
MCC (Center Care Medical)	مختبر ميديكال كير سنتر	زحلة

### مختبرات المستشفيات العسكرية

Hôpital Central Militaire	المستشفى العسكري المركزي في بيروت	بيروت
---------------------------	-----------------------------------	-------

### المختبرات المؤهلة لأخذ عينات "المسحات الأنفية" بطريقة "Drive-Thru"

Medical Diagnostic Treatment Center (MDTC)	مختبر ميديكال دياغنوسيك تريمانت سنتر (الحمراء)	بيروت
ALS CIC SAL Med-Lab	مختبر ميد لاب الحمراء – الجفینور	بيروت
Itani Medical Laboratories	مختبرات عيتاني	بيروت
ABC Laboratories	مختبر أ ب سي	الأشرفية
Mouawad Medical Laboratory	مختبرات معوض الطبية	الشيح
Rihan Medical Center	مختبرات الشياح (د. فواد ریحان)	الشيح
Lab Expert	مختبر إكسبرت لاب	المنصورية
LAB Life	مختبر لايف لاب	بعلبك
Rayyak Hospital	مستشفى رياق	رياق