



Lebanon National Operations Room Daily Report on COVID-19

New in the Report:

- New procedures related to all travelers coming to Lebanon.
- An online link to follow up on the number of beds available for people with Coronavirus in hospitals and the occupancy rate during the past 24 hours.
- An online link to monitor the commitment of different sectors to the general mobilization procedures.

Wednesday, September 16, 2020

Report #182

Time Published: 9:30 PM

26,083
Total registered cases
since Feb.21

1,490 **24,593**
Leb Expts Locals

634
New Cases

10 **624**
Leb Expts Locals

650,307
Conducted PCR tests in
labs since Feb.21

10,481
PCR tests conducted
tests for locals in the last
24 hrs (in labs)

1,920
PCR tests conducted
tests in airport in the
past 24 hrs

259
Deaths

7
New Deaths

9,634
Recoveries

796
Cases registered among
medical staff

6
Cases registered among
medical staff in the past
24 hrs

16,190
(Active Cases)

15,764
In home Isolation

0
Mild Cases in the
Past 24 hrs

5
In ICU in the past 24
hrs

426
Currently hospitalized

306
Cumulative Mild Cases

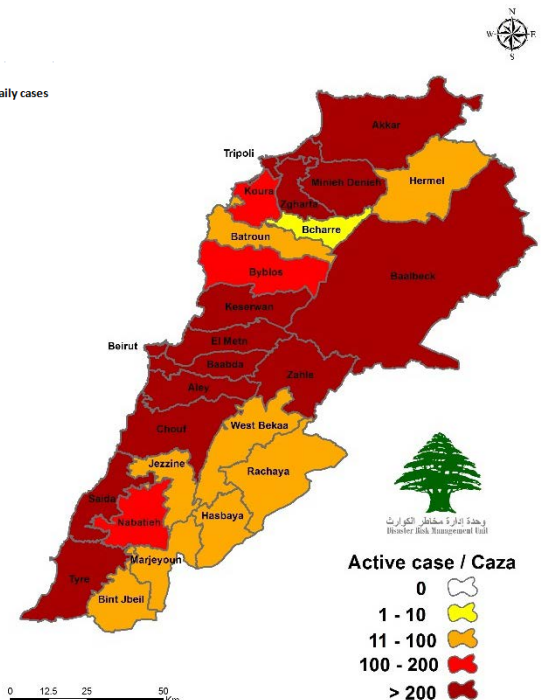
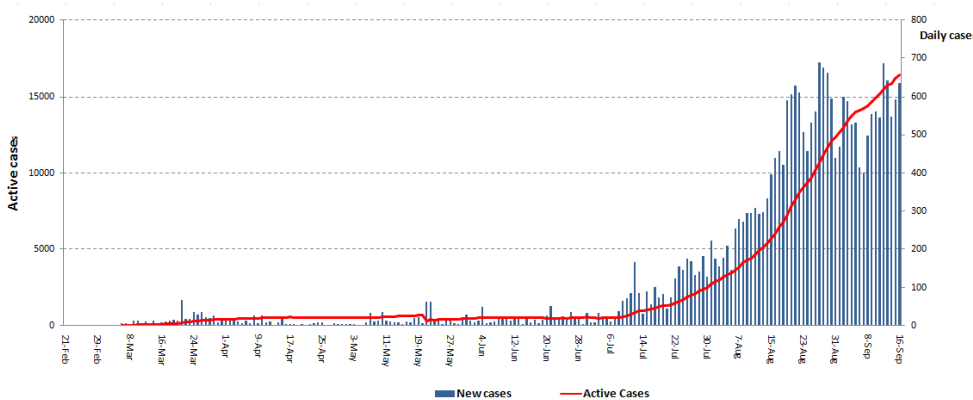
120
Cumulative In ICU

	Lebanon	Internationally
Total registered cases	26,083	29,847,398
Total deaths	259	941,241
Percentage of deaths	0.99%	3.15%
Number of recoveries	9,634	21,635,653

*The Above data was last updated at 10:00 PM

Number of Cases by Location

- 5760 case is Under investigation



Active case / Caza

- 0
- 1 - 10
- 11 - 100
- 100 - 200
- > 200

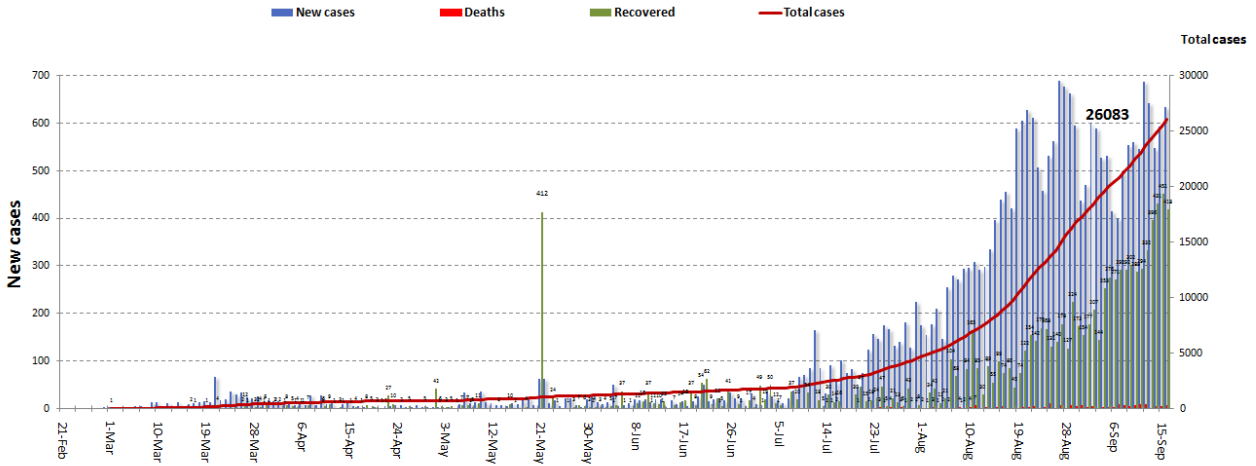
Beirut	Cases
Ras Beirut	1
Qoreitem	1
Hamra	6
Ein El Teeneh	1
Moseitbeh	5
Mar Elias	3
Unesco	1
Zarif	4
Mazraa	7
Borj Abi Haydar	3
El Basta El Fawka	6
Tariq Jdeedeh	6
Ras El Nabeh	5
Bachoura	1
Mar Michael (Nahr)	1
Achrafieh	4
Others	7
Baabda	Cases
Chiah	3
Jnah	2
Ouzai	1
Roueiset El Ballout	1
Hammana	2
Dhour El Abadiah	1
Bir Hassan	3
Ghobeiry	8
Ein El Rimmaneh	2
Furn El Chibbak	1
Haret Hreik	11
Laylaki	4
Borj El barajneh	21
Mrejeh	3
Kfarshima	2
Hazmieh	1
Hadat	13
Madeene El Riadieh	1
Tahweetet El Ghadir	1
Baabda	1
Others	2
Tripoli	Cases
Qebbeh	3
Zehrieh	2
Mina	9
Tripoli	18
Beddawy	2
Zeitoun	2
Zghorta	Cases
Alma	1
Erdeh	1
Ehden	2
Eaal	2
Others	1
Sour	Cases
El Bass	1
Sour	1
Chhour	3
Teir Falasayh	1
Abbasieh	3
Others	2

Matn	Cases
Borj Hammoud	2
Rawda	2
Sin El Fil	6
Doura	2
Bouchrieh	4
Jdeidet El Metn	4
Beit El Chaar	2
Sabtieh	4
Dekwene	7
Jal El Deeb	9
Antelias	4
Naqqash	3
Zalka	9
Dbayeh	1
Mansouriyeh	3
Beit Merry	2
Baabdat	1
Roumieh	2
Ein Saadeh	1
Jouret El Ballout	1
Rabieh	2
Bekfayya	1
Mazraaet Yashouh	2
Zikrit	3
Broumana	1
Deek El Mahdi	1
Sad El Bouchrieh	2
Byaqout	2
Fanar	1
Al Fanar Al Jadeede	1
Bsalim	2
Nabayh	1
Mtayleb	3
Mar Moussa El Douwar	1
Others	1
Marjouyon	Cases
Debbine	1
Khiyam	3
Kfar Kela	1
Bleeda	1
Others	3
Jbeil	Cases
Eddeh	1
Amchit	1
Halat	1
Jedayel	1
Nahr Ibrahim	1
Shamat	1
Zahle	Cases
El Forzol	1
Mar Elias	1
Niha	1
Ksara	2
Saadnayel	1
Qab Elias	3
Majdel Anjar	1
Riyak	1
Terbol	1
Others	6

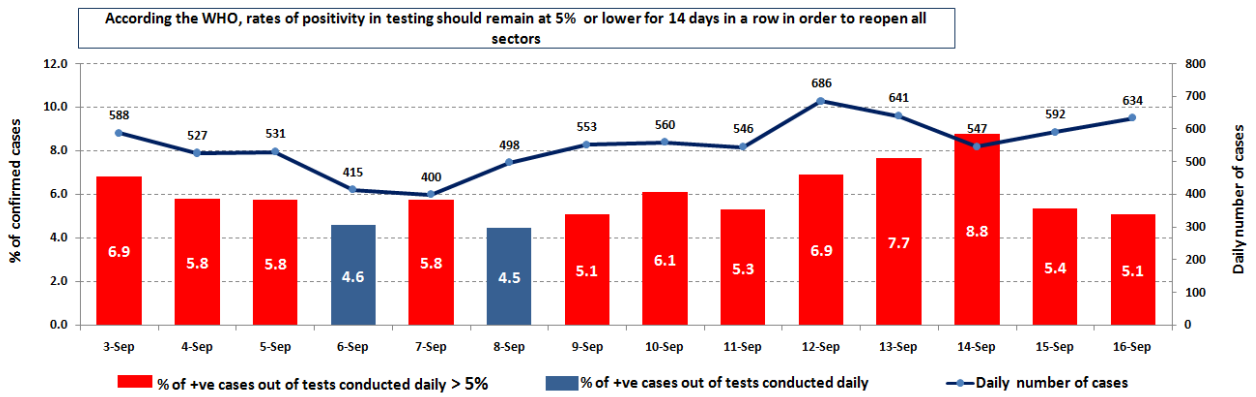
Aleyh	Cases
EL Amrousiyyeh	1
El Oumara	3
Aley	1
Khaldeh	6
Hay El Sillom	8
Aramoun	8
Bchamoun	4
Gabon	1
Others	1
Keserwan	Cases
Kaslik	1
Zouk Michael	2
Zouk Mosbeh	3
Adonis	2
Sahel Alma	1
Kfar Yassine	1
Ajaltoun	1
Sehayle	1
Jeita	1
Kfar Hbab	2
Qleiaat	3
Raasheen	1
Nabatieh	Cases
Zebdeen	1
Kfar Romman	1
Harouf	3
Jebsheet	7
Seer El Gharbieh	1
Shoukeen	11
Deir El Zahrani	2
Douweir	1
Others	5
Jezzine	Cases
Ayshiyyeh	1
Others	1
Menyeh Duniyyeh	Cases
Der Aamar	3
Menyeh	4
Bhannin	1
Hakl El Azeemeh	1
Ezel	1
Others	1
Baalbak	Cases
Saideh	1
Ras Baalbak	1
Doures	1
Nabi Othman	1
Ras Baalbak	1
Tarayya	1
Nabi Sheeth	2
Temnin El Tahta	1
Ein El Bnayyeh	1
Brital	1
Others	3
Hermel	Cases
Hermel	1
Others	4

Bint Jbel	Cases
Aynata	1
Rmeish	1
Ayta El Shaab	1
Jmeijmeih	1
Shaqa	4
Khirbet Silim	1
Chouf	Cases
Naameh	1
Semqaniye	1
Barja	4
Chehim	3
Damour	2
Daraya	1
Siblin	1
Jiyeh	1
Wady El Zayneh	1
Baqaata	1
Niha	2
Koura	Cases
Amyoun	2
Btarran	1
Deddeh	2
Anfeh	9
Nakhla	1
Dahr El Ein	2
Others	1
Akkar	Cases
Halba	3
Hayzouk	1
Bebnin	2
Mhammara	1
Abdeh	1
Fneidek	2
Wady El jamous	1
Ein El Zeit	1
Rayhanieh	1
Others	4
Beqaa ElGharby	Cases
Mashghara	1
Hosh El Hareeme	1
GhazzeH	2
El Marj	1
Others	1
Saida	Cases
Saida El Wastani	1
Haret Said	2
Saida El Qadema	3
Ein El Hilwe	2
Hlalieh	5
Qayyaaa	1
Ghazieh	1
Maghdoushe	1
Saida	16
Batroun	Cases
Shekka	1
Kfar Abida	1
Bejdarfel	1
Douma	2
Others	2

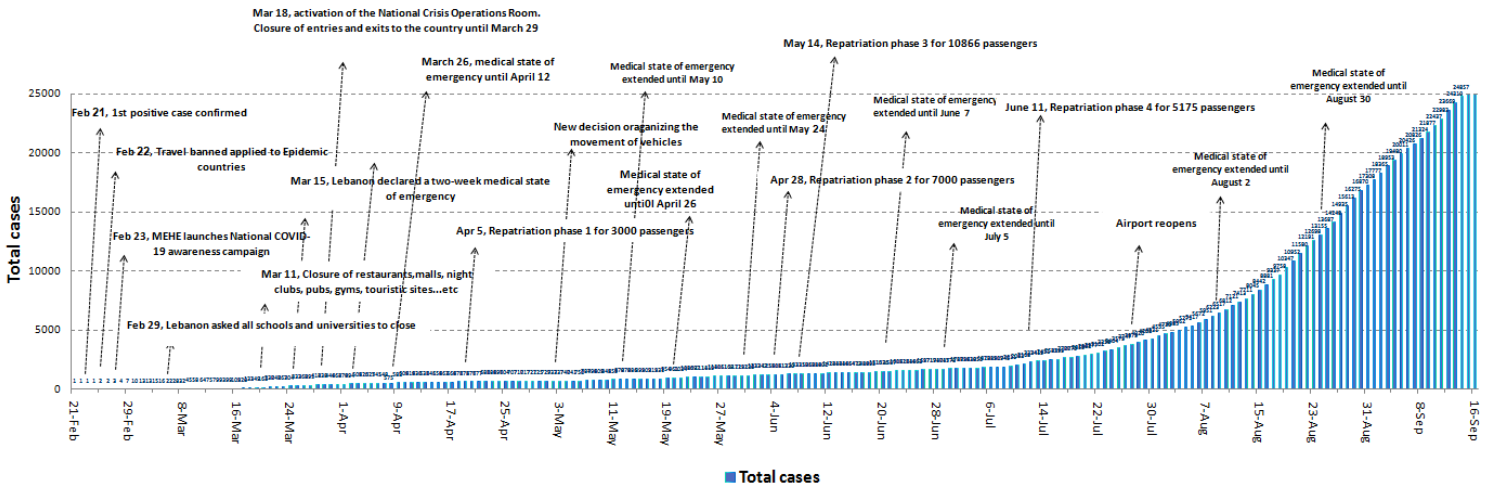
Cases per day



The percentage of positive cases out of the number of daily checks (3 September to 16 September 2020)



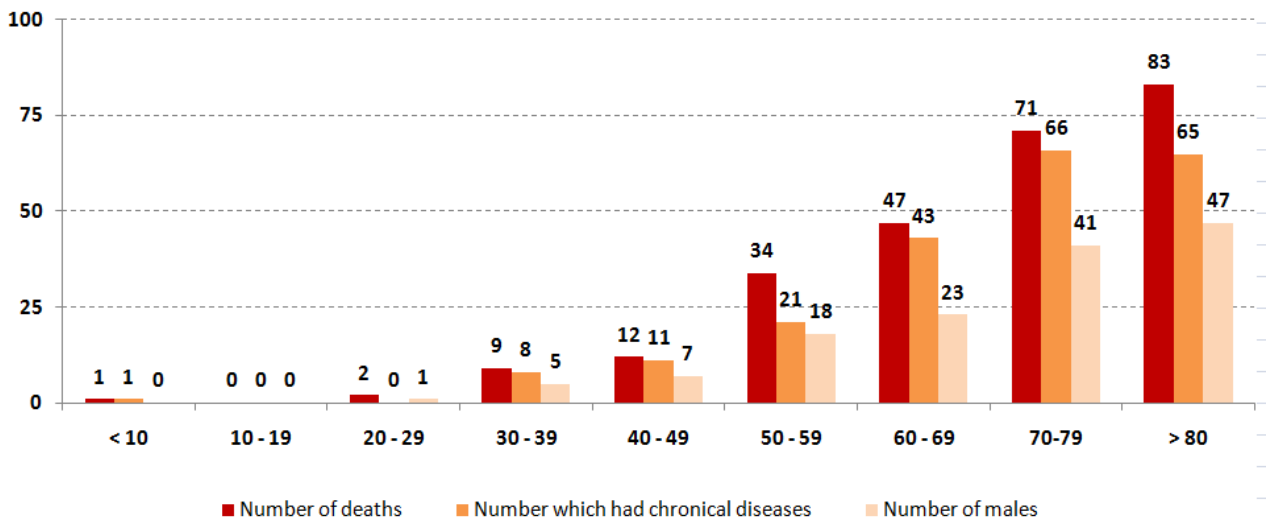
Chronology of decisions according to number of cases



Distribution of deaths by Governorates

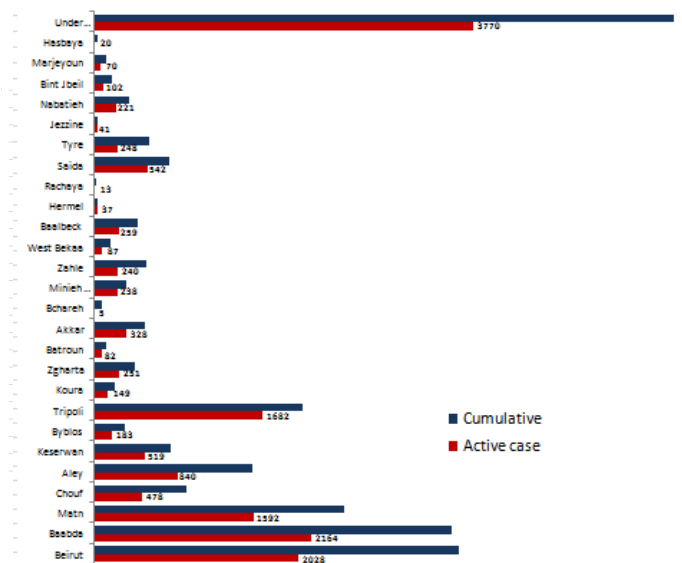
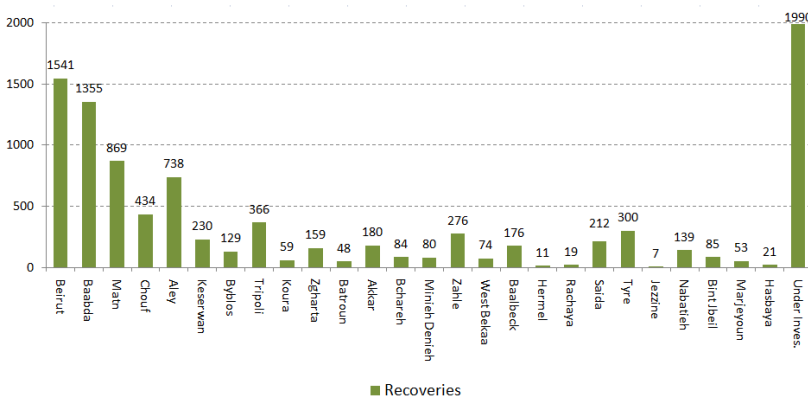


Distribution of deaths by Age

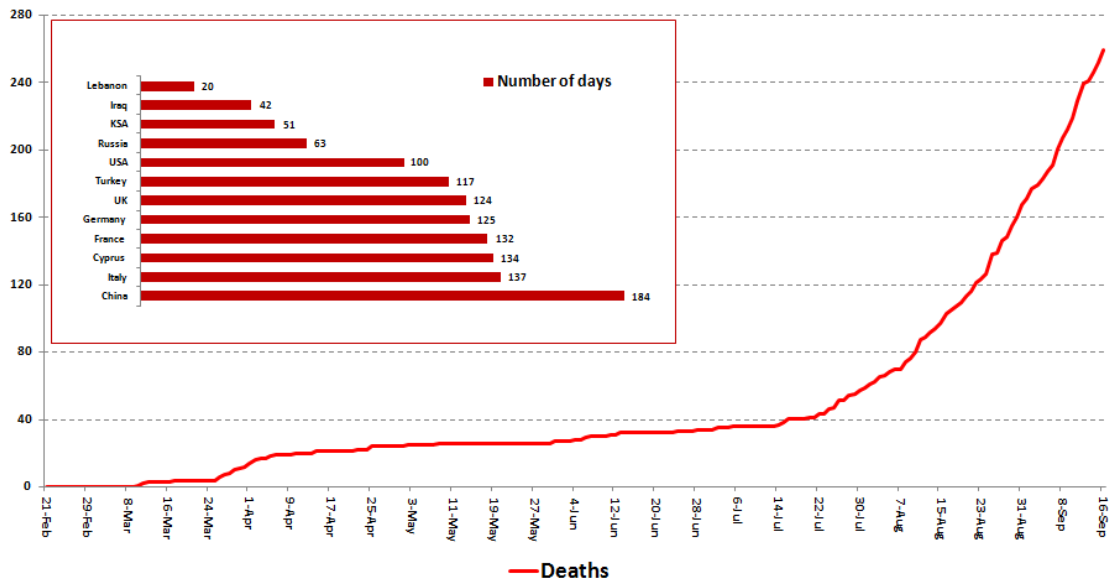


Distribution of Recoveries by Districts

Distribution of Active Cases by Districts



Comparison of the rate of doubling of the number of deaths in Lebanon with other countries (death doubling rate)

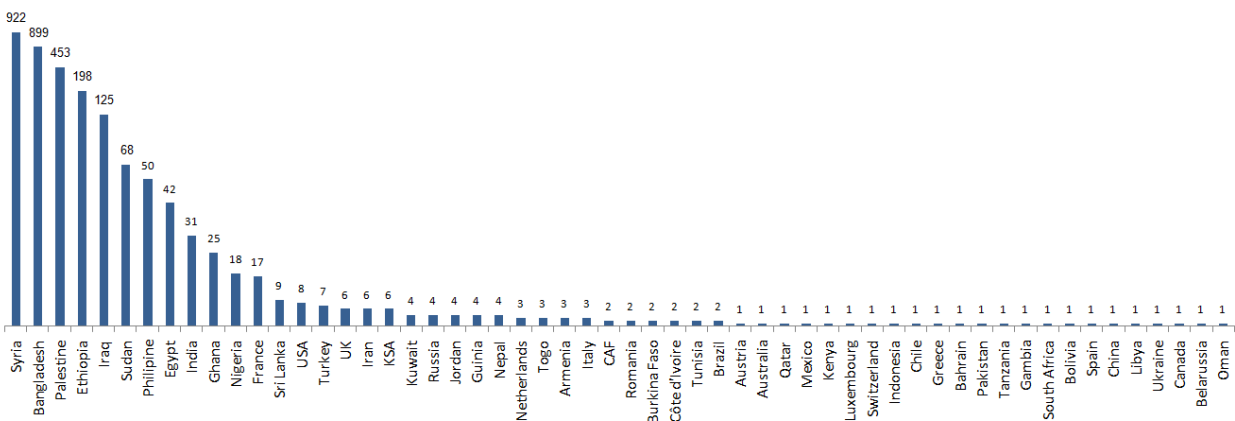


The distribution of the recorded deaths during the past 24 hours

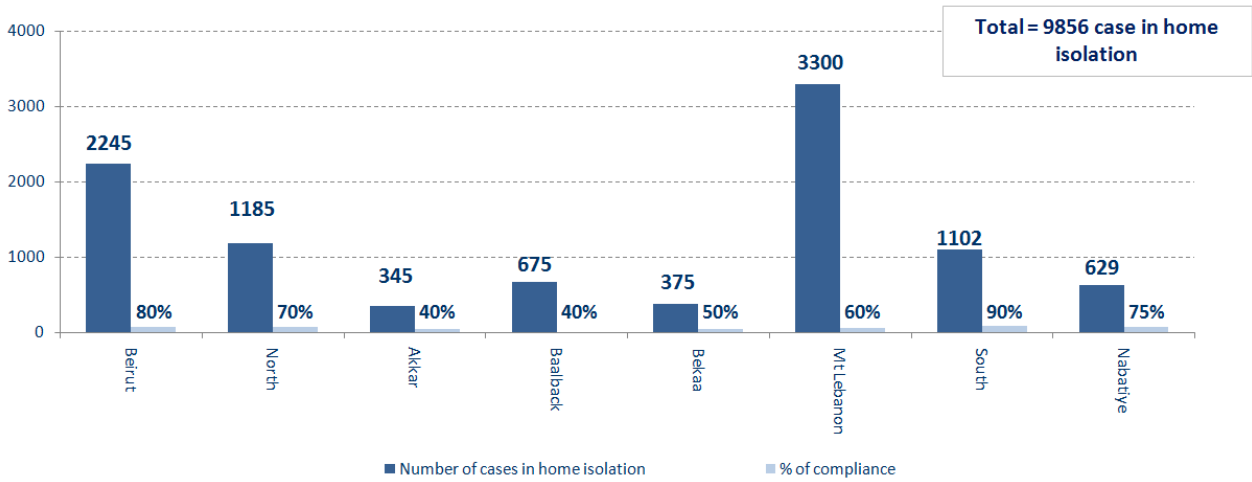
Hospital	Residence	Gender	Age	Chronic Disease
Harire Gov.	Aley	Male	38	Yes
Saint George Hadath	Aley	Male	76	Yes
Herawi Gov.	Zahle	Male	72	Yes
Haykal	Koura	Female	74	Yes
Tripoli Gov.	Tripoli	Female	78	Yes
Berri Gov.	Marjeyoun	Male	89	Yes
Ftough Keserwan	Maten	Male	82	Yes

Distribution of cases by nationality

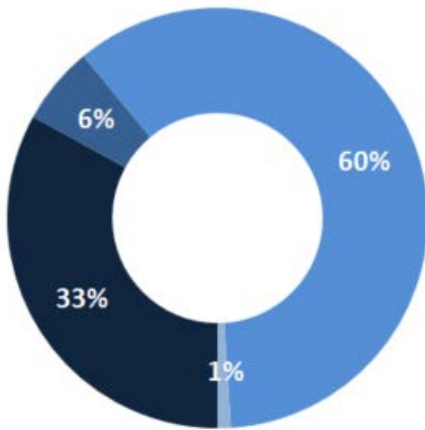
Lebanese : 23126 cases out of 26083(88%)



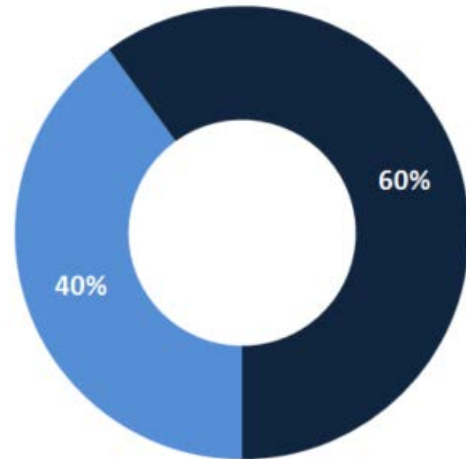
Number of individuals in home isolation and percentage of commitment to isolation



Exposure



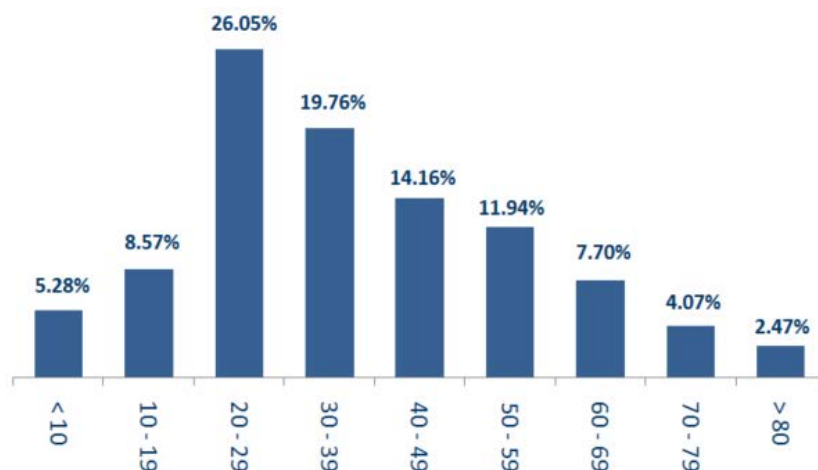
Distribution according to gender



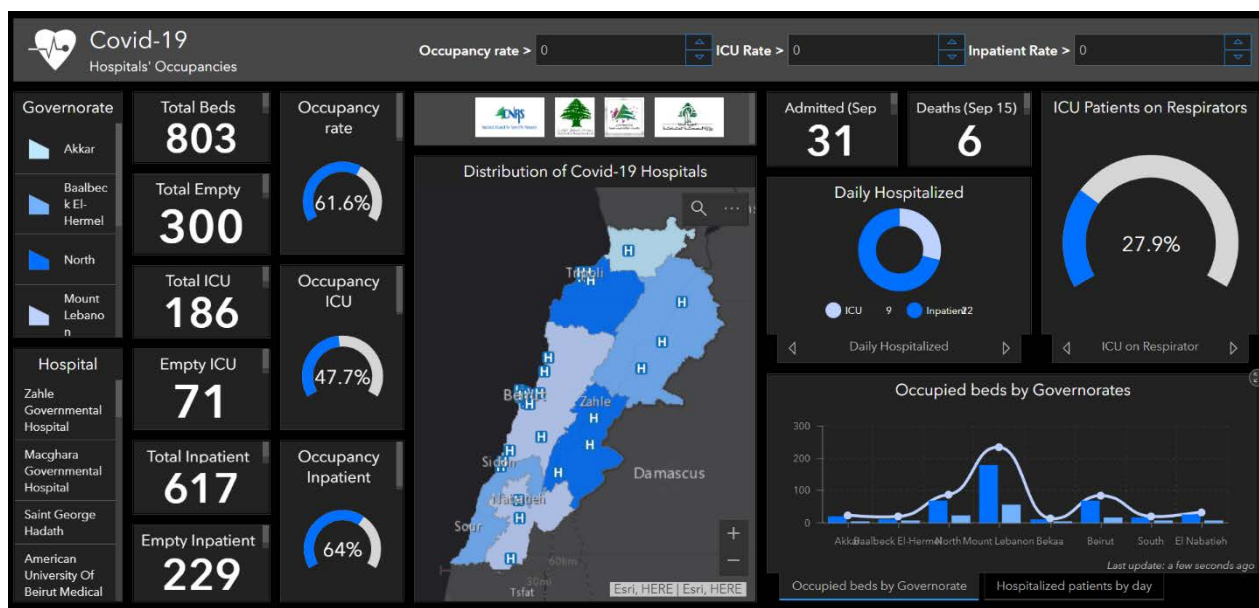
■ Female ■ Male

■ Contact with confirmed case ■ Travel related ■ Under investigation ■ Unidentified source

Distribution by age



The number of beds available for those infected with Coronavirus and the occupancy rate



For daily information on all the details of the bed distribution available for Covid-19 patients in the various governorates according to the hospitals

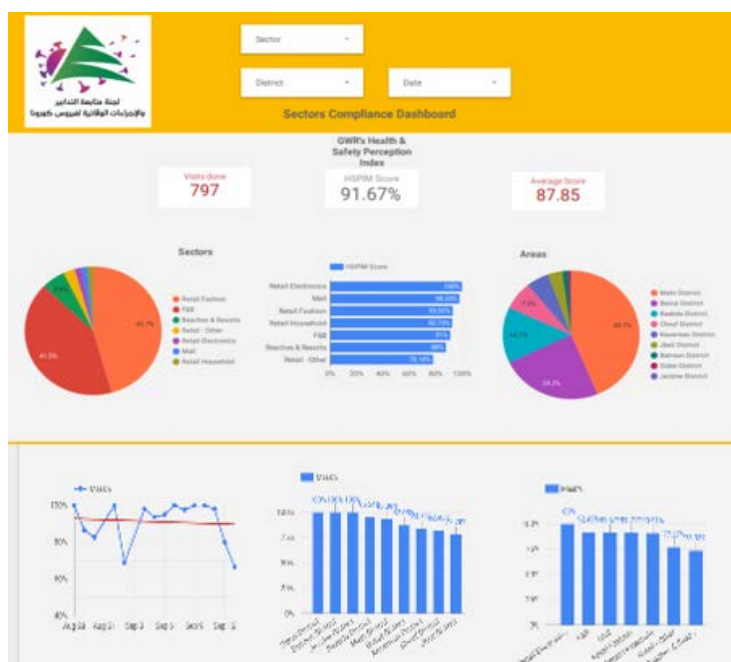
- Computer: <https://gisleb.cnrs.edu.lb/portal/apps/opsdashboard/index.html#/34b32db8030d4f229fc5db9ab686cca9>
- Mobile: <https://shorturl.at/cnqJ2>

Online platform to track sector commitment in general mobilization procedures

Based on the recommendation issued by the National Committee for Follow-up of Preventive Measures and Measures to Confront the Coronavirus to open all sectors, provided that the general mobilization procedure (safe distance, muzzle, and hand sterilization) be applied, a special electronic platform was created that allows monitoring and measuring the percentage of commitment by various sectors on an ongoing basis.

The detailed results can be viewed directly at the following link:

<http://bit.ly/covidsectordata>



Decisions and actions taken – 16/09/2020

Ministry of Public Health

The Ministry of Public Health is working to secure the vaccine for the Coronavirus by communicating with "Kovacs" (which includes the World Health Organization and the Global Vaccine Alliance) to secure the vaccine at a price that takes into account the current economic and financial data in Lebanon, in addition to direct communication with the Russian embassy to follow up developments and secure The necessary studies help to evaluate the effectiveness of the vaccine

As part of the procedures related to all travelers coming to Lebanon, the Ministry of Public Health reminded the need to register on the ministry's COVID-19 MOPH PASS and verify the information is correct before sending it so that they can follow up on their health status via the following link: <https://arcg.is/0GaDnG>. And to view the measures and procedures required of returnees via the following link: <https://moph.gov.lb/ar/MoPHPASS>.

The Ministry of Public Health issued Circular No. 142 on 9/14/2020 to amend the procedures for arrivals to Lebanon.

The Ministry of Public Health issued Memorandum No. 141 of 9/14/2020 regarding the adoption of the Covid-19 Patient Management Protocol based on the recommendations and directions issued by the Lebanese Society for Infectious and Clinical Diseases, available on the website:

<https://moph.gov.lb/userfiles/files/news/LSIDCM.pdf>

The Ministry of Public Health issued the results of additional examinations for incoming trips to Lebanon on September 13 and 14, 2020, when six new positive cases were recorded and distributed over the following flights:

Arriving from	Company	Flight Number	Number of Positive Cases
13/09/2020			
Istanbul	Iraqi Airways	266	2
Bghadad	MEA	131	4
14/09/2020			
			6

Lebanese Red Cross

219,547 (2600 New)	Number of PCR tests transferred to laboratories	44,484 (165 New)	Number of additional ambulance centers ready to respond	48	ambulance centers	4,858 (44 New)	cases transferred to hospitals
166	Number of volunteers trained to transfer PCR tests	1,498	Number of trained paramedics	8,584 (9 New)	total number of respondents	75,277 (41 New)	number of those benefiting from awareness *sessions
967	The number of university volunteers trained to follow up on prevention measures in companies and institutions	217	Number of university volunteers trained to conduct awareness sessions	550	total LRC volunteers for covid19	8,415 (9 New)	number of trained managers for isolation centers
4,199 (15 New)	Number of beneficiaries from educational electronic platforms COVID-19	89,474 (1411 New)	Number of distributed equipment	1,233,426	total distributed posters, brochures, and flyers on covid19 prevention	502 (3 New)	number of prisons that have been disinfected

General Directorate of State Security

- Investigating and following up on suspected and positive cases and cases in home quarantine for residents and expatriates.
- Sending warnings and closing a number of violating commercial stores in the various regions.

Beirut	South	North	Akkar	Beqaa	Nabateih	Baalbek Hermel	Mount Leb
25%	50%	60%	50%	55%	55%	20%	30%

General Directorate of Internal Security Forces

- Internal Security Forces circulated the preventive measures that must be followed when traveling by cars and using shared transportation and public cars.
- Writing arrest records against violators of the general closure decision

The number of seizure records during the past 24 hours					The total number of records that have been organized against violators of the general mobilization decisions since 03/08/2020		
Written records of violating institutions (absorptive capacity and preventive measures)					0		
Written records of persons violating the decision to wear a mask					47	Beirut	20,624
Written records of people violating the general mobilization decision (Aragil* and social distancing)					35	Mount Leb	18,803
Total					82	Beqaa	8,002
						North	6,781
Beirut	Mount Leb	Beqaa	North	South	South	6,736	
21	36	8	5	12	Total	60,946	

Ministry of Public Works and Transportation

Departing Flights		Arriving Flights	
Number of Flights	36	Number of Flights	33
Number of Departing Individuals	3,543	Number of Arrivals	2,343

Port	Entered			Left		
	Import	Direction	#	Export	Direction	#
Beirut	Containers	Alexandarun	1			
Tripoli	Metals	Italy	1	Blank	Greece	1
	Barley	Ukraine	1	Blank	Turkey	2
	Wood	Cairo	1	Blank	Alexandarun	1
			4	4		

General announcements

The implementation of the Ministry of Interior and Municipalities Decision No. 1056 of 9/8/2020 related to amending the opening and closing times of industrial and commercial establishments, as the timing of exit and entry into the streets was changed from the first hour after midnight until six in the morning, and the decision allowed bars and cabarets to open Nightclubs, electronic game stores, public parks, theaters, and cinemas, with strict enforcement of the preventive measures and measures adopted, provided that the swimming pools, indoor sports stadiums, amusement parks, and indoor spaces designated for children's games remain closed.

Note: The decisions can be found at www.drm.pcm.gov.lb

Examples of lack of adherence to safety measures

- Demand gatherings and demonstrations.
- Failure to comply with the preventive measures and procedures required in a number of stores and markets (putting on a muzzle or face mask, sterilizing hands, maintaining a safe distance).
- Non-compliance with the 50% occupancy rate in several restaurants and amusement game centers.
- Gatherings for social events.
- Failure of those in contact with confirmed cases to adhere to home isolation procedures until the results of the laboratory tests are issued.

If you feel any symptoms, call directly the hotline of the Ministry of Public Health: 1214 or 01/594459

A list of the laboratories accredited by the MoPH to conduct PCR tests

Public Hospitals			
Hospital Name	Location	Hospital Name	Location
Rafic Hariri University Hospital	Beirut	Bint Jbeil Governmental Hospital	Bint Jbeil
Tripoli Governmental Hospital	Tripoli	President Elias Hrawi Governmental Hospital	Zahle
Fattouh Keserwan Governmental Hospital	Kesrwen	Batroun Governmental Hospital	Batroun
Baalbek Governmental Hospital	Baalbek	Halba Governmental Hospital	Halba
Tibnin Governmental Hospital	Tibnine		
Private Hospitals			
Hospital/Lab Name	Location	Hospital/Lab Name	Location
AUBMC	Beirut	MLH	Baabda
Saint George Hospital	Beirut	Saint Georges Hospital	Baabda
Hôpital Notre Dame des Secours (CHU – NDS)	Jbeil	Ain w Zein Hospital	Chouf
HDF/Merieux/USJ	Beirut	Hamoud Hospital	Sidon
Makkassed General Hospitals	Beirut	Dar el Amal Hospital	Baalbek
LAUMC	Beirut	Sheikh Ragheb Harebb Hospital	Nabatieh
Wardieh Hospital	Beirut	Al Hadi Laboratory	Baabda
Al Mathlum Hospital	Tipoli	Akiki Laboratory	Byblos
Al Mounla Hospital	Tripoli	MDC	Tyr
Haykal Hospital	Koura	Jabal Amel Hospital	Tyr
Serhal Hospital	Metn	Doctor's Center	Beirut
HLG	Beirut	KML	Sidon
SDC	Nabteih	ADC*American Diagnostic Center	Beirut
INOVIÉ Laboratory	Baabda	Khoury Hospital	Zahle
TRANSMEDICAL Laboratory	Metn	Sacre Coeur	Hazmieh
MCC	Zahle	BELLEVUE Hospital	Mansourieh
CHN	Zaghrta	LMSE	Tripoli
Clinigen Laboratory	Hazmieh	Al Rasoul Al Aazam Hospital	Beirut
Centre Medical Moderne	Ghbraye	Nabni Hospital	Tripoli
MDTC	Hamra		

Note: Some positive test results are sent from the highlighted laboratories to the Ministry of Public Health, that does not include a phone number to track cases, which contributes to the spread of the epidemic and unknown cases