



Lebanon National Operations Room Daily Report on COVID-19

Friday, October 16, 2020

Report #212

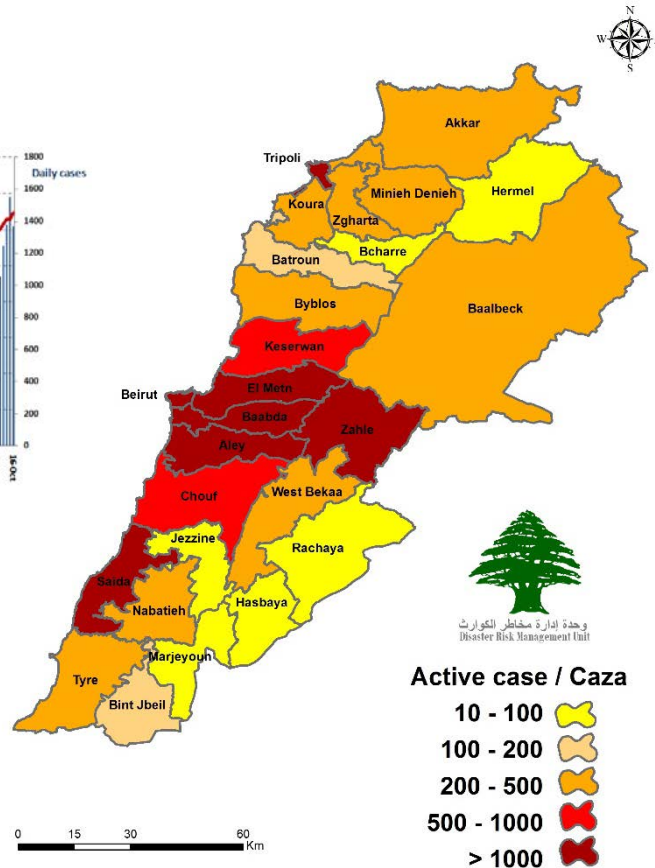
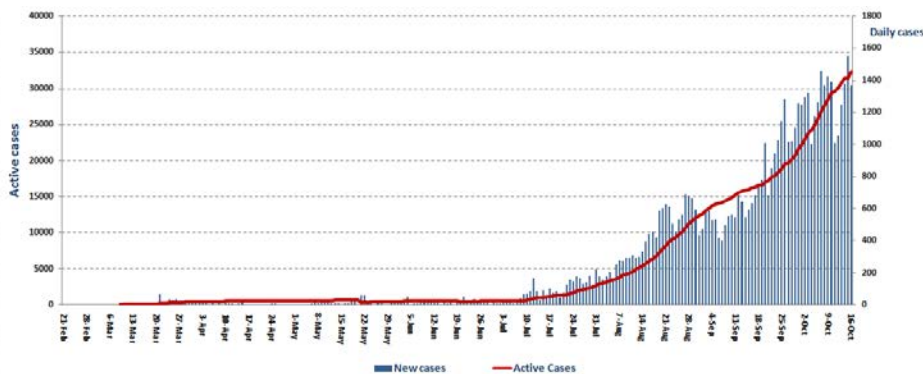
Time Published: 10:30 PM

1,368 New Cases		59,881 Total Cases since 21.2.2020		509 Total Deaths	26,468 Total Recovered
1,308 Residents	60 Expats	57,952 Residents	1,929 Expats	8 New Deaths	774 New Recovered
1,256 Total Cases in the Health Sector		32,904 Total Active Cases		627 Hospitalized Cases	201 Total Cases in ICU
15 New Cases in the Health Sector		32,277 Cases in Home Isolation		426 Mild Cases	6 New Cases in ICU
986,635 COVID-19 Tests since 21.2.2020		Lebanon Status compared to the World			
1,215 COVID-19 Tests at Airport within 24 hrs.		12,974 COVID-19 tests for residents within 24 hrs.		Total Cumulative	59,881
				Total Deaths	509
				Deaths percentage	0,85%
				Total recoveries	26,468
					39,388,943
					1,105,915
					2.8%
					29,508,233

Ref: Ministry of Public Health Data

Number of Cases by Location

- 10,161 case is Under investigation



Active case / Caza

10 - 100

100 - 200

200 - 500

500 - 1000

> 1000



وحدة إدارة مخاطر الكوارث
Disaster Risk Management Unit

Beirut	117
Ein Al Mreisseh	3
Ras Beirut	1
Qoreitem	1
Raouche	2
Hamra	6
Mseitbeh	10
Mar Elias	3
Tallet Al Khayyat	2
Sanayeh	1
Zarif	2
Mazraa	1
Borj Abi Haidar	4
Basta Fawka	3
Tariq Al Jdeedeh	15
Ras Al Nabaa	9
Basta Tahta	1
Jietawy	1
Ashrafieh	29
Others	23
Baabda	166
Chiah	21
Jnah	3
Ouzai	10
Bir Hassan	2
Ghobeiry	2
Ein Al Rimmaneh	17
Forn Al Shubbak	5
Haret Hreik	11
Lailaky	3
Borj Al Barajneh	31
Mreijeh	3
Tahweetet Ghadir	6
Baabda	3
Hazmieh	2
Hadat	23
Botchay	1
Jumhour	1
Kfarshima	6
Deir Al Harf	2
Arayya	1
Rweisat Salima	1
Chebanieh	1
Falougha	1
Others	10
Tripoli	57
Zaytoun	6
Bab Al Ramel	1
Qebbeh	2
Zahrieh	1
Mina	10
Bsatin Al Mina	3
Qalamoun	1
Beddawy Camp	1
Others	32

Chouf	70
Damour	2
Saadiyat	1
Naameh	2
Haret Al Naameh	3
Chhim	12
Mazboud	1
Darayya	1
Ketermaya	1
Barja	8
Baasir	1
Baq'oun Bakh'oun	1
Jiyyeh	6
Jadra	2
Wady Al Zainy	2
Rmeileh	3
Zaarourieh	1
Deir Al Qamar	1
Shwaleeq	1
Kfar Faqoud	2
Kfarheem	1
Baaqleen	2
Jahlieh	1
Mokhtara	1
Baqaata	2
Niha	1
Baadaran	1
Al Mazraa	1
Bater	1
Barouk	2
Others	6
Keserwan	59
Sarba	9
Kaslik	1
Zouk Michael	3
Ghadir	6
Zouk Mosbeh	11
Adonis	2
Sahel Alma	2
Tabarja	2
Adma & Dafneh	1
Safra	1
Bouar	1
Oqaybeh	1
Ajaltoun	1
Sehaileh	1
Ghazir	2
Kfarhbab	2
Kfour	1
Nammoura	1
Ghbala	1
Yahshoush	1
Reifoun	1
Qleiaat	3
Ashkout	3
Baqaatet Ashkout	1
Others	1

Kesrwen	40
Halba	1
Sheikh Mohamad	1
Qantara	2
Bqerzla	1
Old Akkar	1
Kousha	1
Beit Al Haj	1
Hekr Qatta	1
Tal Hmeira	1
Bebnin	1
Nahr Al Bared	5
Abdeh	1
Khreibeh	1
Fneidek	1
Hmeira	2
Rahbe	1
Kfarnoun	1
Beereh	1
Qobayat	1
Dahr Al Ballan	1
Wady Khaled	1
Akroum	1
Others	12
Zahle	42
Rassieh	2
Zahle Arady	8
Mar Elias	1
Forzol	4
Hazzarta	1
Ablah	1
Ksara	6
Makseh	1
Saadnayel	1
Qab Elias	1
Mreijat	1
Bouarej	2
Bar Elias	4
Majdel Anjar	2
Riyak	3
Terbol	2
Ein Kfarzabad	1
Kfarzabad	1
Western Beqaa	17
Jeb Jinnin	2
Kherbet Qanafar	1
Kamed Al Loz	3
Ghazzeh	2
Manara	1
Hoch Hareemeh	1
Suhmor	1
Marej	3
Others	3

Matn	230
Borj Hammoud	13
Nabaa	1
Sin El Fil	17
Horch Tabet	1
Jdeidet Al Metn	6
Bouchrieh	9
Dora	8
Rawda	7
Sed El Bouchrieh	7
Sabtieh	12
Dekwene	21
Antelias	5
Jal Al Dib	6
Naqqash	5
Zalka	9
Byaqout	2
Bellevue	4
Dbayyeh	4
Deir Aoukar	1
Mansouriyeh	19
Dayshounieh	5
Fanara	5
Z'aytrieh	1
Ein Saadeh	6
Ein Najm	1
Bsalim	5
Nabayh	3
Mteileb	1
Rabieh	4
Qornet Chehwan	1
Elissar	2
Rabweh	6
Beit Al Chaar	2
Deek Al Mahdy	4
Maraet Yashouh	4
Bhorsaf	1
Ein Aalak	1
Qornet Al Hamra	1
Broummana	1
Baabdat	4
Beit Merry	3
Bsefreen	1
Mrouj	1
Khenshara	1
Douwar	1
Baskinta	1
Baqaata Al Nahr	2
Others	5
Menyh Dunnayah	6
Bhannin	1
Haql Al Azeemeh	1
Qarseeta	1
Mrah Al Sreij	1
Bakh'oun	1
Others	1

Aleyh	55
Al Amrousieh	2
Hay Al Sillom	5
Khalde	3
Al Oumara	7
Deir Qoubel	1
Aramoun	12
Bshamoun	4
Ein Anoub	1
Bdadoun	1
Aley	5
Kahale	1
Baysour	2
Bhamdoun	2
Bedghan	1
Btater	1
Mesherfeh	2
Tweity	1
Others	4
Nabatieh	23
Nabatieh Al Bayad	2
Nabatieh Al Fawka	1
Mazraet Kfar El Joz	1
Shoukine	1
Habbouch	1
Roumeen	3
Toul	2
Dweir	1
Meifadoun	1
Adshit Al Shqeef	1
Aabba	1
Qseibeh	3
Western Seer	1
Others	4
Batroun	23
Batroun	10
Kfar Abida	2
Kebba	1
Selaata	1
Hery	1
Shekka	3
Shghar	1
Besbiya	1
Others	3

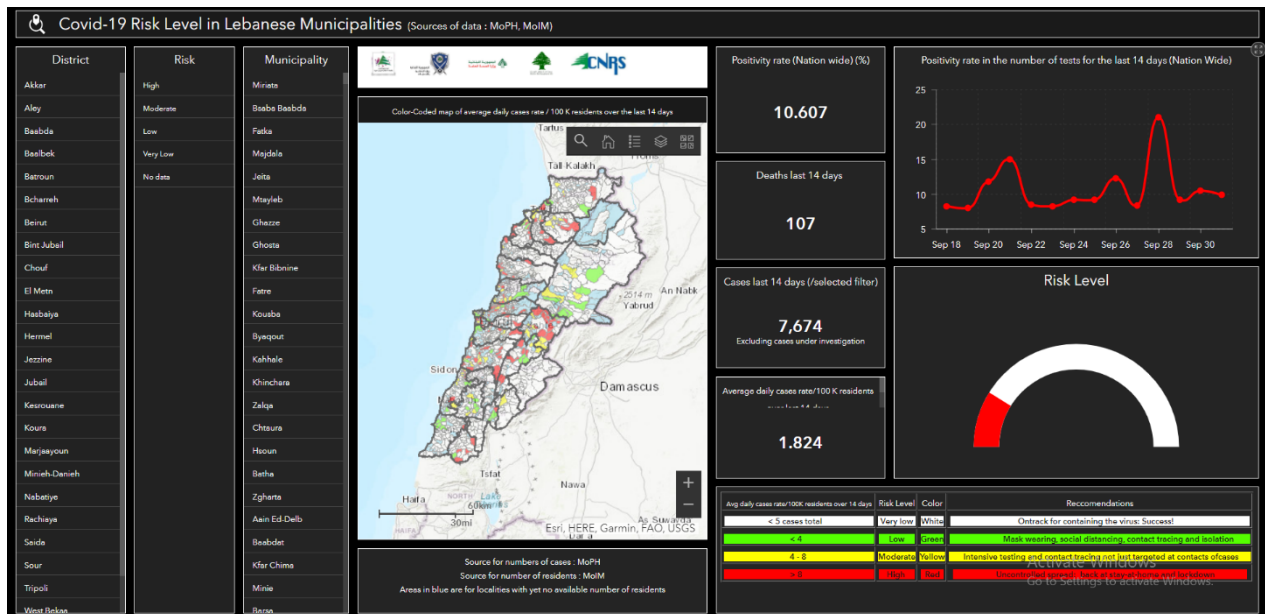
Byblos	31
Byblos	9
Eddeh	1
Amshit	6
Halat	2
Jeddayel	1
Nahr Ibrahim	1
Monsef	1
Shekhnaya	1
Annaya	1
Adonis	1
Ghalboun	1
Hboub	1
Gherfeen	1
Maad	1
Shikhan	1
Jaj	1
Others	1
Jezzine	7
Jezzine	2
Kfarhouna	1
Lebaa	2
Jenesnaya	1
Others	1
Hermel	6
Hermel	2
Others	3
Rashayya	8
Tannoura	1
Dahr Al Ahmar	1
Kfar Denees	1
Rafeed	1
Others	4
Bint Jbeil	8
Aynata	2
Tebnin	1
Yater	2
Debel	2
Others	1
Marjeyoun	1
Majdel Silim	1
Hasbayya	4
Hasbayya	3
Others	1

Saida	52
Hlalieh	2
Haret Saida	6
Ein Al Helwe	7
Aabra	9
Majdlyoun	2
Bqosta	1
Bestan Al Sheikh	1
Ein Al Delb	1
Ghazieh	5
Maghdoushe	3
Arnaba	1
Tanboureet	2
Arzy	1
Khrayeb	1
Zrariah	1
Sarafand	3
Kawthriyt Seyyad	1
Saksakieh	2
Mawaniyyeh	1
Addousieh	1
Kfarmelky	1
Koura	7
Amyoun	1
Btouratej	1
Anfeh	3
Others	2
Zghorta	22
Zghorta	3
Byayader Rashen	1
Majdlayya	3
Haret Al Jdeedeh	2
Alma	3
Ehden	4
Meryata	1
Others	5

Tyre	32
Tyre	4
Borj Al Chemaly	1
Deir Al ein	1
Jouayya	1
Mahrouneh	1
Yanouh	1
Bareesh	1
Maarakeh	1
Maaroub	2
Rashkananieh	1
Saddeeqeen	2
Ein B'aal	1
Bazourieh	1
Abbasieh	3
Qleileh	1
Jebbein	1
Others	9
Baalbek	68
Qaa Baalbek	2
Sharawneh	1
Ras Al Ein	1
Doures	1
Nahle	1
Kfar Dan	1
Al Ein	1
Arsal	1
Toufikieh	3
Shaeth	2
Baalbak	9
Bednayel	13
Temnin Al Fawka	1
Temnin Al Tahta	6
Hoch Al Rafqa	1
Tarayya	2
Naby Sheeth	3
Khreibeh	1
Others	18

Others	185
--------	-----

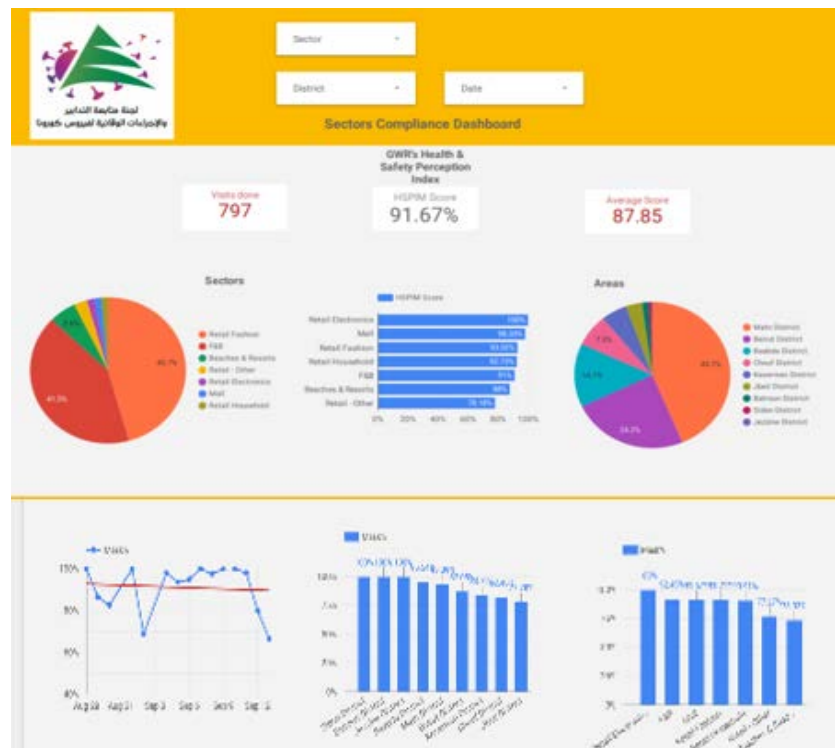
The Online platform to measure the level of risk of the spread of the new Corona virus



This interactive platform allows you to know the level of risk of spreading the kurna virus according to districts, based on the number of cases registered daily and the number of residents in each district. For more information on a daily basis, you can access the following link:

<https://bit.ly/DRM-RiskLevelInMunicipalities>

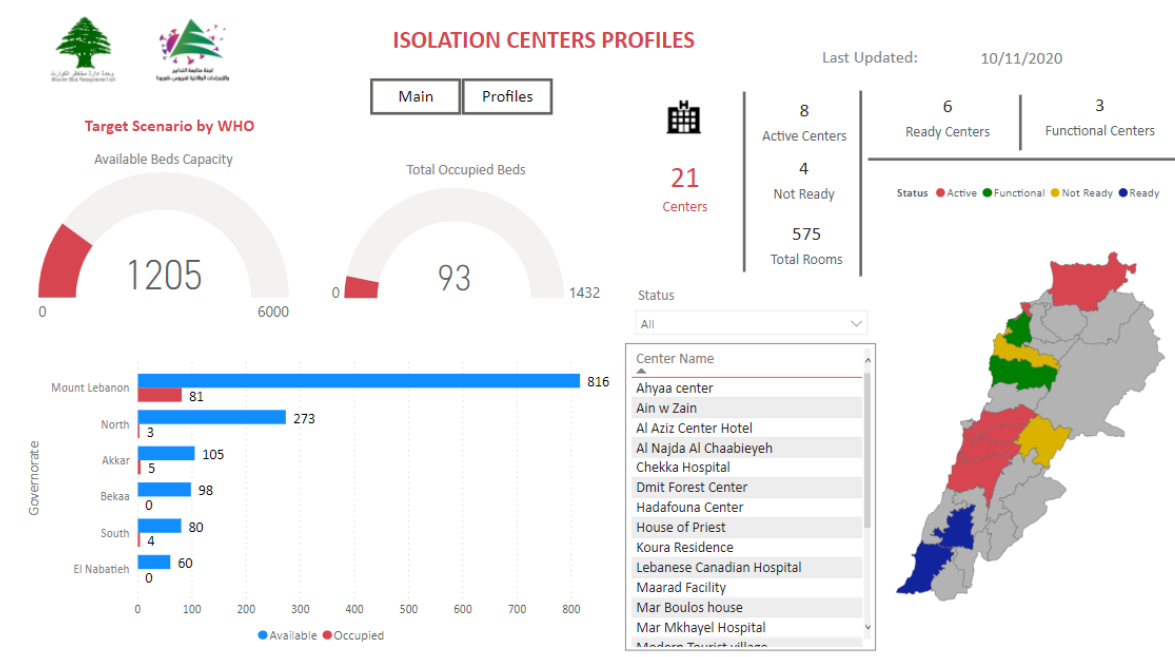
Online platform to track sector commitment in general mobilization procedures



Based on the recommendation issued by the National Committee for Follow-up of Preventive Measures and Measures to Confront the Coronavirus to open all sectors, provided that the general mobilization procedure (safe distance, muzzle, and hand sterilization) be applied, a special electronic platform was created that allows monitoring and measuring the percentage of commitment by various sectors on an ongoing basis. The detailed results can be viewed directly at the following link:

<http://bit.ly/covidsectordata>

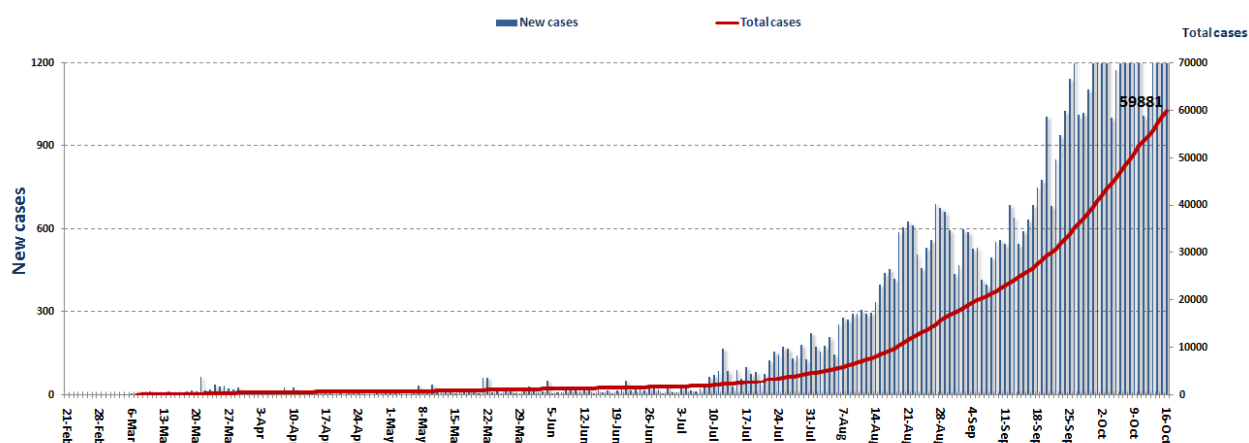
Occupancy rate of isolation centers for cases infected with Coronavirus



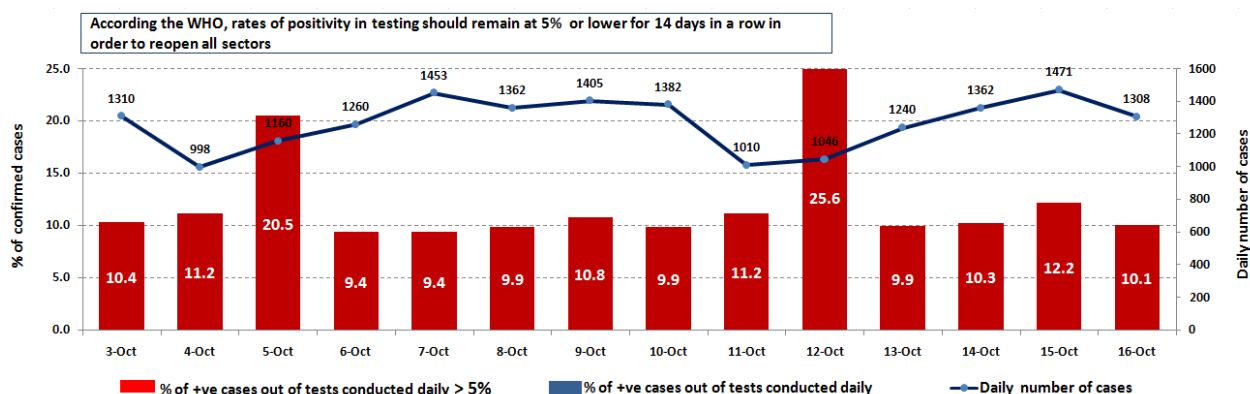
For more information about the isolation centers' distribution and the percentage of their occupancy, enter the following link: <http://bit.ly/DRM-IsolationCentersProfiles>

Note: These centers have been equipped in cooperation between the National Committee for Follow-up of Preventive Measures and Measures to Confront the Coronavirus and Governors and Municipalities, the United Nations Development Program, the World Health Organization, UNICEF, the Ministry of Public Health, the Syndicate of Nurses in Lebanon and the Syndicate of Specialists in Social Work.

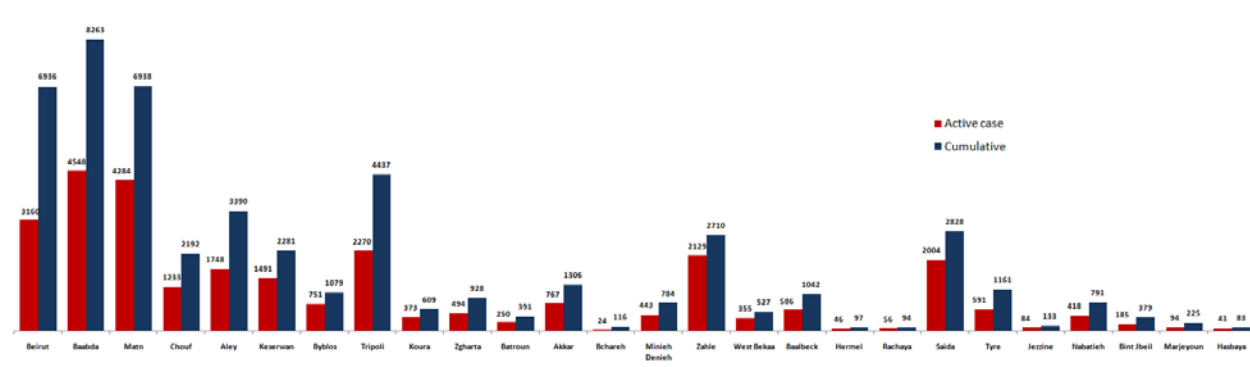
Cases per day



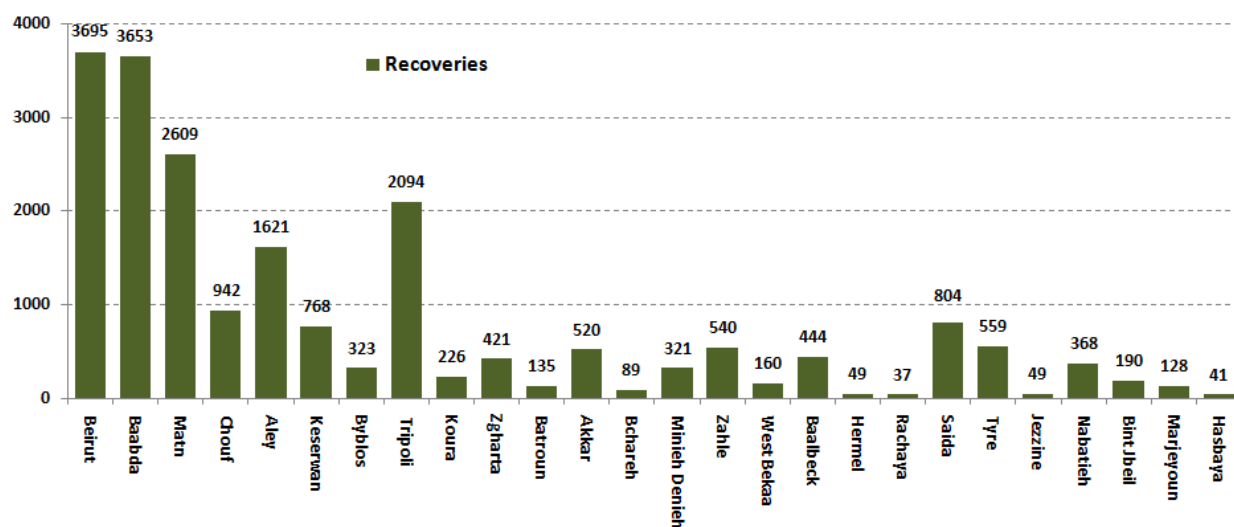
The percentage of positive cases out of the number of daily checks (3-16 October 2020)



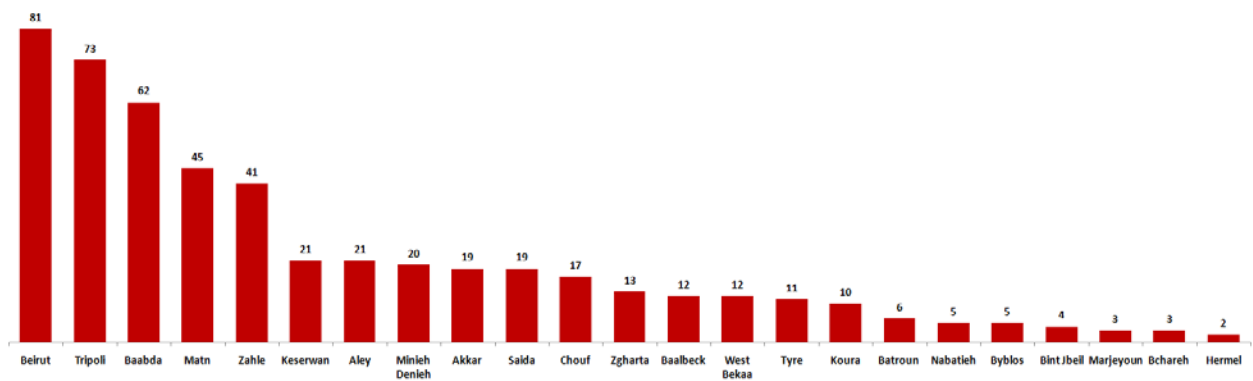
Distribution of Active Cases by Districts



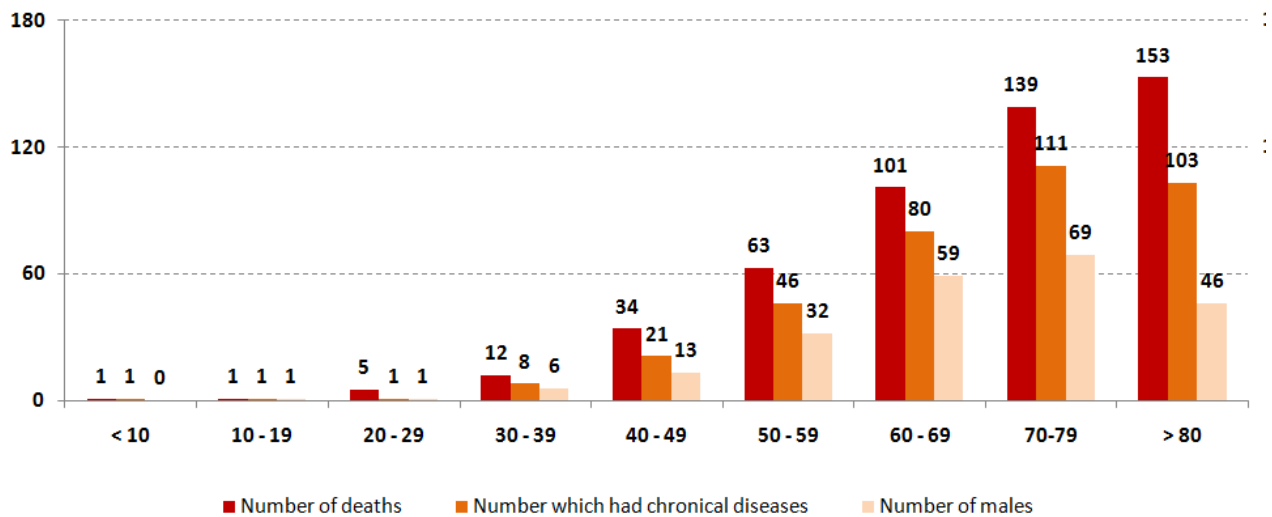
Recoveries



Distribution of deaths by Governorates



Distribution of deaths by Age

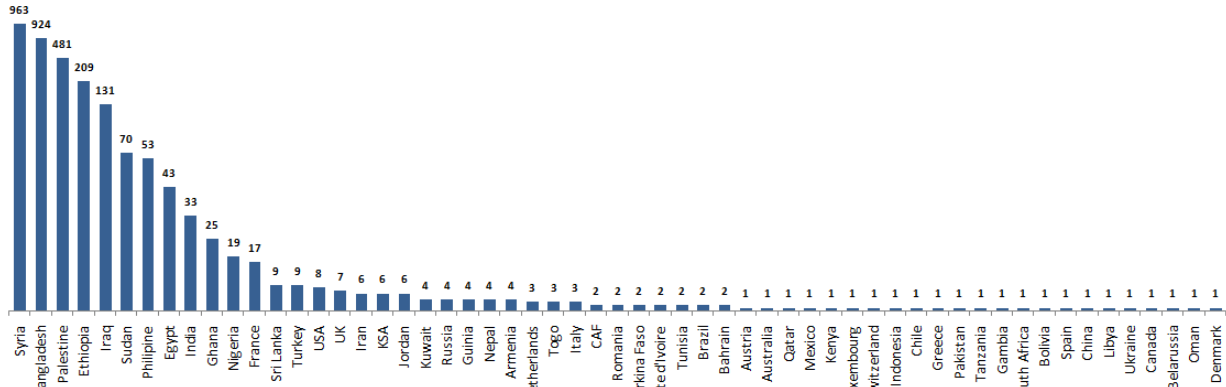


The distribution of the recorded deaths during the past 24 hours

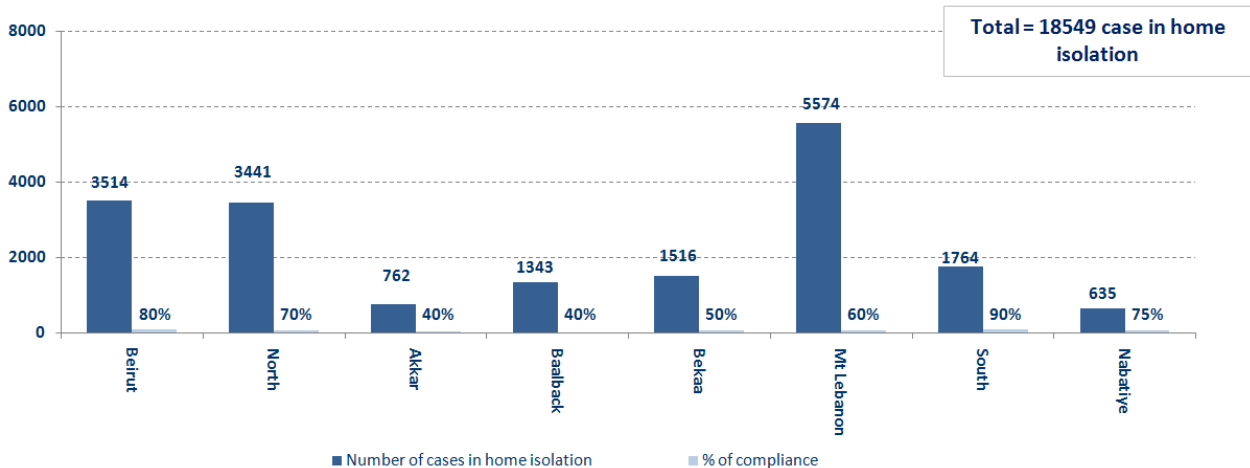
Hospital	Residence	Gender	Age	Chronic
-	Tripoli	Female	47	Yes
-	Tripoli	Male	65	-
Saint George – Hadth	Baabda	Male	82	Yes
RHUH	Saida	Male	77	Yes
RHUH	Kesrwen	Male	78	Yes
RHUH	Baabda	Male	50	Yes
RHUH	Baabda	Male	74	Yes
RHUH	Matn	Male	51	Yes

Distribution of cases by nationality

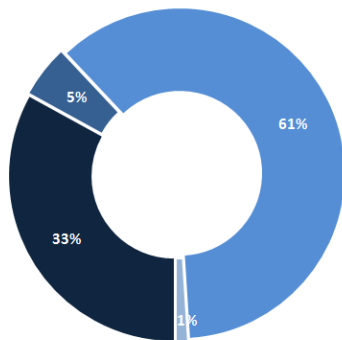
Lebanese : 54417 cases out of 59881 (88%)



Number of individuals in home isolation and percentage of commitment to isolation

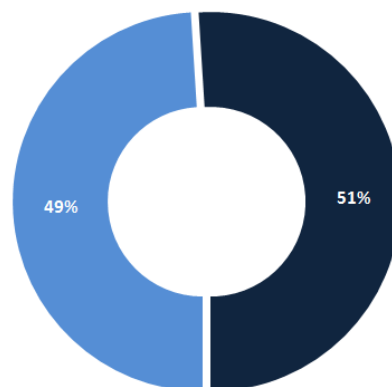


Exposure



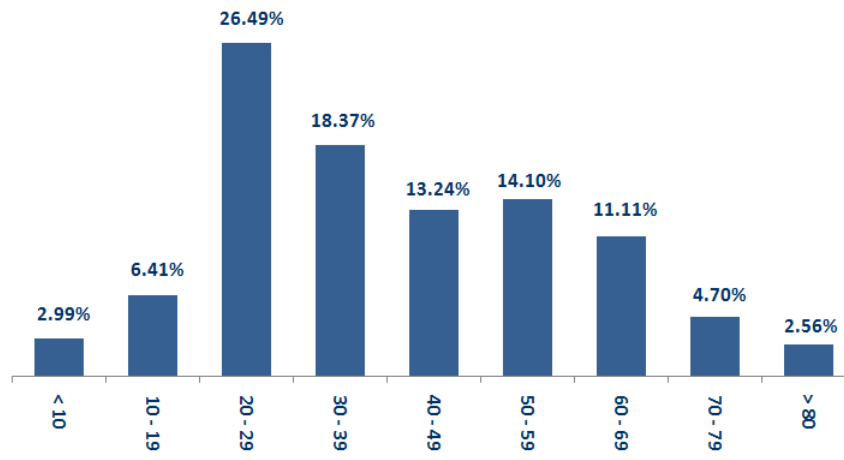
■ Contact with confirmed case ■ Travel related ■ Under Investigation ■ Unidentified source

Distribution according to gender



■ Female ■ Male

Distribution by age



Decisions and actions taken – 10/16/2020

Ministry of Public Health

Within the framework of implementing its strategy to increase the number of intensive care beds, the Ministry clarified that the percentage of those in need of intensive care in Lebanon ranged between five and six per thousand, but the danger is the limited number of intensive care beds, as the Ministry was able to add 61 beds in the last two weeks in government hospitals in various Lebanese regions.

Arriving from	Company	Flight Number	Number of Positive Cases
N/A			
Total			

Lebanese Red Cross

234,025	Number of PCR tests transferred to laboratories	49,697 (64 New)	Number of additional ambulance centers ready to respond	48	ambulance centers	6,442 (57 New)	cases transferred to hospitals
166	Number of volunteers trained to transfer PCR tests	1,498	Number of trained paramedics	8,760	total number of respondents	85,933 (1061 New)	number of those benefiting from awareness *sessions
967	The number of university volunteers trained to follow up on prevention measures in companies and institutions	291	Number of university volunteers trained to conduct awareness sessions	550	total LRC volunteers for covid19	8,646	number of trained managers for isolation centers
4,290 (10 New)	Number of beneficiaries from educational electronic platforms COVID-19	95,711 (72 New)	Number of distributed equipment	1,242,498	total distributed posters, brochures, and flyers on covid19 prevention	862	number of prisons that have been disinfected

General Directorate of Internal Security Forces

The number of seizure records during the past 24 hours					The total number of records since 03/08/2020	
Written records of violating institutions (absorptive capacity and preventive measures)				7		
Written records of persons violating the decision to wear a mask				0	Beirut	20,950
Written records of people violating the general mobilization decision (Aragil* and social distancing)				460	Mount Leb	19,750
Total				467	Beqaa	8,392
					North	7,422
Beirut	Mount Leb	Beqaa	North	South	South	7,410
102	94	59	116	96	Total	63,924

General Directorate of State Security

- Reporting the closure of the Nabatieh Public Secondary School for Girls in the town of Kafr Ruman due to the injury of one of the school's teachers, for a period of 48 hours, so that the municipality can sterilize the school, identify contacts and conduct the necessary checks.
- Reporting the closure of Rmeish Public Secondary and Rmeish Technical School due to the increase in Corona cases in the town.
- Reporting the total number of injuries in the General Directorate of State Security, which reached 70 cases.
- Notification of the percentage of compliance with the general mobilization decision in the governorates, which came as follows within the past 24 hours:

Beirut	South	North	Akkar	Beqaa	Nabateih	Baalbek Hermel	Mount Leb
25%	51%	50%	50%	55%	65%	N/A	50%

General Directorate of General Security

- A statement about the closure of the two pens of Antelias and Bikfaya due to the presence of Coronavirus infections.
- Reporting the commitment of the municipalities to the decision of the Minister of Interior and Municipalities:

Municipalities that abided by the decision	Municipalities didn't abide by the decision
Hamat, Kafr Ubaida, Dalhamiya, Kfar Zabad, Housh Halan, Terbol, Farzol, Qaa Al-Reem, Saadnayel, Bar Elias, Chtoura, Bareges, Khirbet Qanfar.	Chekka, Rayak, Al Muhammarah, Rumaila, Shehim, Barja, Houmal, Rmeish, Debil , Arabsalim.

- Follow up the implementation of the required security and preventive measures at the airport, ports and border crossings.
- Reporting cases registered in the various districts and cases in home quarantine.

Ministry of Public Works and Transportation

Departing Flights		Arriving Flights	
Number of Flights	44	Number of Flights	49
Number of Departing Individuals	4,928	Number of Arrivals	4,569

Port	Entered			Left		
	Import	Direction	#	Export	Direction	#
Beirut	Cattles	Qartaja	1	Transit	Alexandrun	1
	Cattles	Bara	1			
	Containers	Lazqyeih	1			
Chekka				Containers	Turkey	1
Saida	Metals	Tripoli				
Zahrani	Fuel Oil	Belgium	1			
Jouneih	Fuel Oil	Gibraltar	1			
Total			6			2

General announcements

The Ministry of Interior and Municipalities issued Memorandum **No. 107 / A.M. / 2020** on **10/14/2020** on the mechanism for controlling the conditions of the quarantined and the procedures to be implemented at the level of the governorates, districts, municipalities, and the Lebanese Red Cross, which was mandated to follow up the conditions of those quarantined in homes through its representatives deployed in Various governorates and districts. The most prominent actions mentioned in the memorandum:

• Governors:

- Coordination with the Red Cross through the representative specified in the memorandum.
- Asking the district administrators to inform the municipalities of the duties of the delegates of the Lebanese Red Cross to ensure proper implementation and coordination.
- Requesting the district mayors to provide the municipalities and representatives of the Red Cross with all information about the quarantined persons.
- Follow up on the conditions of the basic quarantine centers specialized for the injured who do not need health care.

• Kaa'makam:

- Follow up the conditions of quarantined quarantine and approved quarantine centers in the towns that fall within their scope of work, in coordination with the concerned municipalities.
- Coordinating the work of the judiciary doctor, delegates and volunteers of the Red Cross, and the municipal work teams.

• Mayors:

- Ensure that quarantined persons adhere to quarantine procedures and instructions in coordination with representatives of the Red Cross.
- Training a rapid intervention team to transfer infected cases to quarantine centers or hospital.
- Coordination with representatives of the Red Cross to confirm information about all interdicted cases and monitor the development of their conditions.

• Lebanese Red Cross:

- Training teams of volunteers from villages and towns to raise awareness about quarantine and prevention measures.
- Follow up the conditions of the quarantined in all Lebanese regions through delegates and ensure their commitment to the required procedures in coordination with the municipality.
- Providing the quarantined and their families with clear instructions and instructions on how to act during the home quarantine and when any symptoms appear

Implementation of the decision issued by the Ministry of Interior and Municipalities **No. 1252 on 10/13/2020** related to amending the schedule of villages and towns that have been closed due to the high number of Coronavirus infections in them, as the towns of Naqoura, Jal el Dib, Za'aruriya, Batroun, Roumieh, Bikfaya - Al-Muhaidithha are canceled. Bint Jbeil, from the attached table in Resolution **No. 1250 issued on 10/11/2020**, and the towns of Bakhoun, Naameh and Haret Al-Naameh shall be added to the table attached to the decision. Provided that consideration will continue to restore the situation to normal in the closed towns and villages, based on the results of the examinations

Implementing the decision issued by the Ministry of Interior and Municipalities **No. 1250 on 10/11/2020** related to the closure of some villages and towns due to the high number of cases of Coronavirus in them, based on the recommendations of the Committee for Follow-up of Measures and Preventive Measures of Coronavirus.

Note: The decisions can be found at www.drm.pcm.gov.lb

Examples of lack of adherence to safety measures

Failure of some municipalities to abide by the Ministry of Interior and Municipalities Decision No. 1025/2020 related to the closure of towns that have a high risk of the spread of the epidemic.

- Demand gatherings and demonstrations.
- Failure to comply with the preventive measures and procedures required in several stores and markets (putting on a muzzle or face mask, sterilizing hands, maintaining a safe distance).
- Non-compliance with the 50% occupancy rate in several restaurants and amusement game centers.
- Gatherings for social events.
- Failure of those in contact with confirmed cases to adhere to home isolation procedures until the results of the laboratory tests are issued.

If you feel any symptoms, call directly the hotline of the Ministry of Public Health: 1214 or 01/594459

A list of the laboratories accredited by the MoPH to conduct PCR tests

المختبرات الحكومية المؤهلة لإجراء التشخيص المخبري لفيروس كورونا بطريقة الـ RT-PCR

المختبر	الموقع
مستشفى رفيق الحريري الجامعي RHUH	بيروت
مستشفى حيا الحكومي	حيا
مستشفى طرابلس الحكومي	طرابلس
مستشفى البترون الحكومي	البترون
مستشفى قنوح كسروان الحكومي (البوار)	كسروان
مستشفى نبيه بري الحكومي الجامعي	البيشة
مستشفى تينين الحكومي	تينين
مستشفى بنت جبيل الحكومي	بنت جبيل
مستشفى بعطيك الحكومي	بعطيك
مستشفى الرئيس الياز اليراي الحكومي	زحلة

مختبرات المستشفيات العسكرية

بيروت	المستشفى العسكري المركزي في بيروت Hôpital Militaire Central
-------	---

المختبرات المؤهلة لأخذ عينات "المسحات الأنفية" بطريقة Drive- thru

بيروت	مختبر ميديكال دياغنوستيك تريتمان سنتر (الحمراء) Medical Diagnostic Treatment Center (MDTC)
بيروت	مختبر ميد لآب MedLab SAL CIC ALS (الحمراء – الجبلان)
بيروت	مختبرات عيتاني Itani Medical Laboratories (المزرعة)
الأشرافية	مختبر أ ب سي ABC Laboratories
الشياح	مختبرات معوض الطبية Mouawad Medical Laboratory
الشياح	مختبرات الشياح (د. فؤاد ربحان) Rihan Medical Center
المنصورة	مختبر إكسبرت لآب Expert Lab
بعلبك	مختبر لايف لآب Life LAB
رياق	مستشفى الرياق Riyak Hospital

المختبرات الخاصة المؤهلة لإجراء التشخيص المخبري للفيروس كورونا بطريقة RT-PCR

الموقع	المختبر
بيروت	مستشفى الجامعة الأميركية AUBMC
بيروت	مستشفى أوتيل ديو الجامعي Hotel-Dieu de France (HDF)
بيروت	مختبرات رودولف ميريو (الجامعة اليسوعية – المتحف) Laboratoire Rodolphe Mérieux (Université Saint-Joseph)
بيروت	مستشفى القديس جاورجيوس الجامعي Saint-George Hospital - UMC
بيروت	مستشفى المقاصد Makassed General Hospital
بيروت	مستشفى رزق الجامعي LAU Medical Center - Rizk Hospital
بيروت	مستشفى اللبناني الجعيتاوي الجامعي Hôpital Libanais Geitawi - CHU
بيروت	مستشفى الوردية Hôpital Notre-Dame du Rosaire
بيروت	مختبر مركز الأطباء Doctor 's Center
بيروت	مختبر فونتا (الحمراء) Fontana Laboratories
بيروت	مختبر الأمن العام (العدنية)
بيروت	مختبرات جبر وغرة Laboratoire Jabre-Ghorra
بيروت	مختبر السان مارك Saint Marc Medical & Diagnostic Center
الغيري	المختبرات الحديثة Laboratoire Moderne (Modern Lab- Berjaoui)
الغيري	مستشفى الساحل Sahel General Hospital (SGH)
الغيري	مستشفى الزهراء الجامعي
برج البراجنة	مستشفى الرسول الأعظم Al Zahraa Hospital - UMC
حارة حريك	مستشفى بهمن Bahman Hospital Al Rassoul Al Aazam Hospital
حارة حريك	مختبر ناتيونال دياغنوستيك سرفيس كومباني National Diagnostic Services Company (NDSC)
المرجعة	مختبر الدكتور محمود عثمان - مركز التحاليل الطبية Medical Diagnostic Center
الجناح	مختبر أميريك دياغنوستيك سنتر American Diagnostic Center (ADC)
بعنا	مستشفى جبل لبنان Mount Lebanon Hospital
بعنا	مستشفى السان جورج الحدث Hôpital Saint-George – Hadath
بعنا	مختبر الهادي Al Hadi Laboratory
بعنا	مختبر INOVIE-Liban

Hôpital du Sacré- Coeur	مستشفى قلب يسوع	الحازمية
Clinigene	مختبر كلينيجان	الحازمية
Hôpital Dr.Samir Serhal	مستشفى سرحال	المن
Transmedical for Life	مختبر ترانسيميديكال فور ليف	المن
Haroun Hospital	مستشفى هارون	الزلفا
Bellevue Medical Center (BMC)	مستشفى بلفو	المنصورة
Hôpital Albert Haykal	مستشفى هيكال	الكورة
Centre Hospitalier du Nord (CHN)	مركز الشمال الاستشفائي	زغرتا
Mazloum Hospital	مستشفى المظلوم	طرابلس
Al Mounla Hospital	مستشفى المنلا	طرابلس
Nini Hospital	مستشفى النيني	طرابلس
LMSE – المعهد العالي للدكتوراه، الجامعة اللبنانية	مختبر ميكروبيولوجيا الصحة والبيئة	طرابلس
CHU - Notre-Dame des Secours	مستشفى سيدة المعونات الجامعي	جبيل
Lab Akiki & Boulos	مختبر عقيقي وبولس	جبيل
Centre Médical Wakim	مختبر واكيم	جونبة
Ain Wazein Hospital	مستشفى عين وزين	الشوف
Hammoud Hospital UMC	مستشفى حمود الجامعي	صيدا
Al Karim Medical Laboratory (KML)	مختبر الكريم	صيدا
Sheikh Ragheb Harb Hospital	مستشفى الشيخ راغب حرب	البيقنة
Sabbah Diagnostic Center (SDC)	مختبر السباح	البيقنة
Jabal Amel Hospital	مستشفى جبل عامل	صور
Mashrek Diagnostic Center (MDC)	مختبر المشرق	صور
Dar Al Amal University Hospital	مستشفى دار الأمل الجامعي	بعلبك
Khoury General Hospital	مستشفى خوري	زحلة
Medical Care Center (MCC)	مختبر ميديكال كير سنتر	زحلة