



Lebanon National Operations Room Daily Report on COVID-19

Wednesday, December 16, 2020

Report #273

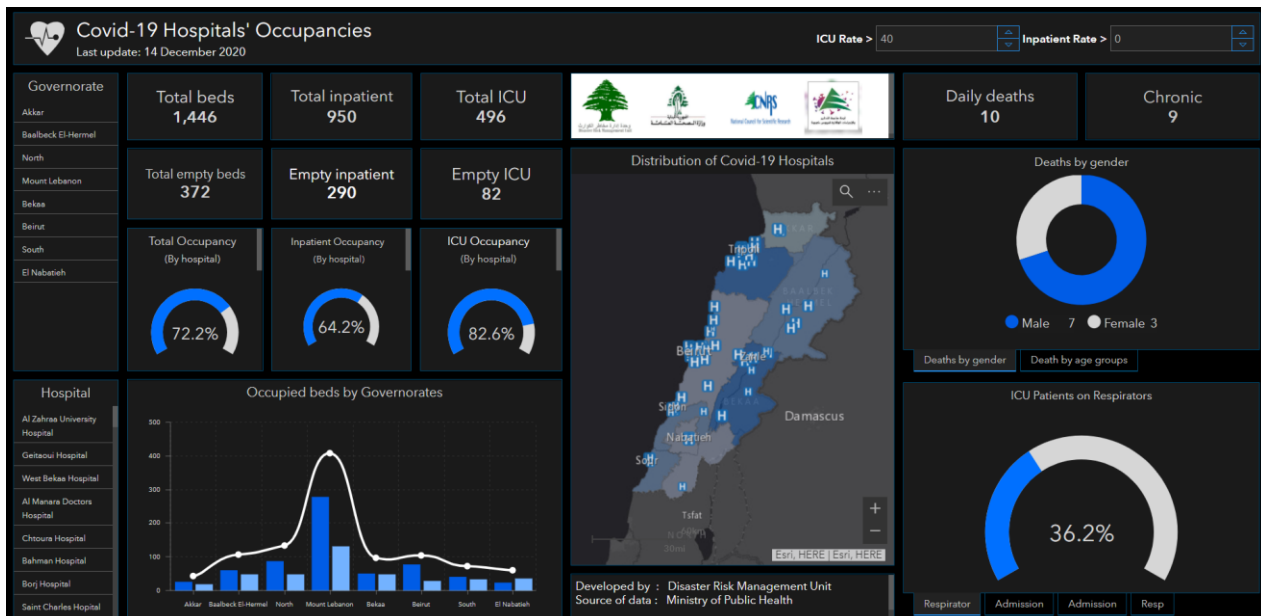
Time Published: 08:00 PM

New in the report: Recommendations issued by the meeting of the Committee for Follow-up of Preventive Measures and Measures to Confront the Coronavirus on 12/16/2020

2,056 New Cases		150,933 Total Cases since 21.2.2020		1,234 Total Deaths		105,212 Total Recovered	
2,008 Residents	48 Expats	147,838 Residents	3,095 Expats	11 New Deaths		1,005 New Recovered	
114 Deleted Status due to its recurrence	1,868 Total Cases in the Health Sector		44,487 Total Active Cases	1001 Hospitalized Cases			
12.3% AVG Positivity rate	19 Cases in the Health Sector		43,486 Cases in Home Isolation	151 Ventilated Cases	3 New Cases in ICU	409 Total cases in ICU	592 Mild cases
1,679,001 COVID-19 Tests since 21.2.2020		Lebanon Status compared to the World					
1260 COVID-19 Tests at Airport within 24 hrs.	14,203 COVID-19 tests for residents within 24 hrs.	Total Cumulative		150,933		73,452,304	
		Total Deaths		1,234		1,633,936	
		Deaths percentage		0,81%		2.23%	
		Total recoveries		105,212		51,542,762	

Ref: Ministry of Public Health Data

Occupancy rate of COVID-19 Beds and Availability



For daily information on all the details of the beds distribution availability for Covid-19 patients among all governorates and according to hospitals, kindly check the dashboard link:

Computer : <https://bit.ly/DRM-HospitalsOccupancy-PC> Phone: <https://bit.ly/DRM-HospitalsOccupancy-Mobile>

Distribution of Cases by Villages

Beirut	160	Baabda	263	Maten	264	Chouf	111	Kesrwen	112	Aley	121
AIN MRAISSEH	6	CHIAH	9	BORJ HAMMOUD	13	DAMOUR	1	JOUNIEH SARBA	6	AMROUSIYE	2
AUB	1	JNAH	2	SINN FIL	9	SAADIYAT	2	JOUNIEH KASLIK	5	HAY ES SELLOM	9
RAS BEYROUTH	5	OUZAAI	2	JDAIDET MATN	12	CHHIM	12	ZOUK MKAYEL	14	KHALDEH	2
MANARA	2	BIR HASSAN	1	BAOUCHRIYEH	12	KETERMAYA	4	NAHR EL KALB	1	CHOUFIAT OMARA	15
QREITEM	3	MADINE RIYADIYE	1	DAOURA	7	AANOUT	2	JOUNIEH GHADIR	4	DEIR QOUBEL	2
RAOUCHEH	5	GHABAYREH	9	RAOUDA	8	SIBLINE	1	ZOUK MOSBEH	16	AARAMOUN	17
HAMRA	8	AIN ROUMANE	11	SAD BAOUCHRIYE	1	BOURJEIN	4	ADONIS	3	BAAOUMERTA	1
AIN TINEH	2	FURN CHEBBAK	3	SABTIYEH	7	BARJA	14	HARET SAKHR	8	BCHAMOUN	10
MSAITBEH	6	HARET HREIK	54	DEKOUANEH	13	BAASSIR	6	SAHEL AALMA	4	AIN AANOUB	1
OUATA MSAITBEH	1	LAYLAKEH	5	ANTELAS	16	JIYEH	3	ADMA W DAFNEH	2	BLAYBEL	4
MAR ELIAS	4	BORJ BRAJNEH	26	JALL DIB	7	JADRA	3	SAFRA	4	BDADOUN	2
UNESCO	1	MREJEH	8	ZALQA	10	OUADI EZ ZAYNI	2	AAQAYBEH	5	BSOUS	2
TALLET KHAYAT	2	TAHOUTA GHADIR	3	BYAQOUT	7	DEIR EL QAMAR	1	AAJALTOUN	2	AALEY	14
DAR FATWA	1	BAABDA	6	DBAYEH	6	SEMQANIYEH	1	BALLOUNEH	9	KAHHALEH	3
ZARIF	5	HAZMIYEH	9	MAZRAT AOUKAR	2	MAZRAT DOUAIR	2	SHAYLEH	2	AAAYTAT	2
MAZRAA	6	FAYADIYEH	1	MANSOURIYEH	9	KFAR FAQOUD	2	JAITA	3	SOUQ EL GHARB	1
BORJ ABO HAIDAR	5	MAR TAQLA	2	DAYCHOUNIYEH	1	DEIR BABA	1	AINTOURA	2	MEIDLAIYA	3
BASTA FAOUQA	3	RIHANIYEH	2	FANAR	3	KFAR HIM	3	GHAZIR	5	RIMHALA	1
TARIQ JDIDEH	11	HADATH	32	AIN SAADEH	9	DMIT	1	KFAR HBAB	1	QABR CHMOUN	1
RAS NABAA	4	BOUTCHAY	3	ROUMIEH	7	BRIH	2	MAARAB	1	AIN KSOUR	1
BACHOURA	1	LOUAYZEH	1	BSALIM	4	MGHAYREH	1	AARAMOUN	2	AABEY	1
BASTA TAHTA	4	JAMHOUR	2	NABAY	1	BAAQLINE	8	NAMMOURA	1	KFAR MATTA	1
ZOQA BLAT	1	KFAR CHIMA	3	MTAYLEB	1	GHAIRIFEH	1	DARAAOUN	1	BHAMDOUN	1
GEMMAIZEH	2	OUADI CHAHRUR	1	RABIYEH	2	BOTMEH	1	ZAAITREH	1	MAJDEL BAANA	3
GEITAWI	1	CHAHROUR	3	BEIT KEKKO	1	BEQAATA	7	YAHCHOUCH	2	SOUFAR	4
MAR MIKHAYEL	1	BSABA	4	QORNE CHEHOANE	6	NIHA	5	QLEIAAT	3	BAATER	1
KHODR	1	BAALCHMAY	6	RABOUEH	6	AIN OUZAIN	1	AACHQOUT	3	AZZOUNIYEH	1
JISR	1	RUAYSE BALOUT	1	BEIT ECH CHAAR	9	AAMMATOUR	1	KFAR DIBIANE	1	RAMLIEH	1
RMEIL	2	HLALIYEH	3	DIK MEHDI	3	KAHLOUNIYEH	2	HRAJEL	1	MAASRITI	1
ACHRAFIYEH	32	AABADIYEH	2	MAZRAT YACHOUA	7	MAZRA	1	AKKAR	101	AIN DARA	1
AADLYEH	3	DHOUR ABADIYE	1	DEIR TAMICH	1	KFAR NABRAKH	6	NAHR EL BARED	2	OTHER	13
OTHER	30	RAS MATN	9	ZAKRIT	2	BATLOUN	1	HALBA	7	ZAHLE	159
JBEIL	67	QOBBAYAA	1	BIKFAYA	2	JBAA	1	JDAIDET JOUMEH	2	ZAHLEH RASSIYEH	1
JBEIL	8	QORTADA	1	BEIT CHABAB	1	BATER	1	DAOURA	2	EL BERBARA	1
MASTITA	9	DEIR HARF	1	MAYASSEH	5	BAROUK	1	ZOUARIB	1	EL MAALLAQA	6
BLAT	4	SALIMA	2	AIN KHARROUBEH	3	OTHER	6	MINYARA	3	KARAK NOUH	5
KFAR ZBOUNA	1	HASBAYYA MATN	1	HIMLAYA	2	BATROUN	14	KARM AASFOUR	4	MAR ANTONIOS	2
AAMCHIT	7	HAMMANA	3	AIN AALAQ	2	BATROUN	3	MACHHA	1	MAALLAQA ARADI	2
HALATE	3	CHBANIYEH	1	AATCHANEH	2	KFAR AABIDA	1	BQERZLA	5	HAOUCH OUMARA	1
RIHANEH	1	BTEKHNAI	2	AIN ET TEFFAHA	1	CHIKKA	5	BORJ EL AARAB	1	HAOUCH OUMARA	4
NAHR IBRAHIM	3	FALOUGHA	2	CHIRINE	2	CHIKKA AATIQA	1	TIKRIT	1	ZAHLEH ARADI	6
EHMEJ	3	QORNAYEL	10	QORNET HAMRA	7	IJDABRA	1	CHAQDOUF	1	FOURZOL	7
ADONIS	1	ARSOUN	1	BROUMMANA	9	AABRINE	1	BEZBINA	1	TOUAYTEH	1
BRAYJ	1	KFAR SELOUANE	2	QENNABET	2	HAMAT	1	AAKKAR AATIQA	4	NABI AYLA	1
AABAYDAT	3	OTHER	11	BAABDAT	3	DEIR BILLA	1	TALL AABBAS	1	HAZERTA	2
BEJEH	1	KOURA	37	DAHR ES SOUANE	1	MINIEH DENIEH	36	HAYSSA	1	ABLAH	2
GHALBOUN	2	AMIOUN	1	BOLONIA	1	DEIR AAMMAR	2	CHEIKH AAYACHE	1	QAA ER RIM	1
HBOUB	2	KFAR SAROUN	1	MARJABA	1	NABI YOUNCHEAA	1	MASSAOUUDIYEH	1	NIHA	3
HSARAT	9	BZIZA	1	KHINCHARA	2	MINIEH	14	TALL MEAAYANE	1	KSARA	9
GHORFINE	3	KFAR HAZIR	2	AINTOURA	1	BHANNINE	1	KHIRBEH	1	CHTAURA	1
QARTABA	1	BSARMA	1	DHOUR ECH CHOUER	1	SIR ED DANNIYEH	5	CHEIKH ZENNAD	1	JALALA	2
LAQLOUQ	1	KOUSBA	1	CHOUJAYA	1	BQARSOUNA	1	BEBNINE	3	TAALABAYA	2
TARTUJ	3	AABA	1	BASKINTA	5	TARANE	1	MHAMMARA	1	JDITA	2
OTHER	1	BEDNAYEL	1	OTHER	8	IZAL	1	AABDEH	1	SAADNAYEL	3
TRIPOLI	57	KFAR QAHEL	1	ZGHARTA	51	KFAR HABOU	2	BERQAYEL	2	QABB ELIAS	2
TRABLOUS ZEITOUN	8	BTOURATJ	1	ZGHARTA	15	BAKHAOOUN	7	HOUAICH	1	BARR ELIAS	8
TRABLOUS ET TALL	2	ENFEH	4	AARDAT	1	OTHER	1	BEIT AYOUB	1	AANJAR	2
EL QOUBBEH	11	RAS MASQA	8	KFAR DLAQOUS	1	BAALBACK	138	JDAIDET EL QAYTEAA	1	MAJDEL AANJAR	5
TRABLOUS ZAHRIYEH	1	DAHR EL AIN	8	KACHAAINE	6	BAALBEK	36	FNAYDEQ	3	MASNAA	1
TRABLOUS TABBANEH	1	NAKHLIYEH	1	KFAR HATA	1	CHRAOUNEH	1	MAIDALA	2	RIYAQ	10
TRABLOUS JARDINS	4	OTHER	5	ARDEH	3	DOURIS	5	RAHBEH	2	AALI EN NAHRI	4
MINA	7	BCHAREH	6	HARF (ARDEH)	4	IAAT	2	SINDIANET MAJDEL	1	DEIR EL GHAZAL	1
QALAMOUN	3	BCHARREH	3	MEJDLAIYA	4	NAHLEH	2	BIREH (AAKKAR)	2	QOUSSAYA	2
BEDDAOUI	7	AABDINE	1	HARET EL FAOUAR	1	SAAIDEH	1	KOUACHRA	1	RAAIT	4
OTHER	13	TOURZA	1	AALMA	1	KFAR DANE	1	MACHTA HAMMOUD	1	HARET EL FIKANI	1
SOUR	53	HADATH EJ JOUBBEH	1	AAQABEH (AALMA)	1	NABI RCHADEH	1	MACHTA HASSAN	1	TERBOL	5
SOUR	15	RACHAYA	12	HOUAKIR	1	FEKEHEH	1	DAQUSSA	2	KFAR ZABAD	2
JALL EL BAHR	2	RACHAIYA EL OUADI	4	DARAIYA	1	AIN (BAALBEK)	2	AAIDAMOUN	3	OTHER	5
SOUR ER RACHIDIYEH	1	RACHAIYA FAOUQA	1	KARM SADDEH	1	AARSAL	2	AANDQET	1	WEST BEKAA	1
BORJ ECH CHEMALI	3	RACHAIYA MIDANE	1	QOUZHAYA	1	LABOUEH	2	OUADI KHALED	3	SAGHBINE	1
JOUAIYA	2	AAYHA	1	SERAAAL	1	TAOUFIQIYEH	3	AKROUM	2	KHIRBET QANAFAR	1
QANA	1	KFAR DENIS	1	MIRIATA	1	CHAAT	7	OTHER	25	KEFRAIYA	1
MAARAKEH	3	RAFID	1	KEFRAIYA	3	YOUNINE	1	SAIDA	35	AANA	5
MAAROUB	1	AIN AARAB	1	MAZRAAT HRAIQESS	1	DEIR EL AHMAR	1	SAIDA EL QADIMEH	4	AAMMIQ	1
JENNATA	2	OTHER	2	OTHER	3	BEDNAYEL	6	HARET SAIDA	5	JOUBB JANNINE	1
SADDIQINE	2	NABATIYEH	54	HERMEL	7	QSARNABA	5	AIN EL HELOUEH	1	LALA	1
HANAQUAY	5	NABATIYEH ET TAHTA	2	HERMEL	6	TEMNINE FAOUQA	2	MAJDELYOUN	4	KAMED EL LAOUZ	5
TAYR DEBBA	1	MANSOURA	1	NASRIYEH	1	BEIT CHAMA	3	QRAIYEH	1	BAALOUL	1
CHEHABIYEH	2	NABATIYEH FAOUQA	1	BINT JBEIL	23	HAOUCH ER RAFQA	3	AIN ED DELB	1	GHAZZEH	4
TAYR FALSAY	1	KFAR JAOUZ	4	BENT JBAYL	1	TEMNINE ET TAHTA	4	GHAZIYEH	5	QARAOUN	15
AABBASSIYEH	4	ZIBDINE	1	AIN EBEL	1	CHMISTAR	7	KHARAYEB	1	MANARA	2
CHAAITIYEH	1	KFAR ROUMMANE	4	RMAYCH	1	HAOUCH EN NABI	1	AADLOUN	2	SAOUIRI	1
BORJ RAHHAL	1	HABBOUCH	2	AAAYTA ECH CHAAB	1	TARAYA	7	LOUBIEH	1	SOHMOR	2
QLAILEH	1	KFAR TIBNIT	2	JMAIJMEH	1	SERRAINE TAHTA	1	GHASSANIYEH	1	MARJ	1

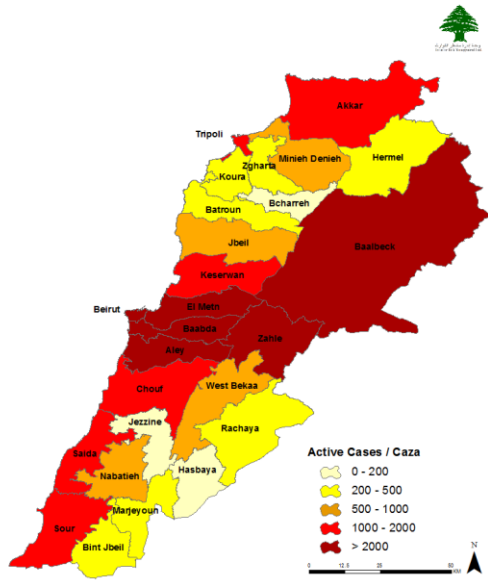
All reports and related decisions can be found at: <http://drm.pcm.gov.lb>

Or social media @DRM_Lebanon

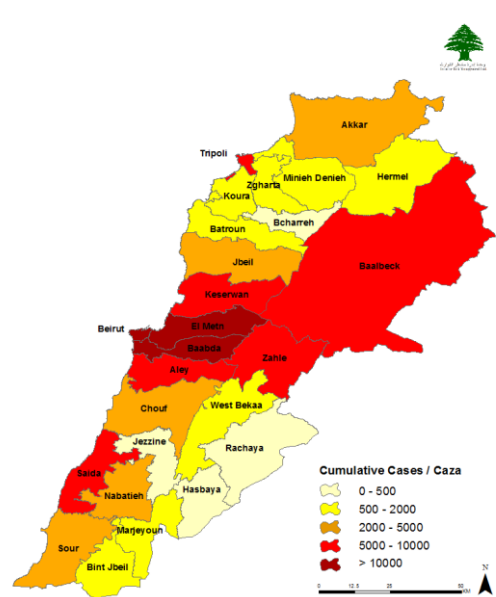
MAJDEL ZOUN	2	AIN BOU SOUAR	1	DEIR NTAR	3	SERRAINE FAOUQA	4	KAOUTHARIYE SIYAD	1	OTHER	1
OTHER	3	AIN QANA	1	KFAR DOUNINE	1	TALIA	1	SAKSAKIYEH	1	HASBAYA	23
		HOUumine FAOUQA	1	MARJEYOUN	14	HIZZINE	1	MEROUANIYEH	1	HASBAIYA	6
		AARAB SALIM	2	DIBBINE	1	KHODR	4	KFAR HATTA	2	AIN JARFA	1
		ROUMINE	1	QLAIAA	1	NABI CHIT	4	OTHER	4	FARDIS	1
		AAZZI	1	DEIR MIMAS	1	BRITAL	6	JEZZINE	3	HEBBARIYEH	1
		ZEFTA	1	TAYBEH	1	BOUDAY	4	JEZZINE	2	CHOUAYA	3
		CHARQIYEH	1	TALLOUSSA	3	OTHER	7	ANANE	1	MIMESS	6
		TOUL	2	MEISS EJ JABAL	1					MARJ EZ ZOUHOUR	4
		HAROUF	1	QANTARA	1					KFAR CHOUBA	1
		DOUAIR	2	SOUANEH	4					OTHER	149
		JIBCHIT	2	BLIDA	1						
		MAYFADOUN	1								
		AABBA	4								
		INSAR	5								
		QSAIBEH	1								
		QAAQAIYET EJ JISR	1								
		YOHMOR	2								
		SIR EL GHARBIYEH	2								
		OTHER	5								

Distribution of Active and Cumulative Cases

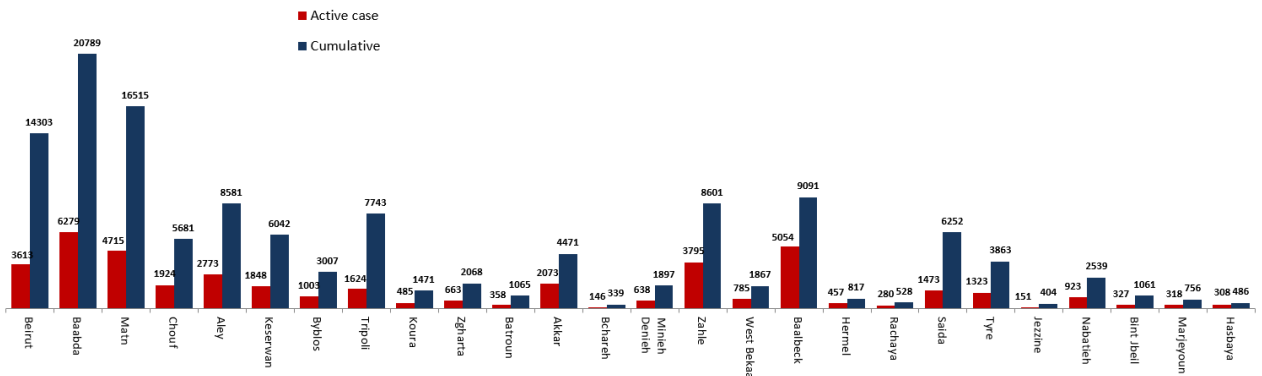
Distribution of Active Cases



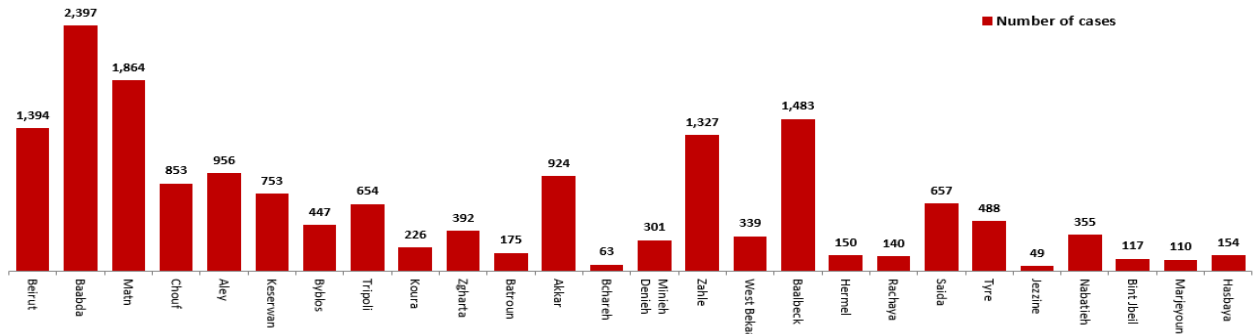
Distribution of Cumulative Cases



Number of Cases by Location



Number of cumulative cases for the last 14 days



All reports and related decisions can be found at: <http://drm.pcm.gov.lb>

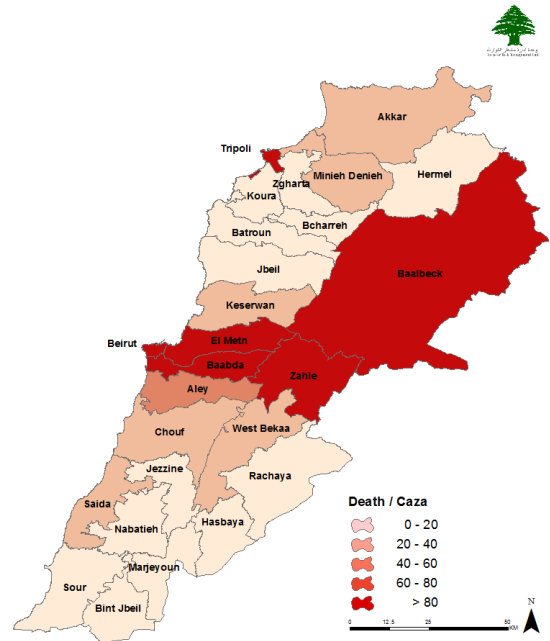
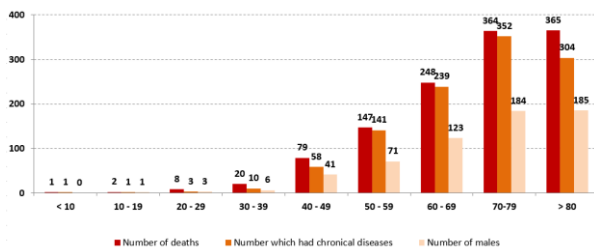
Or social media @DRM_Lebanon

Distribution of Death Cases

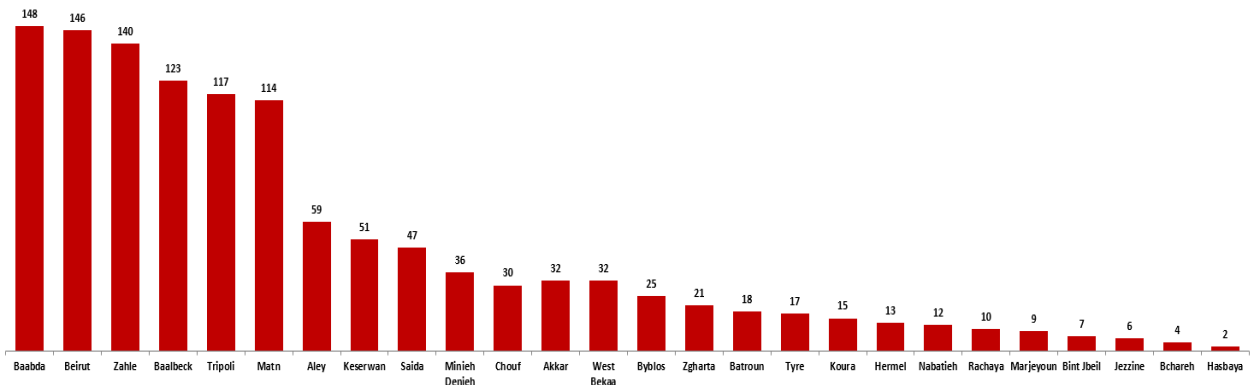
Distribution of deaths during the past 24 hours

Hospital	Residence	Gender	Age	Chronic
Al Rayan	West Bekaa	Male	60	Yes
Al Rayan	West Bekaa	Male	70	Yes
Tripoli Gov.	Tripoli	Male	39	Yes
Harire Gov.	Baabda	Male	35	No
Notre Dame	Keserwan	Female	74	Yes
Notre Maritime	Keserwan	Male	70	Yes
Riyak	Baalback	Male	60	Yes
Riyak	Zahle	Female	77	No
Jeataoui	Maten	Male	92	No
Jeataoui	Zahle	Female	66	Yes
Al Jabal	Baabda	Male	75	Yes

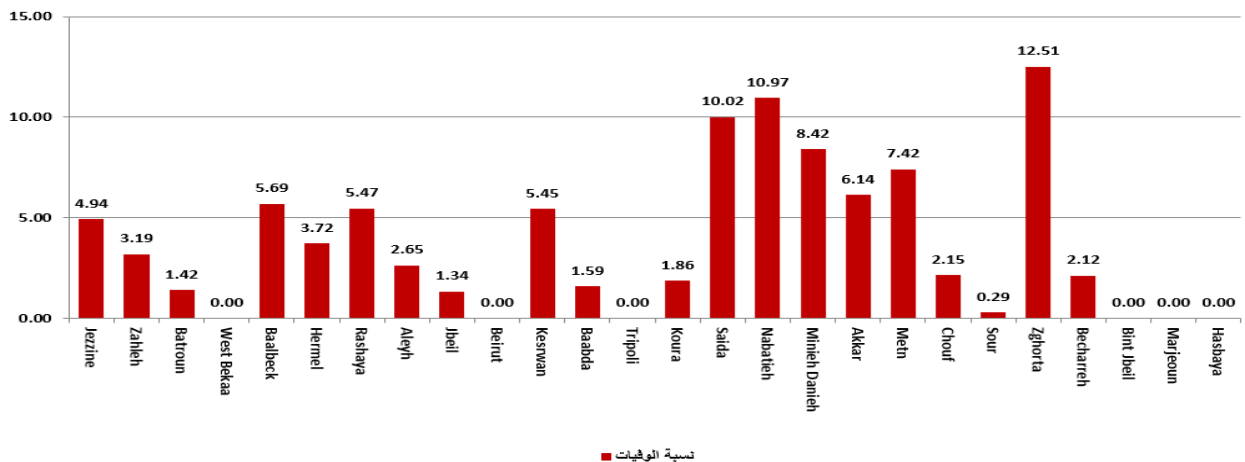
Distribution of deaths by Age Groups



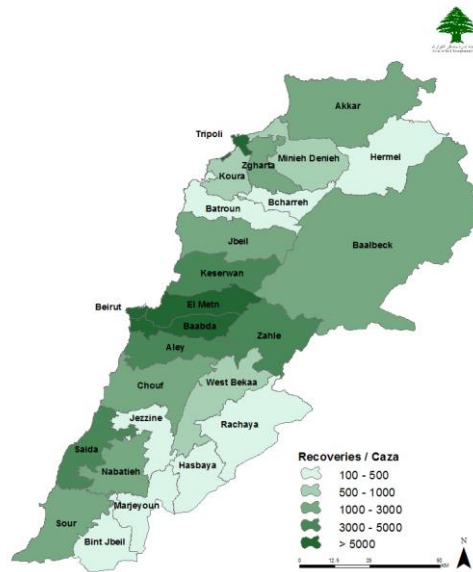
Distribution of deaths by Governorates



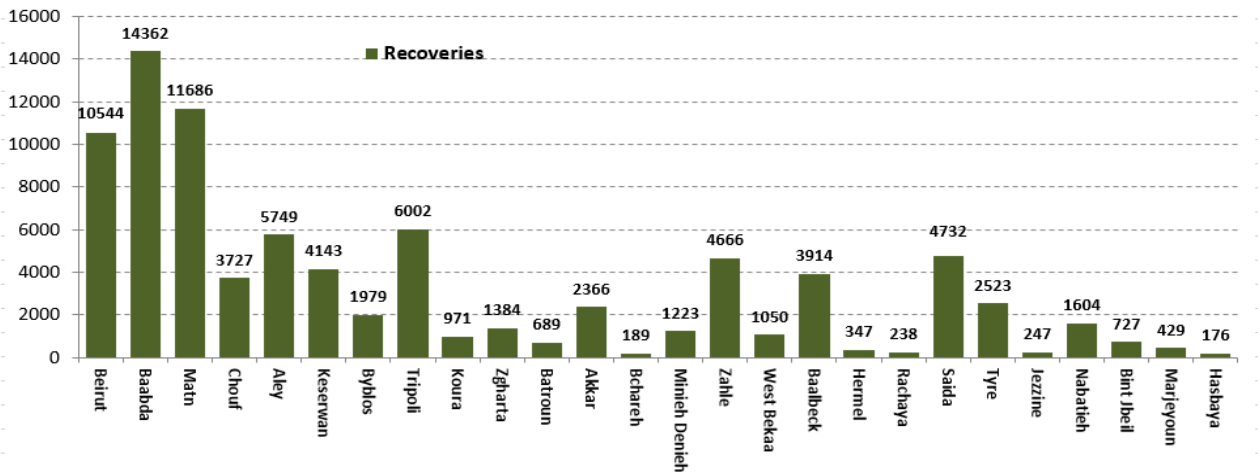
Distribution of mortality rate for the last 14 days



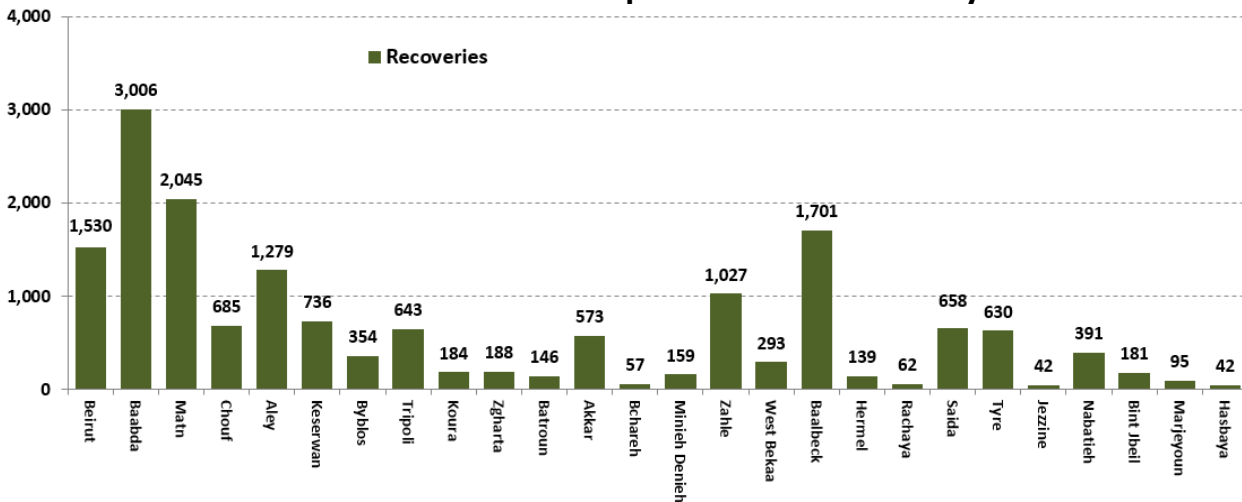
Distribution of Recoveries



Distribution of Recoveries per Casa



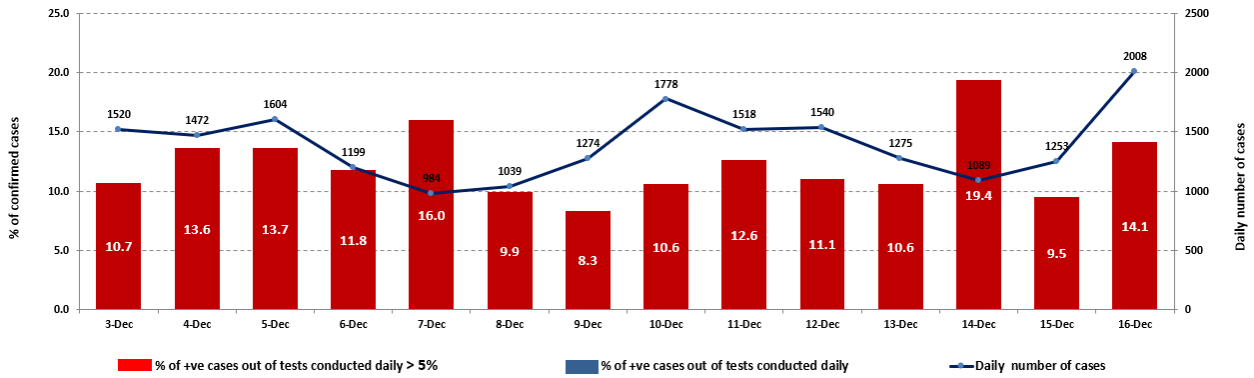
Distribution of Recoveries per Casa in the last 14 days



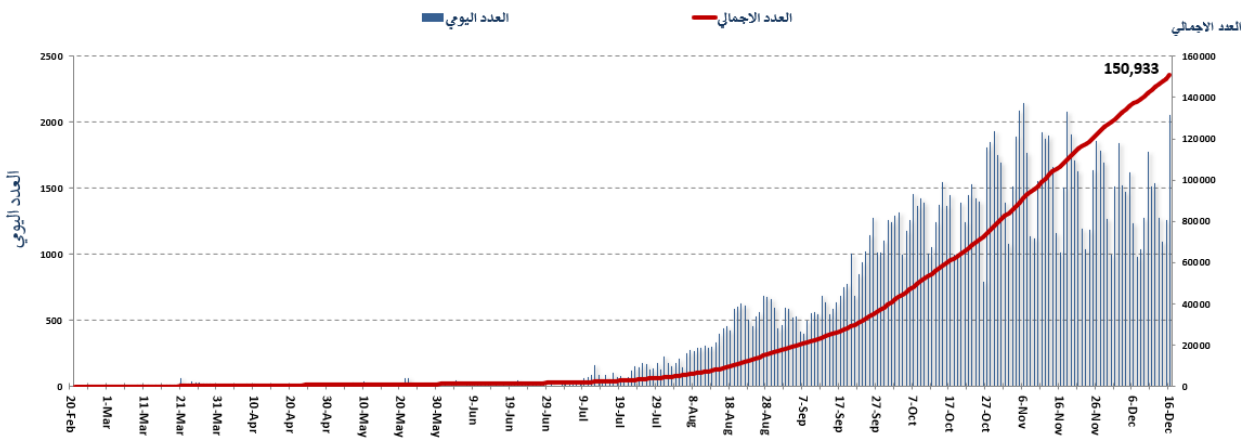
All reports and related decisions can be found at: <http://drm.pcm.gov.lb>

Or social media @DRM_Lebanon

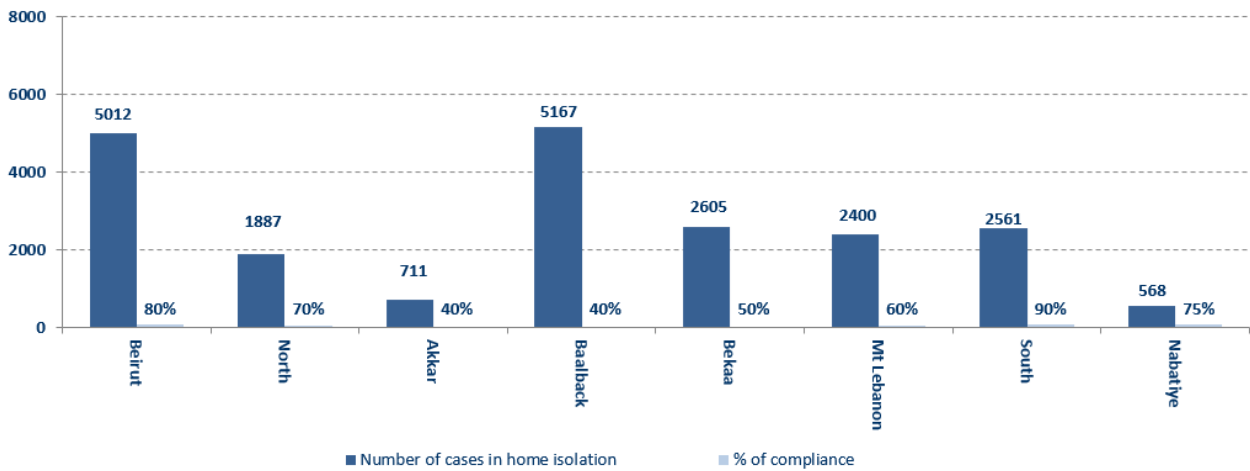
The percentage of positive cases out of the number of daily tests (03 Dec– 16 Dec,2020)



Cumulative cases per day



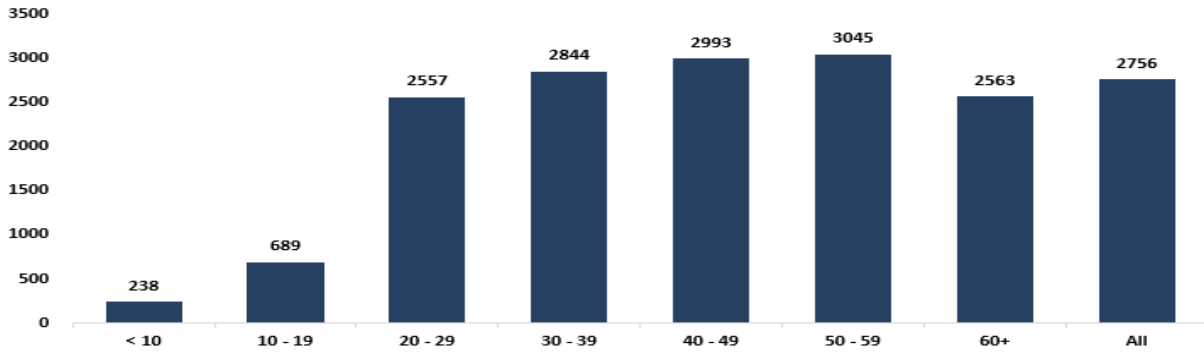
Number of individuals in home isolation and percentage of commitment to isolation



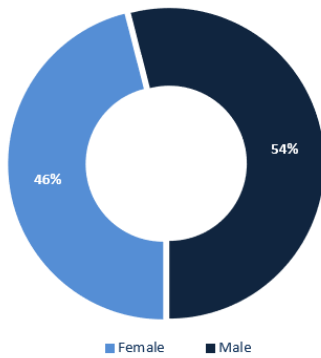
All reports and related decisions can be found at: <http://drm.pcm.gov.lb>

Or social media @DRM_Lebanon

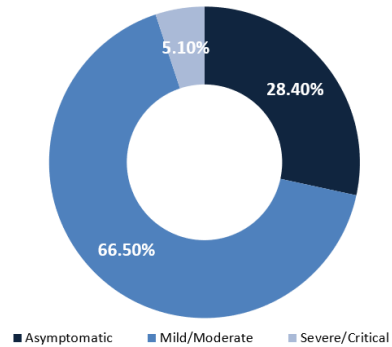
Age-Specific Cumulative Incidence rate (/100000)



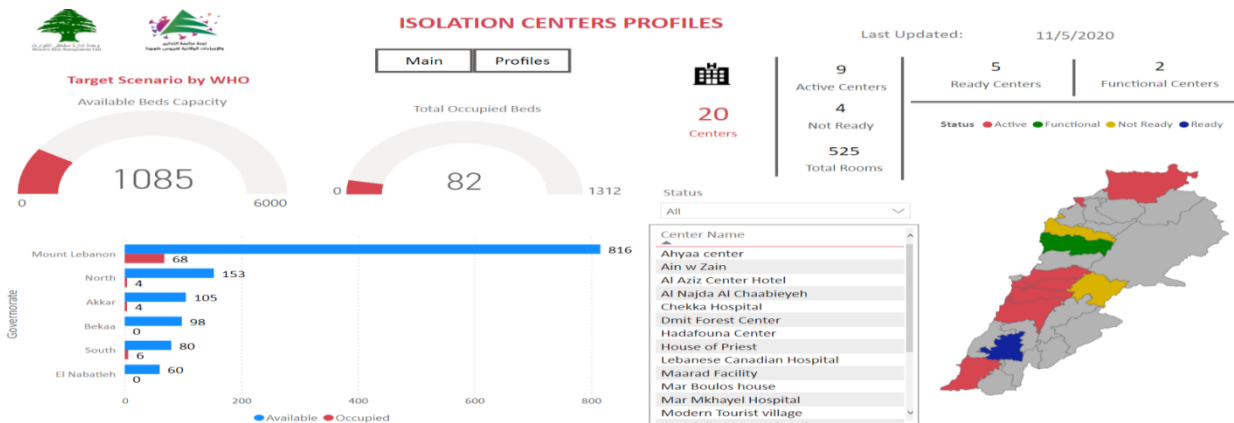
Distribution of cases by gender



Distribution of cases by Status



Occupancy rate of isolation centers for cases infected with Corona virus



For more information about the isolation centers' distribution and the percentage of their occupancy, enter the following link: <http://bit.ly/DRM-IsolationCentersProfiles>

All reports and related decisions can be found at: <http://drm.pcm.gov.lb>

Or social media @DRM_Lebanon

Decisions and actions taken – 12/16/2020

Ministry of Public Health

- The Ministry of Health announced that discussions were held with the Union of Mutual Health Funds in Lebanon about scientific and realistic proposals to face the exceptional difficult circumstances in the field of hospitalization and the relationship with hospitals and service providers.

Lebanese Red Cross

Cases transferred to the hospital	10,206 (67 New)	Ambulance centers	48	Number of additional ambulance centers ready to respond	59,943	Number of PCR tests transferred to laboratories	240,171
Number of being benefitting from awareness sessions	116,576 (401 New)	total number of respondents	8,889	Number of trained paramedics	1,498	Number of volunteers trained to transfer PCR tests	166
Number of trained managers for isolation centers	8,847	total LRC volunteers for covid 19	550	Number of university volunteers trained to conduct awareness sessions	310	The number of university volunteers trained to follow up on prevention measures in companies and institutions	967
Number of prisons that has been disinfected	1,012	Total distributed posters, brochures, and flyers on covid19 prevention	1,261,982	Number of distributed equipment	263,876	Number of beneficiaries from educational electronic platforms COVID-19	4,789 (3 New)

Lebanese Army Forces

- The army units continue to distribute social aid (400,000 Lebanese pounds) to families with limited income in all Lebanese territories.
- Distributing food aid in various Lebanese regions through the CIMIC Office.
- Establishing circumstantial barriers in various regions and supporting the Internal Security Forces in implementing the general closure decision in the country

General Directorate of Internal Security Forces

- The Internal Security Forces in all governorates and regional directorates organized patrols and circumstantial checkpoints
- The minutes that were written against the violators of the decisions of the general mobilization during the past 24 hours were distributed as follows:

The number of seizure records during the past 24 hours					The total number of records since 03/08/2020		
Written records of cars that violate curfew decision					0	Beirut	37,699
Written records of violating institutions					10	Mount Leb	41,368
Written records of persons violating the decision to wear a mask					49	Begaa	16,273
Total					59	North	13,456
Beirut	Mount Leb	Begaa	North	South	South	13,182	
35	24	0	0	0	Total	122,069	

General Directorate of State Security

- Reporting the number of new positive cases in the various governorates and districts, and the cases in home quarantine.

All reports and related decisions can be found at: <http://drm.pcm.gov.lb>

Or social media @DRM_Lebanon

- Follow up the procedures performed by medical teams at the arrival's examination centers at the airport and at border crossings.
- The report of a death in a woman in the Batroun district due to the Corona virus.
- Reporting on the decision of the North Lebanon Governor to isolate the town of Kfardelkous for a period of one week, starting December 10, 2020

General Directorate of General Security

- Carrying out patrols in the various governorates to follow up on the implementation of the general mobilization decision and alerting citizens to abide by preventive measures.
- Reporting that a large number of commercial establishments did not adhere to the preventive measures.
- Reporting the cumulative number of positive cases in the districts.
- Notification of the percentage of compliance with the general mobilization decision in the governorates, which came as follows within the past 24 hours:

Beirut	South	North	Akkar	Beqaa	Nabatiyeh	Baalbek Hermel	Mount Leb
75%	55%	40%	60%	55%	55%	50%	55%

Ministry of Public Works and Transportation

Beirut RaficHarriri International Airport:

Departing Flights		Arriving Flights	
Number of Flights	38	Number of Flights	38
Number of Departing Individuals	3,412	Number of Arrivals	4,682

Ports:

Port	Left			Entered		
	Export	Direction	#	Import	Direction	#
Beirut	Containers	Agio Theodori	1			
Total			1			

General Decisions / Announcements

On 12/16/2020, the Committee for the Follow-up of Preventive Measures and Measures of Coronavirus held a meeting headed by the Secretary-General of the Supreme Defense Council and an assessment of the reality of the epidemic spread in light of the current economic reality. According to the available data, the rate of increase in Coronavirus infections will increase by 25% due to the existence of Various social events, and accordingly, these are the most prominent recommendations issued:

- Amending working hours in the tourism sector, with an emphasis on commitment to preventive measures
- The Ministry of Information should organize targeted media campaigns that clarify the necessity of adhering to preventive measures
- The epidemiological surveillance program at the Ministry of Public Health shall deposit the committee daily a list of the dead bu Corona virus
- The Ministry of Health should present the mechanism for receiving, storing, distributing and using the vaccine to the Committee for Follow-up of Preventive Measures and Procedures for Coronavirus
- The Ministry of Tourism announced that whoever wants to hold a party, event or a festive gathering must fill out the form at the following link: eventregistry.net, in line with the decisions of the Ministerial Committee.

On 12/13/2020, the Ministry of Interior and Municipalities issued Resolution No. 1556 regarding the amendment of preventive measures and measures to confront the Corona epidemic, as it begins to be applied from the morning of 12/14/2020 until the morning of 12/21/2020, and the most prominent of what was mentioned in it:

- Determine the times of entry and entry into the streets between 23:30 until 5:00 in the next morning.
- Transport instructions for private and public vehicles and trucks.
- Opening times for the public sector and the economic and commercial sectors in all Lebanese regions.
- Allowing the holding of various social events under specific conditions, in addition to coordinating with the religious authorities in terms of organizing and determining the number of worshippers in places of worship.
- Setting specific conditions that allow restaurants, cabarets and bars to operate.
- Limiting the decision to open or close educational institutions and administrative units in all towns and villages to the Minister of Education and Higher Education.
- General provisions related to the numbers of people traveling by specific public and private means of transport, public prevention and safety measures, mandatory wearing of a mask, personal hygiene and especially hand washing, permanent sterilization and not overcrowding while maintaining distances between people and organizing roles on payment boxes.
- Exclusions related to movement and curfews (military personnel, health sector employees, workers in the diplomatic corps, media professionals, port employees, maritime agencies and the airport, in addition to the Electricity of Lebanon and Kadisha, water establishments and their service providers, mill workers, sweeping

All reports and related decisions can be found at: <http://drm.pcm.gov.lb>

Or social media @DRM_Lebanon

companies, waste collection and transportation, military vehicles, civil defense mechanisms, firefighting, municipal police and the cross) The Lebanese Red Army, ambulances and medical apparatus, the diplomatic corps, the United Nations, the media and the media, the lifts and the vehicles designated for transporting and towing cars, the vehicles designated for people with special needs and those with a card from the Ministry of Social Affairs, arrivals and departures, and those who take them to and from the airport, provided they have a copy of the travel ticket.

- The mandates of governors, mayors and district officials in implementing the decision.
 - The units of the General Directorate of Internal Security are strict in implementing this decision.
- Note: The full decision can be found at: <http://drm.pcm.gov.lb>

Examples of lack of adherence to safety measures

- Violations of the Ministry of Interior Decision No. 1432: promenade on the sea corniche, violations of authorized and single motor vehicle traffic, and violations of commercial establishments and stores that did not adhere to the decision.
- Failure to comply with the preventive measures and procedures required in a number of stores and markets (putting on a mask or face mask, sterilizing hands, maintaining a safe distance).
- Failure of those in contact with confirmed cases to adhere to home isolation procedures until the results of the laboratory tests are issued.

If you feel any symptoms, directly call the hotline of the Ministry of Public Health: 1214 or 01/59445

Laboratories that did not comply with the procedures approved by the MoPH About the information required to be recorded for infected cases within the past 24 hours

Laboratories that did not specify the Governorate

Laboratory/Hospitals	Cases
BDL003-Laboratoire Inovie / Fayyadieh	91
BDH505-Rafic Hariri University hospital	12
BDL006 - Beirut International Airport	10
BRL009 - Fontana Laboratories	7
BDL002-Hadi Laboratory/ Haret Hreik	6
BRH636-Hospital LAU Medical Center / Rizk	6
MTH548-Hospital Serhal / Rabieh	3
BDH558-Hospital Saint Georges Hadath	2
BRH610-Hospital American university	1
BRH630-Hospital Geitawi	1
BRH639-Hospital Saint Georges Orthodoxe	1
KWL001 - Wakim Laboratories	1
MTH510-Hospital Abou Jaoudeh / Jall Dib	1

Number of positive cases without specifying the place of residence

Laboratory/Hospitals	Cases
BDL003-Laboratoire Inovie / Fayyadieh	105
BDH505-Rafic Hariri University hospital	12
BDL002-Hadi Laboratory/ Haret Hreik	12
BDL006 - Beirut International Airport	10
BRL009 - Fontana Laboratories	7
BRH636-Hospital LAU Medical Center / Rizk	6
NBH316-Hospital Ragheb Harb	6
BDH562-Hospital Mont liban	5
BDH558-Hospital Saint Georges Hadath	3
BRH630-Hospital Geitawi	3
MTH548-Hospital Serhal / Rabieh	3

All reports and related decisions can be found at: <http://drm.pcm.gov.lb>

Or social media @DRM_Lebanon

BRD003-Saint Joseph, Achrafieh	2
BDH558-Hospital Sacre Coeur	1
BRH610-Hospital American university	1
BRH639-Hospital Saint Georges Orthodoxe	1
KWL001 - Wakim Laboratories	1
MTH510-Hospital Abou Jaoudeh / Jall Dib	1
SDH401-Hospital Saida Gouvernemental	1
SRL001 - Mashrek Medical Diagnostic Center	1
ZHH224-Hospital Libano-Francais / Zahleh	1

Number of positive cases without a phone number	
Laboratory/Hospitals	Cases
BDL002-Hadi Laboratory/ Haret Hreik	3
BRL007 - Doctors Center	1
CHH511-Hospital Ain wa Zain	1
BDH558-Hospital Saint Georges Hadath	1

A list of the laboratories accredited by the MoPH to conduct PCR tests

Governmental Labs

المختبر	الموقع	
RHUH	مستشفى رفيق الحريري الجامعي بيروت	
Halba Governmental	مستشفى حلبا الحكومي حلبا	
Tripoli Governmental	مستشفى طرابلس الحكومي طرابلس	
Batroun Governmental	مستشفى البترون الحكومي البترون	
Fetouh Keserwan	مستشفى فتوح كسروان الحكومي (البوار)	كسروان
Nabih Berri Hosp	مستشفى نبيه بري الحكومي الجامعي النبطية	
Tebnine Governmental	مستشفى تبنين الحكومي تبنين	
BintJbeil Governmental	مستشفى بنت جبيل الحكومي بنت جبيل	
Baalback Governmental	مستشفى بعلبك الحكومي بعلبك	
Elias Herrawi Governmental	مستشفى الرئيس الياس الهراوي الحكومي رحلة	

Private Labs

المختبر	الموقع
AUBMC	مستشفى الجامعة الأميركية بيروت
Hôtel Dieu de France	مستشفى أوتيل ديو الجامعي بيروت
Laboratoires Rodolphe Mérieux (Université Saint-Joseph)	مختبرات رودولف ميريو (الجامعة اليسوعية – المتحف) بيروت
George-Saint UMC Hospital	مستشفى القديس جاورجيوس الجامعي بيروت
General Makassed Hospital	مستشفى المقاصد بيروت
LAU Medical Center - Rizk Hospital	مستشفى رزق الجامعي بيروت
CHU - GeitawiLibanais Hospital	مستشفى اللبناني الجعيتاوي الجامعي بيروت
Hôpital Notre-Dame du Rosaire	مستشفى الوردية بيروت
Doctors' Center	مختبر مركز الأطباء بيروت
Fontana Laboratories	مختبر فونتانا (الحمرا) بيروت
General Security Laboratories	مختبر الأمن العام (العدلية) بيروت
Ghorra-Jabre Laboratories	مختبرات جبر وعرّة الأشرفية
Saint Marc Medical & Diagnostic Center	مختبر السانمارك الأشرفية

All reports and related decisions can be found at: <http://drm.pcm.gov.lb>

Or social media @DRM_Lebanon

Laboratories HML	مختبرات حداد	فرن الشباك
Laboratoire Moderne (Modern Lab.- Berjaoui)	المختبرات الحديثة	الغبيري
Sahel General Hospital (SGH)	مستشفى الساحل	الغبيري
Al Zahraa Hospital	مستشفى الزهراء الجامعي	الغبيري
	مركز النقاء الطبي	بئر حسن
Al Rassoul Al Aazam Hospital	مستشفى الرسول الأعظم	برج البراجنة
Bahman Hospital	مستشفى بهمن	حارة حريك
National Diagnostic Services Company (NDSC)	مختبر ناشيونال دياغنوستك سيرفس كومباني	حارة حريك
Center Diagnostic Medical	مختبر الدكتور محمود عثمان - مركز التحاليل الطبية	المريجة
ADC (Center Diagnostic American)	مختبر أميريكين دياغنوستك سنتر	الجناح
Mount Lebanon Hospital	مستشفى جبل لبنان	بعيدا
Hadath – George-Saint Hôpital	مستشفى السان جورج الحدث	بعيدا
Laboratory Al Hadi	مختبر الهادي	بعيدا
INOVIE	مختبر-Liban	بعيدا
Sacré - Coeur Hôpital	مستشفى قلب يسوع	الحازمية
Clinigene	مختبر كلينيجان	الحازمية
Dr. Samir Serhal Hospital	مستشفى سرحال	المتن
Life for Trans medical	مختبر ترانسيميديكال فور ليف	المتن
	مختبرات سان ميشال للتحاليل الطبية	المتن
	مختبر مركز الشرق الأوسط الصحي ش.م.ل.	المتن
Haroun Hospital	مستشفى هارون	الزلقا
Bellevue Medical Center (BMC)	مستشفى بلفو	المنصورية
Haykal Albert Hôpital	مستشفى هيكل	الكورة
Centre Hospitalier du Nord (CHN)	مركز الشمال الاستشفائي	زغرتا
Mazloum Hospital	مستشفى المظلوم	طرابلس
Al Mounla Hospital	مستشفى المنلا	طرابلس
Nini Hospital	مستشفى النبي	طرابلس
LMSE	مختبر ميكروبيولوجيا الصحة والبيئة، المعهد العالي للدكتوراه، الجامعة اللبنانية	طرابلس
Secours des Dame-Notre – CHU	مستشفى سيده المعونات الجامعي	جبيل
Boulos & Akiki Lab	مختبر عقيلي وبولس	جبيل
Wakim Centre Médical	مختبر واكيم	جونية
Hospital Wzein Ain	مستشفى عين وزين	الشوف
UMC Hospital Hammoud	مستشفى حمود الجامعي	صيدا
Al Karim Medical Laboratory (KML)	مختبر الكريم	صيدا
Hospital HarbRagheb Sheikh	مستشفى الشيخ راغب حرب	النبطية
SDC (Center Diagnostic Sabbah)	مختبر الصباح	النبطية
Jabal Amel Hospital	مستشفى جبل عامل	صور
Mashrek Diagnostic Center (MDC)	مختبر المشرق	صور
Hospital University Dar Al Amal	مستشفى دار الأمل الجامعي	بعلبك
	مختبرات العناية الطبية	بعلبك
	مختبرات العناية الطبية	اللبوة
Hospital General Khoury	مستشفى خوري	زحلة
MCC (Center Care Medical)	مختبر ميديكال كير سنتر	زحلة

مختبرات المستشفيات العسكرية

Hôpital Central Militaire	المستشفى العسكري المركزي في بيروت	بيروت
---------------------------	-----------------------------------	-------

المختبرات المؤهلة لأخذ عينات "المسحات الأنفية" بطريقة "Drive-Thru"

Medical Diagnostic Treatment Center (MDTC)	مختبر ميديكال دياغنوستك تريتماننت سنتر (الحمراء)	بيروت
ALS CIC SAL Med-Lab	مختبر ميد لاب الحمراء – الجفینور	بيروت
Itani Medical Laboratories	مختبرات عيتاني	بيروت
ABC Laboratories	مختبر أ ب سي	الأشرفية
Mouawad Medical Laboratory	مختبرات معوض الطبية	الشيخ
Rihan Medical Center	مختبرات الشيخ (د. فؤاد ریحان)	الشيخ
Lab Expert	مختبر إكسبرت لاب	المنصورية
LAB Life	مختبر لايف لاب	بعلبك
Rayyak Hospital	مستشفى رياق	رياق

All reports and related decisions can be found at: <http://drm.pcm.gov.lb>

Or social media @DRM_Lebanon

All reports and related decisions can be found at: <http://drm.pcm.gov.lb>

Or social media @DRM_Lebanon