



Lebanon National Operations Room Daily Report on COVID-19

New in the Report:

- New procedures related to all travelers coming to Lebanon.
- An online link to follow up on the number of beds available for people with Coronavirus in hospitals and the occupancy rate during the past 24 hours.
- An online link to monitor the commitment of different sectors to the general mobilization procedures.

Tuesday, September 15, 2020

Report #181

Time Published: 9:00 PM

25,449
Total registered cases since Feb.21

1,480 **23,969**
Leb Expats Locals

592
New Cases

2 **590**
Leb Expats Locals

637,906
Conducted PCR tests in labs since Feb.21

8,938
PCR tests conducted for locals in the last 24 hrs (in labs)

2,075
PCR tests conducted in airport in the past 24 hrs

252
Deaths

6
New Deaths

9,216
Recoveries

690
Cases registered among medical staff

12
Cases registered among medical staff in the past 24 hrs

15,981
(Active Cases)

15,545
In home Isolation

4
Mild Cases in the Past 24 hrs

6
In ICU in the past 24 hrs

436
Currently hospitalized

321
Cumulative Mild Cases

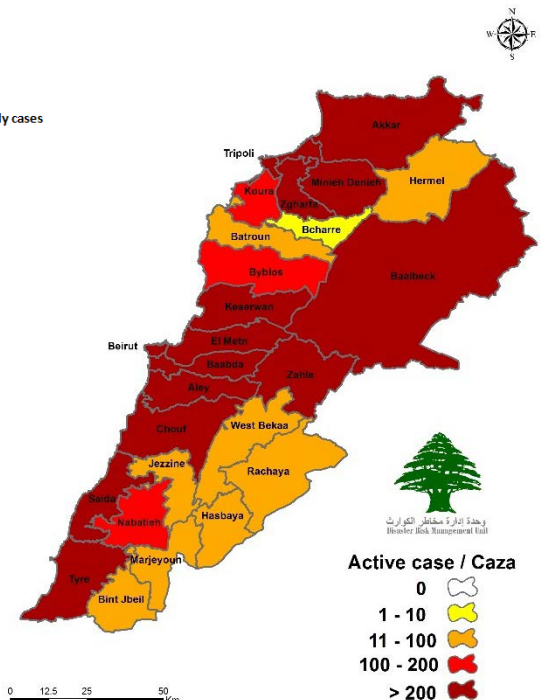
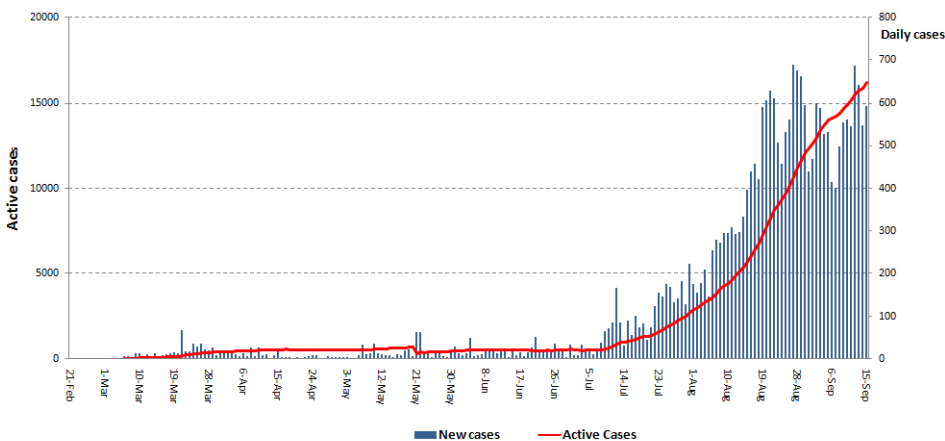
115
Cumulative In ICU

	Lebanon	Internationally
Total registered cases	25,449	29,528,746
Total deaths	252	934,251
Percentage of deaths	0.99%	3.16%
Number of recoveries	9,216	21,349,379

*The Above data was last updated at 10:00 PM

Number of Cases by Location

- 5690 case is Under investigation



Active case / Caza

- 0
- 1 - 10
- 11 - 100
- 100 - 200
- > 200



Beirut	Cases
Manara	2
Hamra	1
Ein El Teeneh	4
Mseitbeh	3
Mar Elias	3
Tallet El Khayat	2
Zarif	1
Mazraa	5
Tariq Jdeede	5
Borj Abi Haydar	1
Ras El Nabeh	4
Achrafieh	10
Others	14
Baabda	Cases
Chiah	4
Jnah	5
Ouzai	2
Bseba	1
Hammana	1
Arsoun	1
Bir Hassan	2
Fayadieh	1
Ghobeiry	4
Ein El Rimmaneh	5
Furn El Chibbak	1
Haret Hreik	5
Laylaki	2
Borj El barajneh	8
Mrejeh	9
Kfarshima	2
Hazmieh	1
Hadat	10
Others	2
Hermel	Cases
El Qasr	1
Saida	Cases
Saida El Wastani	1
Haret Said	2
Miyye W Miyye	1
Ein El Hilwe	4
Abra2	2
Zeita	1
Bnaafoul	1
Others	8
Tripoli	Cases
Qebbeh	6
Zehrieh	1
Mina	10
Kalamoun	1
Others	29
Zghorta	Cases
Zghorta	2
Majdlayya	2
Ehden	1
Kfar Hora	1
Meryata	1
Others	1

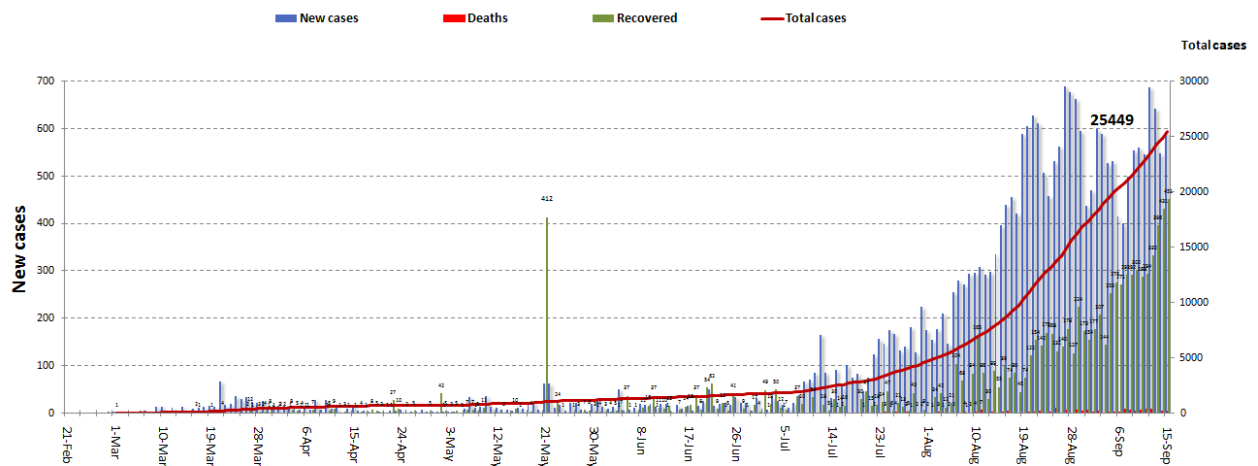
Matn	Cases
Borj Hammoud	2
Nabaa	3
Sin El Fil	3
Doura	2
Bouchrieh	1
Jdeidet El Metn	5
Beit El Chaar	3
Sabtieh	3
Dekwene	7
Jal El Deeb	1
Antelias	3
Naqqash	2
Zalka	2
Dbayeh	4
Mansouriyeh	3
Mkalles	1
Mazraat Deir Aoukar	1
Roumieh	67
Ein Saadeh	3
Ein Aar	1
Rabieh	1
Bekfayya	1
Mazraaet Yashouh	1
Baskinta	1
Kfar Akab	1
Mrouj	1
Others	3
Menyeh Dunnyyeh	Cases
Minyeh	2
Bhannin	2
Bqaa Sefreen	1
Beit El Faqs	1
Sfeera	1
Kfar Habo	1
Majeyoun	Cases
Others	1
Bcharre	Cases
Hadsheet	1
Marjouyon	Cases
Others	1
Rashaya	Cases
Ein Harsha	1
Ein Ata	1
Ayta El Fakhar	1
Others	1
Jbeil	Cases
Amshit	1
Mastita	2
Kartaboun	1
Blat	1
Meshmesh	1
Kfar Shabouh	1
Hboub	1
Beqaa El Gharby	Cases
Kherbet Kanafar	1
Jeb Jennin	1
Ghazzeh	1
Dakweh	1

Aleyh	Cases
EL Amrousiyyeh	2
El Oumara	9
Bsous	1
Khaldeh	5
Hay El Sillom	2
Aramoun	7
Bchamoun	2
Bsous	1
Kahale	1
Ein El Rimmeneh	1
Ein Dara	2
Others	3
Keserwan	Cases
Sarba	1
Jounieh - Ghadir	3
Adonis	1
Adma	1
Bouar	3
Ajaltoun	1
Sehayle	1
Eintoura	1
Kfar Hbab	1
Jdeidet Ghazir	1
Ghosta	1
Achkout	1
Others	1
Nabatieh	Cases
Serail	1
Shoukeen	1
Harouf	3
Jebheet	3
Adsheet El Shqeef	1
Seer El Gharbieh	1
Others	3
Jezzine	Cases
Rayhan	1
Ayshiyeh	1
Batroun	Cases
Shekka	2
Eddeh	1
Deir Bella	1
Bint Jbeil	Cases
Rmeish	2
Others	1
Zahle	Cases
Hosh El zaraaneh	1
Zahle El Maallaka	1
Hazzarta	1
Jlala	2
Makseh	1
Taalabaya	1
Majdel Anjar	1
Riyak	1
Reiet	2
Kfar Zabad	4
Others	1

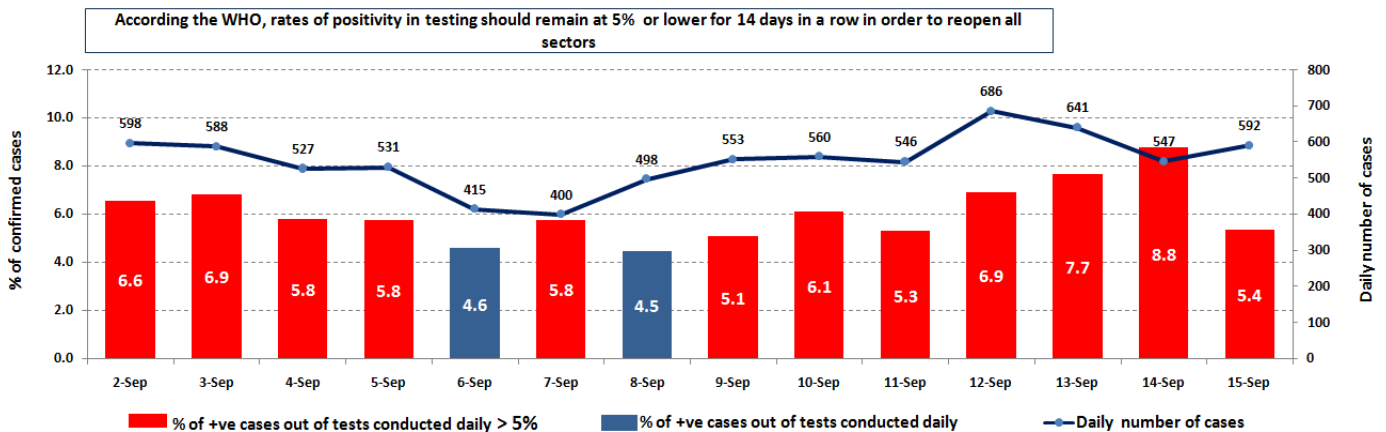
Baalbeck	Cases
El Bass	1
El Rasheedieh	2
Jouayya	1
Maarake	1
Chehabieh	2
El Qleileh	1
Omran	1
Others	2
Baalbak	Cases
Doures	1
Hadath	1
Nabe Rashada	1
Jdeidet El Fekha	1
Younin	2
Qasr Nabba	1
Beit Shama	1
Temnin El Tahta	3
hosh El Naby	1
Hezzine	1
Yahfoufa	1
Brital	2
Others	3
Chouf	Cases
Naameh	4
Haret El Naameh	1
Barja	2
Chehim	5
Damour	3
Daraya	1
Ketermaya	1
Baasir	1
Wady El Zayneh	1
Alman	1
Rmeile	1
Wardaniyeh	1
Joun	1
Shwaleeq	1
El Maouche	1
Niha	1
Ammatour	1
Kfarnabrakh	1
Btalloun	1
Others	4
Koura	Cases
Kosba	2
Diddeh	1
Anfeh	1
Ras Masqa	1
Bohsas	1
Dahr El Ein	2
Others	3

Akkar	Cases
Halba	1
El oyoun	2
El Borj	1
Hayssa	1
Masoudieh	1
Bebnin	4
Nahr El Bared	1
Berqayel	2
Jdeidet El Kaytaa	1
Rahbeh	1
Wady El jamous	1
Ein El Zeit	1
Dbabieh El Gharbieh	1
Shedra	1
Rayhanieh	2
Qobayat	1
Others	4

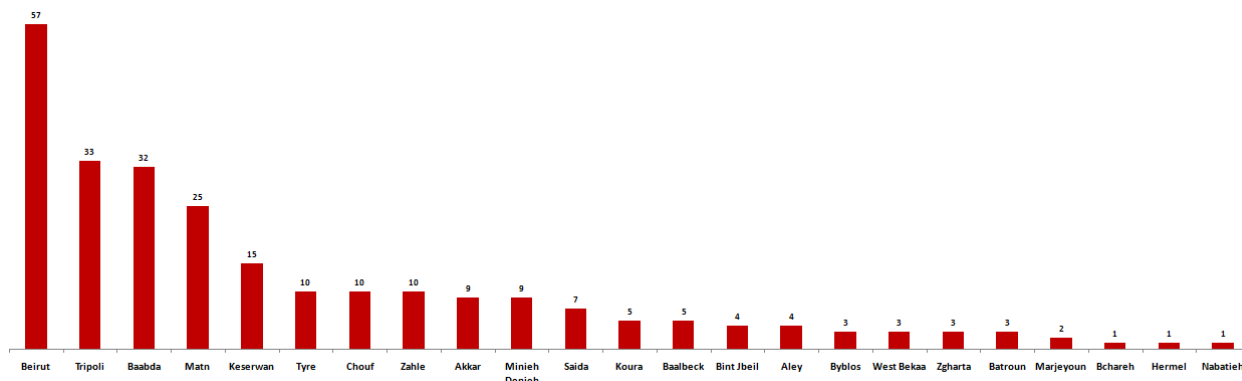
Cases per day



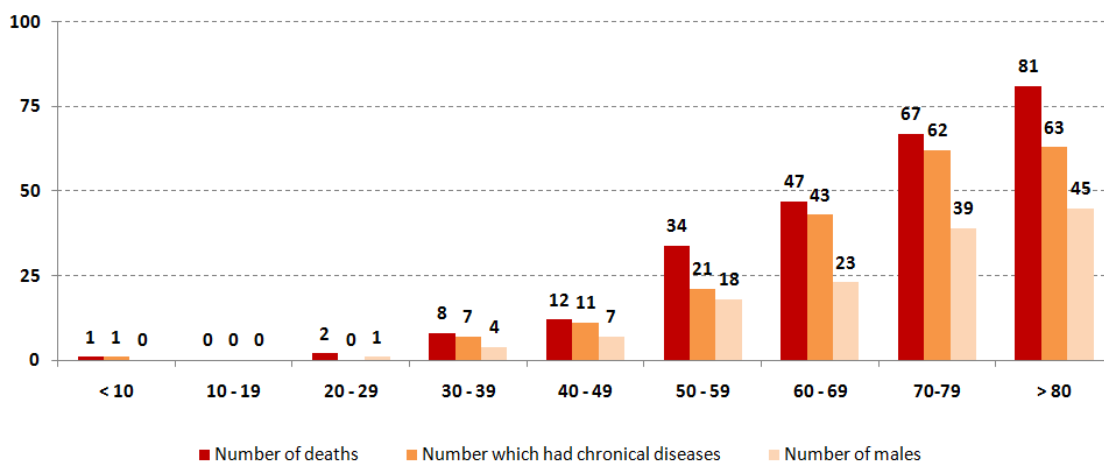
The percentage of positive cases out of the number of daily checks (2 September to 15 September 2020)



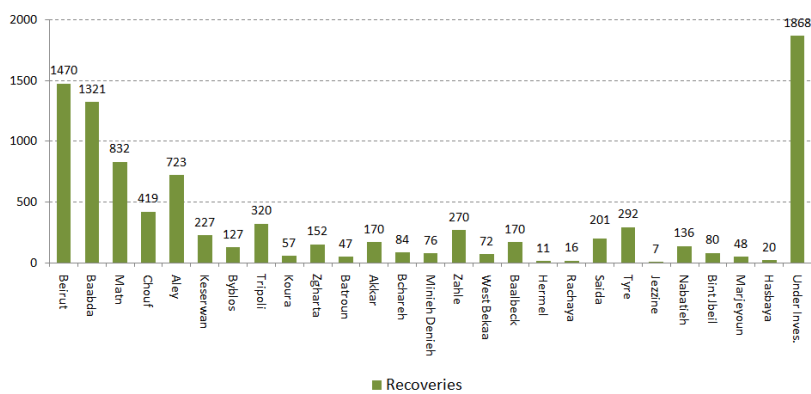
Distribution of deaths by Governorates



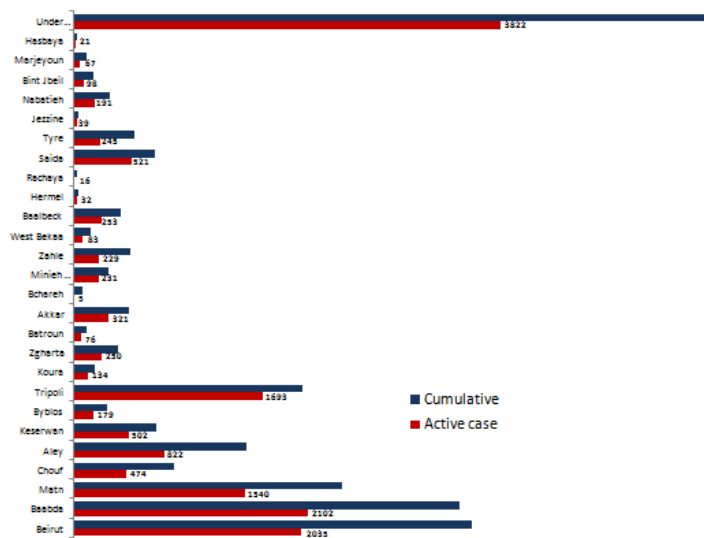
Distribution of deaths by Age



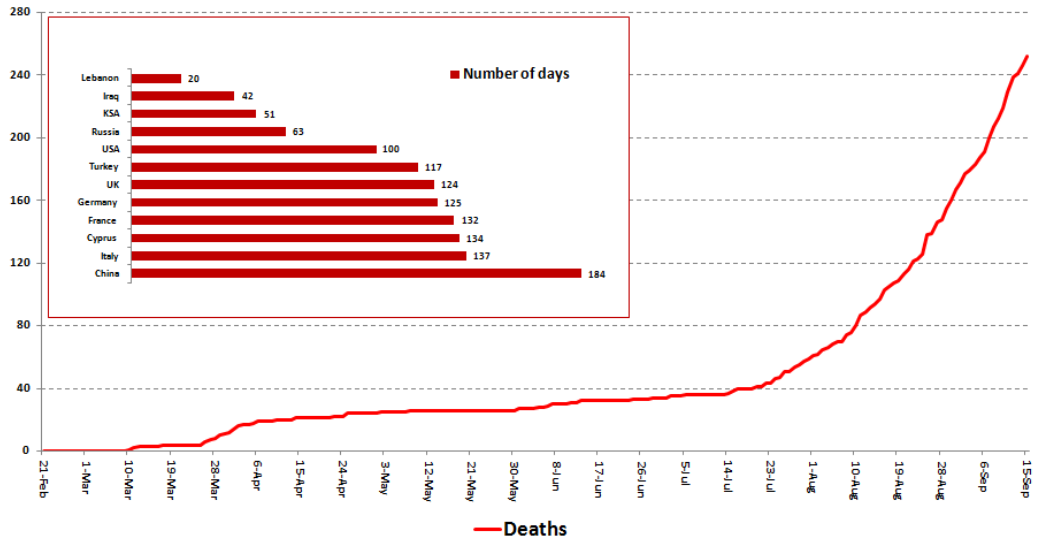
Distribution of Recoveries by Districts



Distribution of Active Cases by Districts



Comparison of the rate of doubling of the number of deaths in Lebanon with other countries (death doubling rate)

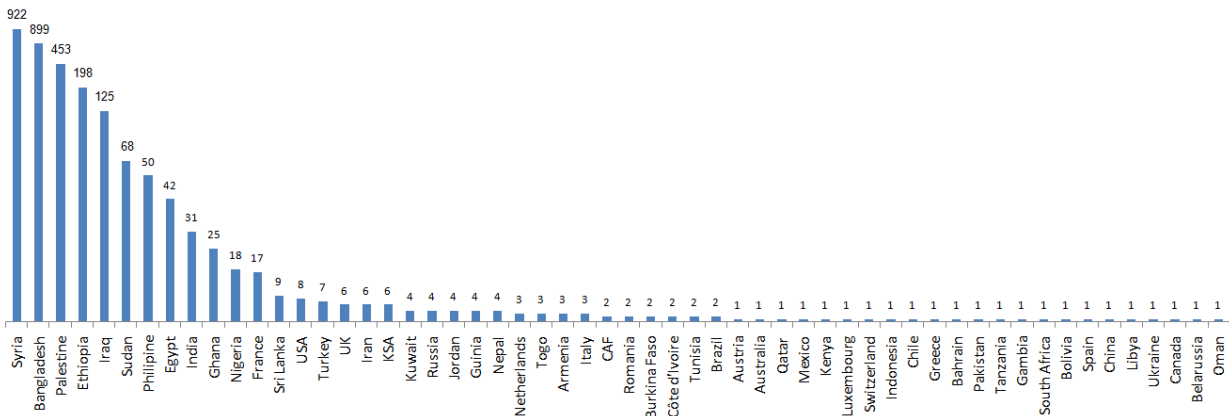


The distribution of the recorded deaths during the past 24 hours

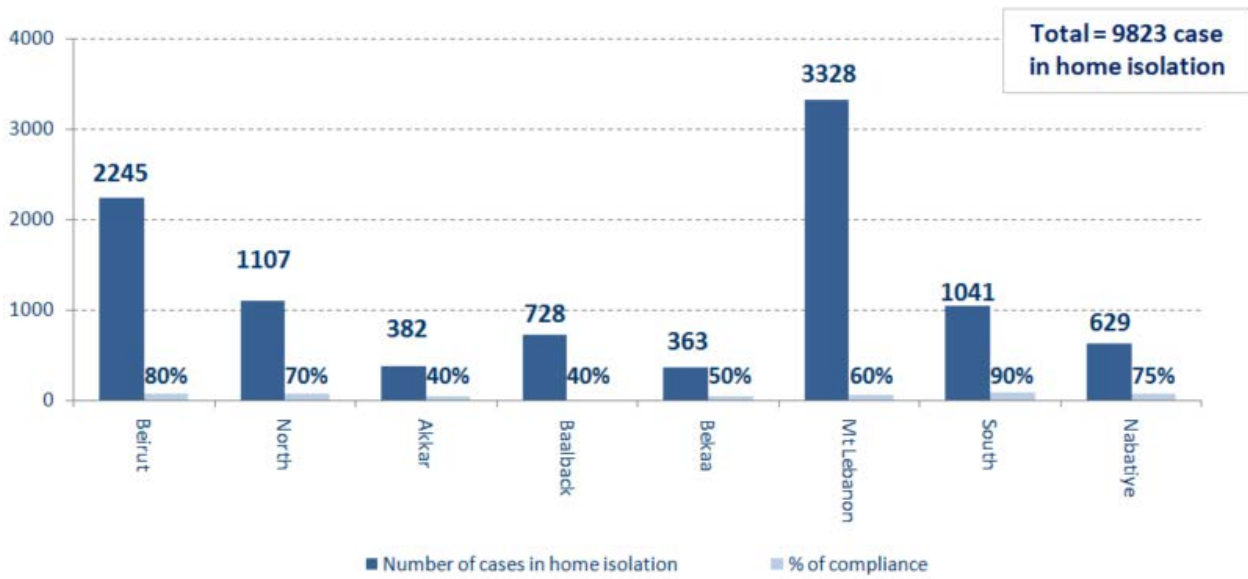
Hospital	Residence	Gender	Age	Chronic Disease
Tripoli Gov.	Minieh Denieh	Female	60	Yes
Tripoli Gov.	Minieh Denieh	Male	79	Yes
Tripoli Gov.	Minieh Denieh	Male	66	Yes
Haykal	Tripoli	Male	77	Yes
Haykal	Tripoli	Female	77	Yes
Harire Gov.	Maten	Male	86	Yes

Distribution of cases by nationality

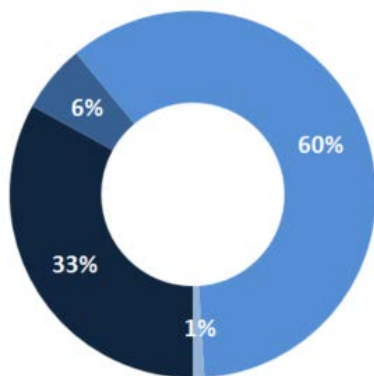
Lebanese : 22492 cases out of 25449 (88%)



Number of individuals in home isolation and percentage of commitment to isolation

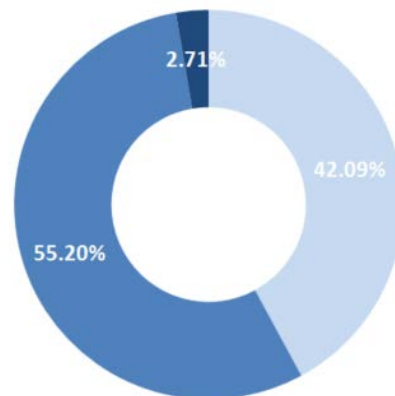


Exposure



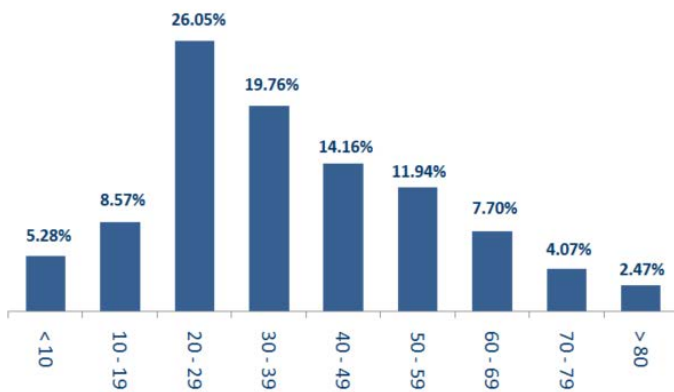
■ Contact with confirmed case ■ Travel related ■ Under investigation ■ Unidentified source

Status of Cases

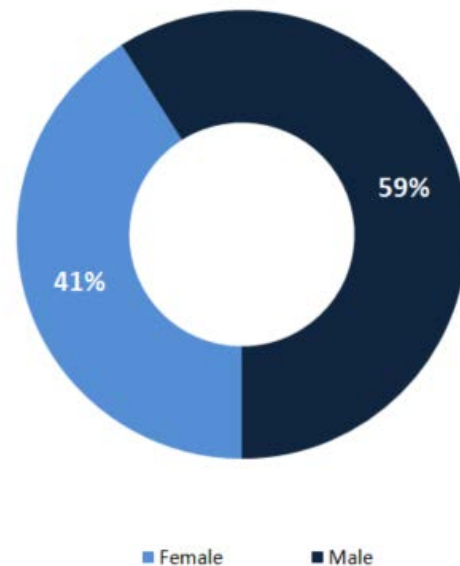


■ Asymptomatic ■ Mild/Moderate ■ Severe/Critical

Distribution by age

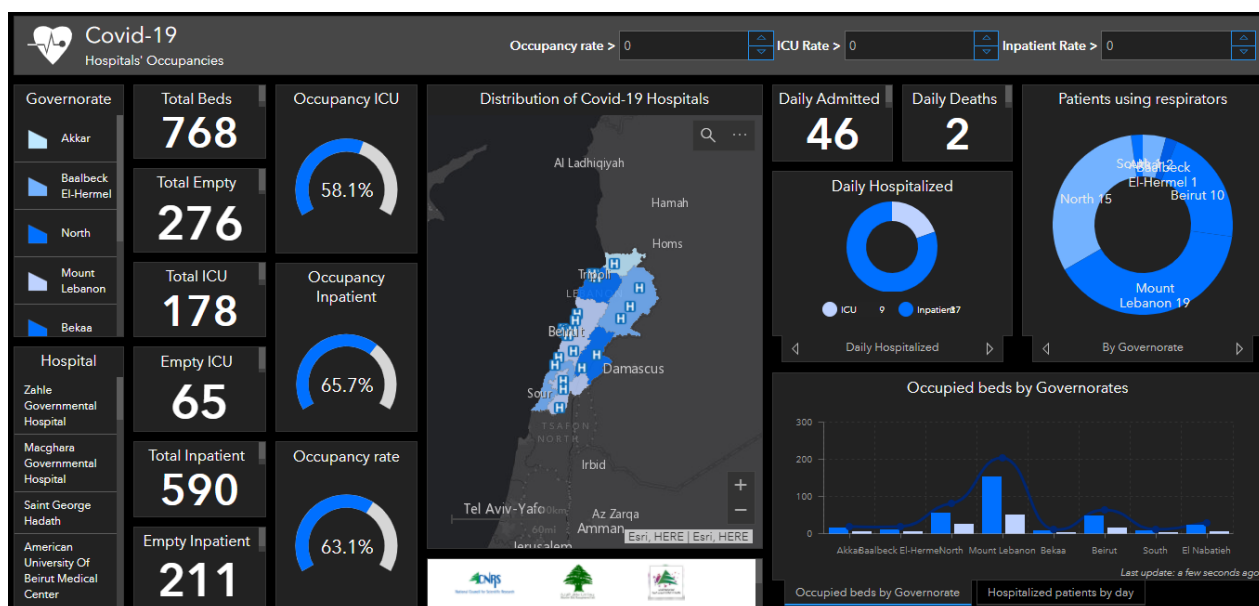


Distribution according to gender



■ Female ■ Male

The number of beds available for those infected with Coronavirus and the occupancy rate



For daily information on all the details of the bed distribution available for Covid-19 patients in the various governorates according to the hospitals

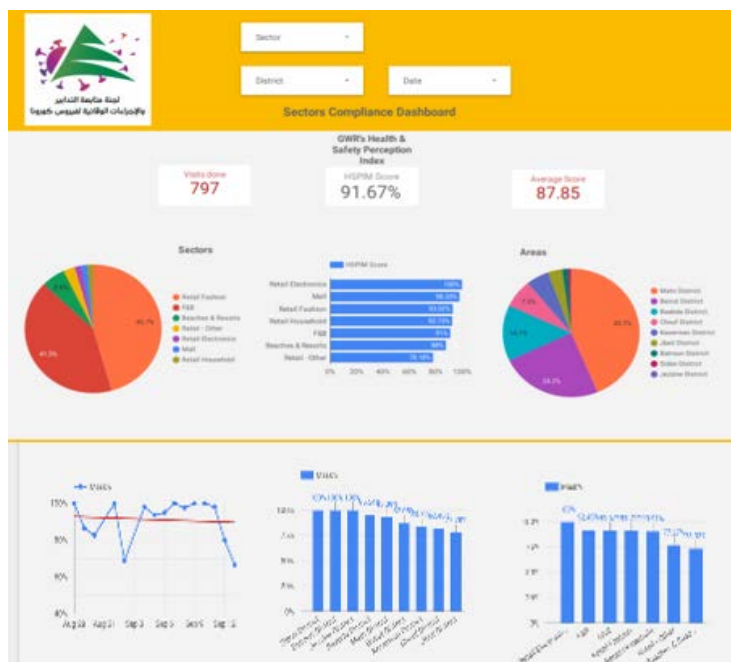
- Computer: <https://gisleb.cnrs.edu.lb/portal/apps/opsdashboard/index.html#/34b32db8030d4f229fc5db9ab686cca9>
- Mobile: <https://shorturl.at/cngJ2>

Online platform to track sector commitment in general mobilization procedures

Based on the recommendation issued by the National Committee for Follow-up of Preventive Measures and Measures to Confront the Coronavirus to open all sectors, provided that the general mobilization procedure (safe distance, muzzle, and hand sterilization) be applied, a special electronic platform was created that allows monitoring and measuring the percentage of commitment by various sectors on an ongoing basis.

The detailed results can be viewed directly at the following link:

<http://bit.ly/covidsectordata>



Decisions and actions taken – 15/09/2020

Ministry of Public Health

As part of the procedures related to all travelers coming to Lebanon, the Ministry of Public Health reminded the need to register on the ministry's COVID-19 MOPH PASS and verify the information is correct before sending it so that they can follow up on their health status via the following link: <https://arcg.is/0GaDnG>. And to view the measures and procedures required of returnees via the following link: <https://moph.gov.lb/ar/MoPHPASS>.

The Ministry of Public Health issued Circular No. 142 on 9/14/2020 to amend the procedures for arrivals to Lebanon.

The Ministry of Public Health issued Memorandum No. 141 of 9/14/2020 regarding the adoption of the Covid-19 Patient Management Protocol based on the recommendations and directions issued by the Lebanese Society for Infectious and Clinical Diseases, available on the website:

<https://moph.gov.lb/userfiles/files/news/LSIDCM.pdf>

The Ministry of Public Health issued the results of additional examinations for incoming trips to Lebanon on September 12, 2020, when two new positive cases were recorded and distributed over the following flights:

Arriving from	Company	Flight Number	Number of Positive Cases
11/09/2020			
Al Basra	Iraqi Airways	135	1
Irbeil	MEA	325	1
			2

Lebanese Red Cross

216,947 (2675 New)	Number of PCR tests transferred to laboratories	44,319 (52 New)	Number of additional ambulance centers ready to respond	48	ambulance centers	4,814 (48 New)	cases transferred to hospitals
166	Number of volunteers trained to transfer PCR tests	1,498	Number of trained paramedics	8,575 (28 New)	total number of respondents	75,236 (671 New)	number of those benefiting from awareness *sessions
967	The number of university volunteers trained to follow up on prevention measures in companies and institutions	217	Number of university volunteers trained to conduct awareness sessions	550	total LRC volunteers for covid19	8,409 (39 New)	number of trained managers for isolation centers
4,184 (35 New)	Number of beneficiaries from educational electronic platforms COVID-19	88,063 (304 New)	Number of distributed equipment	1,233,426	total distributed posters, brochures, and flyers on covid19 prevention	499 (11 New)	number of prisons that have been disinfected

General Directorate of State Security

- Investigating and following up on suspected and positive cases and cases in home quarantine for residents and expatriates.
- Sending warnings and closing a number of violating commercial stores in the various regions.

Beirut	South	North	Akkar	Beqaa	Nabateih	Baalbek Hermel	Mount Leb
50%	50%	60%	45%	55%	60%	20%	35%

General Directorate of Internal Security Forces

- Internal Security Forces circulated the preventive measures that must be followed when traveling by cars and using shared transportation and public cars.
- Writing arrest records against violators of the general closure decision

The number of seizure records during the past 24 hours					The total number of records that have been organized against violators of the general mobilization decisions since 03/08/2020		
Written records of violating institutions (absorptive capacity and preventive measures)					0		
Written records of persons violating the decision to wear a mask					0	Beirut	20,603
Written records of people violating the general mobilization decision (Aragil* and social distancing)					23	Mount Leb	18,767
Total					23	Beqaa	7,994
						North	6,776
Beirut	Mount Leb	Beqaa	North	South	South	6,724	
0	14	4	0	5	Total	60,864	

Ministry of Public Works and Transportation

Departing Flights		Arriving Flights	
Number of Flights	36	Number of Flights	33
Number of Departing Individuals	3,543	Number of Arrivals	2,343

Port	Entered			Left		
	Import	Direction	#	Export	Direction	#
Beirut	Metals	Alexandarun	1	Cars	Alexandaria	1
	Oil	Turkey	1	Containers	Russia	1
Tripoli	Wood	Romania	1			
Zahrani	Fuel Oil	Kuwait	1			
			4			2

General announcements

The implementation of the Ministry of Interior and Municipalities Decision No. 1056 of 9/8/2020 related to amending the opening and closing times of industrial and commercial establishments, as the timing of exit and entry into the streets was changed from the first hour after midnight until six in the morning, and the decision allowed bars and cabarets to open Nightclubs, electronic game stores, public parks, theaters, and cinemas, with strict enforcement of the preventive measures and measures adopted, provided that the swimming pools, indoor sports stadiums, amusement parks, and indoor spaces designated for children's games remain closed.

Note: The decisions can be found at www.drm.pcm.gov.lb

Examples of lack of adherence to safety measures

- Demand gatherings and demonstrations.
- Failure to comply with the preventive measures and procedures required in a number of stores and markets (putting on a muzzle or face mask, sterilizing hands, maintaining a safe distance).
- Non-compliance with the 50% occupancy rate in several restaurants and amusement game centers.
- Gatherings for social events.
- Failure of those in contact with confirmed cases to adhere to home isolation procedures until the results of the laboratory tests are issued.

If you feel any symptoms, call directly the hotline of the Ministry of Public Health: 1214 or 01/594459

A list of the laboratories accredited by the MoPH to conduct PCR tests

Public Hospitals			
Hospital Name	Location	Hospital Name	Location
Rafic Hariri University Hospital	Beirut	Bint Jbeil Governmental Hospital	Bint Jbeil
Tripoli Governmental Hospital	Tripoli	President Elias Hrawi Governmental Hospital	Zahle
Fattouh Keserwan Governmental Hospital	Kesrwen	Batroun Governmental Hospital	Batroun
Baalbek Governmental Hospital	Baalbek	Halba Governmental Hospital	Halba
Tibnin Governmental Hospital	Tibnine		
Private Hospitals			
Hospital/Lab Name	Location	Hospital/Lab Name	Location
AUBMC	Beirut	MLH	Baabda
Saint George Hospital	Beirut	Saint Georges Hospital	Baabda
Hôpital Notre Dame des Secours (CHU – NDS)	Jbeil	Ain w Zein Hospital	Chouf
HDF/Merieux/USJ	Beirut	Hamoud Hospital	Sidon
Makkassed General Hospitals	Beirut	Dar el Amal Hospital	Baalbek
LAUMC	Beirut	Sheikh Ragheb Harebb Hospital	Nabatieh
Wardieh Hospital	Beirut	Al Hadi Laboratory	Baabda
Al Mathlum Hospital	Tipoli	Akiki Laboratory	Byblos
Al Mounla Hospital	Tripoli	MDC	Tyr
Haykal Hospital	Koura	Jabal Amel Hospital	Tyr
Serhal Hospital	Metn	Doctor's Center	Beirut
HLG	Beirut	KML	Sidon
SDC	Nabteih	ADC*American Diagnostic Center	Beirut
INOIE Laboratory	Baabda	Khoury Hospital	Zahle
TRANSMEDICAL Laboratory	Metn	Sacre Coeur	Hazmieh
MCC	Zahle	BELLEVUE Hospital	Mansourieh
CHN	Zaghrta	LMSE	Tripoli
Clinigen Laboratory	Hazmieh	Al Rasoul Al Aazam Hospital	Beirut
Centre Medical Moderne	Ghbraye	Nabni Hospital	Tripoli
MDTC	Hamra		

Note: Some positive test results are sent from the highlighted laboratories to the Ministry of Public Health, that does not include a phone number to track cases, which contributes to the spread of the epidemic and unknown cases